

The Disaster Center is dedicated to the idea that disaster mitigation is cost effective and individuals pursuing their own interest are the greatest potential force for disaster reduction.

Please consider making a small donation to the Disaster Center



When disaster mitigation is cost effective, we are on the road to bringing disasters to an end.



FEMA

Daily Operations Briefing

Monday, November 14, 2016

8:30 a.m. EST

Significant Activity – Nov 13-14



Significant Events:

- M7.8 – New Zealand
- Wildfires North Carolina, South Carolina, Georgia & Tennessee

Tropical Activity:

- Atlantic – Tropical cyclone activity is not expected during the next 48 hours; Disturbance (5-Day outlook)
- Eastern Pacific – TS Tina
- Central Pacific – No tropical cyclones expected through Wednesday evening
- Western Pacific – No activity affecting U.S. territories

Significant Weather: None

Declaration Activity:

- FMAG approved for Pinnacle Mountain Fire, Pickens County, SC
- FMAG approved for Tatum Gulf Fire, Dade County, GA
- FMAG approved for Smith Mountain Complex Fire, Hamilton, Bledsoe, & Sequatchie counties, TN
- FMAG approved for Party Rock Fire, Rutherford & Buncombe counties, NC

Significant Earthquake – New Zealand



Situation

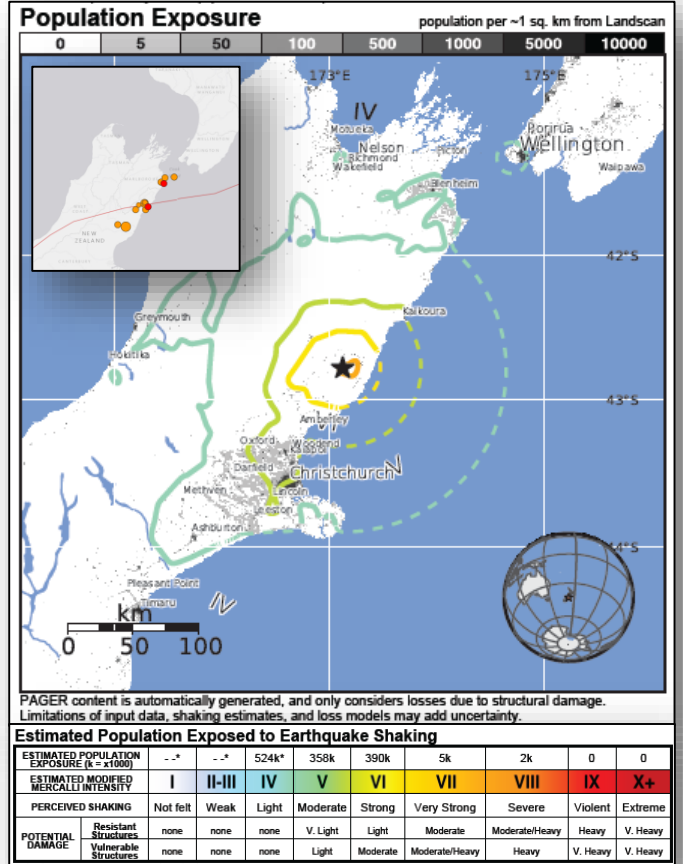
- M7.8; Modified Mercalli Intensity (MMI): VII - 6:02 a.m. EST, Nov 13 (1:02 a.m. NZST, Nov 14); approximately 58 miles North of Christchurch
- Multiple aftershocks occurred
- Population of approximately 390,000 were exposed to strong shaking; 5,000 to very strong shaking
- Orange PAGER for economic losses, significant damage likely
- Green PAGER for shaking related fatalities; low likelihood of casualties
- LOCAL Tsunami threat issued for east coast of NZ; Tsunami wave struck Kaikoura with wave heights of 5-8ft
- No tsunami threat for U.S. Territories

Impacts

- Evacuated residents near coast allowed to return to their homes
- Two fatalities/multiple injuries reported by media
- Damaged buildings & structures reported from Christchurch to Kaikoura
- Widespread power outages reported

Response

- NZ Civil Defense Authority continues to issue updates and warnings
- Local States of Emergency issued
- FEMA Region IX remains at Normal Operations; RWC continues to monitor
- Government of New Zealand has not requested International Assistance; no US Disaster Declaration expected (USAID)

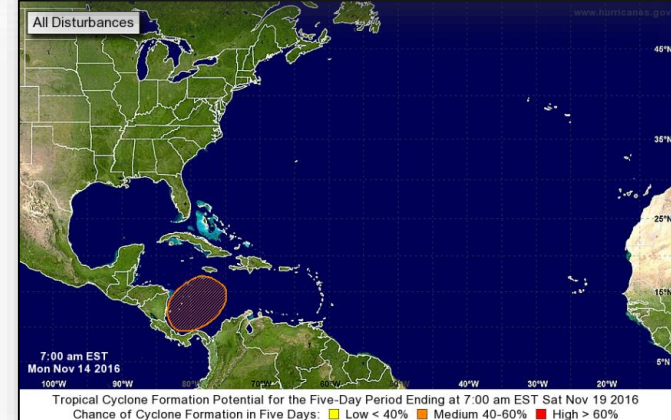
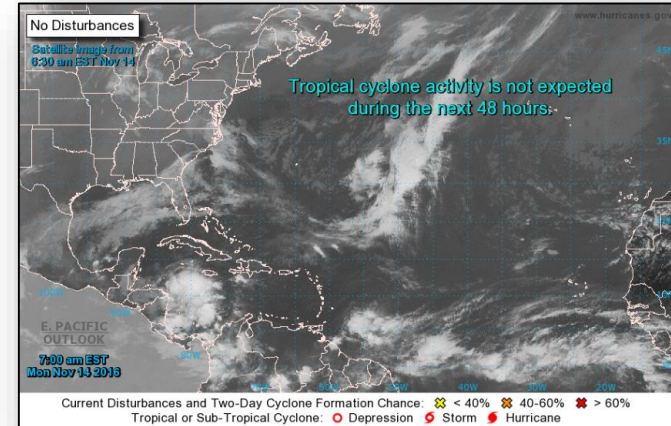


Tropical Outlook – Atlantic



Disturbance 1 (as of 7:00 a.m. EST)

- Broad area of low pressure expected to form over the SW Caribbean Sea during the next couple of days; drifting N-NW
- Environmental conditions conducive for slow development
- Tropical depression could form by late week
- Formation chance through 48 hours: Low (near 0%)
- Formation chance through 5 days: Medium (60%)

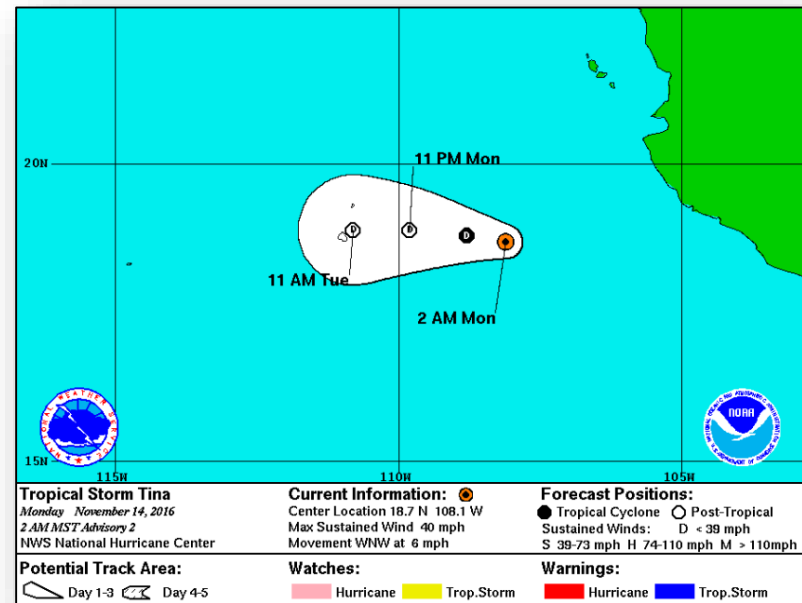


Tropical Outlook – Eastern Pacific

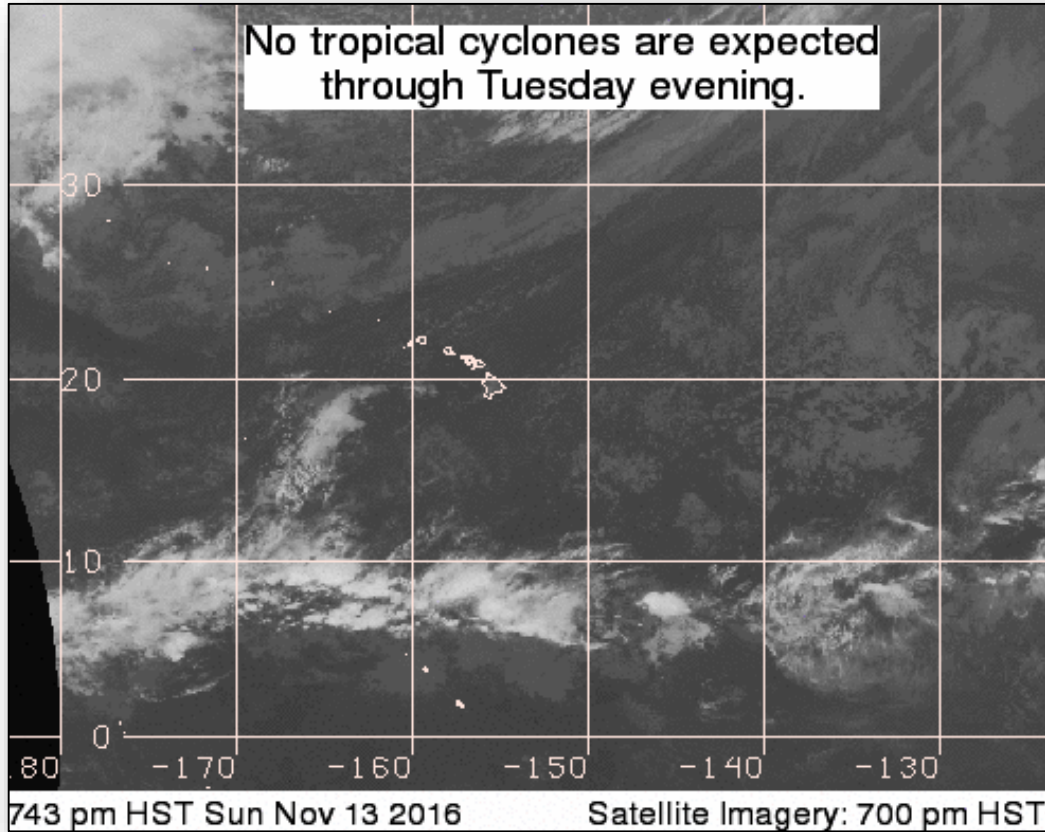


Tropical Storm Tina (Advisory #2 as of 7:00 a.m. EST)

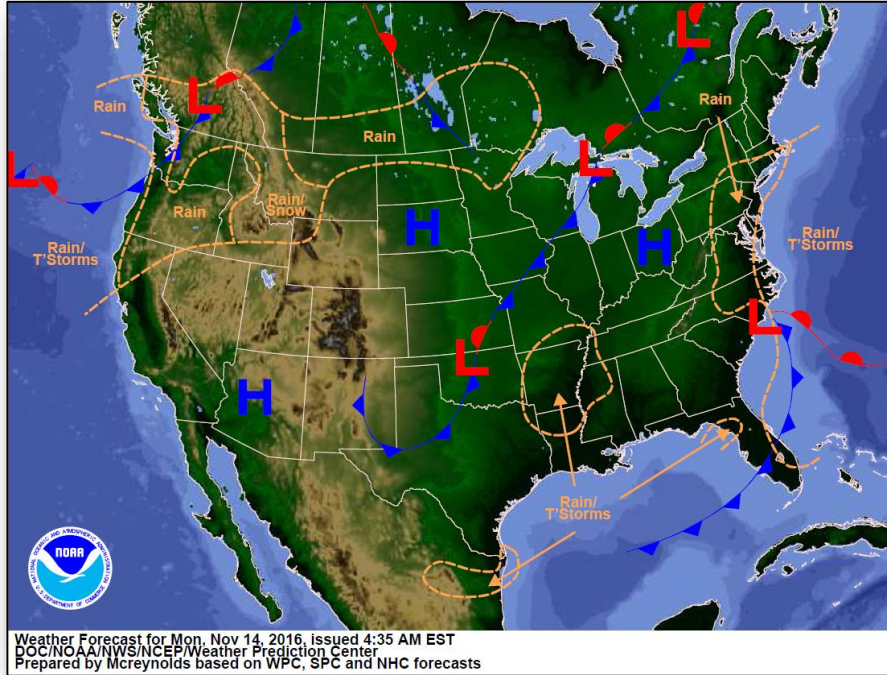
- Located 250 miles W of Manzanillo, Mexico
- Moving WNW at 6 mph; maximum sustained winds 40 mph
- Expected to become a remnant low tonight or Tuesday
- Tropical storm-force winds extend outward up to 105 miles
- No coastal watches or warnings in effect



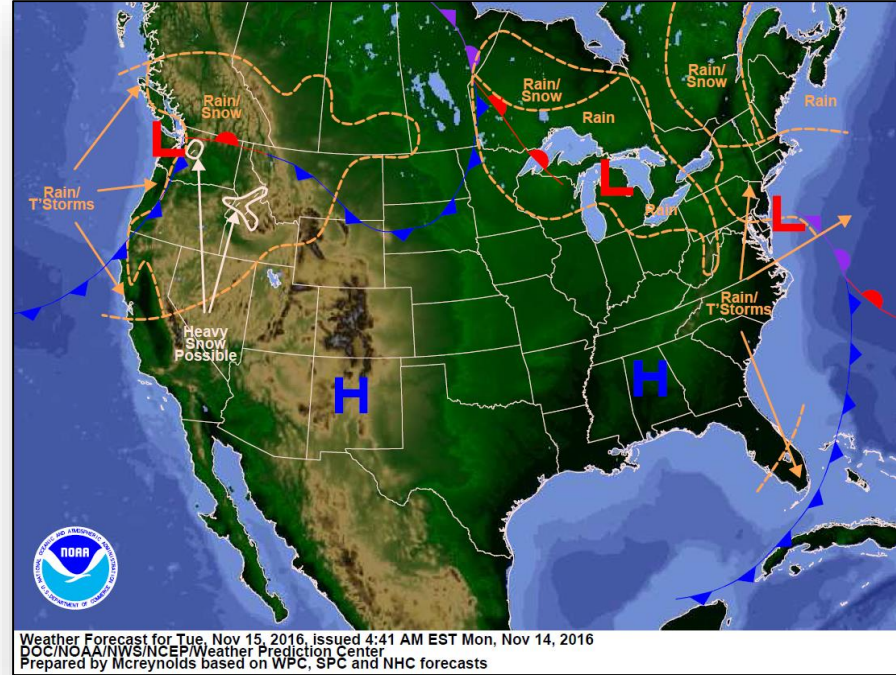
Tropical Outlook – Central Pacific



National Weather Forecast



Today

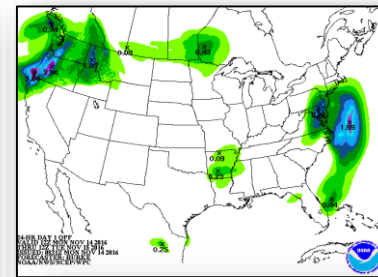
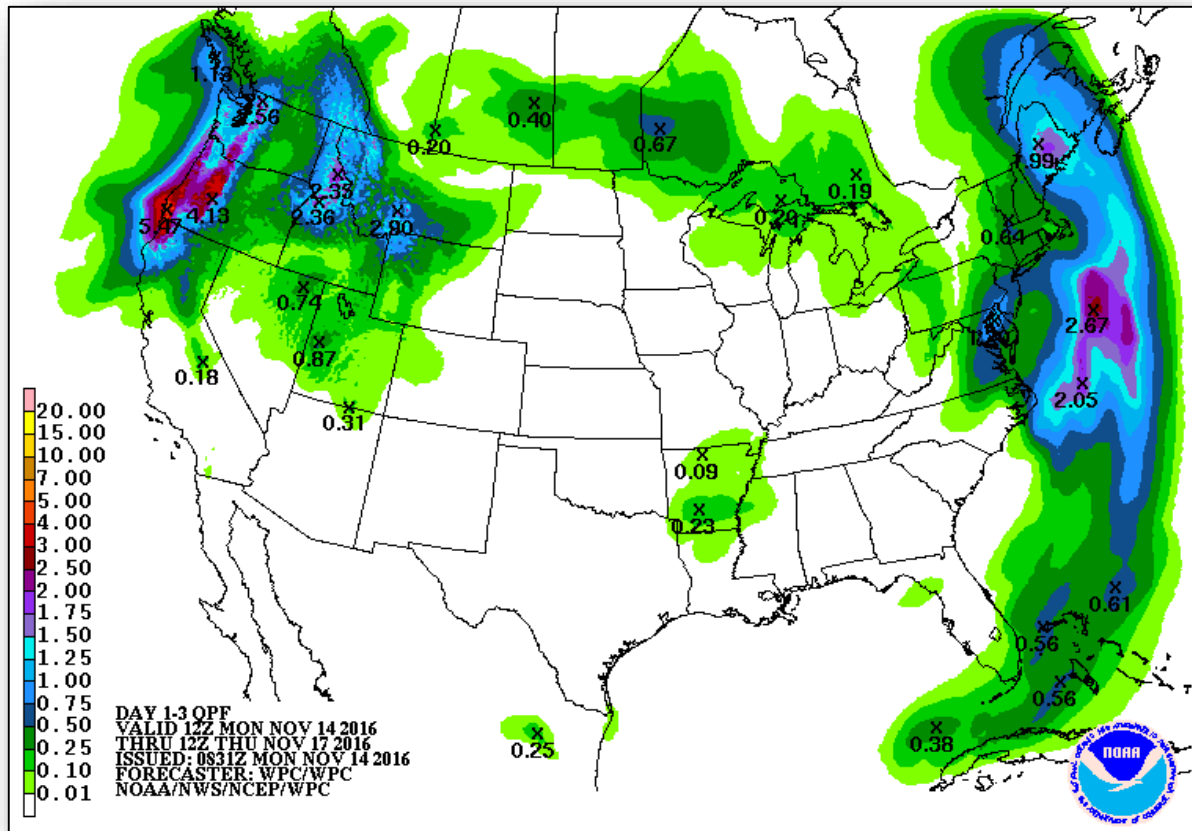


Tomorrow

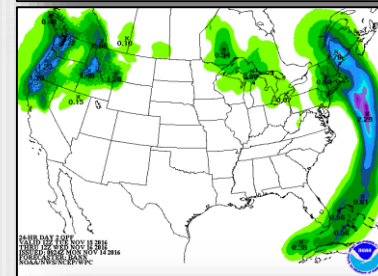
Precipitation Forecast – Days 1-3



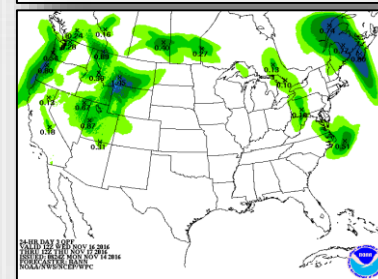
FEMA



Day 1

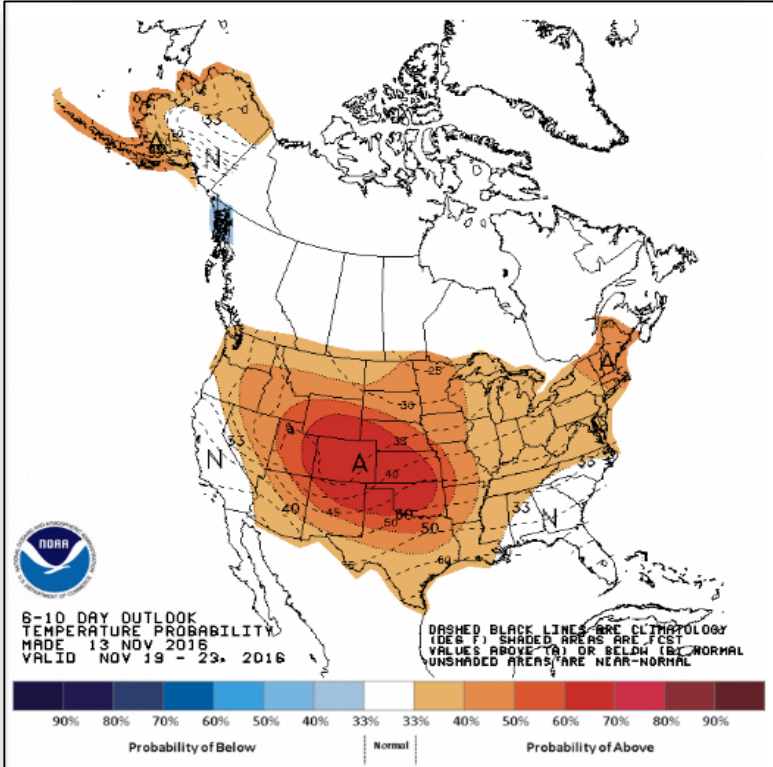


Day 2

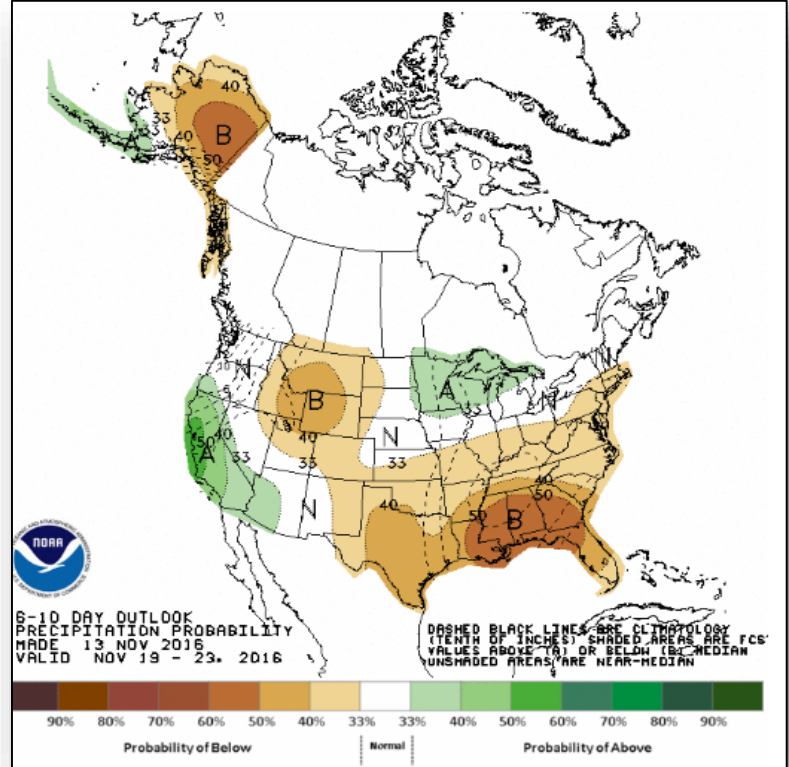


Day 3

6-10 Day Outlooks



6 - 10 Day Temperature Probability



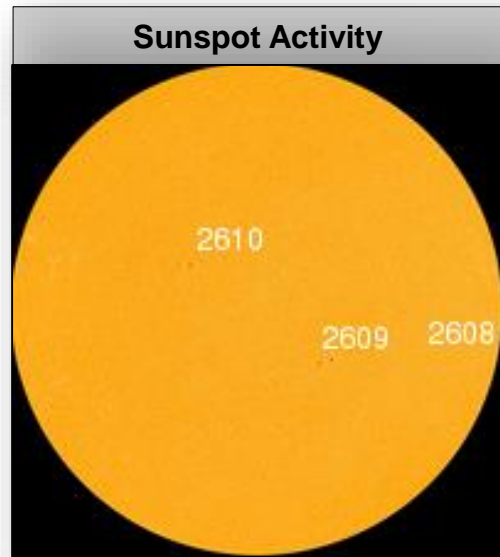
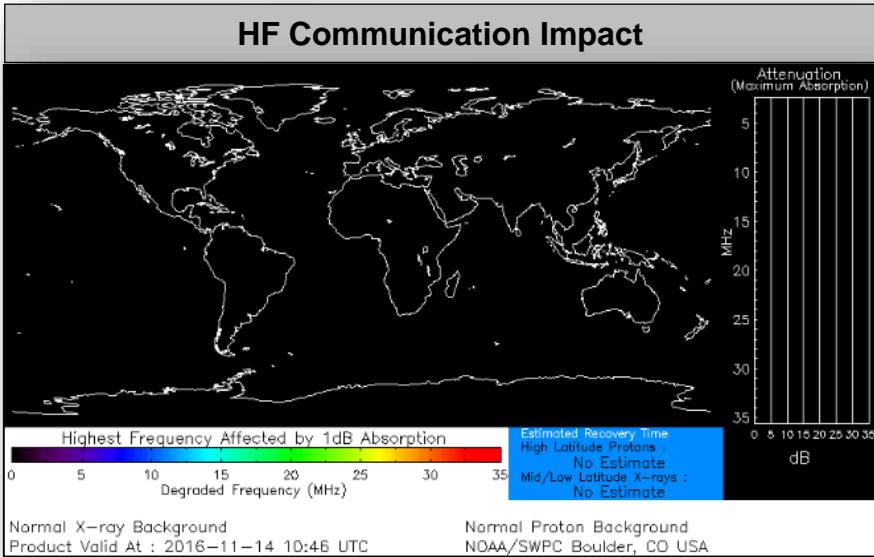
6 - 10 Day Precipitation Probability

Space Weather



	Space Weather Activity	Geomagnetic Storms	Solar Radiation	Radio Blackouts
Past 24 Hours	None	None	None	None
Next 24 Hours	None	None	None	None

For further information on NOAA Space Weather Scales refer to <http://www.swpc.noaa.gov/noaa-scales-explanation>



Party Rock Fire – North Carolina



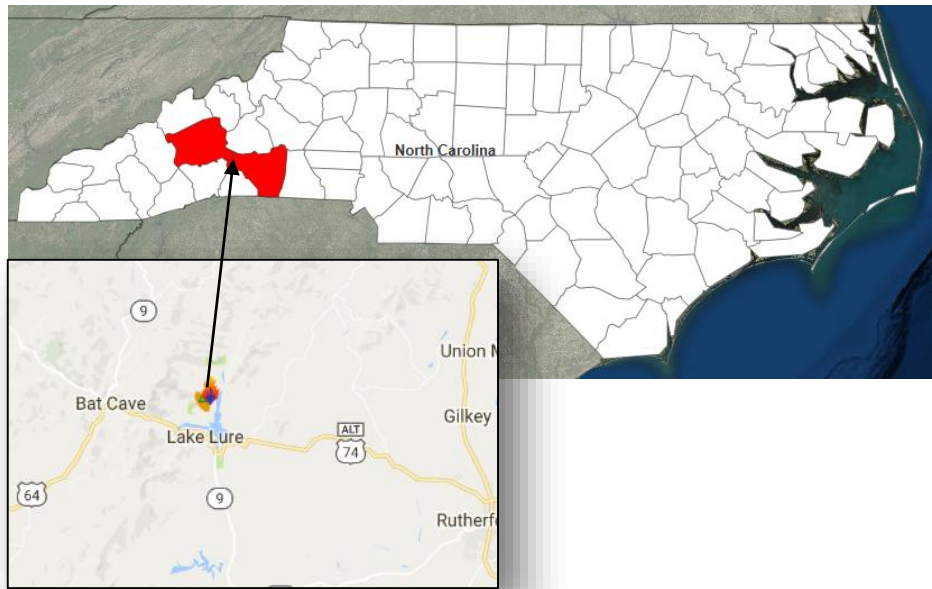
Fire Name (County)	FMAG # / Approved	Acres burned	% Contained	Evacuations (Residents)	Structures			Fatalities / Injuries
					Threatened	Damaged	Destroyed	
Party Rock (Rutherford & Buncombe)	XXXX-FM-NC	1,914	13%	Mandatory	950 (900 homes)	0	0	0 / 0

Current Situation

- Fire started November 5, 2016 burning in the communities of Lake Lure, Chimney Rock, & Shumont (pop 3,210)
- Mandatory evacuations for 780 residents
- One shelter open statewide with 3 occupants (ARC Midnight Shelter Count as of 4:54 am EST, November 14)

Response

- FMAG approved November 11, 2016
- NC EOC at Full Activation (Hurricane Matthew)
- FEMA Region IV RWC remains at Watch/Steady State



Pinnacle Mountain Fire – South Carolina



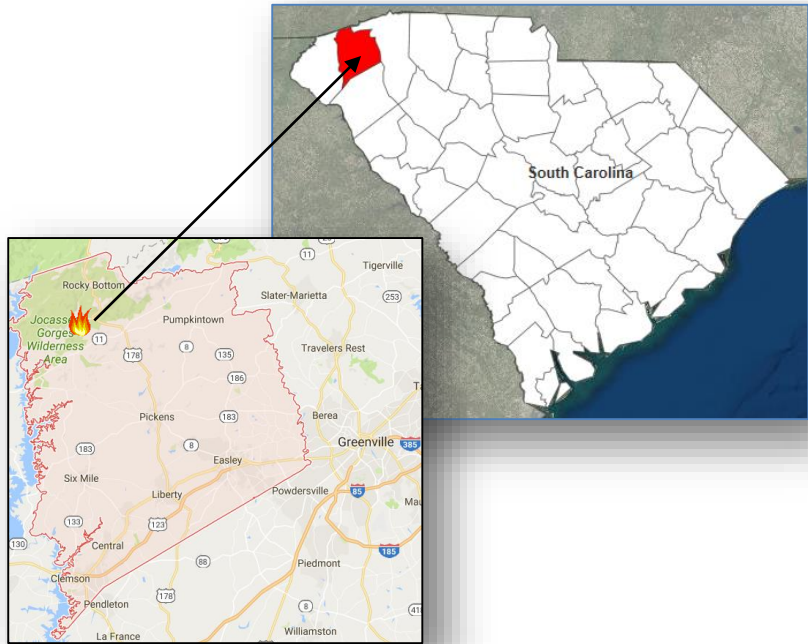
Fire Name (County)	FMAG # / Approved	Acres burned	% Contained	Evacuations (Residents)	Structures			Fatalities / Injuries
					Threatened	Damaged	Destroyed	
Pinnacle Mountain (Pickens)	XXXX-FM-SC November 12, 2016	2,100	15%	Mandatory	180 homes	0	0	0 / 0

Current Situation

- Fire started November 8, 2016 burning on state & private land
- Mandatory evacuations in effect for 130 residents
- One shelter open with four occupants
- NOAA forecasting 50% chance of precipitation today

Response

- FMAG approved November 12, 2016
- SC EOC remains at Watch/Steady State
- FEMA Region IV RWC remains at Watch/Steady State



Tatum Gulf Fire – Georgia



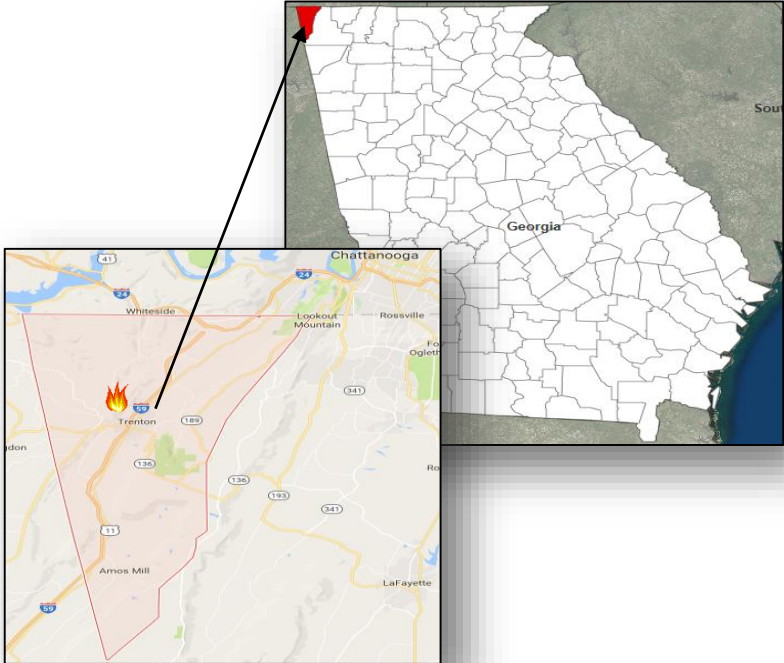
Fire Name (County)	FMAG # / Approved	Acres burned	% Contained	Evacuations (Residents)	Structures			Fatalities / Injuries
					Threatened	Damaged	Destroyed	
Tatum Gulf (Dade)	XXXX-FM-GA November 13, 2016	1,325	10%	Mandatory (200)	272 (160 homes)	0	0	0 / 0

Current Situation

- Fire started on November 11, 2016, 15 miles SW of Trenton, GA (pop, 2,300)
- 1,325 acres of state & private land burned, 10% contained
- Mandatory evacuations for 200 residents (60 homes)
- One shelter open, unknown occupants
- No fatalities/injuries

Response

- FMAG approved November 13, 2016
- GA EOC remains at Watch/Steady State
- FEMA Region IV RWC remains at Watch/Steady State



Wildfire Summary



FEMA

Fire Name (Counties)	FMAG # (Approved Date)	Acres burned	% Contained	Evacuations (Residents)	Structures			Fatalities / Injuries
					Threatened	Damaged	Destroyed	
Tennessee (1)								
Smith Mountain Complex (Hamilton, Bledsoe & Sequatchie)	5160-FM-TN November 11, 2016	2,480	0%	Mandatory	400 homes	0	0	0 / 0
North Carolina (1)								
Party Rock (Rutherford & Buncombe)	5161-FM-NC November 11, 2016	3,457	15%	Mandatory	1,050 (1,000 homes)	0	0	0 / 0
South Carolina (1)								
Pinnacle Mountain (Pickens)	5162-FM-SC November 12, 2016	2,180	20%	Lifted	205 (180 homes)	0	0	0 / 0
Georgia (1)								
Tatum Gulf (Dade)	5163-FM-GA November 13, 2016	1,325	10%	Mandatory	272 (160 homes)	0	0	0 / 0

Joint Preliminary Damage Assessments



FEMA

Region	State / Location	Event	IA/PA	Number of Counties		Start – End
				Requested	Completed	
III	PA	Severe Storms and Flooding October 20, 2016	PA	4	0	11/9 – TBD
VI	OK	Earthquake November 6, 2016	IA	1	0	11/10 – TBD
VII	KS	Severe Weather & Flooding October 6-8, 2016	PA	6	0	11/14 – TBD

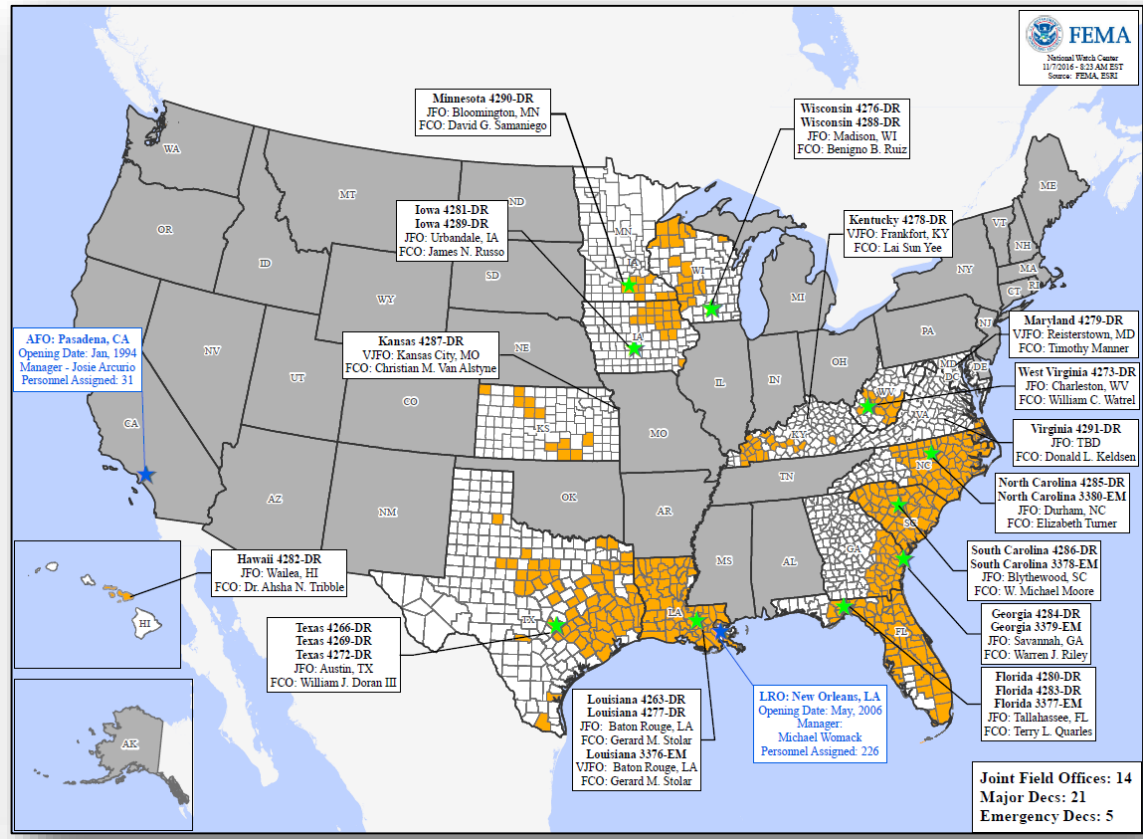
Disaster Requests & Declarations



FEMA

Declaration Requests in Process		Requests APPROVED (since last report)	Requests DENIED (since last report)
1	Date Requested	0	0
DE – DR Severe Storms and Flooding	October 27, 2016		

Open Field Offices



Readiness – Deployable Teams and Assets



FEMA

Resource	Status	Total	FMC Available		Partially Available	Not Available	Detailed, Deployed, Activated	Comments	Rating Criteria
FCO		35	4	11%	0	2	29		OFDC Readiness: FCO Green Yellow Red Type 1 3+ 2 1 Type 2 4+ 3 2 Type 3 4+ 3 2 FDRC 3 2 1 • Green = Available / FMC • Yellow = Available / PMC • Red = Out-of-Service • Blue = Assigned / Deployed
FDRC		10	3	30%	0	1	6		
US&R		28	28	100%	0	0	0		
National IMAT		3	2	66%	0	0	1	<u>Deployed:</u> East 2 to LA (DR-4277)	• Green: 3 available • Yellow: 1-2 available • Red: 0 avail (<i>Individual N-IMAT red if 50% of Section Chiefs and / or Team Leader is unavailable for deployment.</i>)
Regional IMAT		13	5	31%	2	0	6	Region VI-2 Returned FMC today Region VIII (Reconstituting through Nov 28) Region IX-2 (Reconstituting through Nov 18) <u>Deployed:</u> Region I to NC (DR-4285) Region III to VA (DR-4291) Region IV-1 to NC (DR-4285) Region IV-2 to FL (DR-4280/4283) Region V to MN (DR-4290) Region VII to IA (DR-4281)	• Green: >6 teams available • Yellow: 4 - 6 teams available • Red: < 4 teams available <i>R-IMAT also red if TL Ops / Log Chief is unavailable & has no qualified replacement</i>
MERS		18	13	72%	0	0	5	<u>Assets are supporting:</u> FL (DR-4283), GA (DR-4284), NC (DR-4285), MN (DR-4290), VA (DR-4291)	• Green = >66% available • Yellow = 33% to 66% available • Red = <33% available

Readiness – National and Regional Teams



FEMA

Resource	Status	Total	FMC Available		Partially Available	Not Available	Status	Comments	Rating Criteria
NWC	Green	5	5	100%	0	0	Watch/ Steady State		<ul style="list-style-type: none"> • Green = FMC • Yellow = PMC • Red = NMC
NRCC	Green	2	2	100%	0	0	Not Activated		
HLT	Green	1	1	100%	0	0	Activated		
RRCCs	Green	10	10	100%	0	0	Not Activated		
RWCs/MOCs	Green	10	10	100%	0	0	Watch/ Steady State		



FEMA

FEMA's mission is to support our citizens and first responders to ensure that as a nation we work together to build, sustain, and improve our capability to prepare for, protect against, respond to, recover from, and mitigate all hazards.