

The Disaster Center is dedicated to the idea that disaster mitigation is cost effective and individuals pursuing their own interest are the greatest potential force for disaster reduction.

Please consider making a small donation to the Disaster Center



When disaster mitigation is cost effective, we are on the road to bringing disasters to an end.



FEMA

Daily Operations Briefing

Friday, October 7, 2016

8:30 a.m. EDT

Significant Activity – Oct 6 - 7



Significant Events: Hurricane Matthew

Tropical Activity:

- Atlantic – Hurricane Matthew (Category 3); Hurricane Nicole (Category 2)
- Eastern Pacific – Tropical cyclone activity not expected next 48 hours
- Central Pacific – Disturbance 1 – Low (20%)
- Western Pacific – No tropical cyclone activity affecting U.S. interests

Significant Weather:

- Flash flooding possible – Southeast to Mid-Atlantic and Central Appalachians
- Severe thunderstorms possible – coastal South Carolina
- Rain and thunderstorms – Southwest to Southern Plains and Middle Mississippi Valley; Southeast to Mid-Atlantic and Appalachians; Middle Mississippi Valley to Great Lakes
- Rain and snow – Northern Intermountain to Northern Plains
- Rain – Great Lakes Mid-Atlantic
- Critical/Elevated Fire Weather – southern CA
- Red Flag Warnings – southern CA
- Space weather – Past 24 hours – none observed; next 24 hours – none predicted

Earthquake Activity: No significant activity

Declaration Activity:

- Emergency Declaration Approved – FL, GA and SC (Hurricane Matthew)
- Emergency Declaration Request – NC (Hurricane Matthew)

Hurricane Matthew

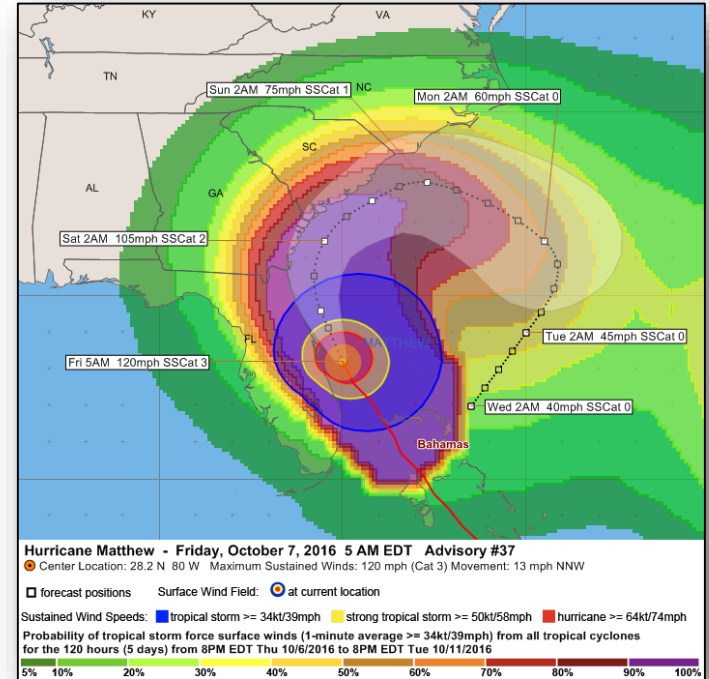


Hurricane Matthew (Category 3) (Advisory #37 UPDATED STATEMENT as of 7:00 a.m. EDT)

- Located 35 miles ENE of Cape Canaveral, FL
- Moving NNW at 14 mph
- Maximum sustained winds 120 mph
- Hurricane force Winds extend 60 miles
- Tropical storm force winds extend 185 miles
- Hurricane Warnings from Jupiter Inlet, FL to South Santee River, SC
- Tropical Storm Warnings for much of southern tip of FL

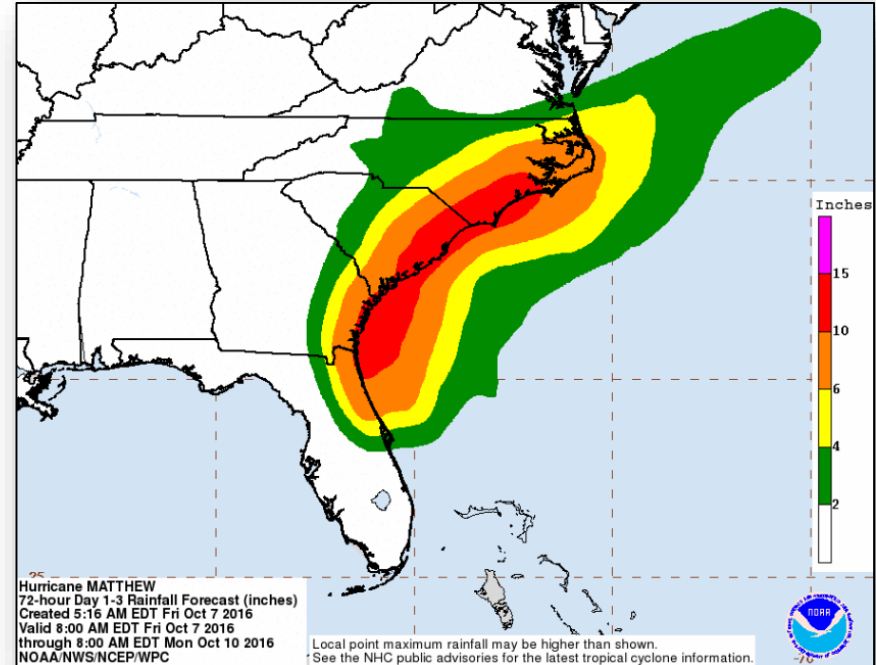
Storm Surge Forecast - heights above ground.

- Sebastian Inlet, FL to Edisto Beach, SC - 7 to 11 feet
- Edisto Beach to South Santee River, SC - 4 to 6 feet
- Jupiter Inlet to Sebastian Inlet, FL - 4 to 6 feet
- South Santee River, SC, to Cape Fear, NC - 2 to 4 feet



Rainfall Forecast – Day 1-3

- Matthew is expected to produce total rain accumulations of 8 to 12 inches over the Atlantic coast of the U.S. from central Florida to eastern North Carolina, with possible isolated maximum amounts of 15 inches
- Several smaller creeks and coastal rivers will experience moderate to major flooding



Hurricane Matthew - State/Region IV Response



FEMA

Florida:

- EOC: Full Activation / State of Emergency declared
- [Emergency Declaration FEMA-3277-EM-FL approved](#)
- Evacuations: Mandatory for [10 Counties](#)
- [Shelters: 133 open with 22,359 occupants; 42 special needs shelters with 155 occupants*](#)
- [3,500 National Guard personnel activated](#)
- [US&R FL-TF1 and FL-TF2 deployed as state resources](#)

Georgia:

- EOC: Full Activation / State of Emergency declared
- [Emergency Declaration FEMA-3379-EM-GA approved](#)
- Evacuations: Mandatory – [6 counties](#) & city of Tybee Island (pop. 3,082); Voluntary – west of I-95
- Curfews in place for numerous counties
- [Shelters: 18 open with 2,164 occupants*](#)

South Carolina:

- EOC: Full Activation / State of Emergency declared / [Emergency Declaration FEMA-3378-EM-SC approved](#)
- Evacuations: Mandatory for coastal communities ([over 175,000 evacuated](#)); [Shelters: 47 open with 2,587 occupants*](#)

North Carolina:

- EOC: Partial Activation / State of Emergency declared / Emergency Declaration requested
- Urban Search and Rescue (US&R)/Swift Water Rescue Teams activated and pre-deployed; 247 National Guard activated
- Coordination for EMS Ambulance Strike teams and EMS medical EVAC buses started
- Evacuations: Mandatory for Cape Lookout; [voluntary for Pender County. State medical support shelter open in Goldsboro](#)

FEMA Region IV:

- RRCC: Level I Full Activation/ RWC: Watch/Steady State
- IMAT-1 deployed to NC EOC
- IMAT-2 deployed to FL EOC
- LNOs deployed to FL, NC, SC & GA EOC's
- Hurricane Liaisons deployed to National Hurricane Center
- Region IV DCE deployed to FL; [Region VIII DCE deployed to SC](#)

*ARC Midnight Shelter Count as of 6:00 am EDT

Hurricane Matthew - FEMA HQs Response



FEMA HQ:

- NRCC: Level I Full Activation/ NWC: Watch/Steady State
- National IMAT-West deployed to FL EOC
- National IMAT-East 1 deployed to Atlanta, GA
- [Region V IMAT deployed to SC EOC](#)
- Region IX IMAT-2 deployed to SC EOC
- Staging areas: Albany, GA; Fort Bragg, NC; Fort A.P. Hill, VA
- MERS personnel and MCOVs supporting deployed teams, FSA, and ISB locations
- [US&R deploying to preliminary staging areas:](#)
 - [Blue IST to Atlanta, GA](#)
 - [NY-TF1 \(Type 3\) – for potential use in GA or SC](#)
 - [MO-TF1 \(Type 3\) for potential use in GA](#)
 - [MD-TF1 \(Type 3 w/HEPP-1 Cache\) to Ft. Bragg, NC](#)
 - [TN-TF1 \(Type 1\) for use in SC \(going to Ft. Bragg\)](#)
 - [VA-TF1 \(Type 1\), and VA-TF2 \(Type 1\) deploying to stage at Lake City Airport, Lake City, FL](#)
 - [OH-TF1 \(Type 1\), PA-TF1 \(Type 1\), NJ-TF1 \(Type 1\), and IN-TF1 \(Type 1 w/HEPP-3 Cache\) deploying to stage at to Lakeland, FL](#)

State	Deployed	Deployed Pending Check-In	Positions Left to Fill on Standard Open Requests
FL	217	29	33
GA	307	270	200
NC	94	30	20
SC	29	25	14
VA	36	16	3
Grand Total	683	370	270

FEMA Recovery:

- IRS Agreement activated to provide up to 1,200 agents online by October 8

FEMA Field Operations:

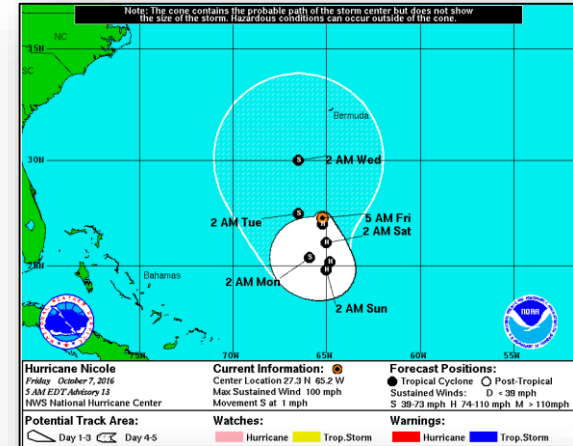
- [7 FEMA Corps teams supporting response efforts at Distribution Centers \(DCs\) and mobilization sites](#)
- [45 FEMA Corps teams trained in Disaster Survivor Assistance \(DSA\) deploying to stage in Vicksburg, MS, Baltimore, MD, and Atlanta, GA](#)
- 4 additional teams to receive Just in Time Training in DSA; anticipated arrival in field is October 16
- Incident Workforce Deployments:

Tropical Outlook – Atlantic

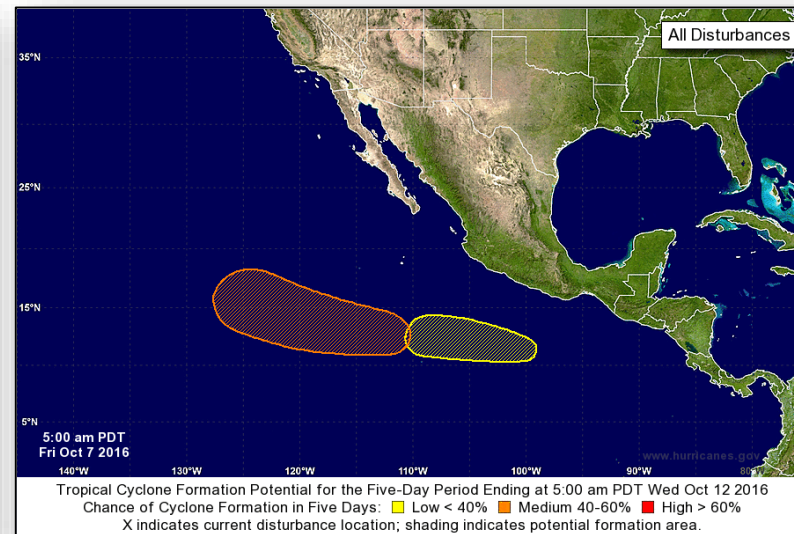
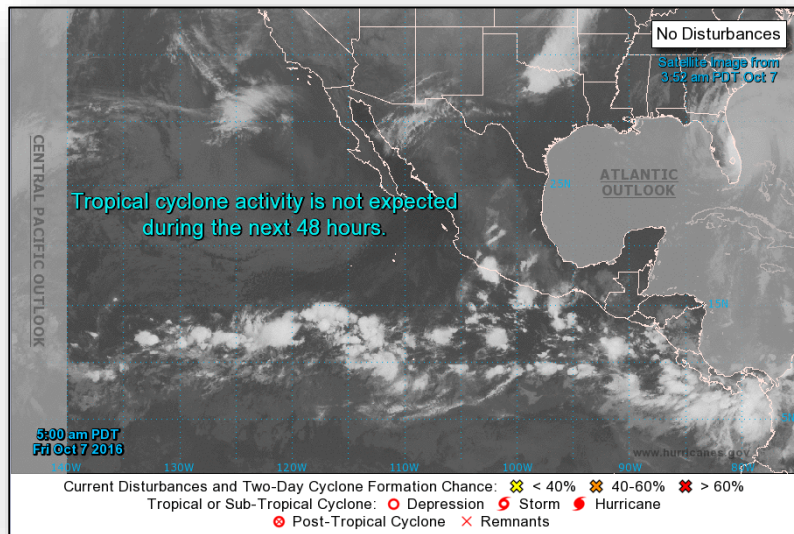


Hurricane Nicole: (Advisory 13, as of 5:00 a.m. EDT)

- Located 345 miles S of Bermuda
- Drifting S at 1 mph
- Slightly faster southward motion expected tonight and on Saturday
- Maximum sustained winds 100 mph (Category 2)
- Additional weakening is forecast next 48 hours
- Hurricane force winds extend 15 miles
- Tropical storm force winds extend 90 miles
- No threat to US territories



Tropical Outlook – Eastern Pacific

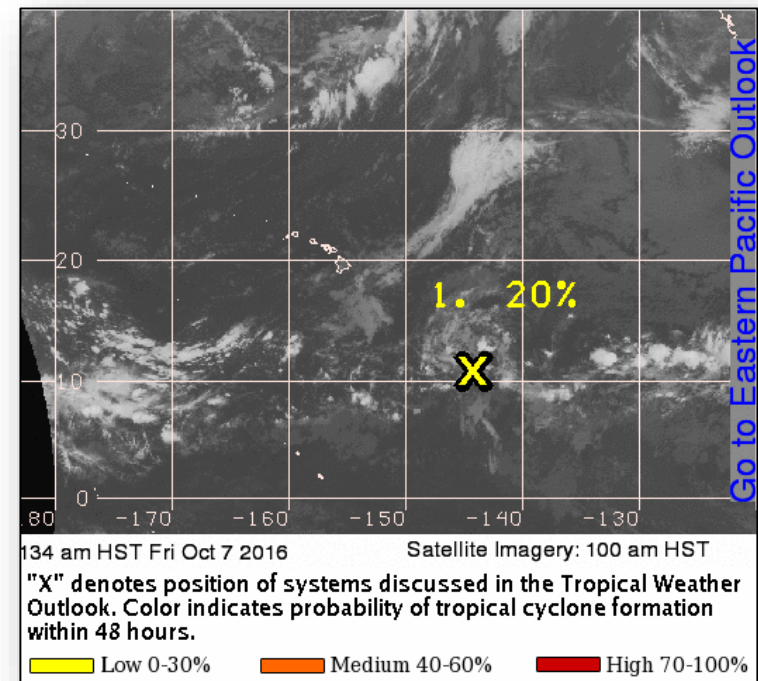


Tropical Outlook – Central Pacific

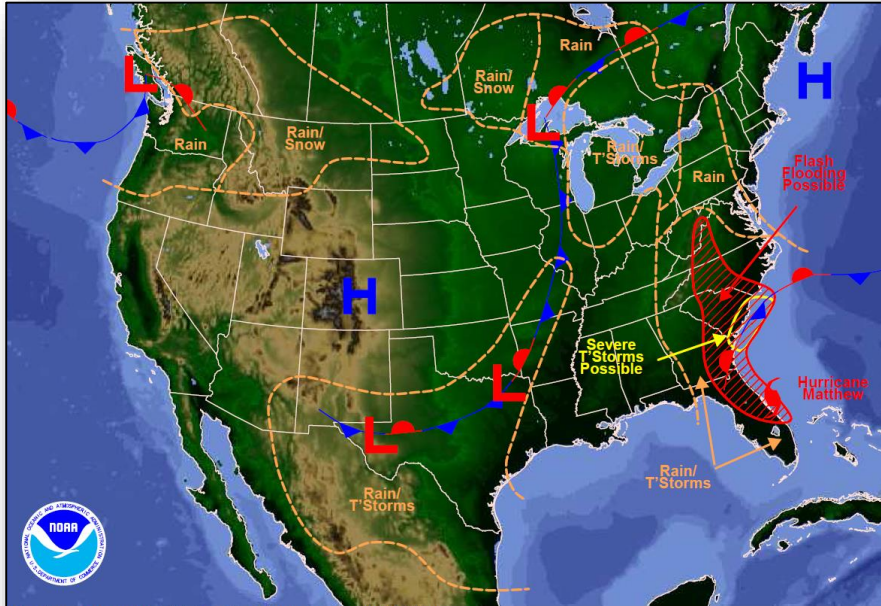


Disturbance 1: (as of 8:00 a.m. EDT)

- Located 940 miles SE of Big Island of Hawaii
- Moving W at 10 mph
- Development, if any, will be slow to occur next several days
- Formation chance through 48 hours: Low (20%)

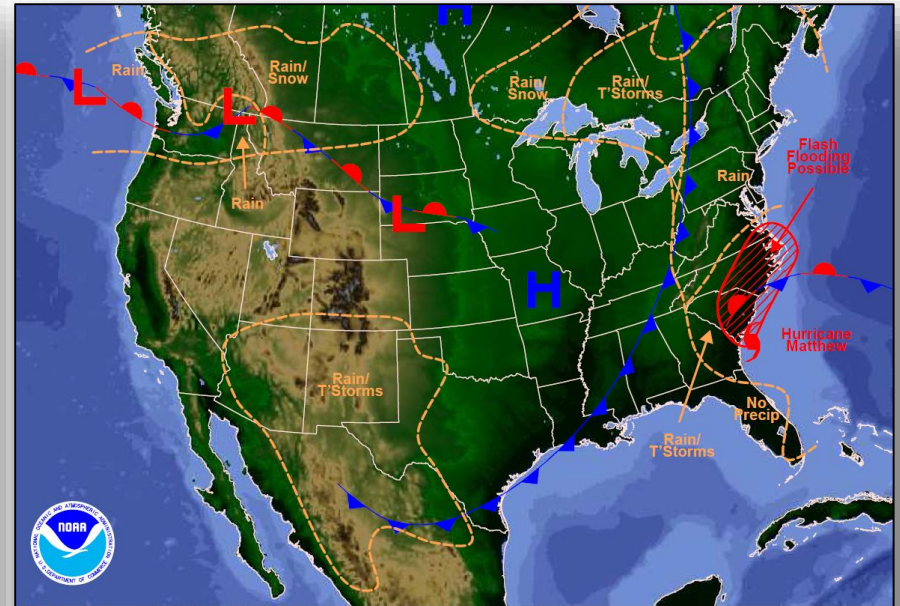


National Weather Forecast



Weather Forecast for Fri, Oct 07, 2016, issued 4:40 AM EDT
DOC/NOAA/NWS/NCEP/Weather Prediction Center
Prepared by McReynolds based on WPC, SPC and NHC forecasts

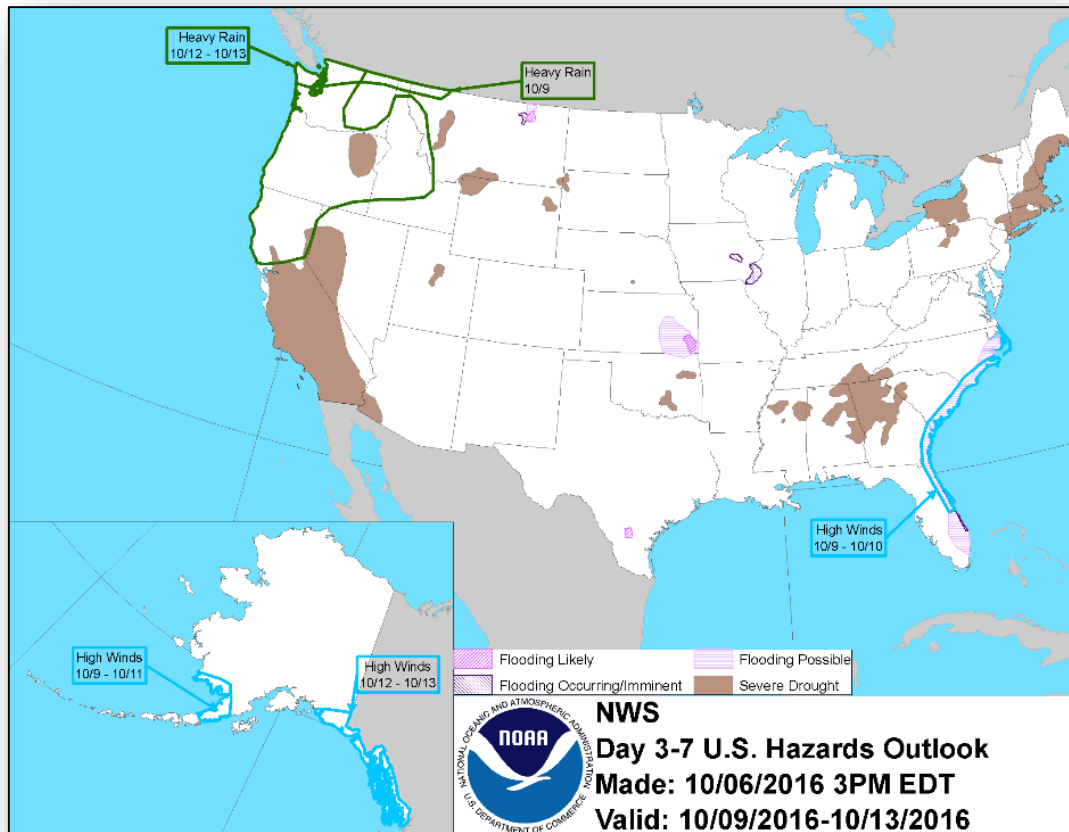
Today



Weather Forecast for Sat, Oct 08, 2016, issued 4:51 AM EDT Fri, Oct 07, 2016
DOC/NOAA/NWS/NCEP/Weather Prediction Center
Prepared by McReynolds based on WPC, SPC and NHC forecasts

Tomorrow

Hazards Outlook – Oct 9-13



Wildfire Summary



Fire Name (County)	FMAG # (Approved Date)	Acres burned	% Contained	Evacuations (Residents)	Structures			Fatalities / Injuries
					Threatened	Damaged	Destroyed	
Colorado (1)								
Beulah Hill Fire (FINAL) (Pueblo County)	5155-FM-CO (October 4, 2016)	5,232	75% (+25)	Mandatory (repopulation in progress)	740 (730 homes)	0	14 (8 homes)	0 / 0

Joint Preliminary Damage Assessments



Region	State / Location	Event	IA/PA	Number of Counties		Start – End
				Requested	Complete	
V	Wisconsin	Severe Storms and Flooding September 21 – 22, 2016	PA	12	0	10/4 – TBD
	Minnesota	Severe Storms and Flooding September 21 – continuing, 2016	PA	9	0	10/10 – TBD
			IA	4	0	10/10 – TBD
VII	Kansas	Severe Storms and Flooding September 2 – 12, 2016	PA	11	11	9/28 – 10/6

Disaster Requests & Declarations



Declaration Requests in Process		Requests APPROVED (since last report)	Requests DENIED (since last report)
2	Date Requested	4	0
Navajo Nation – DR Severe Storms and Flooding	September 21, 2016		
HI – DR Severe Storms and Flooding	September 27, 2016	Declared October 6, 2016	
NC – EM Hurricane Matthew	October 4, 2016		
SC – EM Hurricane Matthew	October 4, 2016	Declared October 6, 2016	
FL – EM Hurricane Matthew	October 5, 2016	Declared October 6, 2016	
GA – EM Hurricane Matthew	October 6, 2016	Declared October 6, 2016	

Declarations Approved



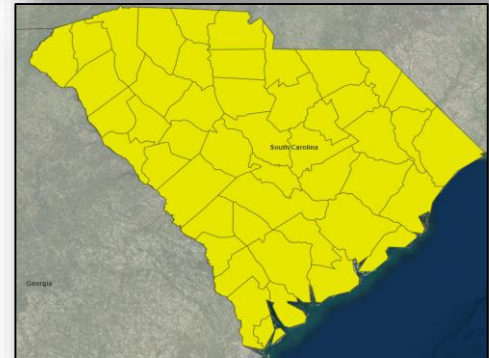
FEMA-3377-EM-FL


- Emergency Declaration approved on October 6, 2016 for State of Florida
- For Hurricane Matthew beginning October 3, 2016, and continuing
- Provides:
 - Emergency Protective Measures (Category B), limited direct federal assistance under the Public Assistance program at 75% federal funding, for 28 counties
- FCO is Terry L. Quarles



FEMA-3378-EM-SC

- Emergency Declaration approved on October 6, 2016 for State of South Carolina
- For Hurricane Matthew beginning October 4, 2016, and continuing
- Provides:
 - Emergency Protective Measures (Category B), limited to direct federal assistance under the Public Assistance program at 75% federal funding, for all 46 counties and the Catawba Indian Nation
- FCO is W. Michael Moore



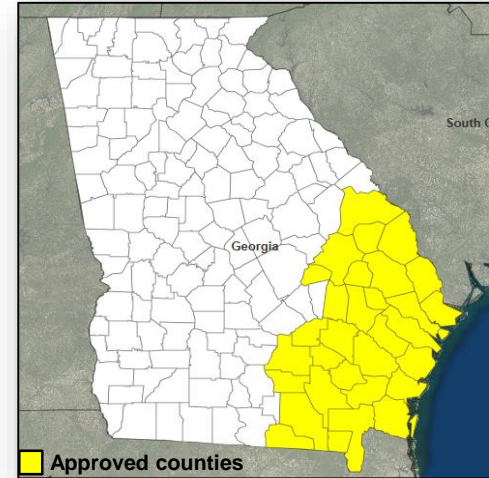
 Approved counties

Declarations Approved



FEMA-3379-EM-GA

- Emergency Declaration approved on October 6, 2016 for State of Georgia
- For Hurricane Matthew beginning October 4, 2016, and continuing
- Provides:
 - Emergency Protective Measures (Category B) limited to direct federal assistance under the Public Assistance program at 75% federal funding, for 30 counties
- FCO is Warren J. Riley

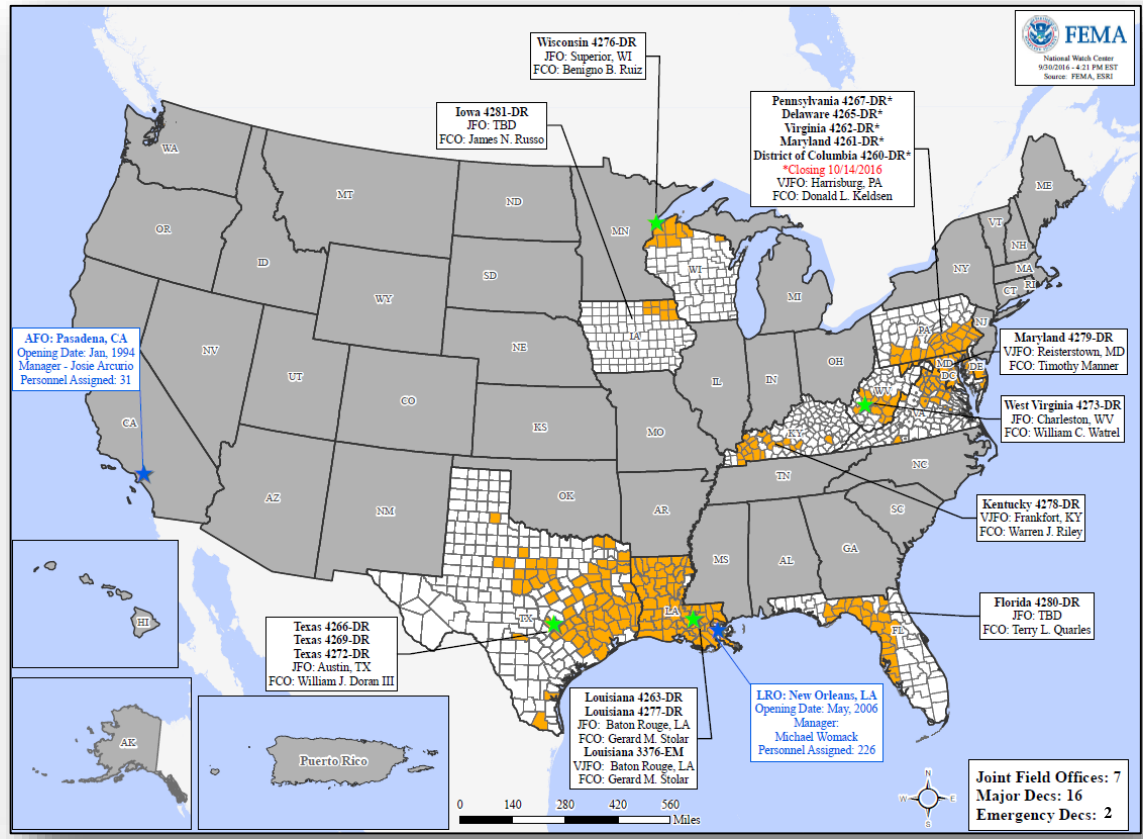


FEMA-4282-DR-HI

- Major Disaster Declaration approved on October 6, 2016 for State of Hawaii
- For severe storms, flooding, landslides, and mudslides from September 11-14, 2016
- Provides:
 - Public Assistance for Maui County
 - Hazard Mitigation statewide
- FCO is Dr. Ahsha N. Tribble



Open Field Offices



Readiness – Deployable Teams and Assets



Resource	Status	Total	FMC Available		Partially Available	Not Available	Detailed, Deployed, Activated	Comments	Rating Criterion
FCO	Yellow	35	6	17%	0	0	29		OFDC Readiness: FCO Green Yellow Red Type 1 3+ 2 1 Type 2 4+ 3 2 Type 3 4+ 3 2
FDRC	Red	10	1	10%	0	3	6		FDRC 3 2 1
US&R	Green	28	16	57%	0	0	12	Blue IST to GA NY-TF1 to GA or SC MO-TF1 to GA MD-TF1 to Ft. Bragg, NC TN-TF1 to SC VA-TF1 and VA-TF2 to Lake City, FL OH-TF1, PA-TF1, IN-TF1, NJ-TF1 to Lakeland, FL (FL-TF1 & FL-TF2 Utilized as state assets)	<ul style="list-style-type: none"> Green = Available / FMC Yellow = Available / PMC Red = Out-of-Service Blue = Assigned / Deployed
National IMAT	Red	3	0	0%	0	0	3	East 2 to LA (DR-4277) East 1 & West to GA (Hurricane Matthew)	<ul style="list-style-type: none"> Green: 3 available Yellow: 1-2 available Red: 0 avail (<i>Individual N-IMAT red if 50% of Section Chiefs and / or Team Leader is unavailable for deployment.</i>)
Regional IMAT	Yellow	13	4	31%	0	0	9	Deployed: Region III to VA (Hurricane Matthew) Region IV-1 to NC (Hurricane Matthew) Region IV-2 to FL (Hurricane Matthew) Region V & Region IX-2 to SC (Hurricane Matthew) Region VI-2, Region VIII & Region X to LA (DR-4277) Region VII to IA (DR-4281)	<ul style="list-style-type: none"> Green: >6 teams available Yellow: 4 - 6 teams available Red: < 4 teams available <i>R-IMAT also red if TL Ops / Log Chief is unavailable & has no qualified replacement</i>
MERS	Green	18	14	78%	0	0	4	Deployed: Tallahassee and Ocala, FL Washington, DC Thomasville, GA Raleigh and Fort Bragg, NC Columbia and West Columbia, SC Richmond and AP Hill, VA Chicago, IL (Chicago Marathon)	<ul style="list-style-type: none"> Green = >66% available Yellow = 33% to 66% available Red = <33% available

Readiness – National and Regional Teams



Resource	Status	Total	FMC Available		Partially Available	Not Available	Status	Comments	Rating Criteria
NWC	Green	5	5	100%	0	0	Not Activated		<ul style="list-style-type: none"> • Green = FMC • Yellow = PMC • Red = NMC
NRCC	Green	2	2	100%	0	0	Activated	Level I, 24/7 (Hurricane Matthew)	
HLT	Green	1	1	100%	0	0	Activated		
RRCCs	Green	10	10	100%	0	0	Activated	Region IV at Level I, 24/7 (Hurricane Matthew)	
RWCs/MOCs	Green	10	10	100%	0	0	Activated	Region I at Enhanced Watch, day shift only (Hurricane Matthew) Region III returned to Watch/Steady State	



FEMA

FEMA's mission is to support our citizens and first responders to ensure that as a nation we work together to build, sustain, and improve our capability to prepare for, protect against, respond to, recover from, and mitigate all hazards.