

The Disaster Center is dedicated to the idea that disaster mitigation is cost effective and individuals pursuing their own interest are the greatest potential force for disaster reduction.

Please consider making a small donation to the Disaster Center



When disaster mitigation is cost effective, we are on the road to bringing disasters to an end.



# **FEMA**

## **Daily Operations Briefing**

**Monday, September 26, 2016**

**8:30 a.m. EDT**

# Significant Activity - Sept 23 - 26



**Significant Events:** Iowa Flooding

## **Tropical Activity:**

- Atlantic – Disturbance 1 – Medium (60%); Disturbance 2 – Low (near 0%)
- Eastern Pacific – Tropical Storm Roslyn; Disturbance 1 – High (70%)
- Central Pacific – Disturbance 1 in Eastern Pacific moving into Central Pacific; elsewhere, no tropical cyclones expected through Wednesday morning
- Western Pacific – Invest 98W

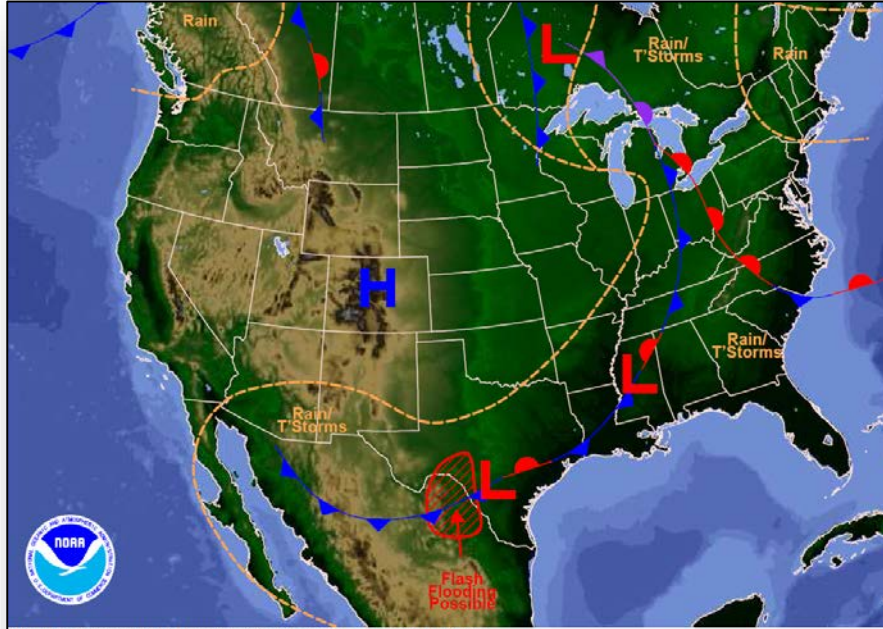
## **Significant Weather:**

- Flash Flooding possible – Southern Plains
- Rain and thunderstorms – Southwest to Southeast, Upper Mississippi Valley, Mid-Atlantic and Great Lakes
- Critical/Elevated Fire Weather – southern CA
- Red Flag Warnings – southern CA
- Space Weather – Minor space weather with G1 geomagnetic storms observed past 24 hours; minor space weather with G1 geomagnetic storms predicted next 24 hours

**Earthquake Activity:** No significant activity

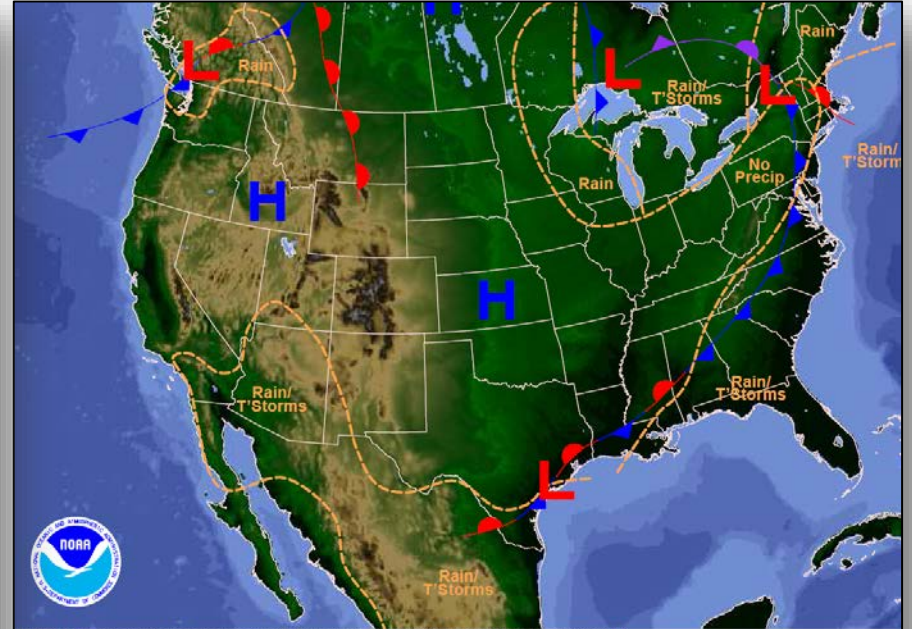
**Declaration Activity:** None

# National Weather Forecast



Weather Forecast for Mon, Sep 26, 2016, issued 4:43 AM EDT  
DOC/NOAA/NWS/NCEP/Weather Prediction Center  
Prepared by McCreynolds based on WPC, SPC and NHC forecasts

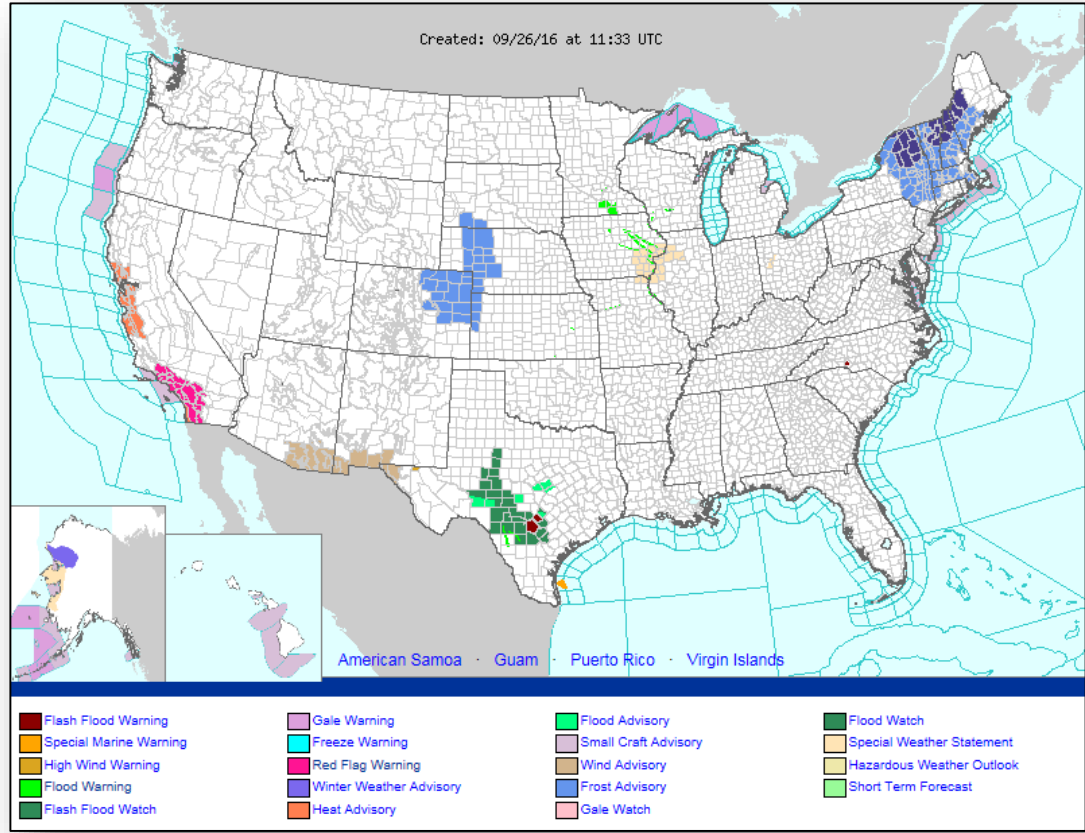
*Today*



Weather Forecast for Tue, Sep 27, 2016, issued 4:46 AM EDT Mon, Sep 26, 2016  
DOC/NOAA/NWS/NCEP/Weather Prediction Center  
Prepared by McCreynolds based on WPC, SPC and NHC forecasts

*Tomorrow*

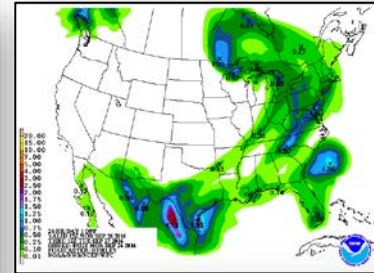
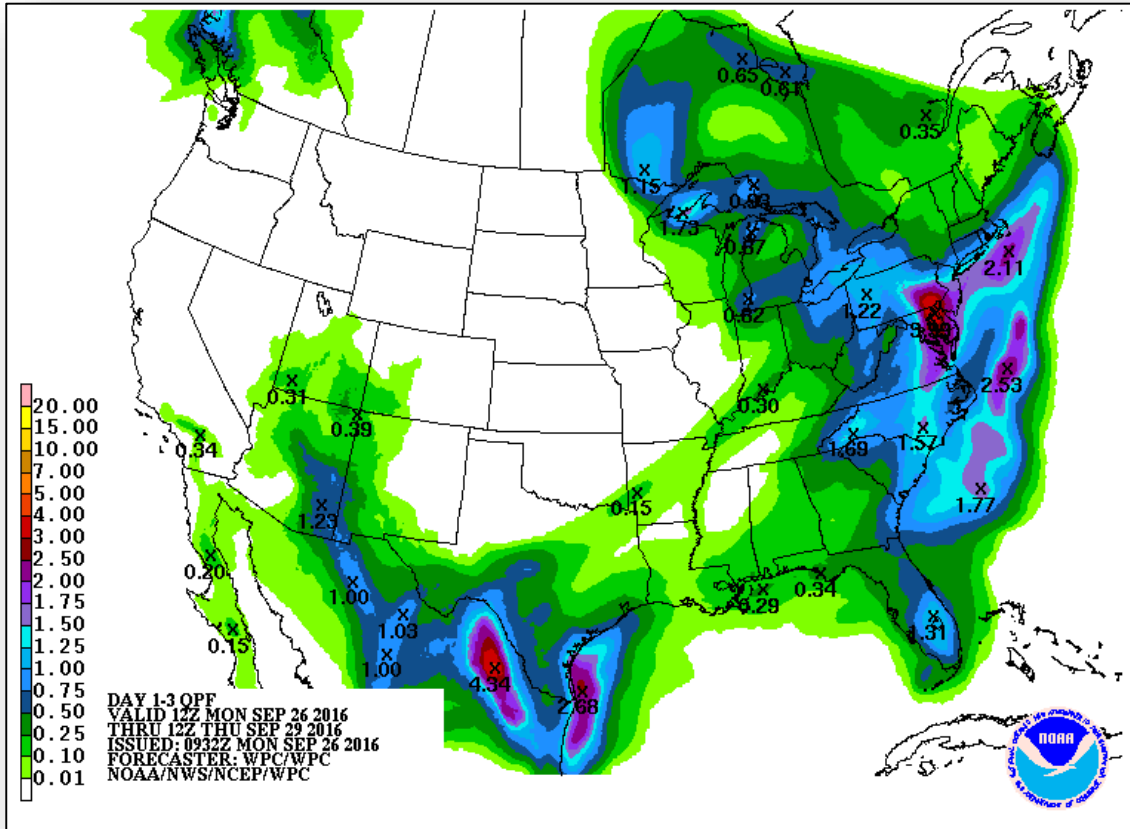
# Active Watches and Warnings



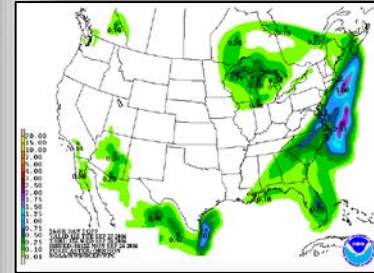
# Precipitation Forecast - Days 1-3



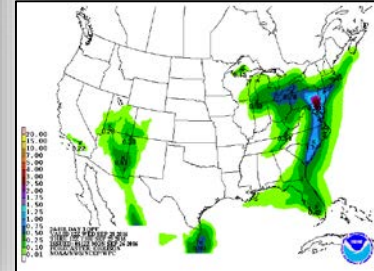
FEMA



Day 1



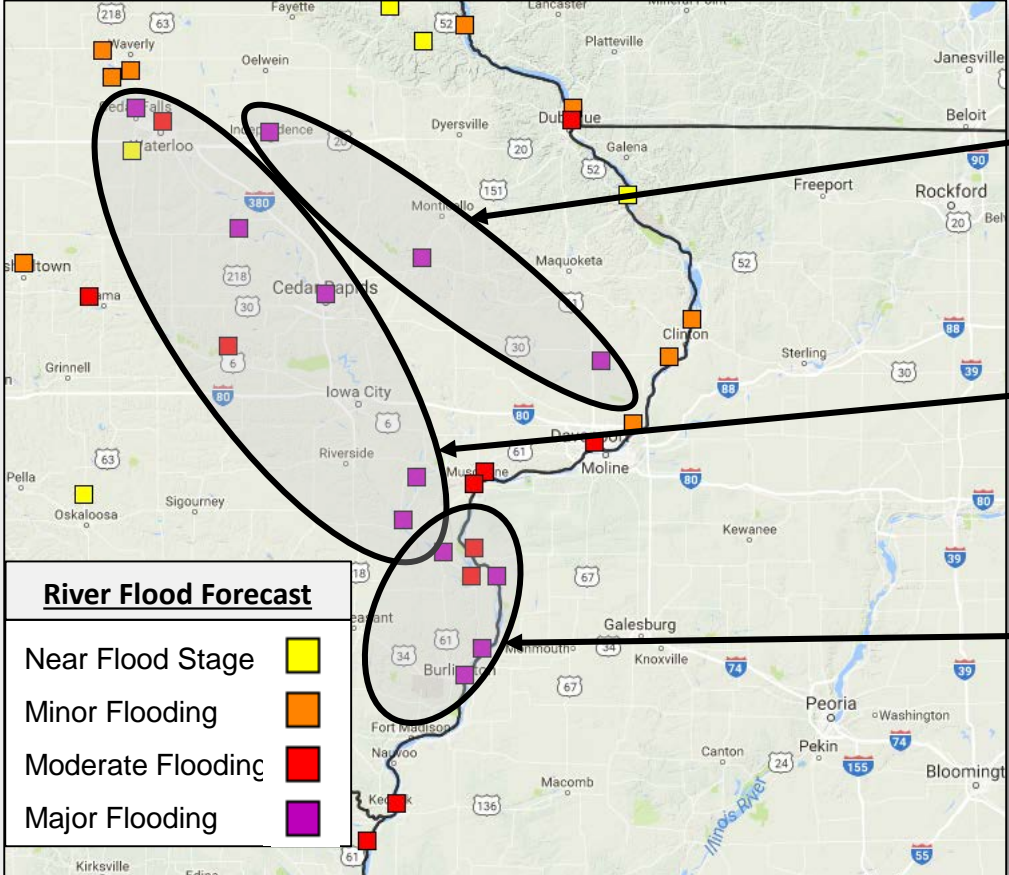
Day 2



Day 3



# Upper Midwest Flooding

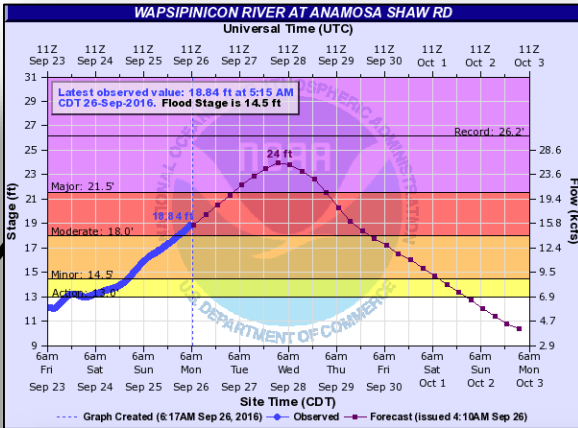
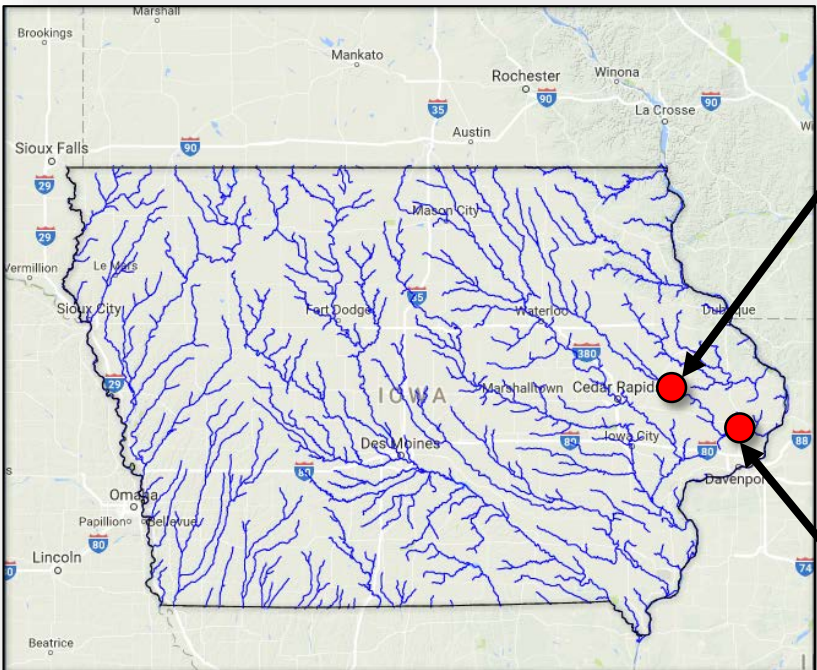


**Wapsipinicon River:**  
Independence (Past Crest) to DeWitt, IA (Crest Late Week)

**Cedar and Iowa Rivers:**  
Cedar Falls (Past Crest) to Oakville, IA (Crest by Weekend)

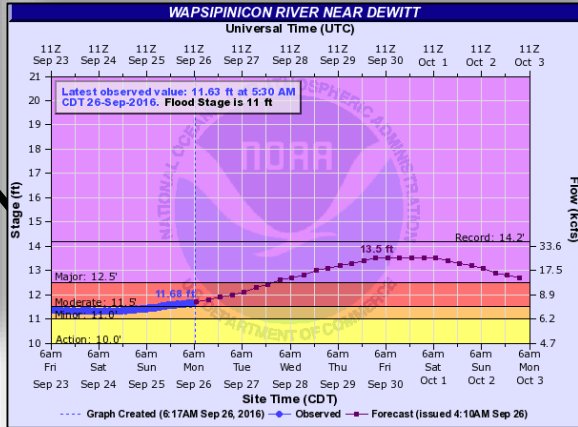
**Mississippi River:**  
Keithsburg, IL to near Keokuk, IA (Crest by Weekend or Early Next Week)

# Wapsipinicon River



**Peak Forecast Crest: 24'**  
by Wednesday

**Impacts:** Bridges and secondary roads are closed

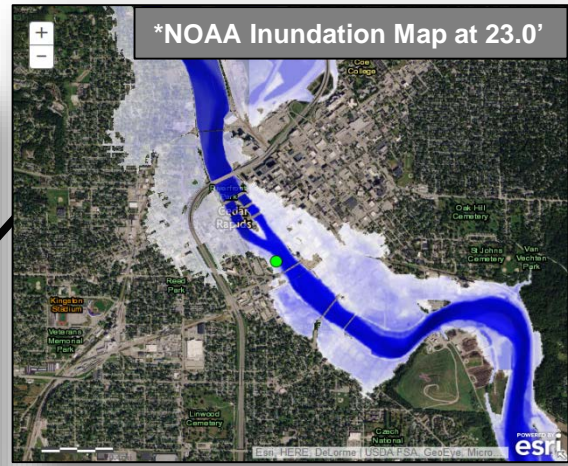
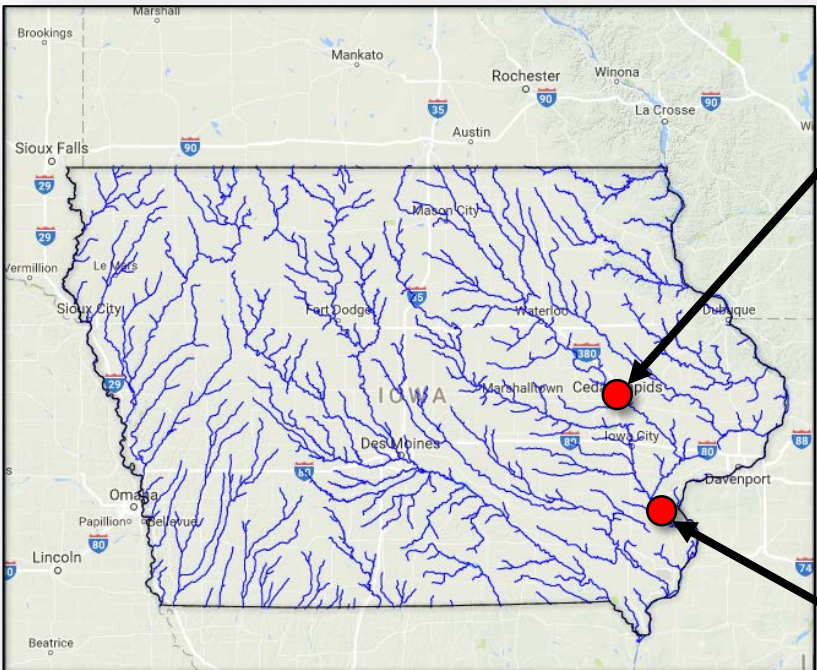


**Peak Forecast Crest: 13.5'**  
by late week

**Impacts:** Water affects residences and businesses along the river between Wheatland and Calamus if no protective measures

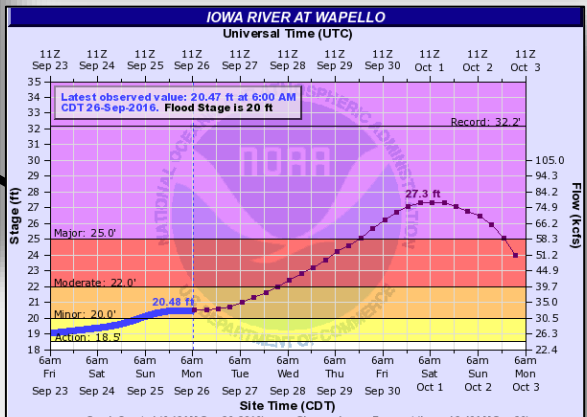


# Cedar and Iowa Rivers



**Peak Forecast Crest: 23'**  
by Tuesday

**Impacts:** Several bridges and roads closed; Levee system overtopped at 22.5'; Voluntary evacuations and curfew in place for impacted areas (~1.500 structures)



**Peak Forecast Crest: 27.3'**  
by this weekend

**Impacts:** Water reaches bottom of U.S. 61 bridge and nearby residences are flooded if no protective measures

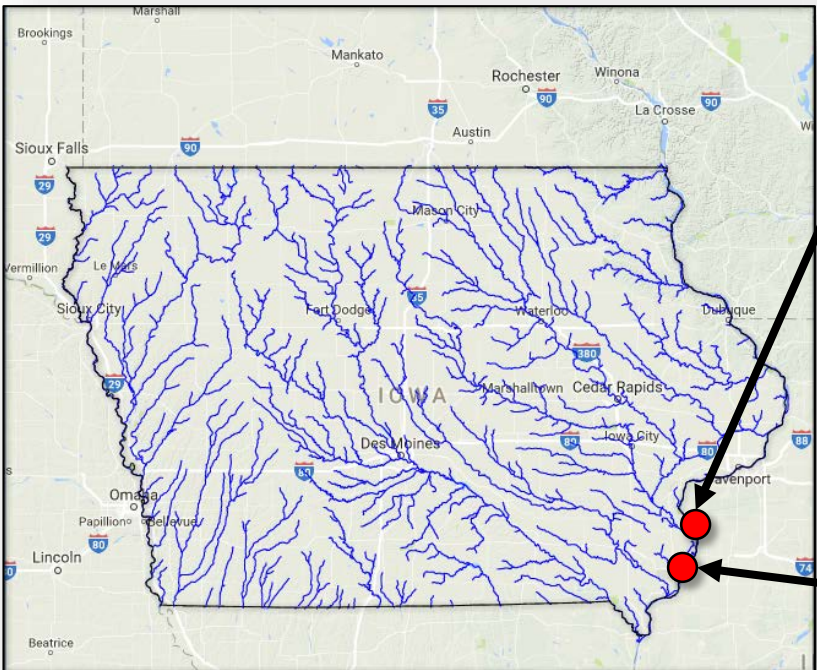
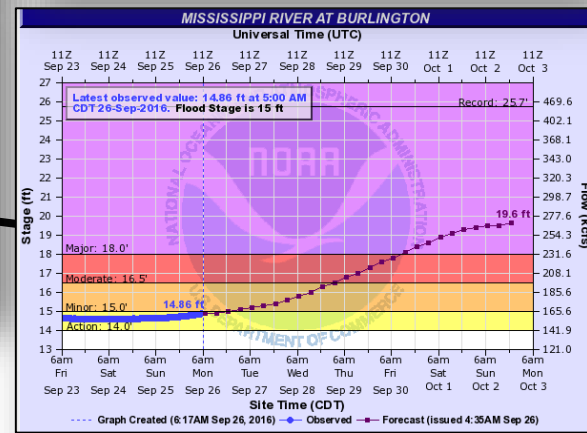
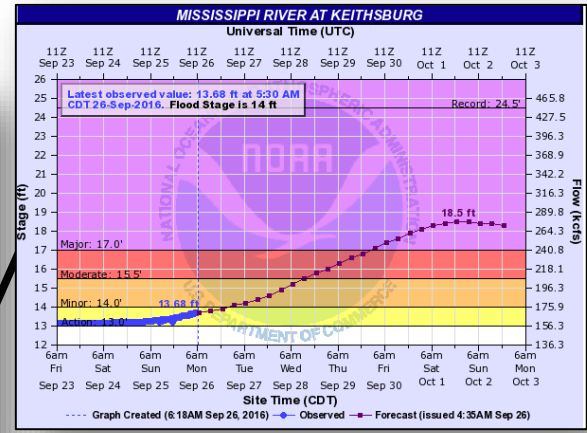
# Mississippi River

**Above Major Flooding by Late Week**

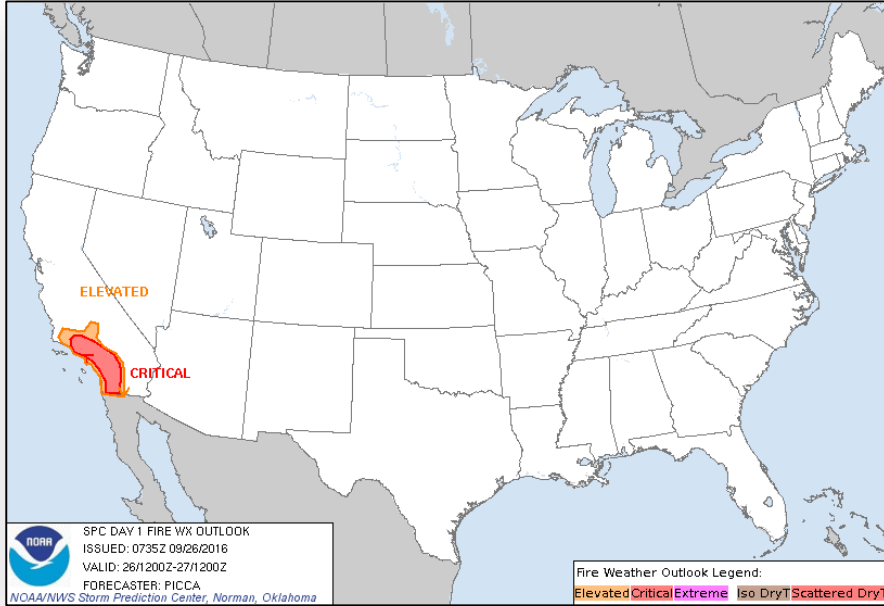
**Impacts:** Water affects city blocks and homes along the river in Keithsburg, IL and Oquawka, IL if no protective measures

**Above Major Flooding by Late Week**

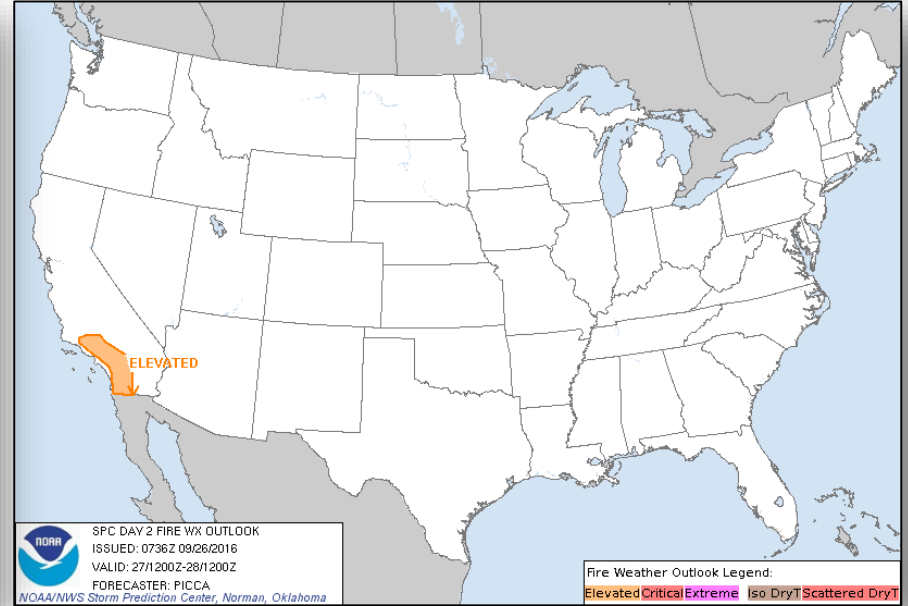
**Impacts:** Water affect roads along the river in Burlington, IA and low-lying buildings and homes in Montrose, IA and Niota, IL if no protective measures



# Fire Weather Outlook



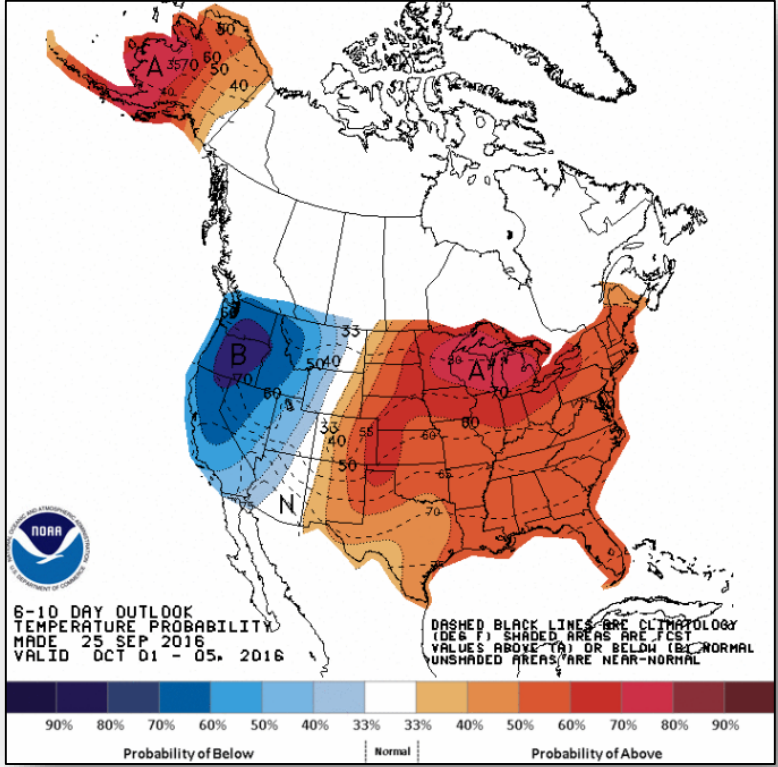
Day 1



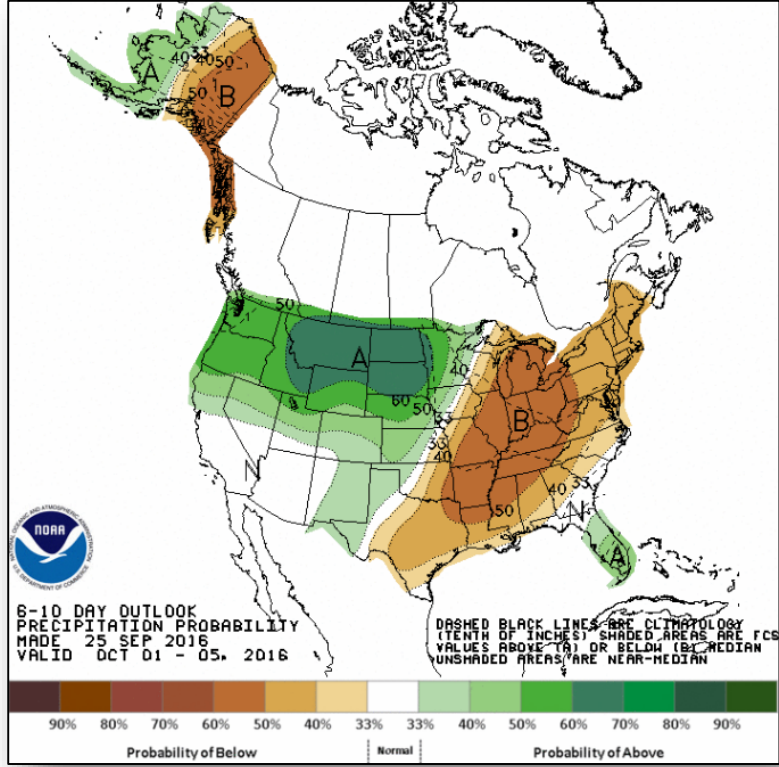
Day 2



# 6-10 Day Outlooks



6 - 10 Day Temperature Probability

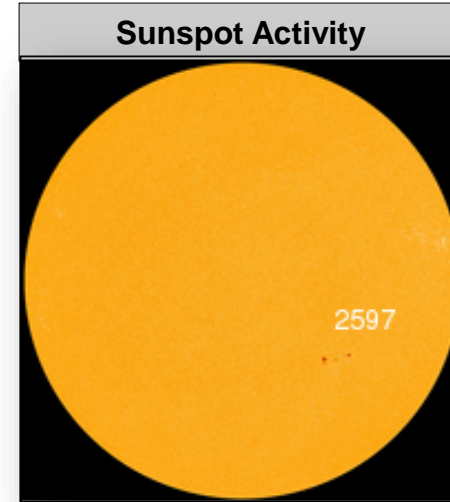
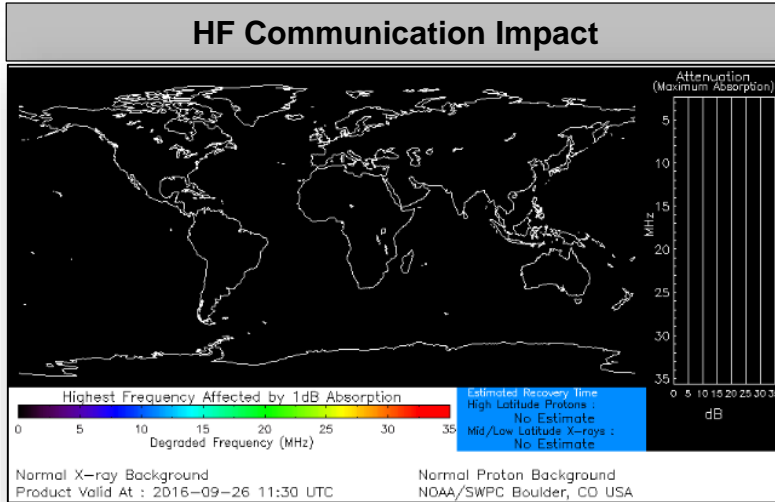


6 - 10 Day Precipitation Probability

# Space Weather

	Space Weather Activity	Geomagnetic Storms	Solar Radiation	Radio Blackouts
Past 24 Hours	Minor	G1	None	None
Next 24 Hours	Minor	G1	None	None

*For further information on NOAA Space Weather Scales refer to <http://www.swpc.noaa.gov/noaa-scales-explanation>*



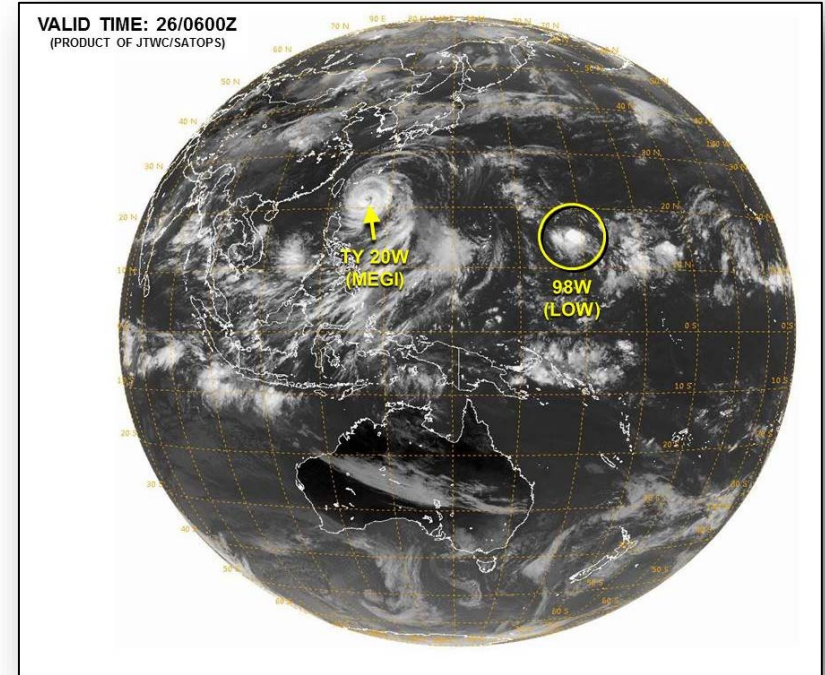


# Tropical Outlook – Western Pacific



## Invest 98W (as of 2:00 a.m. EDT)

- Located 898 miles ENE of Guam
- Moving west next 2-3 days
- Maximum sustained winds 12-17 mph
- Conditions conducive for gradual development
- Tropical depression likely to form later this week
- Formation chance through 24 hours: Low



# Tropical Outlook - Atlantic

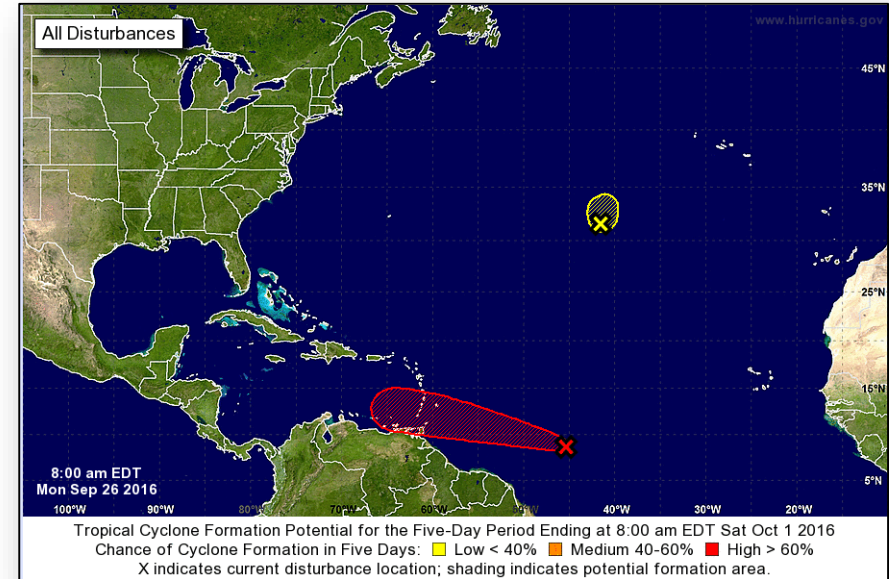


## Disturbance 1 (as of 8:00 a.m. EDT)

- Located 1,100 miles ESE of Windward Islands
- Moving W to WNW at 15-20 mph
- Conditions expected to be conducive for development
- Tropical depression likely to form mid-week
- Formation chance through 48 hours: Medium (60%)
- Formation chance through 5 days: High (90%)

## Disturbance 2 (as of 8:00 a.m. EDT)

- Remnants of Lisa
- Unfavorable conditions for regeneration into a tropical cyclone
- Formation chance through 48 hours: Low (near 0%)
- Formation chance through 5 days: Low (near 0%)

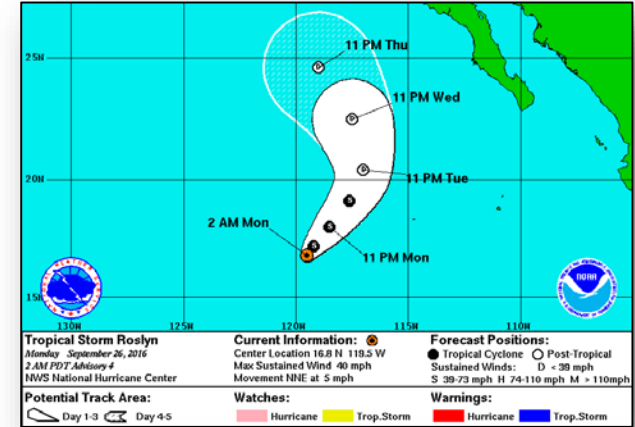


# Tropical Outlook - Eastern Pacific



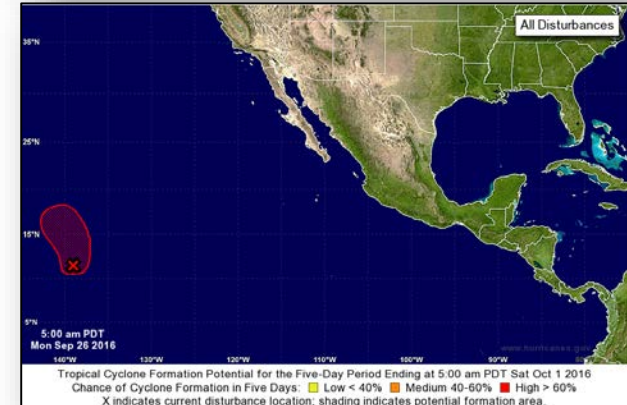
## Tropical Storm Roslyn: (Advisory #4 as of 5:00 a.m. EDT)

- Located 750 miles WSW of southern tip of Baja California Peninsula
- Moving NNE at 5 mph
- Maximum sustained winds 40 mph
- No coastal watches or warnings in effect



## Disturbance 1 (as of 8:00 a.m. EDT)

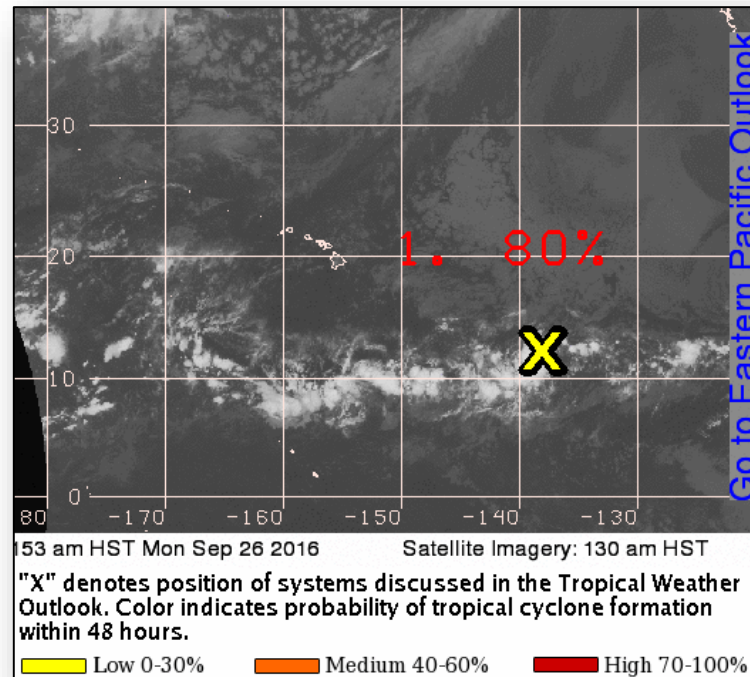
- Located 1,200 miles ESE of Big Island of Hawaii
- Moving very little next day or so, then will turn north later in the week
- Conditions conducive for tropical depression to form later today
- Formation chance through 48 hours: High (70%)
- Formation chance through 5 days: High (80%)



# Tropical Outlook - Central Pacific



- Disturbance 1 (Eastern Pacific) could enter the Central Pacific in the next day or so
- Elsewhere, no other tropical cyclones expected through Wednesday morning



# Joint Preliminary Damage Assessments



Region	State / Location	Event	IA/PA	Number of Counties		Start – End
				Requested	Complete	
IV	Florida	Severe Storms and Flooding (TS Hermine) August 30, 2016 – Ongoing	IA	12	12	9/6 – 9/15
			PA	33	25 (+2)	9/7 – TBD
IX	Hawaii	Flash Flooding and Mudslides Week of September 11, 2016	PA	1	0	9/20 – TBD

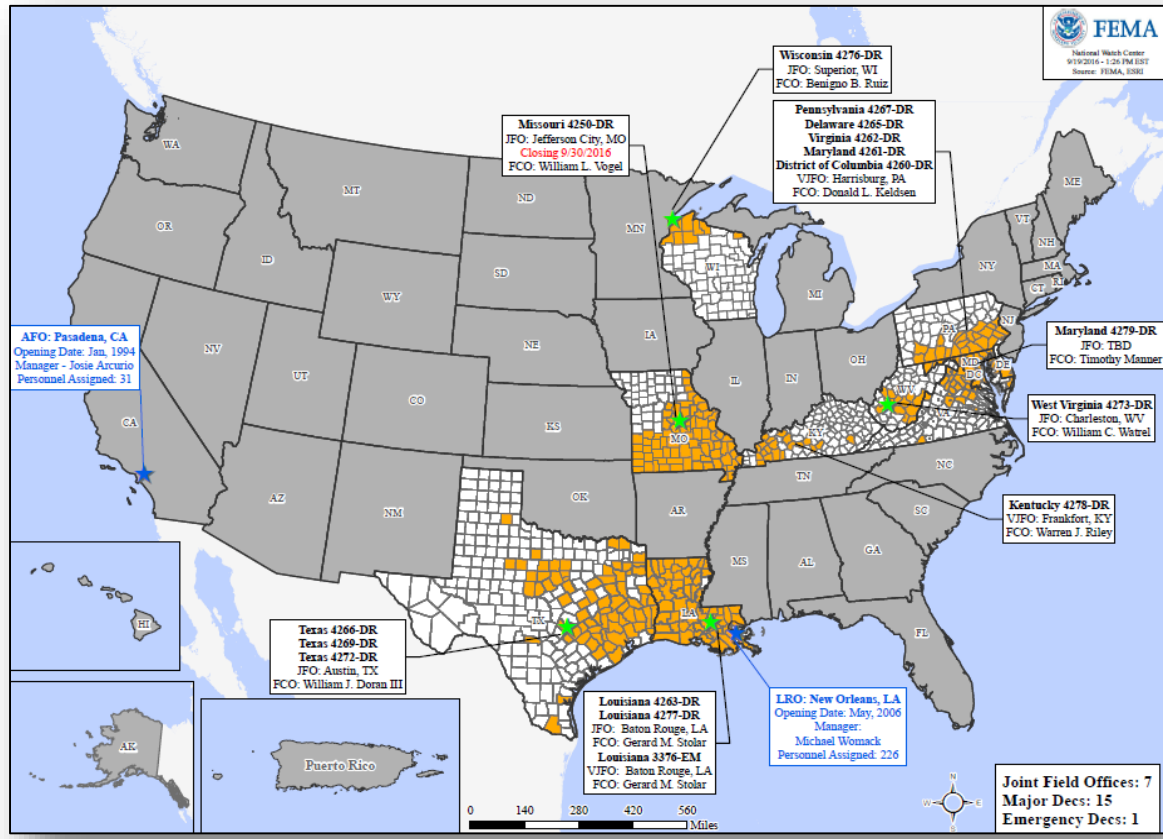


# Disaster Requests & Declarations



<b>Declaration Requests in Process</b>		<b>Requests APPROVED (since last report)</b>	<b>Requests DENIED (since last report)</b>
<b>4</b>	<b>Date Requested</b>	<b>0</b>	<b>0</b>
<b>KS – DR (Appeal) Severe Storms, Tornadoes, Straight-line Winds, and Flooding</b>	<b>August 31, 2016</b>		
<b>IA – DR Severe Storms, Straight-line Winds, and Flooding</b>	<b>September 19, 2016</b>		
<b>FL – DR Hurricane Hermine</b>	<b>September 20, 2016</b>		
<b>Navajo Nation – DR Severe Storms and Flooding</b>	<b>September 21, 2016</b>		

# Open Field Offices as of September 26



# Readiness – Deployable Teams and Assets



Resource	Status	Total	FMC Available		Partially Available	Not Available	Detailed, Deployed, Activated	Comments	Rating Criterion
FCO	Yellow	35	6	17%	0	0	29		OFDC Readiness: FCO    Green    Yellow    Red Type 1   3+        2        1 Type 2   4+        3        2 Type 3   4+        3        2 FDRC    3        2        1
FDRC	Red	10	1	10%	0	3	6		
US&R	Green	28	27	96%	1	0	0	NJ-TF1: Partially Mission Capable	<ul style="list-style-type: none"> <li>Green = Available / FMC</li> <li>Yellow = Available / PMC</li> <li>Red = Out-of-Service</li> <li>Blue = Assigned / Deployed</li> </ul>
National IMAT	Yellow	3	2	67%	0	0	1	East 2 to LA (DR-4277)	<ul style="list-style-type: none"> <li>Green: 3 available</li> <li>Yellow: 1-2 available</li> <li>Red: 0 avail (<i>Individual N-IMAT red if 50% of Section Chiefs and / or Team Leader is unavailable for deployment.</i>)</li> </ul>
Regional IMAT	Green	13	9	69%	0	0	4	<u>Deployed:</u> Region II to LA (DR-4277) Region VI Team 2 to LA (DR-4277) Region VIII to LA (DR-4277) Region X to LA (DR-4277)	<ul style="list-style-type: none"> <li>Green: &gt;6 teams available</li> <li>Yellow: 4 - 6 teams available</li> <li>Red: &lt; 4 teams available</li> </ul> R-IMAT also red if TL Ops / Log Chief is unavailable & has no qualified replacement
MERS	Green	18	17	94%	0	0	1	<u>Assets are supporting:</u> PR (Zika UCG)	<ul style="list-style-type: none"> <li>Green = &gt;66% available</li> <li>Yellow = 33% to 66% available</li> <li>Red = &lt;33% available</li> </ul>

# Readiness – National and Regional Teams



Resource	Status	Total	FMC Available		Partially Available	Not Available	Status	Comments	Rating Criteria
NWC	Green	5	5		0	0	Not Activated		<ul style="list-style-type: none"> <li>• Green = FMC</li> <li>• Yellow = PMC</li> <li>• Red = NMC</li> </ul>
NRCC	Green	2	2	100%	0	0	Not Activated		
HLT	Green	1	1	100%	0	0	Activated		
RRCCs	Green	10	10	100%	0	0	Not Activated		
RWCs/MOCs	Green	10	10	100%	0	0	Activated	Region VII at Enhanced Watch (day shift only) for Iowa flooding	



# FEMA

**FEMA's mission is to support our citizens and first responders to ensure that as a nation we work together to build, sustain, and improve our capability to prepare for, protect against, respond to, recover from, and mitigate all hazards.**