

The Disaster Center is dedicated to the idea that disaster mitigation is cost effective and individuals pursuing their own interest are the greatest potential force for disaster reduction.

Please consider making a small donation to the Disaster Center



When disaster mitigation is cost effective, we are on the road to bringing disasters to an end.



# FEMA

## Daily Operations Briefing

Wednesday, August 31, 2016

8:30 a.m. EDT

# Significant Activity - August 30-31



**Significant Events:** See Tropical Activity

## **Tropical Activity:**

- Atlantic – Hurricane Gaston; Tropical Depression Eight, Tropical Depression Nine, Disturbance 1 – Low (0%)
- Eastern Pacific – Hurricane Lester, Disturbance 1 Low (10%)
- Central Pacific – Hurricane Madeline; Disturbance 3 – Low (30%)
- Western Pacific – No significant activity threatening U.S. interests

## **Significant Weather:**

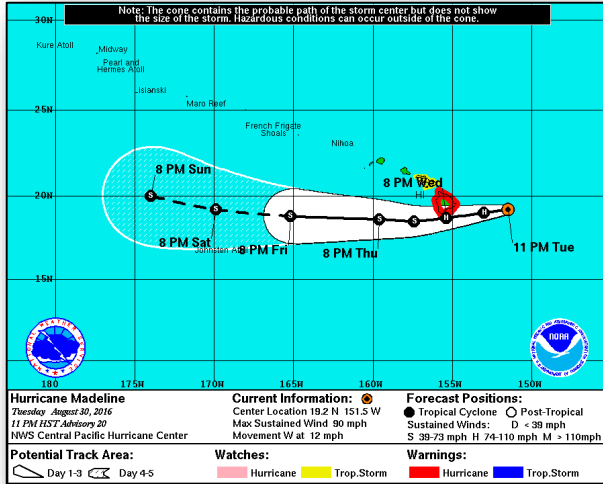
- Isolated thunderstorms – Northern Rockies & Northern Plains
- Flash flooding – NM, TX, OK, KS, NE & FL
- Rain and thunderstorms – Southwest, Rockies, Central and Southern Plains, Upper Mississippi Valley, Ohio Valley, Southeast and the Northeast
- Red Flag Warnings – CA, UT, NV, ID
- Elevated Fire Weather – CA, NV, OR, UT & ID; Isolated Dry Thunderstorms – NV, UT, ID, MT Critical Fire Weather – None
- Space weather – No space weather storms in the last 24 hours; Minor (G-1 level) storms predicted in the next 24 hours

**Earthquake Activity:** No significant activity

## **Declaration Activity:**

- Amendment No.2 to FEMA-4274-DR-OK
- FMAG approved August 31, 2016 – Gold Canyon Fire, OR

# Hurricane Madeline



## Hurricane Madeline CAT-1 (Advisory #20a as of 8:00 a.m. EDT)

- Located 200 miles E of Hilo, Hawaii
- Moving W at 12 mph; expected to continue for next couple days
- Maximum sustained winds at 90 mph
- Steady weakening forecast next 48 hours
- Expected to be hurricane strength when passing HI county
- Hurricane-force winds extend outward up to 25 miles
- Tropical-storm-force Winds extend outward up to 125 miles

## Forecast Impacts

- Hurricane Warning in effect for HI County
- Potentially damaging swells expected to impact eastern facing shorelines of HI County and Maui Island
- Rain accumulations of 5-10 inches with isolated maximum amounts near 15 inches expected across the Big Island; dangerous flash floods and mudslides possible
- May produce 4 inches of rainfall over Maui county

# Hurricane Madeline - Response



## State/Local Response

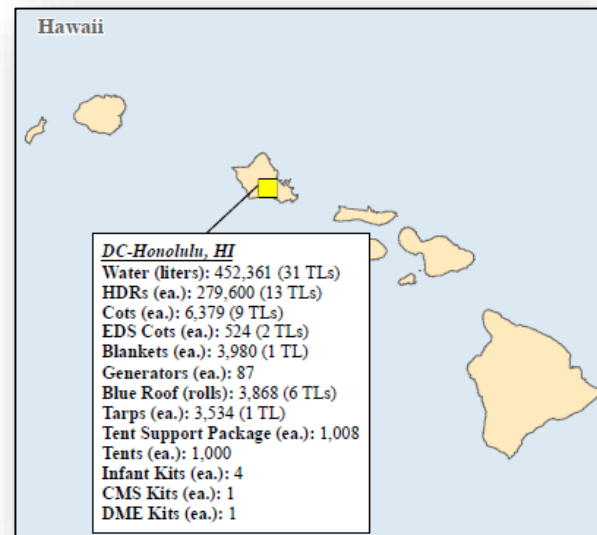
- HI EOC at Partial Activation (10:00 p.m. to 6:45 a.m. EDT)
- Hawaii County EOC at Level II, 24/7
- Maui County EOC at Level II
- Kauai County at Level II (Enhanced Steady State)
- City and county of Honolulu at normal operations
- American Red Cross teams deploying to HI
- HI County ports closed; USCG monitoring
- Airports open; DOT monitoring
- DOE energy restoration team deploying to HI
- 19 shelters open with no occupants (ARC midnight shelter count, 7:37 am EDT)

## Region IX

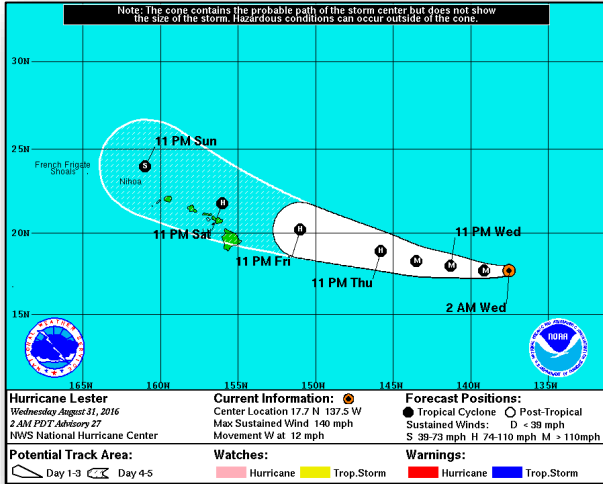
- RWC at Enhanced Watch (24/7)
- RRCC at Level II day shift; Level III night shift
- IMAT 1 deployed to HI
- ESFs 2, 3, 8, 12, USCG & DCE deploying to HI
- Additional HLT LNO deployed to HI

## Federal Response – FEMA HQ

- NRCC at Level II, 24/7 with ESFs 2, 3, 5, 6, 7, 8, 12, 15 and all LNOs
- ISB personnel deployed to DC HI
- National IMAT East-1 deployed to AL (exercise) but placed on Alert
- MERS personnel deploying to PAO at Ft. Shafter in Honolulu
- FEMA Corps teams deploying to PAO
- USACE monitoring; debris SME already in HI



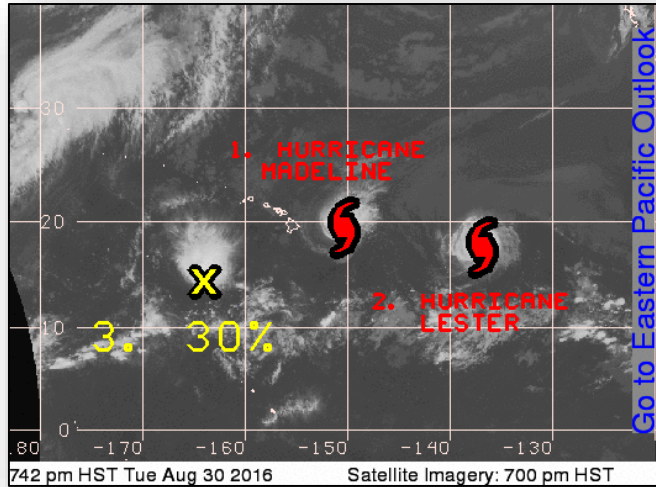
# Hurricane Lester



## Hurricane Lester CAT-4 (Advisory #27 as of 5:00 a.m. EDT)

- Located 1,160 miles E of Hilo, HI
- Moving W at 12 mph
- Maximum sustained winds at 140 mph
- Expected to turn slightly W or WNW in the next two days
- Gradual weakening forecast next 48 hours
- Hurricane-Force Winds extend outward up to 35 miles
- Tropical-Storm-Force Winds extend outward up to 90 miles
- No coastal Watches and Warnings in effect

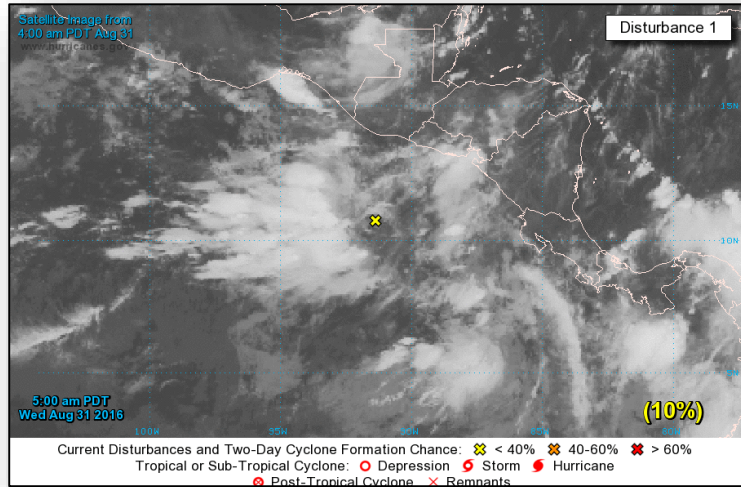
# Tropical Outlook - Central Pacific



## Disturbance 3 (as of 8:00 a.m. EDT)

- Located 600 miles SW of Honolulu, Hawaii
- Moving W
- Any development will be slow to occur
- Formation chance through 48 hours: low (30%)

# Tropical Outlook - East Pacific

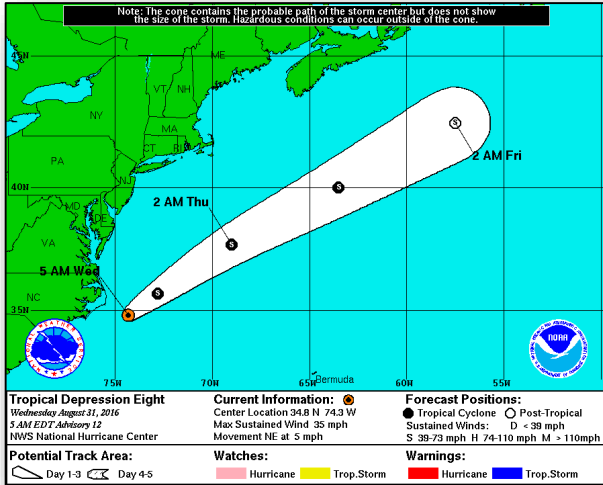


## Disturbance 1 (as of 8:00 a.m. EDT)

- Located a few hundred miles S of Guatemala
- Become conducive for development
- Moving WNW
- Formation chance through 48 hours: low (10%)
- Formation chance through 5 days: High (70%)



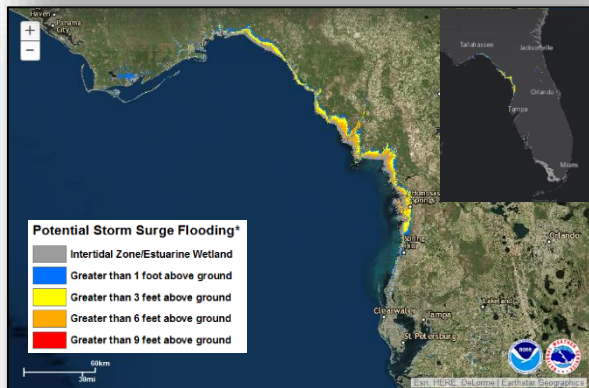
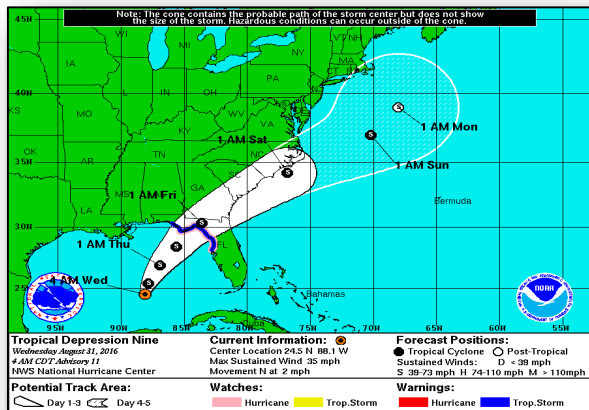
# Tropical Outlook - Atlantic



## Tropical Depression EIGHT (Advisory #12 as of 5:00 a.m. EDT)

- Located 75 miles ESE of Cape Hatteras, NC; moving NE at 5 mph
- Maximum sustained winds at 35 mph
- Expect an increase in forward speed next couple of days
- Some strengthening still possible and could become a tropical storm today

# Tropical Outlook - Atlantic



## Tropical Depression NINE (Advisory #11, as of 5:00 a.m. EDT)

- A turn NNE expected later today; approaching FL coast on Thursday afternoon
- Strengthening forecast next 48 hours; expected to be a tropical storm later today, and be hurricane strength by landfall
- Tropical Storm watch in effect for west of Indian Pass to Walton/Bay County line

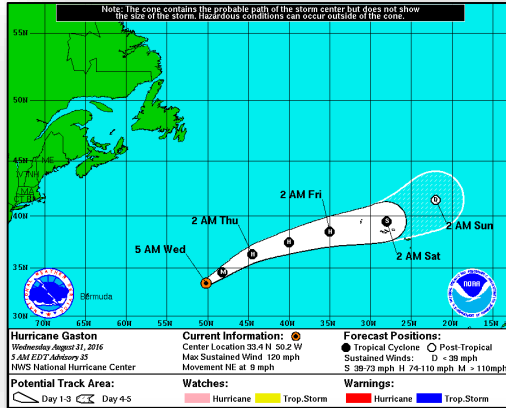
## Tropical Depression NINE (Advisory #11, as of 5:00 a.m. EDT)

- Hurricane watch in effect for Anclote River to Indian Pass
- Tropical Storm warning in effect for west of Indian Pass to Walton/Bay County line
- Rainfall of 5 - 10 inches over FL peninsula with isolated max amounts of 15 inches
- Flooding and flash flooding possible
- Storm surge and tide could produce potentially life-threatening inundation along FL Gulf Coast from Aripeka to Indian Pass
- Coastal areas of GA and the Carolinas can expect 4 – 7 inches of rain through Saturday

## Response

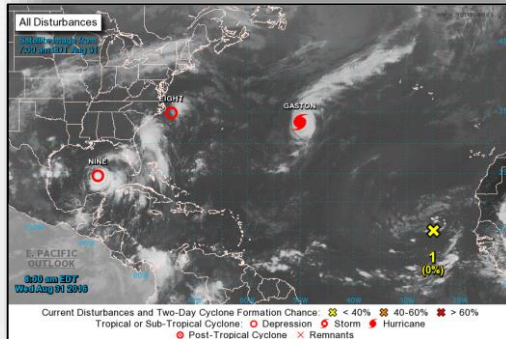
- FL EOC partially activated

# Tropical Outlook - Atlantic



## Hurricane Gaston CAT-3 (Advisory #35 as 5:00 a.m. EDT)

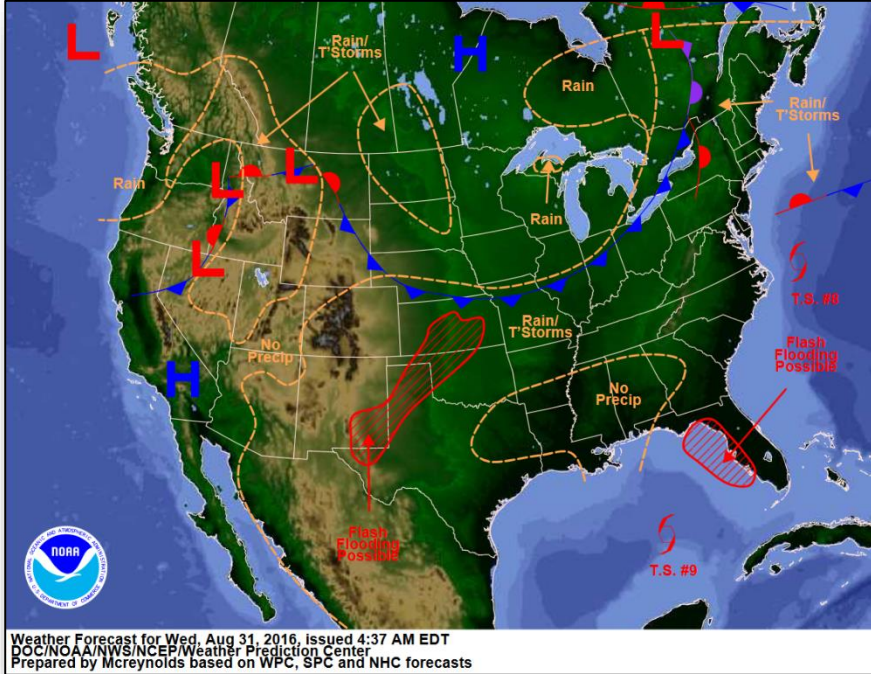
- Located 850 miles E of Bermuda; moving NE at 9mph
- Little change in strength is expected tonight
- Maximum sustained winds at 120 mph
- Hurricane-force winds extend outward up to 45 miles
- Tropical-storm-force Winds extend outward up to 160 miles
- No coastal watches and warnings in effect



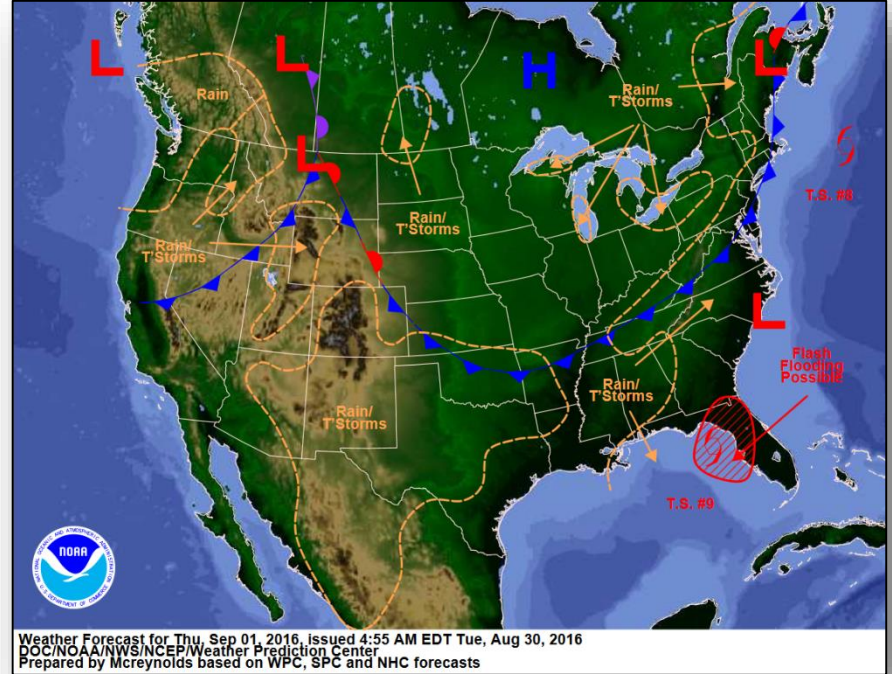
## Disturbance 1 (as of 8:00 p.m. EDT)

- Weak area of low pressure located near Cabo Verde Islands
- Moving W at 15 to 20 mph
- Conditions expected to become favorable late this week
- Formation chance through 48 hours: Low (near 0%)
- Formation chance through 5 days: Medium (40%)

# National Weather Forecast

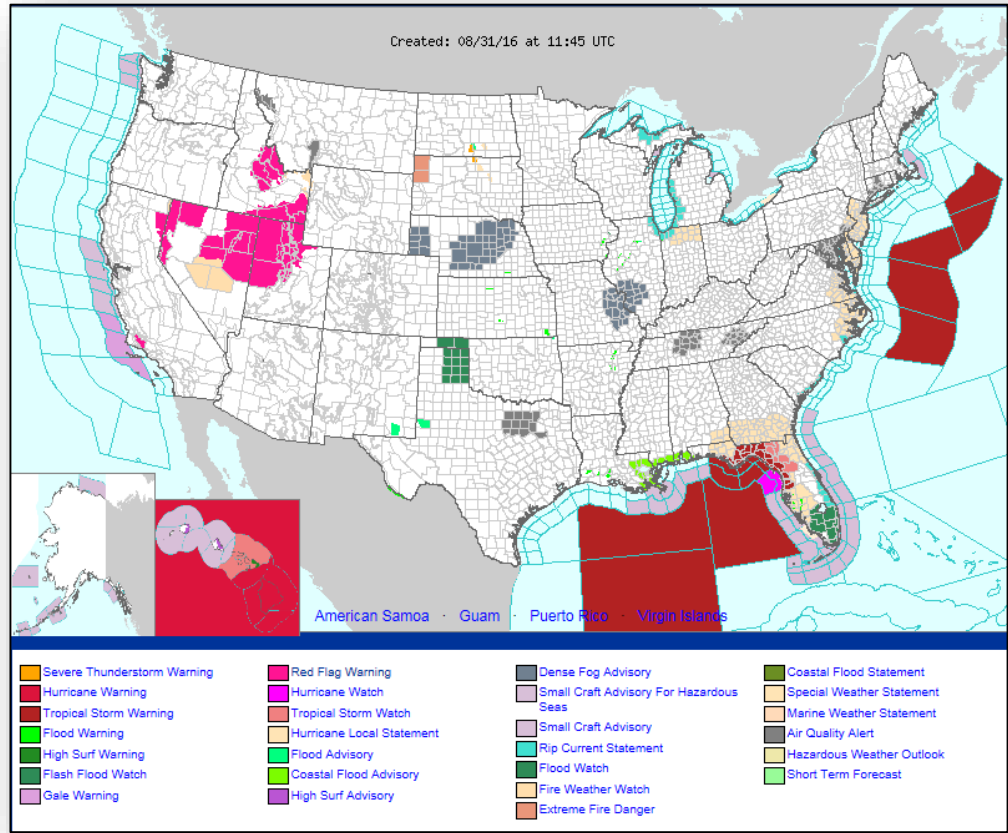


*Today*

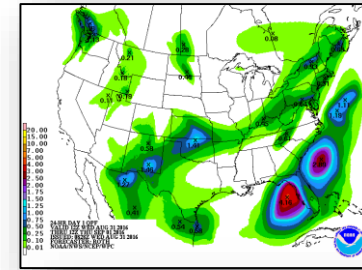
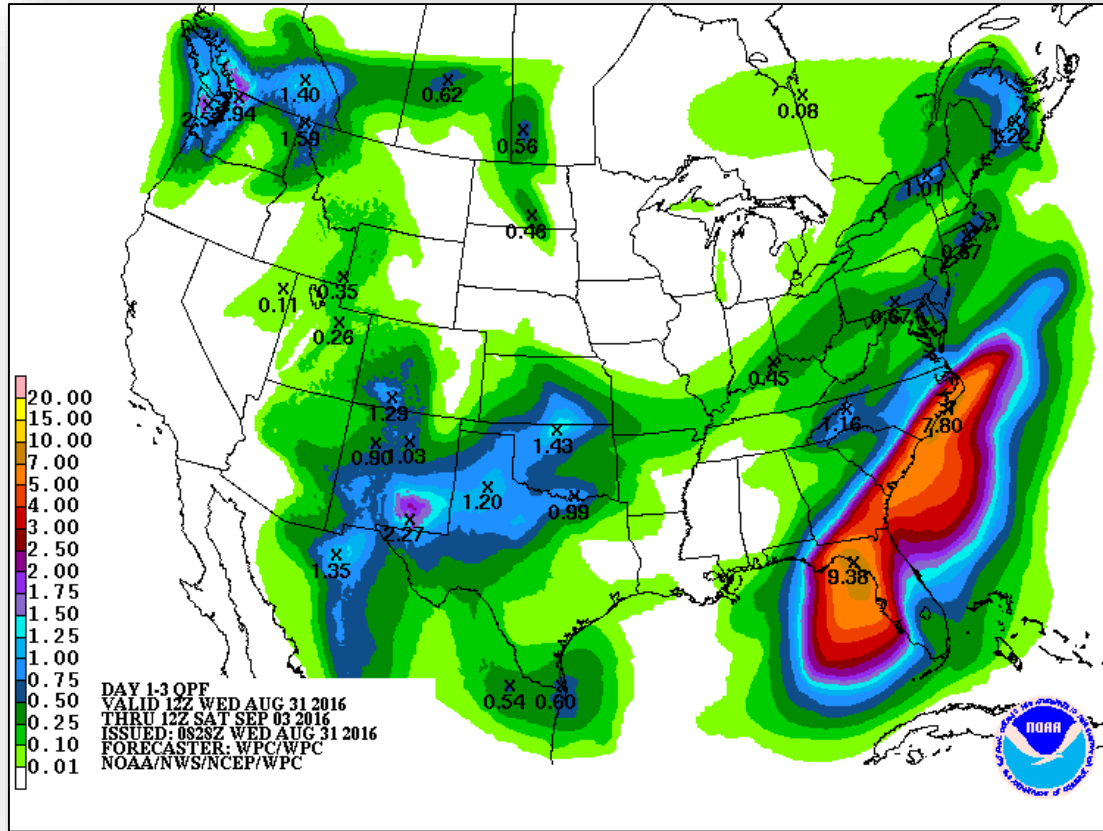


*Tomorrow*

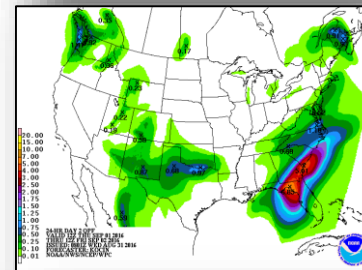
# Active Watches & Warnings



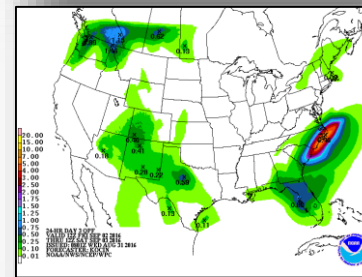
# Precipitation Forecast - Days 1-3



Day 1

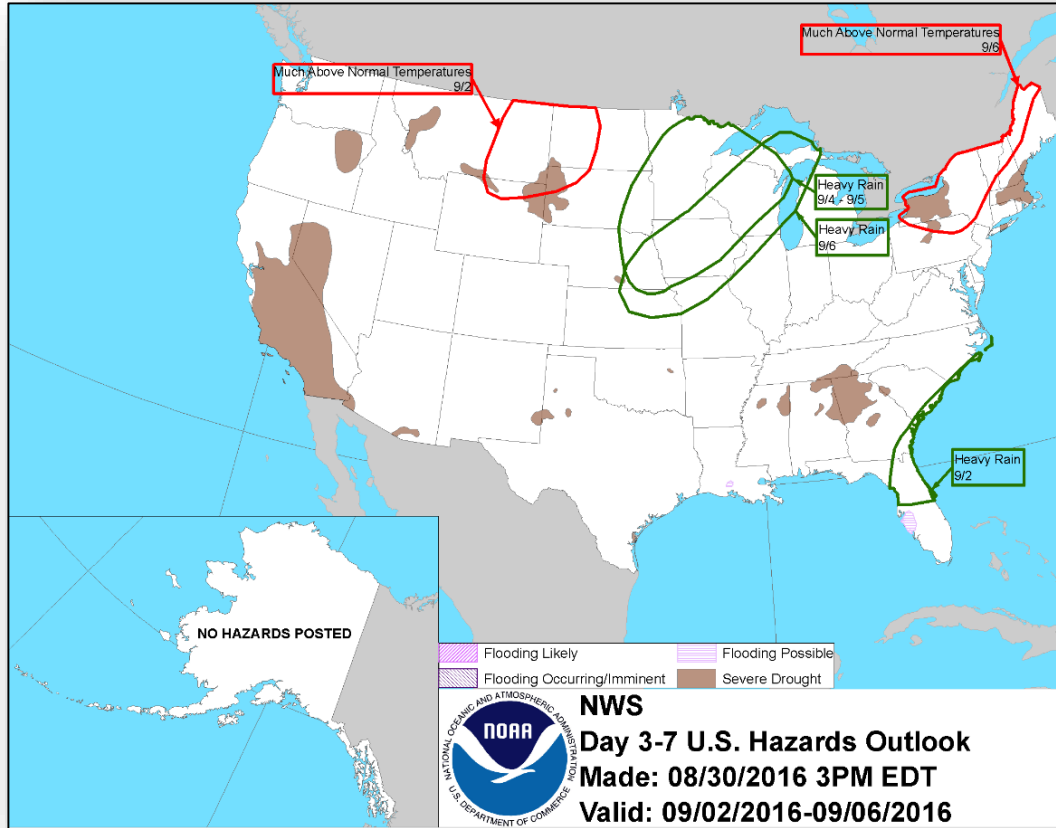


Day 2



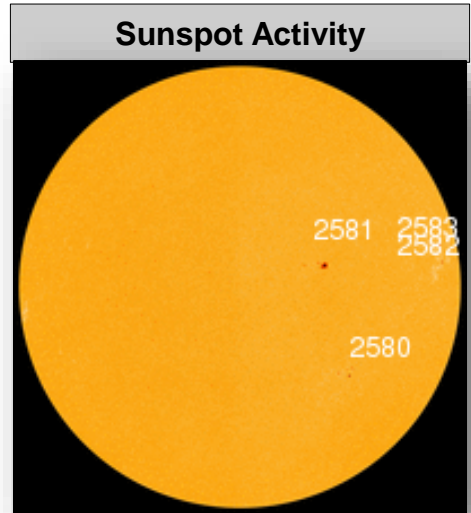
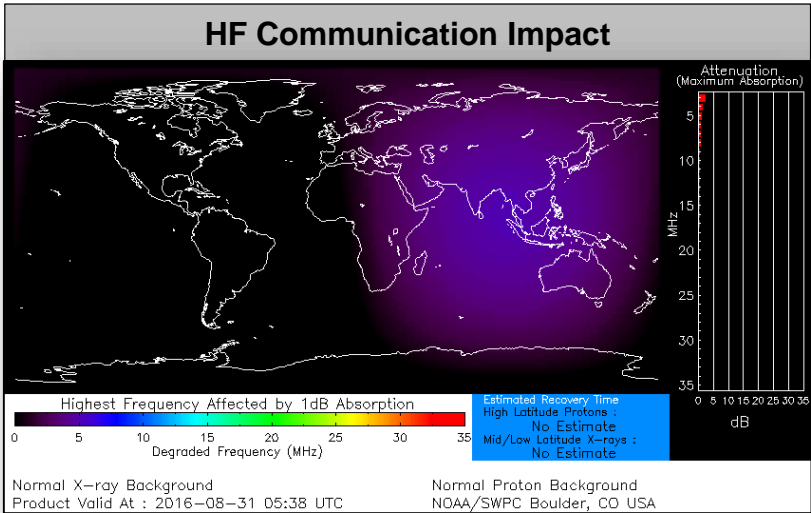
Day 3

# Hazards Outlook - Sep 2-6



# Space Weather

	Past 24 Hours	Current	Next 24 Hours
Space Weather Activity	None	None	Minor
Geomagnetic Storms	None	None	G1
Solar Radiation Storms	None	None	None
Radio Blackouts	None	None	None





# Wildfire Summary



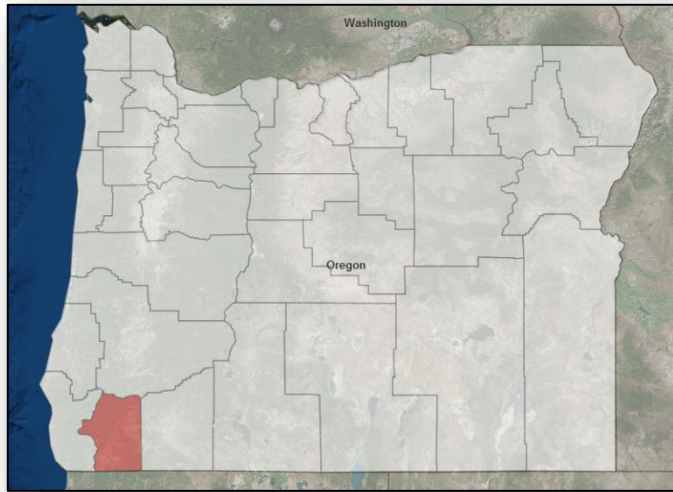
Fire Name (County)	FMAG #	Acres burned	% Contained	Evacuations (Residents)	Structures Threatened	Structures Damaged / Destroyed	Fatalities / Injuries
<b>California (1)</b>							
Cedar Fire (Kern & Tulare Counties)	FEMA-5150-FM-CA	29,322 (+116)	70% (+10)	Voluntary	1,381 (1,294 homes)	0 / 6 homes	0 / 7 (+2)
<b>Washington (1)</b>							
Suncrest Fire ( <i>FINAL</i> ) (Chelan County)	FEMA-5152-FM-WA	390 (-106)	75% (+25)	Lifted	118 homes	0 / 0	0 / 1

# Gold Canyon Fire - Oregon



Fire Name (County)	FMAG #	Acres burned	% Contained	Evacuations (Residents)	Structures Threatened	Structures Damaged / Destroyed	Fatalities / Injuries
Gold Canyon (Josephine County)	FEMA-5153-FM-OR	120	0%	Mandatory	105 homes	0 / 0	0 / 0

- FMAG approved August 31, FEMA-5153-FM-OR
- Fire began August 30 and is burning near Selma (pop 1,934) on state and private land
- 120 acres burned; 0% contained
- 105 homes threatened
- Also threatening a campground, high voltage transmission lines and agricultural interests
- Mandatory evacuations in effect for 660 residents
- Shelters have been established



# FMAG Requests and Declarations



Action (since last report)		Total	FMAG No. and State		
Requests DENIED		0			
Requests APPROVED		1	FEMA-5153-FM; Oregon		
Approved FMAG Data					
Year	Current YTD	MTD	*Monthly Average	Cumulative Acres Burned YTD	Cumulative Denied FMAGs YTD
2016	36	14	13.3	313,839	3
Year	Total Previous FY	**Yearly Average		Total Acres Burned Previous Year	Total Denied FMAGs Previous Year
2015	33	36		250,658	2
* Reflects the 3-year average for current month/ ** Reflects 3-year total average					

# Joint Preliminary Damage Assessments



Region	State / Location	Event	IA/PA	Number of Counties		Start - End
				Requested	Complete	
III	MD	Severe Weather & Heavy Rains July 30, 2016	PA	1	0	8/4 – TBD
X	Spokane Reservation	Cayuse Mountain Wildfire August 21, 2016 and continuing	IA	1	0	9/7 – TBD
			PA	1	0	9/7 - TBD

# Disaster Requests & Declarations



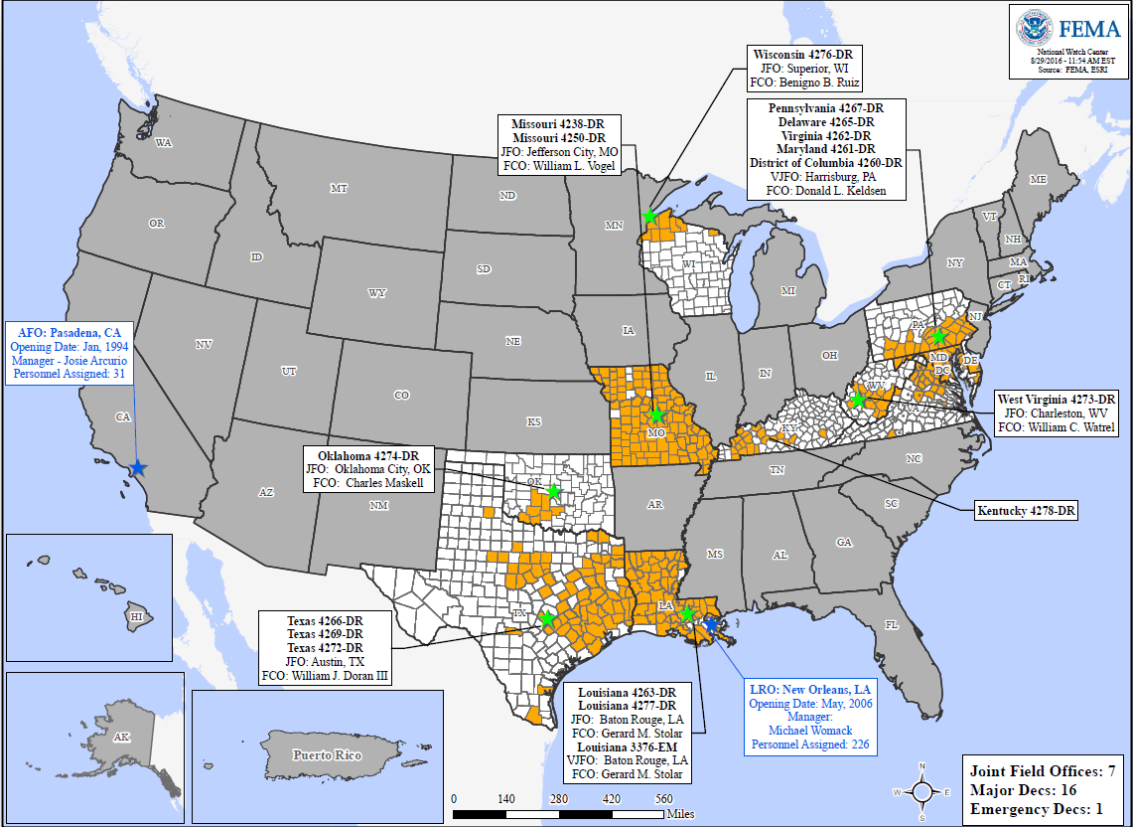
Declaration Requests in Process		Requests APPROVED (since last report)	Requests DENIED (since last report)
1	Date Requested	0	0
MD – DR Severe Storms and Flooding	August 12, 2016		

# Disaster Amendments



Amendment	Effective Date	Action
Amendment No.2 to FEMA-4274-DR-OK	August 30, 2016	Adds Jackson County for PA

# Open Field Offices as of August 31, 2016



# FEMA Readiness - Deployable Teams & Assets



Resource	Status	Total	FMC Available		Partially Available	Not Available	Detailed, Deployed, Activated	Comments	Rating Criterion
FCO	Yellow	36	8	22%	0	2	26		OFDC Readiness: FCO    Green    Yellow    Red Type 1   3+       2       1 Type 2   4+       3       2 Type 3   4+       3       2 FDRC     3       2       1
FDRC	Red	10	1	10%	0	3	6		
US&R	Green	28	27	96%	1	0	0	NJ-TF1: Partially Mission Capable	<ul style="list-style-type: none"> <li>• Green = Available / FMC</li> <li>• Yellow = Available / PMC</li> <li>• Red = Out-of-Service</li> <li>• Blue = Assigned / Deployed</li> </ul>
National IMAT	Yellow	3	2	66%	0	0	1	East 2 deployed to LA (DR-4277) East 1 & West deployed Aug 28-Sep 2 to AL (Exercise)	<ul style="list-style-type: none"> <li>• Green: 3 available</li> <li>• Yellow: 1-2 available</li> <li>• Red: 0 avail (<i>Individual N-IMAT red if 50% of Section Chiefs and / or Team Leader is unavailable for deployment.</i>)</li> </ul>
Regional IMAT	Yellow	13	6	46%	1	0	6	Region III reconstituting <b>Deployed:</b> Region II to LA (DR-4277) Region V to WI (DR-4276) Region VI Team 2 to LA (DR-4277) Region VIII to LA (DR-4277) Region IX Team-1 deployed HI for Madeline Region X to LA (DR-4277)	<ul style="list-style-type: none"> <li>• Green: &gt;6 teams available</li> <li>• Yellow: 4 - 6 teams available</li> <li>• Red: &lt; 4 teams available</li> </ul> R-IMAT also red if TL Ops / Log Chief is unavailable & has no qualified replacement
MERS	Green	18	14	78%	0	0	4	<b>Assets are supporting:</b> PR (Zika UCG) LA (DR-4277) HI (Madeline) AL (Training) MS (DR-4268)	<ul style="list-style-type: none"> <li>• Green = &gt;66% available</li> <li>• Yellow = 33% to 66% available</li> <li>• Red = &lt;33% available</li> </ul>



# FEMA Readiness - National & Regional Teams



Resource	Status	Total	FMC Available		Partially Available	Not Available	Status	Comments	Rating Criteria
NWC	Green	5	5	100%	0	0	Not Activated		<ul style="list-style-type: none"> <li>• Green = FMC</li> <li>• Yellow = PMC</li> <li>• Red = NMC</li> </ul>
NRCC	Green	2	2	100%	0	0	Activated	Activated to Level II (Hurricane Madeline)	
HLT	Green	1	1	100%	0	0	Activated		
DEST	Green						Not Activated		
RRCCs	Green	10	9	90%	0	1	Activated	Region IX at Level II (Day shift) / Level III (Night shift)	
RWCs/MOCs	Green	10	9	90%	0	1	Activated	Region IX at Enhanced Watch (24/7)	



# FEMA

**FEMA's mission is to support our citizens and first responders to ensure that as a nation we work together to build, sustain, and improve our capability to prepare for, protect against, respond to, recover from, and mitigate all hazards.**