

The Disaster Center is dedicated to the idea that disaster mitigation is cost effective and individuals pursuing their own interest are the greatest potential force for disaster reduction.

Please consider making a small donation to the Disaster Center



When disaster mitigation is cost effective, we are on the road to bringing disasters to an end.



FEMA

Daily Operations Briefing

Saturday, August 13, 2016

8:30 a.m. EDT

Significant Activity - August 12-13



Significant Events: Gulf Coast Flooding

Tropical Activity:

- Atlantic – No tropical cyclones expected next 48 hours
- Eastern Pacific – Disturbance 1 (Low 0%)
- Central Pacific – No tropical cyclones expected through early Monday morning
- Western Pacific – Tropical Depression 09W

Significant Weather:

- Flash Flooding – Southern Plains through the Lower/Middle Mississippi & Ohio valleys, and the Northeast
- Rain & Thunderstorms – Southwest to the Southeast and through the Mississippi & Ohio valleys, Northern Plains, Great Lakes, and Northeast
- Excessive Heat Advisories/Warnings – Mid-Atlantic to New England
- Critical/Elevated Fire Weather Outlook – None
- Red Flag Warnings – CA & OR
- Space Weather – No space weather observed in past 24 hours; no space weather predicted for the next 24 hours

Earthquake Activity: No significant activity

Declaration Activity: Request for Major Disaster Declaration - MD

Flooding – Gulf Coast



Current Situation

- A slow-moving system with anomalously high tropical moisture will continue to produce heavy rainfall along the central Gulf Coast and Lower Mississippi Valley through the weekend. The primary threat will be flash flooding and river flooding.

Impacts

Mississippi

- 2 injuries (Harrison County); no fatalities
- 40 homes/mobile homes and 7 apartment units uninhabitable
- Mandatory evacuations in effect for town of Crosby (pop. 318) in Amite & Wilkinson counties, and Osyka (pop. 481) in Pike County
- 1 shelter open with 56 occupants (*ARC Midnight Shelter Count as of 7:21 a.m. EDT*)
- 27 roads closed due to flooding and debris in Copiah, Wilkinson and Harrison counties
- No Amtrak service southbound from Chicago to New Orleans due to water on tracks near Osyka; bus bridge in place
- No significant power outages

Louisiana

- 1 confirmed fatality; 1 missing (*Region VI update as of 1:45 a.m. EDT*)
- Numerous homes and businesses flooded
- 15 rivers have exceeded record flood stage; evacuations likely in areas around Kentwood, Liverpool and Robert rivers
- High water rescues are on-going throughout Southern LA.
- 16 shelters open with 481 occupants (*ARC Midnight Shelter Count as of 7:21 a.m. EDT*)
- Portions of I-10 and I-55 closed; several highways closed due to high water
- 18k customers without power (*DOE Eagle-I as of 7:25 a.m. EDT*)

Flooding – Gulf Coast



State Response

Mississippi

- EOC remains at Normal Operations
- State assistance requested for additional sandbags
- Damage assessments ongoing for Hancock, George, Jackson, Harrison and Amite counties

Louisiana

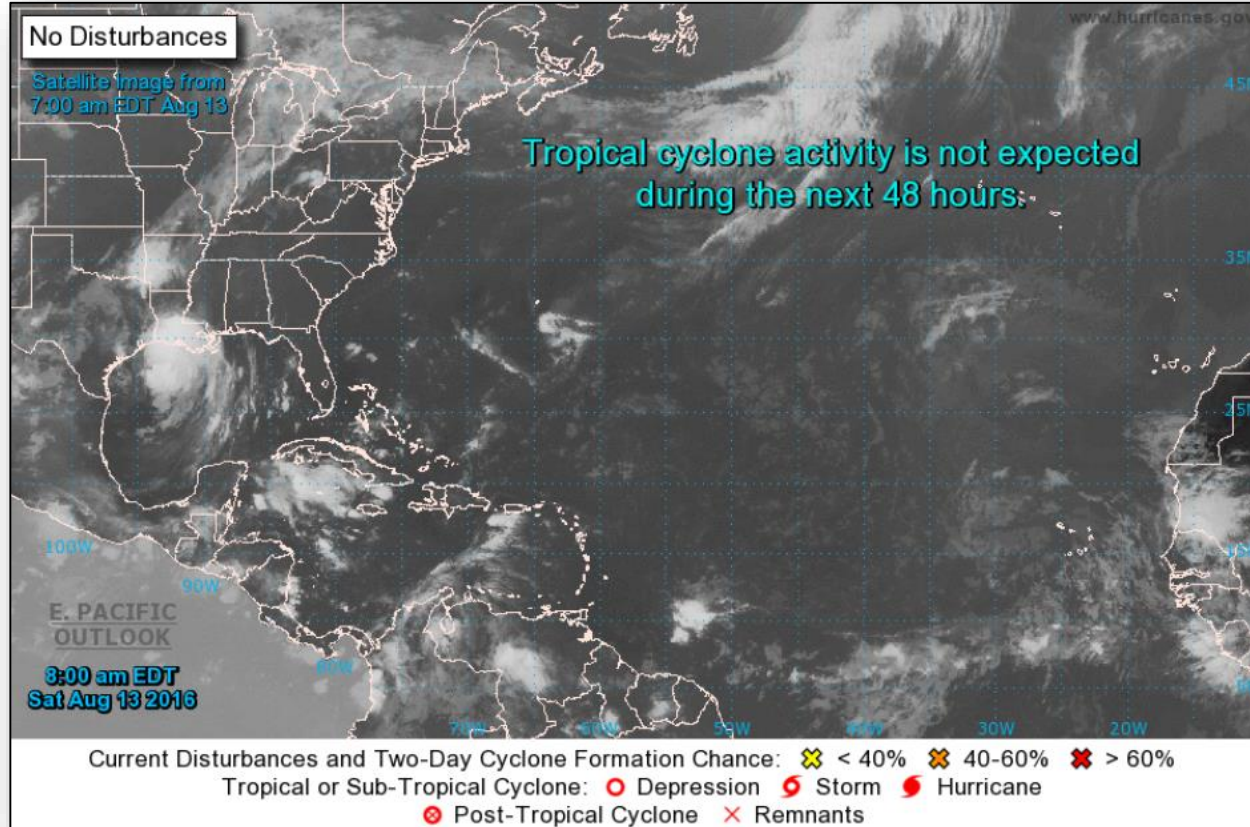
- EOC at Partial Activation (24/7)
- Governor declared State of Emergency for impacted parishes
- National Guard providing response support to local parishes
- Fish and Wildlife assisting in local search & rescue
- Damage assessments ongoing

Federal Response

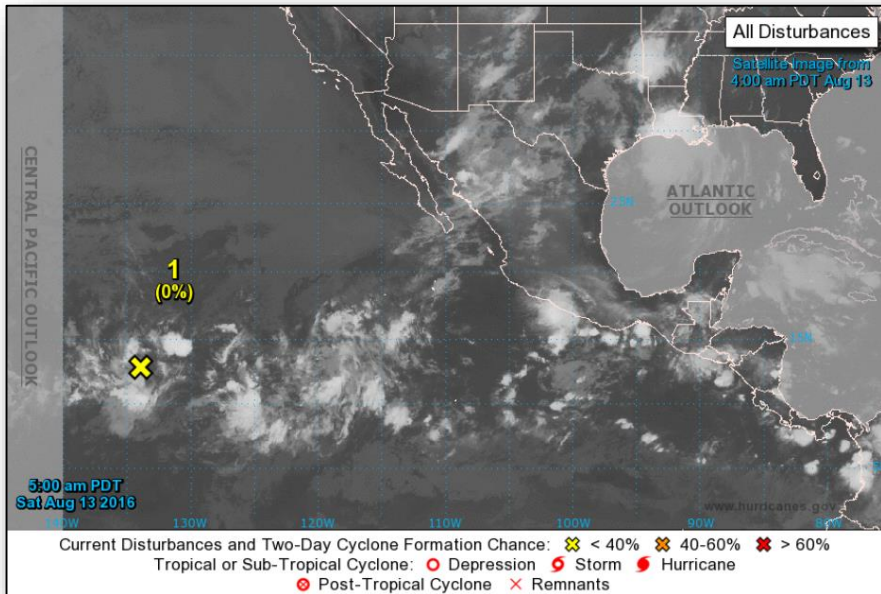
- Region IV RWC remains at Watch/Steady State
- Region VI RWC at Enhanced Watch; LNO deployed to LA EOC; Damage assessment teams on standby
- No requests for FEMA assistance



Tropical Outlook - Atlantic



Tropical Outlook - Eastern Pacific



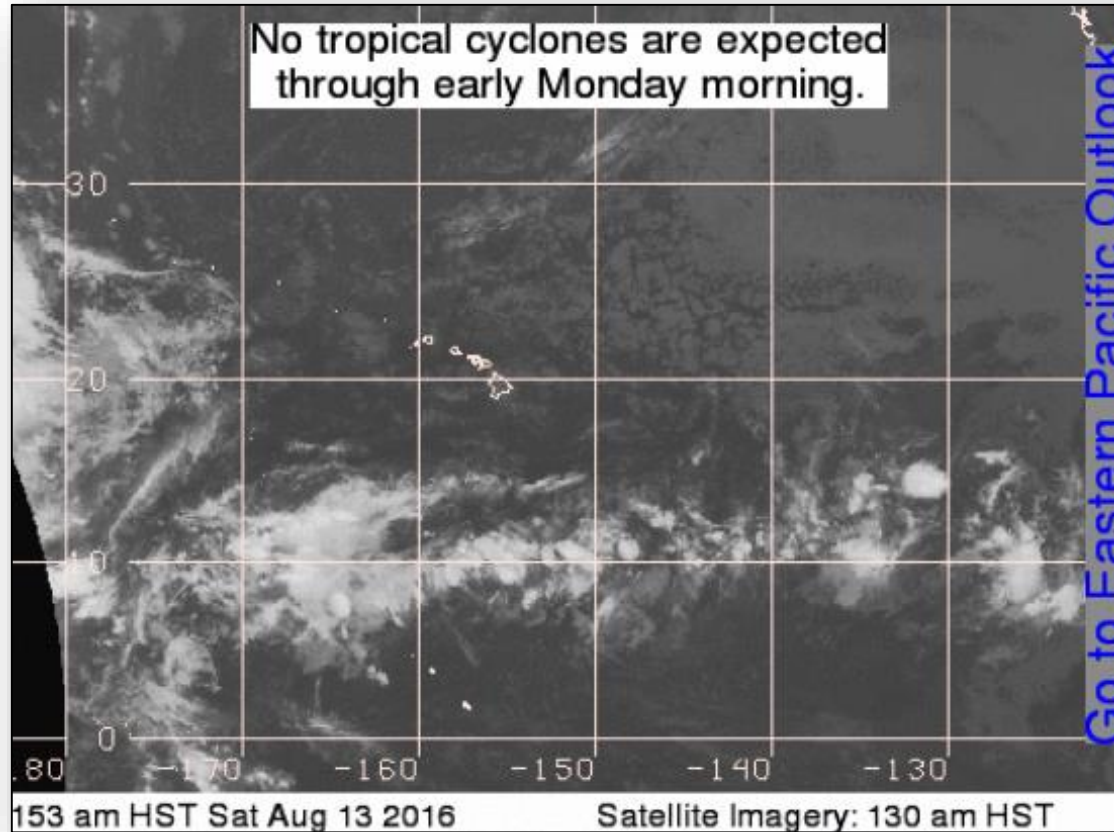
Disturbance 1 (As of 8:00 a.m. EDT)

- Located 1,400 miles ESE of the Hawaiian Islands
- Moving westward
- Further development should be slow to occur
- Formation chance through 48 hours: Low (Near 0%)
- Formation chance through 5 days: Low (10%)

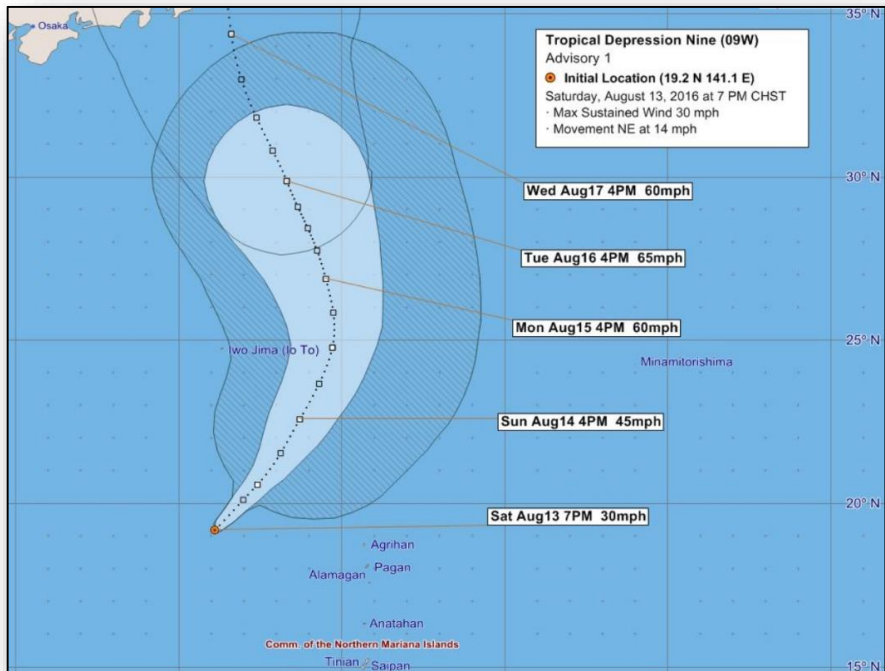
Tropical Outlook - Central Pacific



FEMA



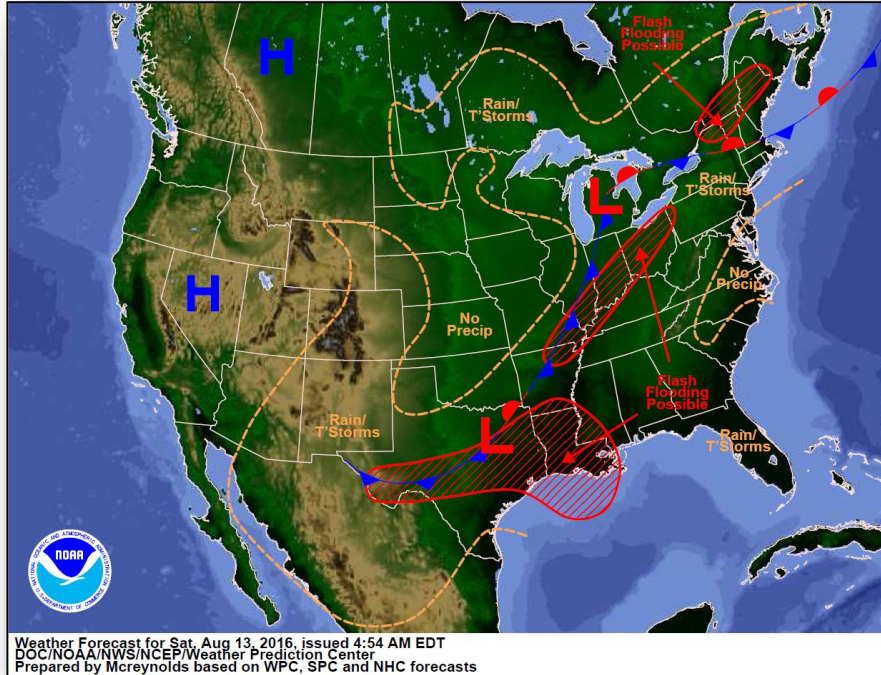
Tropical Outlook –Western Pacific



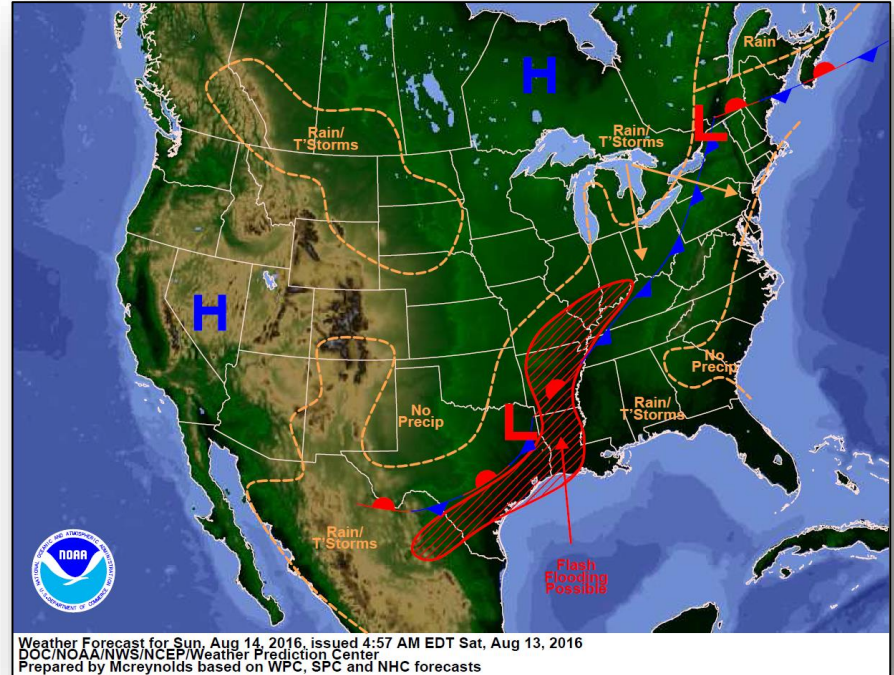
Tropical Depression 09W (Advisory #1 as of 5:00 a.m. EDT)

- Located about 465 miles NNW of Guam
- Sustained winds 30 mph; moving NE at 14 mph
- Anticipated to gradually intensify through Monday; could become a tropical storm Sunday
- No watches/warning in effect for Guam

National Weather Forecast

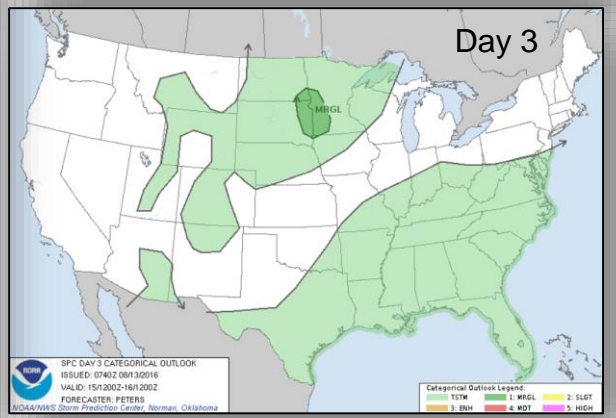
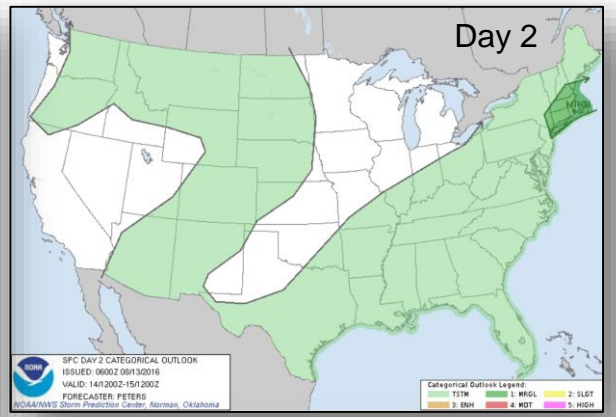
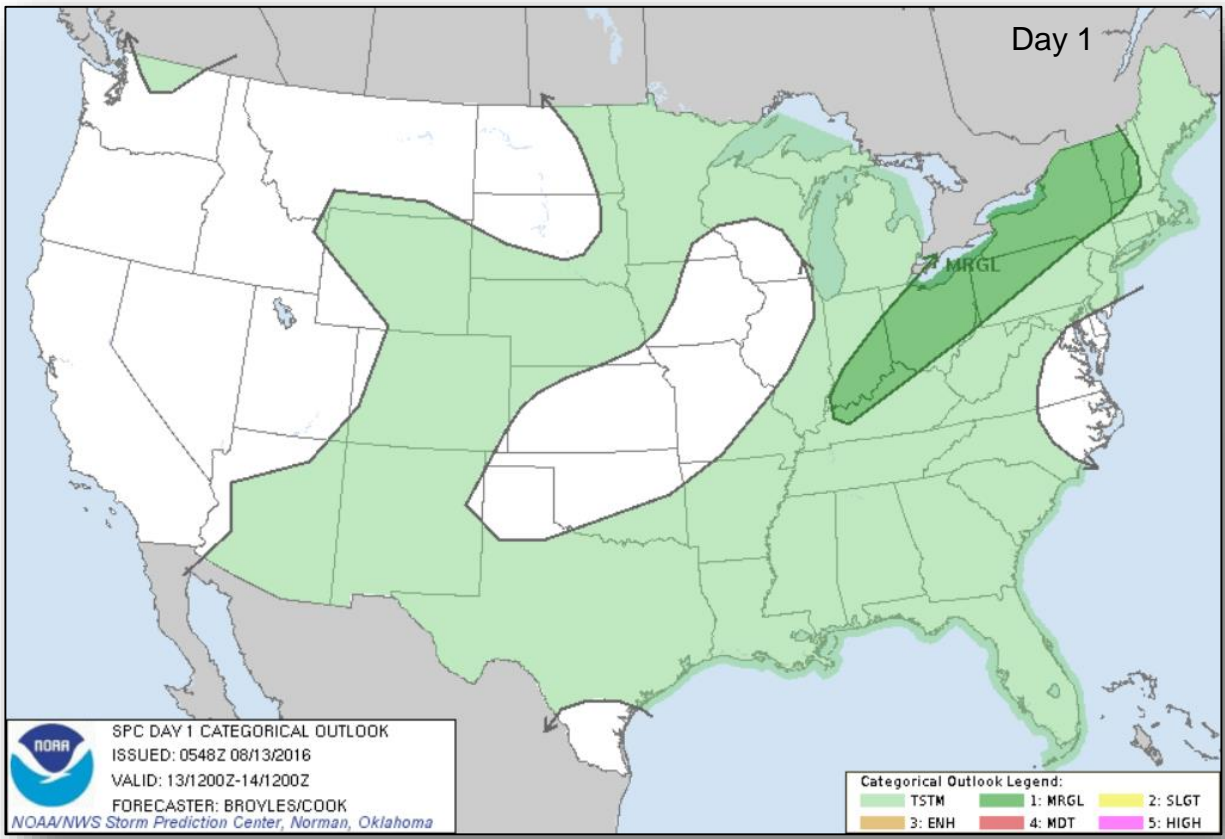


Today



Tomorrow

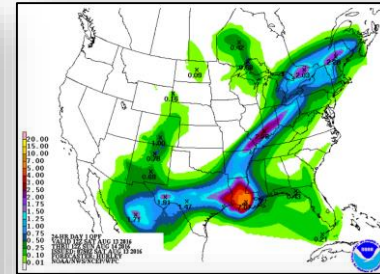
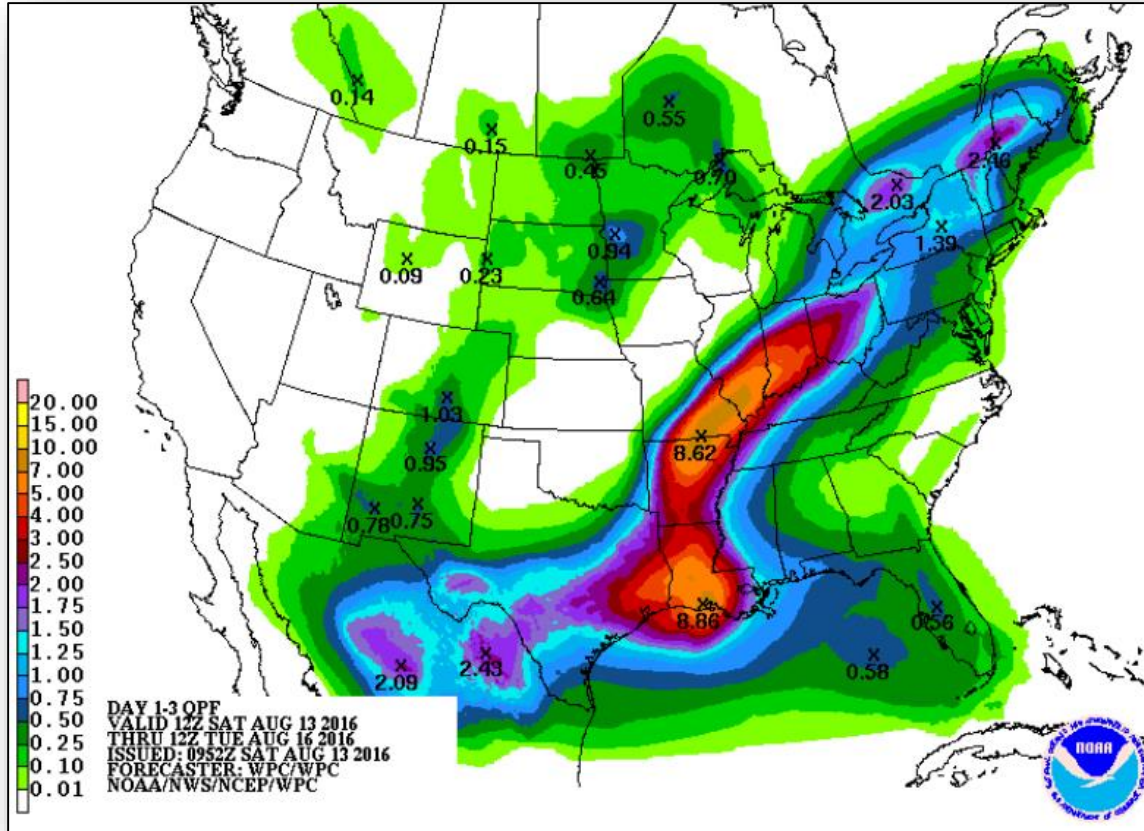
Severe Weather Outlook - Days 1-3



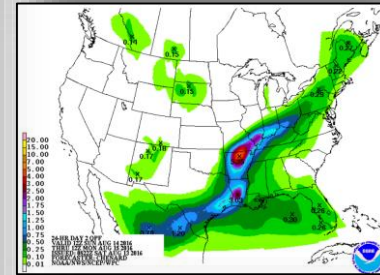
Precipitation Forecast - Days 1-3



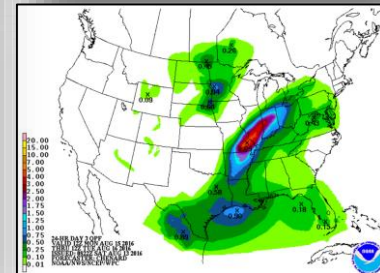
FEMA



Day 1

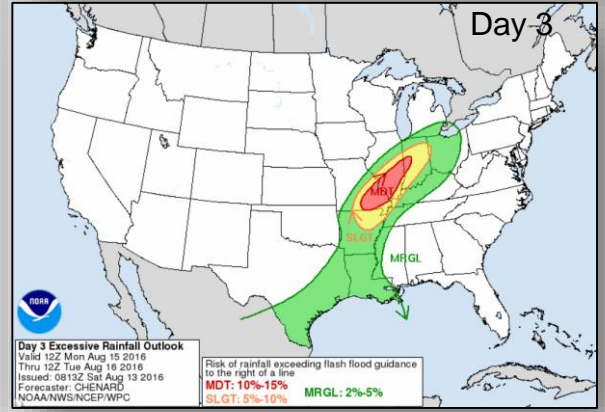
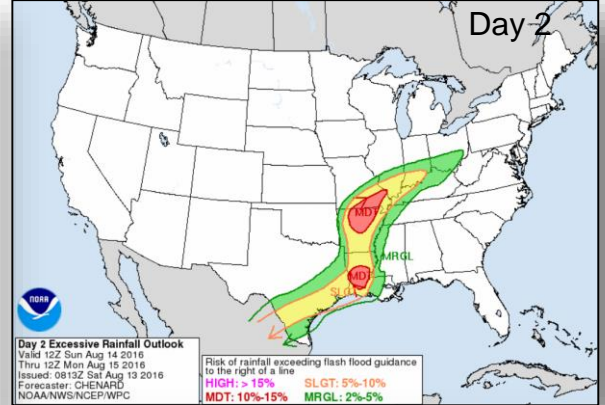
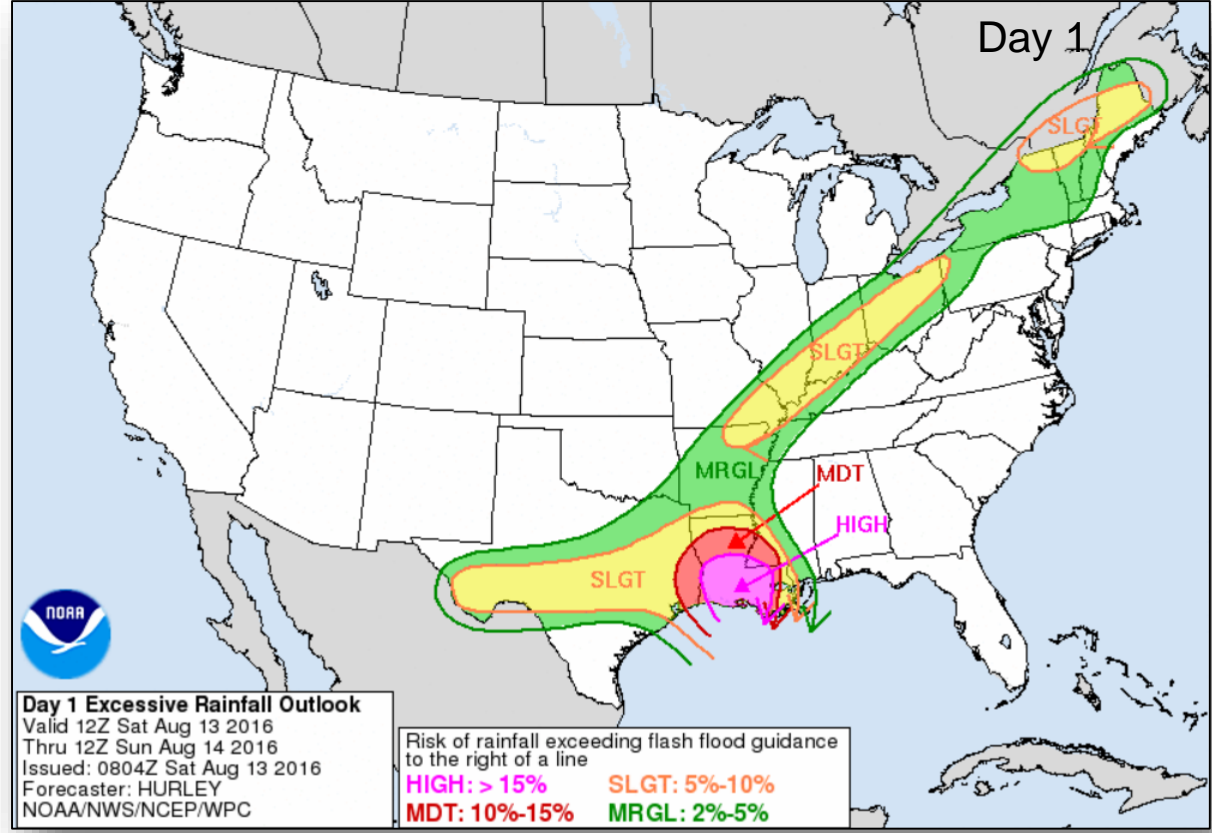


Day 2

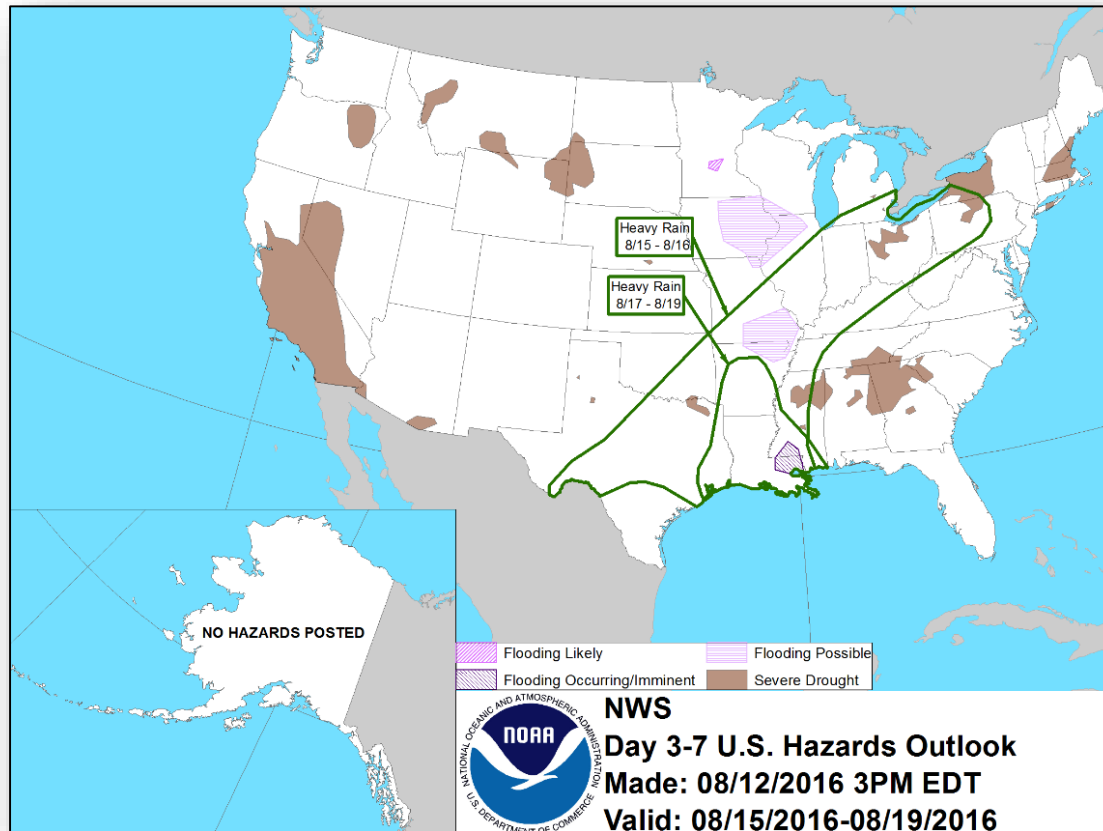


Day 3

Excessive Rainfall Outlook - Days 1-3



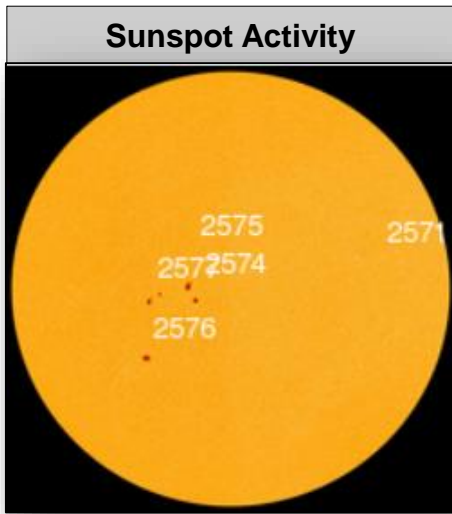
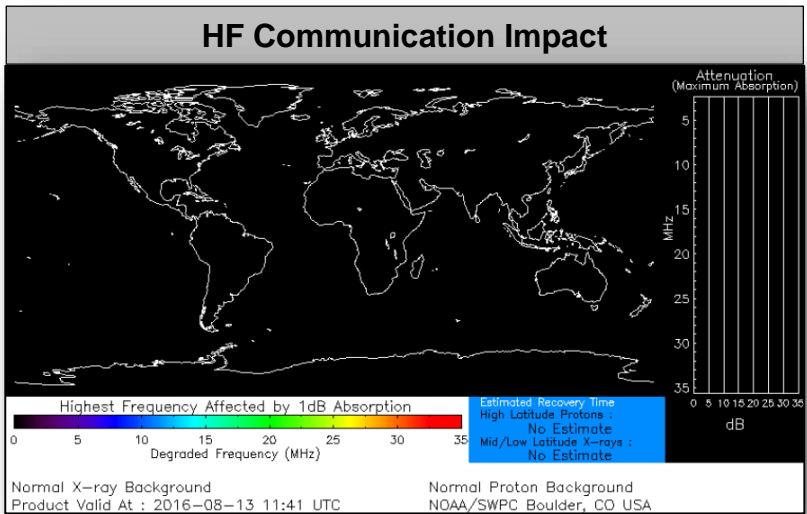
Hazards Outlook - August 15-19





Space Weather

	Past 24 Hours	Current	Next 24 Hours
Space Weather Activity	None	None	None
Geomagnetic Storms	None	None	None
Solar Radiation Storms	None	None	None
Radio Blackouts	None	None	None



Wildfire Summary



Fire Name (County)	FMAG #	Acres burned	% Contained	Evacuations (Residents)	Structures Threatened	Structures Damaged / Destroyed	Fatalities / Injuries
California (2)							
Soberanes Fire (Monterey County)	FEMA-5137-FM-CA	70,615	60% (+5)	Mandatory & Voluntary	410 (400 Homes)	5 (3 Homes) / 68 (57 Homes)	1 / 3
Pilot Fire (FINAL) (San Bernardino County)	FEMA-5144-FM-CA	8,115	80% (+10)	Lifted	5,600 (5,300 Homes)	0 / 0	0 / 1

Joint Preliminary Damage Assessments



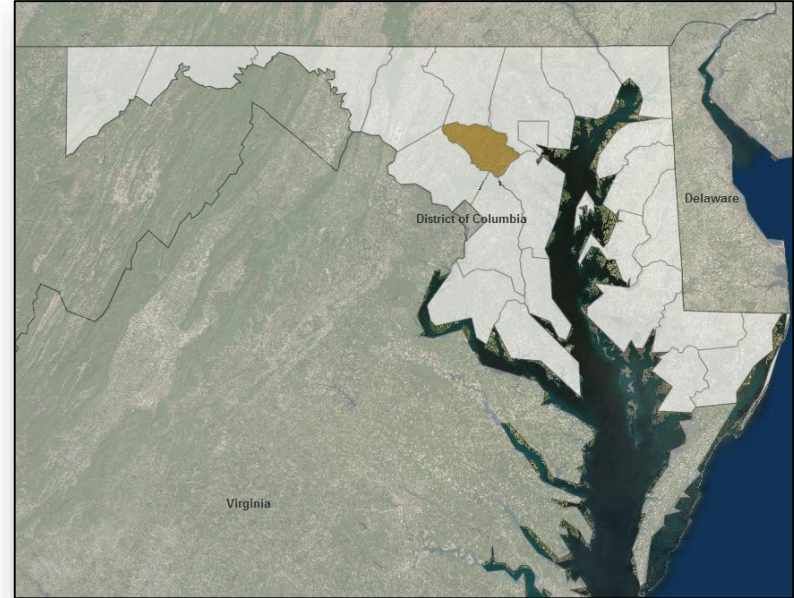
Region	State / Location	Event	IA/PA	Number of Counties		Start - End
				Requested	Complete	
III	MD	Severe Weather & Heavy Rains July 30, 2016	PA	1	0	8/4-TBD
III	WV	Severe Weather & Heavy Rains July 30, 2016	IA	1	1	8/5-8/5
			PA	1	0	8/6-TBD

Major Disaster Declaration Request - Maryland



August 12, 2016

- Request for Major Disaster Declaration for the State of Maryland as a result of severe storms and flooding during the period July 30-31, 2016
- Requesting:
 - Individual & Public Assistance, including Direct Federal Assistance for Howard County
 - Hazard Mitigation statewide

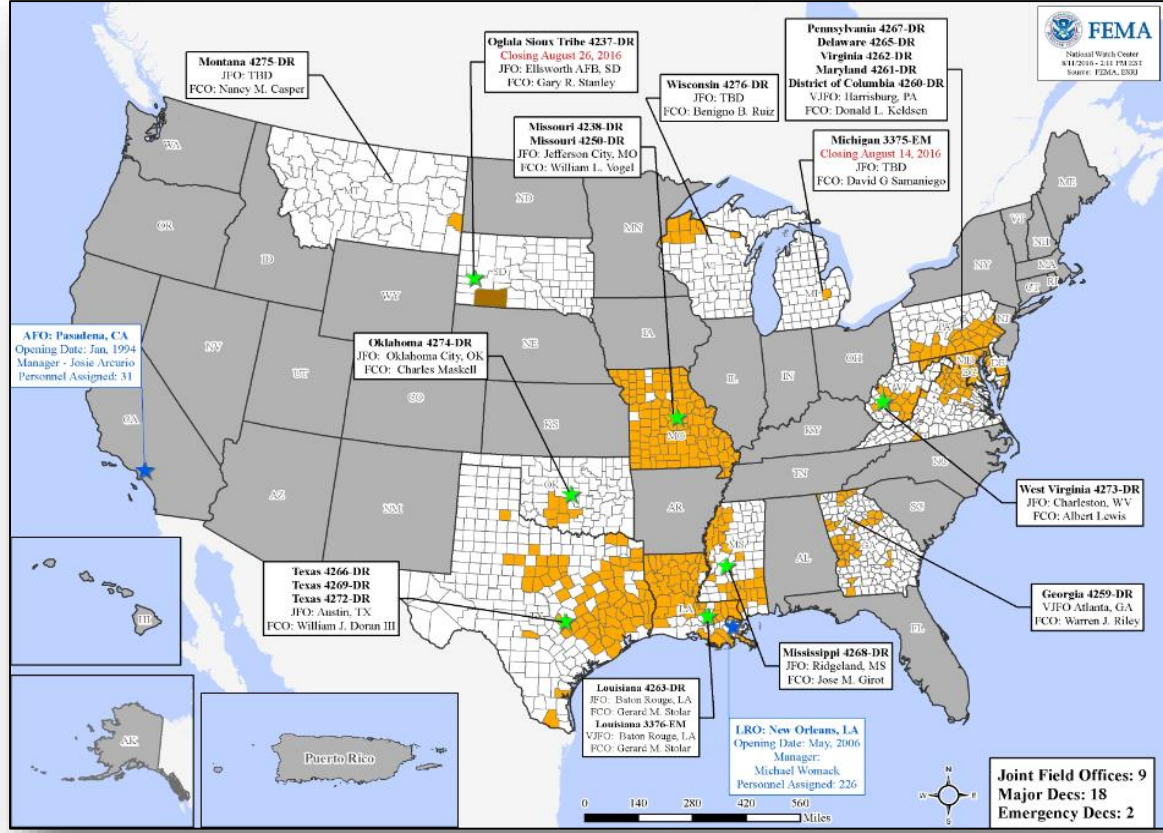


Disaster Requests & Declarations



Declaration Requests in Process		Requests APPROVED (since last report)	Requests DENIED (since last report)
1	Date Requested		1
Fort Peck and Sioux Tribes – DR Severe Storm and Straight-line Winds	August 2, 2016		Denied August 12, 2016
MD – Severe Storms and Flooding	August 12, 2016		

Open Field Offices as of August 13, 2016



FEMA Readiness - Deployable Teams & Assets



Deployable Teams & Assets									
Resource	Status	Total	FMC Available		Partially Available	Not Available	Detailed, Deployed, Activated	Comments	Rating Criterion
FCO		36	13	36%	0	1	22		OFDC Readiness: FCO Green Yellow Red Type 1 3+ 2 1 Type 2 4+ 3 2 Type 3 4 3 2 FDRC 3 2 1
FDRC		10	4	40%	0	1	5		
US&R		28	27	96%	1	0	0	NJ-TF1: Partially Mission Capable	
National IMAT		3	3	100%	0	0	0	East 2: Primary (On Call)	<ul style="list-style-type: none"> Green: 3 available Yellow: 1-2 available Red: 0 avail (<i>Individual N-IMAT red if 50% of Section Chiefs and/or Team Leader is unavailable for deployment.</i>)
Regional IMAT		13	10	77%	0	1	2	Region II IMAT A: Deploying 8/14-8/20 (for Ex in Caribbean) <u>Deployed:</u> Region I: Red / Reconstituting (FMC August 15) Region III: Deployed to WV (4273-WV) Region VIII: Deployed to MT & CO (4275-MT)	<ul style="list-style-type: none"> Green: >6 teams available Yellow: 4 - 6 teams available Red: < 4 teams available R-IMAT also red if TL Ops/Log Chief is unavailable & has no qualified replacement
MERS Teams		18	17	94%	0	0	1	<u>Deployed:</u> Maynard: Deployed to Frederick, MD	<ul style="list-style-type: none"> Green = >66% available Yellow = 33% to 66% available Red = <33% available

FEMA Readiness - National & Regional Teams



National/Regional Teams									
Resource	Status	Total	FMC Available		Partially Available	Not Available	Status	Comments	Rating Criterion
NWC		5	5	100%	0	0	Not Activated		<ul style="list-style-type: none"> • Green = FMC • Yellow = PMC • Red = NMC
NRCC		2	2	100%	0	0	Not Activated		
HLT		1	1	100%	0	0	Activated		
DEST							Not Activated		
RRCCs		10	10	100%	0	0	Not Activated		
RWCs/MOCs		10	9	90%	0	0	Activated	Region VI: Enhanced Watch (flooding in LA)	



FEMA

FEMA's mission is to support our citizens and first responders to ensure that as a nation we work together to build, sustain, and improve our capability to prepare for, protect against, respond to, recover from, and mitigate all hazards.