

The Disaster Center is dedicated to the idea that disaster mitigation is cost effective and individuals pursuing their own interest are the greatest potential force for disaster reduction.

Please consider making a small donation to the Disaster Center



When disaster mitigation is cost effective, we are on the road to bringing disasters to an end.



FEMA

Daily Operations Briefing

Friday, August 12, 2016

8:30 a.m. EDT

Significant Activity - August 11-12



Significant Events: None

Tropical Activity:

- Atlantic – No tropical cyclones expected next 48 hours
- Eastern Pacific – Disturbance 1 (Low 0%)
- Central Pacific – No tropical cyclones expected through early Sunday morning
- Western Pacific – Invest 93W

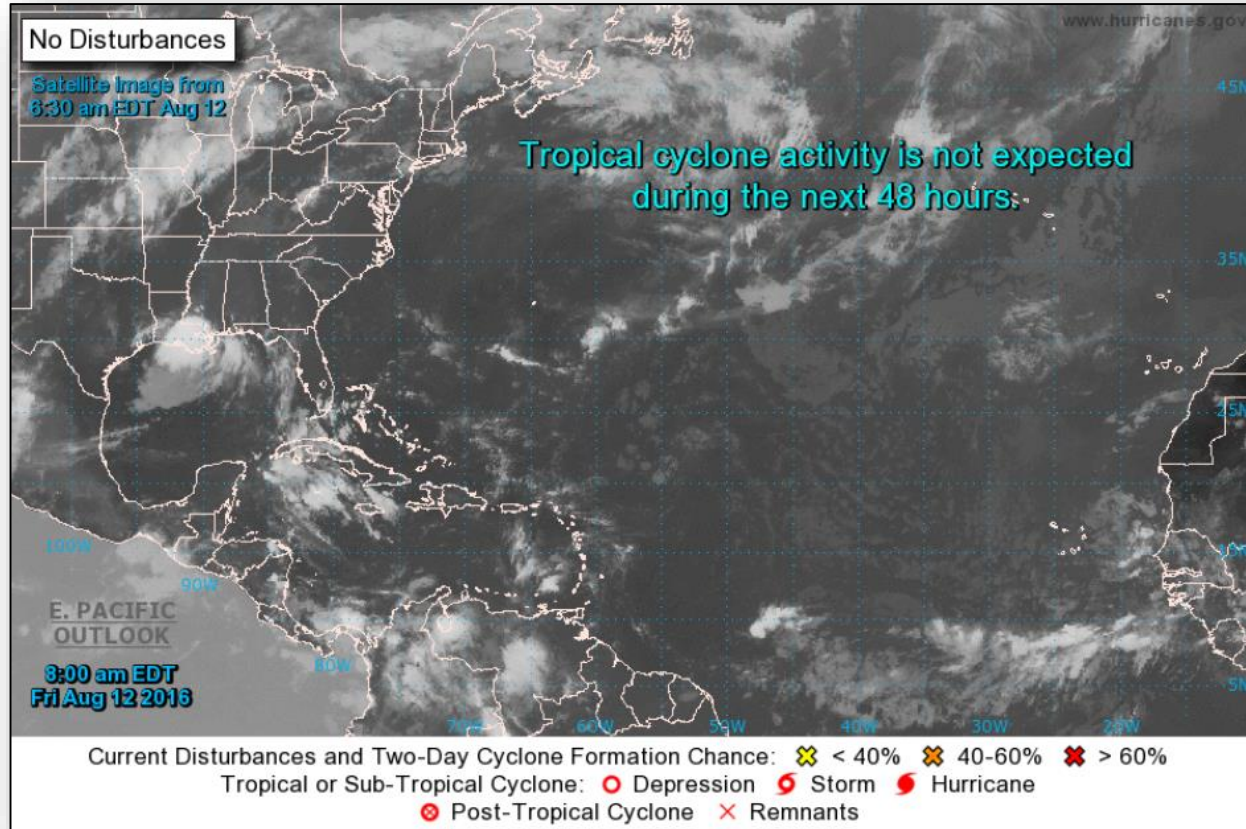
Significant Weather:

- Flash Flooding – Lower Mississippi Valley, Ohio Valley to Great Lakes
- Rain & Thunderstorms – Northern Rockies & Southwest, Great Plains to Northeast & Southeast
- Excessive Heat Advisories / Warnings – Southern Plains & Lower Mississippi Valley and Mid-Atlantic to New England
- Critical/Elevated Fire Weather Outlook – None
- Red Flag Warnings – None
- Space Weather – No space weather observed in past 24 hours; no space weather predicted for the next 24 hours

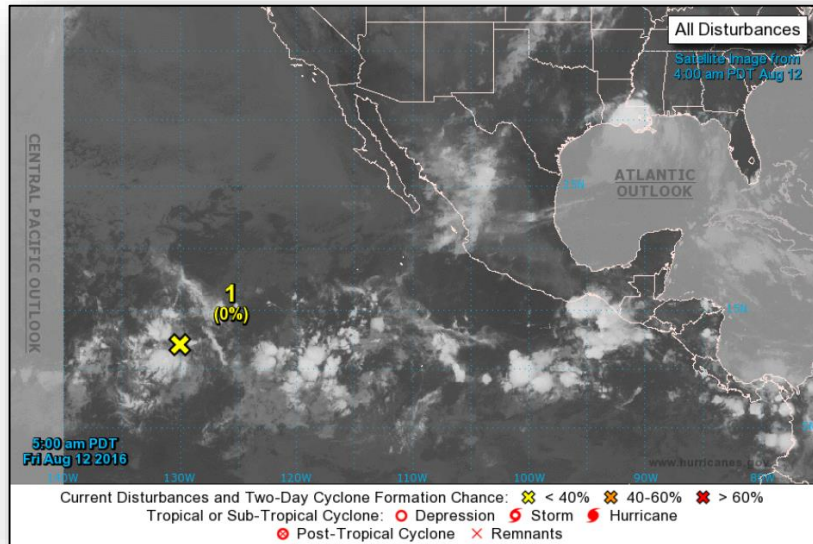
Earthquake Activity: No significant activity

Declaration Activity: None

Tropical Outlook - Atlantic



Tropical Outlook - Eastern Pacific



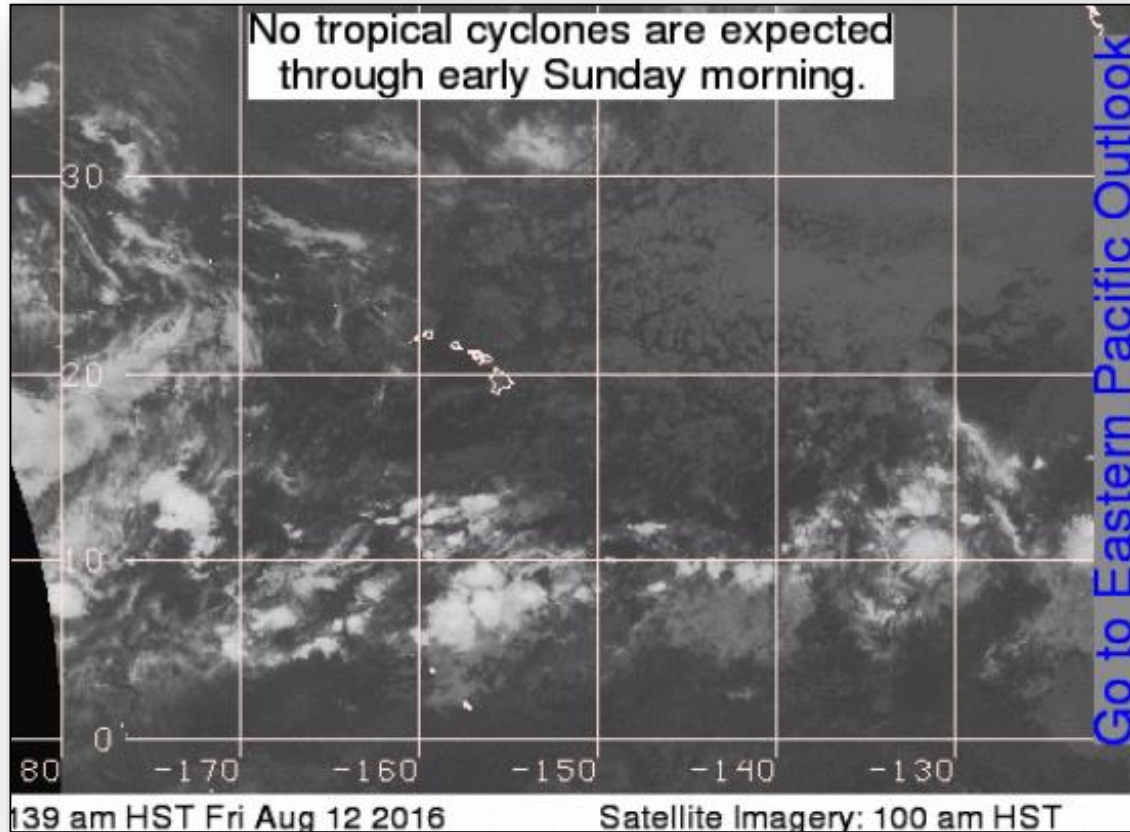
Disturbance 1 (As of 8:00 a.m. EDT)

- Located 1,100 miles SW of the southern tip of the Baja California Peninsula, Mexico
- Moving westward
- Gradual development is possible by early next week
- Formation chance through 48 hours: Low (Near 0%)
- Formation chance through 5 days: Low (20%)

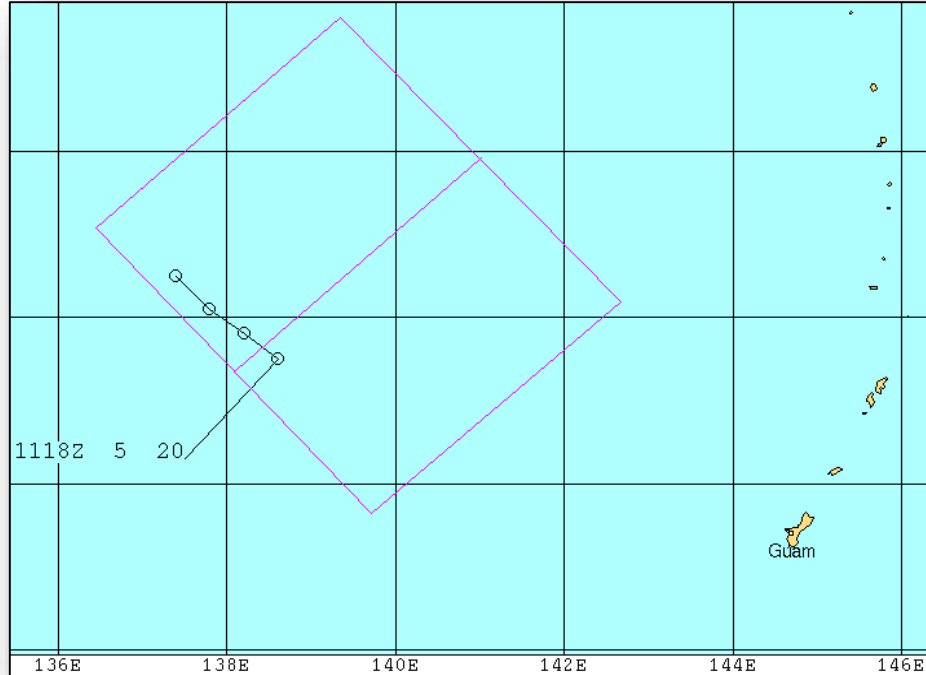
Tropical Outlook - Central Pacific



FEMA



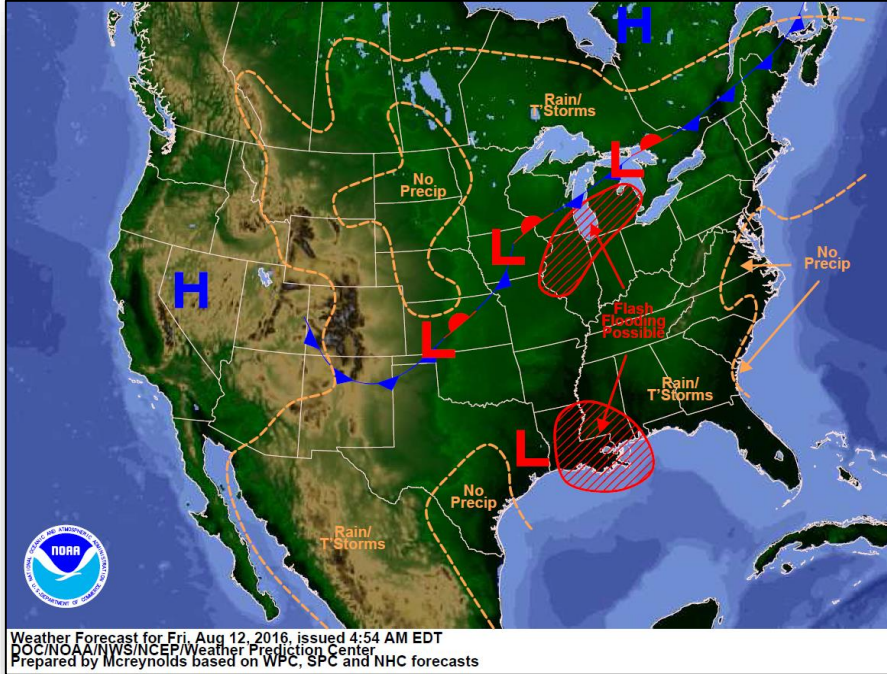
Tropical Outlook –Western Pacific



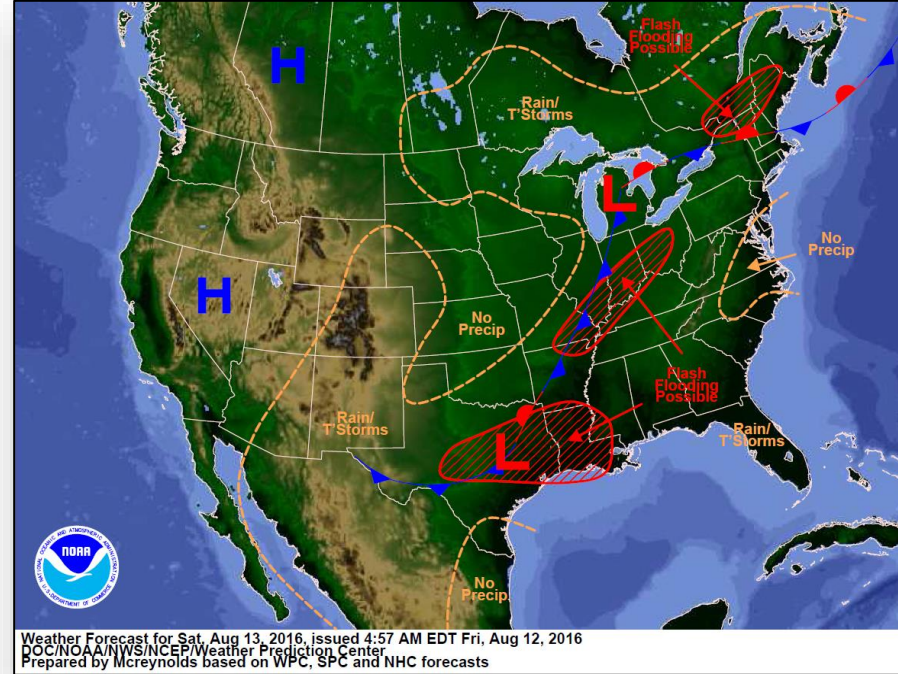
Invest 93W (As of 2:00 a.m. EDT)

- Located about 435 miles WNW of Guam
- Moving SE at 6 mph
- Maximum sustained winds of 20-26 mph
- Extended period of heavy rain forecast, up to 15" over CNMI
- Potential for development of a significant tropical cyclone within the next 24 hours is high

National Weather Forecast

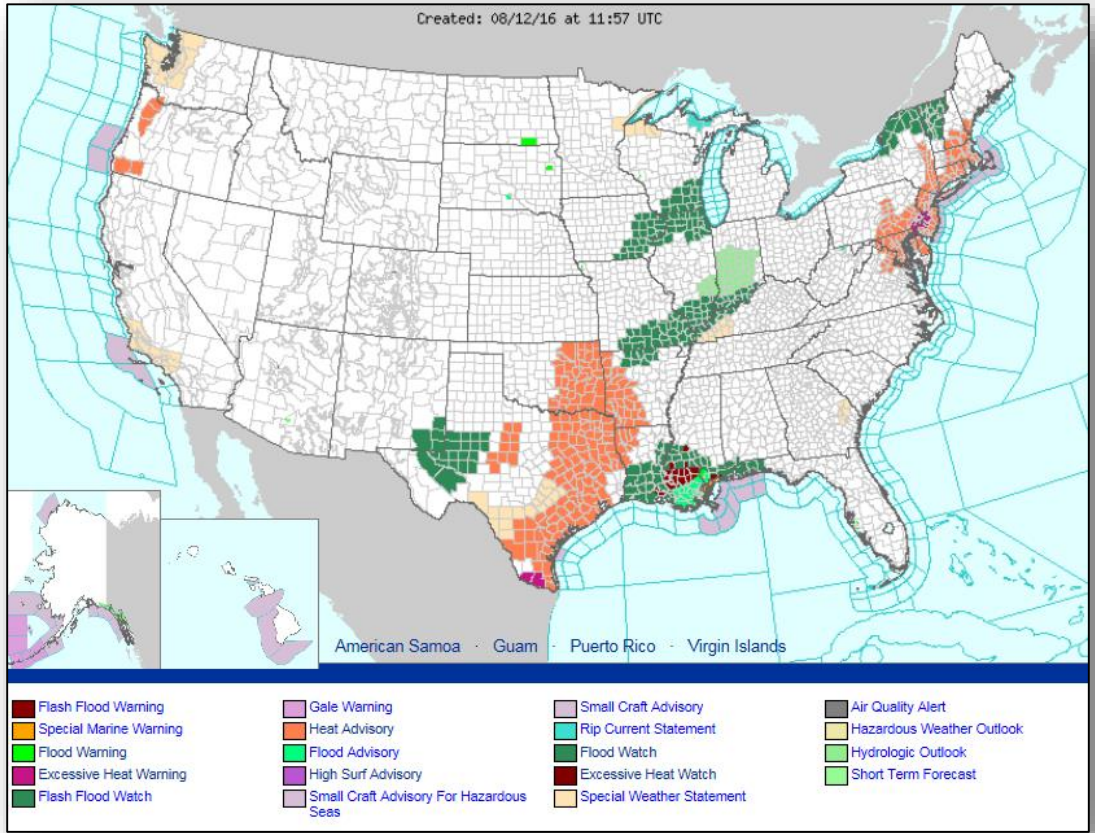


Today



Tomorrow

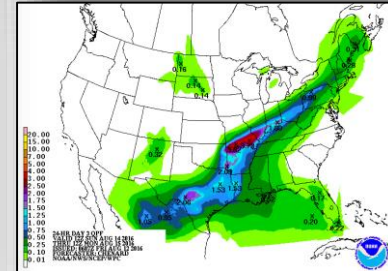
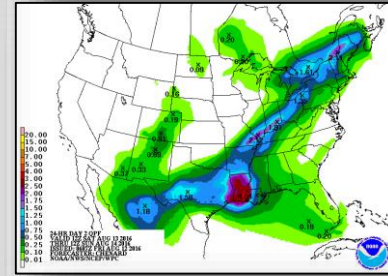
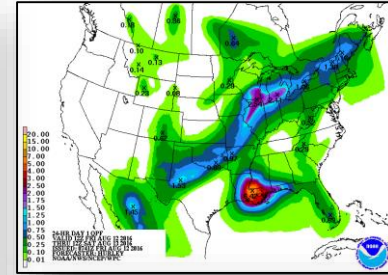
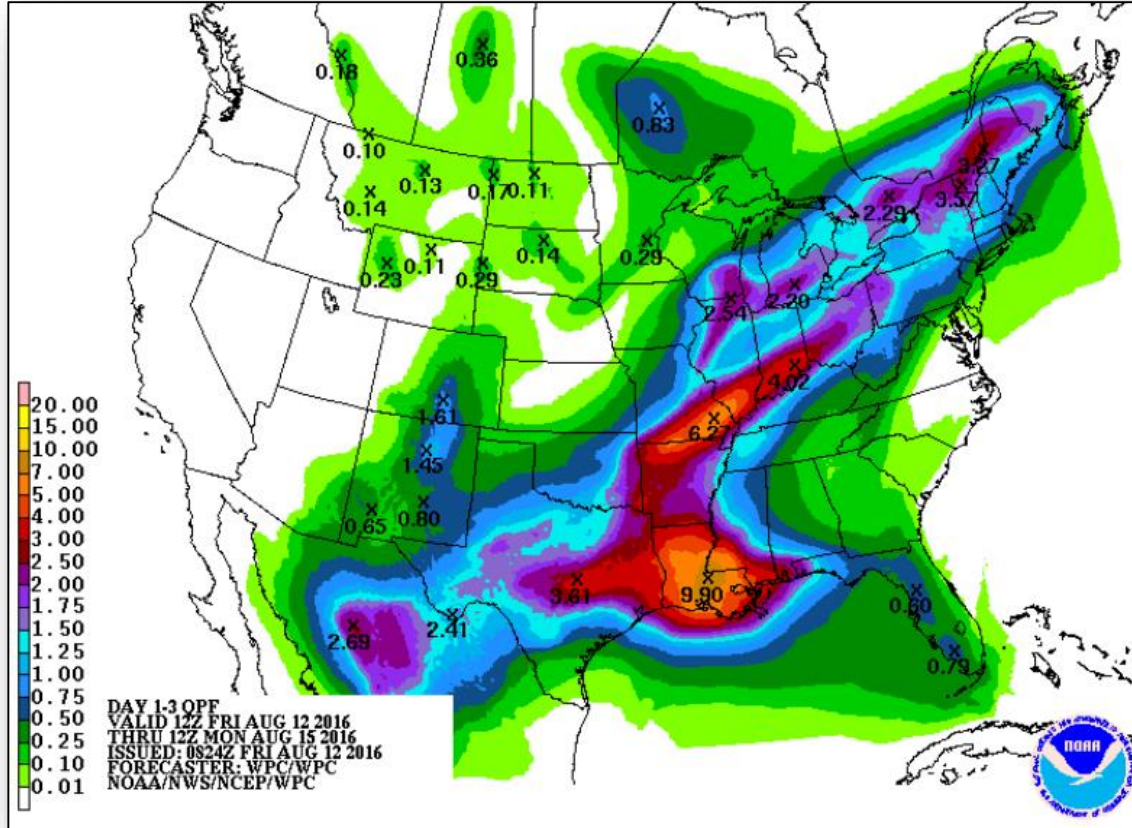
Active Watches & Warnings



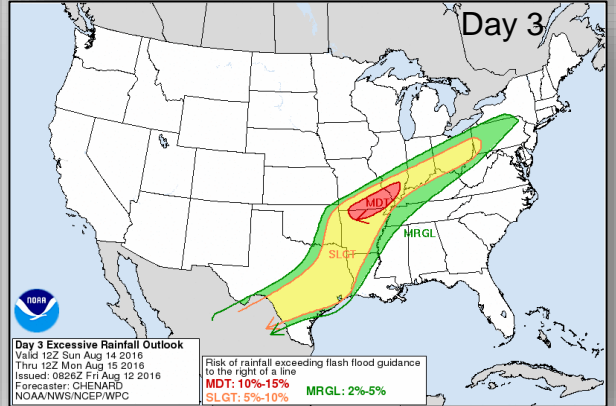
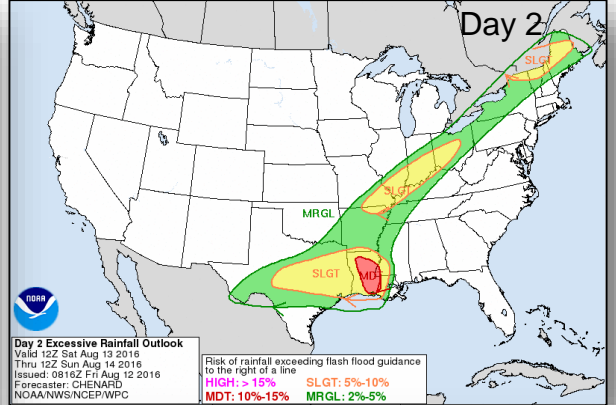
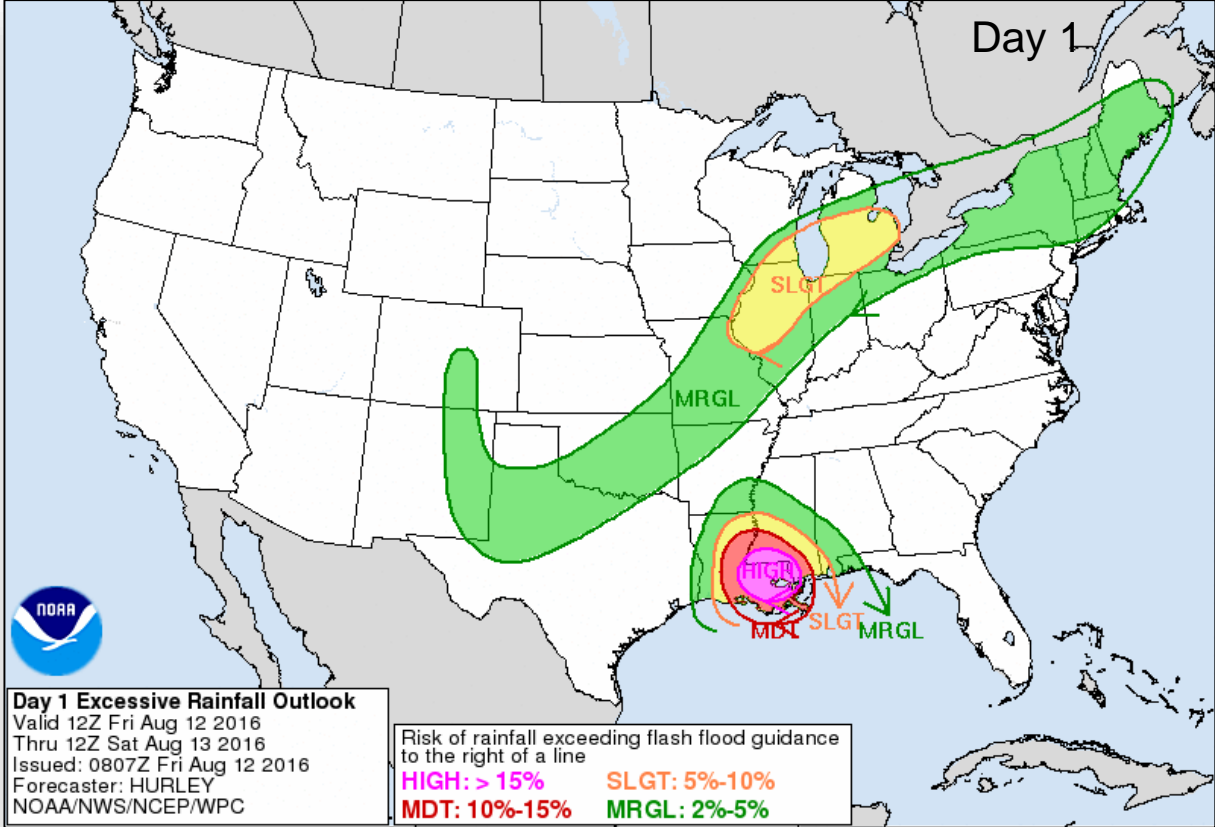
Precipitation Forecast - Days 1-3



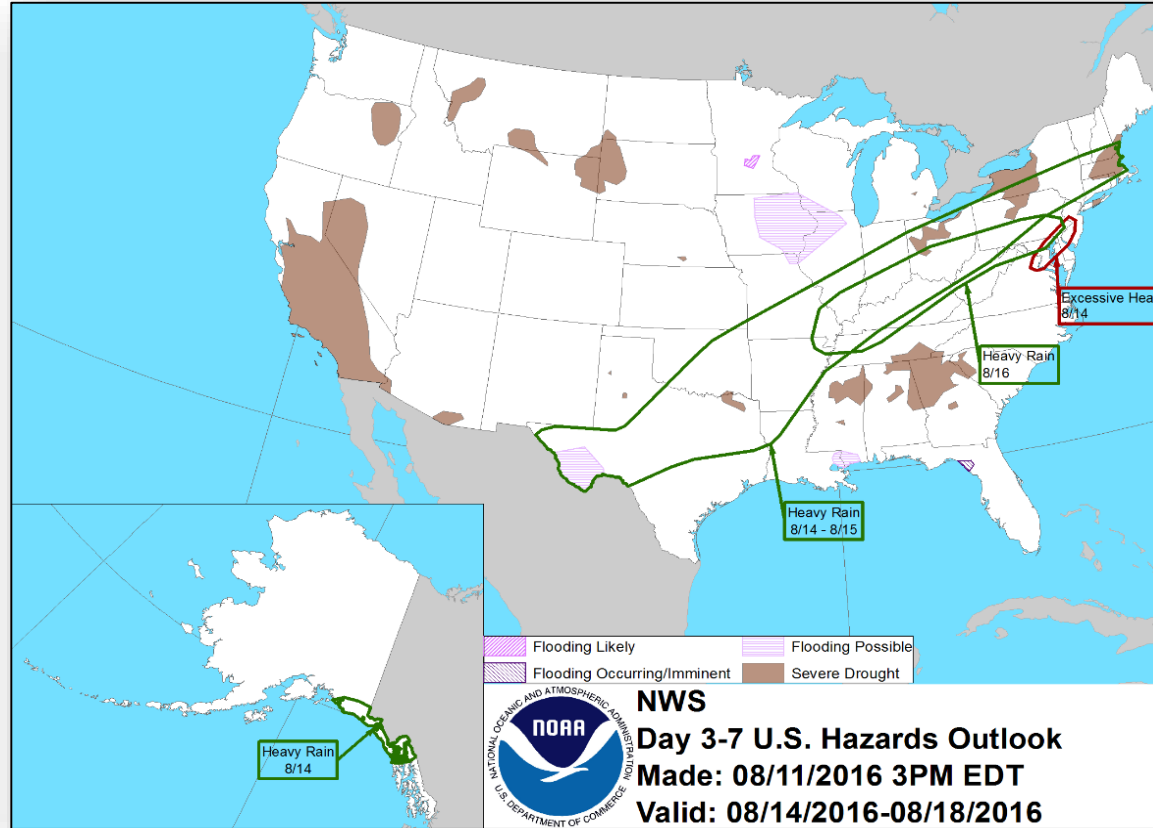
FEMA



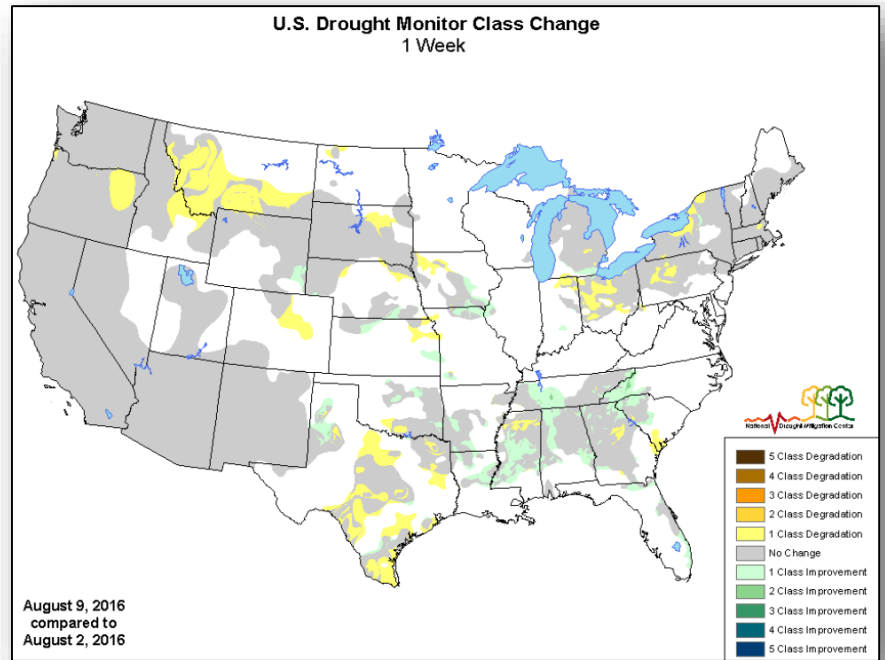
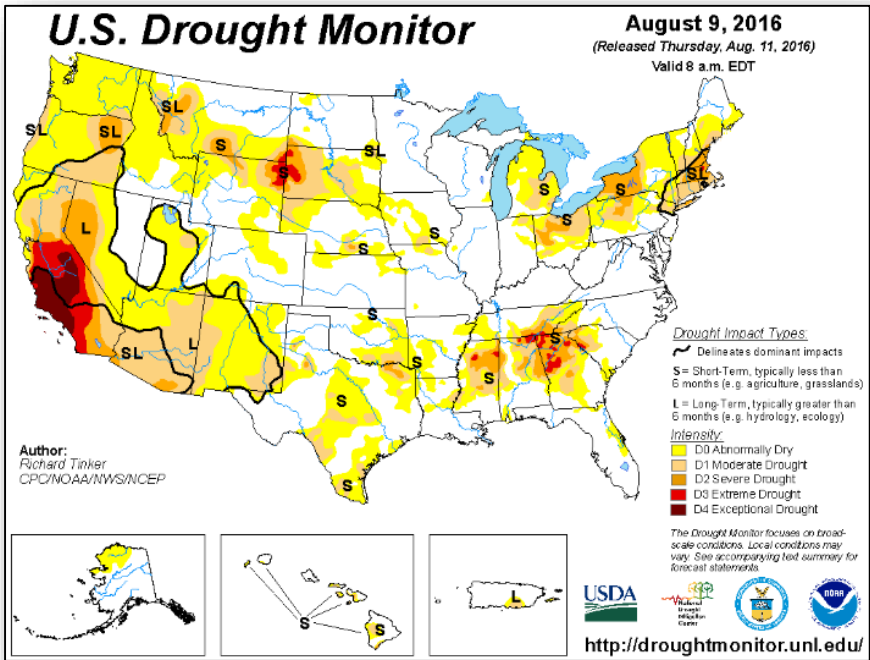
Excessive Rainfall Outlook - Days 1-3



Hazards Outlook - August 14 -18



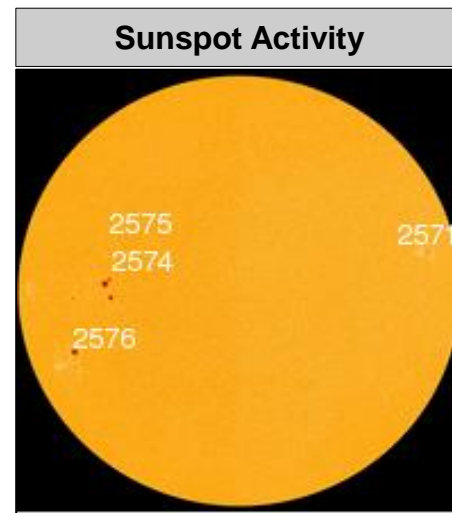
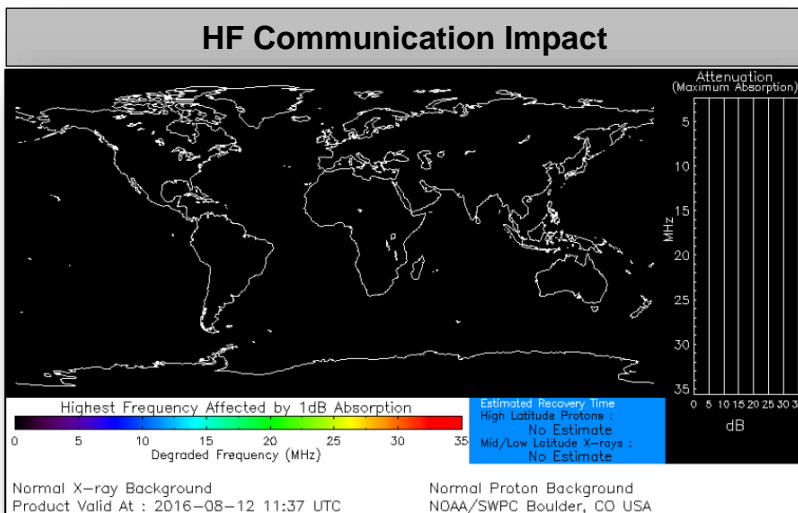
U.S. Drought Monitor





Space Weather

	Past 24 Hours	Current	Next 24 Hours
Space Weather Activity	None	None	None
Geomagnetic Storms	None	None	None
Solar Radiation Storms	None	None	None
Radio Blackouts	None	None	None



Wildfire Summary



Fire Name (County)	FMAG #	Acres burned	% Contained	Evacuations (Residents)	Structures Threatened	Structures Damaged / Destroyed	Fatalities / Injuries
California (2)							
Soberanes Fire (Monterey County)	FEMA-5137-FM-CA	69,837 (+1,139)	55% (+5)	Mandatory & Voluntary	410 (400 Homes)	5 (3 Homes) / 68 (57 Homes)	1 / 3
Pilot Fire (San Bernardino County)	FEMA-5144-FM-CA	7,899 (+38)	70% (+6)	Mandatory & Voluntary	5,600 (5,300 Homes)	0 / 0	0 / 1

Joint Preliminary Damage Assessments



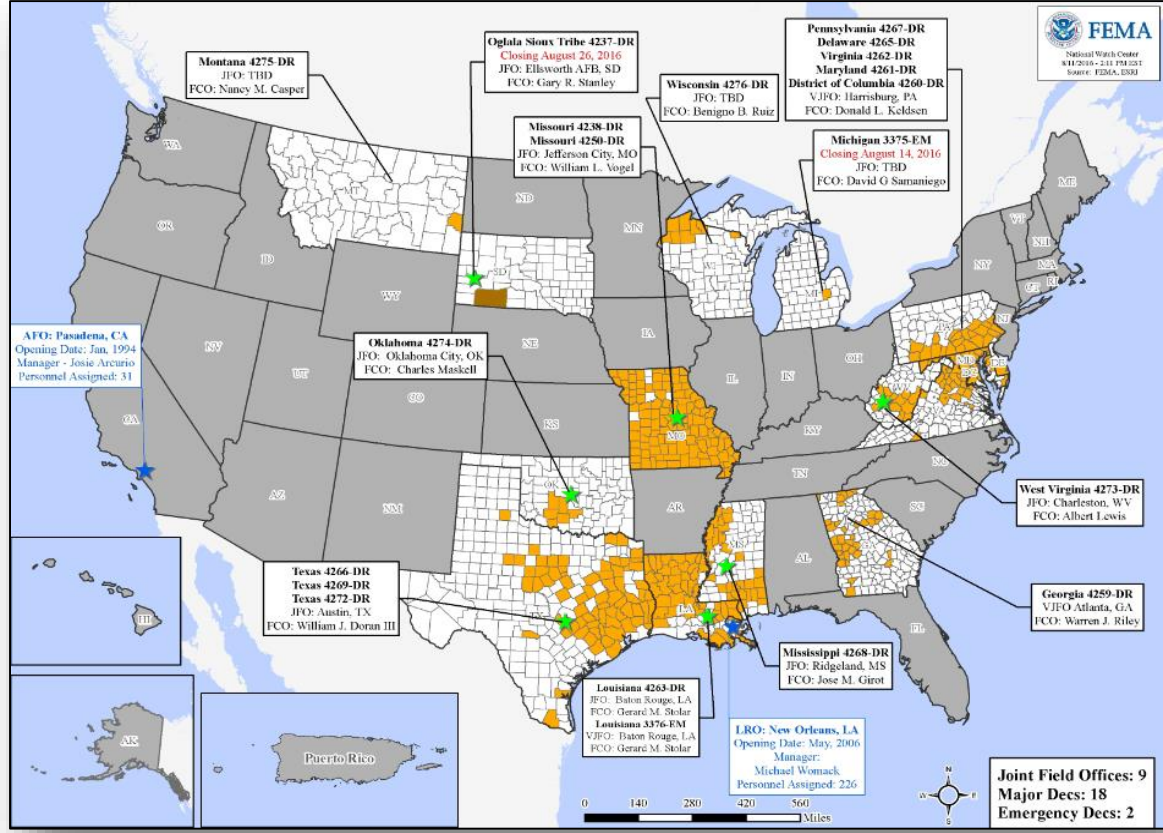
Region	State / Location	Event	IA/PA	Number of Counties		Start - End
				Requested	Complete	
III	MD	Severe Weather & Heavy Rains July 30, 2016	PA	1	0	8/4-TBD
III	WV	Severe Weather & Heavy Rains July 30, 2016	IA	1	1	8/5-8/5
			PA	1	0	8/6-TBD

Disaster Requests & Declarations



Declaration Requests in Process		Requests APPROVED (since last report)	Requests DENIED (since last report)
1	Date Requested		0
Fort Peck and Sioux Tribes – DR Severe Storm and Straight-line Winds	August 2, 2016		

Open Field Offices as of August 12, 2016



FEMA Readiness - Deployable Teams & Assets



Deployable Teams & Assets									
Resource	Status	Total	FMC Available		Partially Available	Not Available	Detailed, Deployed, Activated	Comments	Rating Criterion
FCO		36	13	36%	0	1	22		OFDC Readiness: FCO Green Yellow Red Type 1 3+ 2 1 Type 2 4+ 3 2 Type 3 4 3 2 FDRC 3 2 1
FDRC		10	4	40%	0	1	5		
US&R		28	27	96%	1	0	0	NJ-TF1: Partially Mission Capable	<ul style="list-style-type: none"> Green = Available/FMC Yellow = Available/PMC Red = Out-of-Service Blue = Assigned/Deployed
National IMAT		3	3	100%	0	0	0	East 2: Primary (On Call)	<ul style="list-style-type: none"> Green: 3 available Yellow: 1-2 available Red: 0 avail (<i>Individual N-IMAT red if 50% of Section Chiefs and/or Team Leader is unavailable for deployment.</i>)
Regional IMAT		13	10	77%	0	1	2	Deployed: Region I: Red / Reconstituting (FMC August 15) Region III: Deployed to WV (4273-WV) Region VIII: Deployed to MT & CO (4275-MT)	<ul style="list-style-type: none"> Green: >6 teams available Yellow: 4 - 6 teams available Red: < 4 teams available <i>R-IMAT also red if TL Ops/Log Chief is unavailable & has no qualified replacement</i>
MERS Teams		18	17	94%	0	0	1	Deployed: Maynard: Deployed to Frederick, MD	<ul style="list-style-type: none"> Green = >66% available Yellow = 33% to 66% available Red = <33% available

FEMA Readiness - National & Regional Teams



National/Regional Teams									
Resource	Status	Total	FMC Available		Partially Available	Not Available	Status	Comments	Rating Criterion
NWC		5	5	100%	0	0	Not Activated		<ul style="list-style-type: none"> • Green = FMC • Yellow = PMC • Red = NMC
NRCC		2	2	100%	0	0	Not Activated		
HLT		1	1	100%	0	0	Activated		
DEST							Not Activated		
RRCCs		10	10	100%	0	0	Not Activated		
RWCs/MOCs		10	10	100%	0	0	Not Activated		



FEMA

FEMA's mission is to support our citizens and first responders to ensure that as a nation we work together to build, sustain, and improve our capability to prepare for, protect against, respond to, recover from, and mitigate all hazards.