

The Disaster Center is dedicated to the idea that disaster mitigation is cost effective and individuals pursuing their own interest are the greatest potential force for disaster reduction.

Please consider making a small donation to the Disaster Center



When disaster mitigation is cost effective, we are on the road to bringing disasters to an end.



FEMA

Daily Operations Briefing

Tuesday, August 9, 2016

8:30 a.m. EDT

Significant Activity - August 8 - 9



Significant Events: None

Tropical Activity:

- Atlantic –Tropical cyclone activity is not expected during the next 48 hours
- Eastern Pacific – Tropical Depression Javier
- Central Pacific – No tropical cyclones are expected through Wednesday evening
- Western Pacific – No activity threatening U.S. territories

Significant Weather:

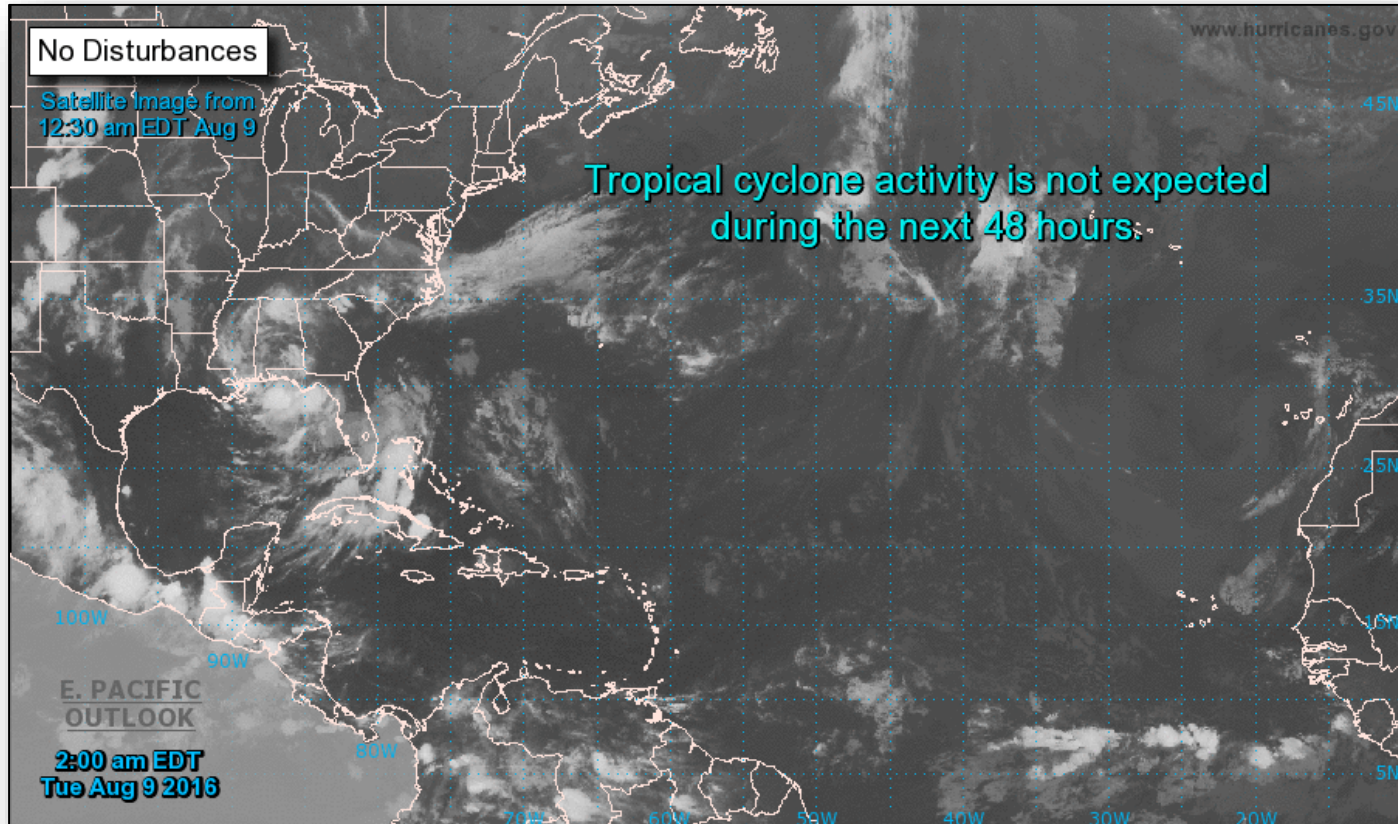
- Heavy Rainfall/Flash Flooding – Southwest, Northern Plains, Ohio Valley and Florida Big Bend
- Severe thunderstorms – Northern Plains
- Rain & thunderstorms – from the Pacific Northwest across the Plains into the Southeastern U.S and Northeast
- Critical/Elevated Fire Weather areas – ID, UT, NV, WY & MT
- Red Flag Warnings – WY, ID, MT & UT
- Space Weather – No space weather observed in past 24 hours; No space weather predicted for the next 24 hours

Earthquake Activity: No significant activity

Declaration Activity:

- FMAG was approved for the Pilot Fire in California

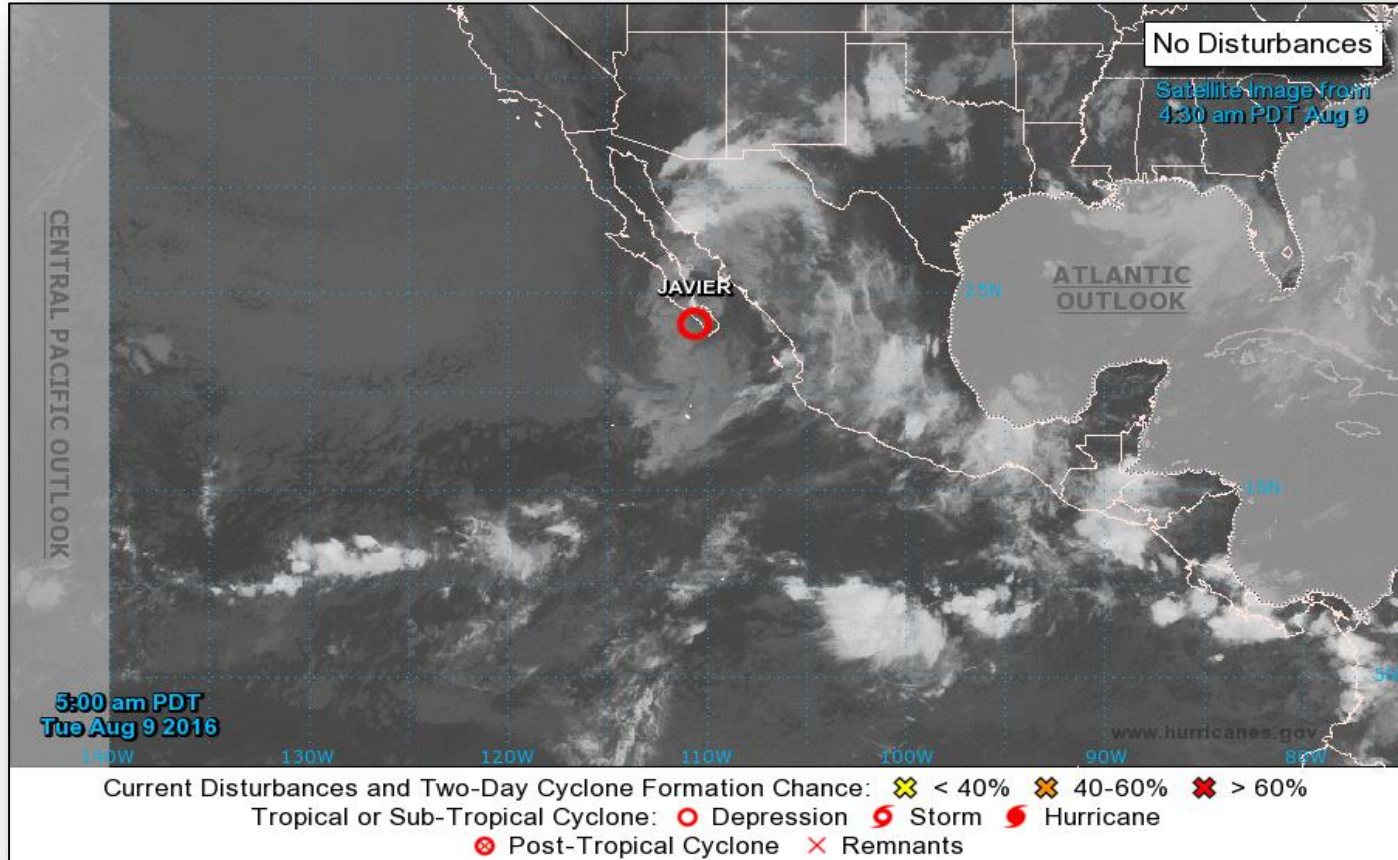
Tropical Outlook - Atlantic



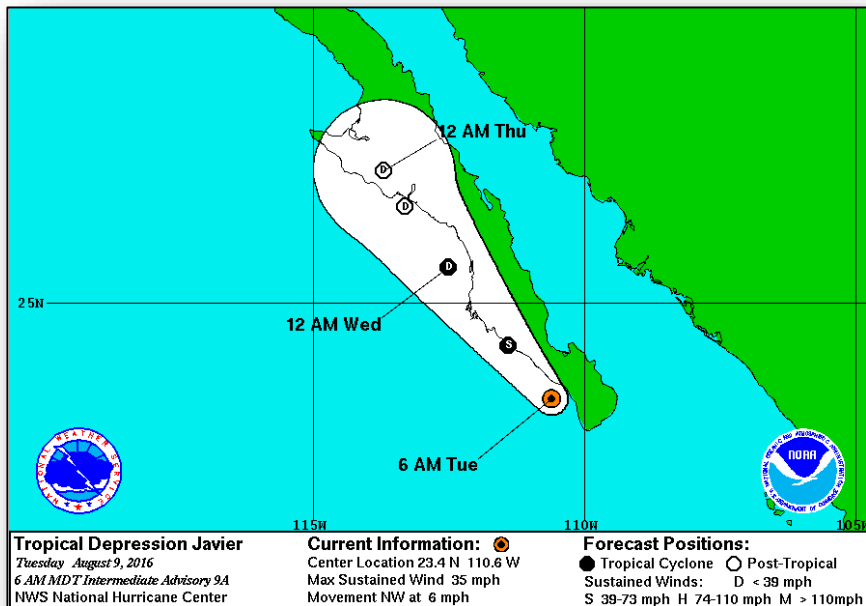
Tropical Outlook - Eastern Pacific



FEMA



Tropical Outlook - Eastern Pacific



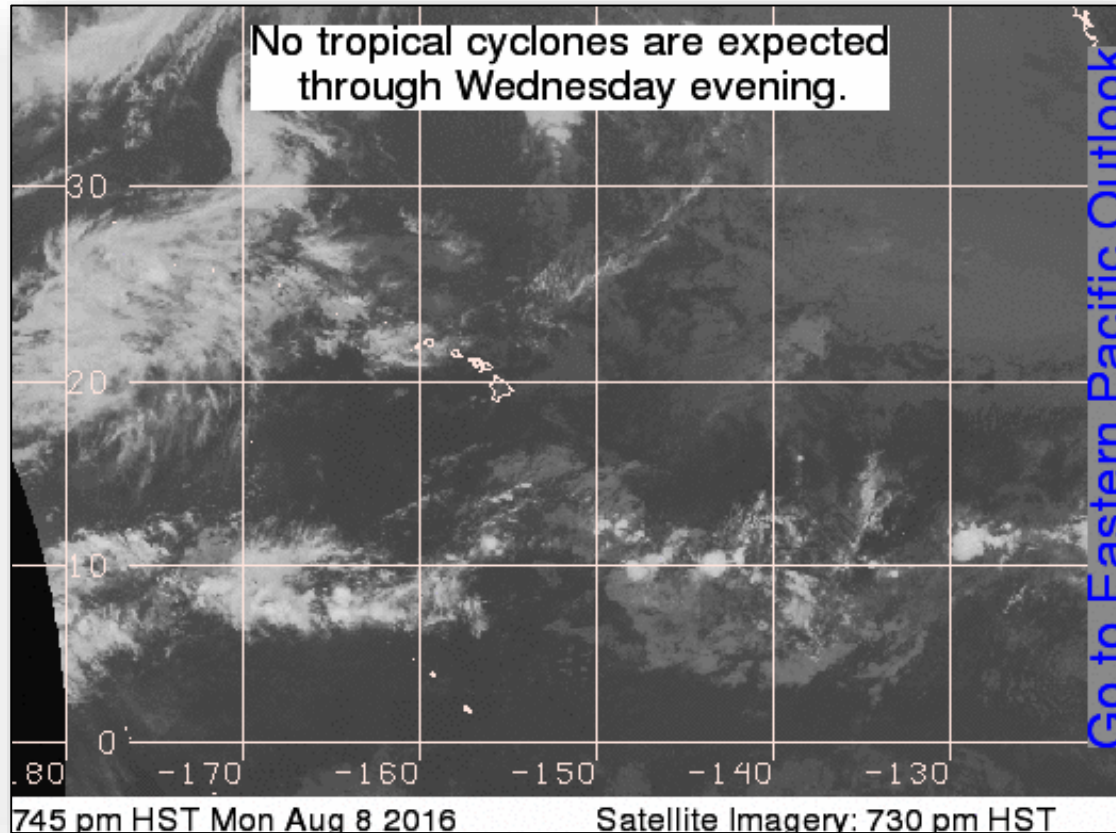
Tropical Depression Javier (Advisory #9A as of 5:00 a.m. EDT)

- Located 50 miles SSW of Cabo San Lucas Mexico
- Moving NW at 6 mph; this motion expected to continue through Wednesday
- Maximum sustained winds decreased to 35 mph
- Javier will move near the west coast of Baja California Sur through Wednesday
- Forecast to become a remnant low in the next day or so
- Tropical storm force winds extend 45 miles

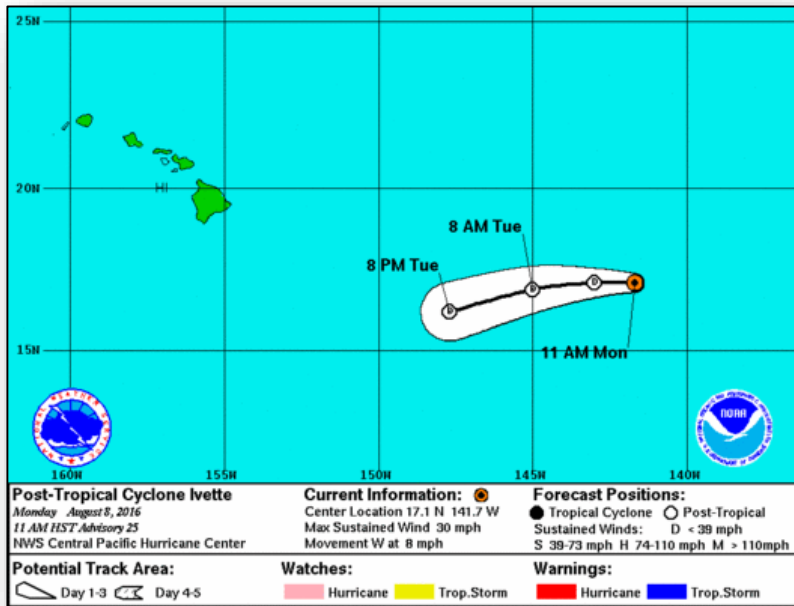
Tropical Outlook - Central Pacific



FEMA



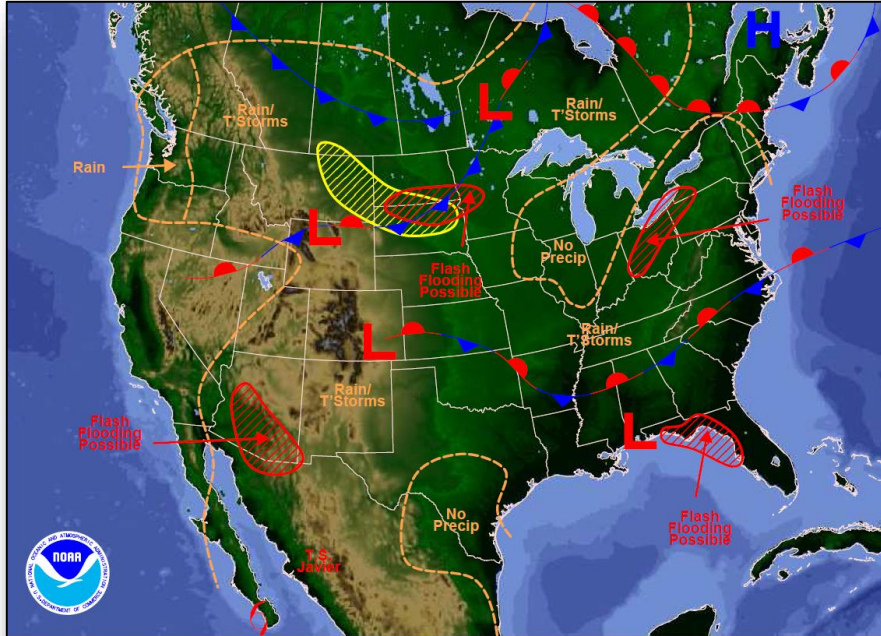
Tropical Outlook - Central Pacific



Post – Tropical Cyclone Ivette (Advisory #25 as of 8:00 p.m. EDT Aug 8) - FINAL

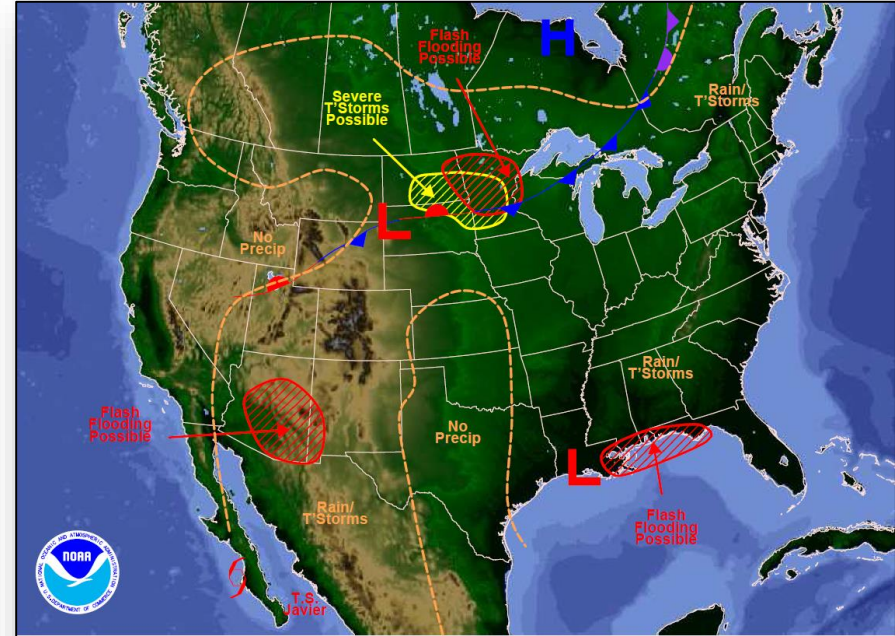
- Located about 900 miles East of Hilo, HI
- Moving WSW at 10 mph
- Maximum sustained winds 30 mph
- Forecast to dissipate by Wednesday
- Last Public Advisory

National Weather Forecast



Weather Forecast for Tue, Aug 09, 2016, issued 5:00 AM EDT
DOC/NOAA/NWS/NCEP/Weather Prediction Center
Prepared by McCreynolds based on WPC, SPC and NHC forecasts

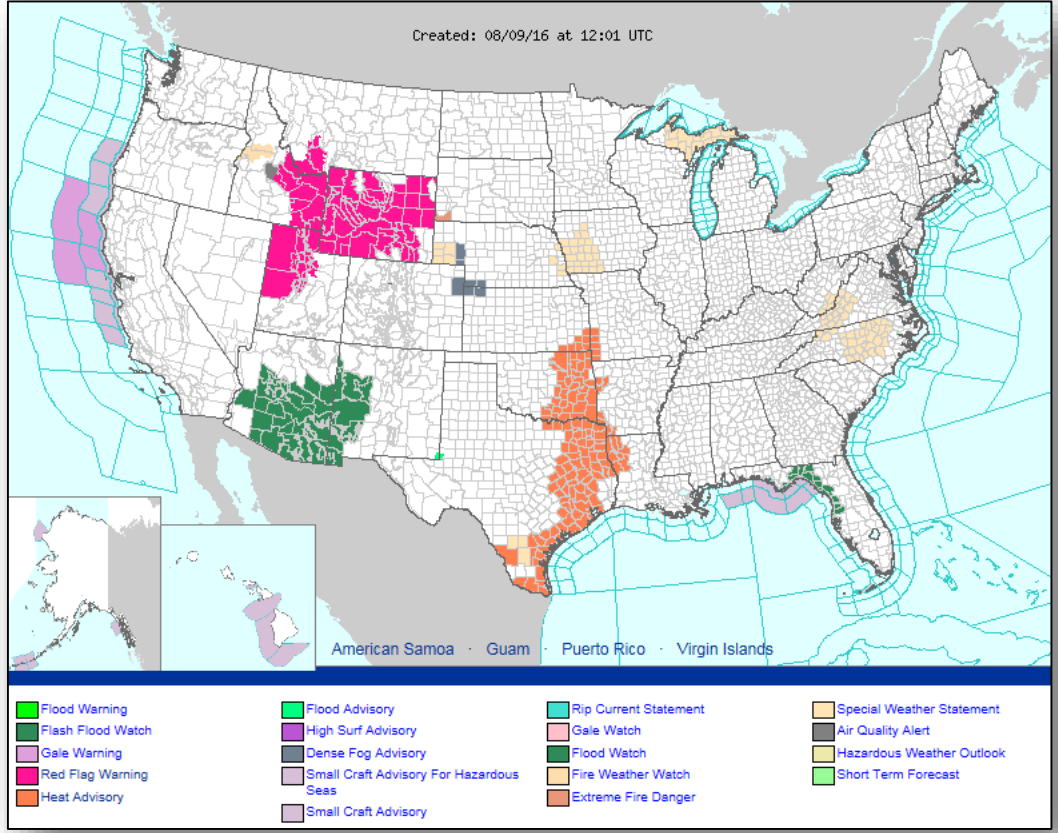
Today



Weather Forecast for Wed, Aug 10, 2016, issued 5:04 AM EDT Tue, Aug 09, 2016
DOC/NOAA/NWS/NCEP/Weather Prediction Center
Prepared by McCreynolds based on WPC, SPC and NHC forecasts

Tomorrow

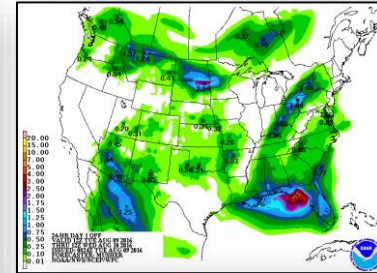
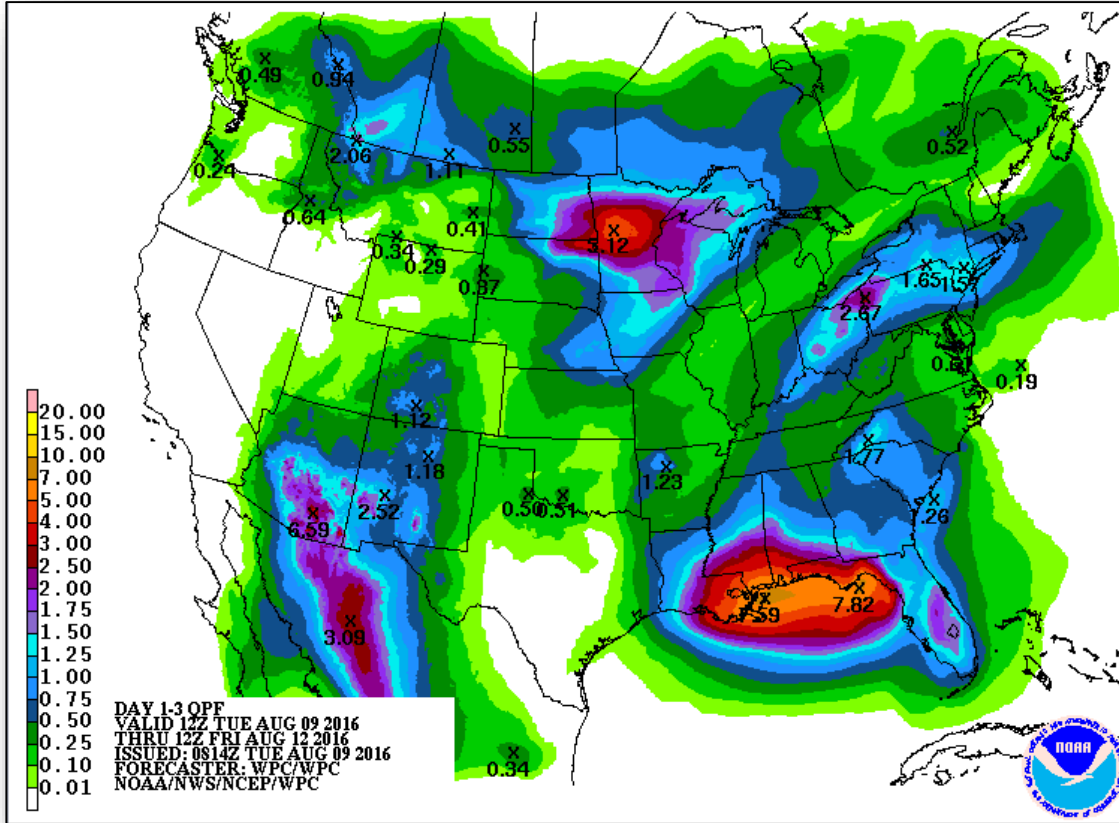
Active Watches & Warnings



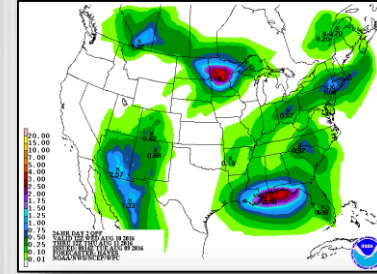
Precipitation Forecast - Days 1-3



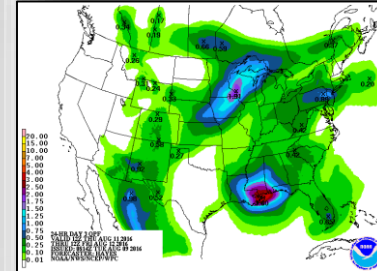
FEMA



Day 1



Day 2

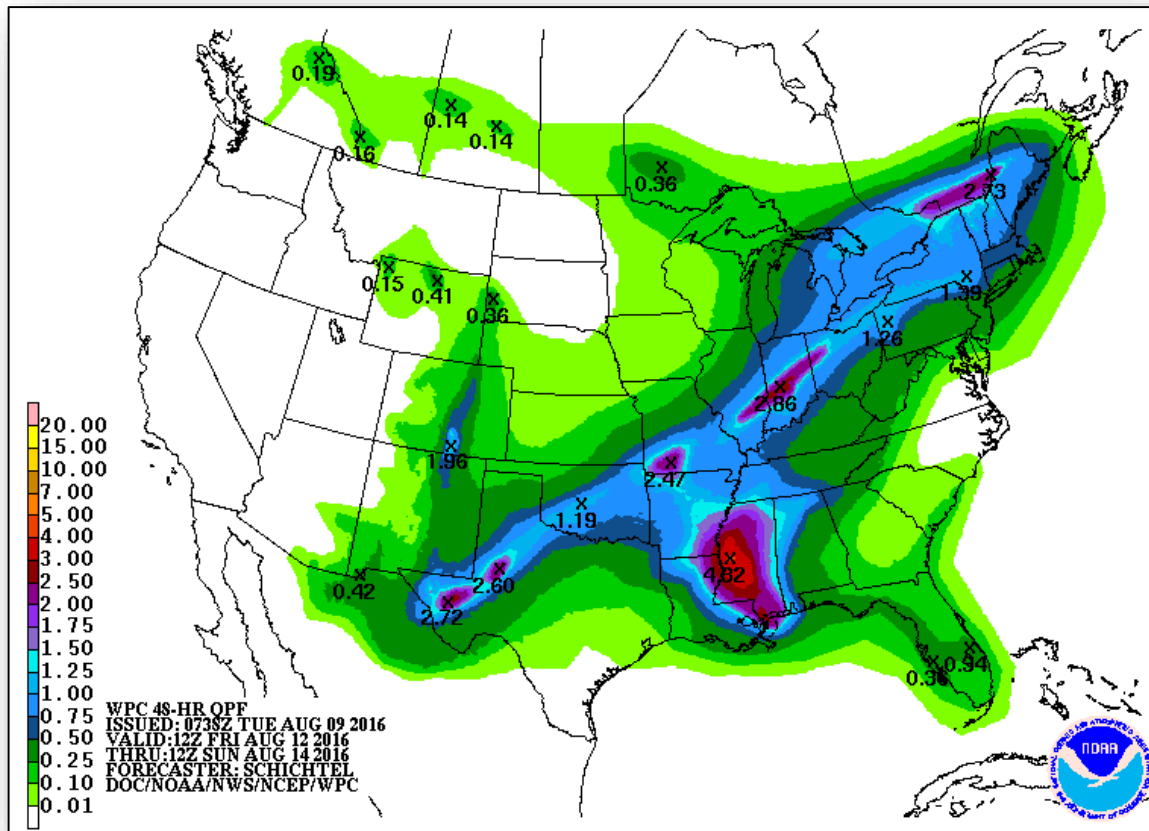


Day 3

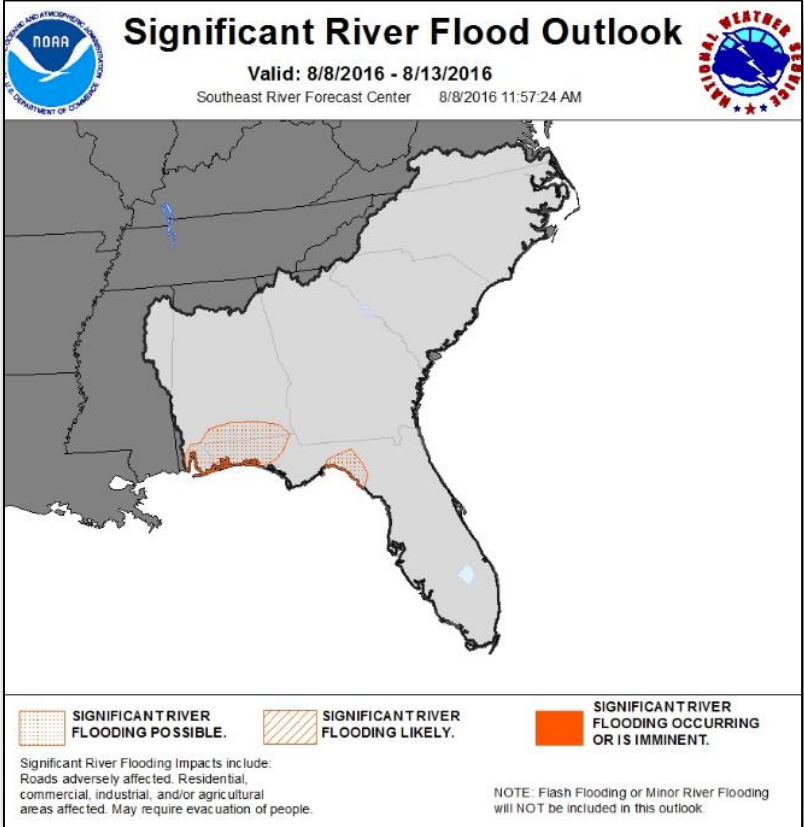
Precipitation Forecast - Days 4 - 5



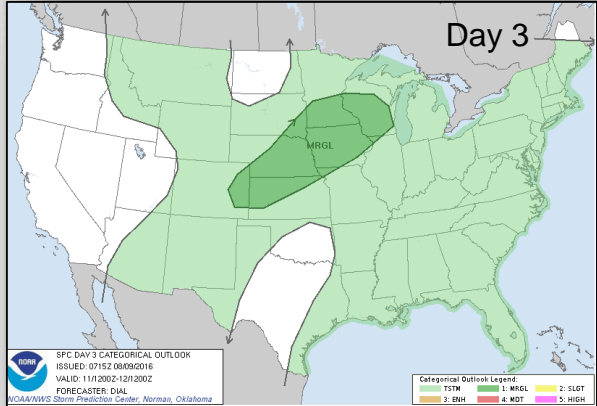
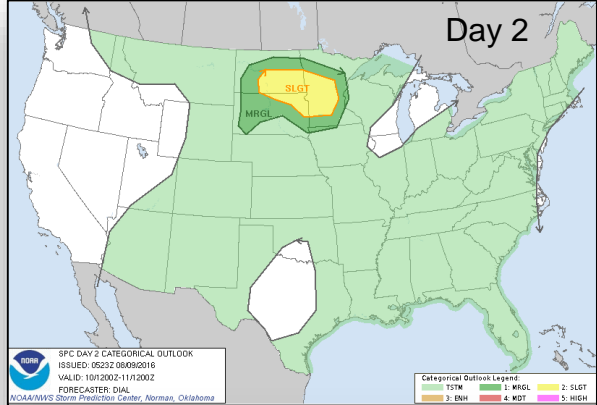
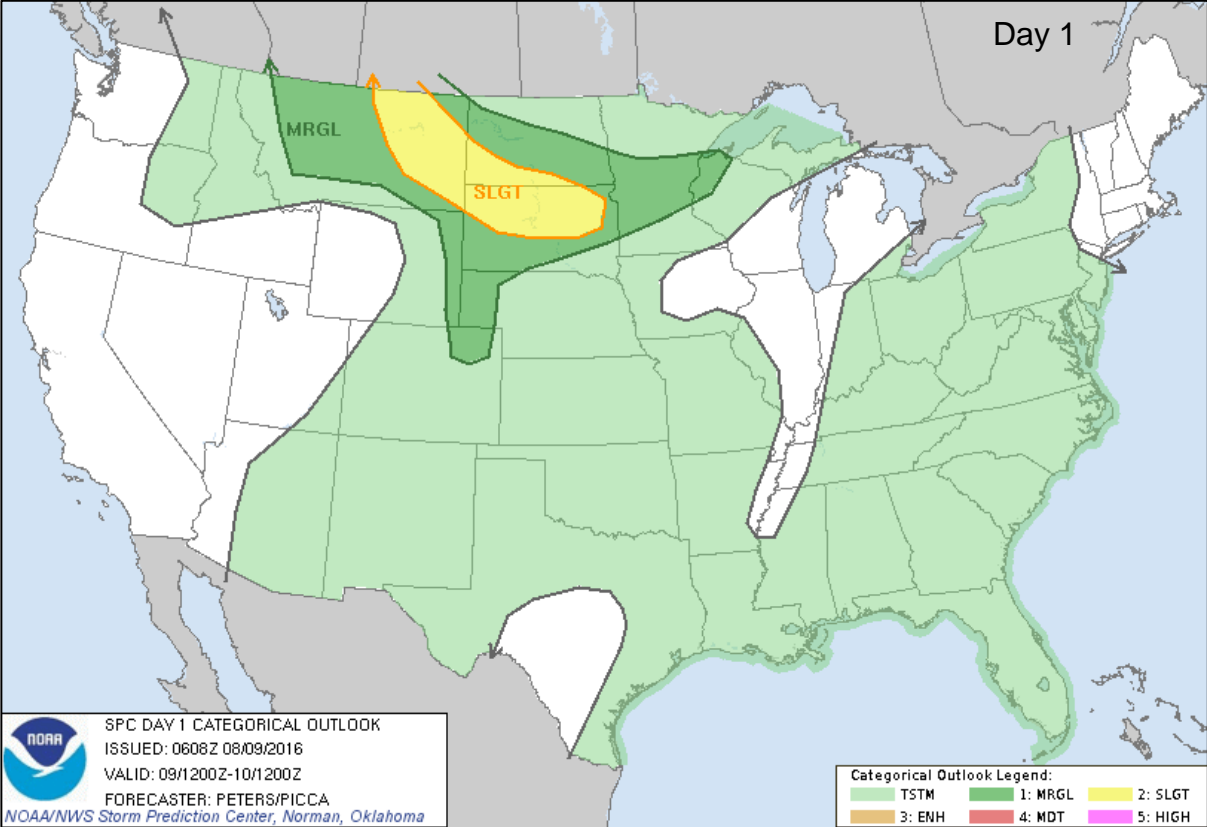
FEMA



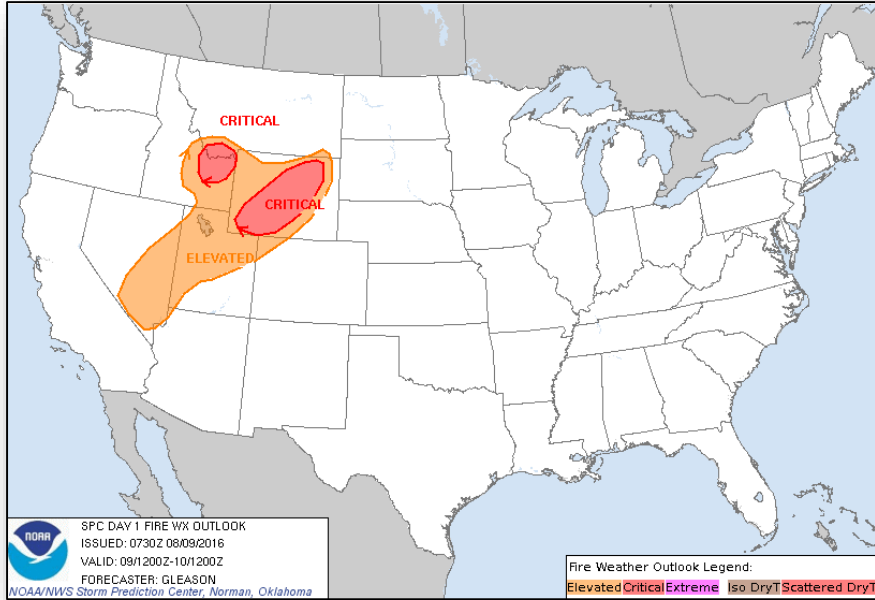
Significant River Flood Outlook



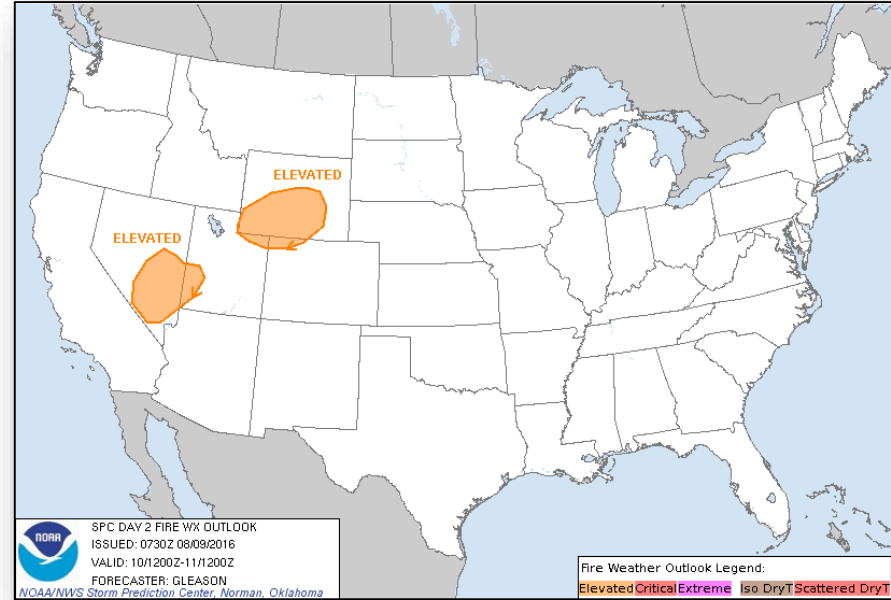
Severe Weather Outlook - Days 1-3



Fire Weather Outlook

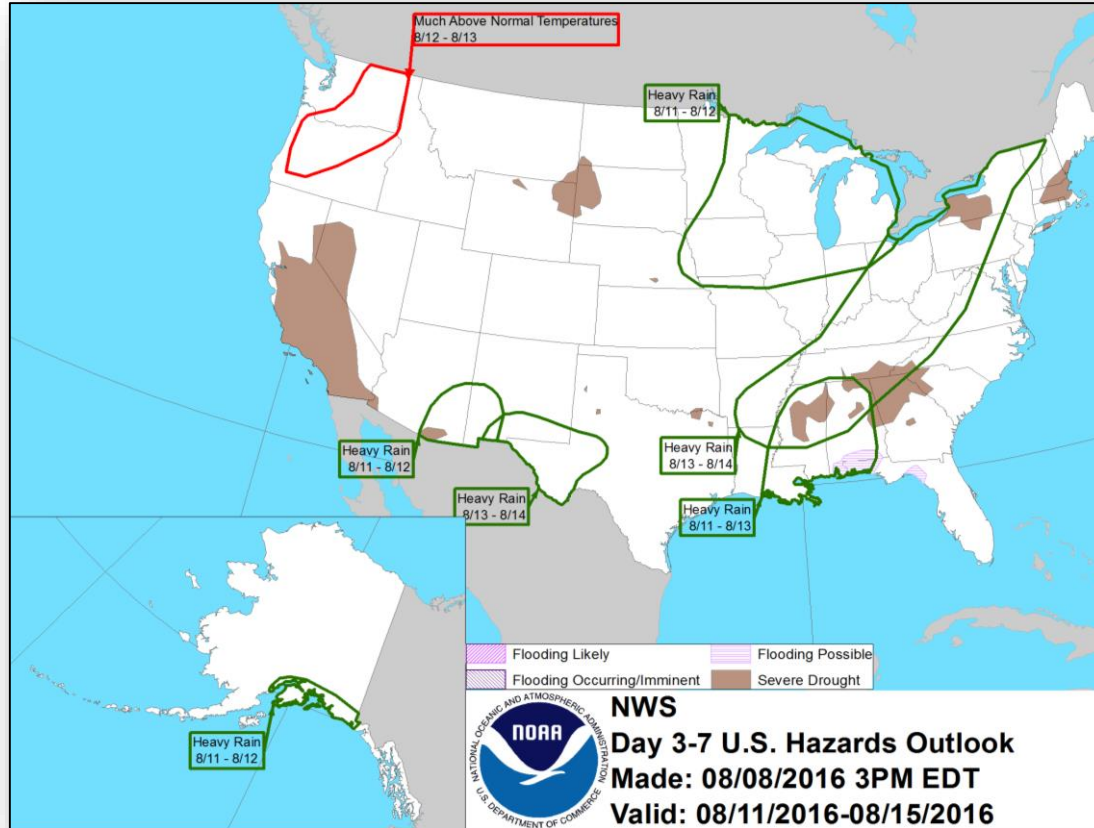


Day 1



Day 2

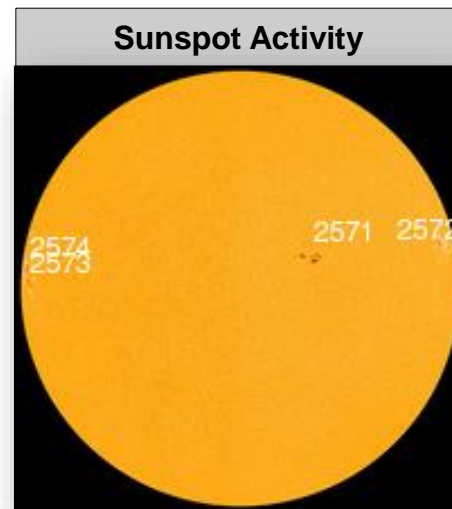
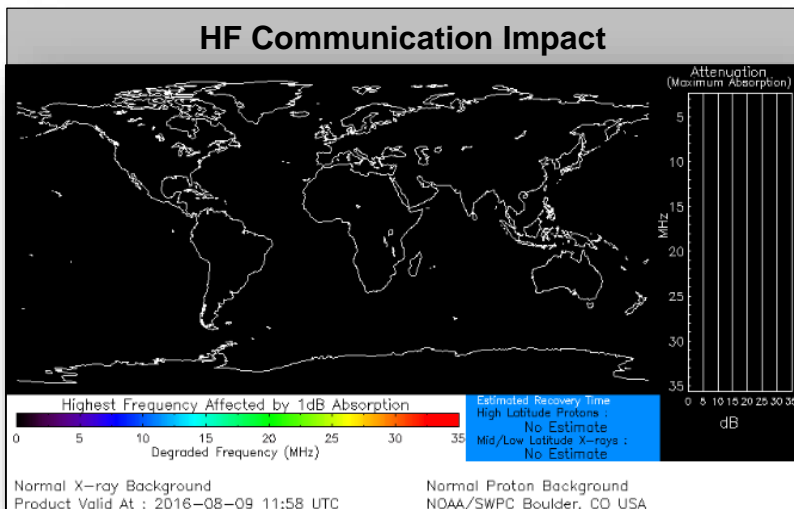
Hazards Outlook - August 11 -15





Space Weather

	Past 24 Hours	Current	Next 24 Hours
Space Weather Activity	None	None	None
Geomagnetic Storms	None	None	None
Solar Radiation Storms	None	None	None
Radio Blackouts	None	None	None



Dry Thunderstorms

- “Dry thunderstorms” used to describe storms that produce little or no rainfall at the ground
- Thunderstorms produce rain just below the cloud base but evaporates prior to reaching the ground – otherwise known as virga
- In many areas, 0.10 inch is a general threshold for determining whether a storm is categorized as “wet” or “dry” during a storm’s life cycle

Potential Impacts:

- When combined with dry vegetation, fire ignitions may occur as a result of cloud-to-ground lightning
- Dry thunderstorms can produce wildland fires, in addition to strong gusty winds that allows new or ongoing fires to spread rapidly



Source: NWS Albuquerque, NM

A lightning strike triggered a small grass fire near Pampa. Source: NWS Amarillo, TX

Wildfire Summary



Fire Name (County)	FMAG #	Acres burned	% Contained	Evacuations (Residents)	Structures Threatened	Structures Damaged / Destroyed	Fatalities / Injuries
Montana (1)							
Roaring Lion Fire (Ravalli County)	FEMA-5143-FM-MT	8,270 (+8)	50% (+20)	Mandatory Evacuations Lifted	903 (-1,444) 301 homes (-546)	1 / 65 (16 homes)	0 / 0
California (2)							
Soberanes Fire (Monterey County)	FEMA-5137-FM-CA	60,900 (+500)	50% (+5)	Mandatory	410 (400 homes)	5 (3 homes) / 68 (57 homes)	1 / 3
Pilot Fire (San Bernardino County)	FEMA-5144-FM-CA	6,298	6%	Mandatory & Voluntary	5,600 (5,300 homes)	0 / 0	0 / 0

Pilot Fire - California



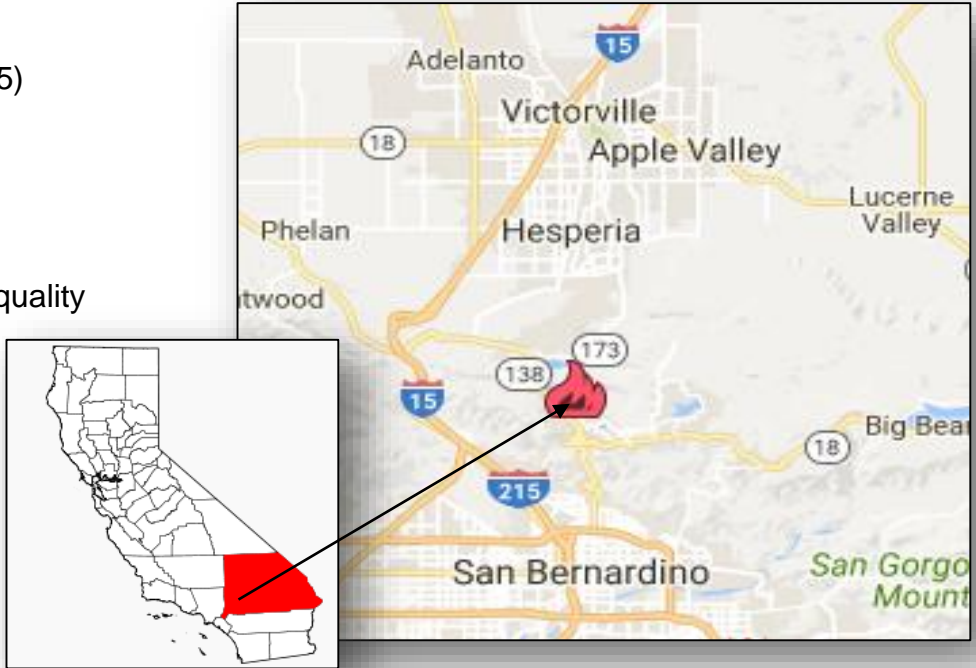
Fire Name	Location	Acres burned	% Contained	Est. Full Containment	FMAP	Structures Lost / Threatened	Fatalities / Injuries
Pilot Fire	San Bernardino County	6,298	6%	August 14, 2016	FEMA-5144-FM-CA Approved August 8	0 / 5,600 (5,300 homes)	0 / 0

Current Situation

- Fire began August 7, 2016 near Hesperia, CA (pop. 92,755)
- No injuries or fatalities
- Threatening 5,600 structures (5,300 homes)
- Mandatory and voluntary evacuations in place/planned
- One 150 Kv power line damaged
- Hesperia and Apple Valley schools closed due to poor air quality
- Unknown number of shelters open (ARC as of 6:21 am EDT)

Response

- CA EOC at Partial Activation for drought and fires
- Region IX RWC remains at Watch/Steady State



FMAG Requests and Declarations



Action (since last report)		Total	FMAG No. and State		
Requests DENIED		0			
Requests APPROVED		1	FEMA-5144-FM-CA (Pilot Fire)		
Approved FMAG Data					
Year	Current YTD	MTD	*Monthly Average	Cumulative Acres Burned YTD	Cumulative Denied FMAGs YTD
2016	28	6	13.3	222,440	3
Year	Total Previous FY	**Yearly Average		Total Acres Burned Previous Year	Total Denied FMAGs Previous Year
2015	33	36		250,658	2
* Reflects the 3-year average for current month/ ** Reflects 3-year total average					

Joint Preliminary Damage Assessments



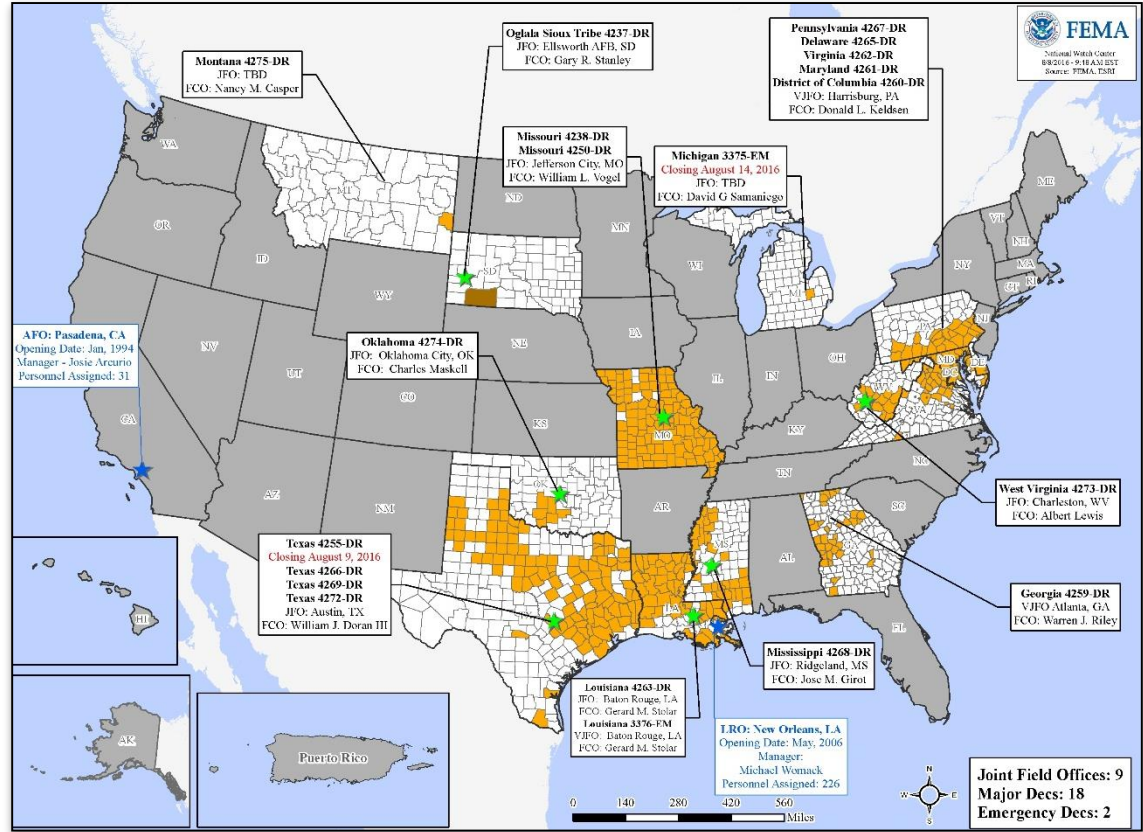
Region	State / Location	Event	IA/PA	Number of Counties		Start - End
				Requested	Complete	
III	MD	Severe Weather & Heavy Rains July 30, 2016	PA	1	0	8/4-TBD
III	WV	Severe Weather & Heavy Rains July 30, 2016	IA	1	0	8/5-TBD
			PA	1	0	8/6-TBD
V	WI	Severe Storms & Flooding July 8-12, 2016	IA	1 Tribe	0	8/8-TBD
IV	KY	Severe Storms, Tornadoes, Flooding & Strong Winds July 3-9, 2016	IA	2	2	8/2-8/5
			PA	22	21	8/2-TBD
IX	NV	Virginia Mountains Complex Fire July 28 - August 5, 2016	IA	1 Tribe	0	8/9-TBD
			PA	1 Tribe	0	8/9-TBD

Disaster Requests & Declarations



Declaration Requests in Process		Requests APPROVED (since last report)	Requests DENIED (since last report)
2	Date Requested	0	0
Fort Peck and Sioux Tribes – DR Severe Storm and Straight-line Winds	August 2, 2016		
WI – DR Severe Storms and Flooding	August 3, 2016		

Open Field Offices as of August 9, 2016



FEMA Readiness - Deployable Teams & Assets



Deployable Teams & Assets									
Resource	Status	Total	FMC Available		Partially Available	Not Available	Detailed, Deployed, Activated	Comments	Rating Criterion
FCO		37	12	32%	0	1	24		OFDC Readiness: FCO Green Yellow Red Type 1 3+ 2 1 Type 2 4+ 3 2 Type 3 4 3 2 FDRC 3 2 1
FDRC		10	5	50%	0	0	5		
US&R		28	27	96%	1	0	0	NJ-TF1: Partially Mission Capable	<ul style="list-style-type: none"> Green = Available/FMC Yellow = Available/PMC Red = Out-of-Service Blue = Assigned/Deployed
National IMAT		3	3	100%	0	0	0	East 2: Primary (On Call)	<ul style="list-style-type: none"> Green: 3 available Yellow: 1-2 available Red: 0 avail (<i>Individual N-IMAT red if 50% of Section Chiefs and/or Team Leader is unavailable for deployment.</i>)
Regional IMAT		13	10	77%	0	1	2	Deployed: Region I: Red / Reconstituting (FMC August 15) Region III: Deployed to WV (4273-WV) Region VIII: Deployed to MT & CO (4275-MT)	<ul style="list-style-type: none"> Green: >6 teams available Yellow: 4 - 6 teams available Red: < 4 teams available <i>R-IMAT also red if TL Ops/Log Chief is unavailable & has no qualified replacement</i>
MERS Teams		18	17	94%	0	0	1	Deployed: Maynard: Deployed to Frederick, MD	<ul style="list-style-type: none"> Green = >66% available Yellow = 33% to 66% available Red = <33% available

MERS Availability Summary



MERS Availability Summary

as of 8/9/2016

Legend	> 66%	< 66% & > 33%	< 33%
	Personnel Availability	Equipment Availability	% Deployed
Bothell MERS	70%	100%	23%
Denton MERS	79%	69%	15%
Denver MERS	98%	87%	0%
Frederick MERS	74%	100%	21%
Maynard MERS	78%	100%	0%
Thomasville MERS	94%	100%	0%
<i>Disaster Emergency Communications Division</i>			
Overall MERS Availability	79%	93%	13%

FEMA Readiness - National & Regional Teams



National/Regional Teams									
Resource	Status	Total	FMC Available		Partially Available	Not Available	Status	Comments	Rating Criterion
NWC	Green	5	5	100%	0	0	Not Activated		<ul style="list-style-type: none"> • Green = FMC • Yellow = PMC • Red = NMC
NRCC	Green	2	2	100%	0	0	Not Activated		
HLT	Green	1	1	100%	0	0	Activated		
DEST	Green						Not Activated		
RRCCs	Green	10	10	100%	0	0	Not Activated		
RWCs/MOCs	Green	10	10	100%	0	0	Not Activated		



FEMA

FEMA's mission is to support our citizens and first responders to ensure that as a nation we work together to build, sustain, and improve our capability to prepare for, protect against, respond to, recover from, and mitigate all hazards.