

The Disaster Center is dedicated to the idea that disaster mitigation is cost effective and individuals pursuing their own interest are the greatest potential force for disaster reduction.

Please consider making a small donation to the Disaster Center



When disaster mitigation is cost effective, we are on the road to bringing disasters to an end.



# **FEMA**

## **Daily Operations Briefing**

**Saturday, August 6, 2016**

**8:30 a.m. EDT**

# Significant Activity - August 5 - 6



**Significant Events:** None

**Tropical Activity:**

- Atlantic – Tropical Depression Earl; Disturbance 1
- Eastern Pacific – Tropical Storm Ivette; Disturbance 1
- Central Pacific – No tropical cyclones expected through Sunday morning
- Western Pacific – No activity threatening U.S. territories

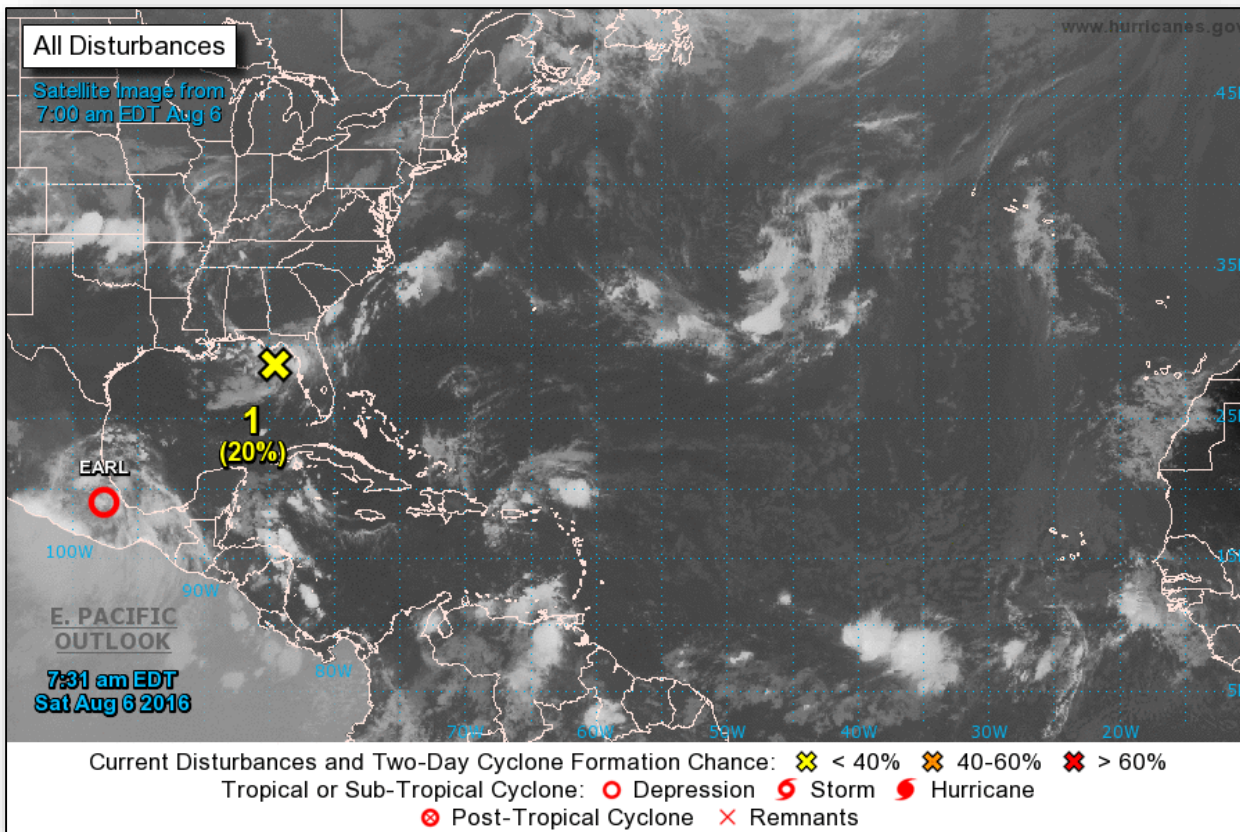
**Significant Weather:**

- Flash flooding – CO, KS, OK, MO, AR & FL
- Rain and thunderstorms – California, Central Great Basin, Southwest, Central Plains, lower Mississippi River Valley, Ohio/Tennessee Valleys, Southeast, Mid-Atlantic and Northeast
- Critical fire weather areas – ID, MT & WY
- Isolated Dry Thunderstorms – CA, OR, WA, ID, MT, WY, CO, UT & NV
- Red Flag Warnings – OR, WA & ID
- Space Weather – Past 24 hours, no storms observed; next 24 hours, no storms predicted

**Earthquake Activity:** No significant activity

**Declaration Activity:** None

# Tropical Outlook - Atlantic

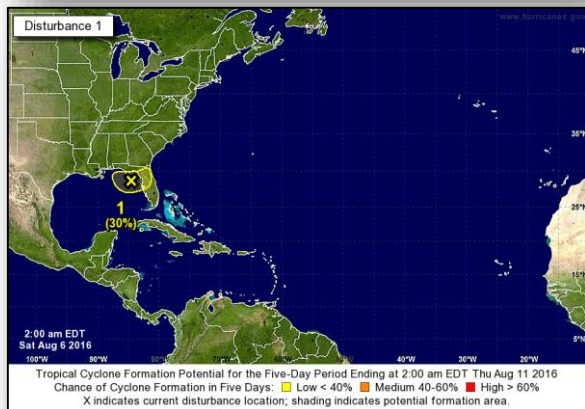


# Tropical Outlook - Atlantic



## Tropical Depression Earl (Advisory #16A as of 8:00 a.m. EDT)

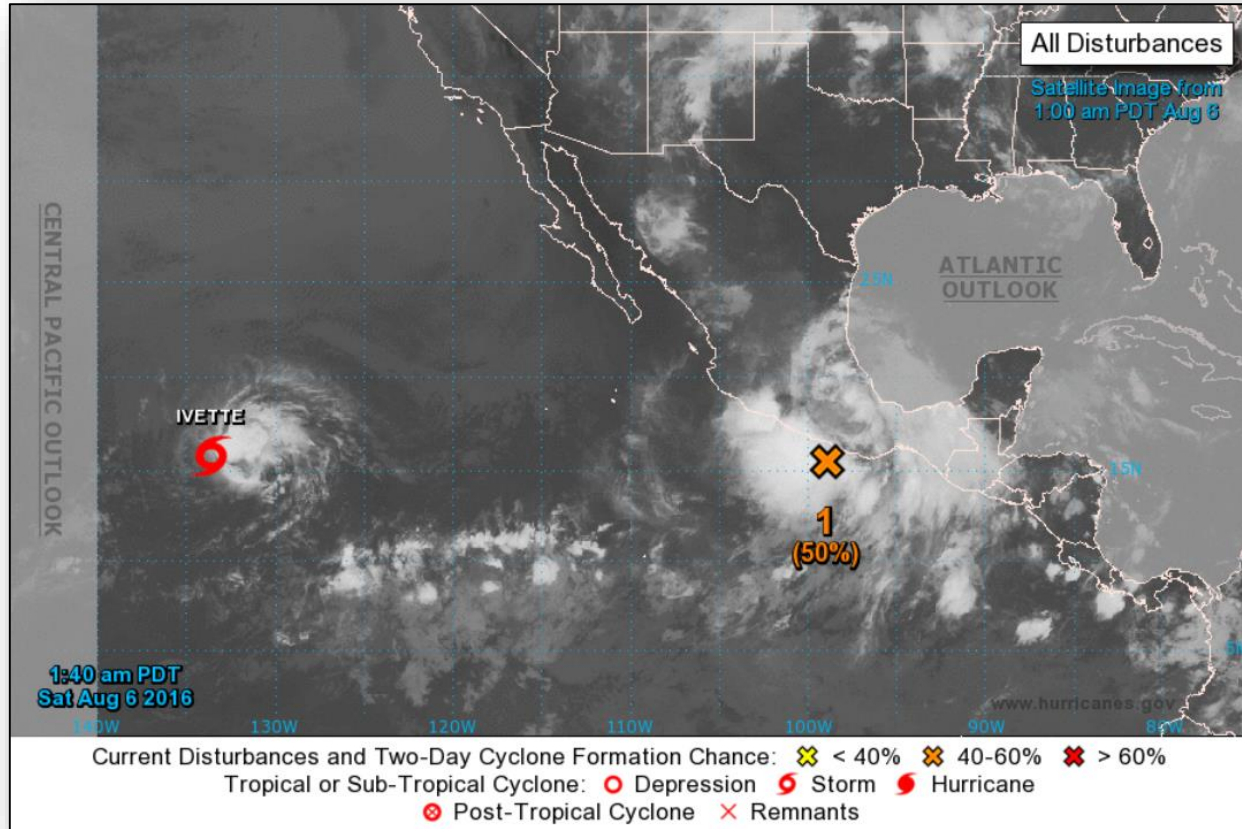
- Located 100 miles WSW of Veracruz, Mexico
- Moving W at 10 mph; this motion expected to continue next couple of days
- Maximum sustained winds 35 mph
- Expected to dissipate over Mexico later today
- No coastal watches or warnings in effect



## Disturbance 1 (As of 2:00 a.m. EDT)

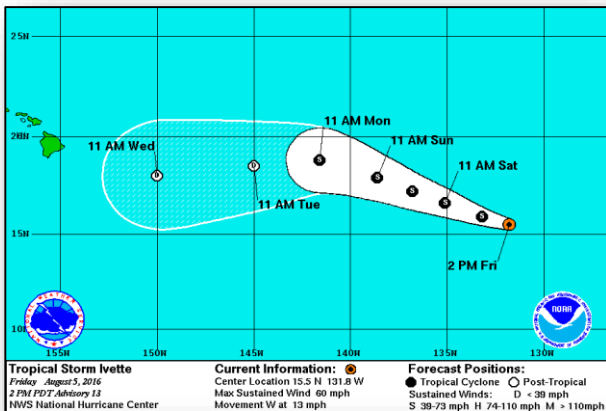
- Located over NE Gulf of Mexico
- Some development possible
- Formation chance through 48 hours: LOW (20%)
- Formation chance through 5 days: LOW (30%)

# Tropical Outlook - Eastern Pacific



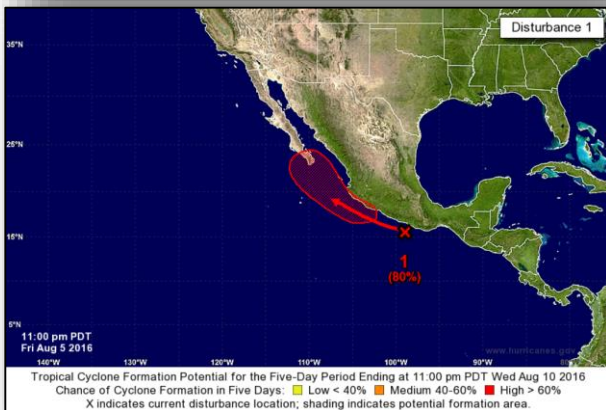


# Tropical Outlook - Eastern Pacific



## Tropical Storm Ivette (Advisory #15 as of 5:00 a.m. EDT)

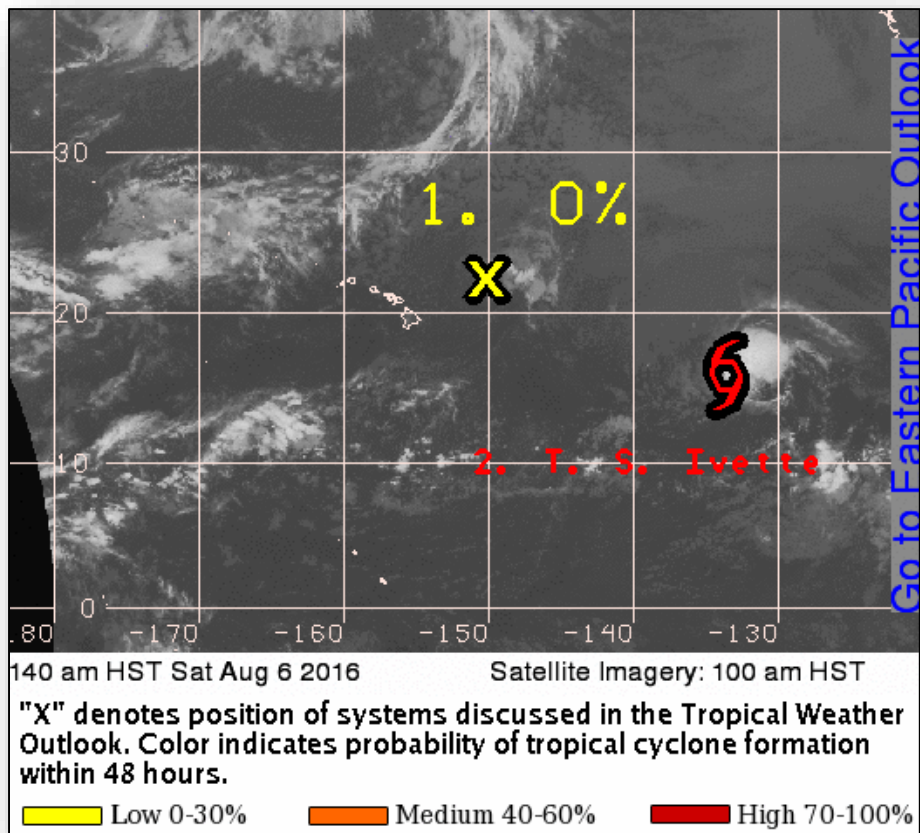
- Located 1,615 miles WSW of the southern tip of Baja California, Mexico
- Moving W at 10 mph
- Maximum sustained winds 60 mph
- A turn toward the WNW expected today
- Forecast to weaken Sunday or Monday
- Tropical storm force winds extend 90 miles



## Disturbance 1 (As of 2:00 a.m. EDT)

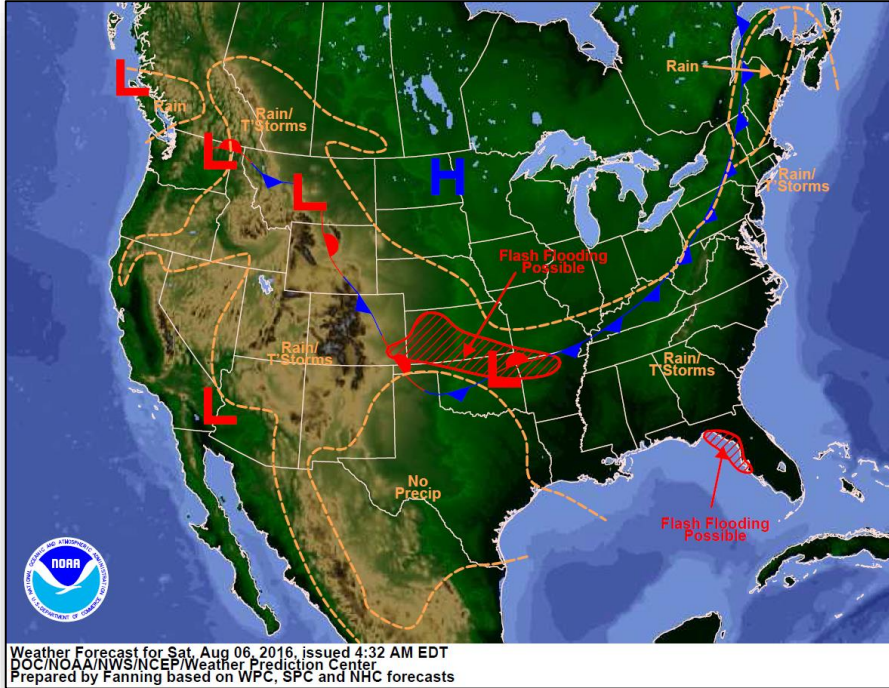
- Located S of Acapulco, Mexico
- Moving WNW towards Baja California, Mexico peninsula
- Expected to move WNW and merge with remnants of TS Earl
- Conditions conducive to become a Tropical Depression
- Formation chance through 48 hours: MED (50%)
- Formation chance through 5 days: HIGH (80%)

# Tropical Outlook - Central Pacific

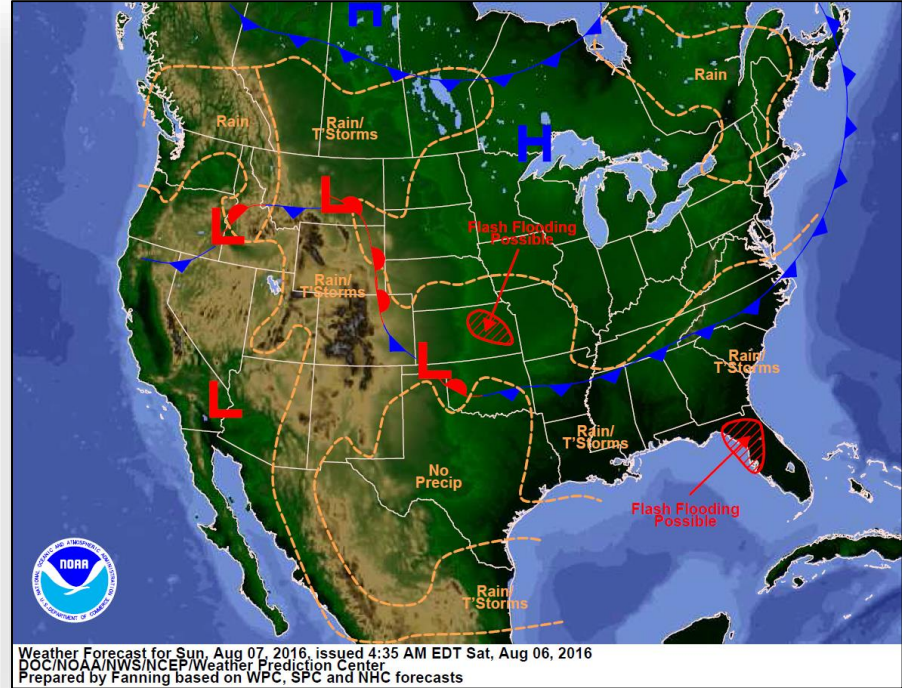




# National Weather Forecast

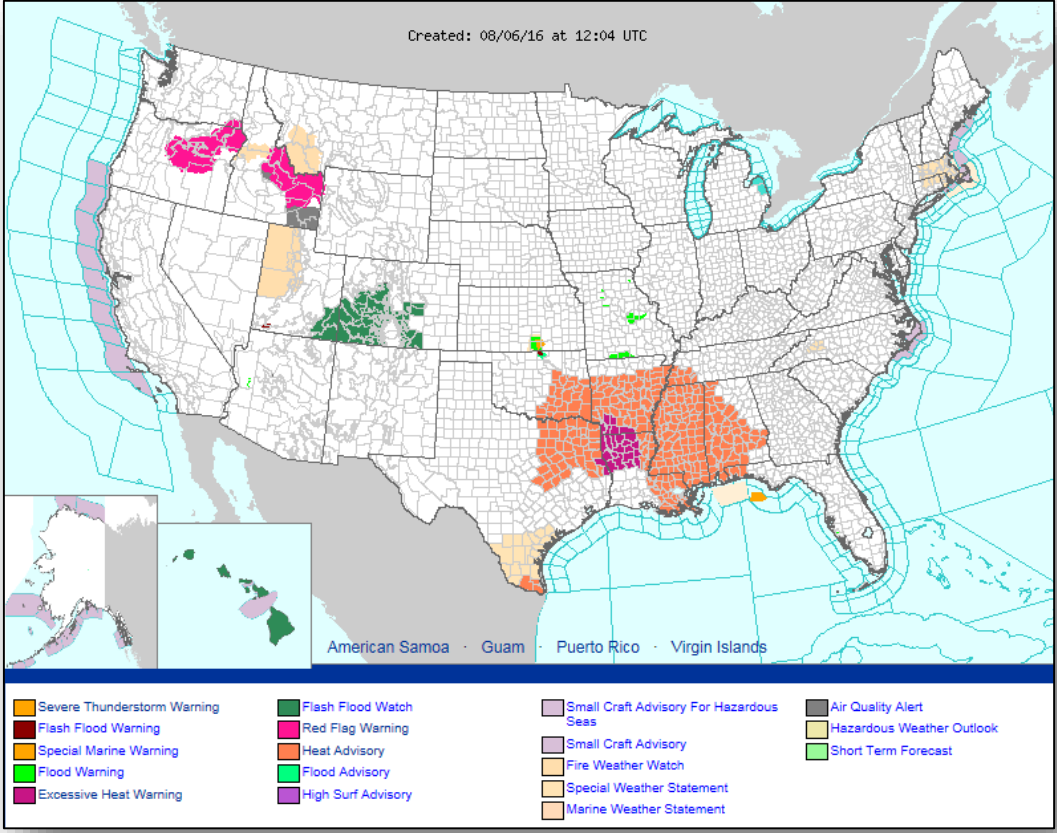


*Today*



*Tomorrow*

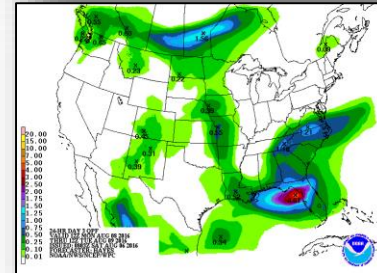
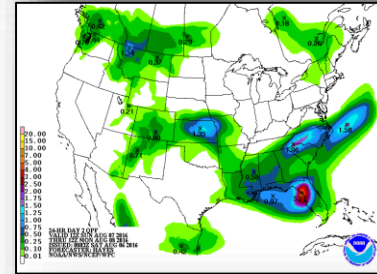
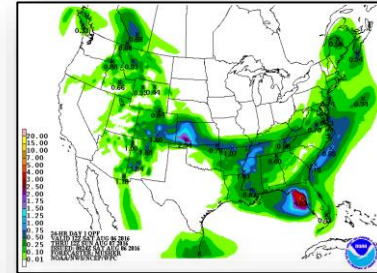
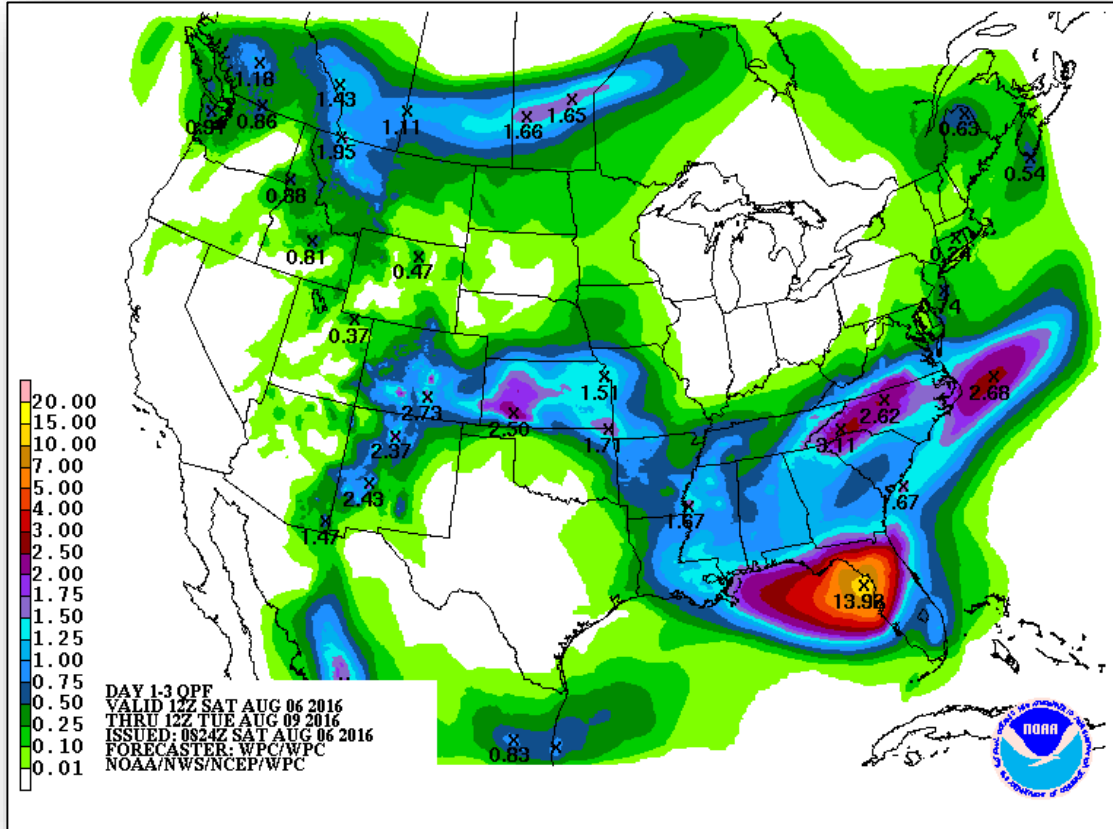
# Active Watches & Warnings



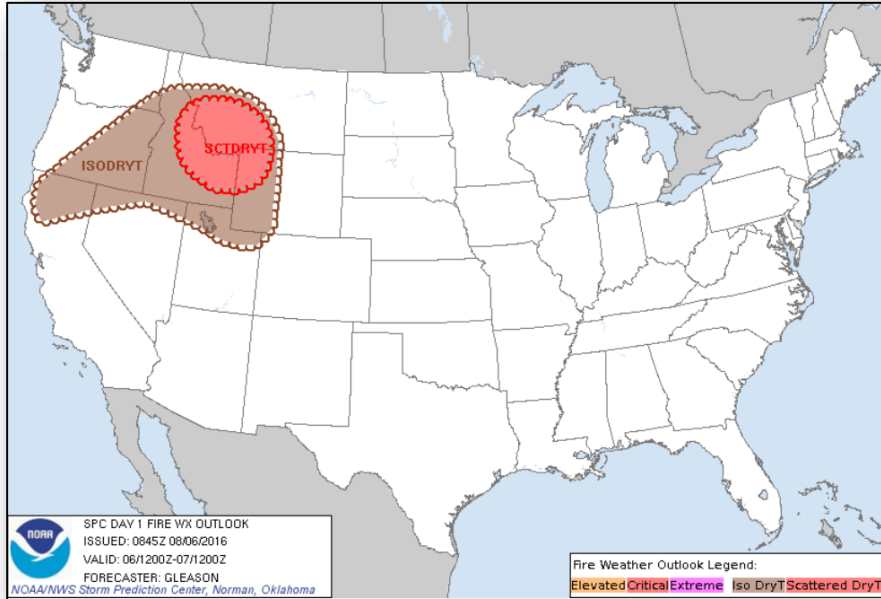
# Precipitation Forecast - Days 1-3



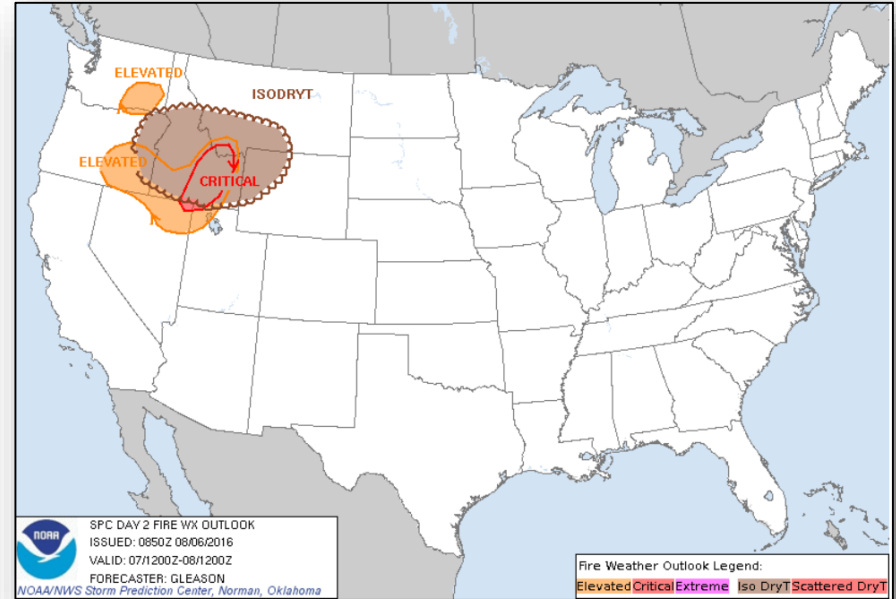
FEMA



# Fire Weather Outlook

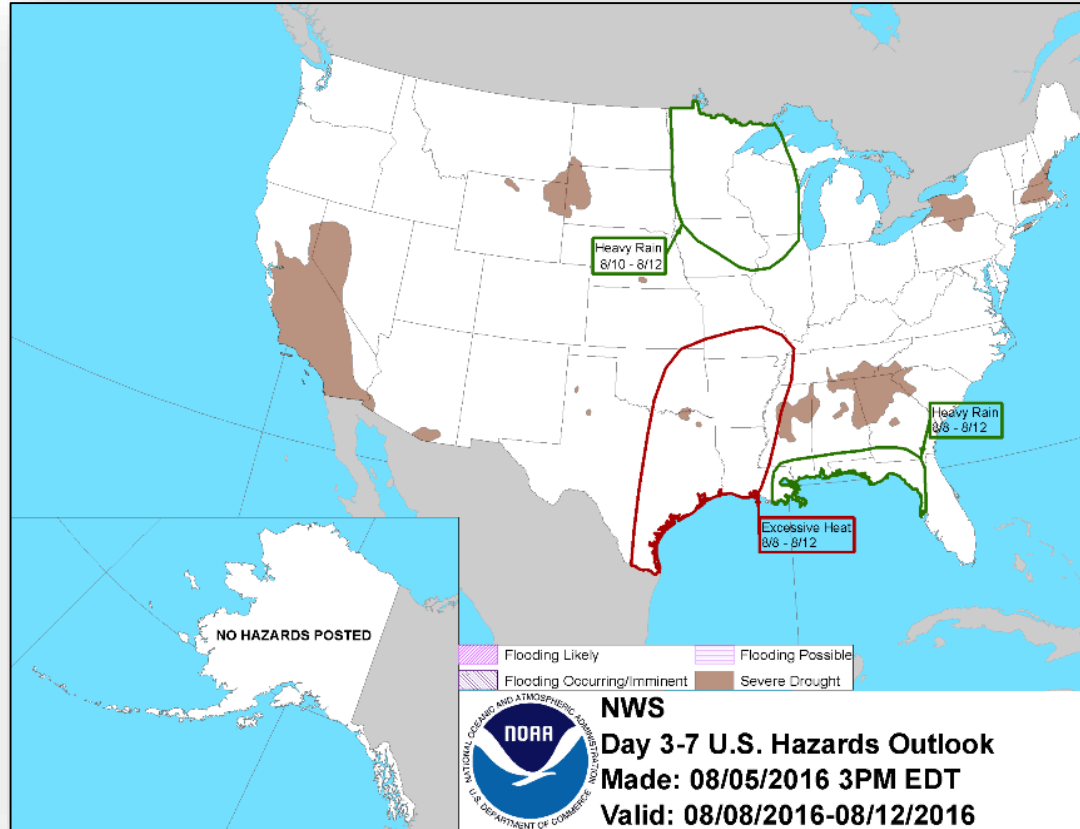


Day 1



Day 2

# Hazards Outlook - August 7 -11

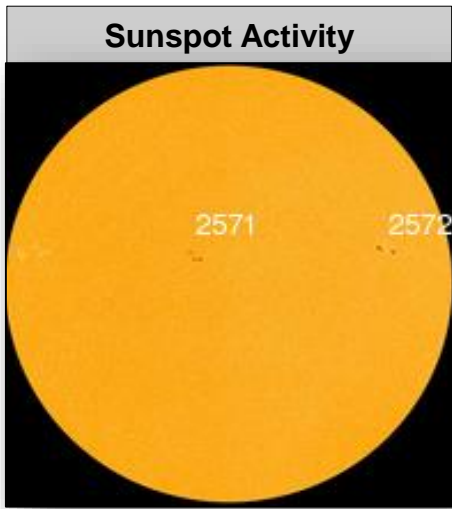
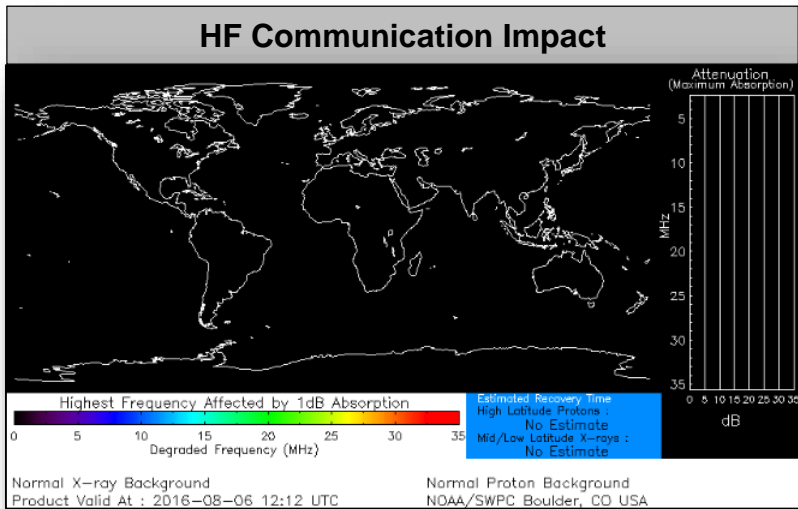






# Space Weather

	Past 24 Hours	Current	Next 24 Hours
Space Weather Activity	None	None	None
Geomagnetic Storms	None	None	None
Solar Radiation Storms	None	None	None
Radio Blackouts	None	None	None





# Wildfire Summary



Fire Name (County)	FMAG #	Acres burned	% Contained	Evacuations (Residents)	Structures Threatened	Structures Damaged / Destroyed	Fatalities / Injuries
<b>California (1)</b>							
Soberanes Fire (Monterey County)	FEMA-5137-FM-CA	53,900 (+210)	40% (+5)	Mandatory	600 homes	5 (3 homes) / 68 (57 homes)	1 / 3
<b>Montana (1)</b>							
Roaring Lion Fire (Ravalli County)	FEMA-5143-FM-MT	7,927 (+174)	20% (+5)	Mandatory	2,347 (847 homes)	1 / 65 (16 homes)	0 / 0

# Joint Preliminary Damage Assessments



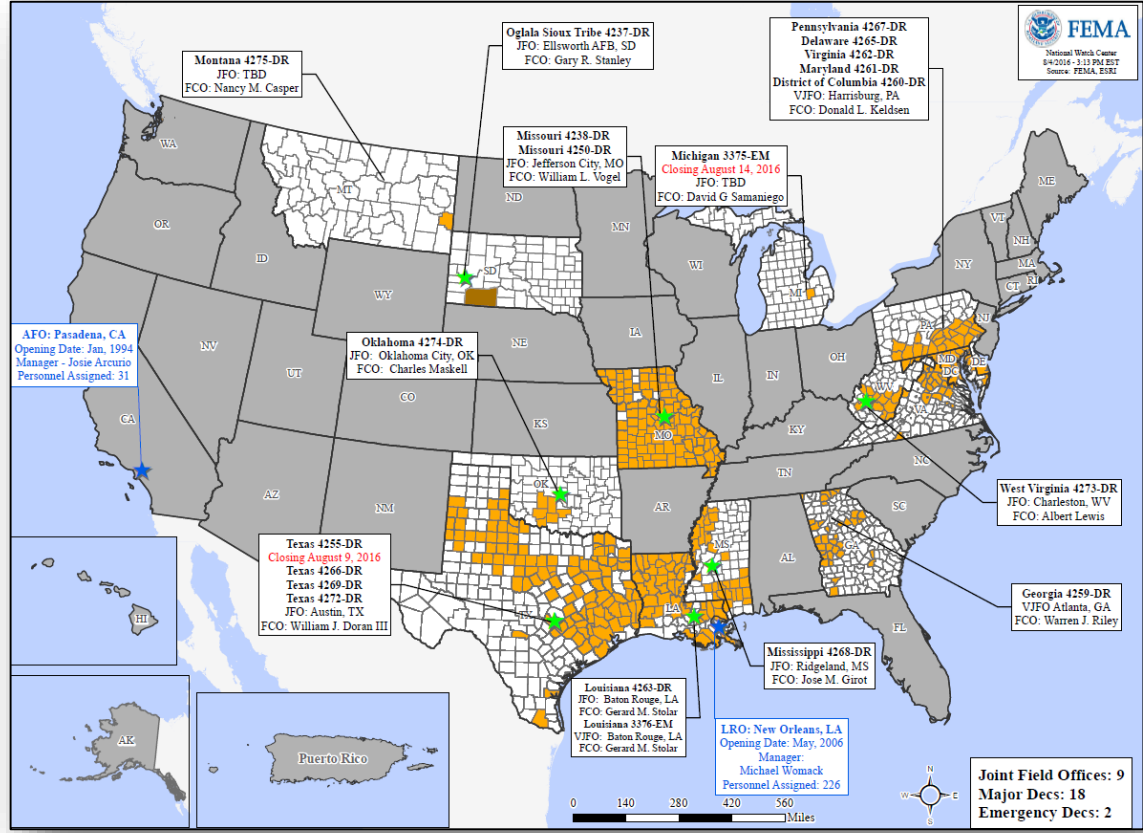
Region	State / Location	Event	IA/PA	Number of Counties		Start – End
				Requested	Complete	
III	WV	Severe Weather & Heavy Rains July 30, 2016	IA	1	0	8/5 - TBD
			PA	1	0	8/6 - TBD
III	MD	Severe Weather & Heavy Rains July 30, 2016	PA	1	0	8/4 - TBD
IV	KY	Severe Storms, Tornadoes, Flooding & Strong Winds July 3-9, 2016	IA	2	1	8/2 - TBD
			PA	22	14 (+7)	8/2 - TBD

# Disaster Requests & Declarations



Declaration Requests in Process		Requests APPROVED (since last report)	Requests DENIED (since last report)
<b>2</b>	<b>Date Requested</b>	<b>0</b>	<b>0</b>
Fort Peck Reservation (Assiniboine & Sioux Tribes) DR Severe Storm and Straight-Line Winds	August 2, 2016		
WI – DR Severe Storms and Flooding	August 3, 2016		

# Open Field Offices as of August 6, 2016



# FEMA Readiness - Deployable Teams & Assets



Deployable Teams & Assets									
Resource	Status	Total	FMC Available		Partially Available	Not Available	Detailed, Deployed, Activated	Comments	Rating Criterion
FCO		37	11	30%	0	3	23		OFDC Readiness: FCO Green Yellow Red Type 1 3+ 2 1 Type 2 4+ 3 2 Type 3 4 3 2 FDRC 3 2 1
FDRC		10	4	40%	0	0	6		
US&R		28	27	96%	1	0	0	NJ-TF1: Partially Mission Capable	<ul style="list-style-type: none"> <li>Green = Available/FMC</li> <li>Yellow = Available/PMC</li> <li>Red = Out-of-Service</li> <li>Blue = Assigned/Deployed</li> </ul>
National IMAT		3	3	100%	0	0	0	East 2: Primary (On Call)	<ul style="list-style-type: none"> <li>Green: 3 available</li> <li>Yellow: 1-2 available</li> <li>Red: 0 avail (<i>Individual N-IMAT red if 50% of Section Chiefs and/or Team Leader is unavailable for deployment.</i>)</li> </ul>
Regional IMAT		13	10	77%	0	2	1	<u>Deployed:</u> Region I: Reconstituting (FMC - Aug 15, 2016) Region III: WV (4273-WV) Region VII: Reconstituting (FMC - Aug 7, 2016)	<ul style="list-style-type: none"> <li>Green: &gt;6 teams available</li> <li>Yellow: 4 - 6 teams available</li> <li>Red: &lt; 4 teams available</li> </ul> R-IMAT also red if TL Ops/Log Chief is unavailable & has no qualified replacement
MERS Teams		18	18	100%	0	0	0	<u>Deployed:</u> None	<ul style="list-style-type: none"> <li>Green = &gt;66% available</li> <li>Yellow = 33% to 66% available</li> <li>Red = &lt;33% available</li> </ul>

# FEMA Readiness - National & Regional Teams



National/Regional Teams									
Resource	Status	Total	FMC Available		Partially Available	Not Available	Status	Comments	Rating Criterion
NWC		5	5	100%	0	0	Not Activated		<ul style="list-style-type: none"> <li>• Green = FMC</li> <li>• Yellow = PMC</li> <li>• Red = NMC</li> </ul>
NRCC		2	2	100%	0	0	Not Activated		
HLT		1	1	100%	0	0	Activated		
DEST							Not Activated		
RRCCs		10	10	100%	0	0	Not Activated		
RWCs/MOCs		10	10	100%	0	0	Not Activated		





# FEMA

**FEMA's mission is to support our citizens and first responders to ensure that as a nation we work together to build, sustain, and improve our capability to prepare for, protect against, respond to, recover from, and mitigate all hazards.**