

The Disaster Center is dedicated to the idea that disaster mitigation is cost effective and individuals pursuing their own interest are the greatest potential force for disaster reduction.

Please consider making a small donation to the Disaster Center



When disaster mitigation is cost effective, we are on the road to bringing disasters to an end.



# FEMA

## Daily Operations Briefing

Thursday, August 4, 2016

8:30 a.m. EDT

# Significant Activity - August 3 - 4



**Significant Events:** None

**Tropical Activity:**

- Atlantic – Hurricane Earl (Category 1)
- Eastern Pacific – Tropical Storm Ivette
- Central Pacific – Post-Tropical Cyclone Howard - FINAL
- Western Pacific – No activity threatening U.S. territories

**Significant Weather:**

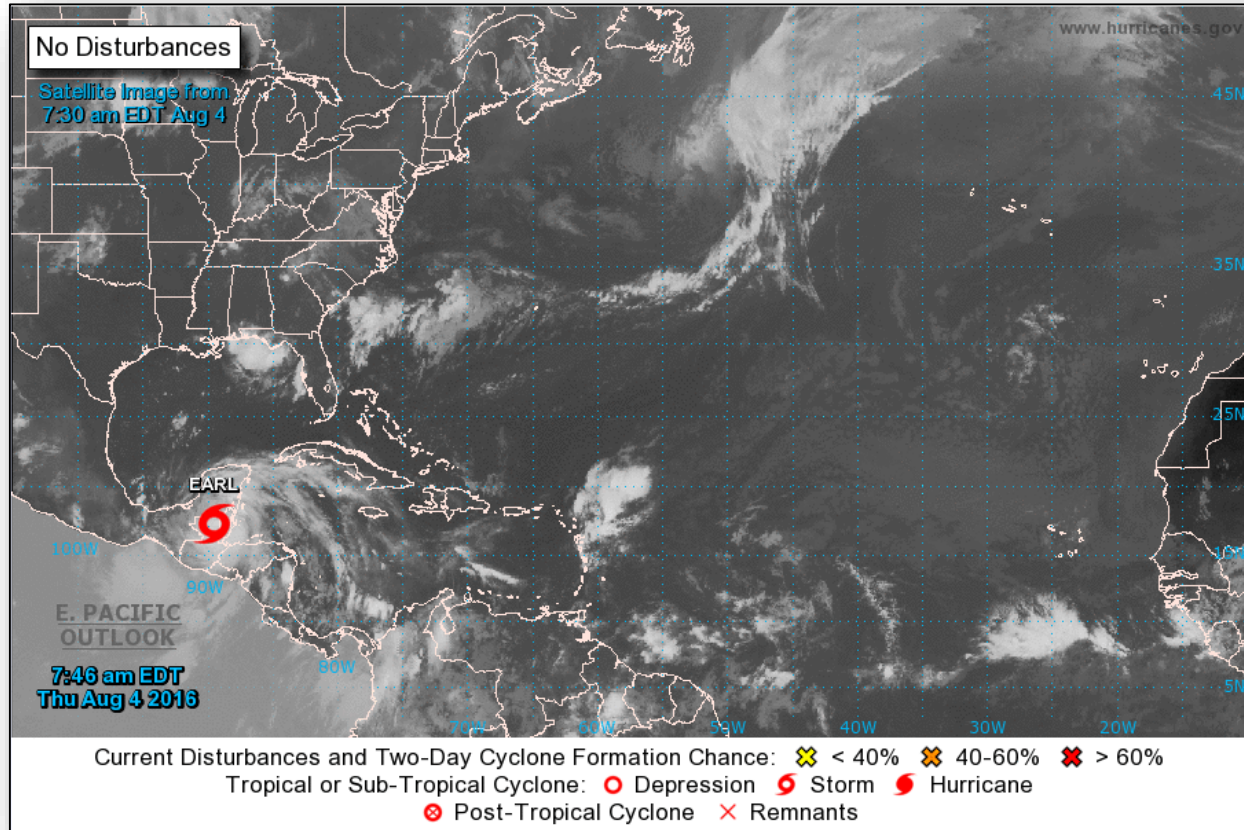
- Severe thunderstorms possible – Upper Mississippi Valley and Great Lakes
- Flash flooding possible – Southwest to Central/Southern Rockies, Upper/Middle Mississippi Valleys; Ohio/Tennessee Valleys to Carolinas
- Rain and thunderstorms – Central Great Basin to Northeast and Mid-Atlantic, Southwest to Southeast
- Elevated fire weather areas – CA & NV
- Red Flag Warnings – None
- Space Weather – Past 24 hours – minor, G1 geomagnetic storms occurred; next 24 hours – none

**Earthquake Activity:** No significant activity

**Declaration Activity:**

- Major Disaster Declaration approved- MT
- Request for Major Disaster Declaration – WI

# Tropical Outlook - Atlantic



# Tropical Outlook - Atlantic



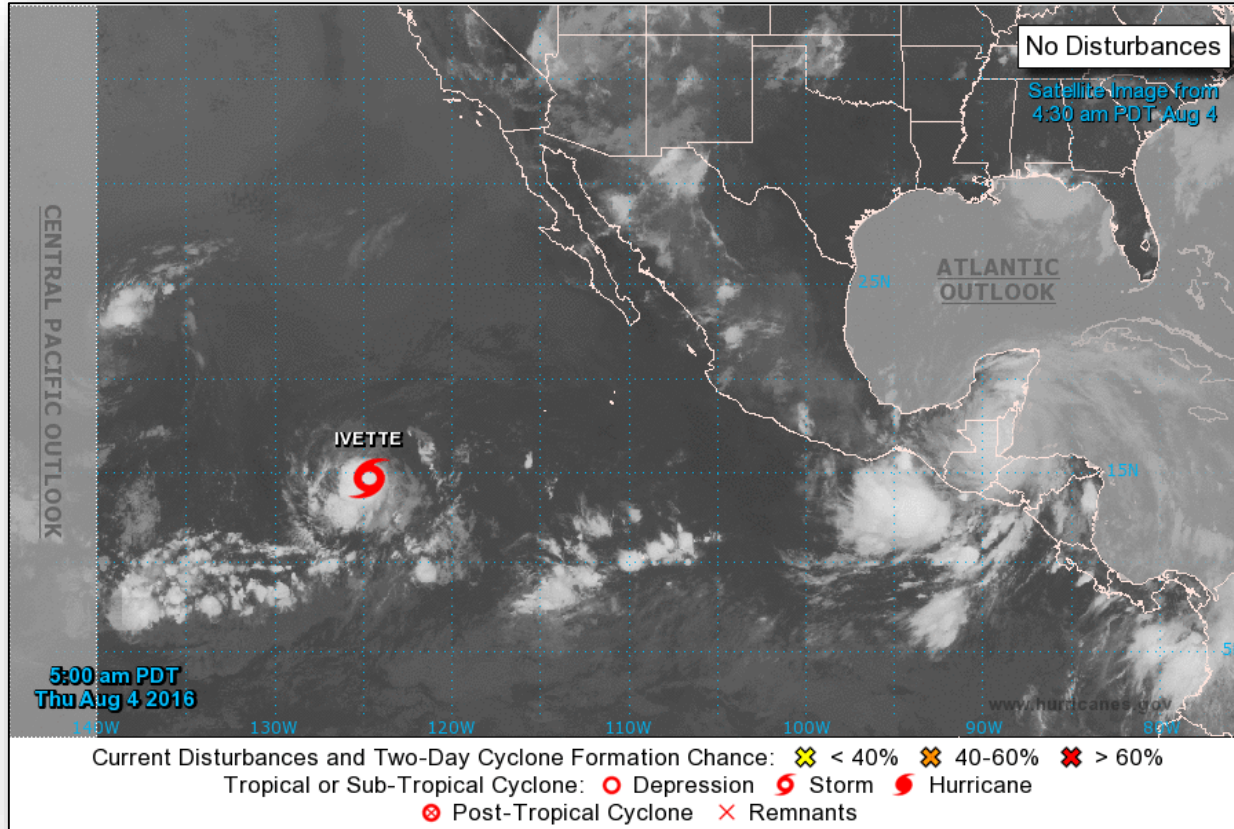
## Hurricane Earl (Advisory #8 as of 5:00 a.m. EDT)

- Located 50 miles WSW of Belize City
- Moving W at 15 mph
- A turn WNW and decrease in forward speed expected later today
- Maximum winds 75 mph (Category 1 hurricane)
- Additional weakening expected as center moves farther inland
- Forecast to weaken to a tropical storm later this morning and to a tropical depression by Friday morning
- Hurricane force winds extend 25 miles
- Tropical storm force winds extend 140 miles

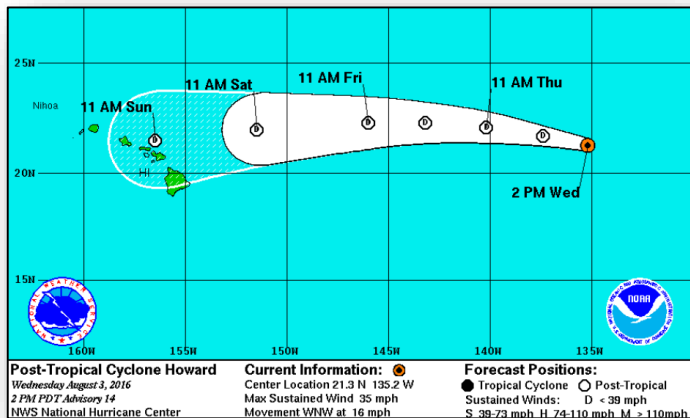
# Tropical Outlook - Eastern Pacific



FEMA

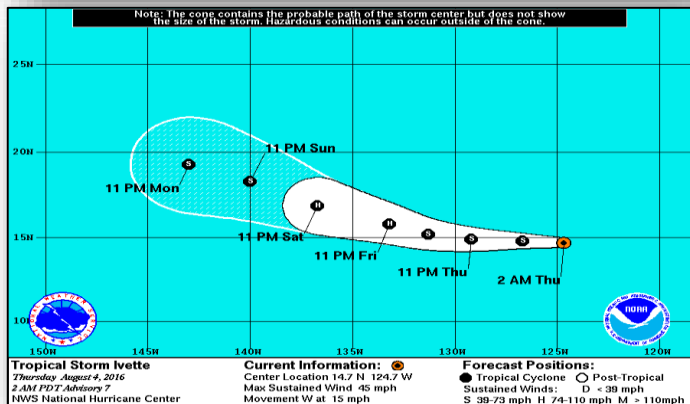


# Tropical Outlook - Eastern Pacific



## Post Tropical Cyclone Howard **FINAL** (Advisory #14 As of 5:00 a.m. EDT)

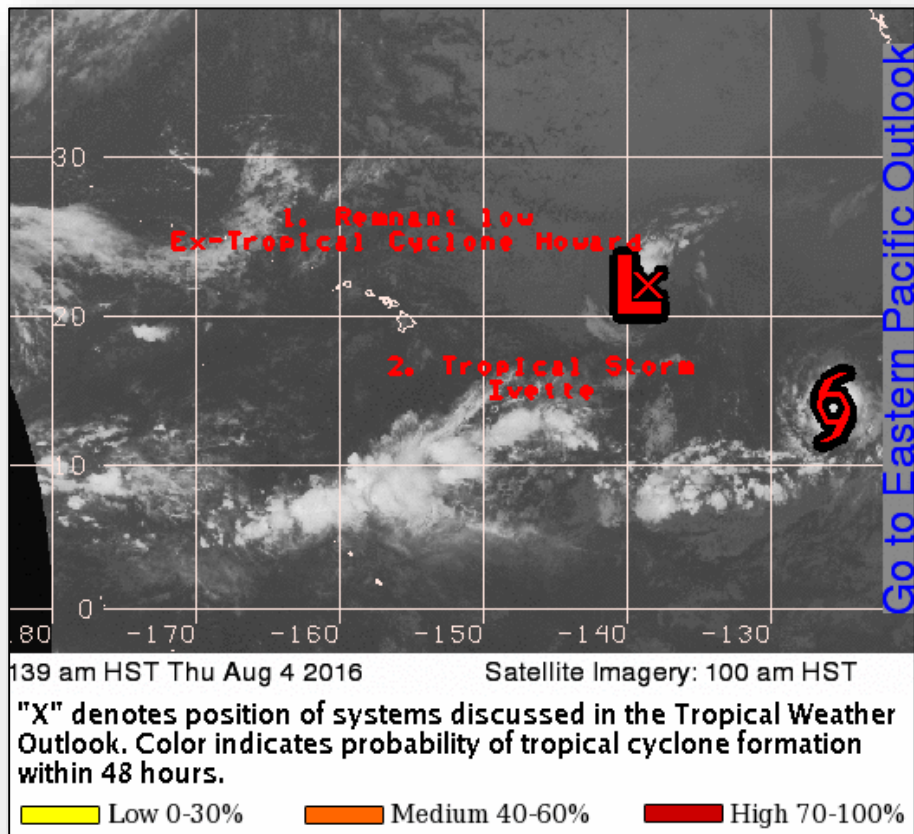
- Located 1,290 miles E of Hilo, HI
- Moving WNW at 16 mph
- Maximum sustained winds 35 mph
- Should gradually lose strength next few days
- This is last Public Advisory



## Tropical Storm Ivette: (Advisory #7 As of 5:00 a.m. EDT)

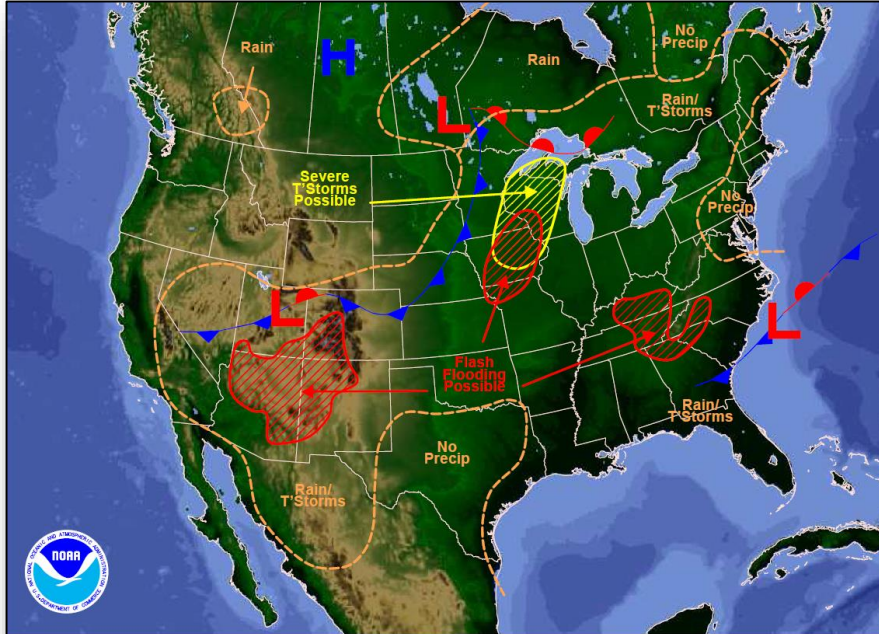
- Located 1,120 miles WSW of southern tip of Baja California, Mexico
- Moving W at 15 mph
- This motion with decrease in forward speed expected next couple of days
- Maximum sustained winds 45 mph
- Some gradual strengthening forecast next couple of days
- Could become a hurricane late Friday or Friday night
- Tropical storm force winds extend 80 miles

# Tropical Outlook - Central Pacific



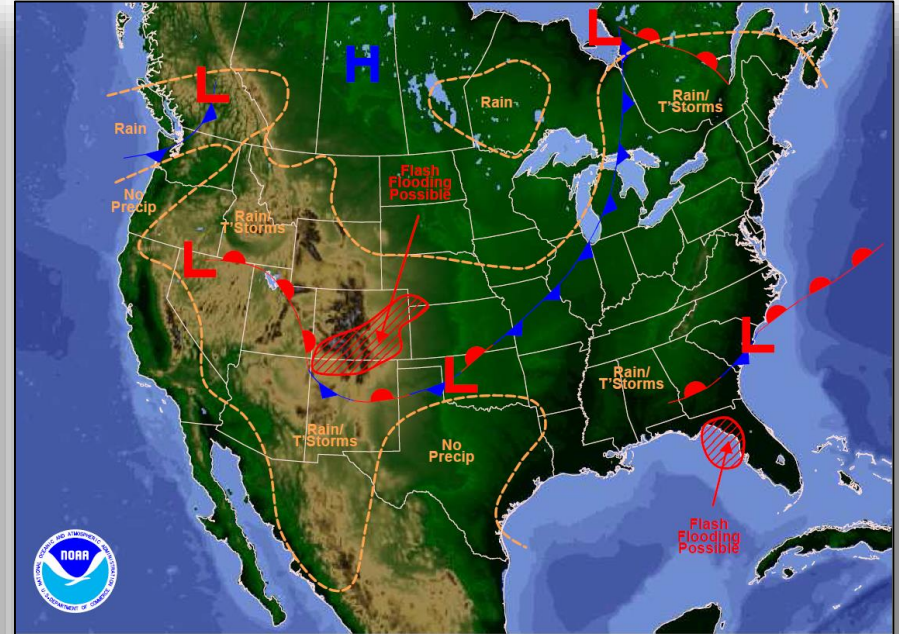


# National Weather Forecast



Weather Forecast for Thu, Aug 04, 2016, issued 4:46 AM EDT  
DOC/NOAA/NWS/NCEP/Weather Prediction Center  
Prepared by McCreynolds based on WPC, SPC and NHC forecasts

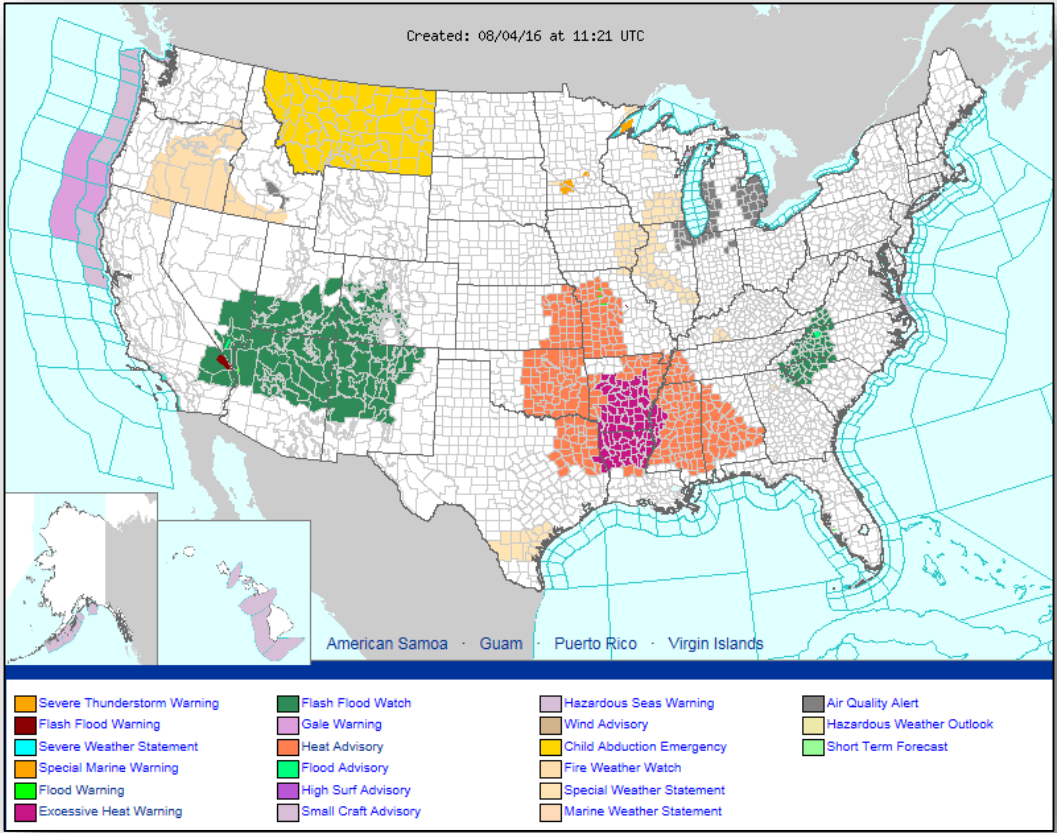
*Today*



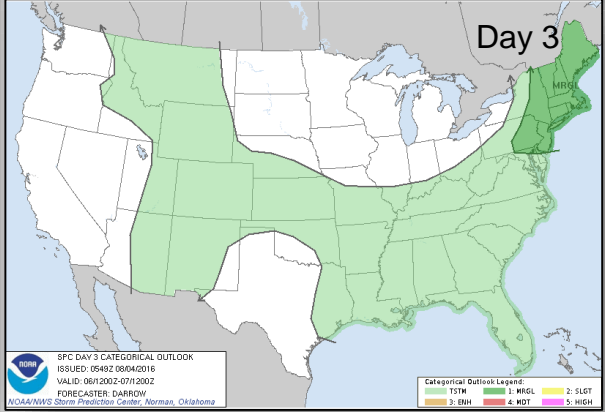
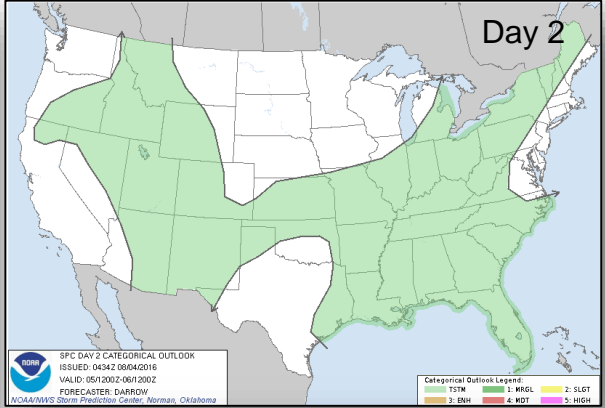
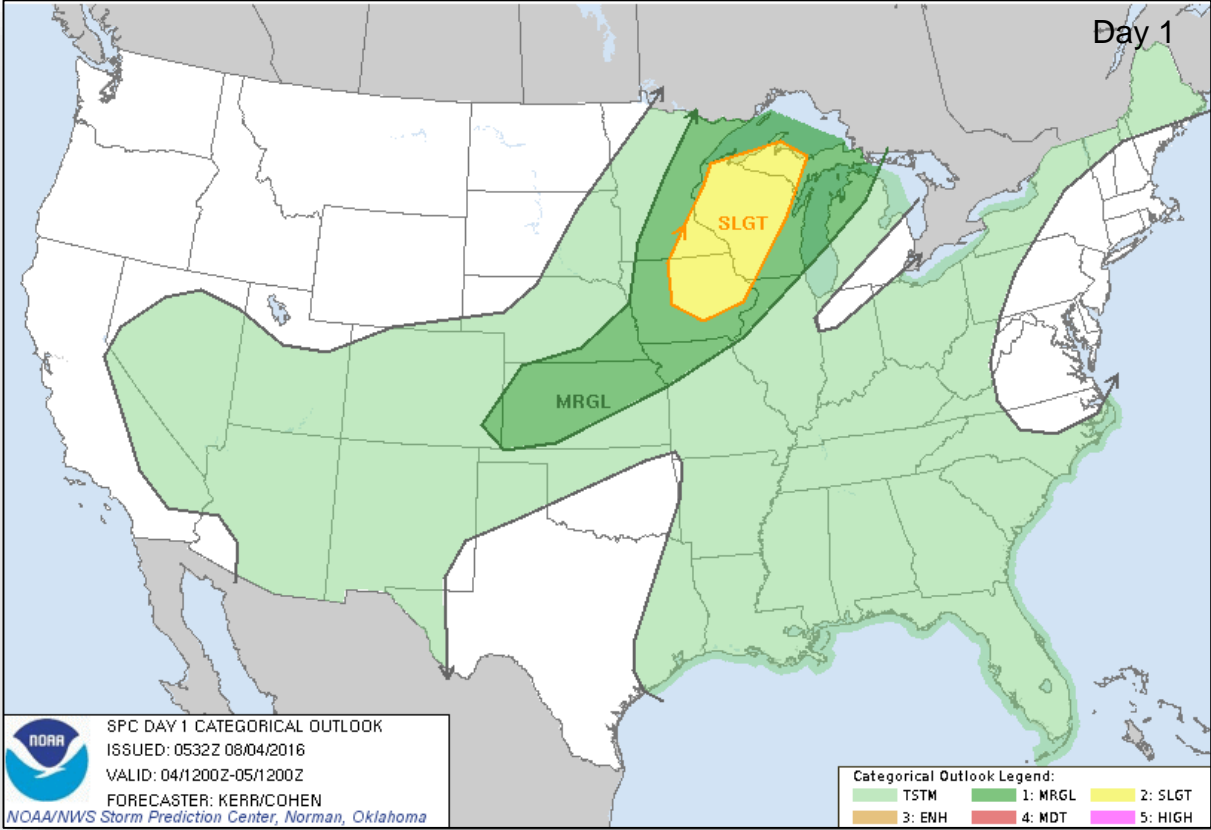
Weather Forecast for Fri, Aug 05, 2016, issued 4:50 AM EDT Thu, Aug 04, 2016  
DOC/NOAA/NWS/NCEP/Weather Prediction Center  
Prepared by McCreynolds based on WPC, SPC and NHC forecasts

*Tomorrow*

# Active Watches & Warnings



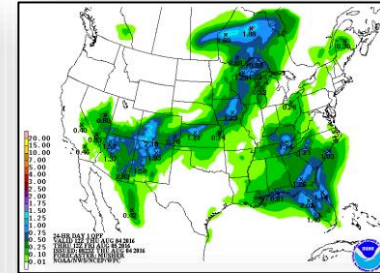
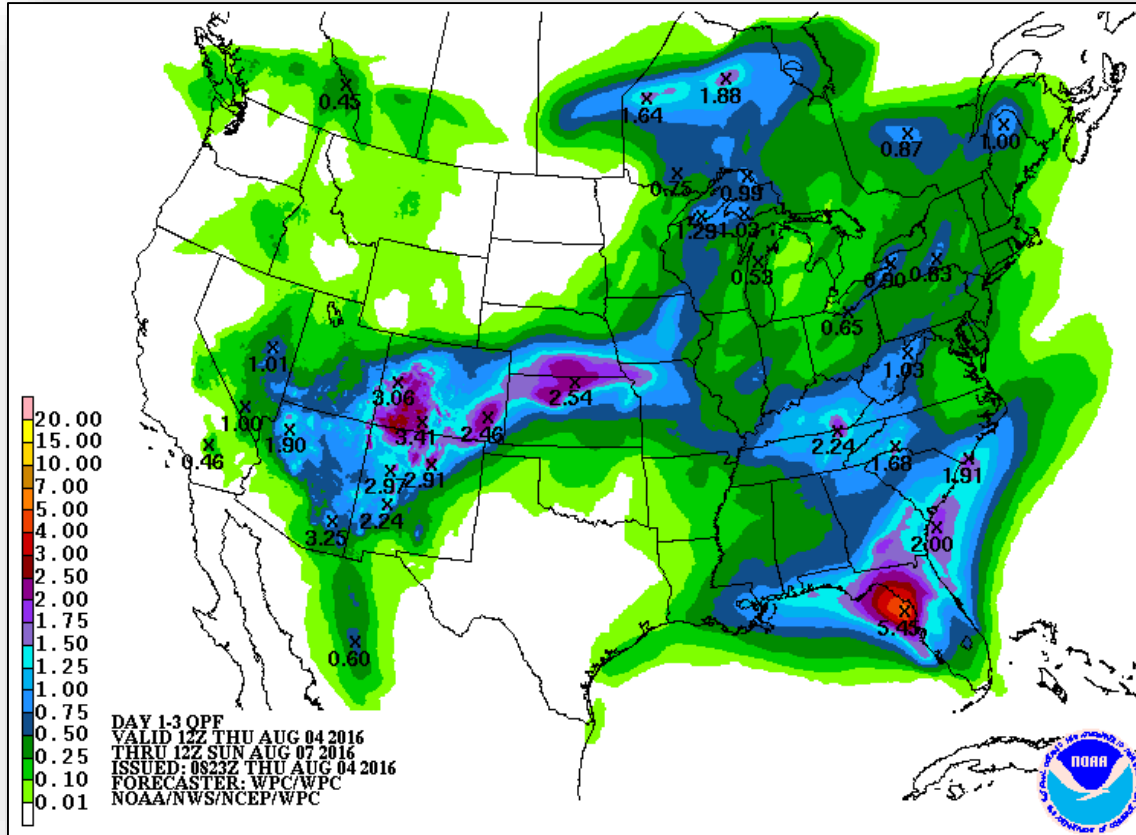
# Severe Weather Outlook - Days 1-3



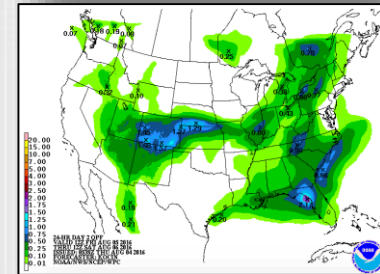
# Precipitation Forecast - Days 1-3



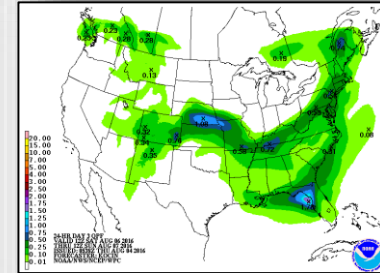
FEMA



Day 1

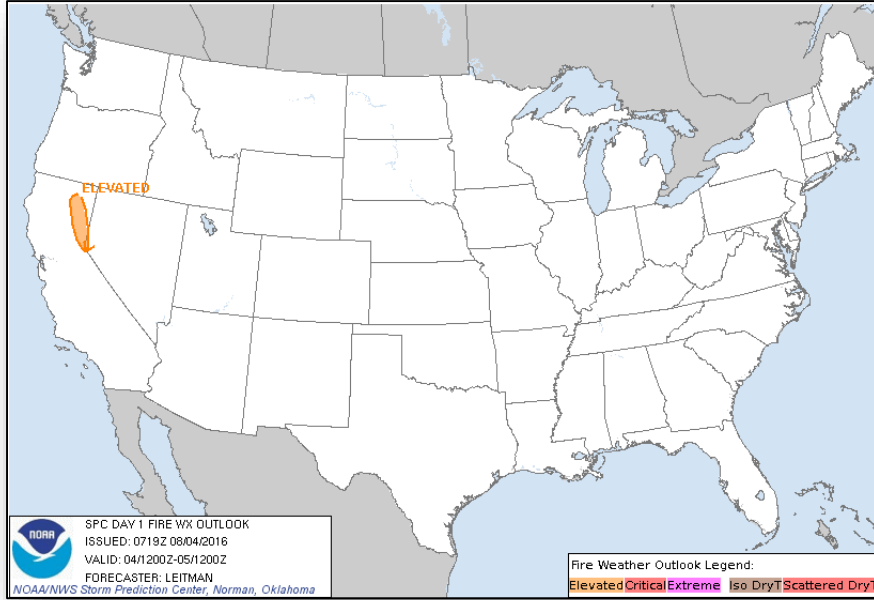


Day 2

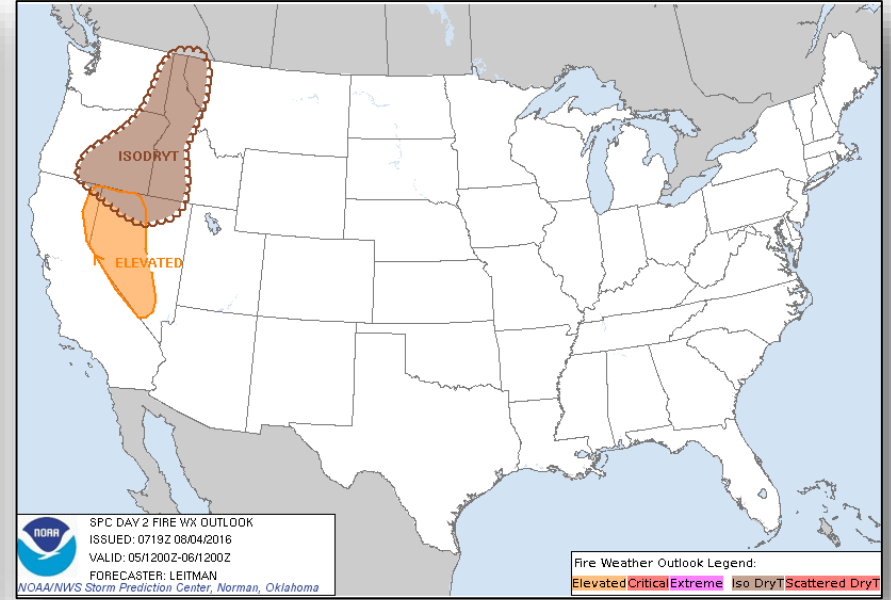


Day 3

# Fire Weather Outlook

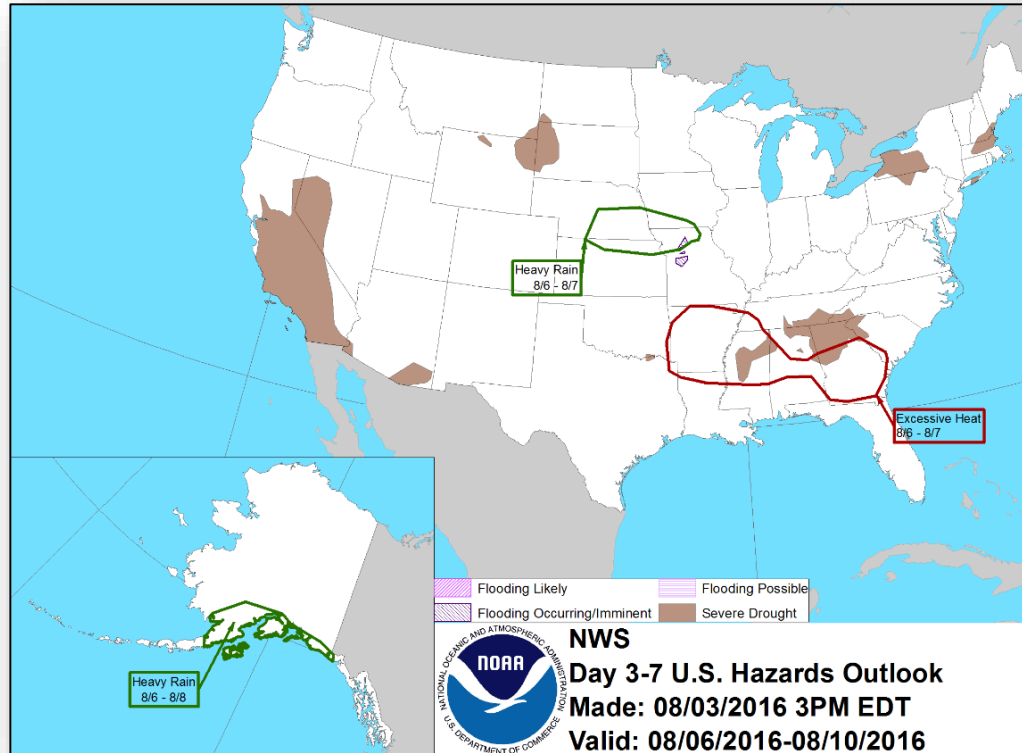


Day 1



Day 2

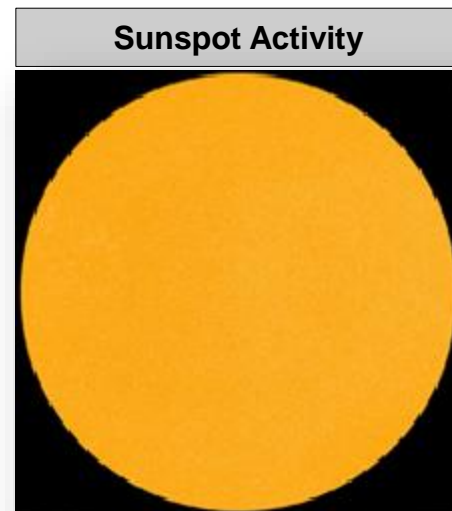
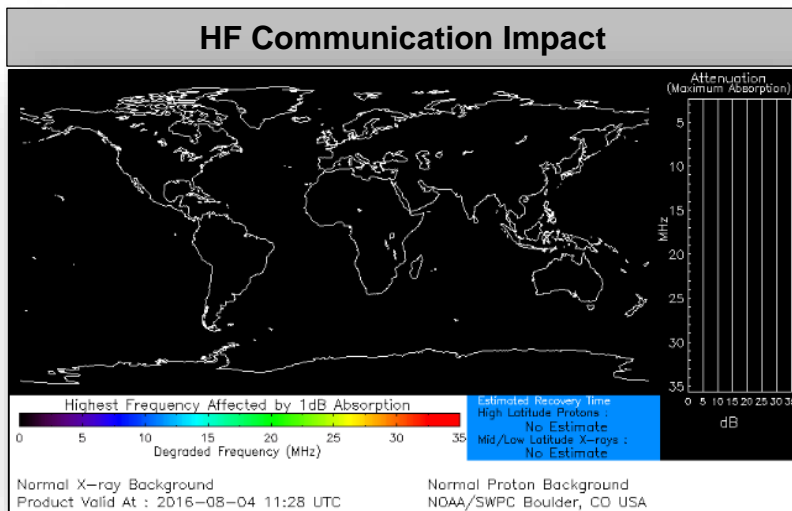
# Hazards Outlook - August 6 -10





# Space Weather

	Past 24 Hours	Current	Next 24 Hours
Space Weather Activity	Minor	None	None
Geomagnetic Storms	G1	None	None
Solar Radiation Storms	None	None	None
Radio Blackouts	None	None	None



# Wildfire Summary



Fire Name (County)	FMAG #	Acres burned	% Contained	Evacuations (Residents)	Structures Threatened	Structures Damaged / Destroyed	Fatalities / Injuries
<b>California (1)</b>							
Soberanes Fire (Monterey County)	FEMA-5137-FM-CA	46,700 (+2,400)	27% (+2)	Mandatory	2,000 homes	5 (3 homes) / 68 (57 homes)	1 / 1
<b>Nevada (1)</b>							
Virginia Mountains Complex <i>(FINAL)</i> (Washoe County)	FEMA-5141-FM-NV	59,727 (+5,802)	68% (+27)	Lifted	None	0 / 12 (6 homes)	0 / 3
<b>Washington (1)</b>							
South Ward Gap <i>(FINAL)</i> (Benton County)	FEMA-5142-FM-WA	5,000	40%	Lifted	100 homes	0 / 2 (no homes)	0 / 0
<b>Montana (1)</b>							
Roaring Lion Fire (Ravalli County)	FEMA-5143-FM-MT	7,129 (+2,737)	7% (+7)	Mandatory	2,347 (847 homes) (+347 homes)	0 / 64 (14 homes)	0 / 0



# Joint Preliminary Damage Assessments



Region	State / Location	Event	IA/PA	Number of Counties		Start – End
				Requested	Complete	
III	MD	Severe weather & heavy rains July 30, 2016	PA	1	0	8/4 – TBD
IV	KY	Severe storms, tornadoes, flooding & strong winds July 3-9, 2016	IA	2	1	8/2 – TBD
			PA	22 (-1)	7	8/2 – TBD

# Disaster Requests & Declarations



Declaration Requests in Process		Requests APPROVED (since last report)	Requests DENIED (since last report)
1	Date Requested	1	1
MT – DR Tornado	July 20, 2016	Declared August 3, 2016	
KS – DR Severe Storms, Tornadoes, and Flooding	July 21, 2016		Denied August 3, 2016
WI – DR Severe Storms and Flooding	August 3, 2016		

# Major Disaster Declaration Approved- MT



## FEMA-4275-DR-MT

- Major Disaster Declaration approved August 3, 2016 for state of Montana for a tornado that occurred June 11, 2016
- Provides:
  - Public Assistance for Fallon County
  - Hazard Mitigation statewide
- FCO is Nancy M. Casper

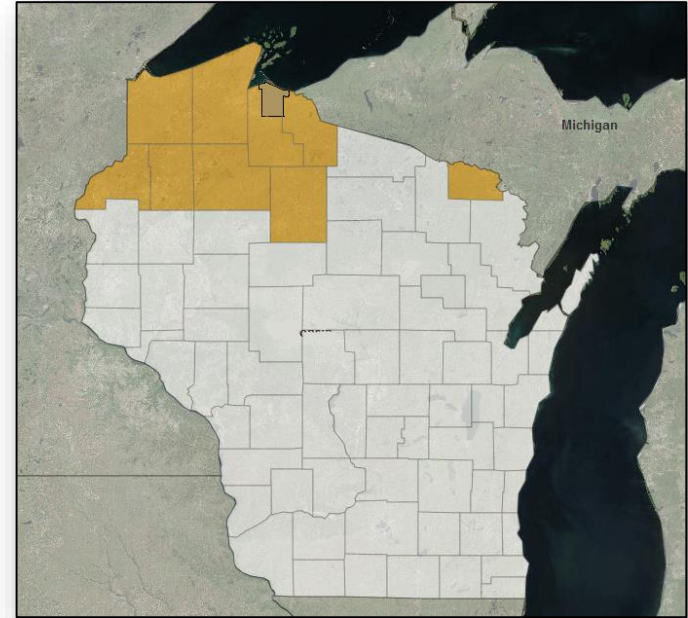


# Major Disaster Declaration Request – WI

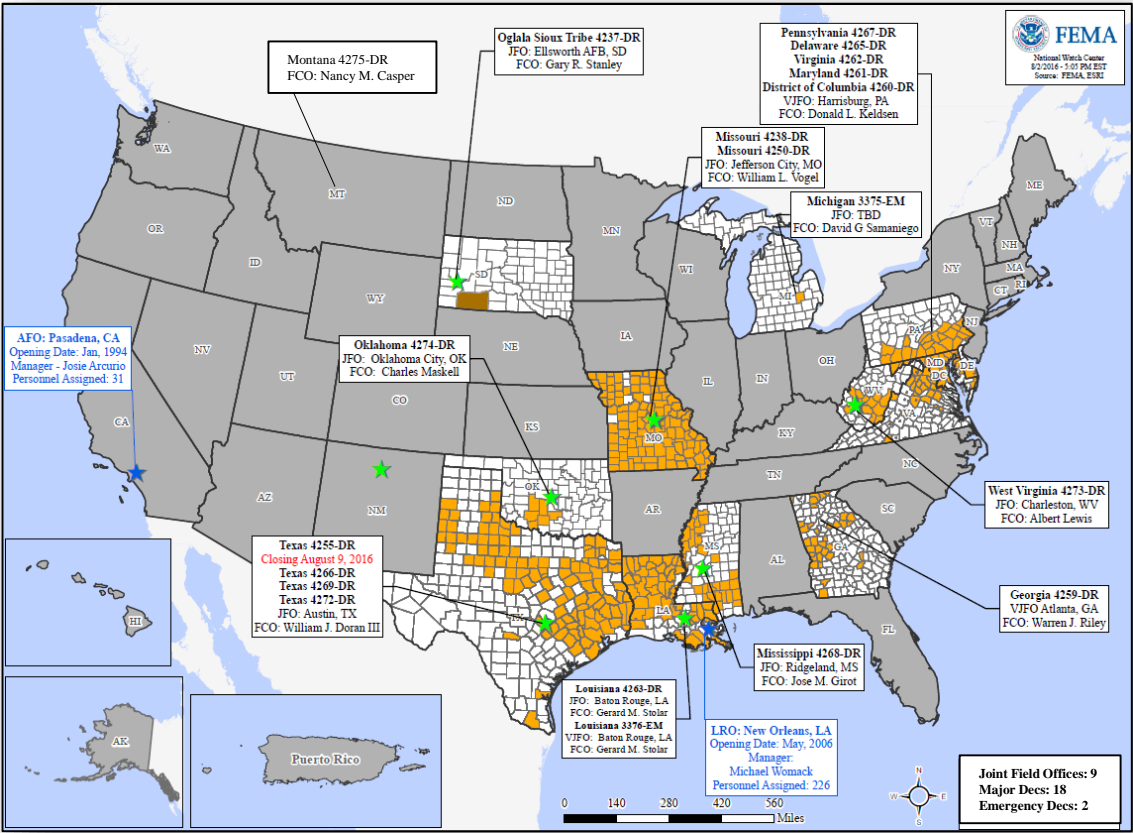


August 3, 2016

- Request for Major Disaster Declaration for state of Wisconsin for severe storms and flooding during the period of July 11-12, 2016
- Requesting:
  - Public Assistance for 9 counties & 1 tribe
  - Hazard Mitigation statewide



# Open Field Offices as of August 4, 2016



# FEMA Readiness: Deployable Teams & Assets



Deployable Teams & Assets									
Resource	Status	Total	FMC Available		Partially Available	Not Available	Detailed, Deployed, Activated	Comments	Rating Criterion
FCO	Yellow	37	11	30%	0	3	23		OFDC Readiness: FCO Green Yellow Red Type 1 3+ 2 1 Type 2 4+ 3 2 Type 3 4 3 2 FDRC 3 2 1
FDRC	Yellow	10	4	40%	0	0	6		
US&R	Green	28	27	96%	1	0	0	NJ-TF1 Partially Mission Capable	<ul style="list-style-type: none"> <li>Green = Available/FMC</li> <li>Yellow = Available/PMC</li> <li>Red = Out-of-Service</li> <li>Blue = Assigned/Deployed</li> </ul>
National IMAT	Green	3	3	100%	0	0	0	East 2: Primary (On Call)	<ul style="list-style-type: none"> <li>Green: 3 available</li> <li>Yellow: 1-2 available</li> <li>Red: 0 avail (<i>Individual N-IMAT red if 50% of Section Chiefs and/or Team Leader is unavailable for deployment.</i>)</li> </ul>
Regional IMAT	Green	13	10	77%	0	2	1	<u>Deployed:</u> Region I: Reconstituting (FMC – Aug 15, 2016) Region III: WV (4273-WV) Region VII: Reconstituting (FMC – Aug 7, 2016)	<ul style="list-style-type: none"> <li>Green: &gt;6 teams available</li> <li>Yellow: 4 - 6 teams available</li> <li>Red: &lt; 4 teams available</li> </ul> R-IMAT also red if TL Ops/Log Chief is unavailable & has no qualified replacement
MERS Teams	Green	18	18	100%	0	0	0	<u>Deployed:</u> None	<ul style="list-style-type: none"> <li>Green = &gt;66% available</li> <li>Yellow = 33% to 66% available</li> <li>Red = &lt;33% available</li> </ul>

# FEMA Readiness: National & Regional Teams



National/Regional Teams									
Resource	Status	Total	FMC Available		Partially Available	Not Available	Status	Comments	Rating Criterion
NWC		5	5	100%	0	0	Not Activated		<ul style="list-style-type: none"> <li>• Green = FMC</li> <li>• Yellow = PMC</li> <li>• Red = NMC</li> </ul>
NRCC		2	2	100%	0	0	Not Activated		
HLT		1	1	100%	0	0	Activated		
DEST							Not Activated		
RRCCs		10	10	100%	0	0	Not Activated		
RWCs/MOCs		10	10	100%	0	0	Not Activated		



# FEMA

**FEMA's mission is to support our citizens and first responders to ensure that as a nation we work together to build, sustain, and improve our capability to prepare for, protect against, respond to, recover from, and mitigate all hazards.**