

The Disaster Center is dedicated to the idea that disaster mitigation is cost effective and individuals pursuing their own interest are the greatest potential force for disaster reduction.

Please consider making a small donation to the Disaster Center



When disaster mitigation is cost effective, we are on the road to bringing disasters to an end.



FEMA

Daily Operations Briefing

Monday, July 25, 2016

8:30 a.m. EDT

Significant Activity: July 24 – 25



Significant Events: Democratic National Convention

Tropical Activity:

- Atlantic – Tropical Cyclone activity not expected next 48 hours
- Eastern Pacific – Hurricane Georgette; Tropical Storm Frank
- Central Pacific – Tropical Storm Darby
- Western Pacific – No activity threatening U.S. territories

Significant Weather:

- Rain and thunderstorms – Northern Plains, Southwest to Southern/Central Plains, Upper/Middle Mississippi Valleys and Great Lakes, Lower Mississippi Valley to the Southeast, Ohio Valley and Mid-Atlantic and Northeast
- Red Flag Warnings – WY
- Excessive Heat Warnings – OH and NJ
- Space Weather – Minor space weather observed in the past 24 hours, R1 level radio blackouts and G1 geomagnetic storms occurred; nothing predicted next 24 hours

Earthquake Activity: None

Wildfire Activity: No significant activity

Declaration Activity: None

Democratic National Convention

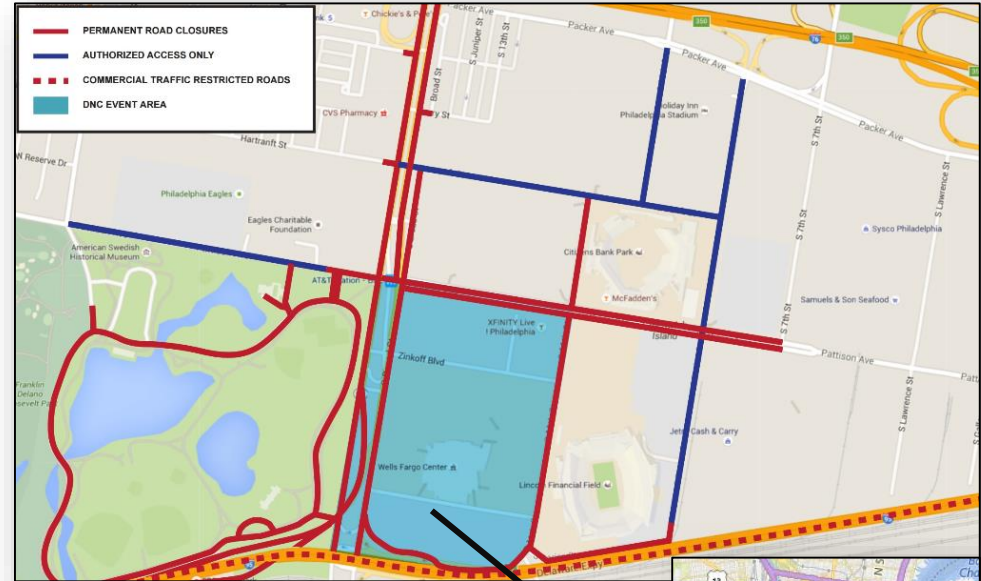


Current Situation

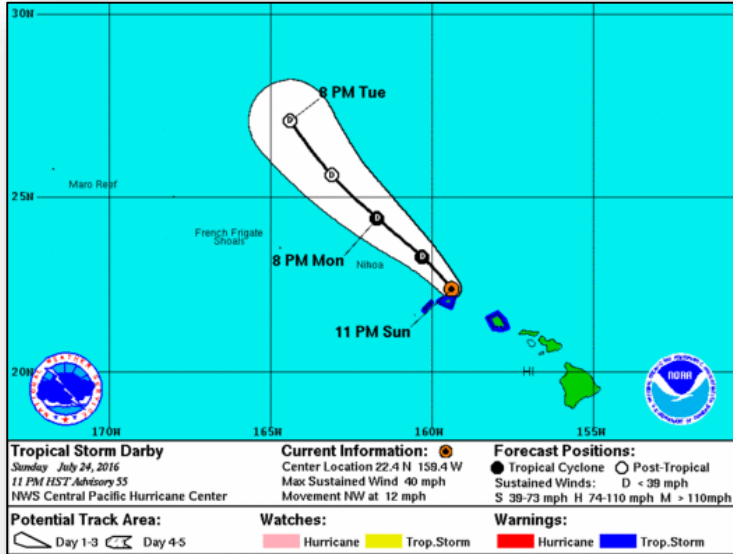
- July 25-28, 2016 Philadelphia, PA (USNG 18SVK85308)
- Designated a National Special Security Event (NSSE)
- Estimated attendance: 50,000

State/Federal Response

- PA EOC at Partial Activation
- FEMA Region III RRCC at Partial Activation (2:00 pm – 12:00 am EDT)
- FEMA Region III IMAT and LNOs deployed to PA EOC
- NWC at Enhanced Watch (3:00 pm – 12:00 am EDT)
- FEMA NRCC and ESFs on Alert
- National IMAT-West on Immediate Standby; National IMAT East-2 is Backup
- USAR issued ESF-9 Advisory
- PA-TF1 locally tasked for DNC Operations
- MERS providing interoperable communications, network operations, and command post function support



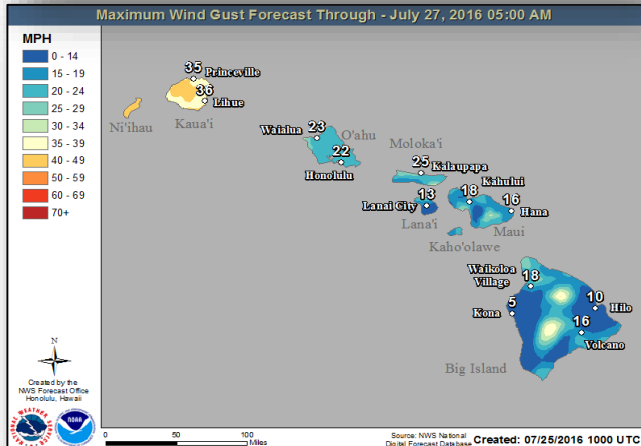
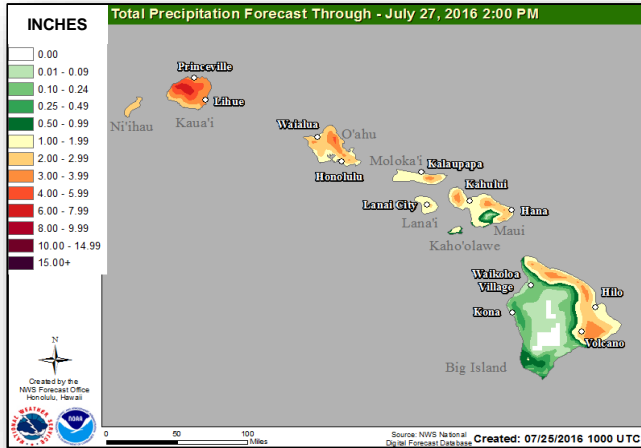
Central Pacific – Tropical Storm Darby



Tropical Storm Darby: (Advisory #55A as of 8:00 a.m. EDT)

- Located 65 miles WNW of Lihue, HI & 165 miles WNW of Honolulu, HI
- Moving WNW at 12 mph; maximum sustained winds 40 mph
- Motion expected to continue over the next couple of days
- Some weakening forecast during the next 48 hours
- Darby expected to weaken to a tropical depression today, and become a post tropical remnant low by Tuesday
- Tropical-storm-force winds extend 90 miles
- Additional rainfall amounts of 2-4 inches, with isolated maximum amounts of 5 inches possible; flash flooding & landslides possible
- There are no coastal watches or warnings in effect

Central Pacific – Tropical Storm Darby



Impacts:

- No injuries/fatalities reported
- Big Island port open; Oahu & Kauai ports remain closed
- Airports open
- Minor road blockages reported on Maui county
- Minimal power outages: 140 customers statewide without power, down from peak of 3,400 (*Region 9 report as of 3:20 am EDT*)
- 7 shelters open with 233 occupants (*ARC report as of 7:53 am EDT*)

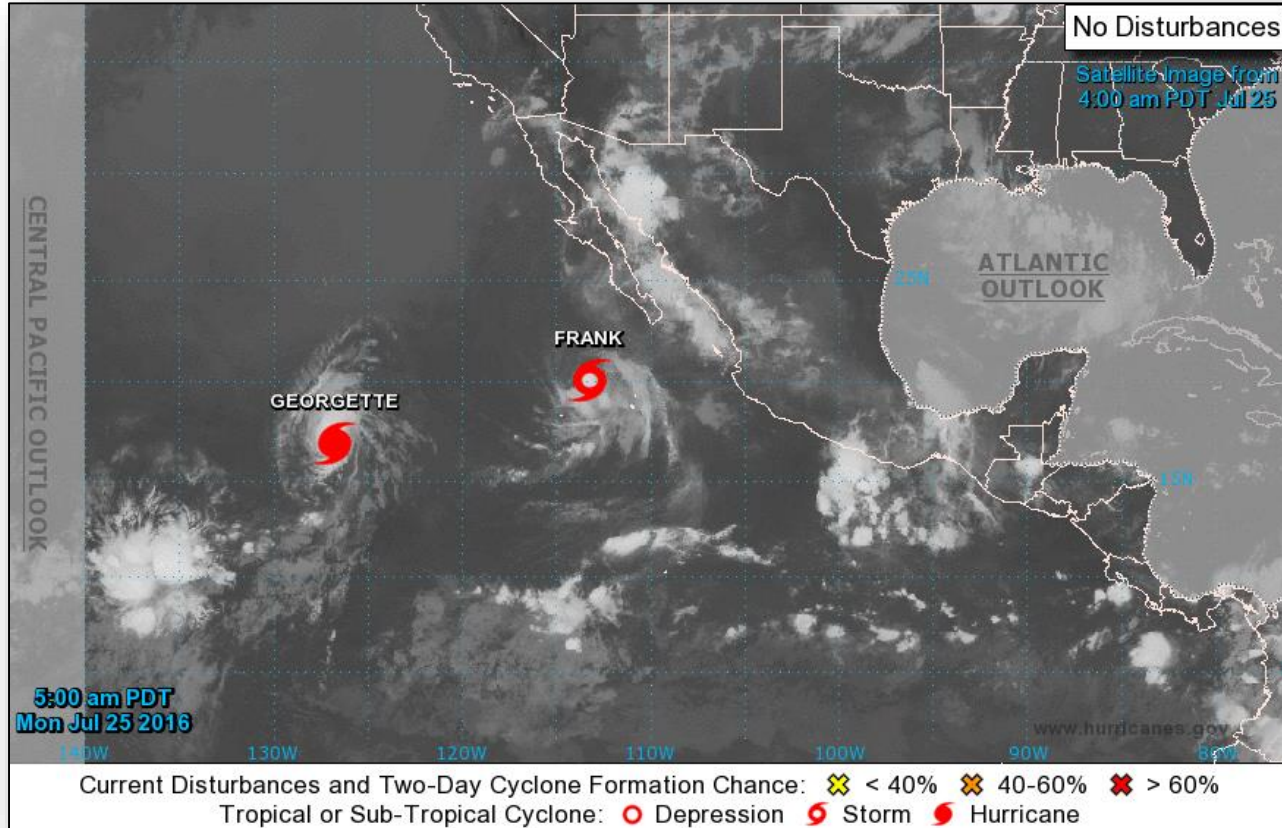
State/Federal Response:

- Governor declared State of Emergency
- HI EOC at Partial Activation
- HI National Guard activated for possible damage assessments
- Region IX IMAT at HI EOC and LNOs deployed to Hawaii, Maui, and Kauai County EOCs
- Region IX RRCC not activated; RWC at Watch/Steady State
- No requests for FEMA assistance

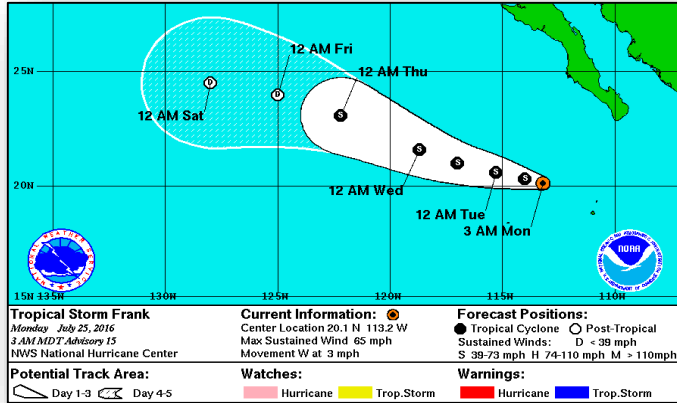
Tropical Outlook - Eastern Pacific



FEMA

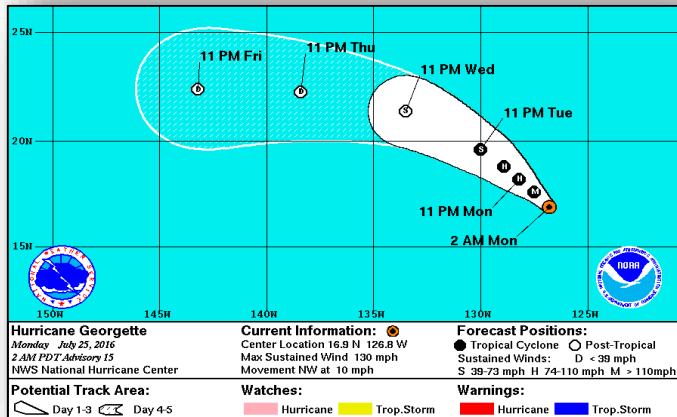


Tropical Outlook – Eastern Pacific



Tropical Storm Frank: (Advisory #15 as of 5:00 a.m. EDT)

- Located 285 miles SW of southern tip of Baja California Mexico
- Moving W at 3 mph; maximum sustained winds 65 mph
- WNW motion at a faster speed expected over the next couple 48 hours
- Some strengthening possible during the next day or so
- Tropical storm force winds extend 80 miles
- No coastal watches or warnings in effect



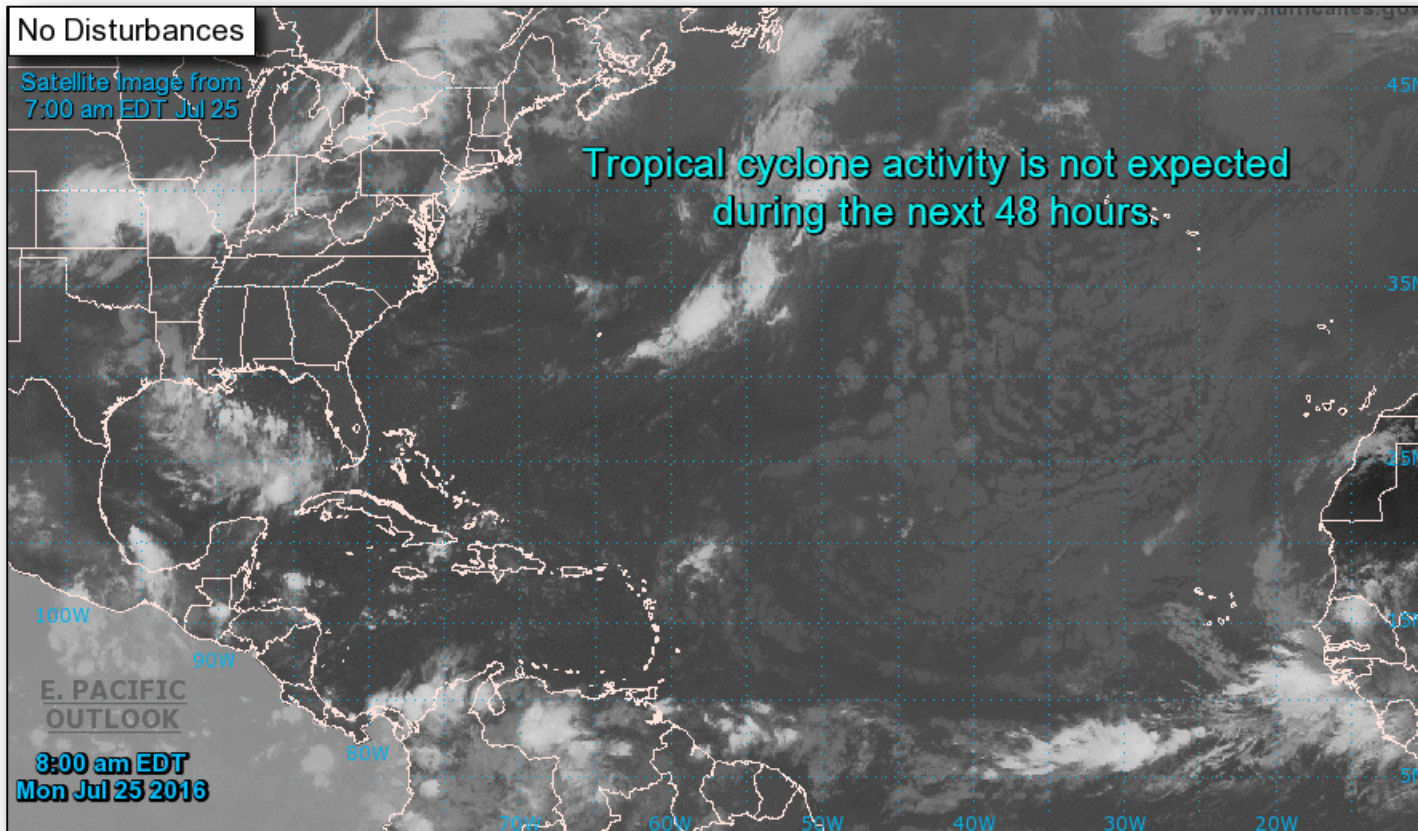
Hurricane Georgette (Category 4): (Advisory #15 as of 5:00 a.m. EDT)

- Located 1,170 miles WSW of southern tip of Baja California Mexico
- Moving NW at 10 mph; maximum sustained winds 130 mph
- Decrease in forward speed expected during the next couple of days
- Weakening expected over the next 48 hours; likely to fall below hurricane strength Wednesday
- Hurricane-force winds extend 25 miles; tropical-storm force winds extend 45 miles
- No coastal watches and warning in effect

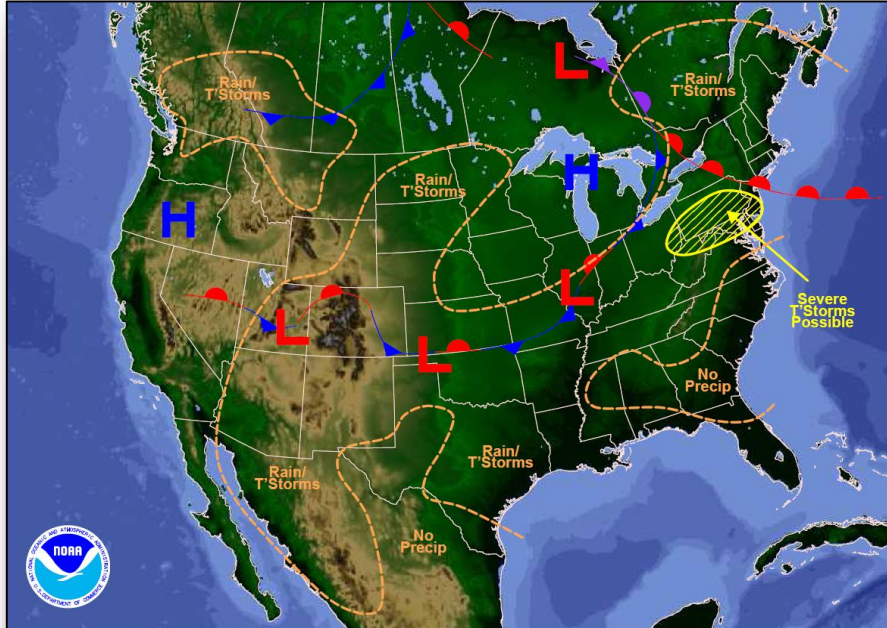
Tropical Outlook - Atlantic



FEMA

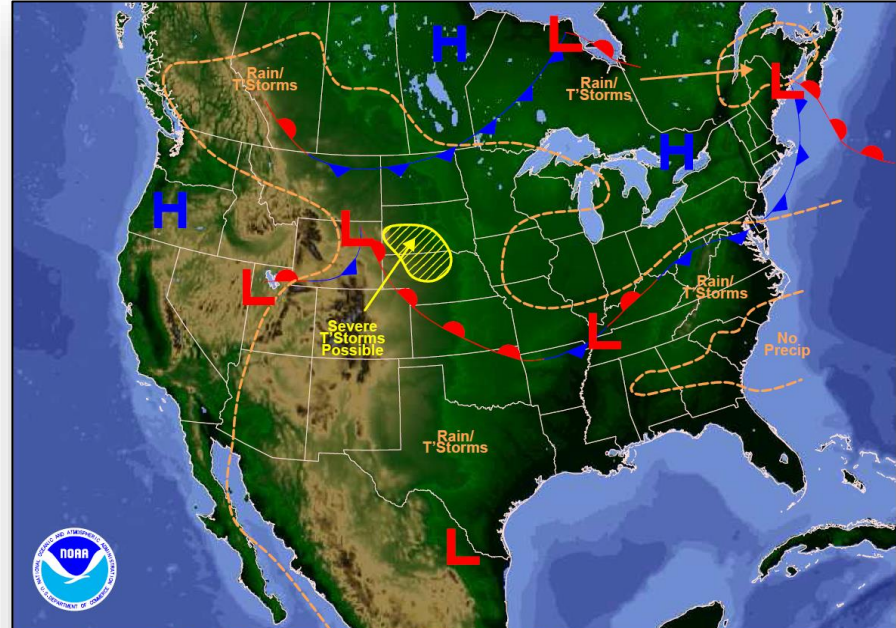


National Weather Forecast



Weather Forecast for Mon, Jul 25, 2016, issued 4:21 AM EDT
DOC/NOAA/NWS/NCEP/Weather Prediction Center
Prepared by McCreynolds based on WPC, SPC and NHC forecasts

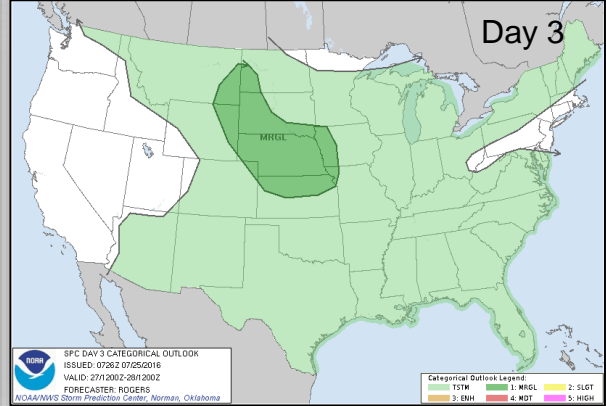
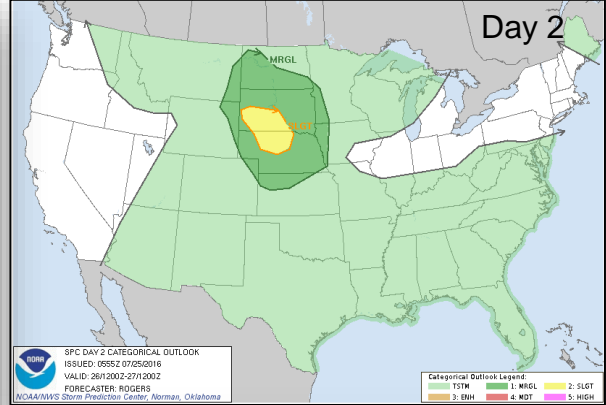
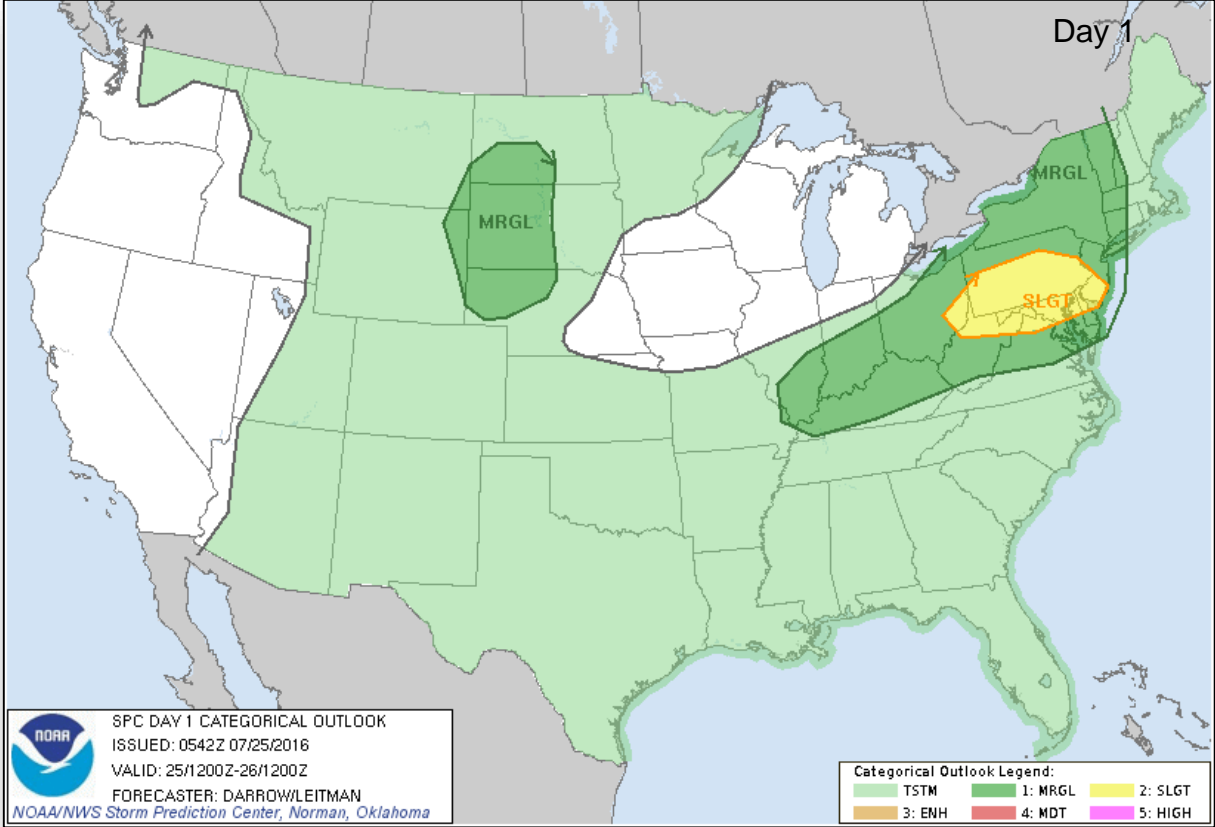
Today



Weather Forecast for Tue, Jul 26, 2016, issued 4:28 AM EDT Mon, Jul 25, 2016
DOC/NOAA/NWS/NCEP/Weather Prediction Center
Prepared by McCreynolds based on WPC, SPC and NHC forecasts

Tomorrow

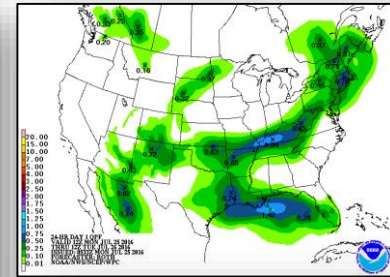
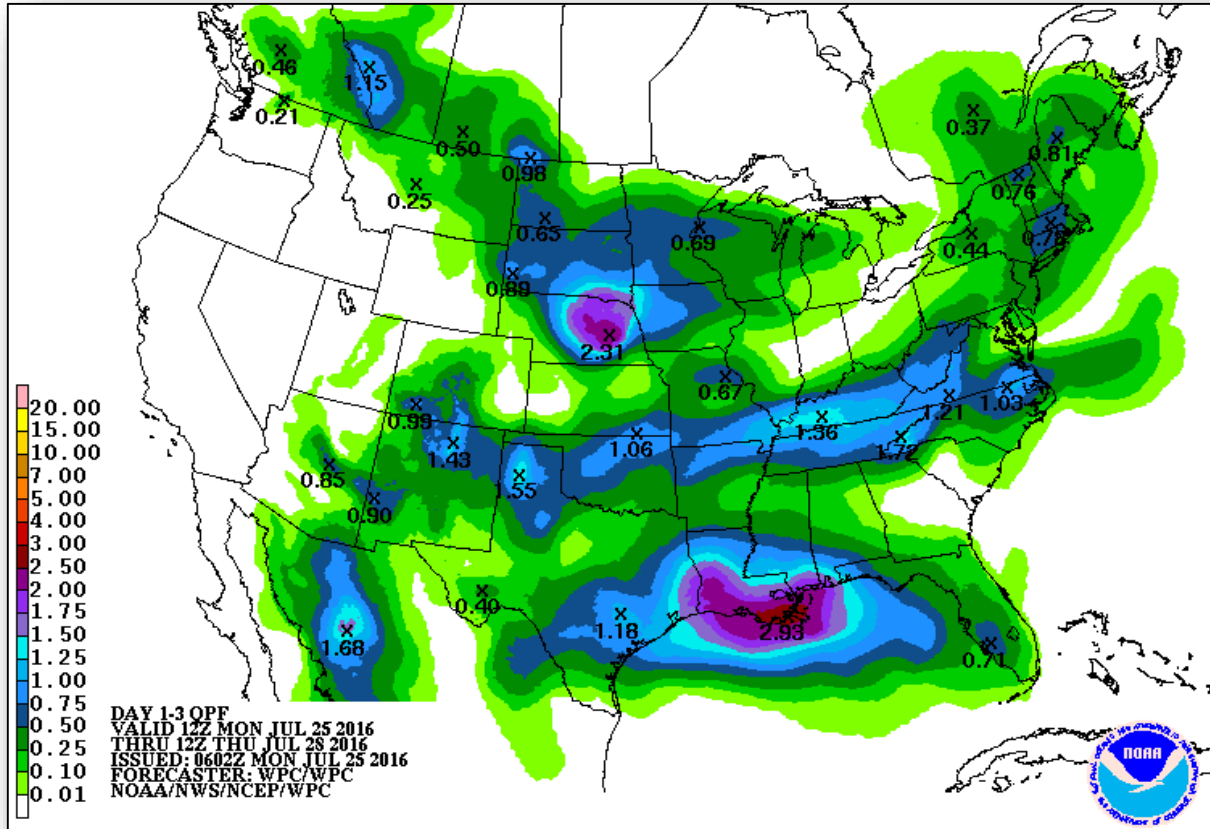
Severe Weather Outlook – Days 1-3



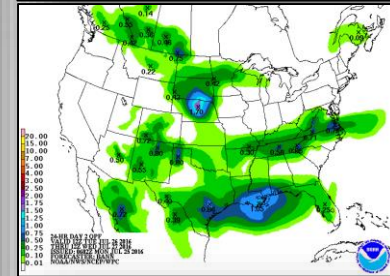
Precipitation Forecast – Days 1-3



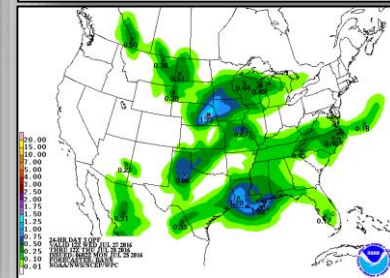
FEMA



Day 1

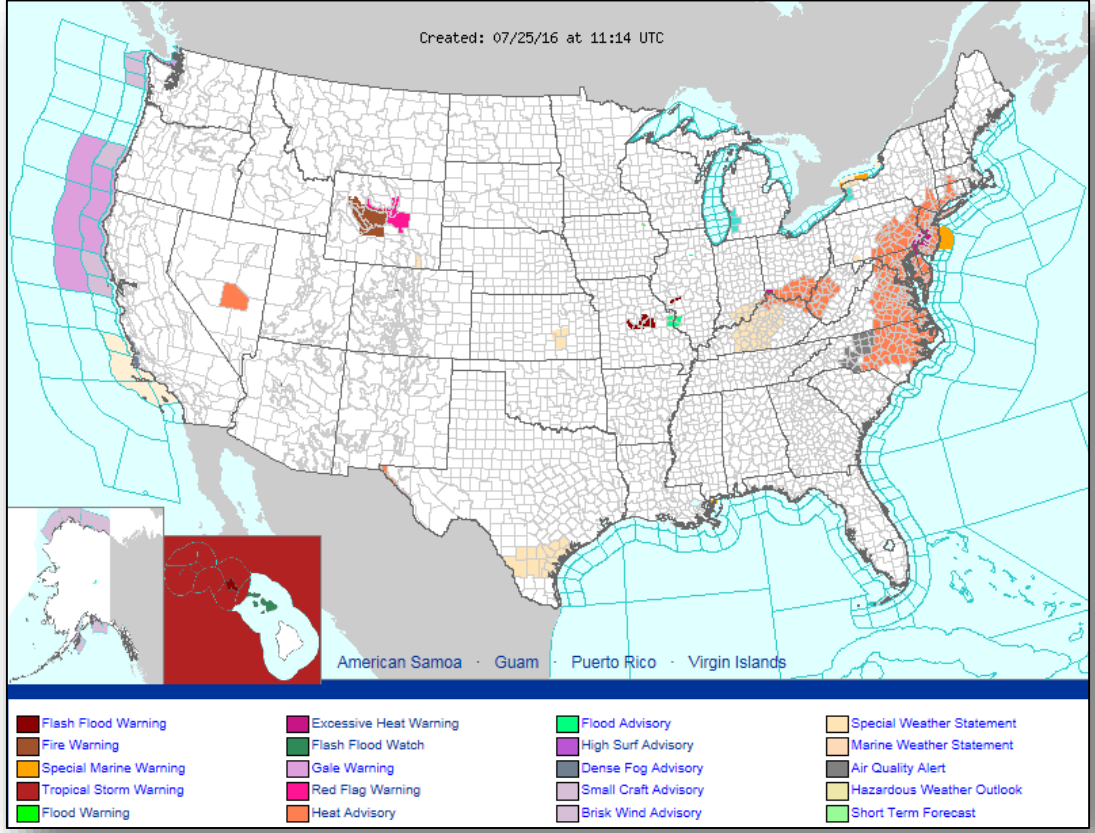


Day 2



Day 3

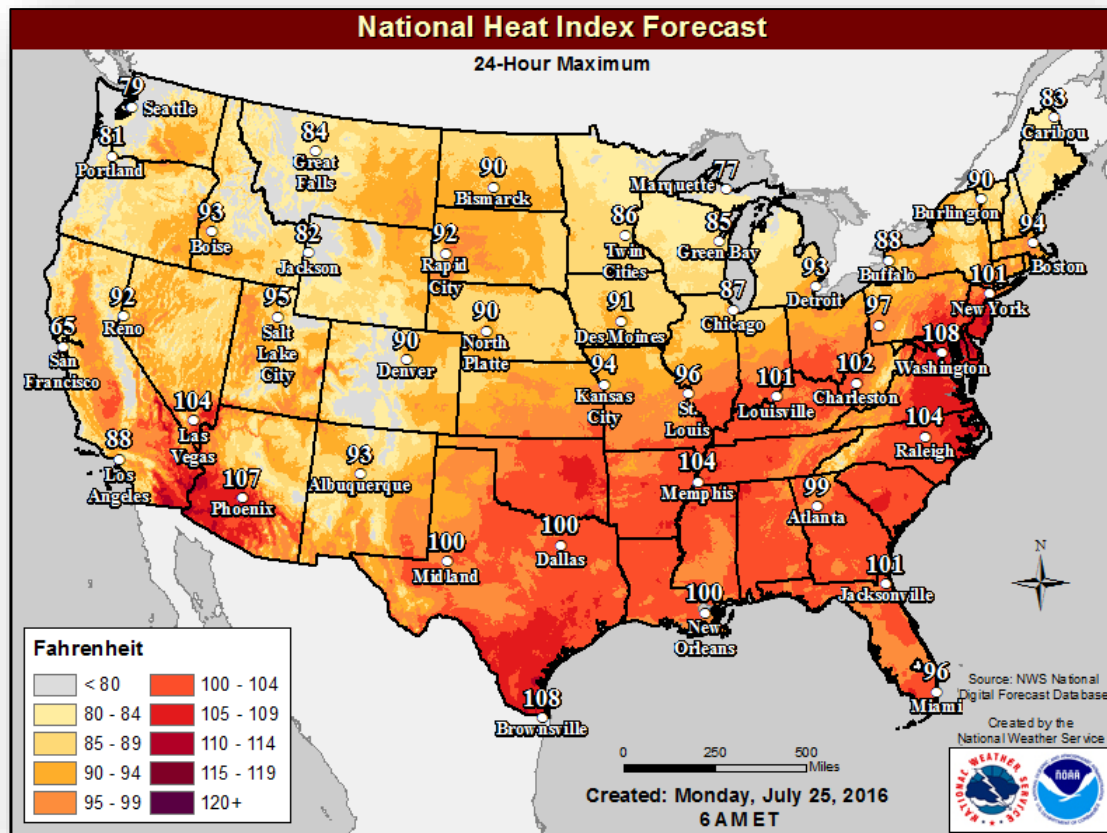
Active Watches & Warnings



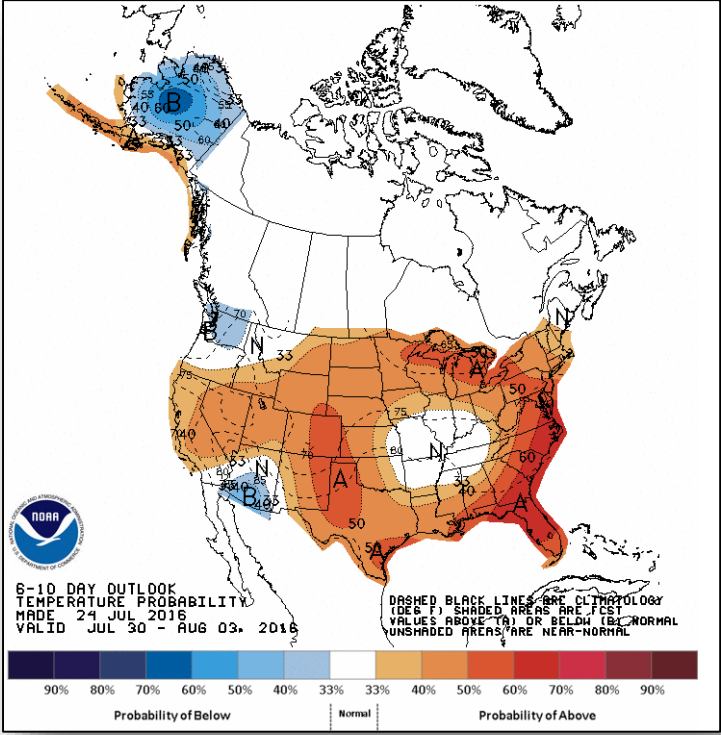
Prolonged Heat Wave



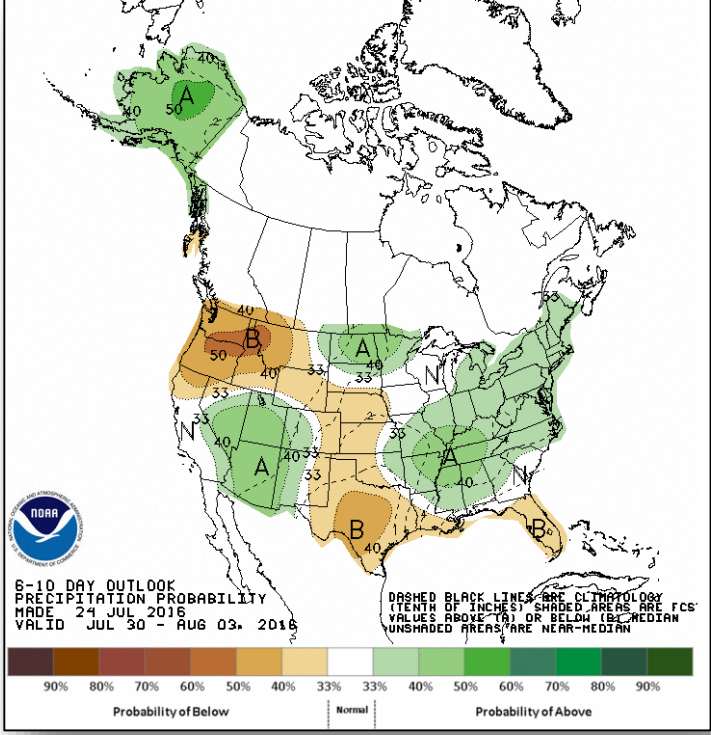
FEMA



6 - 10 Day Outlooks



6 - 10 Day Temperature Probability

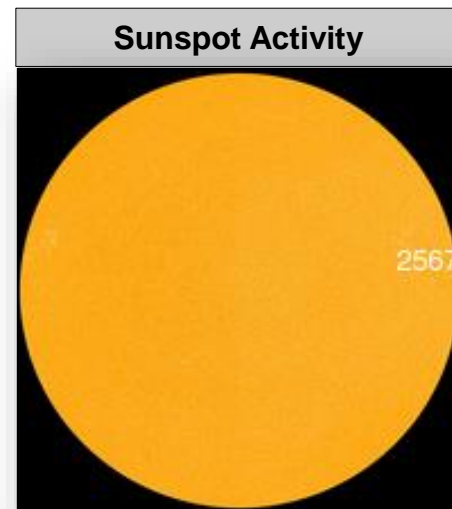
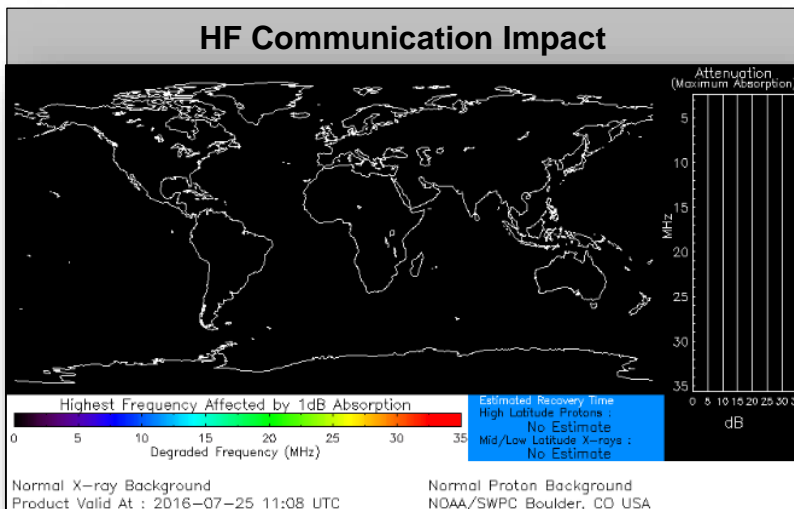


6 - 10 Day Precipitation Probability



Space Weather

	Past 24 Hours	Current	Next 24 Hours
Space Weather Activity	Minor	None	None
Geomagnetic Storms	G1	None	None
Solar Radiation Storms	None	None	None
Radio Blackouts	R1	None	None



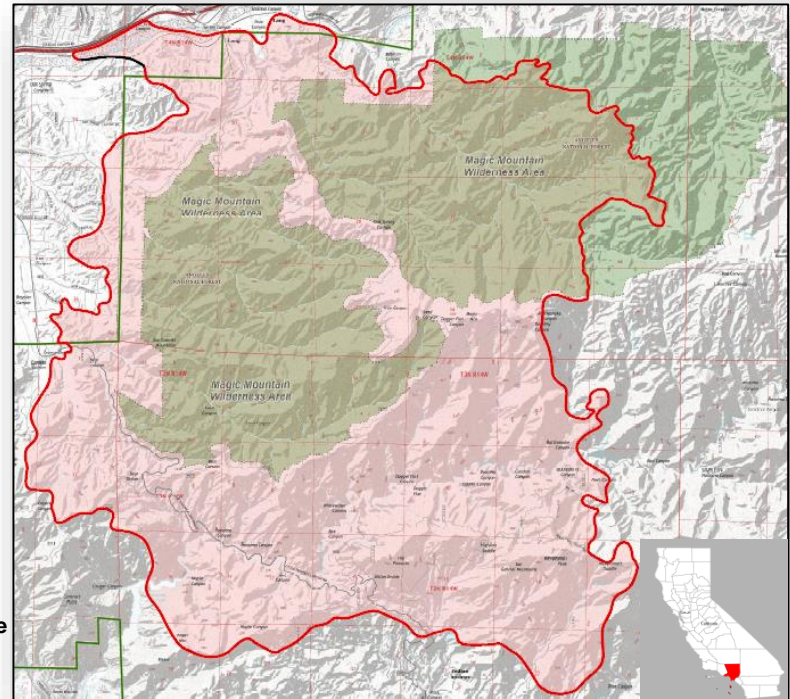
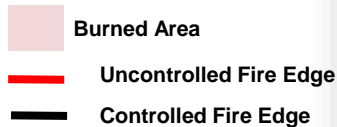
Sand Fire – California



Fire Name	Location	Acres burned	% Contained	Est. Full Containment	FMAG	Structures Lost / Threatened	Fatalities / Injuries
Sand	Los Angeles County, CA (5 miles north of Los Angeles)	33,172	10%	July 29	Approved July 23	18 / 10,000 homes	1 / 2

Current Situation

- Fire began on July 22 and has burned over 20k acres of Federal, State, County, and private land
- FMAG approved July 23
- Estimated population threatened: 45K
 - Communities threatened include Sylmar, Lancaster, Pacoima, Placerita, Sand Canyon, and Aqua Dulce
- Mandatory evacuations in effect for 1,500 homes
- 2 shelters open with 65 occupants *(ARC Midnight Shelter Report)*



Joint Preliminary Damage Assessments



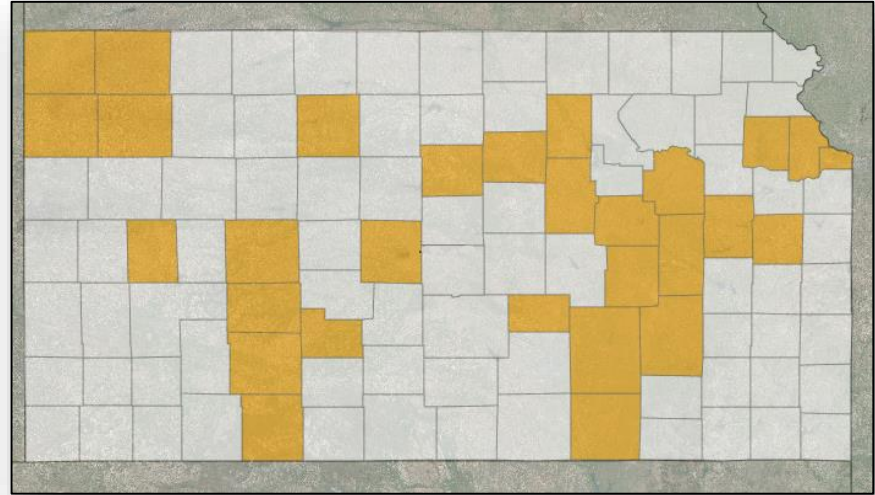
Region	State / Location	Event	I/PA	Number of Counties		Start – End
				Requested	Complete	
V	WI	Severe Storms & Flooding July 11 -12, 2016	PA	8 counties 2 tribes	0 0	7/25 – TBD

Major Disaster Declaration Request – KS



July 21, 2016

- Request for Major Disaster Declaration for severe storms, tornadoes & flooding during the period of May 22-31, 2016
- Requesting:
 - Public Assistance for 29 counties
 - Hazard Mitigation statewide

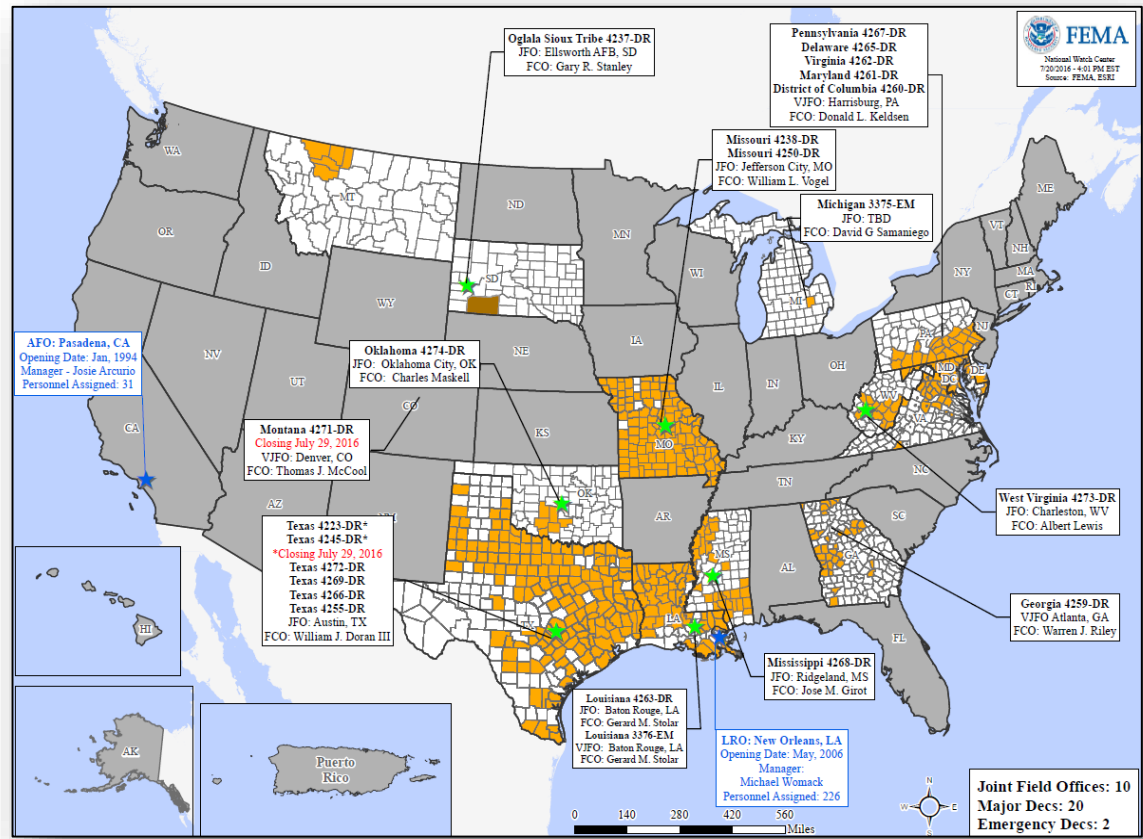


Disaster Requests & Declarations



Declaration Requests in Process		Requests APPROVED (since last report)	Requests DENIED (since last report)
2	Date Requested	0	1
CA – DR Fire	July 15, 2016		Denied July 22, 2016
MT – DR Tornado	July 20, 2016		
KS – DR Severe Storms, Tornadoes, and Flooding	July 22, 2016		

Open Field Offices as of July 25, 2016



FEMA Readiness - Deployable Teams & Assets



Deployable Teams & Assets									
Resource	Status	Total	FMC Available		Partially Available	Not Available	Detailed, Deployed, Activated	Comments	Rating Criterion
FCO		37	11	30%	0	2	24		OFDC Readiness: FCO Green Yellow Red Type 1 3+ 2 1 Type 2 4+ 3 2 Type 3 4 3 2 FDRC 3 2 1
FDRC		9	2	22%	0	1	6		
US&R		28	26	93%	1	0	1	NJ-TF1 Partially Mission Capable PA-TF1 Red NMC for Federal Service (tasked locally for DNC operations through July 29)	<ul style="list-style-type: none"> Green = Available/FMC Yellow = Available/PMC Red = Out-of-Service Blue = Assigned/Deployed
National IMAT		3	3	100%	0	0	0	West: Primary (On Call)	<ul style="list-style-type: none"> Green: 3 available Yellow: 1-2 available Red: 0 avail (<i>Individual N-IMAT red if 50% of Section Chiefs and/or Team Leader is unavailable for deployment.</i>)
Regional IMAT		13	7	54%	0	0	6	Region II: Returned from MD Region V: Returned from OH <u>Deployed:</u> Region I: WV (4273-WV) Region III: WV (4273-WV) Region IV: Team 1 to WV (4273-WV) Region VI: Team 1 to TX (4266-TX) Region VII: TX (4272-TX) Region IX: Team 2 to HI (TS Darby)	<ul style="list-style-type: none"> Green: >6 teams available Yellow: 4 - 6 teams available Red: < 4 teams available <i>R-IMAT also red if TL Ops/Log Chief is unavailable & has no qualified replacement</i>
MERS Teams		18	16	85%	0	0	2	<u>Deployed:</u> Denton: 2 teams to TX (4272-TX)	<ul style="list-style-type: none"> Green = >66% available Yellow = 33% to 66% available Red = <33% available

FEMA Readiness - National & Regional Teams



National/Regional Teams									
Resource	Status	Total	FMC Available		Partially Available	Not Available	Status	Comments	Rating Criterion
NWC		5	5	100%	0	0	Watch / Steady State		<ul style="list-style-type: none"> • Green = FMC • Yellow = PMC • Red = NMC
NRCC		2	2	100%	0	0	Not Activated		
HLT		1	1	100%	0	0	Activated		
DEST							Not Activated		
RRCCs		10	10	100%	0	0	Not Activated		
RWCs/MOCs		10	10	100%	0	0	Not Activated		



FEMA

FEMA's mission is to support our citizens and first responders to ensure that as a nation we work together to build, sustain, and improve our capability to prepare for, protect against, respond to, recover from, and mitigate all hazards.