

The Disaster Center is dedicated to the idea that disaster mitigation is cost effective and individuals pursuing their own interest are the greatest potential force for disaster reduction.

Please consider making a small donation to the Disaster Center



When disaster mitigation is cost effective, we are on the road to bringing disasters to an end.



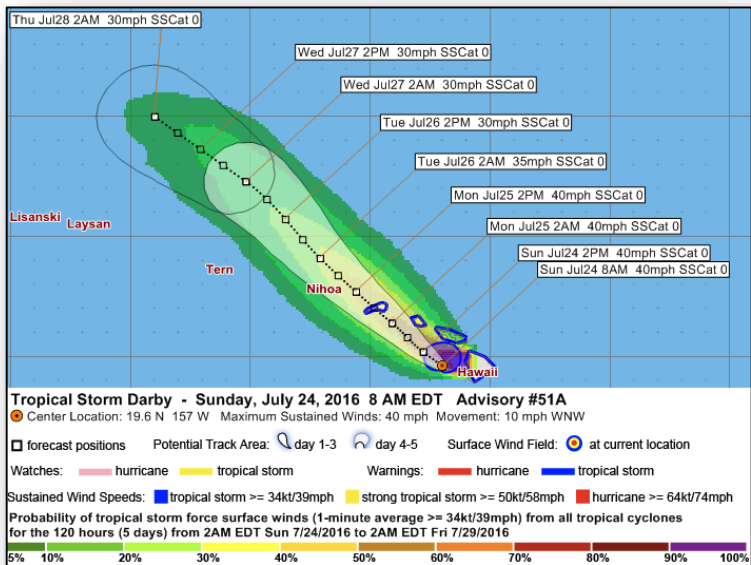
FEMA

Daily Operations Briefing

Sunday, July 24, 2016

8:30 a.m. EDT

Central Pacific – Tropical Storm Darby



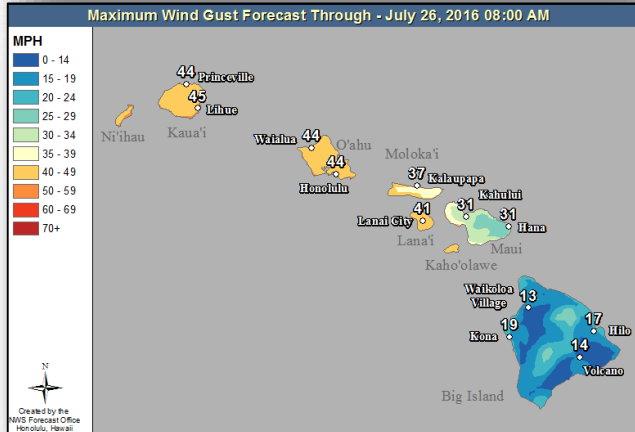
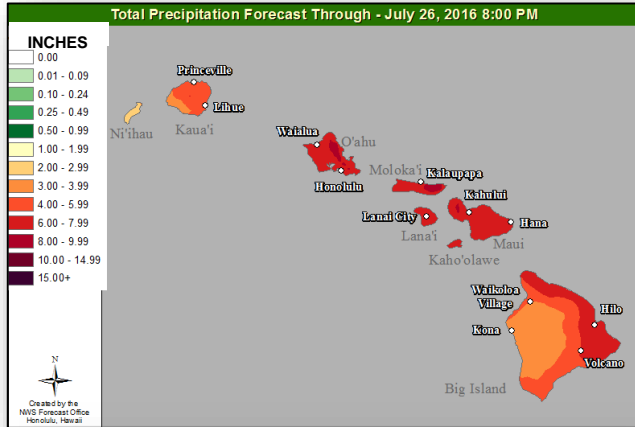
Tropical Storm Darby: (Advisory #51 as of 5:00 a.m. EDT)

- Located 145 miles SSE of Honolulu, HI
- Moving WNW at 10 mph
- Maximum sustained winds 40 mph
- Slight weakening by Monday
- Tropical storm force winds extend 70 miles
- Tropical storm force winds expected or occurring over portions of the Big Island, Maui, Oahu, and Kauai
- Storm total rainfall amounts of 8-12 inches, with isolated maximum amounts of 15 inches possible; flash flooding and landslides possible
- Surf reaching 15-20 feet along windward facing shores of the Big Island and Maui county; 10-14 foot surf possible along east facing shores of the rest of the islands

Watches/Warnings

- Tropical Storm Warning in effect for all islands in Hawaii
- Flash Flood Watch for Oahu, Kahoolawe, Lanai, Maui, Molokai, and the Big Island
- High Surf Warning in effect for east facing shores of the Big Island and Maui

Central Pacific – Tropical Storm Darby



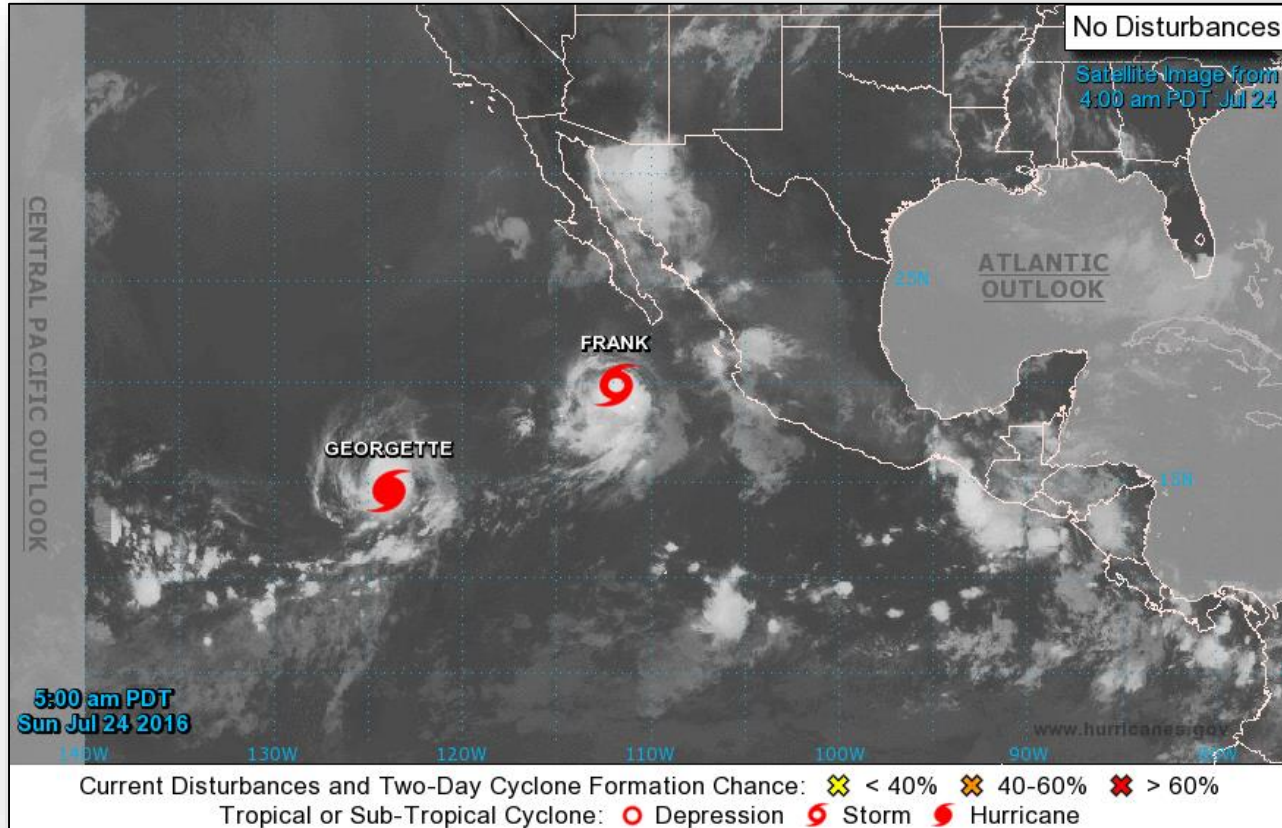
Impacts:

- No injuries/fatalities reported
- All ports closed for the Big Island, Oahu, and Maui county
- All other airports open
- Minor road blockages reported on the Big Island and Maui county
- One cell tower out of service on the Big Island
- Minimal power outages: 30 customers without power on the Big Island, down from peak of 3,400 (*Region 9 report as of 1:00 am EDT*)
- 22 shelters open with 162 occupants (*ARC report as of 6:36 am EDT*)

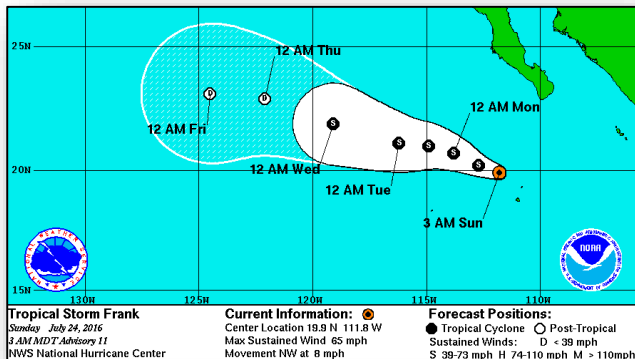
State/Federal Response:

- Governor declared State of Emergency
- HI EOC at Partial Activation
- HI National Guard activated for possible damage assessments
- Region IX IMAT and LNOs deployed to HI and Maui County EOCs
- Region IX RRCC not activated; RWC at Watch/Steady State
- No requests for FEMA assistance

Tropical Outlook - Eastern Pacific

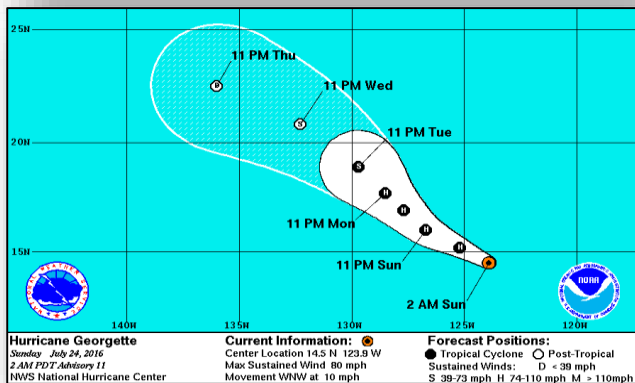


Tropical Outlook – Eastern Pacific



Tropical Storm Frank: (Advisory #11 as of 5:00 a.m. EDT)

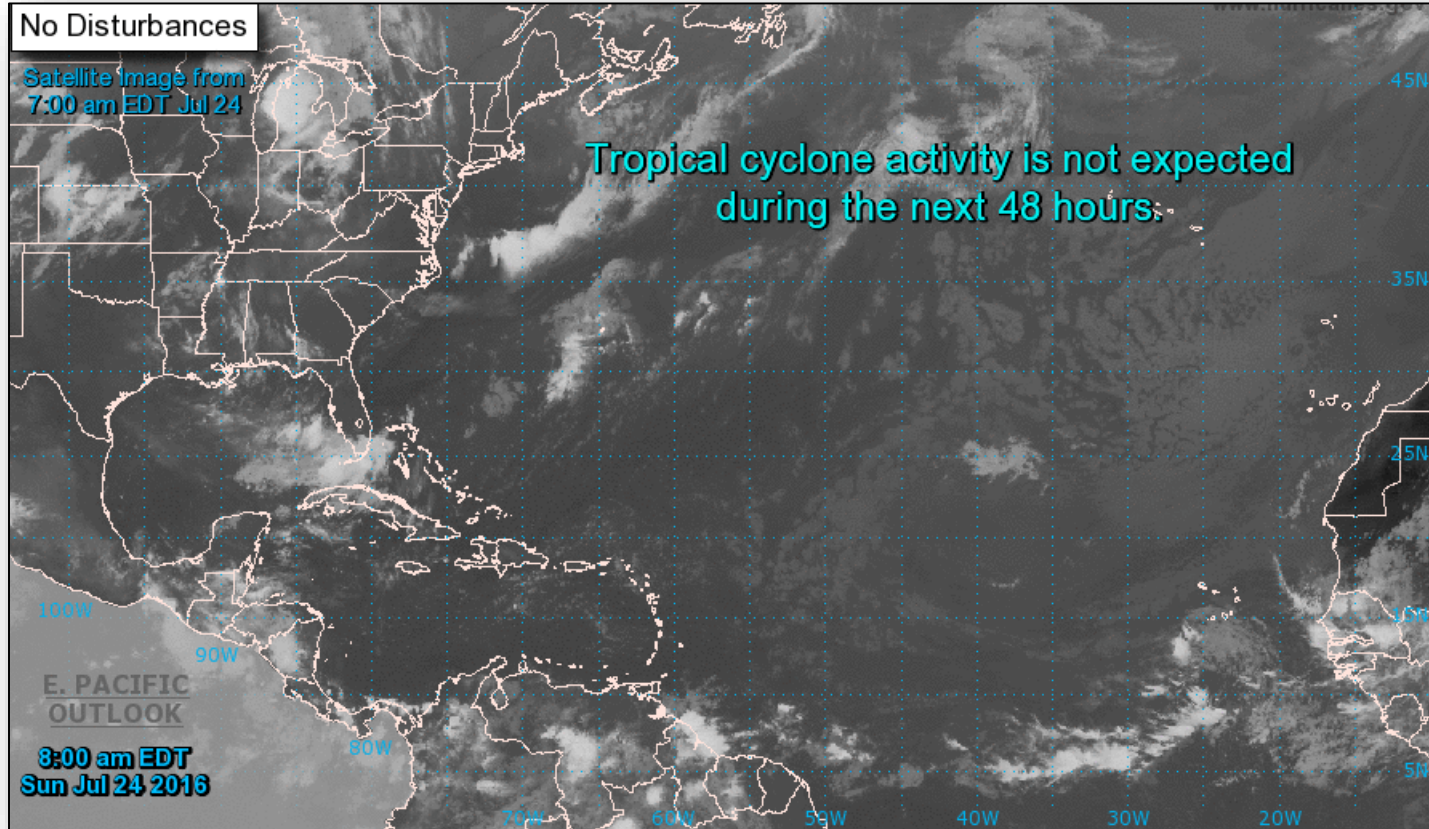
- Located 240 miles SSW of southern tip of Baja California Mexico
- Moving NW at 8 mph
- W or WNW track is expected for the next couple of days
- Maximum sustained winds 65 mph
- Weakening forecasted Monday
- Tropical storm force winds extend 90 miles



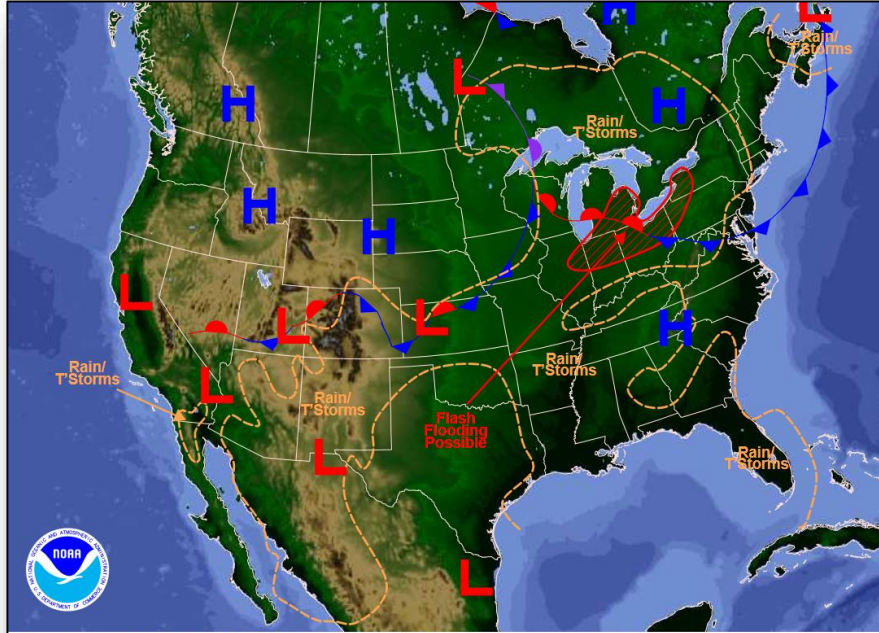
Hurricane Georgette: (Advisory #11 as of 5:00 a.m. EDT)

- Located 1,085 miles WSW of southern tip of Baja California Mexico
- Moving WNW at 10 mph
- Turn toward the NW motion with decrease in forward speed expected over the next 48 hours
- Maximum sustained winds 80 mph
- Additional strengthening possible during the next 12 to 24 hours
- Hurricane force winds extend 25 miles; tropical storm force winds extend 70 miles

Tropical Outlook - Atlantic

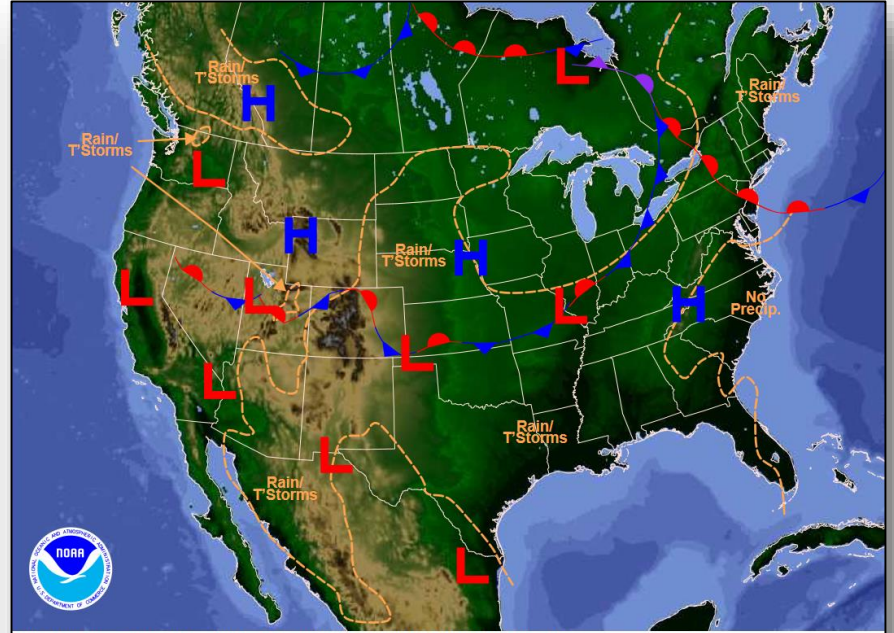


National Weather Forecast



Weather Forecast for Sun, Jul 24, 2016, issued 4:42 AM EDT
DOC/NOAA/NWS/NCEP/Weather Prediction Center
Prepared by Kong based on WPC, SPC and NHC forecasts

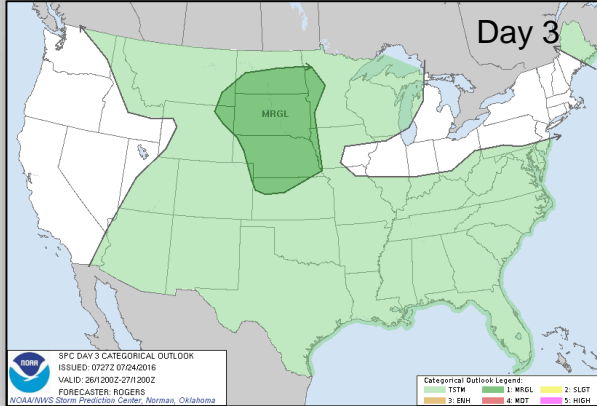
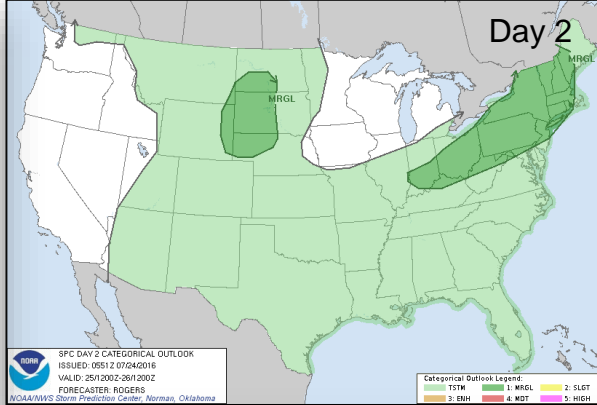
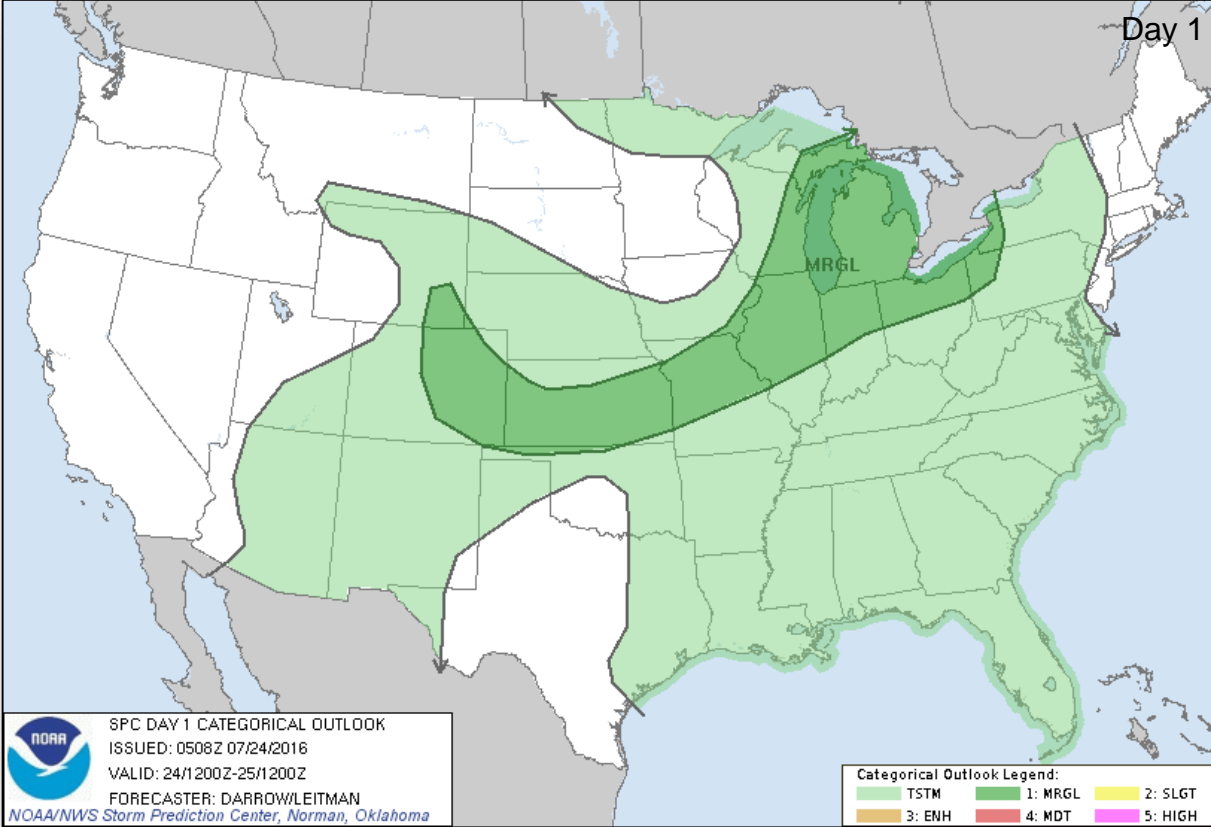
Today



Weather Forecast for Mon, Jul 25, 2016, issued 4:51 AM EDT Sun, Jul 24, 2016
DOC/NOAA/NWS/NCEP/Weather Prediction Center
Prepared by Kong based on WPC, SPC and NHC forecasts

Tomorrow

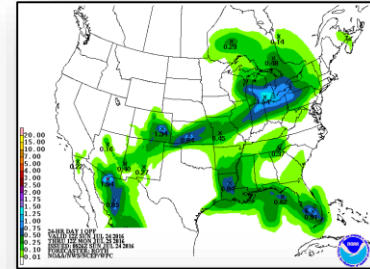
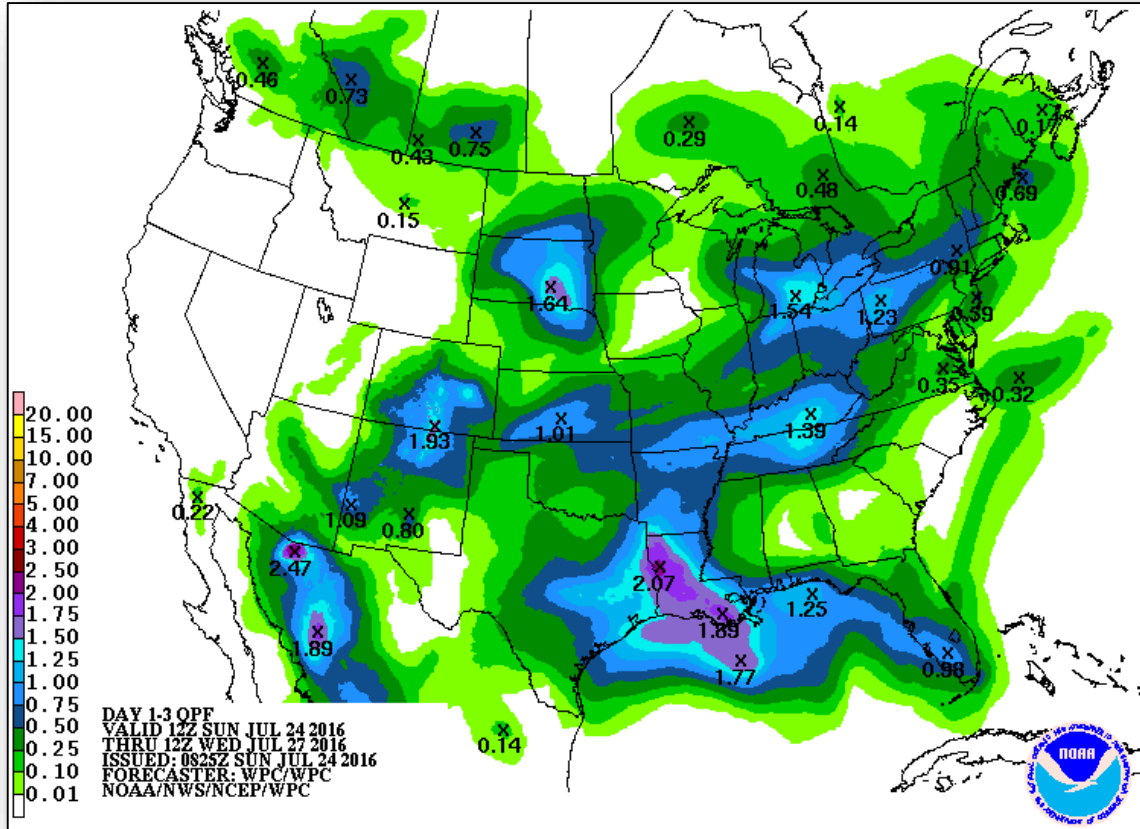
Severe Weather Outlook – Days 1-3



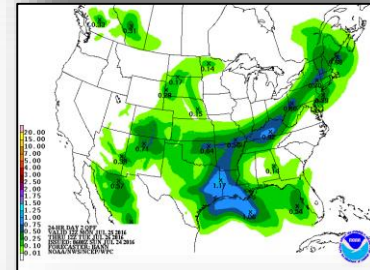
Precipitation Forecast – Days 1-3



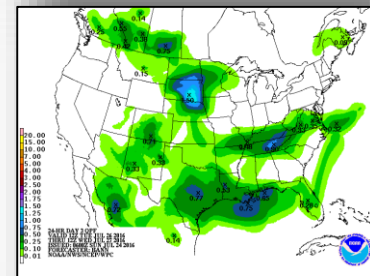
FEMA



Day 1

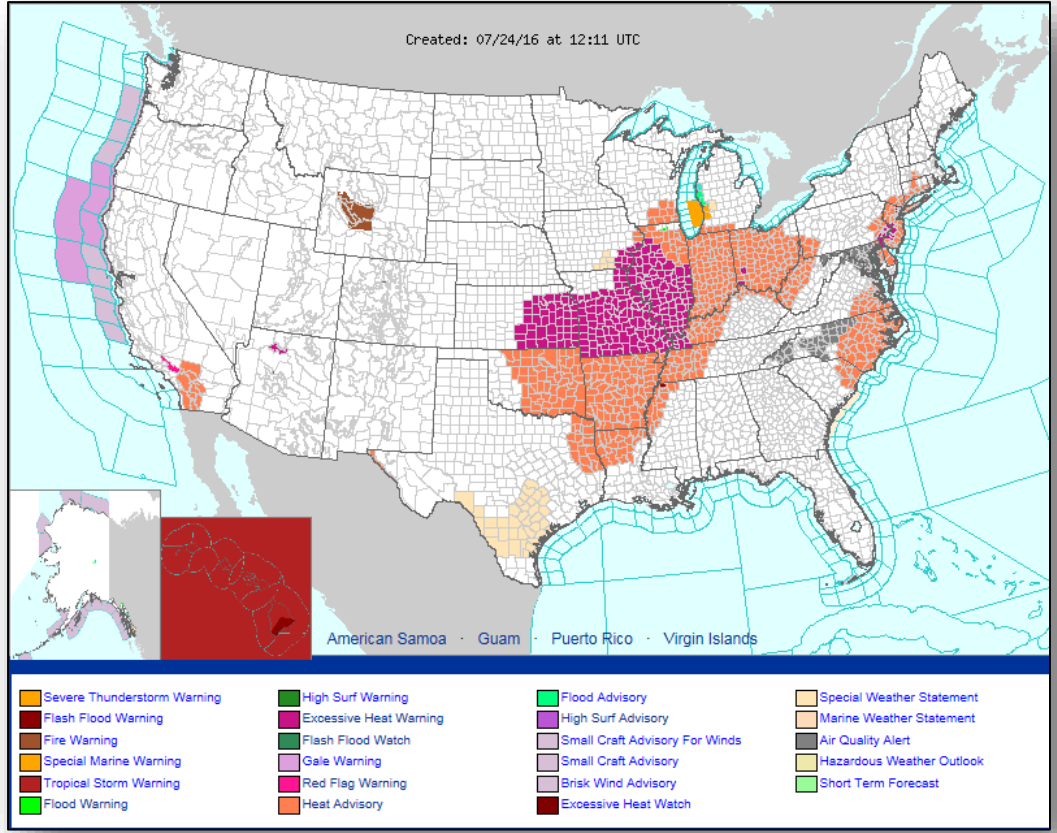


Day 2

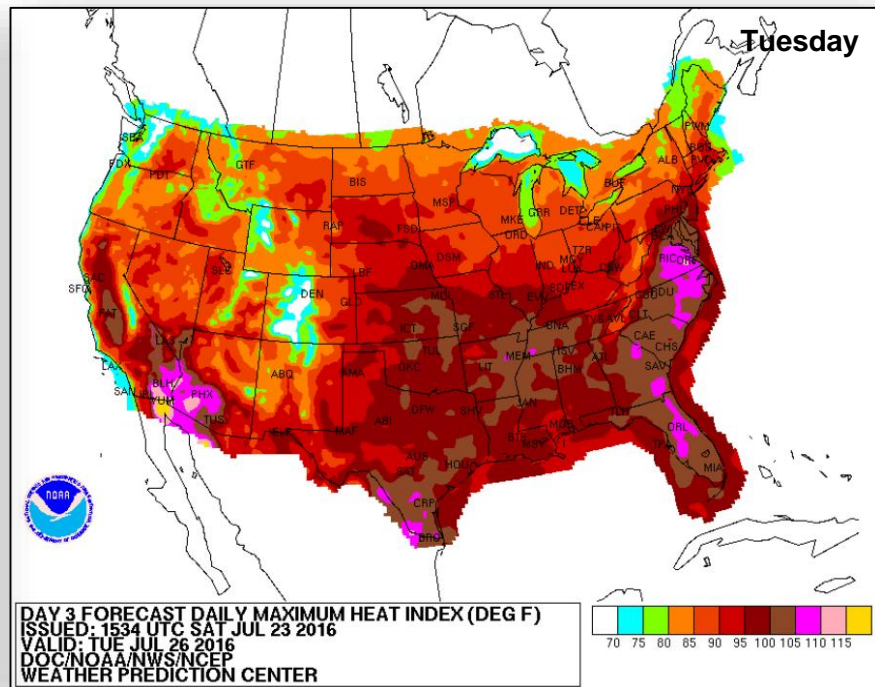
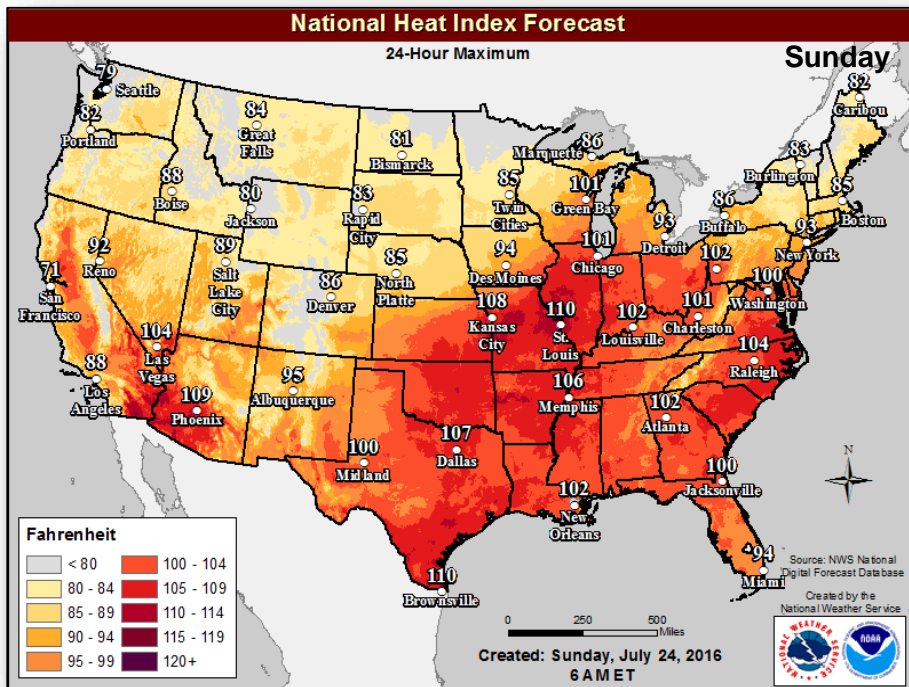


Day 3

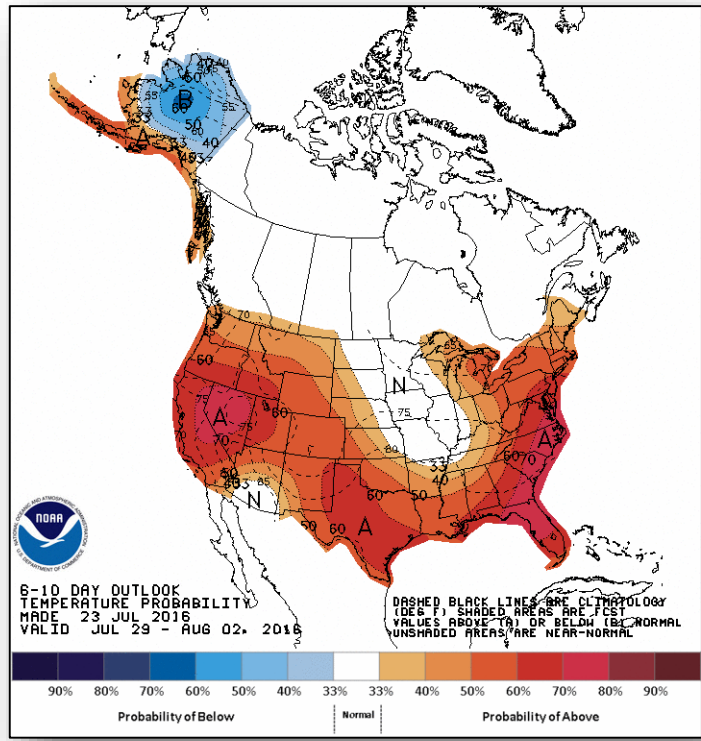
Active Watches & Warnings



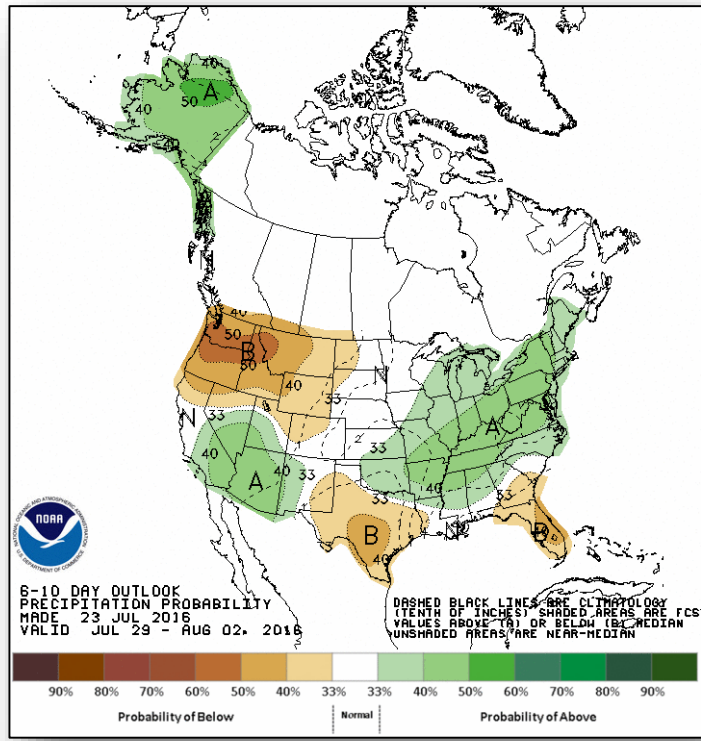
Prolonged Heat Wave



6 - 10 Day Outlooks



6 - 10 Day Temperature Probability

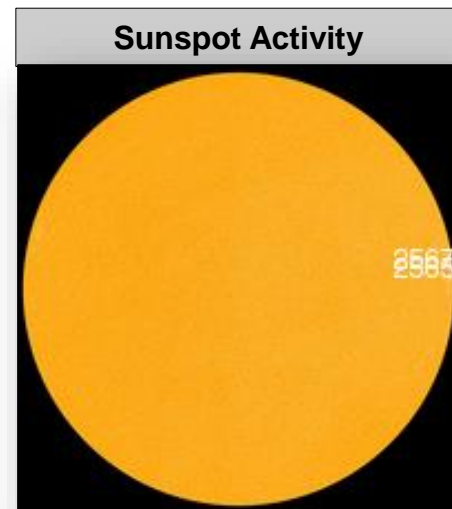
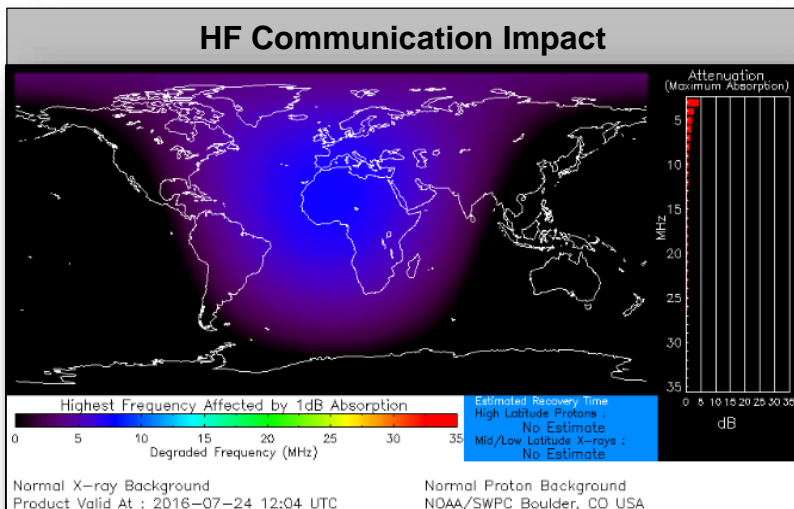


6 - 10 Day Precipitation Probability



Space Weather

	Past 24 Hours	Current	Next 24 Hours
Space Weather Activity	Minor	None	None
Geomagnetic Storms	None	None	None
Solar Radiation Storms	None	None	None
Radio Blackouts	R1	None	None



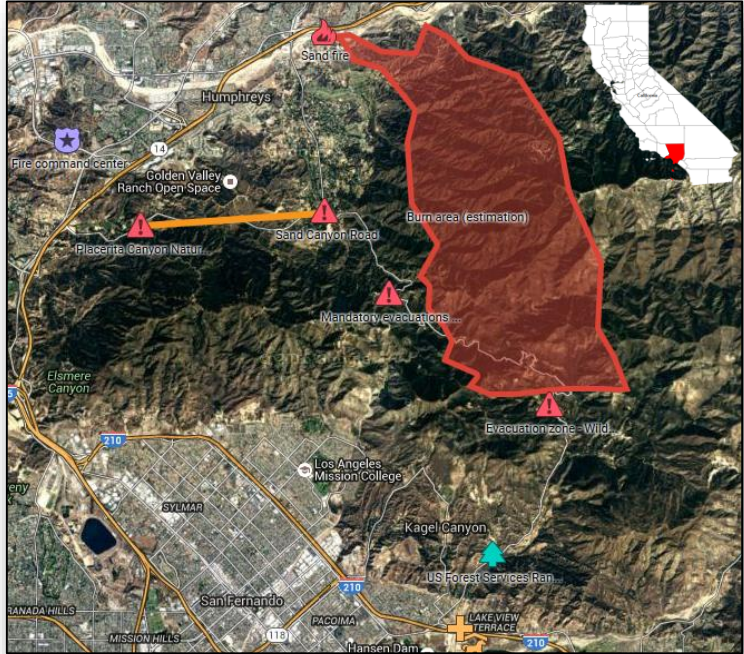
Sand Fire – California



Fire Name	Location	Acres burned	% Contained	Est. Full Containment	FMAG	Structures Lost / Threatened	Fatalities / Injuries
Sand	Los Angeles County, CA (5 miles north of Los Angeles)	20,000	10%	July 29	Approved July 23	1 / 1,200 homes	0/0

Current Situation

- Fire began on July 22 and has burned over 20k acres of Federal, State, County, and private land
- FMAG approved July 23
- Estimated population threatened: 45K
 - Communities threatened include Sylmar, Lancaster, Pacoima, Placerita, Sand Canyon, and Aqua Dulce
- Mandatory evacuations in effect for 1,500 people
- 2 shelters open with 5 occupants



Joint Preliminary Damage Assessments



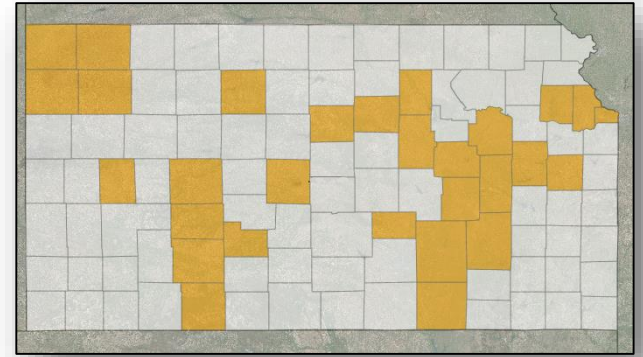
Region	State / Location	Event	I/PA	Number of Counties		Start – End
				Requested	Complete	
V	WI	Severe Storms & Flooding July 11 -12, 2016	PA	8 counties 2 tribes	0 0	7/25 – TBD

Major Disaster Request – Kansas



July 21, 2016

- Request for Major Disaster Declaration for severe storms, tornadoes & flooding during the period of May 22-31, 2016
- Requesting:
 - Public Assistance for 29 counties
 - Hazard Mitigation statewide

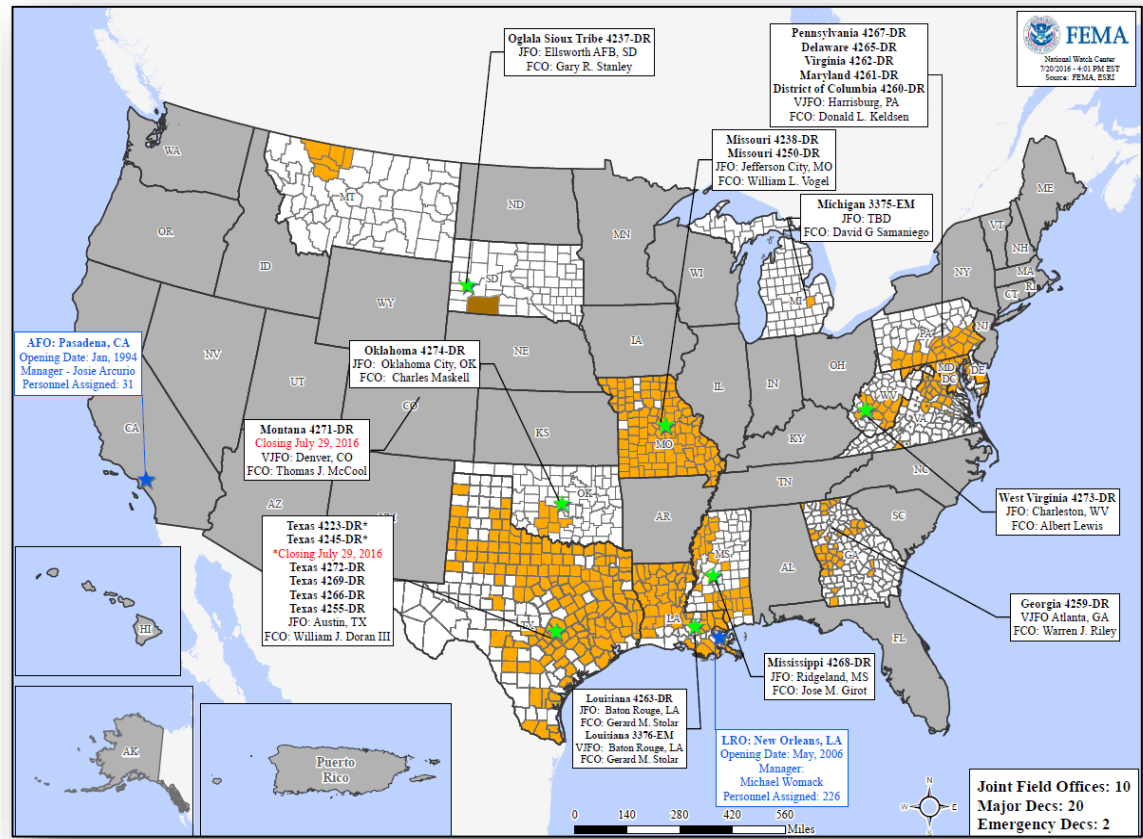


Disaster Requests & Declarations



Declaration Requests in Process		Requests APPROVED (since last report)	Requests DENIED (since last report)
2	Date Requested	0	1
CA – DR Fire	July 15, 2016		Denied July 22, 2016
MT – DR Tornado	July 20, 2016		
KS – DR Severe Storms, Tornadoes, and Flooding	July 22, 2016		

Open Field Offices as of July 24, 2016



FEMA Readiness - Deployable Teams & Assets



Deployable Teams & Assets									
Resource	Status	Total	FMC Available		Partially Available	Not Available	Detailed, Deployed, Activated	Comments	Rating Criterion
FCO	Yellow	37	11	30%	0	2	24		OFDC Readiness: FCO Green Yellow Red Type 1 3+ 2 1 Type 2 4+ 3 2 Type 3 4 3 2 FDRC 3 2 1
FDRC	Yellow	9	2	22%	0	1	6		
US&R	Green	28	26	93%	1	0	1	NJ TF-1 Partially Mission Capable PA TF-1 Red NMC for Federal Service (tasked locally for Democratic National Convention operations through July 29)	<ul style="list-style-type: none"> Green = Available/FMC Yellow = Available/PMC Red = Out-of-Service Blue = Assigned/Deployed
National IMAT	Green	3	3	100%	0	0	0	West: Primary (On Call)	<ul style="list-style-type: none"> Green: 3 available Yellow: 1-2 available Red: 0 avail (<i>Individual N-IMAT red if 50% of Section Chiefs and/or Team Leader is unavailable for deployment.</i>)
Regional IMAT	Green	13	7	54%	0	0	6	Region II: Returned from MD Region V: Returned from OH <u>Deployed:</u> Region I: WV (4273-WV) Region III: WV (4273-WV) Region IV: Team 1 to WV (4273-WV) Region VI: Team 1 to TX (4266-TX) Region VII: TX (4272-TX) Region IX: Team 2 to HI (TS Darby)	<ul style="list-style-type: none"> Green: >6 teams available Yellow: 4 - 6 teams available Red: < 4 teams available R-IMAT also red if TL Ops/Log Chief is unavailable & has no qualified replacement
MERS Teams	Green	18	14	78%	0	0	4	<u>Deployed:</u> Denton: 2 teams to TX (4272-TX) Denver: 1 team to OH (RNC 2016 through 7/25) Maynard: 1 team to WV (WV-4273)	<ul style="list-style-type: none"> Green = >66% available Yellow = 33% to 66% available Red = <33% available

FEMA Readiness - National & Regional Teams



National/Regional Teams									
Resource	Status	Total	FMC Available		Partially Available	Not Available	Status	Comments	Rating Criterion
NWC		5	5	100%	0	0	Watch / Steady State		<ul style="list-style-type: none"> • Green = FMC • Yellow = PMC • Red = NMC
NRCC		2	2	100%	0	0	Not Activated		
HLT		1	1	100%	0	0	Activated		
DEST							Not Activated		
RRCCs		10	10	100%	0	0	Not Activated		
RWCs/MOCs		10	10	100%	0	0	Not Activated		



FEMA

FEMA's mission is to support our citizens and first responders to ensure that as a nation we work together to build, sustain, and improve our capability to prepare for, protect against, respond to, recover from, and mitigate all hazards.