

The Disaster Center is dedicated to the idea that disaster mitigation is cost effective and individuals pursuing their own interest are the greatest potential force for disaster reduction.

Please consider making a small donation to the Disaster Center



When disaster mitigation is cost effective, we are on the road to bringing disasters to an end.



# FEMA

## Daily Operations Briefing

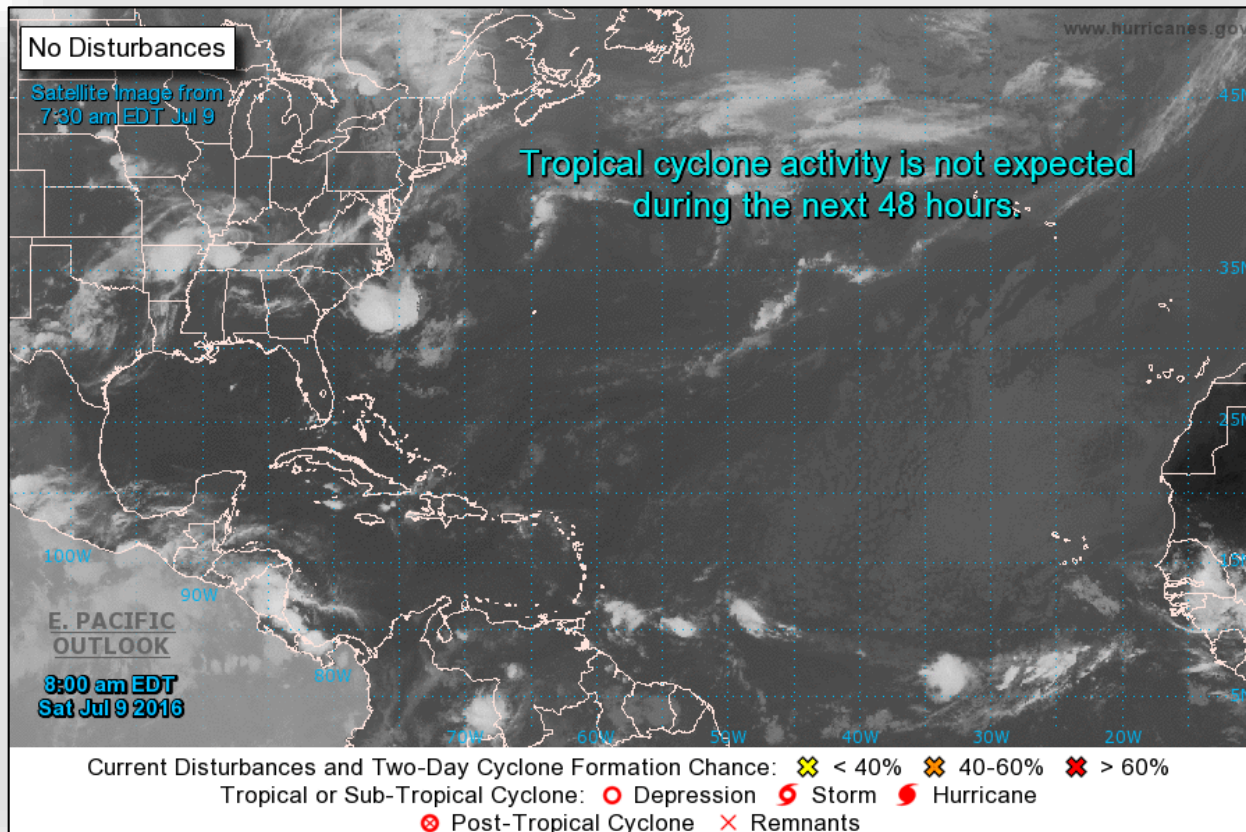
Saturday, July 9, 2016

8:30 a.m. EDT

# Tropical Outlook - Atlantic



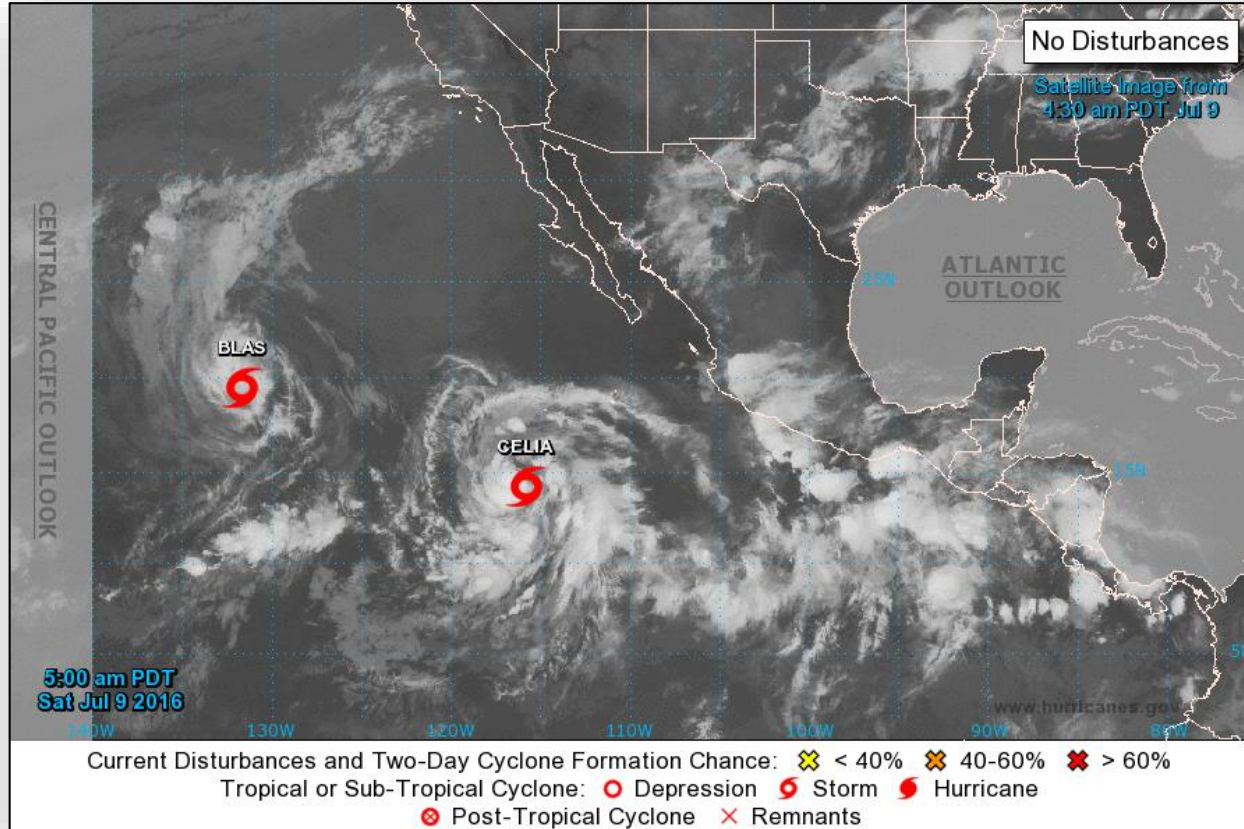
FEMA



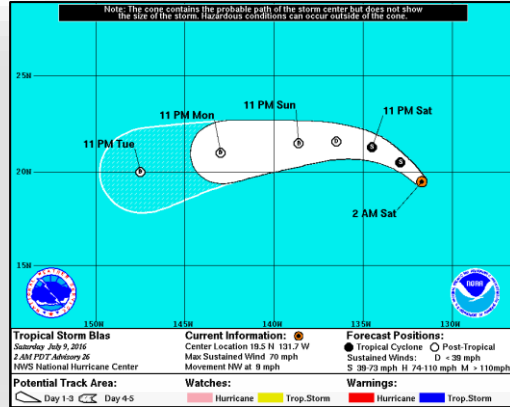
# Tropical Outlook - Eastern Pacific



FEMA

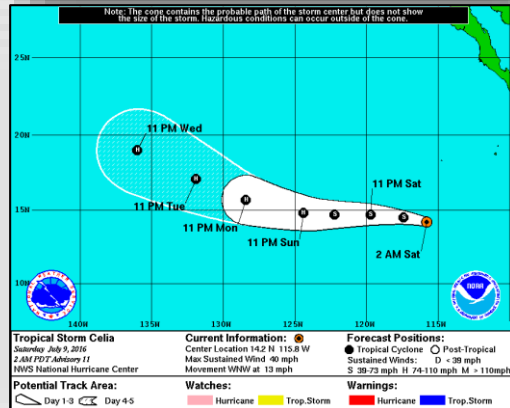


# Tropical Outlook - Eastern Pacific



## **Tropical Storm Blas:** (Advisory #26 as of 5:00 a.m. EDT)

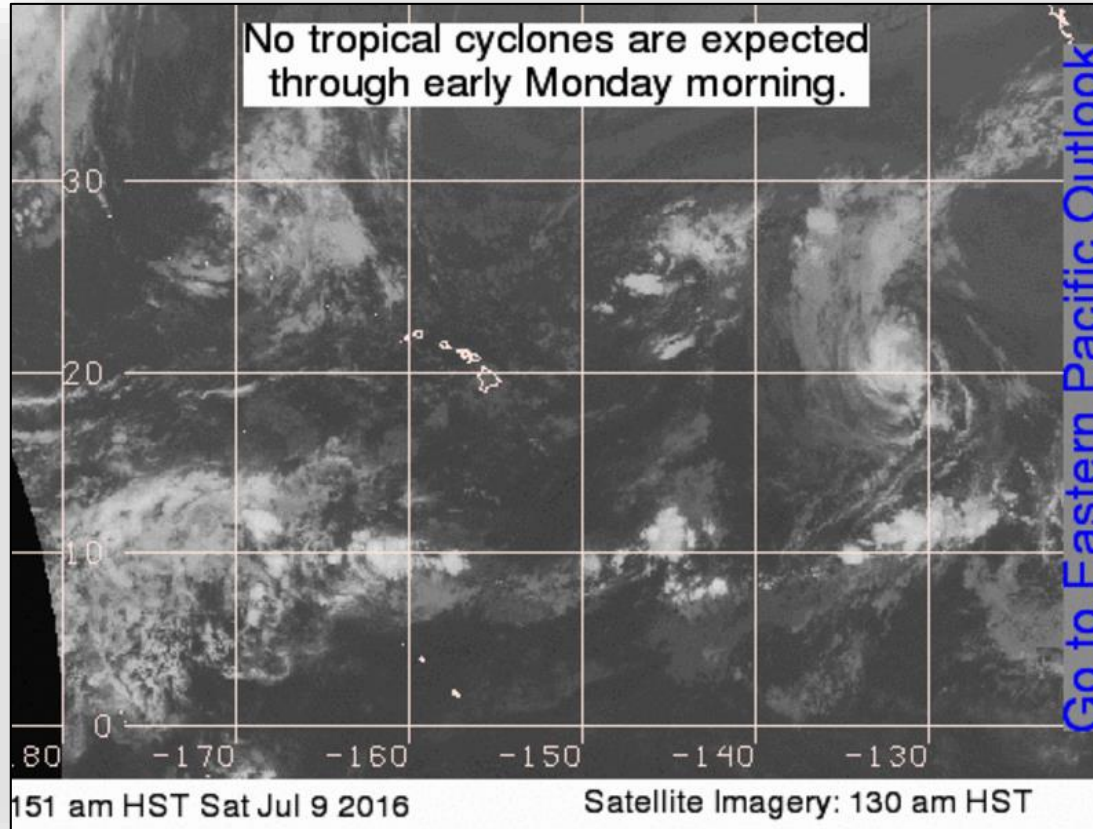
- Located 1,520 miles E of Hilo, Hawaii; moving WNW at 9 mph
- Maximum sustained winds 70 mph; with higher gusts
- A turn to the WNW is forecast tonight followed by a turn W on Sunday
- Rapid weakening is forecast, expected to be a remnant low by Sunday
- Tropical-storm-force winds extend outward 105 miles
- No coastal watches or warnings in effect



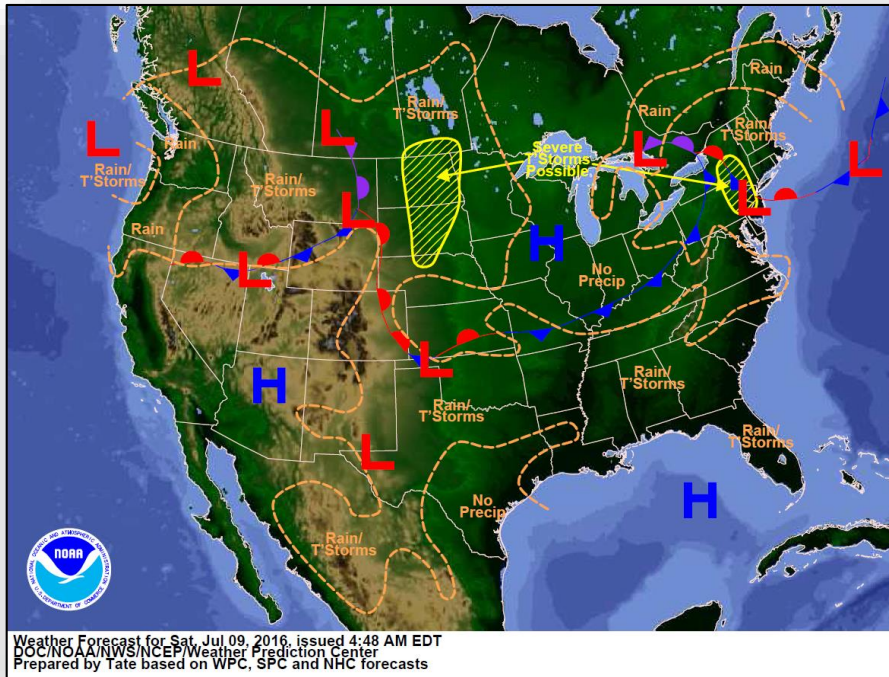
## **Tropical Storm Celia:** (Advisory #11 as of 5:00 a.m. EDT)

- Located 715 miles SW of southern tip of Baja California Mexico
- Moving WNW near 13 mph; a turn toward the W forecast today
- Maximum sustained winds 40 mph; with higher gusts
- Strengthening forecast during next 48 hours; expected to become a hurricane on Sunday
- Tropical-storm-force winds extend outward up to 45 miles
- No coastal watches or warnings in effect

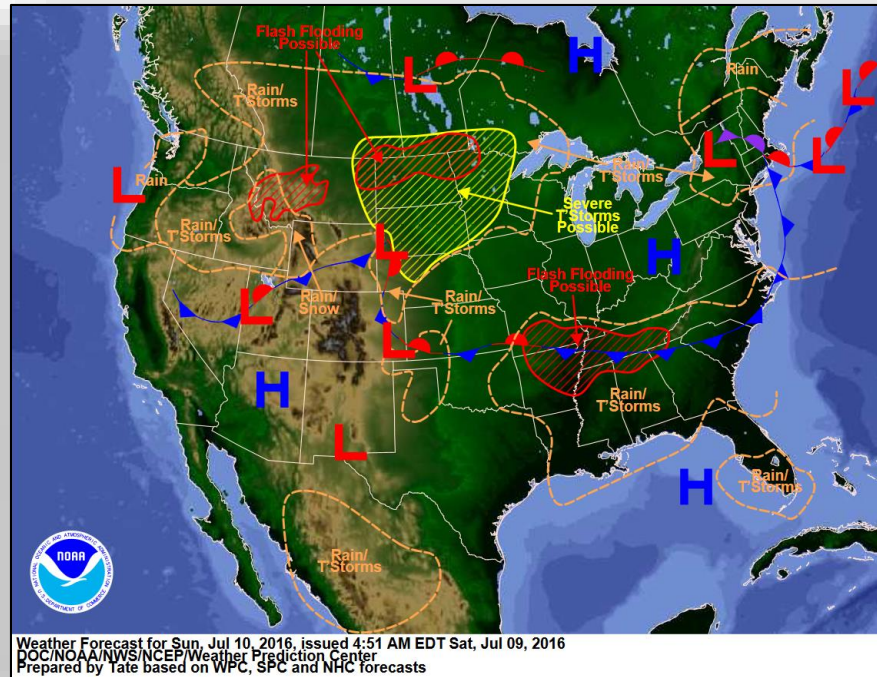
# Tropical Outlook - Central Pacific



# National Weather Forecast

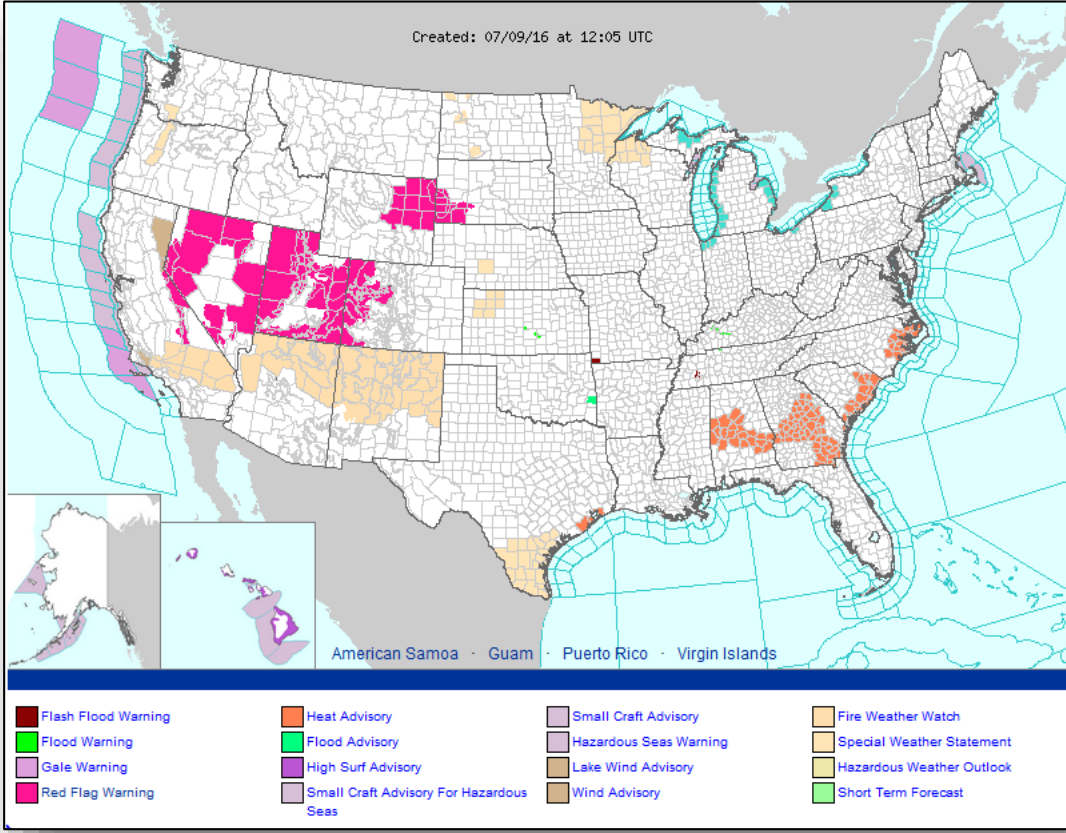


*Today*



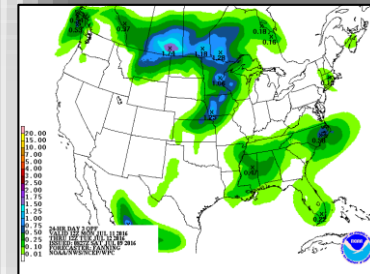
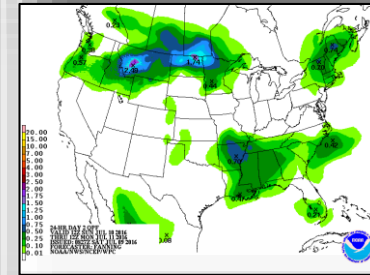
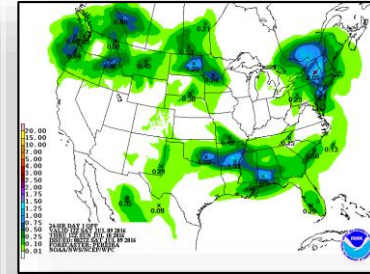
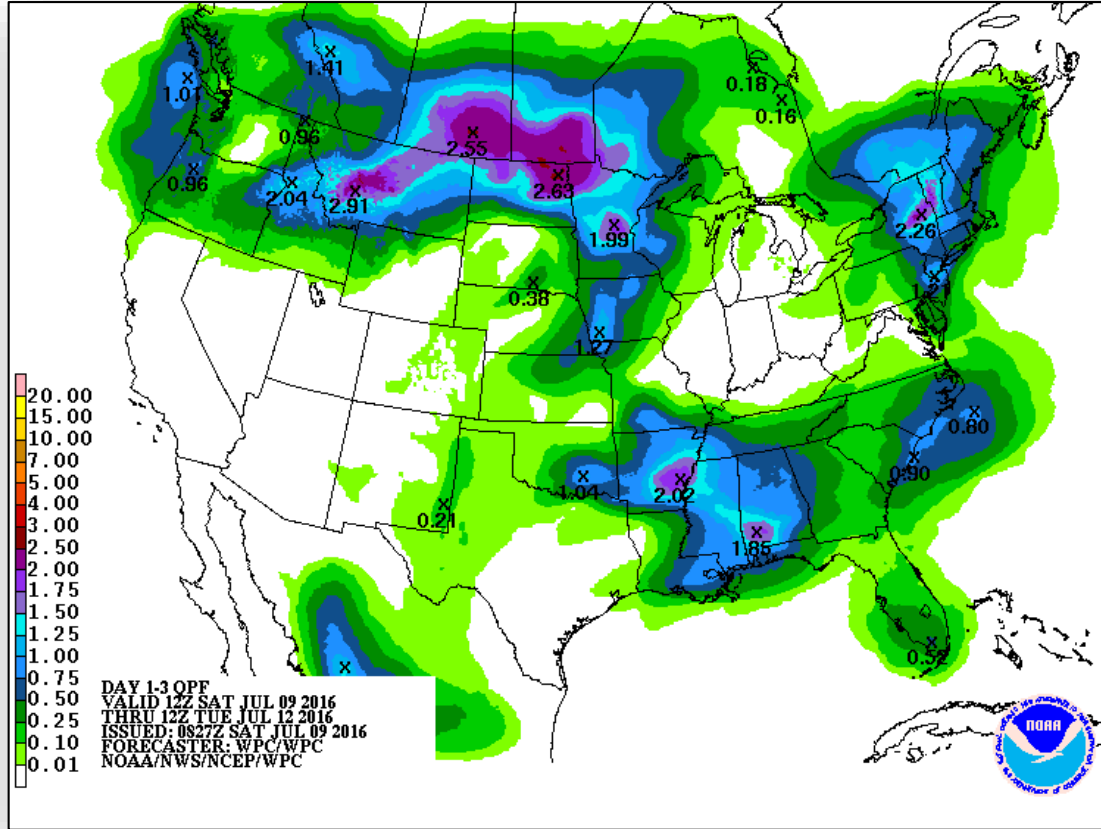
*Tomorrow*

# Active Watches & Warnings

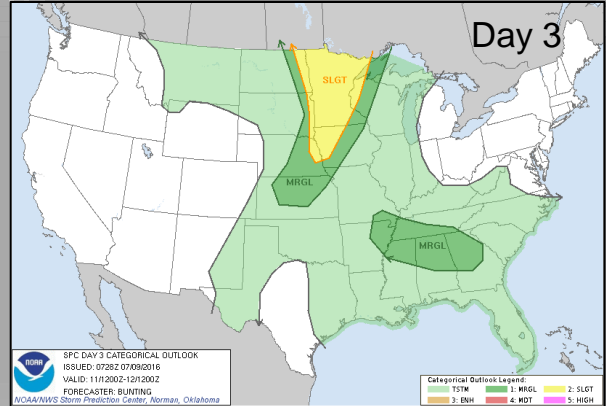
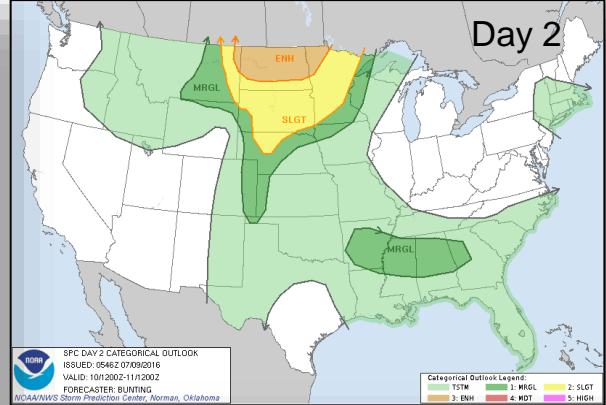
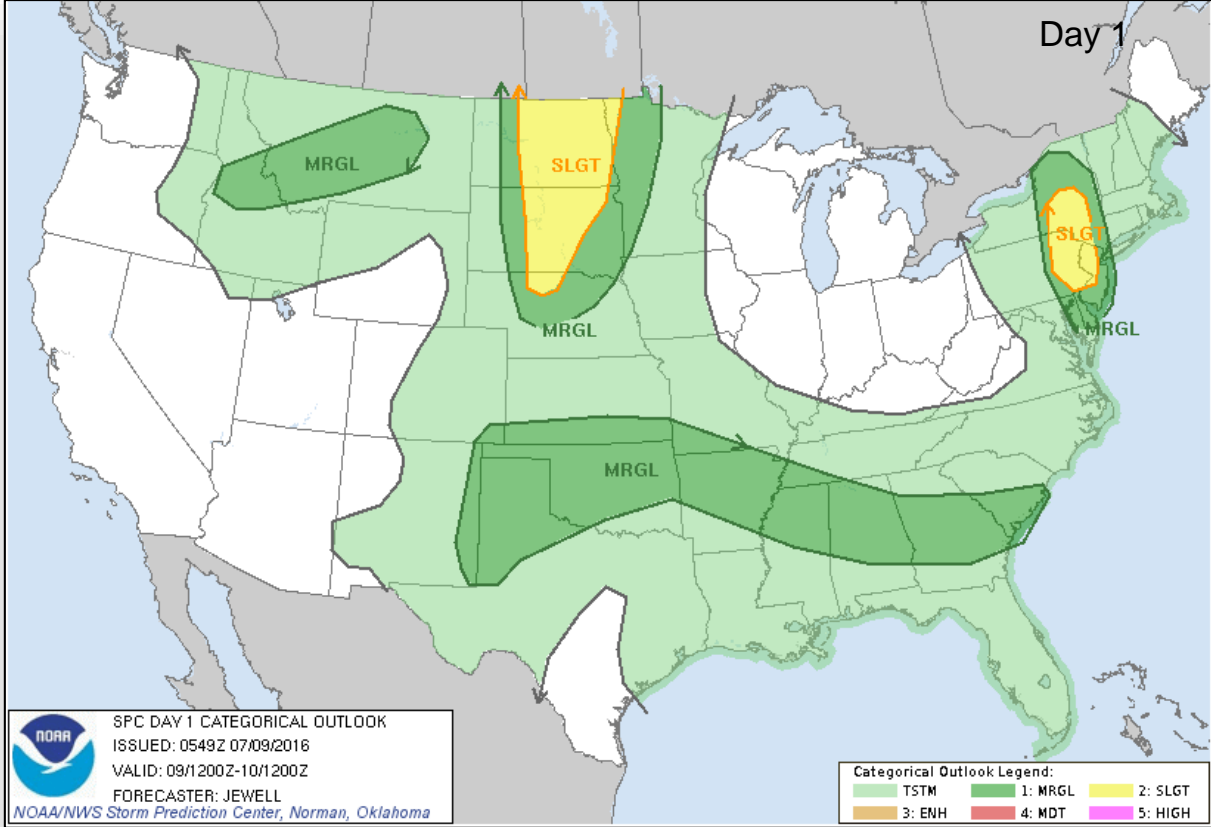




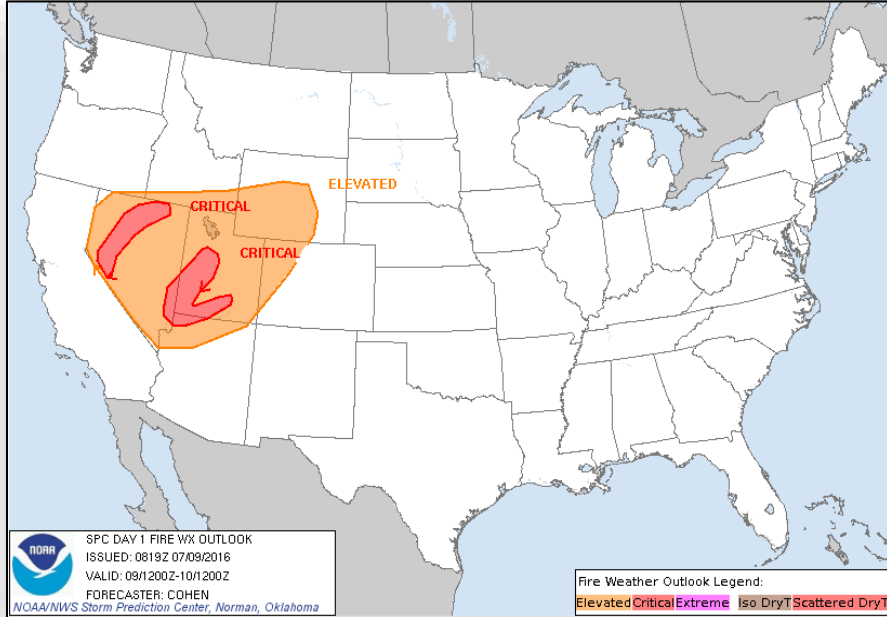
# Precipitation Forecast – Days 1-3



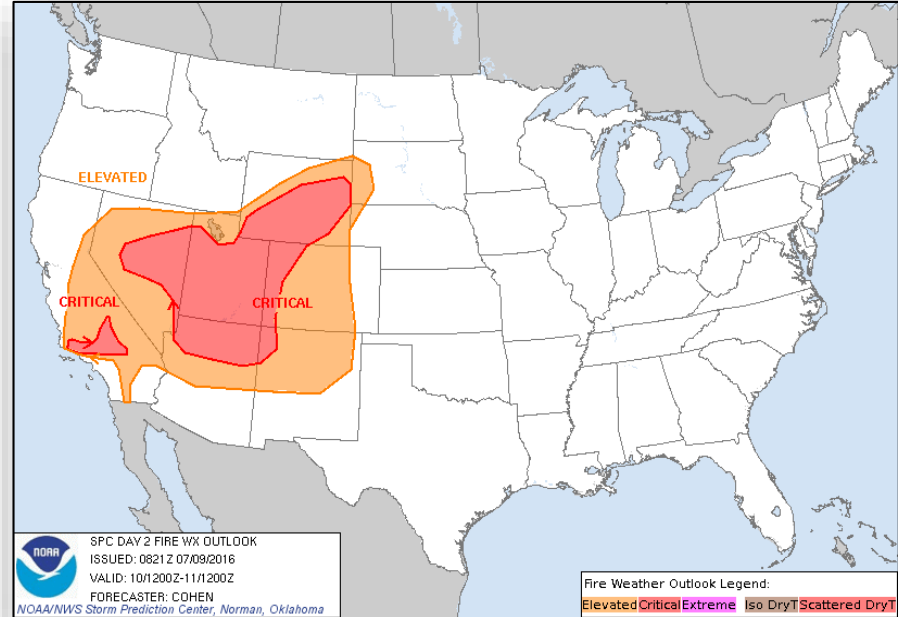
# Severe Weather Outlook - Days 1 - 3



# Fire Weather Outlook



Day 1

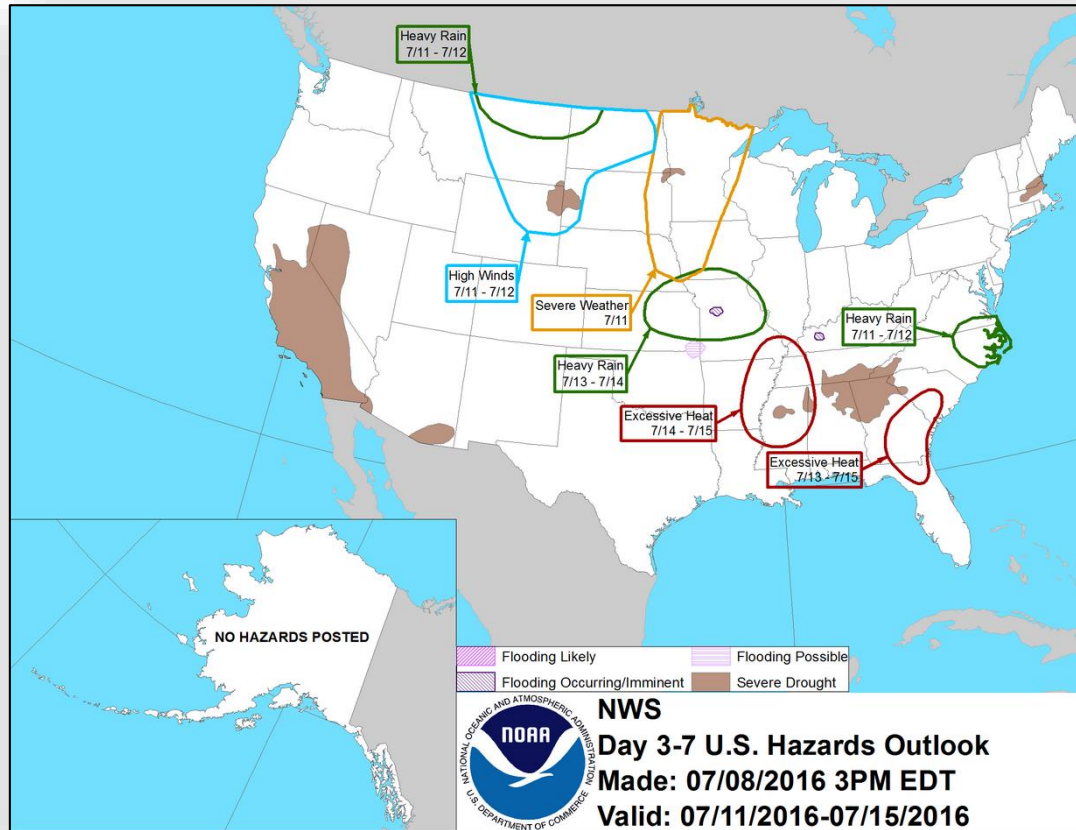


Day 2

# Hazards Outlook - July 11-15



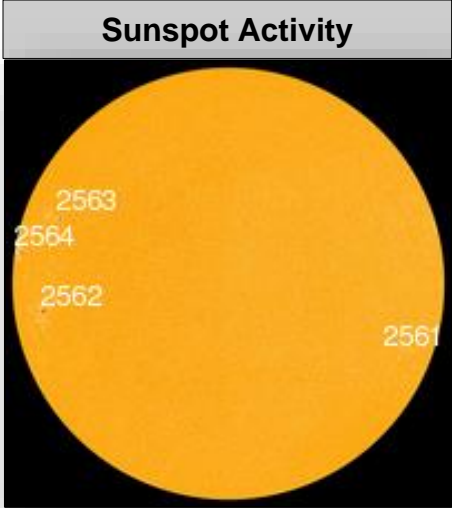
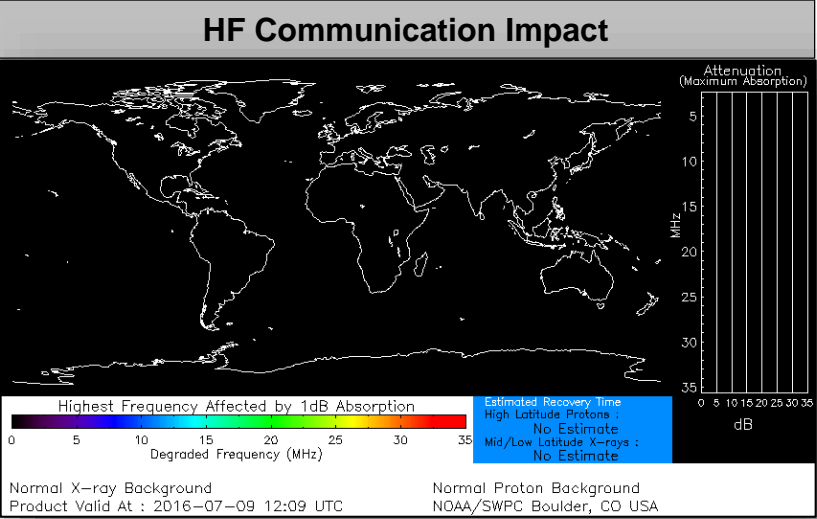
FEMA



# Space Weather



	Past 24 Hours	Current	Next 24 Hours
<b>Space Weather Activity</b>	<b>Minor</b>	<b>None</b>	<b>Minor</b>
Geomagnetic Storms	G1	None	G1
Solar Radiation Storms	None	None	None
Radio Blackouts	None	None	None



# Joint Preliminary Damage Assessments



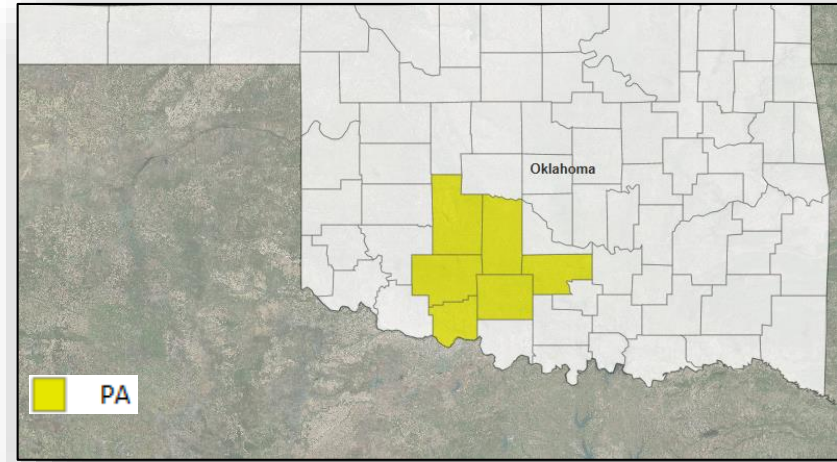
Region	State / Location	Event	IA/PA	Number of Counties		Start – End
				Requested	Complete	
VII	KS	Severe Storms and Flooding May 22 - 31, 2016	PA	31	23	6/20 – TBD
IX	CA	Erskine Fire June 23, 2016 and continuing	IA	1	0	7/7 – TBD

# Major Disaster Declaration Request – OK



July 8, 2016

- The Governor requested a Major Disaster Declaration for State of Oklahoma as a result of severe storms, tornadoes, straight-line winds and flooding beginning on June 11, 2016, and continuing
- Requesting:
  - Public assistance for 6 counties
  - Hazard Mitigation statewide



# Disaster Requests & Declarations



Declaration Requests in Process		Requests APPROVED (since last report)	Requests DENIED (since last report)
2	Date Requested	0	0
OK – DR Severe storms, tornadoes, straight-line winds & flooding	July 8, 2016		
FL – EM Toxic Algae Blooms	July 6, 2016		

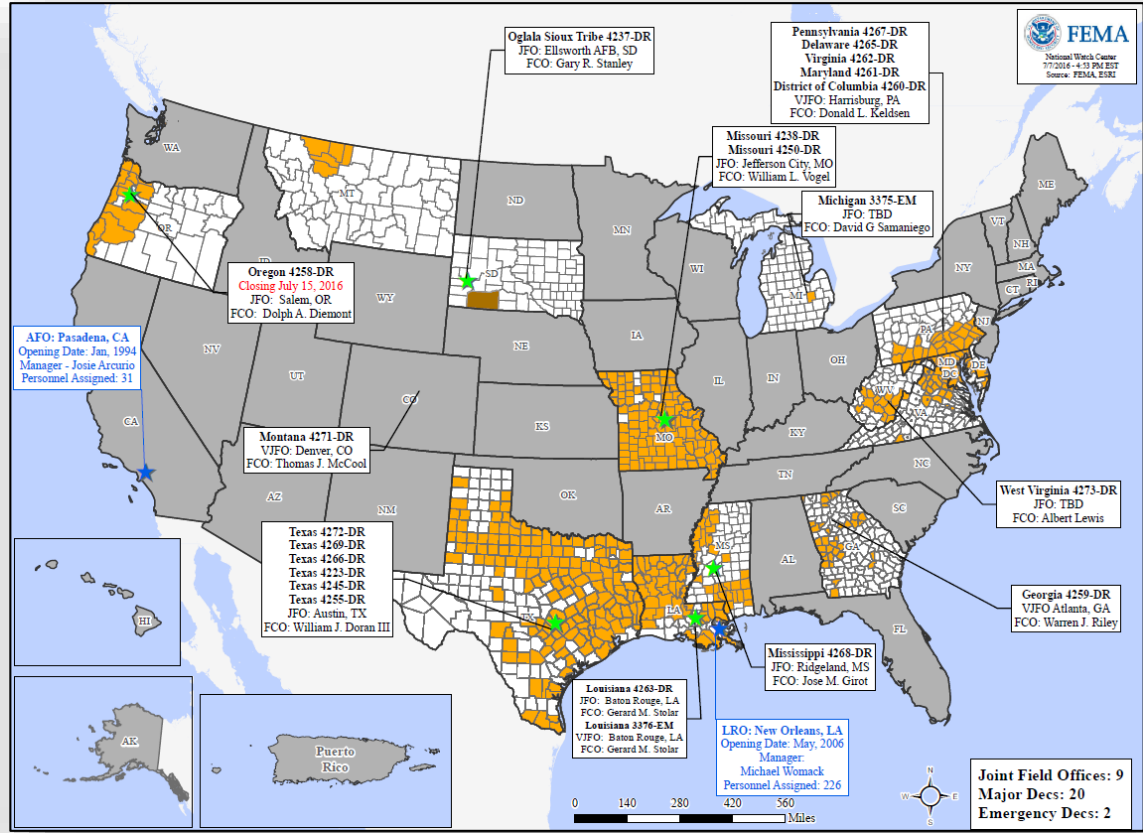


# Disaster Amendments



Amendment	Effective Date	Action
Amendment No. 4 to FEMA-4272-DR-TX	July 8, 2016	Adds 10 counties for PA Adds 5 counties for PA (Categories A and C-G)

# Open Field Offices as of July 9, 2016



# FEMA Readiness - Deployable Teams & Assets



Deployable Teams & Assets									
Resource	Status	Total	FMC Available		Partially Available	Not Available	Detailed, Deployed, Activated	Comments	Rating Criterion
FCO		36	14	39%	0	3	19		OFDC Readiness: FCO    Green    Yellow    Red Type 1   3+        2        1 Type 2   4+        3        2 Type 3   4         3        2  FDRC    3        2        1
FDRC		10	3	30%	0	1	6		
US&R		28	27	96%	1	0	0	NJ TF-1 Partially Mission Capable	<ul style="list-style-type: none"> <li>• Green = Available/FMC</li> <li>• Yellow = Available/PMC</li> <li>• Red = Out-of-Service</li> <li>• Blue = Assigned/Deployed</li> </ul>
National IMAT		3	3	100%	0	0	0	West: Primary (On Call)	<ul style="list-style-type: none"> <li>• Green: 3 available</li> <li>• Yellow: 1-2 available</li> <li>• Red: 0 avail (<i>Individual N-IMAT red if 50% of Section Chiefs and/or Team Leader is unavailable for deployment.</i>)</li> </ul>
Regional IMAT		13	8	62%	0	0	5	<u>Deployed:</u> RI: To WV (4273-WV) RIll: To WV (4273-WV) RIV: Team 1 to WV (4273-WV) RVI: Team 1 to TX (4266-TX) RVII: To TX (4272-TX)	<ul style="list-style-type: none"> <li>• Green: &gt;6 teams available</li> <li>• Yellow: 4 - 6 teams available</li> <li>• Red: &lt; 4 teams available</li> </ul> R-IMAT also red if TL Ops/Log Chief is unavailable & has no qualified replacement
MERS Teams		18	12	67%	0	0	6	<u>Deployed:</u> Denton: 2 teams to TX (4272-TX) Frederick: 1 team to WV (4273-WV) Thomasville: 1 team to WV (4273-WV) Denver: 1 team to OH (RNC 2016) Denver: 1 team to WA (Readiness Exercise)	<ul style="list-style-type: none"> <li>• Green = &gt;66% available</li> <li>• Yellow = 33% to 66% available</li> <li>• Red = &lt;33% available</li> </ul>

# FEMA Readiness - National & Regional Teams



National/Regional Teams									
Resource	Status	Total	FMC Available		Partially Available	Not Available	Status	Comments	Rating Criterion
NWC		5	5	100%	0	0	Watch / Steady State		<ul style="list-style-type: none"> <li>• Green = FMC</li> <li>• Yellow = PMC</li> <li>• Red = NMC</li> </ul>
NRCC		2	2	100%	0	0	Not Activated		
HLT		1	1	100%	0	0	Activated		
DEST							Not Activated		
RRCCs		10	10	100%	0	0	Not Activated		
RWCs/MOCs		10	10	100%	0	0	Not Activated		



# FEMA

**FEMA's mission is to support our citizens and first responders to ensure that as a nation we work together to build, sustain, and improve our capability to prepare for, protect against, respond to, recover from, and mitigate all hazards.**