

The Disaster Center is dedicated to the idea that disaster mitigation is cost effective and individuals pursuing their own interest are the greatest potential force for disaster reduction.

Please consider making a small donation to the Disaster Center



When disaster mitigation is cost effective, we are on the road to bringing disasters to an end.



FEMA

Daily Operations Briefing

Sunday, June 26, 2016

8:30 a.m. EDT

Significant Activity: June 25-26



Significant Events: Severe Weather / Flooding in WV & VA

Tropical Activity:

- Atlantic – Tropical cyclone activity not expected during the next 48 hours
- Eastern Pacific – Disturbance 1: Low (0%) chance of development through 48 hours
- Central Pacific – No tropical cyclones expected through Monday evening

Significant Weather:

- Rain / thunderstorms – Southwest to Central Rockies & Plains, Lower/Middle Mississippi valleys to the Great Lakes, Ohio/Tennessee valleys to the Southeast
- Critical/Elevated Fire Weather conditions – None
- Red Flag Warnings – None
- Space Weather – No space weather storms observed in the past 24 hours, none predicted in the next 24 hours

Earthquake Activity: No significant activity

Declaration Activity:

- Major Disaster Declaration FEMA-4273-DR-West Virginia

Severe Weather/Flooding – WV & VA



Current Situation:

- Severe storms on June 22 brought torrential rains, tornadoes, high winds, and large hail across FEMA Region III. Flash flooding and flooding occurred across West Virginia and Virginia.

Impacts:

- 24 confirmed fatalities
- 18.5k customers are without power statewide *(DOE Eagle-I as of 4:45 a.m. EDT)*
- Mountaineer Gas has shut off service to 1,680 customers in 2 counties
- Over 22 municipal water systems damaged. Over 3,500 customers without water in 2 counties
- US 60 and US 119 closed in multiple locations; over 35 secondary roads closed; assessments and road clearing underway
- 3 nursing homes evacuated; Greenbrier Valley Medical Center on generator power
- 50 homes destroyed in Roane county

Response:

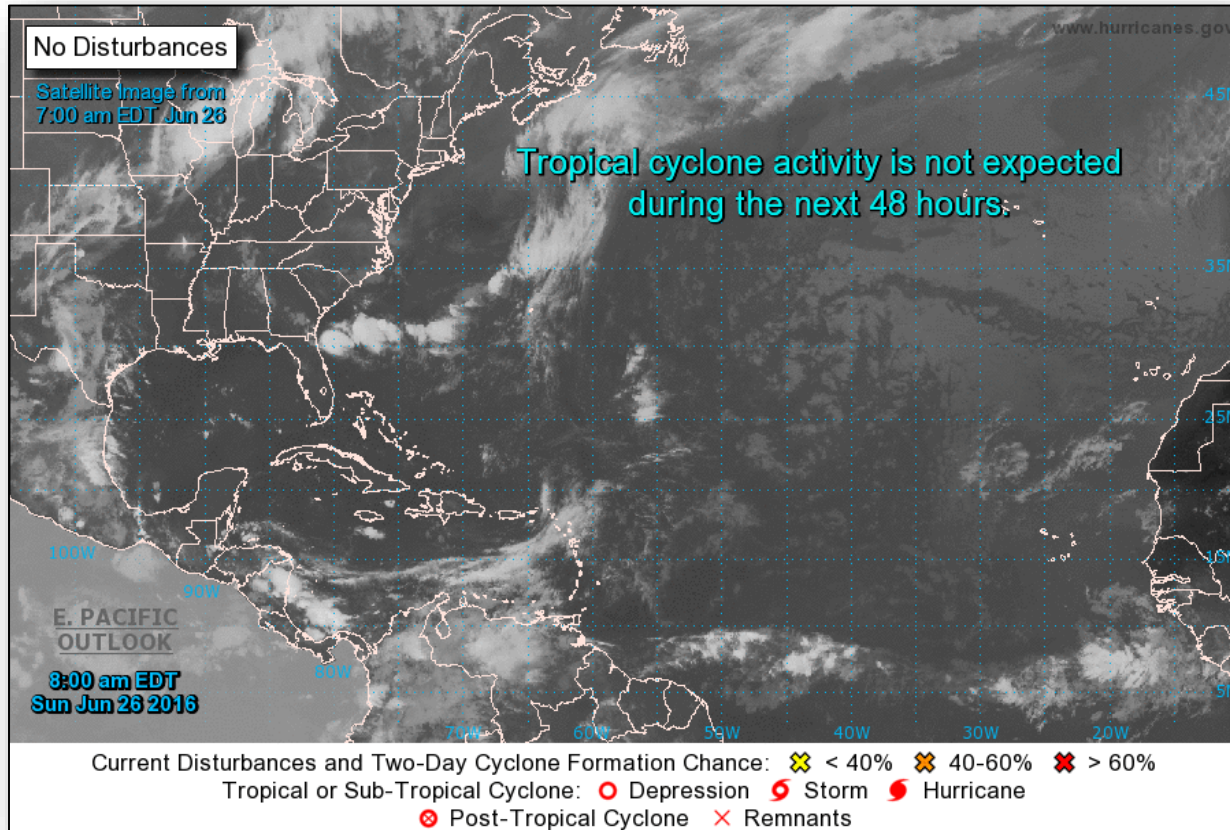
State and Local

- WV EOC at Full Activation; Governor declared a state of emergency for 44 counties
- 244 WV National Guard troops supporting
- 17 Shelters supporting 413 (+15) occupants in WV *(ARC midnight shelter count as of 6:45 am EDT June 25)*
- VA EOC has downgraded their posture to Monitoring

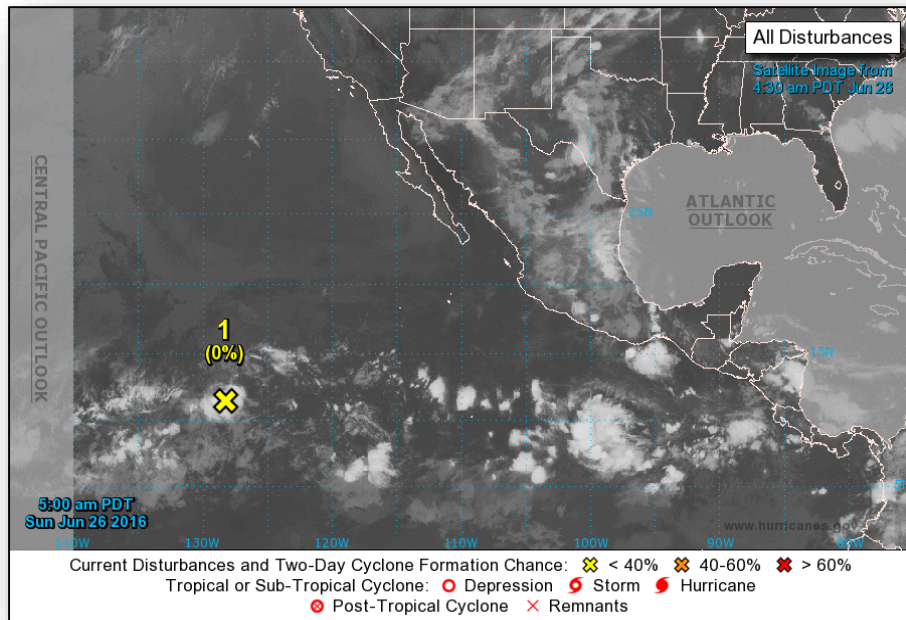
Federal

- The President approved Major Disaster Declaration FEMA-4273-DR-WV
- FEMA Region III RRCC not activated; RWC remains at Watch/Steady State
- FEMA Region III IMAT and MERS deployed

Tropical Outlook – Atlantic



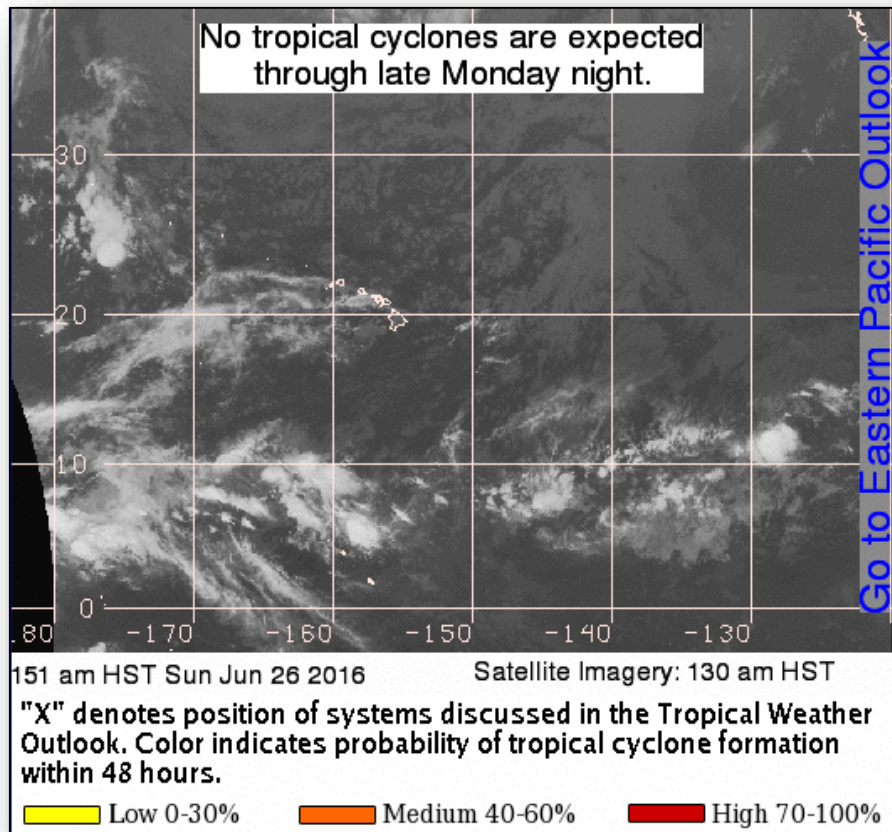
Tropical Outlook – Eastern Pacific



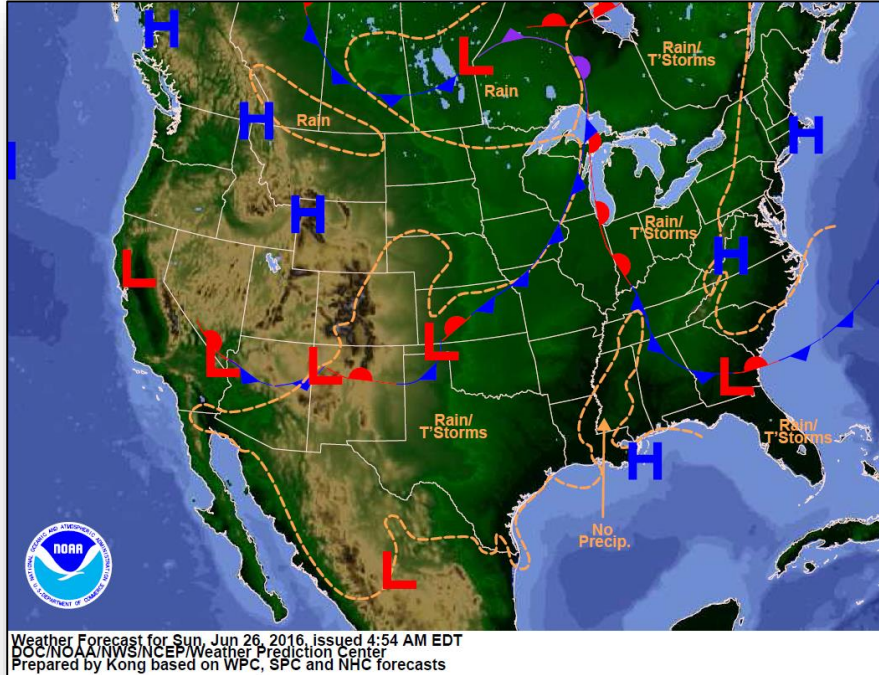
Disturbance 1: (As of 8:00 am EDT)

- Area of low pressure producing limited shower activity
- Located 1,450 miles SW of the southern tip of the Baja California Peninsula
- Moving westward at 15 mph
- Conditions not conducive for development, and tropical cyclone formation is unlikely
- Formation chance through 48 hours: Low (0%)
- Formation chance through 5 days: Low (0%)

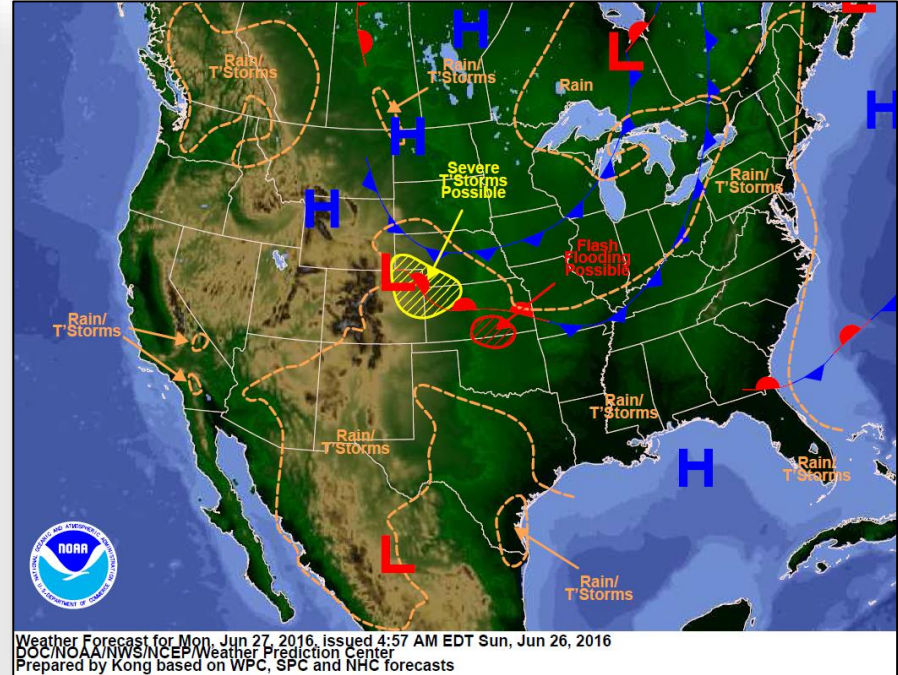
Tropical Outlook – Central Pacific



National Weather Forecast

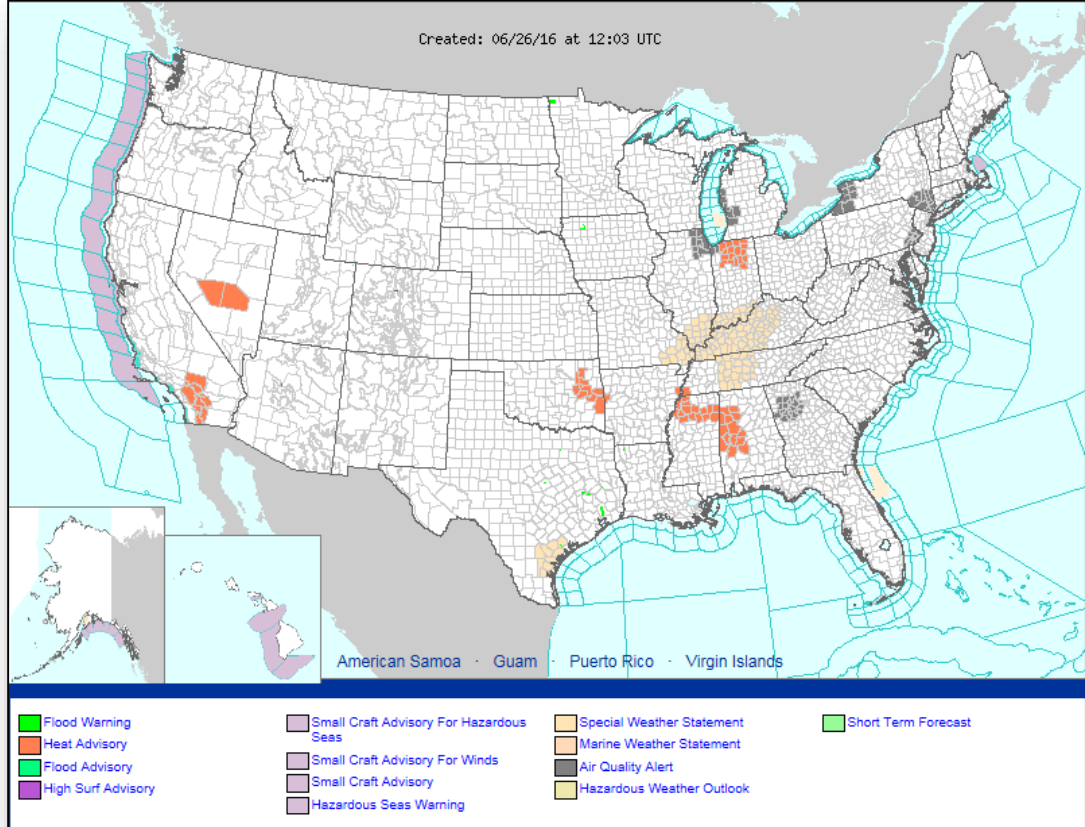


Today



Tomorrow

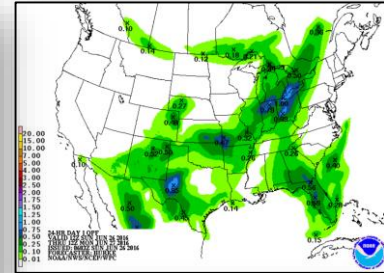
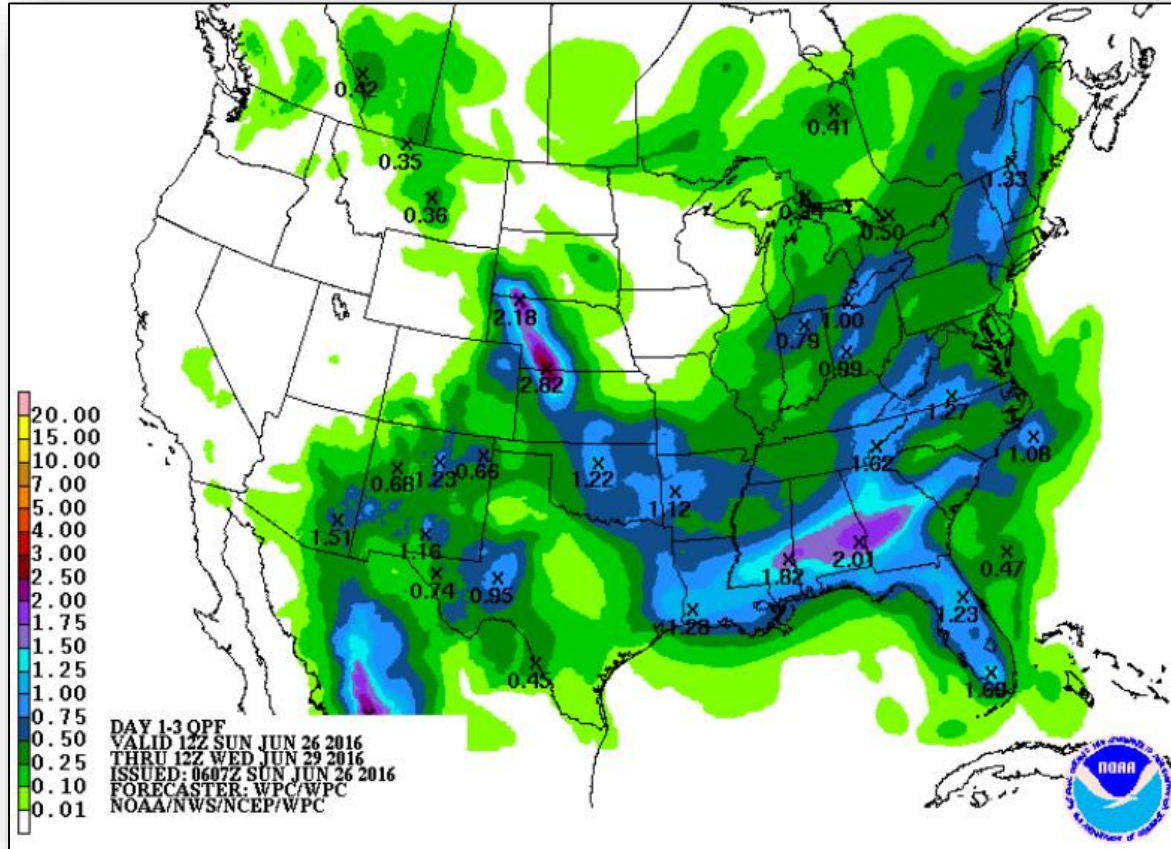
Active Watches/Warnings



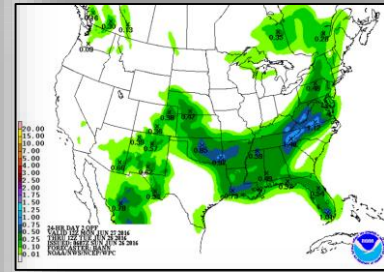
Precipitation Forecast, 1-3 Day



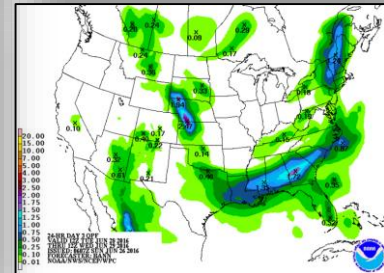
FEMA



Day 1

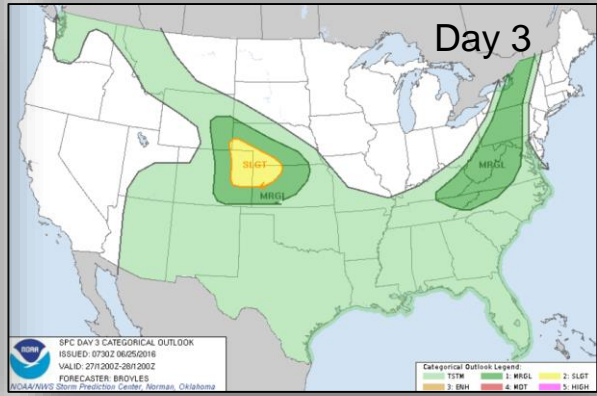
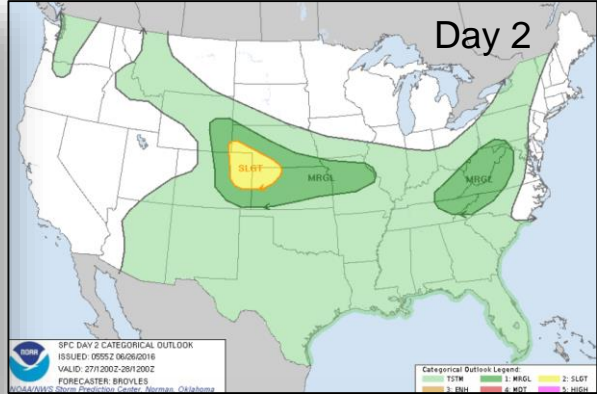
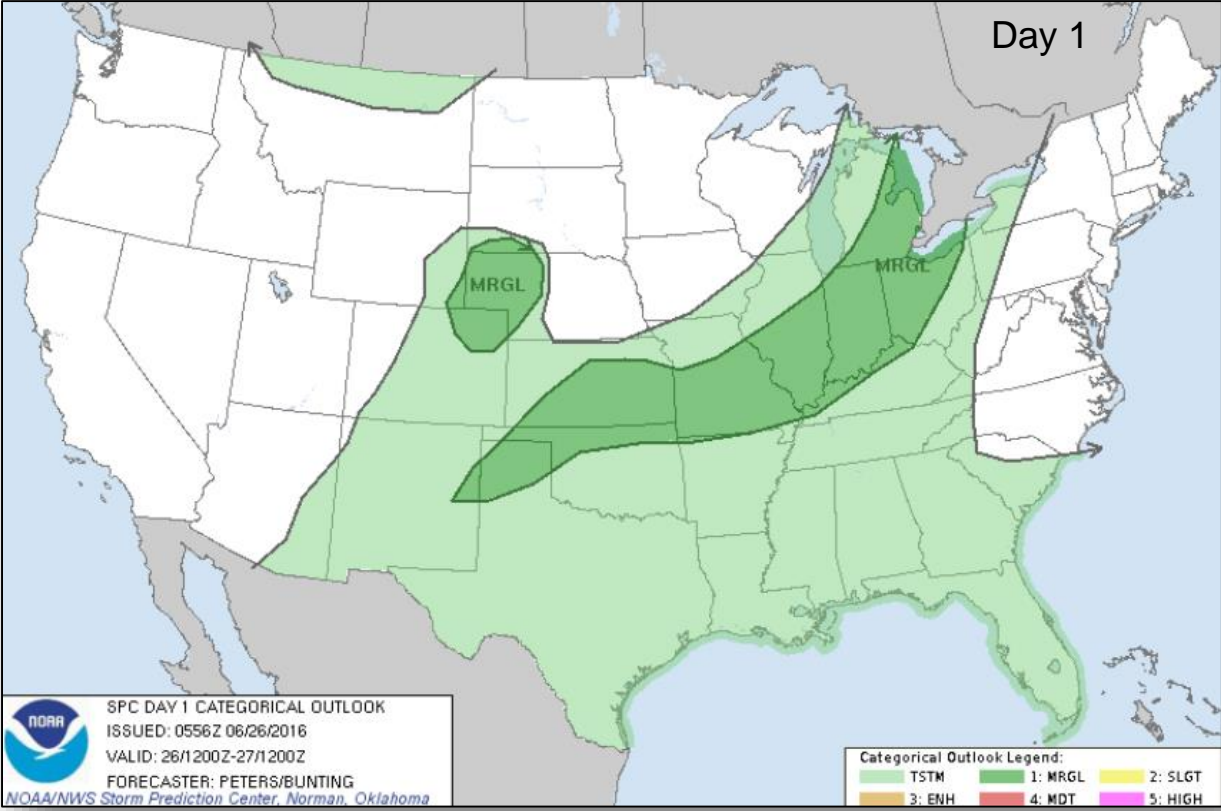


Day 2

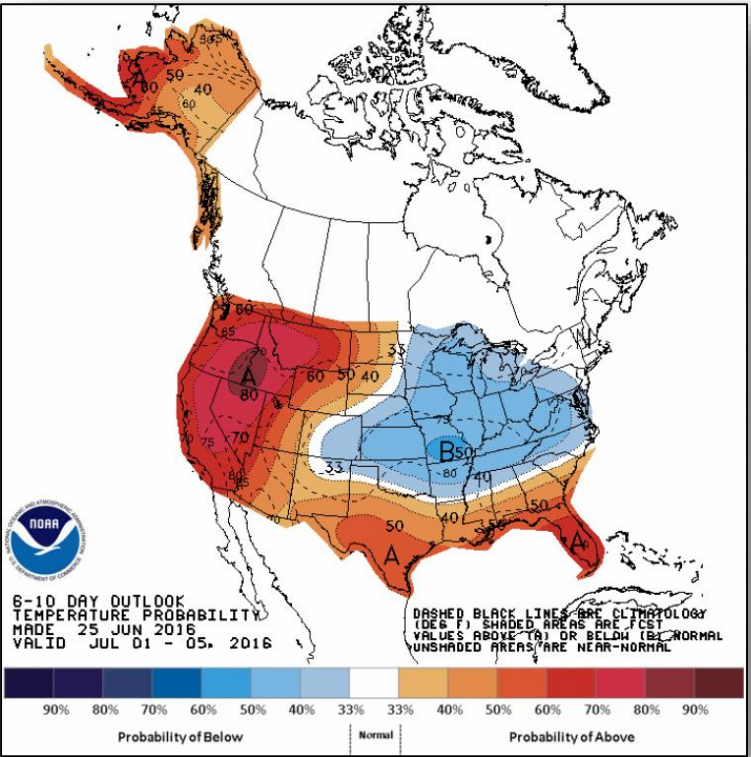


Day 3

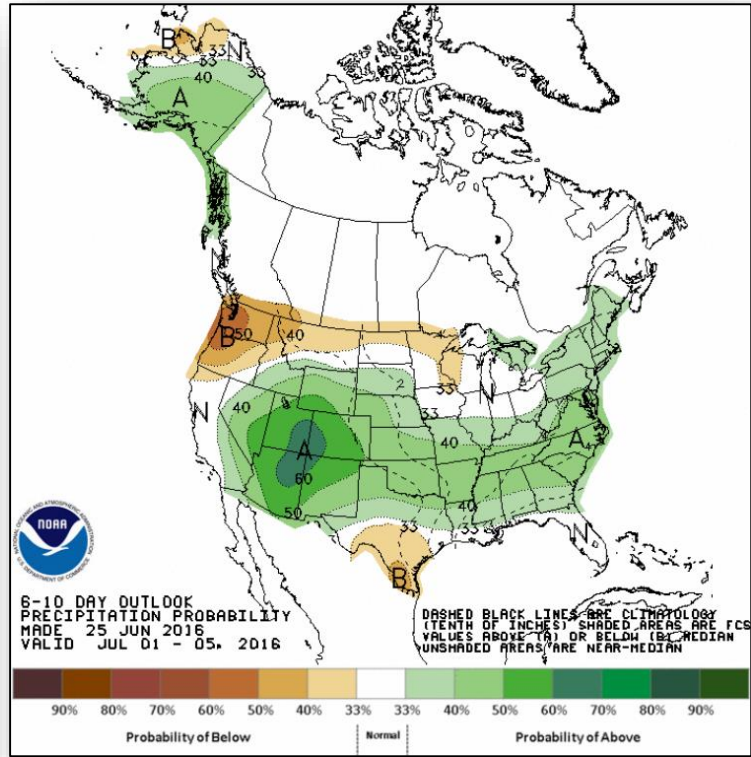
Severe Weather Outlook: Day 1 - 3



6-10 Day Outlooks



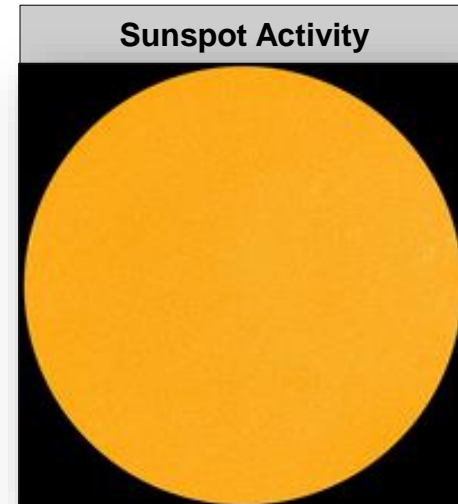
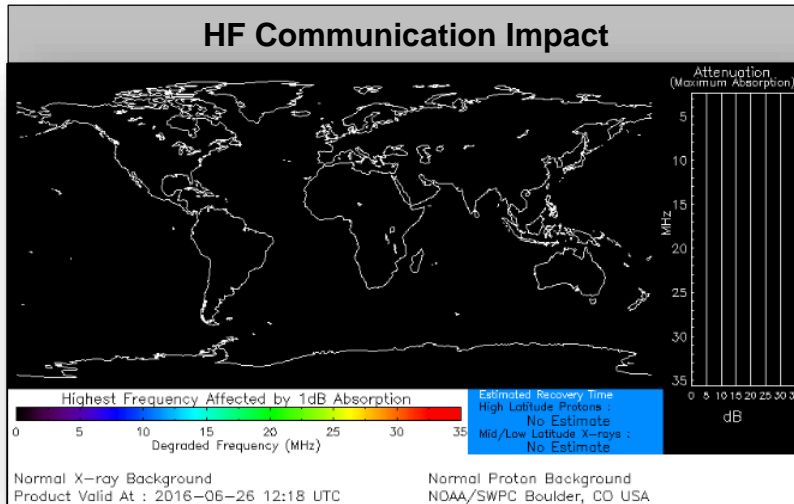
6-10 Day Temperature Probability



6-10 Day Precipitation Probability

Space Weather

	Past 24 Hours	Current	Next 24 Hours
Space Weather Activity	None	None	None
Geomagnetic Storms	None	None	None
Solar Radiation Storms	None	None	None
Radio Blackouts	None	None	None



Wildfire Summary



Fire Name (County)	FMAF #	Acres burned	% Contained	Evacuations (Residents)	Structures Threatened	Structures Damaged / Destroyed	Fatalities / Injuries
California (3)							
Border 3 (FINAL) (San Diego County)	FEMA-5128-FM-CA (Approved June 19)	7,609	75% (+15)	Lifted	None	1 home, 2 minor structures / 5 home, 11 minor structures	0 / 0
Fish (Los Angeles County)	FEMA-5129-FM-CA (Approved June 21)	4,085 (+18)	48% (+18)	Mandatory	344 homes, 5 commercial, 6 minor structures	0 / 0	0 / 3 (+2)
Erskine (Kern County)	FMAF-5131-FM-CA (Approved June 24)	36,810 (+6,810)	10% (+5)	Mandatory (2,700)	2,500 (+1,000) homes	75 homes / 200 (+50) homes	2 / 3
Utah (1)							
Saddle (Washington County)	FEMA-5130-FM-UT (Approved June 21)	1,193	5%	Voluntary / Mandatory (180)	500 homes, 5 commercial, 500 minor structures	0 / 0	0 / 2

Joint Preliminary Damage Assessments



Region	State / Location	Event	IA/PA	Number of Counties		Start – End
				Requested	Complete	
III	WV	Flooding June 22, 2016 and continuing	IA	7	0	6/27 – TBD
			PA	7	0	6/28 – TBD
VI	OK	Flooding June 1-12, 2016	IA	3	3	6/20 – 6/23
VII	KS	Severe Storms and Flooding May 22-31, 2016	PA	15	0	6/20 – TBD

Disaster Requests & Declarations



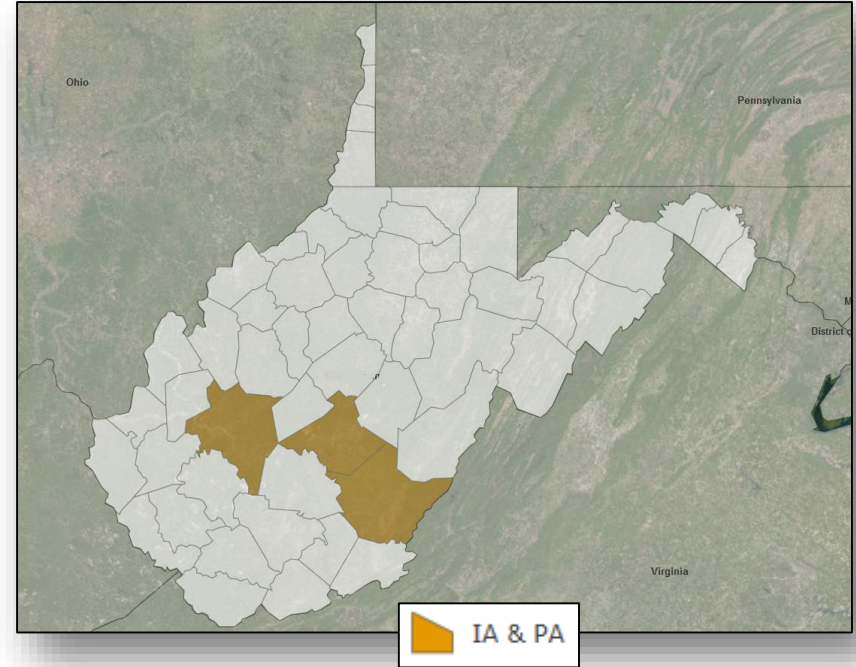
Declaration Requests in Process		Requests APPROVED (since last report)	Requests DENIED (since last report)
0	Date Requested	1	0
West Virginia – Severe storms, flooding, landslides, and mudslides June 22, 2016 and continuing	June 25, 2016	Declared June 25, 2016	

Major Disaster Declaration Approved – WV



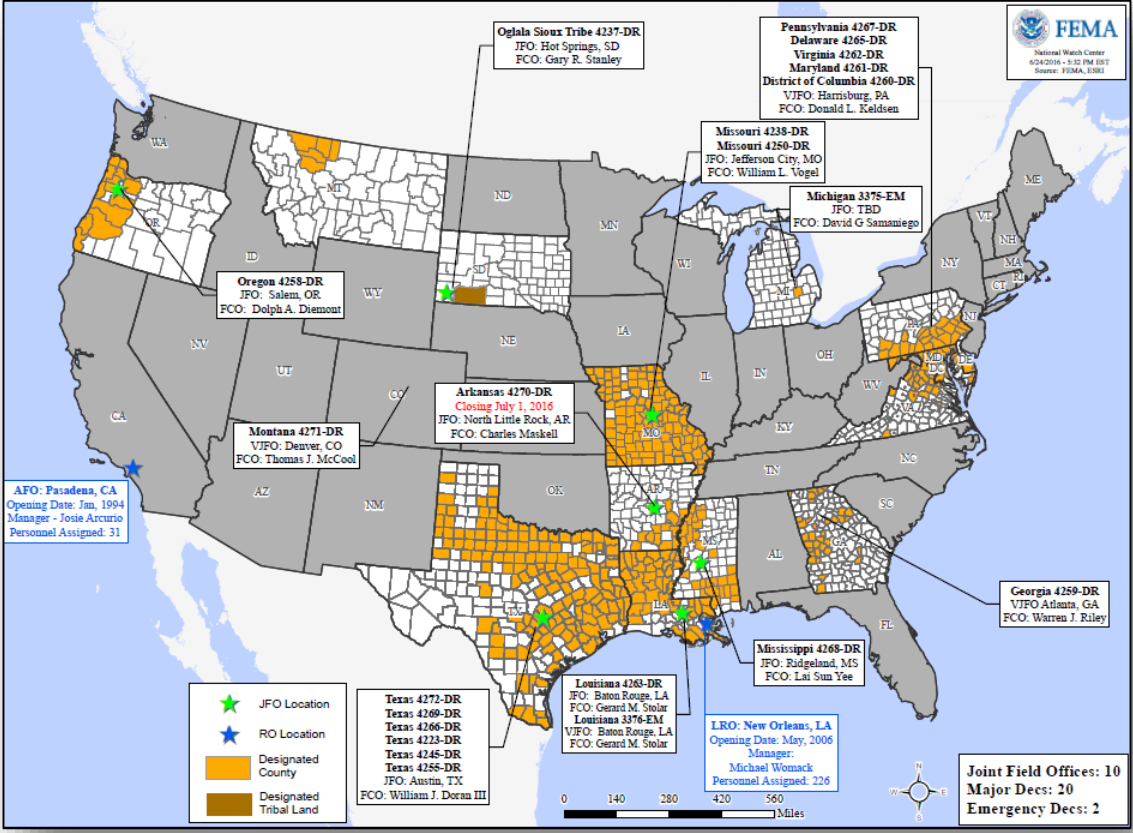
FEMA-4273-DR-WV

- On June 25, 2016, the President approved a Major Disaster Declaration for severe storms, flooding, landslides and mudslides occurring June 22, 2016 and continuing
- Provides:
 - Individual Assistance for 3 counties
 - Emergency protective measures (Category B) for 3 counties, including direct federal assistance, under the Public Assistance program
 - Hazard Mitigation statewide
- FCO is Albert Lewis



Public Assistance Categories							
A	B	C	D	E	F	G	H
Debris Removal	Emergency Protective Measures	Road Systems & Bridges	Water Control Facilities	Public Buildings & Contents	Public Utilities	Parks, Recreational Areas & Other Facilities	Fire Management

Open Field Offices as of June 26, 2016



FEMA Readiness – Deployable Teams/Assets



Deployable Teams/Assets									
Resource	Status	Total	FMC Available		Partially Available	Not Available	Detailed, Deployed, Activated	Comments	Rating Criterion
FCO	Yellow	33	15	45%	0	1	17		OFDC Readiness: FCO Green Yellow Red Type 1 3+ 2 1 Type 2 4+ 3 2 Type 3 4 3 2 FDRC 3 2 1
FDRC	Green	9	5	56%	0	0	4		
US&R	Green	28	27	96%	1	0	0	NJ TF-1 Partially Mission Capable	<ul style="list-style-type: none"> Green = Available/FMC Yellow = Available/PMC Red = Out-of-Service Blue = Assigned/Deployed
National IMAT	Green	3	3	100%	0	0	0		<ul style="list-style-type: none"> Green: 3 available Yellow: 1-2 available Red: 0 avail (<i>Individual N-IMAT red if 50% of Section Chiefs and/or Team Leader is unavailable for deployment.</i>)
Regional IMAT	Green	13	10	77%	0	0	3	Deployed: RIII: Deployed to WV (4273-WV) RV: Green – Returned from EM-3375-MI on June 22 RVI: Team 1 to TX (4266-TX) RVII: to TX (4272-TX)	<ul style="list-style-type: none"> Green: >6 teams available Yellow: 4 - 6 teams available Red: < 4 teams available R-IMAT also red if TL Ops/Log Chief is unavailable & has no qualified replacement
MERS Teams	Green	18	14	78%	0	0	4	Deployed: Denton: 3 teams to TX (4272-TX) Frederick: 1 team to WV (4273-WV)	<ul style="list-style-type: none"> Green = >66% available Yellow = 33% to 66% available Red = <33% available

FEMA Readiness – National/Regional Teams



National/Regional Teams									
Resource	Status	Total	FMC Available		Partially Available	Not Available	Status	Comments	Rating Criterion
NWC		5	5	100%	0	0	Watch / Steady State		<ul style="list-style-type: none"> • Green = FMC • Yellow = PMC • Red = NMC
NRCC		2	2	100%	0	0	Not Activated		
HLT		1	N/A	N/A	0	0	Activated		
DEST							Not Activated		
RRCCs		10	10	100%	0	0	Not Activated		
RWCs/MOCs		10	10	100%	0	0	Not Activated	RVI RWC returned to Watch/Steady State	



FEMA

FEMA's mission is to support our citizens and first responders to ensure that as a nation we work together to build, sustain, and improve our capability to prepare for, protect against, respond to, recover from, and mitigate all hazards.