

The Disaster Center is dedicated to the idea that disaster mitigation is cost effective and individuals pursuing their own interest are the greatest potential force for disaster reduction.

Please consider making a small donation to the Disaster Center



When disaster mitigation is cost effective, we are on the road to bringing disasters to an end.



FEMA

Daily Operations Briefing

Friday, June 24, 2016

8:30 a.m. EDT

Significant Activity: June 23-24



Significant Events: Severe Weather / Flooding in WV & VA

Tropical Activity:

- Atlantic – Disturbance 1: Low (10%) chance of development through 48 hours
- Eastern Pacific – No new tropical cyclones expected during the next 48 hours
- Central Pacific – No tropical cyclones expected through Saturday evening

Significant Weather:

- Strong to severe thunderstorms – Northern to Central Plains, Mid-Atlantic and Carolinas to Middle Mississippi Valley
- Flash flooding – Northern Plains and Middle Mississippi Valley to the Ohio Valley and Mid-Atlantic
- Excessive heat – portions of AZ
- Above average temperatures across much of the Central U.S.
- Enhanced fire weather conditions – southern California, Northern/Central Plains and Rockies
- Red Flag Warnings – CA, UT, CO, MT, WY, & SD
- Space Weather – No space weather storms observed in the past 24 hours, no storms predicted in the next 24 hours

Earthquake Activity: No significant activity

Declaration Activity: FEMA-5131-FM-CA for the Erskine Fire

Severe Weather/Flooding – WV & VA



Situation:

Severe storms brought torrential rains, tornadoes, high winds, and large hail across Region III. Flash flooding and flooding was seen primarily across West Virginia and Virginia where up to 12 inches of rain fell in 24-hours.

Impacts:

West Virginia

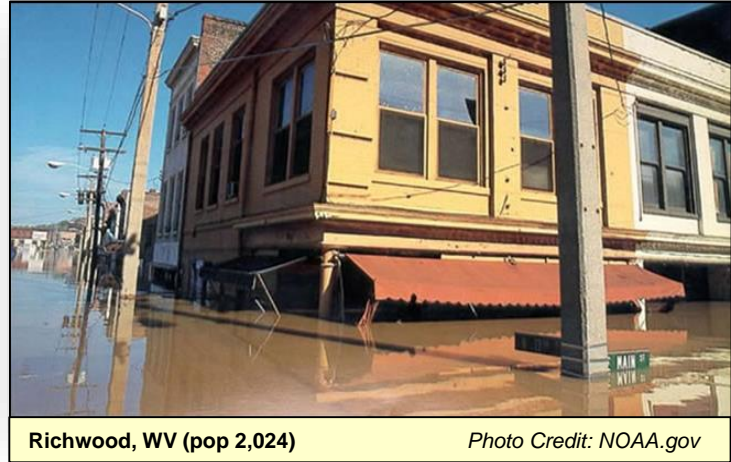
- 4 confirmed fatalities; 1 missing / no injuries reported
- Mud/land slides closed several roads including I-79 (reopened 11pm ET June 23)
- Over 67,000 customers without power
- Evacuations in Richwood (pop 2,024)

Virginia

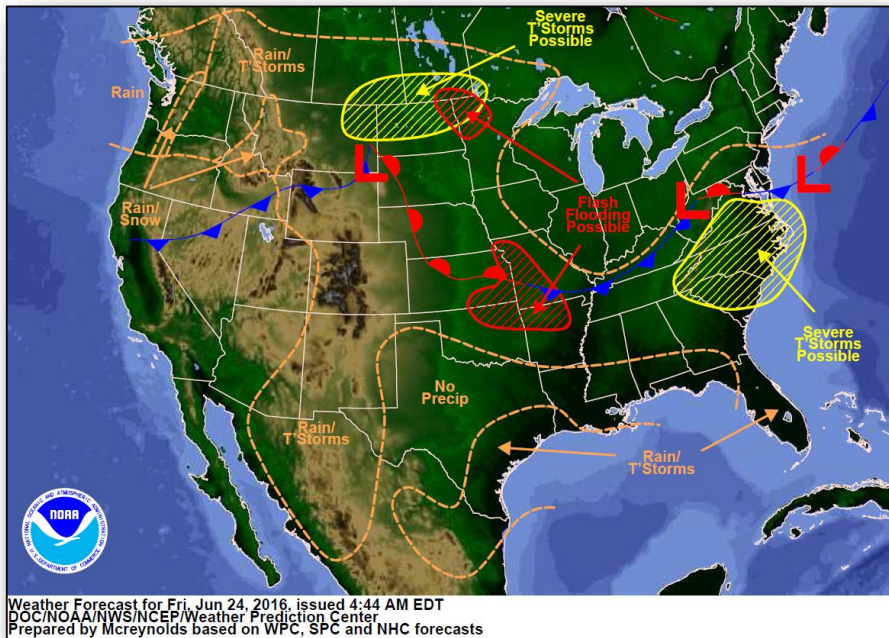
- Numerous road closures, including I-64, due to flooding and debris
- Over 8,000 customers without power
- Evacuations in Covington (pop 5,818) as the Jackson River reached record levels

Response:

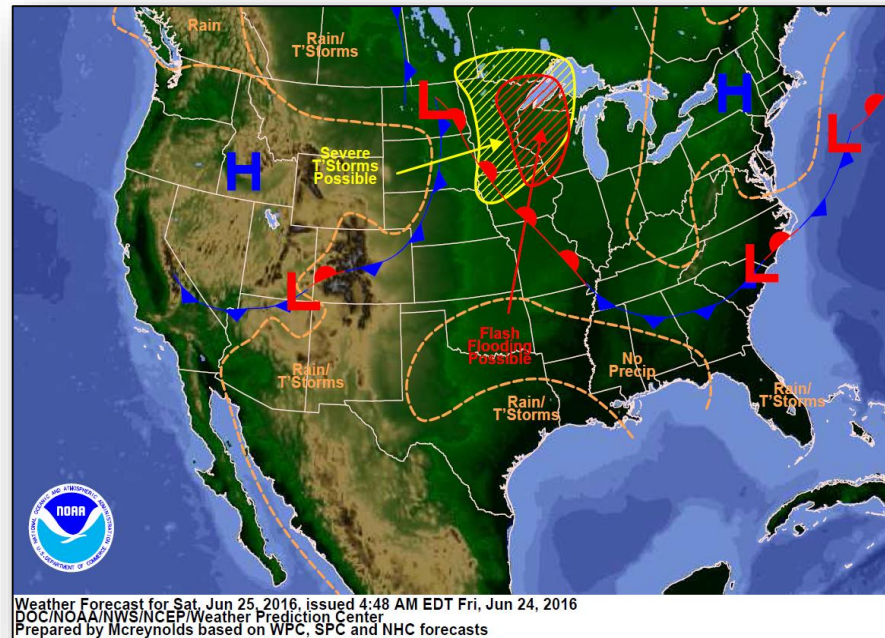
- VA EOC at Full Activation; VA Governor declared a State of Emergency
- WV EOC at Full Activation; WV Governor declared a State of Emergency
- Swift Water Rescues ongoing in WV & VA
- Shelters: WV – 3 shelters/21 occupants; VA – 4 shelters / 18 occupants
- FEMA Region III IMAT deployed to WV
- FEMA Region III RRCC not activated; RWC remains at Watch/Steady State
- FEMA NRCC not activated; NWC at Watch/Steady State



National Weather Forecast



Today

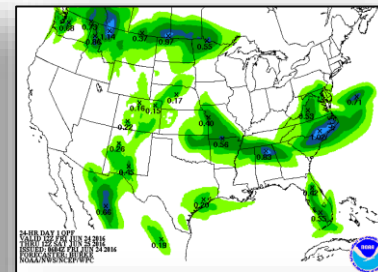
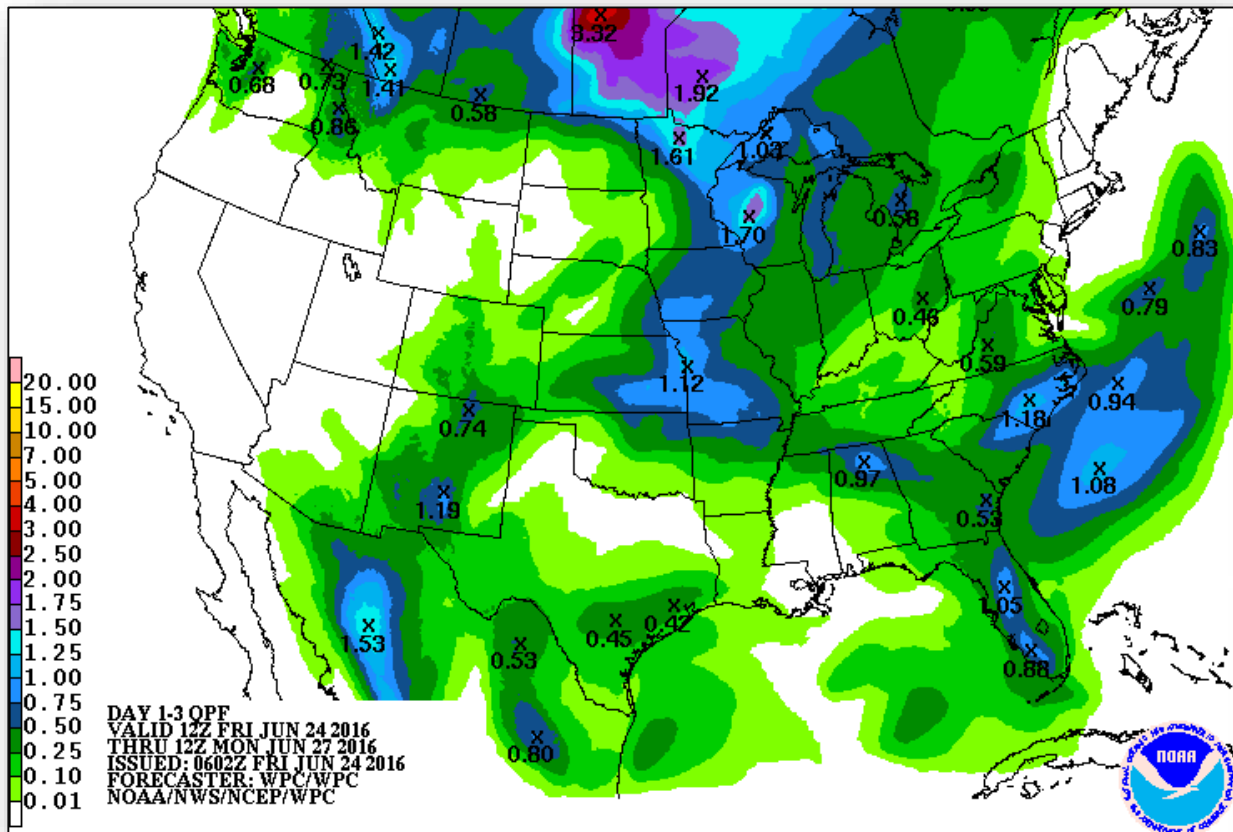


Tomorrow

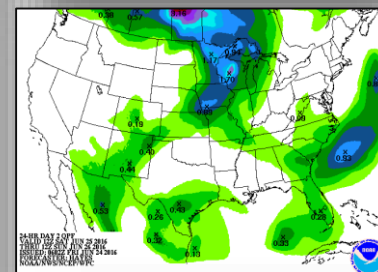
Precipitation Forecast, 1-3 Day



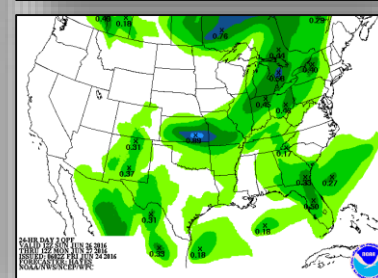
FEMA



Day 1

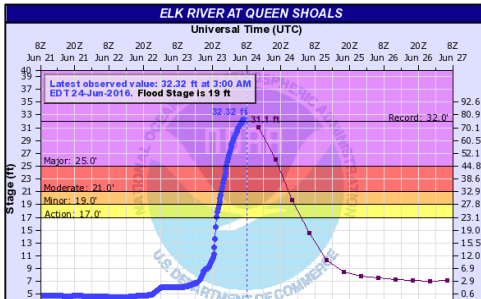


Day 2



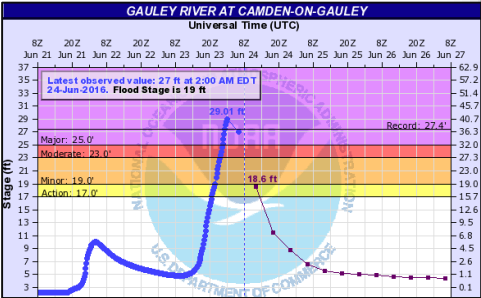
Day 3

Flash Flood – Observed Rainfall (past 24-hours)



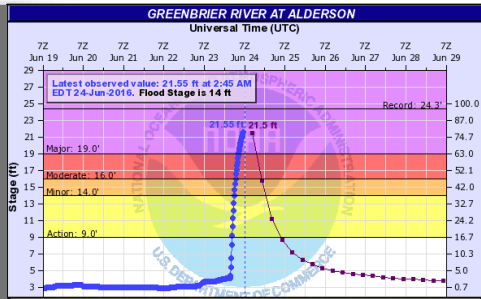
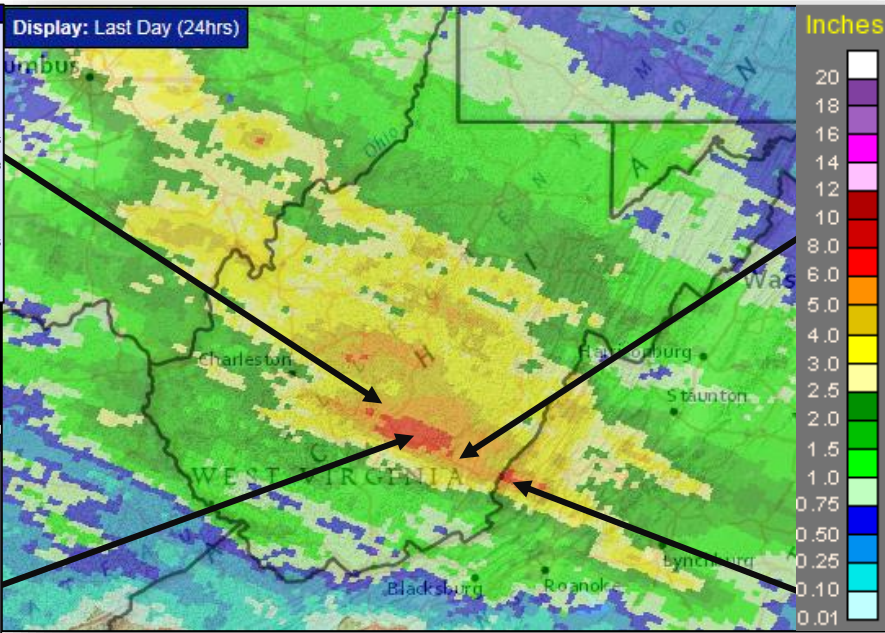
Elk River @ Queen Shoals

- Record peak level at 32.3 feet (former level 32")
- Clendenin (pop. 1,202) flooded
- 1st floor flooding of many businesses & homes



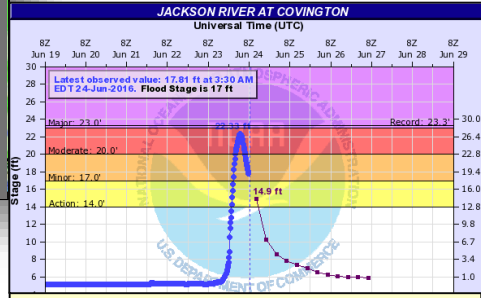
Gauley River @ Camden-on-Gauley, WV:

- Population of 162
- Peaked at 29.1 ft (former level 27.4')
- Virtually all buildings are flooded at 25 ft



Greenbrier River @ Alderson, WV (pop 1,180)

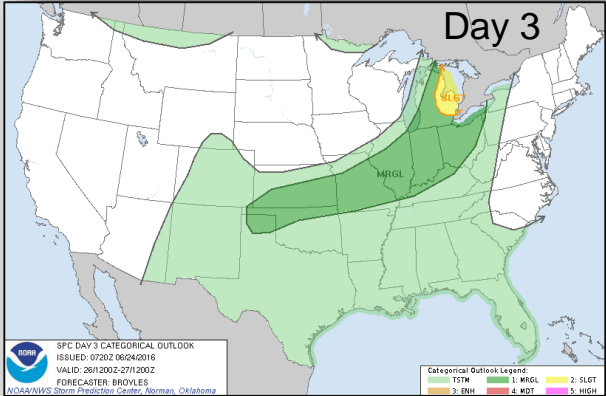
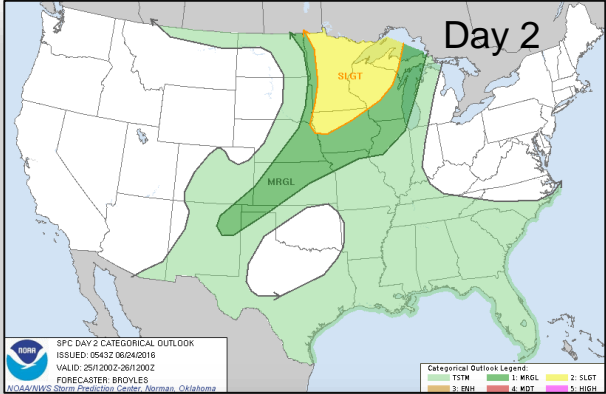
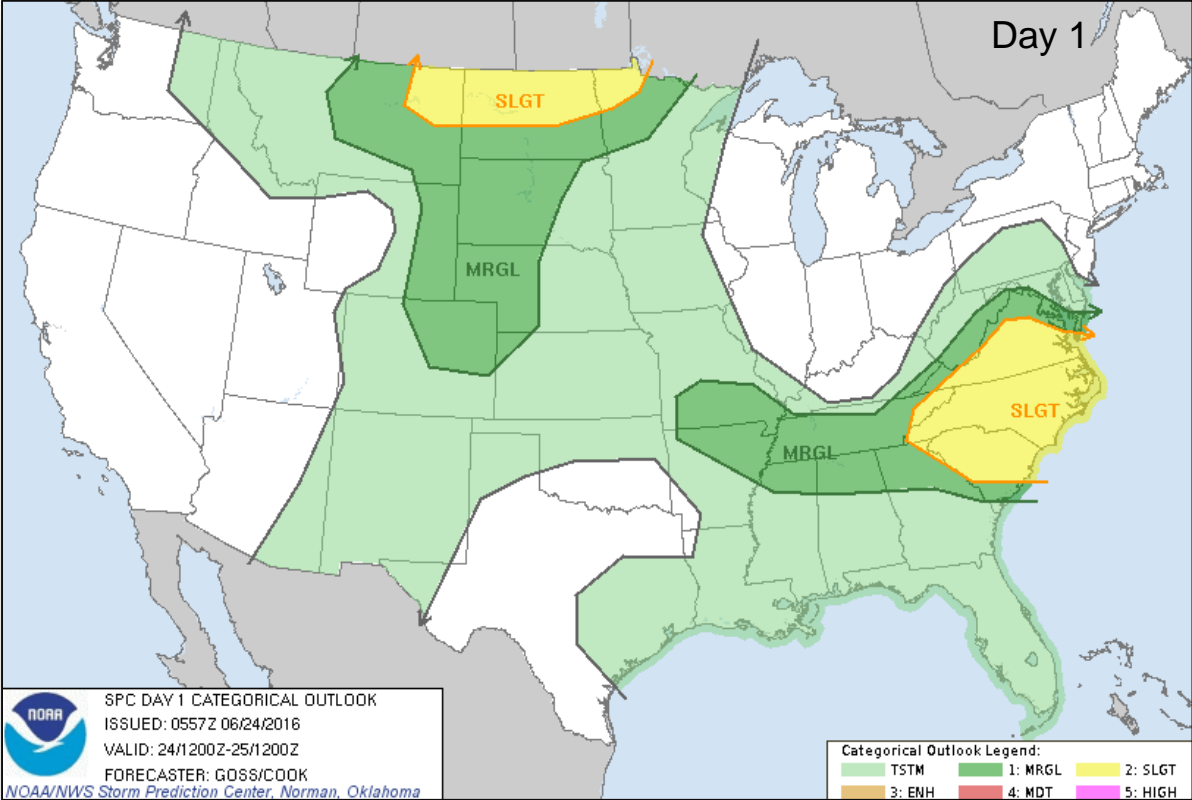
- Peaked near flood stage at 21.55 feet
- Much of downtown flooded
- Highway closure



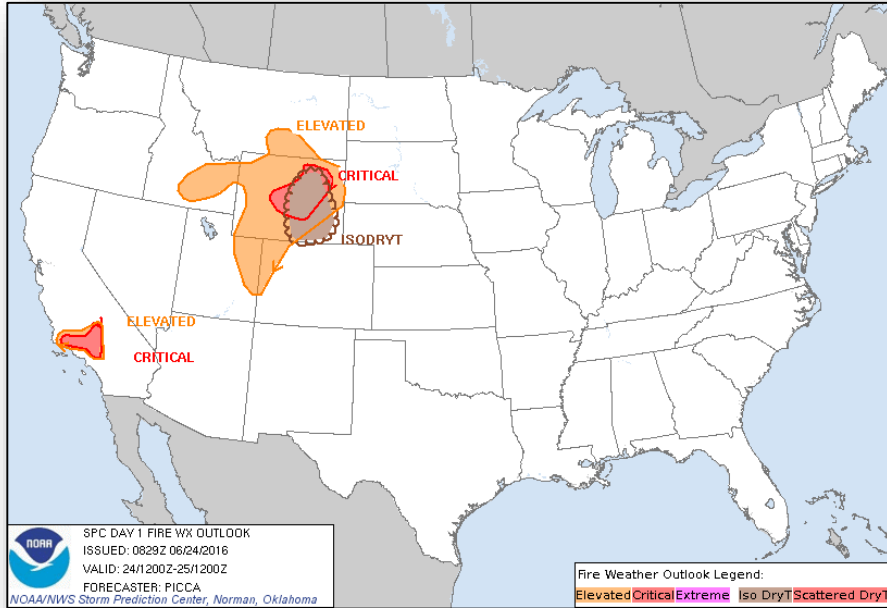
Jackson River @ Covington, VA (pop 5,961)

- Peaked near flood stage at 22.3 feet
- Most of downtown flooded
- 2-Shelters established until water recedes

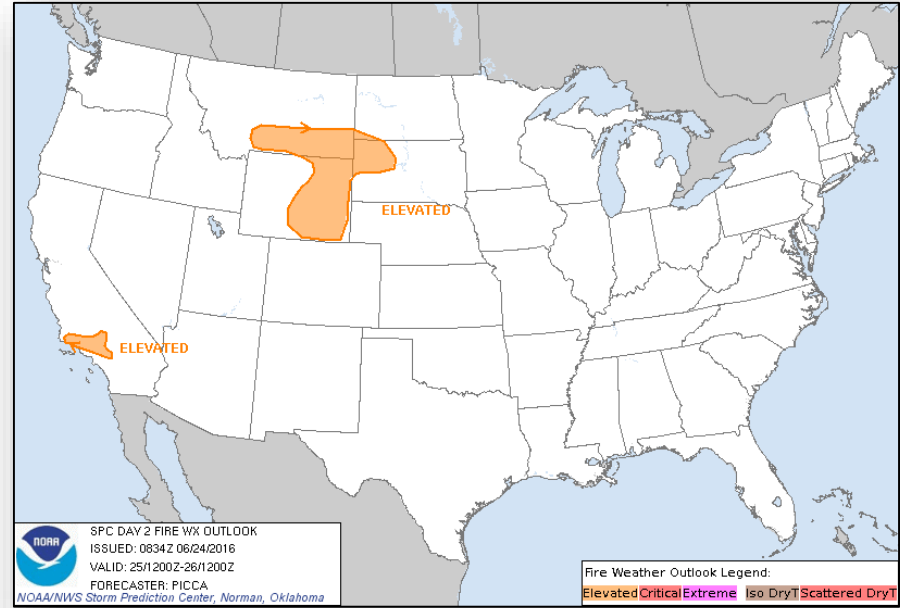
Severe Weather Outlook: Day 1 - 3



Fire Weather Outlook



Day 1

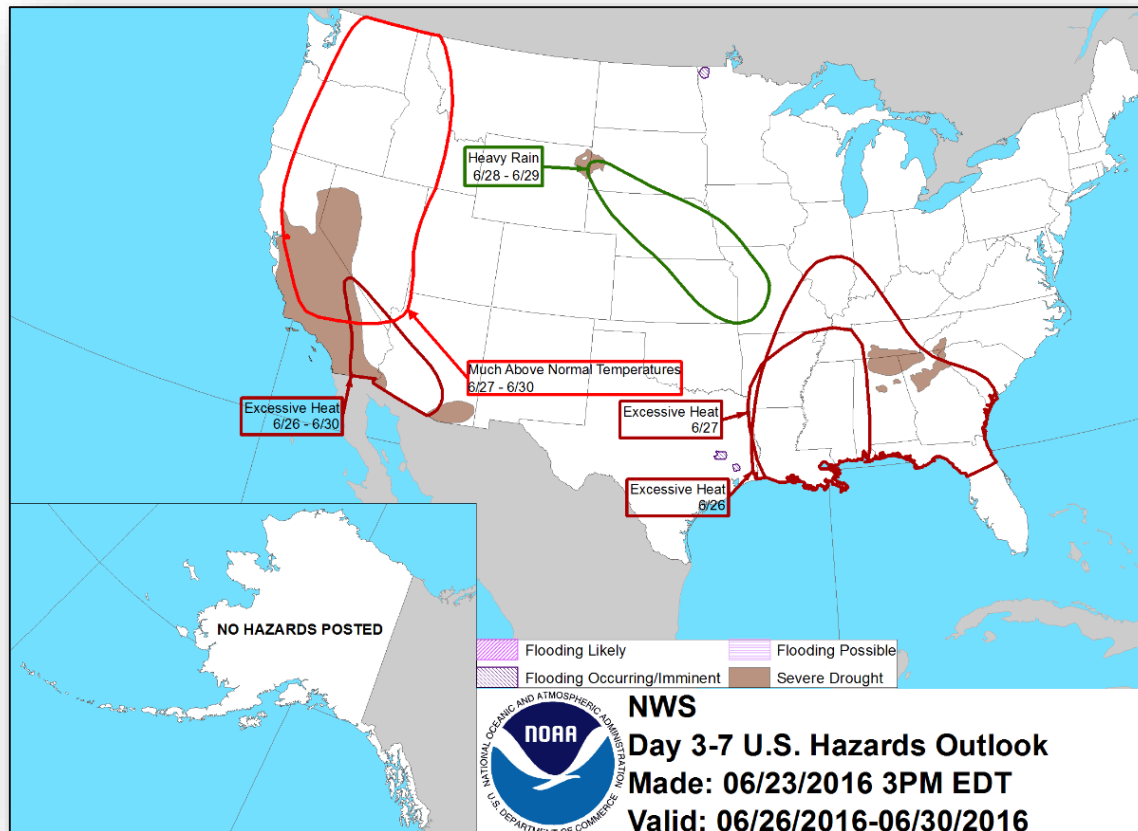


Day 2

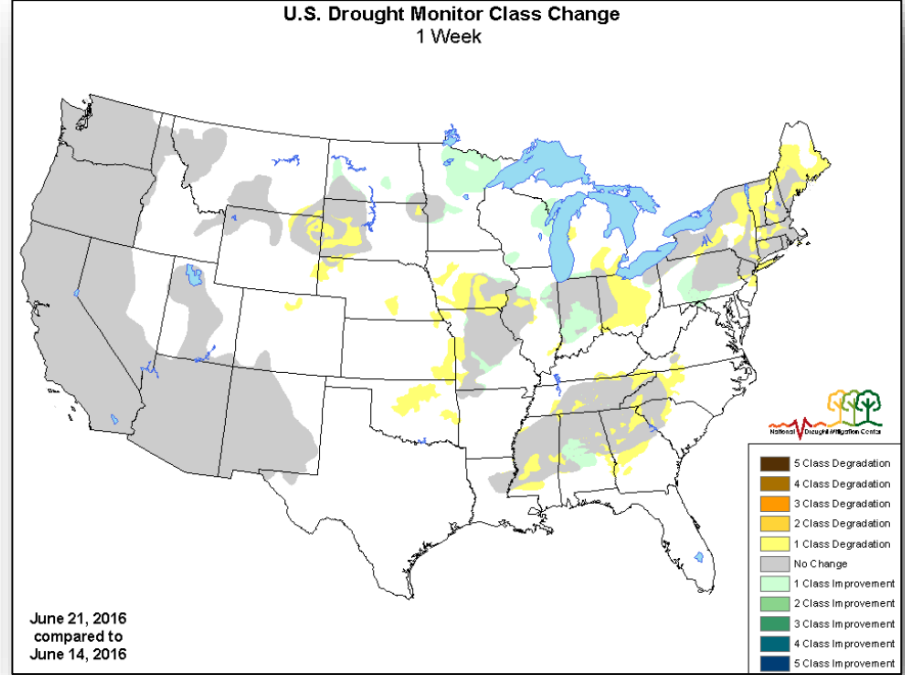
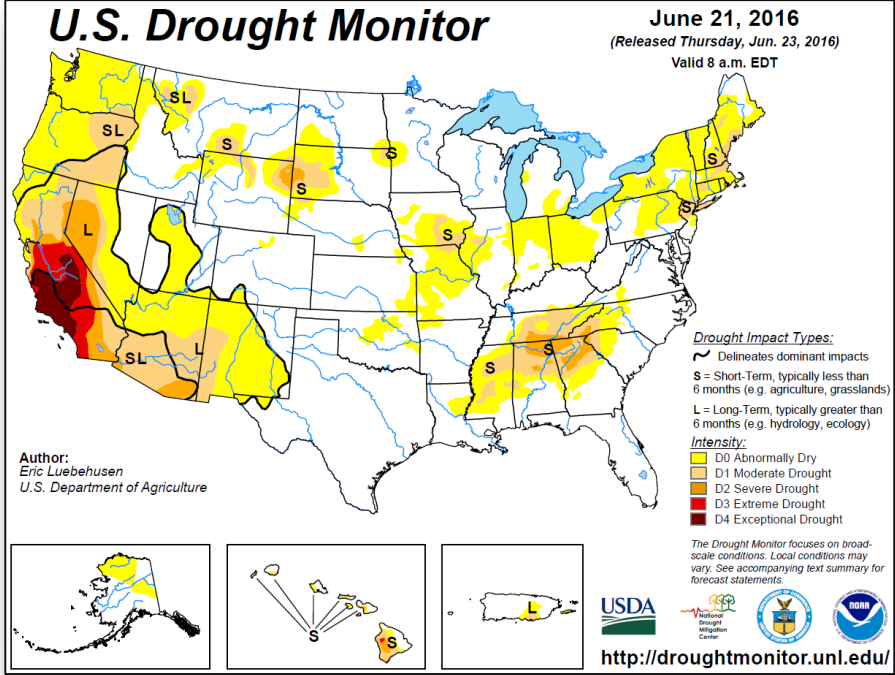
Hazard Outlook, June 26-30



FEMA



U.S. Drought Monitor

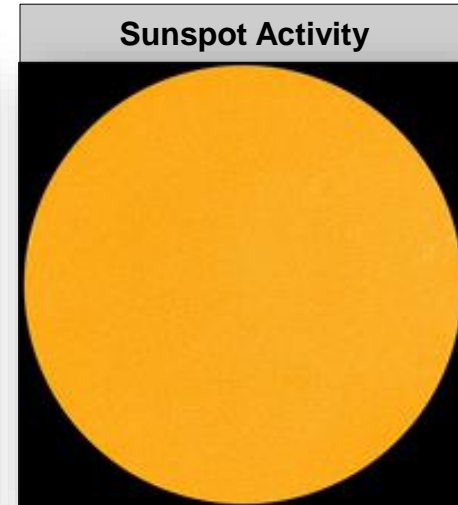
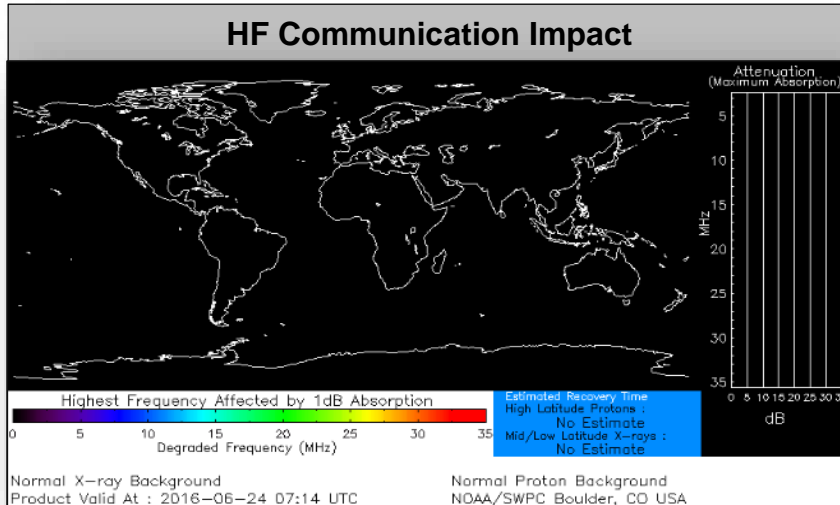


Space Weather

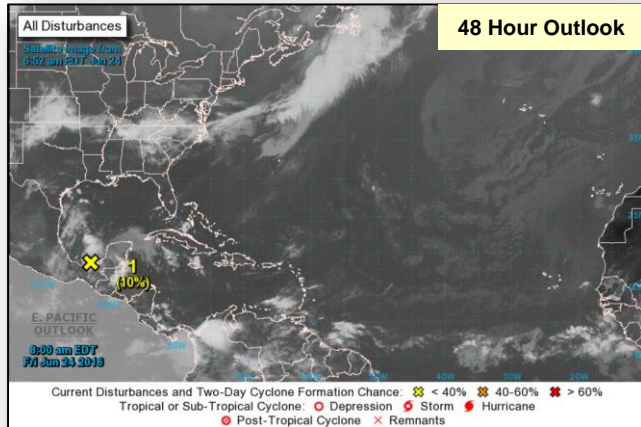


FEMA

	Past 24 Hours	Current	Next 24 Hours
Space Weather Activity	None	None	None
Geomagnetic Storms	None	None	None
Solar Radiation Storms	None	None	None
Radio Blackouts	None	None	None

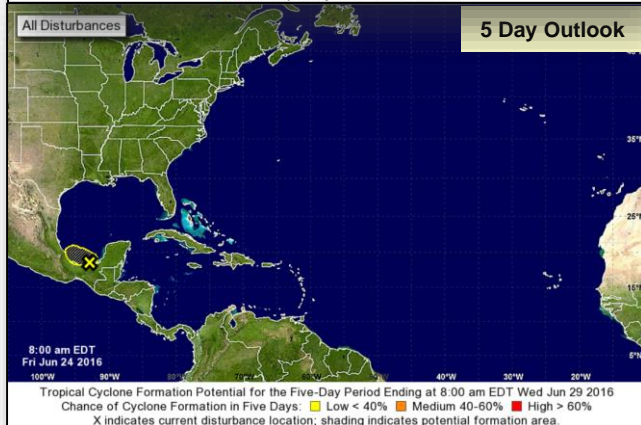


Tropical Outlook – Atlantic



Disturbance 1:

- Disorganized showers and thunderstorms continue over the Bay of Campeche in association with a broad area of low pressure
- System has become less organized since yesterday
- Significant development of the low is not expected before it moves inland over eastern Mexico on Saturday
- Formation chance through 48 hours: Low (10%)
- Formation chance through 5 days: Low (10%)



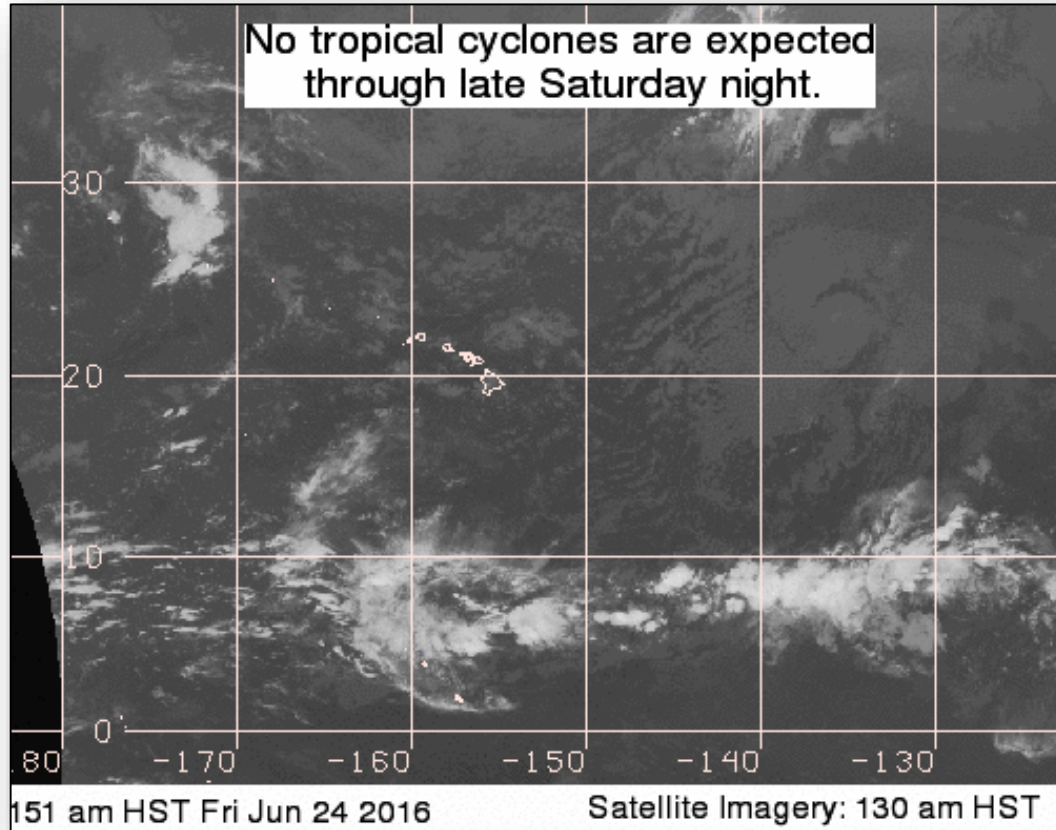
Tropical Outlook – Eastern Pacific



Disturbance 1:

- Area of low pressure expected to form late this weekend
- Located well to the southwest of the southern tip of the Baja California peninsula
- Some slow development possible by early next week
- Moving W or WNW at 10 mph
- Formation chance through 48 hours: Low (0%)
- Formation chance through 5 days: Low (20%)

Tropical Outlook – Central Pacific



Wildfire – California



Fire Name	Location	Acres burned	% Contained	Est. Full Containment	FMAG	Structures Lost / Threatened	Fatalities / Injuries
Erskine	Kern County	8,000	0	Unknown	FMAG-5131-FM-CA (Approved June 24)	100 / 1,500 (homes)	0 / 3

Current Situation

- Fire started on June 23, 2016 and spread quickly
- Winds are currently blowing fire towards homes
- Over 100 homes have been destroyed & 1,500 threatened
- Critical Infrastructure:
 - 4 businesses, a fire station, 2 schools, a post office, archeological sites, local telecom infrastructure, and drinking water infrastructure from Lake Isabella
- Local hospital (27-beds) evacuated to local high school
- 2,543 customers without power
- Mandatory evacuations in effect for 2,700 people
- Three minor injuries to firefighters for smoke inhalation
- 1 shelter open with 132 occupants
- CA EOC remains at Partial Activation (drought)



Wildfire Summary



Fire Name (County)	FMAG #	Acres burned	% Contained	Evacuations (Residents)	Structures Threatened	Structures Damaged / Destroyed	Fatalities / Injuries
California (3)							
Border 3 (San Diego County)	FEMA-5128-FM-CA (Approved June 19)	7,358 (+518)	35% (+15)	Mandatory (500)	200 (-700) Homes	1 / 5 homes, 13 minor structures	0 / 0
*Fish (Los Angeles County)	FEMA-5129-FM-CA (Approved June 21)	4,100 (+335)	15%	Mandatory (1,376)	344 (-514) Homes	0 / 9	0 / 0
Erskine (Kern County)	FMAG-5131-FM-CA (Approved June 24)	8,000	0%	Mandatory (2,700)	1,500 homes	0 / 100 homes	0 / 3
Utah (1)							
Saddle (Washington County)	FEMA-5130-FM-UT (Approved June 21)	896 (+73)	0%	Mandatory (180)	500 (+300) Homes	0 / 0	0 / 2

* The Fish and Reservoir fires were referred to as the San Gabriel Complex. The complex fire has been reduced to the Fish Fire only

FMAG Requests and Declarations



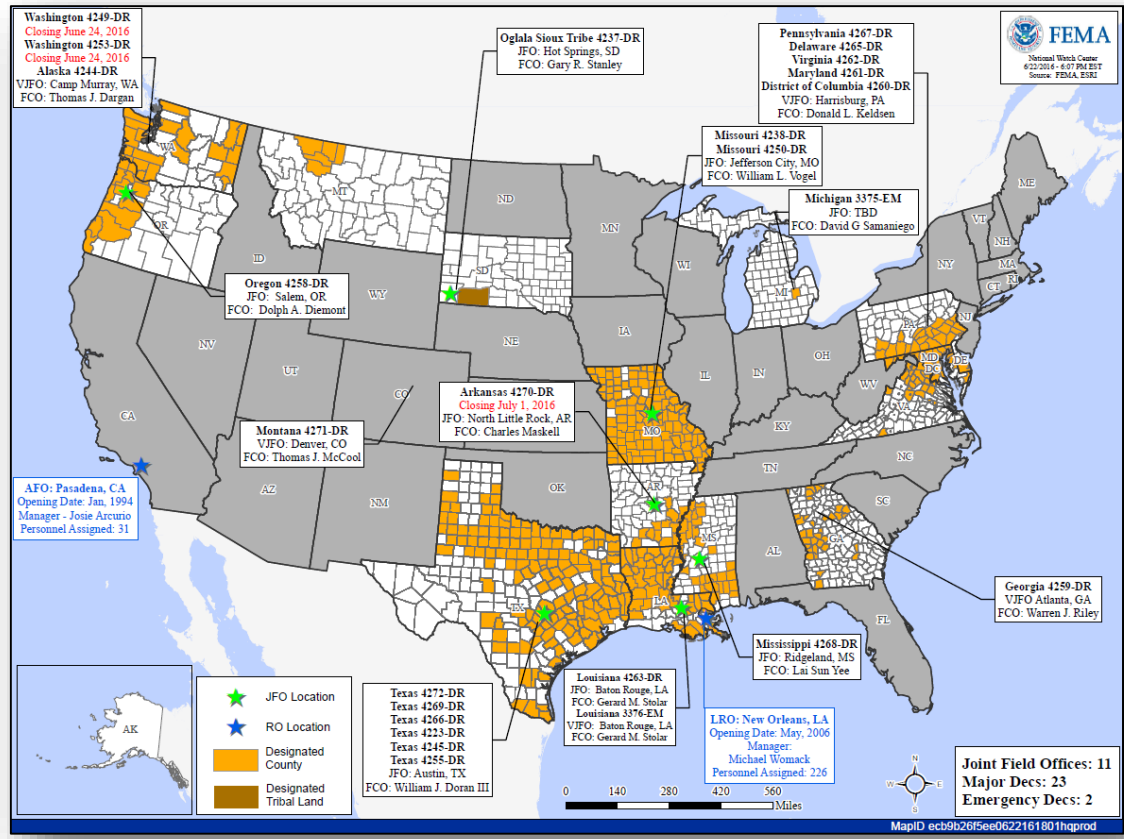
Action (since last report)		Total	FMAG No. and State		
Requests DENIED		0			
Requests APPROVED		1	FMAG-5131-FM-CA (Erskine Fire)		
Approved FMAG Data					
Year	Current YTD	MTD	* Monthly Average	Cumulative Acres Burned YTD	Cumulative Denied FMAGs YTD
2016	17	8	2	169,462	2
Year	Total Previous FY	** Yearly Average		Total Acres Burned Previous Year	Total Denied FMAGs Previous Year
2015	33	36		250,658	2
* Reflects the 3-year average for current month/ ** Reflects 3-year total average					

Joint Preliminary Damage Assessments



Region	State / Location	Event	IA/PA	Number of Counties		Start – End
				Requested	Complete	
VI	OK	Flooding June 1-12, 2016	IA	4	1	6/20 – TBD
VII	KS	Severe Storms and Flooding May 22-31, 2016	PA	15	0	6/20 – TBD

Open Field Offices as of June 24, 2016



FEMA Readiness – Deployable Teams/Assets



Deployable Teams/Assets									
Resource	Status	Total	FMC Available		Partially Available	Not Available	Detailed, Deployed, Activated	Comments	Rating Criterion
FCO	Yellow	33	15	45%	0	1	17		OFDC Readiness: FCO Green Yellow Red Type 1 3+ 2 1 Type 2 4+ 3 2 Type 3 4 3 2 FDRC 3 2 1
FDRC	Green	9	5	56%	0	0	4		
US&R	Green	28	27	96%	1	0	0	NJ TF-1 Partially Mission Capable	<ul style="list-style-type: none"> Green = Available/FMC Yellow = Available/PMC Red = Out-of-Service Blue = Assigned/Deployed
National IMAT	Green	3	3	100%	0	0	0		<ul style="list-style-type: none"> Green: 3 available Yellow: 1-2 available Red: 0 avail (<i>Individual N-IMAT red if 50% of Section Chiefs and/or Team Leader is unavailable for deployment.</i>)
Regional IMAT	Green	13	10	77%	0	0	3	Deployed: RV: to MI (3375-MI) RVI: Team 1 to TX (4266-TX) RVII: to TX (4272-TX)	<ul style="list-style-type: none"> Green: >6 teams available Yellow: 4 - 6 teams available Red: < 4 teams available <i>R-IMAT also red if TL Ops/Log Chief is unavailable & has no qualified replacement</i>
MERS Teams	Green	18	15	75%	0	0	3	Deployed: Denton: 2 teams to TX (4272-TX) Bothell: 1 team to HI	<ul style="list-style-type: none"> Green = >66% available Yellow = 33% to 66% available Red = <33% available

FEMA Readiness – National/Regional Teams



National/Regional Teams									
Resource	Status	Total	FMC Available		Partially Available	Not Available	Status	Comments	Rating Criterion
NWC		5	5	100%	0	0	Watch / Steady State		<ul style="list-style-type: none"> • Green = FMC • Yellow = PMC • Red = NMC
NRCC		2	2	100%	0	0	Not Activated		
HLT		1	N/A	N/A	0	0	Activated		
DEST							Not Activated		
RRCCs		10	10	100%	0	0	Not Activated		
RWCs/MOCs		10	10	100%	0	0	Activated	Region VI RWC Enhanced Watch (day shift only)	



FEMA

FEMA's mission is to support our citizens and first responders to ensure that as a nation we work together to build, sustain, and improve our capability to prepare for, protect against, respond to, recover from, and mitigate all hazards.