

The Disaster Center is dedicated to the idea that disaster mitigation is cost effective and individuals pursuing their own interest are the greatest potential force for disaster reduction.

Please consider making a small donation to the Disaster Center



When disaster mitigation is cost effective, we are on the road to bringing disasters to an end.



FEMA

Daily Operations Briefing

Wednesday, June 22, 2016

8:30 a.m. EDT

Significant Activity: June 21-22



Significant Events: None

Tropical Activity:

- Atlantic – No new tropical cyclones expected during the next five days
- Eastern Pacific – No new tropical cyclones expected during the next five days
- Central Pacific – No tropical cyclones expected through late Thursday night

Significant Weather:

- Moderate risk of severe thunderstorms – Upper/Middle Mississippi Valleys to the Ohio Valley
- Slight risk of severe thunderstorms – Upper/Middle Mississippi Valleys to the Great Lakes, Ohio Valley, Central Appalachians, and portions of the Mid-Atlantic
- Excessive Heat – CA, NV, AZ, KS, and MO
- Red Flag Warnings – NV
- Space Weather – No space weather storms observed the past 24 hours; No storms predicted the next 24 hours

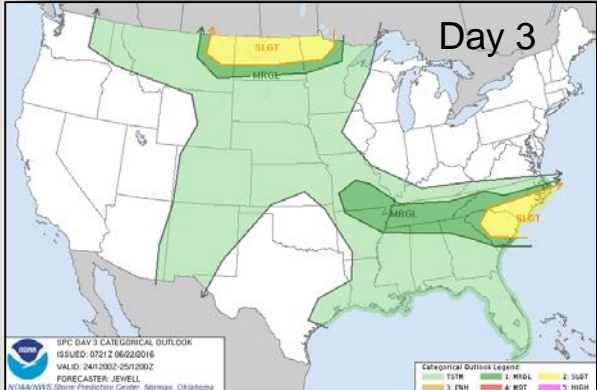
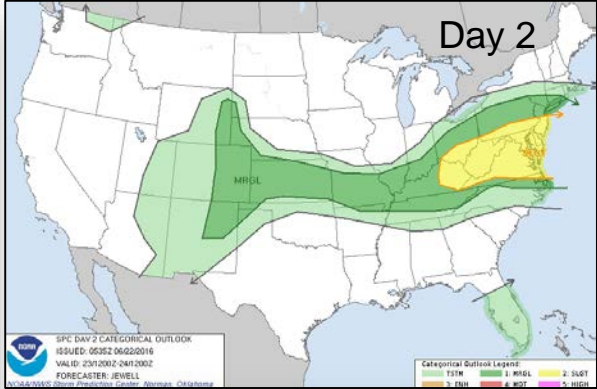
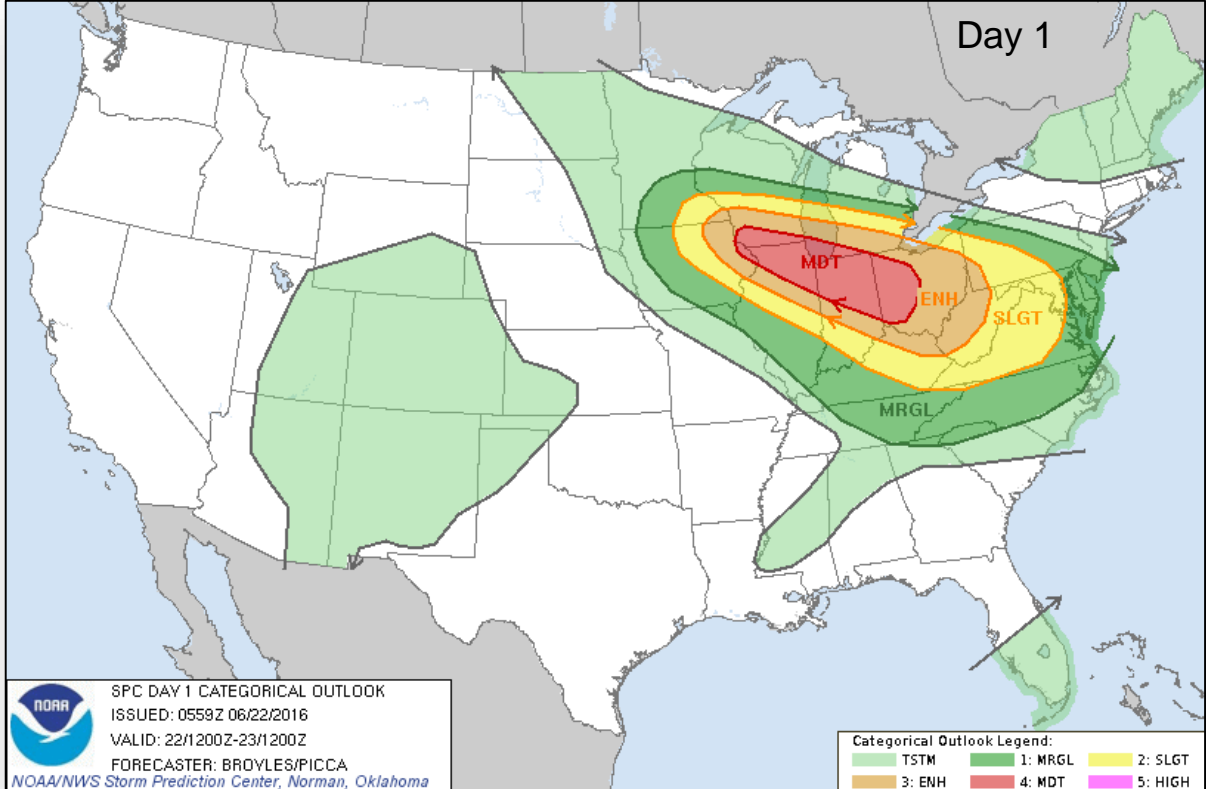
Earthquake Activity: No significant activity

Declaration Activity:

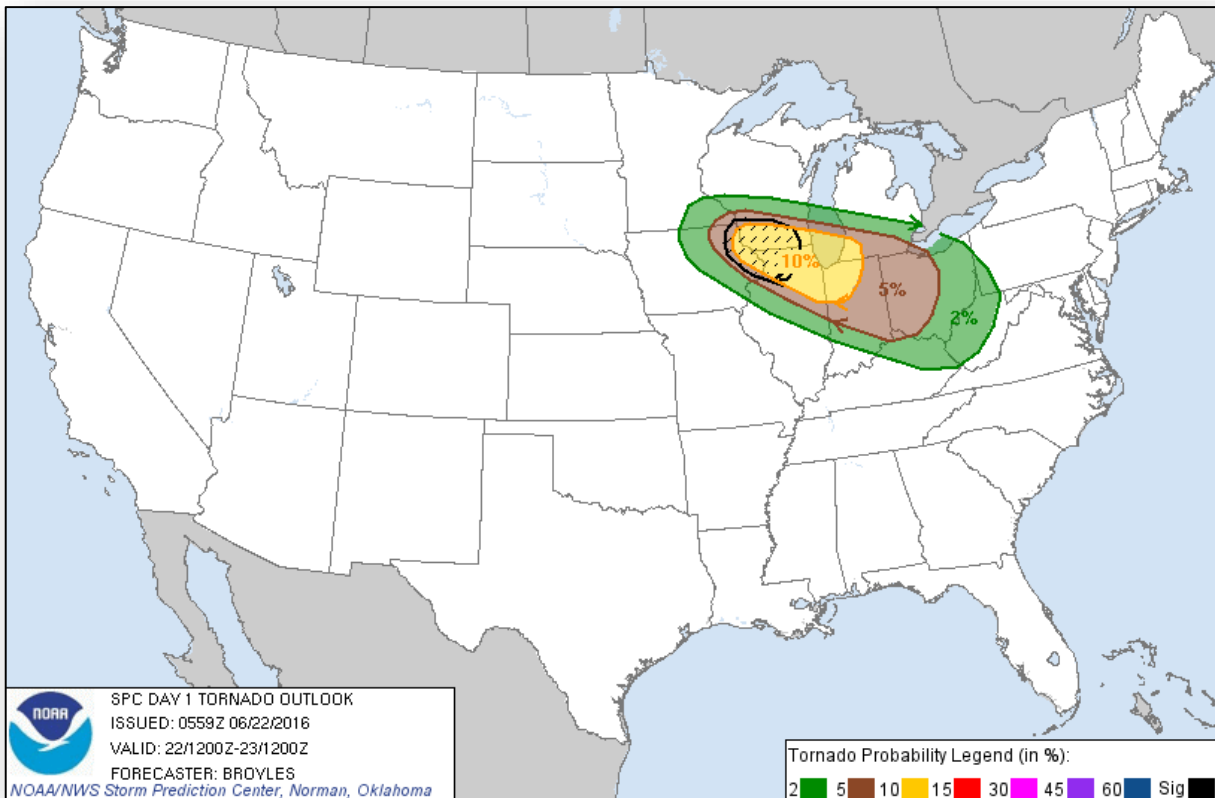
Saddle Fire – Washington County, Utah

- FMAG approved on June 21, 2016 (FEMA-5130-FM-UT)

Severe Weather Outlook: Day 1 - 3



Tornado Outlook: Day 1



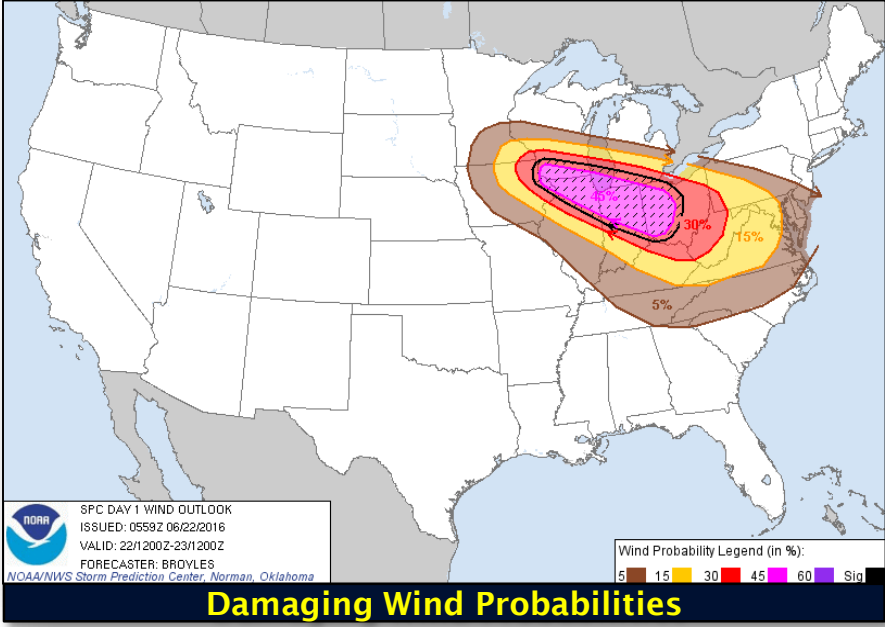
Tornado Probabilities

Probability for EF2+ tornado within 25 miles of a point

- 2%
- 5%
- 10%
- 15%
- 30%
- 45%
- 60%+

10%+ Probability for Significant Tornadoes (EF2+)

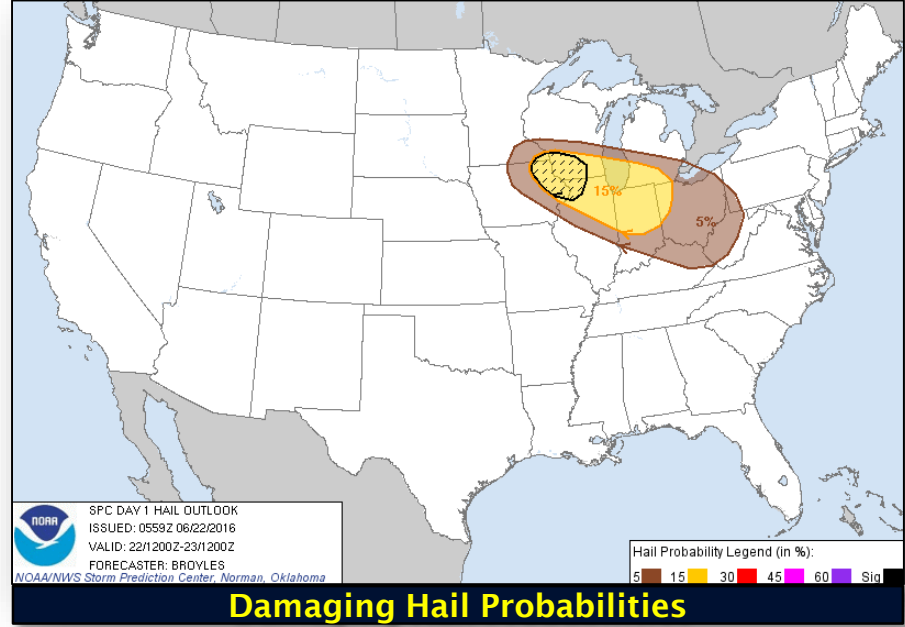
Severe Wind & Hail Outlook: Day 1



Probability for 58+ mph winds within 25 miles of a point

5% 15% 30% 45% 60%

10%+ Probability for Significant Damaging Winds (75+ mph gusts)

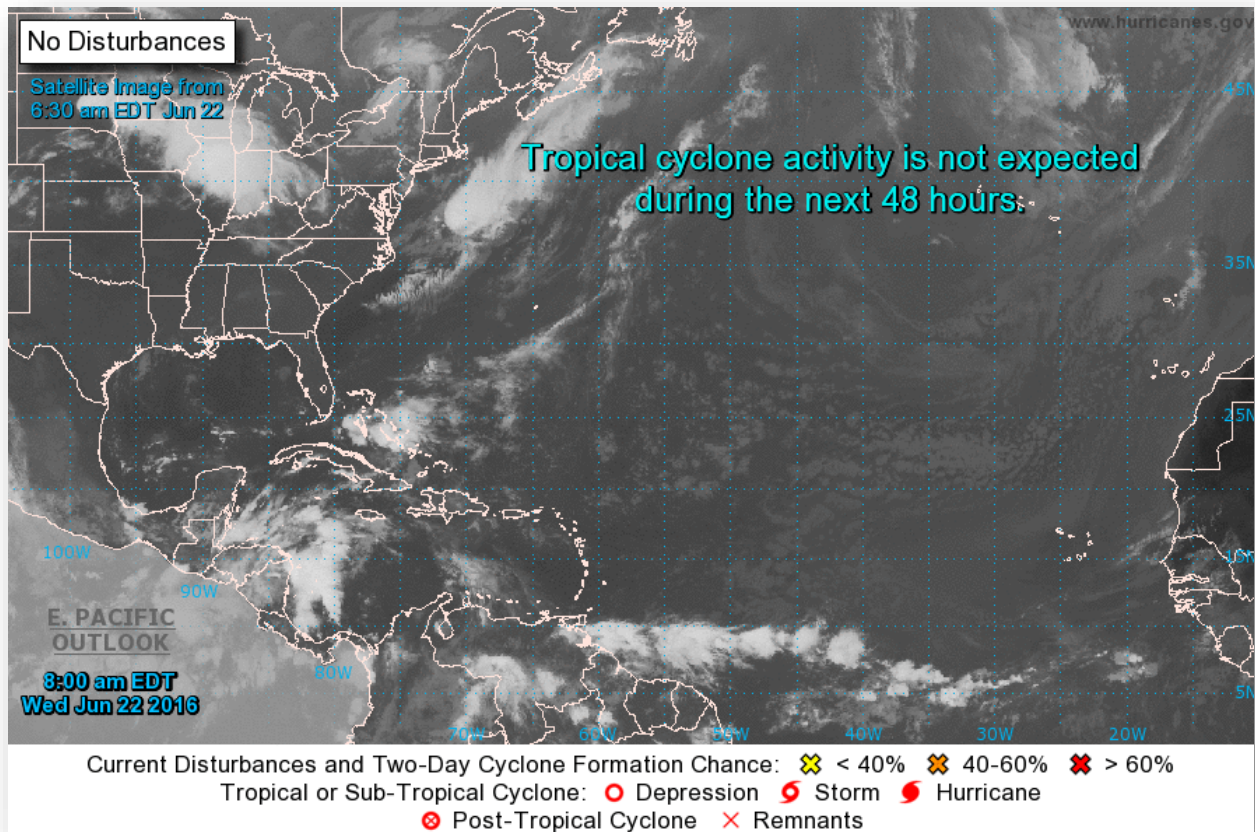


Probability of one inch diameter hail or larger within 25 miles of a point

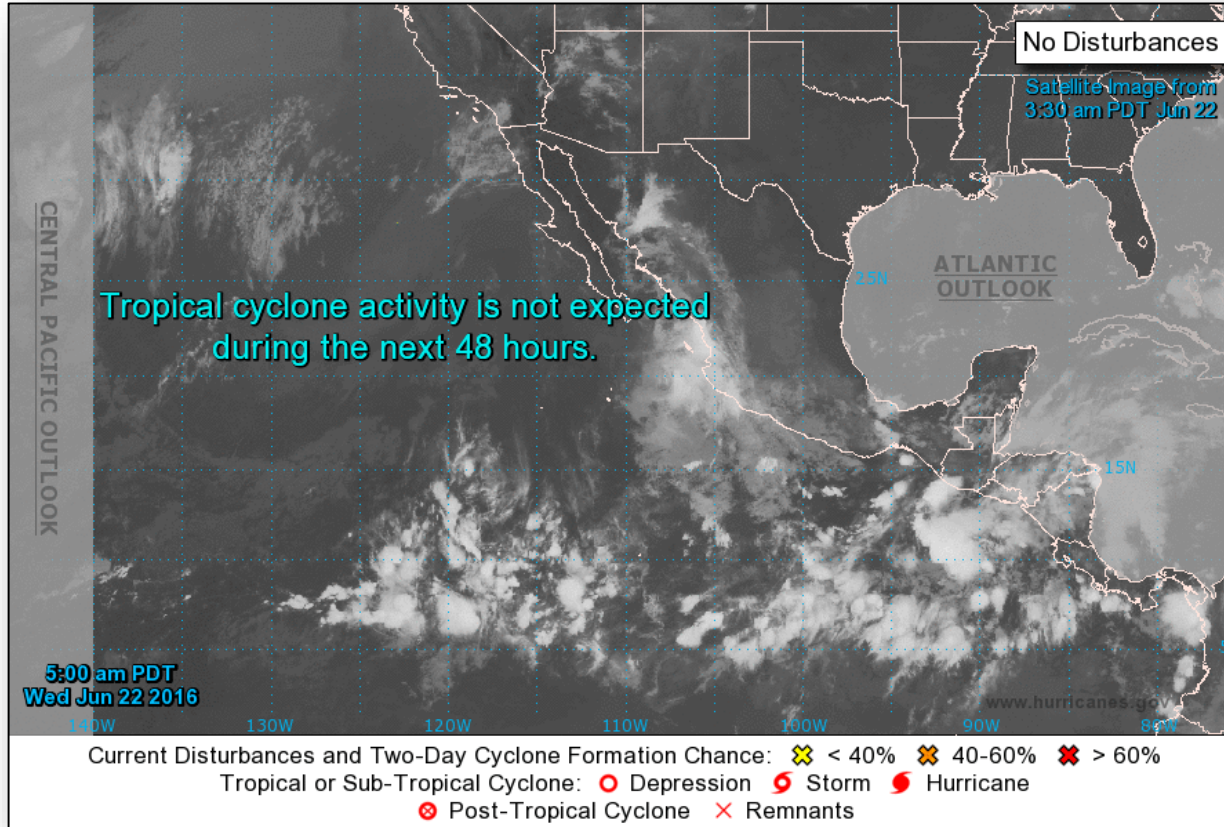
5% 15% 30% 45% 60%

10%+ Probability of 2 in diameter hail or larger

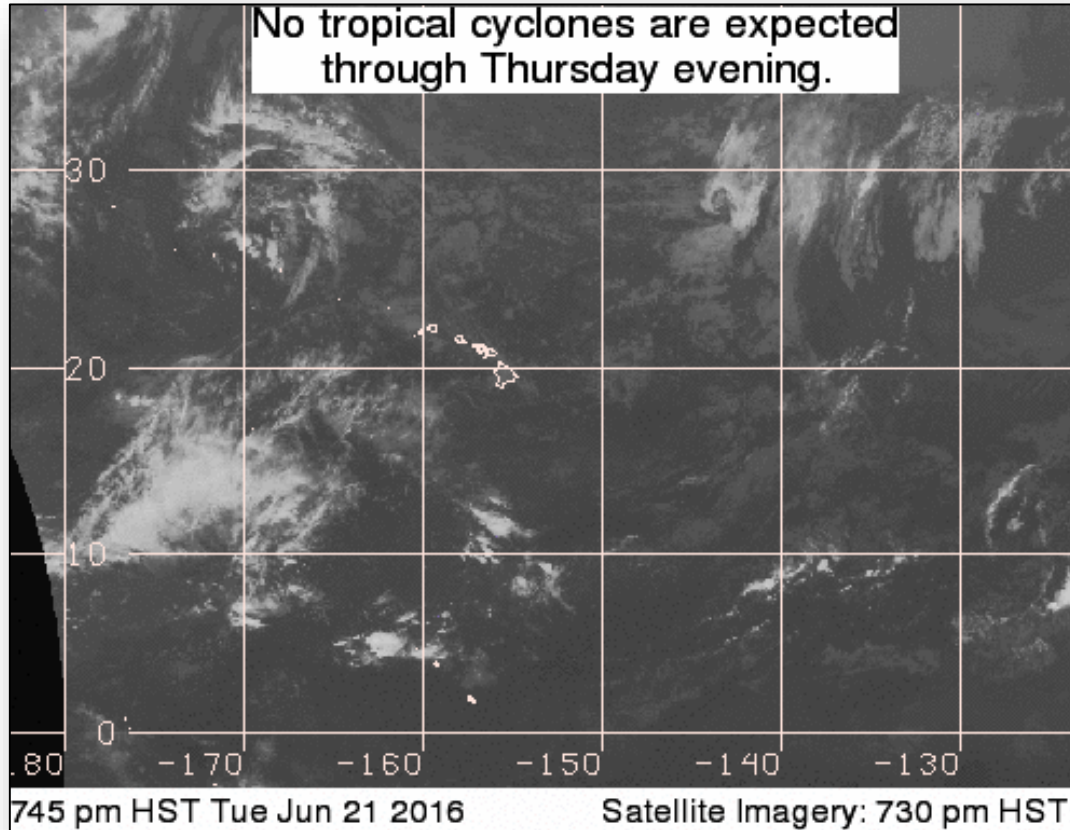
Tropical Outlook – Atlantic



Tropical Outlook – Eastern Pacific



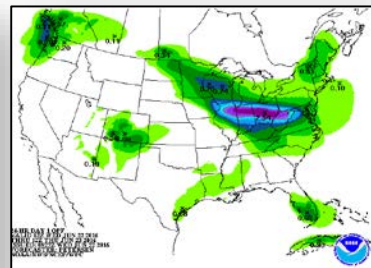
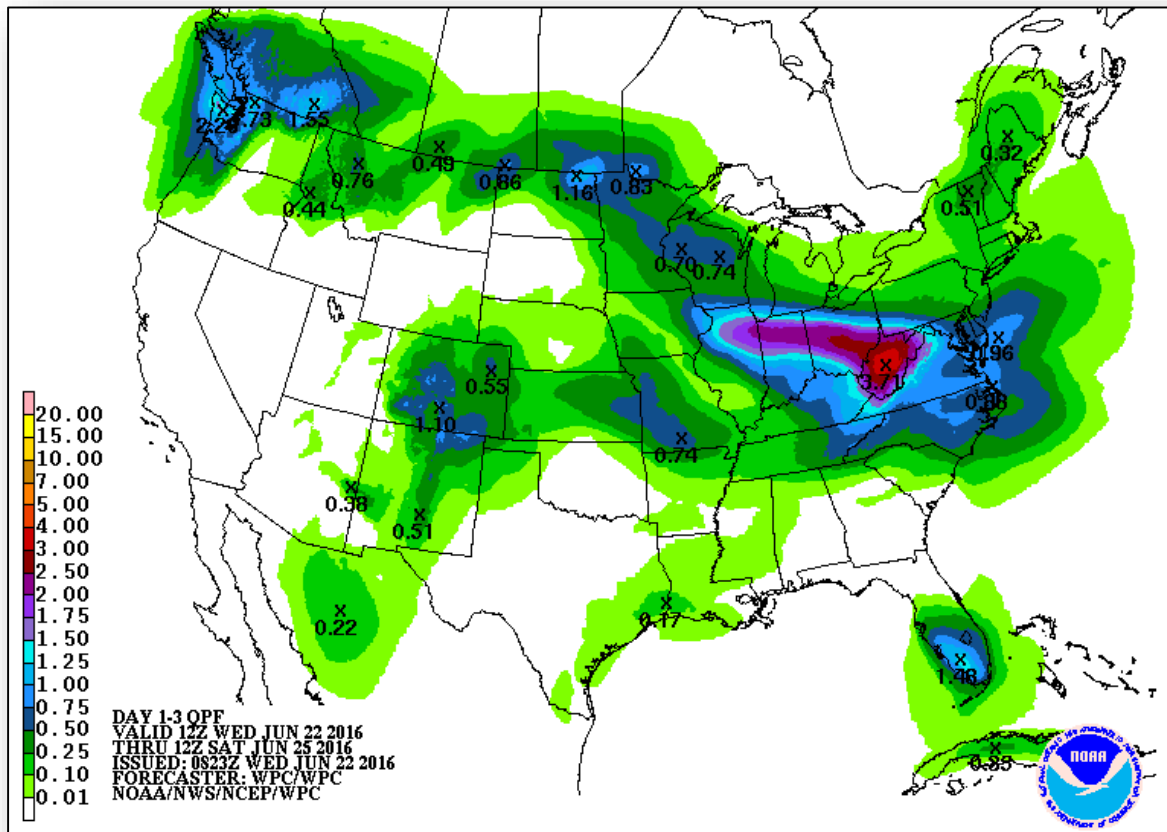
Tropical Outlook – Central Pacific



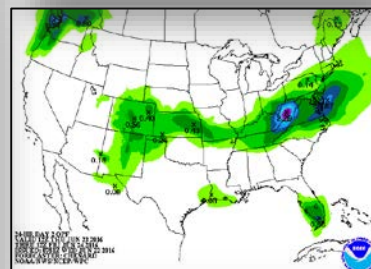
Precipitation Forecast, 1-3 Day



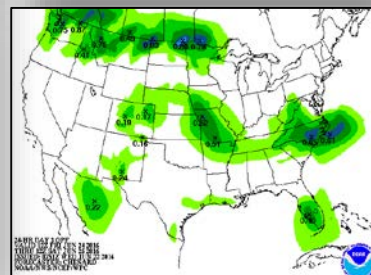
FEMA



Day 1

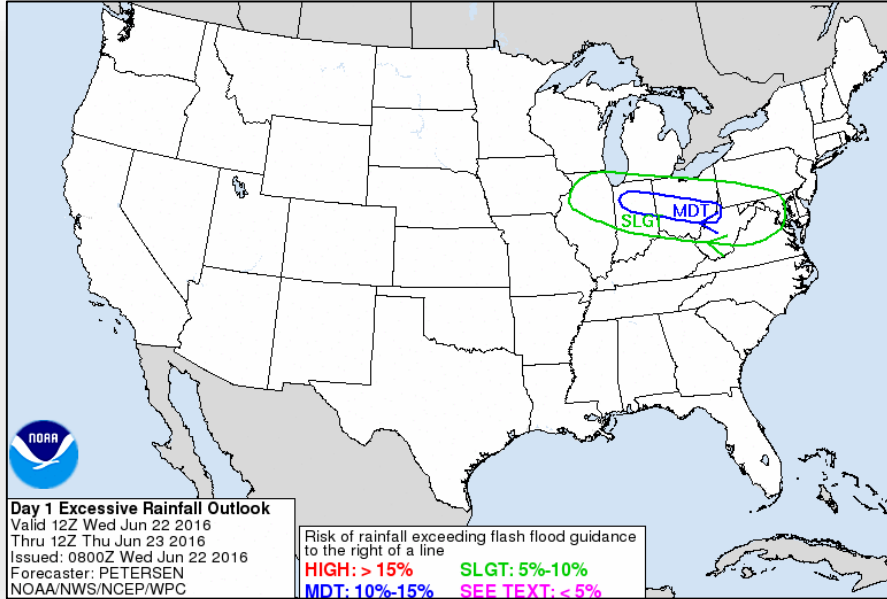


Day 2

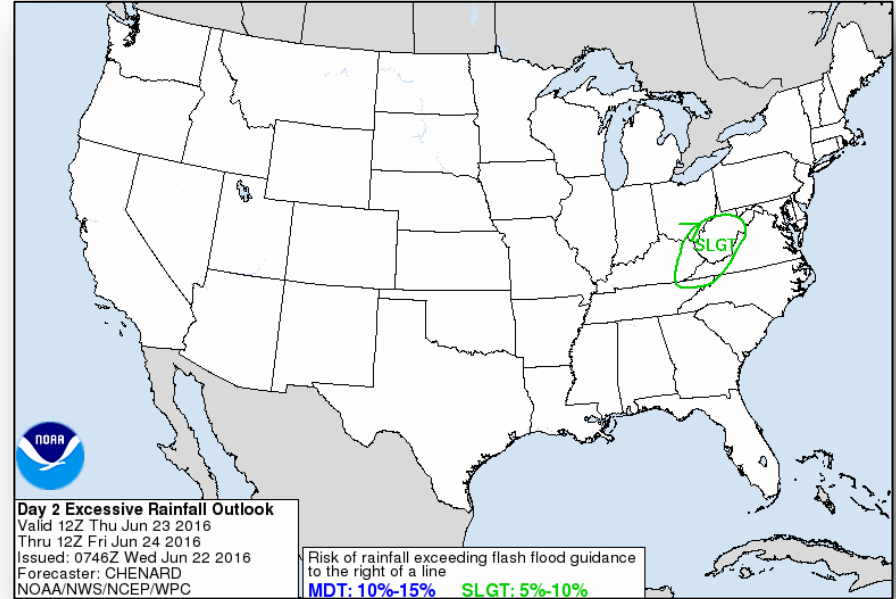


Day 3

Flash Flood Potential

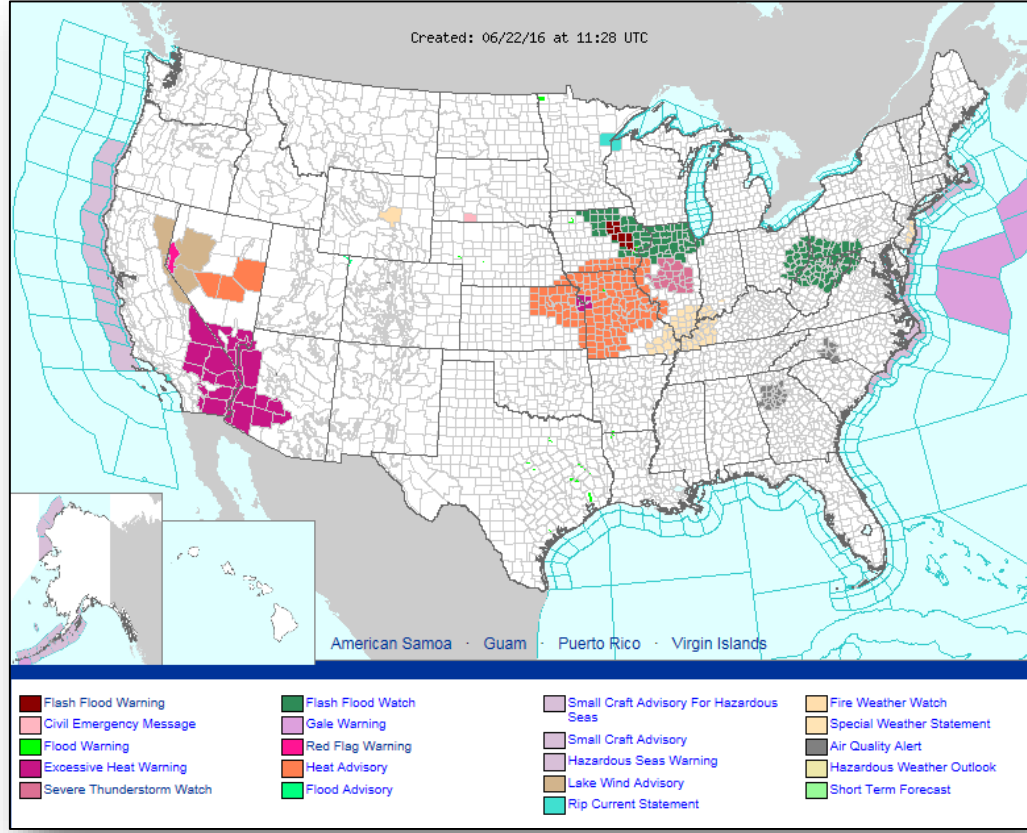


Day 1

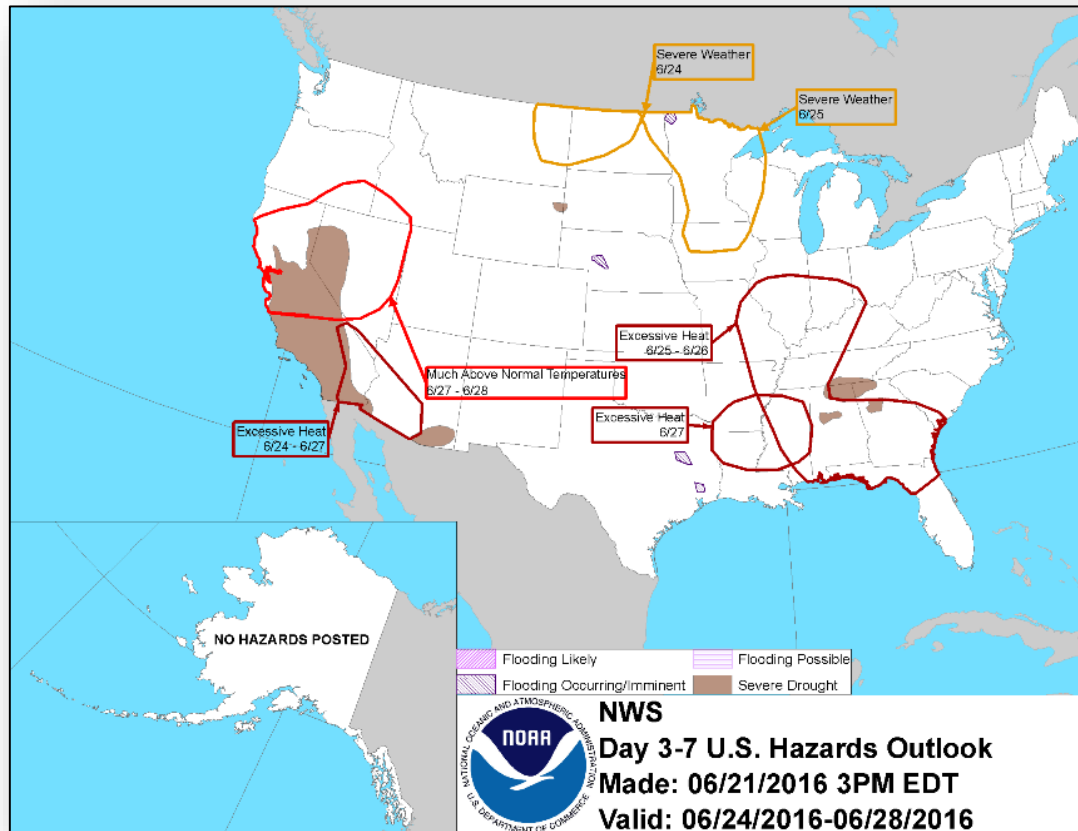


Day 2

Active Watches/Warnings

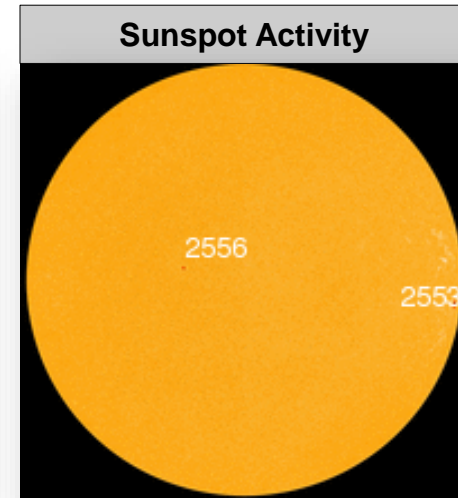
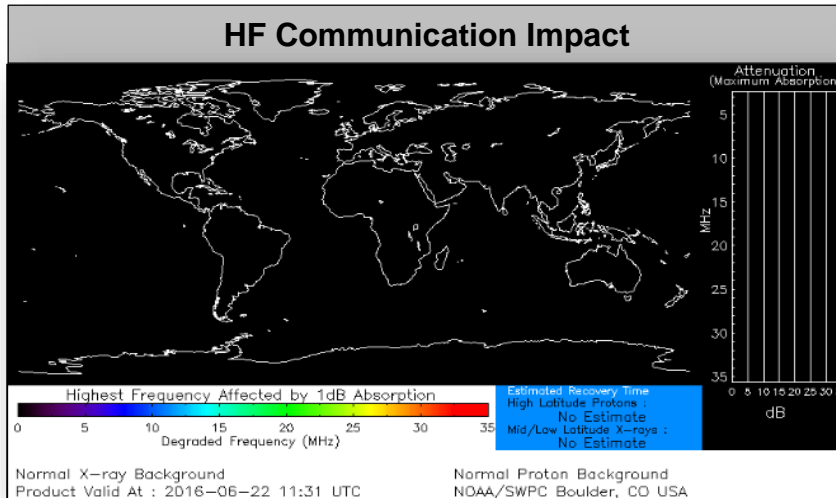


Hazard Outlook, June 24-28



Space Weather

	Past 24 Hours	Current	Next 24 Hours
Space Weather Activity	None	None	None
Geomagnetic Storms	None	None	None
Solar Radiation Storms	None	None	None
Radio Blackouts	None	None	None



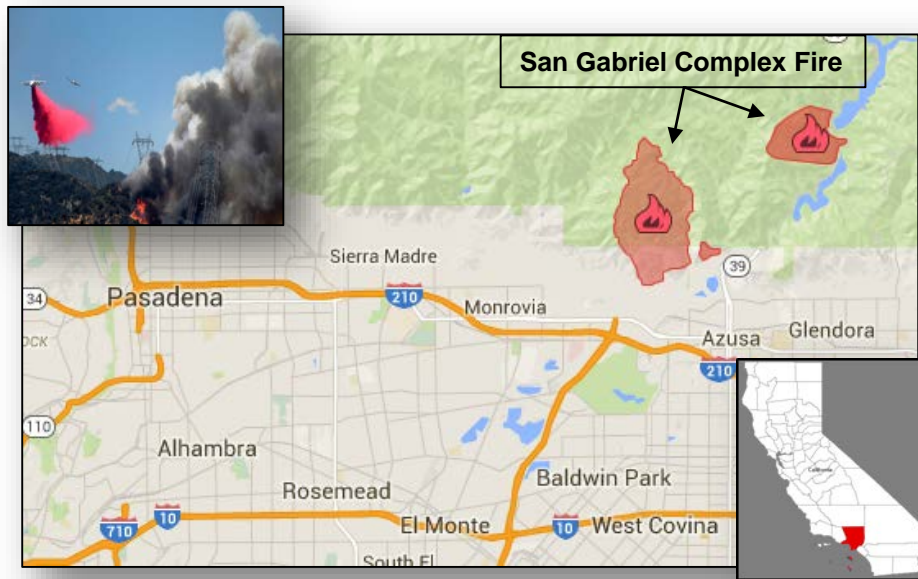
Wildfire – California



Fire Name	Location	Acres burned	% Contained	Est. Full Containment	FMAG	Structures Lost / Threatened	Fatalities / Injuries
San Gabriel Complex	Los Angeles County	5,400	0	Unknown	FEMA-5129-FM-CA Approved June 21	0 / 602 (homes)	0 / 1

Current Situation

- The Fish and Reservoir Fire responses have merged resources due to their proximity
- Now renamed the San Gabriel Complex Fire
- Fire threatens:
 - 602 homes (all primary residences)
 - 3 sets of 220 kV lines & 2.5 million gallon water storage/distribution tank
- A late afternoon wind shift is predicted, which would threaten four nearby communities
- Mandatory evacuation for 1,200 people; voluntary evacuations for 600 people
- 5 large fires burning in the state
- CA EOC remains at Partial Activation (drought)



Wildfire – Utah



Fire Name	Location	Acres burned	% Contained	Est. Full Containment	FMAG	Structures Lost / Threatened	Fatalities / Injuries
Saddle	Washington County	518	0	Unknown	FEMA-5130-FM-UT Approved June 21	0 / 150 (homes)	0 / 0

Current Situation

- Fire began on June 13 in Washington County, UT
- Fire threatens:
 - 150 homes (all primary residences)
 - 12 other structures
 - Power lines and a watershed
- Mandatory evacuation for 100 people near Pine Valley, UT (Pop. 200)
- 2 additional large fires burning in the state
- Drones being flown near the fire are hampering fire fighting efforts – Fire fighting aircraft grounded 3 times this week
- UT EOC at Monitoring through Wildfire Season



Wildfire Summary



Fire Name (County)	FMAG #	Acres burned	% Contained	Evacuations (Residents)	Structures Threatened	Structures Damaged / Destroyed	Fatalities / Injuries
California (2)							
Border 3 (San Diego County)	FEMA-5128-FM-CA (Approved June 19)	6,020	10% (+5)	Mandatory (200)	750 homes / 250 structures	0 / 4 minor structures	0 / 0
San Gabriel Complex (Fish & Reservoir) (Los Angeles County)	FEMA-5129-FM-CA (Approved June 21)	5,400	10% (+10)	Mandatory (1,200) Voluntary (600)	Power lines Water storage Homes / 602	0 / 0	0 / 1
New Mexico (1)							
Dog Head (FINAL) (Torrance County)	FEMA-5127-FM-NM (Approved June 16)	17,912 (+11)	61% (+15)	Lifted	1,500 homes / 350 mixed commercial	0 / 53 26 homes, 27 other	0 / 1
Utah (1)							
Saddle (Saddle County)	FEMA-5130-FM-UT (Approved June 21)	518	0%	Mandatory (200)	150 homes / 12 buildings & utility lines / watershed	0 / 0	0 / 0

FMAG Requests and Declarations



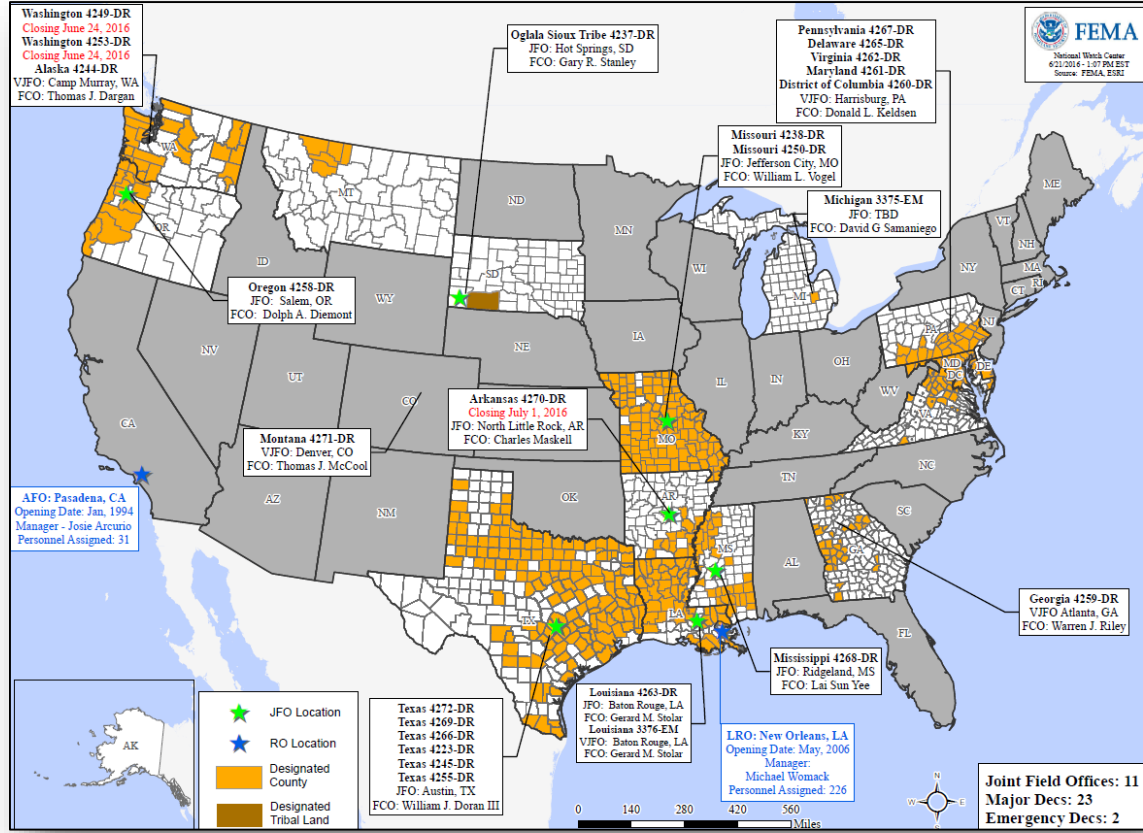
Action (since last report)		Total	FMAG No. and State		
Requests DENIED		0			
Requests APPROVED		1	FEMA-5130-FM-UT		
Approved FMAG Data					
Year	Current YTD	MTD	Monthly Average	Cumulative Acres Burned YTD	Cumulative Denied FMAGs YTD
2016	16	6	2	166,612	2
Year	Total Previous FY	++ Yearly Average		Total Acres Burned Previous Year	Total Denied FMAGs Previous Year
2015	33	36		250,658	2
* Reflects the 3-year average for current month/ ** Reflects 3-year total average					

Joint Preliminary Damage Assessments



Region	State / Location	Event	IA/PA	Number of Counties		Start – End
				Requested	Complete	
VI	OK	Flooding June 1-12, 2016	IA	4	0	6/20 – TBD
VII	KS	Severe Storms and Flooding May 22-31, 2016	PA	15	0	6/20 – TBD

Open Field Offices as of June 22, 2016



FEMA Readiness – Deployable Teams/Assets



Deployable Teams/Assets									
Resource	Status	Total	FMC Available		Partially Available	Not Available	Detailed, Deployed, Activated	Comments	Rating Criterion
FCO	Yellow	33	15	45%	0	1	17		OFDC Readiness: FCO Green Yellow Red Type 1 3+ 2 1 Type 2 4+ 3 2 Type 3 4 3 2 FDRC 3 2 1
FDRC	Green	9	5	56%	0	0	4		
US&R	Green	28	27	96%	1	0	0	NJ TF-1 Partially Mission Capable	<ul style="list-style-type: none"> Green = Available/FMC Yellow = Available/PMC Red = Out-of-Service Blue = Assigned/Deployed
National IMAT	Green	3	3	100%	0	0	0		<ul style="list-style-type: none"> Green: 3 available Yellow: 1-2 available Red: 0 avail (<i>Individual N-IMAT red if 50% of Section Chiefs and/or Team Leader is unavailable for deployment.</i>)
Regional IMAT	Green	13	10	77%	0	0	3	Deployed: RV: to MI (3375-MI) RVI: Team 1 to TX (4266-TX) RVII: to TX (4272-TX)	<ul style="list-style-type: none"> Green: >6 teams available Yellow: 4 - 6 teams available Red: < 4 teams available <i>R-IMAT also red if TL Ops/Log Chief is unavailable & has no qualified replacement</i>
MERS Teams	Green	18	13	75%	0	0	5	Deployed: Denton: 3 teams to TX (4272-TX) Bothell: 1 team to HI; 1 to CA (Cache Maintenance)	<ul style="list-style-type: none"> Green = >66% available Yellow = 33% to 66% available Red = <33% available

FEMA Readiness – National/Regional Teams



National/Regional Teams									
Resource	Status	Total	FMC Available		Partially Available	Not Available	Status	Comments	Rating Criterion
NWC		5	5	100%	0	0	Watch / Steady State		<ul style="list-style-type: none"> • Green = FMC • Yellow = PMC • Red = NMC
NRCC		2	2	100%	0	0	Not Activated		
HLT		1	N/A	N/A	0	0	Activated		
DEST							Not Activated		
RRCCs		10	10	100%	0	0	Not Activated		
RWCs/MOCs		10	10	100%	0	0	Activated	Region VI RWC Enhanced Watch (day shift only)	



FEMA

FEMA's mission is to support our citizens and first responders to ensure that as a nation we work together to build, sustain, and improve our capability to prepare for, protect against, respond to, recover from, and mitigate all hazards.