

The Disaster Center is dedicated to the idea that disaster mitigation is cost effective and individuals pursuing their own interest are the greatest potential force for disaster reduction.

Please consider making a small donation to the Disaster Center



When disaster mitigation is cost effective, we are on the road to bringing disasters to an end.



FEMA

Daily Operations Briefing

Tuesday, January 5, 2016

8:30 a.m. EST

Significant Activity: Jan 4-5



Significant Events:

- Flooding – Central U.S.

Significant Weather:

- Heavy rain/flash flooding – coastal CA
- Heavy Snow – northern CA & Sierras, Great Basin, and Southwest
- Snow – Upper Great Lakes and Upper Mississippi Valley
- Red Flag Warnings / Elevated Fire Weather conditions: None
- Space Weather Storms: No space weather storms were observed for the past 24 hours; no space weather storms are predicted for the next 24 hours

Declaration Activity:

- Major Disaster Declaration approved for Mississippi
- Amendment #1 to FEMA-3374-EM-MO

Flooding – Central U.S.



Situation:

- Major flooding continues across western Ohio and Illinois, Mid and Lower Mississippi, southern White and eastern Arkansas Rivers as floodwaters progress downstream into the Lower Mississippi Basin.
- Moderate to Major flooding is forecast the next couple of weeks from Arkansas City, AR to Donaldson, MS

Impacts:

FEMA Region IV:

- RRCC not activated; RWC at Watch/Steady State

Mississippi

- EOC Partially Activated; Governor declared a State of Emergency Dec 31
- [Major disaster declaration FEMA-4248-DR was approved on January 4, 2016](#)

Tennessee

- [EOC decreased activation to Monitoring](#)

FEMA Region V:

- RWC at Enhanced Watch (day shift); LNO deployed to IL EOC

Illinois

- EOC Partially Activated; Governor declared State of Emergency Dec 29 (12 counties)
- NG soldiers/air assets activated
- [3 \(-1\) shelters open with 24 \(-8\) occupants \(ARC midnight shelter report\)](#)
- Levee monitoring continues along the Mississippi and Illinois Rivers

Flooding – FEMA Response



FEMA Region VI

- RRCC Level III (Day Shift); RWC at Enhanced Watch (Night Shift)
- LNOs deployed to NM (1), TX (2), OK (1), and AR (1) State EOCs
- IMAT Team 1 - available
- IMAT Team 2 remains deployed to Austin, TX for previous declarations
- ESF 3 – Team Lead deployed to Regional Office

FEMA Region VII

- RRCC activated to Level III (Day Shift) with ESFs 3,5,& 10 - until ops transition to JFO
- RWC at Watch/Steady State
- IMAT is deployed to MO supporting FEMA-4238-DR-MO

Missouri

- Emergency Declaration FEMA-3374-EM was approved on Jan 2, 2016
- [Amendment #1 to FEMA-3374-EM was approved Jan 4, 2016](#)
- [EOC is monitoring](#)
- 535 NG personnel activated; Lead for organizing debris removal; assist w/water purification
- [Preliminary assessment – 1,070 structures affected by flooding – 758 homes \(NGA\)](#)
- Boil water advisory remains in effect for Jefferson Co (20k residents)
- [3 shelters open with 17 \(-19\) occupants \(ARC Midnight shelter report\)](#)
- [67 roads remain closed due to Flooding](#)

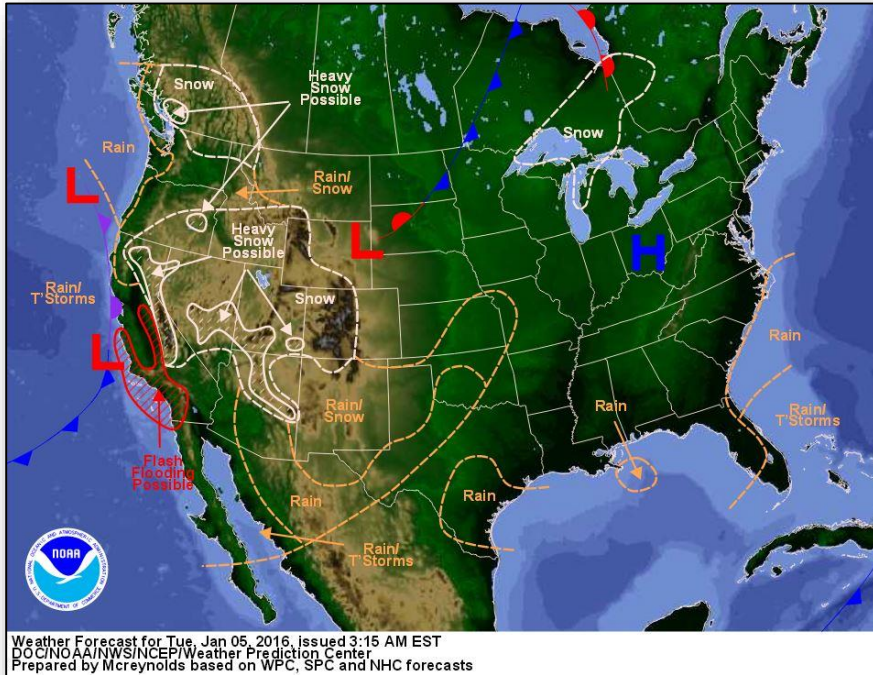
Federal Response

- NRCC is not activated; NWC at Watch/Steady State (24/7)
- [USACE: 6 divisions engaged in flood fight response; upper districts transitioning to recovery; focus shifting from north to South Louisiana Ops](#)
- FEMA Logistics: an ISB Team (6 personnel) are deployed to Norman, OK; [10 of 30 generators staged in Norman, OK were installed](#)

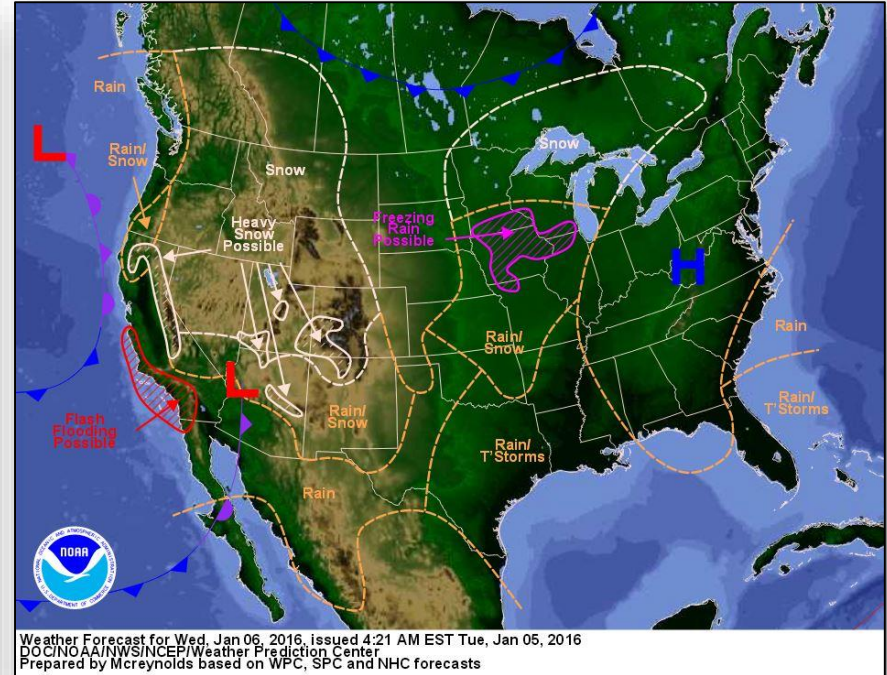


Meremac River southwest of St. Louis
Photo Credit: FEMA

National Weather Forecast

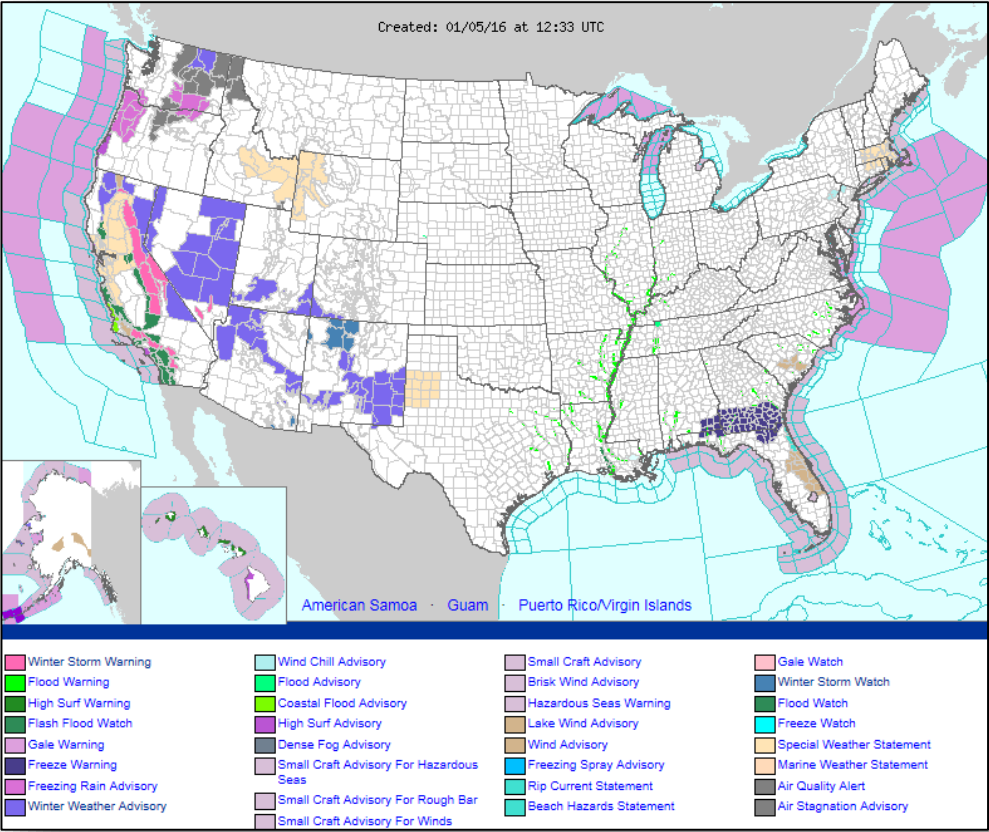


Today

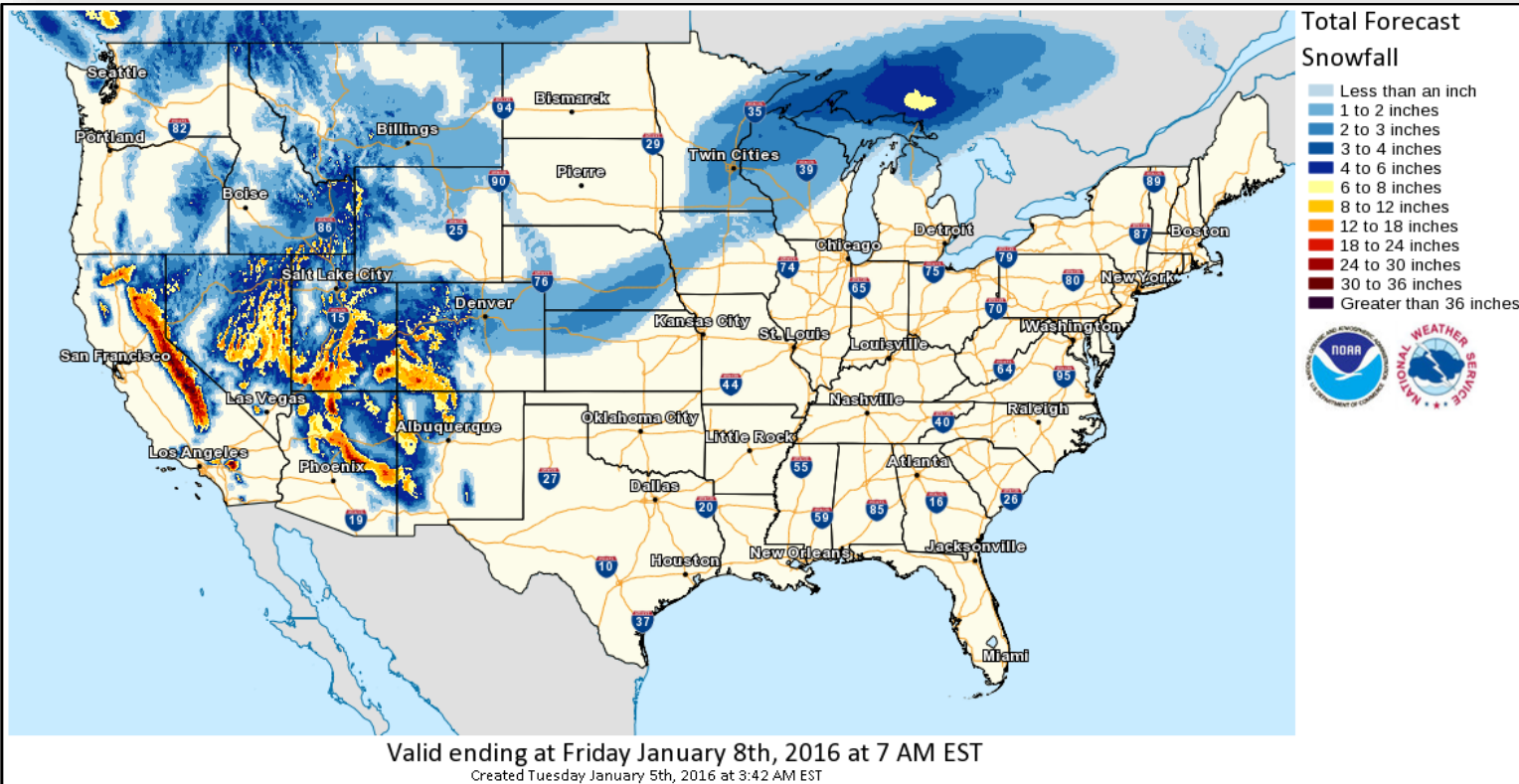


Tomorrow

Active Watches/Warnings



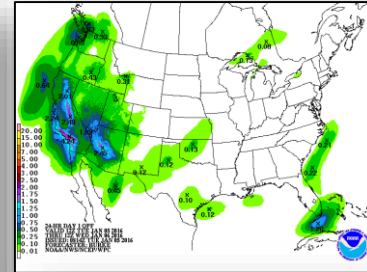
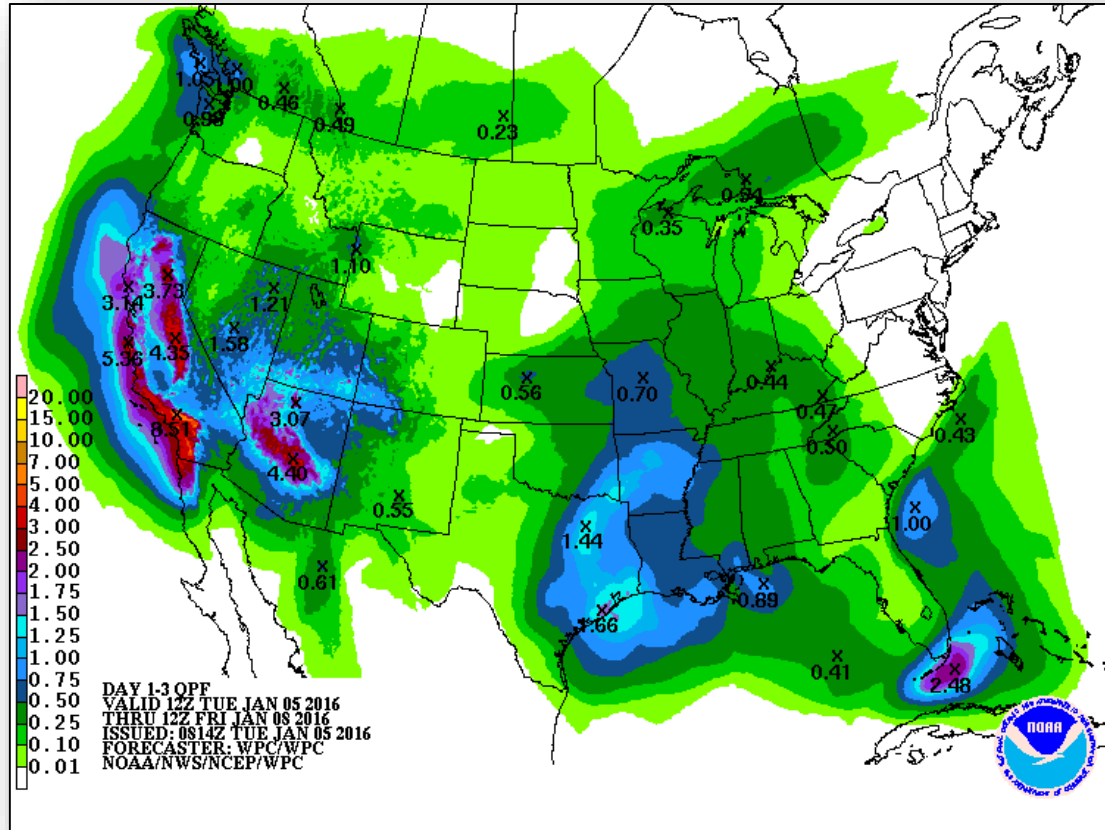
Snowfall Forecast



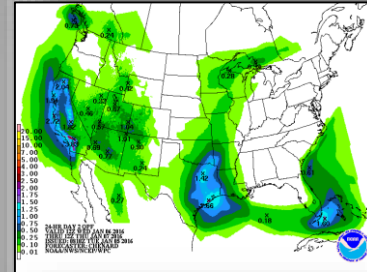
Precipitation Forecast, 1-3 Day



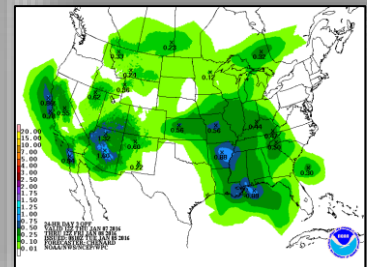
FEMA



Day 1



Day 2



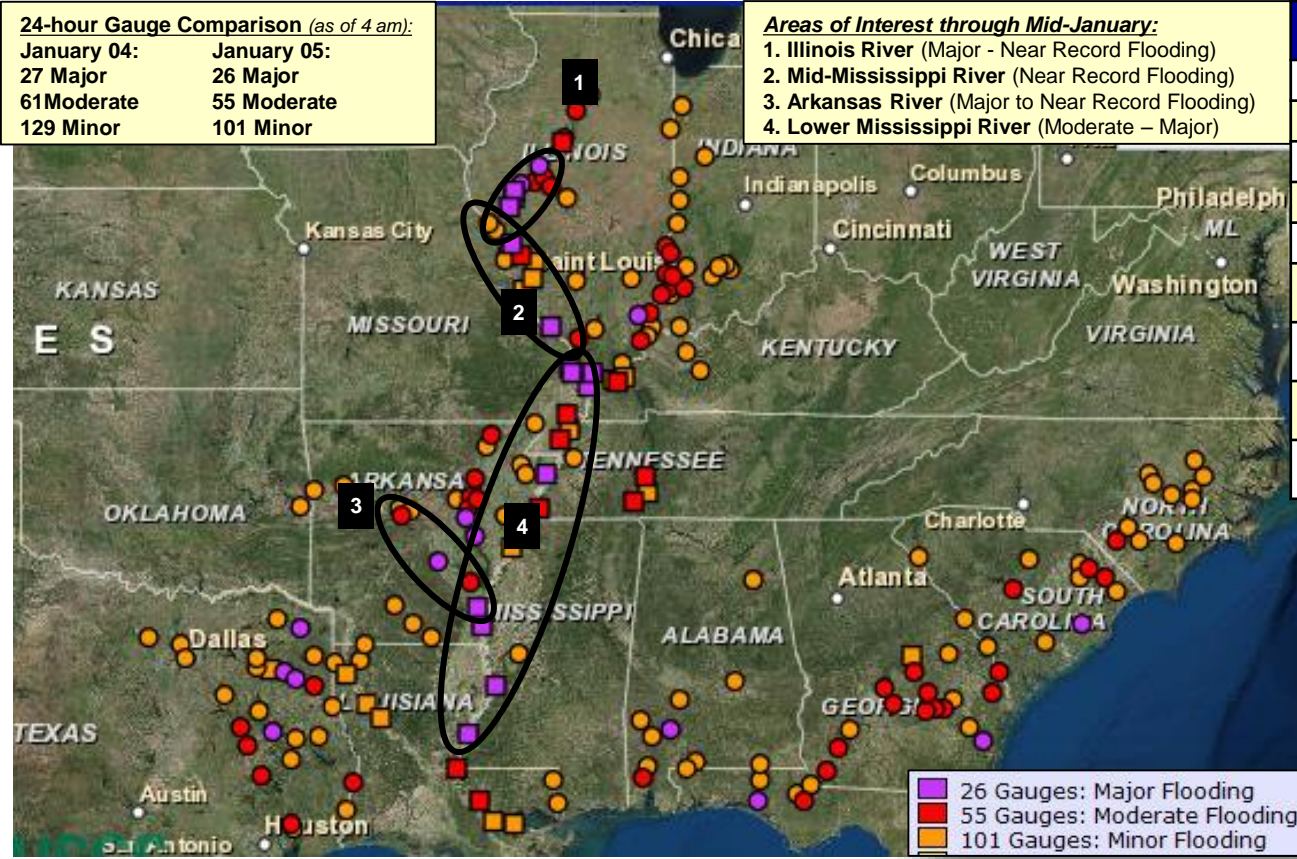
Day 3

River Flood Forecast – National

24-hour Gauge Comparison (as of 4 am):

January 04:	January 05:
27 Major	26 Major
61 Moderate	55 Moderate
129 Minor	101 Minor

- Areas of Interest through Mid-January:**
1. Illinois River (Major - Near Record Flooding)
 2. Mid-Mississippi River (Near Record Flooding)
 3. Arkansas River (Major to Near Record Flooding)
 4. Lower Mississippi River (Moderate – Major)



Mississippi River Forecast Gauge	Estimated Peak Crest	Estimated Peak Flood Stage
Memphis, TN	Friday	Moderate
Tunica Park, MS	Saturday	Near Major
Arkansas City, AR	Next Week	Major
Greenville, MS	Next Week	Major
Vicksburg, MS	Next Week	Major
Natchez, MS	Week of Jan 17	Major
Red River Landing, LA	Week of Jan 17	Moderate
Baton Rouge, LA	Week of Jan 17	Major
Donaldsonville, LA	Week of Jan 17	Moderate

■ 26 Gauges: Major Flooding
■ 55 Gauges: Moderate Flooding
■ 101 Gauges: Minor Flooding

Illinois River

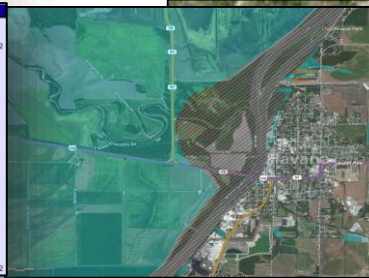
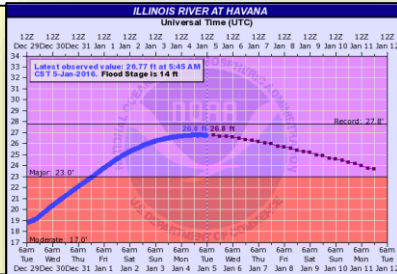
Illinois River:

Havana (Record 27.8)

Current Level: 26.77

Forecast Peak 26.8 (Jan 5)

- Big Lake Levee is overtopped
- Globe (Crabtree) Lake is overtopped



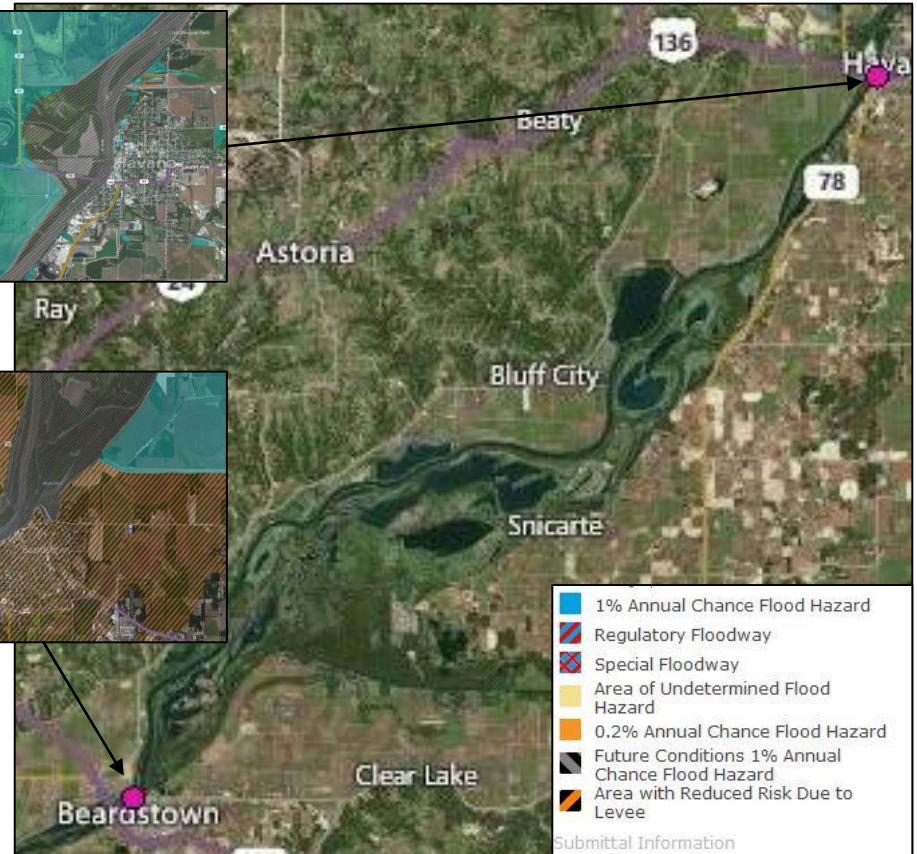
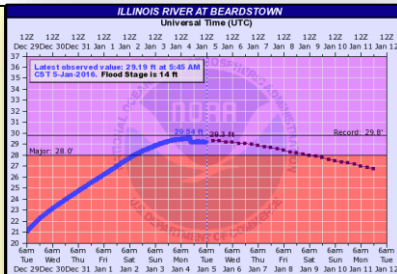
Illinois River:

Beardstown (Record 29.8)

Current Level: 29.19

Forecast Peak 29.6 (Jan 5)
At 30"

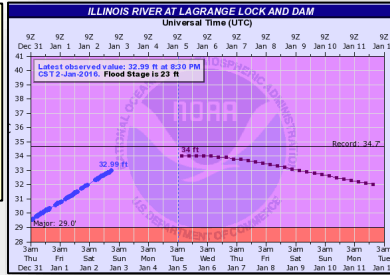
- Hager Slough is overtopped
- Portions of Route 100 closed
- Big Lake levee overtopped



Illinois River

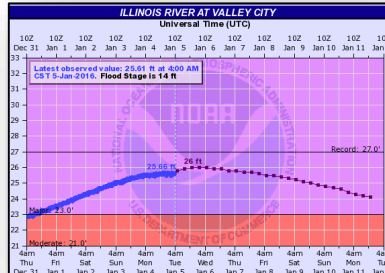
Illinois River:
LaGrange Lock (Record 34.7)
Current Level: 32.9
Forecast Peak 34.1 (Jan 5)

- At 35" County Highway flooded North of Lock and Dam
- Extensive wetlands flood
- Lock wall completely overtopped



Illinois River:
Valley City (Record 27)
Current Level: 25.7
Forecast Peak 26 (Jan 5)

- Buildings in Montezuma flooded
- County Hwy 21 flooded N of city



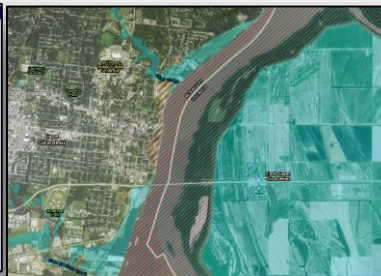
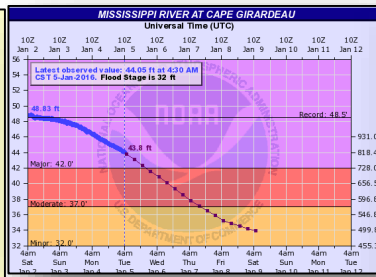
Mississippi River

Mississippi River:

Cape Girardeau (Record 48.5)

Current level: **44.3**

- 124 homes East of River Flood
- Several homes/structures in southern portions of County cut off by backwater flooding
- Numerous roads closed



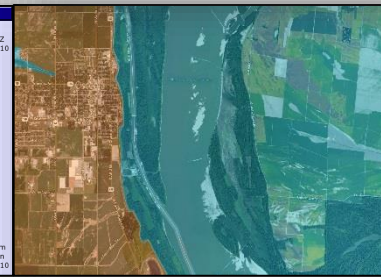
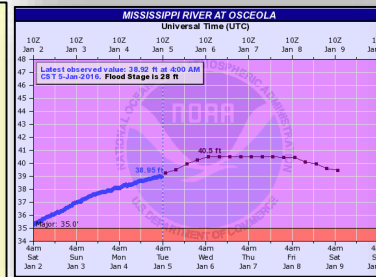
Mississippi River:

Osceola (Record 50.9)

Current Level: **38.9**

Forecast Peak **40.5 (Jan 6)**

- At 40' (TN) Centennial Island completely floods. In AR, elevator at Osceola is flooding
- All fields between Barfield Point and the Arkansas Levee are inundated.

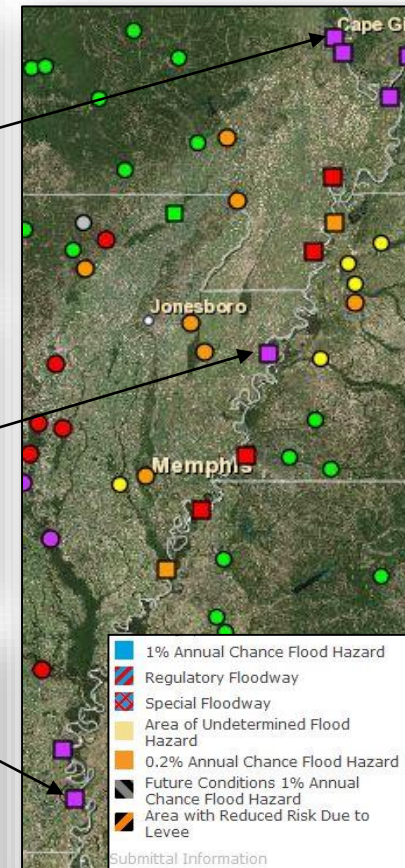
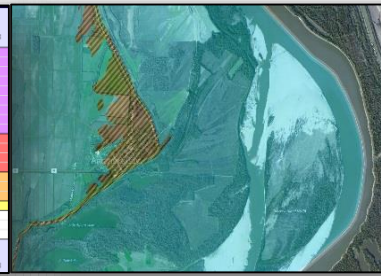
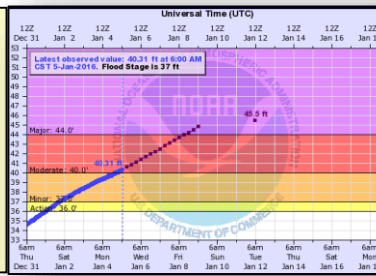


Mississippi River:

Arkansas City (Record 45.5)

Current level: **40**

- River accesses roads impassable
- Water reaches top of levees
- Trailers evacuated

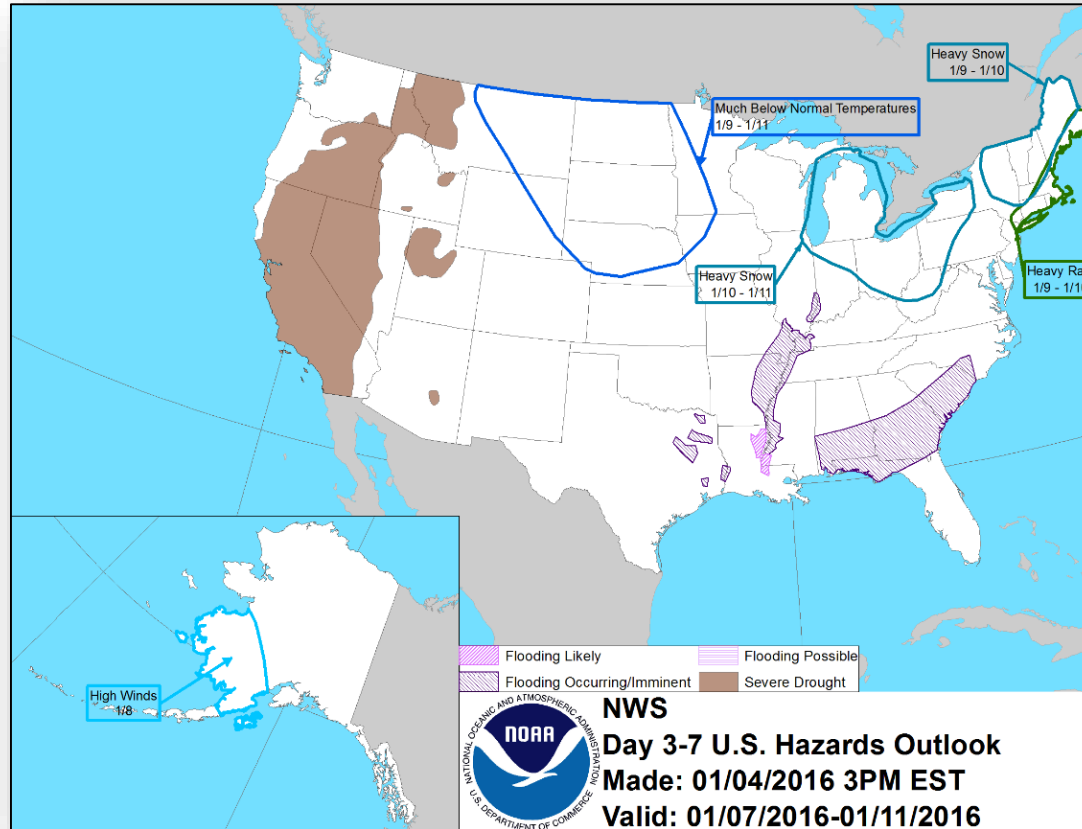


Submission Information

Hazard Outlook, Jan 7-11



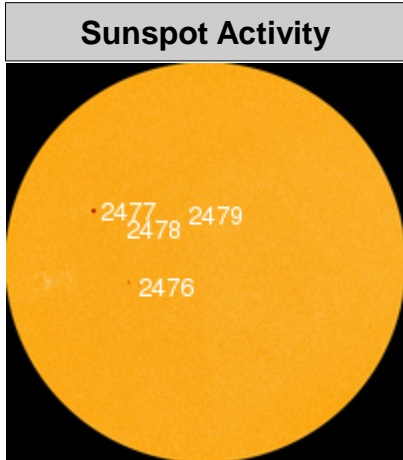
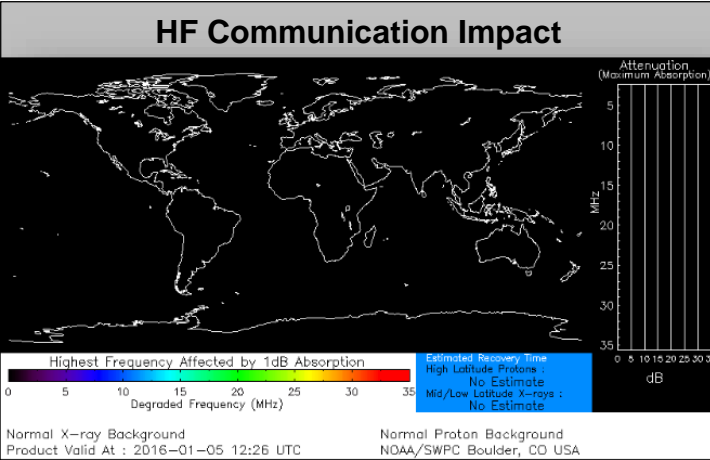
FEMA



Space Weather



	Past 24 Hours	Current	Next 24 Hours
Space Weather Activity	None	None	None
Geomagnetic Storms	None	None	None
Solar Radiation Storms	None	None	None
Radio Blackouts	None	None	None



NOAA/NWS Storm Prediction Center

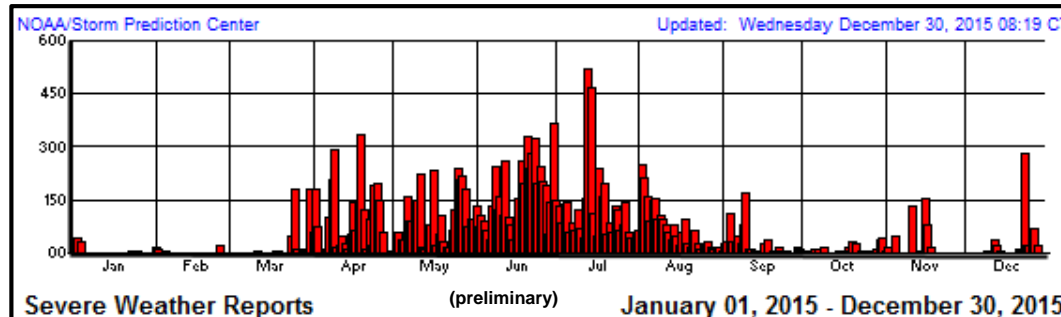


- **2015 was the first year since 2000 without an SPC High Risk being issued**
 - 3.5 High Risks issued each year on average
 - Active years have about 5 or 6 (i.e. – 2010 and 2011)
- **576 Watches were issued in 2015**
 - 363 Severe Thunderstorm Watches and 213 Tornado Watches
 - Active years may have over 900 Watches (976 in 2008 and 901 in 2011)
- **Only 2 Particularly Dangerous Situation (PDS) Watches were issued in 2015**
 - PDS Severe Thunderstorm Watch June 19 and a PDS Tornado Watch on December 23
 - Active years could see more than 20 (25 in 2008 and 20 in 2011)

Top Ten Active Days of 2015

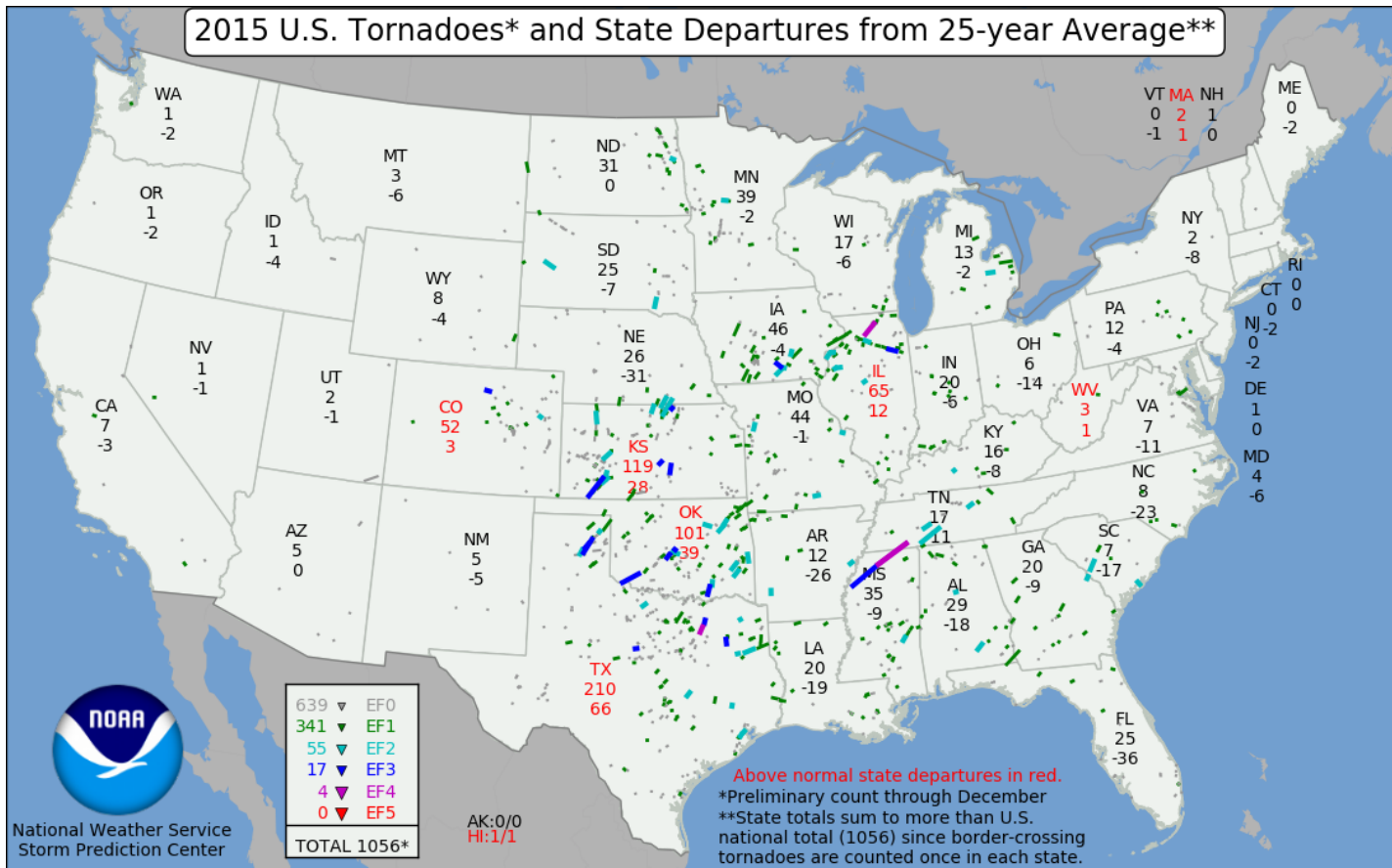
Rank	Date	Total Reports
1	07/13/15	523
2	07/14/15	467
3	06/30/15	368
4	04/19/15	335
5	06/20/15	328
6	06/23/15	323
7	04/09/15	291
8	06/22/15	283
9	12/23/15	281
10	06/12/15	260

(preliminary reports)





2015 U.S. Tornadoes* and State Departures from 25-year Average**



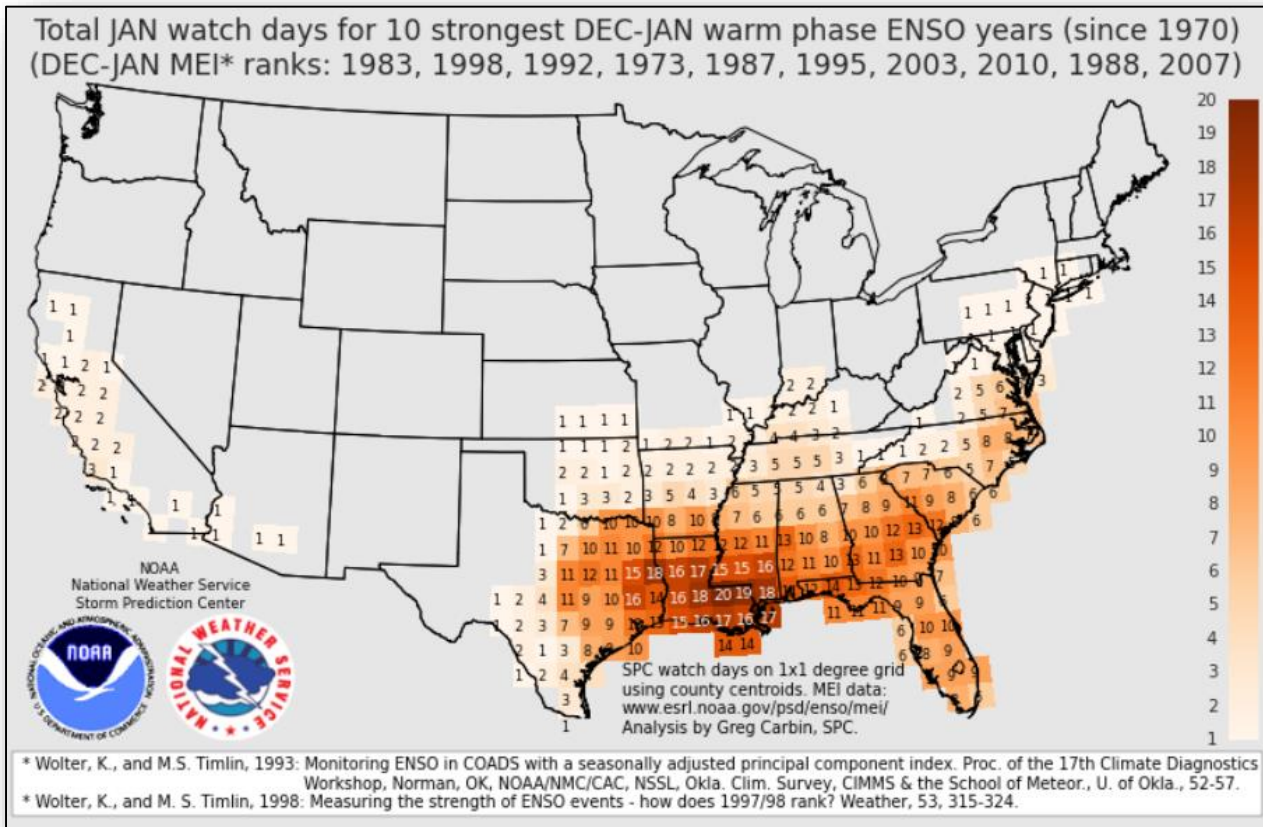
National Weather Service
Storm Prediction Center

Above normal state departures in red.
*Preliminary count through December
**State totals sum to more than U.S. national total (1056) since border-crossing tornadoes are counted once in each state.

El Niño/Severe Weather – January



FEMA

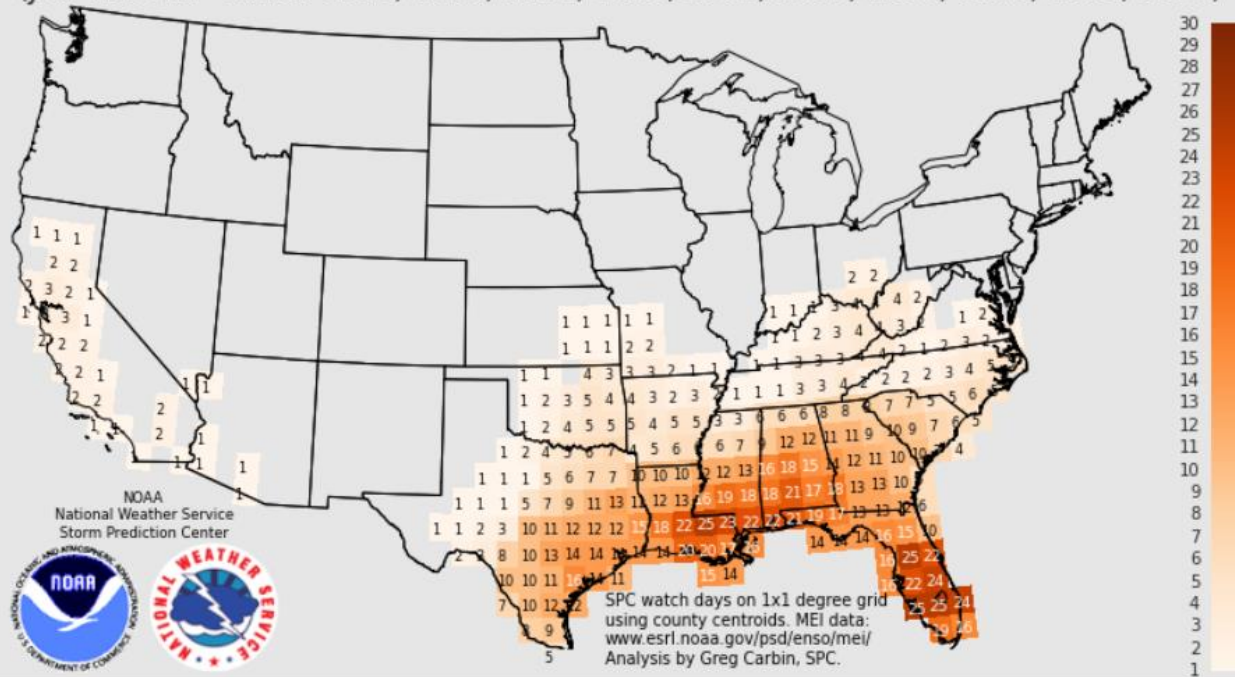


El Niño/Severe Weather – February



FEMA

Total FEB watch days for 10 strongest JAN-FEB warm phase ENSO years (since 1970)
 (JAN-FEB MEI* ranks: 1983, 1998, 1992, 2010, 1973, 1987, 1993, 1995, 2003, 1978)



* Wolter, K., and M.S. Timlin, 1993: Monitoring ENSO in COADS with a seasonally adjusted principal component index. Proc. of the 17th Climate Diagnostics Workshop, Norman, OK, NOAA/NMC/CAC, NSSL, Okla. Clim. Survey, CIMMS & the School of Meteor., U. of Okla., 52-57.

* Wolter, K., and M. S. Timlin, 1998: Measuring the strength of ENSO events - how does 1997/98 rank? Weather, 53, 315-324.

Disaster Requests & Declarations



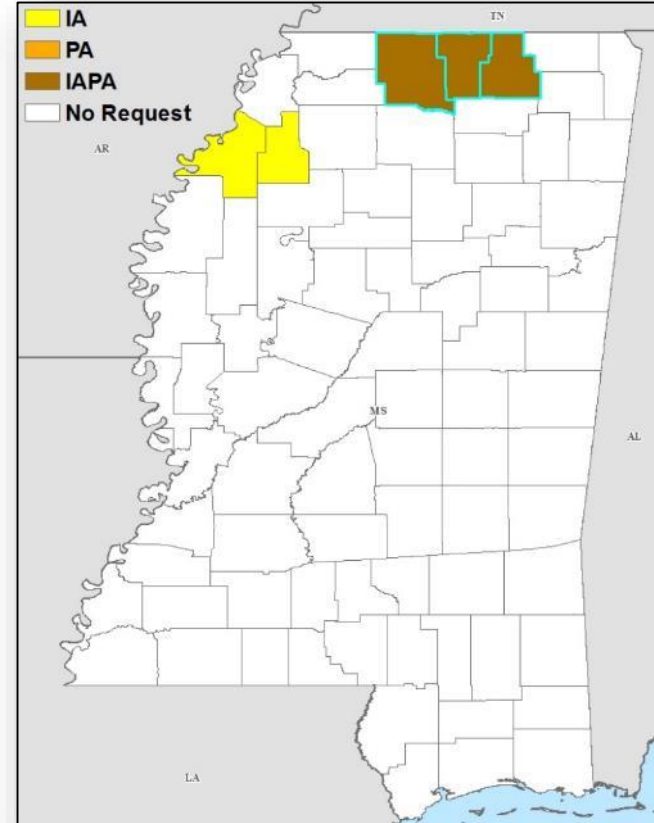
Declaration Requests in Process		Requests APPROVED (since last report)	Requests DENIED (since last report)
0	Date Requested	1	0
MS – DR – Severe Storms, Tornadoes, Straight-line winds and Flooding	December 31, 2015	Approved January 4, 2015	

Major Disaster Declaration Approved – MS



January 4, 2015

- President approved Major Disaster Declaration FEMA-4248-DR for State of Mississippi
- For severe storms, tornadoes, straight-line winds, and flooding during the period of December 23-28, 2015
- Specifically Provides:
 - Individual Assistance for five Counties
 - Public Assistance for three Counties
 - Hazard Mitigation statewide

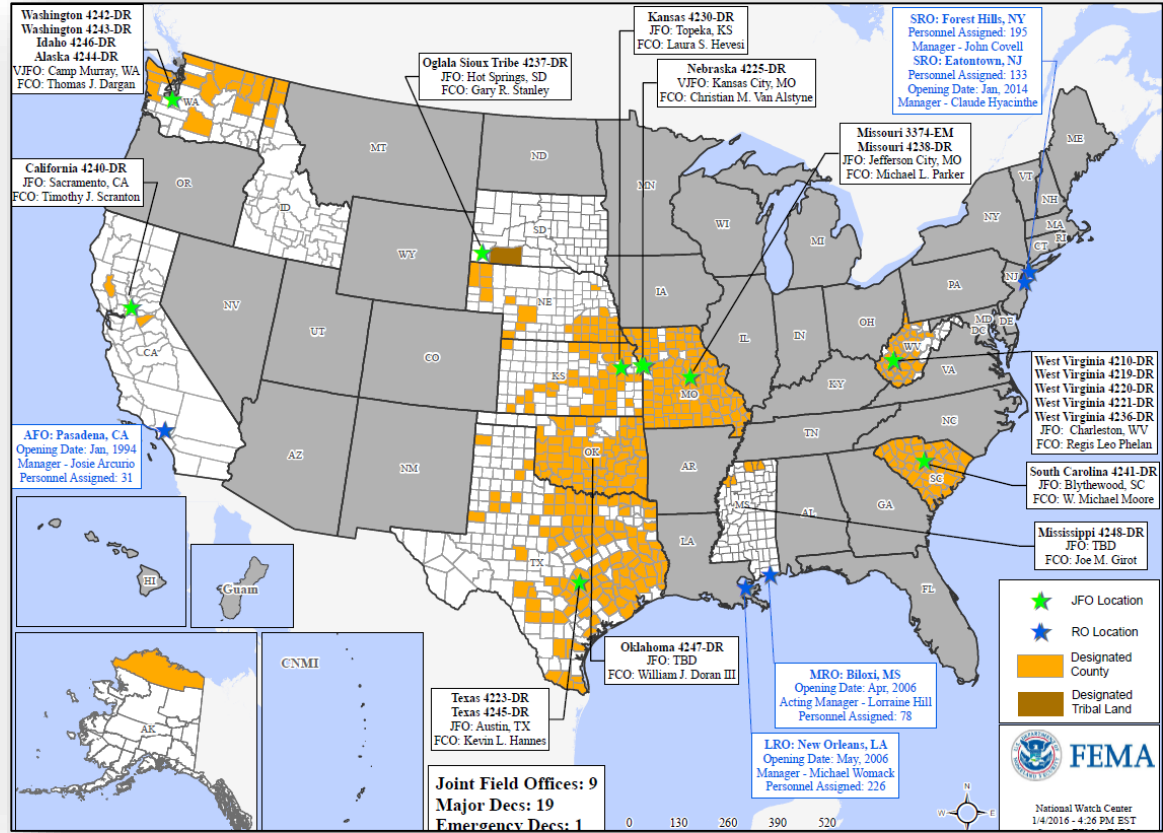


Disaster Amendments



Amendment	Effective Date	Action
Amendment No. 1 to FEMA-3374-EM-MO	1/4/2016	Adds 1 county for debris removal & emergency protective measures (Categories A & B) limited to direct federal assistance

Open Field Offices as of January 5



Joint Preliminary Damage Assessments



Region	State / Location	Event	IA/PA	Number of Counties		Start – End
				Requested	Complete	
IV	AL	Severe Weather & Flooding December 23, 2015 – continuing	PA	34	0	1/7 – TBD
VI	TX	Severe Weather & Tornadoes December 26, 2015 – continuing	IA	4(+1)	3 (+3)	12/30 – TBD
			PA	3 (+3)	0	1/4 - TBD
	AR	Severe Weather & Tornadoes December 26, 2015 – continuing	PA	38	0	1/6-TBD
	OK	Severe Weather & Tornadoes December 26, 2015 – continuing	PA	32	0	1/5-TBD
VII	MO	Severe Storms, tornadoes, straight line winds, heavy rains, flooding, & flash flooding December 22, 2015 & Continuing	IA	38 Counties & 1 City	0	1/5- TBD
X	WA	Severe Wind Storm November 30, 2015 – continuing	IA	23	0	1/5 – TBD
			PA	23	0	1/11 – TBD

FEMA Readiness – Deployable Teams /Assets



Deployable Teams/Assets									
Resource	Status	Total	FMC Available		Partially Available	Not Available	Detailed, Deployed, Activated	Comments	Rating Criterion
FCO	Yellow	39	21	54%	0	3	15	Only 2 Type1 FCOs are available	OFDC Readiness: FCO Green Yellow Red Type 1 3+ 2 1 Type 2 4+ 3 2 Type 3 4 3 2 FDRC 3 2 1
FDRC	Green	8	3	38%	0	0	5		
US&R	Green	28	27	96%	0	1	0	NM-TF1 (Red) - Personnel shortages	<ul style="list-style-type: none"> Green = Available/FMC Yellow = Available/PMC Red = Out-of-Service Blue = Assigned/Deployed
National IMAT	Green	3	3	100	0	0	0		<ul style="list-style-type: none"> Green: 3 avail Yellow: 1-2 avail Red: 0 avail (<i>Individual N-IMAT red if 50% of Section Chiefs and/or Team Leader is unavailable for deployment.</i>)
Regional IMAT	Yellow	13	6	46%	1	1	5	Deployed: RVI (Team 2) Deployed to TX RVII Deployed to MO RVIII Deployed to OST, SD (Available to re-deploy as needed) RIX (Team 2) Deployed to CA RX Deployed to WA PMC: RIX (Team 1) Reconstituting from CNMI NMC: RV (Team 1) Red – Personnel Shortages	<ul style="list-style-type: none"> Green: 7 or more avail Yellow: 4 - 6 teams available Red: > 8 teams deployed/unavailable <i>R-IMAT also red if TL Ops/Log Chief is unavailable & has no qualified replacement</i>
MCOV	Yellow	59	41	69%	0	12	6	2 MCOVs deployed to SC (FEMA-4241-DR) 4 MCOVs deployed to TX (FEMA-4245-DR)	<ul style="list-style-type: none"> Green = 80 – 100% avail Yellow = 60 – 79% avail Red = 59% or below avail Readiness remains 95%

FEMA Readiness – National/Regional Teams

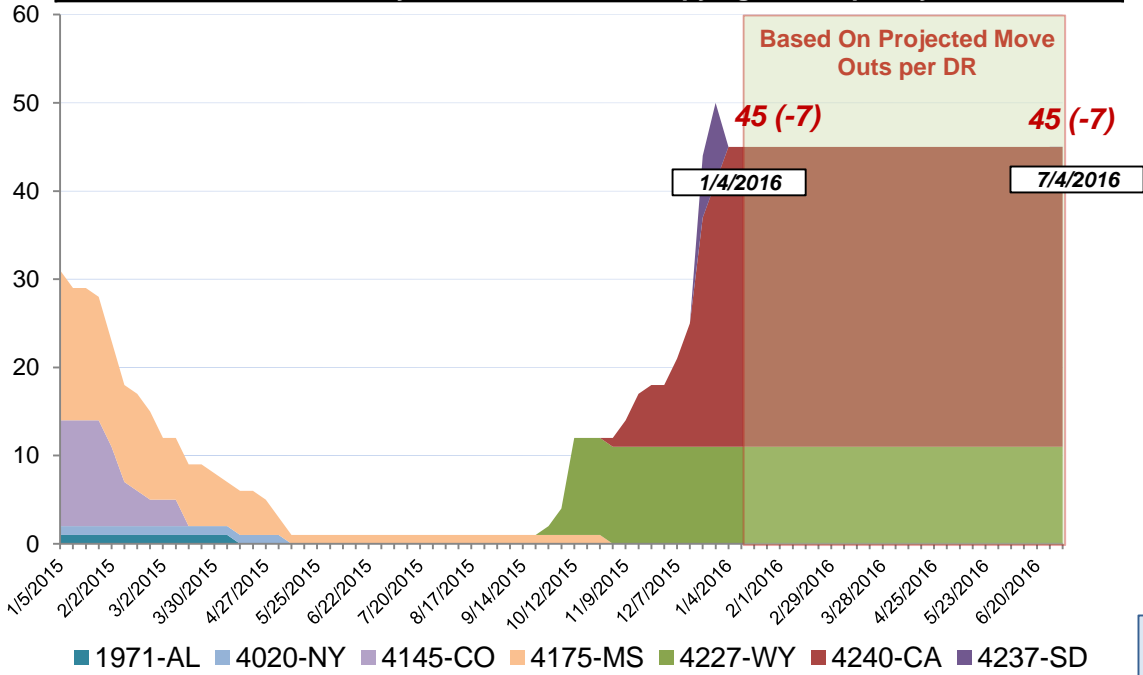


National/Regional Teams									
Resource	Status	Total	FMC Available		Partially Available	Not Available	Status	Comments	Rating Criterion
NWC		5	5	100%	0	0	Not Activated	Watch/Steady State (24/7)	<ul style="list-style-type: none"> • Green = FMC • Yellow = PMC • Red = NMC
NRCC		2	344	89%	0	44	Not Activated		
HLT		1	N/A	N/A	0	0	Not Activated		
DEST							Not Activated		
RRCCs		10	10	100%	0	0	Activated	Region VI Level 3 Region VII Level 3 (Day shift)	
RWCs/MOCs		10	10	100%	0	0	Activated	Region V Enhanced Watch (day shift)	

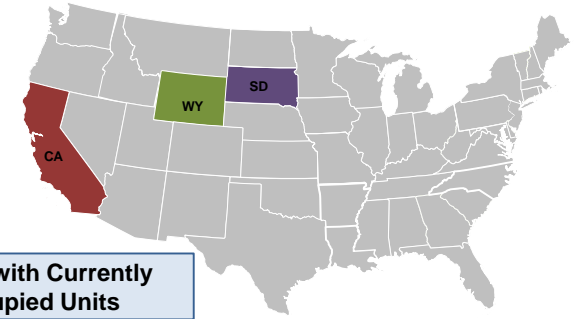
Direct Housing



Total Households in FEMA Direct Housing per State
 Past Year per Week, 1/5/2015 – 1/4/2016, Projected to 7/4/2016
 There are currently **45** Households Occupying **48** Temporary Units



DR	IA Declaration Date	Program End Date	Current # of Households in Direct Housing (Weekly Change)
4227-WY	7/7/2015	1/7/2017	11 (0)
4237-SD	8/7/2015	2/7/2017	0 (-8)
4240-CA	9/22/2015	3/22/2017	34 (+1)



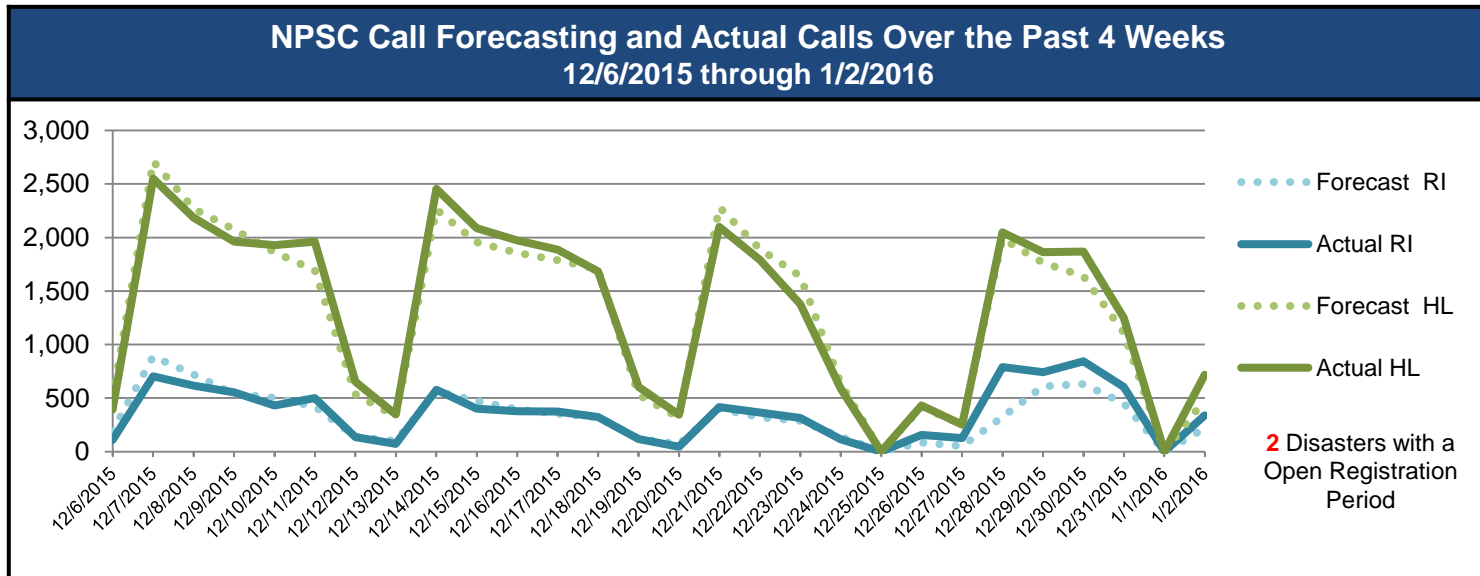
States with Currently Occupied Units

NPSC Activity



FEMA

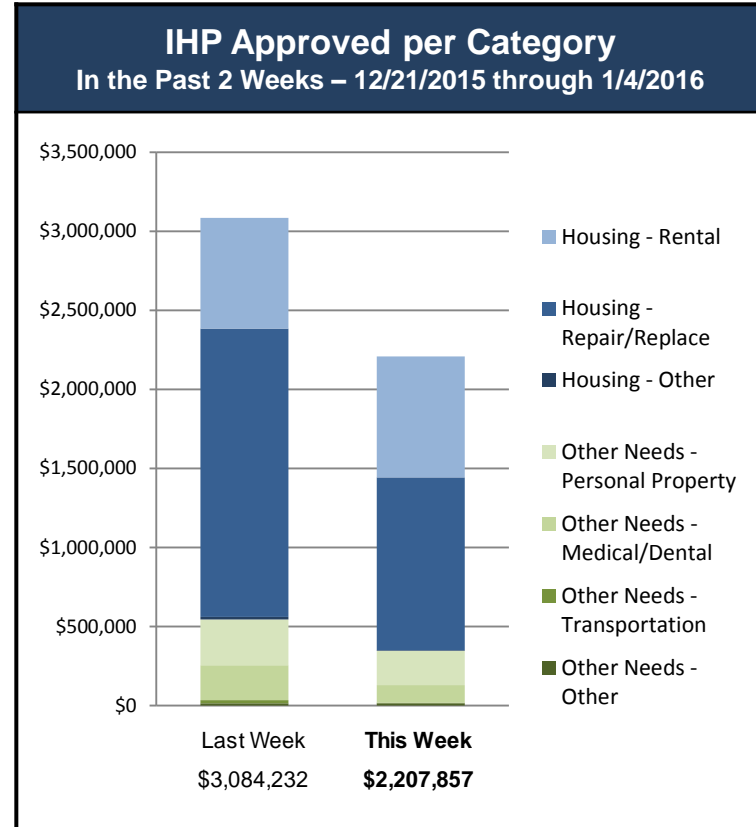
NPSC Call Activity in the Past Week 12/27/2015 through 1/2/2016				
Call Type	Projected Calls	Actual Calls	Average Answer Time	Maximum Delay Time
Registration Intake	2,151	3,256	00:12	5:56
Helpline	7,175	7,715	00:12	2:53
All Calls	9,326	10,971	00:12	5:56



Individual Assistance Activity



Individuals and Households Program Activity as of 01/04/2016 at 0000 EST						
	In Past 7 Days		Cumulative			
	Applicants Approved	Amount Approved	Applicants Approved	Amount Approved		
Open Registration Period	4241-SC Declared 10-05-2015 End Of Reg Period 01-04-2016					
	Housing Assistance	627	\$1,045,653.71	23,294	\$68,603,466.41	
	Other Needs Assistance	72	\$101,459.27	7,015	\$10,578,523.94	
	Total IHP	\$1,147,112.98		\$79,181,990.35		
	4245-TX Declared 11-25-2015 End Of Reg Period 01-25-2016					
	Housing Assistance	173	\$567,450.21	2,106	\$12,102,532.53	
	Other Needs Assistance	112	\$217,459.14	1,080	\$2,614,762.06	
	Total IHP	\$784,909.35		\$14,717,294.59		
	Other IHP Active	8 Declarations IHP Programmatically Open - Closed Registration *				
		Housing Assistance	79	\$248,746.73		
Other Needs Assistance		10	\$27,088.06			
Total IHP		\$275,834.79				
Total IHP Approved in Past Week		\$2,207,857.12				





FEMA

FEMA's mission is to support our citizens and first responders to ensure that as a nation we work together to build, sustain, and improve our capability to prepare for, protect against, respond to, recover from, and mitigate all hazards.