

The Disaster Center is dedicated to the idea that disaster mitigation is cost effective and individuals pursuing their own interest are the greatest potential force for disaster reduction.

Please consider making a small donation to the Disaster Center



When disaster mitigation is cost effective, we are on the road to bringing disasters to an end.



FEMA

Daily Operations Briefing

Tuesday, May 28, 2019

8:30 a.m. EDT

Significant Activity – May 25-28



FEMA

Significant Events:

- Flooding & Tornadoes – Central U.S.

Tropical Activity:

- Atlantic: No significant activity affecting U.S. interests
- [Eastern Pacific: Disturbance 1: Low \(10%\)](#)
- Central Pacific: No significant activity affecting U.S. interests
- Western Pacific: No significant activity affecting U.S. interests

Significant Weather:

- Flooding/flash flooding – Central U.S.
- Severe thunderstorms possible – [Upper Midwest to northern Mid-Atlantic and Northeast](#)
- Red Flag Warnings – NM and TX

Declaration Activity:

- [Major Disaster Declarations Approved – MT and OK](#)
- [Request for Major Disaster Declarations – ID and ND](#)
- [Request for Emergency Declarations – KS and LA](#)
- [Amendment No. 2 to FEMA-4428-DR-KY](#)
- [Amendment No. 10 to FEMA-4399-DR-FL](#)

**Hurricane Season begins in
3 days**

Flooding & Tornadoes – Central U.S.



FEMA

Current Situation:

A significant severe weather event began Monday night and continued into this morning; heavy rainfall, damaging straight-line winds, and dangerous tornadic activity spread northeastward from the Central/Southern Plains to the Great Lakes and Ohio Valley, and continued into the Northeast. Approximately 48 preliminary reports of tornado touchdowns across 13 states in the last 12 hours.

Lifeline Impacts:

Safety and Security

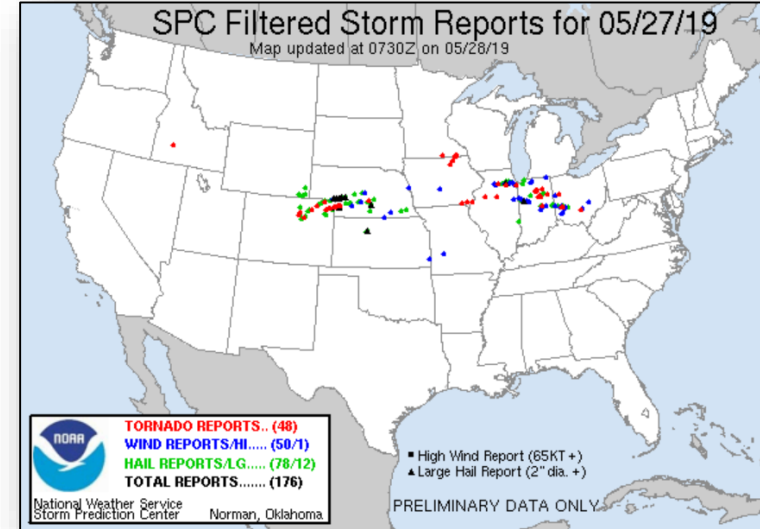
- OH: 3 preliminary tornado touchdowns reported overnight in OH (possible EF-4 near Dayton)
 - Significant home and property damage in Celina, OH (pop.10.5k) and Trotwood, OH (pop. 24k)
 - Downed power lines and trees, mass debris fields, multiple fires, and trapped individuals
- IN: Preliminary reports of 14 tornado touchdowns, 2 in/near Pendleton (pop. 4k), where at least 75 structures were damaged or destroyed; also isolated roadway debris fields and flash flooding
- OK: NWS confirmed an EF-3 tornado impacted El Reno, multiple additional touchdowns; hotel and trailer park damaged, Oklahoma City University, local church, and the state capital damaged
- IA: 3 reported tornados across NE Iowa;
- OK: 1k Residents in Braggs are cut off from services by floodwaters; power is expected to take a week to restore; a temporary road is being built to provide ingress/egress

Food, Water, Sheltering

- 13 shelters open with 261 (+71) occupants (*ARC Midnight Shelter Count*)
 - OK: 9 / 161 (+34)
 - KS: 2 / 48 (+40)
 - MO: 2 (-2) / 52 (-3)
- Mandatory/voluntary evacuations remain in effect for OK, AR (Fort Smith-500 homes), KS (Independence-pop 9k and Coffeyville-pop 10k)

Health & Medical

- OH: One fatality and 12+ injuries
- OK: Six confirmed fatalities and numerous injuries from May 21 - present
- KS: 25 injuries reported due to severe weather/flooding
- MO: 20 injuries reported due to flooding



Transportation

- Numerous highways and secondary roads closed or damaged in OK, AR, IA, and OH

Energy

- Minimal power outages across all impacted areas

Hazardous Materials:

- Multiple wastewater plants experienced bypasses; Muskogee wastewater plant is being shut down; Fort Gibson water and wastewater systems are without power

Flooding & Tornado – Central U.S.



FEMA

Response:

State/Local

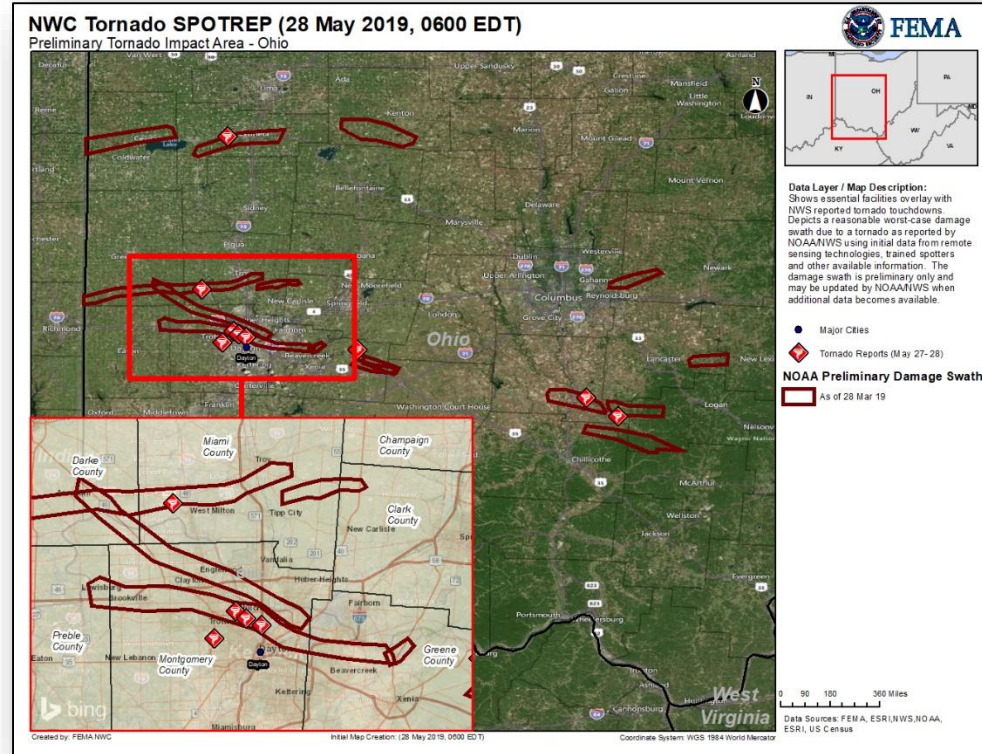
- KS and AR EOCs at Full Activation
 - KS Governor requested an Emergency Declaration May 25
- OK, MO, and IL EOCs at Partial Activation
- LA EOC at Monitoring
 - Governor requested an Emergency Declaration for 11 parishes
- National Guard activated in OK, KS, IA, and MO
- OH-TF1 activated as a Type 3 US&R State resource

FEMA Regions

- FEMA Region V
 - RWC: Steady State, monitoring 24/7
 - IMAT: Fully Mission Capable, prepared to respond
- FEMA Region VI
 - RWC: Steady State, monitoring 24/7
 - RRCC: Level III, with select ESFs (day shift only)
 - IMAT-1: Deployed to AR EOC
 - IMAT-2: Deployed to OK EOC
 - 1 LNO deployed to OK EOC; 2 LNOs deployed to AR EOC
- FEMA Region VII
 - RWC: **Steady State, monitoring 24/7**
 - RRCC: Level III (24/7); IMAT supporting RRCC
 - LNO deployed to KS EOC

FEMA Headquarters

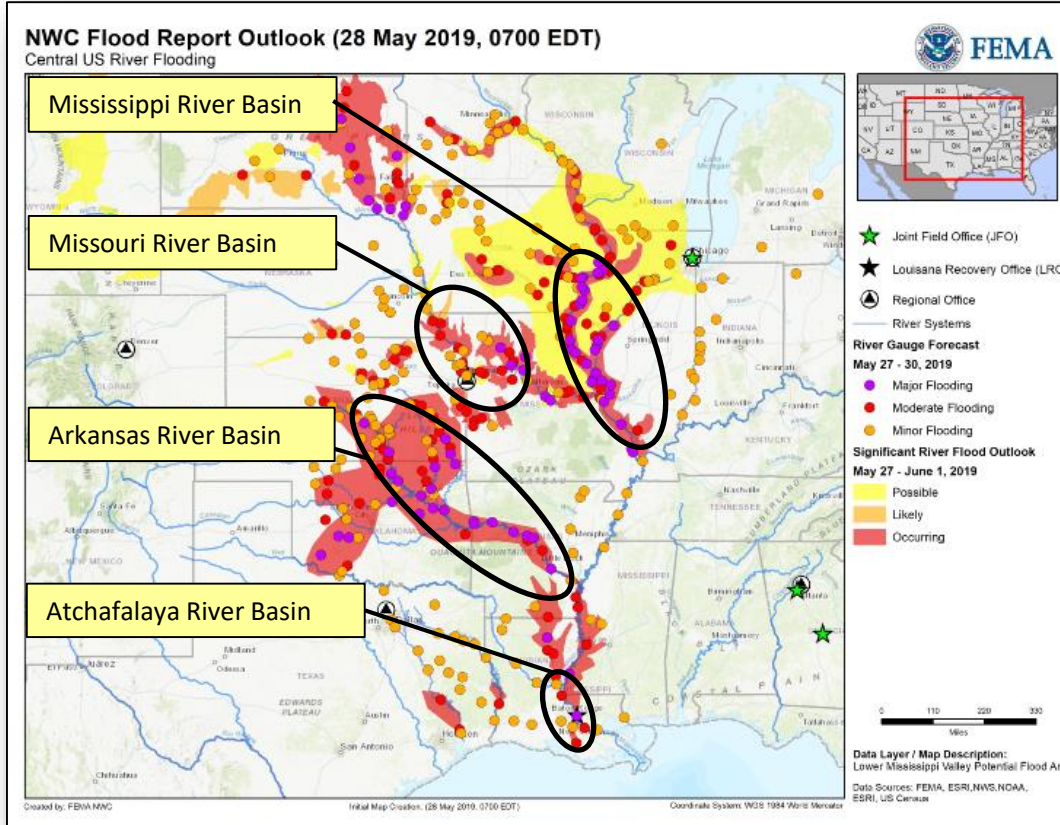
- NWC: Steady State, monitoring 24/7
- FEMA-3411-EM-OK approved on May 25 (PA for 10 counties)



Flooding – Central U.S.



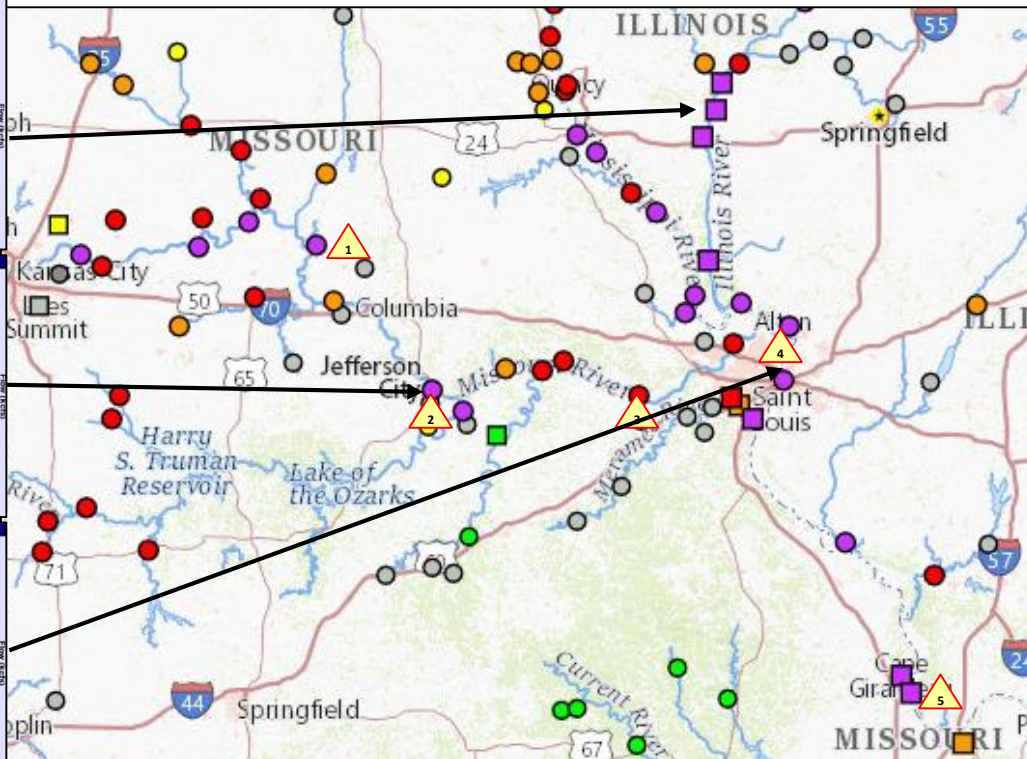
FEMA



Missouri River Basin



FEMA

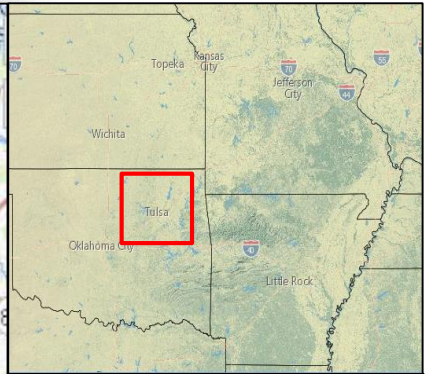
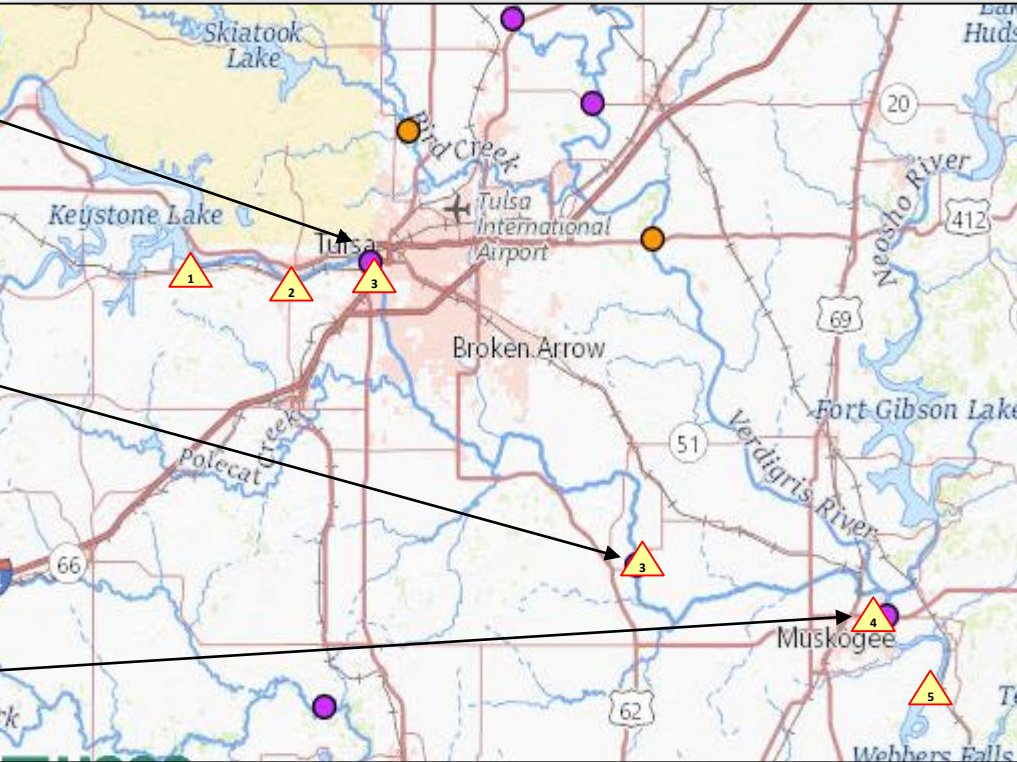
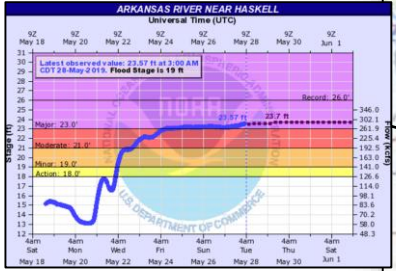
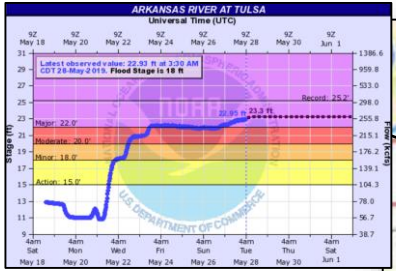


1. Missouri River at Glasgow crests on May 27, receding out of Major flood stage by Jun 1
2. Jefferson City will remain at Major Flood Stage into first of June, then rapid receding expected
3. Meramec River, Missouri River and Mississippi River converge near St. Louis. Area is prone to spring flooding each year
4. West Alton, MO issued Voluntary Evacuations due to near record flood levels on the Mississippi River
5. Mississippi River at Cape Girardeau expected to crest May 30 and remain in Major flood stage though early June. Several homes and structures in southern Cape Girardeau County may be inundated or cut off due to backwater flooding from the Diversion Channel. Evacuations may be required.

Arkansas River Basin



FEMA

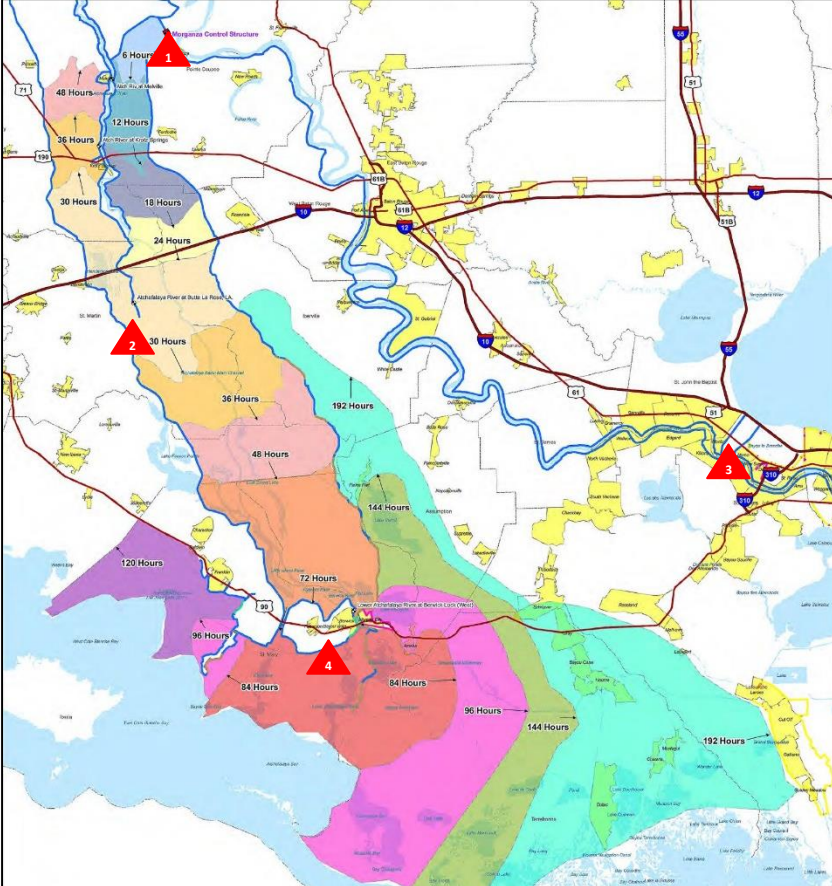


1. Keystone Dam release continues and will keep river levels high.
2. Town of Sand Springs: Voluntary Evacuations as Keystone Dam releases continue.
 - Officials identified potential industrial HAZMAT area near the river
 - City officials have mitigation plans in place
3. Arkansas River near Tulsa and Haskell has crested – expected to remain at Major flood stage through next week
4. Arkansas River near Muskogee expected to crest on May 27 just below record levels and remain in Major Flood for weeks
5. Small town of Bragg, OK isolated by flood waters – evacuations, sheltering, and mitigation ongoing

Atchafalaya River Basin



FEMA



Arrival Time

6 Hours	72 Hours
12 Hours	84 Hours
18 Hours	96 Hours
24 Hours	120 Hours
30 Hours	144 Hours
36 Hours	192 Hours
48 Hours	



1. Morganza is a large spillway about 4k feet long and 125 bays located on the west side of Mississippi River just north of Morganza, Louisiana

 - Mississippi River near the spillway expected to crest at 62ft (5 feet above opening thresholds)
 - USACE may open the spillway as early as Jun 2 (Decision point on May 28)
 - Slow release for 3 days then potential full opening
 - Flooding across numerous parishes (Primarily farming, agricultural & recreational camps)

Spillway has only been opened twice in its history (1973 & 2011). Each time the openings caused widespread impacts to the Louisiana farming industry & fisheries
2. Bayou Chene temporary flood gates installed to reduce backwater flood impacts to approx. 5k residents
3. Bonnet Carre Spillway – Opened twice in one year (historical)
4. Morgan City, LA – Populated city near the Gulf Coast end of the basin, has been managing flooding for several months, opening the spillway will cause additional flood potential

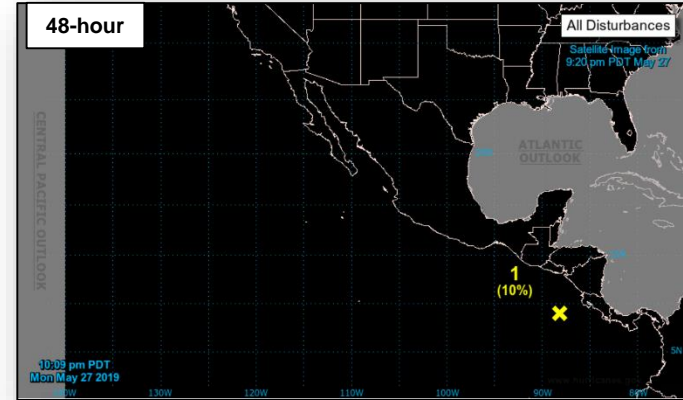
Tropical Outlook – Eastern Pacific



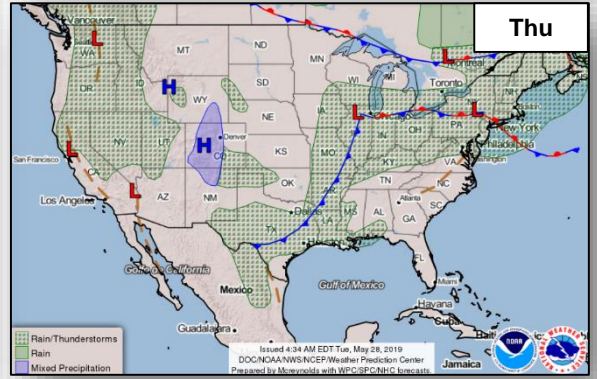
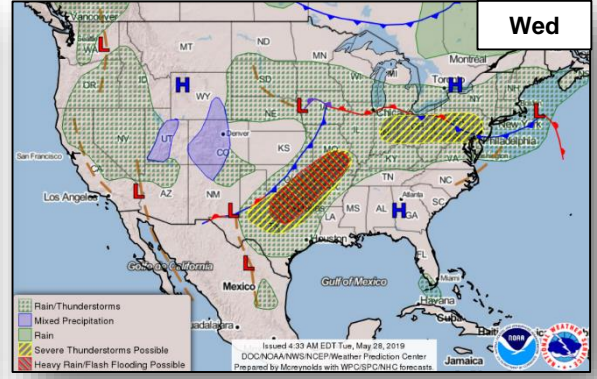
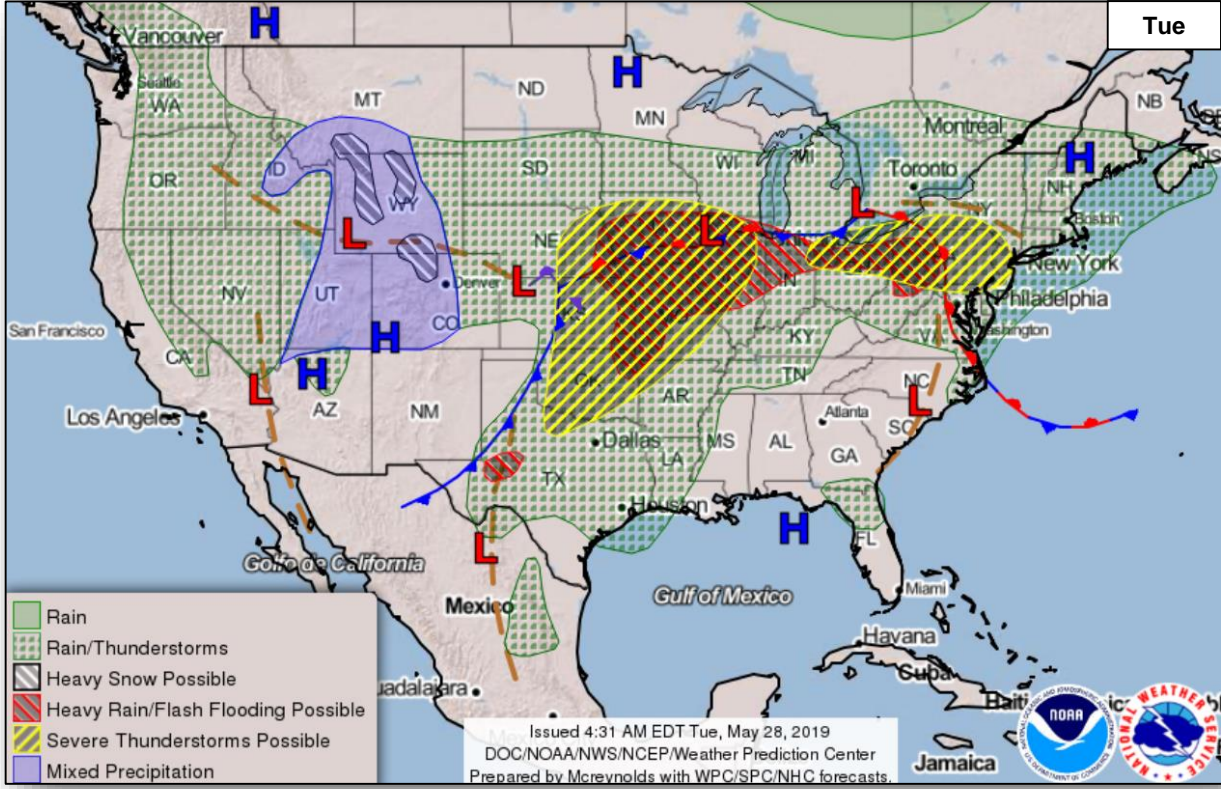
FEMA

Disturbance 1 (as of 2:00 a.m. EDT)

- Over portions of Costa Rica, Nicaragua, and adjacent Pacific waters
- Formation chance through 48 hours: Low (10%)
- Formation chance through 5 days: Low (10%)
- No threat to U.S. interests



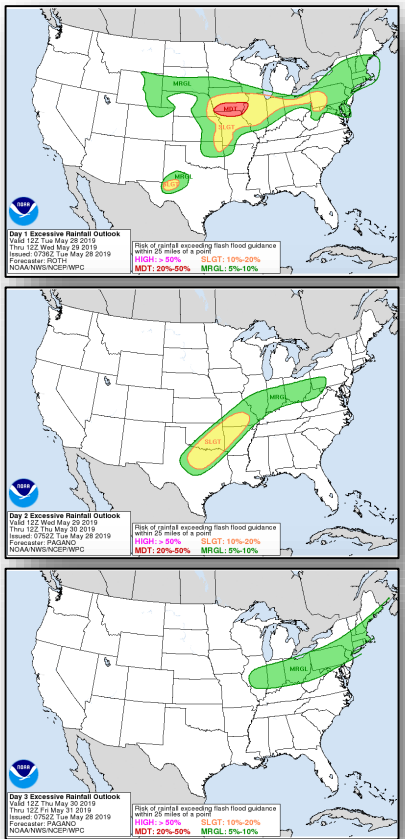
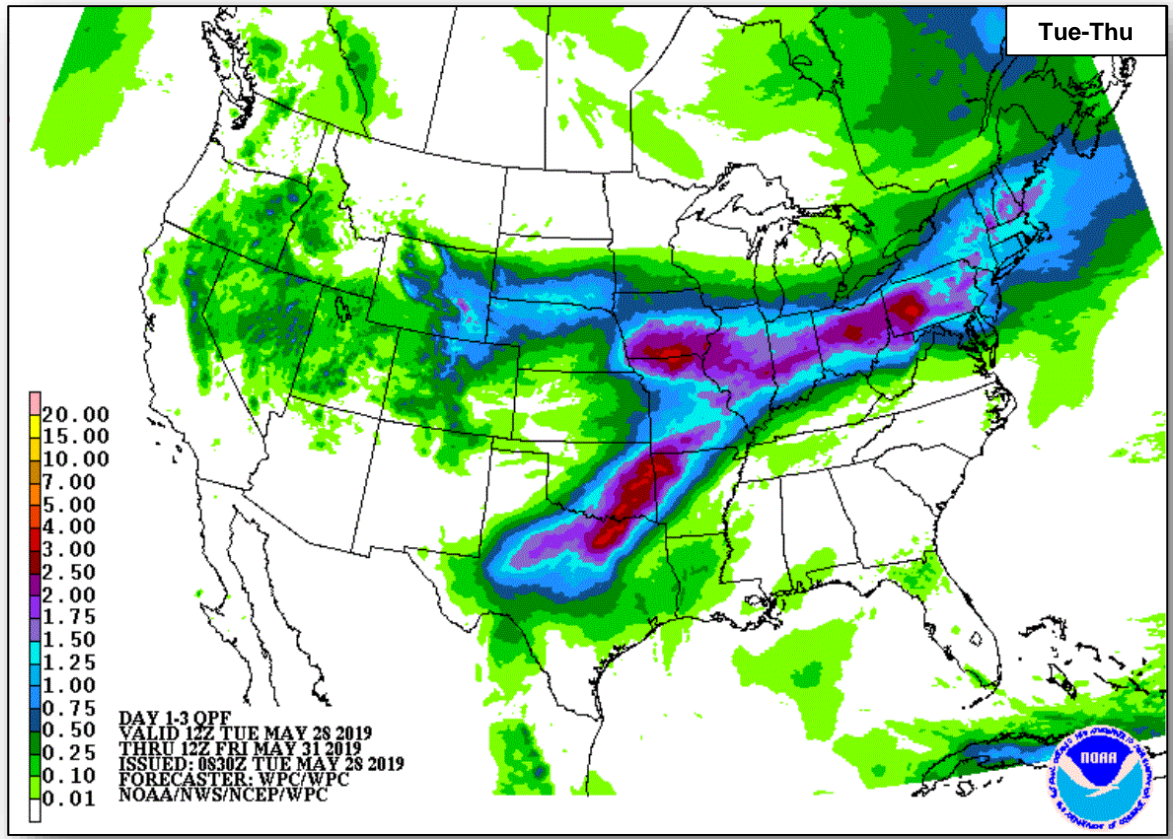
National Weather Forecast



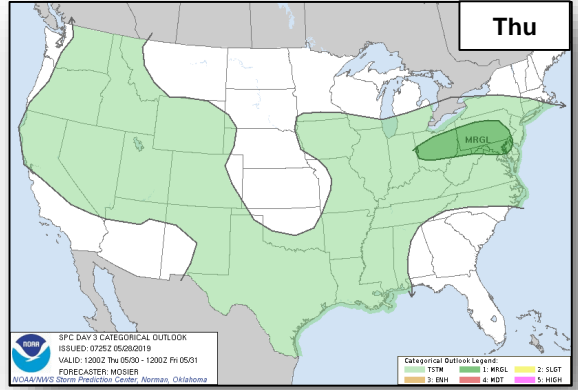
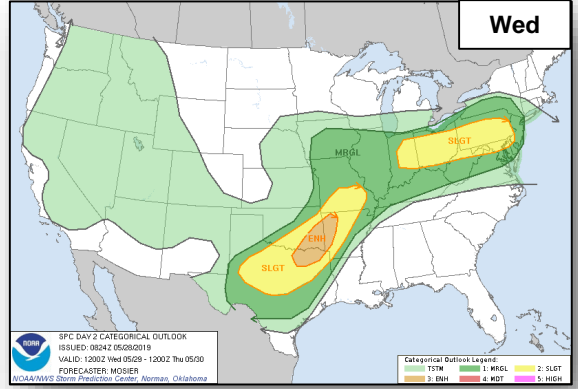
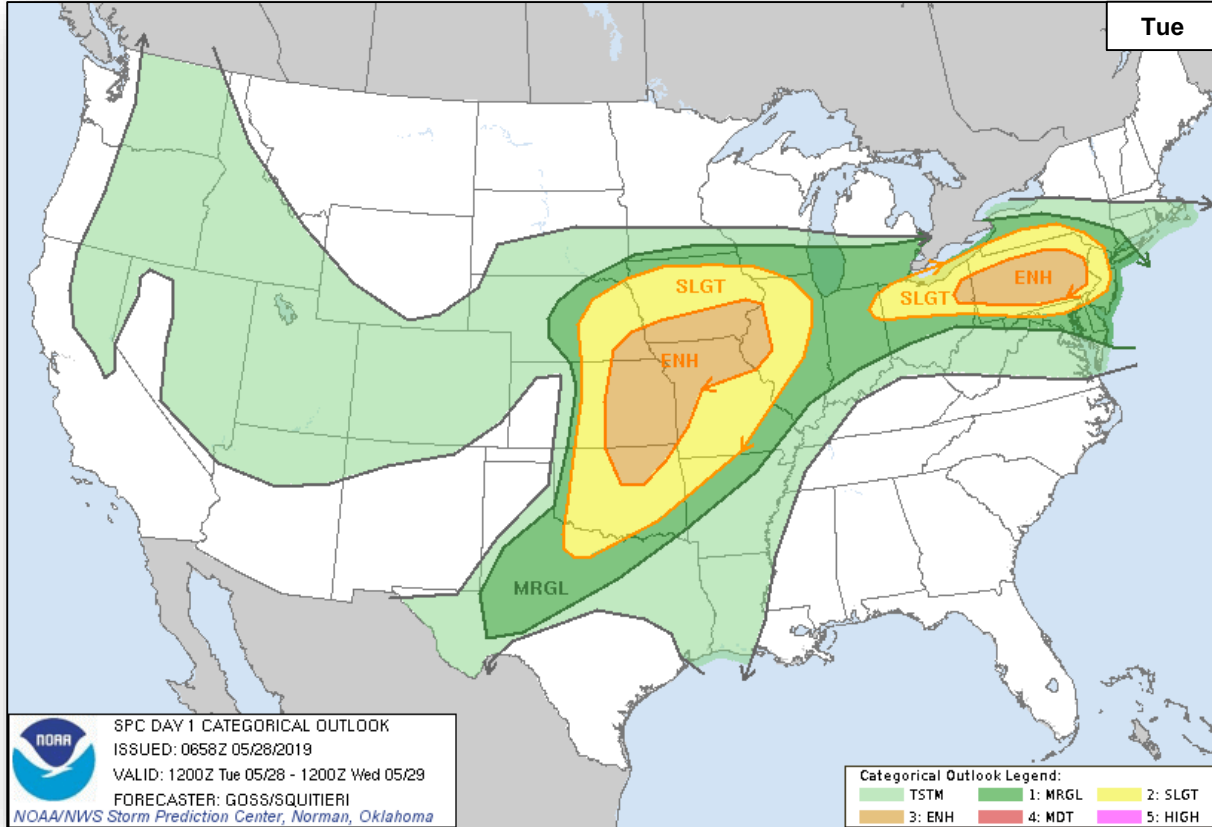
Precipitation Forecast



FEMA



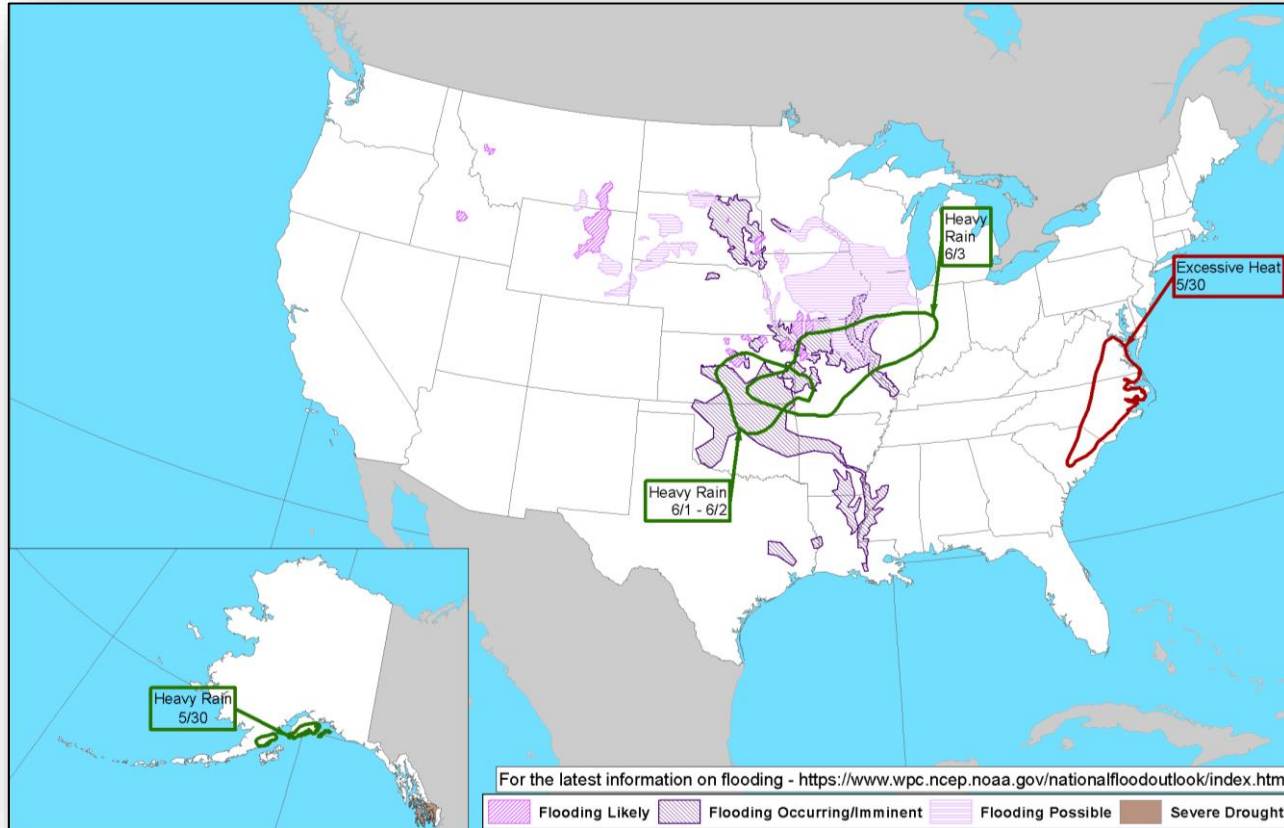
Severe Weather Outlook



Hazards Outlook – May 30 – June 3



FEMA



Joint Preliminary Damage Assessments



FEMA

Region	State / Location	Event	IA/PA	Number of Counties		Start – End
				Requested	Complete	
IV	MS	Severe weather, tornadoes and flooding April 13-14, 2019	IA	0	0	N/A
			PA	8	4	5/21 – TBD
V	MI	Severe weather and flooding May 1-3, 2019	IA	1	0	5/28-TBD
			PA	0	0	N/A
VI	OK*	Severe weather April 29, 2019	IA	0	0	N/A
			PA	25	9	5/16 – TBD

**PDAs temporarily suspended*

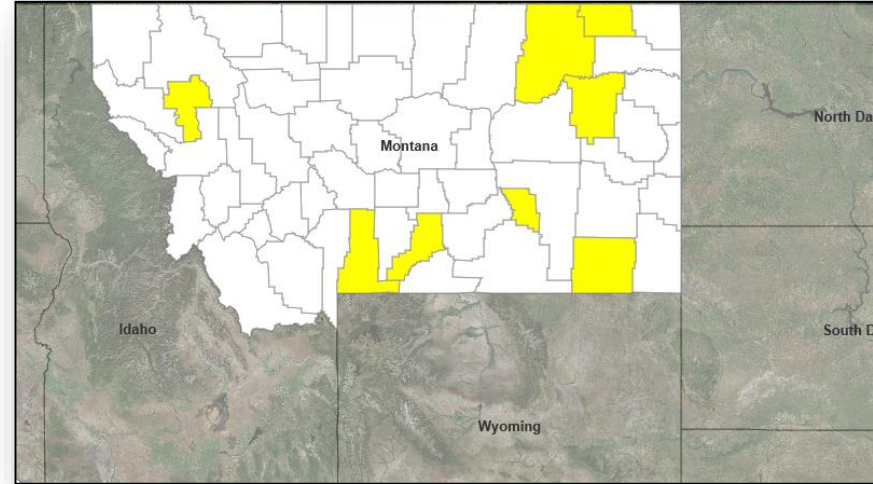
Declaration Approved



FEMA

FEMA-4437-DR-Montana

- Major Disaster Declaration was approved on May 24, 2019 for the State of Montana
- For flooding that occurred March 20 to April 10, 2019
- Provides:
 - Public Assistance for eight counties
 - Hazard Mitigation statewide
- FCO is Nathan Knapp



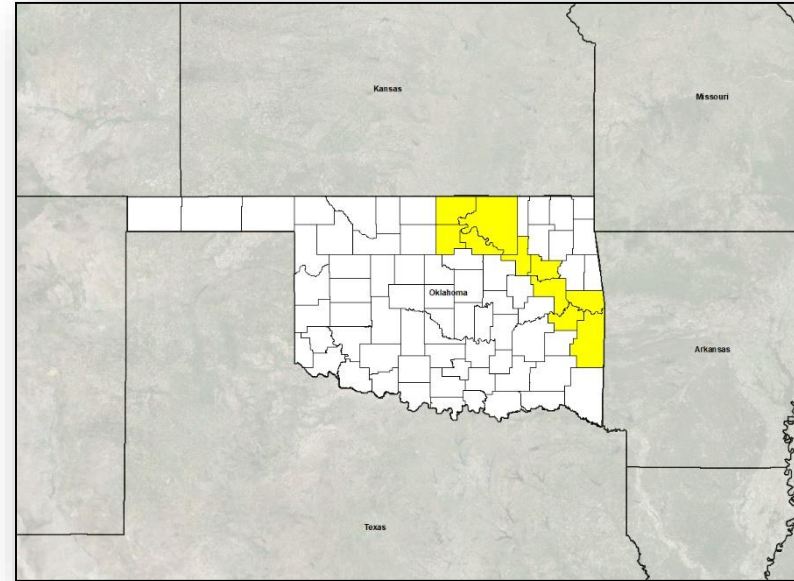
Declaration Approved



FEMA

FEMA-3411-EM-Oklahoma

- Emergency Declaration was approved on May 25, 2019 for the State of Oklahoma
- For flooding beginning on May 7, 2019 and continuing
- Provides:
 - Emergency protective measures (Category B), limited to direct federal assistance, under the Public Assistance program at 75% federal funding for 10 counties
- FCO is Gerard M. Stolar



■ PA

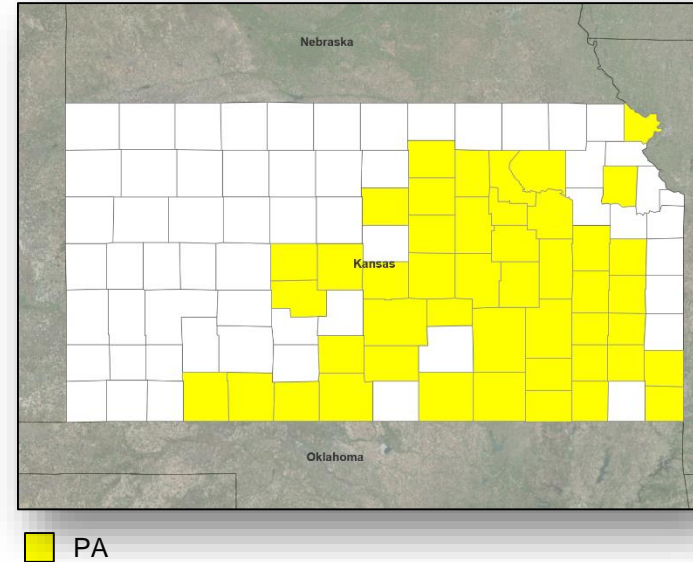
Declaration Request



FEMA

Kansas

- The Governor requested an Emergency Declaration on May 25 2019
- For severe storms, tornadoes, straight-line winds, flooding, and mudslides beginning April 28, 2019, and continuing
- Requesting Public Assistance for 46 counties



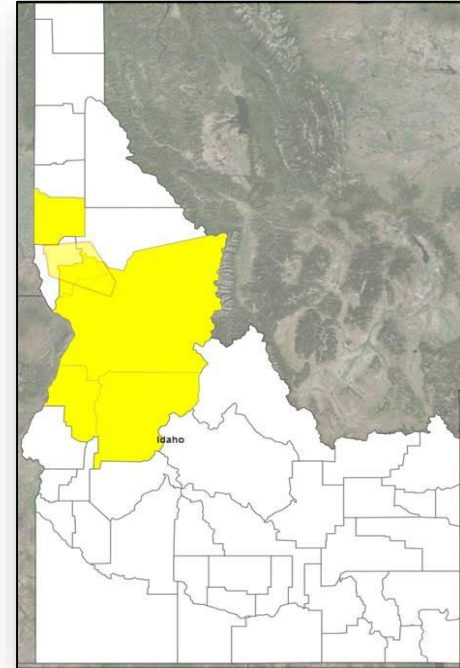
Declaration Request



FEMA

Idaho

- The Governor requested a Major Disaster Declaration on May 22, 2019
- For severe storms, flooding, landslides and mudslides during the period of April 7 - 13, 2019
- Requesting:
 - Public Assistance for 5 counties and the Nez Perce Reservation
 - Hazard Mitigation statewide



PA

Tribal boundary

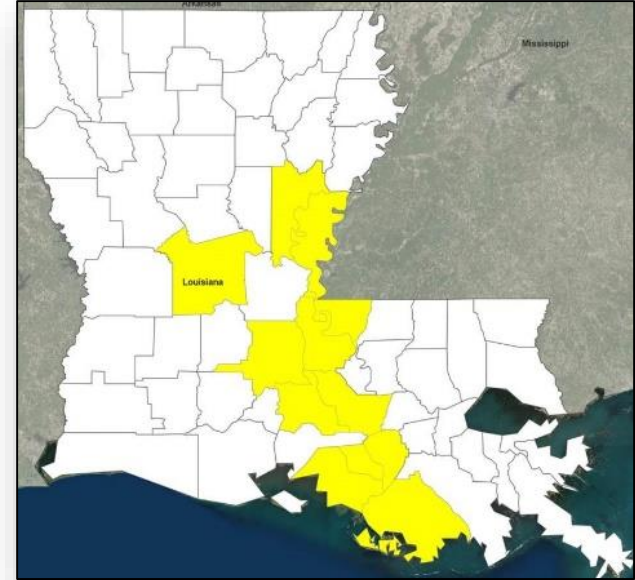
Declaration Request



FEMA

Louisiana

- The Governor requested an Emergency Declaration on May 24, 2019
- For flooding beginning April 24, 2019 and continuing
- Requesting Public Assistance (Category B), including direct federal assistance, for 11 parishes



■ PA

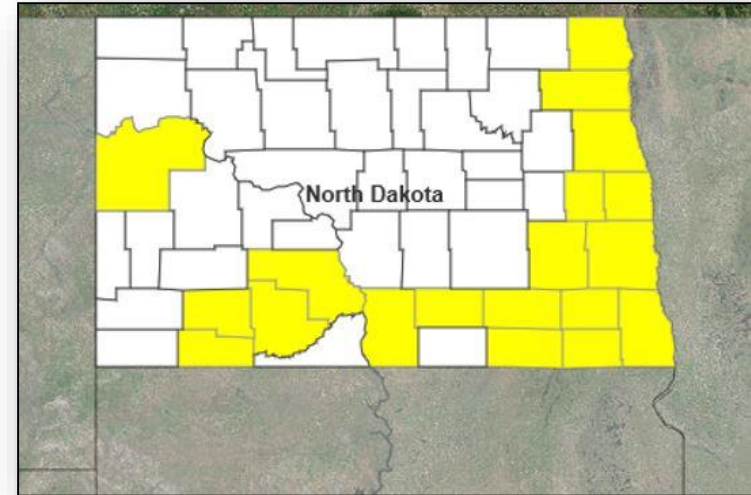
Declaration Request



FEMA

North Dakota

- The Governor requested a Major Disaster Declaration on May 24, 2019
- For flooding during the period of March 21 to April 28, 2019
- Requesting:
 - Public Assistance for 19 counties
 - Hazard Mitigation statewide



■ PA

Disaster Requests & Declarations



Declaration Requests in Process					Requests APPROVED (since last report)	Requests DENIED (since last report)
6	IA	PA	HM	Date Requested	2	0
MT – Flooding		X	X	May 13, 2019	May 24, 2019	
LA – DR Severe Storms and Tornadoes	X	X	X	May 21, 2019		
SD – DR Severe Winter Storm, Snowstorms, and Flooding	X	X	X	May 21, 2019		
ID – DR Severe Storms, Flooding, Landslides, and Mudslides		X	X	May 22, 2019		
ND – DR Flooding		X	X	May 24, 2019		
OK –EM Severe Storms, Tornadoes, Straight-line Winds, and Flooding		X		May 24, 2019	May 25, 2019	
LA – EM Flooding		X		May 24, 2019		
KS – EM Severe storms, tornadoes, straight-line winds, flooding, and mudslides		X		May 25, 2019		

Disaster Amendments



FEMA

Amendment	Date Issued	Action
Amendment No. 2 to FEMA-4428-DR-KY	May 24, 2019	Adds 2 counties for Public Assistance
Amendment No. 10 to FEMA-4399-DR-FL	May 24, 2019	Amends the cost-sharing arrangements



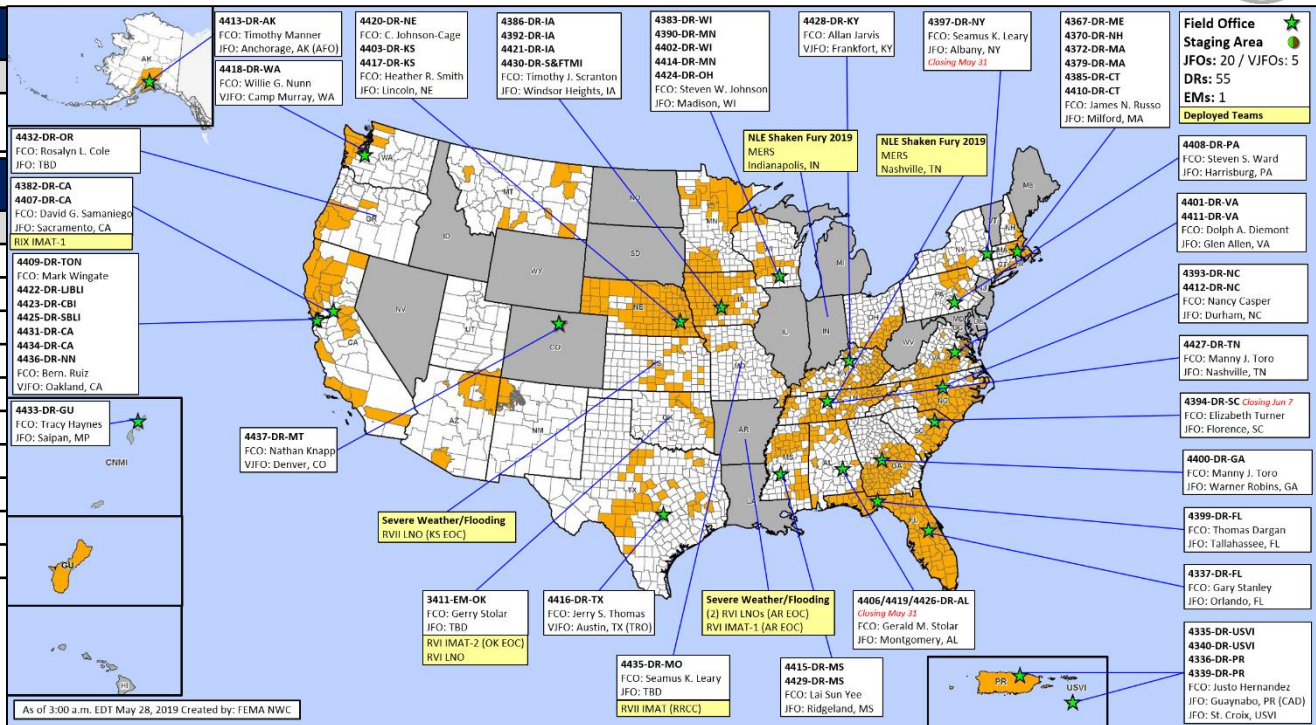
FEMA

FEMA Common Operating Picture

FEMA HQ	
NWC	NRCC
Monitoring	Rostered

FEMA REGIONS		
WATCH	RRCC	
Monitoring	I	Rostered
Monitoring	II	Rostered
Monitoring	III	Rostered
Monitoring	IV	Rostered
Monitoring	V	Rostered
Monitoring	VI	Level III
Monitoring	VII	Level III
Monitoring	VIII	Rostered
Monitoring	IX	Rostered
Monitoring	X	Rostered

Activation Details
 RVI: Severe weather (day shift)
 RVII: Severe weather (day shift)



N-IMATs	
3 Teams	
East	
West	
Crisis	

R-IMATs	
>7 Teams	
I	
II	
III	
IV-1	
IV-2	
V	
VI-1	AR
VI-2	OK
VII	MO
VIII	
IX-1	CA
IX-2	
X	

FMC	PMC
NMC	Deployed

Team:	US&R	MERS	FCOs	FDRCs	IM WORKFORCE
Status	(>66%)	(>66%)	(≤1Type 1)	(=2)	
Assigned:	28	36	29	12	13,331 (HC)
Unavailable	1 (+1)	0	0	0	3,867 ▼
Deployed:	0	0	25	10	5,599 ▼
Available:	27 (-1)	36	4	2	3,865 / 29% ▲

IM CADRE AVAILABILITY SUMMARY
Cadres with 25% or Less Availability
EHP 6% (32/493); ER 10% (6/60); FL 16% (24/152); HM 20% (226/1129); IT 24% (159/658); LOG 22% (292/1325); OPS 21% (54/263); PA 8% (196/2456); PLAN 16% (60/387); SAF 13% (7/53); SEC 17% (21/125)



FEMA

FEMA's mission is helping people before, during, and after disasters.

Click [here](#) to subscribe to this briefing.