

The Disaster Center is dedicated to the idea that disaster mitigation is cost effective and individuals pursuing their own interest are the greatest potential force for disaster reduction.

Please consider making a small donation to the Disaster Center



When disaster mitigation is cost effective, we are on the road to bringing disasters to an end.



FEMA

Daily Operations Briefing

Monday, May 27, 2019

8:30 a.m. EDT

Significant Activity – May 26-27



FEMA

Significant Events:

- Memorial Day
- Flooding & Tornado – Central U.S.

Tropical Activity:

- Atlantic: No significant activity affecting U.S. interests
- Eastern Pacific: Disturbance 1: Low (20%)
- Central Pacific: No significant activity affecting U.S. interests
- Western Pacific: No significant activity affecting U.S. interests

Significant Weather:

- Flooding/flash flooding – Central U.S.
- Severe thunderstorms possible – Central Plains to Ohio Valley
- Critical Fire Weather and Red Flag Warnings – NM and TX

Declaration Activity:

- Emergency Declaration Request – KS

**Hurricane Season begins in
4 days**

Flooding & Tornadoes – Central U.S.



FEMA

Current Situation:

Severe weather and heavy rainfall continued across portions of the central U.S., prompting wide-spread Tornado and Flash Flood Warnings and increasing river and reservoir levels. **A significant severe weather event is possible Monday evening into Tuesday from the Central and Southern Plains eastward to the Ohio Valley.** The threat includes the potential for strong tornadoes (EF2+), very large hail (in excess of 2" in diameter), and damaging winds (in excess of 75 mph)

Lifeline Impacts:

Safety and Security:

- OK: NWS confirmed an EF-3 tornado impacted El Reno; hotel and trailer park damaged
- OK: Oklahoma City: Oklahoma City University, local church, and the state capital damaged
- OK: 1k Residents in Braggs are cut off from services by floodwaters; power is expected to take a week to restore; a temporary road is being built to provide ingress/egress

Food, Water, Sheltering

- 15 shelters open with 190 (-11) occupants (*ARC Midnight Shelter Count*)
 - OK: 9 (-2) / 127 (+26)
 - KS: 2 / 8 (-26)
 - MO: 4 (+2) / 55 (+5)
 - Mandatory/voluntary evacuations remain in effect for OK and AR

Health & Medical:

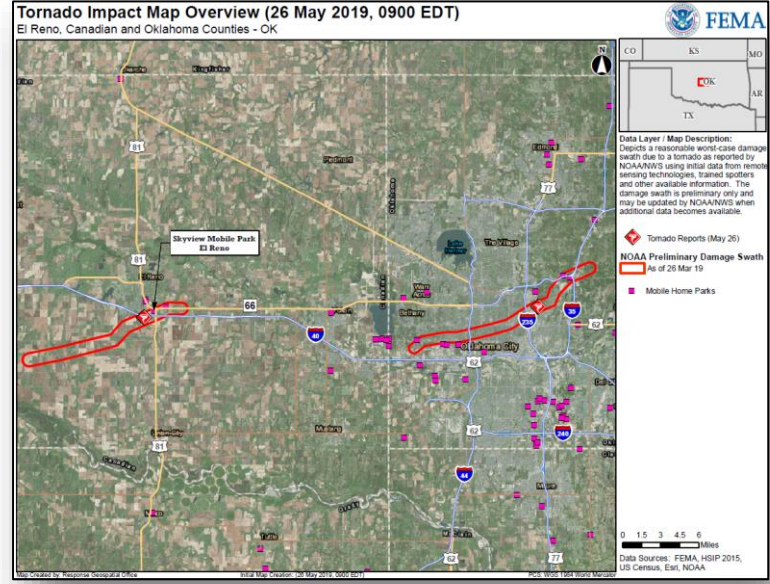
- OK: Two confirmed fatalities and 83 injuries reported
- MO: 20 injuries attributed to flooding

Transportation:

- Numerous highways and secondary roads closed or damaged in OK and AR
- **Previous unsecure barges have been secured; river travel unobstructed**

Hazardous Materials:

- Multiple wastewater plants experienced bypasses; Muskogee wastewater plant is being shut down; Fort Gibson water and wastewater systems are without power
- Some areas under precautionary boil water orders



Flooding & Tornado – Central U.S.



FEMA

Response:

State/Local

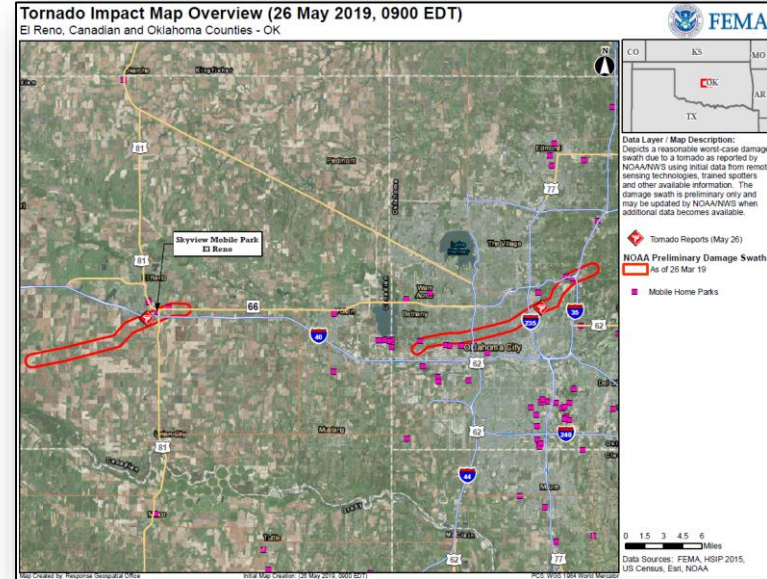
- KS EOC at Full Activation
- AR EOC at Full Activation
- OK, MO, and IL EOCs at Partial Activation
- LA EOC at Monitoring; Governor requested an Emergency Declaration for 11 parishes
- OK, KS, and IA National Guards activated

FEMA Regions

- FEMA Region V
 - RWC: Steady State, monitoring 24/7
 - IMAT: Fully Mission Capable, prepared to respond
- FEMA Region VI
 - RWC: Steady State, monitoring 24/7
 - RRCC: Level III, with select ESFs (day shift only)
 - IMAT-1: **Deploying to AR EOC (arriving this afternoon)**
 - IMAT-2: Deployed to OK EOC
 - 1 LNO deployed to OK EOC; 2 LNOs deployed to AR EOC
- FEMA Region VII
 - RWC: Enhanced Watch, 24/7
 - LNO deployed to KS EOC

FEMA Headquarters

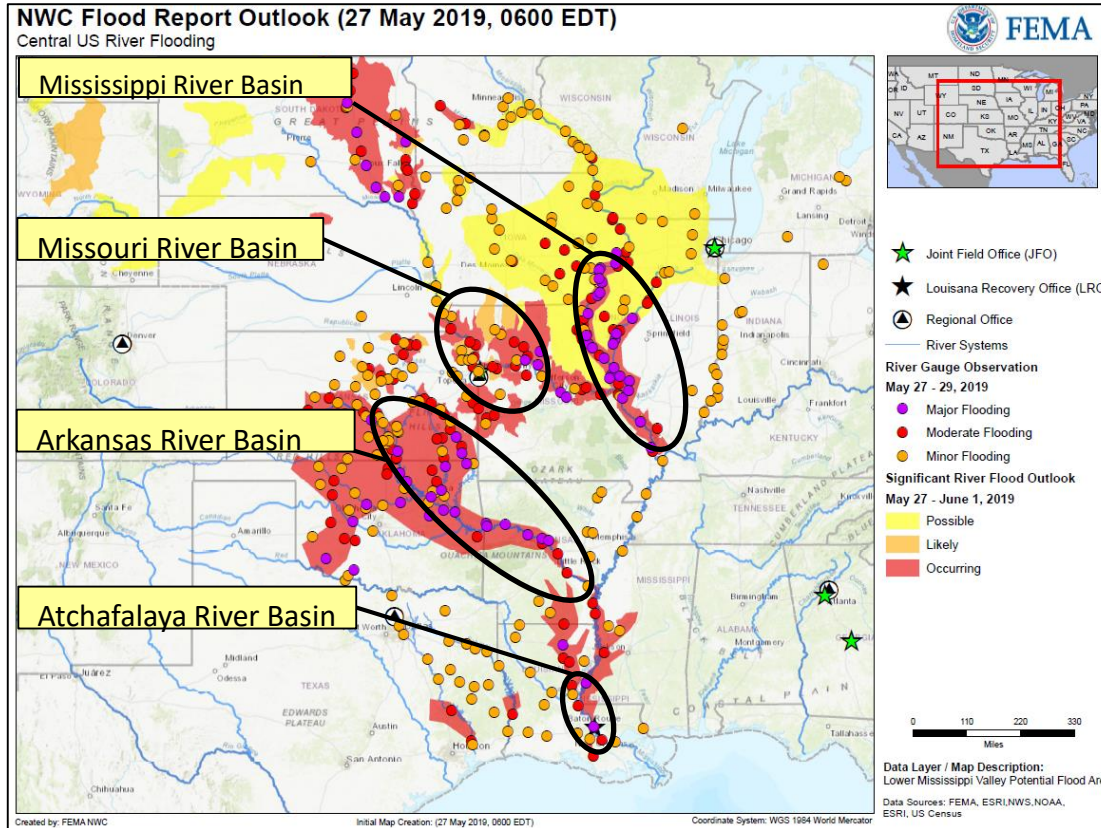
- NWC: Steady State, monitoring 24/7
- **FEMA-3411-EM-OK approved for 10 counties**



Flooding – Central U.S.



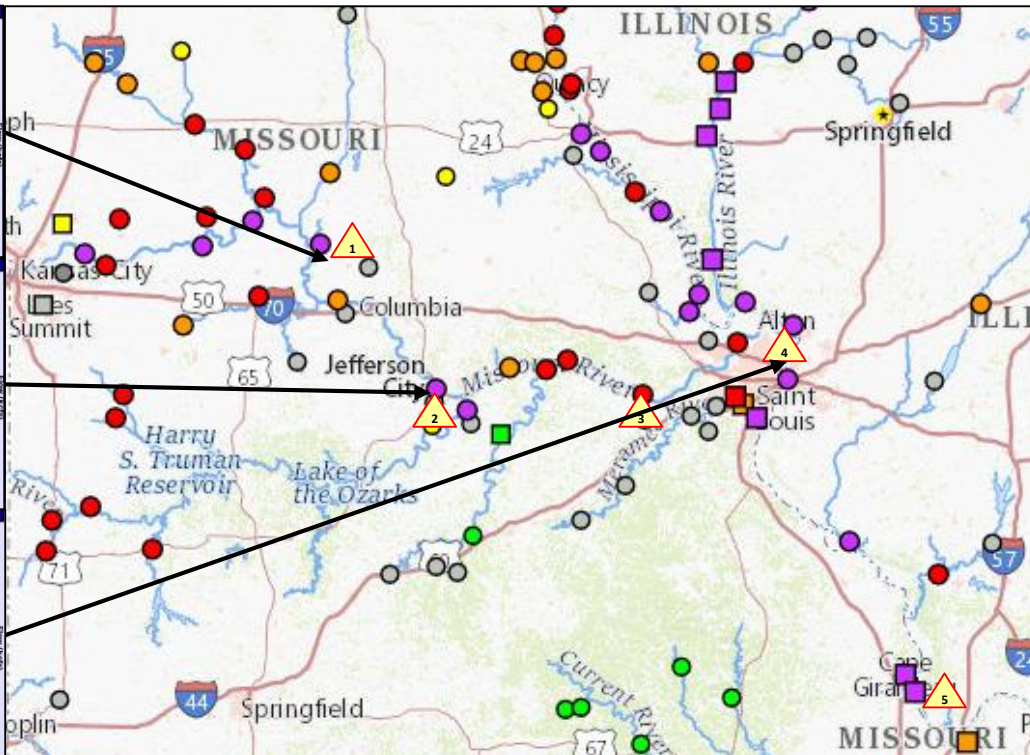
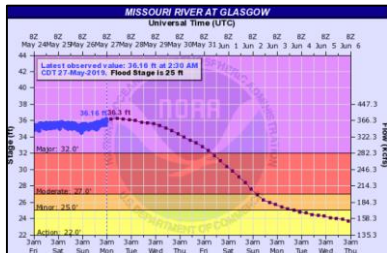
FEMA



Missouri River Basin



FEMA

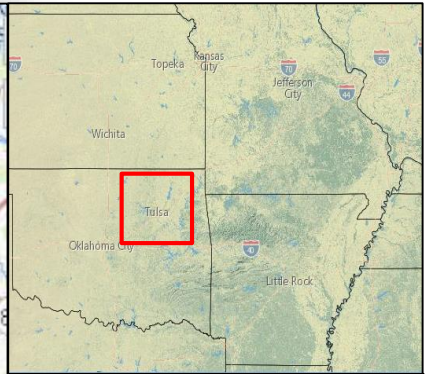
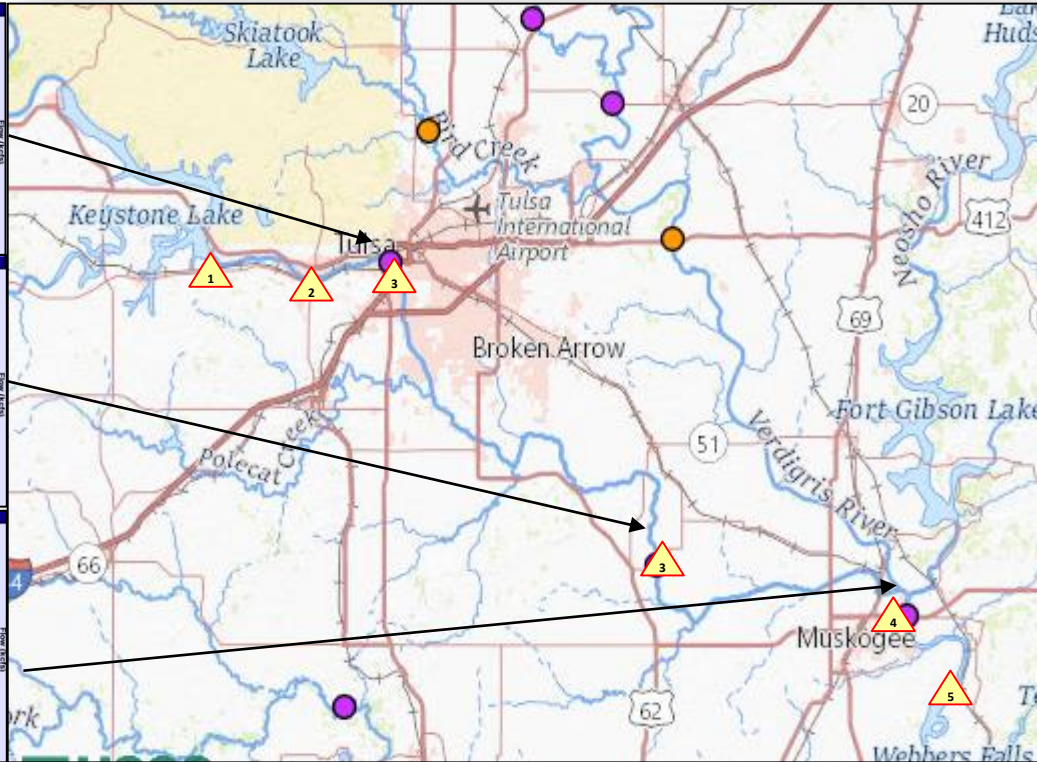
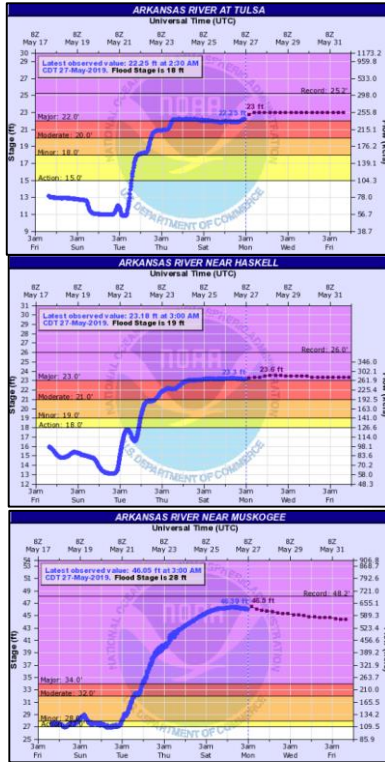


1. Missouri River at Glasgow crests on May 27, receding out of Major flood stage by Jun 1
2. Jefferson City will remain at Major Flood Stage into first of June, then rapid receding expected
3. Meramec River, Missouri River and Mississippi River converge near St Louis. Area is prone to spring flooding each year
4. West Alton, MO issued Voluntary Evacuations due to near record flood levels on the Mississippi River
5. Mississippi River at Cape Girardeau expected to crest May 30 and remain in Major flood stage though early June. Several homes and structures in southern Cape Girardeau County may be inundated or cut off due to backwater flooding from the Diversion Channel. Evacuations may be required.

Arkansas River Basin



FEMA

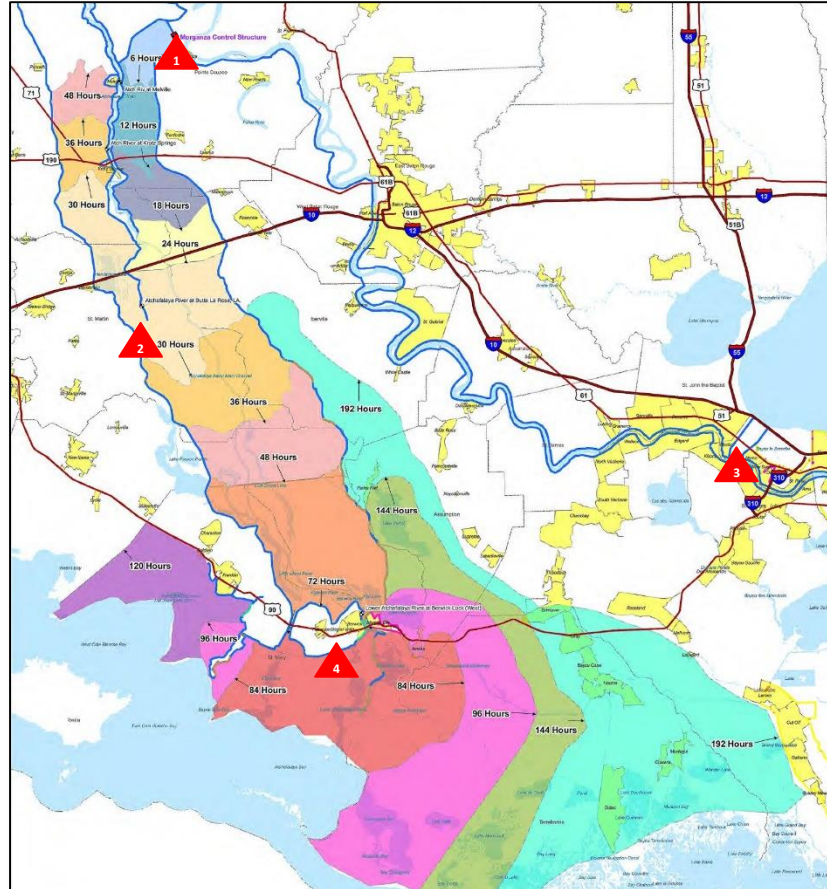


1. Keystone Dam release continues and will keep river levels high.
2. Town of Sand Springs: Voluntary Evacuations as Keystone Dam releases continue.
 - Officials identified potential industrial HAZMAT area near the river
 - City officials have mitigation plans in place
3. Arkansas River near Tulsa and Haskell has crested – expected to remain at Major flood stage through next week
4. Arkansas River near Muskogee expected to crest on May 27 just below record levels and remain in Major Flood for weeks
5. Small town of Bragg, OK isolated by flood waters – evacuations, sheltering, and mitigation ongoing

Atchafalaya River Basin



FEMA



Arrival Time



1. Morganza is a large spillway about 4k feet long and 125 bays located on the west side of Mississippi River just north of Morganza, Louisiana
 - Mississippi River near the spillway expected to crest at 62ft (5 feet above opening thresholds)
 - USACE may open the spillway as early as Jun 2 (Decision point on May 28)
 - Slow release for 3 days then potential full opening
 - Flooding across numerous parishes (Primarily farming, agricultural & recreational camps)

Spillway has only been opened twice in its history (1973 & 2011). Each time the openings caused widespread impacts to the Louisiana farming industry & fisheries

2. Bayou Chene temporary flood gates installed to reduce backwater flood impacts to approx. 5k residents
3. Bonnet Carre Spillway – Opened twice in one year (historical)
4. Morgan City, LA – Populated city near the Gulf Coast end of the basin, has been managing flooding for several months, opening the spillway will cause additional flood potential

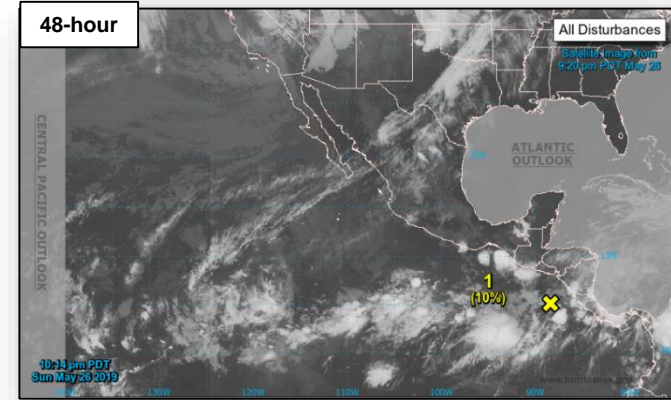
Tropical Outlook – Eastern Pacific



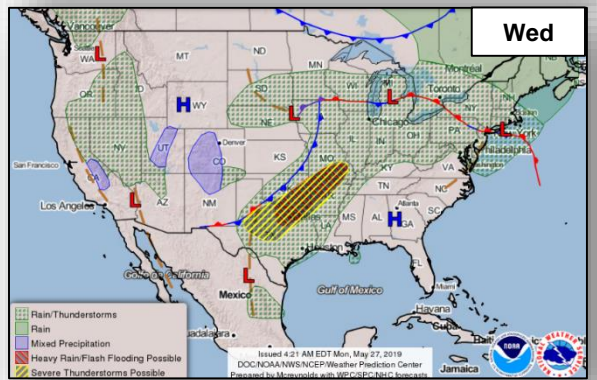
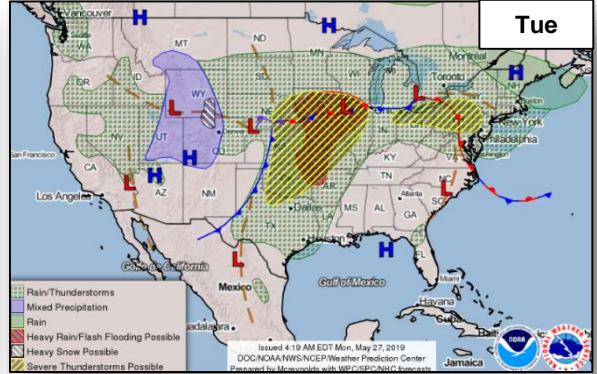
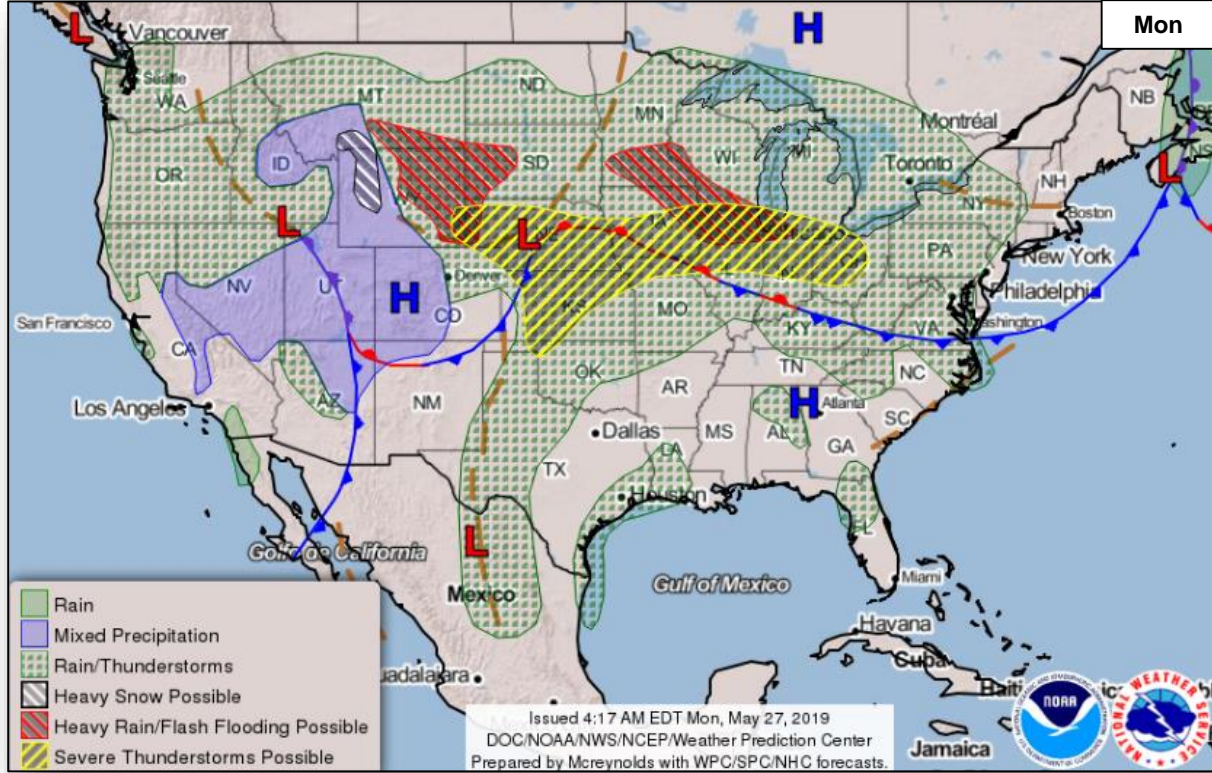
FEMA

Disturbance 1 (as of 2:00 a.m. EDT)

- Over the far eastern Pacific
- Formation chance through 48 hours: Low (10%)
- Formation chance through 5 days: Low (20%)
- No threat to U.S. interests



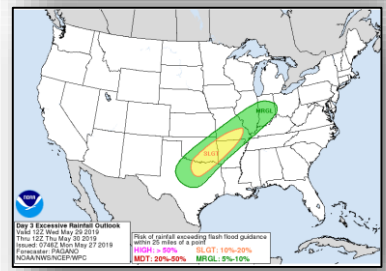
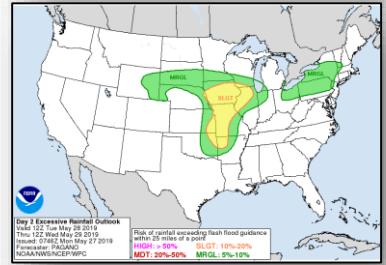
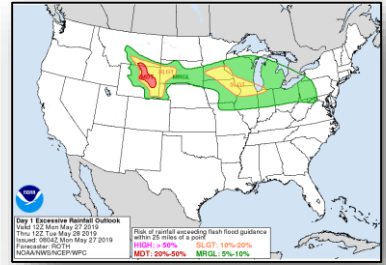
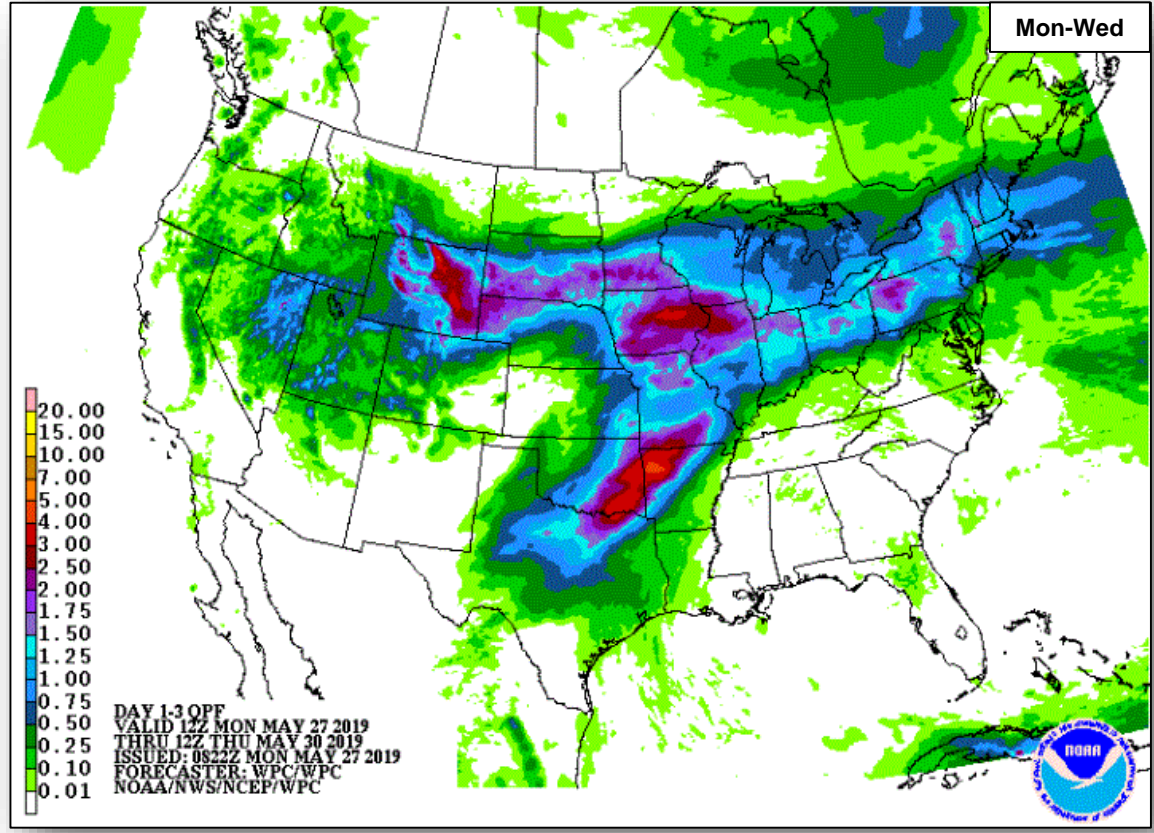
National Weather Forecast



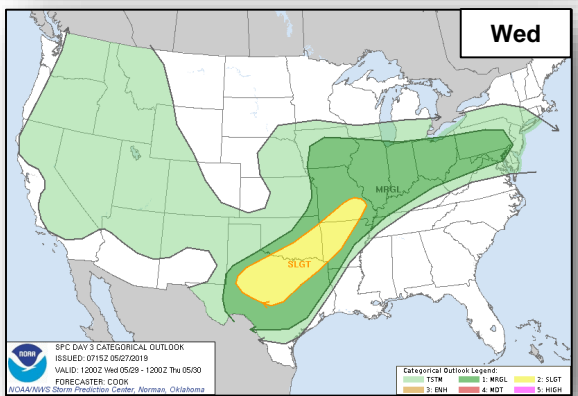
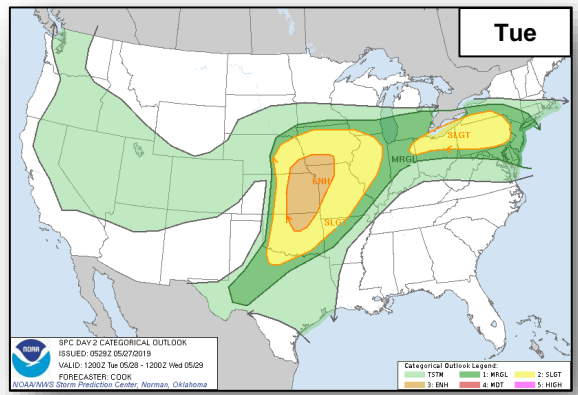
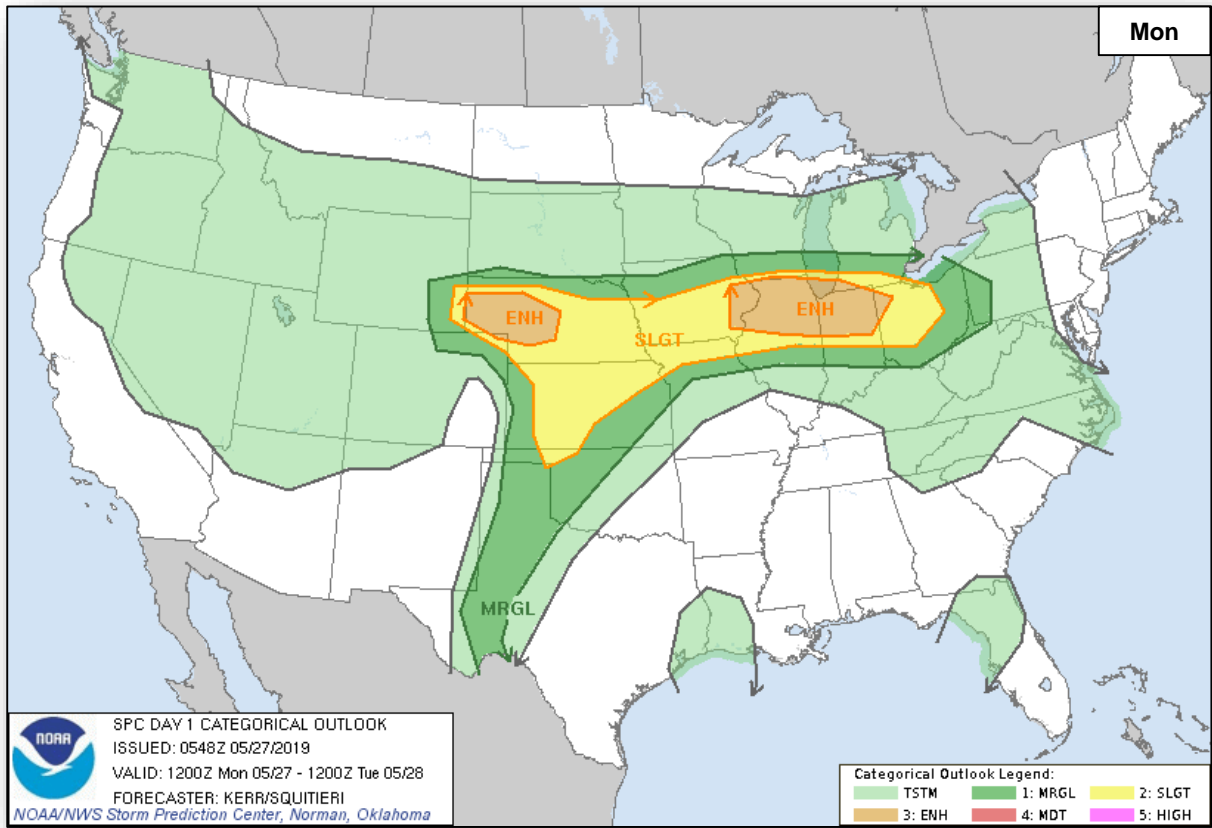
Precipitation Forecast



FEMA



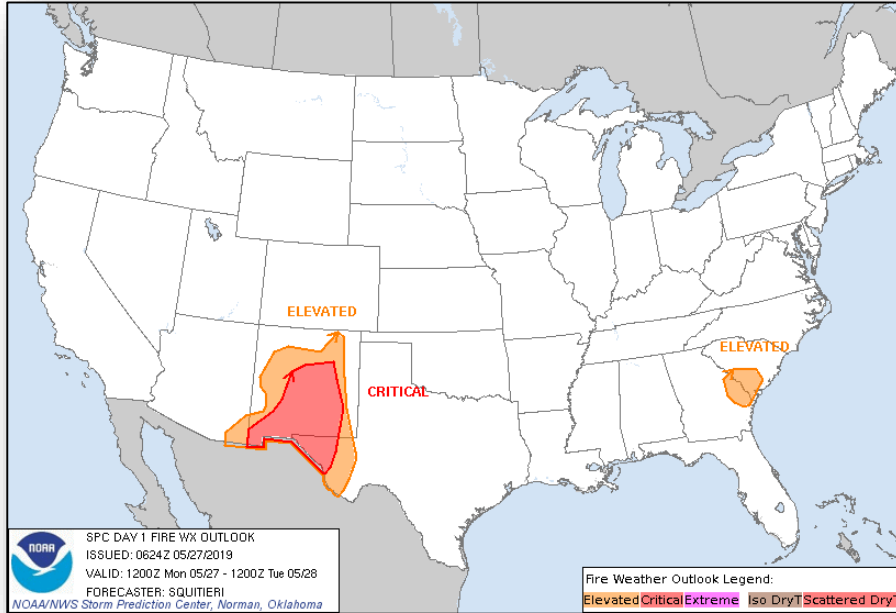
Severe Weather Outlook



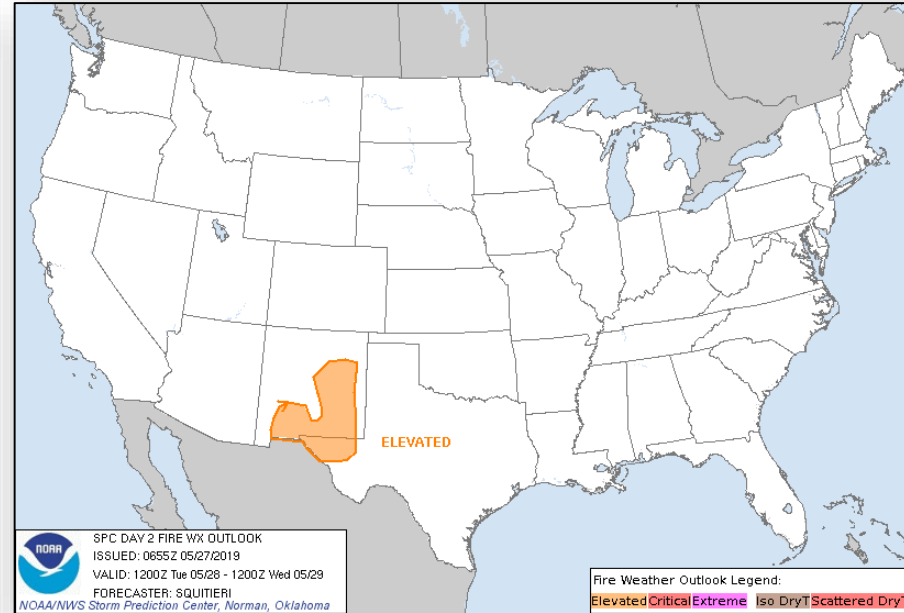
Fire Weather Outlook



FEMA



Monday

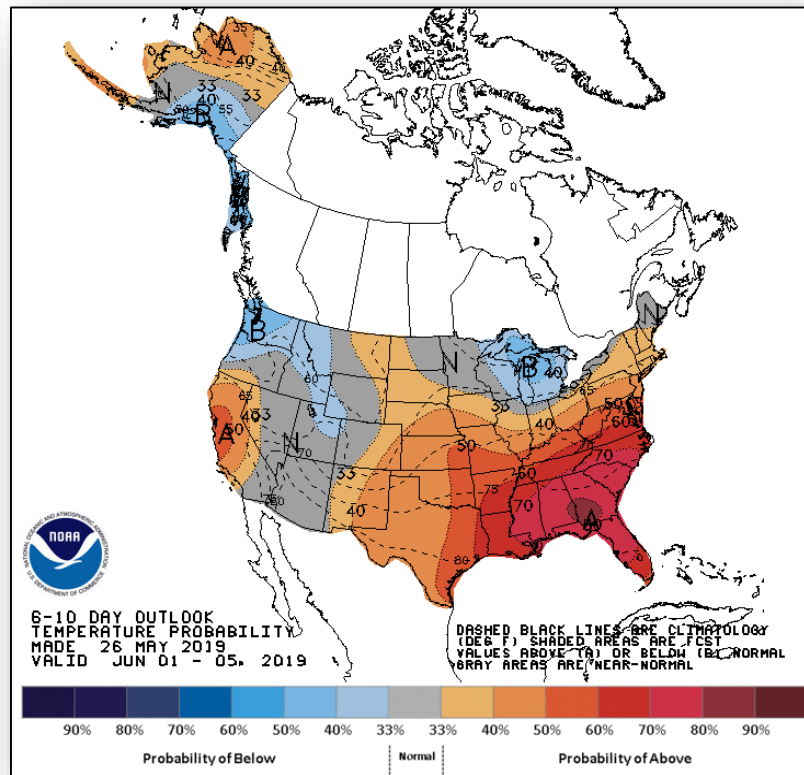


Tuesday

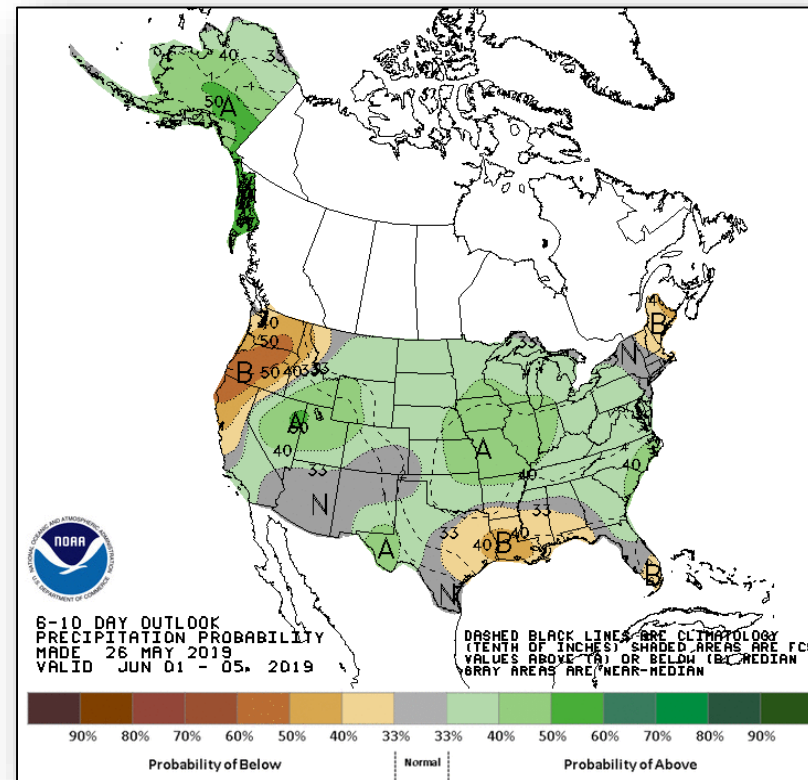
Long Range Outlooks – June 1– 5



FEMA



6 - 10 Day Temperature Probability



6 - 10 Day Precipitation Probability

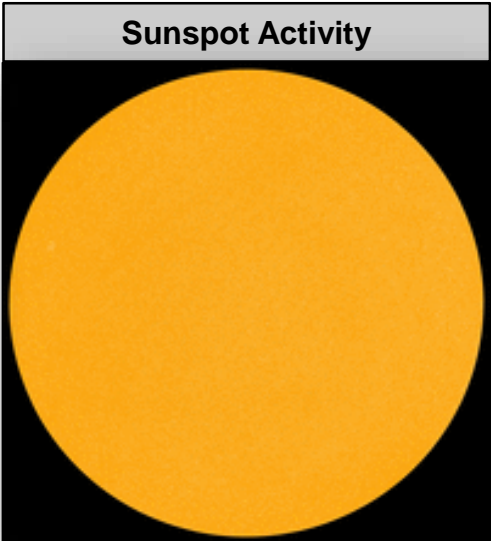
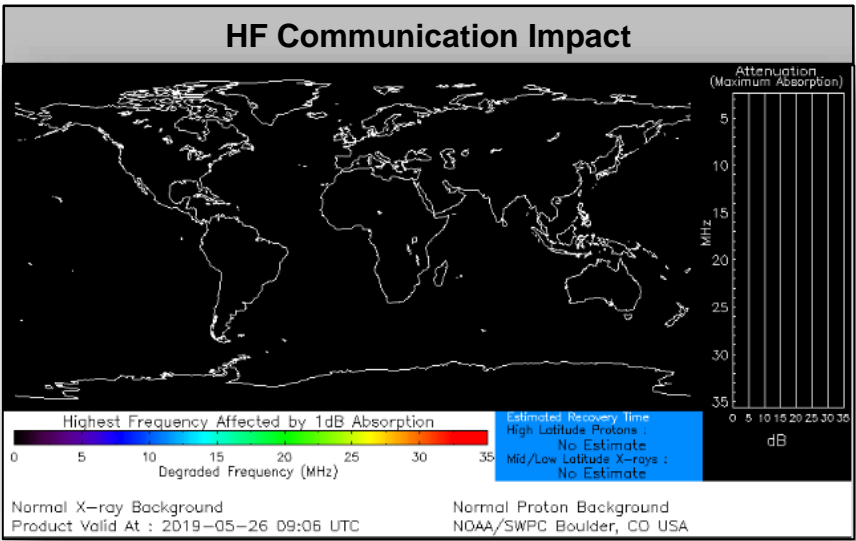
Space Weather



FEMA

	Space Weather Activity	Geomagnetic Storms	Solar Radiation	Radio Blackouts
Past 24 Hours	None	None	None	None
Next 24 Hours	None	None	None	None

For further information on NOAA Space Weather Scales refer to: <http://www.swpc.noaa.gov/noaa-scales-explanation>



Joint Preliminary Damage Assessments



FEMA

Region	State / Location	Event	IA/PA	Number of Counties		Start – End
				Requested	Complete	
IV	MS	Severe weather, tornadoes and flooding April 13-14, 2019	IA	0	0	N/A
			PA	8	4	5/21 – TBD
V	MI	Severe weather and flooding May 1-3, 2019	IA	1	0	5/28-TBD
			PA	0	0	N/A
VI	OK*	Severe weather April 30, 2019	IA	0	0	N/A
			PA	25	9	5/16 – TBD

**PDAs temporarily suspended*

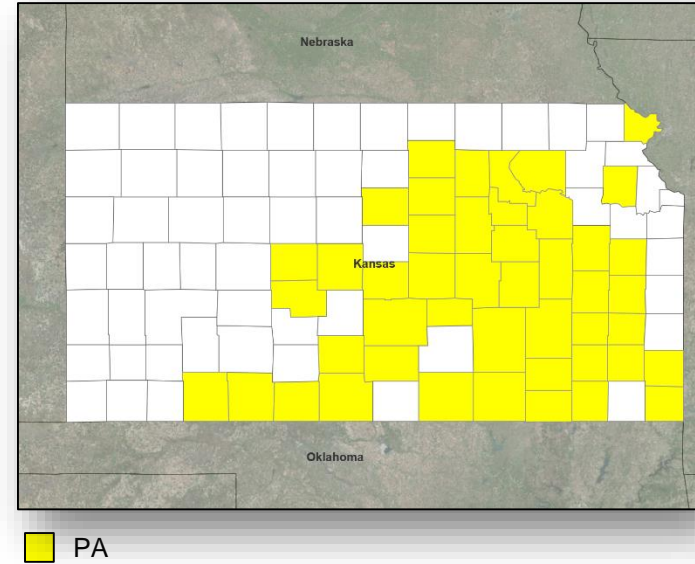
Declaration Request



FEMA

Kansas

- The Governor requested an Emergency Declaration on May 25 2019
- For severe storms, tornadoes, straight-line winds, flooding, and mudslides beginning April 28, 2019, and continuing
- Requesting Public Assistance for 46 counties



Disaster Requests & Declarations



Declaration Requests in Process					Requests APPROVED (since last report)	Requests DENIED (since last report)
6	IA	PA	HM	Date Requested	0	0
LA – DR Severe Storms and Tornadoes	X	X	X	May 21, 2019		
SD – DR Severe Winter Storm, Snowstorms, and Flooding	X	X	X	May 21, 2019		
ID – DR Severe Storms, Flooding, Landslides, and Mudslides		X	X	May 22, 2019		
ND – DR Flooding		X	X	May 24, 2019		
LA – EM Flooding		X		May 24, 2019		
KS – EM Severe storms, tornadoes, straight-line winds, flooding, and mudslides		X		May 25, 2019		

FEMA Common Operating Picture

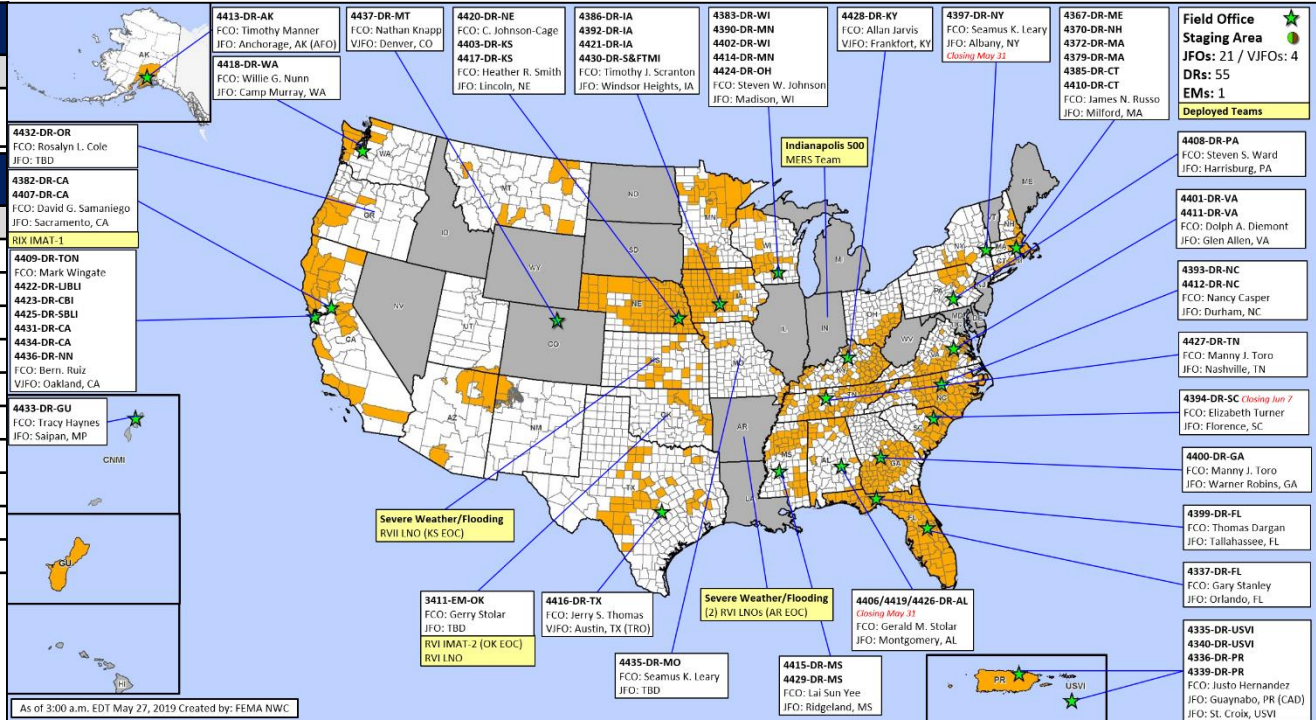


FEMA

FEMA HQ	
NWC	NRCC
Monitoring	Rostered

FEMA REGIONS		
WATCH	RRCC	
Monitoring	I	Rostered
Monitoring	II	Rostered
Monitoring	III	Rostered
Monitoring	IV	Rostered
Monitoring	V	Rostered
Monitoring	VI	Level III
Enhanced	VII	Rostered
Monitoring	VIII	Rostered
Monitoring	IX	Rostered
Monitoring	X	Rostered

Activation Details
 RVI: Severe weather (day shift)
 RVII: Severe weather



N-IMATs	
3 Teams	
East	
West	
Crisis	

R-IMATs	
>7 Teams	
I	
II	
III	
IV-1	
IV-2	
V	
VI-1	
VI-2	OK
VII	
VIII	
IX-1	CA
IX-2	
X	

FMC	PMC
NMC	Deployed

Team:	US&R	MERS	FCOs	FDRCs	IM WORKFORCE
Status	(>66%)	(>66%)	(≤1Type 1)	(=2)	
Assigned:	28	36	29	12	13,331 (NC)
Unavailable	0	0	0	0	3,878 (▼)
Deployed:	0	0	25	10	5,617 (▼)
Available:	28	36	4	2	3,836 / 29% (▼)

IM CADRE AVAILABILITY SUMMARY
Cadres with 25% or Less Availability
EHP 6% (31/493); ER 10% (6/60); FL 16% (24/152); HM 20% (223/1129); IT 24% (160/658); LOG 22% (291/1325); OPS 21% (54/263); PA 8% (186/2456); PLAN 14% (56/387); SAF 11% (6/53); SEC 17% (21/125)

As of 3:00 a.m. EDT May 27, 2019 Created by: FEMA NWC



FEMA

FEMA's mission is helping people before, during, and after disasters.

Click [here](#) to subscribe to this briefing.