

FEMA National Watch Center

# Daily Operations Briefing

Wednesday, December 21, 2022

8:30 a.m. ET



**FEMA**

# National Current Ops / Monitoring

---

## New Significant Incidents / Ongoing Ops

- Earthquake – Ferndale, CA - Final
- Winter Weather/Equipment Support – Tribal Areas, SD

## Hazard Monitoring

- Powerful Winter Storms– Northern Rockies to Upper Midwest
- Bitter Cold/Life Threatening Wind Chill – Northern Plains
- Freezing Rain – Southern Appalachians

---

## Disaster Declaration Activity

- No new declaration activity

## Event Monitoring

- No significant events



**FEMA**

# M6.4 Earthquake – Ferndale, CA - FINAL

**Situation:** At 5:35 a.m. ET a magnitude 6.4 (MMI VII) earthquake occurred 7.7 miles west-southwest of Ferndale (Humboldt County), CA at a depth of 10 miles with multiple aftershocks. 7 Tribal Nations were affected.

## Lifeline Impacts:

**Safety and Security:** (FEMA Region IX SPOTREP #3 2:00 a.m. ET)

- Significant structural damage with 27 unsafe residences

**Food, Water, and Shelter:** (FEMA Region IX SPOTREP #3 2:00 a.m. ET)

- 1 American Red Cross shelter established in Fortuna, CA
- City of Del Rio water system offline, boil water advisory issued for City of Del Rio and Fortuna

**Health and Medical:** (FEMA Region IX SPOTREP #3 2:00 a.m. ET)

- 3 Hospitals and 1 Medical Center on emergency power, no fuel supply issues
- 11 injuries confirmed, 2 previously reported deaths were determined to not have the earthquake as a contributing factor

## Energy:

- 14,526 (25%) customers without power in Humboldt County down from a high of nearly 71K (DOE Eagle-I as of 6:30 am ET)
- Pacific Gas and Electric (PG&E) actively working to restore services (FEMA Region IX SPOTREP #3 2:00 a.m. ET)

## Communications:

- 5 AT&T cell sites offline, numerous AT&T and Verizon sites on backup power; Cell on Wheels requested
- No 9-1-1 outages have occurred

**Transportation:** (FEMA Region IX SPOTREP #3 2:00 a.m. ET)

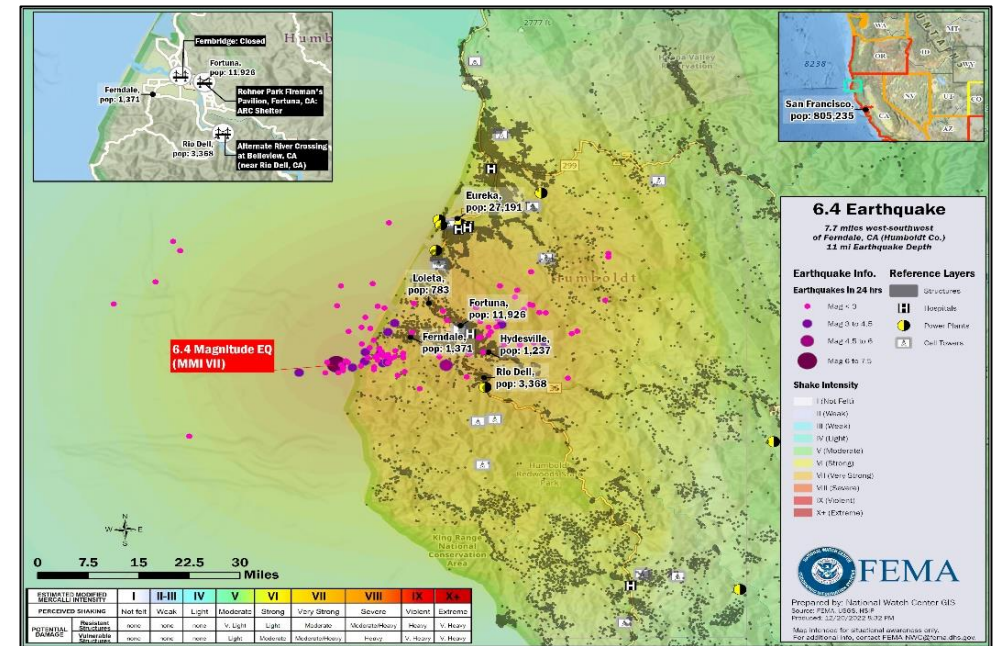
- Route 211 at Fernbridge closed, alternate routes available

**State / Local Response:** (FEMA Region IX SPOTREP #3 2:00 a.m. ET)

- CalOES EOC at Full Activation (COVID-19/ Seismic Activity); Governor declared a State of Emergency for Humboldt County
- Humboldt County EOC at Partial Activation; Local Emergency declared

**FEMA Response:** (FEMA Region IX SPOTREP #3 2:00 a.m. ET)

- Region IX Watch continuing to monitor, LNOs deployed to CalOES
- NWC is monitoring



FEMA

# Winter Weather/Equipment Support, Tribal Areas, SD

**Situation:** The Oglala Sioux Tribe and the Rosebud Sioux Tribe requested generator support for upcoming impacts from the Artic Blast. Heating resources are currently running low, and individuals are struggling with propane and wood shortages.

**Lifeline Impacts:** (Region 8 SPOTREP as of 9:00 p.m. ET)

## Food, Water, and Shelter:

- Shelters / Occupants: 2 American Red Cross shelters established in Mission, SD
- Oglala Sioux Tribe: Food and water supply is adequate
- Rosebud Sioux Tribe: Food boxes on hand but issue with moving them from Tribe to home, Water supply adequate

## Health and Medical:

- Fatalities / Injuries: Rosebud Sioux Tribe reported 5 fatalities

## Energy:

- Rosebud Sioux Tribe: Requesting 1 generator for shelter and 20 for individuals
- Oglala Sioux Tribe: Requesting 2 generators for shelters and 6 for individuals

## Transportation:

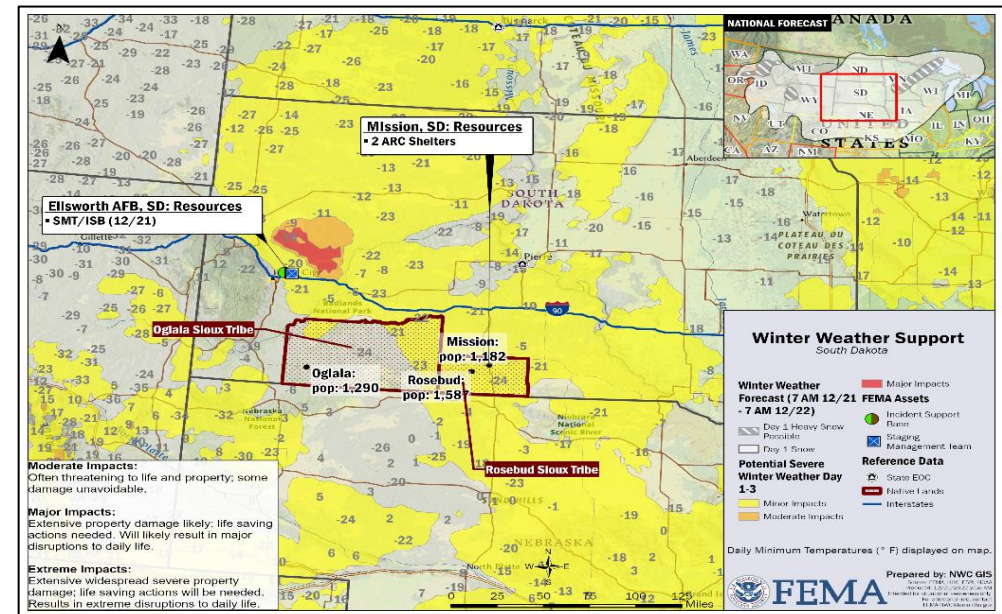
- Roads & Rail: Main transportation routes are passable. Local roads are still challenged with drifts

## State / Local Response:

- South Dakota is at Normal Operations
- Tribal Emergency Managers deployed
- DCO/E in coordination with the South Dakota National Guard

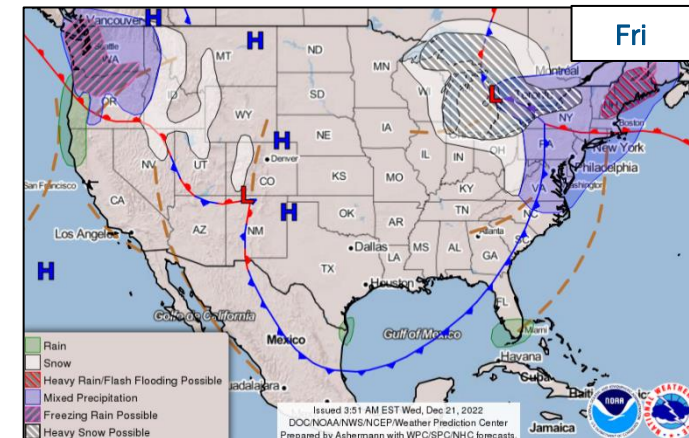
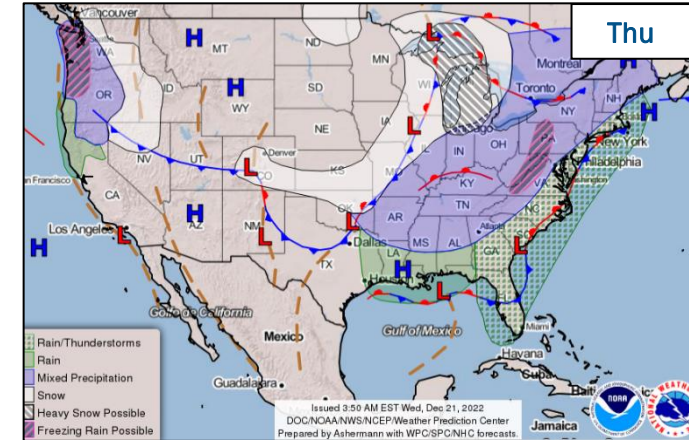
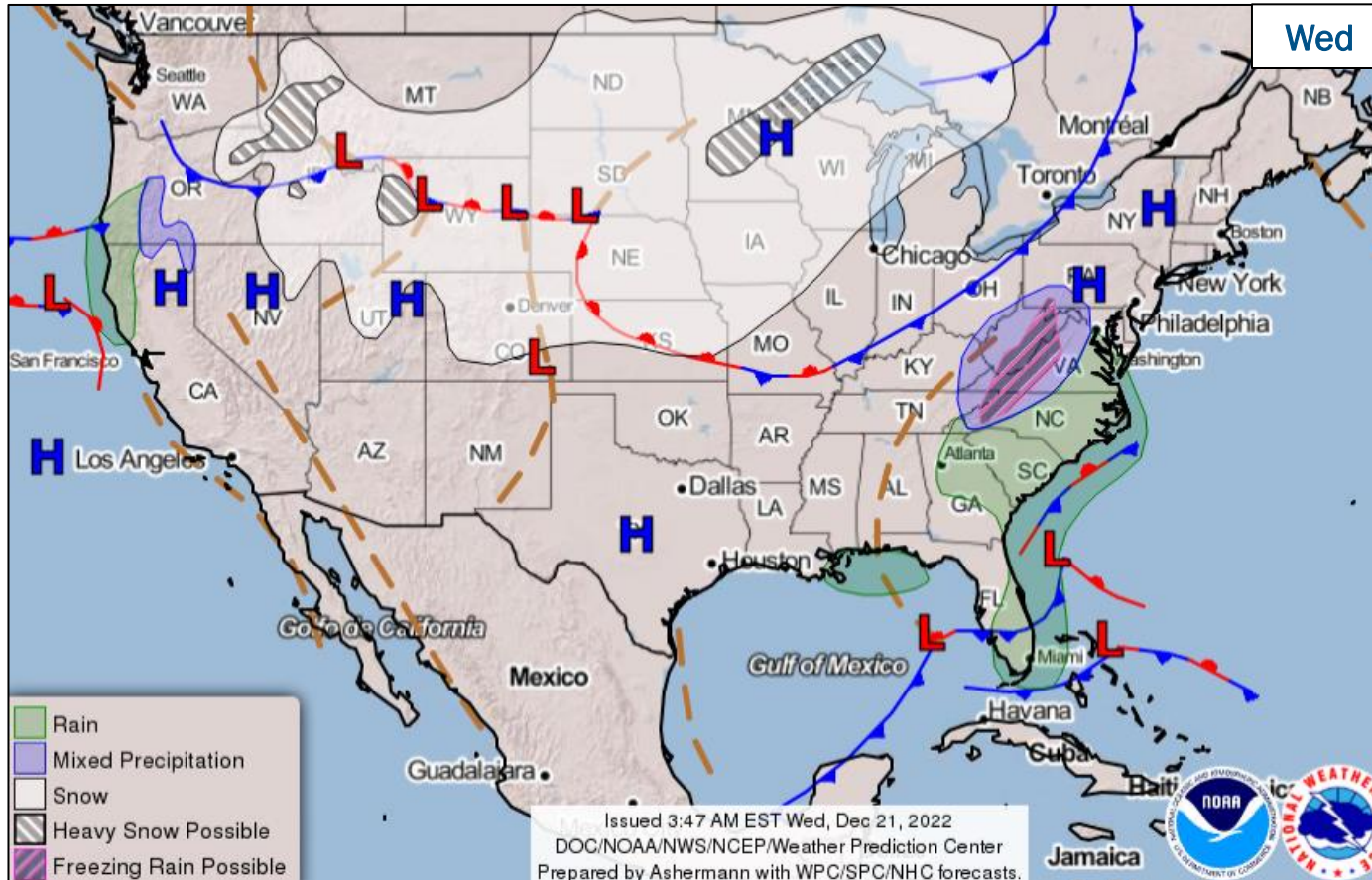
## FEMA Response:

- Region VIII RRC C is at Level 3
- Region VIII/Denver MOC and NWC is monitoring



FEMA

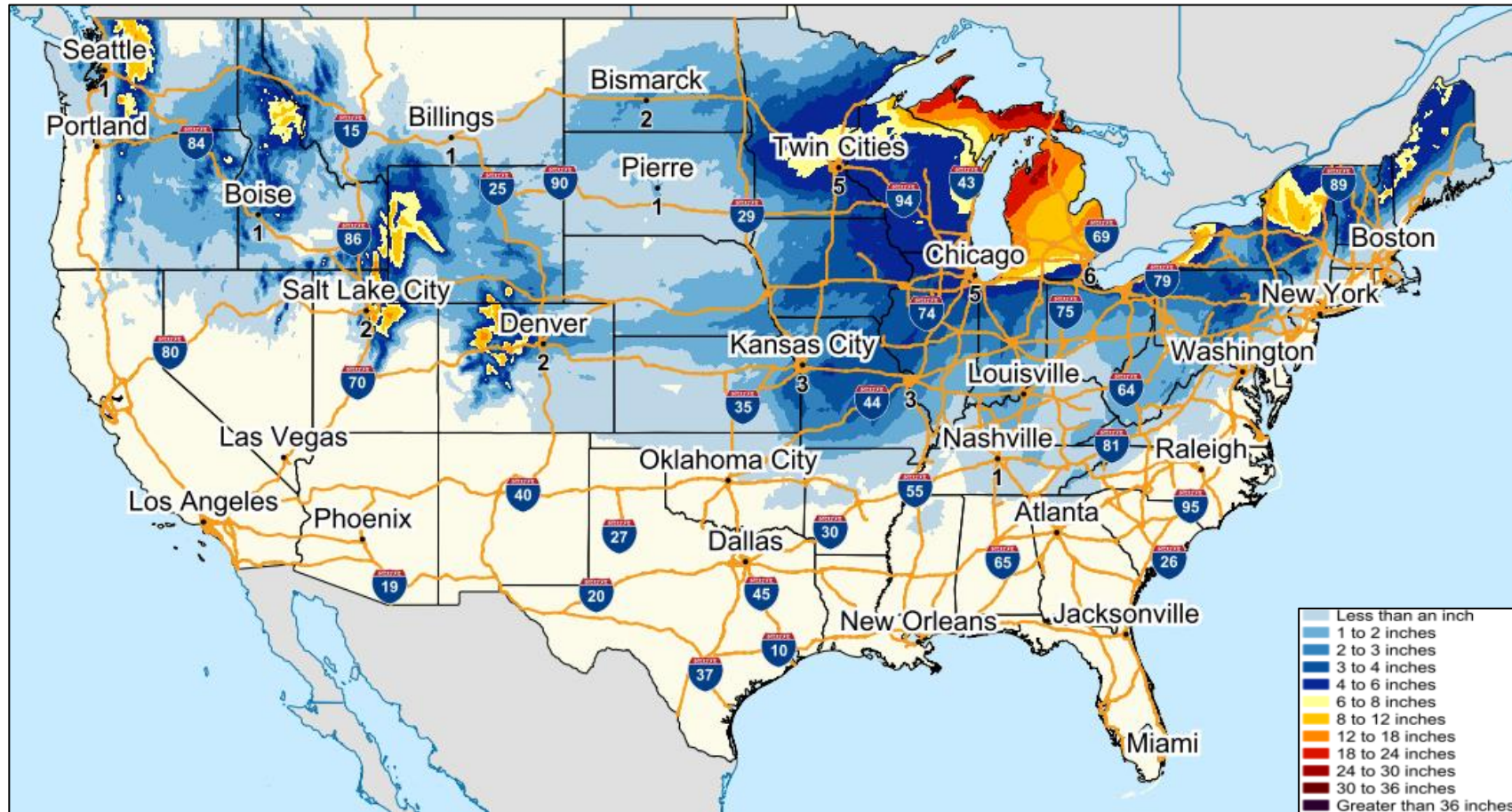
# National Weather Forecast



FEMA

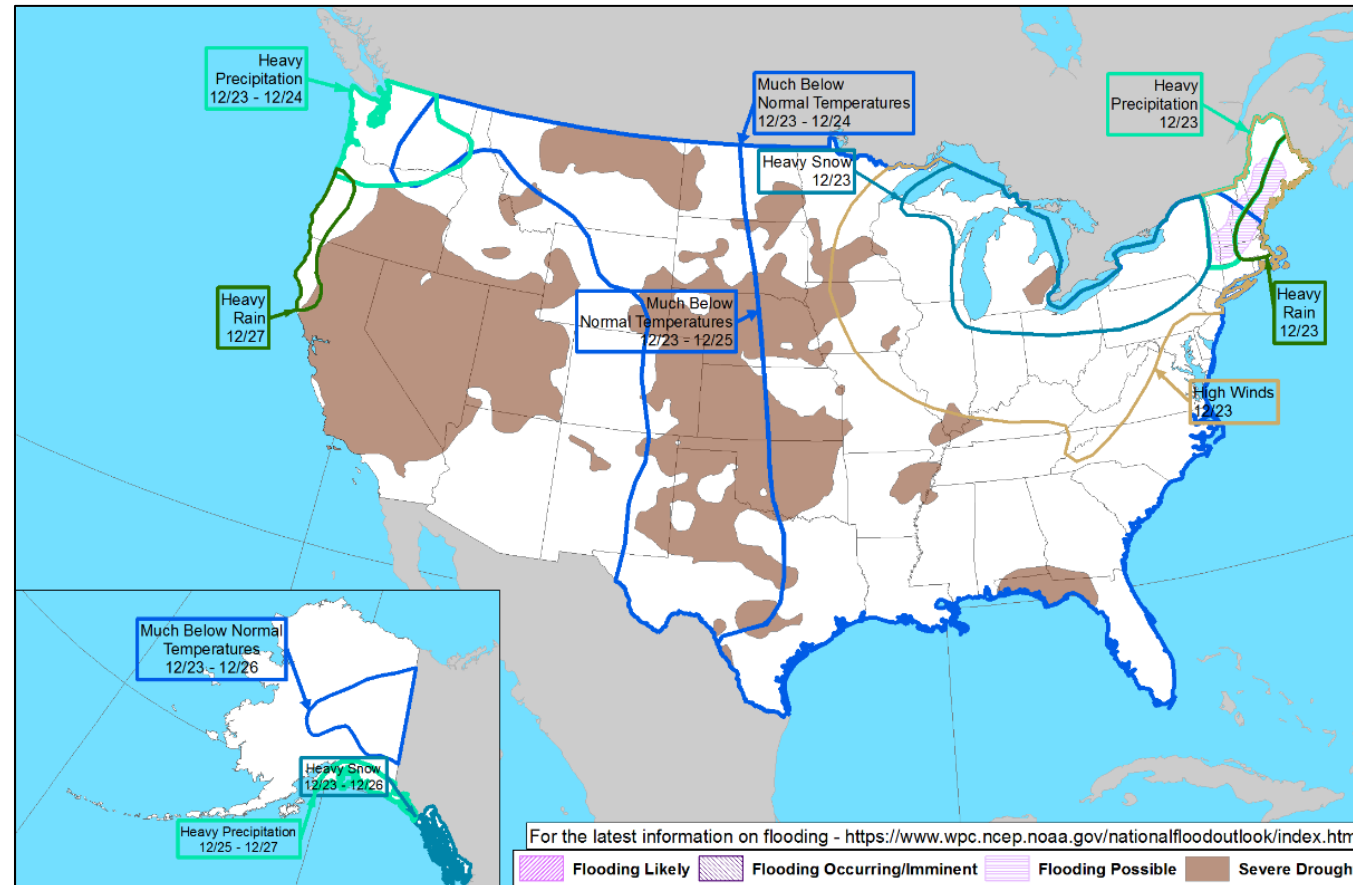
National Watch Center

# Forecast Snowfall



FEMA

# Hazards Outlook – Dec 23-27



FEMA

# FEMA Common Operating Picture

**15**  
Joint Field  
Offices

**9**  
Virtual Joint  
Field Offices

**54**  
Major  
Disasters

**11**  
Emergency  
Declarations

Wednesday  
December 21, 2022  
8:30 a.m. ET

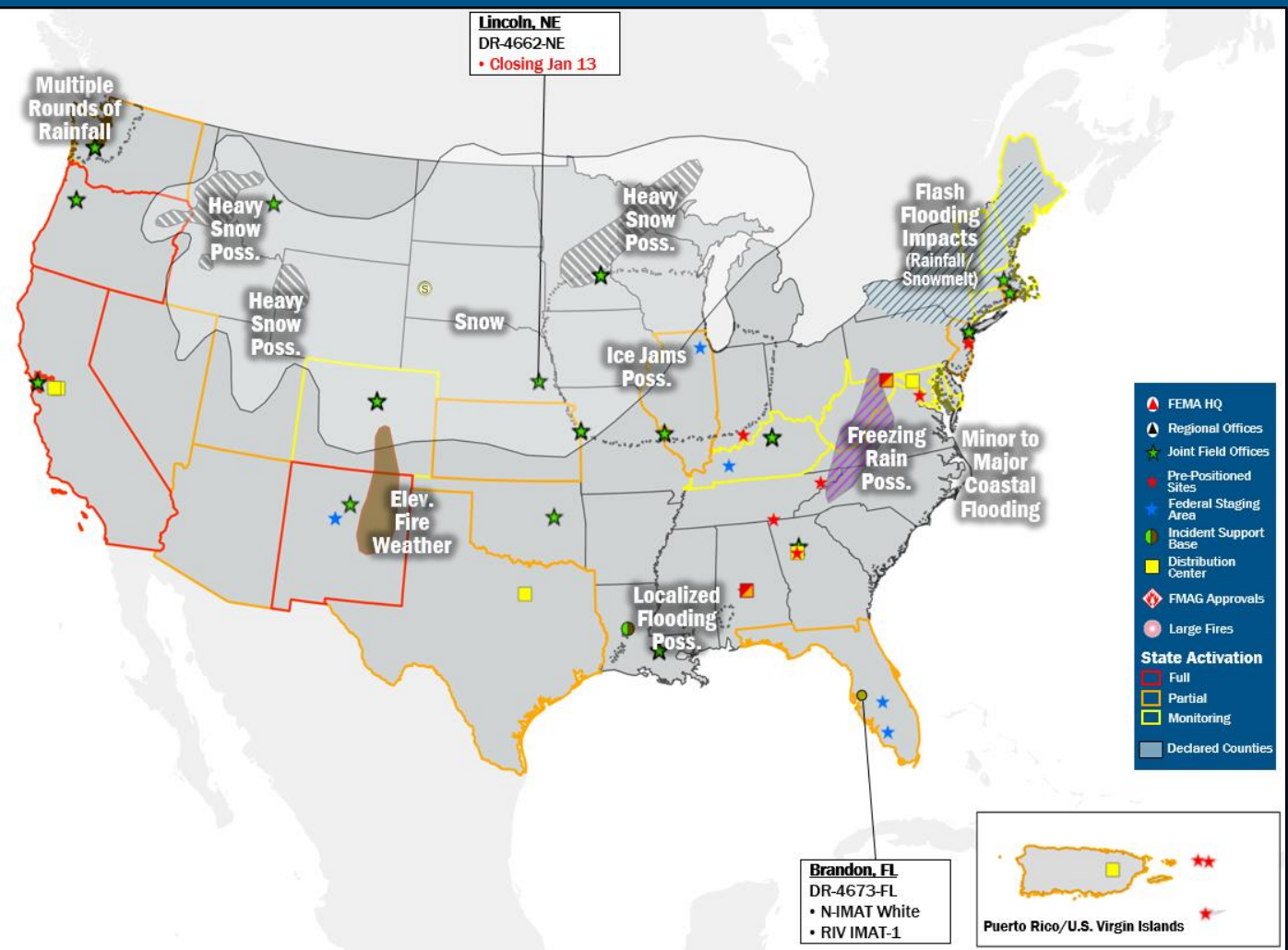
FEMA HQ	
NWC	NRCC
Monitoring	Rostered
FEMA REGIONS	
Watch	RRCC
Monitoring	I Rostered
Monitoring	II Rostered
Monitoring	III Rostered
Monitoring	IV Rostered
Monitoring	V Rostered
Monitoring	VI Rostered
Monitoring	VII Rostered
Monitoring	VIII Level 3
Monitoring	IX Rostered
Monitoring	X Rostered
Notes:	
RWCs/RRCCs: RVIII RWC: Winter Storm	STATE EDCs: NI: TC Ida, Monkeypox CO: N/A; Avian Influenza PR: TC Fiona FL: TC Ian KY/NM: Flooding IL: SW Border Bus Reception and Coordination AZ/CO/NM: Wildfires TX: Ongoing Operations KS: All Hazards CA/AS: Seismic Activity HI: Severe Weather OR: RSV & Influenza Surge WA: European Green Crabs/Flu & RSV Season
Surge Capacity Force	
Rostered 7,692	Deployed 0

N-IMATs 2-4 Teams Available	
Red	
White	FL
Blue	
Gold	
R-IMATs ≥ 7 Teams Available	
I	
II	
III	Personnel
IV-1	FL
IV-2	
V	1
VI-1	Personnel
VI-2	2
VII	
VIII	
IX-1	Personnel
IX-2	
X	Personnel

REGIONAL BREAKDOWN			
	JFO/VJFO	DR	EM
I	2/0	5	0
II	2/3	5	4
III	0/0	3	0
IV	2/1	8	4
V	2/0	4	0
VI	2/1	3	3
VII	2/1	4	0
VIII	1/1	4	0
IX	0/1	6	0
X	2/1	12	0



**Anchorage, AK**  
DR-4638-AK  
• Closing Dec 23



- FEMA HQ
- Regional Offices
- Joint Field Offices
- Pre-Positioned Sites
- Federal Staging Area
- Incident Support Base
- Distribution Center
- FMAG Approvals
- Large Fires
- State Activation
  - Full
  - Partial
  - Monitoring
- Declared Counties



**Brandon, FL**  
DR-4673-FL  
• N-IMAT White  
• RIV IMAT-1

## IM Workforce

13,362 (+2) Assigned  
4,282 (+16) Unavailable  
5,183 (-17) Deployed

---

29% / 3,897 (+3) Available

## IM Cadre Availability ≤ 25% Availability

Disability Integration: 13% (8/64); External Affairs: 24% (117/486); Environmental Planning and Historic Preservation: 20% (169/838); Field Leadership: 17% (25/143); Hazard Mitigation: 18% (222/1,239); Interagency Recovery Coordination: 25% (76/299); Operations: 17% (65/373); Public Assistance: 17% (381/2,230); Planning: 14% (69/477); Safety: 20% (15/74)

## MERS

≥ 66%

36 Assigned  
0 Unavailable  
0 Deployed

---

36 Available

## US&R

≥ 66%

28 Assigned  
2 Unavailable  
0 Deployed

---

26 Available

## FCO

≤ 1 Type I

51 Assigned  
3 Unavailable  
40 (-1) (27 FCOR) Deployed

---

8 (+1) Available



# Joint Preliminary Damage Assessments

Region	State / Location	Incident	IA	Number of Counties		Start - End
			PA	Requested	Complete	
VI	OK	Severe Storms, Tornadoes, and Floods Nov 4 and continuing	IA	0	0	N/A
			PA	4	0	11/18 - TBD
VIII	ND	Winter Storm Nov 9-11, 2022	IA	0	0	N/A
			PA	10	0	12/21 - TBD



FEMA

# Declaration Requests in Process – 5

State / Tribe / Territory – Incident Description	Type	IA	PA	HM	Requested
OR – Wildfires and Straight-line Winds	EM		X		Sep 9
GA – Flooding	DR	X			Oct 4
UT – Severe Storms and Flooding	DR		X	X	Oct 19
CA – Heat Dome and Wildfires	DR	X	X	X	Oct 26
Havasupai Tribe – Flooding	DR		X	X	Nov 30



**FEMA**



# FEMA

Helping people before, during, and after disasters.



*Scan to subscribe to this briefing.*