

FEMA National Watch Center

Daily Operations Briefing

Saturday, November 27, 2021

8:30 a.m. ET



FEMA

National Current Ops / Monitoring

New Significant Incidents / Ongoing Ops

- None

Hazard Monitoring

- Heavy Rain – Pacific Northwest
- Freezing Rain – Upper Mississippi Valley & Great Lakes
- Heavy Snow – Northeast

Disaster Declaration Activity

- None

Event Monitoring

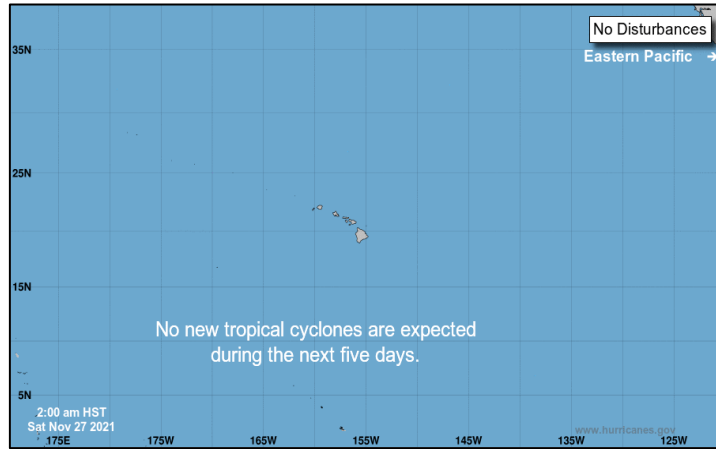
- None



FEMA

Tropical Outlook – Five Day

Central Pacific



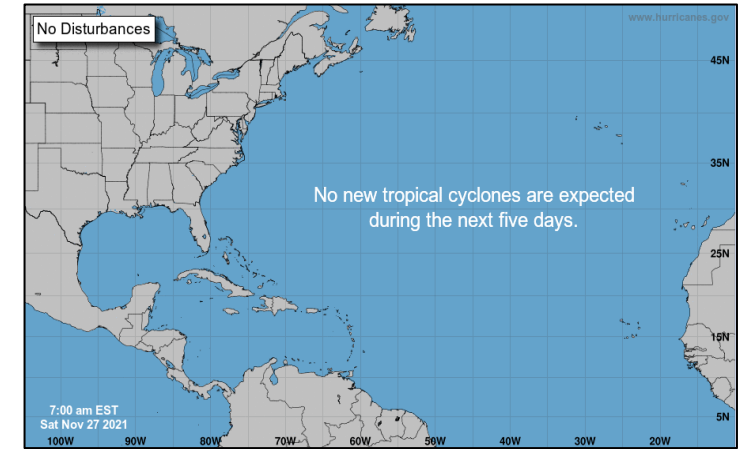
- No significant activity

Eastern Pacific



- No significant activity

Atlantic

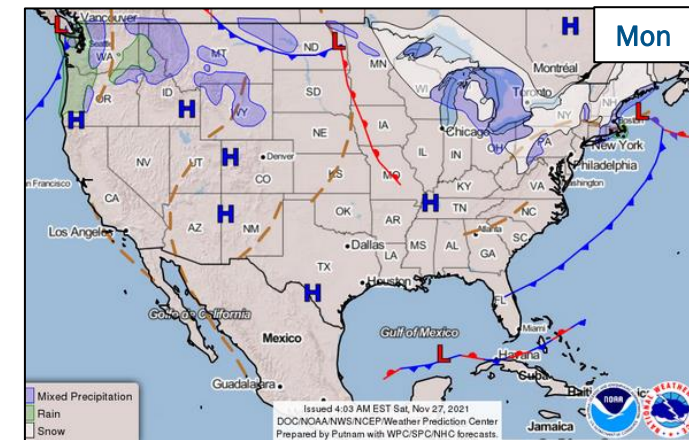
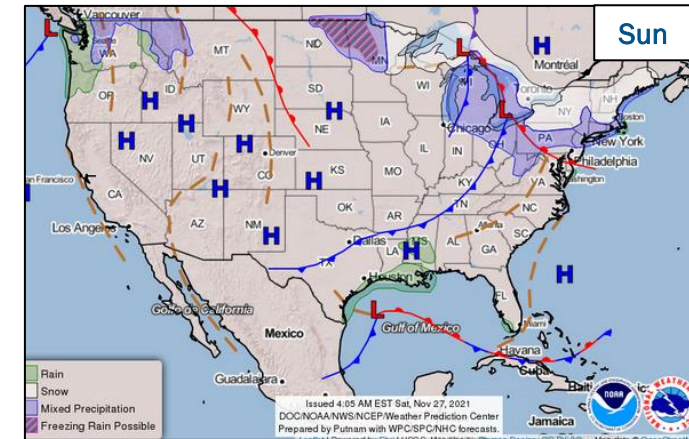
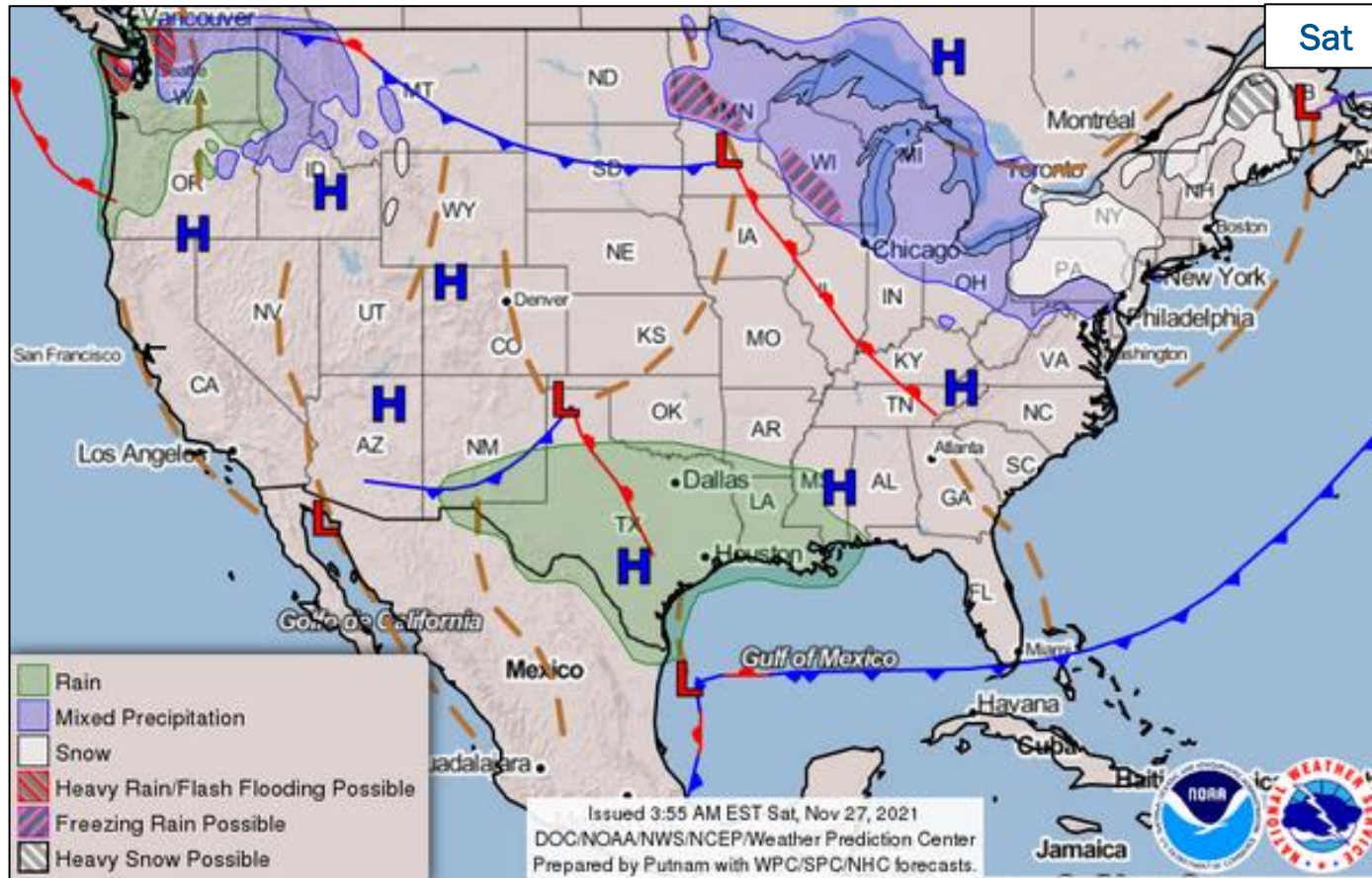


- No significant activity



FEMA

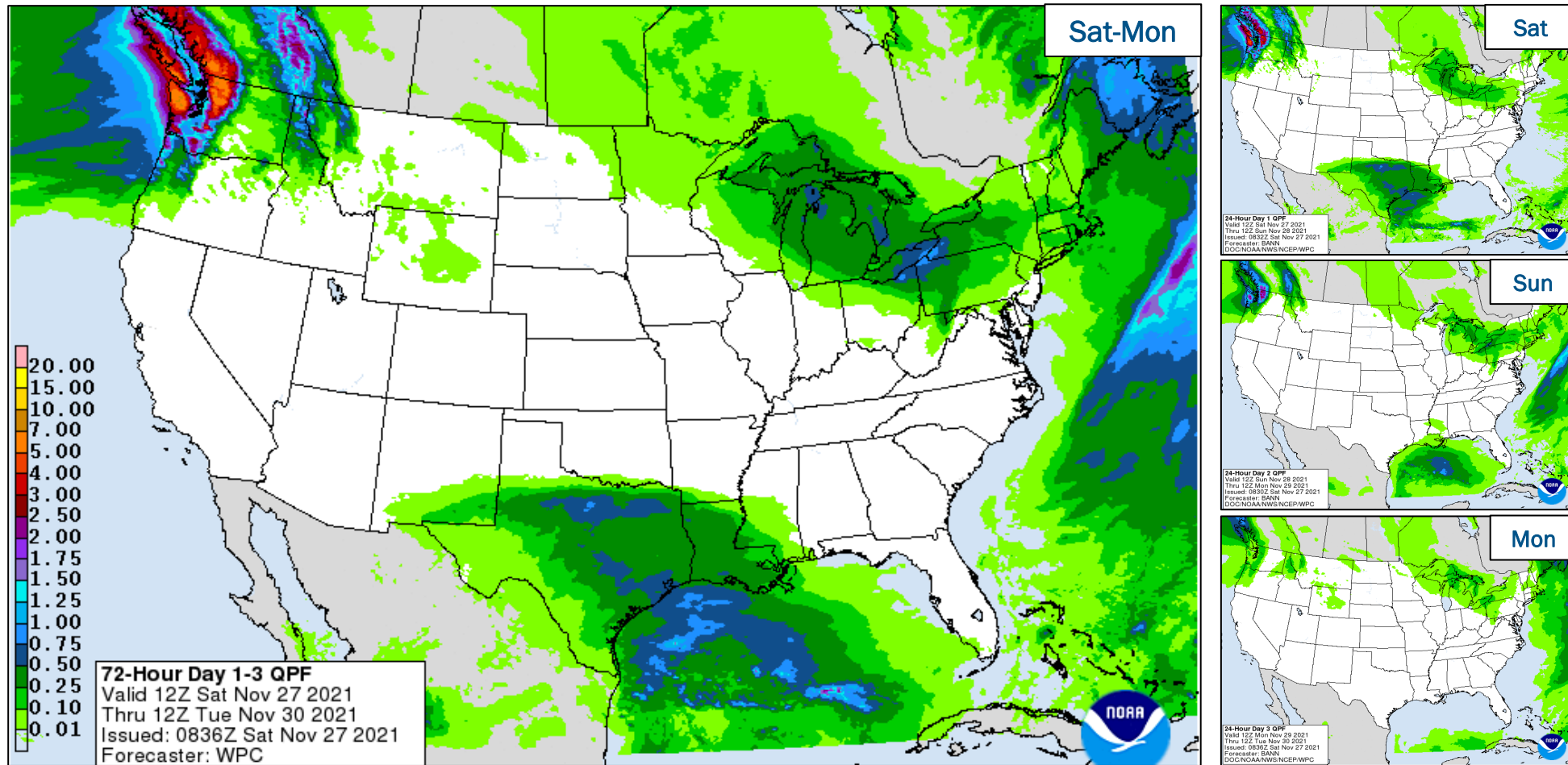
National Weather Forecast



FEMA

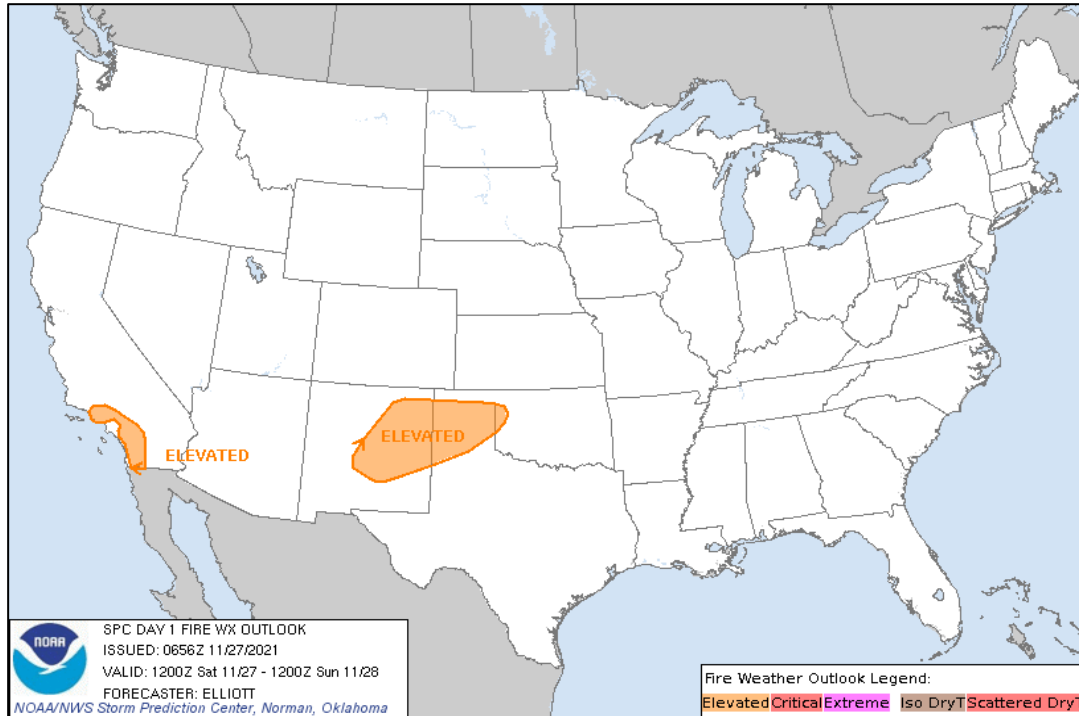
National Watch Center

Precipitation Forecast

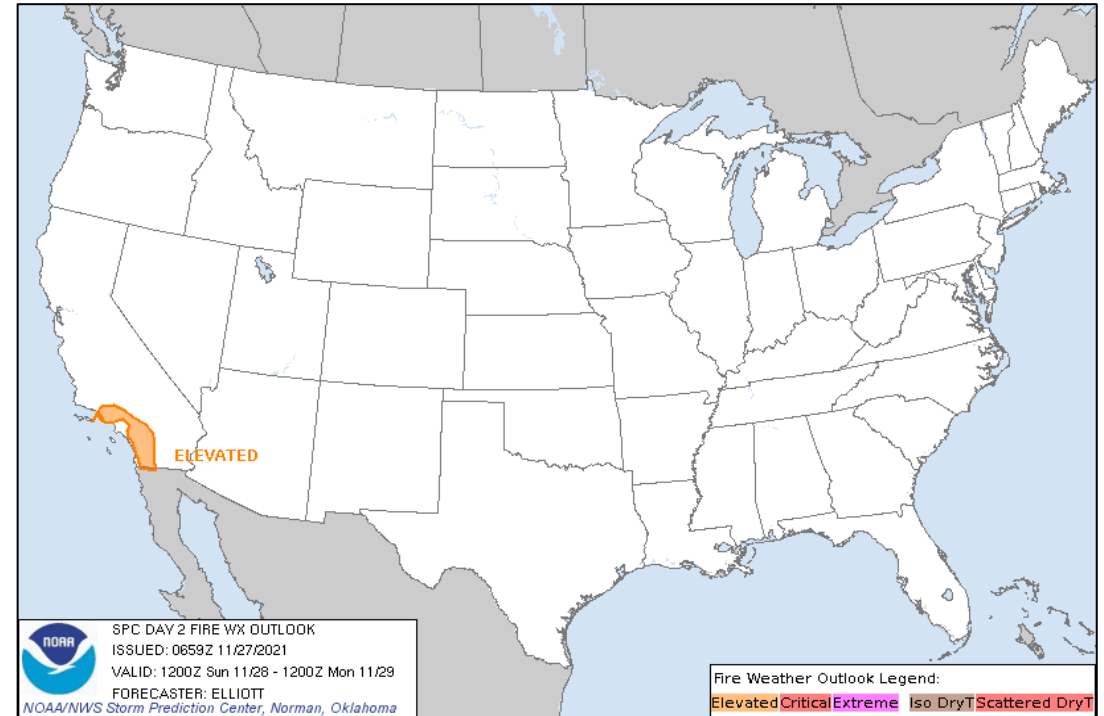


FEMA

Fire Weather Outlook



Today



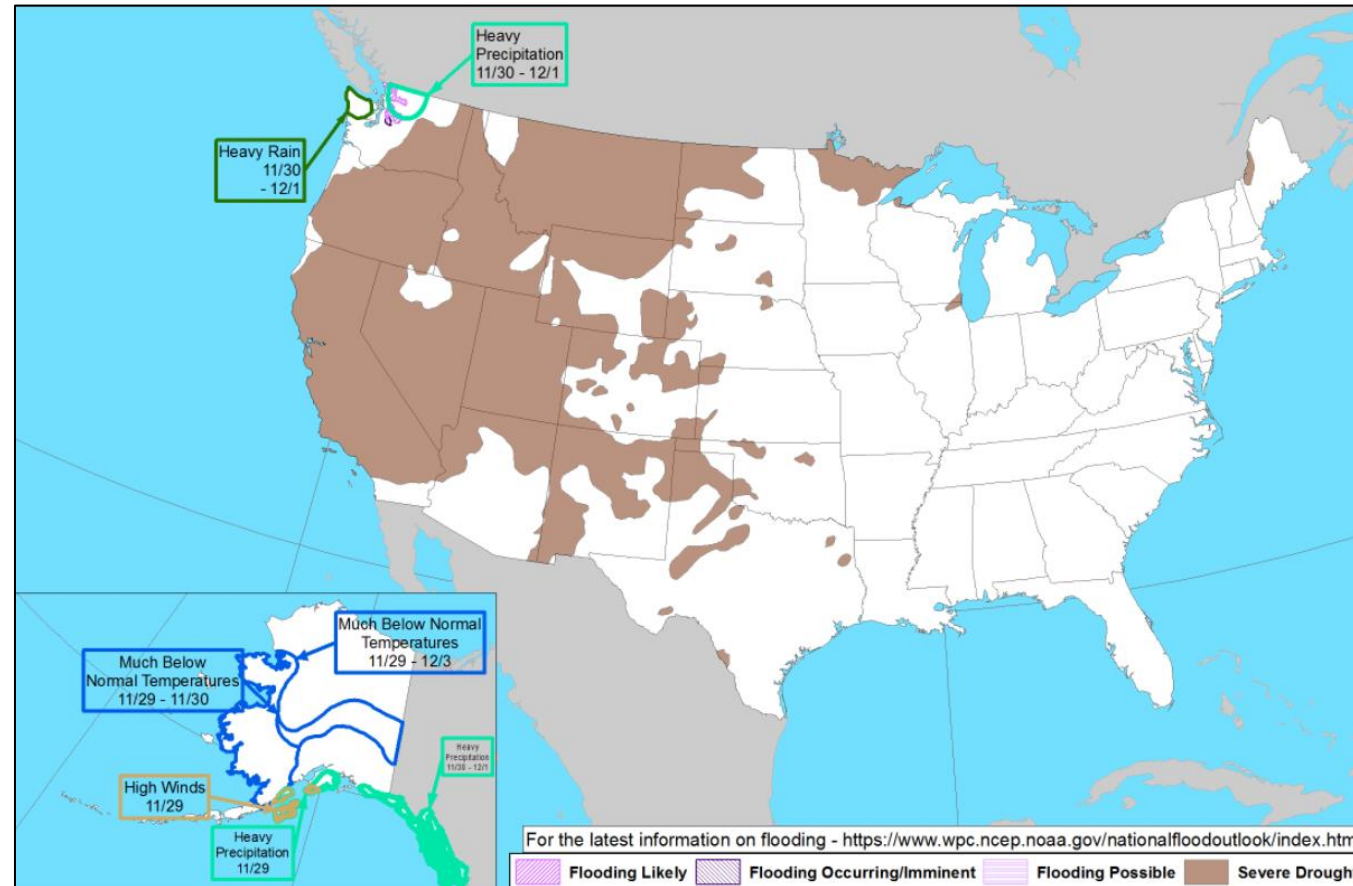
Tomorrow



FEMA

National Watch Center

Hazards Outlook – Nov 29 - Dec 3



FEMA

Joint Preliminary Damage Assessments

Region	State / Location	Incident	IA	Number of Counties		Start - End
			PA	Requested	Complete	
I	ME	Coastal Storm Oct 30-31	IA	0	0	N/A
			PA	4	0	11/8 - TBD



FEMA

Declaration Requests in Process – 2

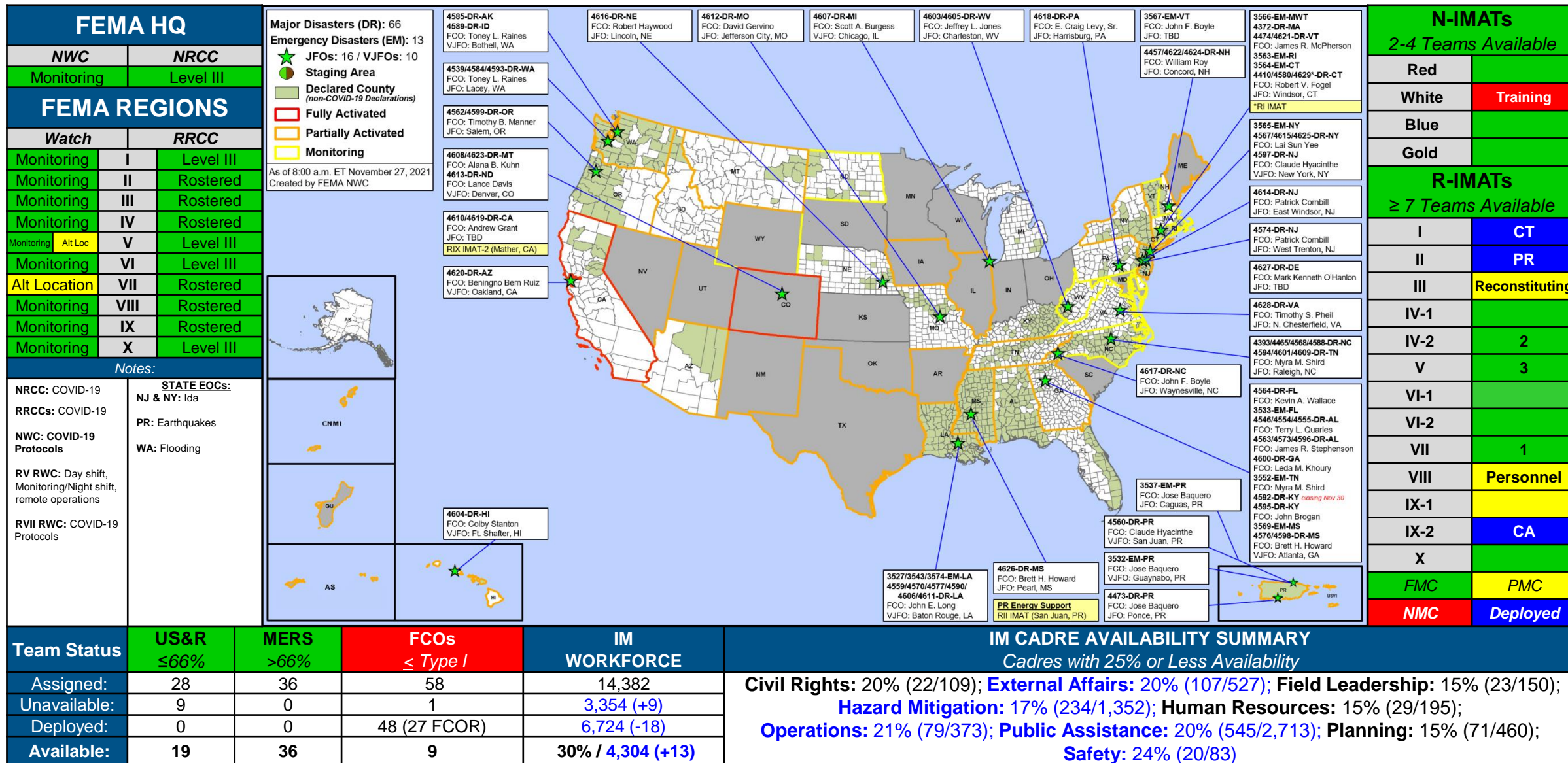
State / Tribe / Territory – Incident Description	Type	IA	PA	HM	Requested
CTCR* – Drought, Fire, and Straight-Line Winds	DR		X	X	Nov 15
AL – Flooding	DR	X		X	Nov 19

* Confederated Tribes of the Colville Reservation



FEMA

FEMA Common Operating Picture



Team Status	US&R ≤66%	MERS >66%	FCOs ≤ Type I	IM WORKFORCE	IM CADRE AVAILABILITY SUMMARY <i>Cadres with 25% or Less Availability</i>
Assigned:	28	36	58	14,382	Civil Rights: 20% (22/109); External Affairs: 20% (107/527); Field Leadership: 15% (23/150); Hazard Mitigation: 17% (234/1,352); Human Resources: 15% (29/195); Operations: 21% (79/373); Public Assistance: 20% (545/2,713); Planning: 15% (71/460); Safety: 24% (20/83)
Unavailable:	9	0	1	3,354 (+9)	
Deployed:	0	0	48 (27 FCOR)	6,724 (-18)	
Available:	19	36	9	30% / 4,304 (+13)	



FEMA

Helping people before, during, and after disasters.



Scan to subscribe to this briefing.