

FEMA National Watch Center

Daily Operations Briefing

Saturday, November 8, 2025

8:30 a.m. ET



FEMA

National Current Operations / Monitoring

New Significant Incidents / Ongoing Operations

- No new significant incidents / operations

Hazard Monitoring

- Heavy Snow – Upper Great Lakes
- Elevated Fire Weather – Central Plains

Disaster Declaration Activity

- No new declaration activity

Event Monitoring

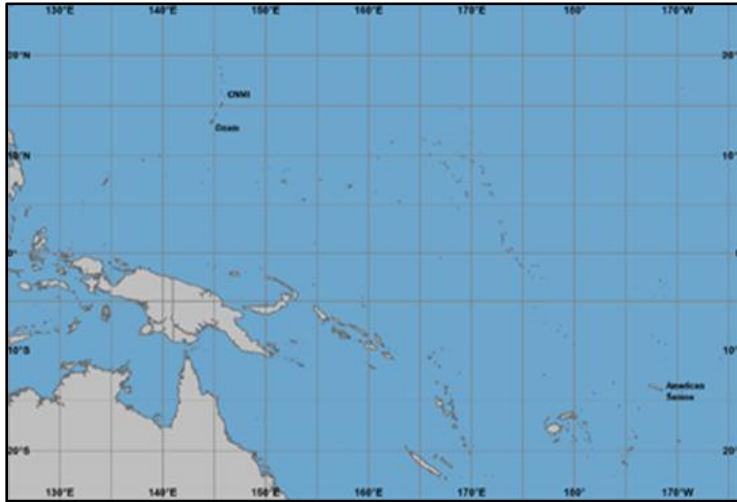
- No new significant events



FEMA

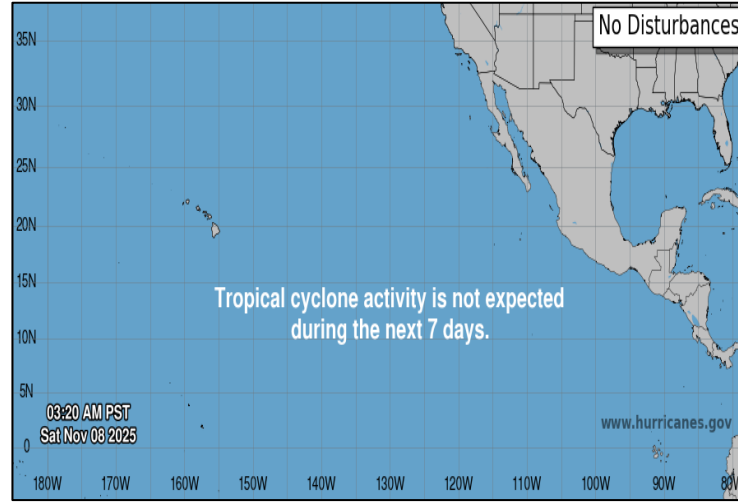
Tropical Outlook

Western Pacific



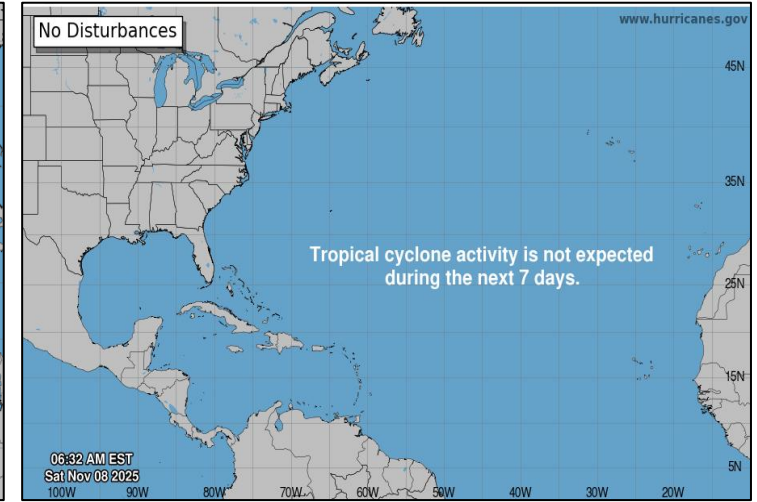
- No tropical cyclones threatening U.S. territories

Central and Eastern Pacific



- No tropical cyclones expected during the next 7 days

Atlantic

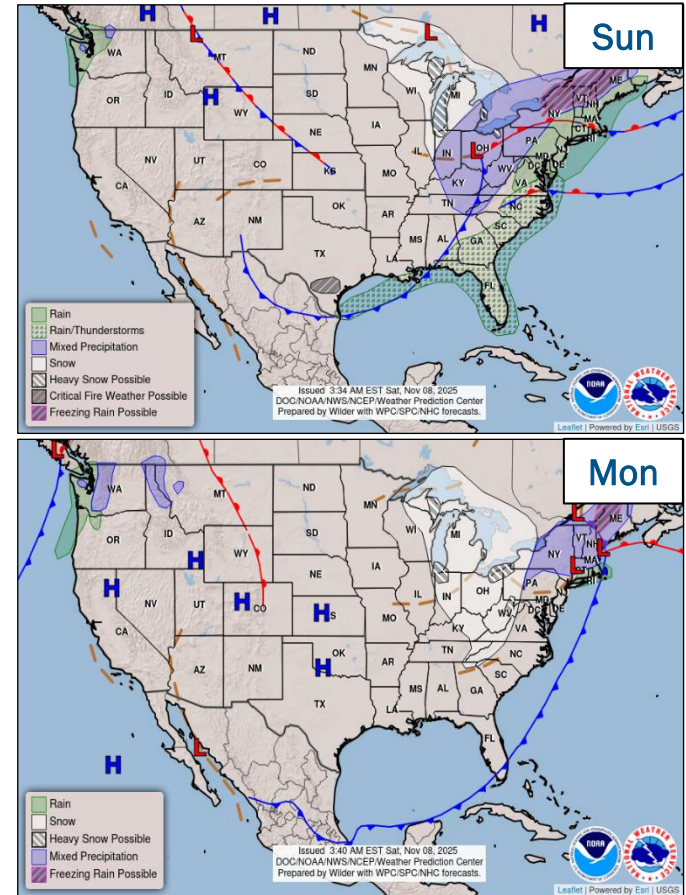
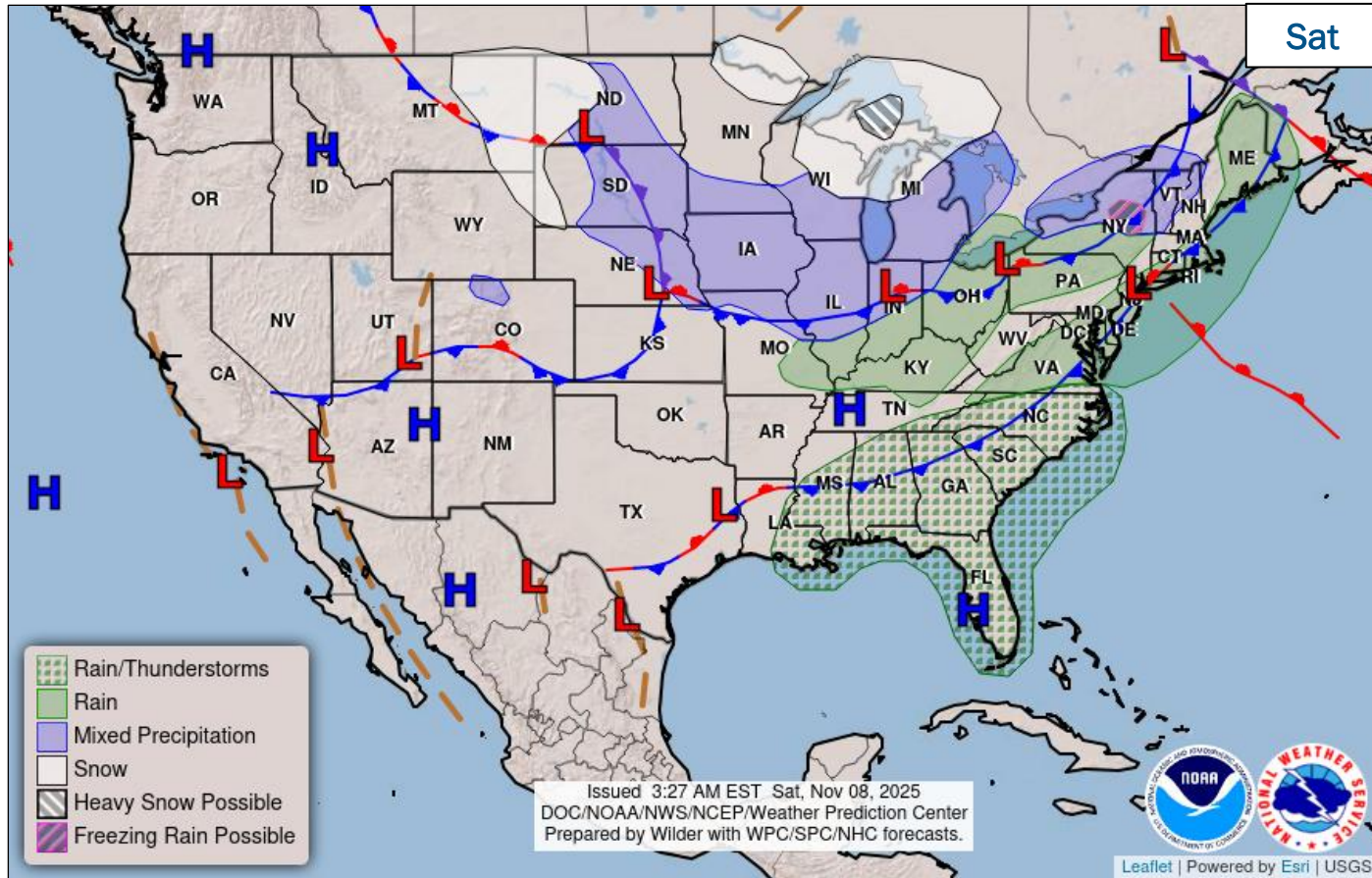


- No tropical cyclones expected during the next 7 days



FEMA

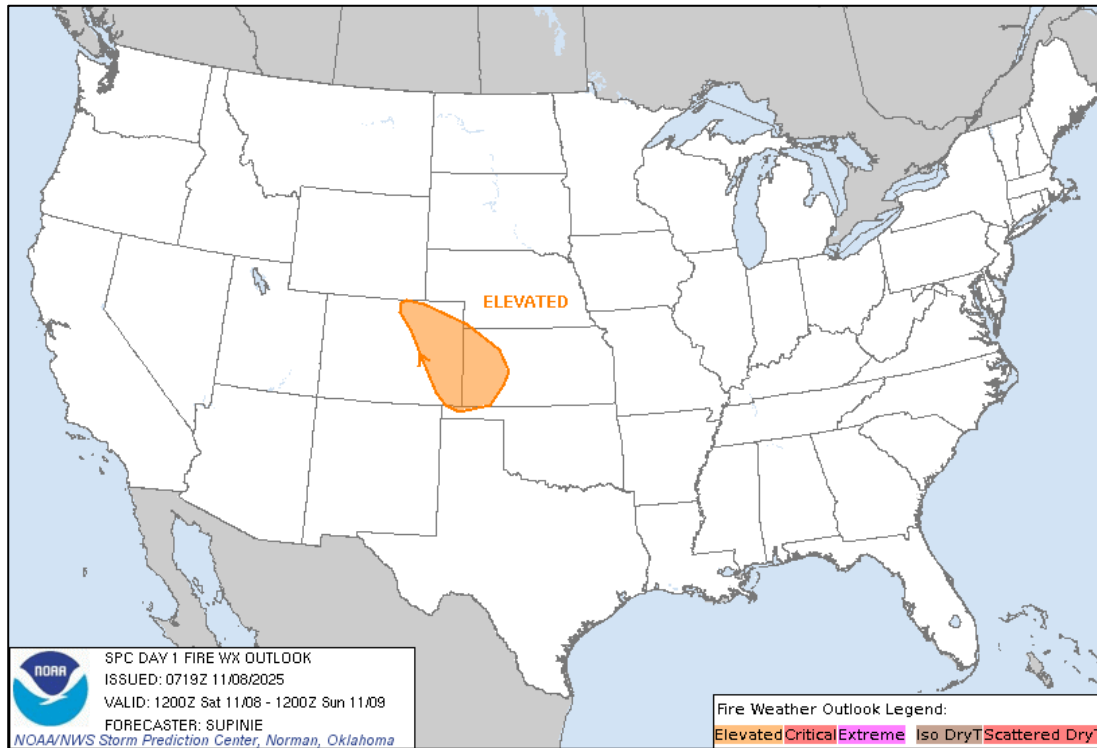
National Weather Forecast



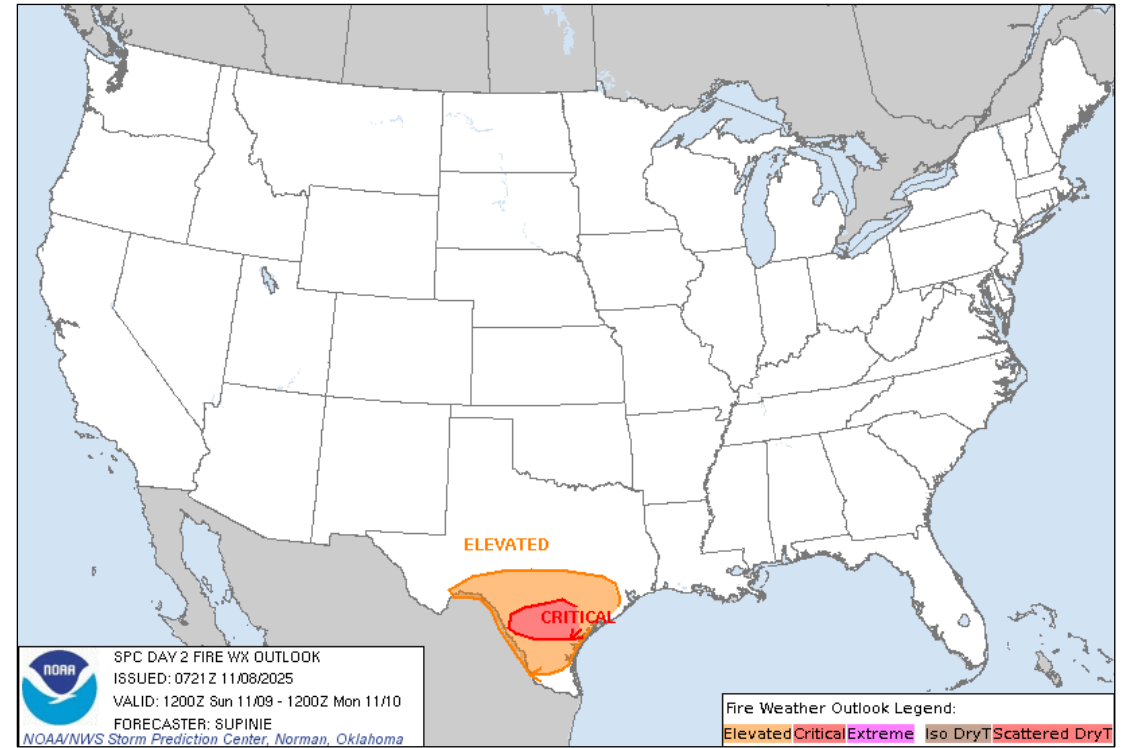
FEMA

National Watch Center

Fire Weather Outlook



Today



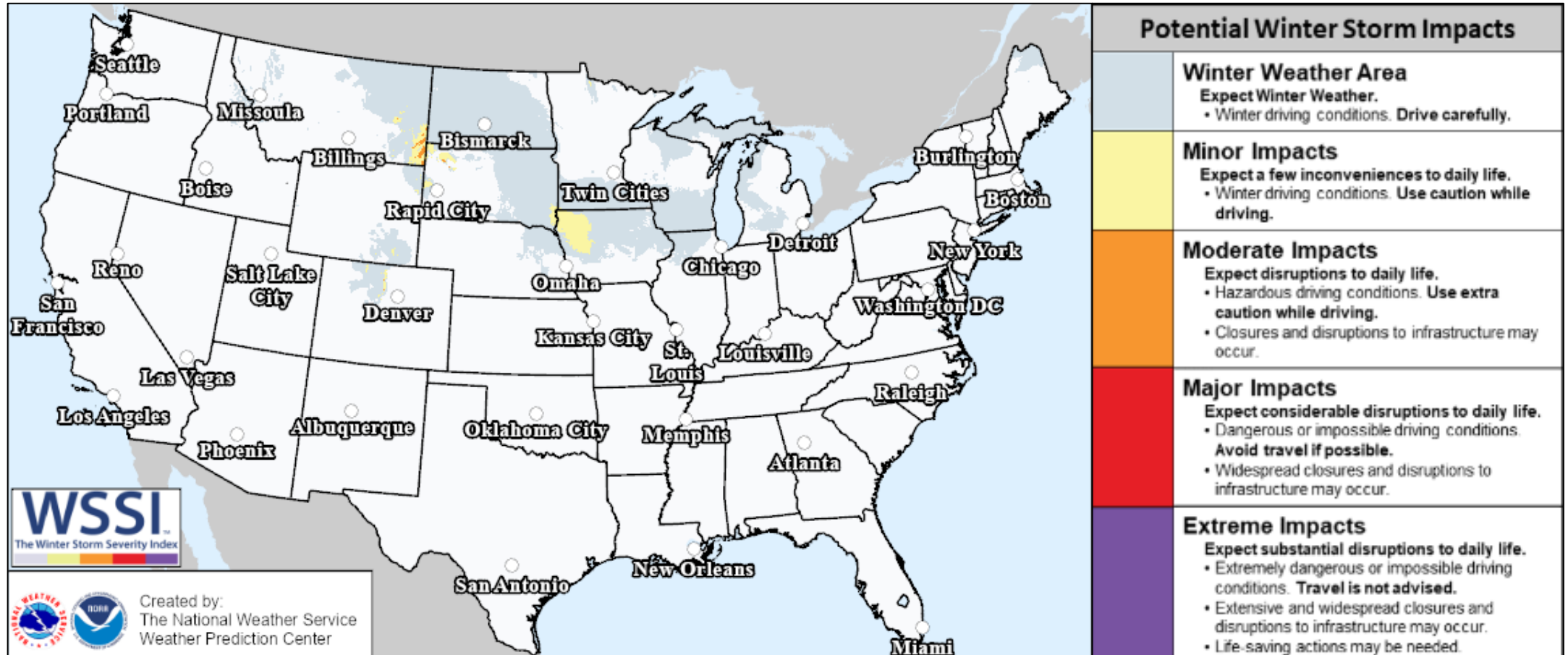
Tomorrow



FEMA

National Watch Center

Snowfall Forecast Impacts



FEMA

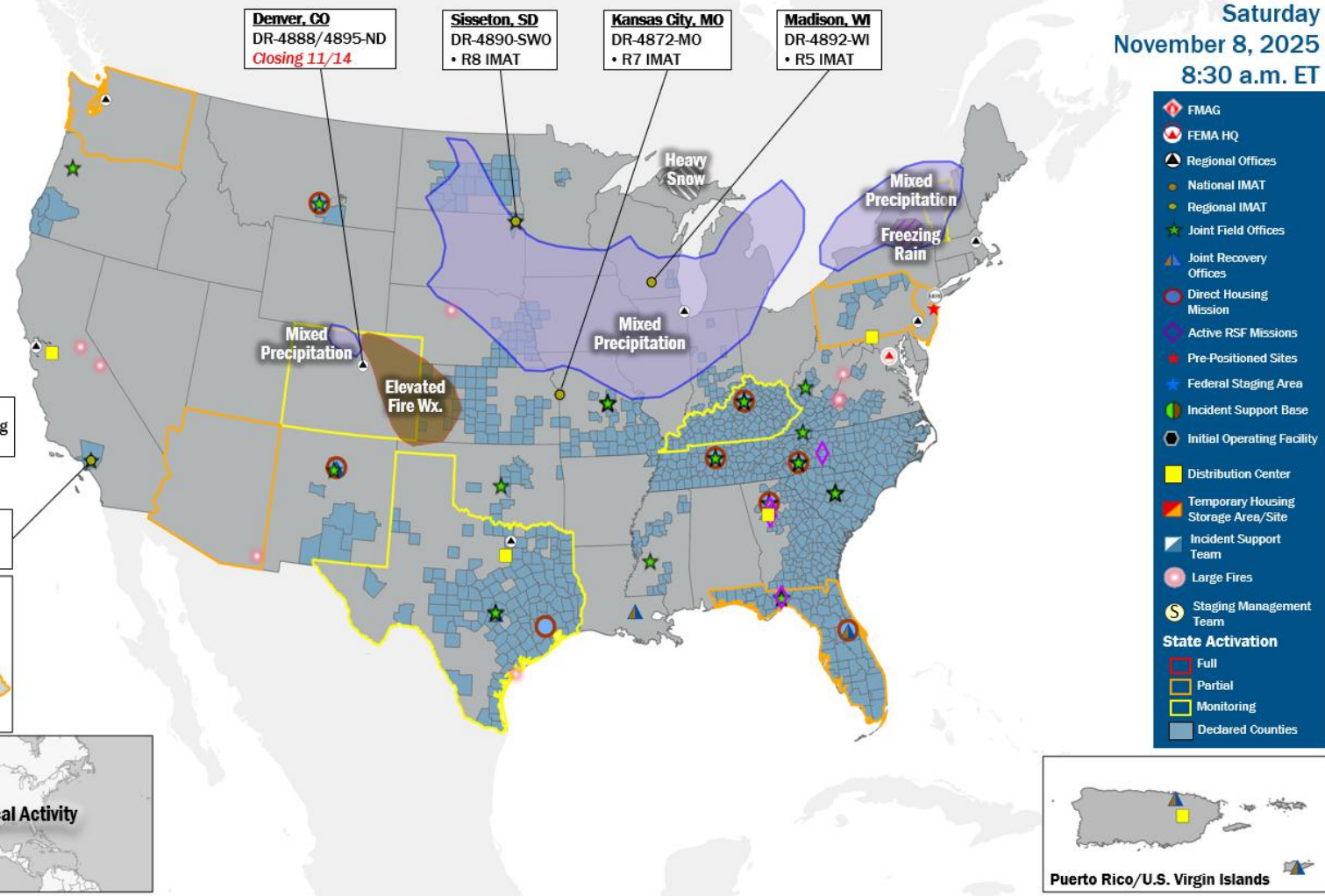
FEMA Common Operating Picture

17 Joint Field Offices **Supporting** **53** Major Disasters **+ 7** Emergency Declarations **12** Direct Housing Missions **6** RSF-Supported Disasters **6** Joint Recovery Offices

Saturday
November 8, 2025
8:30 a.m. ET

FEMA HQ		N-IMATs	
NWC	NRCC	2-5 Teams Available	
Monitoring	Steady State	Red	
FEMA REGIONS		White	
Watch	RRCC	Blue	
Monitoring	R1	Gold	
Monitoring	R2	HS	
Monitoring	R3	R-IMATs	
Monitoring	R4	≥ 7 Teams Available	
Monitoring	R5	R1	1
Monitoring	R6	R2	3
Monitoring	R7	R3	
Monitoring	R8	R4 (1)	
Monitoring	R9	R4 (2)	
Monitoring	R10	R5	WI (Sep 15)
Notes:		R6 (1)	2
NRCC/RWCs/RRCCs:		R6 (2)	
• R5 Watch: Staffing (Dayshift 7:00 a.m. - 7:00 p.m. ET)		R7	MO (Oct 27)
State EOCs:		R8	SD (Sep 22)
• HI: Wildfires		R9 (1)	CA (Jan 8)
• FL: Previous Incidents		R9 (2)	
• AZ/CO/TX: Flooding		R10	AK (Oct 12)
• VT: Drought			
• AK: Coastal Storms			
• WA: EMAC Support			
• MT: Prison Water System			
• NJ/PA: SNAP Disruption Event			
• KY: Plane Crash			
IMATs:			
• NSTR			
Surge Capacity Force			
Rostered	Deployed		
7,971	0		

REGIONAL BREAKDOWN				
	JFO	DR	EM	JRO
R1	0	0	0	0
R2	0	0	0	2
R3	2	6	1	0
R4	7	18	5	1
R5	0	3	0	0
R6	3	7	1	3
R7	1	11	0	0
R8	2	5	0	0
R9	1	1	0	0
R10	1	2	0	0



IM Workforce

11,701 (-38) Assigned
4,376 (-28) Unavailable
3,718 (-16) Deployed
31% / 3,607 (+6) Available

IM Cadre Availability

11 Cadres ≤ 25% Availability

Civil Rights: 18% (18/101); Disability Integration: 17% (3/18); External Affairs: 20% (61/302); Environmental Planning and Historic Preservation: 10% (69/668); Field Leadership: 11% (13/122); Financial Management: 23% (42/184); Hazard Mitigation: 13% (103/782); Human Resources: 25% (39/159); Public Assistance: 21% (439/2,063); Planning: 15% (53/359); Safety: 21% (19/90)

MERS

≥ 66%

36 Assigned
6 Unavailable
0 Deployed
30 Available

US&R

≥ 66%

28 Assigned
0 Unavailable
0 Deployed
28 Available

FCO

2 Type I

38 Assigned
3 Unavailable
32 (19 FCOR) Deployed
3 Available

Joint Preliminary Damage Assessments

Region	State / Location	Incident	IA	Number of Counties		Start - End
			PA	Requested	Completed	
6	PATN*	Severe Storms and Flooding Sep 28-29	IA	1	0	N/A
			PA	1	0	TBD - TBD
9	SCAT-NSN**	Heavy Rainfall and Flooding Sep 25-27, Oct 10-13	IA	0	0	N/A
			PA	1	1 (+1)	11/2 - 11/6
	AZ	Thunderstorms and Flooding Oct 10-13	IA	2	2 (+2)	11/3 - 11/7
			PA	0	0	N/A

*Pueblo of Acoma Tribal Nation, **San Carlos Apache Tribe - Native Sovereign Nation



FEMA

Declaration Requests in Process – 6

State / Tribe / Territory – Incident Description	Type	IA	PA	HM	Requested
OK – Severe Storms, Tornadoes, Straight-line Winds, and Flooding (Appeal)	DR		X	X	Aug 19
KS – Severe Storms, Straight-line Winds, Tornadoes, and Flooding	DR		X	X	Sep 17
RST* – Severe Storm, Straight-line Winds, and Tornado (Appeal)	DR	X	X	X	Sep 18
CO – Lee and Elk Fires, Flooding, and Mudslides	DR		X	X	Sep 26
MT – Water Systems Failure	EM		X		Oct 22
AZ – Severe Storms and Flooding	DR		X	X	Oct 24

*Rosebud Sioux Tribe



FEMA



FEMA

Helping people before, during, and after disasters.



Scan to subscribe to this briefing.