

FEMA National Watch Center

Daily Operations Briefing

Friday, October 31, 2025

8:30 a.m. ET



FEMA

National Current Operations / Monitoring

New Significant Incidents / Ongoing Operations

- No new significant incidents / operations

Hazard Monitoring

- Rain / Mixed Precipitation – Pacific Northwest, Great Lakes to Northeast
- Tropical Activity:
 - Atlantic:
 - Hurricane Melissa (CAT-1)
 - Western Pacific:
 - Invest 98W
 - Invest 99W

Disaster Declaration Activity

- No new declaration activity

Event Monitoring

- 54th New York City Marathon – NY



FEMA

New York City Marathon – New York City, NY

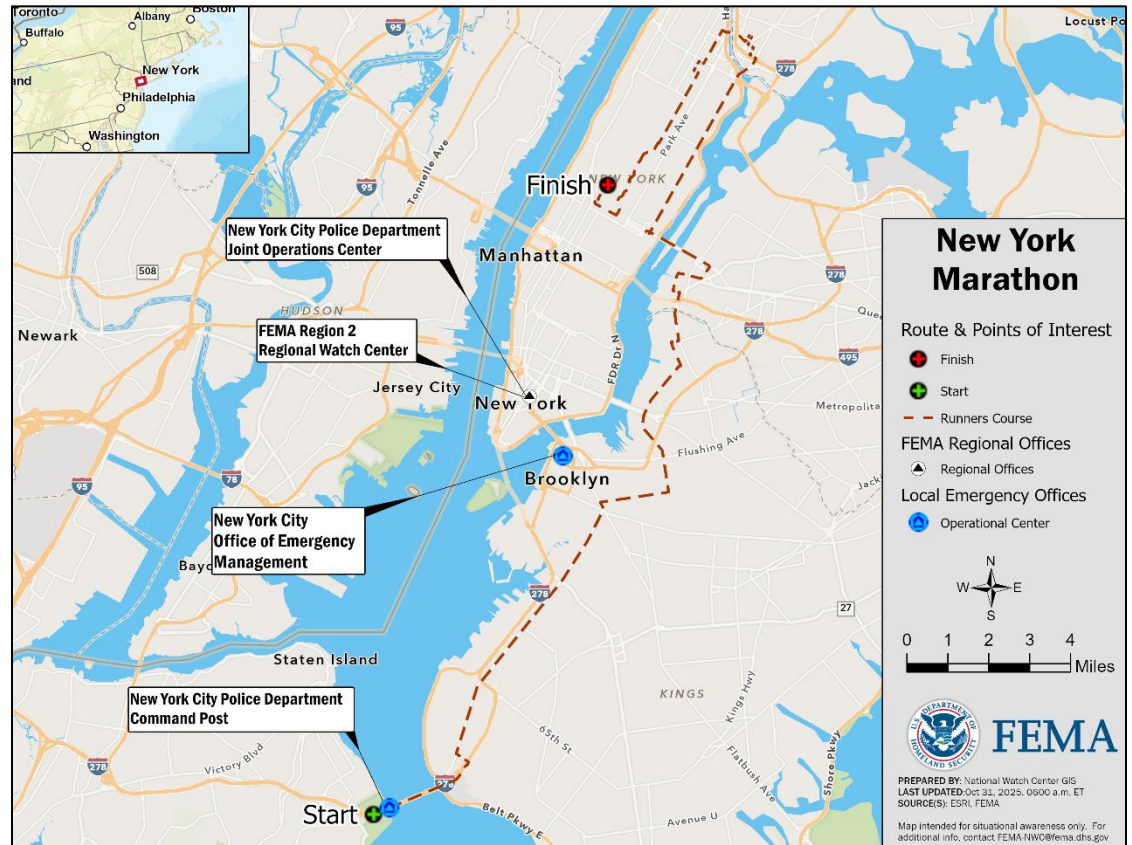
Situation: The 54th New York City Marathon will take place on Nov 2 across all five boroughs of New York City, NY. Approximately 50k runners and 2.5M spectators are anticipated. Multiple federal, state, and local law enforcement agencies are supporting this event; however, FEMA is the lead federal agency for emergency and consequence management.

State / Local Response:

- NYPD is the lead local law enforcement agency
- NY SEOC is at Normal Operations

FEMA / Federal Response:

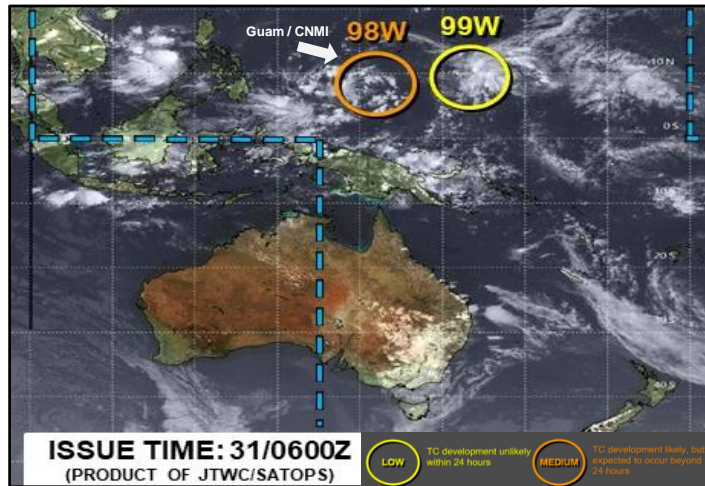
- FEMA Region 2 RWC will activate to Enhanced Watch on Nov 2
- NWC is Monitoring
- Maynard MERS assets are deploying to New York, NY, will arrive Nov 1



FEMA

Tropical Outlook

Western Pacific



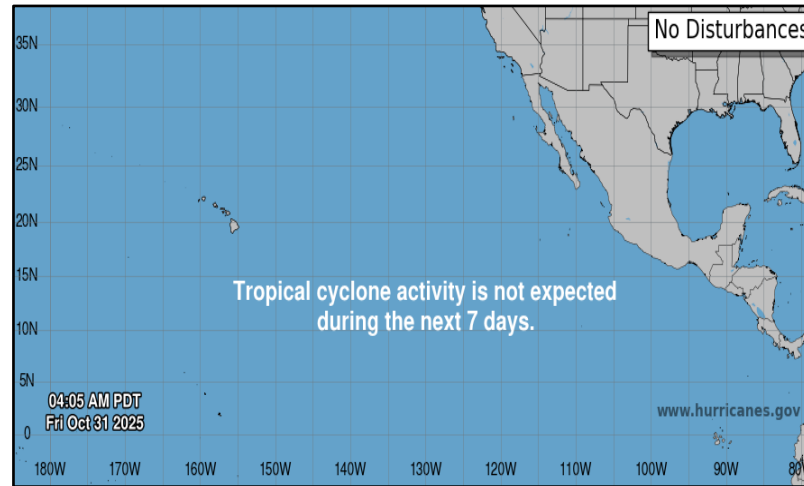
Invest 98W: (JTWC, as of 2:00 a.m. ET)

- Located approximately 300 miles ESE from Yap, Micronesia
- No direct impacts are expected for the Marianas from this system
- A second system is anticipated to approach the Mariana Islands next week

Invest 99W: (JTWC, as of 2:00 a.m. ET)

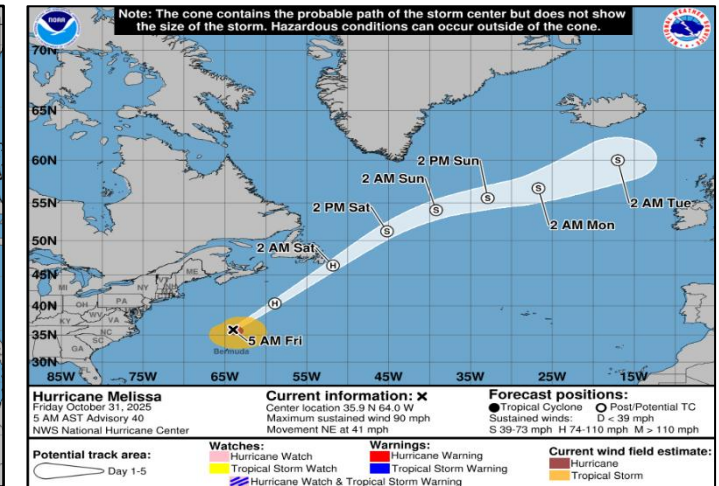
- Located approximately 125 miles ESE from Guam
- Potential development of a significant tropical cyclone within the next 24 hours is low
- May generate a heavy rain event over the weekend

Central and Eastern Pacific



- No tropical cyclones expected during the next 7 days

Atlantic



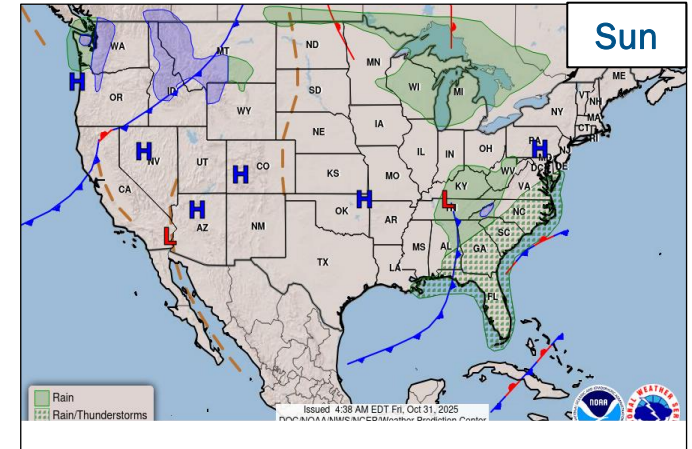
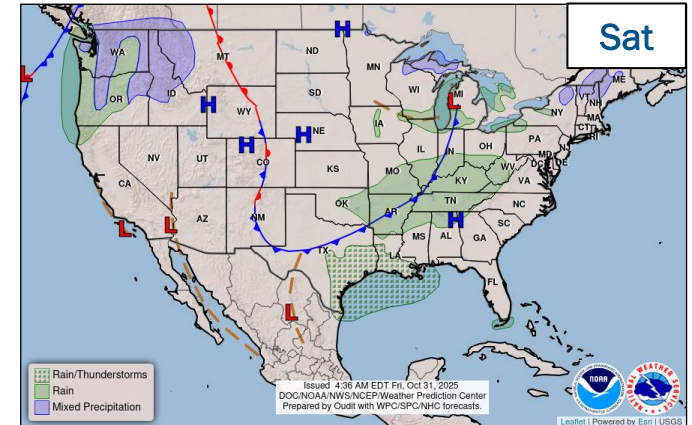
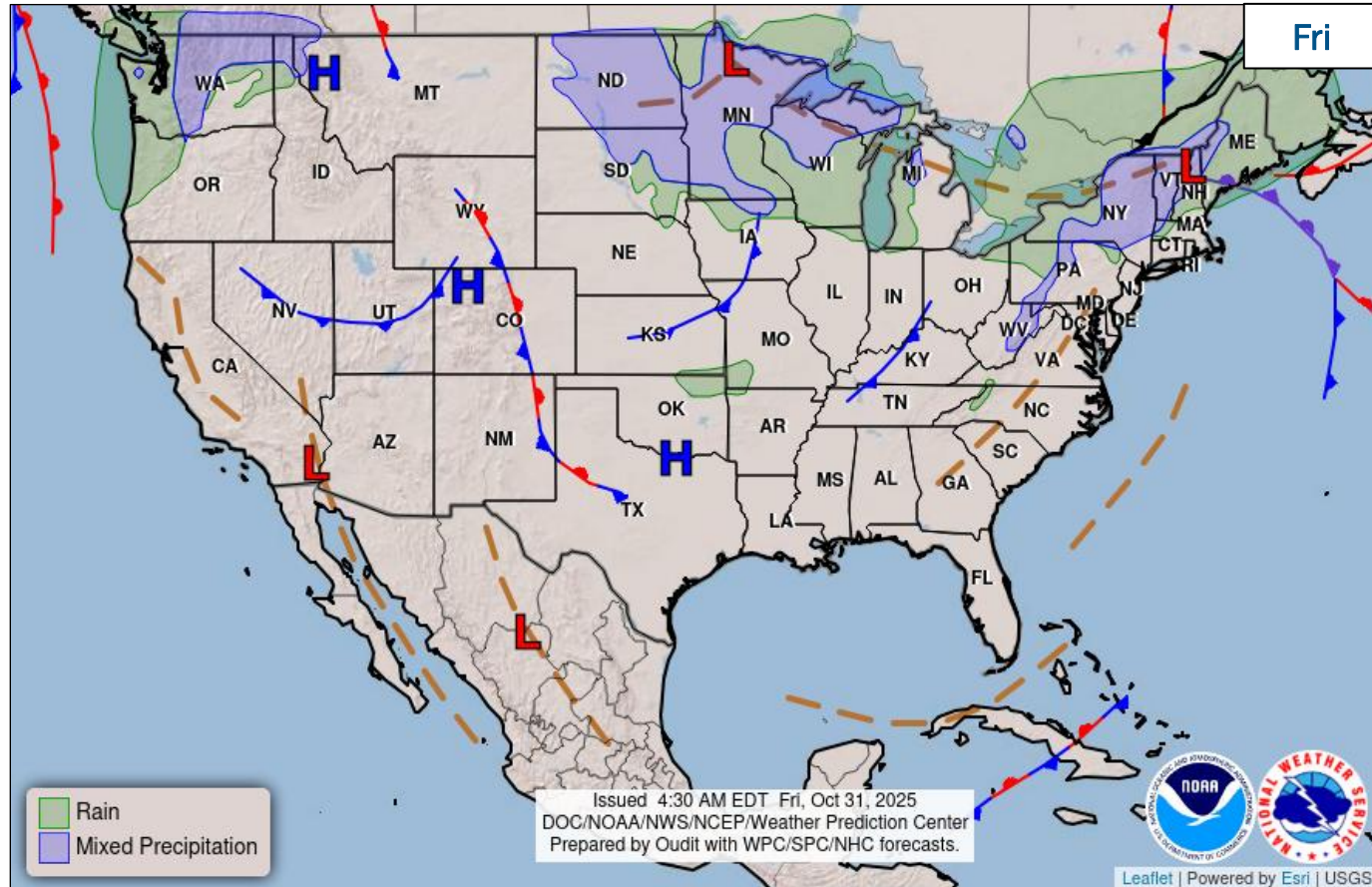
Hurricane Melissa (CAT-1): (Advisory #40, as of 5:00 a.m. ET)

- Located 255 miles N of Bermuda
- Maximum sustained winds 90 mph
- Moving NE at 41 mph
- Hurricane-force winds extend outward up to 80 miles; tropical-storm-force winds extend outward up to 265 miles from the center
- Expected to become a strong post-tropical cyclone later today
- Gradual weakening forecast over the weekend



FEMA

National Weather Forecast



FEMA

National Watch Center

FEMA Common Operating Picture

18 Joint Field Offices **Supporting** **56** Major Disasters **+** **7** Emergency Declarations **12** Direct Housing Missions **6** RSF-Supported Disasters **6** Joint Recovery Offices

Friday
October 31, 2025
8:30 a.m. ET

FEMA HQ		
NWC	NRCC	
Monitoring	Steady State	
FEMA REGIONS		
Watch	RRCC	
Monitoring	R1	Rostered
Monitoring	R2	Rostered
Monitoring	R3	Rostered
Monitoring	R4	Rostered
Monitoring	R5	Rostered
Monitoring	R6	Rostered
Monitoring	R7	Rostered
Monitoring	R8	Rostered
Monitoring	R9	Rostered
Monitoring	R10	Rostered
Notes:		
NRCC/RWCs/RRCCs:	State EOCs:	
• R5 Watch: Staffing (Dayshift 7:00 a.m. - 7:00 p.m. ET)	• HI: Wildfires	
	• FL: Previous Incidents	
	• AZ/CO/TX: Flooding	
	• VT: Drought	
	• AK: Coastal Storms	
	• WA: EMAC Support	
	• MT: Prison Water System	
IMATs:		
• NSTR		
Surge Capacity Force		
Rostered	Deployed	
7,971 (-399)	0	

N-IMATs	
2-5 Teams Available	
Red	
White	
Blue	
Gold	
HS	
R-IMATs	
≥ 7 Teams Available	
R1	2
R2	
R3	1
R4 (1)	
R4 (2)	3
R5	WI (Sep 15)
R6 (1)	
R6 (2)	
R7	MO (Oct 27)
R8	SD (Sep 22)
R9 (1)	CA (Jan 8)
R9 (2)	
R10	AK (Oct 12)
	Fully Mission Capable (FMC)
	Partially Mission Capable (PMC)
	Not Mission Capable (NMC)
	Deployed

REGIONAL BREAKDOWN				
	JFO	DR	EM	JRO
R1	0	0	0	0
R2	0	0	0	2
R3	2	6	1	0
R4	7	19	5	1
R5	0	3	0	0
R6	4	9	1	3
R7	1	11	0	0
R8	2	5	0	0
R9	1	1	0	0
R10	1	2	0	0

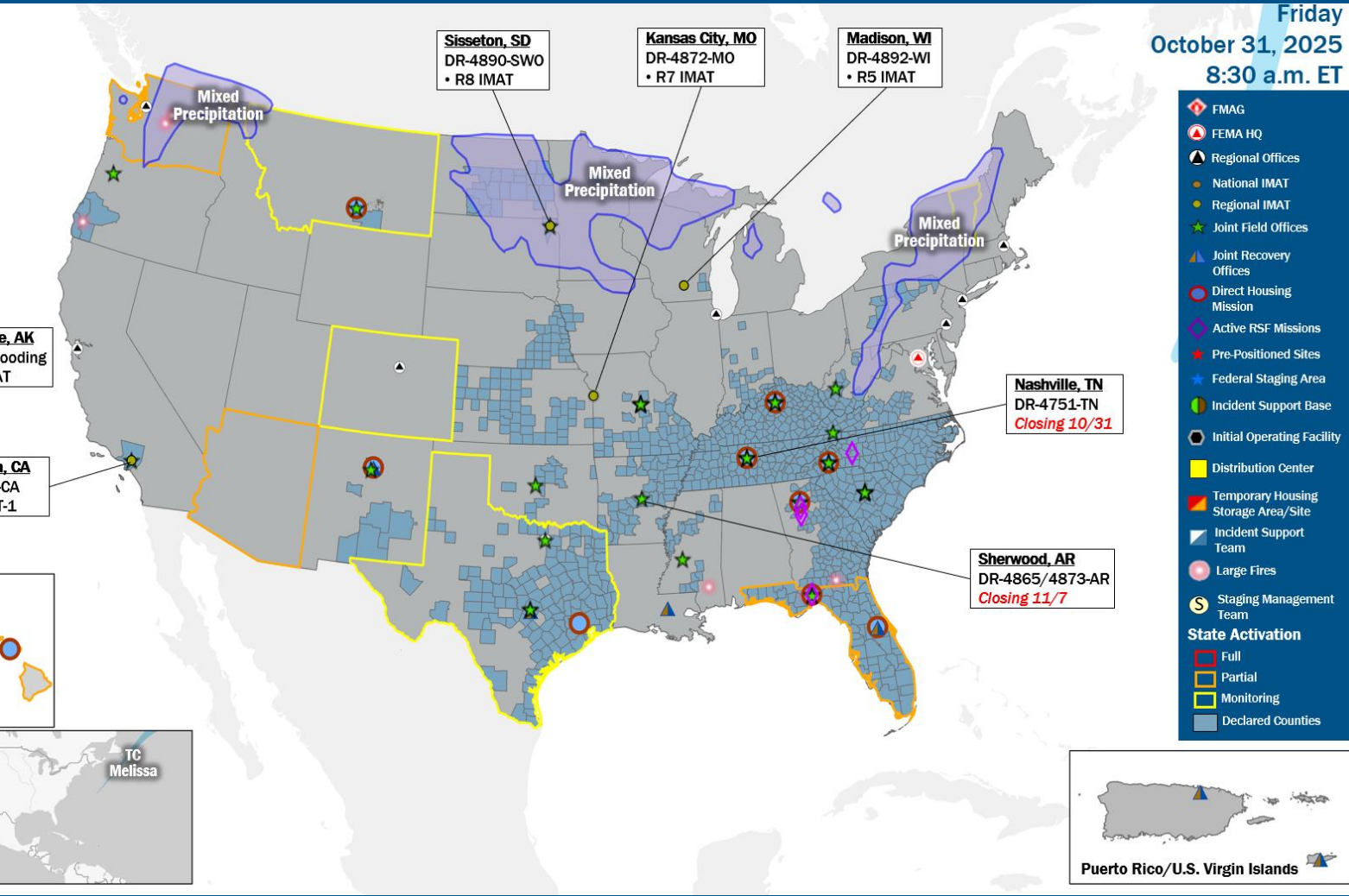
Alaska
Anchorage, AK
Coastal Flooding
• R10 IMAT

Commonwealth of Northern Mariana Islands

Guam

Hawaii
Pasadena, CA
DR-4856-CA
• R9 IMAT-1

American Samoa
TC Melissa



- FMAG
- FEMA HQ
- Regional Offices
- National IMAT
- Regional IMAT
- Joint Field Offices
- Joint Recovery Offices
- Direct Housing Mission
- Active RSF Missions
- Pre-Positioned Sites
- Federal Staging Area
- Incident Support Base
- Initial Operating Facility
- Distribution Center
- Temporary Housing Storage Area/Site
- Incident Support Team
- Staging Management Team
- Large Fires

State Activation

- Full
- Partial
- Monitoring
- Declared Counties

IM Workforce

11,750 (-1) Assigned
4,400 (+12) Unavailable
3,842 (+5) Deployed

30% / 3,508 (-18) Available

IM Cadre Availability

12 Cadres ≤ 25% Availability

Civil Rights: 15% (15/101); Disability Integration: 17% (3/18); External Affairs: 19% (59/307); Environmental Planning and Historic Preservation: 11% (76/672); Field Leadership: 13% (16/122); Financial Management: 20% (36/184); Hazard Mitigation: 13% (106/788); Human Resources: 24% (38/159); Interagency Recovery Coordination: 22% (44/200); Public Assistance: 20% (423/2,074); Planning: 15% (54/359); Safety: 21% (19/91)

MERS

≥ 66%

36 Assigned
6 Unavailable
0 Deployed

30 Available

US&R

≥ 66%

28 Assigned
0 Unavailable
0 Deployed

28 Available

FCO

≤ 1 Type I

38 Assigned
4 Unavailable
32 (19 FCOR) Deployed

2 Available

Joint Preliminary Damage Assessments

Region	State / Location	Incident	IA	Number of Counties		Start - End
			PA	Requested	Completed	
6	PATN*	Severe Storms and Flooding Sep 28-29	IA	1	0	N/A
			PA	1	0	TBD - TBD
7	KS	Severe Storms, Straight-line Winds, Torrential Rain, and Flooding Sep 8-10	IA	0	0	N/A
			PA	5	3	10/14 - TBD
8	CO	Flooding and Severe Storms Oct 13	IA	2	0	11/3 - TBD
			PA	3	0	10/28 - TBD

*Pueblo of Acoma Tribal Nation



FEMA

Declaration Requests in Process – 6

State / Tribe / Territory – Incident Description	Type	IA	PA	HM	Requested
OK – Severe Storms, Tornadoes, Straight-line Winds, and Flooding (Appeal)	DR		X	X	Aug 19
KS – Severe Storms, Straight-line Winds, Tornadoes, and Flooding	DR		X	X	Sep 17
RST* – Severe Storm, Straight-line Winds, and Tornado (Appeal)	DR	X	X	X	Sep 18
CO – Lee and Elk Fires, Flooding, and Mudslides	DR		X	X	Sep 26
MT – Water Systems Failure	EM		X		Oct 22
AZ – Severe Storms and Flooding	DR		X	X	Oct 24

*Rosebud Sioux Tribe



FEMA



FEMA

Helping people before, during, and after disasters.



Scan to subscribe to this briefing.