

FEMA National Watch Center

Daily Operations Briefing

Wednesday, October 15, 2025

8:30 a.m. ET



FEMA

National Current Ops / Monitoring

New Significant Incidents / Ongoing Ops

- Coastal Flooding – Alaska

Disaster Declaration Activity

- No new declaration activity

Hazard Monitoring

- Rain / Thunderstorms – Southern Colorado, New Mexico
- Tropical Activity:
 - Atlantic:
 - Tropical Storm Lorenzo
 - Eastern and Central Pacific:
 - Disturbance 1 (EP91): Medium (60%)
 - Western Pacific:
 - Invest 96W: Low

Event Monitoring

- No new significant events



FEMA

Coastal Flooding – Alaska



Situation: The remnants of Halong brought multiple storm surges with hurricane-force winds, large waves, and coastal flooding impacting communities of the Yukon–Kuskokwim Delta over the past week. A third storm system is bringing additional rainfall to the Delta through Thursday. Coastal flooding is not anticipated; however, water levels will continue to elevate and further coastal erosion is possible. (FEMA Region 10 SLB, as of 7:03 p.m. ET, Oct 14)

Lifeline Impacts: (FEMA Region 10 SLB #3, as of 10:03 p.m. ET, Oct 14)

Safety and Security:

- Approximately 147 homes reported destroyed
- Kipnuk:
 - All citizens are accounted for in joint search efforts
- Kwigillingok: USCG suspends search for two missing personnel

Food, Hydration, Shelter:

11 independent shelters open / 1,509 (-241) occupants (ARC Shelter Report, as of 6:50 a.m. ET, Oct 15)

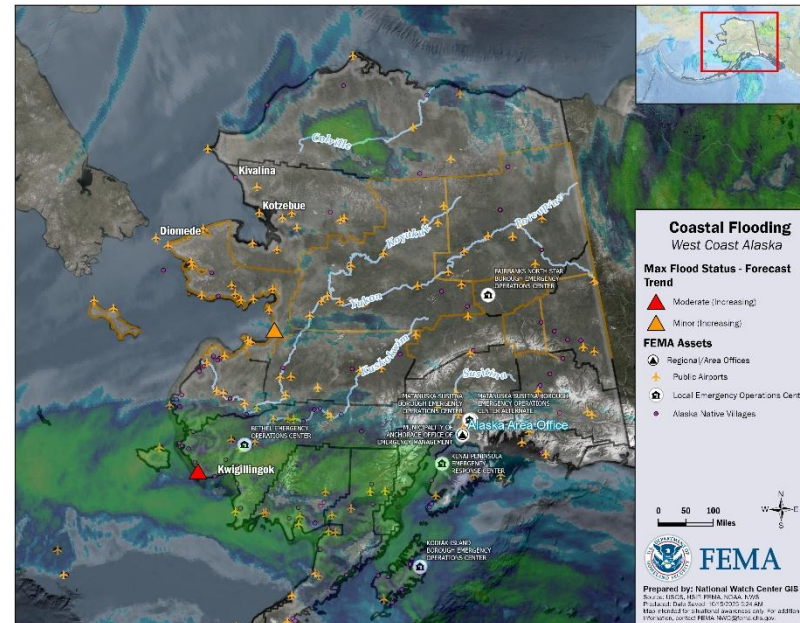
Health & Medical: 1 fatality reported

Energy:

- Kipnuk:
 - Council office power is operational; rest of town is down
 - Water Plant is without power, backup generator remain down
- Koyukuk, Nulato, and Cheformak are partially operating on generators

Communication:

- Kipnuk: Communications have been established using a Starlink terminal and satellite phone; AK SEOC continues working with partners for full restoration
- Kwigillingok: Cell service is fully restored
- Nightmute: Intermittent communication service



The NWC will continue to monitor in coordination with FEMA Region 10, with continued reporting in the twice daily FEMA National Situation Report (3:00 a.m. ET / 5:00 p.m. ET) and the FEMA Daily Operations Briefing (8:30 a.m. ET).

Transportation:

- Kotzebue:
 - The First Bridge has reopened
 - Airport experiencing disruptions due to being along community evacuation route
- All airports have reopened
- Federal Operations Support Mission Assignment for Civil Air Patrol for damage is delayed and will be rescheduled

Water Systems:

- Napaskiak:
 - Water and sewage systems are inoperable
 - Well system is down; boil water notices posted
- Nightmute: Wastewater treatment system is flooded and closed
- Quinhagak: Raw water line is severely damaged

State / Local Response:

- AK SEOC is at Partial Activation (Landslides/Western Coast Storms); increased staffing for 24/7 activation
- AK Governor declared a State Disaster Emergency and activated the Alaska National Guard on Oct 9

FEMA / Federal Response:

FEMA Region 10:

- Bothell MOC is Monitoring; RRCC is at Enhanced Watch, will activate to Level 3 from 10:30 a.m. ET – 9:00 p.m. ET, Oct 15 with ESFs 1, 8, 9, and Defense Coordinating Element
- State, Tribal, and Mass Care LNOs deployed to AK SEOC
- R-IMAT staged to Alaska Area Office

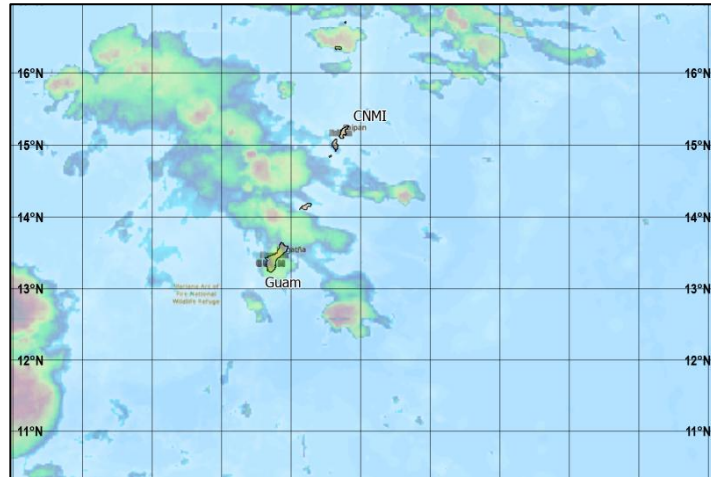
HQ:

- FEMA NWC is Monitoring; NRCC is at Steady State (Blue Team Rostered)



Tropical Outlook

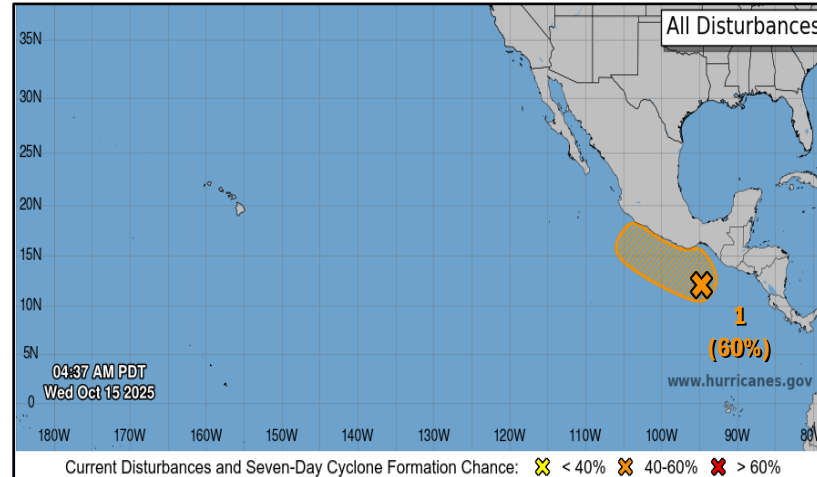
Western Pacific



Invest 96W: (as of 2:00 a.m. ET)

- Located **184** miles **W** of Guam
- Moving NW with gradual intensification over time
- Max sustained winds 20-26 mph
- Flood Watch for Guam and Rota with 3-5" of rain forecast
- **The potential for the development of a significant tropical cyclone within the next 24 hours remains low**

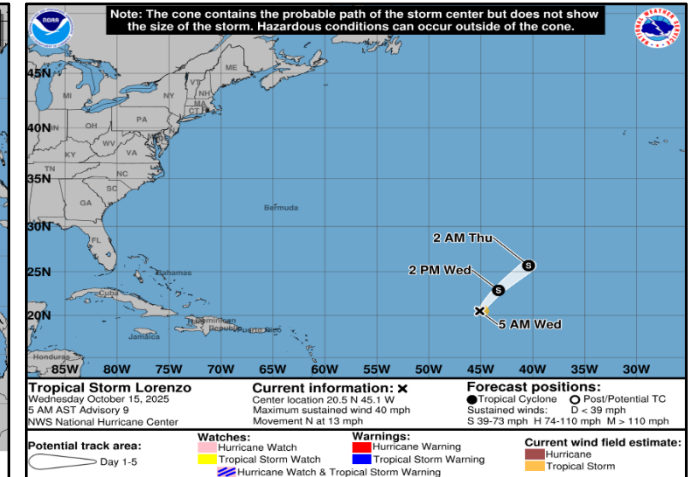
Central and Eastern Pacific



Disturbance 1 (EP91): (as of 2:00 a.m. ET)

- Located a couple hundred miles S of Southern Mexico
- Environmental conditions appear more conducive; tropical depression could form late this week or over the weekend
- Formation chance – 48-hour: Medium (**40%**); 7 day: Medium (**60%**)

Atlantic



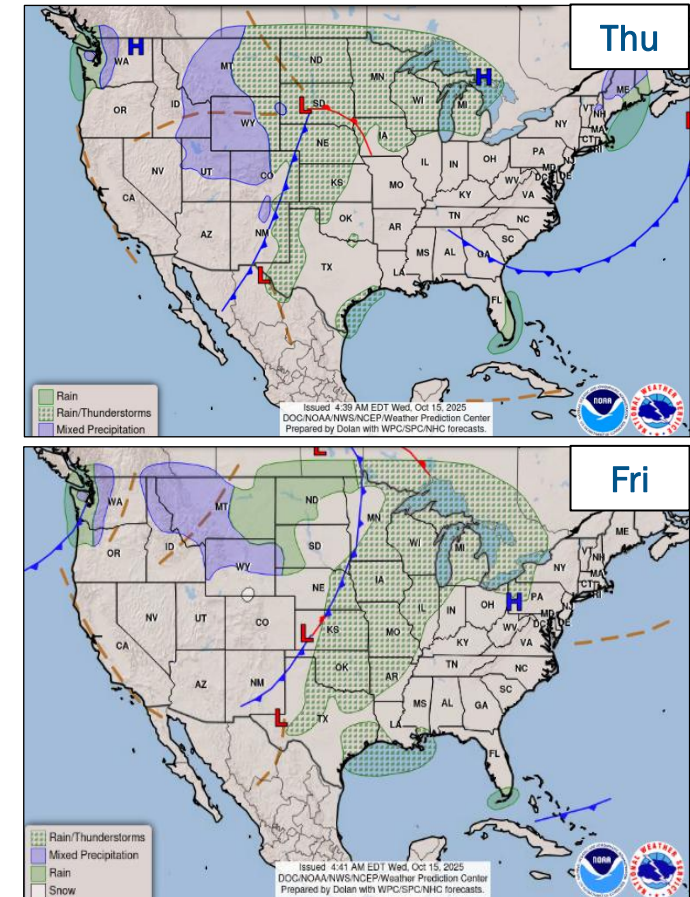
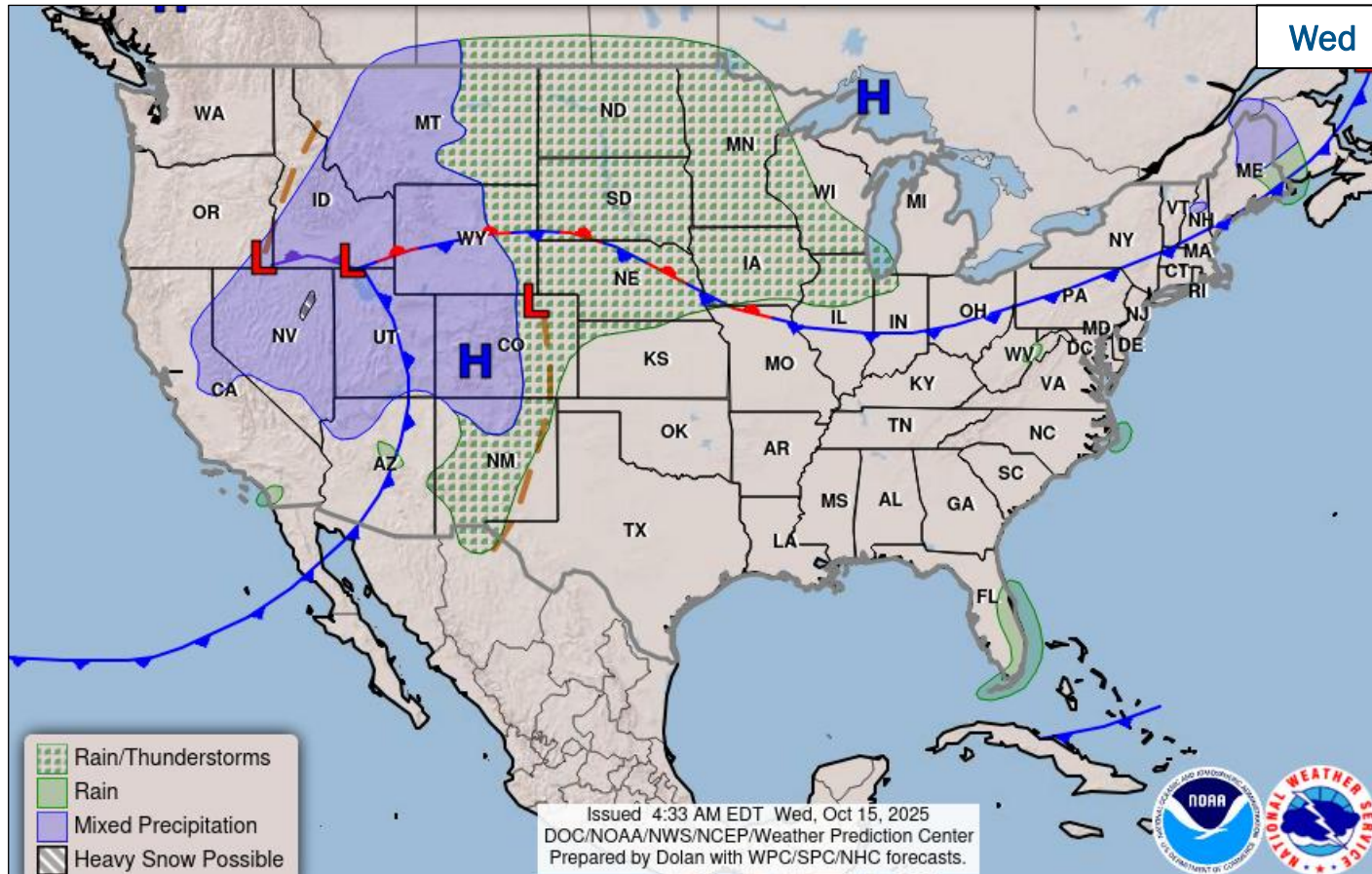
Tropical Storm Lorenzo: (Advisory #9 as of 5:00 a.m. ET)

- Located **1,415** miles **WNW** of the Cabo Verde Islands
- Maximum sustained winds **40** mph; moving NW at **13** mph
- Tropical-storm-force winds extend outward up to **60** miles from the center
- **Little change in strength is forecast, and Lorenzo is forecast to dissipate by tomorrow**



FEMA

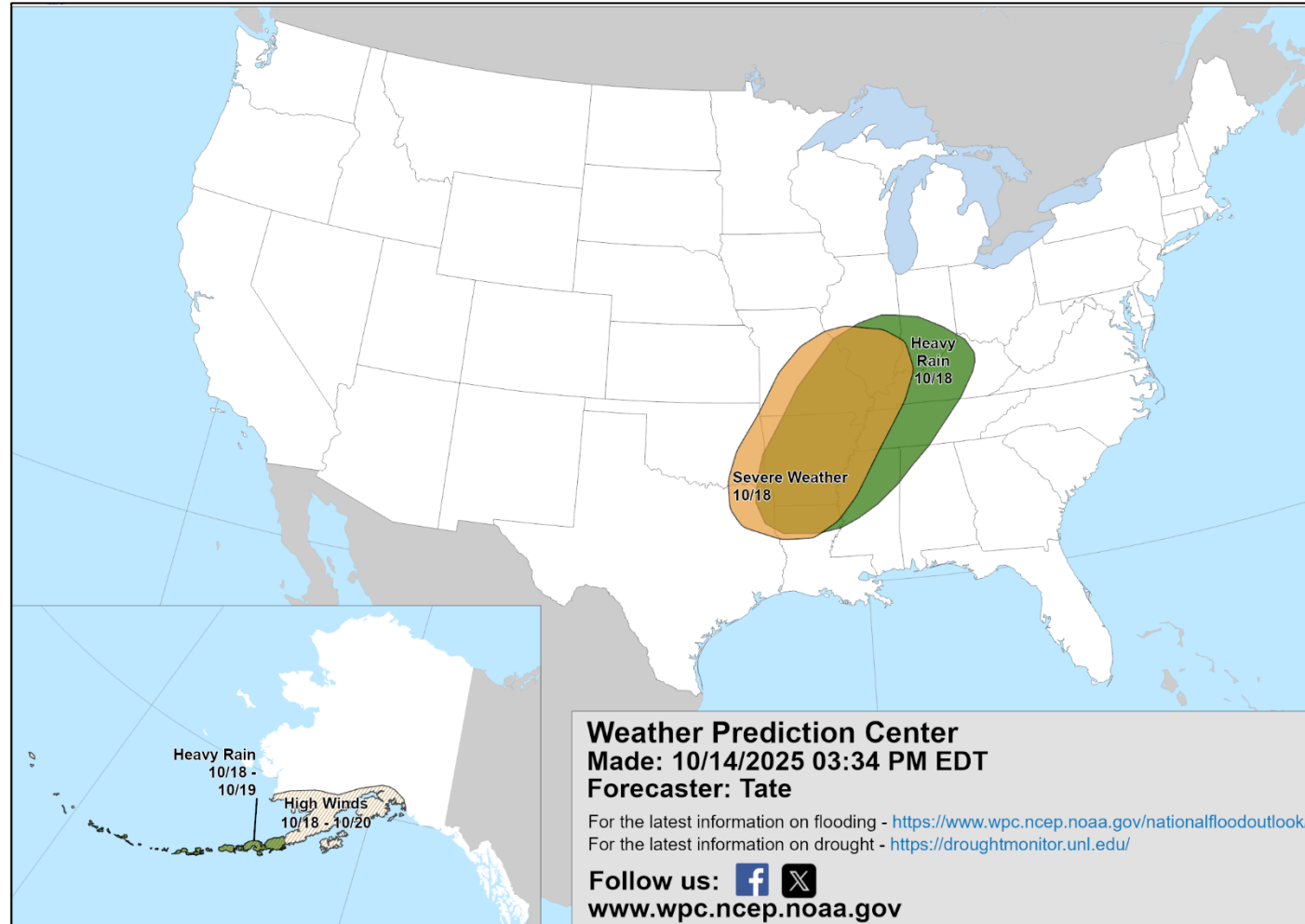
National Weather Forecast



FEMA

National Watch Center

Hazards Outlook – Oct 17-21



FEMA

FEMA Common Operating Picture

16 Joint Field Offices **Supporting** **55** Major Disasters **+** **7** Emergency Declarations **12** Direct Housing Missions **6** RSF-Supported Disasters **6** Joint Recovery Offices

Wednesday
October 15, 2025
8:30 a.m. ET

FEMA HQ		
NWC	NRCC	
Monitoring	Steady State	
FEMA REGIONS		
Watch	RRCC	
Monitoring	R1	Rostered
Monitoring	R2	Rostered
Monitoring	R3	Rostered
Monitoring	R4	Rostered
Monitoring	R5	Rostered
Monitoring	R6	Rostered
Monitoring	R7	Rostered
Enhanced	R8	Rostered
Monitoring	R9	Rostered
Monitoring	R10	Enhanced

N-IMATs	
2-5 Teams Available	
Red	
White	
Blue	
Gold	
HS	

REGIONAL BREAKDOWN				
	JFO	DR	EM	JRO
R1	0	0	0	0
R2	0	0	0	2
R3	2	7	1	0
R4	7	19	5	1
R5	0	2	0	0
R6	4	9	1	3
R7	1	10	0	0
R8	1	4	0	0
R9	1	3	0	0
R10	0	1	0	0

R-IMATs	
≥ 7 Teams Available	
R1	3
R2	
R3	1
R4 (1)	
R4 (2)	
R5	WI (Sep 15)
R6 (1)	
R6 (2)	Reconstituting
R7	2
R8	SD (Sep 22)
R9 (1)	CA (Jan 8)
R9 (2)	
R10	AK (Oct 12)

Notes:

NRCC/RWCs/RRCCs:

- R5 Watch: Staffing (Dayshift 7:00 a.m. - 7:00 p.m. ET)
- R8 Watch/Denver MOC: TC Priscilla Flooding
- R10 RRCC Level 3: Coastal Flooding (10:30 am - 9:00 pm ET)**

State EOCs:

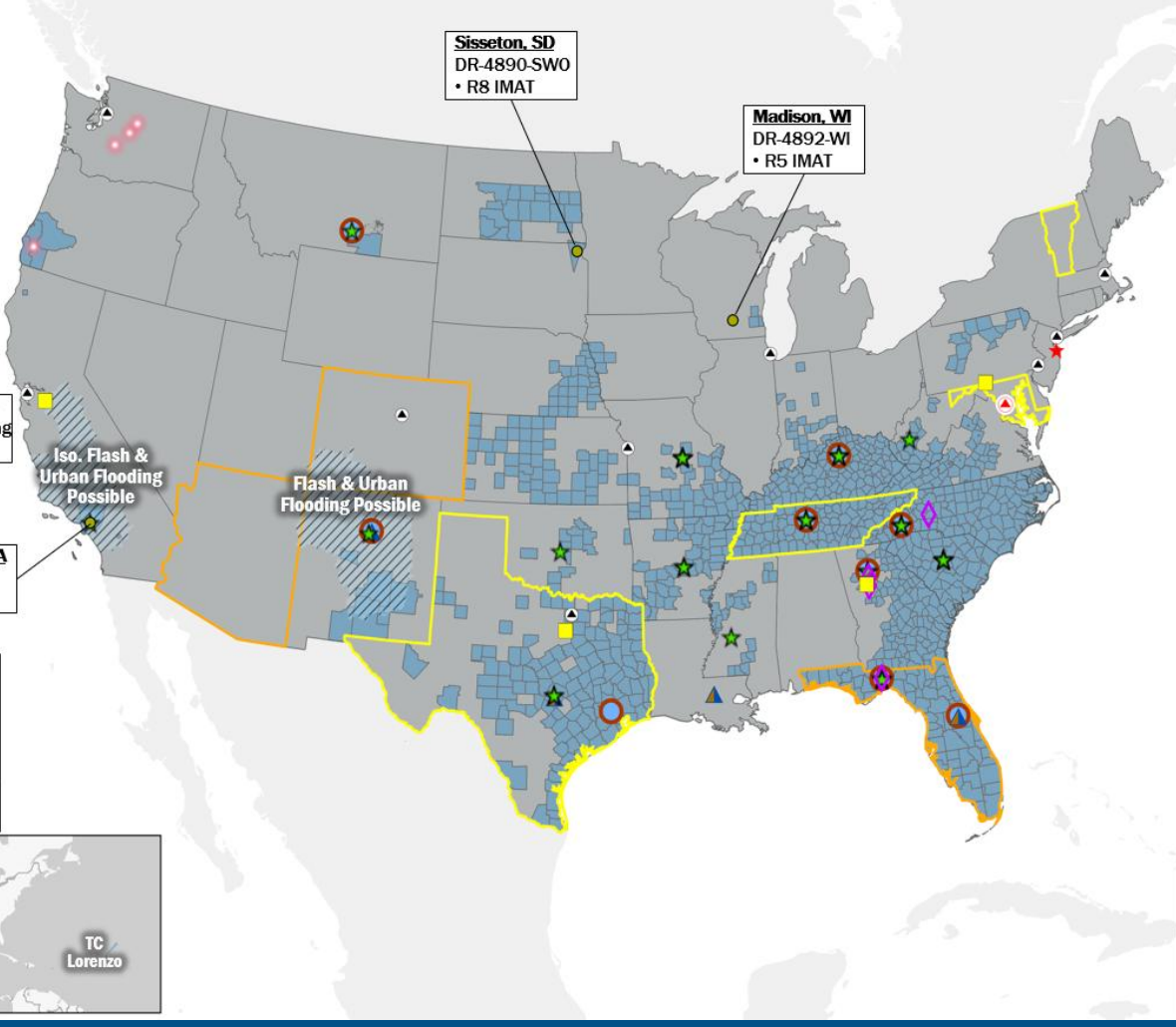
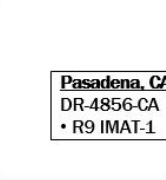
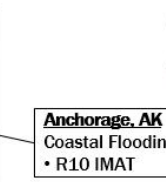
- HI: Wildfires
- FL: Previous Incidents
- AZ/CO/MD/TX/: Flooding
- VT: Drought
- AK: Landslides/ Western Coast Storms
- TN: Plant Explosion

IMATs:

- R6 Team 2: Reconstituting

Volunteer Force	
Rostered 6,809	Deployed 6
Surge Capacity Force	
Rostered 8,179 (+3)	Deployed 0

Fully Mission Capable (FMC)
Partially Mission Capable (PMC)
Not Mission Capable (NMC)
Deployed



Legend:

- FMAG
- FEMA HQ
- Regional Offices
- National IMAT
- Regional IMAT
- Joint Field Offices
- Joint Recovery Offices
- Direct Housing Mission
- Active RSF Missions
- Pre-Positioned Sites
- Federal Staging Area
- Incident Support Base
- Initial Operating Facility
- Distribution Center
- Temporary Housing Storage Area/Site
- Incident Support Team
- Large Fires
- Staging Management Team

State Activation:

- Full
- Partial
- Monitoring
- Declared Counties



IM Workforce

11,778 Assigned
4,164 (+21) Unavailable
4,055 (-46) Deployed

30% / 3,559 (+25) Available

IM Cadre Availability

Civil Rights: 15% (15/101); Disability Integration: 22% (4/18); External Affairs: 20% (62/309); Environmental Planning and Historic Preservation: 10% (68/678); Field Leadership: 12% (15/122); Financial Management: 21% (38/184); Hazard Mitigation: 14% (110/784); Human Resources: 23% (37/162); Public Assistance: 19% (395/2,078); Planning: 16% (59/360); Safety: 24% (22/91); Security: 23% (26/111)

12 Cadres ≤ 25% Availability

MERS
≥ 66%

36 Assigned
6 Unavailable
0 Deployed

30 Available

US&R
≥ 66%

28 Assigned
1 Unavailable
0 Deployed

27 Available

FCO
≤ 1 Type I

39 Assigned
4 Unavailable
33 (-1) (21 FCO) Deployed

2 (+1) Available

Joint Preliminary Damage Assessments

Region	State / Location	Incident	IA	Number of Counties		Start – End
			PA	Requested	Complete	
7	KS	Severe Storms, Straight-line Winds, Torrential Rain, and Flooding Sep 8-10	IA	0	0	N/A
			PA	5	0	10/14 – N/A



FEMA

Declaration Requests in Process – 12

State / Tribe / Territory – Incident Description	Type	IA	PA	HM	Requested
MD – Severe Storm and Flooding (Appeal)	DR		X	X	Aug 19
OK – Severe Storms, Tornadoes, Straight-line Winds, and Flooding (Appeal)	DR		X	X	Aug 19
LLBO* – Severe Storm and Straight-line Winds	DR	X	X	X	Aug 19
IL – Severe Storms and Flooding	DR	X		X	Aug 21
VT – Severe Storm and Flooding	DR		X	X	Aug 22
AK – Chevak Public Safety Building Fire	DR		X	X	Aug 28
ND – Severe Storms, Straight-line Winds, and Tornadoes	DR		X	X	Sep 4
NE – Severe Storms, Straight-line Winds, and Flooding	DR		X	X	Sep 4
IL – Severe Storms and Flooding	DR	X		X	Sep 15
KS – Severe Storms, Straight-line Winds, Tornadoes, and Flooding	DR		X	X	Sep 17
RST** – Severe Storm, Straight-line Winds, and Tornado (Appeal)	DR	X	X	X	Sep 18
CO – Lee and Elk Fires, Flooding, and Mudslides	DR		X	X	Sep 26

* Leech Lake Band of Ojibwe

** Rosebud Sioux Tribe



FEMA



FEMA

Helping people before, during, and after disasters.



Scan to subscribe to this briefing.