

FEMA National Watch Center

# Daily Operations Briefing

Sunday, September 28, 2025

8:30 a.m. ET



**FEMA**

# National Current Ops / Monitoring

---

## New Significant Incidents / Ongoing Ops

- Tropical Depression Nine – Southeast and Mid-Atlantic
- Flash Flooding – Arizona

## Hazard Monitoring

- Excessive Rainfall / Flash Flooding – Southwest
- Tropical Activity:
  - Atlantic:
    - Hurricane Humberto (CAT-4)
    - Tropical Depression Nine
  - Eastern and Central Pacific:
    - Tropical Storm Narda
    - Disturbance 1: Med (40%)

---

## Disaster Declaration Activity

- Request: Emergency Declaration – SC

## Event Monitoring

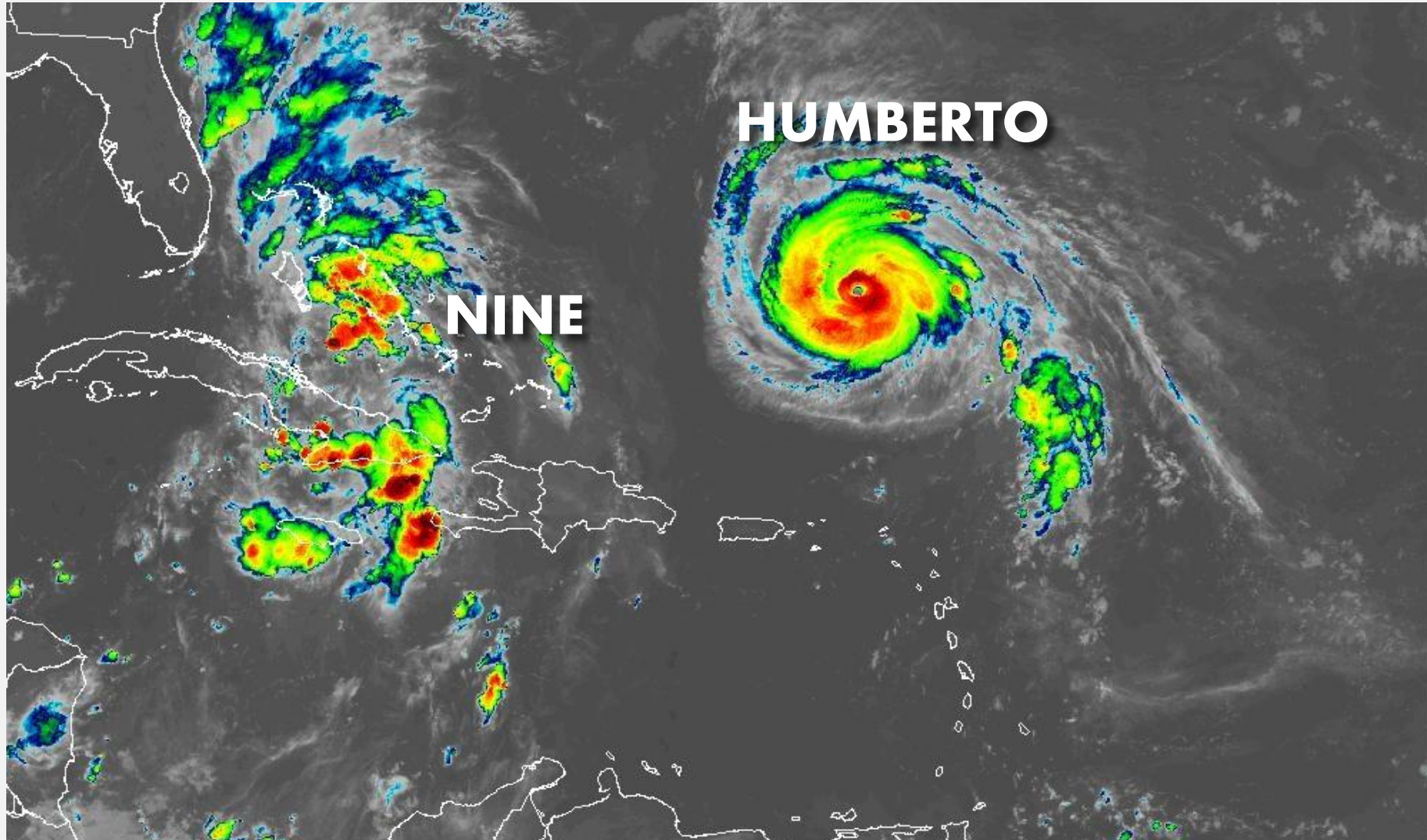
- No new significant events



**FEMA**

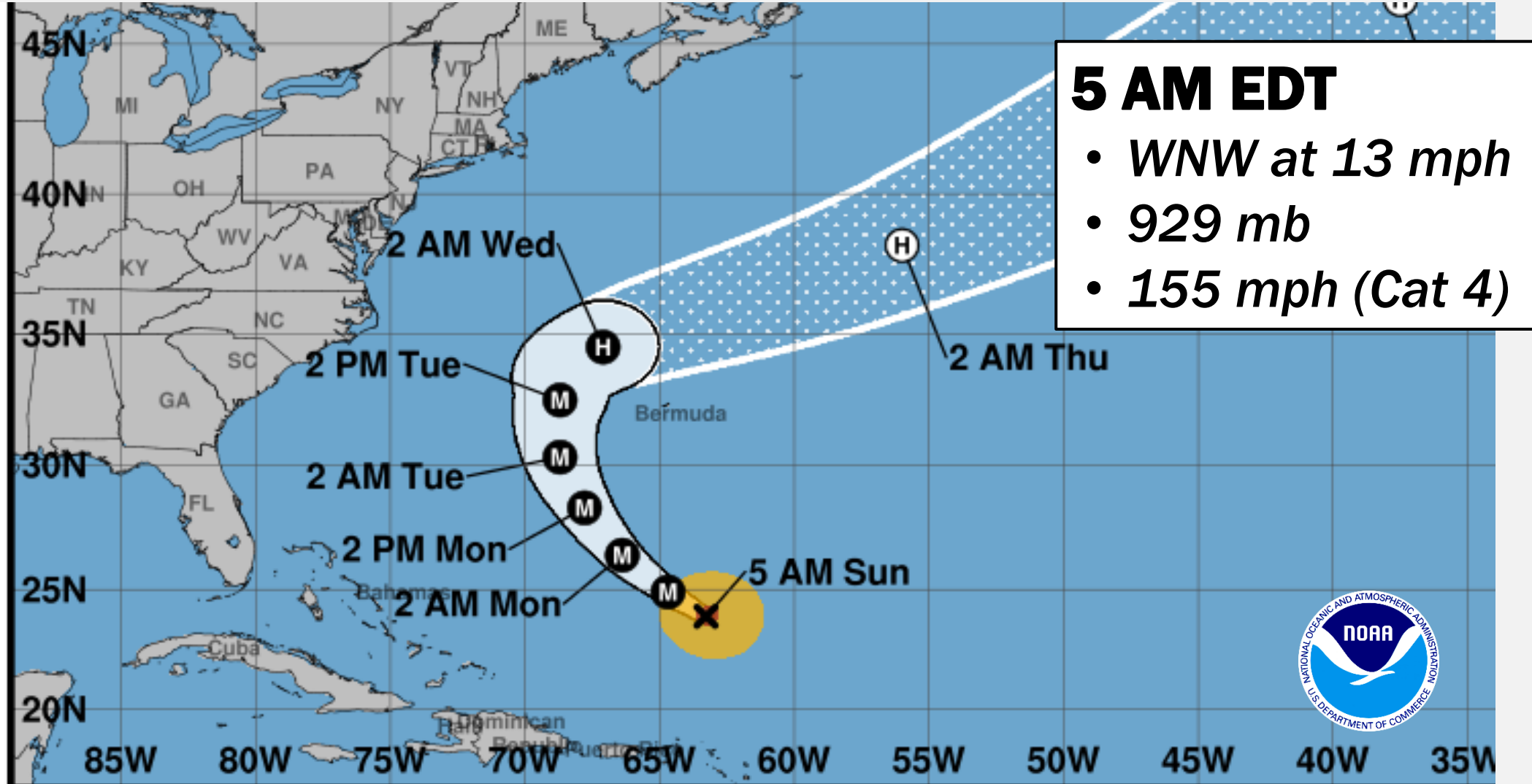
# Southwest Atlantic

## SATELLITE IMAGE



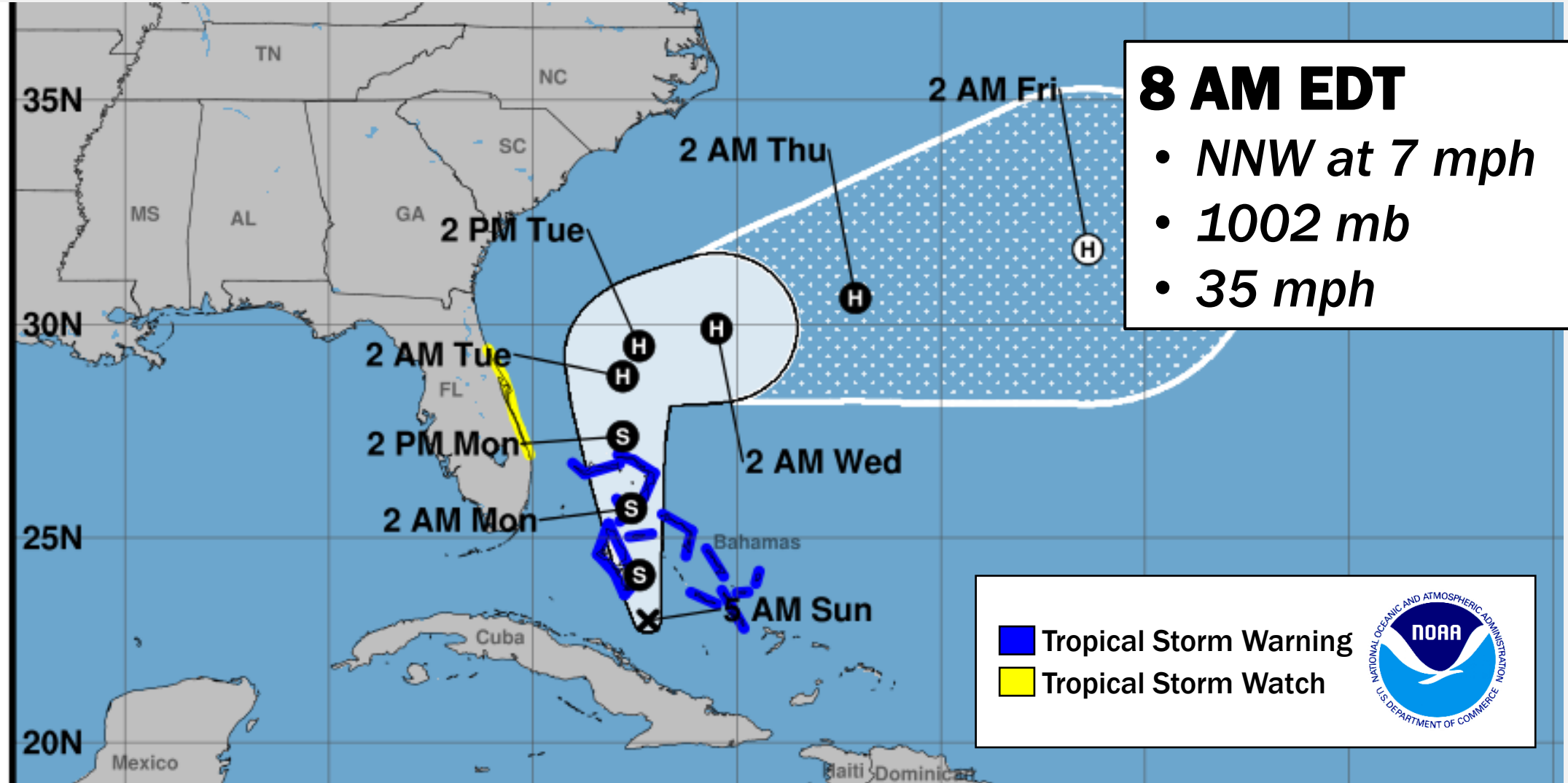
# Hurricane Humberto

## FORECAST TRACK



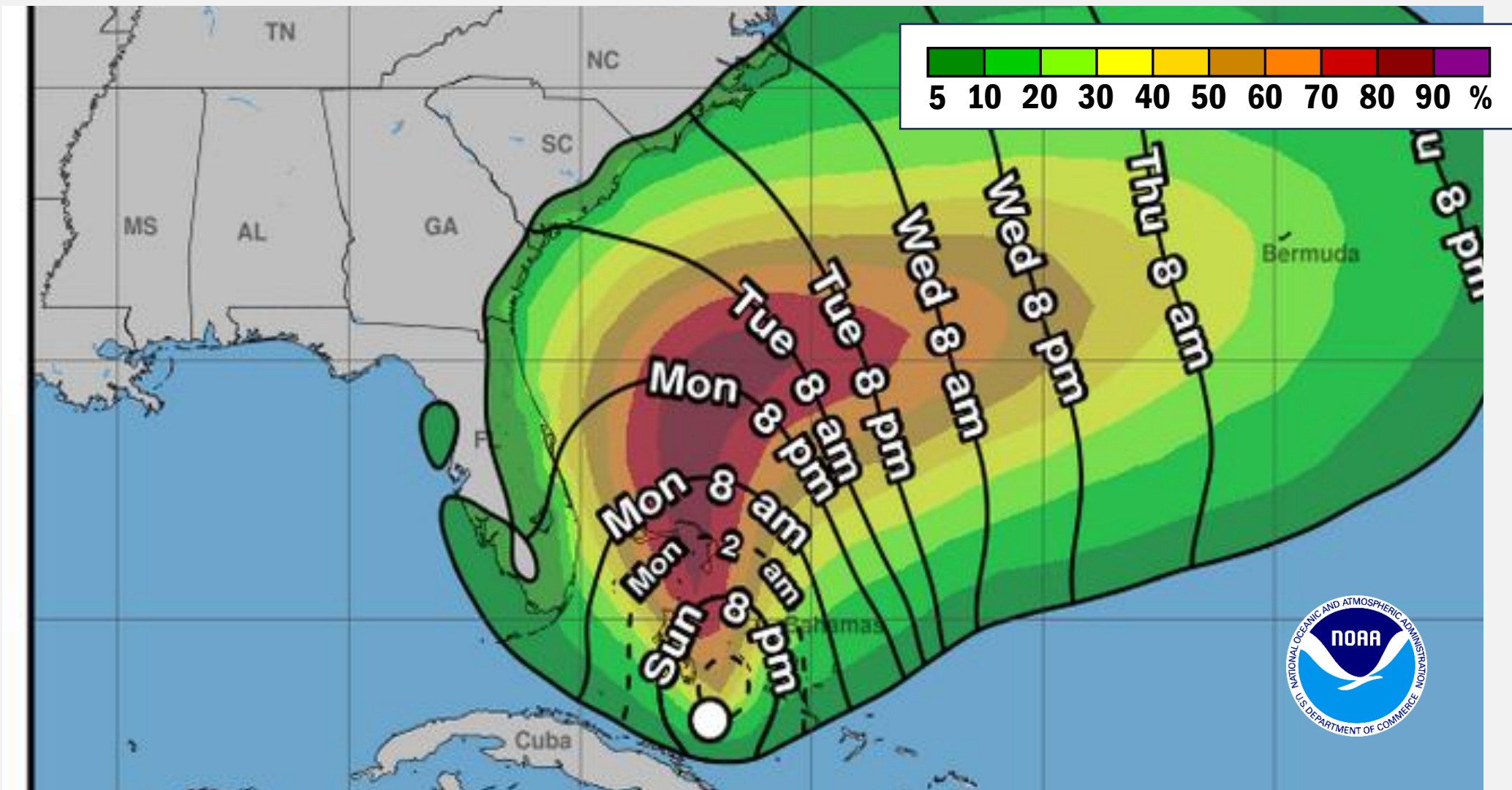
# Tropical Depression Nine

## FORECAST TRACK



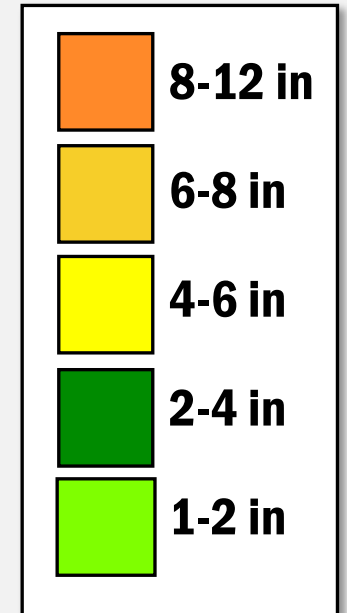
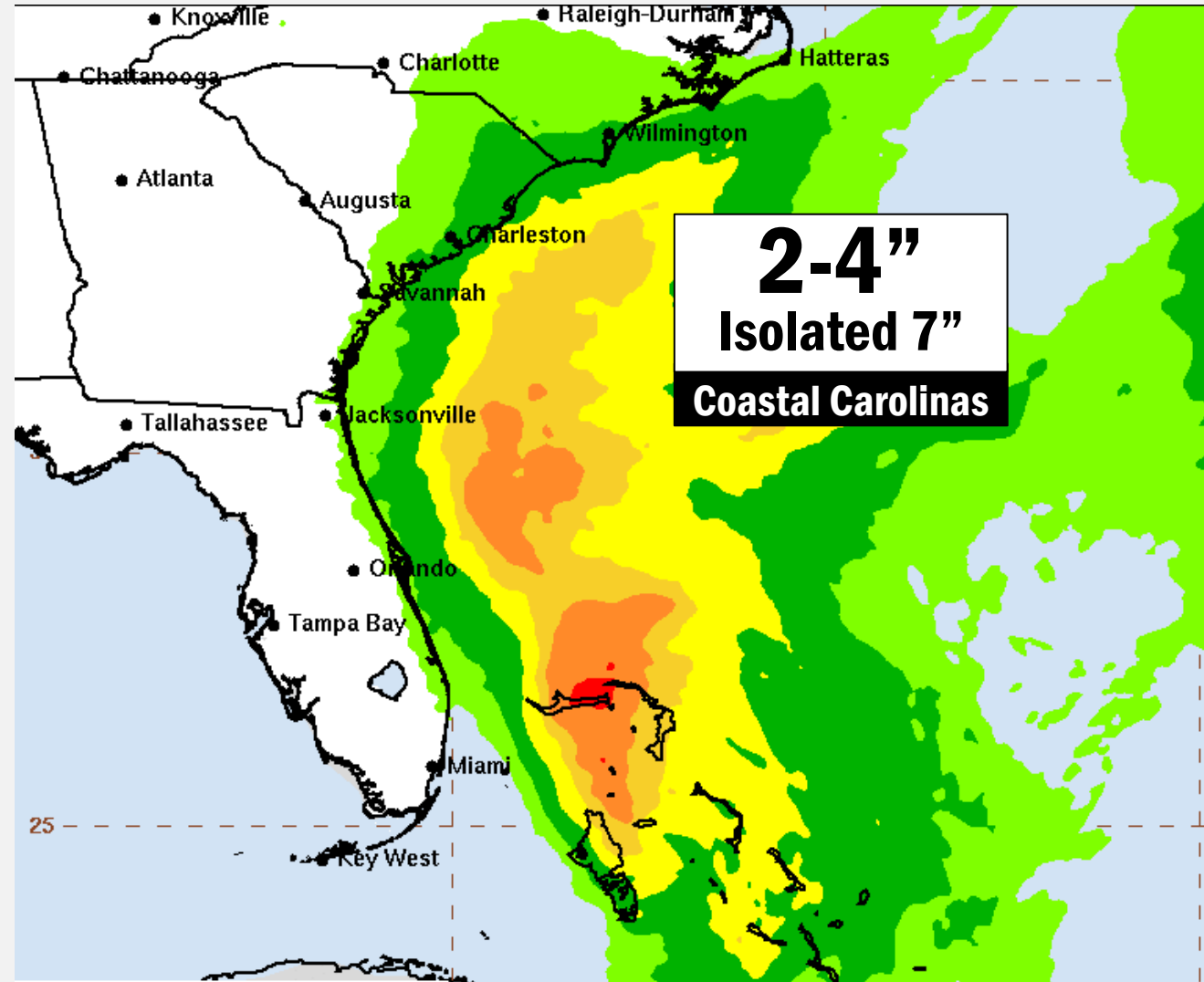
# Tropical Depression Nine

## MOST LIKELY ARRIVAL OF TS WINDS



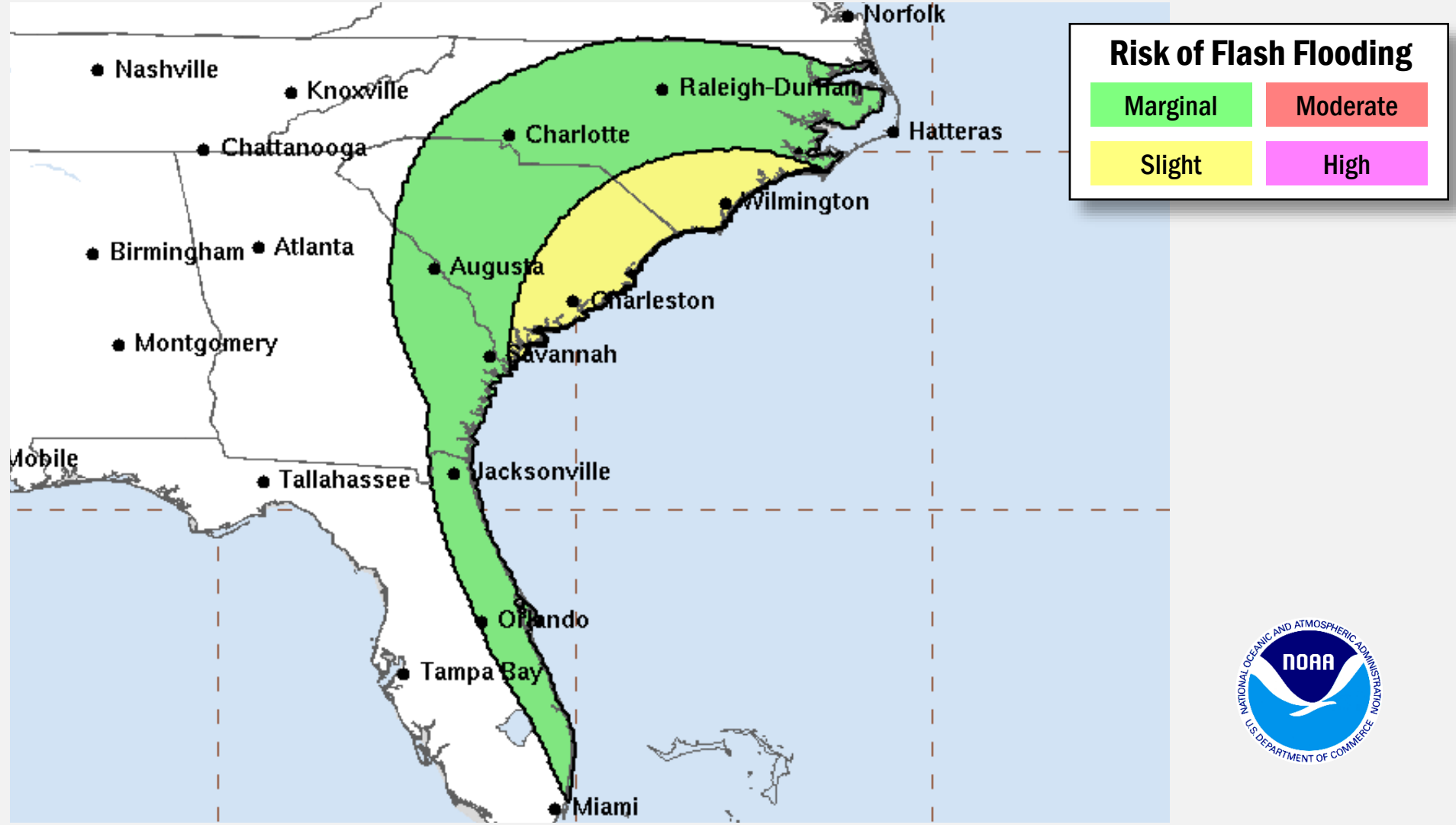
# Tropical Depression Nine

## 3 DAY RAINFALL



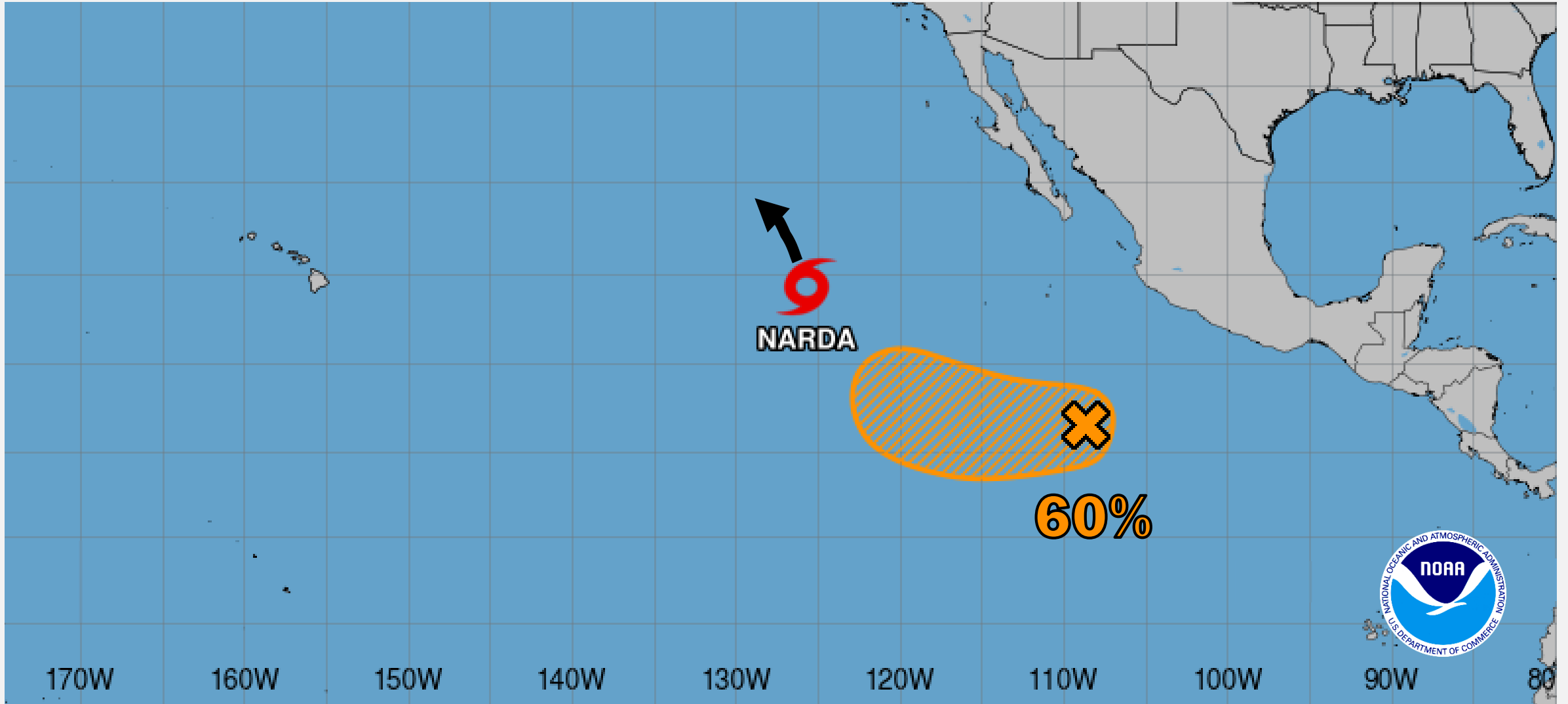
# Tropical Depression Nine

## MAX FLASH FLOOD RISK SUN-TUE



# Central and East Pacific Overview

## TROPICAL OUTLOOK



# Tropical Depression 9 (TD9) – Southeast and Mid-Atlantic

**Situation:** TD9 is forecast to become a tropical storm later today and a hurricane by late Monday or Tuesday. Tropical storm conditions are possible in the watch area along the east coast of Florida on Monday. Storm total rainfall amounts of 2 to 4 inches with local maxima of 7 inches are expected into Wednesday morning across portions of the coastal Carolinas. This rainfall could result in flash, urban, and river flooding. (NHC, as of 5:00 a.m. ET). FEMA HQ, Region 3, Region 4, and interagency partners are coordinating preparations for any potential impacts from TD9.



## **Lifeline Impacts:** (Tropical Depression Nine NRCC SLB Sep 28 6:00 p.m. ET)

### **Safety & Security:**

- FEMA Region 4:
  - NC/SC: Law Enforcement Strike Teams (LESTs) scheduled to be in place to support US&R teams at 4:00 p.m. ET on Sep 28
  - NC: State Search and Rescue (SAR) teams are holding at home stations for potential statewide impacts

### **Food, Hydration, Shelter:**

- FEMA Region 3:
  - VA:
    - Red Cross assembling 5 teams to support shelter operations
    - USDA pre-staging teams on standby to address veterinary issues and support feeding supply chain operations
    - 400k meals, 650k liters of water, 30 pack of generators, and 15 shuttle trucks enroute to FSA Fort AP Hill, VA and DC Greencastle, PA, Sep 28

### **Food, Hydration, Shelter: (cont.)**

- FEMA Region 4:
  - GA: 1.6M meals, 1.9M liters of water, and 90 generators expected delivery to Robins AFB, GA starting today, Sep 28
  - NC: Red Cross assembling 19 shelter teams; State-operated shelters in Fayetteville and Warren County identified to support potential needs
  - SC: 8 shelters on stand-by; Red Cross assembling 11 shelter teams

### **Communications:**

- FEMA Region 4:
  - GA: 2 Mobile Communications Office Vehicles (MCOVs) requested to arrive in Warner Robins, GA Sep 28

### **Transportation:**

- FEMA Region 4:
  - GA: Savannah & Brunswick at condition WHISKEY (partial closure); other ports open
  - NC: All ports remain open with major ports at condition WHISKEY
  - SC: Sector Charleston ports are conditions WHISKEY



# FEMA

# Tropical Depression 9 (TD9) – Southeast and Mid-Atlantic

## State / Local Response:

### FEMA Region 3:

- VA EOC at Increased Readiness/Monitoring (TD9)

### FEMA Region 4:

- NC SEOC is Monitoring (TD9)
  - The Governor of NC declared a State of Emergency
- GA SEOC at Full Activation (TD9)
- SC SEOC at Partial Activation (TD9)
  - The Governor of SC declared a State of Emergency; EM requested Sep 27

## FEMA / Federal Response:

### FEMA Region 3:

- RRCC activated to Level 3 (TD9)
- R3 IMAT deployed to Richmond, VA

### FEMA Region 4:

- RRCC activated to Level 2 (TD9)
- Regional Hurricane Program Manager deployed to NHC
- IMAT-1 deployed to Columbia, SC; IMAT-2 deployed to Durham, NC
- FITs deployed to NC/SC/GA SEOCs

### HQ:

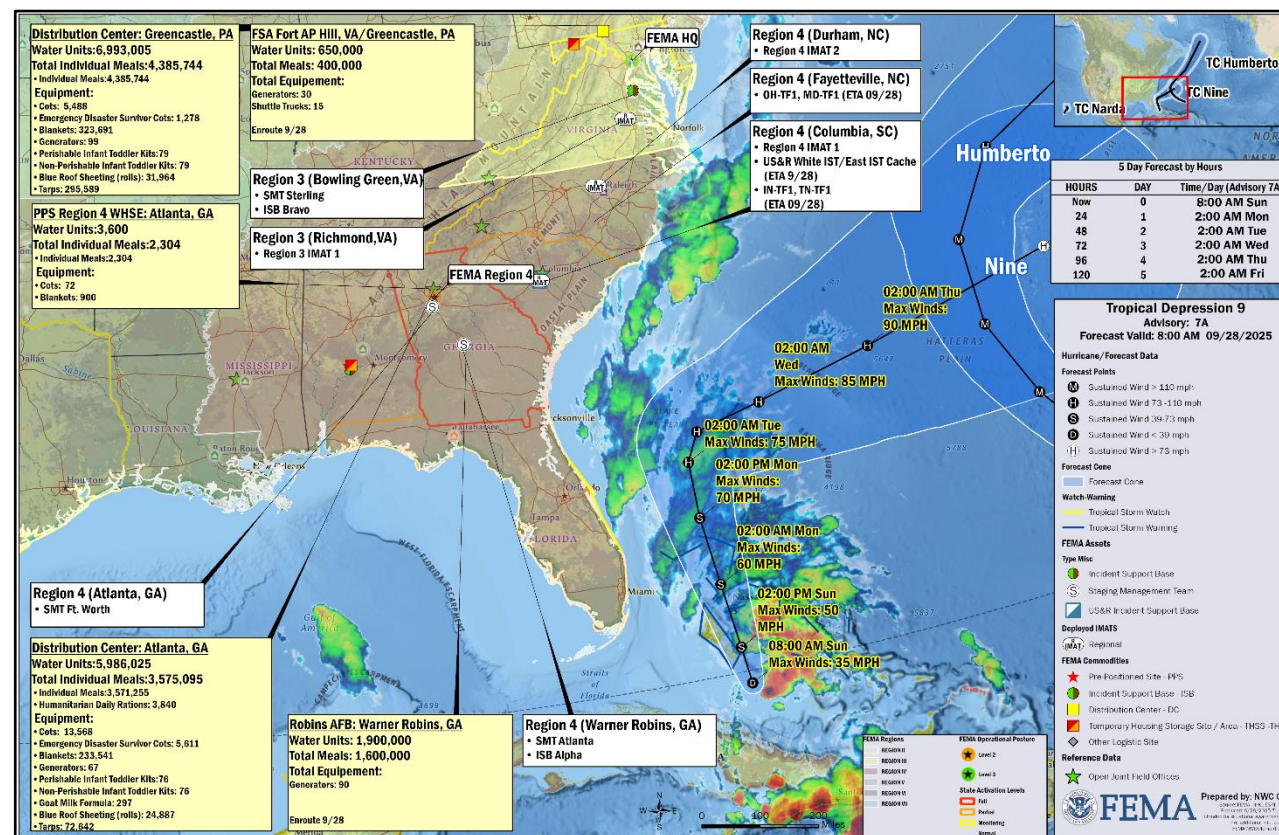
- NWC is Monitoring 24/7; NRCC activated to Level 3 (TD9)

### US&R:

- White Incident Support Team (IST), East IST Cache, IN-TF1, and TN-TF1 will deploy to Columbia, SC (ETA Sep 28)
- OH-TF1 and MD-TF1 will deploy to Fayetteville, NC (ETA Sep 28)

### Logistics:

- SMT Sterling, ISB Bravo deployed to Bowling Green, VA
- SMT Atlanta, ISB Alpha deployed to Robins, GA
- SMT Ft. Worth deployed to Atlanta, GA
- USACE generator install teams alerted



The National Watch Center will continue to monitor in coordination with FEMA Regions 3 and 4, with continued reporting in the National Situation Report (5:00 p.m. ET/3:00 a.m. ET) and the Daily Operations Briefing (8:30 a.m. ET).



FEMA

# Flash Flooding – Arizona

**Situation:** Maricopa, Gila, and Pinal Counties, AZ (including Globe, Miami, and San Carlos areas) experienced a catastrophic flood event Friday night into Saturday morning due to monsoonal moisture patterns. This event has resulted in mass evacuations, hazardous propane releases, road closures, and requests for additional resources. Life safety and hazardous material stabilization remain the top priorities. (Region 9 RA, as of 11:50 p.m. ET)

**Lifeline Impacts:** (Region 9 RA, as of 11:50 p.m. ET)

**Safety and Security:**

- Local swift water rescue crews are operating in the area; US&R operations were halted during the afternoon of Sep 27 due to rainfall (City of Globe, as of 7:00 p.m. ET)
- Evacuations are underway with approximately 6k-12k people in low-lying areas affected
- US&R observed vehicles in Pinal Creek; no confirmed victims

**Food, Hydration, Shelter:** (Red Cross, as of 6:52 a.m. ET)

- 2 shelters open with a total population of 1

**Health & Medical:**

- Open sources indicate that 4 deaths have been reported in Gila County, AZ (Open source, as of 7:00 a.m. ET)

**Communications:**

- Dispatch overloaded; FirstNet/cell intermittent; 911 operational with some gaps

**Transportation:**

- Closure of US-60, the main highway through Globe, AZ, is impeding movement between the east and west side of Globe; will require stabilization and potential hazmat remediation to reopen. (City of Globe, as of 7:00 p.m. ET)
- Arizona DOT will clear routes as waters recede

**Hazardous Materials:**

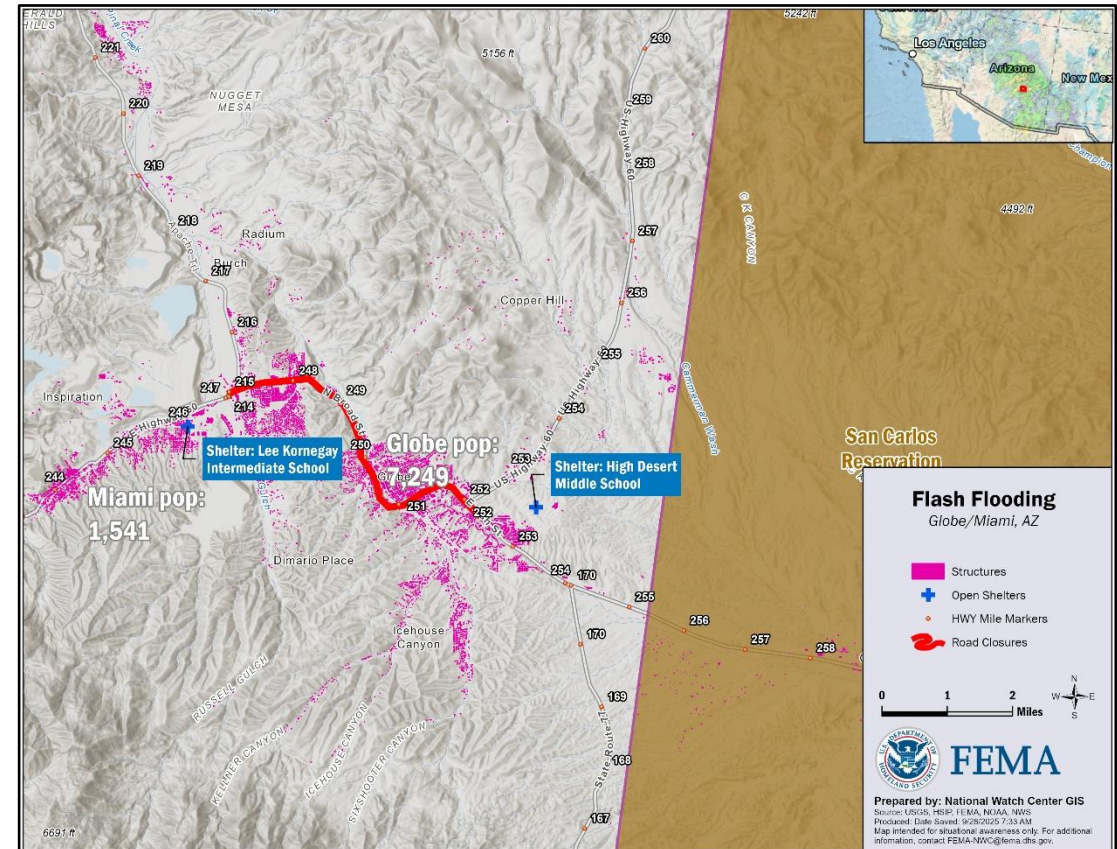
- Approximately 1,000 propane canisters washed downstream; local utilities assessing the tanks (NWS, as of 4:35 p.m. ET)

**State/Local Response:**

- AZ SEOC at Full Activation (Flooding/Wildfire Preparedness)
- Type 3 State Incident Command Team is responding (City of Globe, as of 7:00 p.m. ET)
- Gila County, the San Carlos Apache Tribe (SCAT), and the State of Arizona are all intending to declare a state of emergency

**Federal Response:**

- FEMA Region 9 RWC is Monitoring; RRCC is Rostered; IMAT-1 deployed (FEMA-4856-DR-CA; IMAT-2 is deployed to AZ SEOC with ESFs 3, 9, and 10; LNO is activated at AZ SEOC
- Region 9 External Affairs is coordinating with, and amplifying messaging from, State and local Public Information Officers (PIOs)



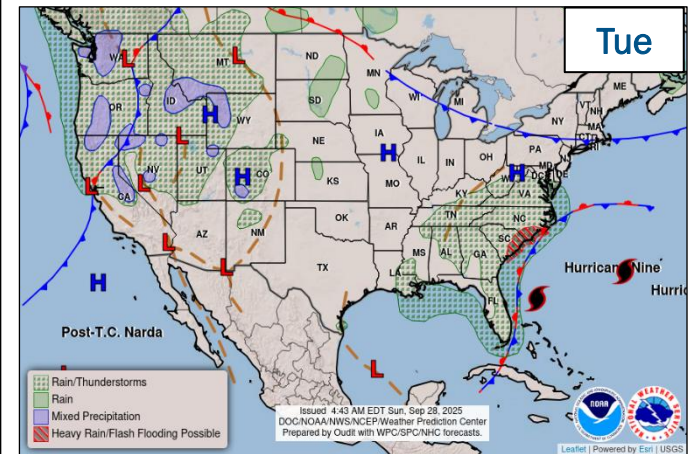
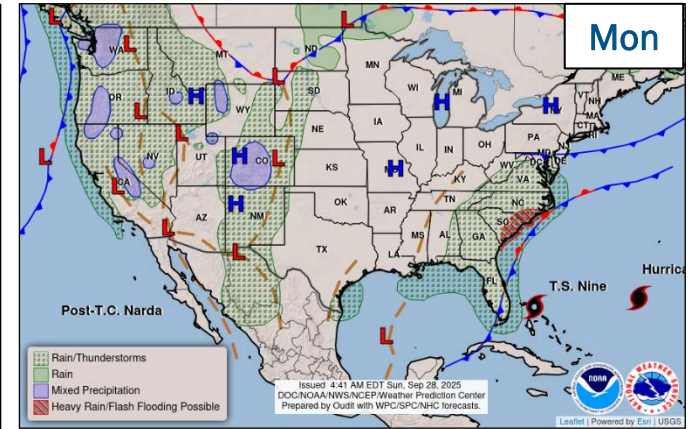
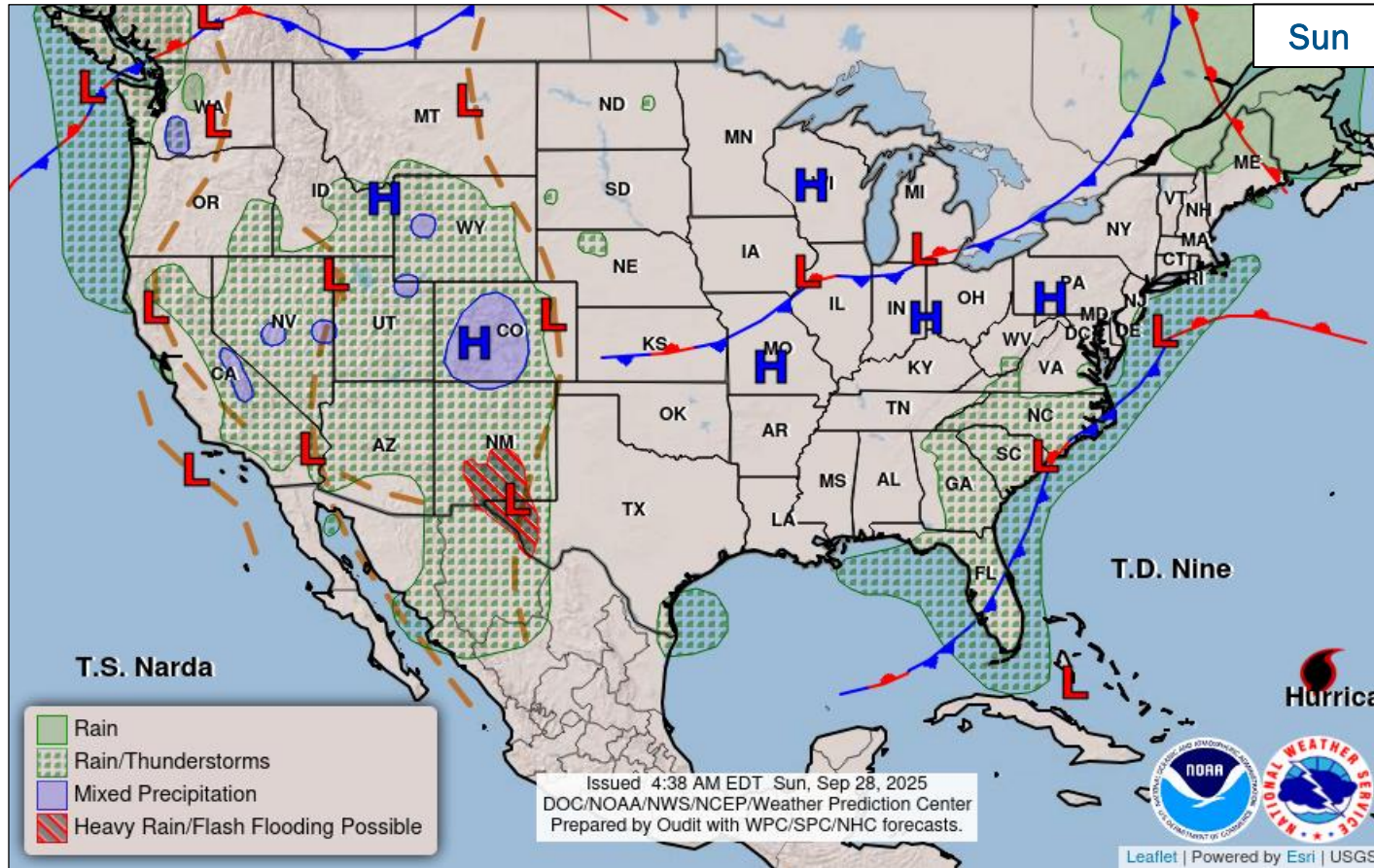
The National Watch Center will continue to monitor in coordination with FEMA Region 9; the next update will be included in the 5:00 p.m. ET National Situation Report.



**FEMA**

National Watch Center

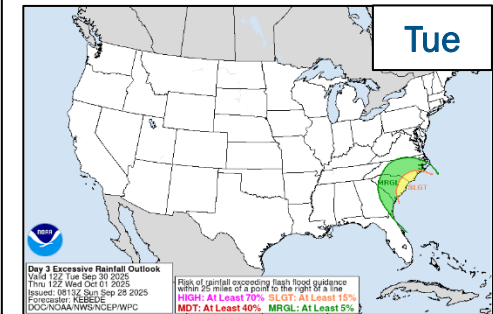
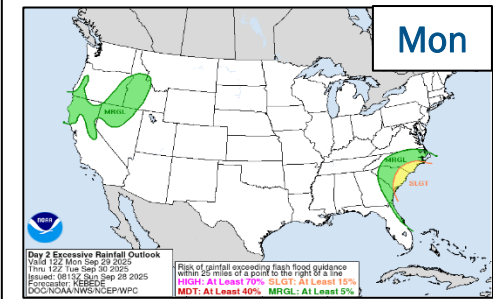
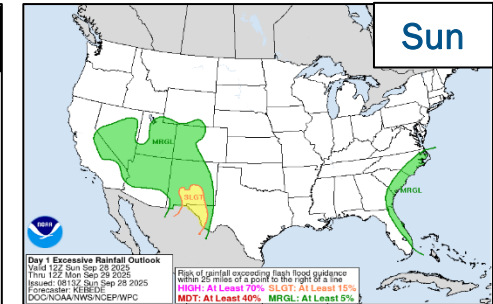
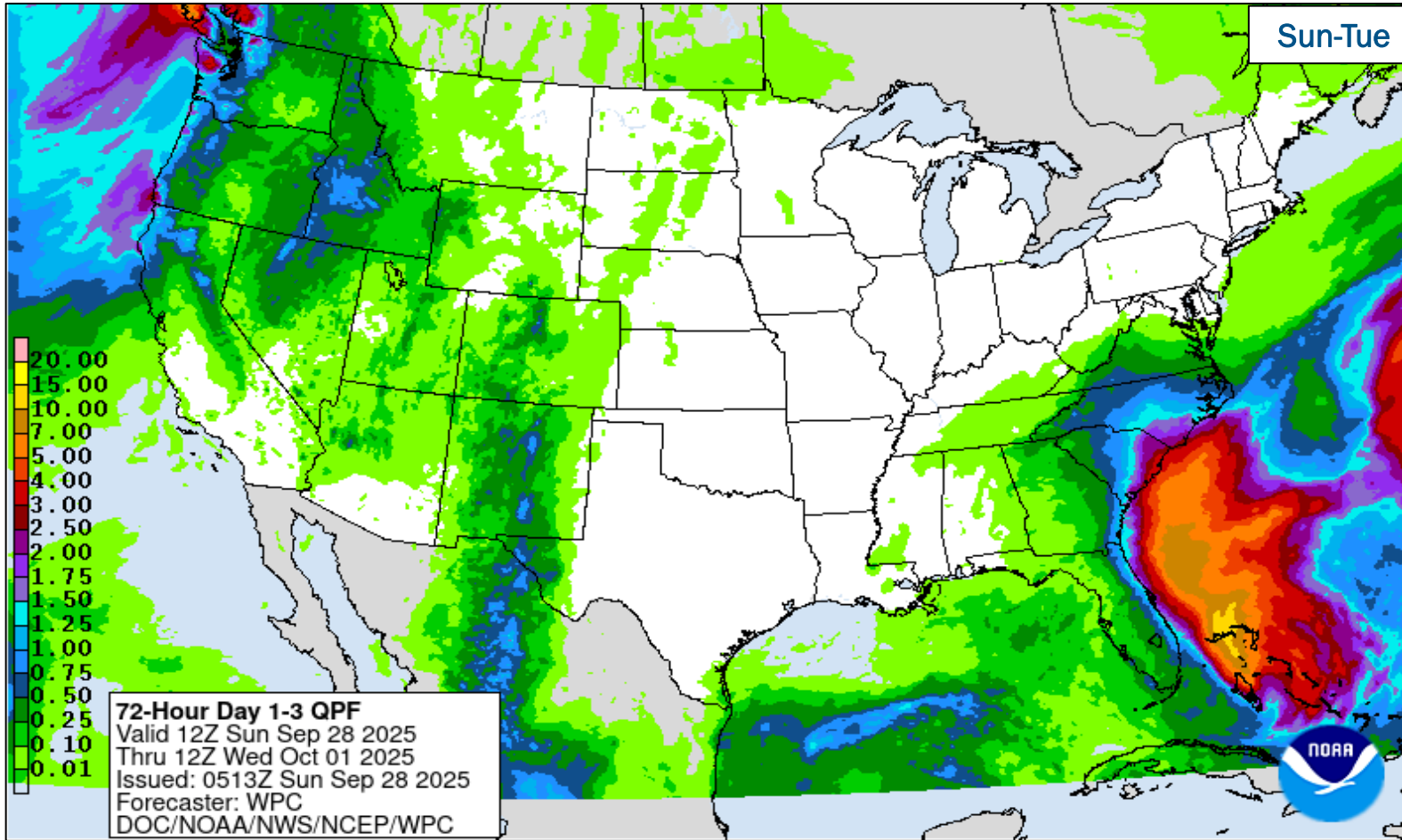
# National Weather Forecast



FEMA

National Watch Center

# Precipitation & Excessive Rainfall



**FEMA**

National Watch Center

# FEMA Common Operating Picture

**16** Joint Field Offices    **58** + **7** Supporting Major Disasters    **10** Direct Housing Missions    **7** RSF-Supported Disasters    **6** Joint Recovery Offices

Sunday  
September 28, 2025  
8:30 a.m. ET

FEMA HQ	
NWC	NRCC
Monitoring	Level 3
FEMA REGIONS	
Watch	RRCC
Monitoring	R1 Rostered
Monitoring	R2 Rostered
Monitoring	R3 Level 3
Monitoring	R4 Level 2
Alt Location	R5 Rostered
Monitoring	R6 Rostered
Monitoring	R7 Rostered
Monitoring	R8 Rostered
Monitoring	R9 Rostered
Monitoring	R10 Rostered

N-IMATs	
2-5 Teams Available	
Red	
White	
Blue	
Gold	
HS	
R-IMATs	
4 - 6 Teams Available	
R1	2
R2	
R3	VA (Sep 27)
R4 (1)	SC (Sep 27)
R4 (2)	NC (Sep 27)
R5	WI (Sep 15)
R6 (1)	
R6 (2)	TX (Jul 6)
R7	1
R8	SD (Sep 22)
R9 (1)	CA (Jan 8)
R9 (2)	AZ (Sep 27)
R10	3

REGIONAL BREAKDOWN				
	JFO	DR	EM	JRO
R1	0	0	0	0
R2	0	0	0	2
R3	2	7	1	0
R4	7	21	5	1
R5	0	3	0	0
R6	4	9	1	3
R7	1	10	0	0
R8	1	4	0	0
R9	1	3	0	0
R10	0	1	0	0

**Notes:**

**NRCC/RWCs/RRCCs:**

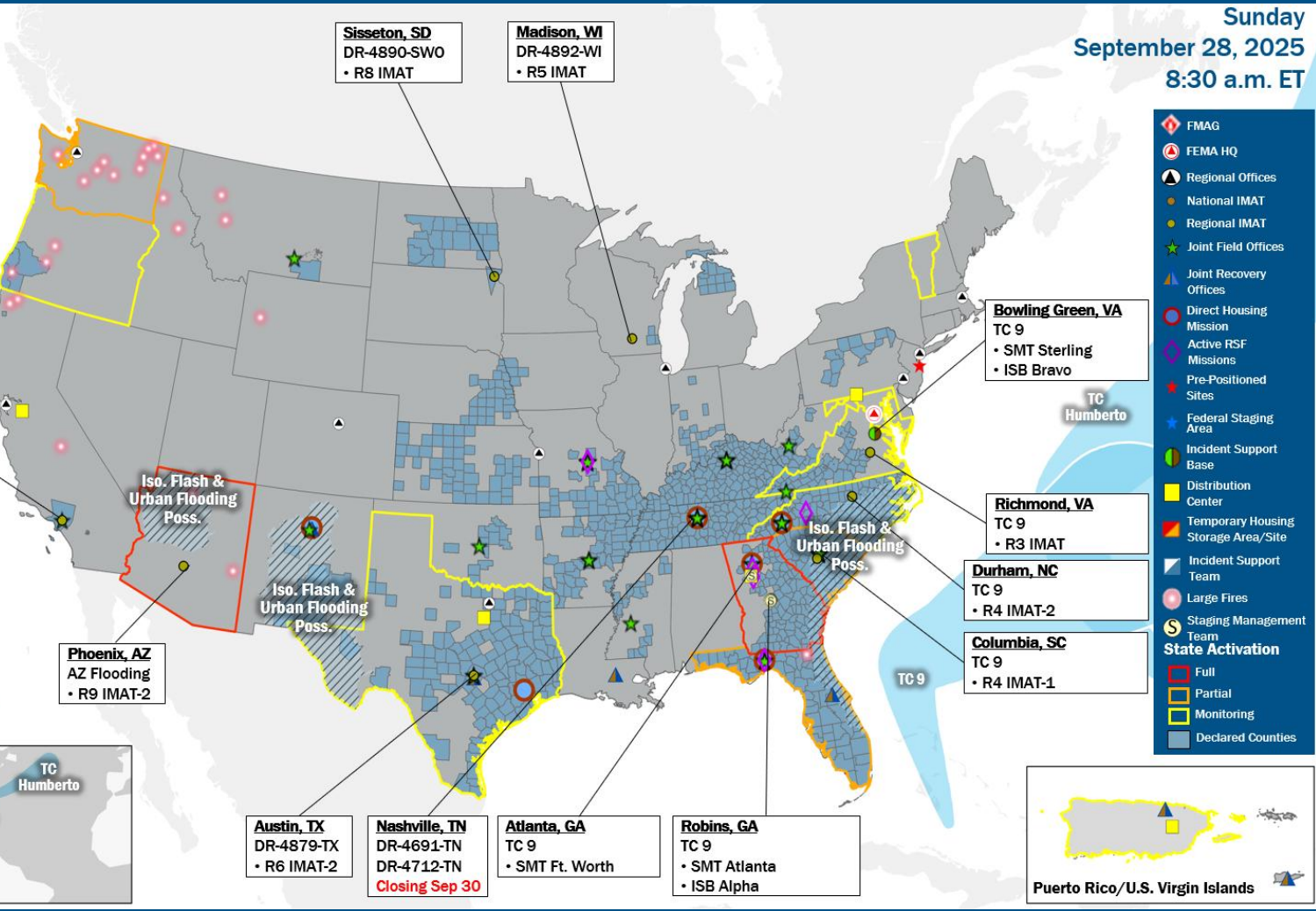
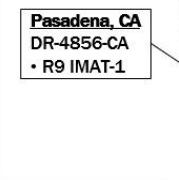
- NRCC/R3 RRCC/ R4 RRCC: TD9
- R5 Watch: IT maintenance; Staffing (Dayshift 7:00 a.m. - 7:00 p.m. ET)

**State EOCs:**

- AZ/HI/OR/WA: Wildfires
- FL: Previous Incidents
- MD/TX/AZ: Flooding
- VT: Drought
- PR: Tropical Activity
- NC/SC/VA/GA: TD9

Volunteer Force	
Rostered 6,809	Deployed 6
Surge Capacity Force	
Rostered 8,176	Deployed 0

Fully Mission Capable (FMC)  
Partially Mission Capable (PMC)  
Not Mission Capable (NMC)  
Deployed



- FMAG
- FEMA HQ
- Regional Offices
- National IMAT
- Regional IMAT
- Joint Field Offices
- Joint Recovery Offices
- Direct Housing Mission
- Active RSF Missions
- Pre-Positioned Sites
- Federal Staging Area
- Incident Support Base
- Distribution Center
- Temporary Housing Storage Area/Site
- Incident Support Team
- Large Fires
- Staging Management Team
- State Activation
- Full
- Partial
- Monitoring
- Declared Counties

## IM Workforce

11,844 Assigned  
4,147 (-11) Unavailable  
4,697 (-33) Deployed  
25% / 3,000 (+44) Available

## IM Cadre Availability

Alternative Dispute Resolution: 23% (7/31); Civil Rights: 13% (13/101); Disaster Field Training Operations: 21% (15/70); External Affairs: 15% (48/320); Environmental Planning and Historic Preservation: 8% (54/685); Field Leadership: 9% (11/122); Financial Management: 22% (41/185); Hazard Mitigation: 13% (107/794); Human Resources: 18% (30/165); Operations: 20% (73/359); Public Assistance: 16% (328/2,082); Planning: 12% (42/361); Safety: 14% (13/91); Security: 8% (9/112)

14 Cadres ≤ 25% Availability

**MERS**  
≥ 66%  
36 Assigned  
6 Unavailable  
0 Deployed  
30 Available

**US&R**  
≥ 66%  
28 Assigned  
1 Unavailable  
0 Deployed  
27 Available

**FCO**  
≤ 1 Type I  
40 Assigned  
3 Unavailable  
35 (21 FCO) Deployed  
2 Available

# Declaration Request – South Carolina

**Declaration Type:** Emergency Declaration – SC

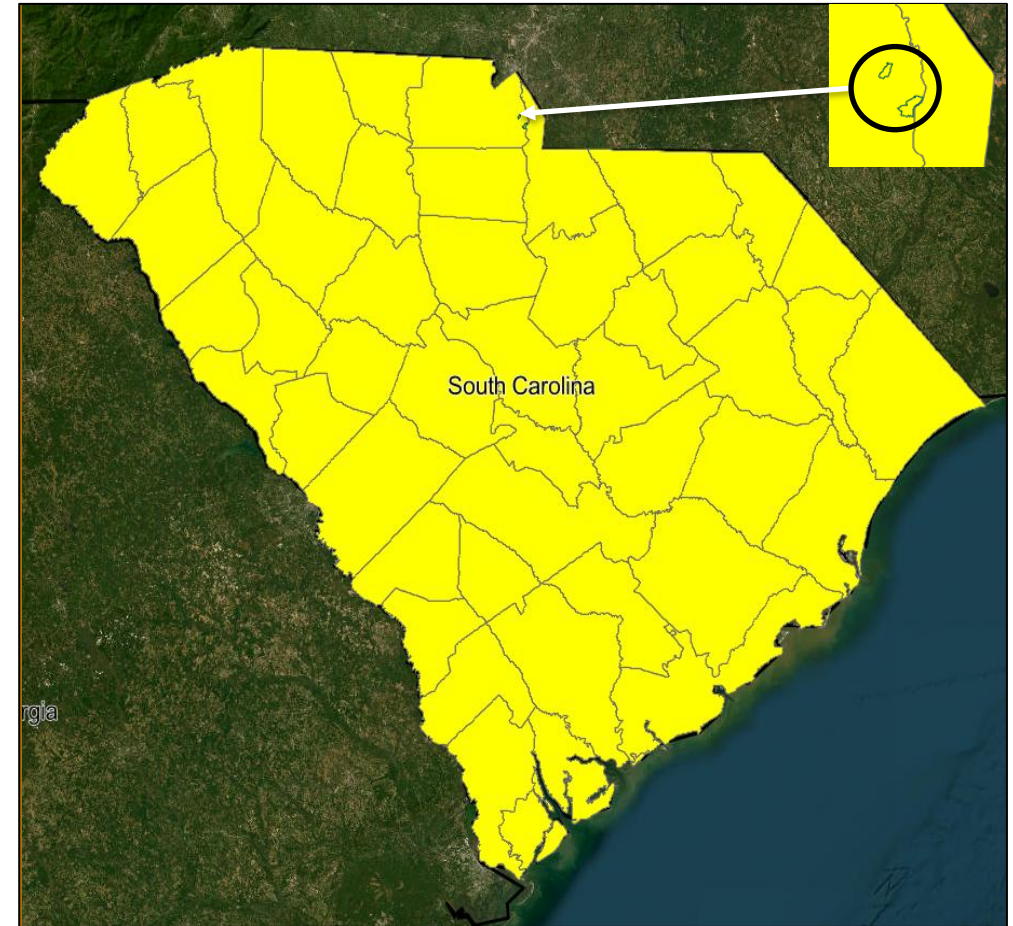
**Date Requested:** Sep 27

**Incident:** Tropical Depression Nine

**Incident Period:** Sep 27 and continuing

**Requested:**

- **PA:** 46 counties and the Catawba Indian Nation



■ PA



**FEMA**

National Watch Center

# Declaration Requests in Process – 12

State / Tribe / Territory – Incident Description	Type	IA	PA	HM	Requested
MD – Severe Storm and Flooding (Appeal)	DR		X	X	Aug 19
OK – Severe Storms, Tornadoes, Straight-line Winds, and Flooding (Appeal)	DR		X	X	Aug 19
LLBO* – Severe Storm and Straight-line Winds	DR	X	X	X	Aug 19
IL – Severe Storms and Flooding	DR	X		X	Aug 21
VT – Severe Storm and Flooding	DR		X	X	Aug 22
AK – Chevak Public Safety Building Fire	DR		X	X	Aug 28
ND – Severe Storms, Straight-line Winds, and Tornadoes	DR		X	X	Sep 4
NE – Severe Storms, Straight-line Winds, and Flooding	DR		X	X	Sep 4
IL – Severe Storms and Flooding	DR	X		X	Sep 15
KS – Severe Storms, Straight-line Winds, Tornadoes, and Flooding	DR		X	X	Sep 17
RST** – Severe Storm, Straight-line Winds, and Tornado (Appeal)	DR	X	X	X	Sep 18
SC – Tropical Depression Nine	EM		X		Sep 27

\* Leech Lake Band of Ojibwe

\*\* Rosebud Sioux Tribe



**FEMA**

National Watch Center



# FEMA

Helping people before, during, and after disasters.



*Scan to subscribe to this briefing.*