



FEMA

Daily Operations Briefing

Monday, September 28, 2020

8:30 a.m. ET

National Current Operations and Monitoring



FEMA

Significant Incidents or Threats:

- Critical Fire Weather – California
- Wildfires – Western U.S.
- COVID-19

Tropical Activity:

- Atlantic:
 - Disturbance 1: Low (30%)
- Eastern Pacific:
 - Disturbance 1: High (90%)
- Central Pacific: No new tropical cyclones expected during the next five days
- Western Pacific: No activity affecting U.S. interests

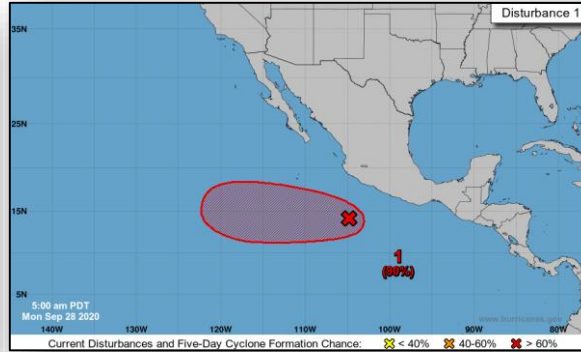
Declaration Activity:

- 2 FMAG Approvals

Tropical Outlook – Five Day



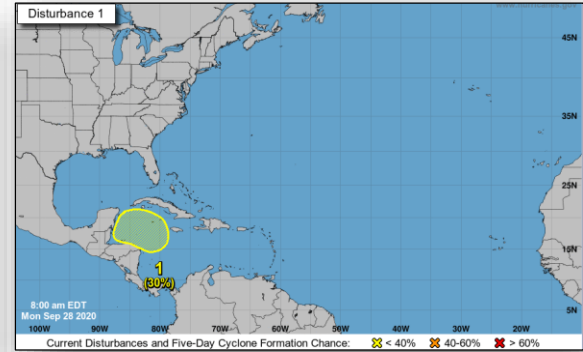
Central Pacific



Eastern Pacific

Disturbance 1 (as of 8:00 a.m. ET)

- Few hundred miles south of the southwestern coast of Mexico
- Tropical depression likely within next two or three days
- 48-hour Formation Chance: Medium (70%)
- 5-day Formation Chance: High (90%)



Atlantic

Disturbance 1 (as of 8:00 a.m. ET)

- Could form over the western Caribbean Sea
- Some gradual development is possible
- 48-hour Formation Chance: Low (near 0%)
- 5-day Formation Chance: Low (30%)

Mullen Fire— WY



FEMA

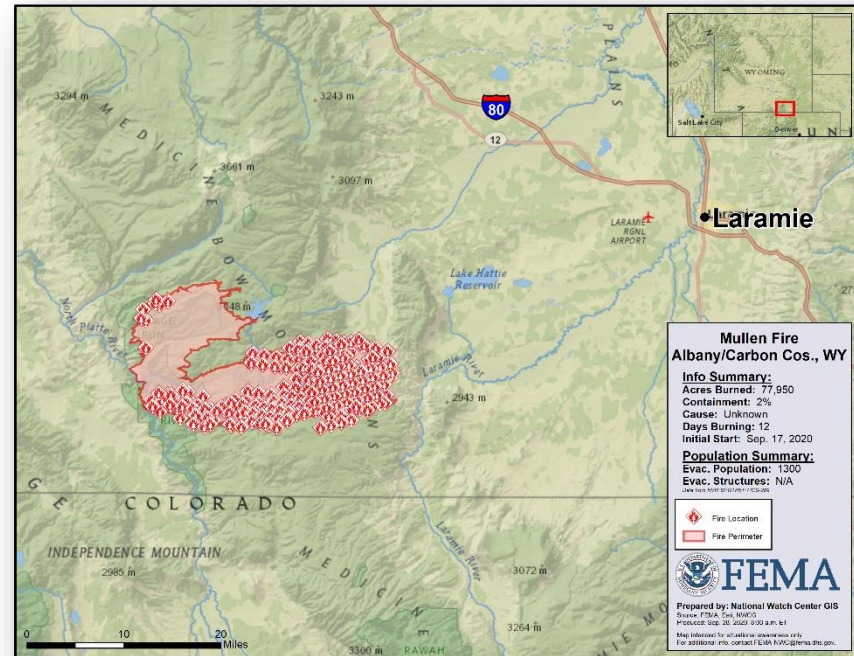
Fire Name (County, ST)	FMAG #	Acres Burned	Percent Contained	Evacuations	Structures (Homes / Other)			Fatalities / Injuries
					Threatened	Damaged	Destroyed	
Mullen (Albany and Carbon, WY)	5375-FM-WY	77,950	2%	M: 1,300 V: 0	H: 300 O: 0	H: 0 O: 0	H: 0 O: 0	0 / 0

Current Situation:

- The fire began on Sep 17 and is burning on Federal and private land in and around the subdivisions of Albany, Jelm, Keystone, Rambler, Woods Landing, and Double Creek, WY (pop. 249)
- Threatening 300 homes, utilities, and a watershed

Response:

- WY EOC at Partial Activation (Wildfires & COVID-19)
- Region VIII and NWC continue to monitor
- FMAG approved Sep 26



Glass Fire – CA



FEMA

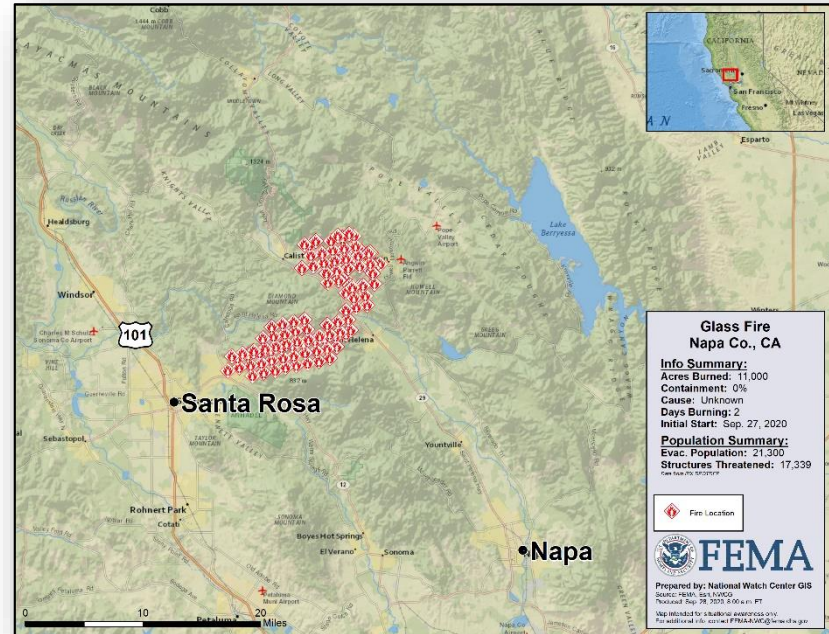
Fire Name (County, ST)	FMAG #	Acres Burned	Percent Contained	Evacuations	Structures (Homes / Other)			Fatalities / Injuries
					Threatened	Damaged	Destroyed	
Glass (Napa, CA)	5376-FM-CA	1,800	0%	M: 5,282 V: 0	H: 2,168 O: 100	H: 0 O: 0	H: 0 O: 0	0 / 0

Current Situation:

- The fire began on Sep 27 and has burned in excess of 1,800 acres of State and Private land
- The fire was threatening approximately 2,168 homes in and around the communities of Deer Park, Angwin, Calistoga, and St. Helena, CA, (pop 16,500). 80% percent of the threatened homes are primary residences and 20% are secondary residences
- The fire is also threatening Adventist Health St. Helena Hospital, Bell Canyon Reservoir and water treatment facility, Pacific Union College, Angwin Airport, 2x Fire stations (Deer Park and Angwin), and a PG&E substation and transmission lines that service Calistoga

Response:

- CA EOC at Full Activation (COVID-19)
- Region IX and NWC continue to monitor
- FMAG approved Sep 27



Wildfires – Western US



Situation: Of the over 7 million acres burned, the National Watch Center continues to track 14 (+2) active fires that have burned over 2 million acres from the West Coast to the Rocky Mountains. Mandatory evacuations continue throughout the impacted regions. Current U.S. Air Quality Index ranges from "Moderate" to Very Unhealthy" for Central California to northern Washington state. No reported unmet needs.

FEMA Region VIII: FMAGs (1 - CO, 1 - WY)

- Acreage burned (FMAGs only): 201,976 (+12,587)
- Homes / structures threatened: 3,881 / 0
- Homes / structures damaged: 0 / 0
- Homes / structures destroyed: 28 / 29
- Fatalities / Injuries: 0 / 18

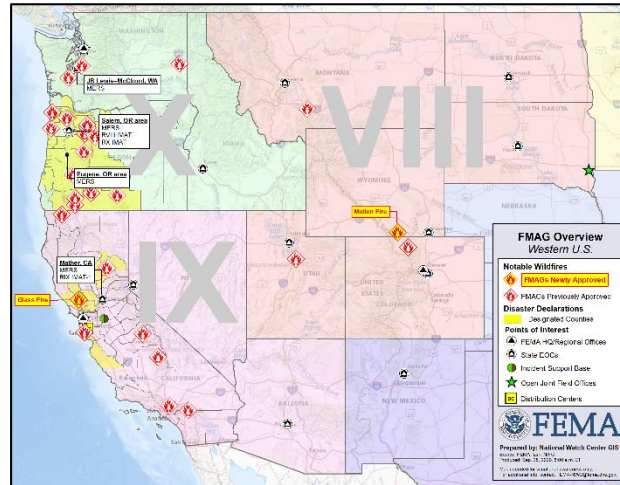
Evacuations: 7,564 (+10)

FEMA Region IX: 7 (+1) FMAGs (CA)

- Acreage burned (FMAGs only): 1,028,329 (+12,798)
- Homes / structures threatened: 24,743 (+2,171) / 286 (+100)
- Homes / structures damaged: 147 (+1) / 117 (-48)
- Homes / structures destroyed: 2,551 (+25) / 1,511 (+13)
- Fatalities / Injuries: 18 / 58 (-11)
- Evacuations: 15,112 (+4,253)

FEMA Region X: 5 (+2) FMAGs (OR)

- Acreage burned (FMAGs only): 839,843
- Homes / structures threatened: 12,835 / 109
- Home / structures damaged: 155 / 166
- Homes / structures destroyed: 1,348 / 1,275
- Fatalities / Injuries: 7 / 30
- Evacuations: 4,098



State Response

- CA, OR, & WA EOCs at Full Activation (COVID-19 & Wildfires)

Federal Response

- Declarations approved – 2 DRs
- Declarations requested – 1 DR
- Region IX RWC monitoring
 - IMAT deployed to CA EOC (Wildfires)
- Region X RRCC at Level III (Wildfires & COVID-19)
 - IMAT deployed to OR EOC
 - ESF-13 activated; 1 IMT (Eugene) and 2 QRTs deployed to OR (Medford & Eugene)
- Public Health Emergency declared in OR
- EPA conducting Rapid Needs Assessments for 2 counties in CA
- MERS: Mather, CA; Salem, OR (x 2); McKenzie River Outreach Site, OR; Joint Base Lewis–McChord, WA

Wildfire Summary – CA



FEMA

Fire Name (County, ST)	FMAG #	Acres Burned	Percent Contained	Evacuations	Structures (Homes / Other)			Fatalities / Injuries
					Threatened	Damaged	Destroyed	
California (7)								
Creek (Fresno and Madera, CA)	5348-FM-CA	302,870 (+10,040)	39%	M: 2,408 (-1,029) V: 0	H: 4,576 O: 0	H: 44 O: 27	H: 566 O: 289	0 / 21
El Dorado - FINAL (San Bernardino, CA)	5350-FM-CA	22,666	92%	M: 0 (-3,467) V: 0	H: 225 O: 27	H: 4 O: 0	H: 5 O: 15	1 / 13
*Slater (Siskiyou, CA, Josephine, OR)	5361-FM-CA 5369-FM-OR	154,102 (+252)	38% (+6)	M: 200 V: 0	H: 1,698 O: 0	H: 10 (+9) O: 1	H: 202 O: 238	2 / 3
North Complex (& Bear Fire) (Butte, Plumas, and Yuba, CA)	5363-FM-CA (Bear Fire)	305,188 (+307)	78%	M: 2,260 V: 0	H: 10,000 O: 0	H: 51 (+1) O: 68	H: 1,523 (+15) O: 829 (+15)	15 / 0 (-11)
SQF Complex (Tulare, CA)	5373-FM-CA	150,266 (+378)	49% (+5)	M: 962 V: 0	H: 0 O: 0	H: 10 O: 2	H: 173 O: 59	0 / 15
Bobcat (Los Angeles, CA)	5374-FM-CA	114,103 (+21)	65% (+2)	M: 4,000 V: 0	H: 6,076 O: 159	H: 28 O: 19	H: 82 (+10) O: 79 (-2)	0 / 6
Glass (Napa, CA)	5376-FM-CA	1,800	0%	M: 5,282 V: 0	H: 2,168 O: 100	H: 0 O: 0	H: 0 O: 0	0 / 0

*Note: Burning along the border of OR & CA – FMAGs approved for both states

(Evacuations: M = Mandatory / V = Voluntary; Structures: H = Homes and Mixed Commercial/Residential / O = Non-residential Commercial/Other Minor Structures)

Wildfire Summary – OR



FEMA

Fire Name (County, ST)	FMAG #	Acres Burned	Percent Contained	Evacuations	Structures (Homes / Other)			Fatalities / Injuries
					Threatened	Damaged	Destroyed	
Oregon (5)								
*Beachie Creek/Lionshead Complex (Marion, Clackamas, Linn, and Jefferson, OR)	5356-FM-OR	397,178	58% (+3) / 34% (+6)	M: 2,942	H: 9,437	H: 120	H: 750	5 / 16
				V: 0	O: 109	O: 110	O: 853	
Holiday Farm - FINAL (Lane, OR)	5357-FM-OR	173,094	50% (+15)	M: 0	H: 0 (-1,332)	H: 25	H: 431	1 / 6
				V: 0	O: 0 (-332)	O: 40	O: 337	
Archie Creek - FINAL (Douglas, OR)	5365-FM-OR	131,542 (-100)	67% (+8)	M: 0 (-1,077)	H: 471	H: 0	H: 111	1 / 5 (+1)
				V: 0	O: 0	O: 7	O: 2	
Riverside (Clackamas, OR)	5366-FM-OR	138,029	37% (+3)	M: 1,156	H: 2,927	H: 10	H: 56	0 / 3
				V: 0	O: 0	O: 9	O: 83	

* All numbers combined for this complex fire except for the containment percentage

(Evacuations: M = Mandatory / V = Voluntary; Structures: H = Homes and Mixed Commercial/Residential / O = Non-residential Commercial/Other Minor Structures)

Wildfire Summary – Region VIII

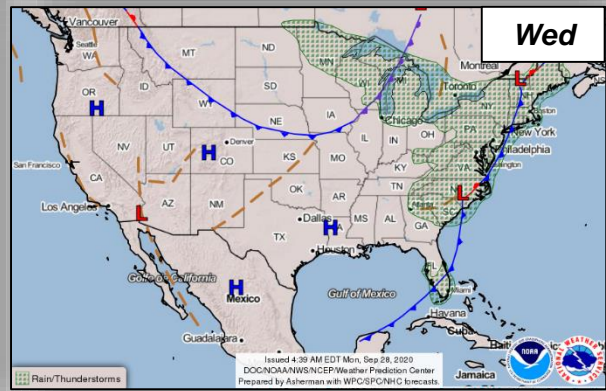
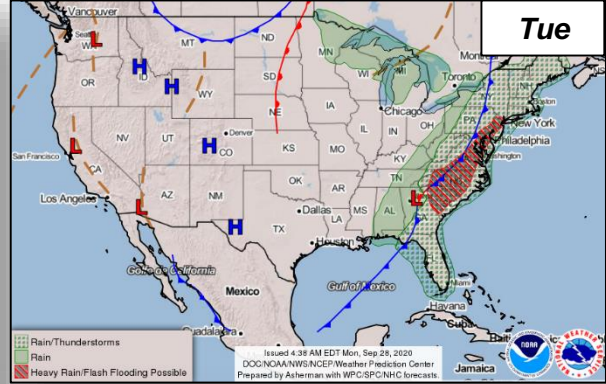
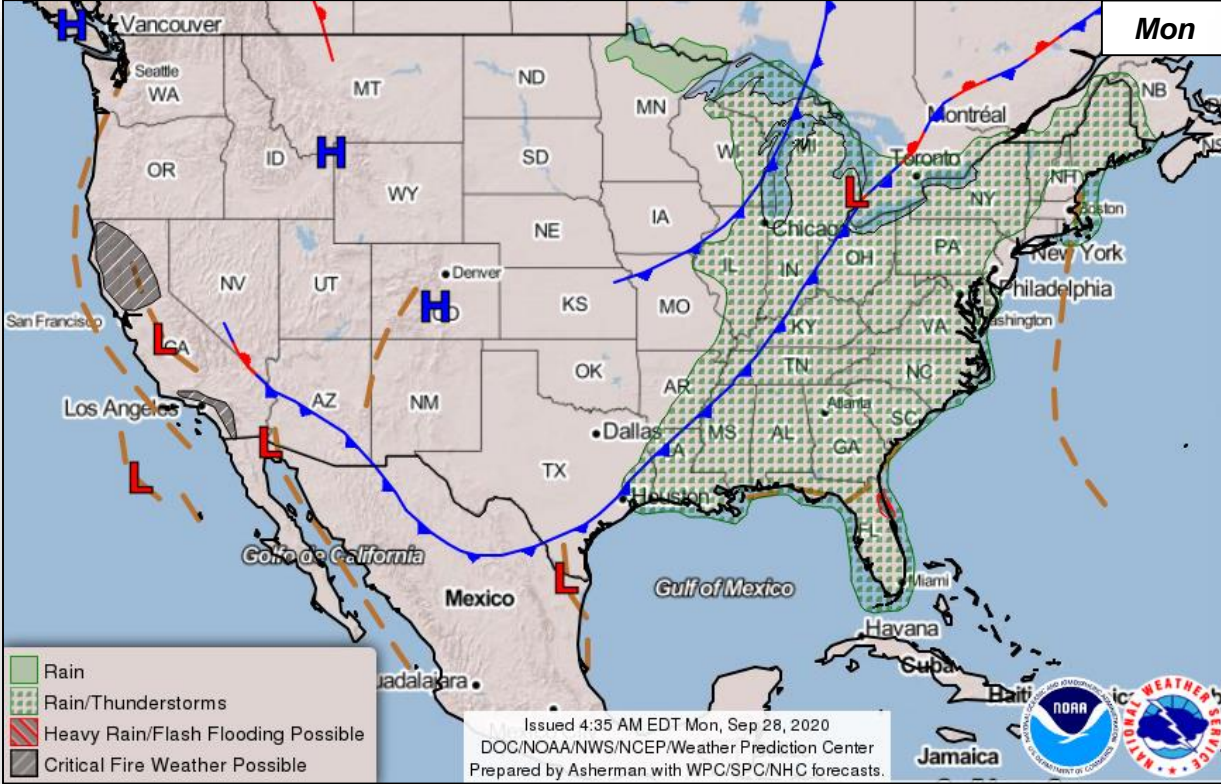


FEMA

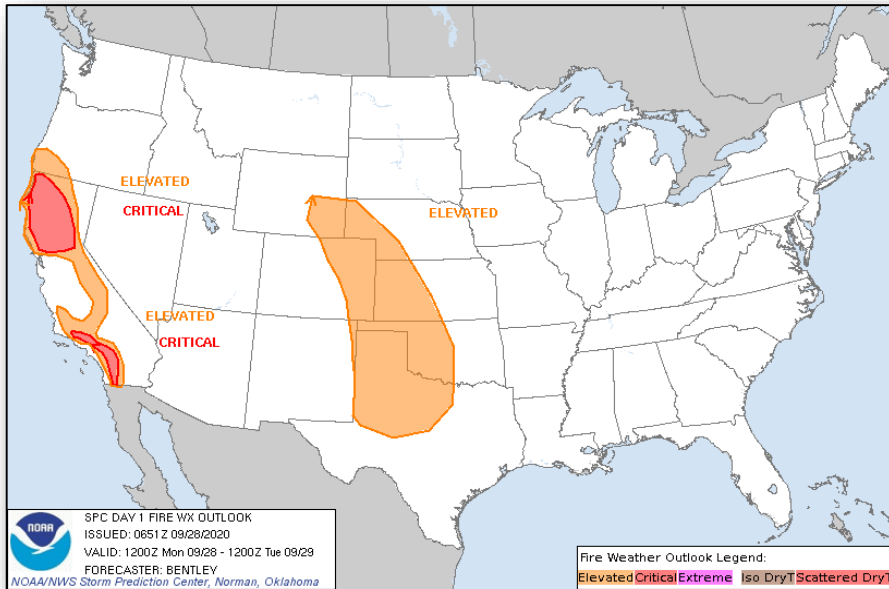
Fire Name (County, ST)	FMAG #	Acres Burned	Percent Contained	Evacuations	Structures (Homes / Other)			Fatalities / Injuries
					Threatened	Damaged	Destroyed	
Colorado (1)								
Cameron Peak (Larimer, CO)	5349-FM-CO	124,026 (+3,775)	21% (-4)	M: 5,888 (+2,116)	H: 3,581	H: 0	H: 28	0 / 18
				V: 376 (-2,126)	O: 0	O: 0	O: 29	
Wyoming (1)								
Mullen (Carbon/Albany, WY)	5375-FM-WY	77,950	2%	M: 1,300	H: 300	H: 0	H: 0	0 / 0
				V: 0	O: 0	O: 0	O: 0	

(Evacuations: M = Mandatory / V = Voluntary; Structures: H = Homes and Mixed Commercial/Residential / O = Non-residential Commercial/Other Minor Structures)

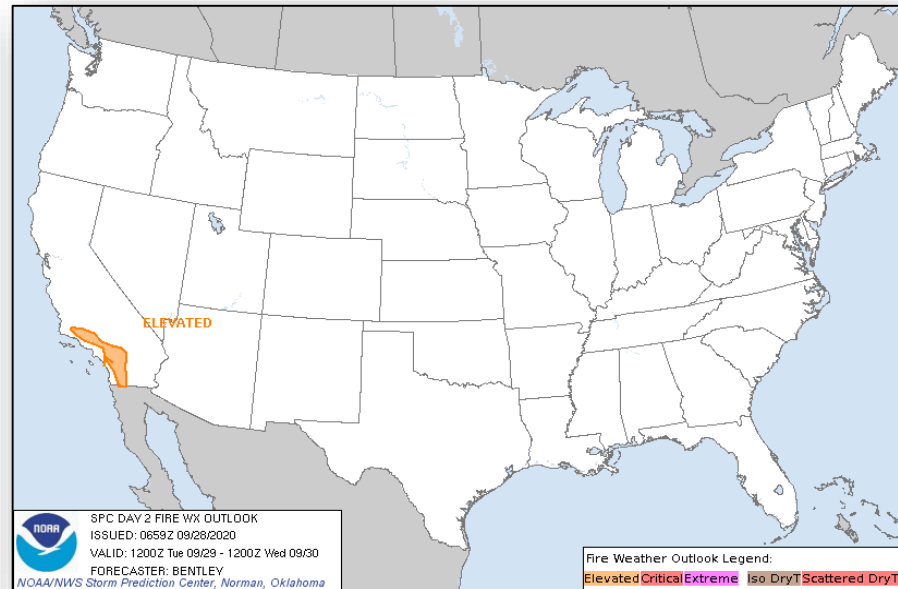
National Weather Forecast



Fire Weather Outlook



Today



Tomorrow

Joint Preliminary Damage Assessments



FEMA

Region	State / Location	Event	IA	Number of Counties		Start – End
			PA	Requested	Complete	
I	CT	Tropical Storm Isaias Aug 4	IA	8	8	8/27 – 9/16
			PA	8	7	8/27 – TBD
II	NY	Tropical Storm Isaias Aug 4	IA	0	0	N/A
			PA	8	3	8/25 – TBD
	PR	Thunderstorms Sep 13	IA	1	0	9/28 - TBD
			PA	0	0	TBD - TBD
III	DE	Tornado Aug 7	IA	0	0	N/A
			PA	1	0	8/29 – TBD
	MD	Tropical Storm Isaias Aug 4-5	IA	0	0	N/A
			PA	3	2	8/21 – TBD
	PA	Tropical Storm Isaias Aug 4-5	IA	9	2	8/26 – TBD
			PA	11	0	8/26 – TBD
VI	TX	Hurricane Hanna Jul 25 and continuing	IA	6	6	7/29 – 8/20
			PA	6	0	7/29 – TBD
		Hurricane Laura Aug 23 and continuing	IA	8	0	9/15 – TBD
			PA	10	0	9/2 – TBD
VIII	UT	High Winds Sep 8-9	IA	0	0	N/A
			PA	4	0	9/14 – 10/2
X	WA & CTRC*	Multiple Wildfires Sep 7 and continuing	IA	1	1	9/11 – 9/15
			PA	13	0	9/28 – TBD

* Confederated Tribes of the Colville Reservation

Declaration Requests in Process – 7



FEMA

State / Tribe / Territory – Incident Description	Type	IA	PA	HM	Requested
Poarch Band of Creek Indians – COVID-19 Pandemic	DR	X	X		5/15
DE – Tropical Storm Isaias	DR	X	X	X	8/31
ND – Severe Storms and Flooding	DR		X	X	8/31
NY – Tropical Storm Isaias	DR		X	X	9/3
MD – Tropical Storm Isaias	DR		X	X	9/3
WA – Wildfires and Straight-Line Winds	DR	X	X	X	9/16
NC – Hurricane Isaias	DR		X	X	9/23

FEMA Common Operating Picture



FEMA

FEMA HQ	
NWC	NRCC
Monitoring	Level III

FEMA REGIONS		
WATCH	RRCC	
Monitoring	I	Level III
Monitoring	II	Level III
Monitoring	III	Level III
Monitoring	IV	Rostered
Monitoring	V	Level III
Monitoring	VI	Level III
Alt. Location	VII	Rostered
Monitoring	VIII	Rostered
Monitoring	IX	Rostered
Monitoring	X	Level III

Notes:

NRCC/RRCCs: COVID-19

All state EOCs (except IL & SD) activated for COVID-19

CA, OR, WA: Wildfires
 IA: Derecho
 FL, AL: TC Sally
 LA: TC Laura & Beta
 UT: Flooding
 KY: Civil Unrest
 PR: Earthquake

Major Disasters (DR): 113
 Emergency Disasters (EM): 108
 JFOs: 10 / VJFOs: 18
 Staging Area

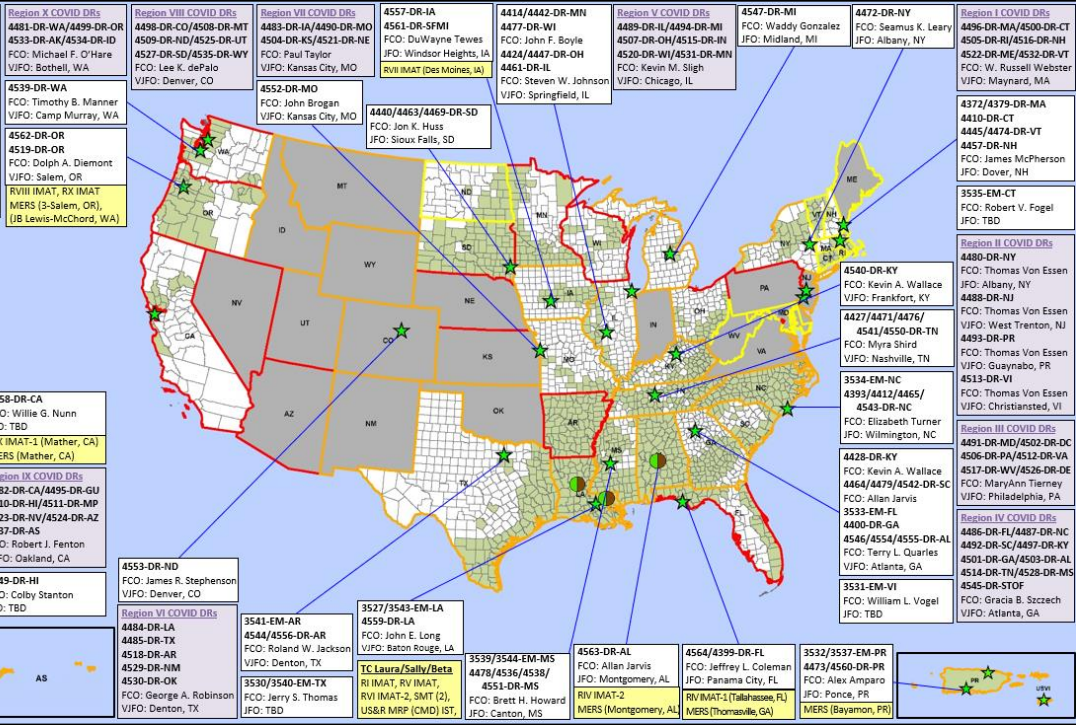
Declared County (non-COVID-19 Declarations)

Partially Activated

Fully Activated

Monitoring

As of 8:00 a.m. ET September 28, 2020
 Created by FEMA NWC



N-IMATs	
2-3 Team	
Red	Reconstituting
Blue	
Gold	

R-IMATs	
4-6 Teams	
I	LA
II	
III	
IV-1	FL
IV-2	AL
V	LA
VI-1	
VI-2	LA
VII	IA
VIII	OR
IX-1	CA
IX-2	
X	OR
FMC	PMC
NMC	Deployed

Team:	US&R	MERS	FCOs	FDRCs	IM WORKFORCE
Status	33-65%	> 66%	≤1 Type I	=2	
Assigned:	28	36	45	10	13,943
Unavailable:	10	0	0	0	3,236
Deployed:	0	4	40	8	6,748
Available:	18	32	5	2	3,932/ 28%

IM CADRE AVAILABILITY SUMMARY	
Cadres with 25% or Less Availability	
CVR 19% (15/81); DI 25% (17/67); EA 19% (87/464); EHP 23% (149/657); FL 12% (18/152); HM 22% (278/1,238); LOG 20% (267/1,339); OPS 10% (32/326); PA 19% (603/3,124); PLAN 24% (107/454); SAF 11% (6/55); SEC 25% (31/124)	



FEMA

FEMA's mission is helping people before, during, and after disasters.

Click [here](#) to subscribe to this briefing
[FEMA.GOV](https://www.fema.gov)