

FEMA National Watch Center

Daily Operations Briefing

Monday, September 16, 2024

8:30 a.m. ET



FEMA

National Current Ops / Monitoring

New Significant Incidents / Ongoing Ops

- No significant incidents / operations

Hazard Monitoring

- Excessive Rainfall / Flash Flooding – Southeast, Mid-Atlantic and Upper Mississippi Valley
- Severe Thunderstorms – Northern Plains
- Tropical Activity:
 - Atlantic:
 - Potential Tropical Cyclone Eight
 - Tropical Depression Gordon
 - Western Pacific:
 - Disturbance 1 (97W)

Disaster Declaration Activity

- No new declaration activity

Event Monitoring

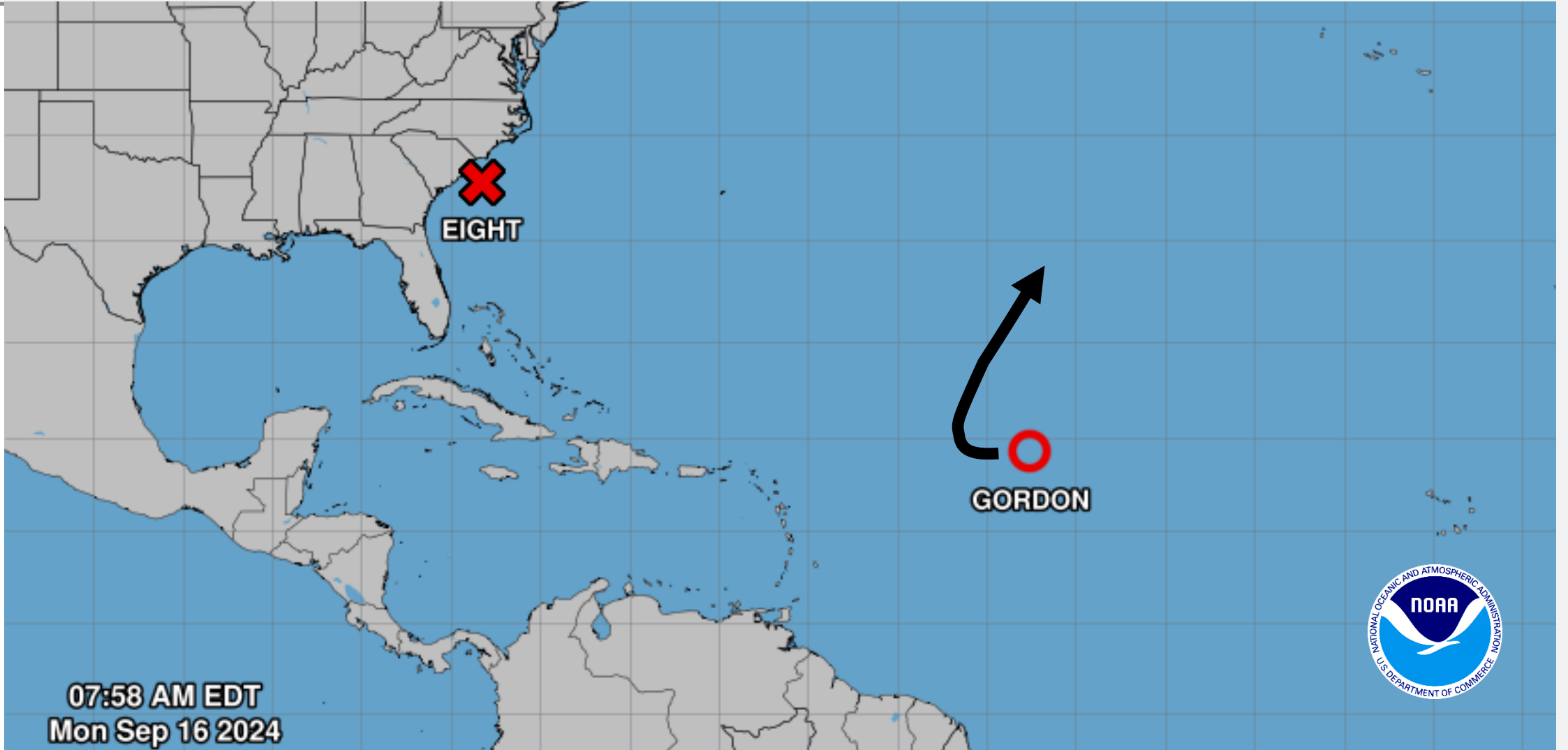
- No significant events



FEMA

Atlantic Overview

TROPICAL OUTLOOK

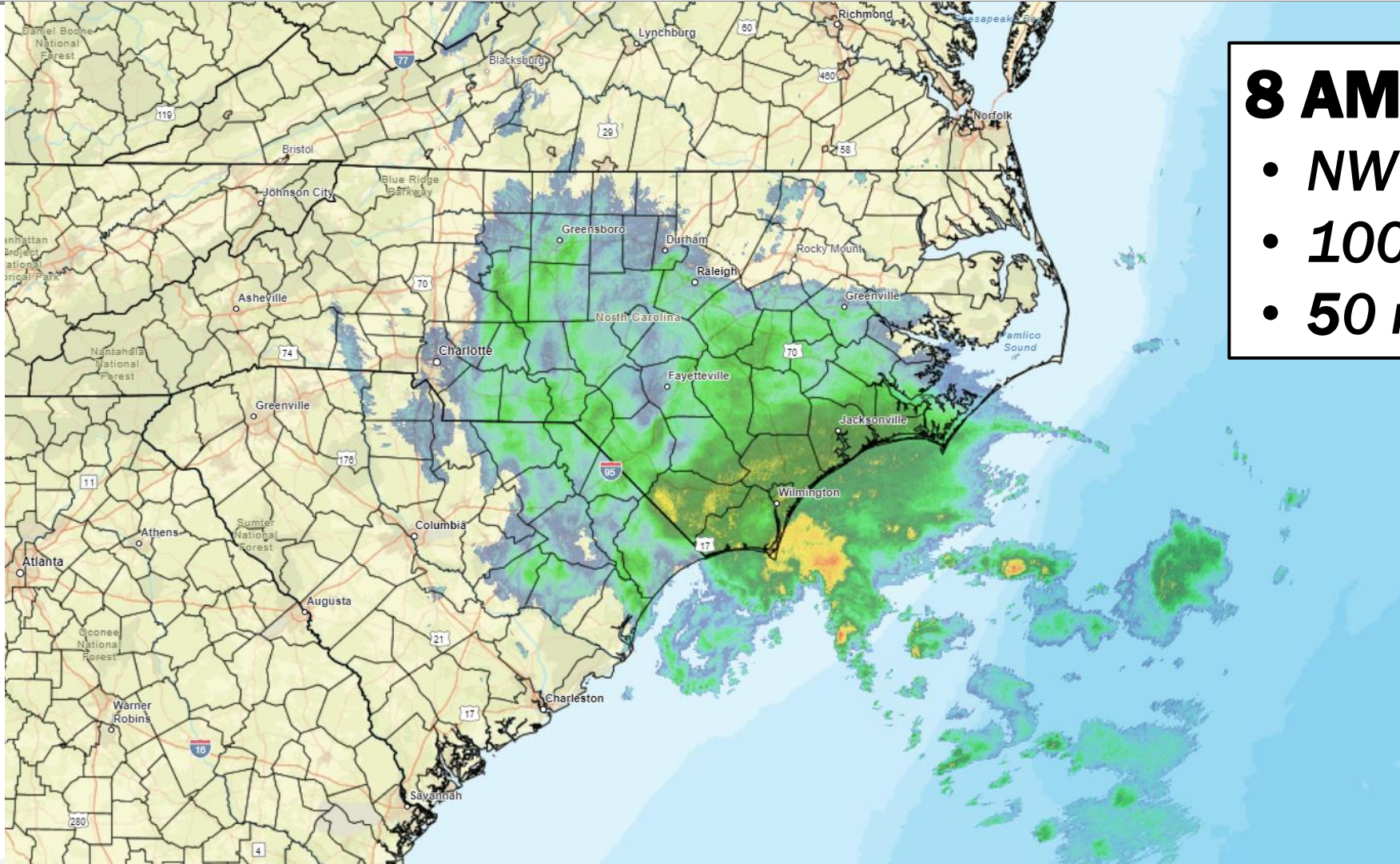


07:58 AM EDT
Mon Sep 16 2024



Potential Tropical Cyclone Eight

RADAR LOOP



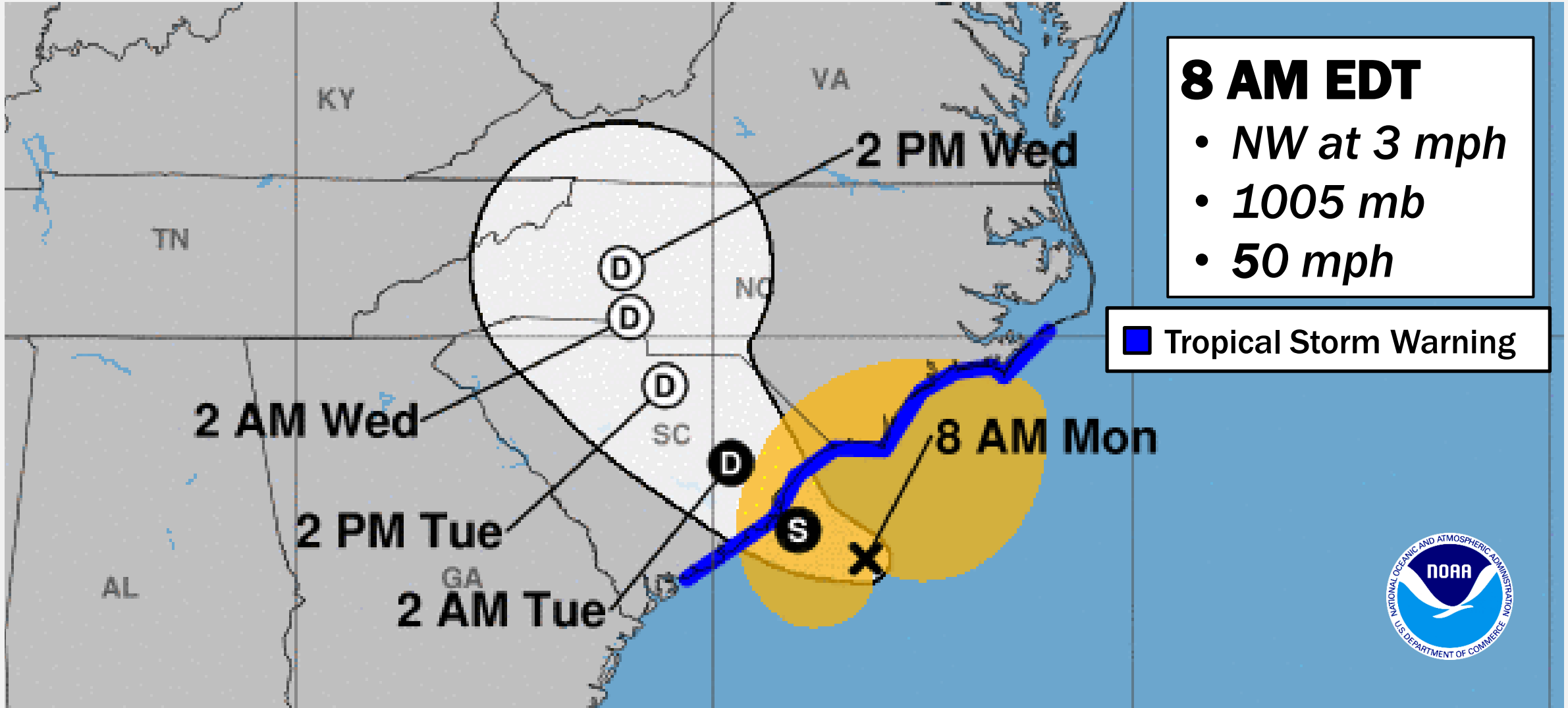
8 AM EDT

- *NW at 3 mph*
- *1005 mb*
- *50 mph*



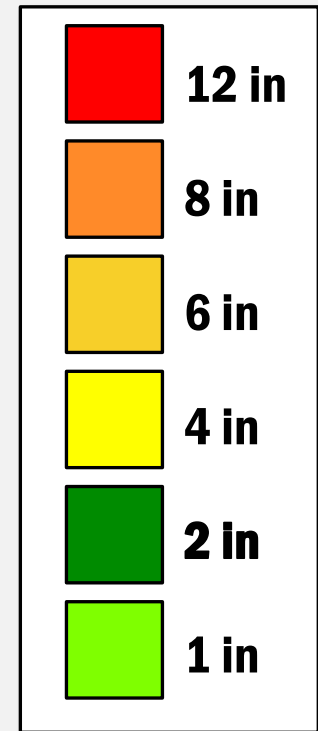
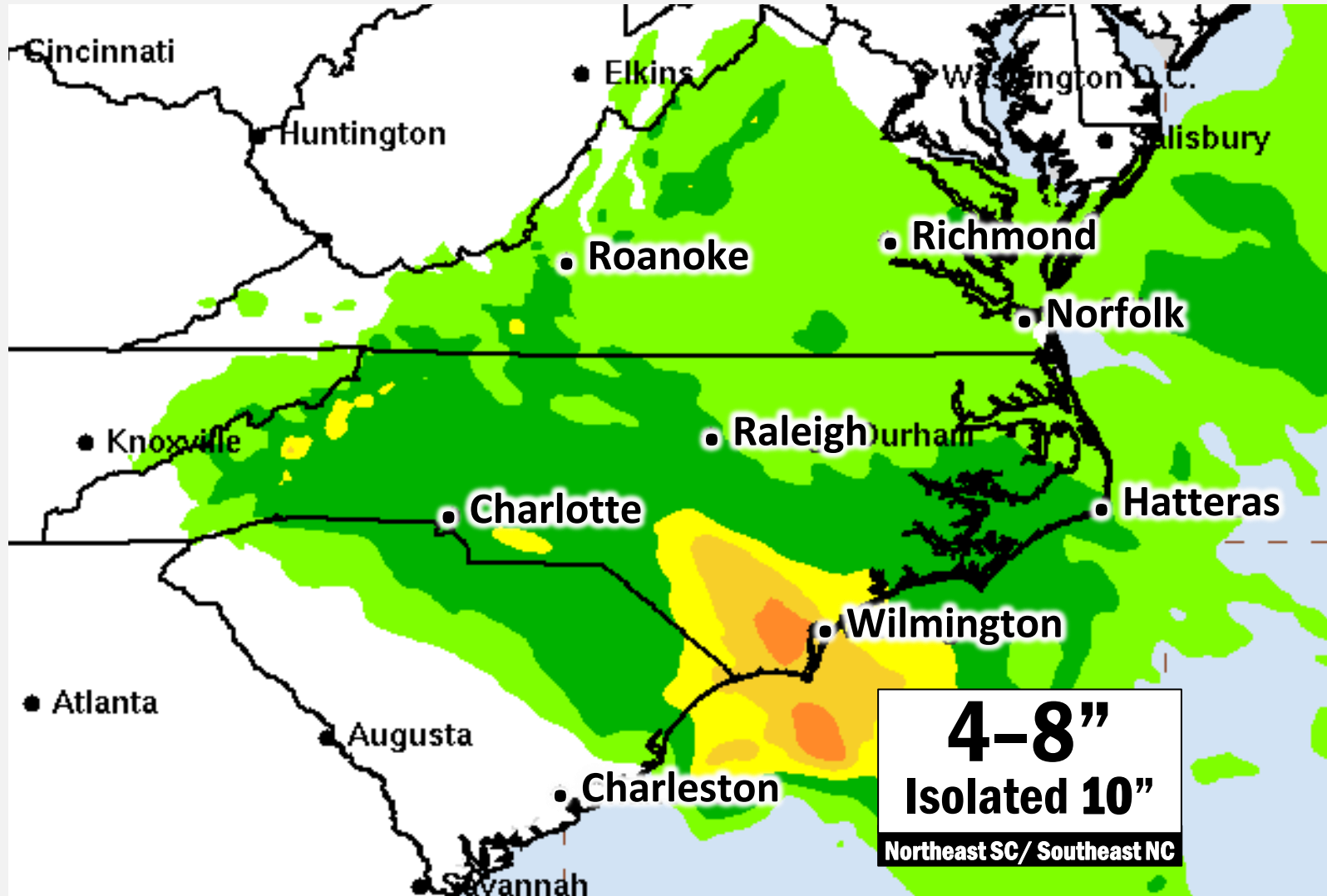
Potential Tropical Cyclone Eight

FORECAST TRACK



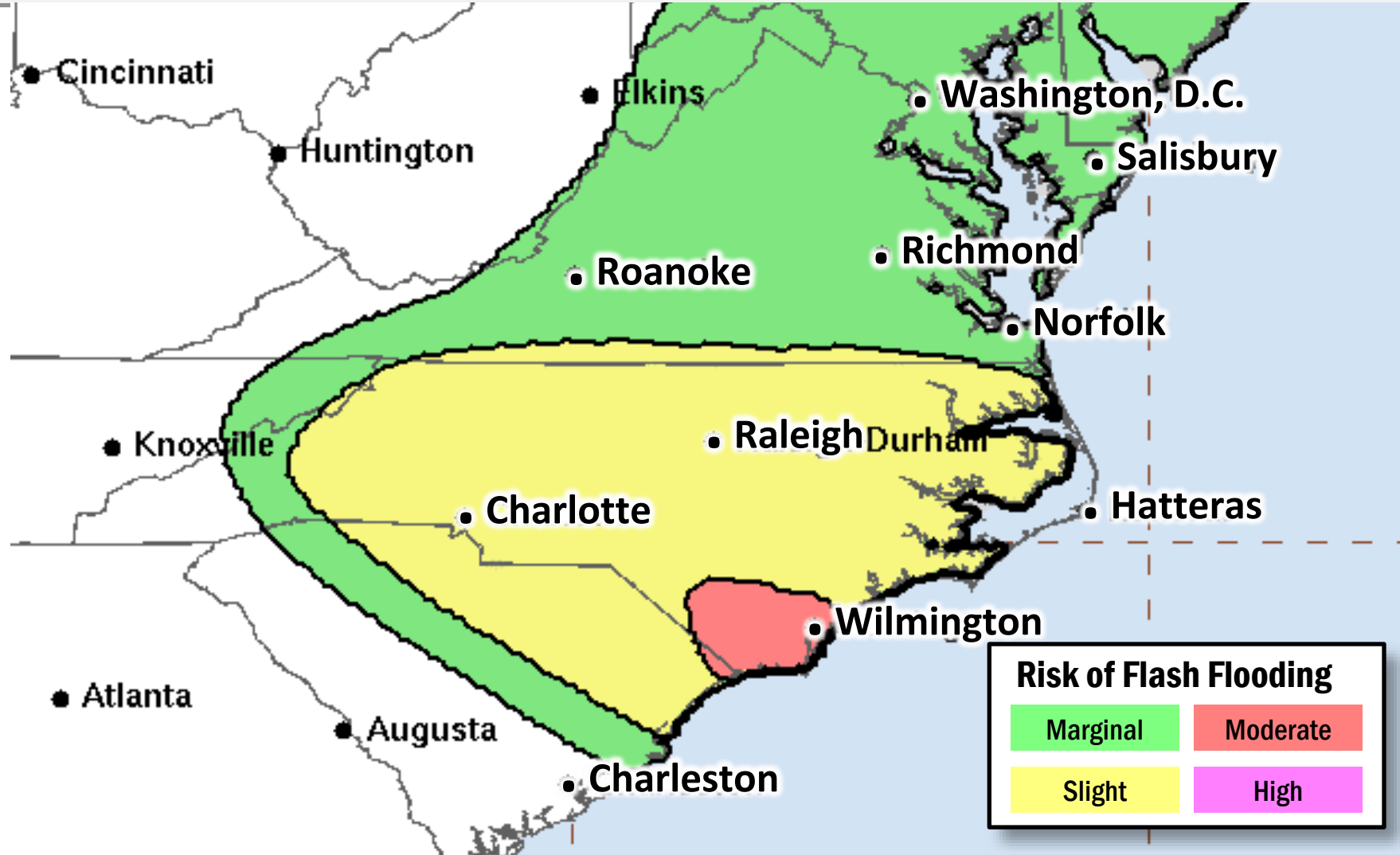
Potential Tropical Cyclone Eight

3 DAY RAINFALL



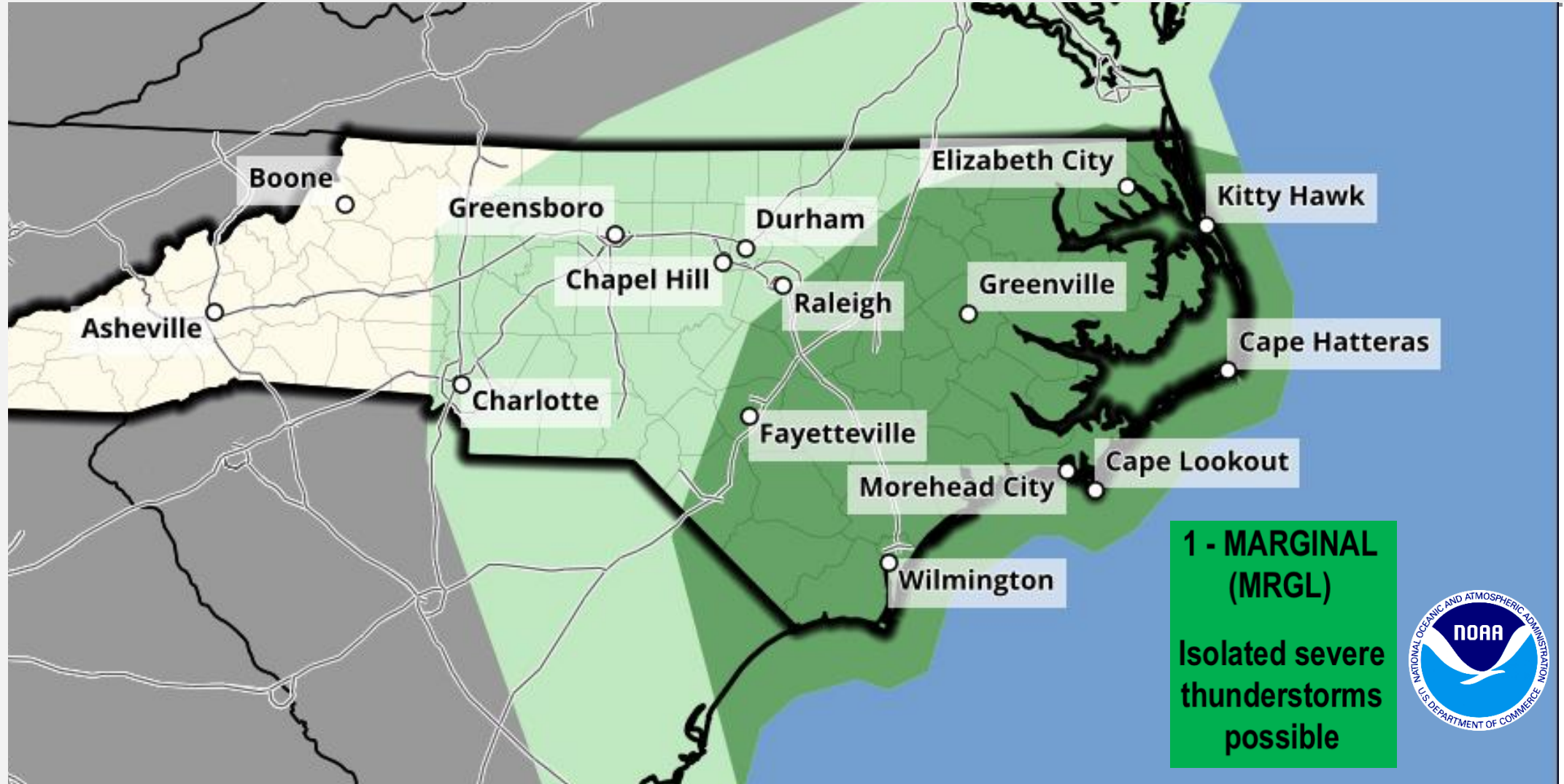
Potential Tropical Cyclone Eight

FLASH FLOOD RISK



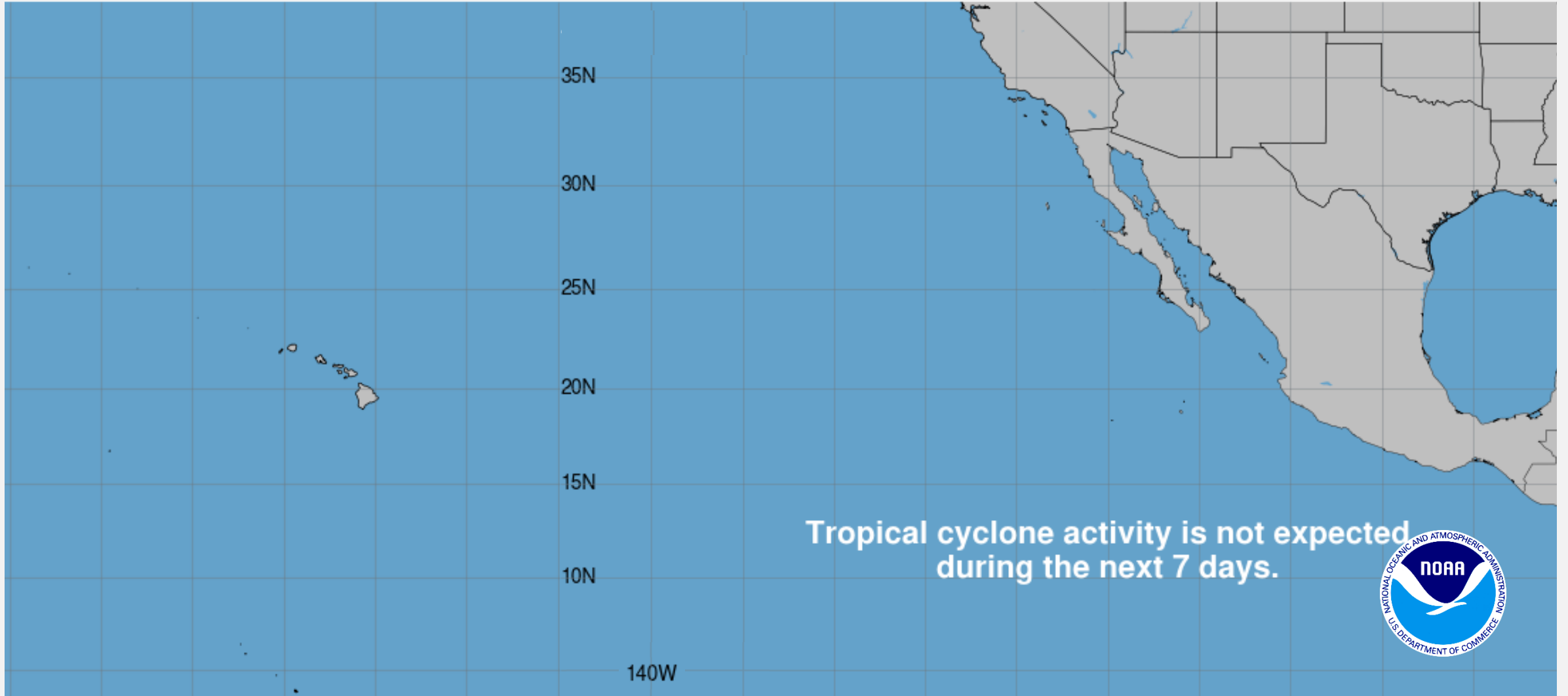
Potential Tropical Cyclone Eight

SEVERE WEATHER OUTLOOK



Pacific Overview

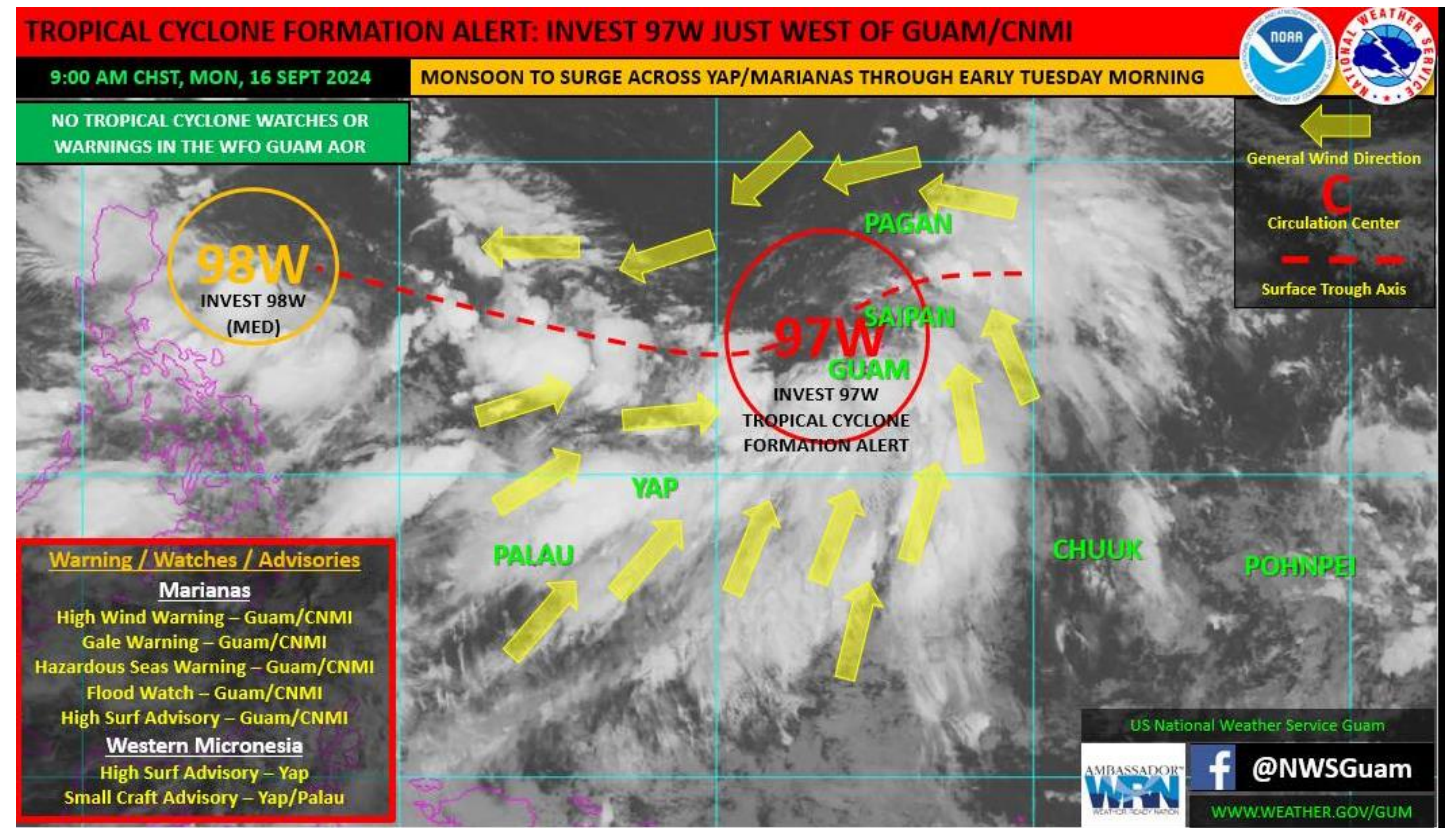
TROPICAL OUTLOOK



Invest 97W – Western Pacific

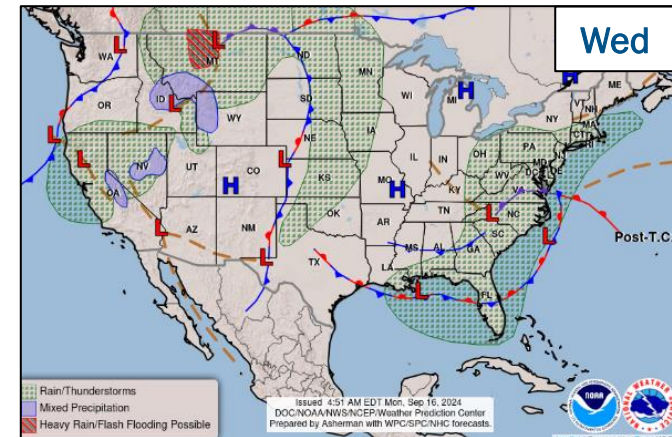
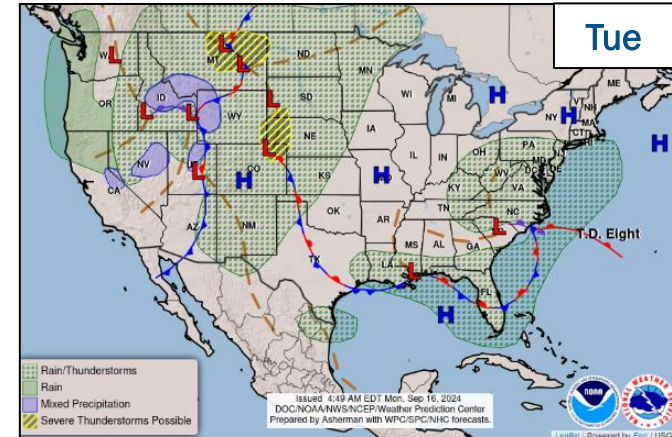
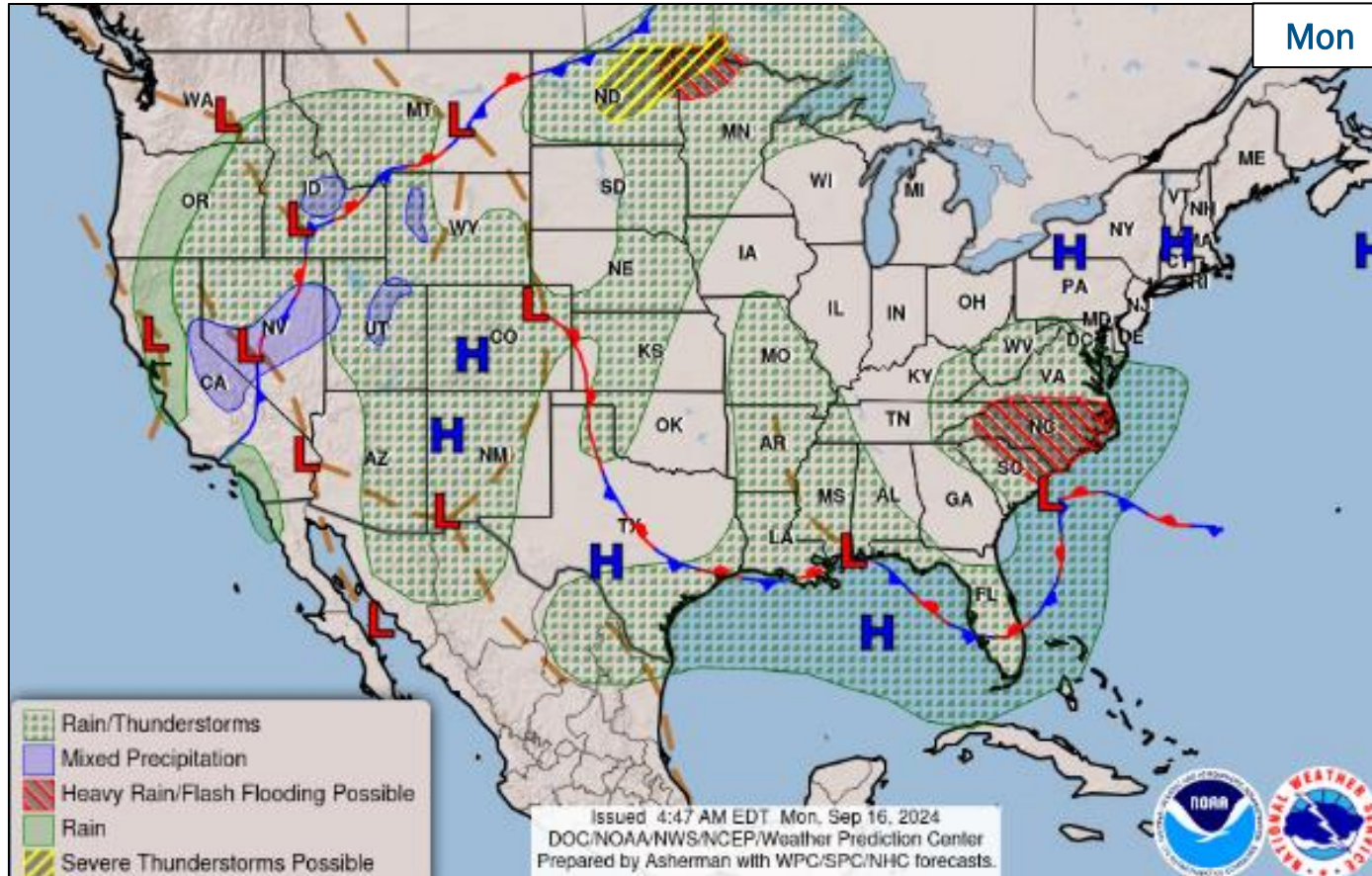
Situation: (as of 2:00 a.m. ET)

- Located 3 miles WNW of Guam
- Moving NNE at 5 mph
- Sustained winds are 18-23 mph
- A High Wind Warning is in effect until 4:00 a.m. ET. Winds of 30-40 mph with gusts to 55 mph are possible.
- A Flash Flood Watch is in place through 4:00 p.m. ET
- Heavy rainfall may produce flash flooding in low-lying and poor drainage areas.
- There is a High Chance Invest 97W will develop into a tropical cyclone with 24 hours.
- The system is forecast to move northward away from the Marianas while gradually developing into a tropical cyclone.



FEMA

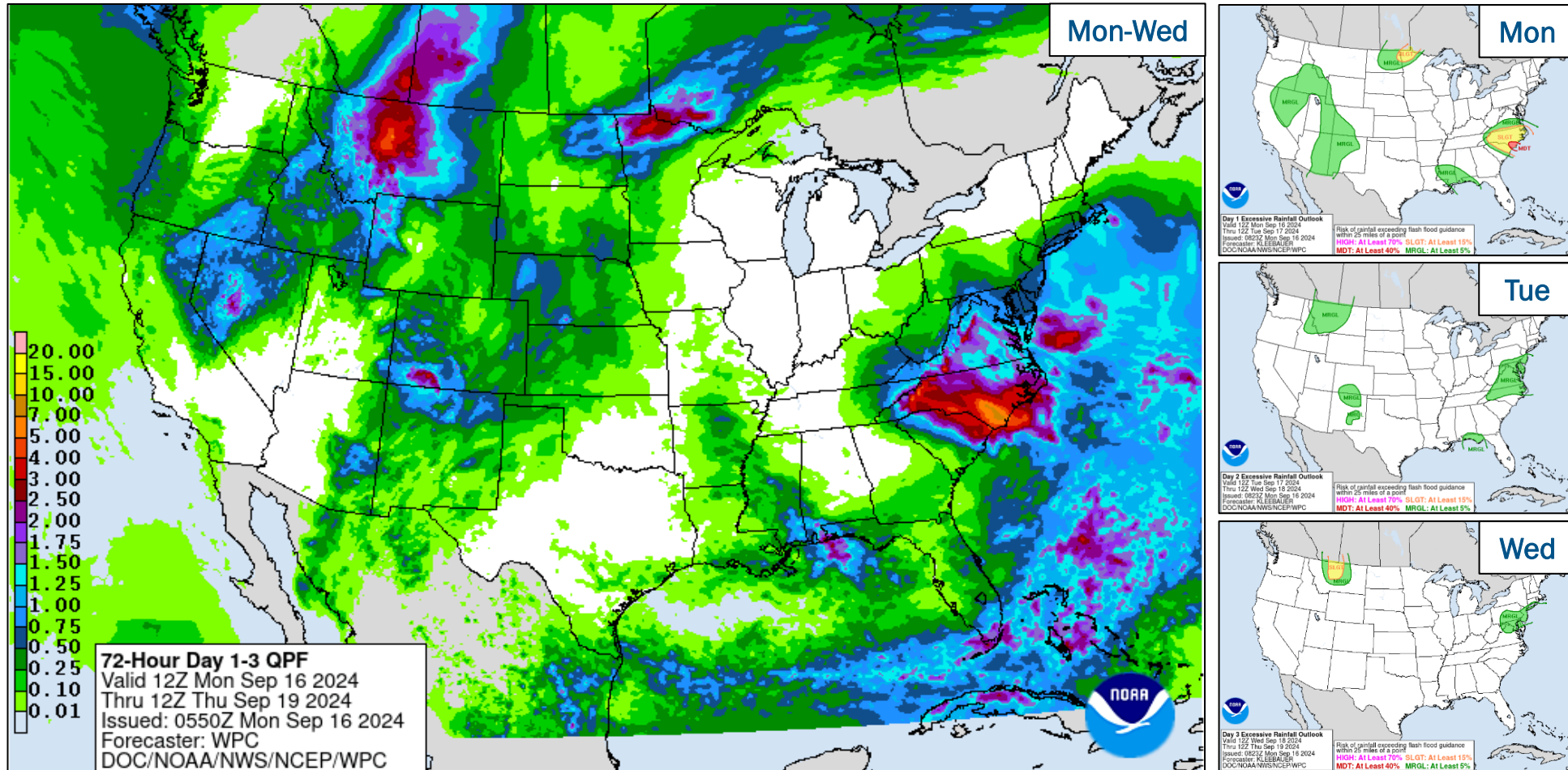
National Weather Forecast



FEMA

National Watch Center

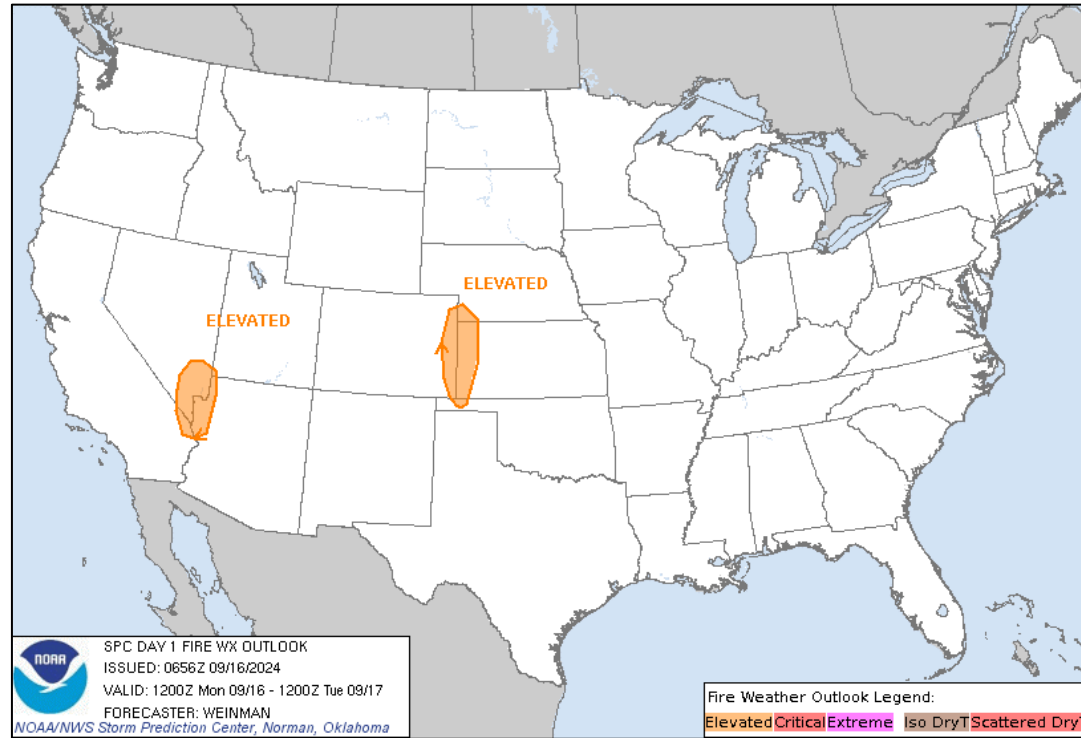
Precipitation & Excessive Rainfall



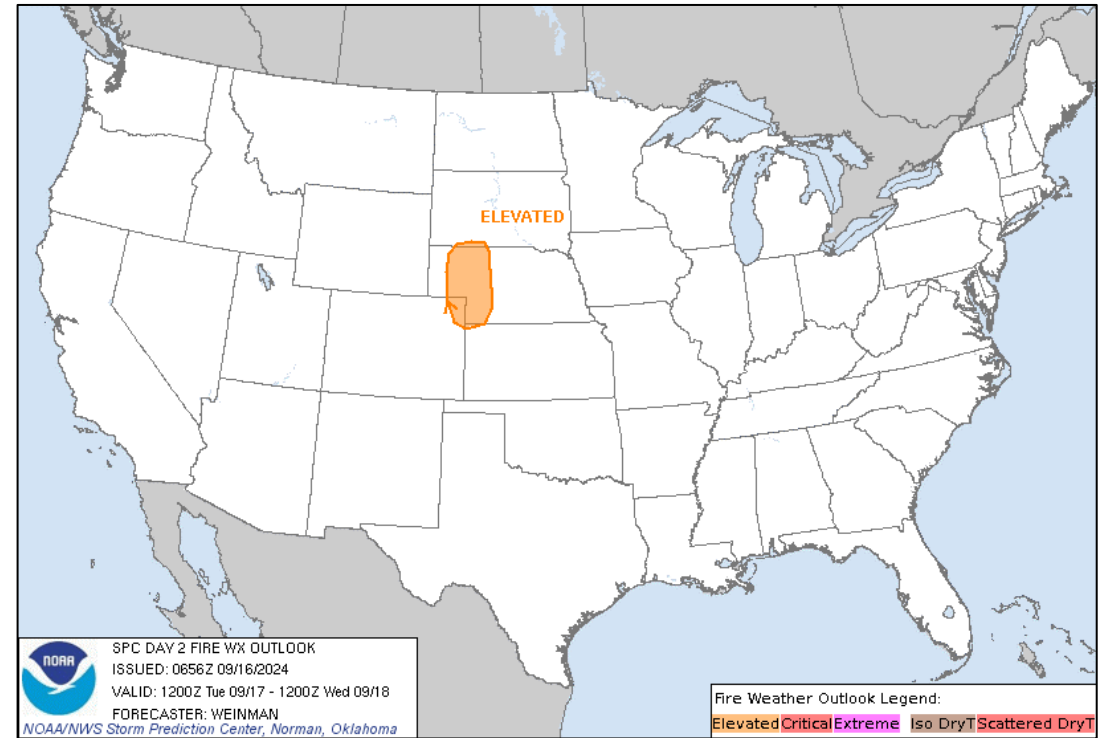
FEMA

National Watch Center

Fire Weather Outlook



Today



Tomorrow



FEMA

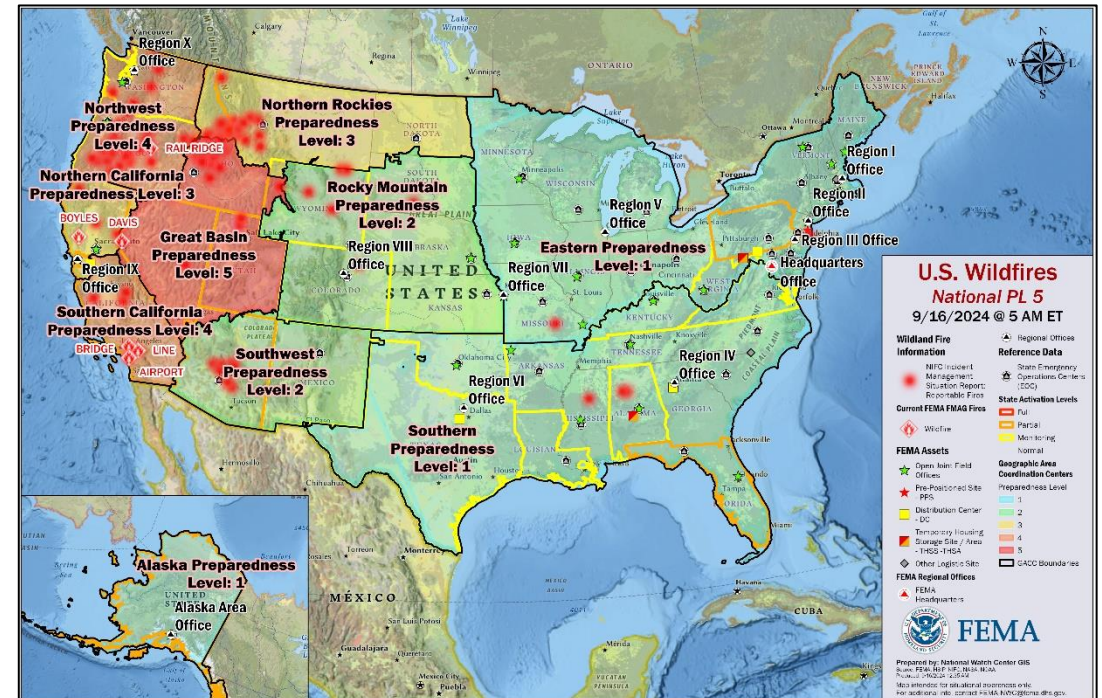
National Watch Center

National Fire Activity *(as of Sep 15)*

National Preparedness Level

PL 5

Initial Attack Activity (24-hour period)	Light (45 fires)
New large fires:	2
Large fires contained:	1
Uncontained large fires:	61
Cumulative Acres Burned	7,329,660
Total Responders	27,371
Type 1 IMTs deployed	3
Complex IMTs deployed	25 of 41



Preparedness Levels Legend

PL 1	Minimal fire activity; many resources available
PL 2	Large wildland fires burning throughout country; resources mobilized from other areas
PL 3	Wildfire activity ongoing throughout 25% of country; National Interagency Coordination Center (NICC) sets priorities, allocates resources, and mobilizes assets at national level
PL 4	High levels of fire activity and areas are competing for firefighting resources; 60% of the nation's wildland firefighting resources committed
PL 5	Extremely high levels of fire activity; 80% of nation's firefighting resources committed

Wildfire Summary

Fire Name (County, ST)	FMAG #	Acres Burned	Percent Contained	Evacuations	Structures (Homes / Other)			Fatalities / Injuries
					Threatened	Damaged	Destroyed	
Line (San Bernardino, CA) FINAL	5535-FM-CA	38,804 (+387)	42% (+13)	M: Lifted	H: 36,400 (-400)	H: 3	H: 1	0 / 3
				V: 0	O: 0	O: 1 (+1)	O: 0	
Bridge (Los Angeles/San Bernadino, CA)	5537-FM-CA	54,658 (+879)	9% (+4)	M: 18,163 (-5,726)	H: 9,618 (-1,942)	H: 5 (+1)	H: 33 (+3)	0 / 3 (+1)
				V: 0	O: 502 (-102)	O: 8 (+1)	O: 21 (+2)	
Airport (Riverside, CA)	5538-FM-CA	23,519	19%	M: 22,599	H: 20,780 (-1,213)	H: 11 (+1)	H: 120 (+31)	0 / 14
				V: 0	O: 0	O: 23 (+5)	O: 40 (+10)	
Rail Ridge (Grant/Crook/Wheeler, OR)	5534-FM-OR	162,278 (+249)	30% (+5)	M: 0	H: 302	H: 1	H: 2	0 / 13 (+1)
				V: 0	O: 510	O: 0	O: 6	

(Evacuations: M = Mandatory / V = Voluntary; Structures: H = Homes and Mixed Commercial/Residential / O = Non-residential Commercial/Other Minor Structures)



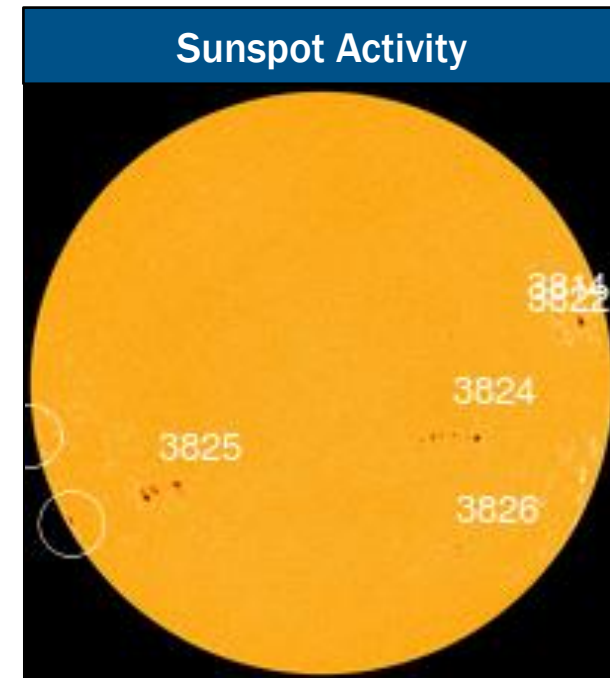
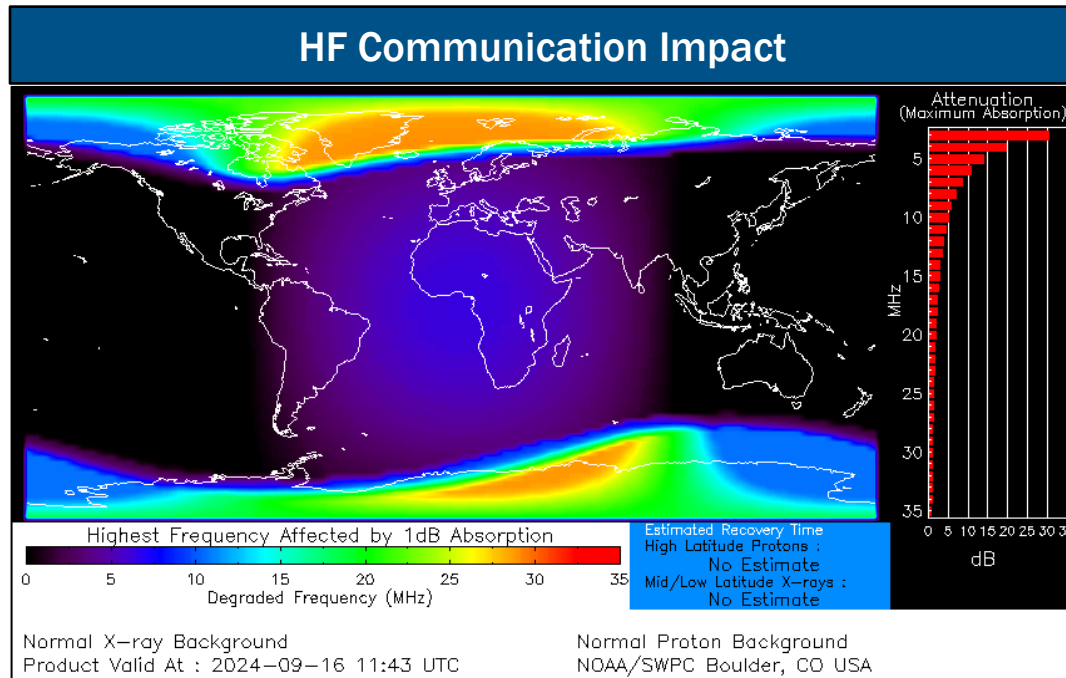
FEMA

National Watch Center

Space Weather Outlook

Minor	Space Weather Activity	Geomagnetic Storms	Solar Radiation	Radio Blackouts
Past 24 Hours	None	None	None	None
Next 24 Hours	Strong	G3	None	R1

For further information on NOAA Space Weather Scales refer to: <http://www.swpc.noaa.gov/noaa-scales-explanation>
 For further information on Sunspot Activity refer to: <https://www.swpc.noaa.gov/phenomena/sunspotssolar-cycle>



FEMA

FEMA Common Operating Picture

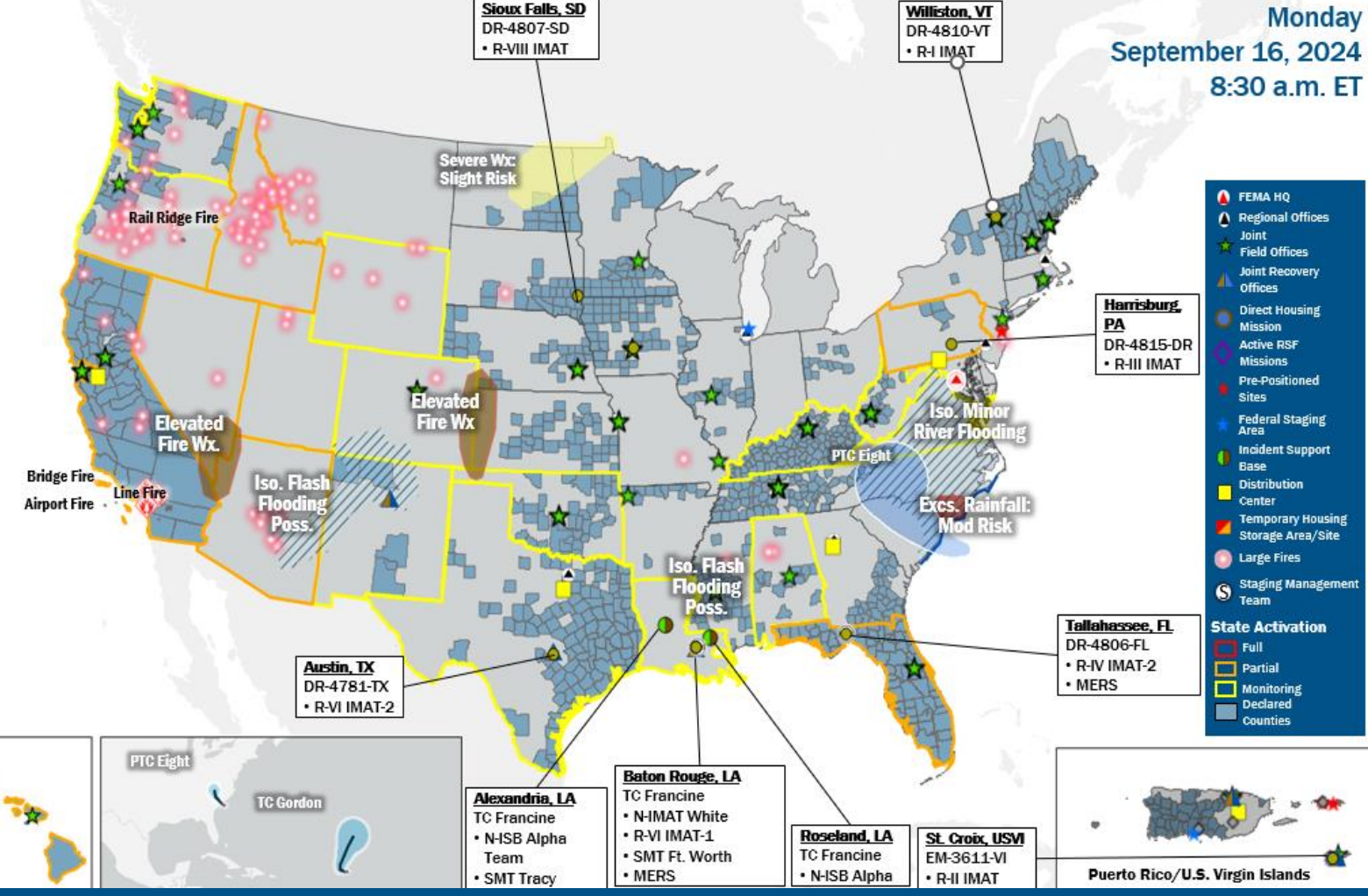
23 + 5 Joint Field Offices Virtual Joint Field Offices Supporting
101+ 9 Major Disasters Emergency Declarations
11 Direct Housing Missions **17** RSF-Supported Disasters **5** Joint Recovery Offices

Monday
 September 16, 2024
 8:30 a.m. ET

FEMA HQ		N-IMATs 2-5 Teams Available	
NWC	NRCC	Red	
Monitoring	Steady State	White	LA (Sep 10)
FEMA REGIONS		Blue	
Watch	RRCC	Gold	
Monitoring	I	Rostered	
Monitoring	II	Rostered	
Monitoring	III	Rostered	
Monitoring	IV	Rostered	
Monitoring	V	Rostered	
Monitoring	VI	Rostered	
Monitoring	VII	Rostered	
Monitoring	VIII	Rostered	
Monitoring	IX	Rostered	
Monitoring	X	Rostered	
Notes:		HS	
NRCC/RWCs/RRCCs:	State EOCs:	R-IMATs 4-6 Teams Available	
• NSTR	• OK: Severe Weather	I	VT (Aug 19)
	• HI/OK/NM/NV/OR/WA/ID/WY/CA: Wildfires	II	VI (Aug 9)
	• AZ: SW Border	III	PA (Sep 12)
	• CO: Hwy. 50 closure/Avian Flu	IV-1	2
	• AK/NM/AZ/UT: Flooding	IV-2	FL (Aug 2)
	• FL/PA: TC Debby	V	1
	• WV: Drought	VI-1	1/LA (Sep 10)
	• KY: Active Shooter	VI-2	TX (May 17)
	• TX/LA/AL: TC Francine	VII	Reconstituting
	• VA: Operation FREE	VIII	SD (Aug 16)
		IX-1	Personnel
		IX-2	Personnel
		X	Personnel
Volunteer Force		Fully Mission Capable (FMC)	
Rostered 7,840	Deployed 12	Partially Mission Capable (PMC)	
Surge Capacity Force		Not Mission Capable (NMC)	
Rostered 7,785	Deployed 0	Deployed	

REGIONAL BREAKDOWN				
	JFO/VJFO	DR	EM	JRO
I	4/0	17	2	0
II	1/1	4	2	2
III	1/0	4	0	0
IV	5/0	25	4	0
V	2/0	3	0	0
VI	2/0	8	0	3
VII	3/1	10	0	0
VIII	0/1	4	0	0
IX	2/1	18	0	0
X	3/1	8	0	0

Alaska
Commonwealth of Northern Mariana Islands
Guam
American Samoa
Hawaii
Puerto Rico/U.S. Virgin Islands



IM Workforce

13,681 Assigned
 4,840 (+1) Unavailable
 6,453 (-35) Deployed
 17% / 2,388 (+34) Available

IM Cadre Availability

15 Cadres ≤ 25% Availability

Disability Integration: 14% (7/43); External Affairs: 19% (97/523); Environmental Planning and Historic Preservation: 14% (112/827); Field Leadership: 16% (23/147); Financial Management 22% (50/230); Hazard Mitigation: 10% (123/1,211); Human Resources: 5% (9/168); Individual Assistance: 15% (371/2,533); Information Technology: 20% (129/639); Logistics: 1.1% (177/1,581); Operations: 13% (43/344); Public Assistance: 12% (255/2,217); Planning: 3% (16/463); Safety: 6% (6/93); Security: 17% (23/139)

MERS

≥ 66%

36 Assigned
 0 Unavailable
 2 Deployed
 34 Available

US&R

≥ 66%

28 Assigned
 1 Unavailable
 1 Deployed
 26 Available

FCO

2 Type I

52 Assigned
 5 Unavailable
 43 (32 FCOR) Deployed
 4 Available

Joint Preliminary Damage Assessments

Region	State / Location	Incident	IA	Number of Counties/Jurisdictions		Start - End
			PA	Requested	Complete	
I	CT	Severe Storms & Flooding Aug 18-19	IA	3	3	8/29 - 9/5
			PA	3	0	9/13 - TBD
II	PR	Tropical Cyclone Ernesto Aug 13-15	IA	0	0	N/A
			PA	61	51	8/30 - TBD
IV	SC	Tropical Cyclone Debby Aug 3-22	IA	3	3	8/29 - 9/5
			PA	13	10	8/27 - TBD
IX	CA	Park Fire and Borel Fire Jul 24 and continuing	IA	3	2	8/28 - TBD
			PA	0	0	N/A
X	ID	Gwen Fire Jul 25 - Aug 9	IA	1	0	9/16 - TBD
			PA	0	0	N/A



FEMA

Declaration Requests in Process – 16

State / Tribe / Territory – Incident Description	Type	IA	PA	HM	Requested
OH – Train Derailment	DR	X	X	X	Jul 3, 2023
NY – Severe Storms, Tornadoes, Straight-line Winds, and Flooding	EM		X		Jul 20
SCA* – Watch Fire	DR	X	X	X	Aug 16
CTBYN** – Wildfires	DR	X	X	X	Aug 23
SRMT*** – Severe Storm and Flooding	DR		X	X	Aug 26
IL – Severe Storms, Tornadoes, Straight-line Winds, and Flooding	DR	X		X	Aug 28
VT – Severe Storms, Flooding, Landslides, and Mudslides	DR	X	X	X	Aug 28
NE – Severe Storms, Straight-line Winds, Tornadoes, and Flooding	DR		X	X	Aug 29
KS – Severe Storms, Straight-line Winds, Tornadoes, and Flooding	DR		X	X	Sep 3
NE – Severe Storms, Straight-line Winds, Tornadoes, and Flooding	DR		X	X	Sep 6
NY – Remnants of Tropical Storm Debby	DR		X	X	Sep 6
CT – Severe Storms and Flooding	DR	X	X	X	Sep 9
GA – Hurricane Debby	EM	X	X	X	Sep 11
MI – Severe Storm and Tornadoes (APPEAL)	DR	X		X	Sep 11
LA – Hurricane Francine	DR	X	X	X	Sep 12
USVI – Tropical Storm Ernesto	DR		X	X	Sep 13

* San Carlos Apache Tribe, ** Confederated Tribes and Bands of the Yakama Nation, *** Saint Regis Mohawk Tribe



FEMA

National Watch Center



FEMA

Helping people before, during, and after disasters.



Scan to subscribe to this briefing.