

FEMA National Watch Center

Daily Operations Briefing

Monday, September 9, 2024

8:30 a.m. ET



FEMA

National Current Ops / Monitoring

New Significant Incidents / Ongoing Ops

- No significant incidents / operations

Hazard Monitoring

- Elevated Fire Weather – Northern Intermountain to the Northern Plains
- Excessive Heat – Southern California
- Excessive Rainfall – Texas
- Tropical Activity:
 - Atlantic:
 - Potential Tropical Cyclone Six
 - Disturbance 1: (AL92): Medium (60%)
 - Disturbance 2: Medium (60%)
 - Eastern Pacific:
 - Disturbance 1: Medium (60%)
 - Central Pacific:
 - Disturbance 1: Low (near 0%)
 - Western Pacific:
 - Disturbance 1: (95W): High

Disaster Declaration Activity

- FMAG Approved - CA

Event Monitoring

- No significant events



FEMA

Tropical Outlook

Western Pacific

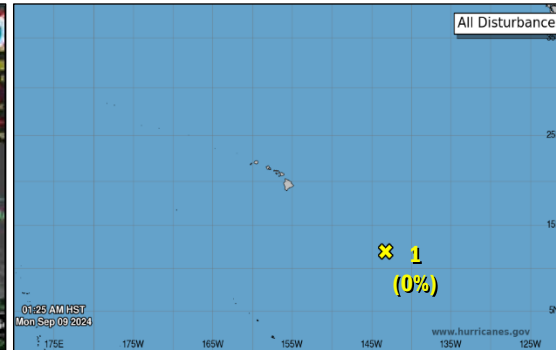


Disturbance 1 (95W): (as of 11:30 p.m. ET, Sep 8)

- See slide below

[ChST Timetable](#)

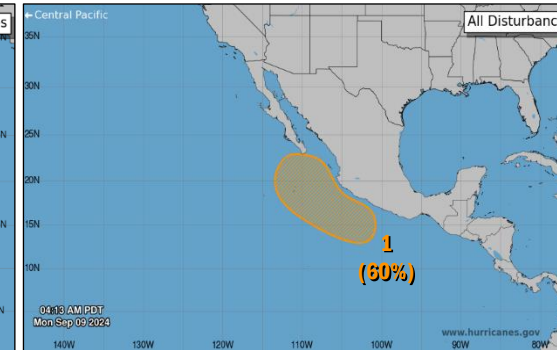
Central Pacific



Disturbance 1: (as of 8:00 a.m. ET)

- Located 1,000 miles SE of Hilo, HI
- Conditions are **unfavorable** for development
- Formation chance: 48-hour – Low (**near 0%**); 7-day – Low (**near 0%**)

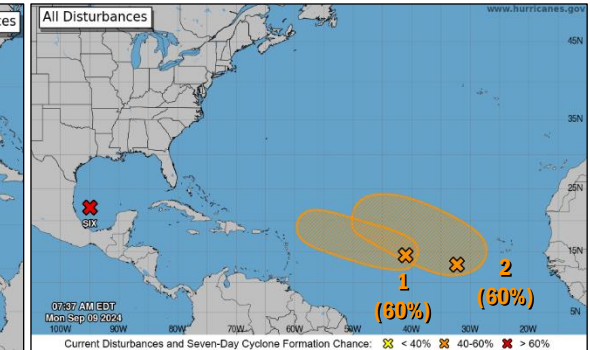
Eastern Pacific



Disturbance 1: (as of 8:00 a.m. ET)

- Located off the coast of SW Mexico
- Gradual development is possible
- Formation chance: 48-hour – Low (near 0%); 7-day – Medium (**60%**)

Atlantic



Potential Tropical Cyclone Six: (Advisory #3A as of 8:00 a.m. ET)

- See slide below

Disturbance 1: (AL92) (as of 8:00 a.m. ET)

- Located over the central tropical Atlantic
- A tropical depression could form in the middle of the week
- Formation chance: 48-hour – **Medium (60%)**; 7-day – **Medium (60%)**

Disturbance 2: (as of 8:00 a.m. ET)

- Located several hundred miles WSW of the Cabo Verde Islands
- A tropical depression could form in the middle of the week
- Formation chance: 48-hour – Low (near 0%); 7-day – Medium (**60%**)



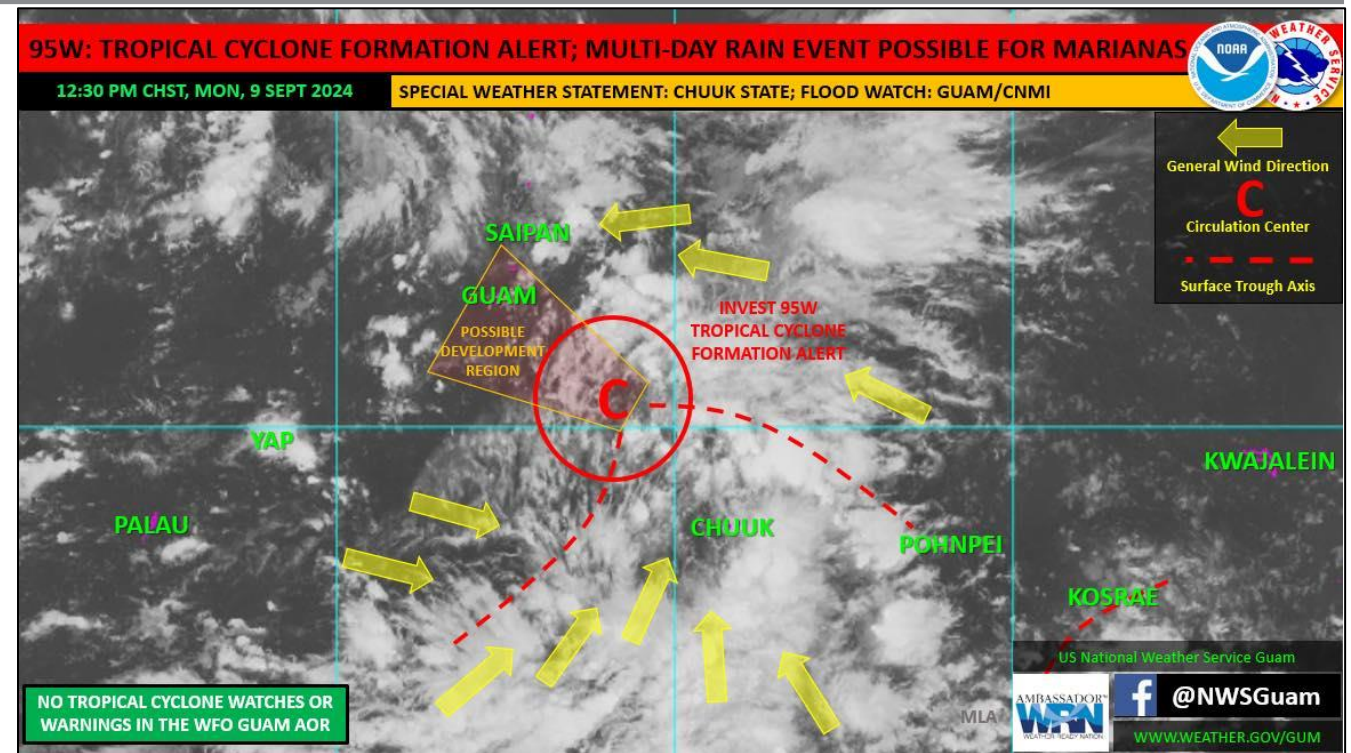
FEMA

National Watch Center

Disturbance 1 (95W) – Western Pacific

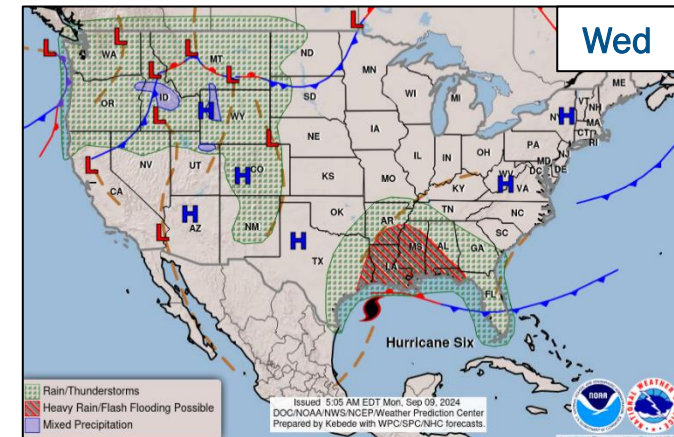
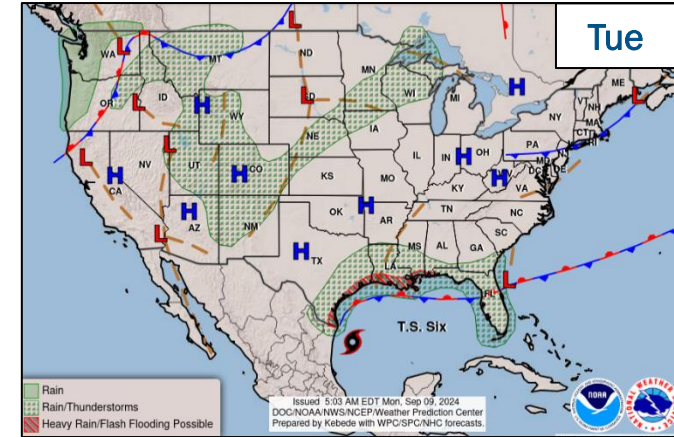
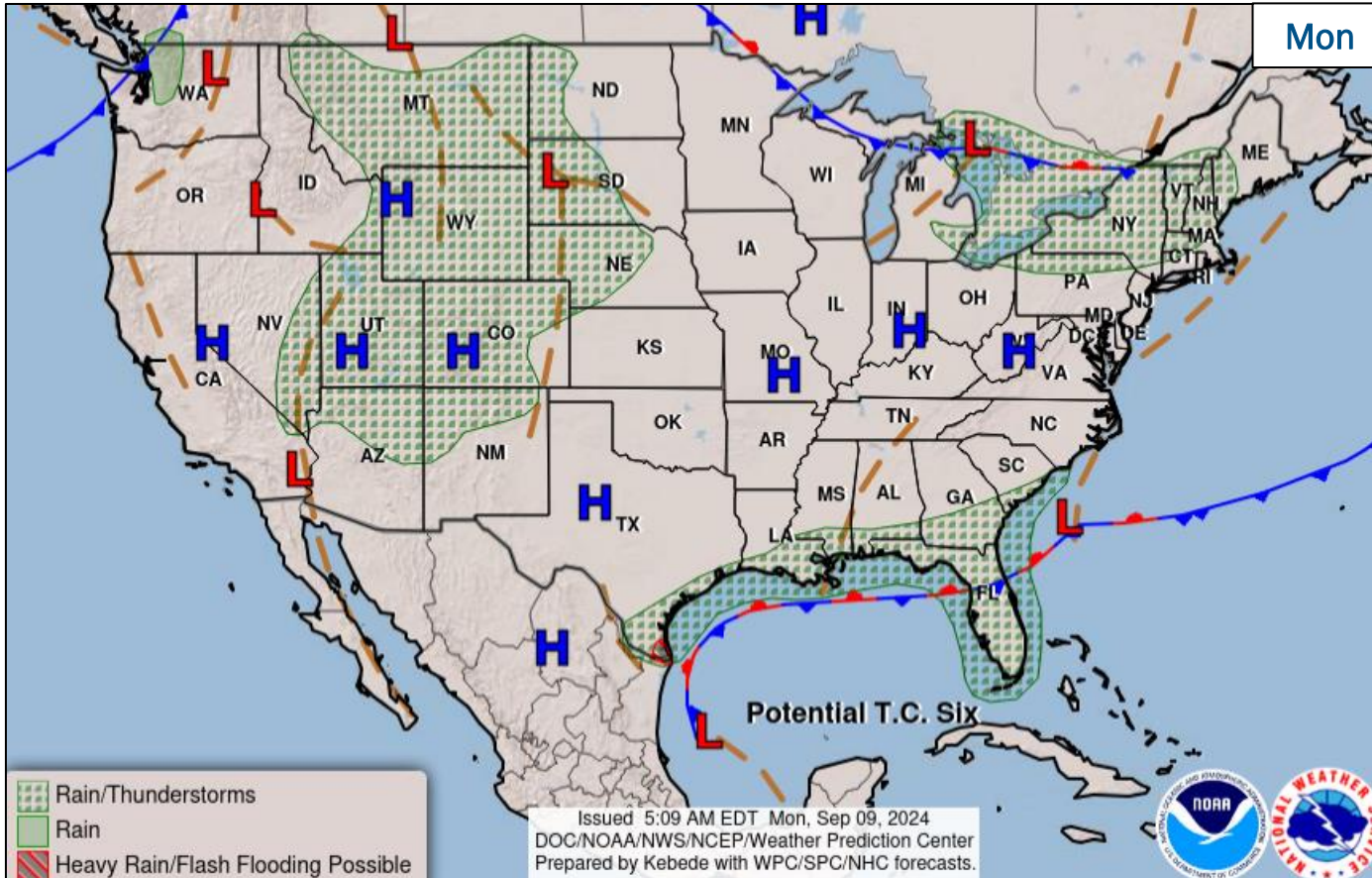
Situation: (as of 11:30 p.m. ET, Sep 8)

- Located 305 miles SE of Guam
- Moving WNW at 18 mph
- Maximum sustained winds 20-25 mph
- Tropical Cyclone development is likely within the next 24 hours



FEMA

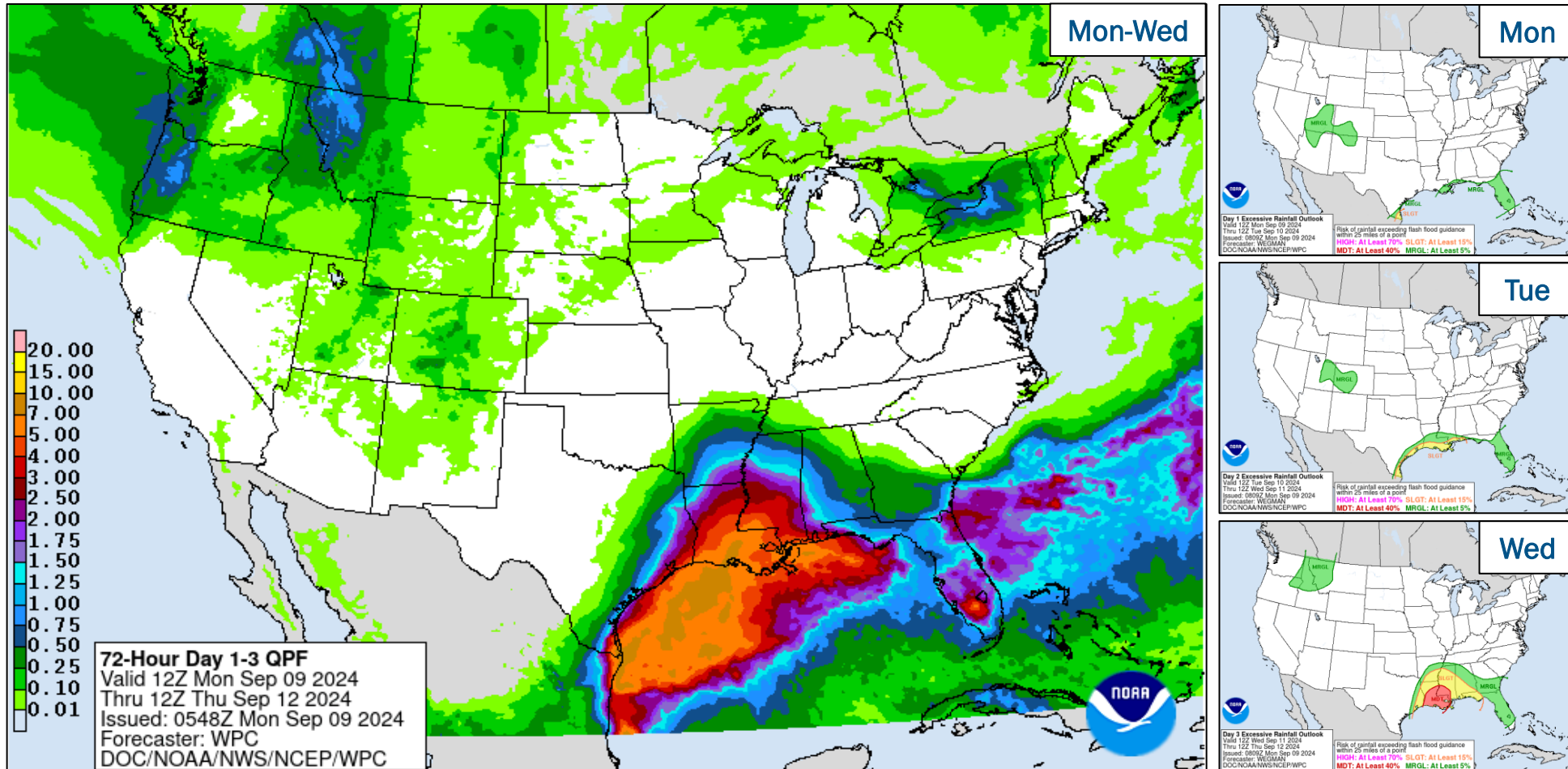
National Weather Forecast



FEMA

National Watch Center

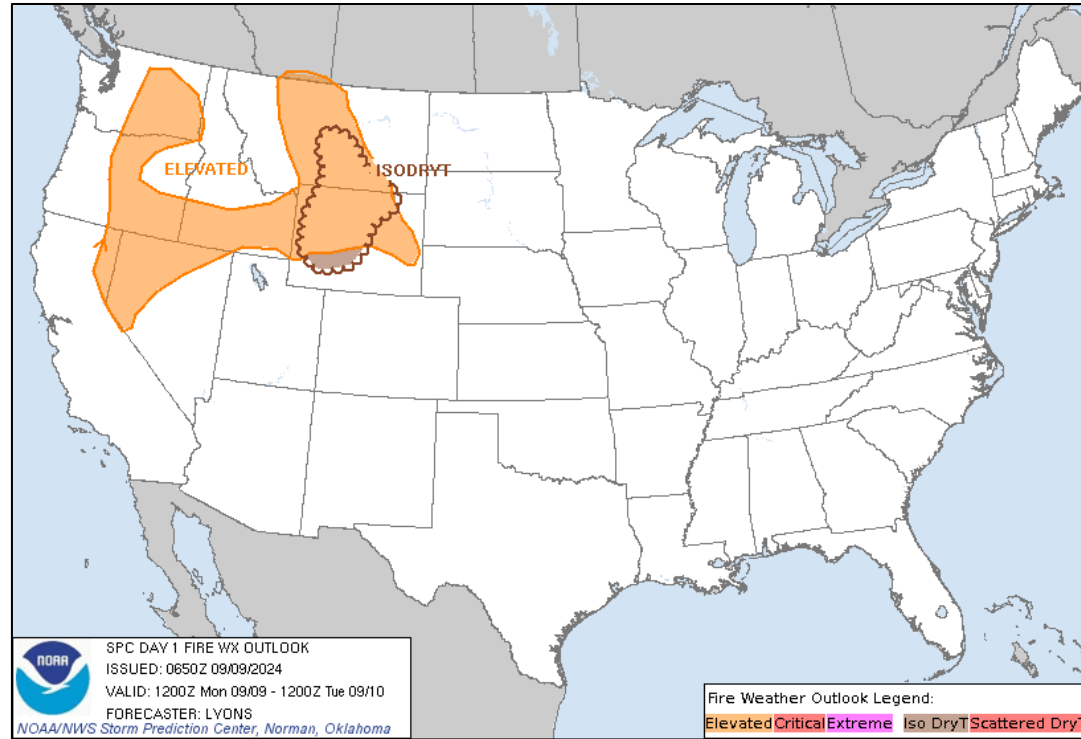
Precipitation & Excessive Rainfall



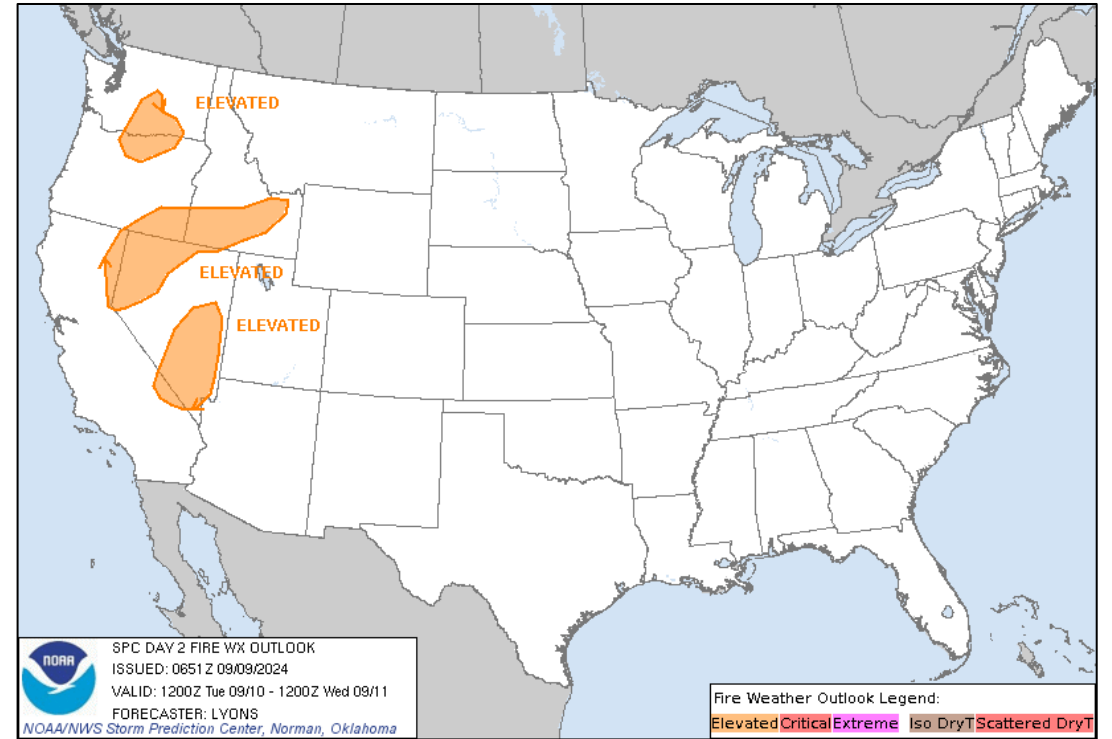
FEMA

National Watch Center

Fire Weather Outlook



Today



Tomorrow



FEMA

National Watch Center

National Fire Activity *(as of Sep 9)*

National Preparedness Level

PL 5

Initial Attack Activity (24-hour period)	Light (69 fires)
New large fires:	5
Large fires contained:	3
Uncontained large fires:	70
Cumulative Acres Burned	6,788,766
Total Responders	21,292
Type 1 IMTs deployed	5
Complex IMTs deployed	23 of 41



Preparedness Levels Legend

PL 1	Minimal fire activity; many resources available
PL 2	Large wildland fires burning throughout country; resources mobilized from other areas
PL 3	Wildfire activity ongoing throughout 25% of country; National Interagency Coordination Center (NICC) sets priorities, allocates resources, and mobilizes assets at national level
PL 4	High levels of fire activity and areas are competing for firefighting resources; 60% of the nation's wildland firefighting resources committed
PL 5	Extremely high levels of fire activity; 80% of nation's firefighting resources committed

Boyles Fire – California

Fire Name (County, ST)	FMAG #	Acres Burned	Percent Contained	Evacuations	Structures (Homes / Other)			Fatalities / Injuries
					Threatened	Damaged	Destroyed	
Boyles (Lake County, CA)	XXXX-FM-CA	76	0%	M: 4,000	H: 4,000	H: 0	H: 30	0 / 0
				V: 0	O: 0	O: 0	O: 0	

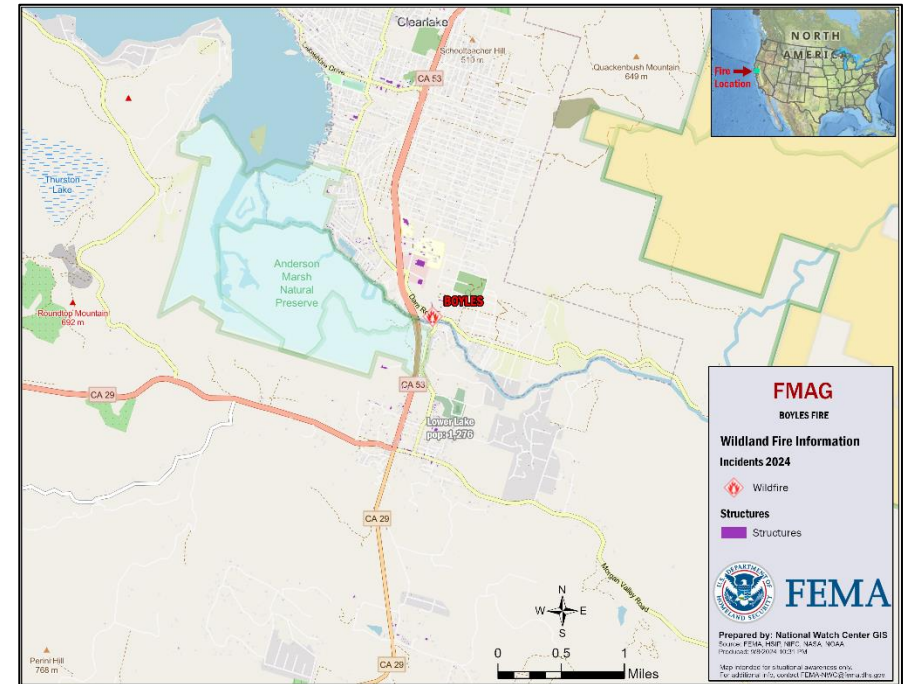
Situation: The Regional Administrator for FEMA Region IX approved a Fire Management Assistance Grant (FMAG) for the Boyles Fire. The fire is burning in the wildland/urban interface of Clearlake City (pop. 17K) in Lake County (pop. 68K). The fire is also threatening a local water system, gas and oil wells, and 2 communication sites.

State / Local Response:

- CA EOC is at Normal Operation

FEMA / Federal Response:

- FMAG approved Sep 8
- Region IX is Monitoring; RRCC is Rostered
- NWC is Monitoring; NRCC at Steady State



Wildfire Summary

Fire Name (County, ST)	FMAG #	Acres Burned	Percent Contained	Evacuations	Structures (Homes / Other)			Fatalities / Injuries
					Threatened	Damaged	Destroyed	
Copperfield (Klamath, OR)	5532-FM-OR	3,822	77% (+9)	M: 462	H: 208	H: 0	H: 8	0 / 0
				V: 0	O: 200	O: 0	O: 22	
Davis (Washoe County, NV)	XXXX-FM-NV	6,500 (+5,000)	0%	M: 9,000 (+8,200)	H: 3,070 (-11,930)	H: 0	H: 14 (+14)	0 / 0
				V: 0	O: 50 (+50)	O: 0	O: 0	
Line (San Bernardino, CA)	XXXX-FM-CA	17,459	0%	M: 6,112 (+302)	H: 36,326 (+923)	H: 0	H: 0	0 / 3
				V: 0	O: 2	O: 0	O: 0	
Rail Ridge (Grant, Crook, and Wheeler, OR)	XXXX-FM-OR	135,061 (+28,061)	7% (+3)	M: 331	H: 274 (+132)	H: 0	H: 6 (+6)	0 / 0
				V: 0	O: 456 (+456)	O: 0	O: 1 (+1)	

(Evacuations: M = Mandatory / V = Voluntary; Structures: H = Homes and Mixed Commercial/Residential / O = Non-residential Commercial/Other Minor Structures)



FEMA

National Watch Center

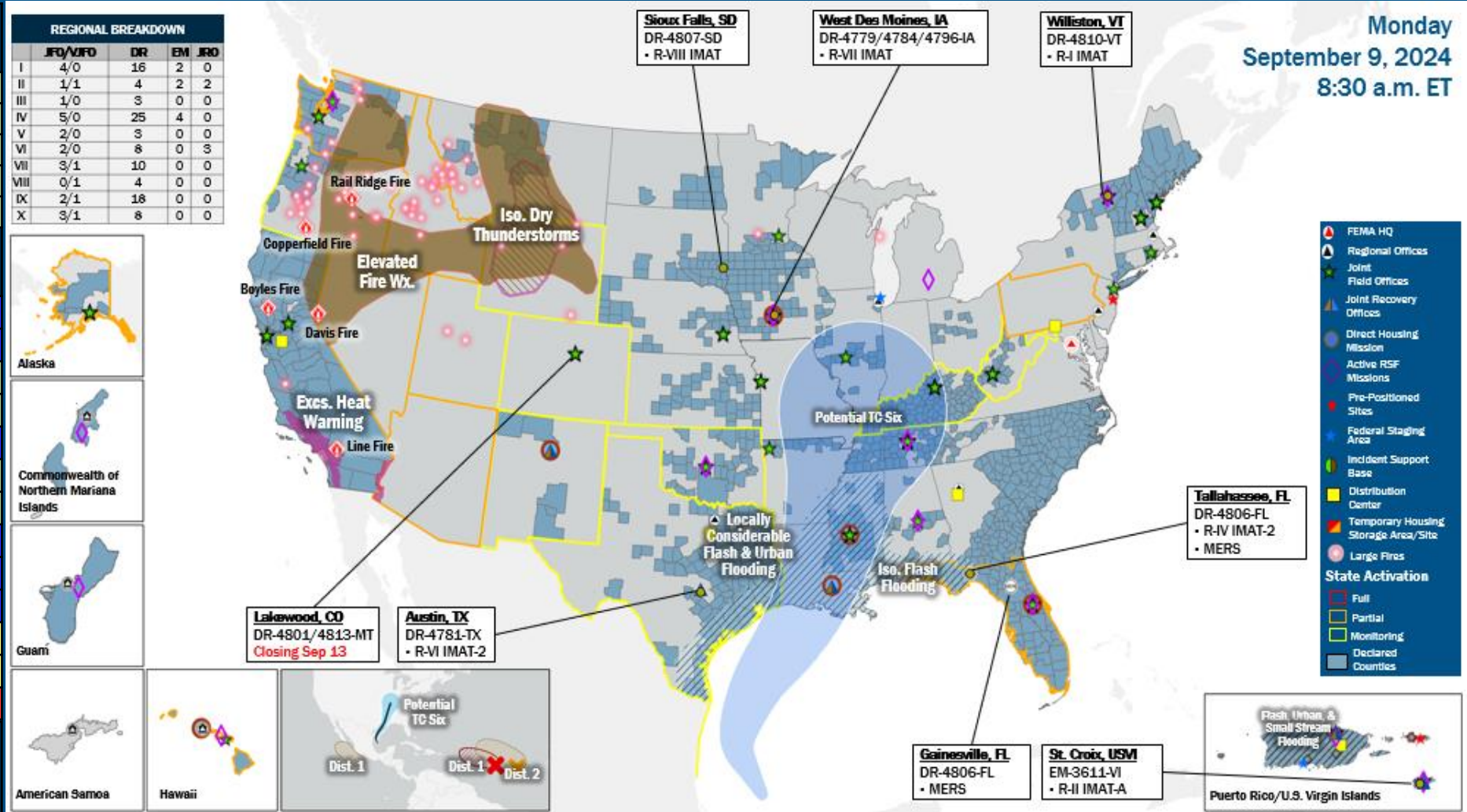
FEMA Common Operating Picture

23 + 5 Joint Field Offices Virtual Joint Field Offices Supporting
99 + 8 Major Disasters Emergency Declarations
11 Direct Housing Missions **17** RSF-Supported Disasters **5** Joint Recovery Offices

Monday
September 9, 2024
8:30 a.m. ET

FEMA HQ	
NWC	NRCC
Monitoring	Steady State
FEMA REGIONS	
Watch	RRCC
Monitoring	I Rostered
Monitoring	II Rostered
Monitoring	III Rostered
Monitoring	IV Rostered
Monitoring	V Rostered
Monitoring	VI Rostered
Monitoring	VII Rostered
Monitoring	VIII Rostered
Monitoring	IX Rostered
Monitoring	X Rostered
Notes:	
NRCC/RWCs/RRCCs: • R3 RRCC will activate at noon E.T. 9/9/2024	State EOCs: • OK: Severe Weather • TX: TC Beryl • HI/ID/NM/NV/OK/OR WA/WY: Wildfires • AZ: SW Border • CO: Hwy. 50 closure/Avian Flu • AK/NM/AZ/UT: Flooding • FL/PA: TC Debby • WV: Drought • KY: Active Shooter
Volunteer Force	
Rostered 7,840	Deployed 11
Surge Capacity Force	
Rostered 7,786	Deployed 0

N-IMATs	
2-5 Teams Available	
Red	
White	
Blue	
Gold	
HS	
R-IMATs	
4-6 Teams Available	
I	VT (Aug 19)
II	VI (Aug 9)
III	
IV-1	3
IV-2	FL (Aug 2)
V	2
VI-1	1
VI-2	TX (May 17)
VII	IA (Jun 24)
VIII	SD (Aug 16)
IX-1	Personnel
IX-2	Personnel
X	Personnel
Fully Mission Capable (FMC)	
Partially Mission Capable (PMC)	
Not Mission Capable (NMC)	
Deployed	



IM Workforce

13,667 Assigned
 4,819 (-22) Unavailable
 6,300 (-25) Deployed

19% (+1) / 2,548 (+47) Available

IM Cadre Availability

16 Cadres ≤ 25% Availability

Alternative Dispute Resolution: 23% (8/35); Disability Integration: 12% (5/43); External Affairs: 25% (129/522); Environmental Planning and Historic Preservation: 13% (110/815); Field Leadership: 16% (24/148); Financial Management: 25% (59/232); Hazard Mitigation: 11% (140/1,243); Human Resources: 5% (8/167); Individual Assistance: 14% (358/2,531); Information Technology: 22% (140/637); Logistics: 14% (223/1,565); Operations: 15% (51/347); Public Assistance: 13% (294/2,216); Planning: 4% (20/459); Safety: 7% (7/94); Security: 12% (16/138)

MERS

≥ 66%

36 Assigned
 0 Unavailable
 1 Deployed

35 Available

US&R

≥ 66%

28 Assigned
 1 Unavailable
 0 Deployed

27 Available

FCO

2 Type I

52 Assigned
 6 Unavailable
 41 (31FCOR) Deployed

5 Available

Joint Preliminary Damage Assessments

Region	State / Location	Incident	IA	Number of Counties/Jurisdictions		Start – End
			PA	Requested	Complete	
I	CT	Severe Storms & Flooding Aug 18-19	IA	3	3	8/29 – 9/5
			PA	3	0	9/13 – TBD
II	NY	Major Flooding (Severe Weather) Aug 19	IA	1	0	9/4 – TBD
			PA	2	0	9/3 – TBD
	PR	Tropical Cyclone Ernesto Aug 13-15	IA	0	0	N/A
			PA	61	4	8/30 – TBD
IV	SC	Tropical Cyclone Debby Aug 3-22	IA	3	3	8/29 – 9/5
			PA	13	3	8/27 – TBD
IX	CA	Park Fire and Borel Fire Jul 24 and continuing	IA	3	2	8/28 – TBD
			PA	0	0	N/A



FEMA

Declaration Requests in Process – 12

State / Tribe / Territory – Incident Description	Type	IA	PA	HM	Requested
OH – Train Derailment	DR	X	X	X	Jul 3, 2023
NY – Severe Storms, Tornadoes, Straight-line Winds, and Flooding	EM		X		Jul 20
SCA* – Watch Fire	DR	X	X	X	Aug 16
VT – Severe Storms and Flooding	DR		X	X	Aug 21
PA – Tropical Cyclone Debby	DR	X		X	Aug 23
CTBYN** – Wildfires	DR	X	X	X	Aug 23
SRMT*** – Severe Storm and Flooding	DR		X	X	Aug 26
IL – Severe Storms, Tornadoes, Straight-line Winds, and Flooding	DR	X		X	Aug 28
VT – Severe Storms, Flooding, Landslides, and Mudslides	DR	X	X	X	Aug 28
NE – Severe Storms, Straight-line Winds, Tornadoes, and Flooding	DR		X	X	Aug 29
KS – Severe Storms, Straight-line Winds, Tornadoes, and Flooding	DR		X	X	Sep 3
NE – Severe Storms, Straight-line Winds, Tornadoes, and Flooding	DR		X	X	Sep 6

* San Carlos Apache Tribe

** Confederated Tribes and Bands of the Yakama Nation

*** Saint Regis Mohawk Tribe



FEMA



FEMA

Helping people before, during, and after disasters.



Scan to subscribe to this briefing.