



FEMA

Daily Operations Briefing

Wednesday, September 9, 2020

8:30 a.m. ET

National Current Operations and Monitoring



FEMA

Significant Incidents or Threats:

- Heavy rain and flash flooding possible – [Southern Plains](#)
- Critical fire weather – [Pacific Northwest to California, Central Great Basin, and Southwest](#)
- Wildfires
- Tropical Cyclone Laura Response - [FINAL](#)
- COVID-19

Tropical Activity:

- Atlantic:
 - Tropical Cyclone Paulette
 - Tropical Cyclone Rene
 - Disturbance 1: Low ([30%](#))
 - Disturbance 2: High ([80%](#))
- Eastern Pacific:
 - Disturbance 1 – Low ([20%](#))
 - [Disturbance 2 – Low \(20%\)](#)
- Central Pacific: No new tropical cyclones expected during the next five days
- Western Pacific: No activity affecting U.S. interests

Declaration Activity: [FMAGs approved for CA \(2\), WA \(4\) and OR \(2\)](#)

Tropical Outlook – Atlantic

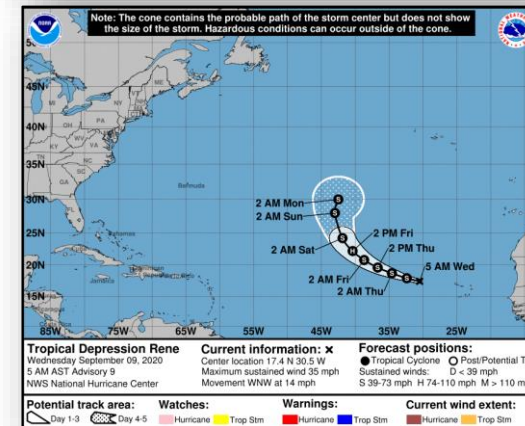


Tropical Cyclone Paulette (Advisory #10 as of 5:00 a.m. ET)

- 1,440 miles WNW of the Cabo Verde Islands
- Moving W at 8 mph
- Maximum sustained winds 60 mph
- Gradual weakening is expected on Thursday and Friday
- Tropical storm force winds extend 175 miles

Tropical Cyclone Rene (Advisory #9 as of 5:00 a.m. ET)

- 440 miles WNW of Cabo Verde Islands
- Moving WNW at 14 mph
- Maximum sustained winds 35 mph
- Expected to become a hurricane in a couple of days



Tropical Outlook – Atlantic



Disturbance 1 (as of 8:00 a.m. ET)

- 375 miles SE of Wilmington, NC
- Forecast to move NW at 10-15 mph
- Some development is possible before it moves inland over eastern NC Friday afternoon
- Formation chance through 48 hours: Low (30%)
- Formation chance through 5 days: Low (30%)

Disturbance 2 (as of 8:00 a.m. ET)

- Forecast to emerge off the west coast of Africa on Thursday
- Moving W across the eastern tropical Atlantic
- A tropical depression is likely to form late this week or over the weekend
- Formation chance through 48 hours: Medium (40%)
- Formation chance through 5 days: High (80%)



Tropical Outlook – Eastern Pacific

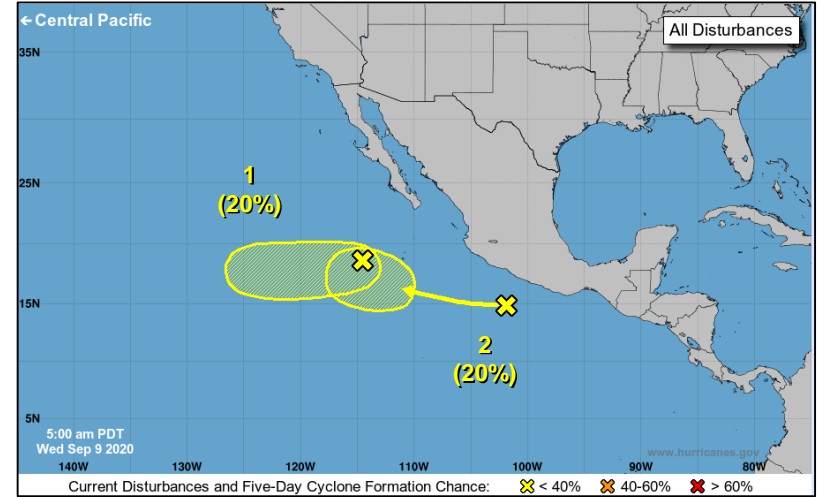


Disturbance 1 (as of 8:00 a.m. ET)

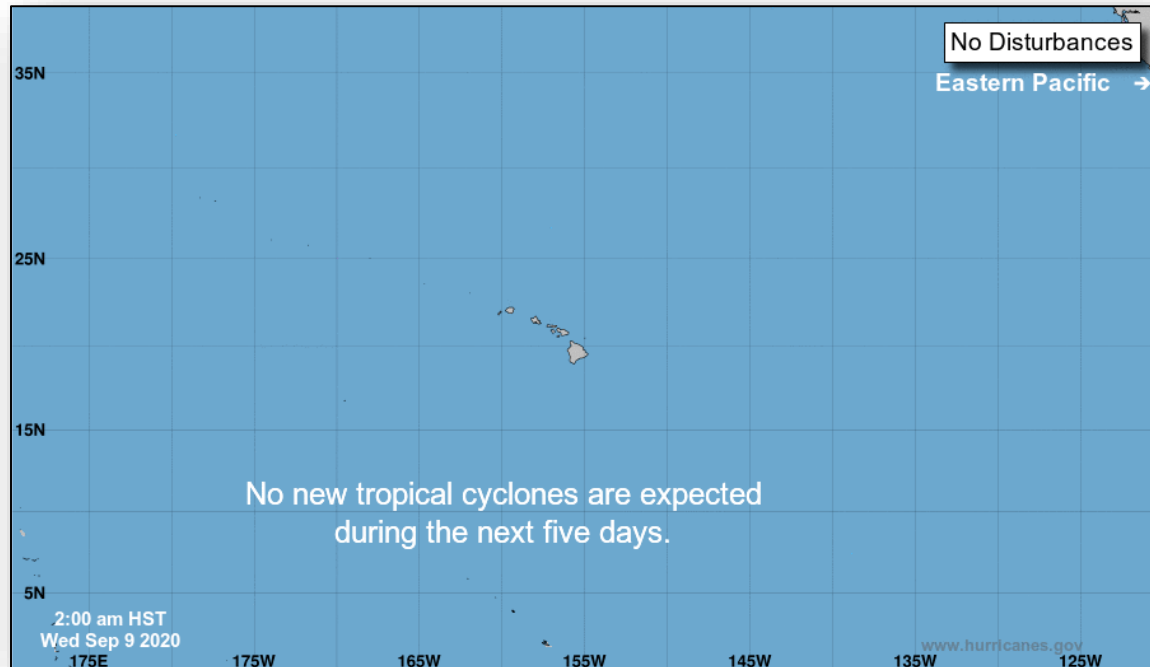
- 400 miles SW of the southern tip of Baja California Peninsula, Mexico
- Moving slowly W
- Marginally conducive for some development during the next several days
- Formation chance through 48 hours: Low (10%)
- Formation chance through 5 days: Low (20%)

Disturbance 2 (as of 8:00 a.m. ET)

- Several hundred miles S and SW of the coast of southern Mexico
- Moving slowly WNW away from the coast of Mexico
- Some gradual development is possible through early next week
- Formation chance through 48 hours: Low (near 0%)
- Formation chance through 5 days: Low (20%)



Tropical Outlook – Central Pacific



Wildfire Summary



Fire Name (County, ST)	FMAG #	Acres Burned	Percent Contained	Evacuations	Structures (Homes / Other)			Fatalities / Injuries
					Threatened	Damaged	Destroyed	
California (3)								
CZU Lightning Complex (Santa Cruz & San Mateo, CA)	5336-FM-CA	86,509	81% (+1)	M: 4,379	H: 7,647	H: 90	H: 931	1 / 1
				V: 0	O: 0	O: 50	O: 559	
Creek (Fresno & Madera, CA)	5348-FM-CA	152,833 (+17,310)	0%	M: 11,936 (+50)	H: 5,046	H: 0	H: 338 (+293)	0 / 21
				V: 0	O: 250	O: 0	O: 22 (+2)	
El Dorado (San Bernardino, CA)	5350-FM-CA	11,259 (+1,588)	19% (+12)	M: 21,000	H: 17,250	H: 0	H: 0	0 / 2
				V: 0	O: 275	O: 0	O: 1	
Oregon (2)								
White River (Wasco, OR) - FINAL	5341-FM-OR	17,383 (-124)	70%	M: 244	H: 82	H: 0	H: 0	1 / 2
				V: 0	O: 0	O: 0	O: 0	
Two Four Two (Klamath, OR)	5354-FM-OR	10,000 (+9,000)	5% (+5)	M: 500	H: 500 (+400)	H: 12 (+12)	H: 6 (+6)	0 / 0
				V: 0	O: 752 (+752)	O: 26 (+26)	O: 13 (+13)	
Montana (1)								
Bridger Foothills (Gallatin, MT)	5346-FM-MT	7,138	0%	M: Unknown	H: 100	H: 0	H: 0	0 / 4
				V: 0	O: 0	O: 0	O: 0	
Colorado (1)								
Cameron Peak (Larimer, CO)	5349-FM-CO	102,596 (+6,134)	4%	M: 8,634	H: 3,577	H: 0	H: 0	0 / 7 (+7)
				V: 0	O: 4	O: 0	O: 1	

(Evacuations: M = Mandatory / V = Voluntary; Structures: H = Homes and Mixed Commercial/Residential / O = Non-residential Commercial/Other Minor Structures)

Wildfire Summary



FEMA

Fire Name (County, ST)	FMAG #	Acres Burned	Percent Contained	Evacuations	Structures (Homes / Other)			Fatalities / Injuries
					Threatened	Damaged	Destroyed	
Utah (1)								
Ether Hollow (Utah, UT)	5353-FM-UT	600 (-400)	0%	M: 500	H: 500	H: 0	H: 0	0 / 0
				V: 0	O: 100 (+100)	O: 0	O: 0	
Washington (3)								
Cold Springs/Pearl Hill (Douglas and Okanogan, WA)	5351-FM-WA	323,000 (+223,000)	10% (+10)	M: 500	H: 720 (+290)	H: 0	H: 18 (+18)	0 / 0
				V: 0	O: 340 (+340)	O: 0	O: 37 (+37)	
Apple Acres (Chelan, WA)	5352-FM-WA	2,500	0%	M: Unknown	H: 20 (-287)	H: 0	H: 0	0 / 0
				V: 0	O: 0	O: 0	O: 0	
Babb (Spokane and Whitman, WA)	5355-FM-WA	8,000	0%	M: 250	H: 80 (-145)	H: 0	H: 0	0 / 0
				V: 0	O: 60 (+60)	O: 0	O: 0	

(Evacuations: M = Mandatory / V = Voluntary; Structures: H = Homes and Mixed Commercial/Residential / O = Non-residential Commercial/Other Minor Structures)

Beachie Creek Lionshead Complex – OR



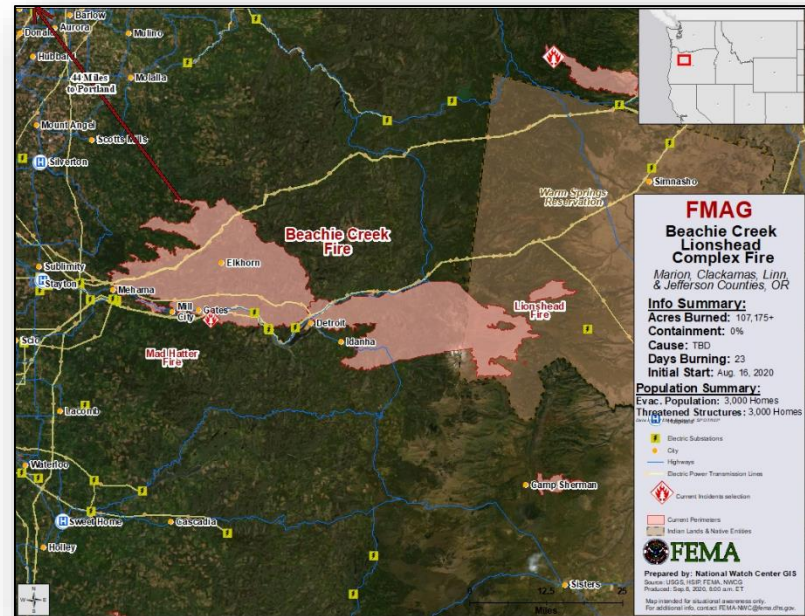
Fire Name (County, ST)	FMAG #	Acres Burned	Percent Contained	Evacuations	Structures (Homes / Other)			Fatalities / Injuries
					Threatened	Damaged	Destroyed	
Beachie Creek Lionshead Complex (Marion, Clackamas, Linn and Jefferson counties, OR)	5356-FM-OR	107,175	0%	M: Unknown V: Unknown	H: 3,000 O: 0	H: 0 O: 0	H: 0 O: 0	0 / 2

Current Situation:

- The fire began August 16, and is burning on federal, state, private and tribal land (Warm Springs Reservation)
- The complex includes the Mad Hatter and Wilhort Fires, along with several unnamed fires
- Threatening 3,000 homes in and around the communities of Detroit, Mill City, Gates, Sublimity, Stayton, and Idanha (total population unknown)
- The communities of Mill City, Gates and Lions have been fully engulfed by the fires with unknown loss of life and structure
- Also threatening critical infrastructure including Detroit Lake, which is the water source for the city of Salem, OR
- Mandatory and voluntary evacuations for unknown number of people
- Due to road closures, the city of Detroit is sheltering in place and cannot evacuate; the state is considering military extraction for these residents

Response:

- OR EOC at Full Activation (COVID-19)
- Region X and Bothell MOC continue to monitor
- NWC continues to monitor
- FMAG was approved September 8



Holiday Farm Fire – OR



FEMA

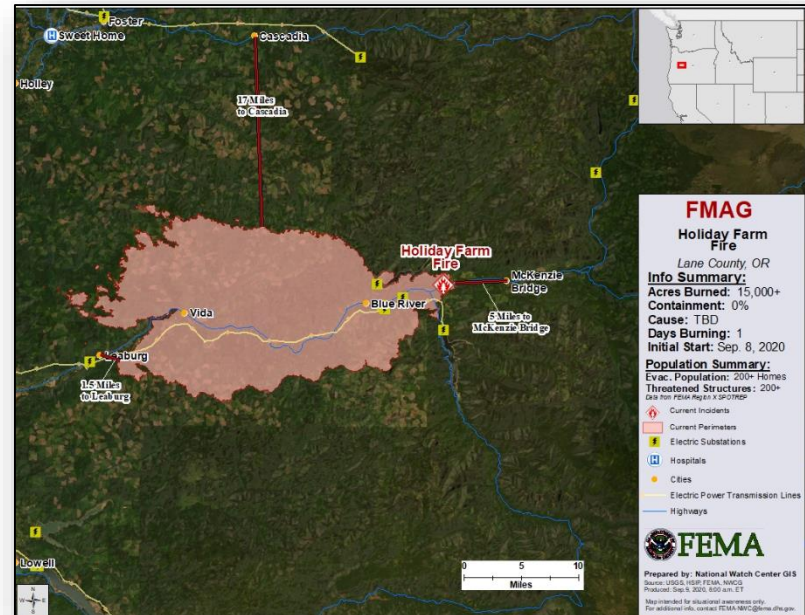
Fire Name (County, ST)	FMAG #	Acres Burned	Percent Contained	Evacuations	Structures (Homes / Other)			Fatalities / Injuries
					Threatened	Damaged	Destroyed	
Holiday Farm (Lane County, OR)	5357-FM-OR	15,000	0%	M: radius of 28 miles V: 0	H: 200+ O: 0	H: 0 O: 0	H: 0 O: 0	0 / 0

Current Situation:

- The fire began on September 8, 2020 and is burning on federal and private land
- Threatening over 200 homes in and around the communities of Blue River, Vida, Leaburg, and Thurston Hill (total population unknown)
- The community of Blue River has been fully engulfed and the fire is spreading rapidly to the east, within less than 8 miles from the town of Vida
- Also threatening a fire station, Highway 126, transmission lines and multiple small businesses in the area.
- Mandatory and voluntary evacuations in effect for 28 miles
- Response has been conducting life safety missions as conditions are not conducive to firefighting

Response:

- OR EOC at Full Activation (COVID-19)
- Region X and Bothell MOC continue to monitor
- NWC continues to monitor
- FMAG was approved September 8



Powerline Fire – OR



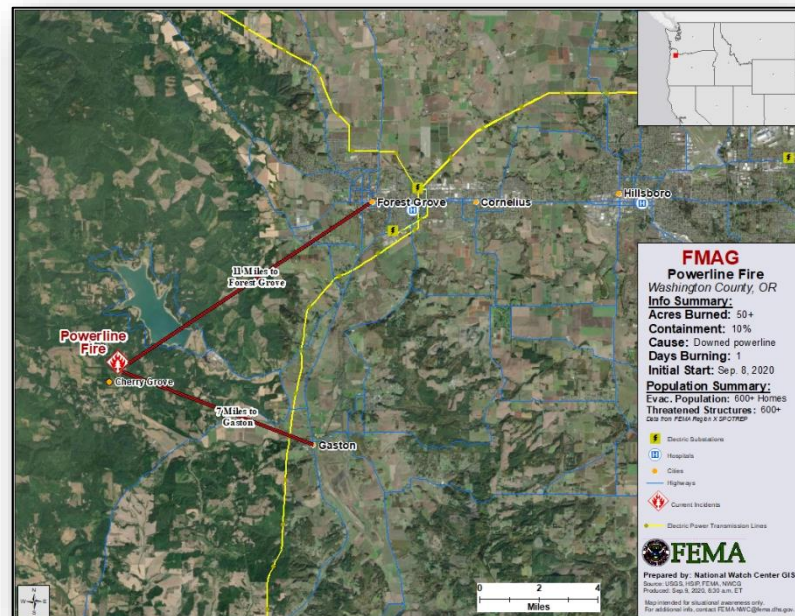
Fire Name (County, ST)	FMAG #	Acres Burned	Percent Contained	Evacuations	Structures (Homes / Other)			Fatalities / Injuries
					Threatened	Damaged	Destroyed	
Powerline Fire (Washington County, OR)	5358-FM-OR	50	10%	M: 600 homes V: 0	H: 600 O: 0	H: 0 O: 0	H: 0 O: 0	0 / 0

Current Situation:

- The fire began on September 8, 2020 and is burning on private land
- Threatening homes in and around the community of Cherry Grove (population unknown)
- Also threatening a flow water sand filter plant that provides water resources to the larger Hillsboro area, the Stimpson Mill, and Henry Hagg Lake
- Mandatory evacuations in effect for 600 homes
- 50 acres burned; 10% contained

Response:

- OR EOC at Full Activation (COVID-19)
- Region X and Bothell MOC continue to monitor
- NWC continues to monitor
- FMAG was approved September 8



Bordeaux Road Fire – WA



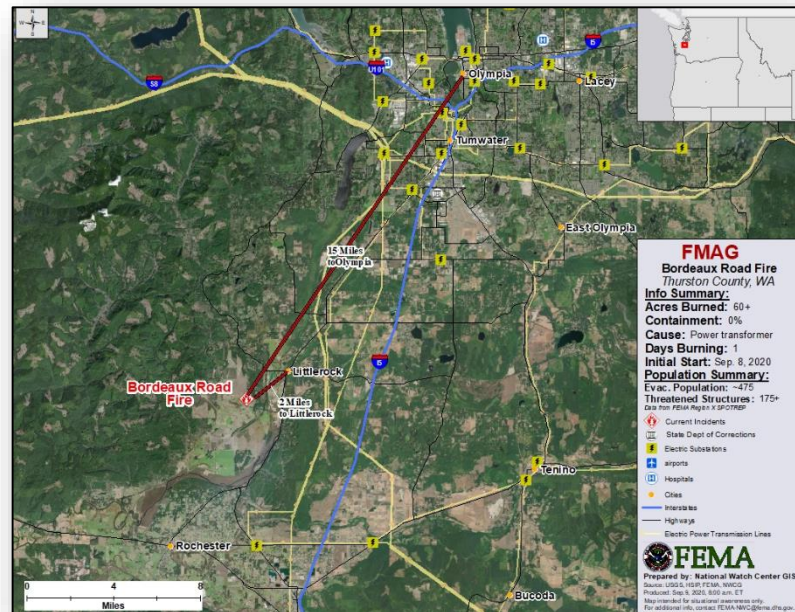
Fire Name (County, ST)	FMAG #	Acres Burned	Percent Contained	Evacuations	Structures (Homes / Other)			Fatalities / Injuries
					Threatened	Damaged	Destroyed	
Bordeaux Road Fire (Thurston County, WA)	5359-FM-WA	60	0%	M: 475 V: 0	H: 175 O: 0	H: 0 O: 0	H: 5 O: 0	0 / 0

Current Situation:

- The fire began on September 8, and is burning on private land 12 miles southwest of the city of Olympia
- Threatening homes in and around the town of Littlerock (pop 928)
- Also threatening electrical utilities, agricultural resources, and a Washington State Department of Corrections prison facility
- Mandatory evacuations in effect for 475 people

Response:

- WA EOC at Full Activation (COVID-19)
- Region X and Bothell MOC continue to monitor
- NWC continues to monitor
- FMAG was approved September 9



Slater Fire – CA



FEMA

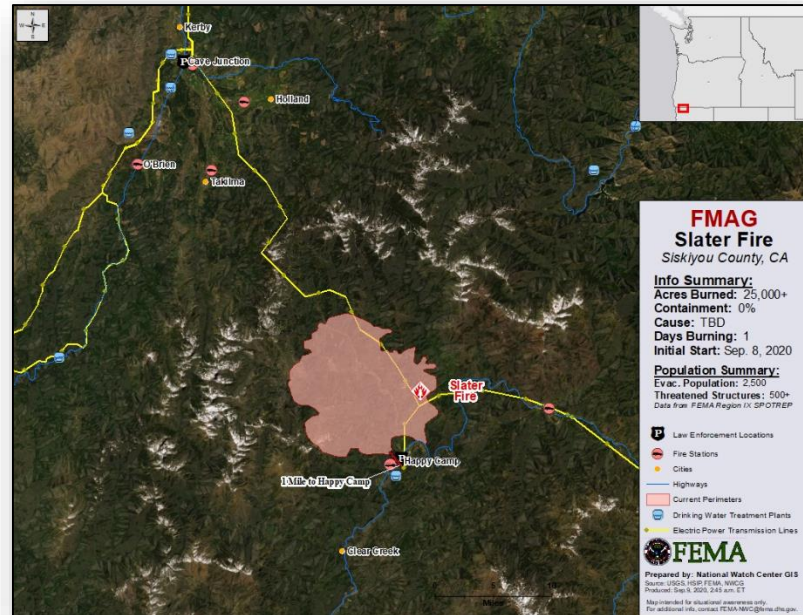
Fire Name (County, ST)	FMAG #	Acres Burned	Percent Contained	Evacuations	Structures (Homes / Other)			Fatalities / Injuries
					Threatened	Damaged	Destroyed	
Slater Fire (Siskiyou County, CA)	5361-FM-CA	25,000	0%	M: 2,500 V: 0	H: 500 O: 0	H: 0 O: 0	H: 0 O: 0	0 / 0

Current Situation:

- The fire began on Sep 8, 2020 and is burning on Federal, State, and private land in and around the community of Happy Camp (pop 2,500).
- Threatening homes in and around Happy Camp (pop 2,500)
- Also threatening the local water treatment facility, local telephone service provider, and CHP, Sherriff, and USFS stations
- Mandatory evacuations in effect for 2,500 people

Response:

- CA EOC at Full Activation (COVID-19 and wildfires)
- Region IX RWC continues to monitor
- NWC continues to monitor
- FMAG was approved September 9



Sumner Grade Fire – WA



FEMA

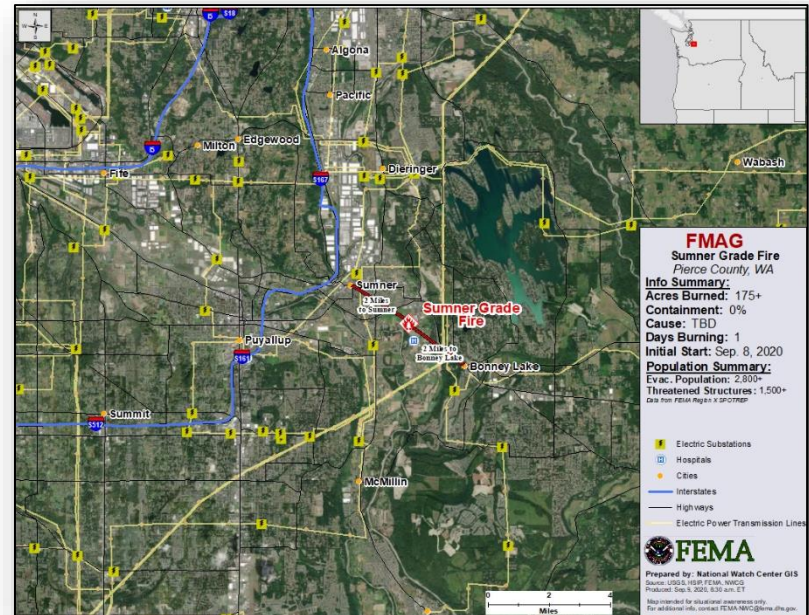
Fire Name (County, ST)	FMAG #	Acres Burned	Percent Contained	Evacuations	Structures (Homes / Other)			Fatalities / Injuries
					Threatened	Damaged	Destroyed	
Sumner Grade Fire (Pierce County, WA)	5360-FM-WA	175	0%	M: 2,800 V: 0	H: 1,500 O: 0	H: 0 O: 0	H: 10 O: 0	0 / 0

Current Situation:

- The fire began on Sep 8, 2020 and is burning on private land in Pierce County, between the cities of Sumner and Bonney Lake (combined pop. 31,265)
- Threatening 1,500 homes, electrical utilities, agricultural resources, businesses and recreational facilities
- Mandatory evacuations in effect for 2,800 people

Response:

- WA EOC at Full Activation (COVID-19)
- Region X and Bothell MOC continue to monitor
- NWC continues to monitor
- FMAG was approved September 9



Echo Mountain & Kimberling Road Complex Fire – OR



FEMA

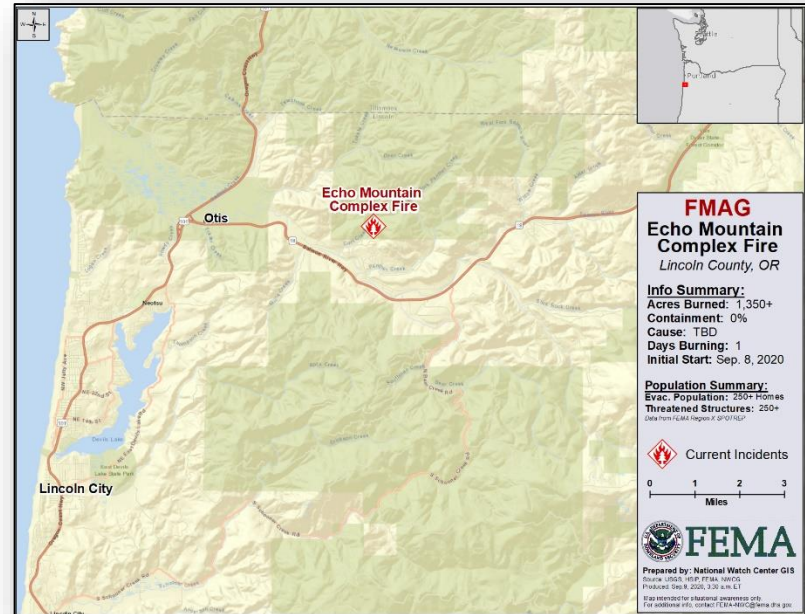
Fire Name (County, ST)	FMAG #	Acres Burned	Percent Contained	Evacuations	Structures (Homes / Other)			Fatalities / Injuries
					Threatened	Damaged	Destroyed	
Echo Mountain and Kimberling Road Complex Fire (Lincoln County, OR)	5362-FM-OR	1,350	0%	M: 2,800 V: 0	H: 250 O: 0	H: 0 O: 0	H: 10 O: 0	0 / 0

Current Situation:

- The complex consists of the Echo Mountain Complex, Kimberling Mountain Road Fire, and additional unnamed fires burning in Lincoln County
- The fire began on Sep 8, 2020 and is burning on federal and private land
- Threatening over 250 homes in and around the communities of the town of Otis (pop 3,435)
- Also threatening homes near Highway 18, Panther Creek, Rose Ledge, and Willis Creek
- Mandatory and voluntary evacuations in effect for at least 250 homes

Response:

- OR EOC at Full Activation (COVID-19)
- Region X and Bothell MOC continue to monitor
- NWC continues to monitor
- FMAG was approved September 9



Bear Fire – CA



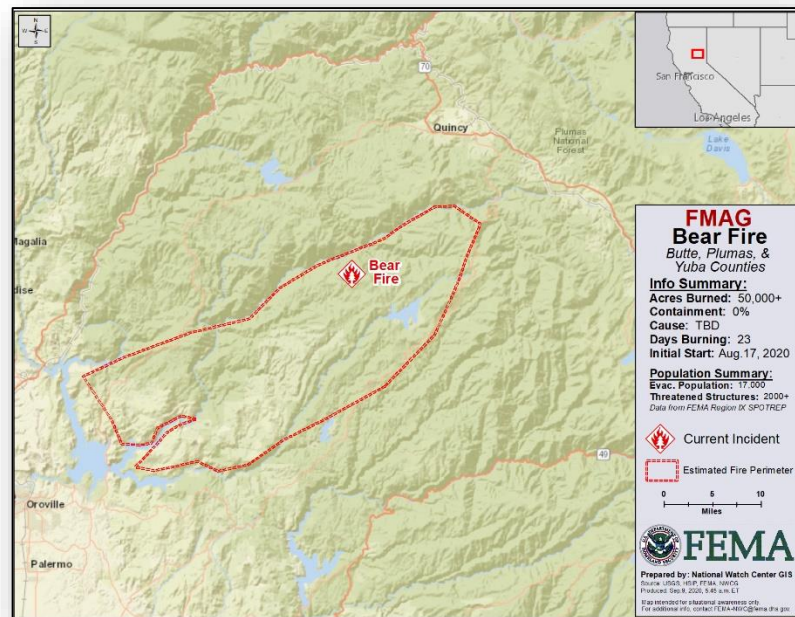
Fire Name (County, ST)	FMAG #	Acres Burned	Percent Contained	Evacuations	Structures (Homes / Other)			Fatalities / Injuries
					Threatened	Damaged	Destroyed	
Bear Fire (Butte, Plumas, & Yuba counties, CA)	5363-FM-CA	50,000	0%	M: 13,000 V: 0	H: 2,000 O: 0	H: 0 O: 0	H: 0 O: 0	0 / 0

Current Situation:

- The fire began on August 17, 2020, and is burning on federal, state, and private land
- Threatening 2000 homes in and around communities in Butte, Plumas, and Yuba counties (combined population over 13,000)
 - Butte County: Oroville, Feather Falls, Forbestown, and Clipper Mills
 - Plumas County: LaPorte, Little Grass Valley, and Cascade
 - Yuba County: Strawberry Valley and Rackerby
- Also threatening the Lake Oroville Dam and associated power generation/transmission lines, multiple fire stations and schools, radio and emergency services communications towers, and Plumas National Forest
- Mandatory evacuations in effect for 13,000 people, voluntary evacuations in effect for 4,000 people

Response:

- CA EOC at Full Activation (COVID-19 and wildfires)
- Region IX RWC continues to monitor
- NWC continues to monitor
- FMAG was approved September 9



COVID-19 Update



FEMA

Situation: Upward trajectory in COVID-19 case count continues across 23 (+2) states/territories, with 8 (-3) states/territories in a plateau status, and 24 states/territories on a downward trajectory. 20,247 (-281) Federal employees deployed / activated; 1,737 (+9) FEMA employees deployed. (COVID-19 SLB, as of Sep 8)

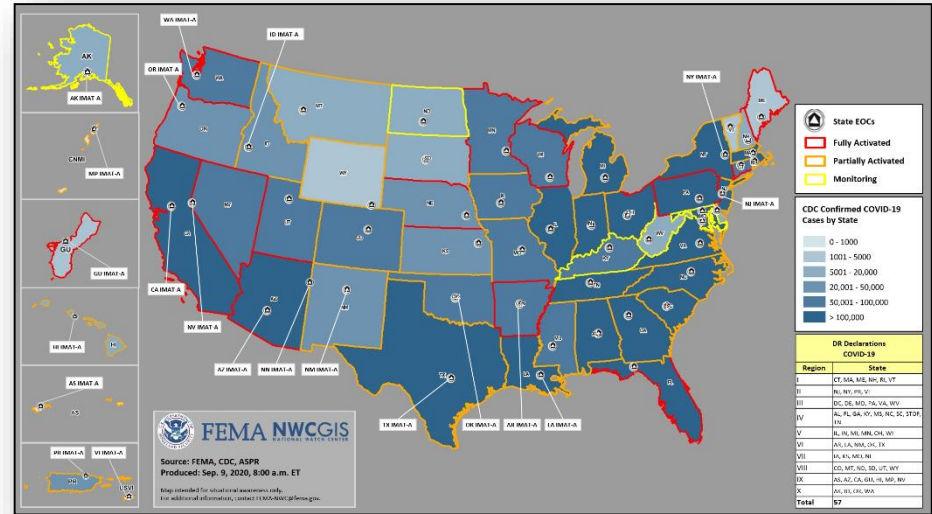
Nationwide Testing: 92,408,234 (+3,046,069) cumulative (as of Sep 8)

COVID-19 positive cases continue to increase globally (CDC COVID-19 update as of Sep 8)

- Confirmed Cases of COVID-19
 - United States: 6,287,362 (+26,146)
 - Worldwide: 27,236,916 (+242,474)
- Deaths caused by COVID-19
 - United States: 188,688 (+175)
 - Worldwide: 890,392 (+9,398)

Response:

- NRCC conducting COVID response operations
- Regions I, II, III, V, VI, & X RRCCs at Level III
- Regions IV, VII, VIII, & IX RRCCs are rostered
- Regions VII, VIII, & IX COVID-19 working from the Virtual JFO
- NWC, all RWCs, and MOCs are monitoring



Tropical Cyclone Laura – Response - FINAL



Situation: Power outages are decreasing but restoration rate is slowing as long-term repairs begin. Generators requested from the state are increasing. Water systems are stabilizing. (FEMA-4559-DR-LA SLB as of 11:00 a.m. ET, Sep 8)

Safety and Security

- Mandatory evacuations for 2 parishes; voluntary evacuations for 6 parishes

Food, Water, Shelter

- 12,730 (-2) occupants in congregate and non-congregate shelters
- 48 (-5) public water system outages affecting 16k (-24k) customers; boil water advisories for 93 (+3) systems affecting 327k (+23k) customers

Health and Medical

- Fatalities: 25 confirmed storm-related
- 10 hospitals evacuated, 7 (+1) on generator power; 5 nursing homes evacuated, 5 on generator power

Energy: (EAGLE-I as of 6:00 a.m. ET, Sep 9)

- Customers without power: 123k (-9k)
- 91% of power outages in LA are in Calcasieu, Cameron, Beauregard parishes
- USACE assessed 126 (+24) facilities for power
- 156 (-6) generators placed in the field; 184 (-11) generators requested
- FEMA delivered 124 (+40) generators to USACE

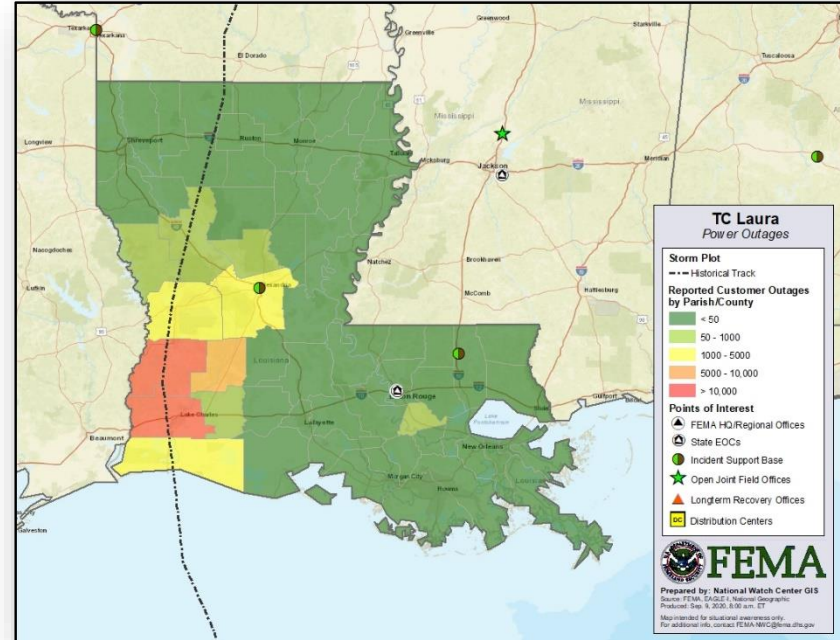
Communications:

- Cell sites: 80.54% (+4.38) operational; 106 sites on back-up power

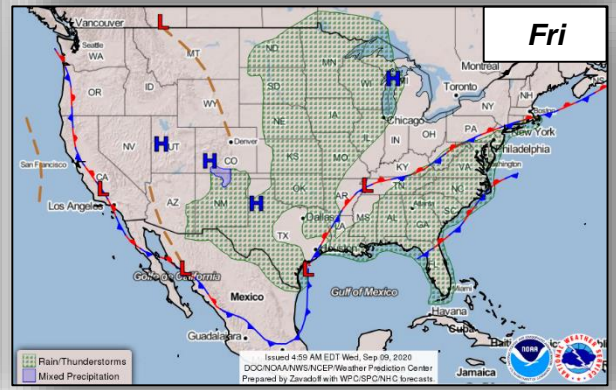
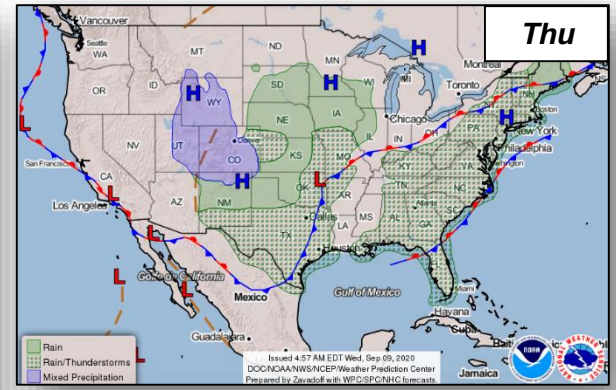
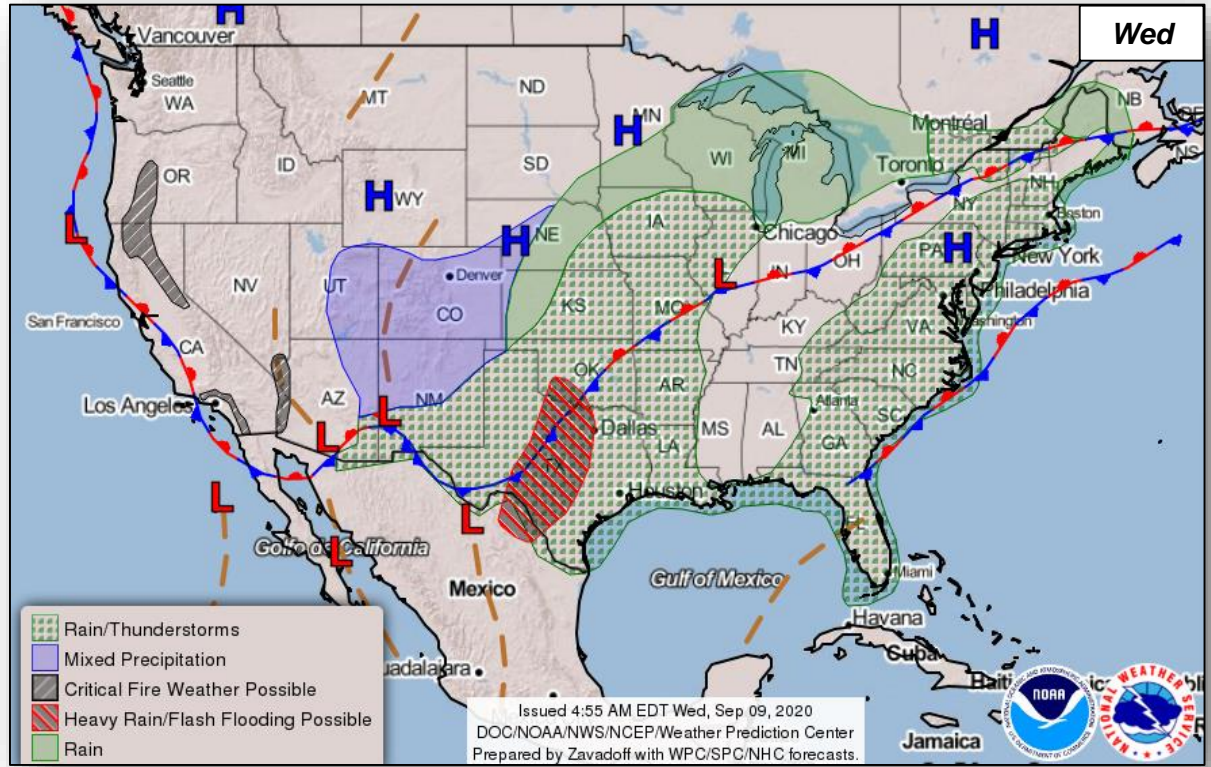
Federal Response:

- NRCC remains activated for COVID-19 response operations
- N-IMATs Red & White, and Regions I, V, and VI-2 IMATs deployed to LA
- SMTs (2) deployed to LA
- MERS deployed to Baton Rouge, Pineville, and Lake Charles, LA

LA



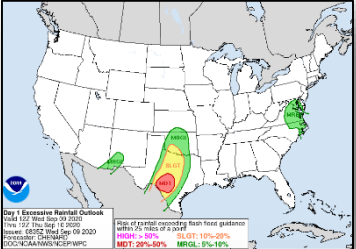
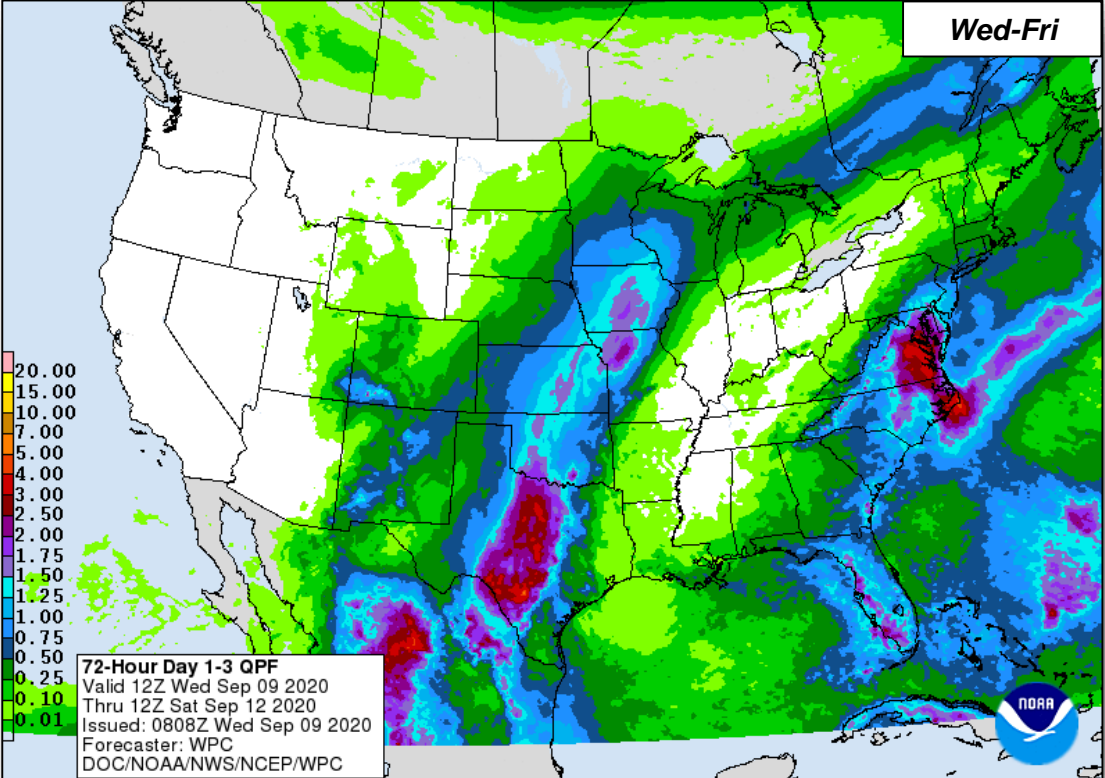
National Weather Forecast



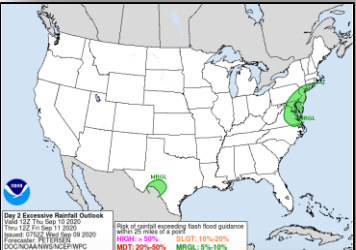
Precipitation & Excessive Rainfall



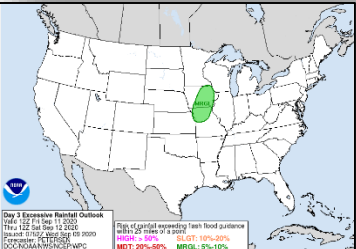
FEMA



Wed

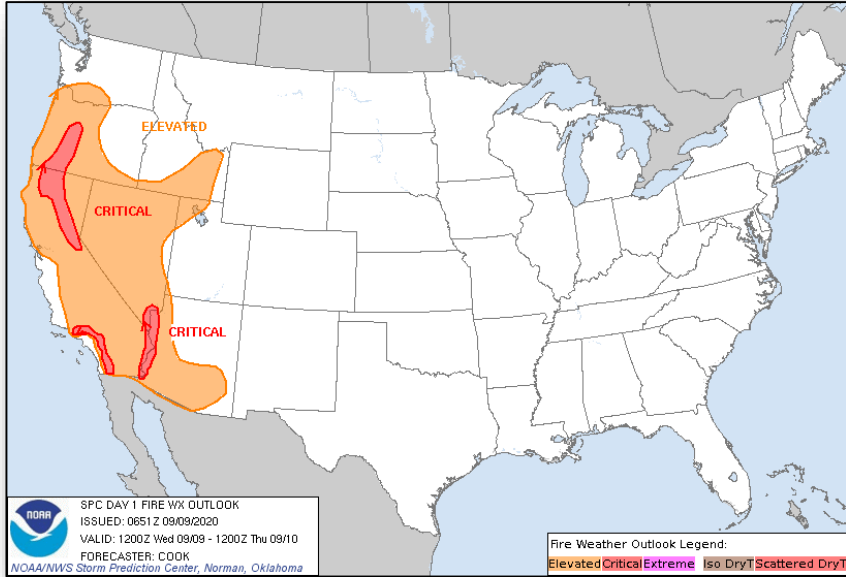


Thu

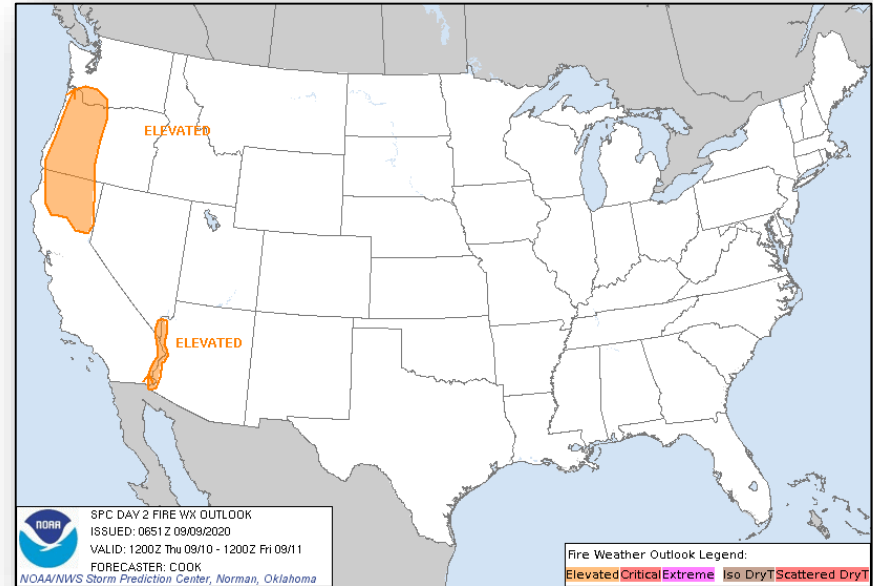


Fri

Fire Weather Outlook



Today

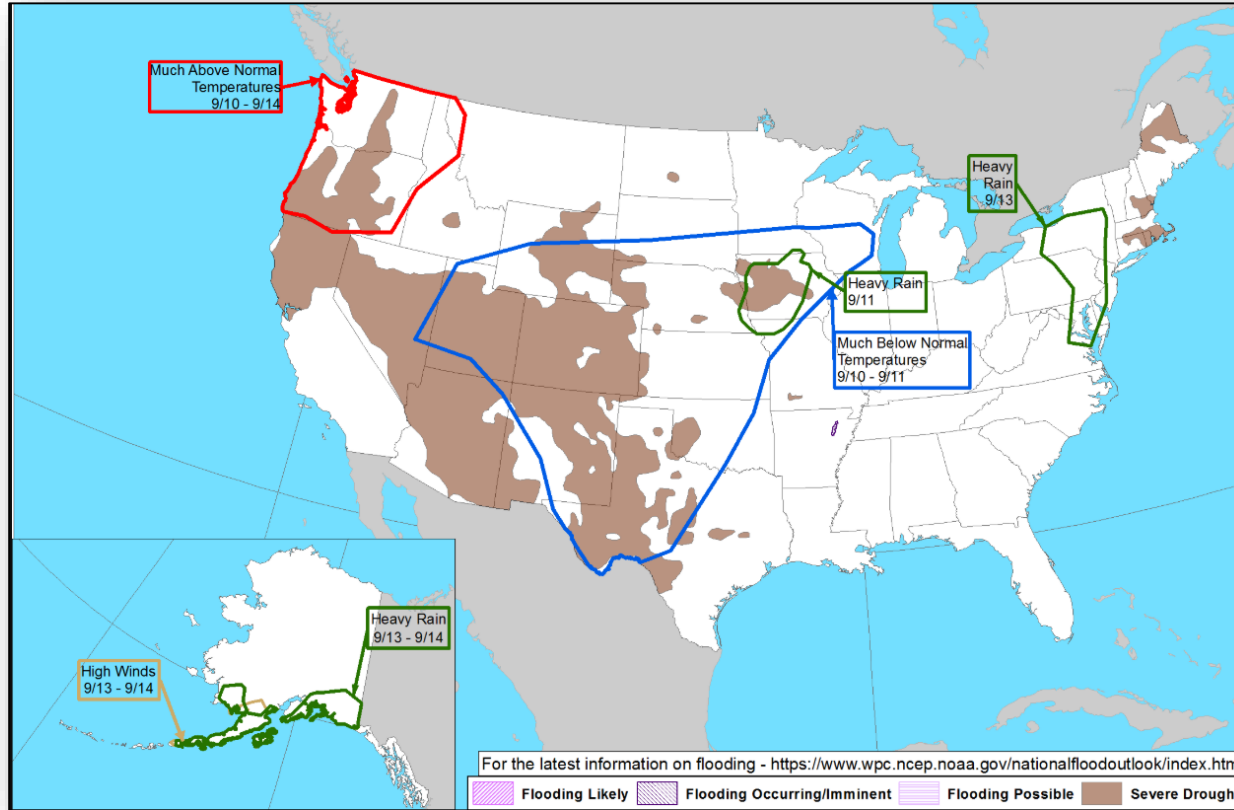


Tomorrow

Hazards Outlook – Sep 10-14



FEMA



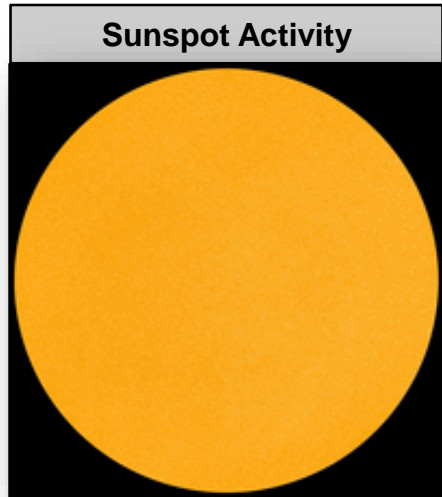
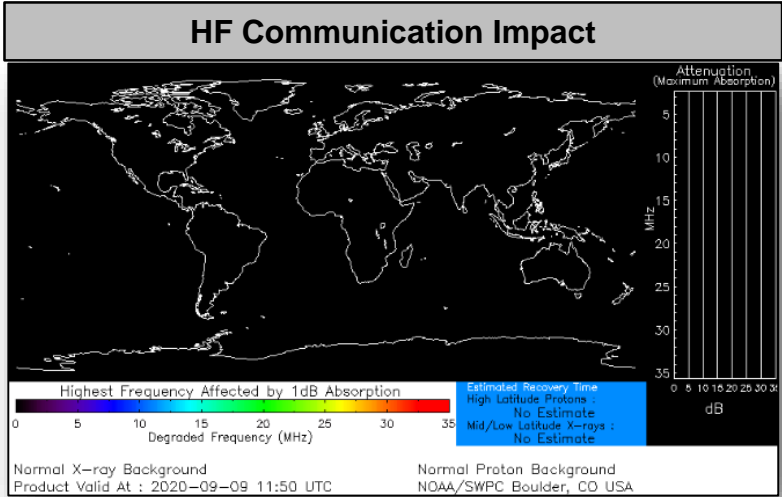
Space Weather



FEMA

	Space Weather Activity	Geomagnetic Storms	Solar Radiation	Radio Blackouts
Past 24 Hours	None	None	None	None
Next 24 Hours	None	None	None	None

For further information on NOAA Space Weather Scales refer to: <http://www.swpc.noaa.gov/noaa-scales-explanation>
 For further information on Sunspot Activity refer to: <https://www.swpc.noaa.gov/phenomena/sunspotssolar-cycle>



Joint Preliminary Damage Assessments



Region	State / Location	Event	IA	Number of Counties		Start – End
			PA	Requested	Complete	
I	CT	Tropical Storm Isaias Aug 4	IA	8	6	8/27 – TBD
			PA	8	0	8/27 – TBD
II	NY	Tropical Storm Isaias Aug 4	IA	0	0	N/A
			PA	8	2	8/25 – TBD
III	DE	Tornado Aug 7	IA	0	0	N/A
			PA	1	0	8/29 – TBD
	MD	Tropical Storm Isaias Aug 4-5	IA	0	0	N/A
			PA	3	0	8/21 – TBD
	PA	Tropical Storm Isaias Aug 4-5	IA	9	0	8/26 – TBD
			PA	11	0	8/26 – TBD
IV	NC	Hurricane Isaias Aug 3	IA	0	0	N/A
			PA	16	2	8/18 – TBD
VI	TX	Hurricane Hanna Jul 25 and continuing	IA	6	6	7/29 – 8/20
			PA	6	0	7/29 – TBD
		Hurricane Laura Aug 23 and continuing	IA	0	0	N/A
			PA	6	0	9/2 – TBD
	LA	Hurricane Laura Aug 23-27	IA	0	0	N/A
			PA	25	6	9/2 – TBD

Declaration Requests in Process – 8



FEMA

State / Tribe / Territory – Incident Description	Type	IA	PA	HM	Requested
Poarch Band of Creek Indians – COVID-19 Pandemic	DR	X	X		5/15
LA – Severe Storm and Tornadoes	DR		X	X	7/10
Sac & Fox Tribe of the Mississippi of Iowa – Severe Weather	DR	X	X	X	8/14
PR – Tropical Storm Isaias	DR	X			8/21
DE – Tropical Storm Isaias	DR	X	X	X	8/31
ND – Severe Storms and Flooding	DR		X	X	8/31
NY – Tropical Storm Isaias	DR		X	X	9/3
MD – Tropical Storm Isaias	DR		X	X	9/3



FEMA Common Operating Picture

FEMA HQ	
NWC	NRCC
Monitoring	Level II

FEMA REGIONS		
WATCH	RRCC	
Monitoring	I	Level III
Alt Location	II	Level III
Monitoring	III	Level III
Monitoring	IV	Rostered
Monitoring	V	Level III
Monitoring	VI	Level III
Alt. Location	VII	Rostered
Monitoring	VIII	Rostered
Monitoring	IX	Rostered
Monitoring	X	Level III

Notes:

NRCC: COVID-19 Response Operations

Activated RRCCs: COVID-19

Region IV: Equipment

All EOCs activated for COVID-19

CA: Wildfires
 CT: Isaias
 IA: Derecho
 PR: Earthquakes
 UT: Flooding
 AR, LA, & TX: TC Laura

Major Disasters (DR): 109
 Emergency Disasters (EM): 108

★ JFOs: 9 / VJFOs: 16

★ Staging Area

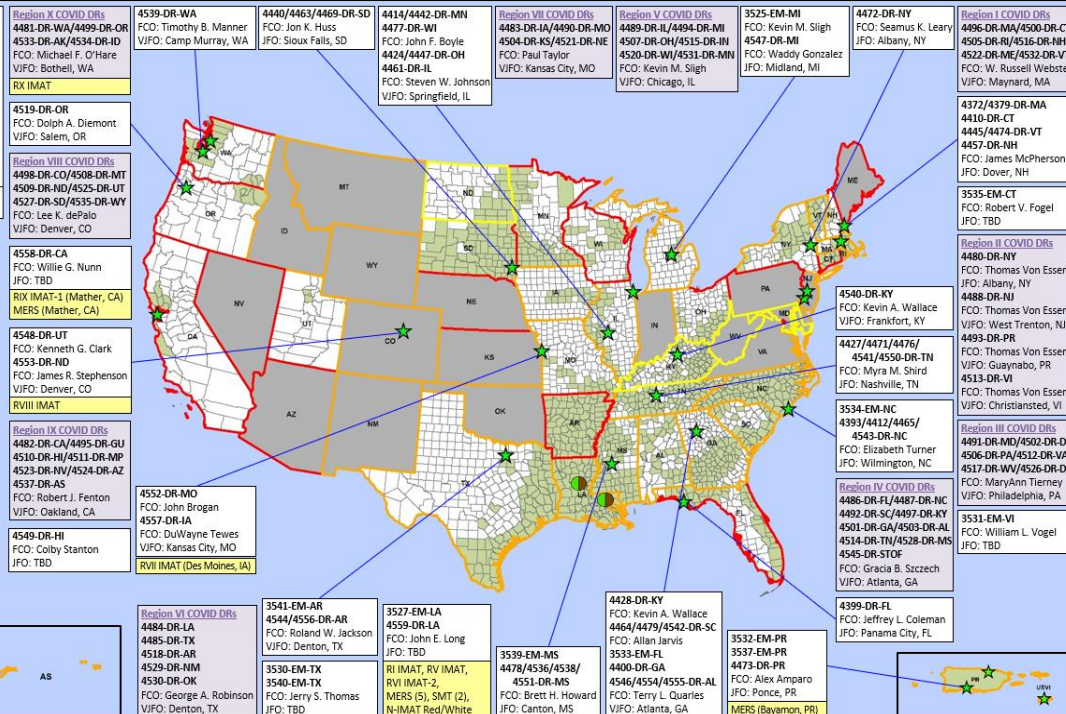
■ Declared County (non-COVID-19 Declarations)

■ Fully Activated

■ Partially Activated

■ Monitoring

As of 8:00 a.m. ET September 9, 2020
 Created by FEMA NWC



N-IMATs	
2 Teams	
Red	LA
Blue	
Gold	

R-IMATs	
4-6 Teams	
I	LA
II	
III	
IV-1	
IV-2	
V	LA
VI-1	
VI-2	LA
VII	
VIII	(1) VJFO
IX-1	CA
IX-2	
X	RRCC

Team:	US&R	MERS	FCOs	FDRCS	IM WORKFORCE
Status	>66%	>66%	≤1 Type I	= 1	
Assigned:	28	36	46	10	13,904 ▲
Unavailable	7	0	2	0	3,078 ▼
Deployed:	0	5	39	9	6,439 ▼
Available:	21	31	5	1	4,387 / 32%▲

IM CADRE AVAILABILITY SUMMARY	
Cadres with 25% or Less Availability	
CVR	22% (17/79);
EA	25% (115/468);
EHP	19% (121/655);
FL	25% (25/169);
FM	24% (58/246);
HM	21% (254/1,233);
LOG	24% (309/1,334);
OPS	12% (39/323);
PA	23% (704/3,115);
SAF	16% (9/55)



FEMA

FEMA's mission is helping people before, during, and after disasters.

Click [here](#) to subscribe to this briefing
[FEMA.GOV](https://www.fema.gov)