

FEMA National Watch Center

Daily Operations Briefing

Sunday, September 8, 2024

8:30 a.m. ET



FEMA

National Current Ops / Monitoring

New Significant Incidents / Ongoing Ops

- No significant incidents / operations

Hazard Monitoring

- Heavy Rain / Flash Flooding – Gulf Coast, Southeast
- Tropical Activity:
 - Atlantic:
 - Disturbance 1: (AL91): High (90%)
 - Disturbance 2: (AL92): Medium (60%)
 - Disturbance 3: Medium (50%)
 - Eastern Pacific:
 - Disturbance 1: Medium (50%)
 - Central Pacific:
 - Disturbance 1: Low (20%)
 - Western Pacific:
 - Disturbance 1: (95W): Med

Disaster Declaration Activity

- FMAG Approval: Davis Fire – NV
- FMAG Approval: Line Fire – CA
- FMAG Approval: Rail Ridge Fire – OR

Event Monitoring

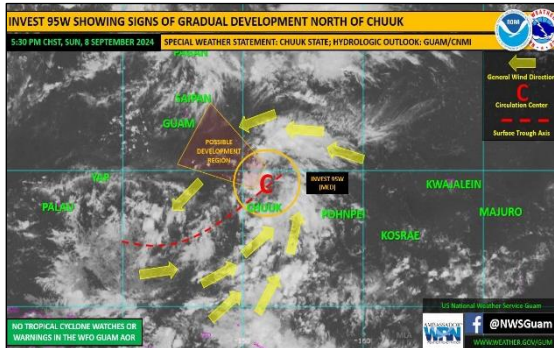
- No significant events



FEMA

Tropical Outlook

Western Pacific

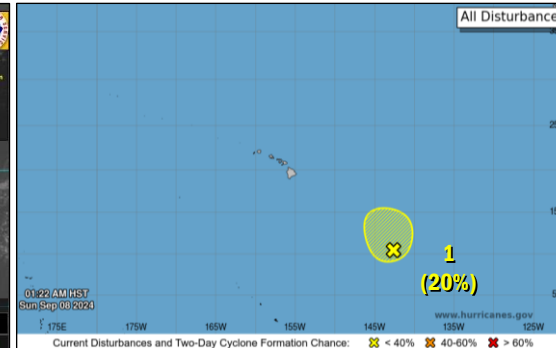


Disturbance 1 (95W): (as of 3:30 a.m. ET)

- Located 650 miles ESE of Guam
- Tropical Cyclone development is likely, but expected to occur beyond 24 hours

[ChST Timetable](#)

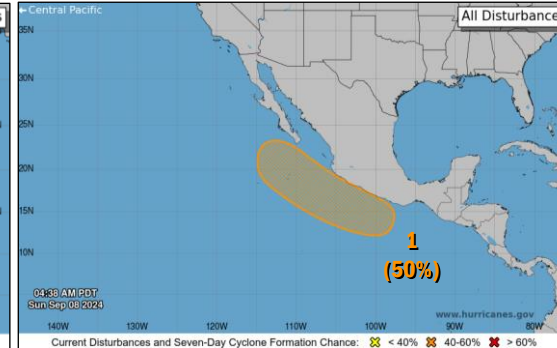
Central Pacific



Disturbance 1: (as of 8:00 a.m. ET)

- Located 1,100 miles SE of Hilo, HI
- Moving N
- Conditions are marginally conducive for development
- Formation chance: 48-hour – Low (10%); 7-day – Low (20%)

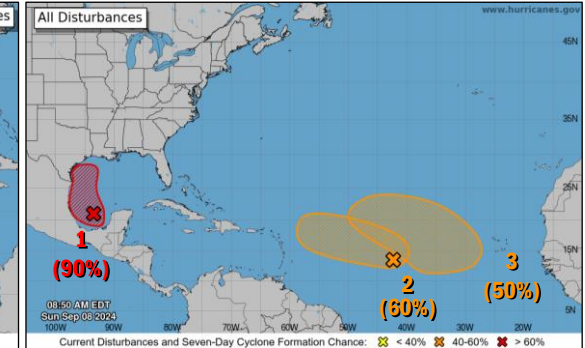
Eastern Pacific



Disturbance 1: (as of 8:00 a.m. ET)

- Located off the coast of southern Mexico
- Moving NW
- Gradual development is possible
- Formation chance: 48-hour – Low (near 0%); 7-day – Medium (50%)

Atlantic



Disturbance 1 (AL91): (as of 8:00 a.m. ET)

- Located over the Bay of Campeche
- Moving NW
- Tropical depression is likely to form during the next couple of days
- Formation chance: 48-hour – High (80%); 7-day – High (90%)

Disturbance 2: (AL92) (as of 8:00 a.m. ET)

- Located over the central tropical Atlantic
- Additional development is possible early next week
- Formation chance: 48-hour – Low (40%); 7-day – Medium (60%)

Disturbance 3: (as of 8:00 a.m. ET)

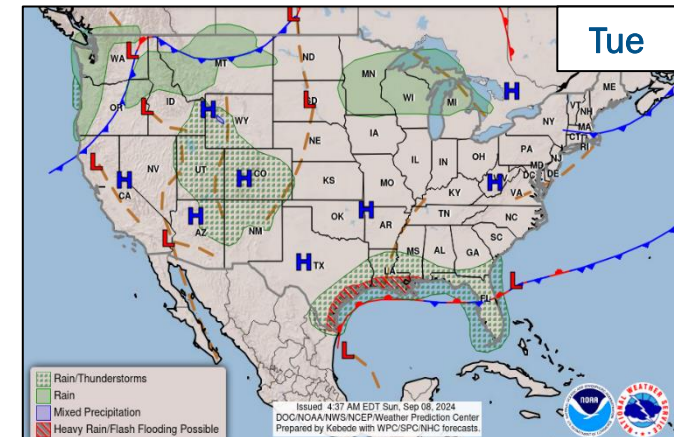
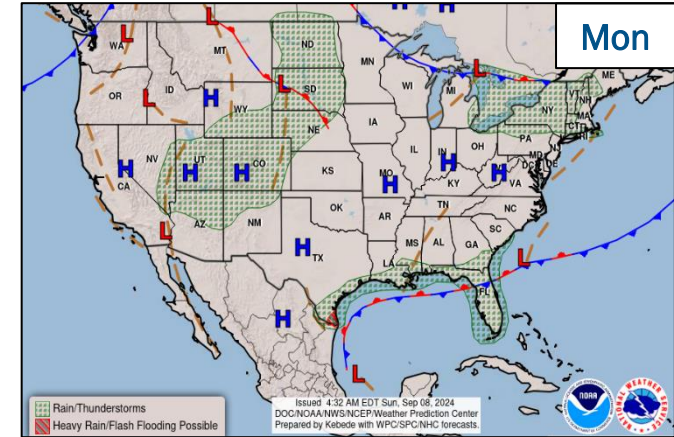
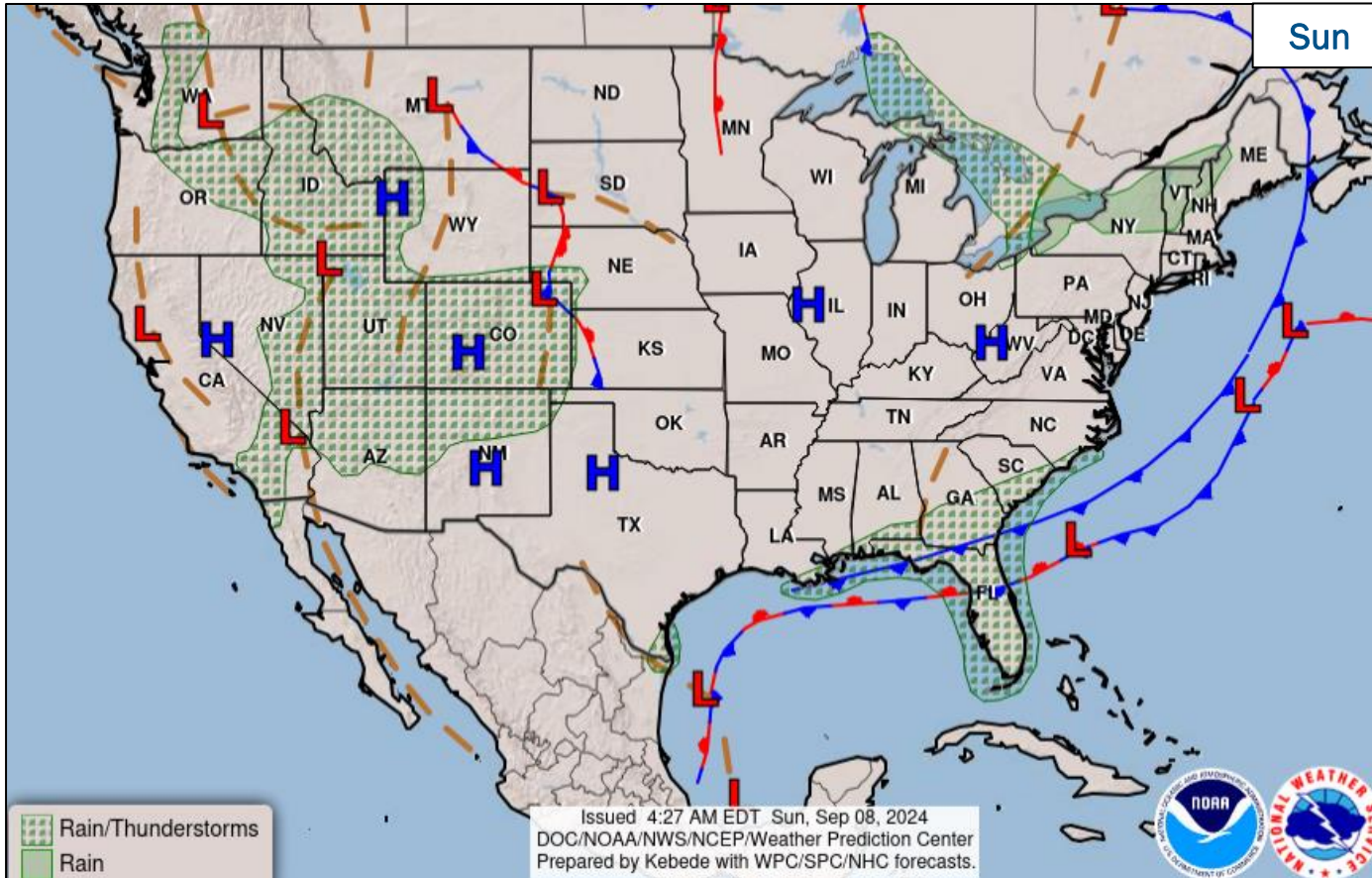
- Located several hundred miles SW of the Cabo Verde Islands
- Very little movement over the next couple of days
- Formation chance: 48-hour – Low (near 0%); 7-day – Medium (50%)

National Watch Center



FEMA

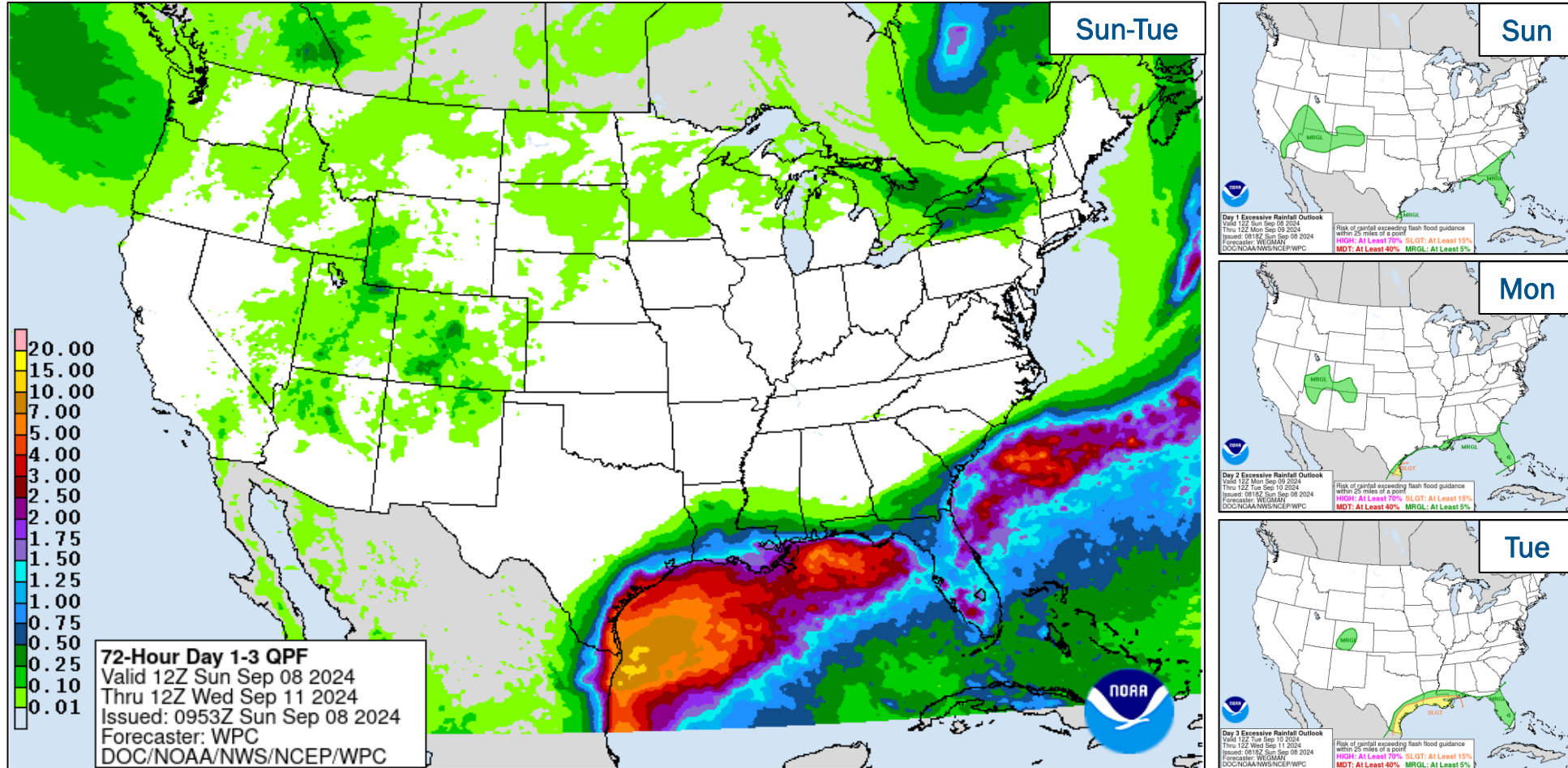
National Weather Forecast



FEMA

National Watch Center

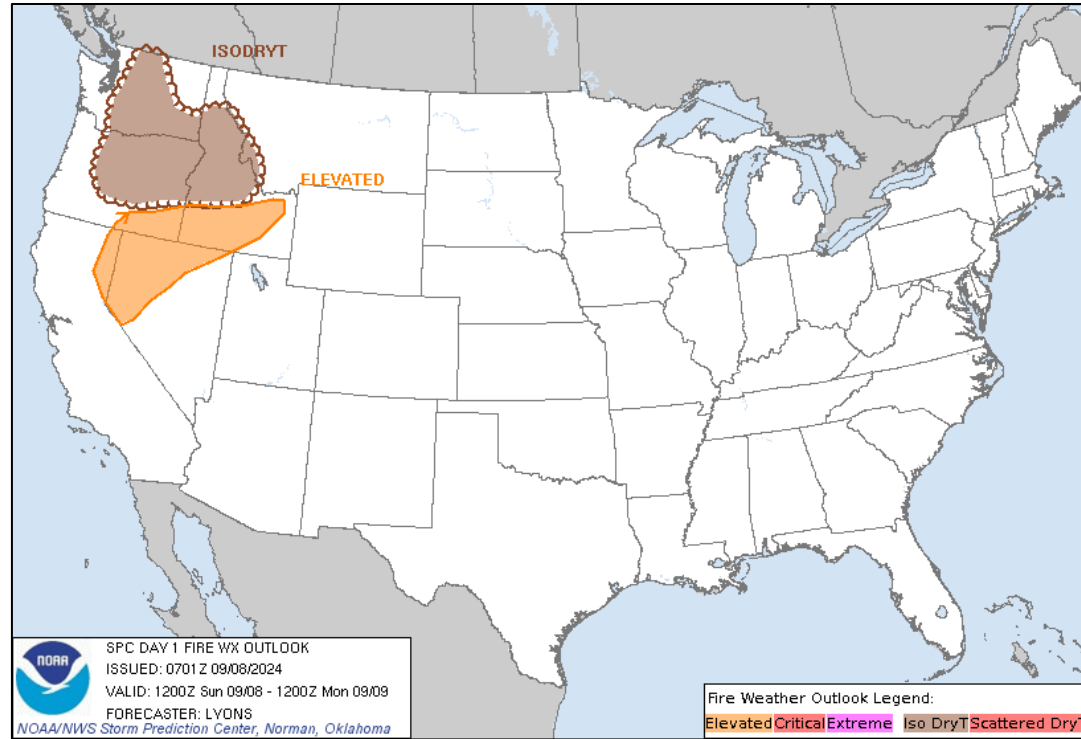
Precipitation & Excessive Rainfall



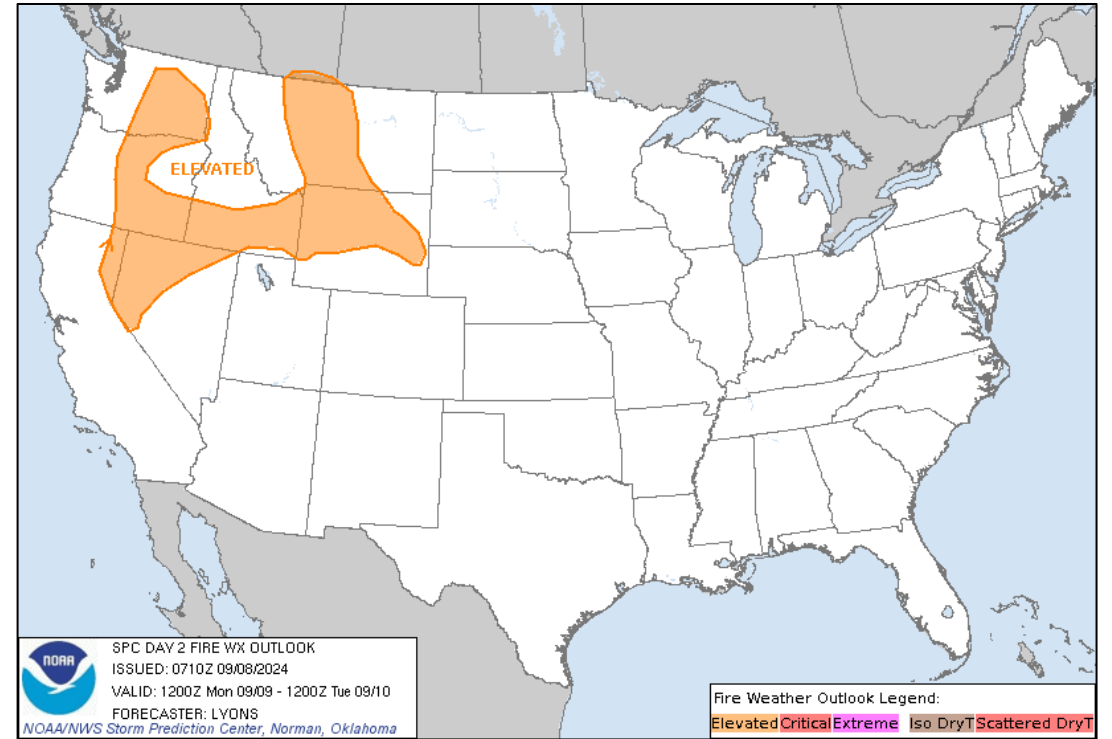
FEMA

National Watch Center

Fire Weather Outlook



Today



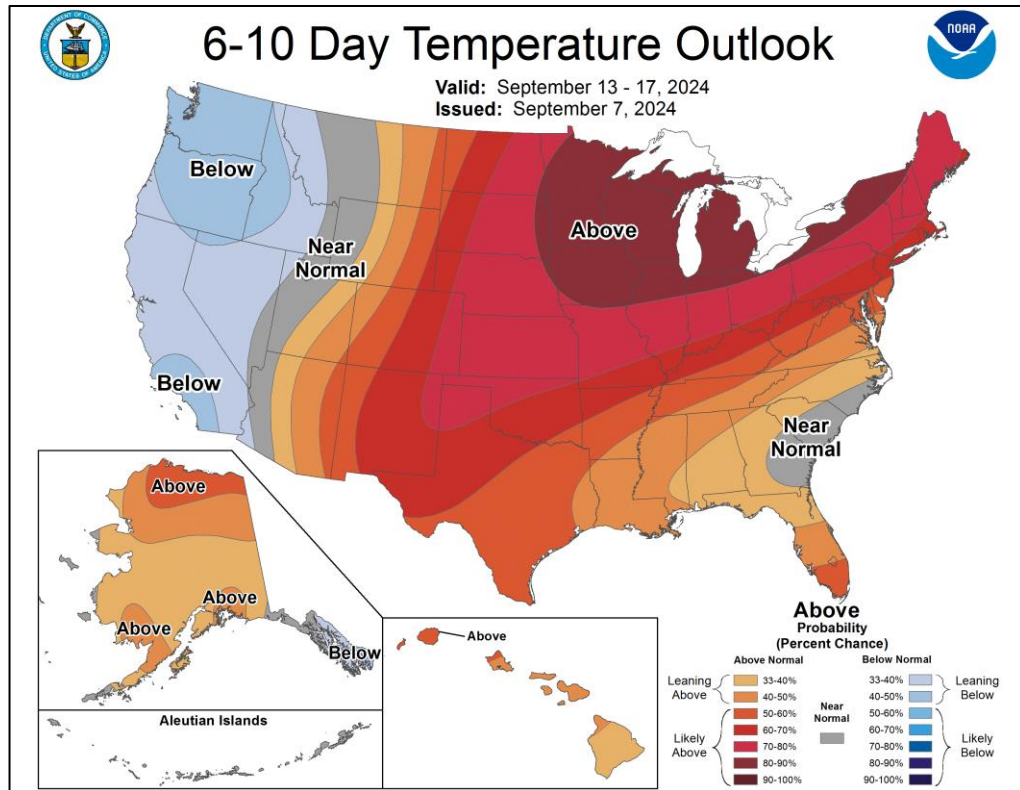
Tomorrow



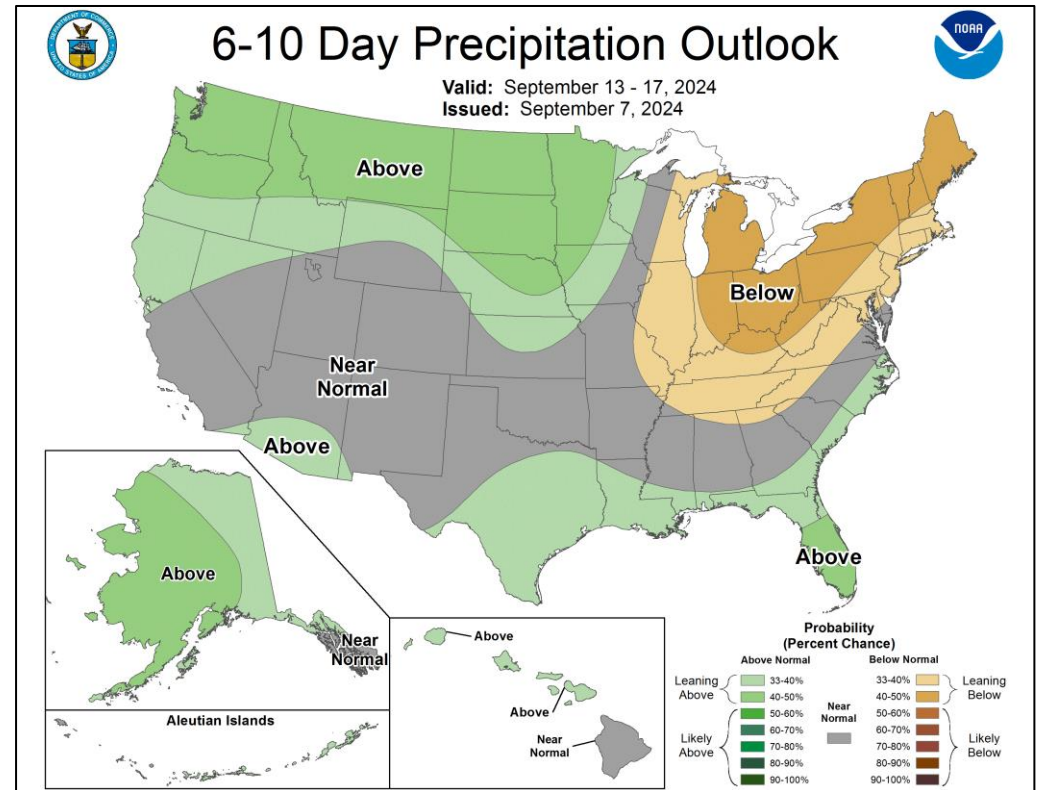
FEMA

National Watch Center

Long Range Outlooks – Sep 13-17



6-10 Day Temperature Probability



6-10 Day Precipitation Probability

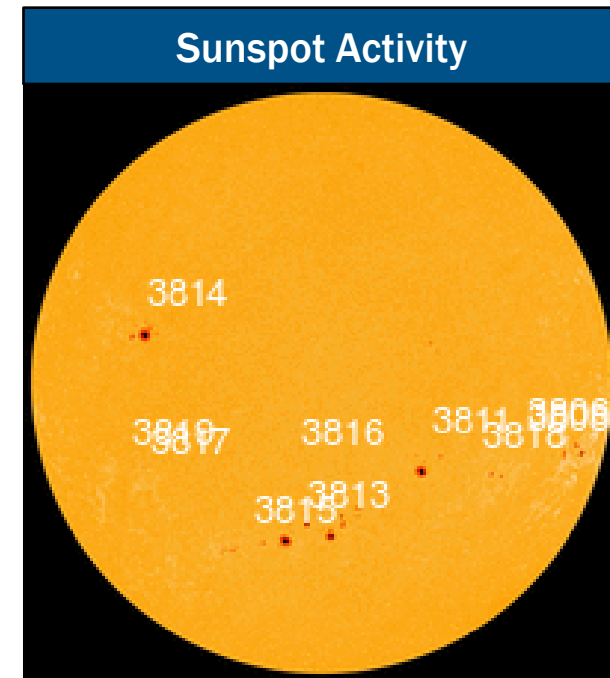
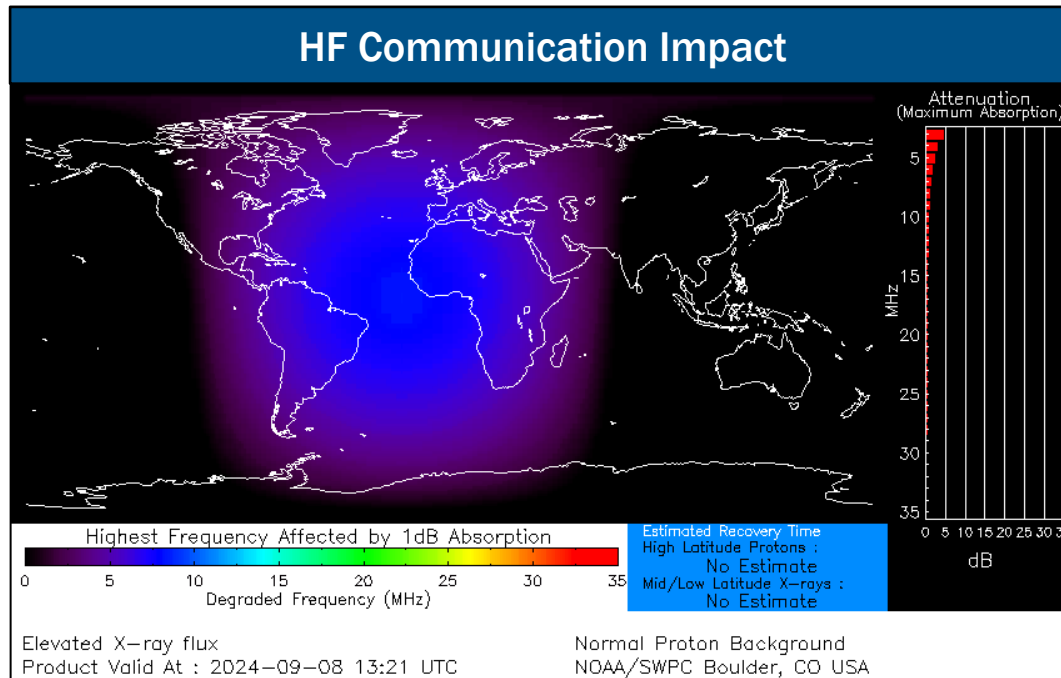


FEMA

Space Weather Outlook

Minor	Space Weather Activity	Geomagnetic Storms	Solar Radiation	Radio Blackouts
Past 24 Hours	None	None	None	None
Next 24 Hours	Minor	None	None	R1

For further information on NOAA Space Weather Scales refer to: <http://www.swpc.noaa.gov/noaa-scales-explanation>
 For further information on Sunspot Activity refer to: <https://www.swpc.noaa.gov/phenomena/sunspotssolar-cycle>



FEMA

Davis Fire – Nevada

Fire Name (County, ST)	FMAG #	Acres Burned	Percent Contained	Evacuations	Structures (Homes / Other)			Fatalities / Injuries
					Threatened	Damaged	Destroyed	
Davis (Washoe County, NV)	XXXX-FM-NV	1,500	0%	M: 800	H: 15,000	H: 0	H: 0	0 / 0
				V: 0	O: 0	O: 0	O: 0	

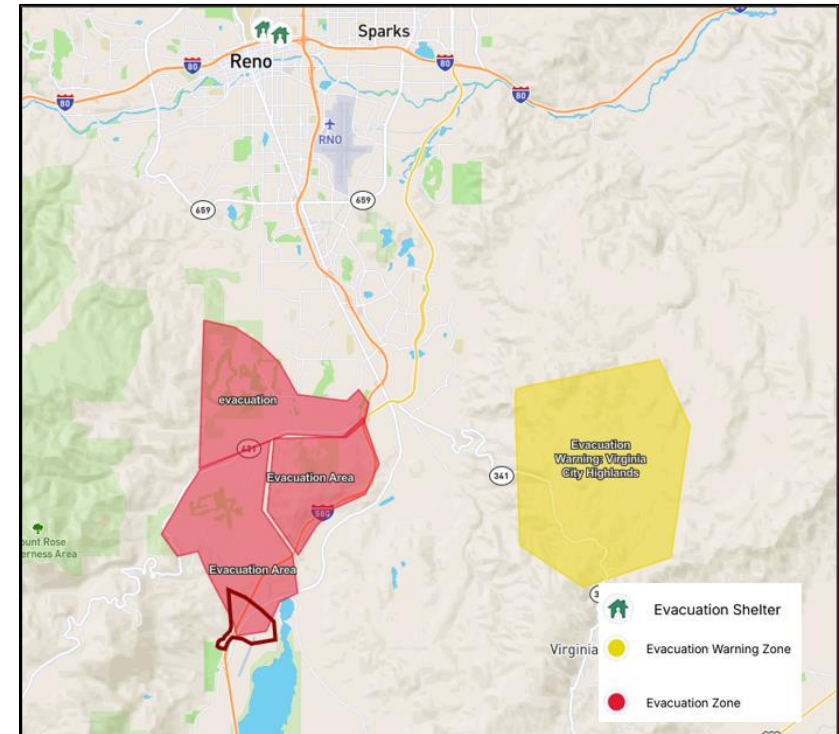
Situation: The Regional Administrator for FEMA Region IX approved a Fire Management Assistance Grant (FMAG) for the Davis Fire. The fire is burning in and around the communities of Frank Town, Galena Estates, and Old Washoe in Davis County (pop. 497k). The fire is also threatening electric power transmission lines.

State / Local Response:

- NV EOC is at Partial Operation (Davis Fire)

FEMA / Federal Response:

- FMAG approved Sep 7
- Region IX is Monitoring; RRCC is Rostered
- NWC is Monitoring; NRCC at Steady State



Rail Ridge Fire – Oregon

Fire Name (County, ST)	FMAG #	Acres Burned	Percent Contained	Evacuations	Structures (Homes / Other)			Fatalities / Injuries
					Threatened	Damaged	Destroyed	
Rail Ridge (Grant, Crook, and Wheeler, OR)	XXXX-FM-OR	107,000	4%	M: 331	H: 142	H: 0	H: 0	0 / 0
				V: 0	O: 0	O: 0	O: 0	

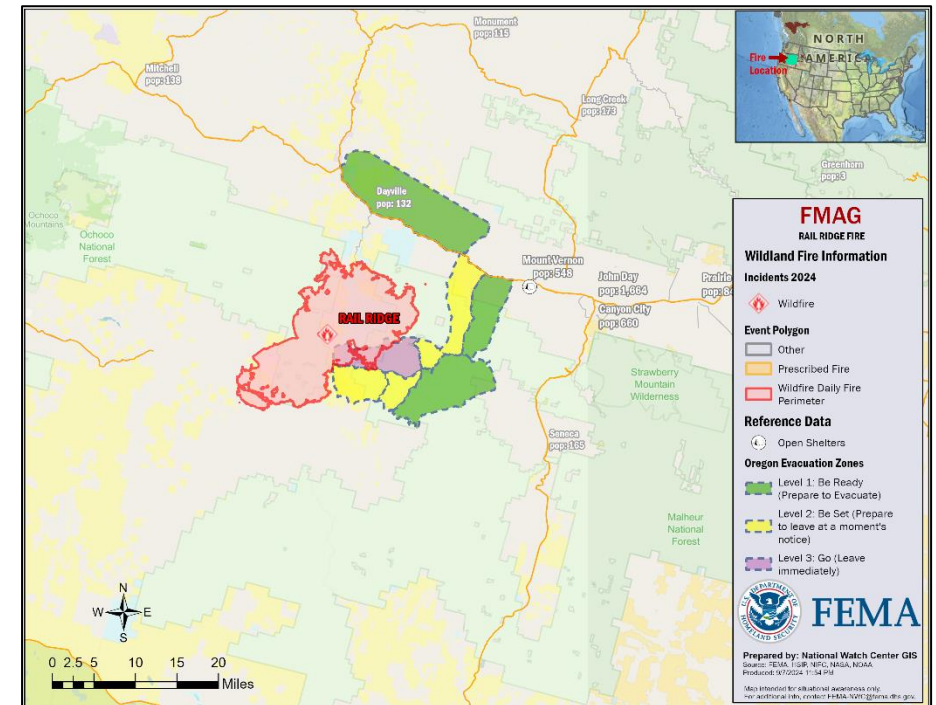
Situation: The Regional Administrator for FEMA Region X approved a Fire Management Assistance Grant (FMAG) for the Rail Ridge Fire. The fire is burning on private and federal lands in and around the community of Dayville (pop. 150). The fire is also threatening Highway 26, electric power transmission lines, recreational facilities, wildlife, and cultural resources.

State / Local Response:

- OR EOC is at Monitoring (Wildfires)

FEMA / Federal Response:

- FMAG approved Sep 7
- Bothell MOC is Monitoring; RRCC is Rostered
- NWC is Monitoring; NRCC at Steady State



Line Fire – California

Fire Name (County, ST)	FMAG #	Acres Burned	Percent Contained	Evacuations	Structures (Homes / Other)			Fatalities / Injuries
					Threatened	Damaged	Destroyed	
Line (San Bernardino, CA)	XXXX-FM-CA	10,000	0%	M: 25,000	H: 10,000	H: 0	H: 0	0 / 0
				V: 0	O: 0	O: 0	O: 0	

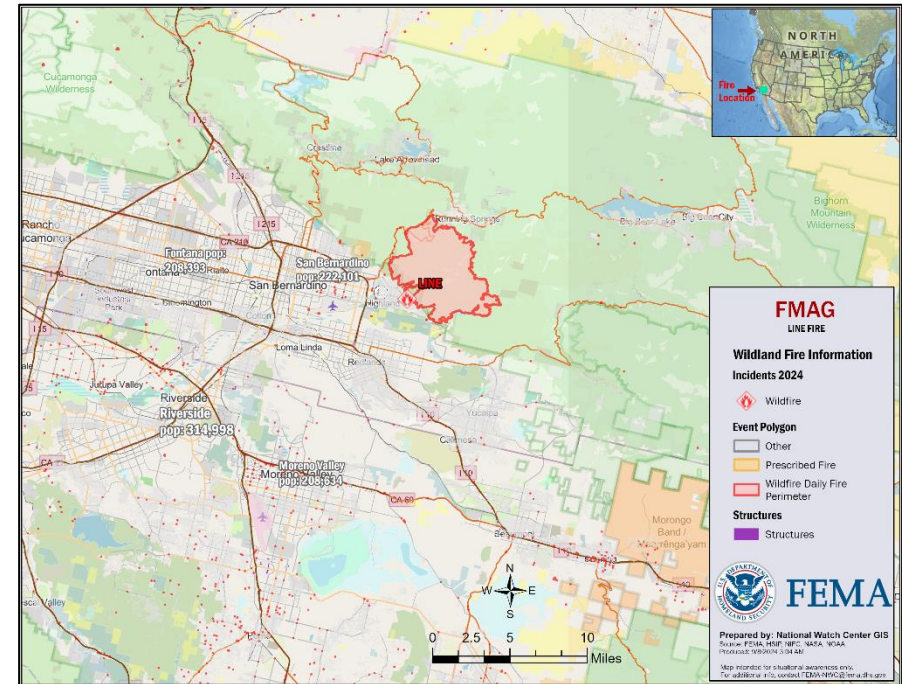
Situation: The Regional Administrator for FEMA Region IX approved a Fire Management Assistance Grant (FMAG) for the Line Fire. The fire is burning on state and federal lands, east of San Bernardino (pop. 222k) in San Bernardino County (pop. 2.2m). The fire is also threatening a local water system, 2 hydro electric powerplants, electric power transmission lines, 3 communication sites, and highway 330 is closed in both directions.

State / Local Response:

- CA EOC is at Normal Operation

FEMA / Federal Response:

- FMAG approved Sep 7
- Region IX is Monitoring; RRCC is Rostered
- NWC is Monitoring; NRCC at Steady State



Wildfire Summary

Fire Name (County, ST)	FMAG #	Acres Burned	Percent Contained	Evacuations	Structures (Homes / Other)			Fatalities / Injuries
					Threatened	Damaged	Destroyed	
Copperfield (Klamath, OR)	5532-FM-OR	3,822	68% (+11)	M: 462	H: 208	H: 0	H: 8	0 / 0
				V: 0	O: 200	O: 0	O: 22	

(Evacuations: M = Mandatory / V = Voluntary; Structures: H = Homes and Mixed Commercial/Residential / O = Non-residential Commercial/Other Minor Structures)



FEMA

FEMA Common Operating Picture

23 + 5 Joint Field Offices Virtual Joint Field Offices Supporting
99 + 8 Major Disasters Emergency Declarations
11 Direct Housing Missions **17** RSF-Supported Disasters **5** Joint Recovery Offices

Sunday
September 8, 2024
8:30 a.m. ET

FEMA HQ	
NWC	NRCC
Monitoring	Steady State
FEMA REGIONS	
Watch	RRCC
Monitoring	I Rostered
Monitoring	II Rostered
Monitoring	III Rostered
Monitoring	IV Rostered
Monitoring	V Rostered
Monitoring	VI Rostered
Monitoring	VII Rostered
Monitoring	VIII Rostered
Monitoring	IX Rostered
Monitoring	X Rostered

N-IMATs	
2-5 Teams Available	
Red	
White	
Blue	
Gold	
HS	

R-IMATs	
4-6 Teams Available	
I	VT (Aug 19)
II	VI (Aug 9)
III	
IV-1	3
IV-2	FL (Aug 2)
V	2
VI-1	1
VI-2	TX (May 17)
VII	IA (Jun 24)
VIII	SD (Aug 16)
IX-1	Personnel
IX-2	Personnel
X	Personnel

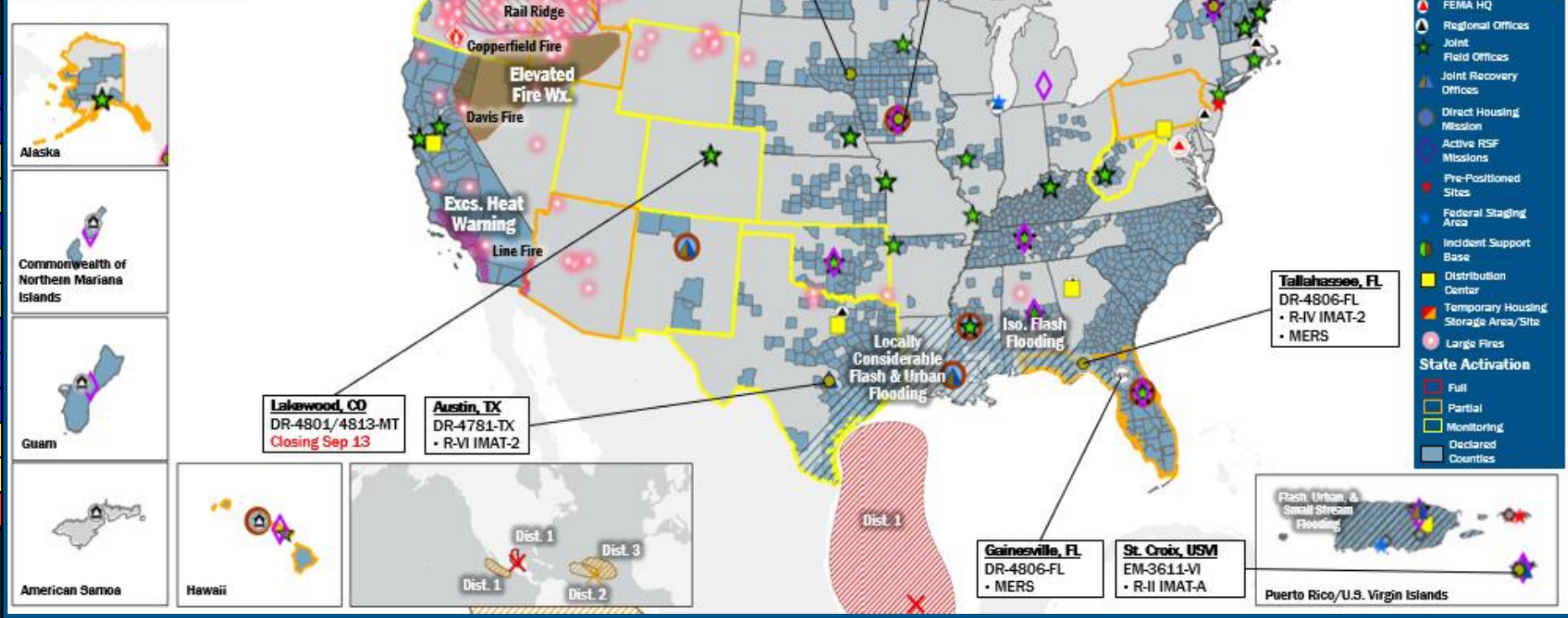
Notes:

NRCC/RWCs/RRCCs:	State EOCs:
• NSTR	• OK: Severe Weather
	• TX: TC Beryl
	• HI/OK/NM/OR/WA/ID/WY: Wildfires
	• AZ: SW Border
	• CO: Hwy. 50 closure/Avian Flu
	• AK/NM/AZ/UT: Flooding
	• FL/PA: TC Debby
	• WV: Drought

Volunteer Force	
Rostered 7,840	Deployed 11
Surge Capacity Force	
Rostered 7,786	Deployed 0

Fully Mission Capable (FMC)
Partially Mission Capable (PMC)
Not Mission Capable (NMC)
Deployed

REGIONAL BREAKDOWN				
	JFO/WFO	DR	EM	JRO
I	4/0	16	2	0
II	1/1	4	2	2
III	1/0	3	0	0
IV	5/0	25	4	0
V	2/0	3	0	0
VI	2/0	8	0	3
VII	3/1	10	0	0
VIII	0/1	4	0	0
IX	2/1	18	0	0
X	3/1	8	0	0



IM Workforce

13,667 Assigned
 4,841 (-58) Unavailable
 6,325 (-39) Deployed
 18% / 2,501 (+97) Available

IM Cadre Availability

16 Cadres ≤ 25% Availability

Alternative Dispute Resolution: 23% (8/35); Disability Integration: 12% (5/43); External Affairs: 24% (127/522); Environmental Planning and Historic Preservation: 13% (109/815); Field Leadership: 16% (24/148); Financial Management: 25% (59/232); Hazard Mitigation: 11% (137/1,243); Human Resources: 5% (8/167); Individual Assistance: 14% (348/2,531); Information Technology: 22% (142/637); Logistics: 13% (211/1,565); Operations: 14% (50/347); Public Assistance: 13% (292/2,216); Planning: 5% (21/459); Safety: 9% (8/94); Security: 6% (8/138)

MERS

≥ 66%

36 Assigned
 0 Unavailable
 1 Deployed
 35 Available

US&R

≥ 66%

28 Assigned
 1 Unavailable
 0 Deployed
 27 Available

FCO

2 Type I

52 Assigned
 6 Unavailable
 41 (31 FCOR) Deployed
 5 Available

Joint Preliminary Damage Assessments

Region	State / Location	Incident	IA	Number of Counties/Jurisdictions		Start – End
			PA	Requested	Complete	
I	CT	Severe Storms & Flooding Aug 18-19	IA	3	3 (+2)	8/29 – 9/5
			PA	3	0	9/13 – TBD
II	NY	Major Flooding (Severe Weather) Aug 19	IA	1	0	9/4 – TBD
			PA	2	0	9/3 – TBD
	PR	Tropical Cyclone Ernesto Aug 13-15	IA	0	0	N/A
			PA	61	4	8/30 – TBD
IV	SC	Tropical Cyclone Debby Aug 3-22	IA	3	3	8/29 – 9/5
			PA	13	3	8/27 – TBD
IX	CA	Park Fire and Borel Fire Jul 24 and continuing	IA	3	2	8/28 – TBD
			PA	0	0	N/A



FEMA

Declaration Requests in Process – 12

State / Tribe / Territory – Incident Description	Type	IA	PA	HM	Requested
OH – Train Derailment	DR	X	X	X	Jul 3, 2023
NY – Severe Storms, Tornadoes, Straight-line Winds, and Flooding	EM		X		Jul 20
SCA* – Watch Fire	DR	X	X	X	Aug 16
VT – Severe Storms and Flooding	DR		X	X	Aug 21
PA – Tropical Cyclone Debby	DR	X		X	Aug 23
CTBYN** – Wildfires	DR	X	X	X	Aug 23
SRMT*** – Severe Storm and Flooding	DR		X	X	Aug 26
IL – Severe Storms, Tornadoes, Straight-line Winds, and Flooding	DR	X		X	Aug 28
VT – Severe Storms, Flooding, Landslides, and Mudslides	DR	X	X	X	Aug 28
NE – Severe Storms, Straight-line Winds, Tornadoes, and Flooding	DR		X	X	Aug 29
KS – Severe Storms, Straight-line Winds, Tornadoes, and Flooding	DR		X	X	Sep 3
NE – Severe Storms, Straight-line Winds, Tornadoes, and Flooding	DR		X	X	Sep 6

* San Carlos Apache Tribe

** Confederated Tribes and Bands of the Yakama Nation

*** Saint Regis Mohawk Tribe



FEMA



FEMA

Helping people before, during, and after disasters.



Scan to subscribe to this briefing.