

FEMA National Watch Center

Daily Operations Briefing

Friday, August 25, 2023

8:30 a.m. ET



FEMA

National Current Ops / Monitoring

New Significant Incidents / Ongoing Ops

- Wildfires – HI
- Severe Weather – FEMA Region V
- Tropical Activity Preparations – FEMA Regions II, IV, VI

Hazard Monitoring

- Heavy Rain – Central Plains
- Tropical Activity:
 - Atlantic:
 - Tropical Storm Franklin
 - Disturbance 1: High (70%); Disturbance 2: Low (20%); Disturbance 3: Med (50%)
 - Eastern Pacific:
 - Disturbance 1: High (80%); Disturbance 2: Med (40%)

Disaster Declaration Activity

- No new declaration activity

Event Monitoring

- No significant events



FEMA

Severe Weather – FEMA Region V

Situation: Severe weather moved across portions of FEMA Region V Thursday evening, accompanied by thunderstorms and excessive rainfall. Eagle-I reported a combined 635k (8%) of customers without power, primarily in the state of Michigan and Ohio. Reports of downed trees, flooding, downed powerlines, damaged buildings and homes. Affected states have taken necessary preliminary actions. There are no requests for FEMA assistance. Power restoration efforts are expected to begin during daylight hours, as weather conditions allow. The following counties have the highest reported power outages:

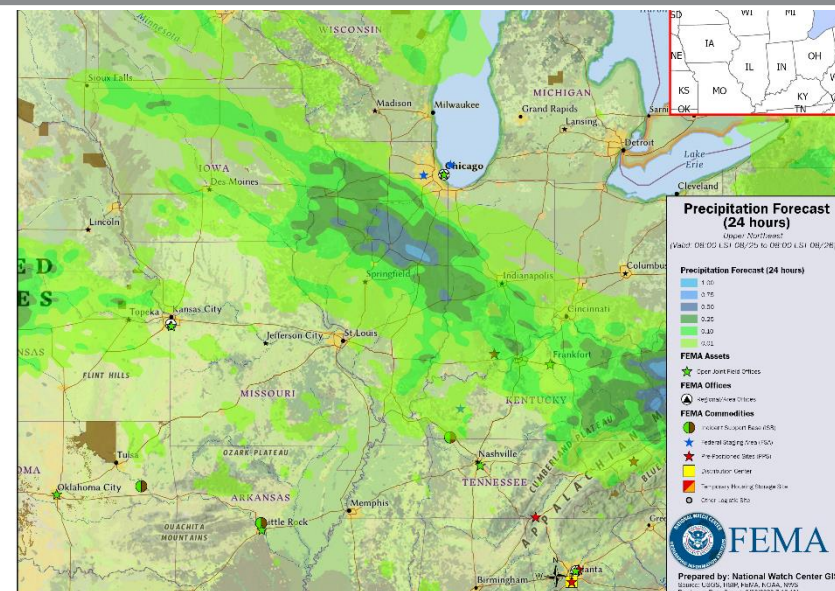
Impacts: (EAGLE-I as of 8:00 a.m. ET)

- Michigan – 420k customers without power statewide (9%)
 - Kent County: 56k without power (13%)
 - Ingham County: 52k without power (28%)
 - Wayne County: 88k without power (21%)
- Ohio – 215k customers without power statewide (4%)
 - Cuyahoga County: 54k without power (10%)
 - Lake County: 34k without power (55%)
 - Summit County: 15k without power (17%)

State / Local Preparations and Continuing Response:

Region V:

- MI EOC is at Partial Activation (Severe Weather)
 - Governor declared a State of Emergency
- OH EOC is at Normal Operations



FEMA Response:

Region V:

- FEMA Region V RRCC is at Normal Operations

FEMA HQ:

- NRCC supporting sustained operations
- The NWC will continue to monitor in coordination with FEMA Region V; however, barring significant new developments this is anticipated to be the final report



FEMA

Wildfires – Hawaii

Maui



Current Situation: FEMA and federal partners continue to support the state of Hawaii in response and recovery efforts from Hawaii Wildfires. Mission priorities remain focused on Search & Rescue, fire containment, and damage assessments in the impacted area (Maui County). The second Disaster Recovery Center (DRC #2) is scheduled to soft open today and fully open on Fri. (8/25). Cellular service continues to improve in West Maui.

Lifelines Impacts: (FEMA-DR-4724-HI-SLB #15, as of Aug 24)

Safety and Security:

- US&R reports 100% of single-story residential properties have been search. Maui County Police Department is reporting 92% of the burned area and 3,700 vehicles have been searched
- US Navy Mobile Diving and Salvage Unit conducting side scan sonar and recon dives inside harbor
- ESF-13: 158 (-1) FLEOs from various agencies supporting Maui PD

Food, Hydration, and Shelter:

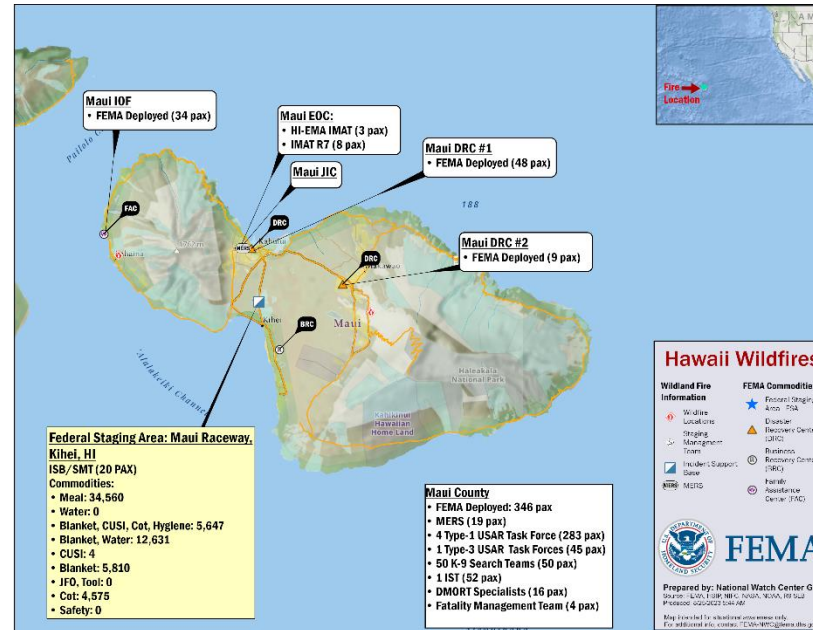
- Non-Congregate Shelters Open: 12 (+1); midnight count: 2,936 (+207) Hotel Survivor Population: 2,870 (American Red Cross, as of 10:00 p.m. Aug 24)
- TSA: 164 (+23) people housed in 8 hotels

Health and Medical:

- 115 confirmed fatalities; 67 fire-related injuries
- HHS BH personnel assisting mobile clinic providing behavioral health services with primary care providers at shelters

Energy:

- 1,845 (-24) customers remain without power in Maui
- Standby generator placement is being re-evaluated due to enhanced grid stability



Transportation:

- 3 Temporary Flight Restrictions (TFR) in effect for Maui County
- Access limited for Honoapiʻilani and Lahaina Bypass Roads: open to the public during the day and evening; limited to residents and first responders overnight
- FEMA contractors providing universal communication and prior permission required (PPR) services at Kapalua Airport until 8/30
- US Coast Guard Safety Zone remains in effect until 9/27

Hazardous Waste:

- EPA providing technical assistance to State DOH and Maui County regarding design of community air monitoring effort
- USACE: Temporary Power team and contractor installed 2 generators to power EPA staging area in Central Maui

State / Local Response:

- HI state EOC at Full Activation / Gov declared a SOE

FEMA / Federal Response:

- FEMA-4724-DR-HI approved Aug 10
- Region IX RWC continues to monitor
 - IMAT-2 with ESFs 1 through 15 and DCE deployed to HI
 - 1 LNO deployed to HI EOC (Oahu), 1 LNO in Maui
 - 1 FCO in Maui, 1 in Oahu
- HQ:
 - NRCC supporting sustained operations
 - Region VII IMAT deployed to HI
 - US&R: Blue IST, 3 (-1) NIMS Type 1 task forces, 0 (-1) NIMS Type 3 task force, 0 (-1) Mission Ready Packages - Canine Search, and 20 (-15) single resource Canine Search Teams
 - MERS personnel deployed to HI
 - Staging Management Team (SMT) and Incident Support Base (ISB) team deployed to Maui
 - Disaster Recovery Center (DRC) open
 - NWC continues to monitor in coordination with Region IX; the next update will be in the 5:00 p.m. ET FEMA National Situation Report

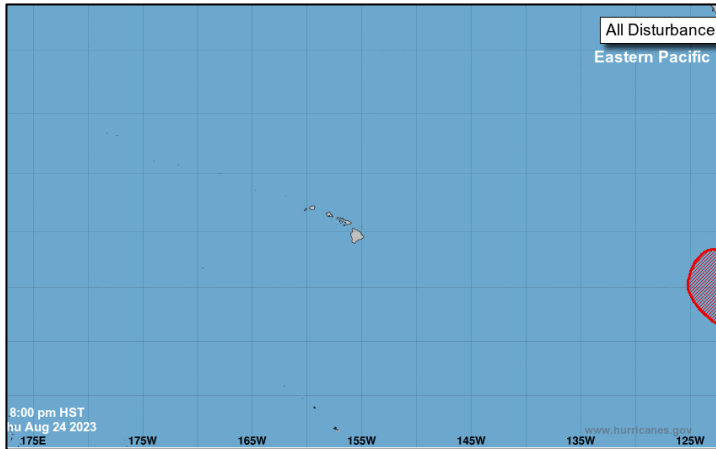
National Watch Center



FEMA

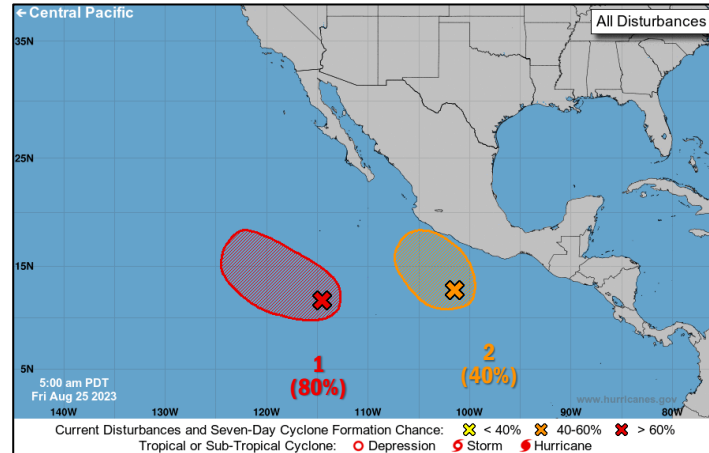
Tropical Outlook – Seven Day

Central Pacific



- No new tropical cyclones are expected during the next 7 days
- Storm system shown is Disturbance 2 located in the Eastern Pacific

Eastern Pacific



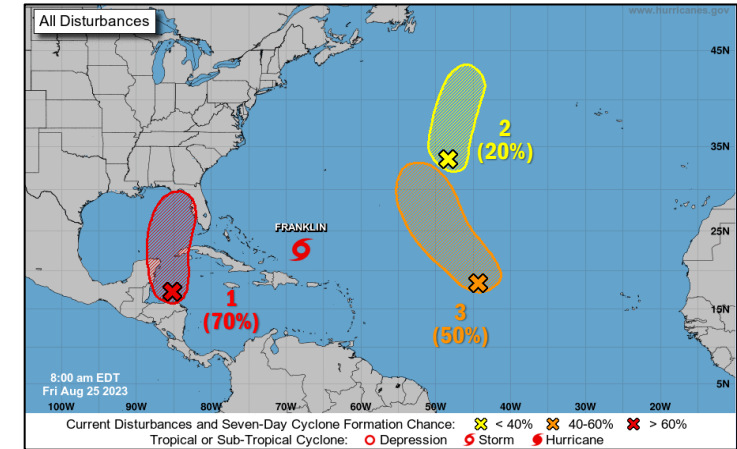
Disturbance 1 (EP92) (as of 8:00 a.m. ET)

- Located off the southern top of Baja California
- Moving WNW at 10-15 mph
- Tropical development is likely to form during the next couple of days
- Formation chance – 48-hour: High (70%); 7-day: High (80%)

Disturbance 2 (EP91) (as of 8:00 a.m. ET)

- Located several hundred miles south of the southern coast of Mexico
- Moving NW
- Conditions appear favorable for gradual development, a tropical depression could form in the next few days
- Formation chance – 48-hour: Low (20%); 7-day: Medium (40%)

Atlantic



Tropical Storm Franklin (Advisory #19, as of 5:00 a.m. ET)

- See below

Disturbance 1 (as of 8:00 a.m. ET)

- Currently in the Caribbean Sea
- Tropical depression likely to form late this weekend or early next week
- Formation chance – 48-hour: Low (30%); 7-day: High (70%)

Disturbance 2 (Remnants of Emily) (as of 8:00 a.m. ET)

- Located about 1000 miles ENE of Bermuda
- Environmental conditions are less favorable cyclone formation
- Formation chance – 48-hour: Low (20%); 7-day: Low (20%)

Disturbance 3 (AL92) (as of 8:00 a.m. ET)

- Located between Cabo Verde and the Northern Leeward Islands
- A tropical depression could form early next week
- Formation chance – 48-hour: Low (20%); 7-day: Medium (50%)

National Watch Center

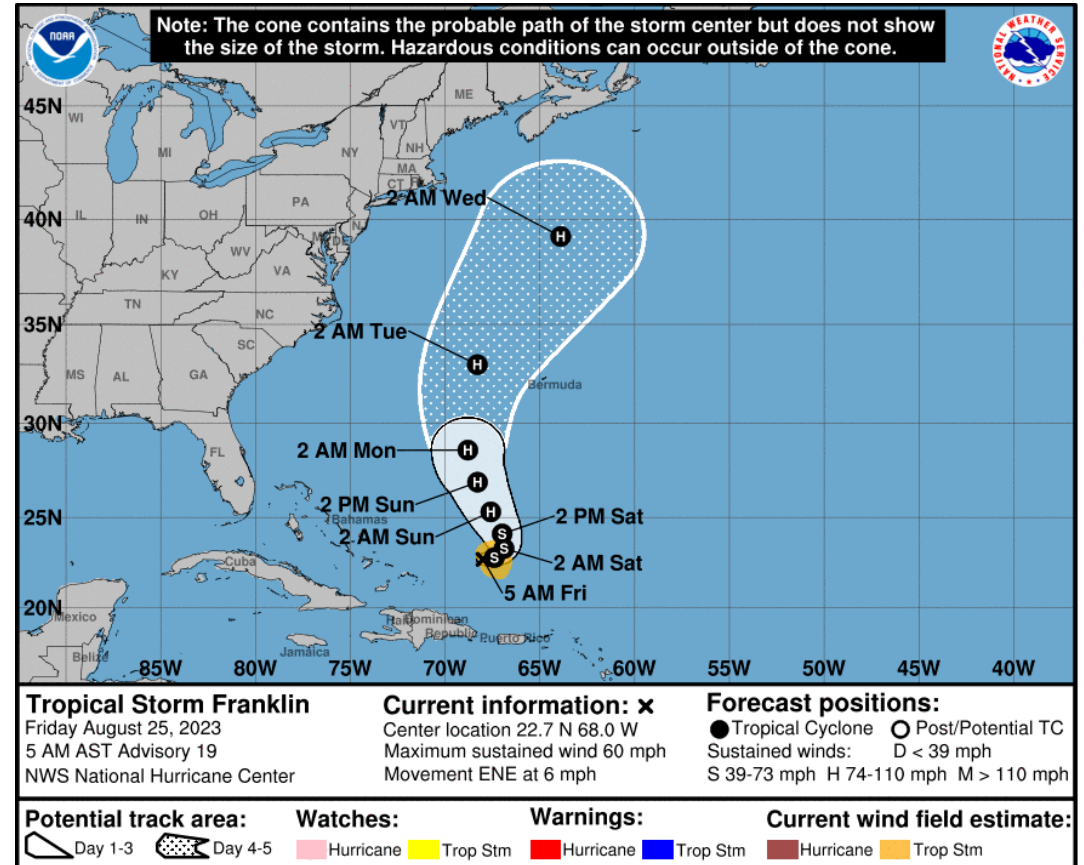


FEMA

Tropical Storm Franklin – Atlantic

Situation (Advisory #19 as of 5:00 a.m. ET)

- Located **215** miles ENE of Grand Turk Island
- Maximum sustained winds 60 mph
- Moving ENE at **6** mph
- Tropical-storm-force winds extend outward at **105** miles
- **Franklin will likely become a hurricane over the weekend**



FEMA

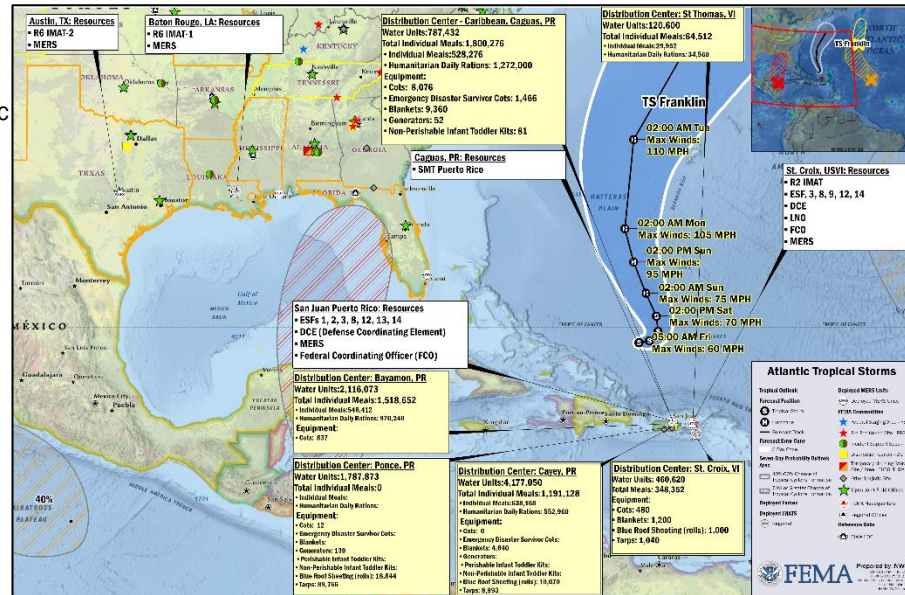
Tropical Activity Preparations – Atlantic

Current Situation:

FEMA continues to prepare for response and recovery efforts focusing on FEMA Regions II, IV, and VI. The National Hurricane Center is monitoring several tropical disturbances in the Atlantic that may pose a threat to US interests over the next several days

State / Local Response: (RVI Daily Ops Brief as of 8:30 a.m. ET, Aug 22)

- TX EOC: Partial Activation (TC Harold); Activated ESFs 1-20
- TX activated 7 Boat Teams; pre-positioned for SAR ops
- TX Military Department (TMD) activated 2 Ground Support Platoons pre-positioned in Live Oak County
- FL EOC: Partial Activation (TC Ian)
- MS EOC: Partial Activation (Severe Weather)
- AL & TN Monitoring (Severe Weather)
- LA, PR and USVI EOCs at Normal Operations; VITEMA and PREMB are monitoring for potential activation



FEMA / Federal Response:

- Region II
 - RWC is Monitoring
 - RRCC at Level III w/ ESFs 1, 2, 3, 8, 12, 13, 14 and DCE
 - Response and Recovery Augments deployed to PR and USVI
 - IMAT deployed to St. Croix w/ ESFs 1, 3, 8, 9, 12, 13, 14 and DCE
 - Collateral IMAT deployed to St. Thomas w/ ESFs 1, 2, 3, 8, 12, 13, 14 and DCE
 - Ad-Hoc IMAT deployed to PR
 - LNOs deploying upon activation of EOCs
 - FCOs deployed to PR and USVI
 - LNO and DIVS rostered and prepared to deploy upon activation of EOCs
 - All resources deployed for RII
- FEMA HQ
 - NRCC supporting sustained operations
 - Staging Management Team (SMT) demobilizing from PR
 - Disaster Survivor Assistance (DSA) placed on Alert
 - MERS support deployed to USVI and PR

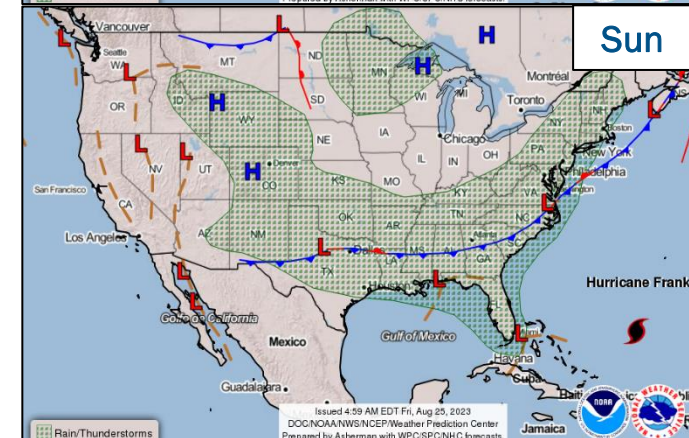
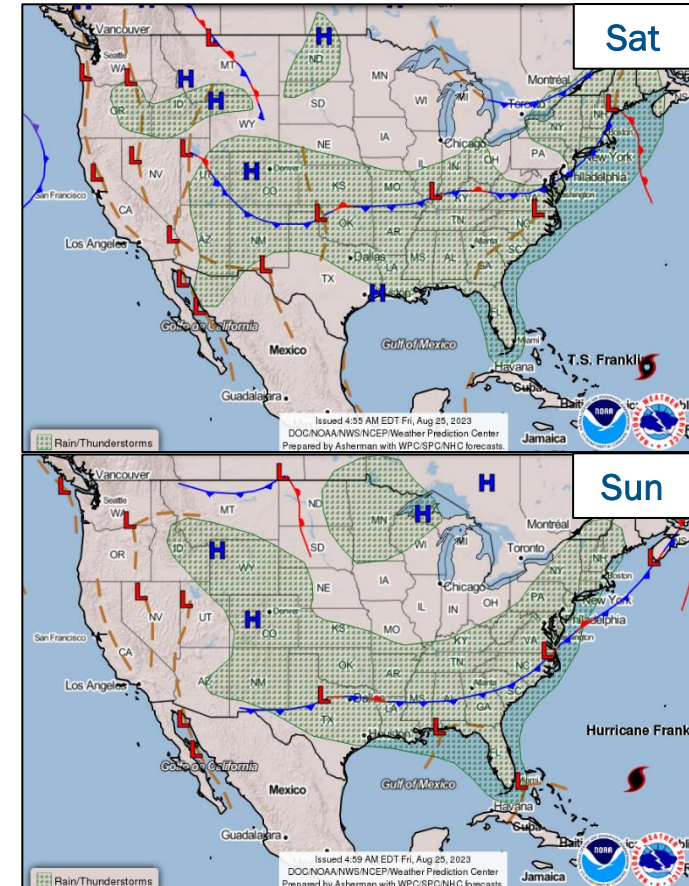
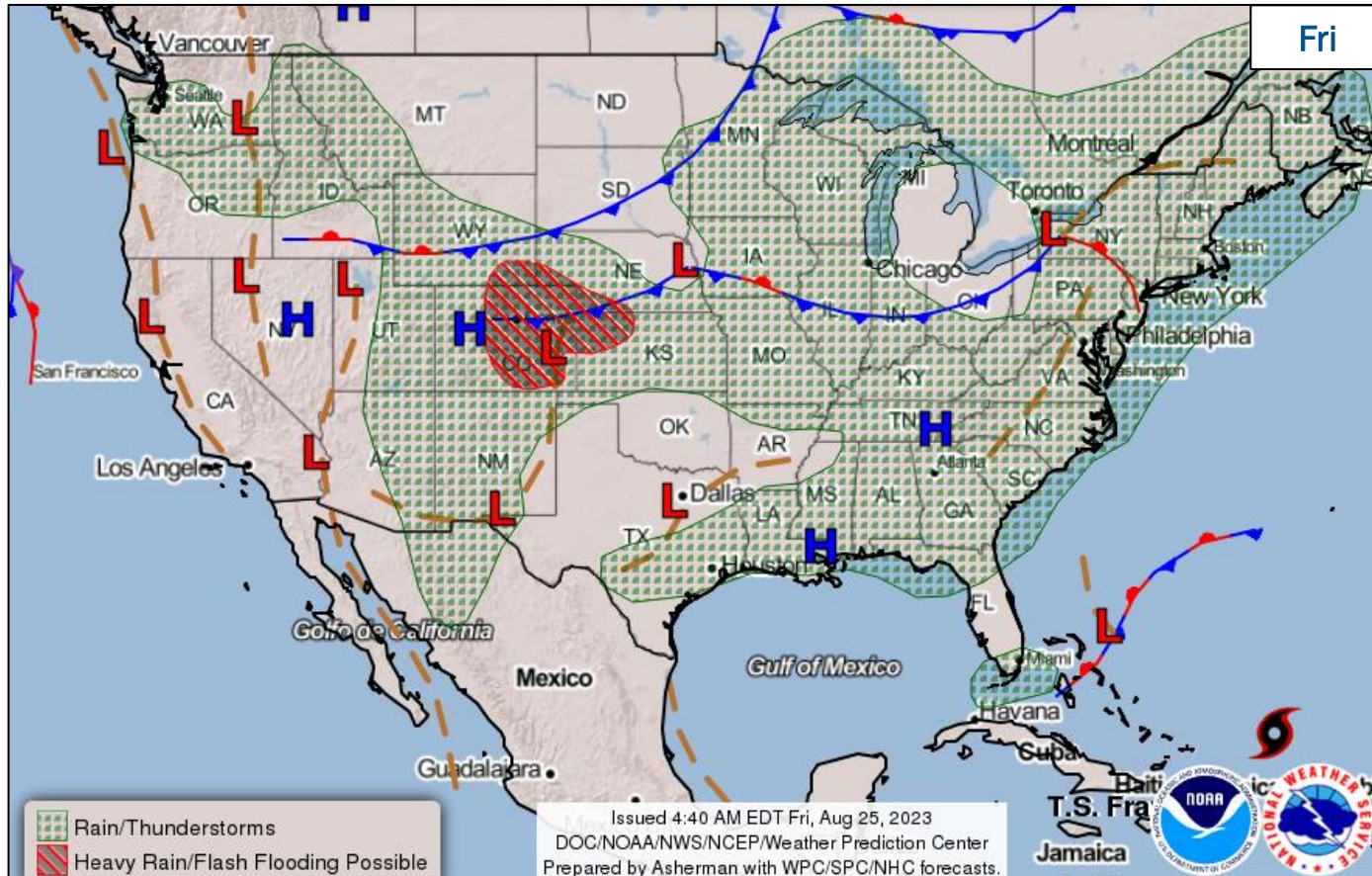
FEMA / Federal Response:

- Region IV: [Enhanced](#); RRCC, DIVS, and IGA rostered
- Region VI:
 - RRCC activated to Level III w/ ESF 1 and DCE
 - IMAT-1: deployed to Baton Rouge, LA
 - IMAT-2: deployed to Austin, TX
 - Pre-identified Staging Bases including (NAS Kingsville or Moore AB in Edinburg) and is developing potential commodities support package to utilize if the situation warrants



FEMA

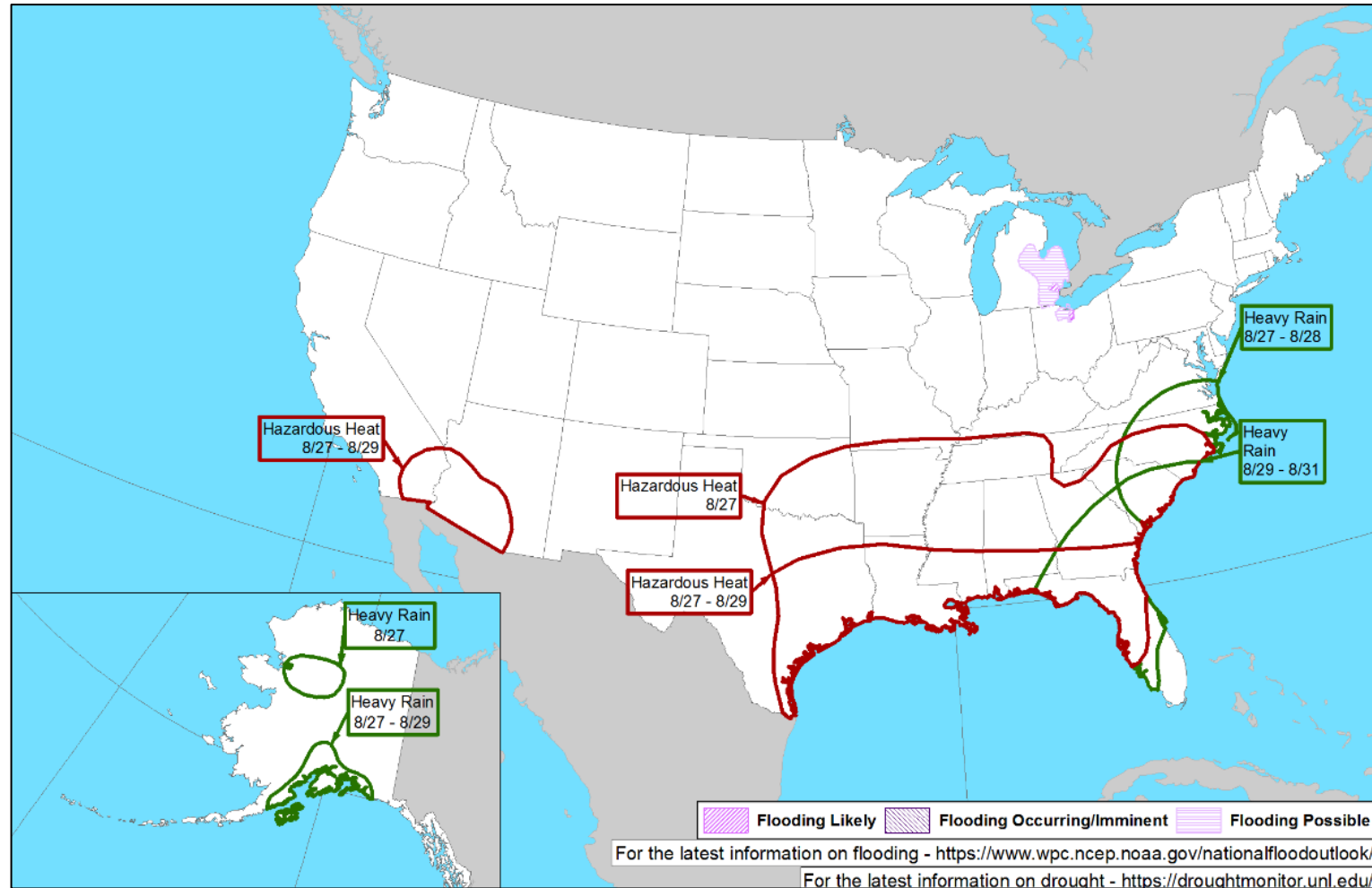
National Weather Forecast



FEMA

National Watch Center

Hazards Outlook – Aug 27-31



FEMA



Spokane Co. Wildfires – Washington - Final

Situation: Both FEMA RX and Washington State are in alignment on the current lifeline status as indicated on the slide. Lifelines continue to trend upward (turning green) indicating improving conditions. Northwest Interagency Coordination Center (NWCC) reports Gray fire as 48% contained and Oregon Rd. fire as 0% contained.

Lifelines Impacts: (Region X Report, as of 11:30 p.m. ET, Aug 23)

Safety and Security:

- Approximately 21,178 total acres burned
- Residences threatened: 1,850 total, (850 Gray, 1,000 Oregon Road)
- Destroyed: 332 homes (240 Gray, 92 Oregon Road); 166 structures destroyed

Food, Hydration, and Shelter:

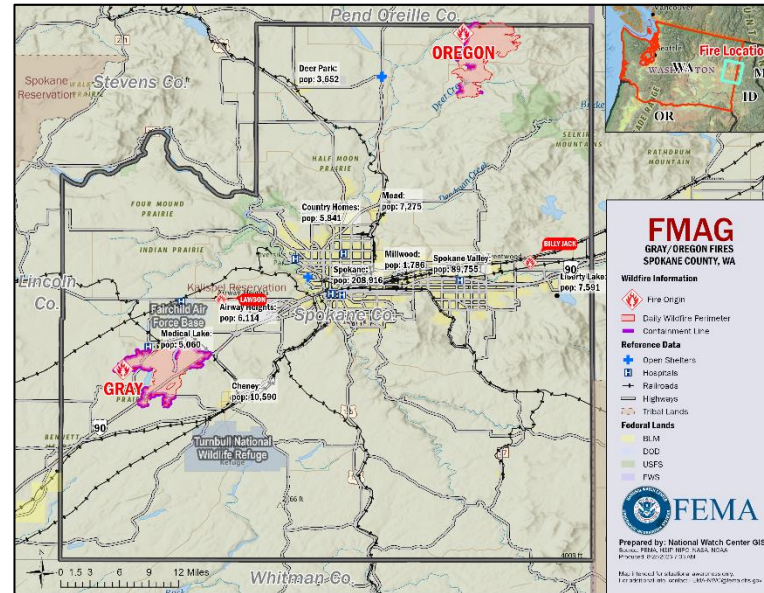
- Gray Fire all Level 3 "Go Now" orders have been lifted allowing the 4,000 displaced residents to return home. Level 2 – Be Ready remains in effect for a couple of areas
- Shelter pop (WA): 62; 3 shelters open (American Red Cross, as of 6:51 a.m. ET, Aug 25)
- Clear Lake remains under boil water advisory

Health and Medical:

- Air Quality Index is Good
- 2 confirmed fatalities

Energy:

- Seattle City Light (SCL) crews continue inspections; in progress getting last line re-energized. SCL is meeting their energy production quota.



Communications:

- Limited telecommunications due to impacted cell towers in the area surrounding the Gray Fire. T-Mobile on site providing support. WA Tech replacing primary fiber for the Eastern State Hospital

Transportation:

- SR 902, 904, 20, and I-90 are Open
- 1 rail bridge damaged, workaround in place

Hazardous Material:

- Increased risk of HAZMAT within affected areas due to the fuels being burned across the country

State / Local Response:

- WA at Full Activation (Fire Season) w/ ESFs 2, 4, 5, 6, 7, 8, 11, 13, 14, 15, and 20 (ESF 1 and 12 will deactivate 5/25)
- Governor declared a SOE

FEMA / Federal Response:

- FMAGs approved Aug 19
- NRCC supporting sustained operations
- Region X RRCC at Level III/ Bothell MOC at Enhanced Watch
- FEMA LNO is deployed to State EOC
- Region X IMAT deployed
- HQ & R10 providing GIS/remote sensing support



FEMA

Wildfire Summary

Fire Name (Co., ST)	FMAG #	Acres Burned	Percent Contained	Evacuations	Structures (Homes / Other)			Fatalities / Injuries
					Threatened	Damaged	Destroyed	
River Road East (Sanders, MT)	5480-FM-MT	17,083 (+311)	7% (+2)	M: 0	H: 215	H: 0	H: 13	0 / 0
				V: 0	O: 50	O: 0	O: 37	
Oregon (Spokane, WA)	5481-FM-WA	11,036	16% (+12)	M: 4,000	H: 1,000	H: 12	H: 80 (-12)	0 (-1) / 2
				V: 0	O: 1,000	O: 15	O: 80	
Tiger Island (Beauregard Parish, LA)	5482-FM-LA	15,000 (+5,000)	65% (+5)	M: 25 (-25)	H: 50 (+50)	H: 0	H: 0	0 / 1 (+1)
				V: 0 (-492)	O: 30 (+30)	O: 0	O: 0	
Liberty Fire (Marion County, OR)	5483-FM-OR	40	0%	M: 200	H: 1,200	H: 0	H: 0	0 / 0
				V: 0	O: 0	O: 0	O: 0	

(Evacuations: M = Mandatory / V = Voluntary; Structures: H = Homes and Mixed Commercial/Residential / O = Non-residential Commercial/Other Minor Structures)



FEMA

FEMA Common Operating Picture

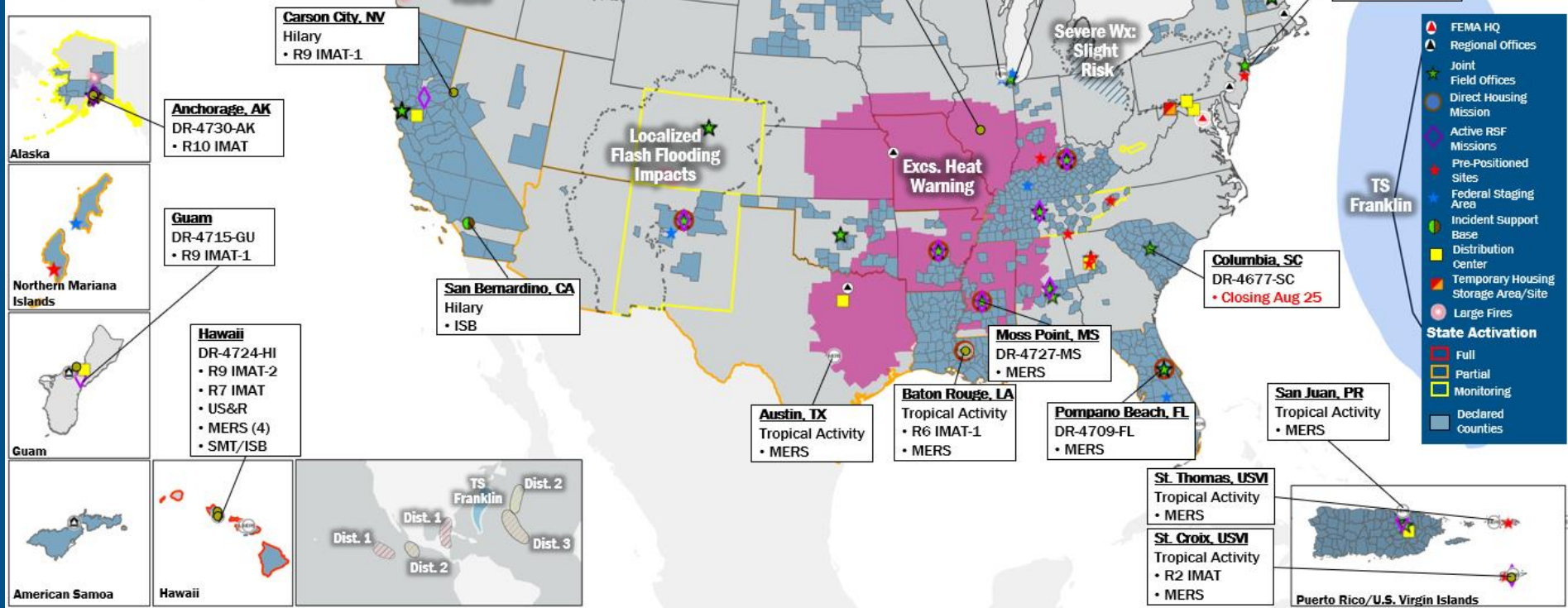
16 + 8 Joint Field Offices Virtual Joint Field Offices Supporting
72 + 0 Major Disasters Emergency Declarations
8 Direct Housing Missions **18** RSF-Supported Disasters

Friday
 August 25, 2023
 8:30 a.m. ET

FEMA HQ	
NWC	NRCC
Monitoring	Activated
FEMA REGIONS	
Watch	RRCC
Monitoring	I Rostered
Monitoring	II Level III
Monitoring	III Rostered
Enhanced	IV Rostered
Monitoring	V Rostered
Monitoring	VI Rostered
Monitoring	VII Rostered
Monitoring	VIII Rostered
Monitoring	IX Rostered
Monitoring	X Rostered
Notes:	
RWC/RRCC: • NRCC: (day shift) Tropical Activity • RII RRCC: Level III (Tropical Activity) • RV RWC: Enhanced (Tropical Activity)	State EOCs: • MO/MS/TN/TX: Severe Weather • FL: TC Ian • AK/NV/VT/CA: Flooding • CO: Avian Influenza, Public Health Support, and Suncor Refinery • AZ/CO: SW Border Coordination • AK/HI/NM/WA/LA: Wildfires • CNMI: Typhoon Mawar • CA/LA: Heat
Surge Capacity Force	
Rostered 8,171	Deployed 0

N-IMATs	
2-5 Teams Available	
Red	
White	
Blue	
Gold	
HS	Training
R-IMATs	
4-6 Teams Available	
I	VT
II	USVI
III	
IV-1	Personnel
IV-2	Personnel
V	IL
VI-1	LA
VI-2	2
VII	HI
VIII	1
IX-1	GU/NV
IX-2	HI
X	AK
<ul style="list-style-type: none"> Fully Mission Capable (FMC) Partially Mission Capable (PMC) Not Mission Capable (NMC) Deployed 	

REGIONAL BREAKDOWN			
	JFO/VJFO	DR	EM
I	3/0	8	0
II	1/2	5	0
III	0/0	0	0
IV	7/1	18	0
V	1/1	3	0
VI	3/1	6	0
VII	0/0	0	0
VIII	0/1	6	0
IX	0/1	16	0
X	1/1	10	0



IM Workforce

13,601 (+1) Assigned
 4,352 (+33) Unavailable
 6,313 (-63) Deployed

22% (+1) / 2,936 (+31) Available

IM Cadre Availability

15 Cadres ≤ 25% Availability

Civil Rights: 11% (16/140); Disability Integration: 4% (2/55); External Affairs: 21% (107/501); Environmental Planning and Historic Preservation: 17% (135/810); Field Leadership: 12% (16/136); Hazard Mitigation: 14% (170/1,243); Human Resources: 8% (14/169); Interagency Recovery Coordination: 21% (61/294); Information Technology: 21% (136/644); Logistics: 16% (246/1,516); Operations: 13% (45/347); Public Assistance: 5% (118/2,176); Planning: 6% (26/465); Safety: 3% (2/80); Security: 9% (12/139)

MERS

≥ 66%

36 Assigned
 0 Unavailable
 6 (-2) Deployed

30 (+2) Available

US&R

≥ 66%

28 Assigned
 1 Unavailable
 5 Deployed

22 Available

FCO

≤ 1 Type I

48 Assigned
 7 Unavailable
 35 (23 (FCOR) Deployed)

6 Available

Joint Preliminary Damage Assessments

Region	State / Location	Incident	IA	Number of Counties		Start - End
			PA	Requested	Complete	
I	CT	Flooding Jul 9-10	IA	0	0	N/A
			PA	1	0	8/9 - TBD
	NH	Flooding Jun 17 and continuing	IA	0	0	N/A
			PA	10	0	7/24 - TBD
	VT	Flooding Aug 3-8	IA	0	0	N/A
			PA	2	0	8/21 - TBD
III	PA	Flooding Jul 15-16	IA	2	2	8/2 - 8/10
			PA	2	0	8/2 - TBD
IV	TN	Severe Storms and Tornado Aug 7	IA	1	1	8/22 - 8/23
			PA	11	9 (+4)	8/22 - TBD
VII	MO	Severe Storms and Flooding Jul 29 and continuing	IA	0	0	N/A
			PA	34	0	8/15 - TBD
	KS	Severe Storms and Flooding Jun 27 and continuing	IA	0	0	N/A
			PA	43	0	TBD
X	AK	Glacier Outburst Flooding Juneau Aug 4-6	IA	1	0	8/23 - TBD
			PA	1	0	8/23 - TBD



FEMA

Declaration Requests in Process – 14

State / Tribe / Territory – Incident Description	Type	IA	PA	HM	Requested
MI – Flooding	DR		X	X	Jun 15
OH – Train Derailment	DR	X	X	X	Jul 3
CO – Severe Storms, Tornadoes, and Flooding	DR		X	X	Jul 27
NH – Severe Storms, and Flooding	DR		X	X	Jul 28
PA – Severe Storms, Straight-line Winds, and Flooding	DR	X	X	X	Jul 31
WY – Flooding	DR	X	X	X	Aug 1
IA – Flooding	DR		X	X	Aug 3
Burns Paiute Tribe – Severe Storms, Flooding, Landslides, and Mudslides	DR		X	X	Aug 10
UT – Flooding	DR		X	X	Aug 11
ME – Severe Storms and Flooding (Jun 26)	DR		X	X	Aug 16
ME – Severe Storms and Flooding (Jun 29)	DR		X	X	Aug 16
KY – Severe Storms, Flooding, Straight-line Winds, and tornadoes	DR	X			Aug 18
TN – Severe Storms and Straight-Line Winds	DR		X	X	Aug 18
AR - Severe storms, straight-line winds, and tornadoes	DR	X	X	X	Aug 23



FEMA



FEMA

Helping people before, during, and after disasters.



Scan to subscribe to this briefing.