

FEMA National Watch Center

Daily Operations Briefing

Wednesday, August 20, 2025

8:30 a.m. ET



FEMA

National Current Ops / Monitoring

New Significant Incidents / Ongoing Ops

- No new significant incidents / operations

Hazard Monitoring

- Excessive Heat – Southwest, Lower Mississippi Valley
- Tropical Activity:
 - Atlantic:
 - Hurricane Erin (CAT-2)
 - Disturbance 1: Med (60%)
 - Disturbance 2 (AL99): Med (40%)

Disaster Declaration Activity

- FMAG Approval: Kunia Road Fire – HI
- Amendment No. 7 to FEMA-4879-DR-TX

Event Monitoring

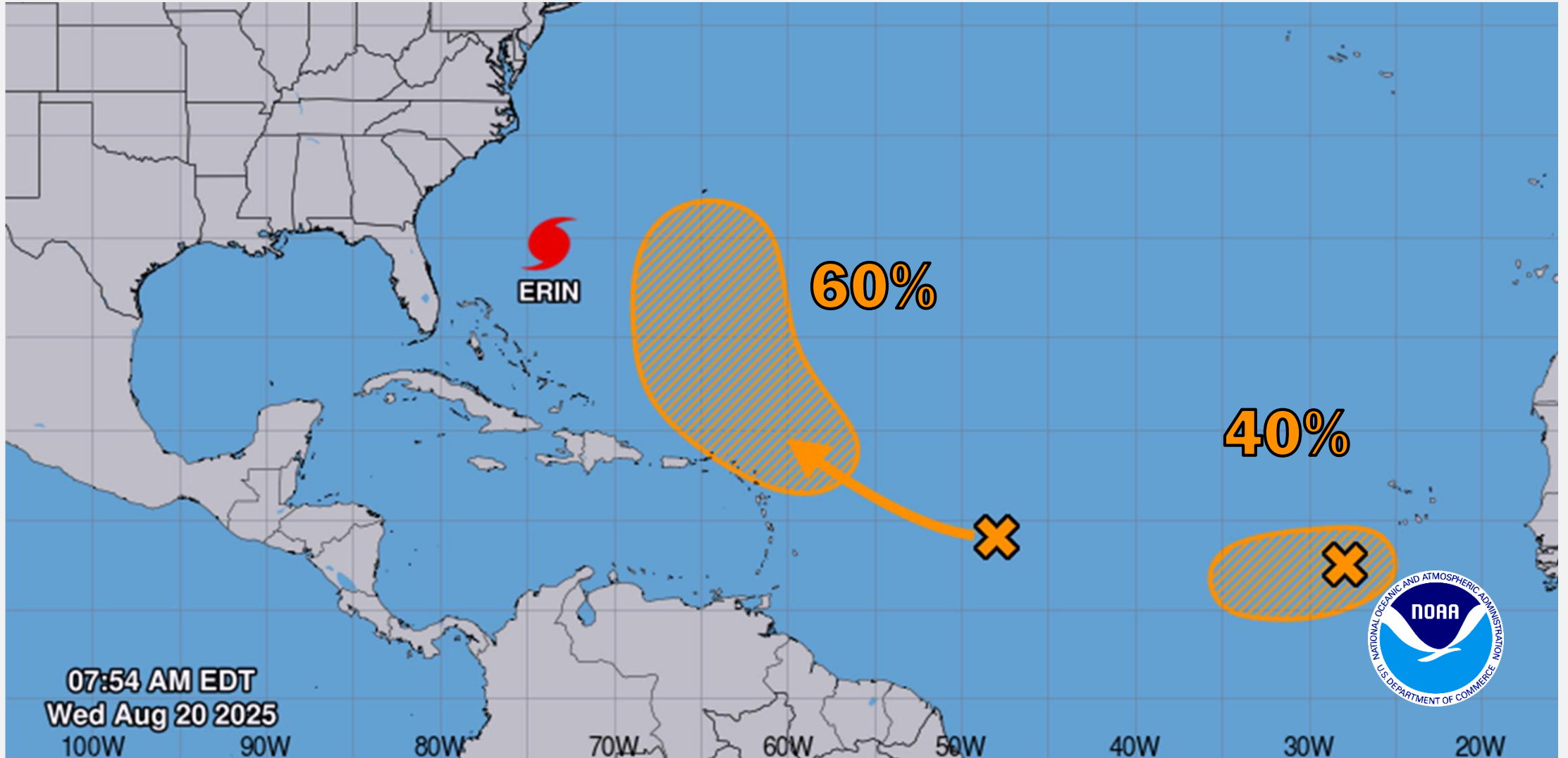
- No significant events



FEMA

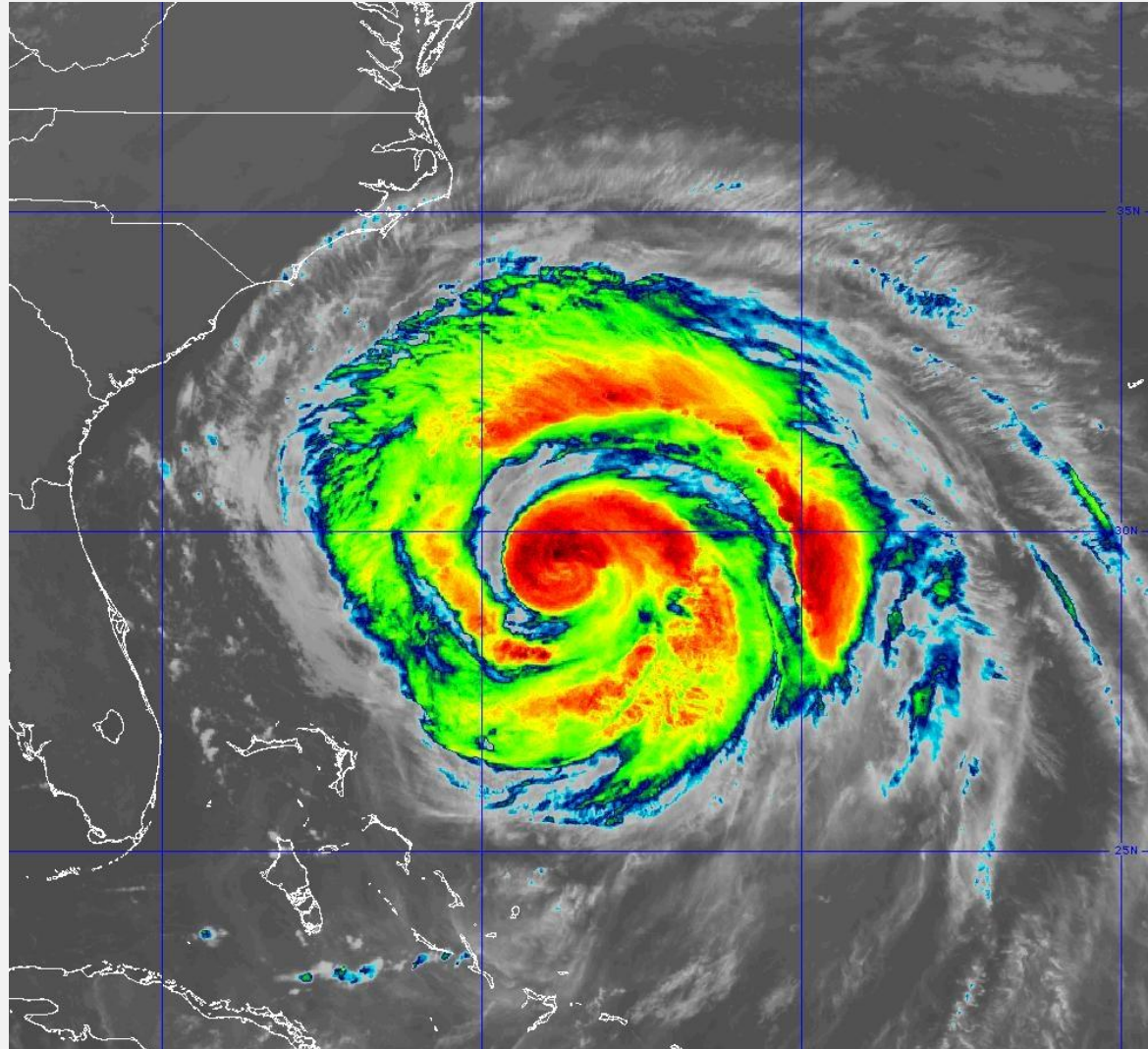
Atlantic Overview

TROPICAL OUTLOOK



Hurricane Erin

SATELLITE IMAGE



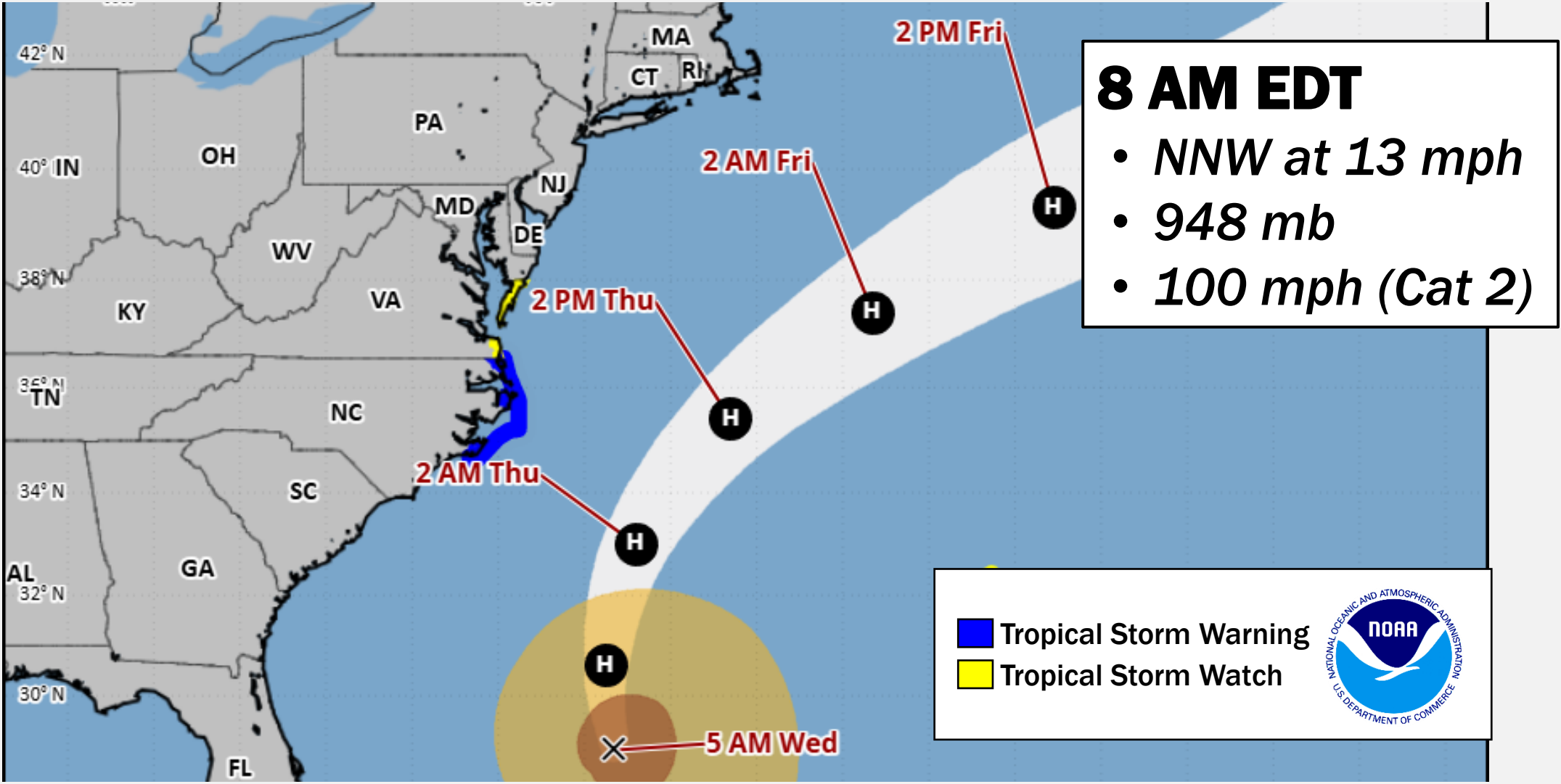
8 AM EDT

- *NNW at 13 mph*
- *948 mb*
- *100 mph (Cat 2)*



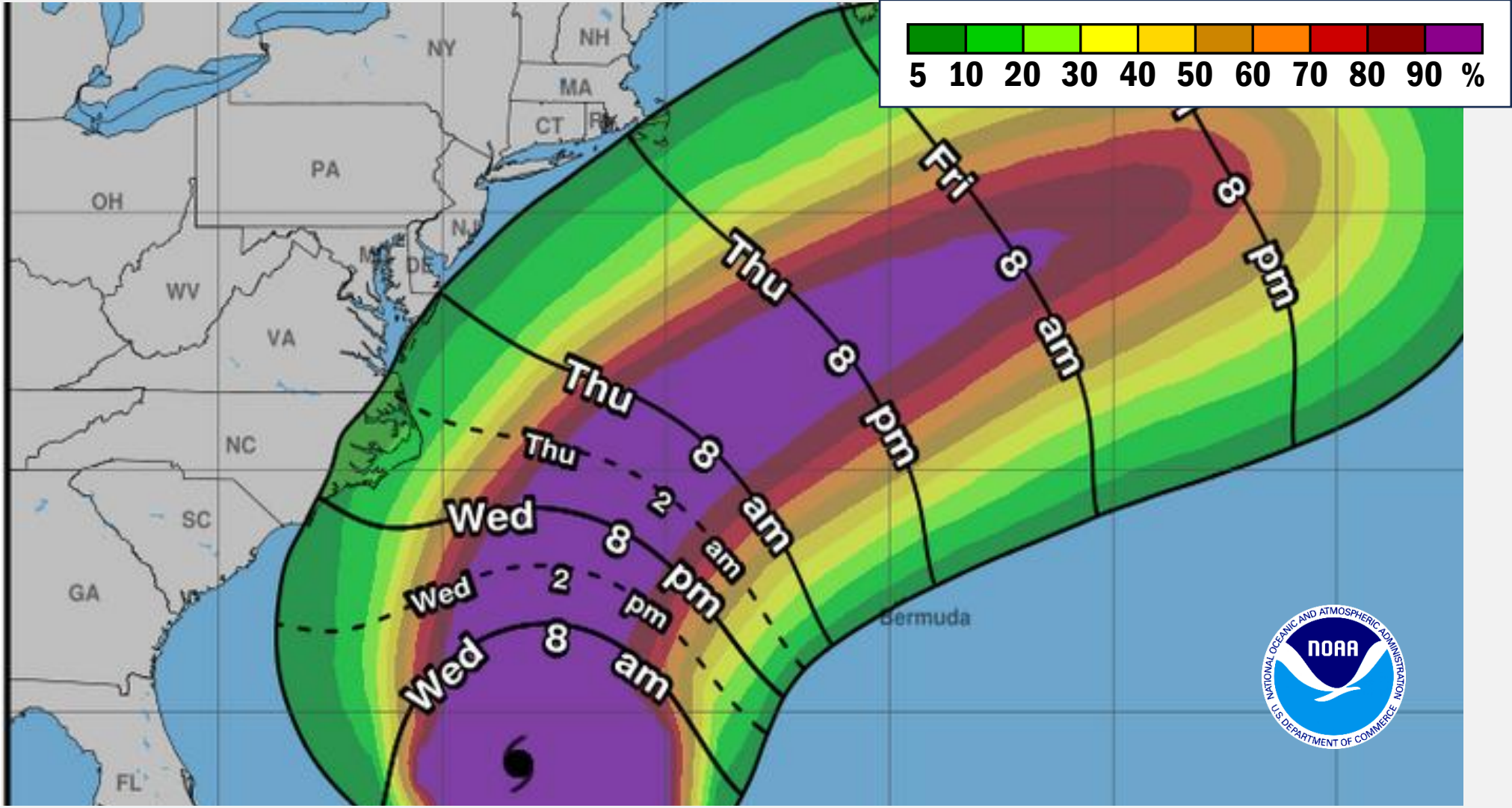
Hurricane Erin

FORECAST TRACK



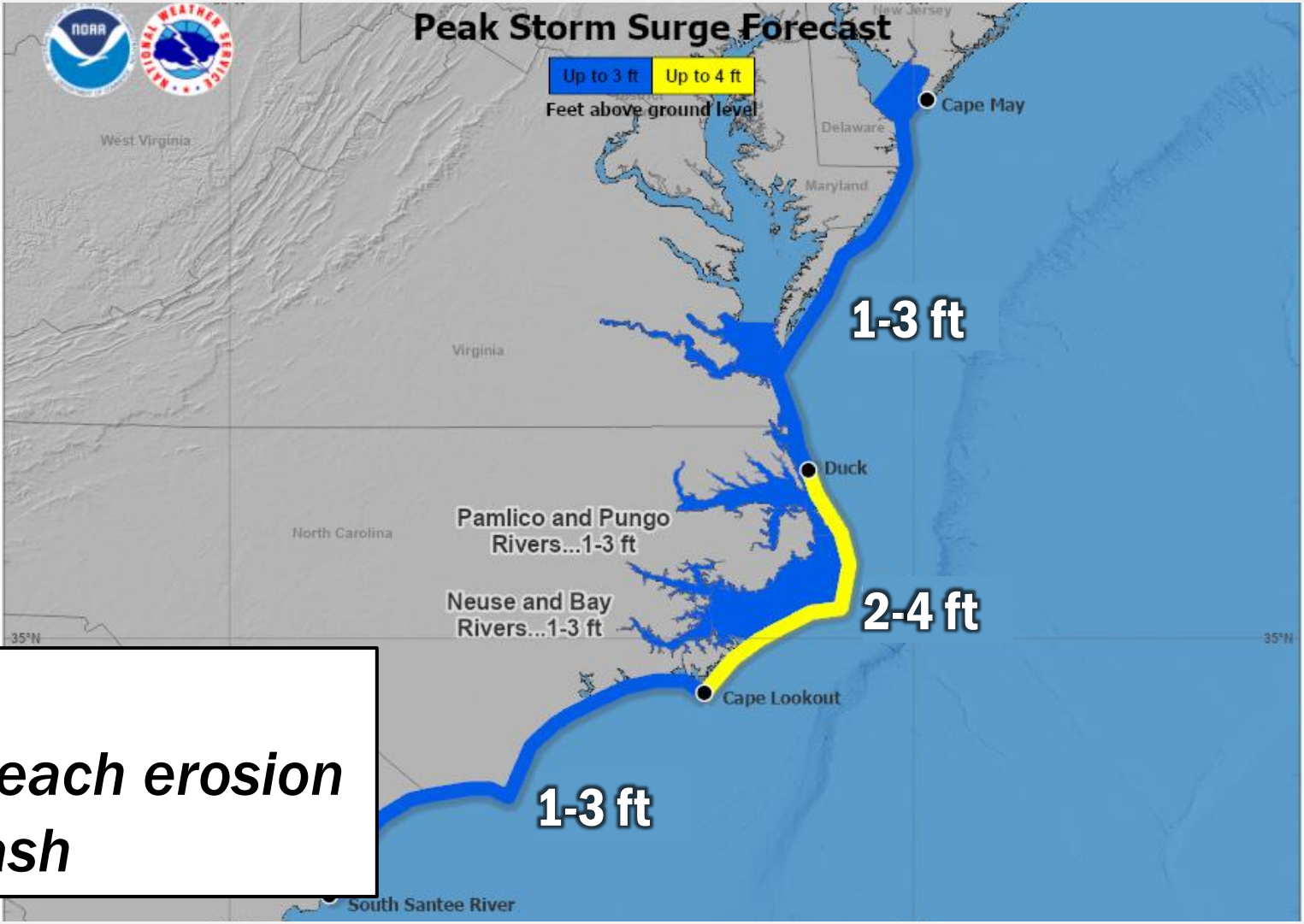
Hurricane Erin

MOST LIKELY ARRIVAL OF WINDS



Hurricane Erin

PEAK STORM SURGE FORECAST



- *Large waves*
- *Significant beach erosion*
- *Dune overwash*

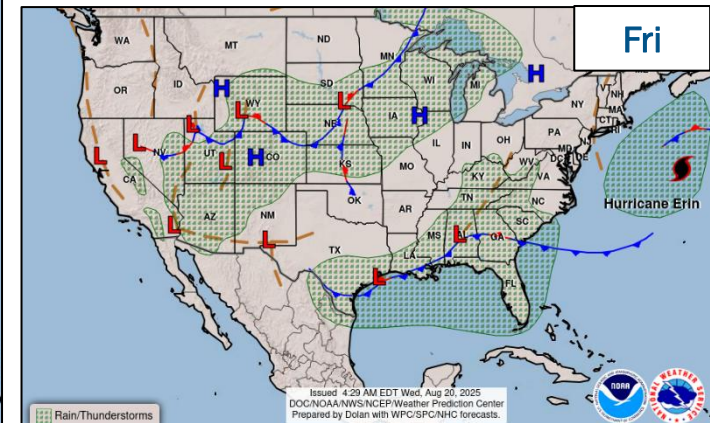
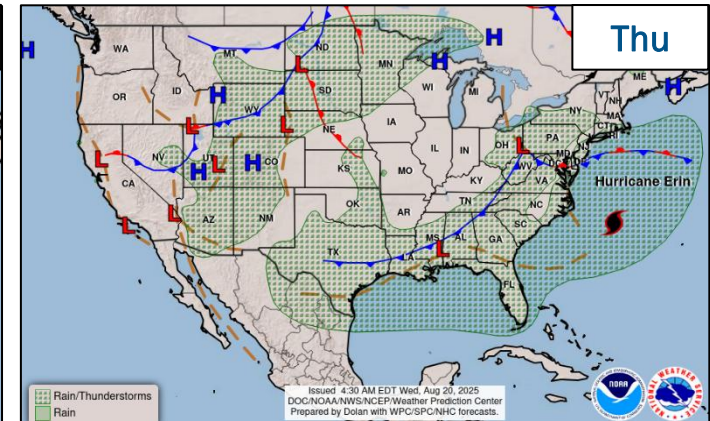
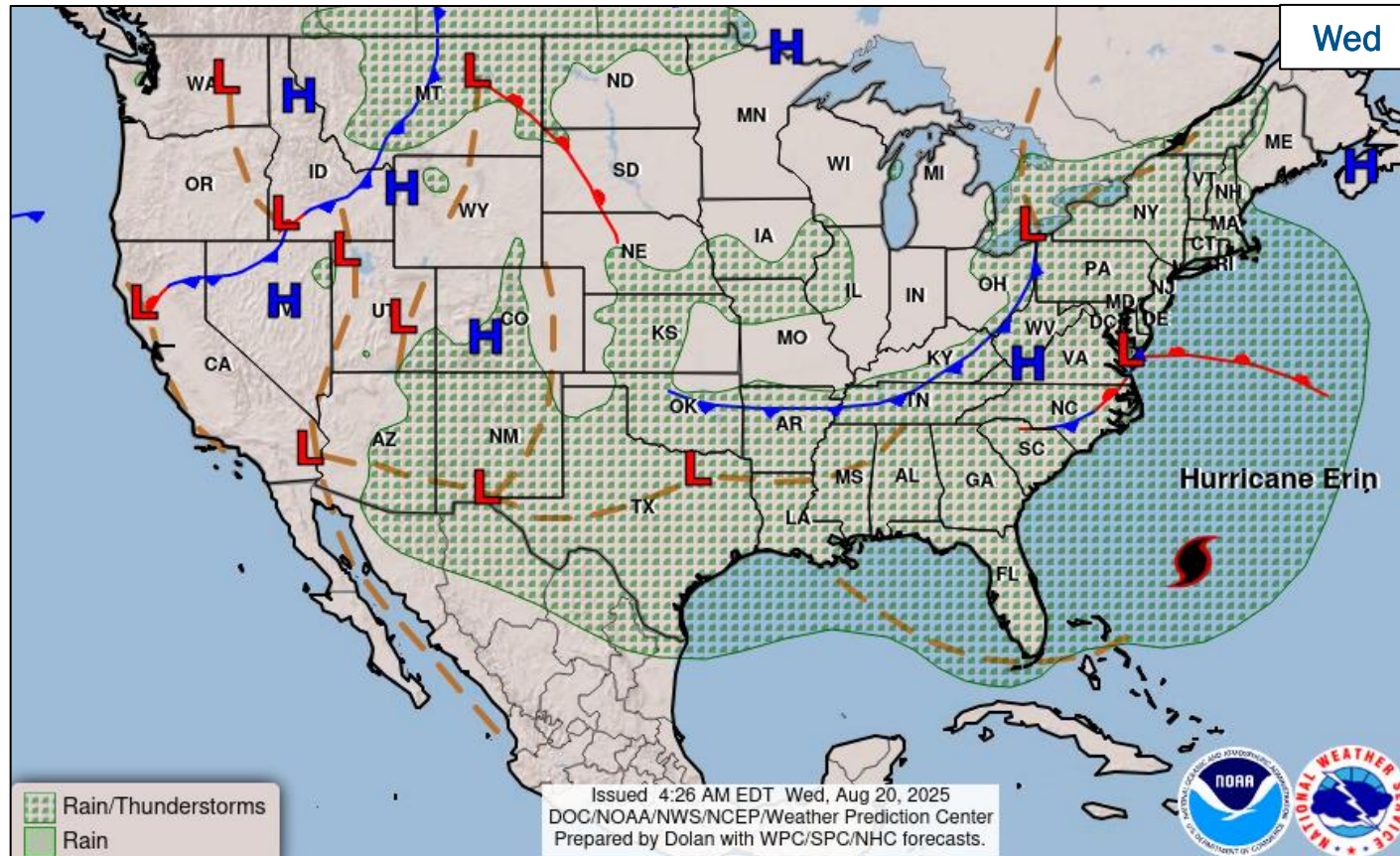


Central and East Pacific Overview

TROPICAL OUTLOOK



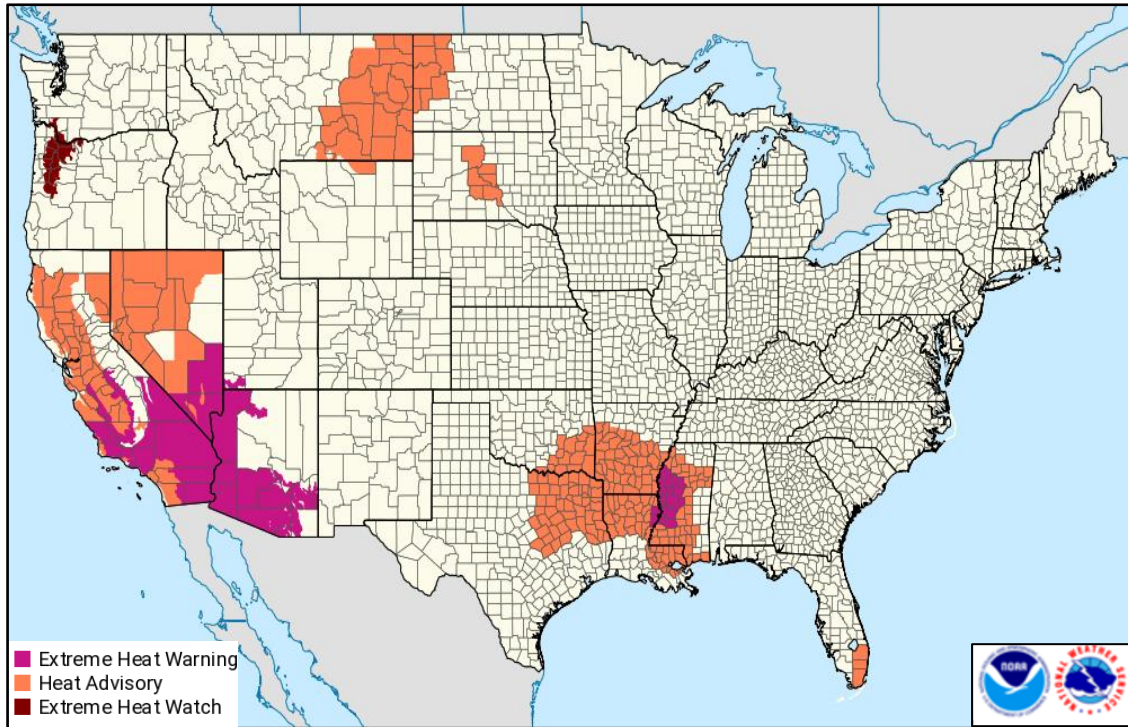
National Weather Forecast



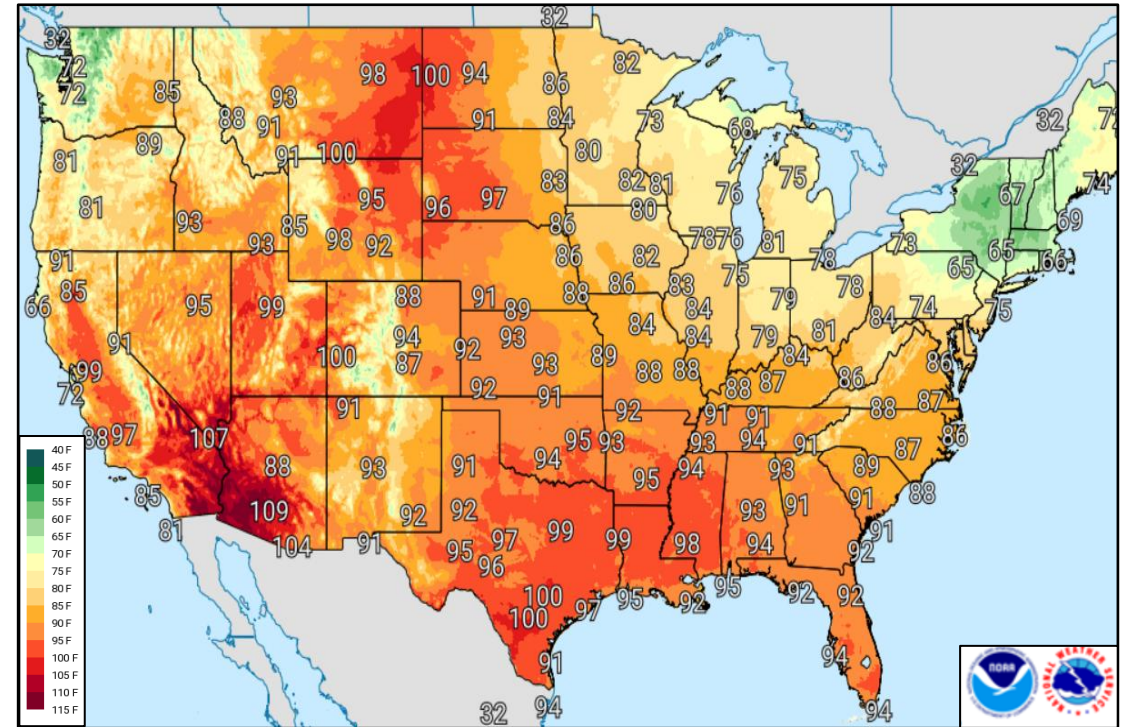
FEMA

National Watch Center

Excessive Heat – Aug 20



Watches & Warnings



High Temperature Forecast



FEMA

Kunia Road Fire – Hawaii - Final

Fire Name (County, ST)	FMAG #	Acres Burned	Percent Contained	Evacuations	Structures (Homes / Other)			Fatalities / Injuries
					Threatened	Damaged	Destroyed	
Kunia Road (Honolulu, HI) FINAL	5609-FM-HI	406	0%	M: 400	H: 120	H: 0	H: 0	0 / 0
				V: 0	O: 0	O: 0	O: 0	

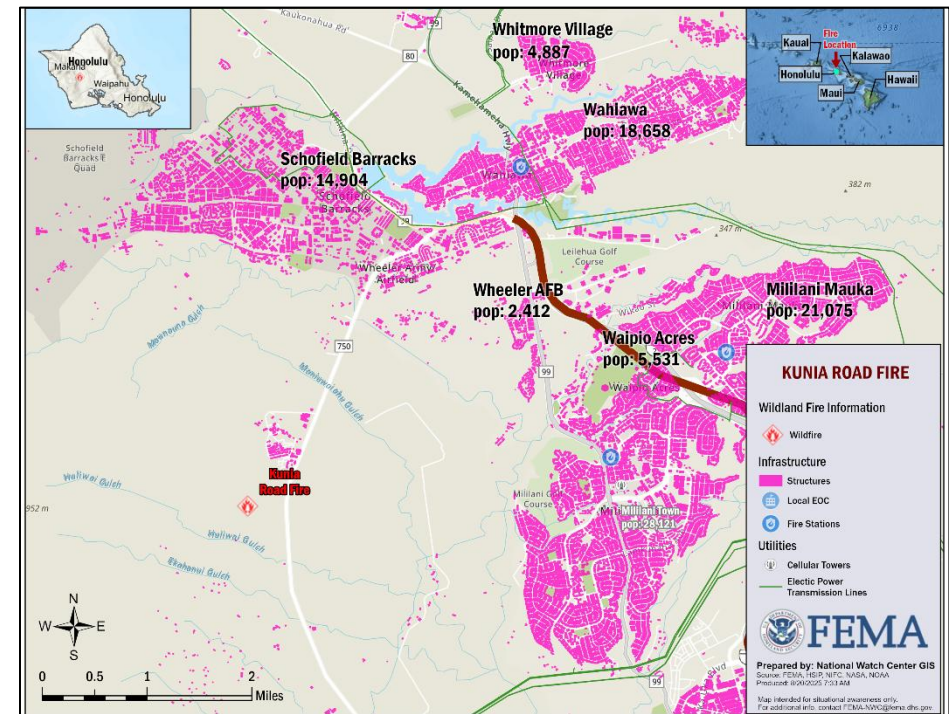
Situation: The FEMA Region 9 Regional Administrator approved a Fire Management Assistance Grant (FMAG) for the Kunia Road Fire, which has burned 406 acres with 0% containment, and has resulted in evacuation orders. The fire is burning on state, and private land south of the community of Kunia Camp (pop. <1k) on the island of Oahu. Evacuation assembly areas have been set up at Hō‘ae‘ae Community Park and Waipahū District Park in Waipahū.

The fire is threatening the Honolulu Forest Reserve, and local transmission and distribution lines. Additionally, Kunia Drive and Kunia Road have been closed in the affected area. *All above information is as of the time of FMAG approval.*

Situation Update: (R9 SpotRep Update 1, as of 2:08 a.m. ET)

- All evacuation orders have been lifted
- Evacuation shelters have been closed
- Closed roads have been reopened

The NWC will continue to monitor in coordination with FEMA Region 9; however, barring significant new developments this is anticipated to be the final report.



National Fire Activity *(as of Aug 19)*

National Preparedness Level

PL 4

Initial Attack Activity <i>(24-hour period)</i>	Light <i>(74 fires)</i>	
New Large Fires	4	
Large Fires Contained	2	
Uncontained Large Fires	41	
Year-to-Date Acres Burned	3,997,080	
Total Responders	15,338	
Type 1 IMTs Deployed	0	
Complex IMTs Deployed	14	

Preparedness Levels Legend

PL 1	Minimal fire activity; many resources available
PL 2	Large wildland fires burning throughout country; resources mobilized from other areas
PL 3	Wildfire activity ongoing throughout 25% of country; National Interagency Coordination Center (NICC) sets priorities, allocates resources, and mobilizes assets at national level
PL 4	High levels of fire activity and areas are competing for firefighting resources; 60% of the nation's wildland firefighting resources committed
PL 5	Extremely high levels of fire activity; 80% of nation's firefighting resources committed

Wildfire Summary

Fire Name (County, ST)	FMAG #	Acres Burned	Percent Contained	Evacuations	Structures (Homes / Other)			Fatalities / Injuries
					Threatened	Damaged	Destroyed	
Monroe Canyon (Sevier/Piute, UT)	5600-FM-UT	73,709 (-29)	84% (+4)	M: 220	H: 110	H: 0	H: 10	0 / 8
				V: 0	O: 102	O: 0	O: 4	
Lee (Rio Blanco, CO)	5603-FM-CO	137,755 (+270)	68% (+8)	M: 79	H: 465	H: 0	H: 7 (+2)	0 / 2
				V: 0	O: 32	O: 0	O: 23 (+7)	
Sunset (Bonner, ID)	5607-FM-ID	3,208	4% (+4)	M: 630 (+380)	H: 315 (+315)	H: 0	H: 6	0 / 1
				V: 0	O: 944 (+944)	O: 0	O: 20	
Red Canyon (Hot Springs, WY)	5608-FM-WY	113,774 (+5,889)	28%	M: 17	H: 0 (-25)	H: 0	H: 0	0 / 1 (+1)
				V: 0	O: 0 (-36)	O: 0	O: 0	

(Evacuations: M = Mandatory / V = Voluntary; Structures: H = Homes and Mixed Commercial/Residential / O = Non-residential Commercial/Other Minor Structures)



FEMA

FEMA Common Operating Picture

17 Joint Field Offices **Supporting** **63** Major Disasters **+** **7** Emergency Declarations **12** Direct Housing Missions **9** RSF-Supported Disasters **6** Joint Recovery Offices

Wednesday August 20, 2025 8:30 a.m. ET

FEMA HQ	
NWC	NRCC
Monitoring	Steady State
FEMA REGIONS	
Watch	RRCC
Monitoring	R1 Rostered
Monitoring	R2 Level 3
Monitoring	R3 Rostered
Enhanced	R4 Rostered
Monitoring	R5 Rostered
Monitoring	R6 Rostered
Monitoring	R7 Rostered
Monitoring	R8 Rostered
Monitoring	R9 Rostered
Monitoring	R10 Rostered

N-IMATs	
2-5 Teams Available	
Red	
White	
Blue	
Gold	
HS	

REGIONAL BREAKDOWN				
	JFO	DR	EM	JRO
R1	1	1	0	0
R2	0	0	0	2
R3	2	7	1	0
R4	7	21	5	1
R5	0	2	0	0
R6	4	9	1	3
R7	1	18	0	0
R8	1	1	0	0
R9	1	3	0	0
R10	0	1	0	0

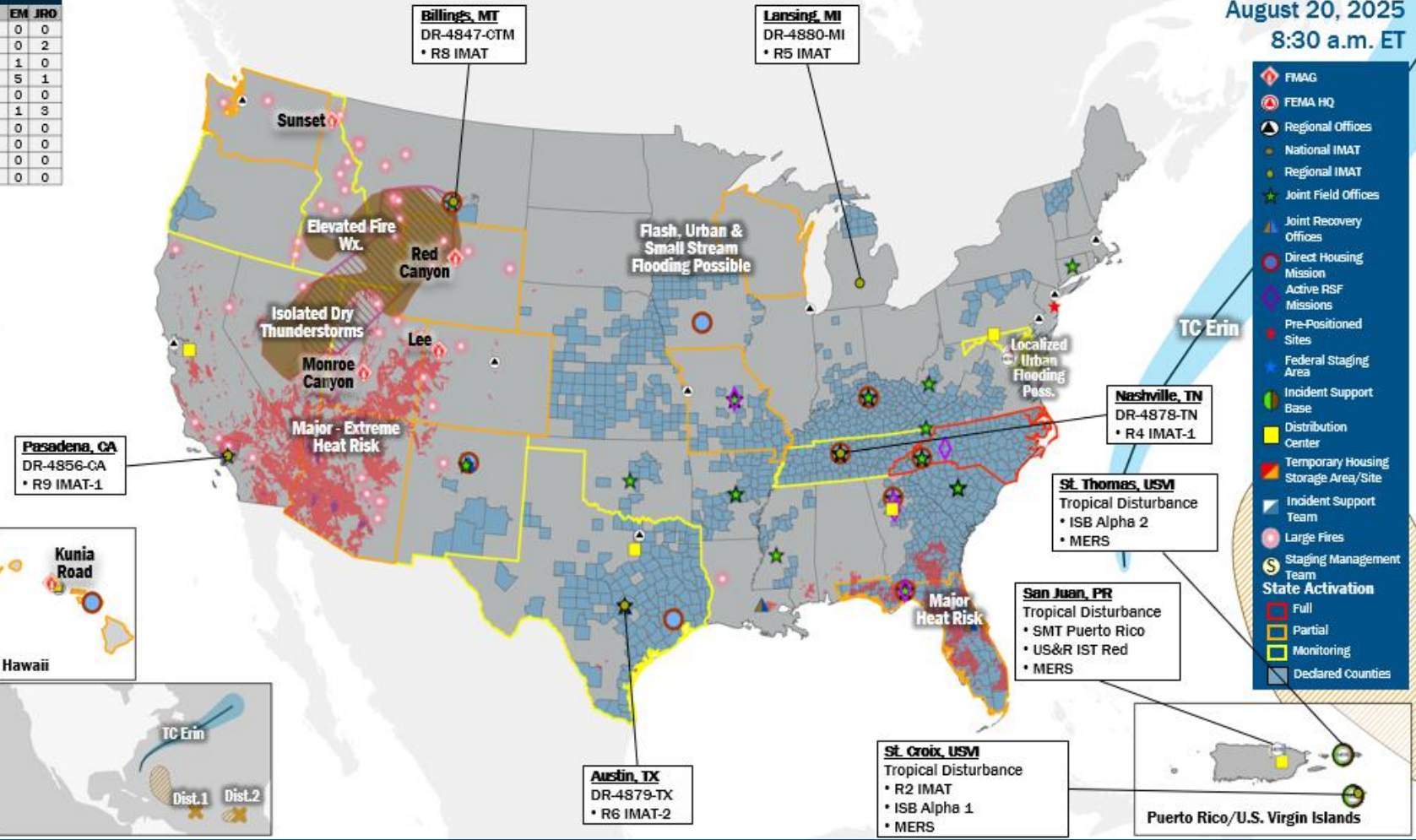
R-IMATs	
≥ 7 Teams Available	
R1	1
R2	VI (Aug 12)
R3	3
R4 (1)	TN (Jun 23)
R4 (2)	
R5	MI (Jul 27)
R6 (1)	Reconstituting
R6 (2)	TX (Jul 6)
R7	
R8	MT (Jul 6)
R9 (1)	CA (Jan 8)
R9 (2)	
R10	2

Notes:
 NRCC/RWCs/RRCCs:
 • R2 RRCC: TC Erin
 • R4 Watch: TC Erin
 • R5 Watch: Staffing (Dayshift 7:00 a.m. to 7:00 p.m. ET)

State EOCs:
 • AZ/CO/HI/ID/OR/UT/WA/WY: Wildfires
 • MD/ND: Severe Weather
 • FL/TN: Previous Incidents
 • AK/MD/NM/TX/WI: Flooding
 • AS: Flooding/Landslides
 • NC: TC Erin

Volunteer Force	
Rostered 7,985	Deployed 3
Surge Capacity Force	
Rostered 8,037	Deployed 1

Fully Mission Capable (FMC)
Partially Mission Capable (PMC)
Not Mission Capable (NMC)
Deployed



- FMAG
- FEMA HQ
- Regional Offices
- National IMAT
- Regional IMAT
- Joint Field Offices
- Joint Recovery Offices
- Direct Housing Mission
- Active RSF Missions
- Pre-Positioned Sites
- Federal Staging Area
- Incident Support Base
- Distribution Center
- Temporary Housing Storage Area/Site
- Incident Support Team
- Large Fires
- Staging Management Team
- State Activation
 - Full
 - Partial
 - Monitoring
 - Declared Counties

IM Workforce

12,061 (-11) Assigned
 4,091 (+14) Unavailable
 5,654 (+37) Deployed

19% (-1) / 2,316 (-62) Available

IM Cadre Availability

18 Cadres ≤ 25% Availability

Alternative Dispute Resolution: 19% (6/31); Civil Rights: 4% (4/108); Disability Integration 15% (4/26); External Affairs: 11% (37/327); Environmental Planning and Historic Preservation: 9% (65/698); Field Leadership: 4% (5/122); Financial Management: 17% (32/189); Hazard Mitigation: 6% (49/808); Human Resources: 13% (21/166); Individual Assistance: 22% (531/2,407); Interagency Recovery Coordination: 20% (49/249); Information Technology: 18% (109/612); Logistics: 20% (306/1,545); Operations: 14% (50/365); Public Assistance: 12% (253/2,082); Planning: 6% (21/371); Safety: 4% (4/91); Security: 15% (17/113)

MERS

≥ 66%
 36 Assigned
 6 Unavailable
 2 Deployed
 28 Available

US&R

≥ 66%
 28 Assigned
 1 Unavailable
 0 Deployed
 27 Available

FCO

≤ 1 Type I
 39 Assigned
 3 Unavailable
 33 (20 FCOR) Deployed
 3 Available

Joint Preliminary Damage Assessments

Region	State / Location	Incident	IA	Number of Counties		Start - End
			PA	Requested	Complete	
R5	IN	Severe Weather and Flooding Mar 30 - Apr 9	IA	14	2	8/14 - TBD
			PA	0	0	N/A
	WI	Severe Weather and Flooding Aug 10-12	IA	3	0	8/19 - TBD
			PA	0	0	N/A
R7	KS	Severe Storms and Tornado Jul 17-22	IA	0	0	N/A
			PA	15 (+10)	0	8/18 - TBD
	NE	Severe Thunderstorms Aug 8-10	IA	0	0	N/A
			PA	13	0	8/18 - TBD
R10	AK	Chevak Structure Fire Jul 8	IA	0	0	N/A
			PA	1	0	8/19 - TBD



FEMA

Declaration Requests in Process – 6

State / Tribe / Territory – Incident Description	Type	IA	PA	HM	Requested
CTM* – Severe Storms, Flooding, and Straight-line Winds	DR		X	X	Jul 17
ND – Severe Storms, Straight-line Winds, and Tornadoes	DR		X	X	Jul 21
NE – Severe Storms and Straight-line Winds	DR		X	X	Jul 24
NC – Tropical Depression Chantal	DR		X	X	Aug 5
KS – Severe Storms, Straight-line Winds, Tornadoes, and Flooding	DR		X	X	Aug 5
SWO** – Severe Storms and Flooding	DR	X	X	X	Aug 5

* Crow Tribe of Montana

** Sisseton-Wahpeton Oyate



FEMA

Declaration Amendments

Declaration	Number	Issued	Action
FEMA-4879-DR-TX	7	Aug 19	Adds 1 county for Public Assistance



FEMA



FEMA

Helping people before, during, and after disasters.



Scan to subscribe to this briefing.