

FEMA National Watch Center

Daily Operations Briefing

Tuesday, August 19, 2025

8:30 a.m. ET



FEMA

National Current Ops / Monitoring

New Significant Incidents / Ongoing Ops

- No new significant incidents / operations

Hazard Monitoring

- Heavy Rain / Flash Flooding – Southeastern US and Southern Appalachians
- Excessive Heat – Southwest and Lower Mississippi Valley
- Tropical Activity:
 - Atlantic:
 - Hurricane Erin (CAT 3)
 - Disturbance 1: Med (60%)
 - Disturbance 2: Low (30%)
 - Western Pacific:
 - Invest 90W

Disaster Declaration Activity

- Four amendments issued

Event Monitoring

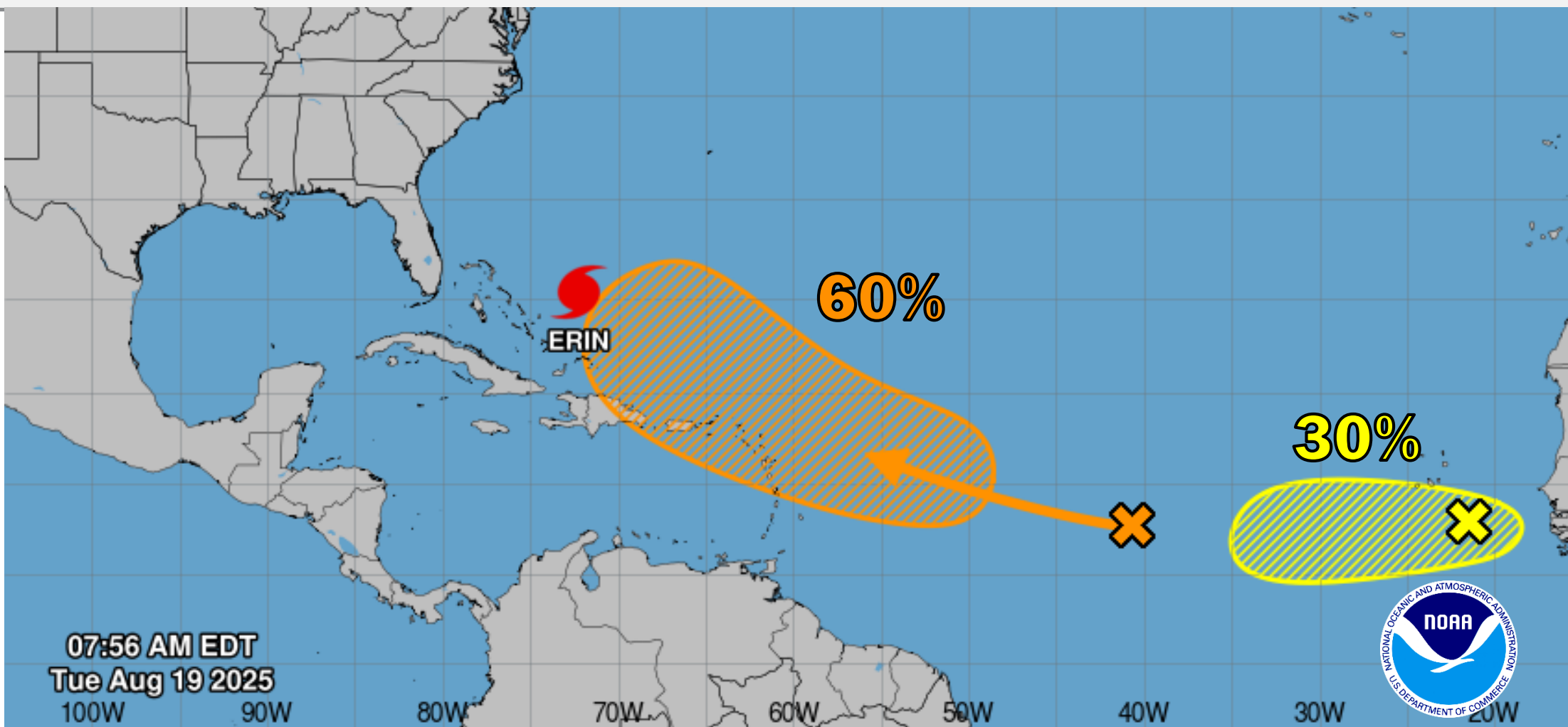
- No new significant events



FEMA

Atlantic Overview

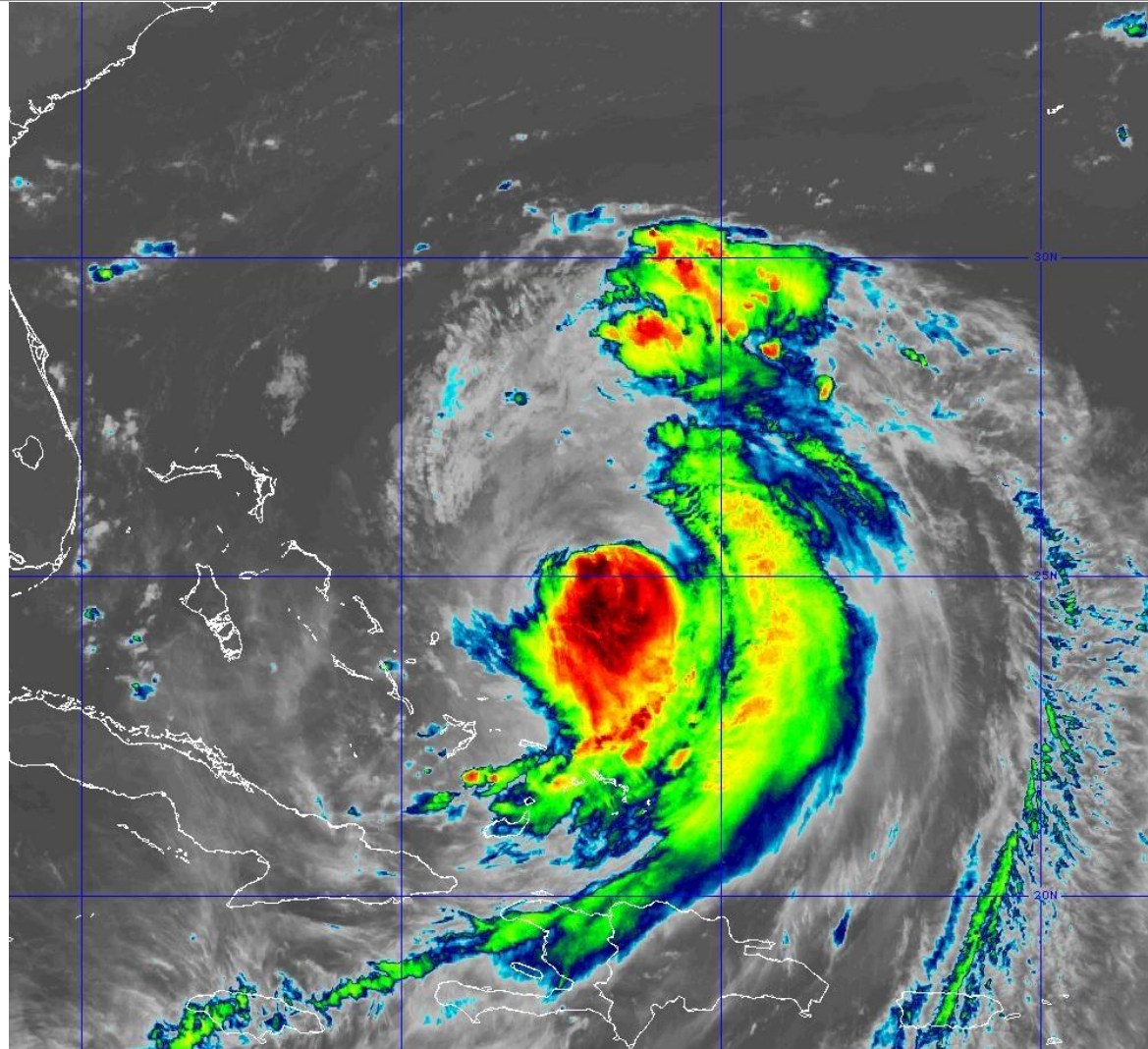
TROPICAL OUTLOOK



Current Disturbances and Seven-Day Cyclone Formation Chance: < 40% 40-60% > 60%

Hurricane Erin

SATELLITE LOOP



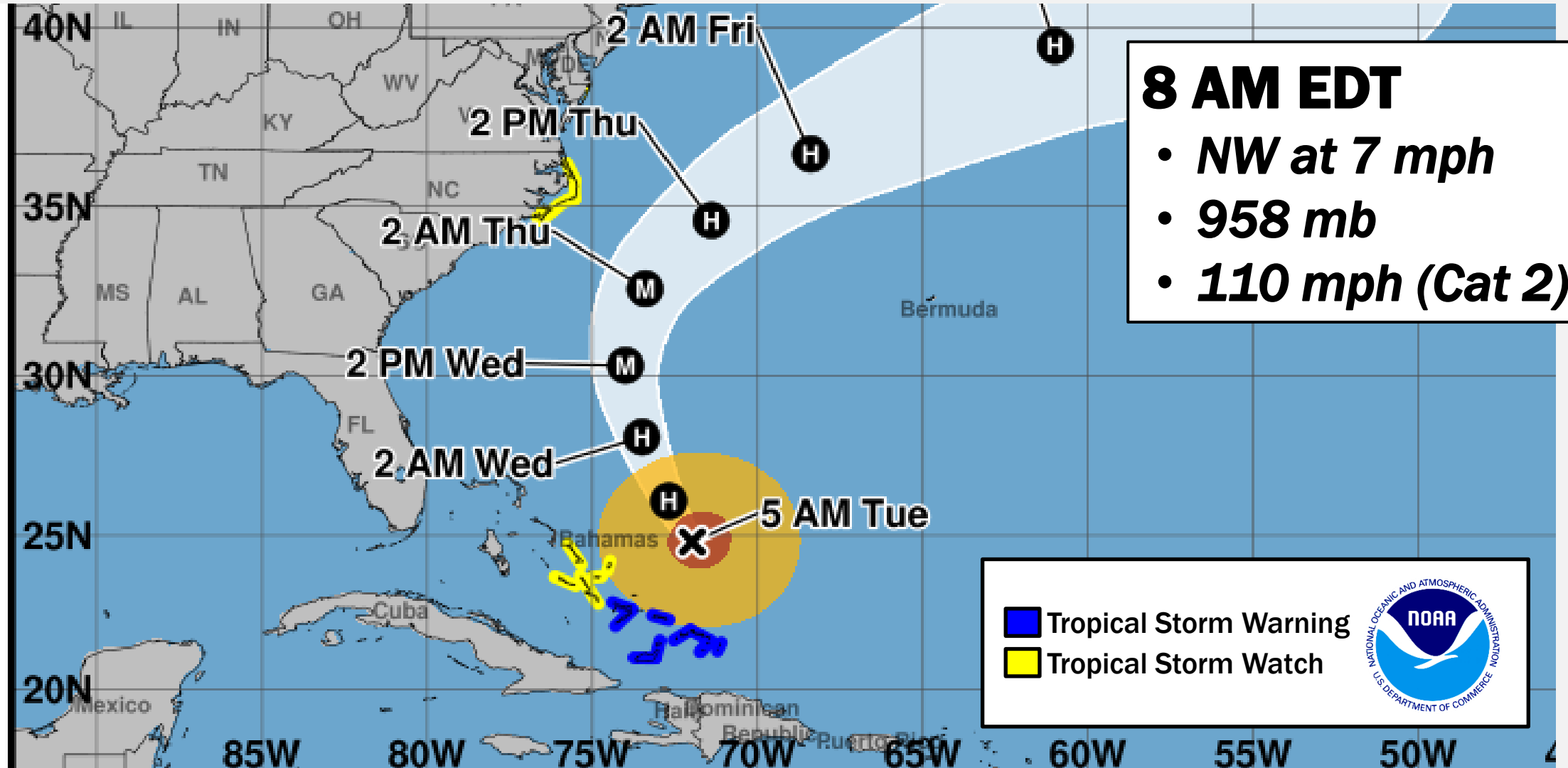
8 AM EDT

- ***NW at 7 mph***
- ***958 mb***
- ***110 mph (Cat 2)***



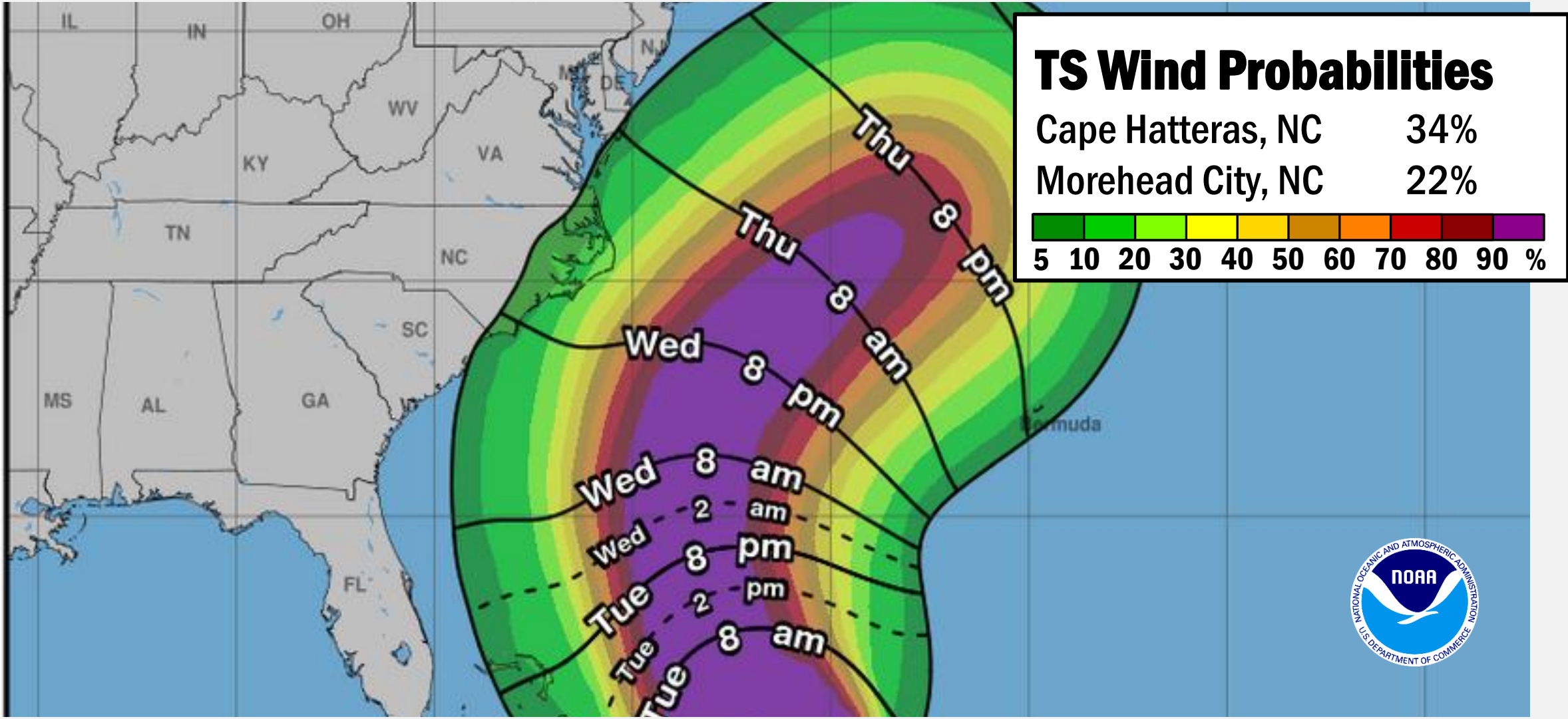
Hurricane Erin

FORECAST TRACK



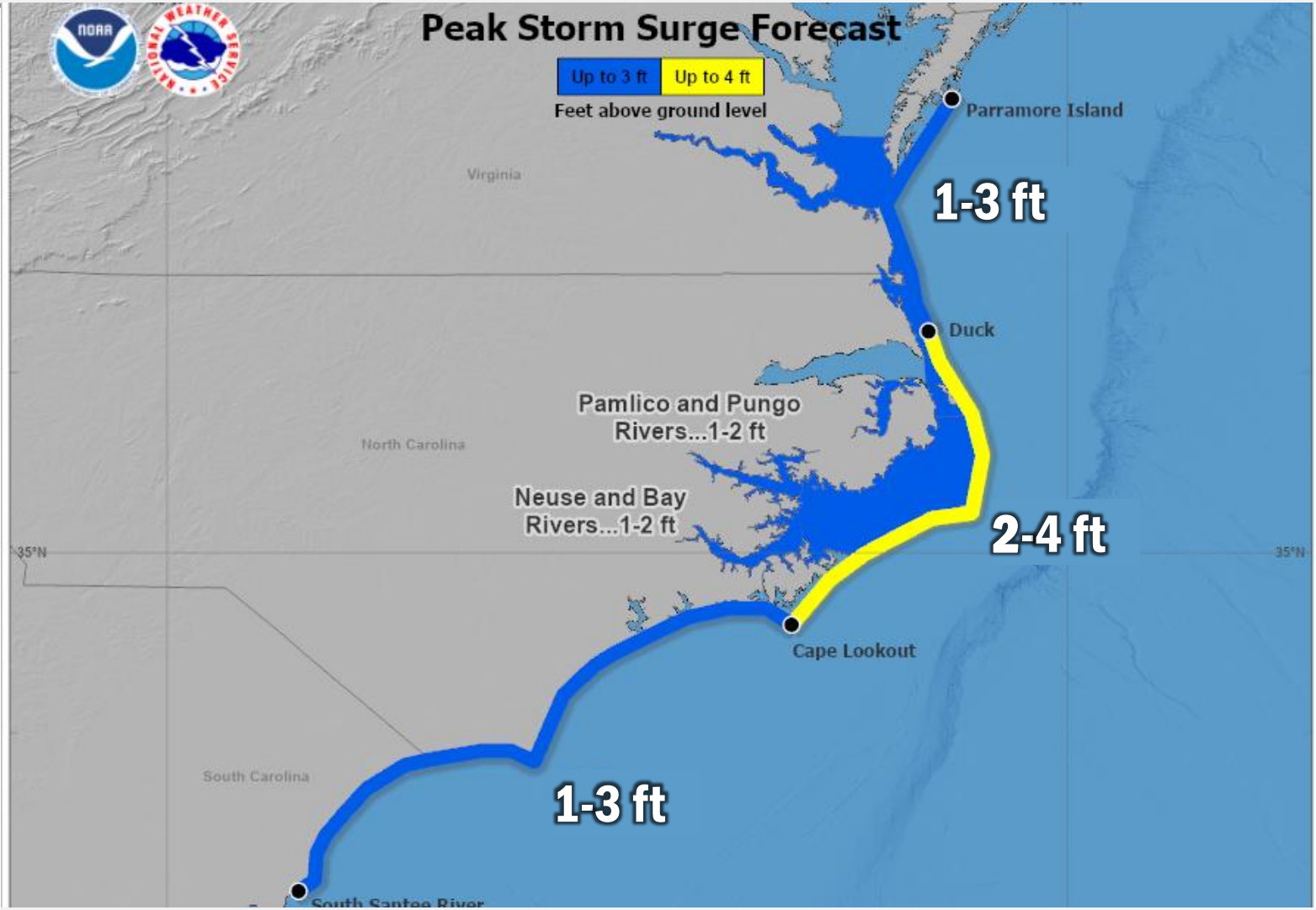
Hurricane Erin

MOST LIKELY ARRIVAL OF WINDS



Hurricane Erin

PEAK STORM SURGE FORECAST



Central and East Pacific Overview

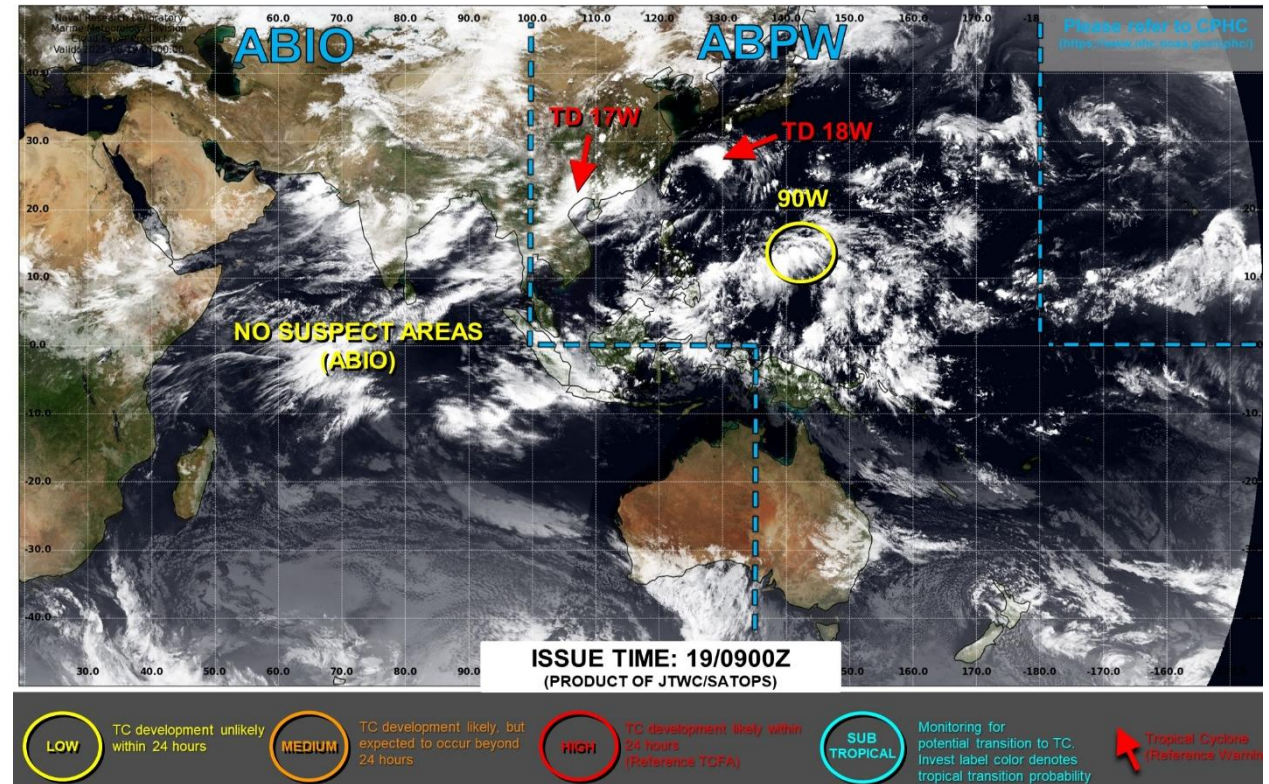
TROPICAL OUTLOOK



Invest 90W – Western Pacific

Invest 90W: (as of 5:00 a.m. ET)

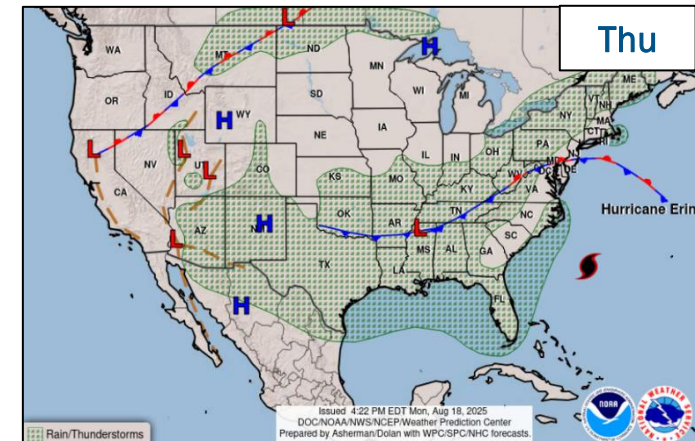
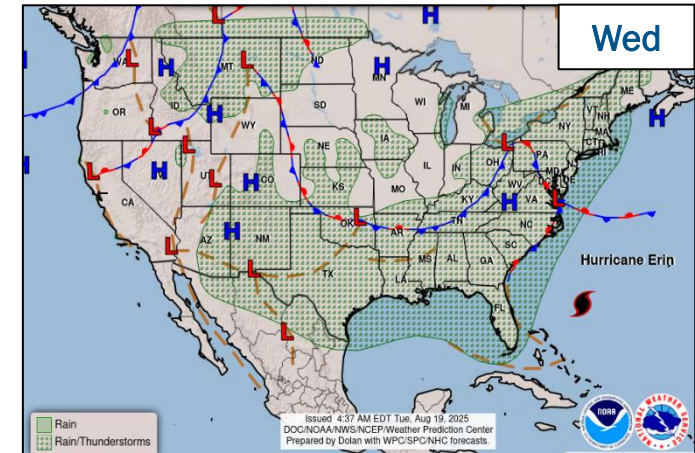
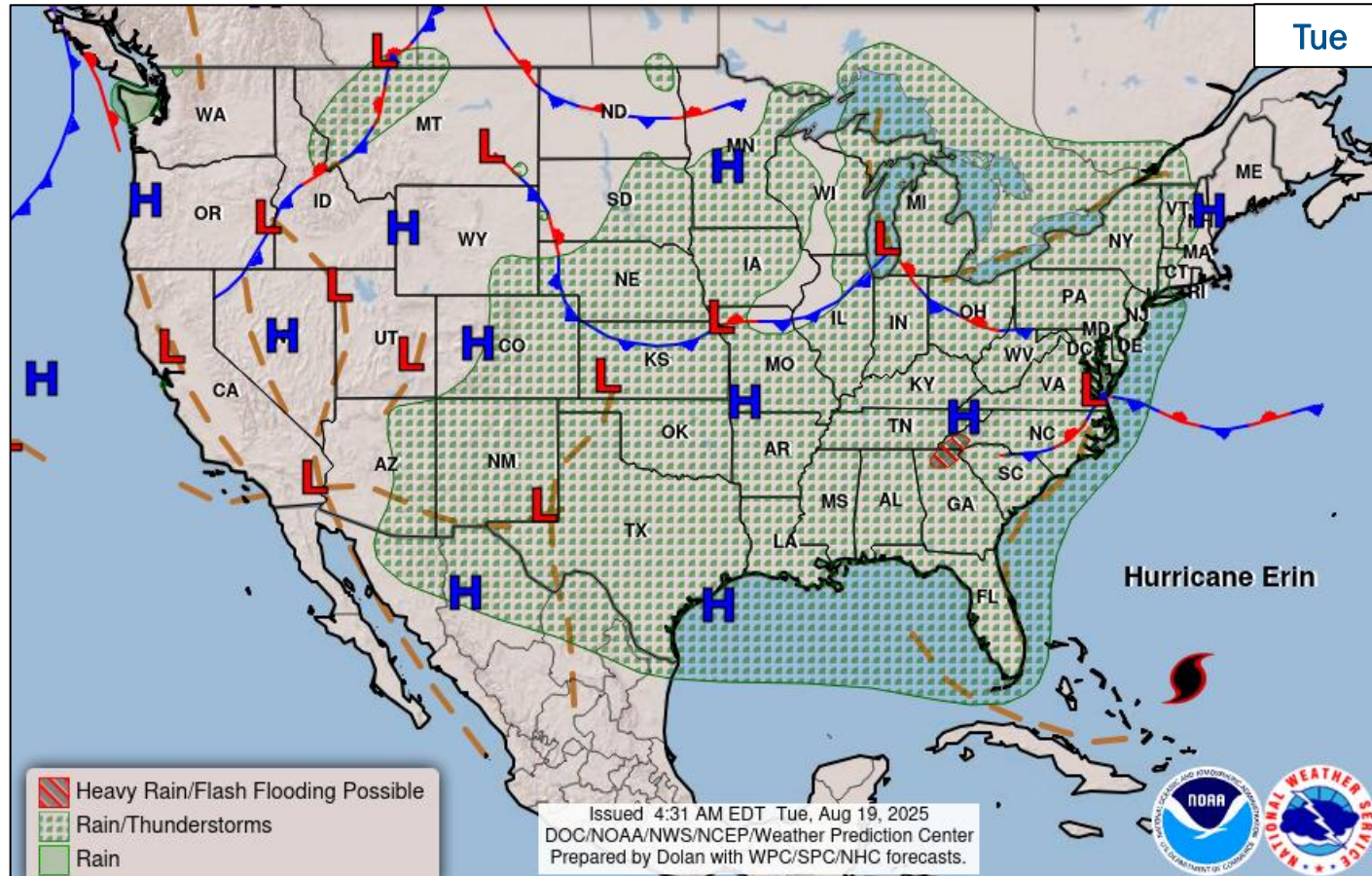
- Located 411 miles SW of Andersen AFB, Guam
- Maximum sustained winds of 20-26 mph
- Potential for development of a significant tropical cyclone within the next 24 hours remains low



FEMA

National Watch Center

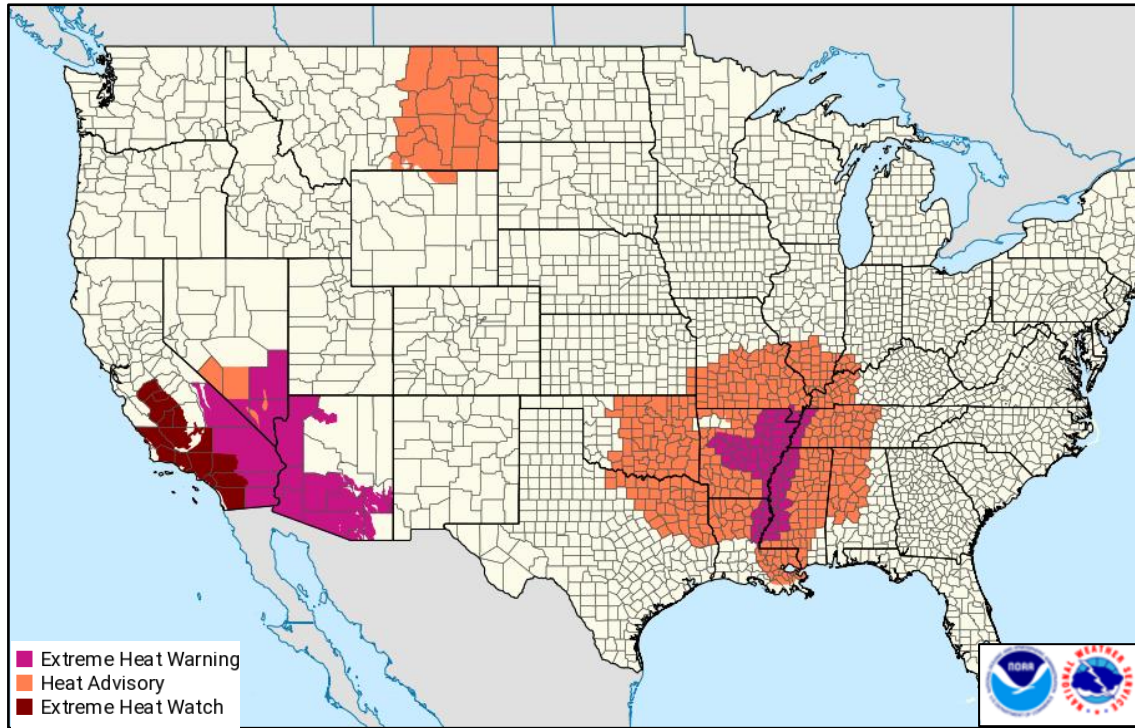
National Weather Forecast



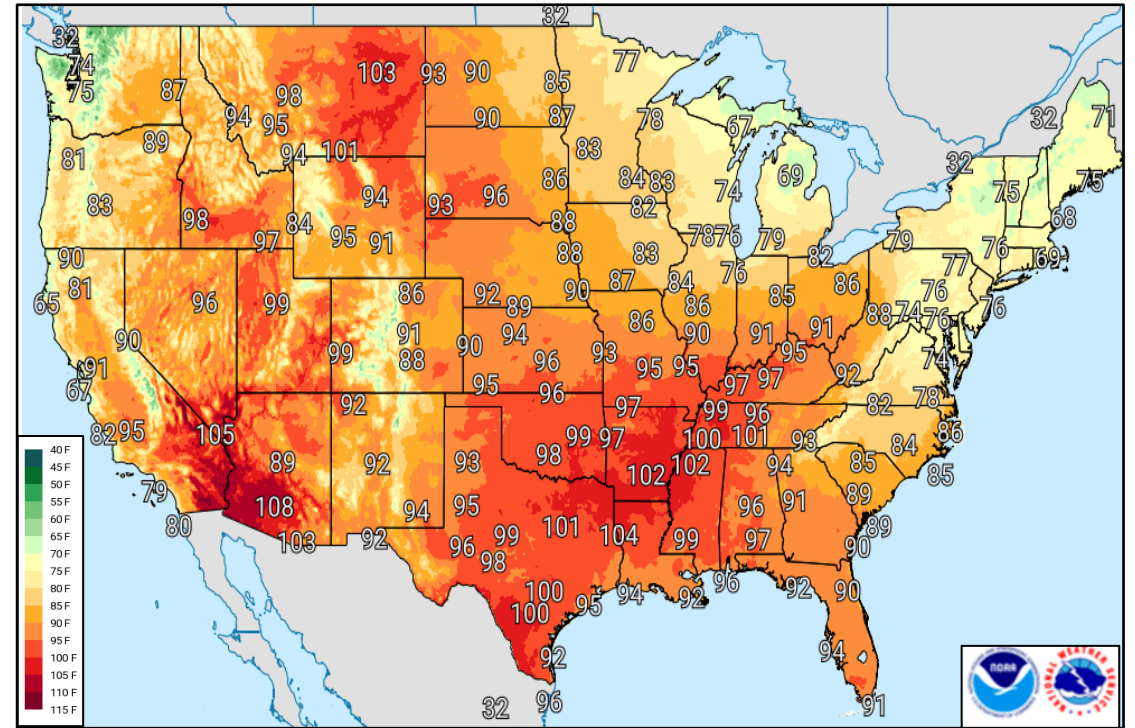
FEMA

National Watch Center

Excessive Heat – Aug 19



Watches & Warnings



High Temperature Forecast



FEMA

Wildfire Summary

Fire Name (County, ST)	FMAG #	Acres Burned	Percent Contained	Evacuations	Structures (Homes / Other)			Fatalities / Injuries
					Threatened	Damaged	Destroyed	
Monroe Canyon (Sevier/Piute, UT)	5600-FM-UT	73,738 (+83)	80% (+5)	M: 220	H: 110	H: 0	H: 10	0 / 8
				V: 0	O: 102	O: 0	O: 4	
Lee (Rio Blanco, CO)	5603-FM-CO	137,485 (+20)	60%	M: 79	H: 465 (-2,047)	H: 0	H: 5	0 / 2
				V: 0	O: 32 (-45)	O: 0	O: 16	
Sunset (Bonner, ID)	5607-FM-ID	3,208 (+9)	0%	M: 250	H: 0	H: 0	H: 6	0 / 1 (+1)
				V: 0	O: 0	O: 0	O: 20	
Red Canyon (Hot Springs, WY)	5608-FM-WY	107,885 (+16,304)	28% (+28)	M: 17 (+10)	H: 25 (-75)	H: 0	H: 0	0 / 0
				V: 0	O: 36 (-164)	O: 0	O: 0	

(Evacuations: M = Mandatory / V = Voluntary; Structures: H = Homes and Mixed Commercial/Residential / O = Non-residential Commercial/Other Minor Structures)

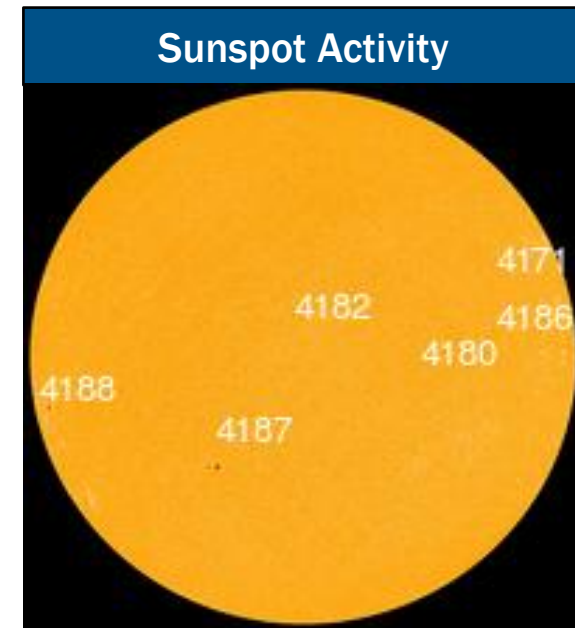
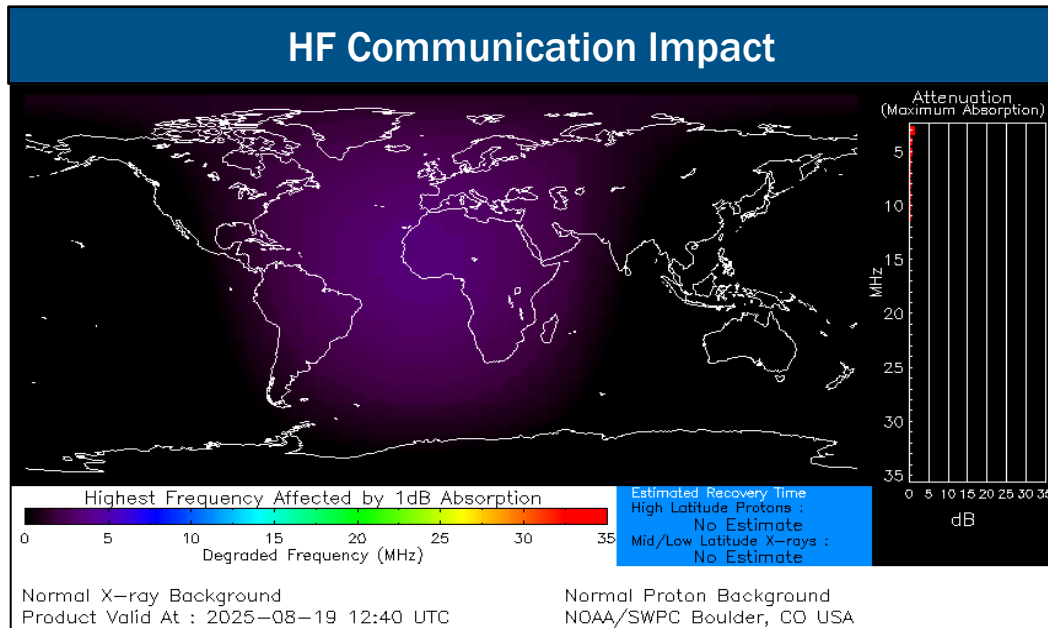


FEMA

Space Weather Outlook

Minor	Space Weather Activity	Geomagnetic Storms	Solar Radiation	Radio Blackouts
Past 24 Hours	Minor	None	None	R1
Next 24 Hours	Minor	G1	None	None

For further information on NOAA Space Weather Scales refer to: <http://www.swpc.noaa.gov/noaa-scales-explanation>
 For further information on Sunspot Activity refer to: <https://www.swpc.noaa.gov/phenomena/sunspotsolar-cycle>



FEMA

FEMA Common Operating Picture

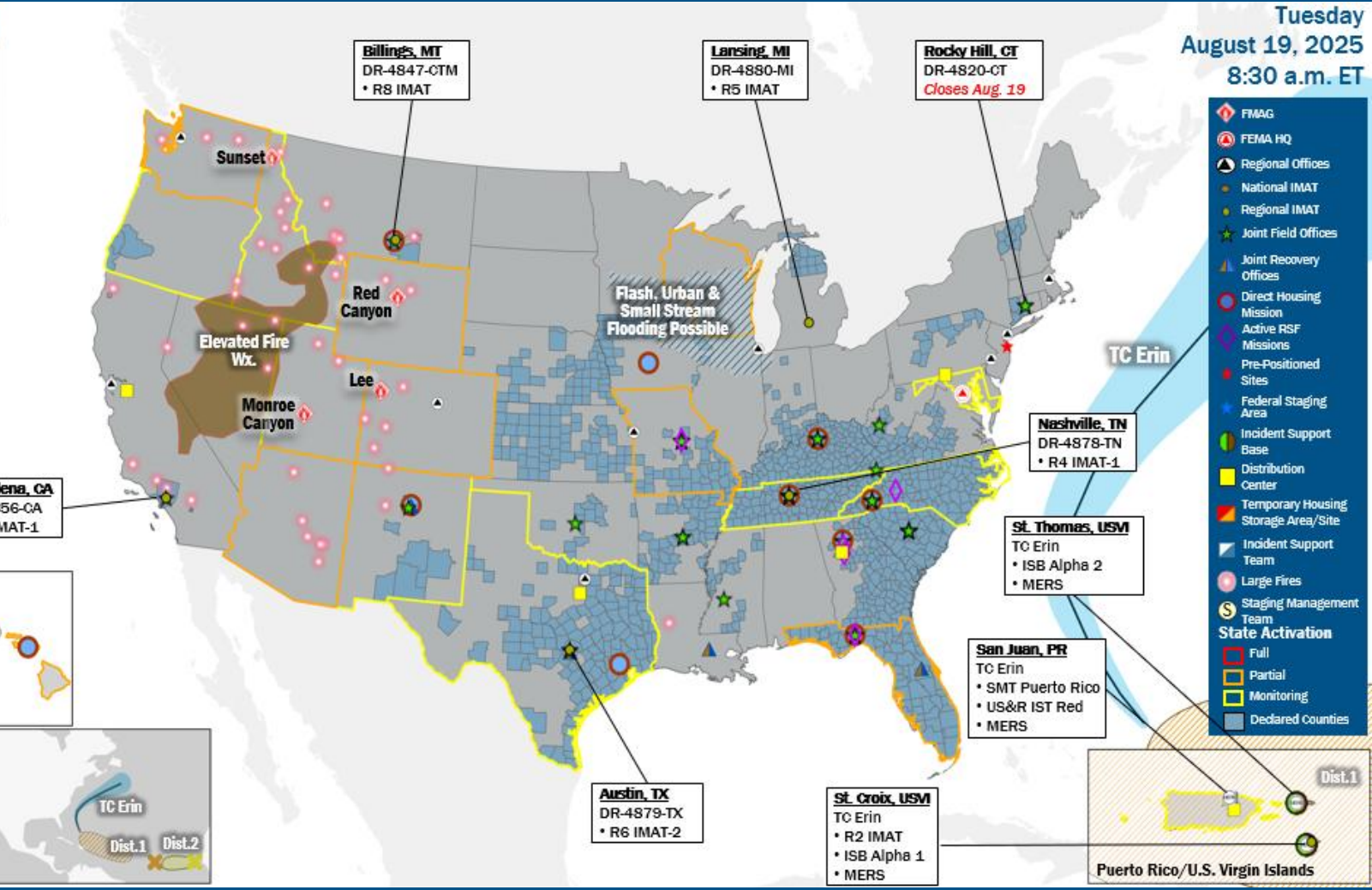
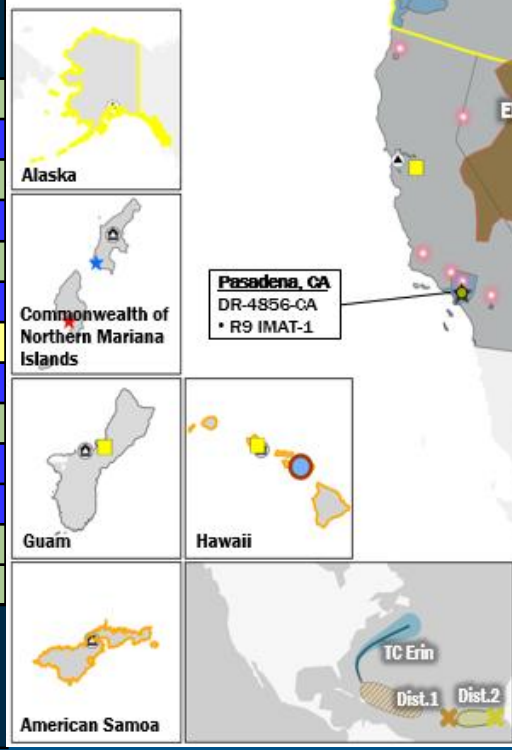
17 Joint Field Offices **Supporting** **64 + 7** Major Disasters Emergency Declarations **12** Direct Housing Missions **9** RSF-Supported Disasters **6** Joint Recovery Offices

Tuesday August 19, 2025 8:30 a.m. ET

FEMA HQ	
NWC	NRCC
Monitoring	Steady State
FEMA REGIONS	
Watch	RRCC
Monitoring	R1 Rostered
Monitoring	R2 Level 3
Monitoring	R3 Rostered
Monitoring	R4 Rostered
Monitoring	R5 Rostered
Monitoring	R6 Rostered
Monitoring	R7 Rostered
Monitoring	R8 Rostered
Monitoring	R9 Rostered
Monitoring	R10 Rostered
Notes:	
NRCC/RWCs/RRCCs: • R2 RRCC: TC Erin • R5 Watch: Staffing (Dayshift 7:00 a.m. to 7:00 p.m. ET)	State EOCs: • AZ/CO/HI/ID/OR/UT/WA/WY: Wildfires • MD/MD: Severe Weather • FL/TN: Previous Incidents • AK/MD/NM/TX/WI: Flooding • AS: Flooding/Landslides • NC/PR: TC Erin
Volunteer Force	
Rostered 7,985	Deployed 3
Surge Capacity Force	
Rostered 8,037	Deployed 1

N-IMATs	
2-5 Teams Available	
Red	
White	
Blue	
Gold	
HS	
R-IMATs	
≥ 7 Teams Available	
R1	1
R2	VI (Aug 12)
R3	3
R4 (1)	TN (Jun 23)
R4 (2)	
R5	MI (Jul 27)
R6 (1)	Reconstituting
R6 (2)	TX (Jul 6)
R7	
R8	MT (Jul 6)
R9 (1)	CA (Jan 8)
R9 (2)	
R10	2

REGIONAL BREAKDOWN				
	JFO	DR	EM	JRO
R1	1	2	0	0
R2	0	0	0	2
R3	2	7	1	0
R4	7	21	5	1
R5	0	2	0	0
R6	4	9	1	3
R7	1	18	0	0
R8	1	1	0	0
R9	1	3	0	0
R10	0	1	0	0



- FMAG
- FEMA HQ
- Regional Offices
- National IMAT
- Regional IMAT
- Joint Field Offices
- Joint Recovery Offices
- Direct Housing Mission
- Active RSF Missions
- Pre-Positioned Sites
- Federal Staging Area
- Incident Support Base
- Distribution Center
- Temporary Housing Storage Area/Site
- Incident Support Team
- Large Fires
- Staging Management Team
- State Activation
 - Full
 - Partial
 - Monitoring
 - Declared Countries

IM Workforce

12,072 (+3) Assigned
4,077 (-6) Unavailable
5,617 (-52) Deployed
20% (+1) / 2,378 (+61) Available

IM Cadre Availability

Alternative Dispute Resolution: 19% (6/31); Civil Rights: 7% (8/108); Disability Integration 15% (4/26); External Affairs: 11% (36/327); Environmental Planning and Historic Preservation: 9% (64/698); Field Leadership: 4% (5/122); Financial Management: 17% (32/189); Hazard Mitigation: 6% (50/809); Human Resources: 13% (21/166); Individual Assistance: 23% (565/2,407); Interagency Recovery Coordination: 24% (61/249); Information Technology: 18% (113/622); Logistics: 20% (306/1,545); Operations: 15% (56/365); Public Assistance: 12% (251/2,081); Planning: 6% (23/372); Safety: 4% (4/91); Security: 15% (17/113)

18 Cadres ≤ 25% Availability

MERS
≥ 66%

36 Assigned
6 Unavailable
2 Deployed

28 Available

US&R
≥ 66%

28 Assigned
1 Unavailable
0 Deployed

27 Available

FCO
≤ 1 Type I

39 Assigned
3 Unavailable
33 (-1) (20 FCOR) Deployed

3 (+1) Available

Joint Preliminary Damage Assessments

Region	State / Location	Incident	IA	Number of Counties		Start - End
			PA	Requested	Complete	
R5	IN	Severe Weather and Flooding Mar 30 - Apr 9	IA	14	2	8/14 - TBD
			PA	0	0	N/A
	WI	Severe Weather and Flooding Aug 10 - 12	IA	3 (+3)	0	8/19 - TBD
			PA	0	0	N/A
R7	KS	Severe Storms and Tornado Jul 17 - 22	IA	0	0	N/A
			PA	5	0	8/18 - TBD
	NE	Severe Thunderstorms Aug 8 - 10	IA	0	0	N/A
			PA	13	0	8/18 - TBD
R10	AK	Chevak Structure Fire Jul 8	IA	0	0	N/A
			PA	1	0	8/19 - TBD



FEMA

Declaration Requests in Process – 6

State / Tribe / Territory – Incident Description	Type	IA	PA	HM	Requested
CTM* – Severe Storms, Flooding, and Straight-line Winds	DR		X	X	Jul 17
ND – Severe Storms, Straight-line Winds, and Tornadoes	DR		X	X	Jul 21
NE – Severe Storms and Straight-line Winds	DR		X	X	Jul 24
NC – Tropical Depression Chantal	DR		X	X	Aug 5
KS – Severe Storms, Straight-line Winds, Tornadoes, and Flooding	DR		X	X	Aug 5
SWO** – Severe Storms and Flooding	DR	X	X	X	Aug 5

* Crow Tribe of Montana

** Sisseton-Wahpeton Oyate



FEMA

Declaration Amendments

Declaration	Number	Issued	Action
FEMA-3628-EM-NM	1	Aug 18	Closes the incident period effective Aug 5
FEMA-4870-DR-IA	1	Aug 1	Appoints Andrew P. Meyer as FCO
FEMA-4885-DR-MO	1	Jul 23	Appoints Constance C. Johnson-Cage as FCO
FEMA-4886-DR-NM	2	Aug 18	Closes the incident period effective Aug 5



FEMA



FEMA

Helping people before, during, and after disasters.



Scan to subscribe to this briefing.