

FEMA National Watch Center

Daily Operations Briefing

Monday, August 18, 2025

8:30 a.m. ET



FEMA

National Current Ops / Monitoring

New Significant Incidents / Ongoing Ops

- Hurricane Erin (CAT 4) – Puerto Rico (PR) / U.S. Virgin Islands (USVI) – FINAL

Hazard Monitoring

- Severe Thunderstorms – Central High Plains
- Excessive Rainfall / Flash Flooding – Upper Midwest
- Tropical Activity:
 - Atlantic:
 - Hurricane Erin (CAT 4)
 - Disturbance 1: Med (50%)
 - Western Pacific:
 - Invest 90W

Disaster Declaration Activity

- No new declaration activity

Event Monitoring

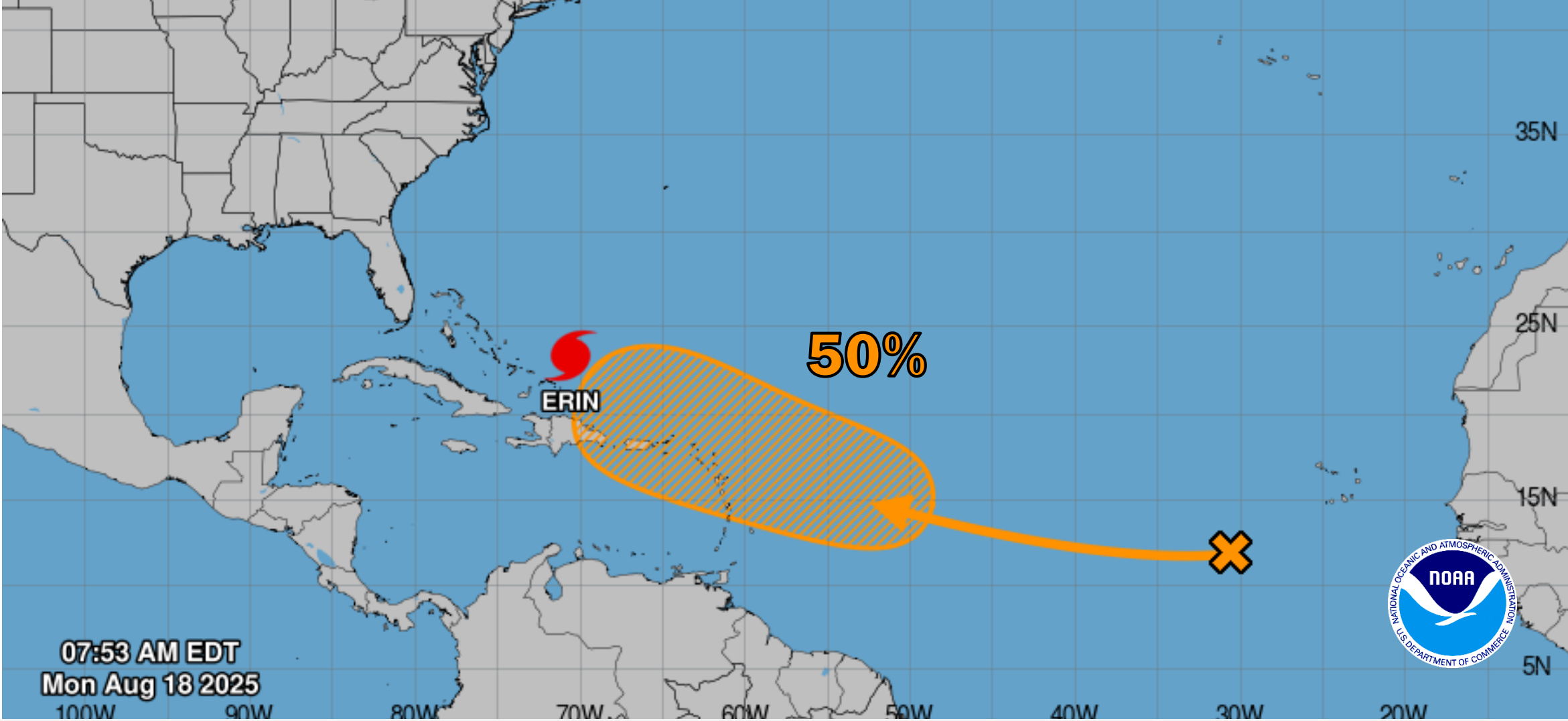
- No new significant events



FEMA

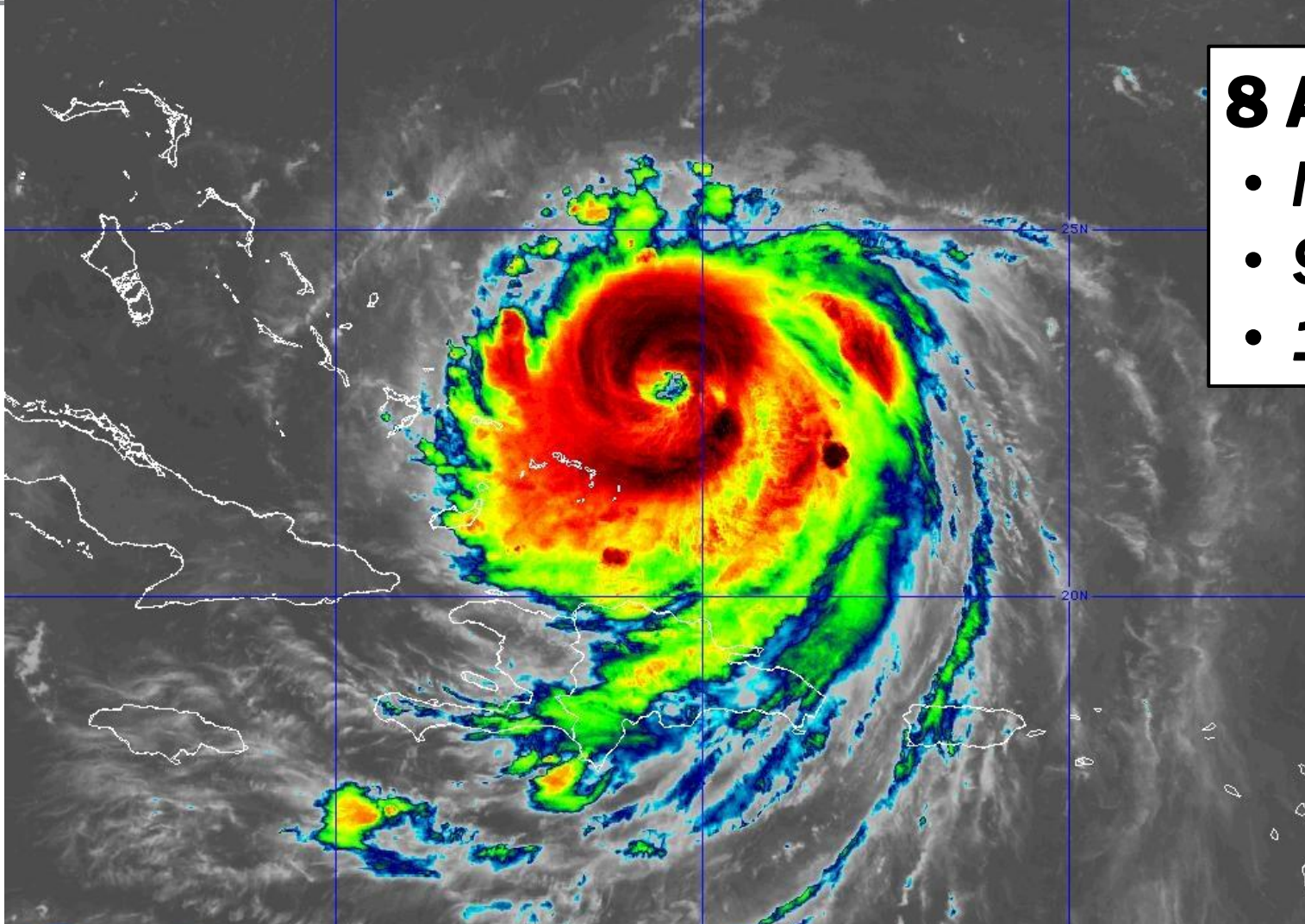
Atlantic Overview

TROPICAL OUTLOOK



Major Hurricane Erin

SATELLITE LOOP



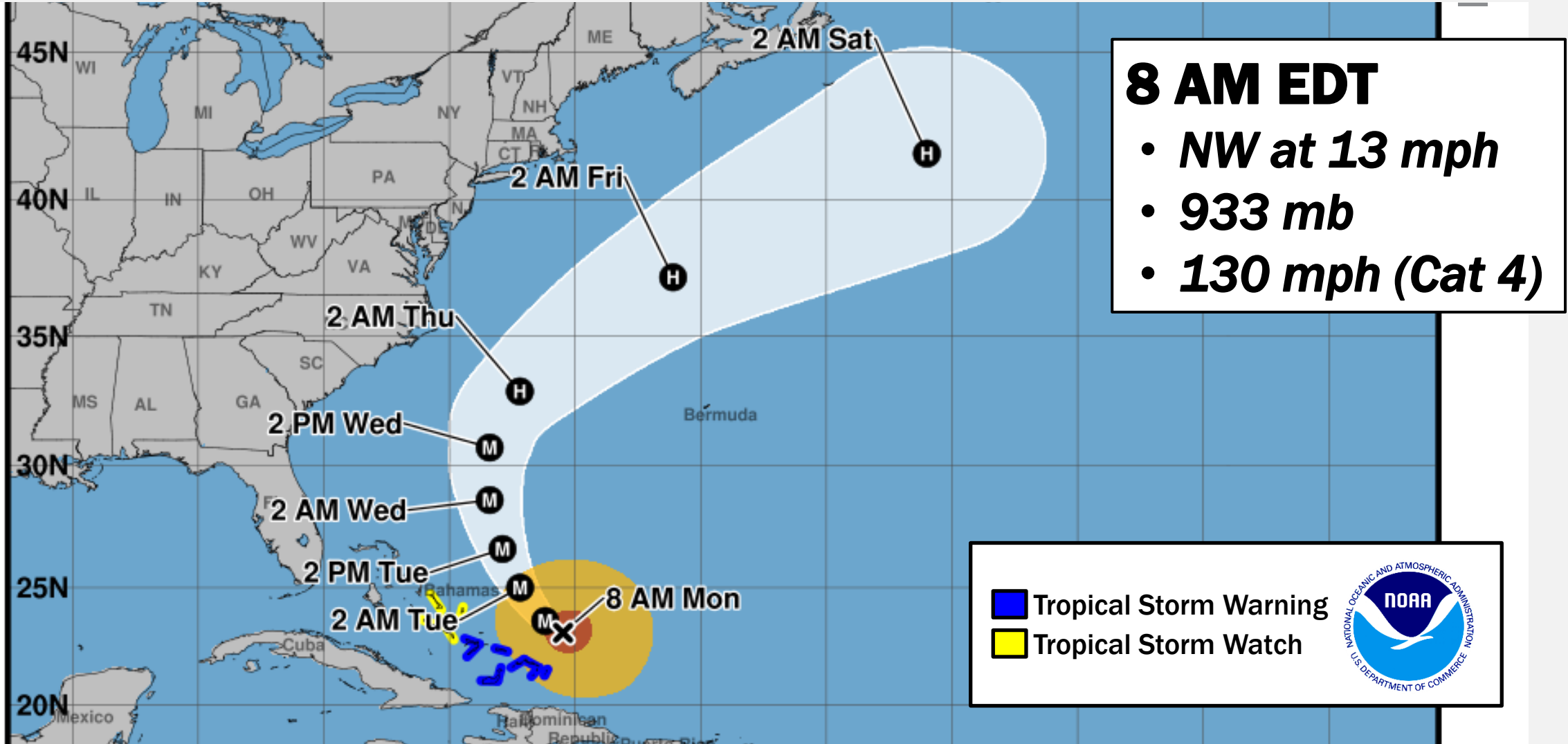
8 AM EDT

- ***NW at 13 mph***
- ***933 mb***
- ***130 mph (Cat 4)***



Major Hurricane Erin

FORECAST TRACK



8 AM EDT

- **NW at 13 mph**
- **933 mb**
- **130 mph (Cat 4)**

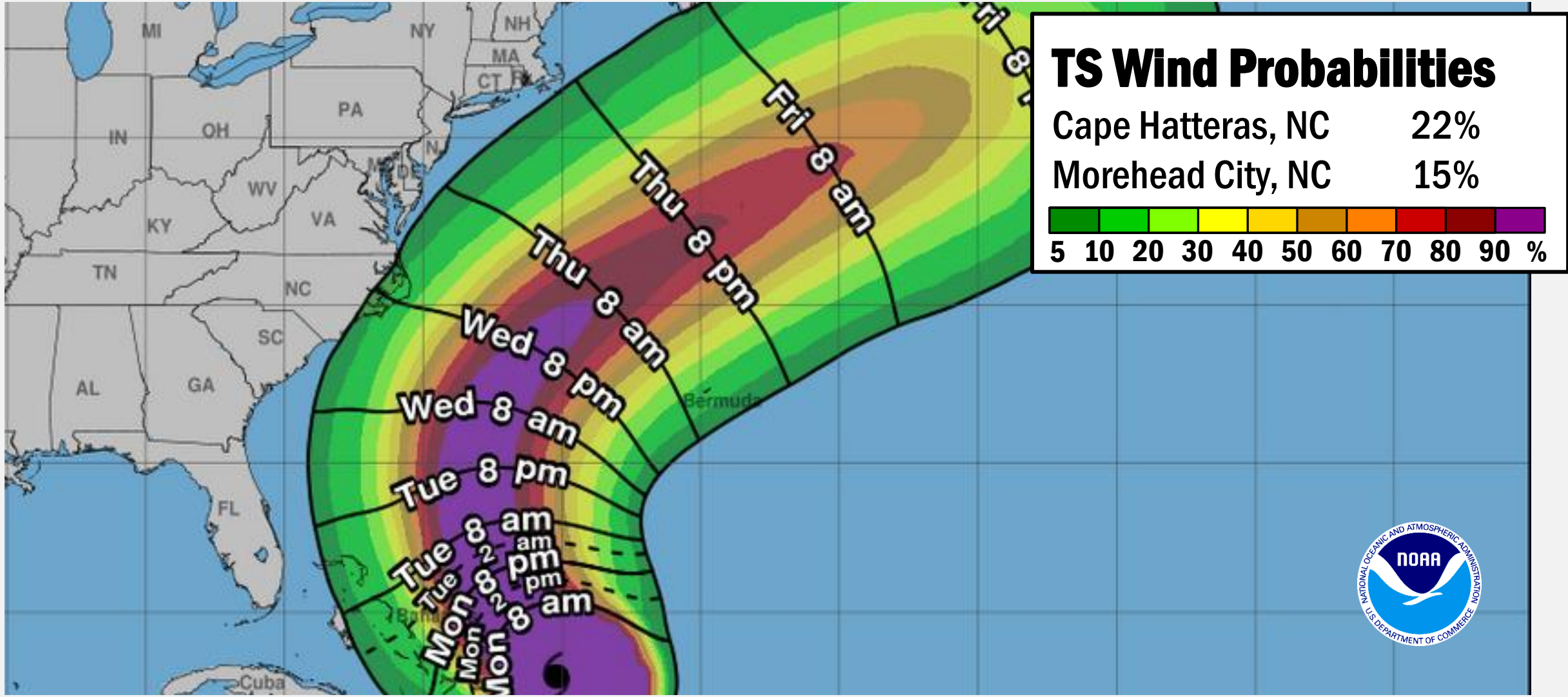
■ Tropical Storm Warning
■ Tropical Storm Watch



NATIONAL OCEANIC AND ATMOSPHERIC ADMINISTRATION
U.S. DEPARTMENT OF COMMERCE

Major Hurricane Erin

MOST LIKELY ARRIVAL OF WINDS



Central and East Pacific Overview

TROPICAL OUTLOOK





Hurricane Erin (CAT 4) – Puerto Rico / U.S. Virgin Islands - FINAL

Situation: Hurricane Erin is approximately 105 miles NE of Grand Turk Island, moving NW at 13 mph. Maximum sustained winds were recorded at 130 mph with higher gusts. A gradual turn to the north is expected on Monday and Tuesday. On the forecast track, the core of Erin is expected to pass east of the Bahamas on Monday, and between Bermuda and the East Coast of the US during the middle of the week. Some weakening is forecast to begin tonight; however, Erin will remain a large and dangerous major hurricane through the middle part of the week. Tropical storm conditions are expected today across the Turk and Caicos and southeast Bahamas however; there are no further impacts anticipated for the Virgin Island and Puerto Rico. (NHC, Advisory #28, as of 5:00 a.m. ET, Aug 18)

Lifeline Impacts: (R2 RLB AS 2:09 p.m. ET, Aug 17)

Energy: Minimal power outages reported.

USVI:

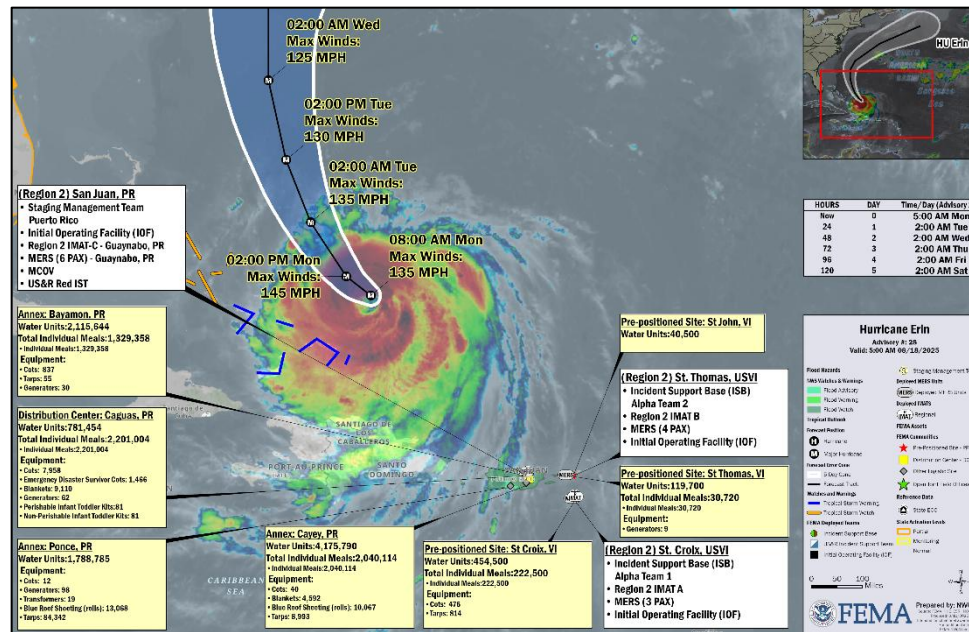
- US Army Corps of Engineers (USACE) 10 of 12 facility assessments complete
- PR: 75k (+25k) (5%) (+2) customers without power (*LUMA Energy, as of 8:00 a.m. ET*)
- USVI: 2k (4%) customers without power (*Eagle-I, as of 8:00 a.m. ET*)

Communications:

- Coral Bay, St. John – Bordeaux Mountain tower outage wireless service disruption
- Land Mobile Radio Networks: STT/STJ first responder radio network equipment failure has been mitigated by dropping channels until repairs are made

State / Local Response:

- PR EOC is Monitoring (TC Erin)
- USVI EOC at Normal Operations



The National Watch Center will continue to monitor in coordination with FEMA R2 and barring any significant developments, this will be the final report in this format.

FEMA / Federal Response: (R2 RLB AS 2:09 p.m. ET, Aug 17)

FEMA Region 2:

- RWC at Monitoring; RRCC at Level 3 (day shift only)
- R-IMAT is deployed to USVI

HQ:

- NWC is Monitoring 24/7; NRCC at Steady State

US&R:

- Red Incident Support Team (IST) Light Package is deployed to San Juan

MERS/DEC:

- Mobile Communications Office Vehicles pre-positioned in PR
- Maynard Mobile Emergency Response Support personnel are deployed to Guaynabo, PR, St. Thomas, and St. Croix

Logistics:

- 30 generators staged at **J.R. Loubriel Stadium Staging Site**, Bayamon, PR; SMT PR deployed to manage Generator Staging Base (GSB); 12 generators en route to St. Croix; 9 generators are staged in St. Thomas
- Incident Support Base (ISB) Alpha Teams deployed to USVI to accept generators (Team 1 in St. Croix; Team 2 in St. Thomas)

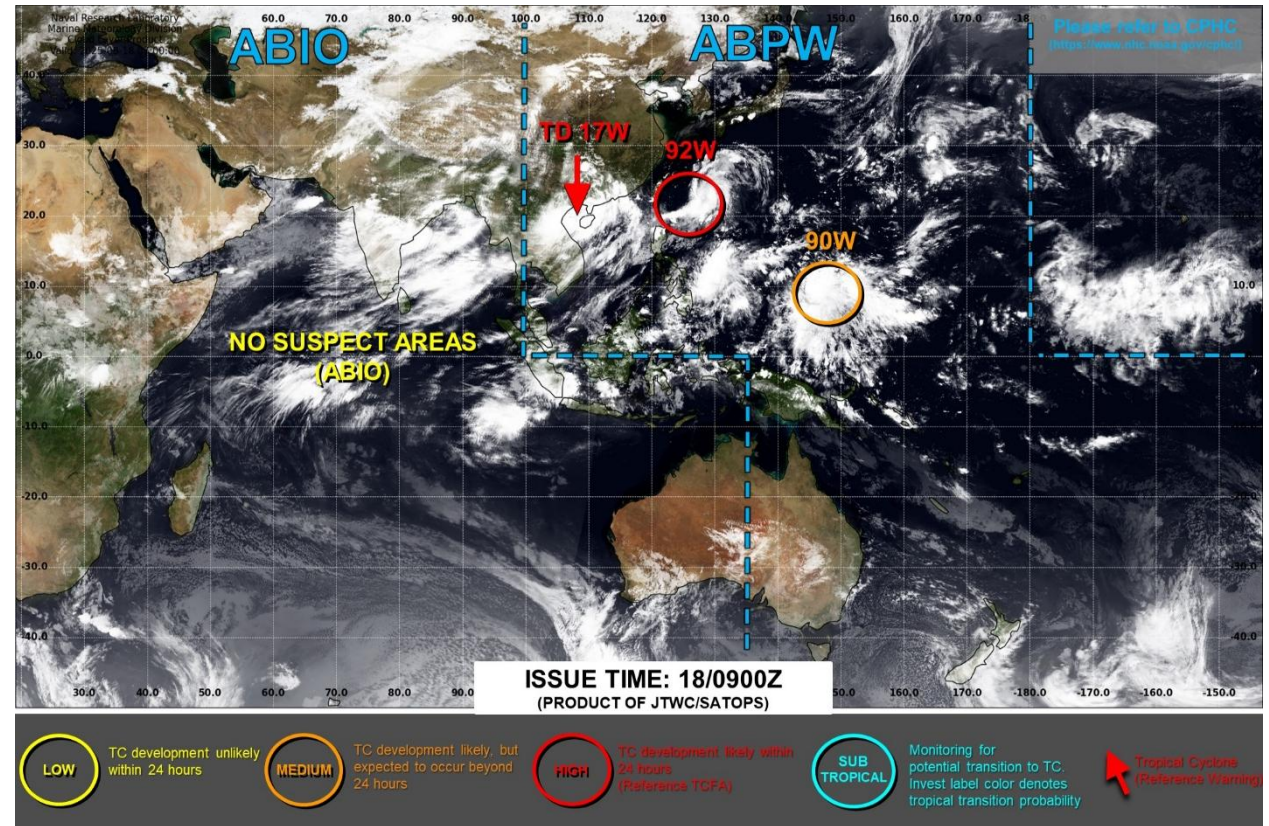


FEMA

Invest 90W – Western Pacific

Invest 90W: (as of 2:00 a.m. ET)

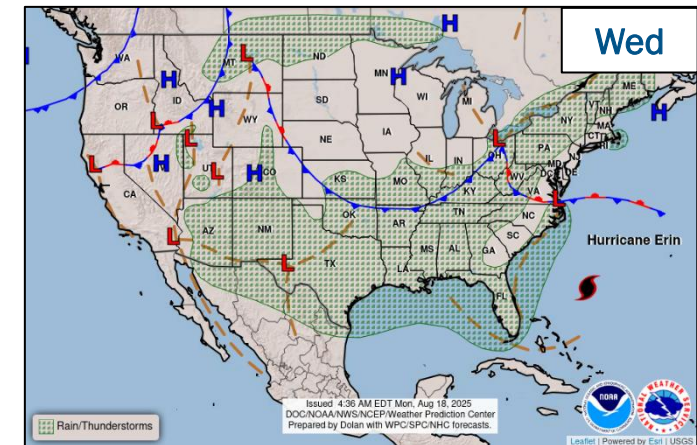
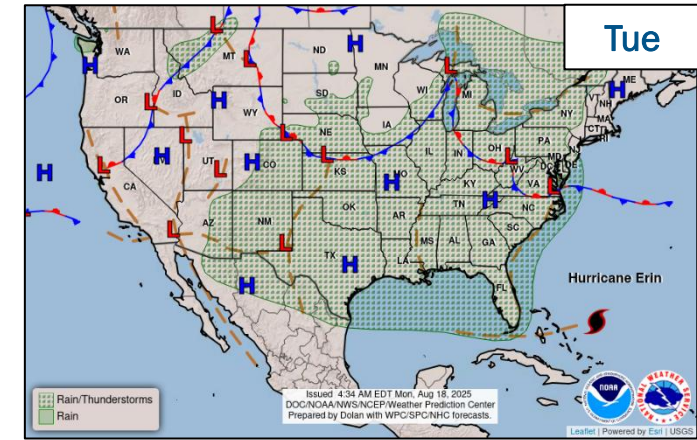
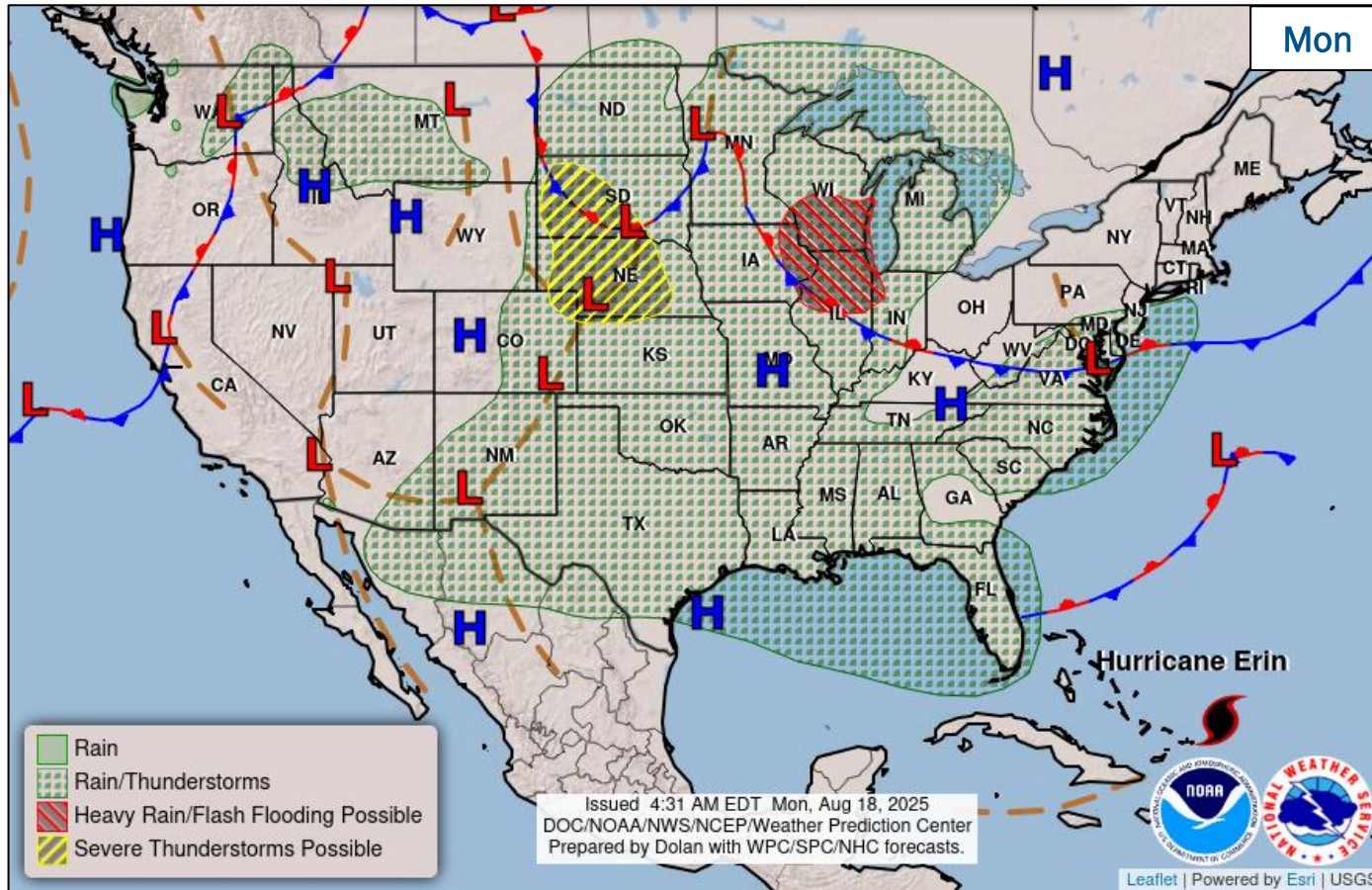
- Located 412 Miles SE of Anderson AFB, Guam
- Maximum sustained winds of 20-26 mph
- Environmental conditions are assessed to be moderately favorable
- Potential development of a significant tropical cyclone within 24hrs is medium



FEMA

National Watch Center

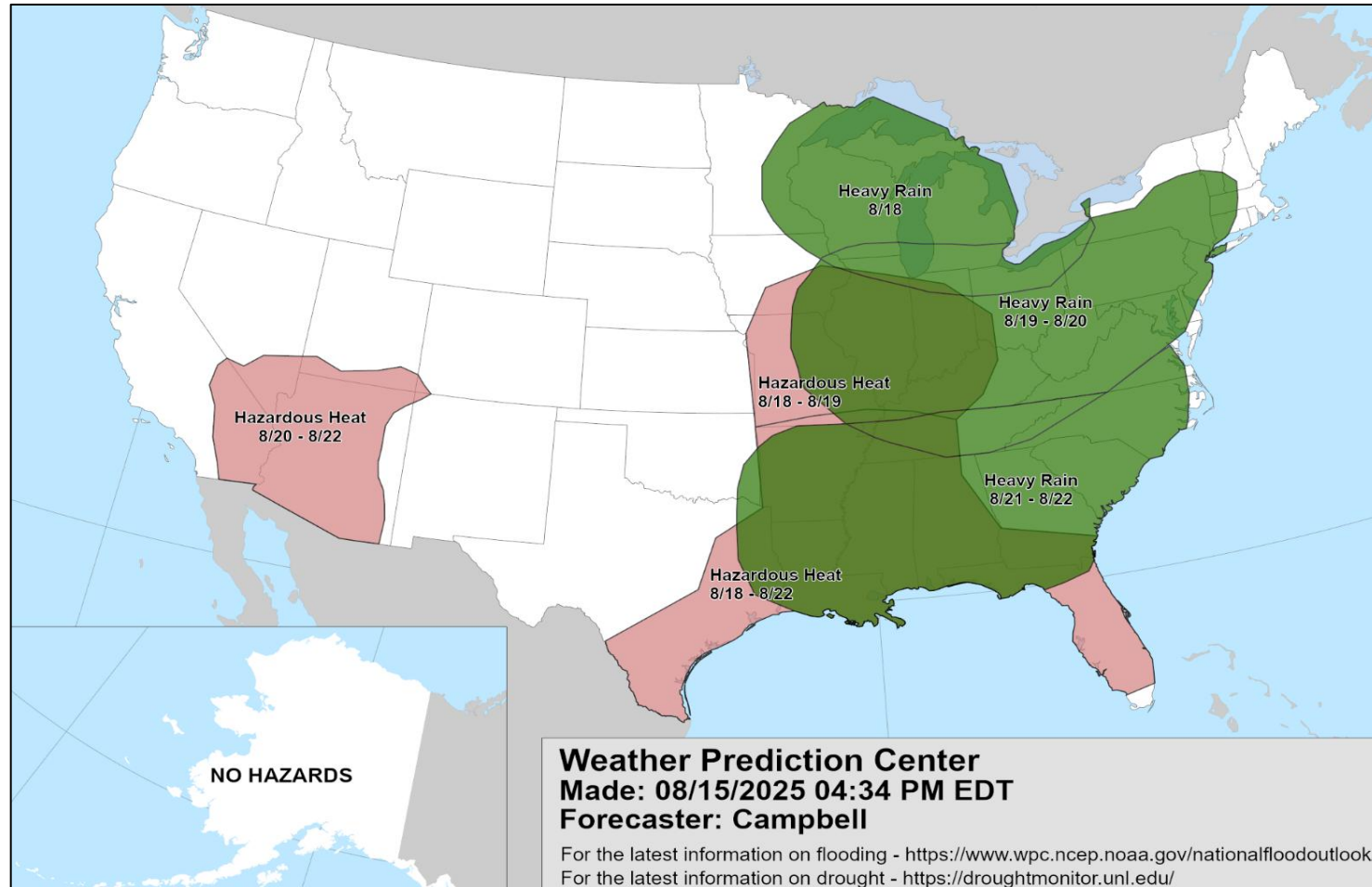
National Weather Forecast



FEMA

National Watch Center

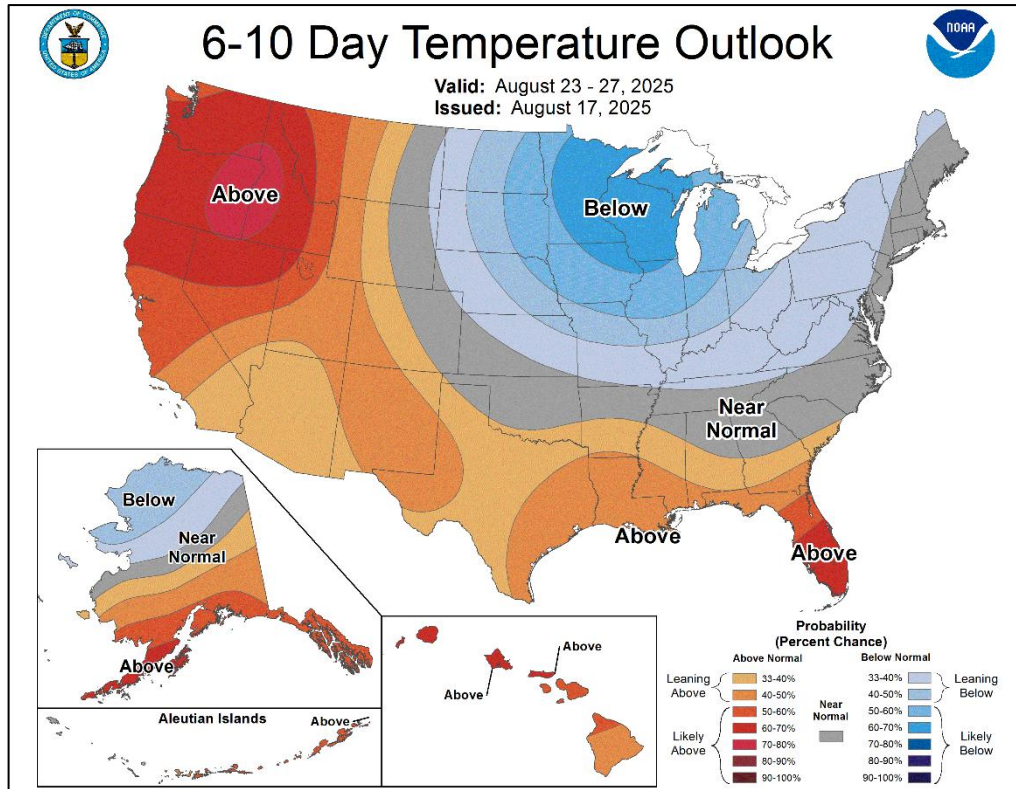
Hazards Outlook – Aug 18-22



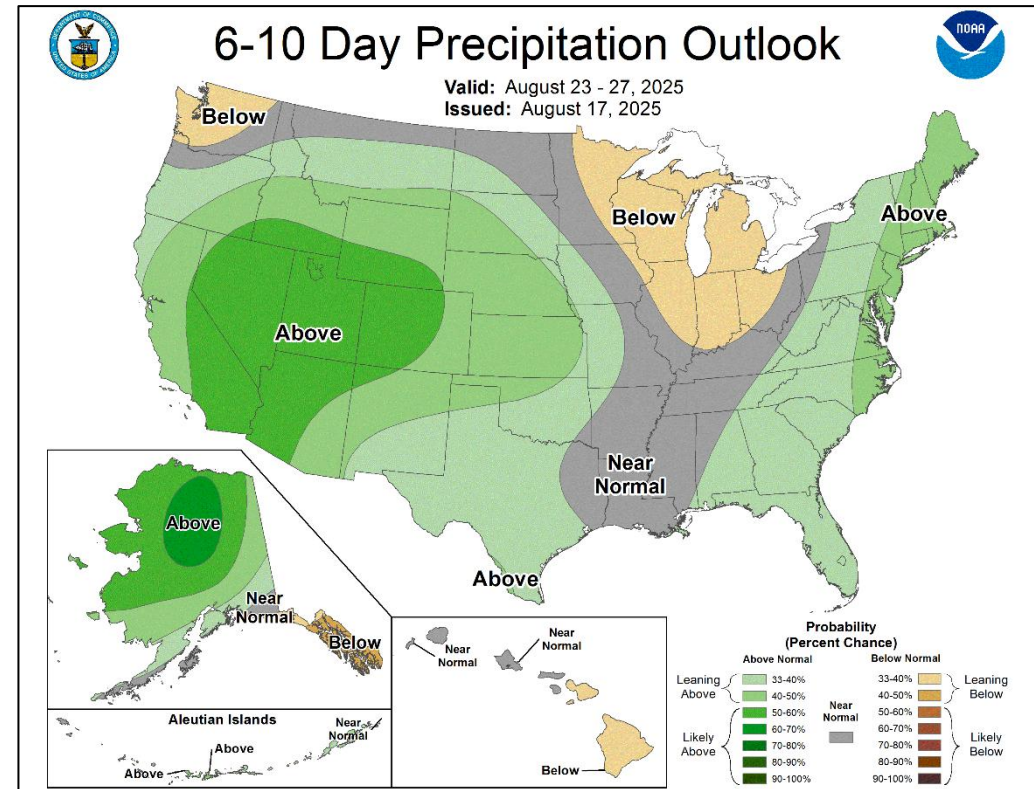
FEMA

National Watch Center

Long Range Outlooks – Aug 23-27



6-10 Day Temperature Probability



6-10 Day Precipitation Probability



FEMA

Wildfire Summary

Fire Name (County, ST)	FMAG #	Acres Burned	Percent Contained	Evacuations	Structures (Homes / Other)			Fatalities / Injuries
					Threatened	Damaged	Destroyed	
Monroe Canyon (Sevier/Piute, UT)	5600-FM-UT	73,655	75% (+12)	M: 220	H: 110	H: 0	H: 10	0 / 8
				V: 0	O: 102	O: 0	O: 4	
Lee (Rio Blanco, CO)	5603-FM-CO	137,465 (+12)	60% (+18)	M: 79	H: 2,428 (-84)	H: 0	H: 5	0 / 2
				V: 0	O: 77	O: 0	O: 16	
Sunset (Bonner, ID)	5607-FM-ID	3,199 (+447)	0%	M: 250	H: 0	H: 0	H: 6	0 / 0
				V: 0	O: 0	O: 0	O: 20	
Red Canyon (Hot Springs, WY)	5608-FM-WY	91,581 (+23,131)	0%	M: 7	H: 100	H: 0	H: 0	0 / 0
				V: 0	O: 200	O: 0	O: 0	

(Evacuations: M = Mandatory / V = Voluntary; Structures: H = Homes and Mixed Commercial/Residential / O = Non-residential Commercial/Other Minor Structures)



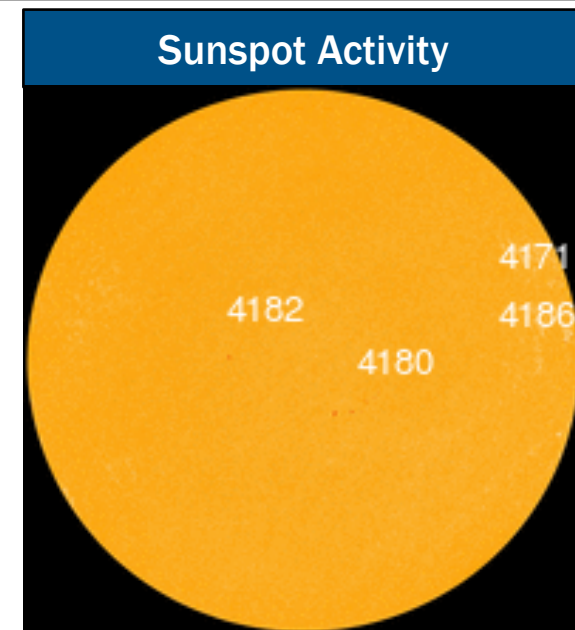
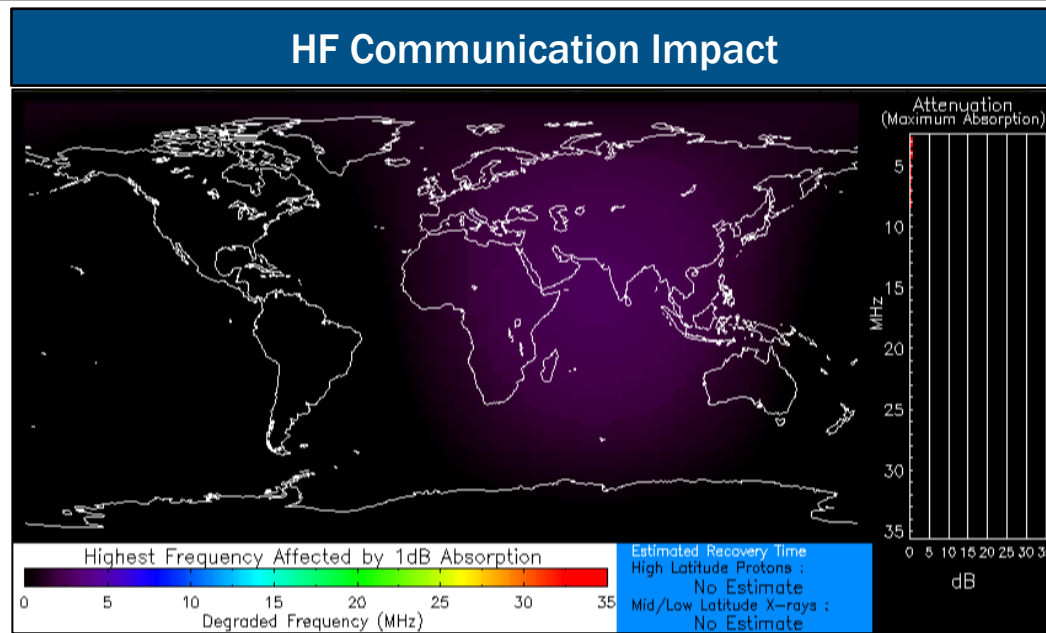
FEMA

National Watch Center

Space Weather Outlook

Minor	Space Weather Activity	Geomagnetic Storms	Solar Radiation	Radio Blackouts
Past 24 Hours	None	None	None	None
Next 24 Hours	None	None	None	None

For further information on NOAA Space Weather Scales refer to: <http://www.swpc.noaa.gov/noaa-scales-explanation>
 For further information on Sunspot Activity refer to: <https://www.swpc.noaa.gov/phenomena/sunspotsolar-cycle>



FEMA

FEMA Common Operating Picture

17 Joint Field Offices **Supporting** **64 + 7** Major Disasters Emergency Declarations **12** Direct Housing Missions **9** RSF-Supported Disasters **6** Joint Recovery Offices

Monday August 18, 2025 8:30 a.m. ET

FEMA HQ	
NWC	NRCC
Monitoring	Steady State
FEMA REGIONS	
Watch	RRCC
Monitoring	R1 Rostered
Monitoring	R2 Level 3
Monitoring	R3 Rostered
Monitoring	R4 Rostered
Monitoring	R5 Rostered
Monitoring	R6 Rostered
Monitoring	R7 Rostered
Monitoring	R8 Rostered
Monitoring	R9 Rostered
Monitoring	R10 Rostered

N-IMATs	
2-5 Teams Available	
Red	
White	
Blue	
Gold	
HS	

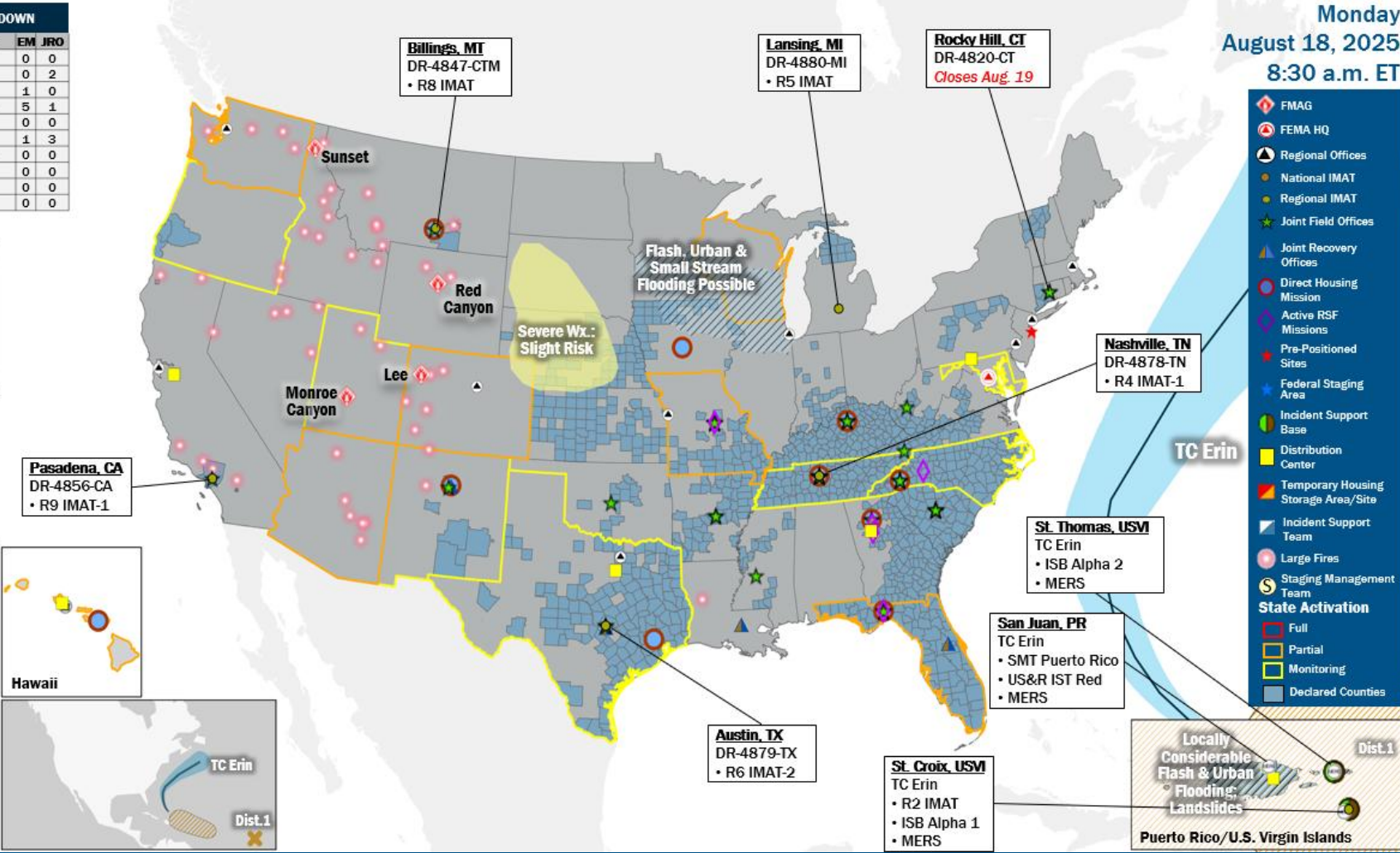
REGIONAL BREAKDOWN				
	JFO	DR	EM	JRO
R1	1	2	0	0
R2	0	0	0	2
R3	2	7	1	0
R4	7	21	5	1
R5	0	2	0	0
R6	4	9	1	3
R7	1	18	0	0
R8	1	1	0	0
R9	1	3	0	0
R10	0	1	0	0

R-IMATs	
≥ 7 Teams Available	
R1	1
R2	VI (Aug 12)
R3	2
R4 (1)	TN (Jun 23)
R4 (2)	
R5	MI (Jul 27)
R6 (1)	Reconstituting
R6 (2)	TX (Jul 6)
R7	3
R8	MT (Jul 6)
R9 (1)	CA (Jan 8)
R9 (2)	
R10	

Notes:
NRCC/RWCs/RRCCs:
 • R2 RRCC: TC Erin
 • R5 Watch: Staffing (Dayshift 7:00 a.m. to 7:00 p.m. ET)
State EOCs:
 • AZ/CO/HI/OR/UT/WA: Wildfires
 • MD/MD: Severe Weather
 • FL/TN: Previous Incidents
 • AK/MD/NM/TX/WI: Flooding
 • AS: Flooding/Landslides
 • NC: TC Erin

Volunteer Force	
Rostered 7,985	Deployed 3
Surge Capacity Force	
Rostered 8,037	Deployed 1

Fully Mission Capable (FMC)
 Partially Mission Capable (PMC)
 Not Mission Capable (NMC)
 Deployed



IM Workforce

12,069 Assigned
 4,083 (+12) Unavailable
 5,669 (-25) Deployed
 19% / 2,317 (+13) Available

IM Cadre Availability

18 Cadres ≤ 25% Availability
 Alternative Dispute Resolution: 16% (5/31); Civil Rights: 6% (7/108); Disability Integration 19% (5/26); External Affairs: 10% (32/327); Environmental Planning and Historic Preservation: 9% (63/698); Field Leadership: 6% (7/122); Financial Management: 17% (32/189); Hazard Mitigation: 6% (48/809); Human Resources: 1.1% (19/166); Individual Assistance: 22% (536/2,408); Interagency Recovery Coordination: 23% (58/247); Information Technology: 18% (112/622); Logistics: 20% (305/1,545); Operations: 16% (59/364); Public Assistance: 12% (242/2,081); Planning: 6% (22/372); Safety: 2% (2/91); Security: 13% (15/113)

MERS

≥ 66%
 36 Assigned
 6 Unavailable
 2 Deployed
 28 Available

US&R

≥ 66%
 28 Assigned
 1 Unavailable
 0 Deployed
 27 Available

FCO

≤ 1 Type I
 39 Assigned
 3 Unavailable
 34 (20 FCOR) Deployed
 2 Available

Joint Preliminary Damage Assessments

Region	State / Location	Incident	IA	Number of Counties		Start - End
			PA	Requested	Complete	
R5	IN	Severe Weather and Flooding Mar 30 - Apr 9	IA	14	2	Aug 14 - TBD
			PA	0	0	N/A
	WI	Severe Weather and Flooding Aug 10 - 12	IA	N/A	N/A	TBD
			PA	N/A	N/A	TBD
R7	KS	Severe Storms and Tornado Jul 17 - 22	IA	0	0	N/A
			PA	5	0	TBD - TBD
	NE	Severe Thunderstorms Aug 8 - 10	IA	0	0	N/A
			PA	13	0	Aug 18 - TBD
R10	AK	Chevak Structure Fire Jul 8	IA	0	0	N/A
			PA	1	0	Aug 19 - TBD



FEMA

Declaration Requests in Process – 6

State / Tribe / Territory – Incident Description	Type	IA	PA	HM	Requested
CTM* – Severe Storms, Flooding, and Straight-line Winds	DR		X	X	Jul 17
ND – Severe Storms, Straight-line Winds, and Tornadoes	DR		X	X	Jul 21
NE – Severe Storms and Straight-line Winds	DR		X	X	Jul 24
NC – Tropical Depression Chantal	DR		X	X	Aug 5
KS – Severe Storms, Straight-line Winds, Tornadoes, and Flooding	DR		X	X	Aug 5
SWO** – Severe Storms and Flooding	DR	X	X	X	Aug 5

* Crow Tribe of Montana

** Sisseton-Wahpeton Oyate



FEMA



FEMA

Helping people before, during, and after disasters.



Scan to subscribe to this briefing.