

FEMA National Watch Center

# Daily Operations Briefing

Tuesday, August 12, 2025

8:30 a.m. ET



**FEMA**

# National Current Ops / Monitoring

---

## New Significant Incidents / Ongoing Ops

- Glacier Lake Outburst Flood (GLOF) Threat – Juneau, AK

## Hazard Monitoring

- Excessive Rainfall / Flash Flooding – Southeast
- Excessive Heat – Pacific Northwest, Great Basin, and the Southwest
- Atlantic:
  - Tropical Storm Erin
  - Disturbance 1: Low (10%)
  - Disturbance 2: Low (near 0%)
- Central Pacific: Hurricane Henriette (CAT 1)

## Disaster Declaration Activity

- 3 amendments issued
- FMAG Approval: Oak Fire – CO

## Event Monitoring

- No new significant events



**FEMA**

# Glacier Lake Outburst Flood (GLOF) Threat – Juneau, AK

**Situation:** As of 1:40 a.m. ET on Aug 12, the Suicide Basin located near Juneau, AK (pop. 32k) had attained full capacity, with observed overtopping of the ice dam. Although no release from the basin has yet been detected, a sub-glacier release could occur, which may initiate an outburst flooding event that could affect Mendenhall Lake and the adjacent regions.

Annual flooding has occurred in this area since 2011; however, it has progressively worsened each year– with the flood of 2024 being the most destructive, impacting almost 300 homes in the Mendenhall Valley (the most heavily populated area of Juneau) resulting in a major disaster declaration. This year, local authorities installed USACE-provided HESCO barriers to divert the flood water away from the most heavily populated areas. Current forecast scenario crest is approximately 16.4 feet, below the 18-foot protections provided by the barriers. (See graphic below)

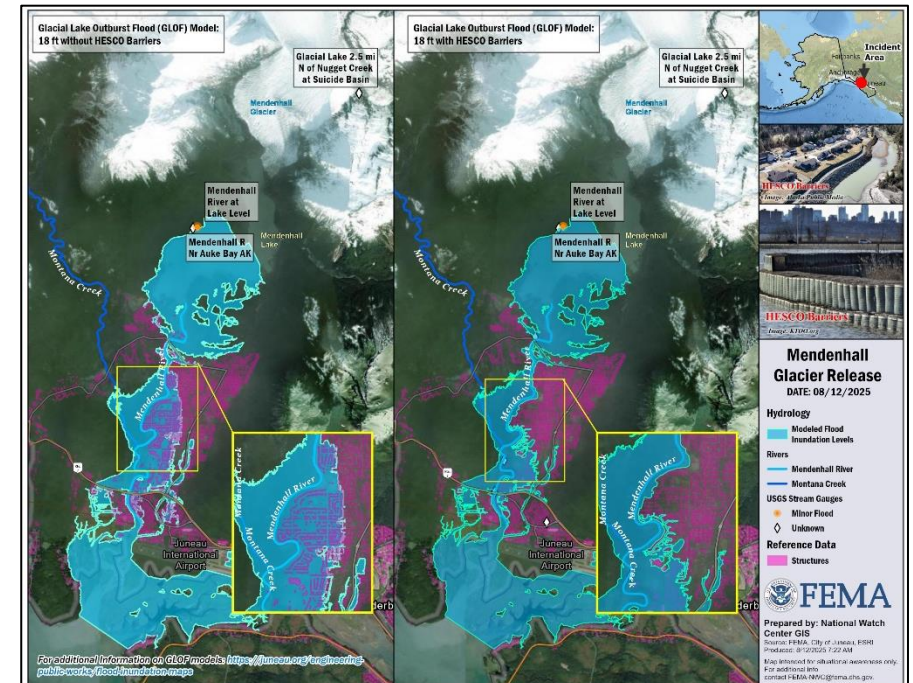
*(FEMA Region X and NWS Juneau, as of 1:40 a.m. ET)*

## State / Local Response: *(FEMA Region X SPOTREP, as of 6:07 a.m. ET)*

- AK SEOC is at Monitoring (GLOF); w/SEOC personnel deployed to Juneau to integrate with Borough of Juneau and Tlingit & Haida Indian Tribes of Alaska
- Governor declared an emergency declaration August 9, 2025
- The City & Borough of Juneau installed USACE-provided HESCO barriers to mitigate impacts

## FEMA / Federal Response: *(FEMA Region X OPORD, as of 7:18 p.m. ET)*

- FEMA Region X is at Monitoring; RRCC is Rostered
- FEMA Region X IMAT deploying to Anchorage, AK to arrive Aug 13
- Staging Management Team (SMT) Lead (Bothell) deploying to AK SEOC to arrive Aug 15
- FEMA Region X Alaska Area Office is coordinating with Alaska DHS&EM
- FEMA Region X deployed four Tribal LNO's (2 x Juneau, AK and 2 x AK SEOC)
- FEMA NWC is at Monitoring, 24/7



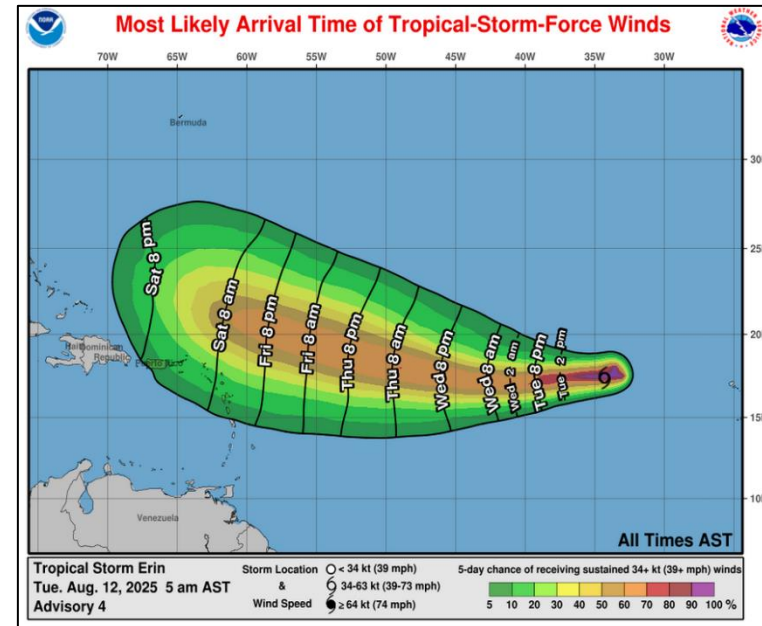
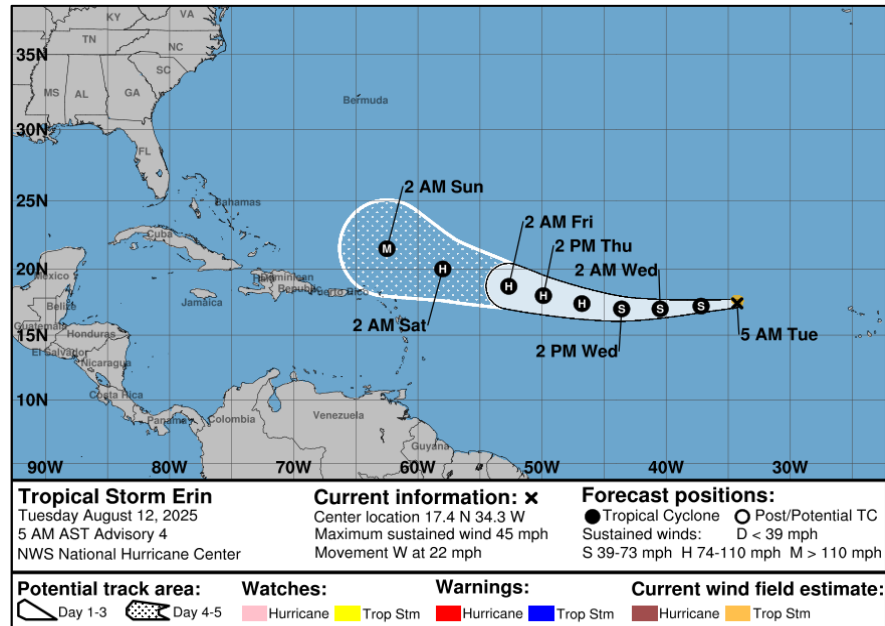
The NWC will continue to monitor in coordination with FEMA Region X, with continued reporting twice daily in the FEMA National Situation Report (5:00 p.m. / 3:00 a.m. ET) and the FEMA Daily Operations Briefing (8:30 a.m. ET).



# FEMA

National Watch Center

# Tropical Storm Erin – Atlantic



**Situation:** (Advisory #4, as of 5:00 a.m. ET)

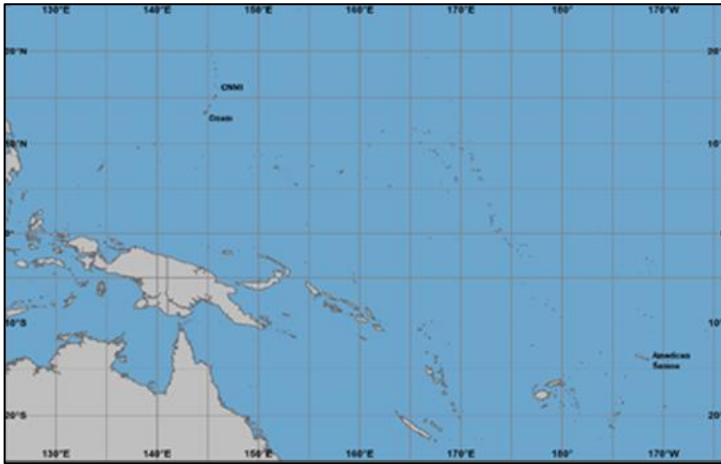
- Located 690 miles W of the Cabo Verde Islands
- Moving W at 22 mph
- Maximum sustained winds 45 mph
- Tropical-storm-force winds extend outward up to 45 miles from the center
- Erin is expected to become a hurricane in the next couple of days



FEMA

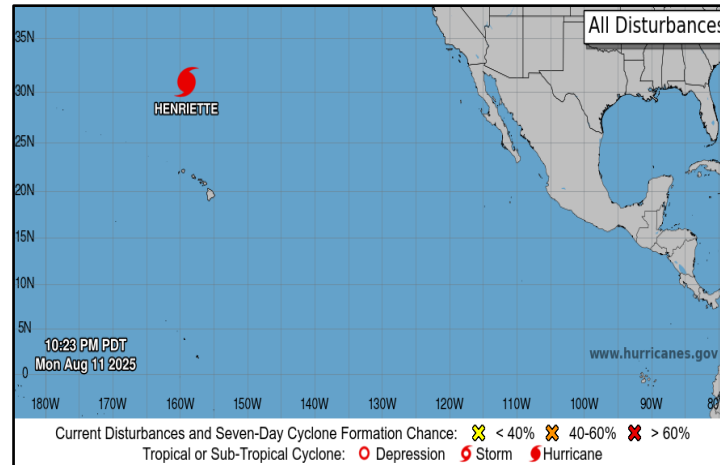
# Tropical Outlook

## Western Pacific



- No tropical cyclones threatening the U.S. territories

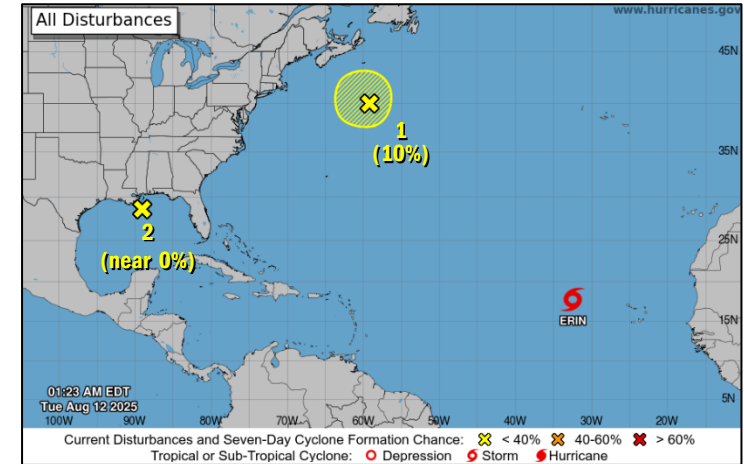
## Central and Eastern Pacific



### Hurricane Henriette (CAT 1): (Advisory #33, as of 5:00 a.m. ET)

- Located 730 miles N of Honolulu, Hawaii
- Moving NW at 16 mph
- Maximum sustained winds near 75 mph with higher gusts
- Hurricane Force Winds extend up to 15 miles from the center and tropical-storm-force winds extend outward up to 70 miles
- Henriette will pass well to the north of the Hawaiian Islands
- Further weakening is forecast during the next few days, and Henriette is expected to become a post-tropical cyclone by early Thursday

## Atlantic



### Tropical Storm Erin: (Advisory #4 as of 5:00 a.m. ET)

- See previous slide
- Located a few hundred miles south-east of Nova Scotia, Canada
- Limited tropical or subtropical development is possible over the next day or so
- Formation chance – 48-hour: Low (10%); 7-day: Low (10%)

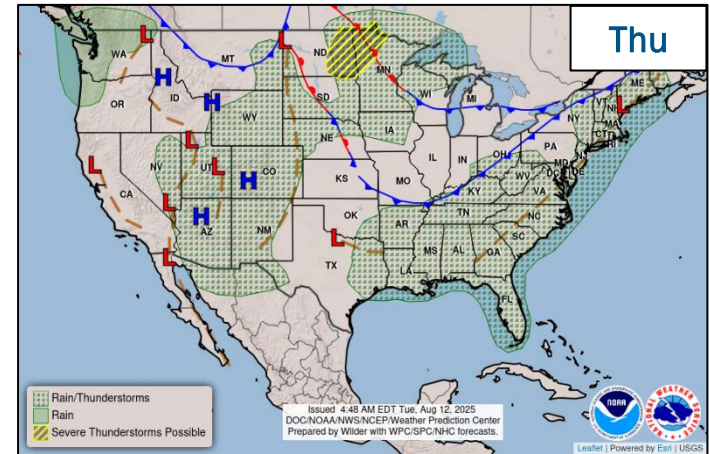
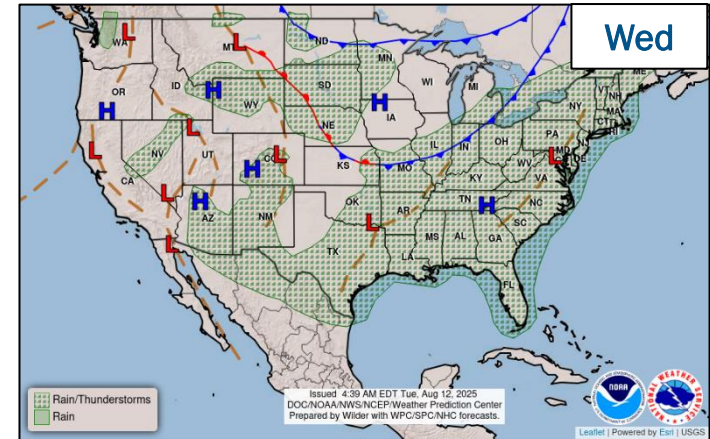
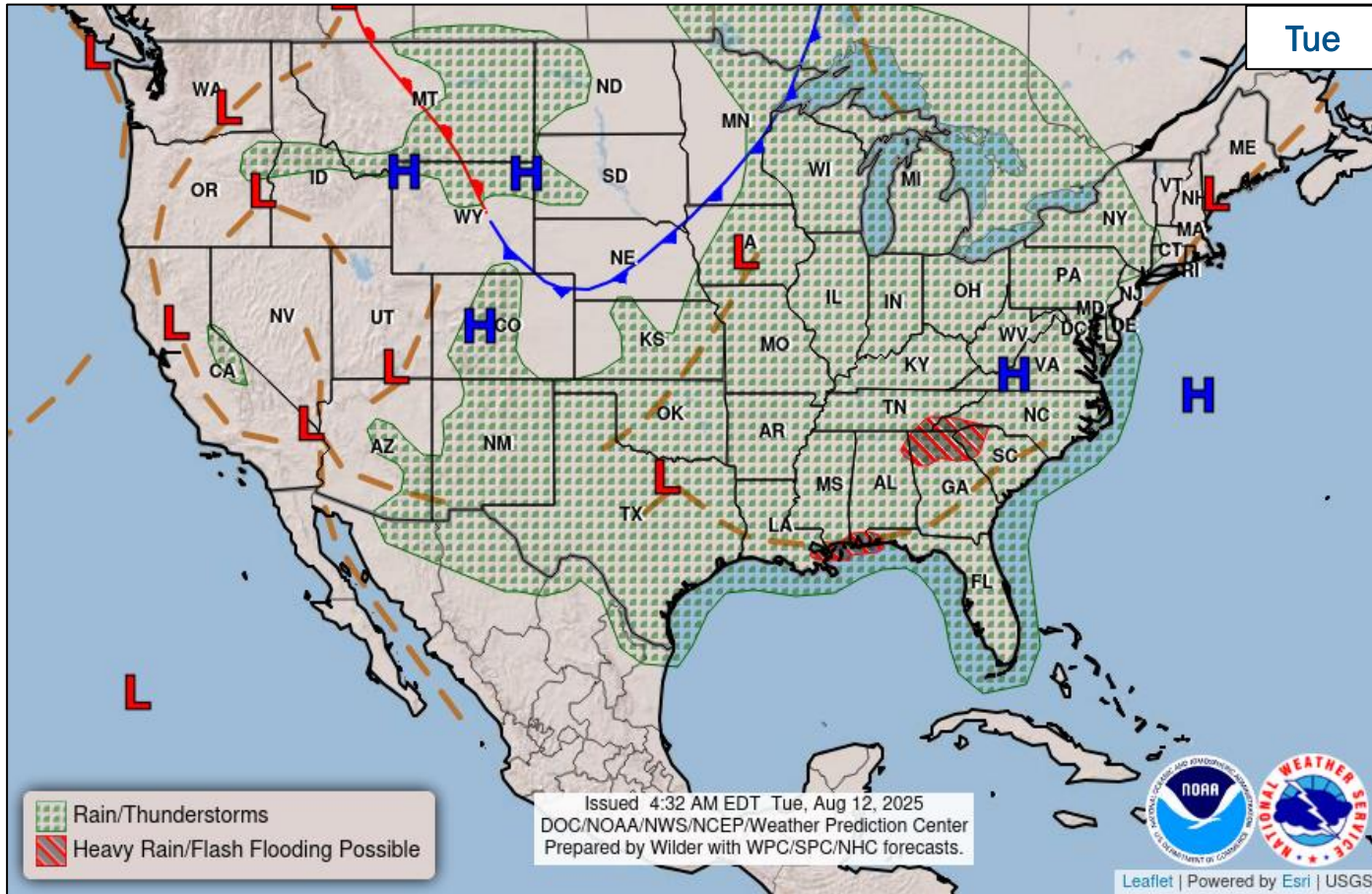
### Disturbance 2: (as of 8:00 a.m. ET)

- Located in the north-central Gulf
- Development of this system is not anticipated before it moves inland later today
- Locally heavy rainfall could produce flash flooding across portions of the Southeast over the next day or so
- Formation chance – 48-hour: Low (near 0%); 7-day: Low (near 0%)



FEMA

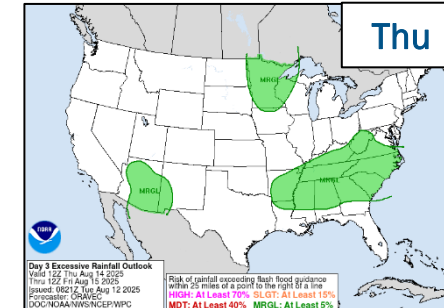
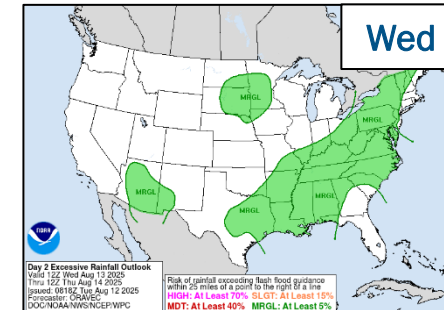
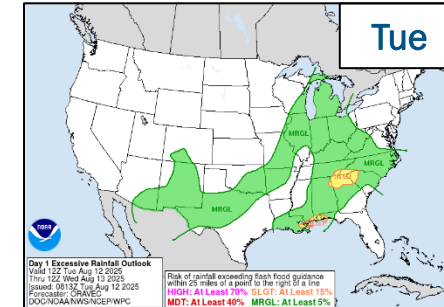
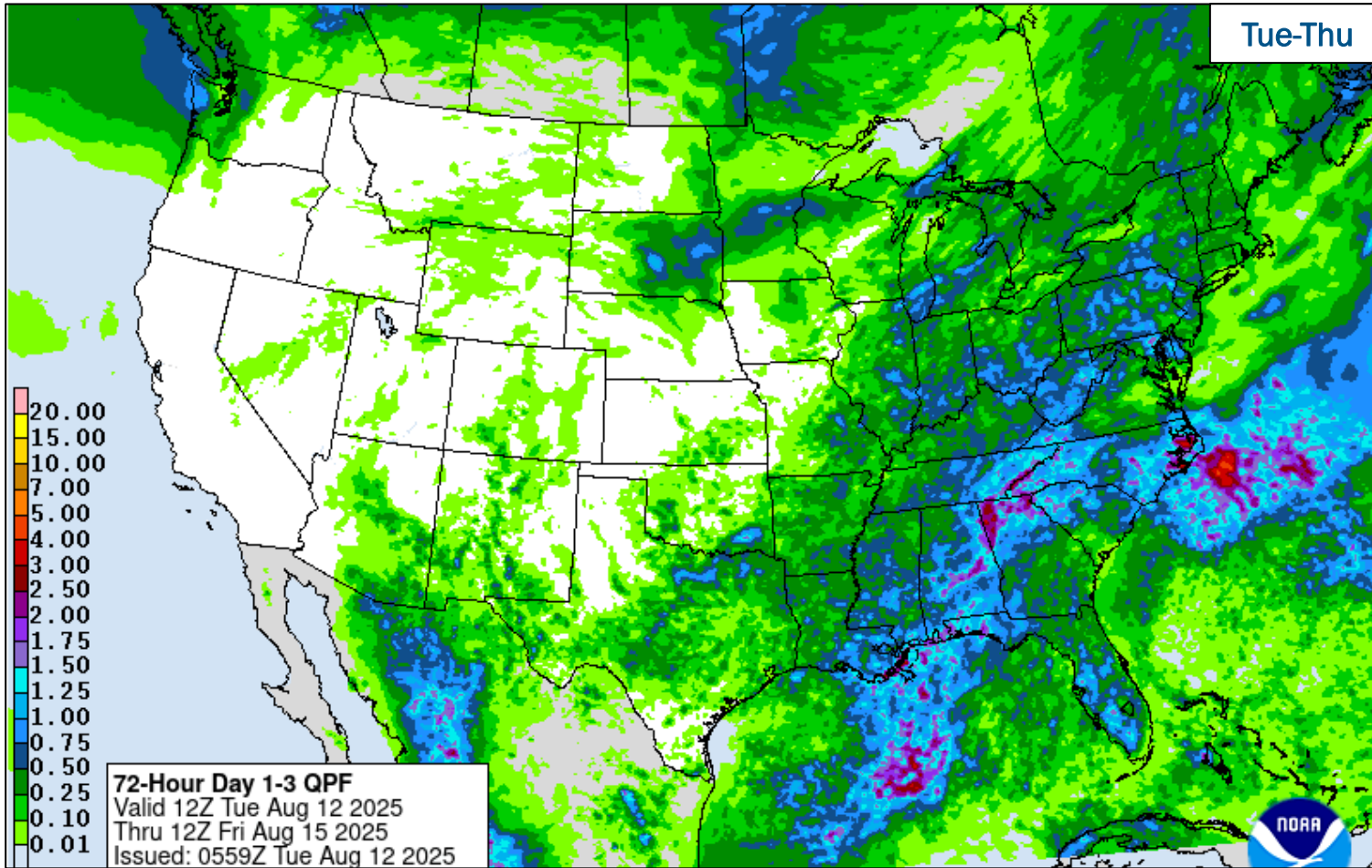
# National Weather Forecast



FEMA

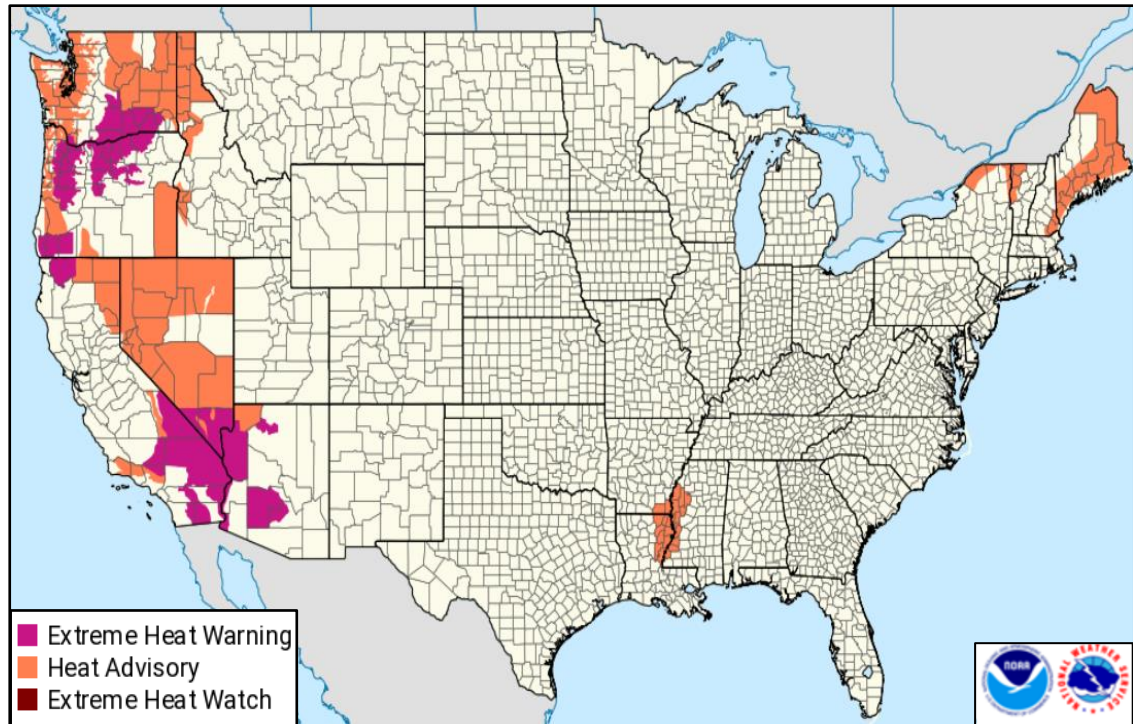
National Watch Center

# Precipitation & Excessive Rainfall

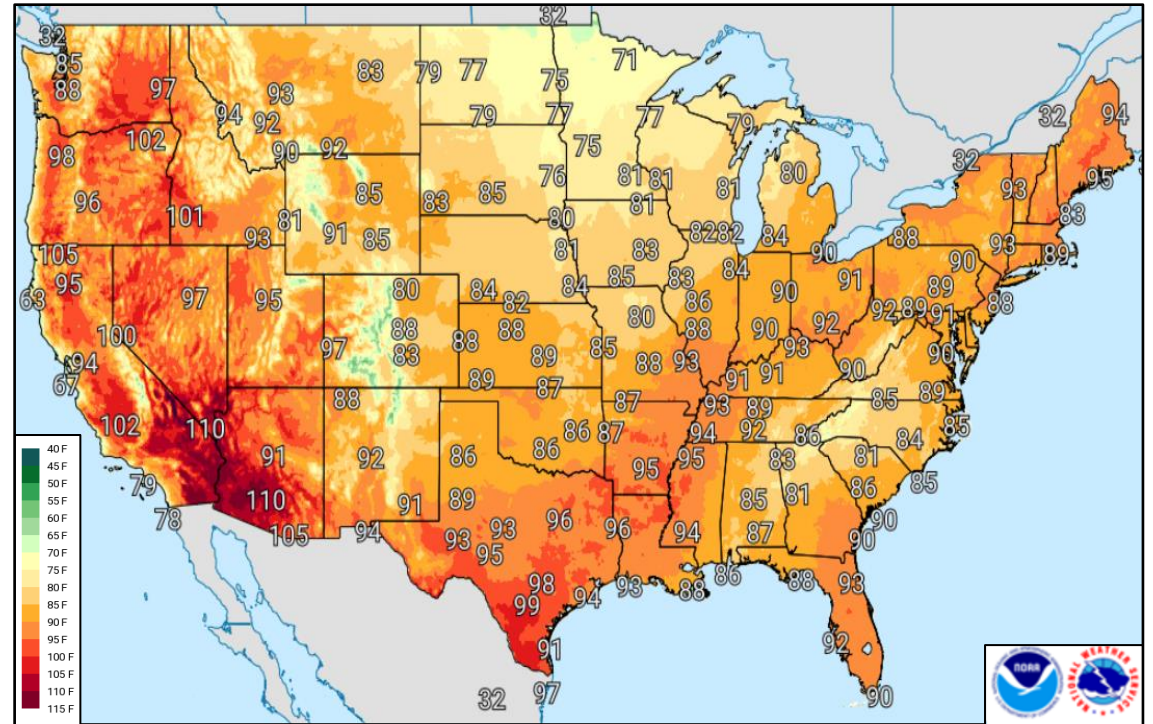


FEMA

# Excessive Heat – Aug 12



Watches & Warnings



High Temperature Forecast



FEMA

# Oak Fire – Colorado

Fire Name (County, ST)	FMAG #	Acres Burned	Percent Contained	Evacuations	Structures (Homes / Other)			Fatalities / Injuries
					Threatened	Damaged	Destroyed	
Oak (Archuleta, CO)	5606-FM-CO	150	0%	M: 717	H: 2,000	H: 0	H: 0	0 / 0
				V: 0	O: 5,186	O: 0	O: 0	

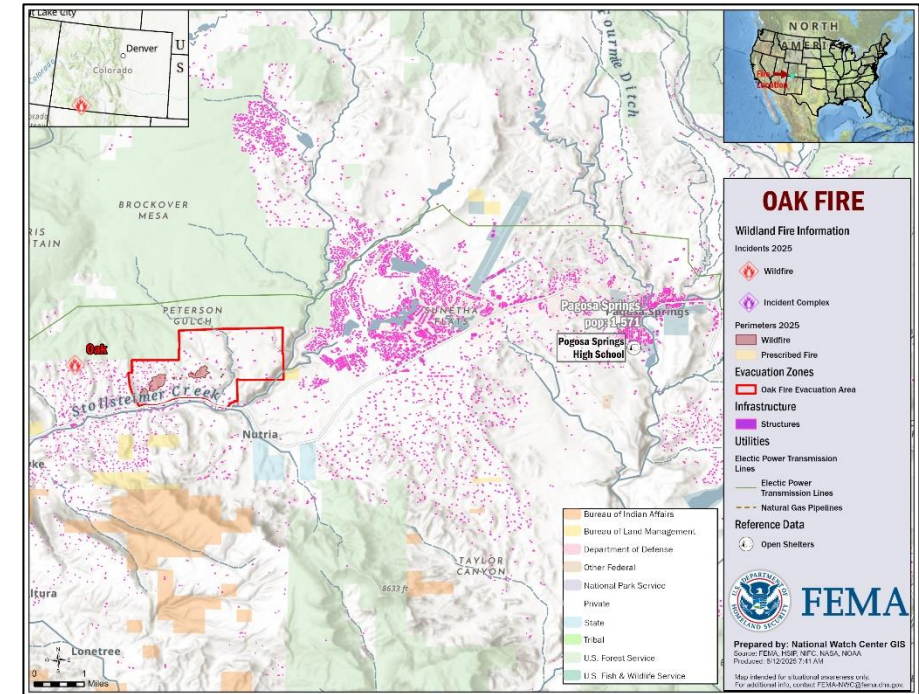
**Situation:** The Acting FEMA Region VIII Regional Administrator approved a Fire Management Assistance Grant (FMAG) for the Oak Fire, which has burned 150 acres with 0% containment. The fire is burning on private and state land in and around Pagosa Springs, CO (pop. 1.7k).

## State / Local Response:

- CO SEOC at Partial Activation (Wildfire)

## FEMA / Federal Response:

- FEMA Region VIII/Denver MOC is at Enhanced Watch (Wildfires); RRCC is Rostered; R-IMAT is deployed (DR-4847)
- FEMA NWC is Monitoring; NRCC is at Steady State (Blue Team Rostered)



FEMA

# Wildfire Summary

Fire Name (County, ST)	FMAG #	Acres Burned	Percent Contained	Evacuations	Structures (Homes / Other)			Fatalities / Injuries
					Threatened	Damaged	Destroyed	
Monroe Canyon (Sevier/Piute, UT)	5600-FM-UT	71,856 (-95)	36%	M: 220	H: 110	H: 0	H: 10	0 / 8
				V: 0	O: 102	O: 0	O: 4	
Lee (Rio Blanco, CO)	5603-FM-CO	116,859 (+3,481)	6% (-1)	M: 884	H: 2,600	H: 0	H: 3	0 / 0
				V: 0	O: 120	O: 0	O: 10	
Elk (Rio Blanco, CO)	5604-FM-CO	14,549 (-86)	30%	M: 0	H: 74	H: 0	H: 2	0 / 0
				V: 0	O: 13	O: 0	O: 5	

(Evacuations: M = Mandatory / V = Voluntary; Structures: H = Homes and Mixed Commercial/Residential / O = Non-residential Commercial/Other Minor Structures)



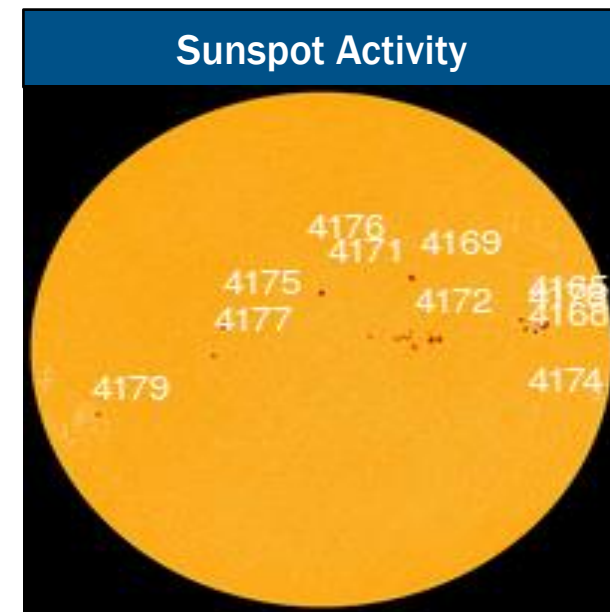
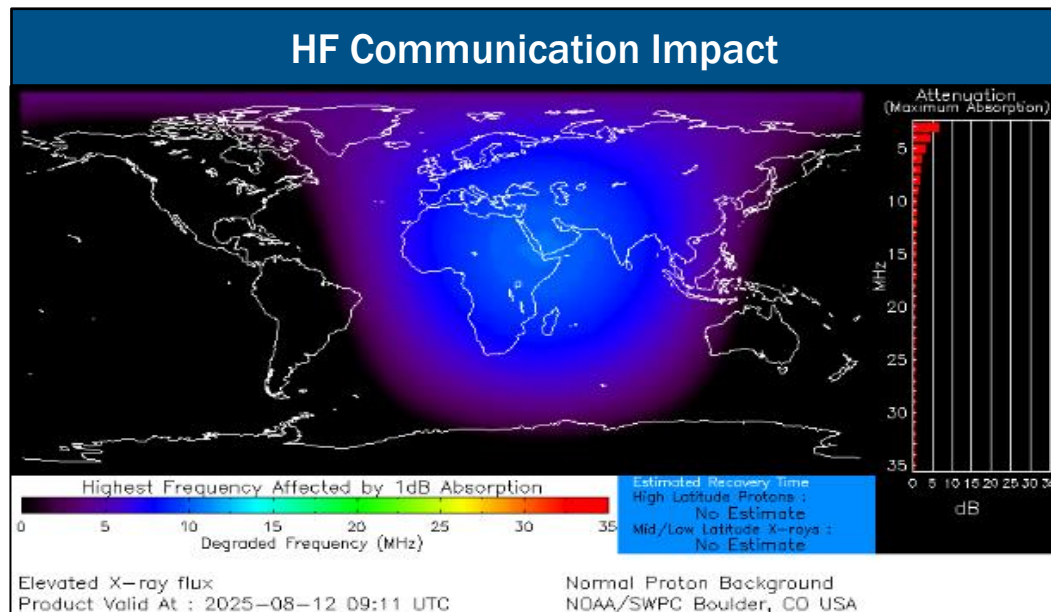
**FEMA**

National Watch Center

# Space Weather Outlook

Minor	Space Weather Activity	Geomagnetic Storms	Solar Radiation	Radio Blackouts
Past 24 Hours	Minor	None	None	R1
Next 24 Hours	Minor	None	None	R1

For further information on NOAA Space Weather Scales refer to: <http://www.swpc.noaa.gov/noaa-scales-explanation>  
 For further information on Sunspot Activity refer to: <https://www.swpc.noaa.gov/phenomena/sunspotsolar-cycle>



FEMA

# FEMA Common Operating Picture

**17** Joint Field Offices **Supporting** **64** Major Disasters **+** **7** Emergency Declarations **12** Direct Housing Missions **10** RSF-Supported Disasters **6** Joint Recovery Offices

Tuesday August 12, 2025 8:30 a.m. ET

FEMA HQ	
NWC	NRCC
Monitoring	Steady State
FEMA REGIONS	
Watch	RRCC
Monitoring I	Rostered
Monitoring II	Rostered
Monitoring III	Rostered
Monitoring IV	Rostered
Monitoring V	Rostered
Monitoring VI	Rostered
Enhanced VIII	Rostered
Monitoring IX	Rostered
Monitoring X	Rostered
Notes:	
NRCC/RWCs/RRCCs:	State EOCs:
• RV Watch: Staffing (Dayshift 7:00 a.m. to 7:00 p.m. ET)	• AZ/CO/HI/OR/UT/WA: Wildfires
• RVIII Watch/Denver MOC: Wildfires	• MD/MD: Severe Weather
	• FL/TN: Previous Incidents
	• AS/MD/NM/TX/WI/AK: Flooding
Volunteer Force	
Rostered 7,985	Deployed 3
Surge Capacity Force	
Rostered 8,069	Deployed 1

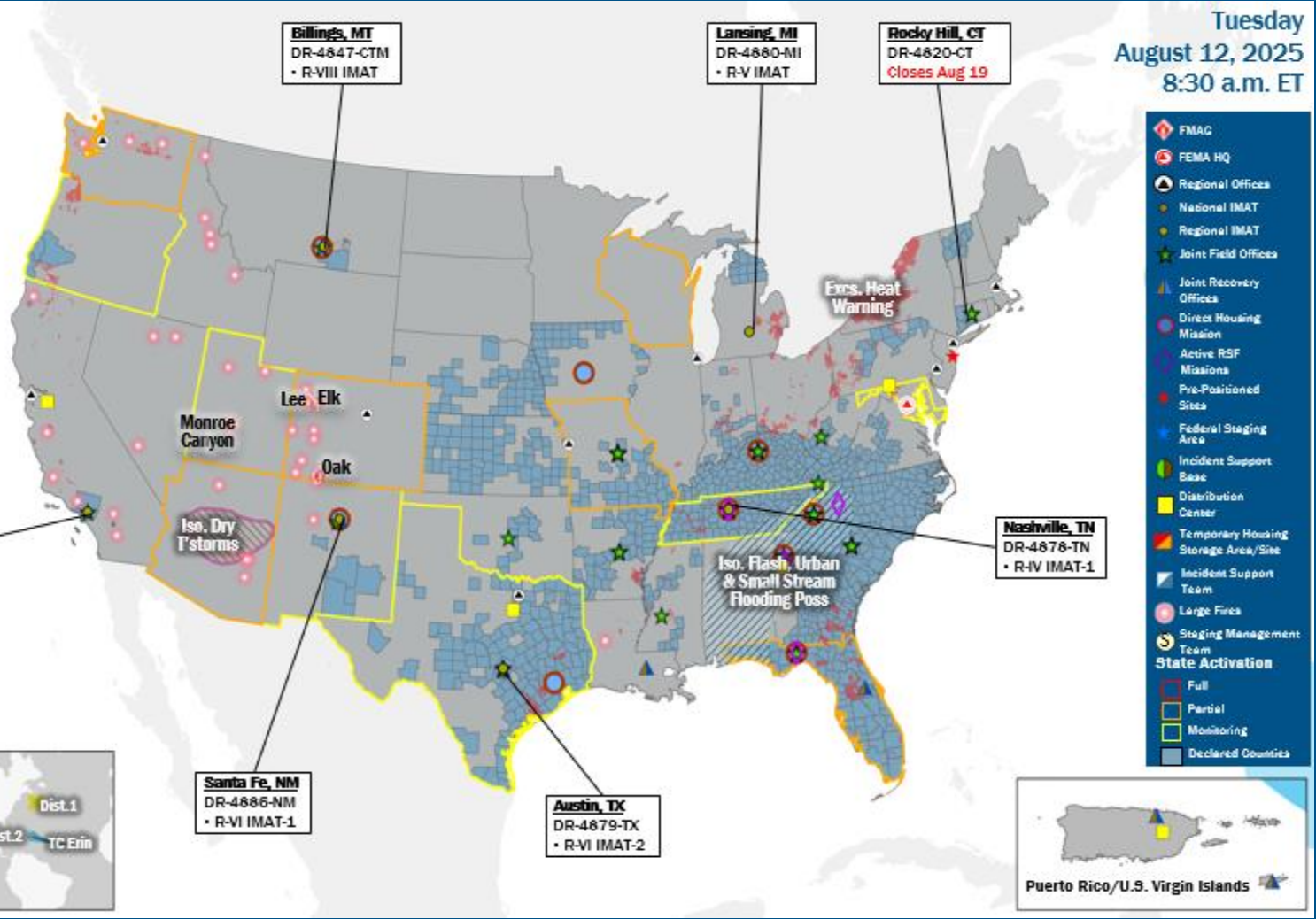
N-IMATs	
2-5 Teams Available	
Red	
White	
Blue	
Gold	
HS	
R-IMATs	
4-6 Teams Available	
I	1
II	2
III	3
IV-1	TN (Jun 23)
IV-2	
V	MI (Jul 27)
VI-1	NM (Jul 9)
VI-2	TX (Jul 6)
VII	
VIII	MT (Jul 6)
IX-1	CA (Jan 8)
IX-2	
X	AK (Aug 11)

REGIONAL BREAKDOWN				
	JFO	DR	EM	JRO
I	1	2	0	0
II	0	0	0	2
III	2	7	1	0
IV	7	21	5	1
V	0	2	0	0
VI	4	9	1	3
VII	1	18	0	0
VIII	1	1	0	0
IX	1	3	0	0
X	0	1	0	0

**Anchorage, AK**  
GLOF  
• R-X IMAT  
ETA Aug 13

**Pasadena, CA**  
DR-4856-CA  
• R-IX IMAT-1

**Santa Fe, NM**  
DR-4886-NM  
• R-VI IMAT-1



## IM Workforce

12,081 (-35) Assigned  
4,257 (-8) Unavailable  
5,671 (+46) Deployed

---

18% / 2,153 (-73) Available

## IM Cadre Availability

18 Cadres ≤ 25% Availability

Alternative Dispute Resolution: 3% (1/31); Civil Rights: 5% (6/114); Disability Integration 23% (6/26); External Affairs: 10% (34/328); Environmental Planning and Historic Preservation: 9% (64/697); Field Leadership: 8% (10/122); Financial Management: 16% (30/189); Hazard Mitigation: 6% (48/808); Human Resources: 11% (19/166); Individual Assistance: 18% (430/2,410); Interagency Recovery Coordination: 23% (57/247); Information Technology: 18% (113/623); Logistics: 20% (307/1,545); Operations: 14% (52/365); Public Assistance: 10% (214/2,084); Planning: 6% (21/373); Safety: 10% (9/91); Security: 13% (15/112)

**MERS**  
≥ 66%

33 Assigned  
3 Unavailable  
0 Deployed

---

30 Available

**US&R**  
≥ 66%

28 Assigned  
1 Unavailable  
0 Deployed

---

27 Available

**FCO**  
≤ 1 Type I

39 (-1) Assigned  
3 Unavailable  
32 (-1) (20 (-1) FCO) Deployed

---

4 Available

# Joint Preliminary Damage Assessments

Region	State / Location	Incident	IA	Number of Counties		Start - End
			PA	Requested	Complete	
I	VT	Severe Storms & Heavy Rainfall Jul 10	IA	0	0	N/A
			PA	2	2 (+2)	7/29 - 8/8
V	IL	Severe Weather & Flooding Jul 25-28	IA	3	0	TBD
			PA	0	0	N/A
VII	KS	Severe Storms and Tornado Jul 17-22	IA	0	0	N/A
			PA	5	0	TBD - TBD



FEMA

# Declaration Amendments

Declaration	Number	Issued	Action
FEMA-4882-DR-IN	1	Aug 11	Adds one county for Public Assistance
FEMA-4798-DR-TX	2	Jul 21	Appoints Jeremy Slinker as FCO
FEMA-4848-DR-KY	8	Jul 25	Appoints Tonia Pence as FCO



**FEMA**

# Declaration Requests in Process – 6

State / Tribe / Territory – Incident Description	Type	IA	PA	HM	Requested
CTM* – Severe Storms, Flooding, and Straight-line Winds	DR		X	X	Jul 17
ND – Severe Storms, Straight-line Winds, and Tornadoes	DR		X	X	Jul 21
NE – Severe Storms and Straight-line Winds	DR		X	X	Jul 24
NC – Tropical Depression Chantal	DR		X	X	Aug 5
KS – Severe Storms, Straight-line Winds, Tornadoes, and Flooding	DR		X	X	Aug 5
SWO** – Severe Storms and Flooding	DR	X	X	X	Aug 5

\*Crow Tribe of Montana

\*\*Sisseton-Wahpeton Oyate



**FEMA**



# FEMA

Helping people before, during, and after disasters.



*Scan to subscribe to this briefing.*