

FEMA National Watch Center

Daily Operations Briefing

Wednesday, July 16, 2025

8:30 a.m. ET



FEMA

National Current Ops / Monitoring

New Significant Incidents / Ongoing Ops

- Flash Flooding – Texas / New Mexico – FINAL

Hazard Monitoring

- Excessive Rainfall / Flash Flooding – Central Plains to Great Lakes, Ohio Valley to Mid-Atlantic
- Severe Thunderstorms – Central Plains and Great Lakes
- Fire Weather – Central Great Basin to Central Rockies
- Tropical Activity:
 - Atlantic (AL93): Disturbance 1: Medium (40%)

Disaster Declaration Activity

- No new declaration activity

Event Monitoring

- No new significant events



FEMA

Flash Flooding – Texas / New Mexico – FINAL



Situation: Locally executed, state-managed, and federally-supported operations continue throughout impacted areas of Texas and New Mexico. Instances of moderate to heavy rainfall occurred on Jul 15 across central Texas with some localized flash flooding, including on roadways. (FEMA RVI Advisory, as of 10:12 a.m. ET, Jul 15) No significant rainfall is expected in central Texas today. (WPC, as of 4:04 a.m. ET) Localized heavy rainfall is possible from today through the weekend in New Mexico, with the potential of up to 1" rain in some spots in and around the Ruidoso Area Complex burn scar.

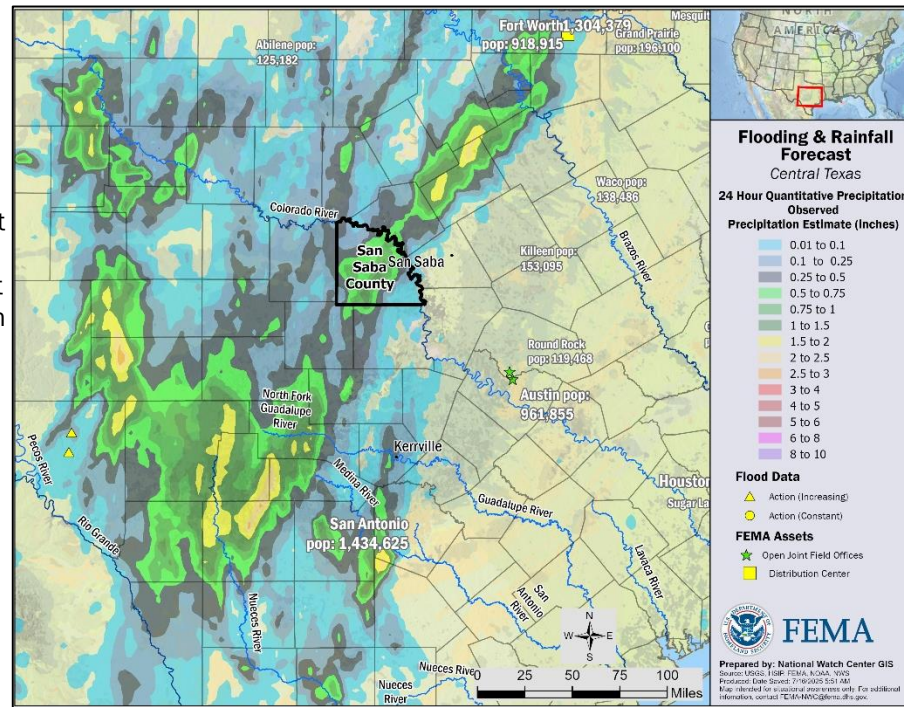
Lifeline Impacts: (FEMA RVI SLB, as of 5:00 p.m. ET, Jul 15)

Safety & Security: State-managed US&R operations resumed and remain ongoing

- TX:
 - State US&R operations resumed on Jul 14 following a brief pause for local weather impacts, focusing on secondary search, rescue, and recovery with support from Emergency Management Assistance Compact (EMAC) and FEMA
 - AR, ND, AZ continue to provide resources and personnel support
 - Mandatory evacuations for south of San Saba River, east of High Street and Wallace Street lifted on Jul 14

Food, Hydration, Shelter: Sheltering operations continue in TX and NM

- TX: (ARC Shelter Report, as of 6:51 a.m. ET, Jul 16)
 - 11 (-1) ARC shelters open / 287 (-35) occupants
 - 1 family reunification center is open in Kerrville VOADs feeding operations ongoing
- NM: (ARC Shelter Report, as of 6:51 a.m. ET, Jul 16)
 - 5 ARC shelters open / 128 (+59) occupants
 - 1 family reunification center is open in Ruidoso
 - American Red Cross continues feeding services
 - 2 shelters were put on standby as a readiness posture for continued flooding risk



- Health & Medical:** No change to reported fatalities
- TX: 123 fatalities statewide; 98 fatalities in Kerr County (FEMA RVI Update, as of 10:00 a.m. ET, Jul 11)
 - NM: 4 confirmed fatalities
- Water Systems:** Water restoration efforts are ongoing
- NM: 4 water systems down, 3 boil water advisories issued



Flash Flooding – Texas / New Mexico – FINAL



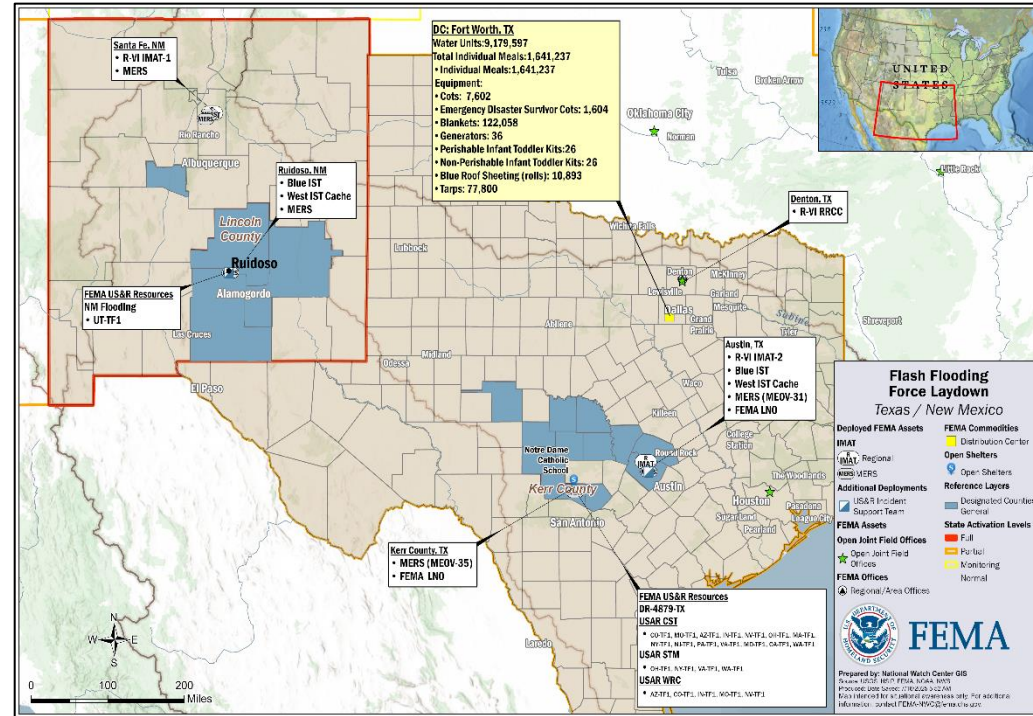
State / Local Response:

- TX:
 - SEOC is at Partial Activation (Flooding)
 - Texas A&M Forest Service strike teams activated to support debris and route clearance
 - FEMA-4879-DR-TX approved on Jul 6
- NM:
 - SEOC is at Full Activation (Flooding)
 - FEMA-3628-EM-NM approved Jul 10
 - NM State Police on patrol in areas with high potential for flooding
 - State SAR team demobilized Jul 13

FEMA / Federal Response:

FEMA Region VI: Watch is Monitoring; RRCC is at Level III (Flooding) with select ESFs

- TX: R-IMAT-2 is deployed to Austin, TX; FEMA LNOs deployed to Austin and Kerr County
- NM: R-IMAT-1 is deployed to Santa Fe, NM



NWC will continue to monitor. **Barring any significant new developments this will be the final report.**

HQ:

- NWC is Monitoring; NRCC is at Steady State; Gold Team is rostered
- N-IMAT White is available; R-IMAT backups identified and available
- Mobile Emergency Response Support deployed to TX/NM

US&R: (ESF 9 Advisory #4, as of 1:47 p.m. ET, Jul 14)

- Blue IST with West IST Cache deployed to Austin, TX established a branch in Ruidoso, NM
- USCG SAR assets in Kerrville, TX
- Three NIMS Type 1 Task Forces (CO-TF1, MO-TF1, IN-TF1) and 2 NIMS Type 3 Task Forces (AZ-TF1, NV-TF1) with water rescue capabilities deployed to TX
- 16 Canine Search Teams Task Forces (OH-TF1 (2), MO-TF1, MA-TF1, NY-TF1 (2), NJ-TF1, PA-TF1, VA-TF1 (3), MD-TF1, CA-TF1, WA-TF1 (3)) have been activated in TX
- 4 Search and Rescue Team Managers (OH-TF1, NY-TF1, VA-TF1, WA-TF1) have been activated in TX
- 5 ESF-13 Law Enforcement Strike Teams activated in TX
- UT-TF1 deployed to Ruidoso, NM as a NIMS Type 1 Task Force with ESF-13 LEST assets (FEMA RVI SLB, as of 5:00 p.m. ET, Jul 15)
- CBP Border Search Trauma and Rescue (BORSTAR) teams supporting search and rescue operations in TX (FEMA RVI SLB, as of 5:00 p.m. ET, Jul 15)



FEMA

National Watch Center

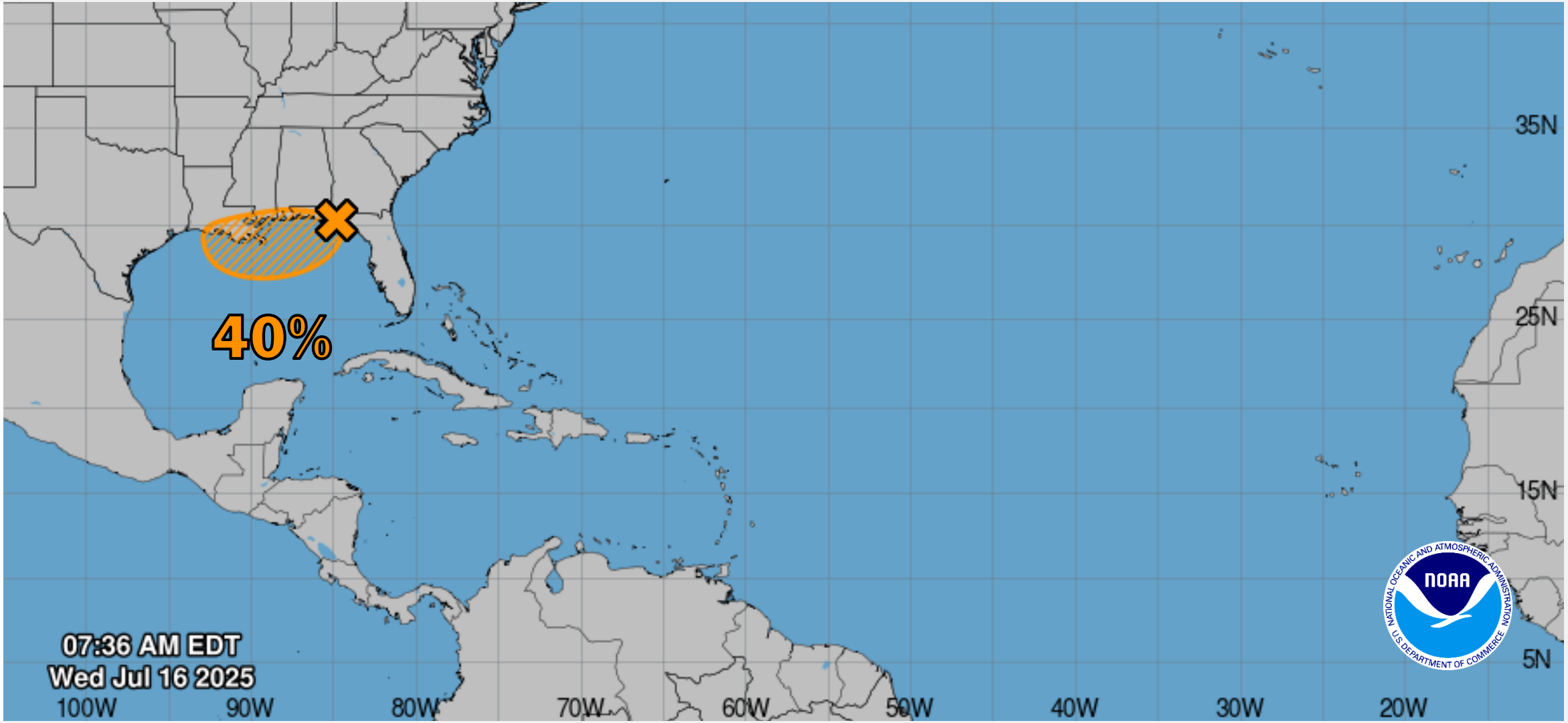
Central and East Pacific Overview

TROPICAL OUTLOOK



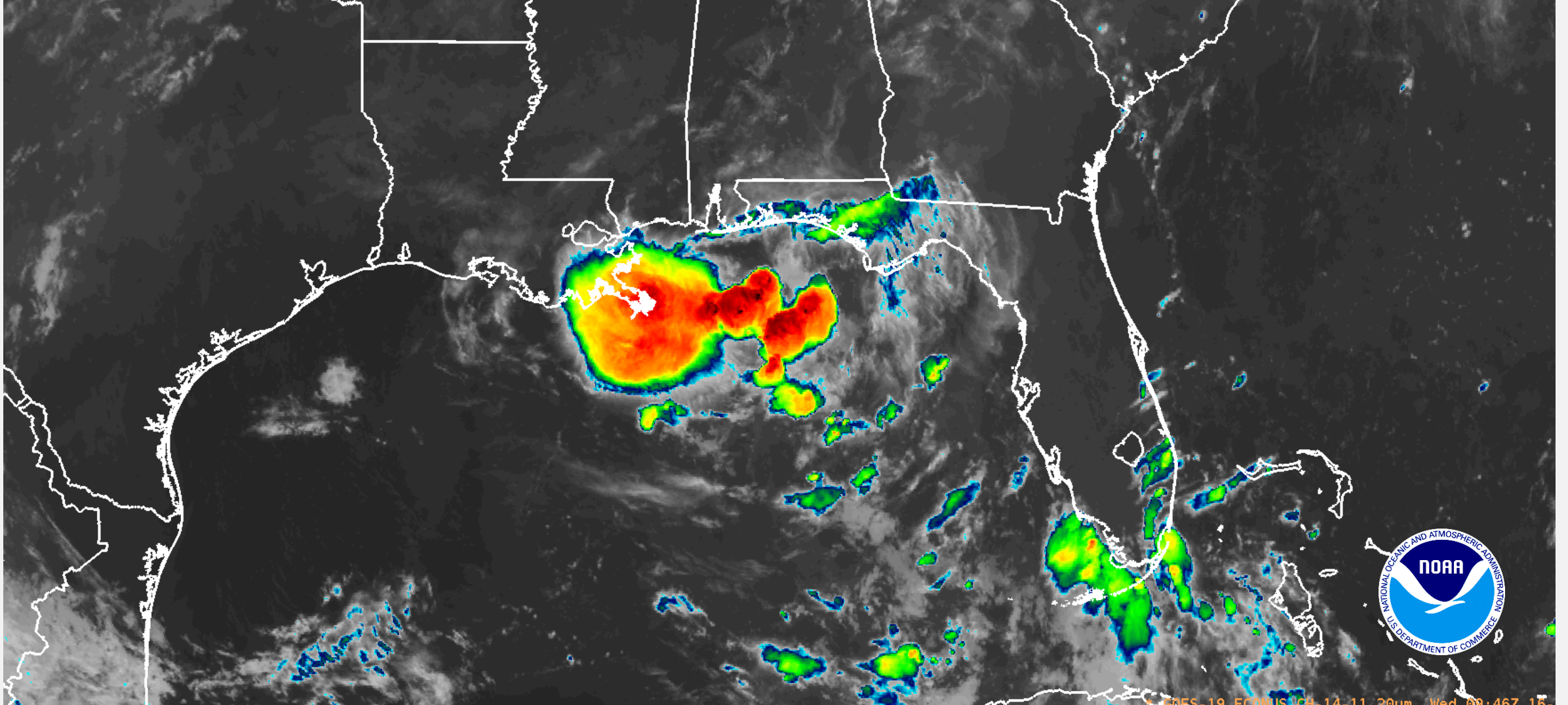
Atlantic Overview

TROPICAL OUTLOOK

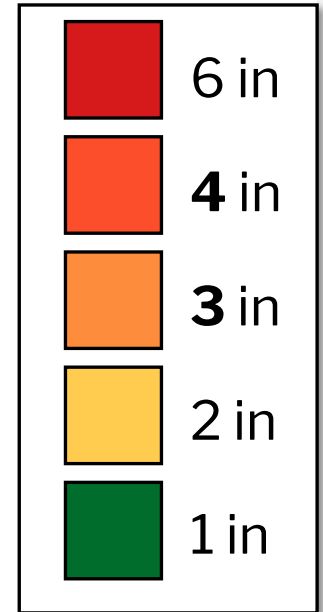
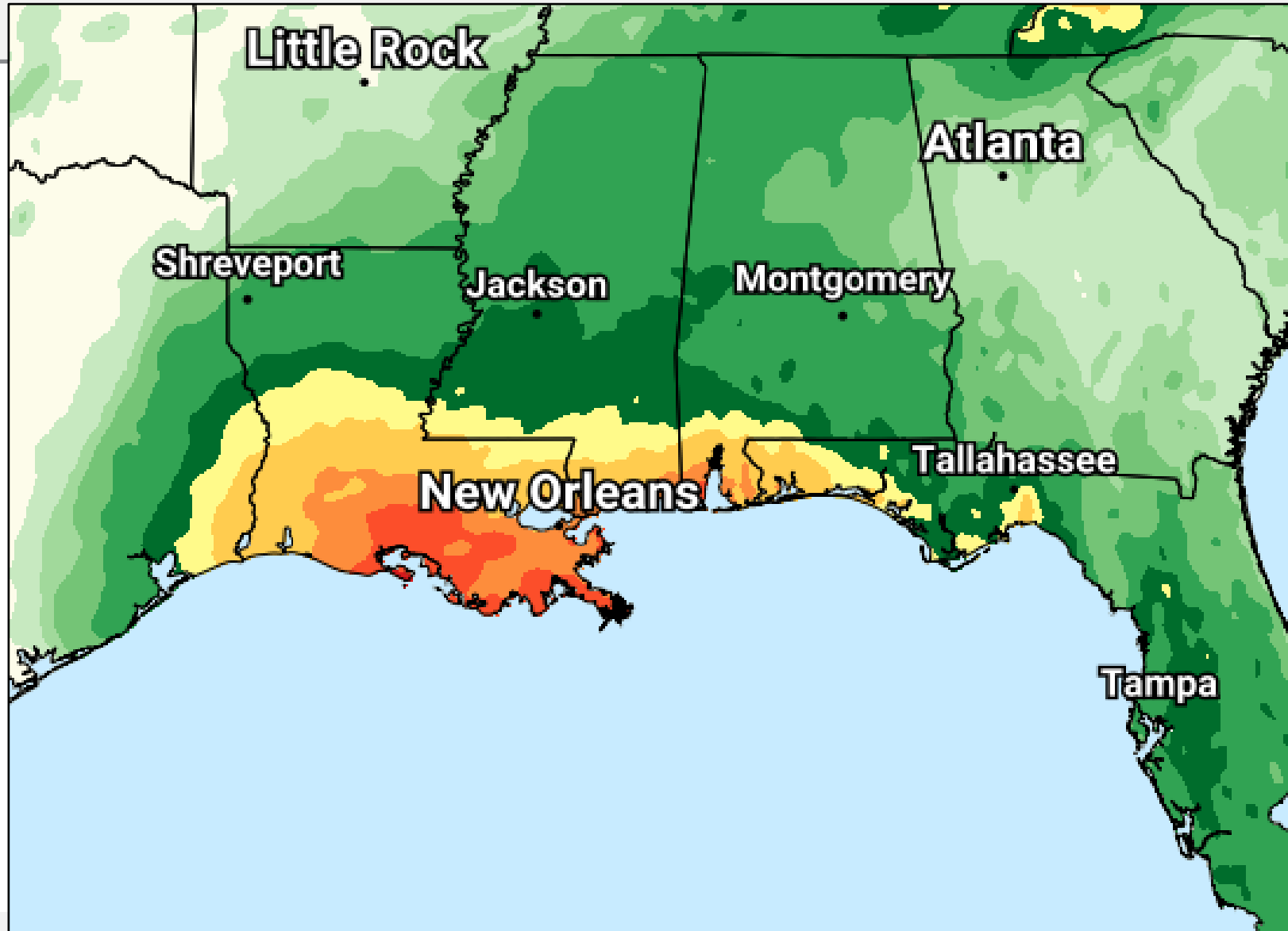


Invest 93L

SATELLITE LOOP



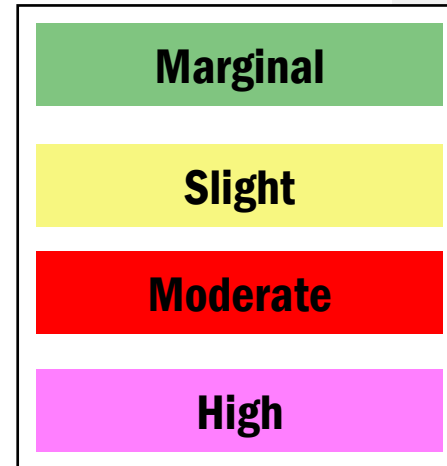
July 16-20 Rainfall Forecast



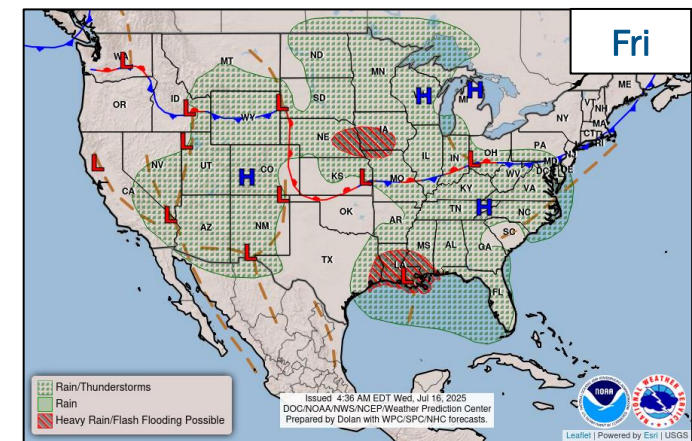
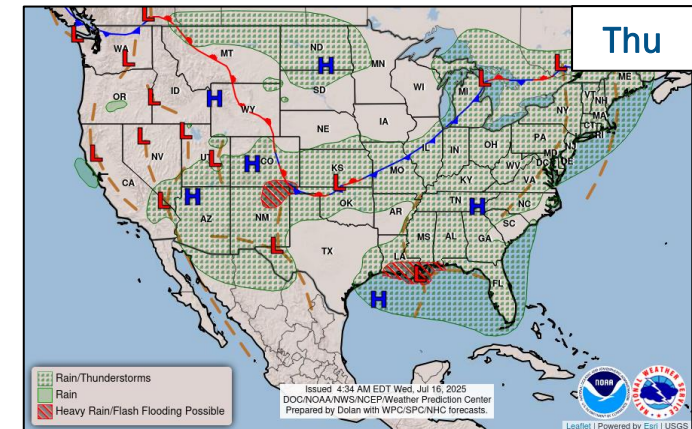
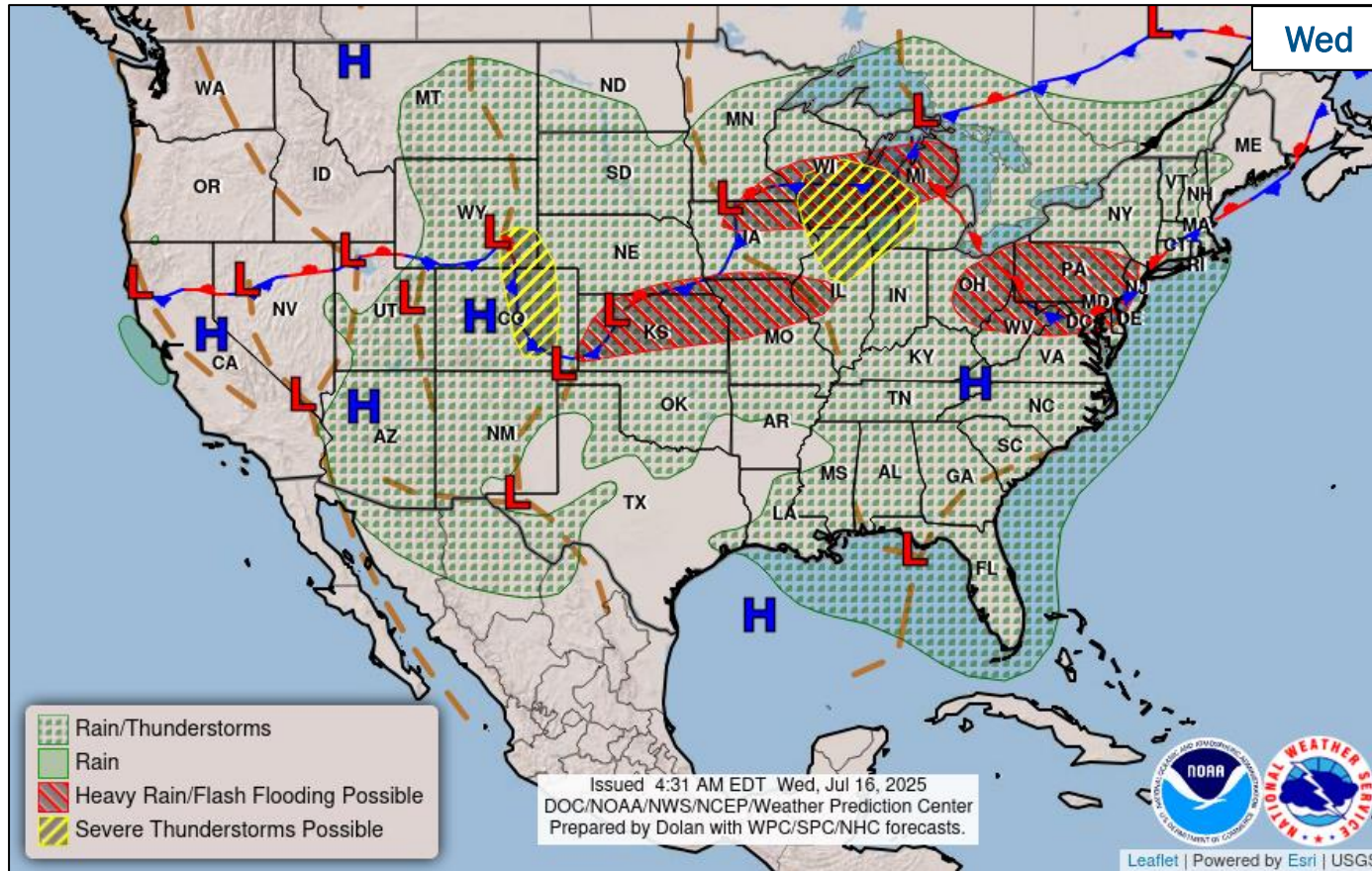
July 16-20 Flash Flooding Risk



Risk of Flash Flooding



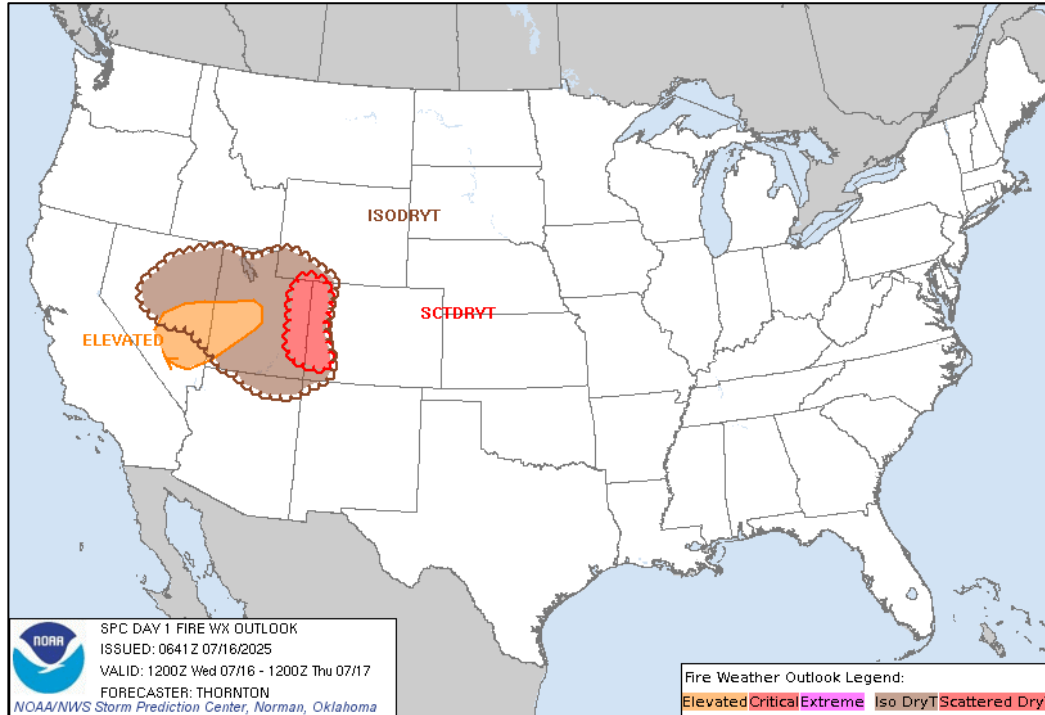
National Weather Forecast



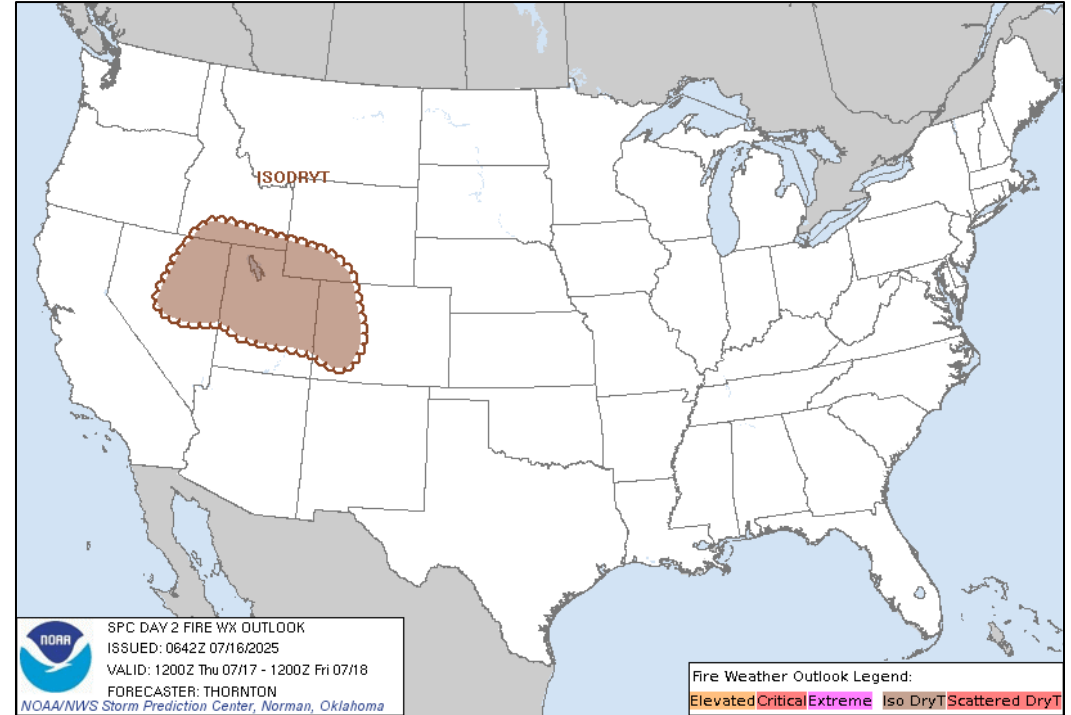
FEMA

National Watch Center

Fire Weather Outlook



Today



Tomorrow



FEMA

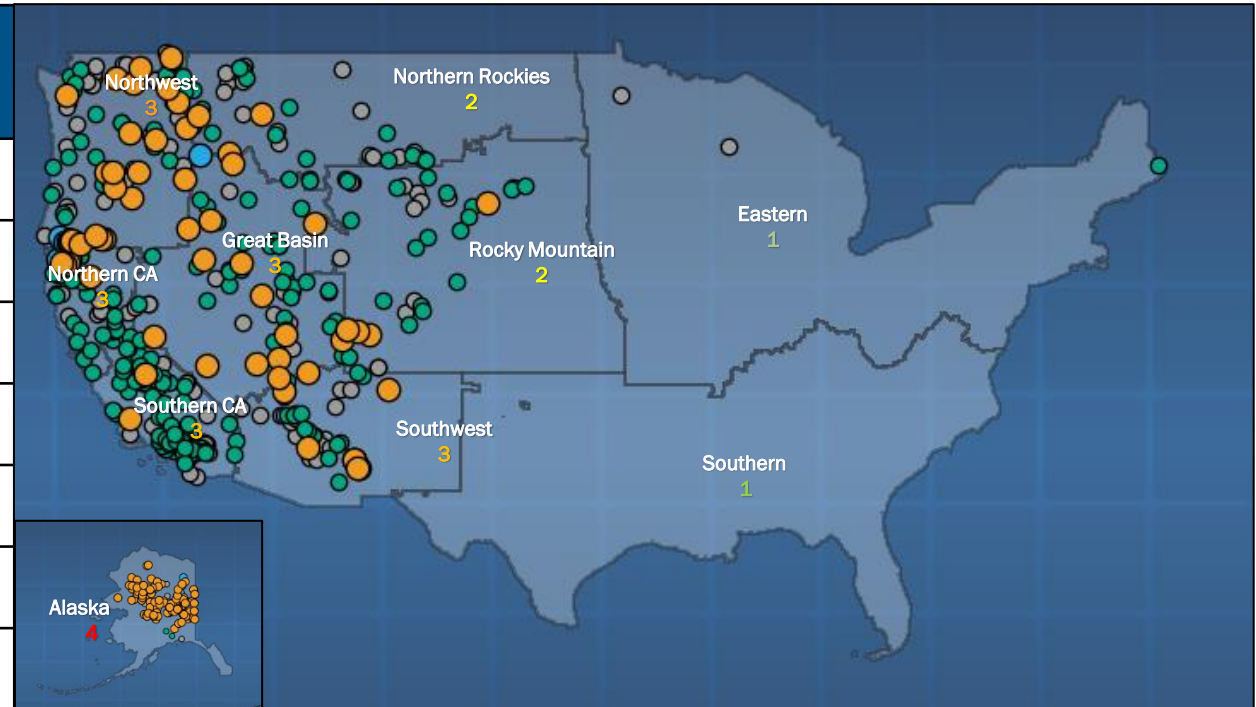
National Watch Center

National Fire Activity *(as of Jul 16)*

National Preparedness Level

PL 4

Initial Attack Activity <i>(24-hour period)</i>	Light <i>(115 fires)</i>
New Large Fires	10
Large Fires Contained	4
Uncontained Large Fires	42
Year-to-Date Acres Burned	2,647,028
Total Responders	16,414
Type 1 IMTs Deployed	0
Complex IMTs Deployed	19



Preparedness Levels Legend

PL 1	Minimal fire activity; many resources available
PL 2	Large wildland fires burning throughout country; resources mobilized from other areas
PL 3	Wildfire activity ongoing throughout 25% of country; National Interagency Coordination Center (NICC) sets priorities, allocates resources, and mobilizes assets at national level
PL 4	High levels of fire activity and areas are competing for firefighting resources; 60% of the nation's wildland firefighting resources committed
PL 5	Extremely high levels of fire activity; 80% of nation's firefighting resources committed

Wildfire Summary

Fire Name (County, ST)	FMAG #	Acres Burned	Percent Contained	Evacuations	Structures (Homes / Other)			Fatalities / Injuries
					Threatened	Damaged	Destroyed	
Himalaya Road (Fairbanks North Star, AK)	5596-FM-AK	6,194	12%	M: LIFTED*	H: 200	H: 0	H: 0	0 / 2
				V: 0	O: 0	O: 1	O: 0	
Nenana Ridge Complex (Fairbanks North Star, AK)	5597-FM-AK	33,107 (+18)	4% (+4%)	M: 10	H: 78	H: 0	H: 1	0 / 0
				V: 0	O: 49	O: 0	O: 1	
Deer Creek (San Juan, UT)	5598-FM-UT	12,906 (+1,862)	7%	M: 1,000	H: 225	H: 0	H: 12 (+1)	0 / 0
				V: 0	O: 96	O: 0	O: 1	
Highland (Crook County, OR) FINAL	5599-FM-OR	719	75% (+45%)	M: LIFTED**	H: 1,207	H: 0	H: 0	0 / 0
				V: 0	O: 360	O: 0	O: 0	

*FNSB Evacuation Zone Monitor, as of 4:30 a.m. ET

**OR State Fire Dashboard, as of 4:30 a.m. ET

(Evacuations: M = Mandatory / V = Voluntary; Structures: H = Homes and Mixed Commercial/Residential / O = Non-residential Commercial/Other Minor Structures)



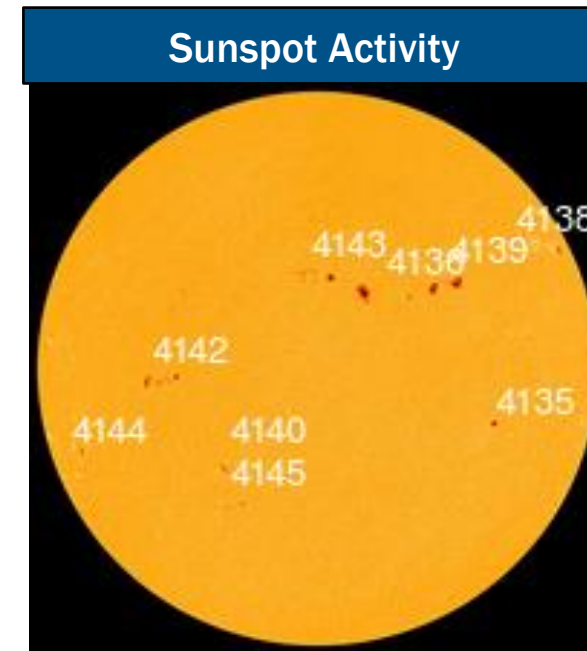
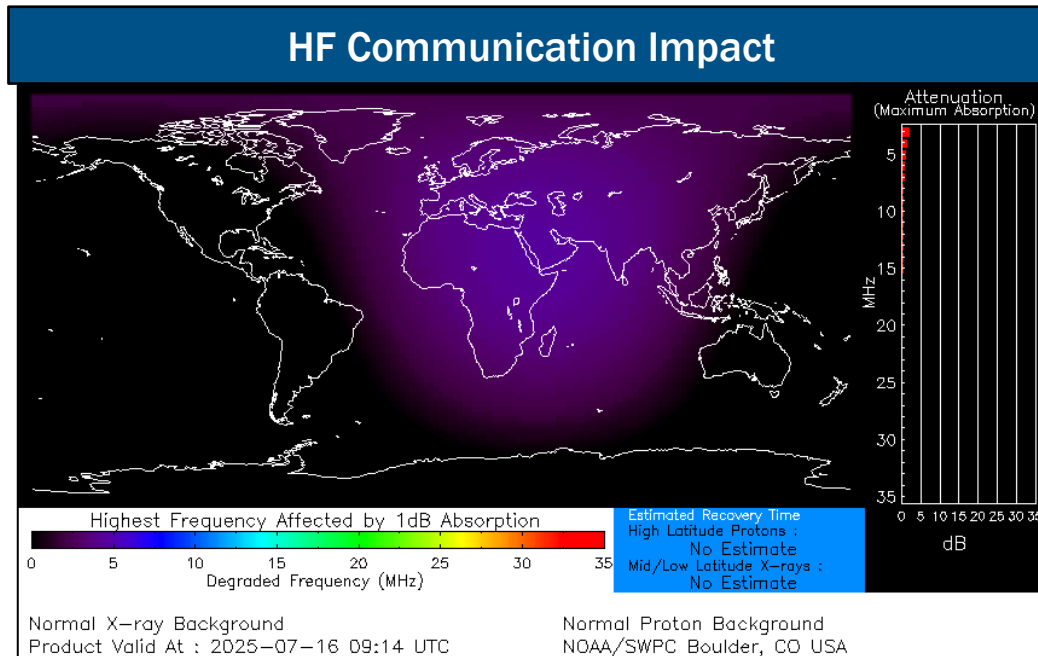
FEMA

National Watch Center

Space Weather Outlook

Minor	Space Weather Activity	Geomagnetic Storms	Solar Radiation	Radio Blackouts
Past 24 Hours	Minor	G1	None	None
Next 24 Hours	None	None	None	None

For further information on NOAA Space Weather Scales refer to: <http://www.swpc.noaa.gov/noaa-scales-explanation>
 For further information on Sunspot Activity refer to: <https://www.swpc.noaa.gov/phenomena/sunspotssolar-cycle>



FEMA

FEMA Common Operating Picture

19 Joint Field Offices **Supporting** **66 + 9** Major Disasters Emergency Declarations **11** Direct Housing Missions **14** RSF-Supported Disasters **6** Joint Recovery Offices

Wednesday
July 16, 2025
8:30 a.m. ET

FEMA HQ	
NWC	NRCC
Monitoring	Steady State
FEMA REGIONS	
Watch	RRCC
Monitoring I	Rostered
Monitoring II	Rostered
Monitoring III	Rostered
Monitoring IV	Rostered
Monitoring V	Rostered
Monitoring VI	Level III
Monitoring VII	Rostered
Monitoring VIII	Rostered
Monitoring IX	Rostered
Monitoring X	Rostered

N-IMATs	
2-5 Teams Available	
Red	
White	
Blue	
Gold	
HS	

R-IMATs	
4-6 Teams Available	
I	
II	2
III	Reconstituting
IV-1	TN (Jun 23)
IV-2	3
V	
VI-1	NM (Jul 9)
VI-2	TX (Jul 6)
VII	MO (Jun 10)
VIII	MT (Jul 6)
IX-1	CA (Jan 8)
IX-2	CA (Jun 30)
X	1

Notes:

NRCC/RWCs/RRCCs:	State EOCs:
• RV RWC: Staffing	• AK/AZ/CO/HI/OR/UT/WA: Wildfires
• RVI RRCC: Flooding	• MO/VA: Severe Weather
	• FL/KY/TN: Previous Incidents
	• MD/NM/TX: Flooding

Volunteer Force	
Rostered 7,985	Deployed 3
Surge Capacity Force	
Rostered 8,110 (-179)	Deployed 0

Fully Mission Capable (FMC)
Partially Mission Capable (PMC)
Not Mission Capable (NMC)
Deployed

REGIONAL BREAKDOWN			
	JFO	DR	EM JRO
I	1	2	0 0
II	0	0	0 2
III	2	8	1 0
IV	6	21	7 1
V	0	0	0 0
VI	3	9	1 3
VII	4	20	0 0
VIII	1	1	0 0
IX	2	5	0 0
X	0	0	0 0

Seattle, WA
Spectrum Cyclone Exercise
• MERS

Billings, MT
DR-4847-CTM
• R-VIII IMAT

St. Louis, MO
DR-4877-MO
• R-VII IMAT

Charleston, WV
DR-4783-WV
DR-4787-WV
Closing July 28

Oakland, CA
DR-4482-CA
• R-IX IMAT-2

Santa Fe, NM
EM-3628-NM
• R-VI IMAT-1
• MERS

Pasadena, CA
DR-4856-CA
• R-IX IMAT-1

Ruidoso, NM
EM-3628-NM
• Blue IST
• West IST Cache
• MERS

Kerrville, TX
DR-4879-TX
• MERS
USAR Water Rescue
• CO-TF1, MO-TF1, NV-TF1, AZ-TF1, IN-TF1
USAR CST (K9)
• OH-TF1 (x2), MO-TF1, MA-TF1, NY-TF1 (x2), NJ-TF1, PA-TF1, VA-TF1 (x3), MD-TF1, CA-TF1, WA-TF1 (x3)
USAR Search Team Managers
• OH-TF1, NY-TF1, VA-TF1, WA-TF1

Austin, TX
DR-4879-TX
• R-VI IMAT-2
• Blue IST
• West IST Cache
• MERS

Nashville, TN
DR-4878-TN
• R-IV IMAT-1

Atlanta, GA
Region IV Support
• MERS

Alaska
Nenana Ridge Complex
Himalaya Road

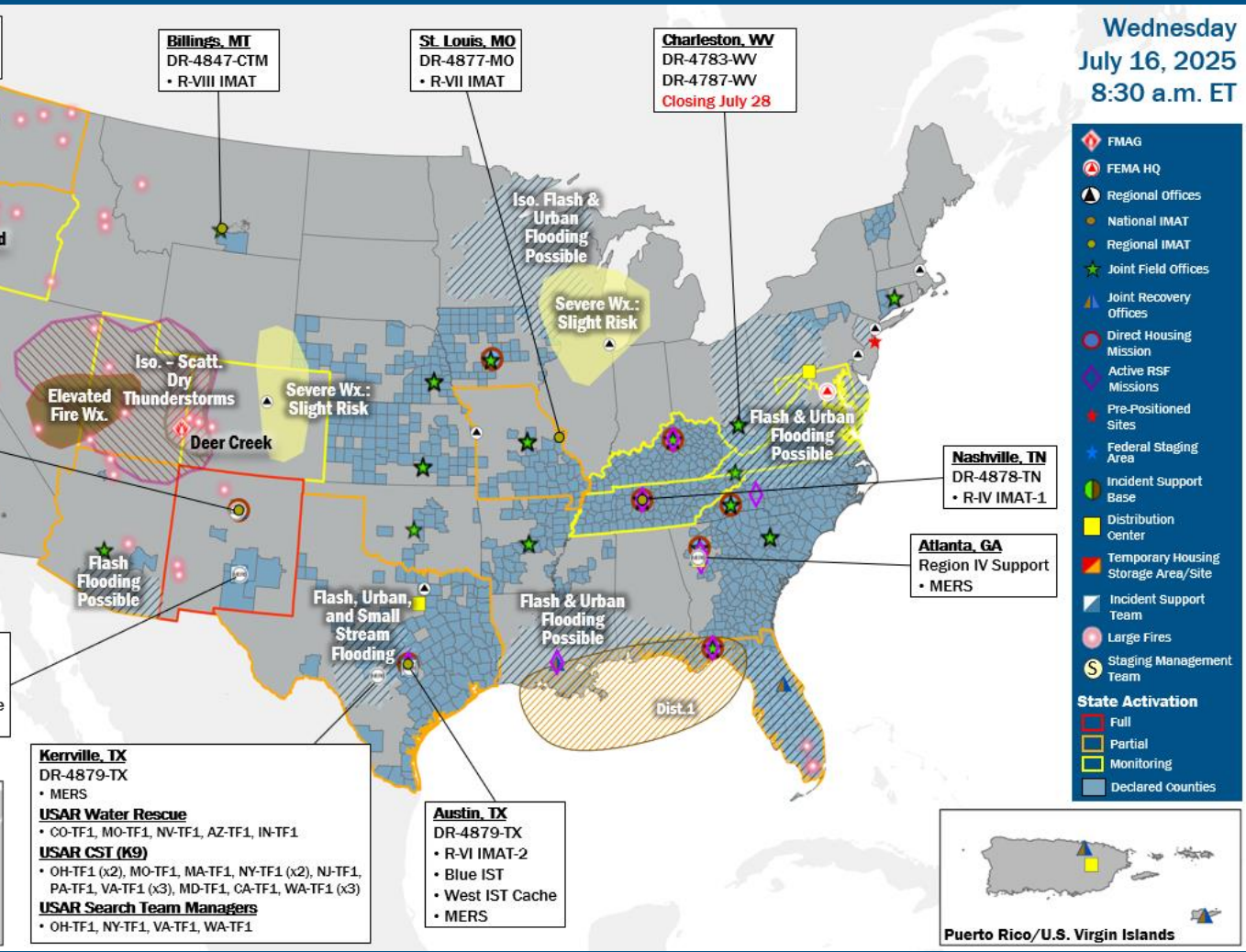
Commonwealth of Northern Mariana Islands

Guam

Hawaii

American Samoa

Puerto Rico/U.S. Virgin Islands



IM Workforce

12,265 (-1) Assigned
4,450 (-35) Unavailable
5,949 (+43) Deployed
15% / 1,866 (-9) Available

IM Cadre Availability

Alternative Dispute Resolution: 16% (5/31); Civil Rights: 18% (27/147); Disaster Field Training Operations: 13% (9/69); Disability Integration 25% (7/28); Disaster Survivor Assistance: 16% (180/1,093); External Affairs: 9% (31/330); Environmental Planning and Historic Preservation: 8% (58/707); Field Leadership: 5% (6/126); Financial Management: 16% (30/190); Hazard Mitigation: 5% (41/829); Human Resources: 15% (25/166); Individual Assistance: 15% (361/2,440); Interagency Recovery Coordination: 23% (58/247); Information Technology: 13% (83/627); Logistics: 19% (290/1,560); Operations: 9% (33/372); Public Assistance: 12% (258/2,106); Planning: 7% (25/382); Safety: 12% (11/93); Security: 23% (26/112)

20 Cadres ≤ 25% Availability

MERS

≥ 66%
33 Assigned
3 Unavailable
6 Deployed
24 Available

US&R

33-65%
28 Assigned
6 Unavailable
6 Deployed
16 Available

FCO

≤ 1 Type I
40 Assigned
0 Unavailable
37 (20 FCOR) Deployed
3 Available

Joint Preliminary Damage Assessments

Region	State / Location	Incident	IA	Number of Counties		Start - End
			PA	Requested	Complete	
IV	NC	Tropical Storm Chantal Jul 6	IA	2 (+1)	0	7/15 - TBD
			PA	0	0	N/A
V	LLBO*	Severe Thunderstorms Jun 21	IA	1	0	7/15 - TBD
			PA	1	0	7/15 - TBD
VII	KS	Severe Storms & Flooding Jun 14	IA	0	0	N/A
			PA	16	4 (+4)	6/30 - TBD
	NE	Severe Storms Jun 29-30	IA	0	0	N/A
			PA	1	0	7/16 - TBD
VIII	SWO**	Severe Storms and Flooding Jun 12-17	IA	1	0	7/14 - TBD
			PA	1	0	7/14 - TBD
	ND	Tornadoes and Severe Storms Jun 20-21	IA	0	0	N/A
			PA	17	0	TBD - TBD

*Leech Lake Band of Ojibwe, **Sisseton-Wahpeton Oyate



FEMA

National Watch Center

Declaration Requests in Process – 12

State / Tribe / Territory – Incident Description	Type	IA	PA	HM	Requested
MI – Severe Winter Storm	DR	X	X	X	May 16
OR – Severe Storms, Flooding , Landslides, Mudslides	DR	X	X	X	May 19
IN – Severe Storms, Straight-line Winds, Tornadoes, and Flooding	DR	X	X	X	May 28
KY – Severe Winter Storm (Appeal)	DR		X	X	Jun 4
MD – Severe Storms and Flooding	DR		X	X	Jun 11
KS – Severe Storms, Straight-line Winds, Tornadoes, and Flooding	DR		X	X	Jun 17
WV – Severe Storms, Straight-line Winds, Landslides, and Flooding	EM		X		Jun 20
WV – Severe Storms, Straight-line Winds, Landslides, and Flooding	DR	X		X	Jun 20
MO – Severe Storms and Flooding	DR		X	X	Jun 21
RST* – Severe Storms, Straight-line Winds, and a Tornado	DR	X	X	X	Jun 26
RRPIC** – Flooding, Fire Hazard, and Hazardous Material Contamination	EM		X		Jun 24
OK – Severe Storms, Tornadoes, Straight-line Winds, and Flooding	DR		X	X	Jul 2

**Rosebud Sioux Tribe, ** Robinson Rancheria of Pomo Indians of California*



FEMA



FEMA

Helping people before, during, and after disasters.



Scan to subscribe to this briefing.