

FEMA National Watch Center

# Daily Operations Briefing

Tuesday, July 15, 2025

8:30 a.m. ET



**FEMA**

# National Current Ops / Monitoring

---

## New Significant Incidents / Ongoing Ops

- Flash Flooding – Texas / New Mexico

## Hazard Monitoring

- Excessive Rainfall / Flash Flooding – Southwest, Texas, Upper Mississippi Valley, Mid-Atlantic, and Southeast
- Severe Weather– Central / Northern Plains and the Western Great Lakes Region
- Fire Weather – Southwest and Great Basin
- Tropical Activity:
  - Atlantic: Disturbance 1: Med (40%)

---

## Disaster Declaration Activity

- No new declaration activity

## Event Monitoring

- No new significant events



**FEMA**

# Flash Flooding – Texas / New Mexico



**Situation:** Local evacuation orders from Jul 13 for the San Saba area have been lifted and search and rescue/recovery operations have resumed. (FEMA RVI SLB as of 5:00 p.m. ET, Jul 14) Four of the deployed Federal US&R Task Forces (MO-TF1, IN-TF1, and CO-TF1 in Texas and UT-TF1 in New Mexico) have augmented to Type 1. (ESF #9 Advisory 4, as of 1:47 p.m. ET, Jul 14) A Slight risk (15-40% chance) of excessive rainfall and flash flooding remains in effect in central Texas today, with Flood Watches active until 2:00 p.m. ET in the Hill Country, Edwards Plateau, I-35 Corridor, and Rio Grande Plains. (WPC, as of 4:00 a.m. ET) Rainfall in New Mexico could generate flash flooding along burn scars, particularly later in the week. (NWS Albuquerque, as of 3:59 p.m. ET, Jul 14)

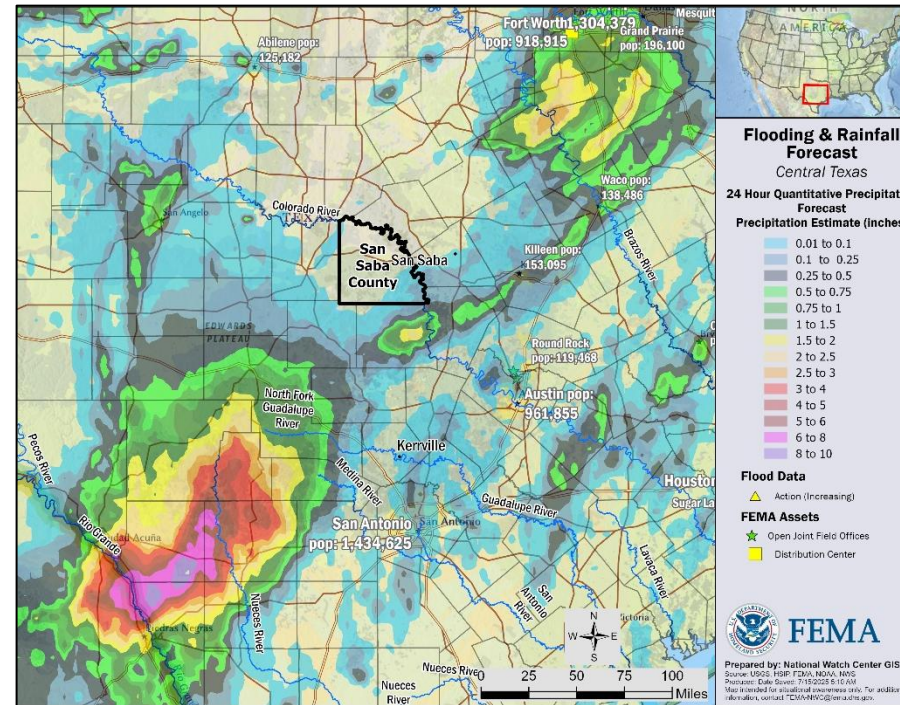
**Lifeline Impacts:** (FEMA RVI SLB as of 5:00 p.m. ET, Jul 14)

**Safety & Security:** State-managed US&R operations resumed and remain ongoing

- TX:
  - State US&R operations resumed on Jul 14 following a brief pause for local weather impacts, focusing on secondary search, rescue, and recovery with support from Emergency Management Assistance Compact (EMAC) and FEMA
  - AR, ND, AZ continue to provide resources and personnel support
  - Mandatory evacuations for south of San Saba River, east of High Street and Wallace Street lifted on Jul 14

**Food, Hydration, Shelter:** Sheltering operations continue in TX and NM

- TX:
  - 12 (+2) ARC shelters open / 322 (+5) occupants (ARC Shelter Report, as of 6:51 a.m. ET, Jul 15)
  - 1 family reunification center is open in Kerrville VOADs feeding operations ongoing
- NM:
  - 5 (-1) ARC shelters open / 69 (-31) occupants (ARC Shelter Report, as of 6:51 a.m. ET, Jul 15)
  - 1 family reunification center is open in Ruidoso
  - American Red Cross continues feeding services



**Health & Medical:** No change to reported fatalities

- TX: 123 fatalities statewide; 98 fatalities in Kerr County (Region VI Update, as of 10:00 a.m. ET, Jul 11)

- NM: 4 confirmed fatalities

**Water Systems:** Water restoration efforts are ongoing

- NM:
  - 4 water systems down, 3 issued boil water advisories
  - Ruidoso wastewater management collection system continues to experience problems; currently utilizing vacuum trucks. (FEMA RVI SLB as of 5:00 p.m. ET, Jul 14)



# Flash Flooding – Texas / New Mexico



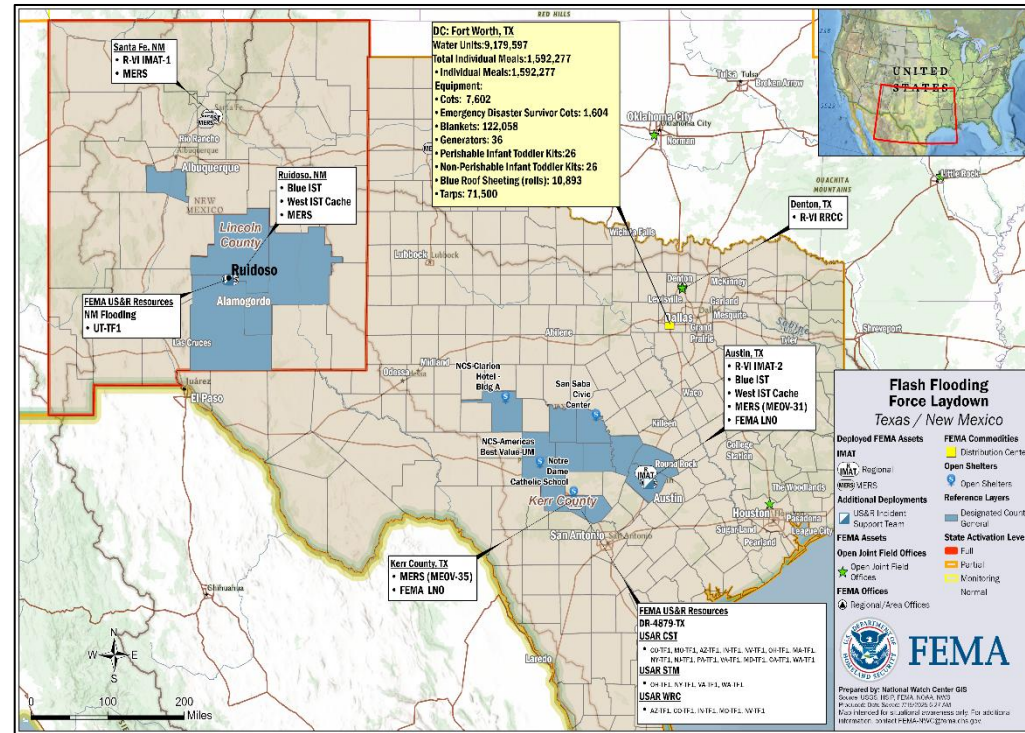
## State / Local Response:

- TX:
  - TX SEOC is at Partial Activation (Flooding)
  - Texas A&M Forest Service strike teams activated to support debris and route clearance
  - FEMA-4879-DR-TX approved on Jul 6
- NM:
  - NM SEOC is at Full Activation (Flooding)
  - FEMA-3628-EM-NM approved Jul 10
  - NM State Police on patrol in areas with high potential for flooding (FEMA RVI SLB as of 5:00 p.m. ET, Jul 14)
  - NM State SAR team demobilized Jul 13. (FEMA RVI SLB as of 5:00 p.m. ET, Jul 14)

## FEMA / Federal Response:

**FEMA Region VI:** Watch is Monitoring; RRCC is at Level III (Flooding) with select ESFs

- TX: R-IMAT-2 is deployed to Austin, TX; FEMA LNOs deployed to Austin and Kerr County
- NM: R-IMAT-1 is deployed to Santa Fe, NM



NWC will continue to monitor; reporting will continue twice daily in the FEMA National Situation Report (5:00 p.m./3:00 a.m. ET) and the FEMA Daily Operations Briefing (8:30 a.m. ET).

## HQ:

- NWC is Monitoring; NRCC is at Steady State; Gold Team is rostered
- N-IMAT White is available; R-IMAT backups identified and available
- Mobile Emergency Response Support deployed to TX/NM

## US&R: (ESF #9 Advisory 4, as of 1:47 p.m. ET, Jul 14)

- Blue IST with West IST Cache deployed to Austin, TX established a branch in Ruidoso, NM
- USCG SAR assets in Kerrville, TX
- Three NIMS Type 1 Task Forces (CO-TF1, MO-TF1, IN-TF1) and 2 NIMS Type 3 Task Forces (AZ-TF1, NV-TF1) with water rescue capabilities deployed to TX
- 16 Canine Search Teams Task Forces (OH-TF1 (2), MO-TF1, MA-TF1, NY-TF1 (2), NJ-TF1, PA-TF1, VA-TF1 (3), MD-TF1, CA-TF1, WA-TF1 (3)) have been activated in TX
- 4 Search and Rescue Team Managers (OH-TF1, NY-TF1, VA-TF1, WA-TF1) have been activated in TX
- 5 ESF-13 Law Enforcement Strike Teams activated in TX
- UT-TF1 deployed to Ruidoso, NM as a NIMS Type 1 Task Force
- CBP Border Search Trauma and Rescue (BORSTAR) teams supporting search and rescue operations in TX

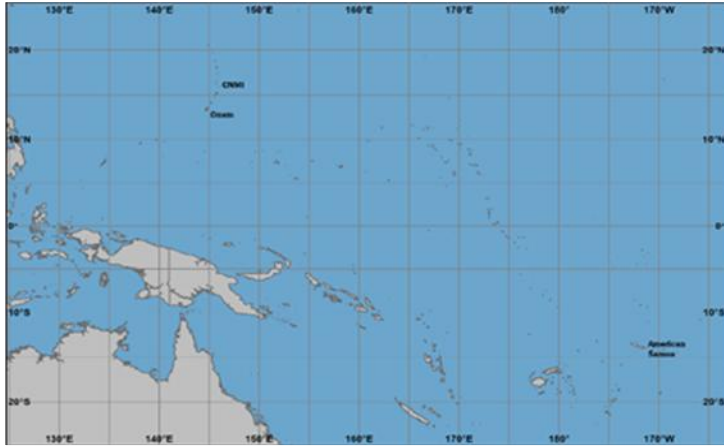


# FEMA

National Watch Center

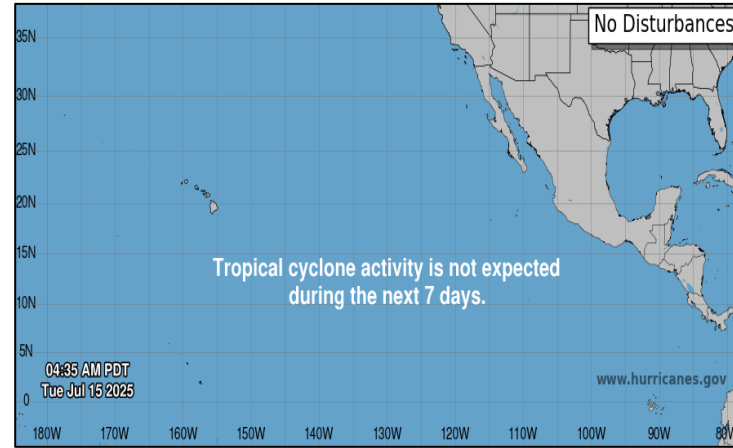
# Tropical Outlook

## Western Pacific



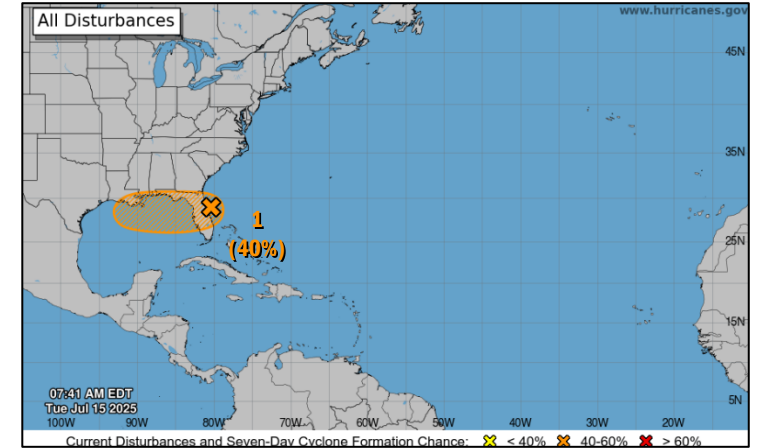
- No tropical cyclones threatening the U.S. territories

## Central and Eastern Pacific



- No tropical cyclones expected during the next 7 days

## Atlantic



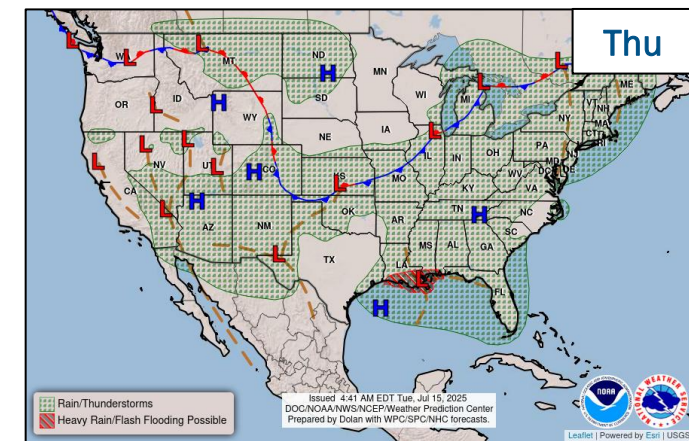
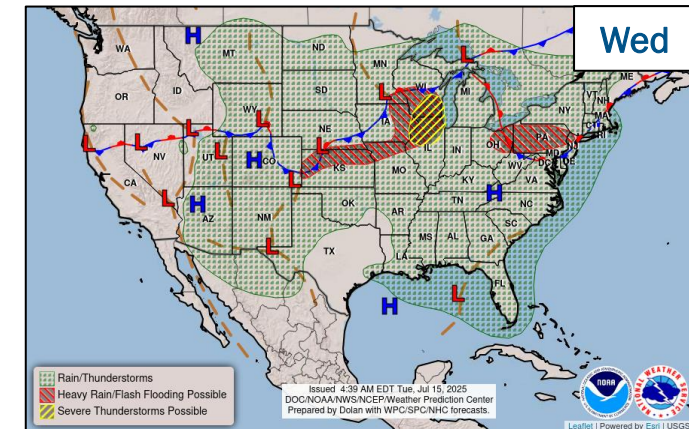
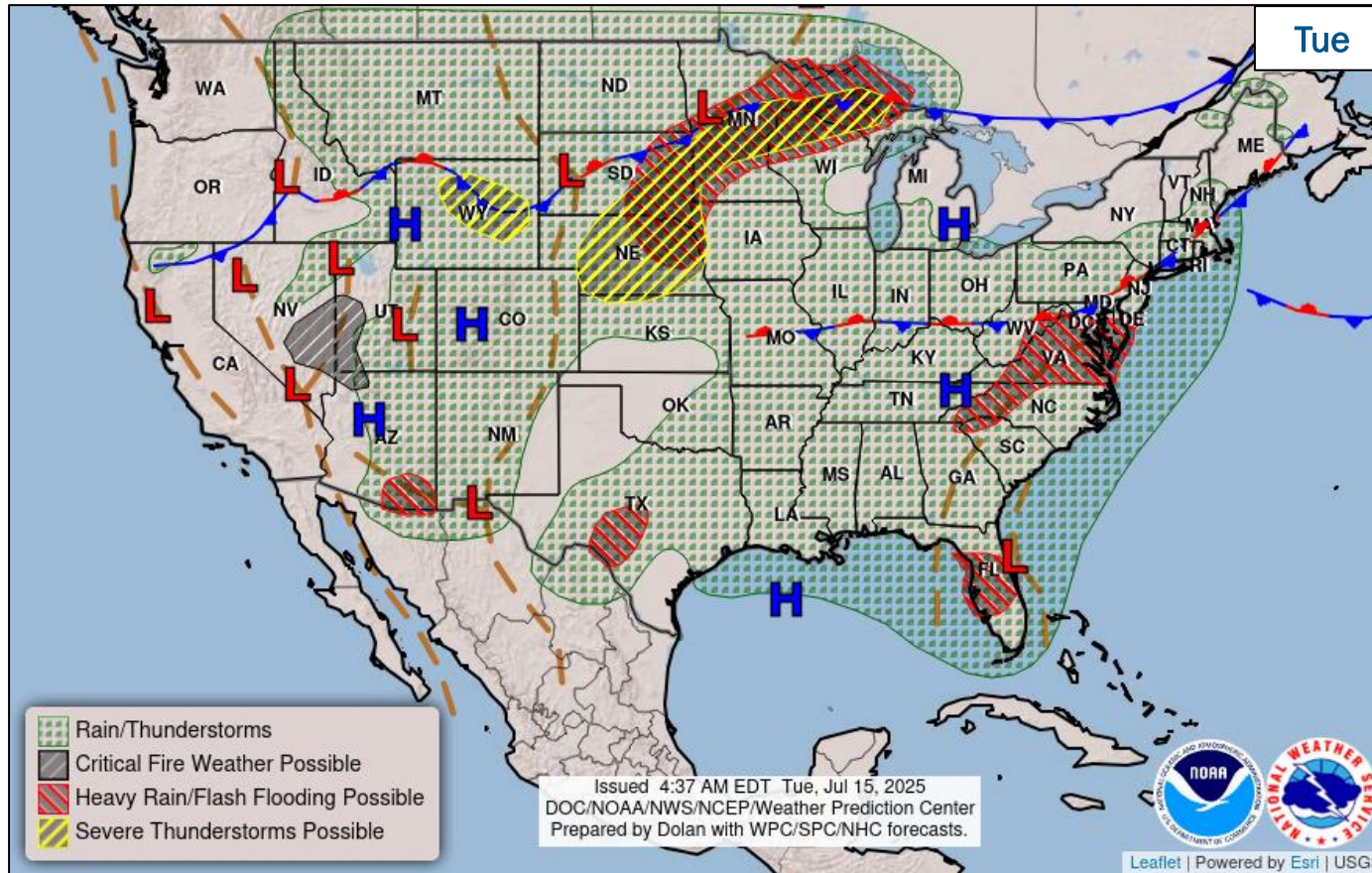
### Disturbance 1 (AL93): (as of 8:00 a.m. ET)

- Located offshore of the east coast of Florida
- Environmental conditions appear generally favorable for additional development; a tropical depression could form
- Regardless of development, heavy rainfall could produce localized flash flooding over portions of Florida through mid-week
- Formation chance – 48-hours: Med (40%); 7-days: Med (40%)



FEMA

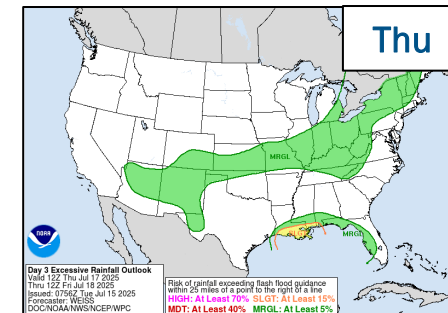
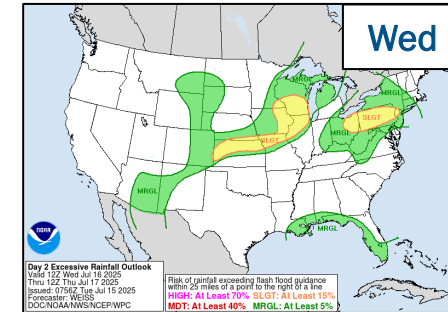
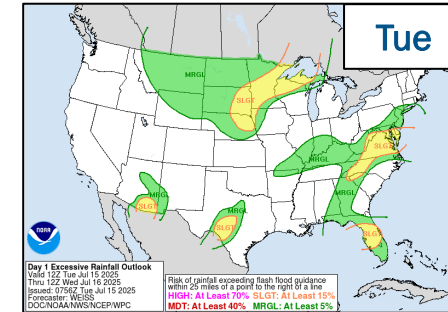
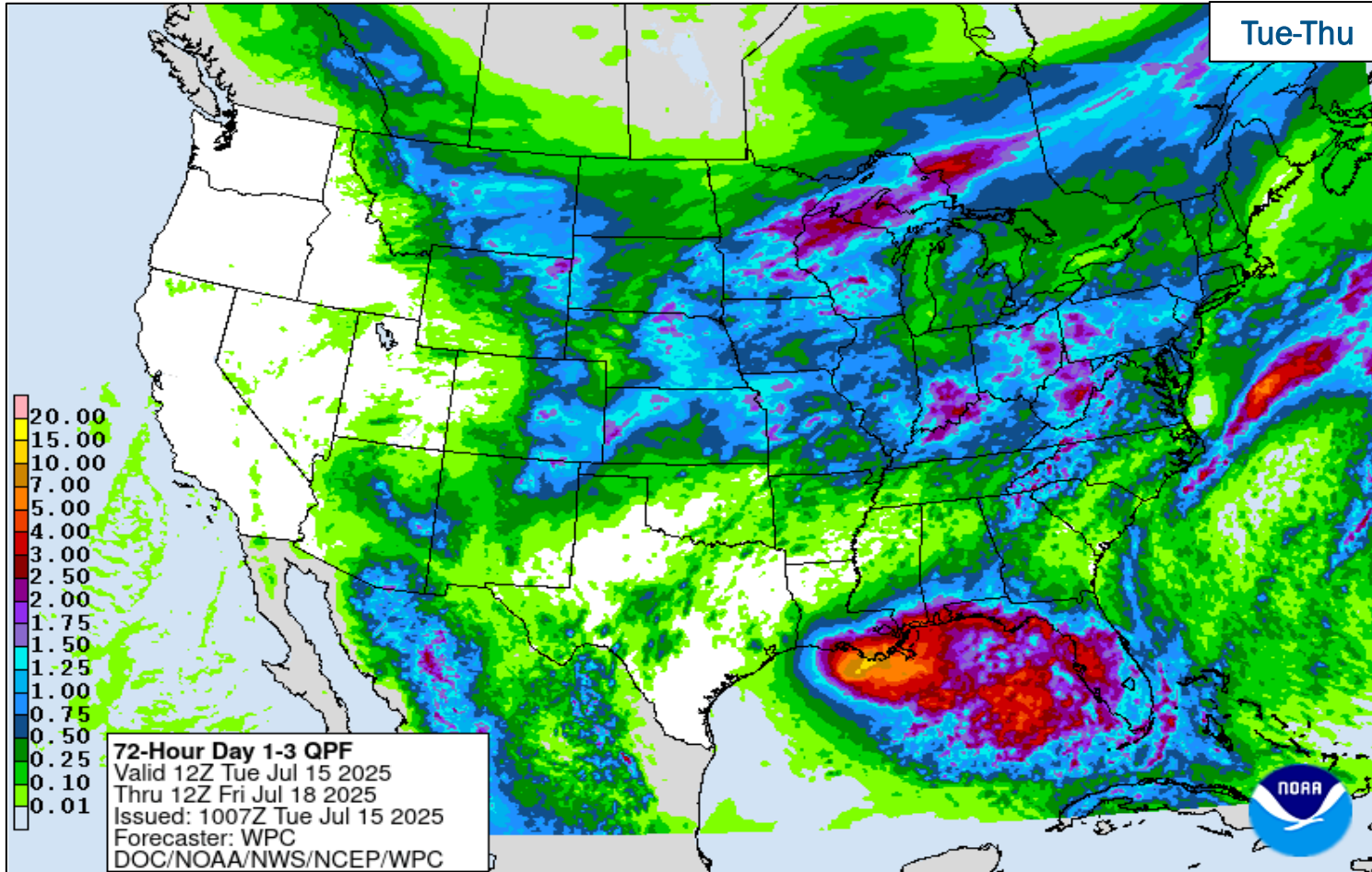
# National Weather Forecast



FEMA

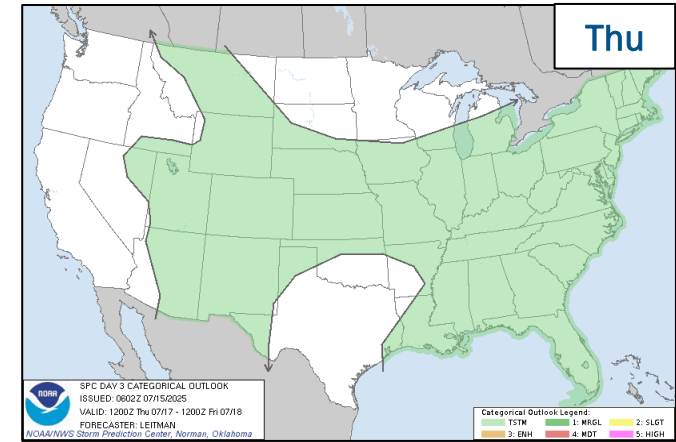
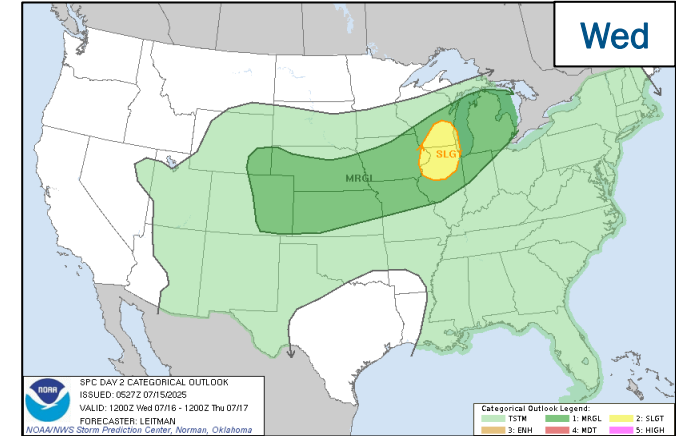
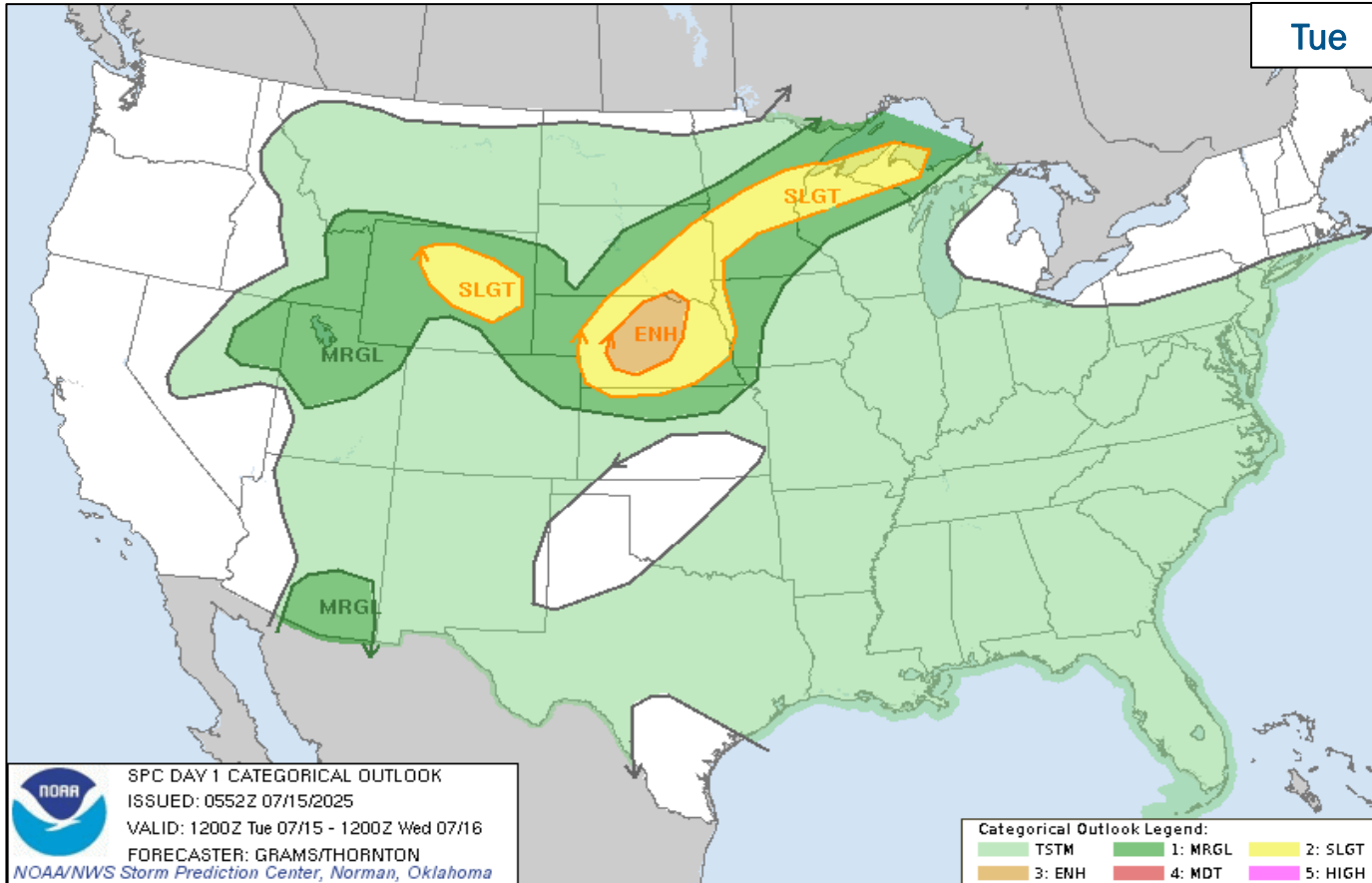
National Watch Center

# Precipitation & Excessive Rainfall



**FEMA**

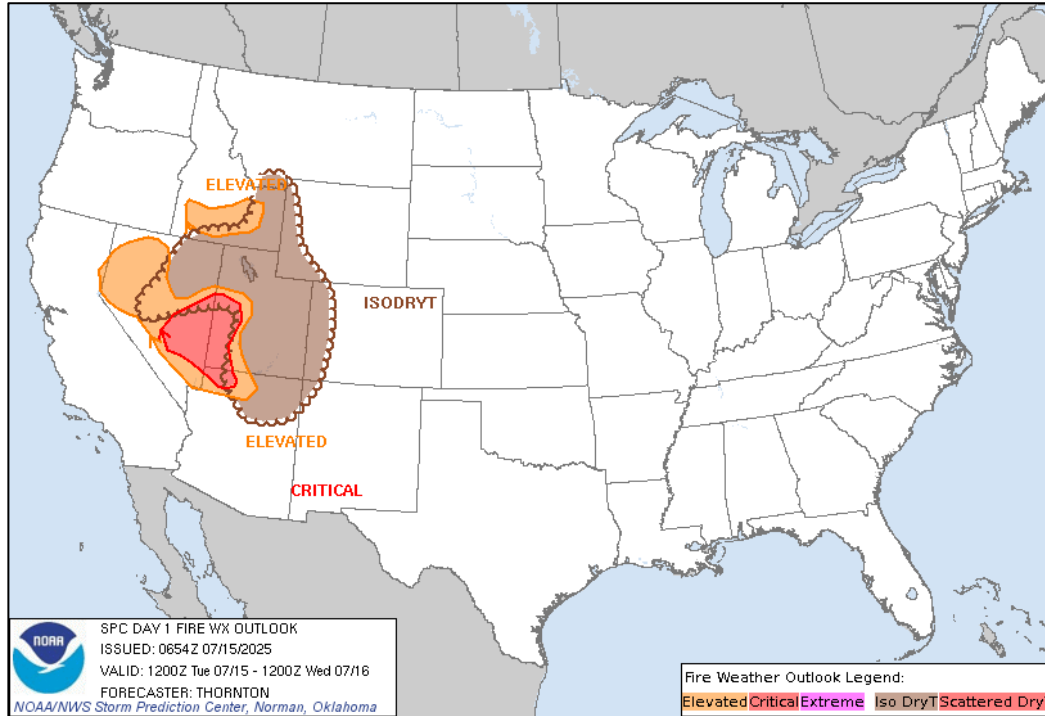
# Severe Weather Outlook



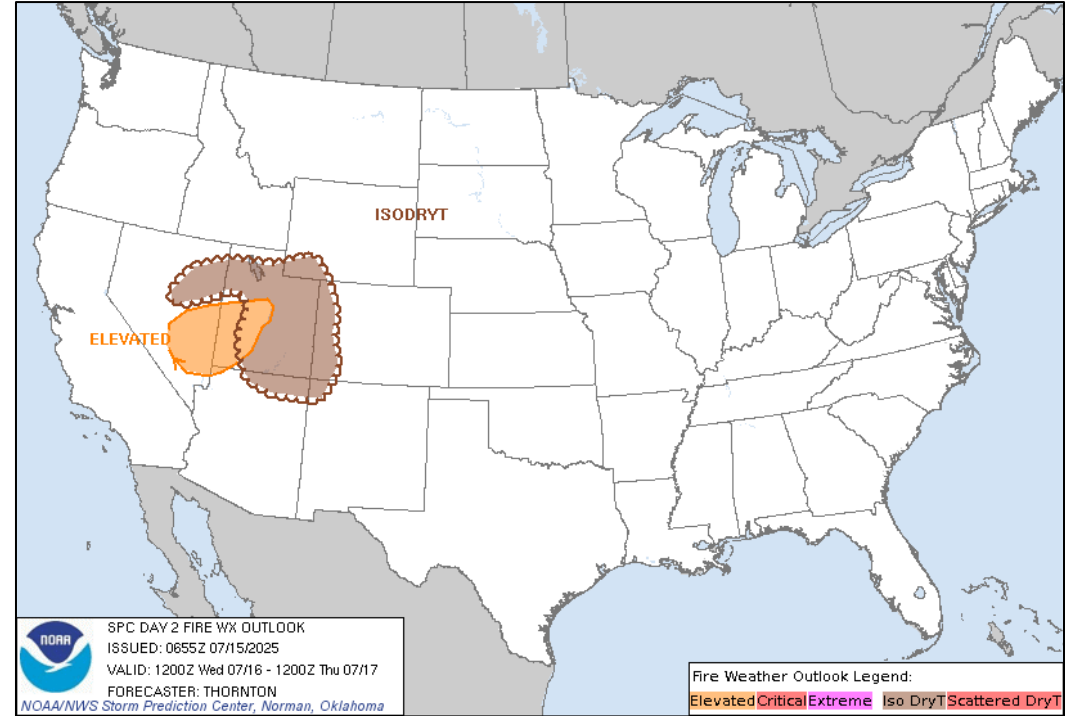
FEMA

National Watch Center

# Fire Weather Outlook



Today



Tomorrow



FEMA

National Watch Center

# Wildfire Summary

Fire Name (County, ST)	FMAG #	Acres Burned	Percent Contained	Evacuations	Structures (Homes / Other)			Fatalities / Injuries
					Threatened	Damaged	Destroyed	
Bear Creek (Denali Borough, AK) FINAL	5595-FM-AK	30,988	37% (+9)	M: LIFTED*	H: 0	H: 0	H: 32 (+6)	0 / 8
				V: 0	O: 0	O: 0	O: 30 (+6)	
Himalaya Road (Fairbanks North Star Borough, AK)	5596-FM-AK	6,194 (+139)	12%	M: LIFTED	H: 200	H: 0	H: 0	0 / 2
				V: 0	O: 0	O: 1	O: 0	
Nenana Ridge Complex (Fairbanks North Star, AK)	5597-FM-AK	33,089	0%	M: 10	H: 78	H: 0	H: 1	0 / 0
				V: 0	O: 49	O: 0	O: 1	
Deer Creek (San Juan, UT)	5598-FM-UT	11,044 (+2,119)	7% (+7)	M: 1000 (+500)	H: 225 (+4)	H: 0	H: 11 (+1)	0 / 0
				V: 0	O: 96 (+3)	O: 0	O: 1 (-11)	
Highland (Crook County, OR)	5599-FM-OR	719	30% (+25)	M: 500	H: 1,207	H: 0	H: 0	0 / 0
				V: 0	O: 360	O: 0	O: 0	

(Evacuations: M = Mandatory / V = Voluntary; Structures: H = Homes and Mixed Commercial/Residential / O = Non-residential Commercial/Other Minor Structures)

\*FNSB Evacuation Zone Monitor, as of 3:00 p.m. ET, Jul 14



FEMA

National Watch Center

# FEMA Common Operating Picture

**19** Joint Field Offices **69 + 9** Major Disasters Emergency Declarations **10** Direct Housing Missions **14** RSF-Supported Disasters **6** Joint Recovery Offices

Tuesday  
July 15, 2025  
8:30 a.m. ET

FEMA HQ	
NWC	NRCC
Monitoring	Steady State
FEMA REGIONS	
Watch	RRCC
Monitoring I	Rostered
Monitoring II	Rostered
Monitoring III	Rostered
Monitoring IV	Rostered
Monitoring V	Rostered
Monitoring VI	Level III
Monitoring VII	Rostered
Monitoring VIII	Rostered
Monitoring IX	Rostered
Monitoring X	Rostered

N-IMATs	
2-5 Teams Available	
Red	
White	
Blue	
Gold	
HS	

R-IMATs	
4-6 Teams Available	
I	
II	2
III	Reconstituting
IV-1	TN (Jun 23)
IV-2	3
V	
VI-1	NM (Jul 9)
VI-2	TX (Jul 6)
VII	MO (Jun 10)
VIII	MT (Jul 6)
IX-1	CA (Jan 8)
IX-2	CA (Jun 30)
X	1

**Notes:**

**NRCC/RWCs/RRCCs:**

- RV RWC: Staffing
- RVI RRCC: Flooding

**State EOCs:**

- AK/AZ/HI/OR/UT/WA: Wildfires
- MO/VA/NJ: Severe Weather
- FL/KY/TN: Previous Incidents
- MD/NM/TX: Flooding

Volunteer Force	
Rostered 7,985	Deployed 3
Surge Capacity Force	
Rostered 8,289	Deployed 0

Fully Mission Capable (FMC)

Partially Mission Capable (PMC)

Not Mission Capable (NMC)

Deployed

REGIONAL BREAKDOWN				
	JFO	DR	EM	JRO
I	1	2	0	0
II	0	0	0	2
III	2	8	1	0
IV	6	24	7	1
V	0	0	0	0
VI	3	9	1	3
VII	4	20	0	0
VIII	1	1	0	0
IX	2	5	0	0
X	0	0	0	0

**Oakland, CA**  
DR-4482-CA  
• R-IX IMAT-2

**Santa Fe, NM**  
EM-3628-NM  
• R-VI IMAT-1  
• MERS

**Pasadena, CA**  
DR-4856-CA  
• R-IX IMAT-1

**Ruidoso, NM**  
EM-3628-NM  
• Blue IST  
• West IST Cache  
• MERS

**Alaska:** Nenana Ridge Complex, Himalaya Road

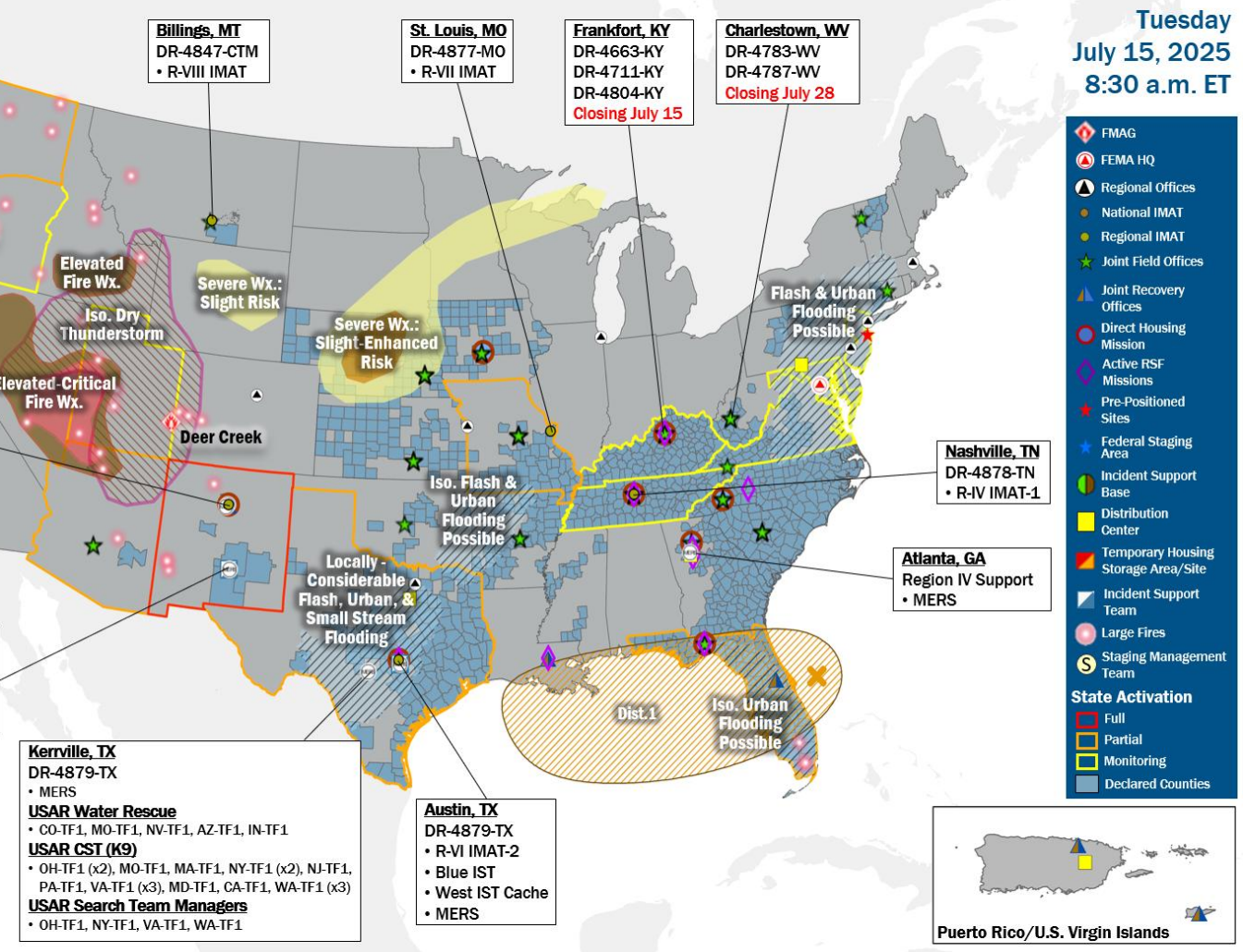
**Commonwealth of Northern Mariana Islands:** [Map]

**Guam:** [Map]

**Hawaii:** [Map]

**American Samoa:** [Map]

**Puerto Rico/U.S. Virgin Islands:** [Map]



- FMAG
- FEMA HQ
- Regional Offices
- National IMAT
- Regional IMAT
- Joint Field Offices
- Joint Recovery Offices
- Direct Housing Mission
- Active RSF Missions
- Pre-Positioned Sites
- Federal Staging Area
- Incident Support Base
- Distribution Center
- Temporary Housing Storage Area/Site
- Incident Support Team
- Large Fires
- Staging Management Team
- State Activation**
- Full
- Partial
- Monitoring
- Declared Counties

## IM Workforce

12,277 (-11) Assigned  
4,485 (-26) Unavailable  
5,906 (-29) Deployed

---

15% / 1,875 (+44) Available

## IM Cadre Availability

Alternative Dispute Resolution: 16% (5/31); Civil Rights: 21% (31/145); Disaster Field Training Operations: 19% (13/69); Disability Integration: 25% (7/28); Disaster Survivor Assistance: 17% (191/1,094); External Affairs: 9% (30/330); Environmental Planning and Historic Preservation: 8% (57/707); Field Leadership: 6% (8/126); Financial Management: 16% (31/190); Hazard Mitigation: 5% (40/830); Human Resources: 15% (25/166); Individual Assistance: 14% (341/2,439); Interagency Recovery Coordination: 23% (57/247); Information Technology: 14% (90/627); Logistics: 19% (292/1,562); Operations: 9% (34/372); Public Assistance: 12% (253/2,105); Planning: 7% (27/382); Safety: 12% (11/93); Security: 23% (26/112)

20 Cadres ≤ 25% Availability

**MERS**  
≥ 66%

33 Assigned  
3 Unavailable  
6 (+1) Deployed

---

24 (-1) Available

**US&R**  
33-65%

28 Assigned  
6 Unavailable  
6 Deployed

---

16 Available

**FCO**  
≤ 1 Type I

40 Assigned  
0 Unavailable  
37 (20 FCO) Deployed

---

3 Available

# Joint Preliminary Damage Assessments

Region	State / Location	Incident	IA	Number of Counties		Start - End
			PA	Requested	Complete	
IV	NC	Tropical Storm Chantal Jul 6	IA	1	0	7/15 - TBD
			PA	0	0	N/A
V	LLBO*	Severe Thunderstorms Jun 21	IA	1	0	7/15 - TBD
			PA	1	0	7/15 - TBD
VII	KS	Severe Storms & Flooding Jun 14	IA	0	0	N/A
			PA	16	0	6/30 - TBD
VIII	SWO**	Severe Storms and Flooding Jun 12-17	IA	1	0	7/14 - TBD
			PA	1	0	7/14 - TBD
	ND	Tornadoes and Severe Storms Jun 20-21	IA	0	0	N/A
			PA	17	0	TBD - TBD

\*Leech Lake Band of Ojibwe, \*\*Sisseton-Wahpeton Oyate



**FEMA**

National Watch Center

# Declaration Requests in Process – 12

State / Tribe / Territory – Incident Description	Type	IA	PA	HM	Requested
MI – Severe Winter Storm	DR	X	X	X	May 16
OR – Severe Storms, Flooding , Landslides, Mudslides	DR	X	X	X	May 19
IN – Severe Storms, Straight-line Winds, Tornadoes, and Flooding	DR	X	X	X	May 28
KY – Severe Winter Storm (Appeal)	DR		X	X	Jun 4
MD – Severe Storms and Flooding	DR		X	X	Jun 11
KS – Severe Storms, Straight-line Winds, Tornadoes, and Flooding	DR		X	X	Jun 17
WV – Severe Storms, Straight-line Winds, Landslides, and Flooding	EM		X		Jun 20
WV – Severe Storms, Straight-line Winds, Landslides, and Flooding	DR	X		X	Jun 20
MO – Severe Storms and Flooding	DR		X	X	Jun 21
RST* – Severe Storms, Straight-line Winds, and a Tornado	DR	X	X	X	Jun 26
RRPIC** – Flooding, Fire Hazard, and Hazardous Material Contamination	EM		X		Jun 24
OK – Severe Storms, Tornadoes, Straight-line Winds, and Flooding	DR		X	X	Jul 2

*\*Rosebud Sioux Tribe, \*\* Robinson Rancheria of Pomo Indians of California*



**FEMA**



# FEMA

Helping people before, during, and after disasters.



*Scan to subscribe to this briefing.*