

FEMA National Watch Center

# Daily Operations Briefing

Sunday, July 13, 2025

8:30 a.m. ET



**FEMA**

# National Current Ops / Monitoring

---

## New Significant Incidents / Ongoing Ops

- Flash Flooding – Texas / New Mexico

## Hazard Monitoring

- Heavy Rain / Flash Flooding – Southern Rockies, Southern Plains, Lower / Middle Mississippi Valley, Mid-Atlantic to Northeast

## Disaster Declaration Activity

- Approved: FMAG – Deer Creek Fire – UT
- Approved: FMAG – Highland Fire – OR

## Event Monitoring

- No new significant events



**FEMA**

# Flash Flooding – Texas / New Mexico



**Situation:** Several Flash Flood Warnings have been issued across central Texas to include Texas Hill Country and Colorado Bend State Park. Surrounding areas are expected to experience slow-moving showers and storms with heavy rainfall. Widespread rainfall amounts between 2 to 6 inches have already fallen this morning, with additional rainfall expected over already saturated areas. Minor to isolated moderate river flooding is ongoing or forecast to occur. In New Mexico there is a high risk of burn scar flash flooding, with large hail and damaging wind gusts possible in central and eastern areas. Gusty winds and heavy rainfall could lead to localized flooding, especially in urban areas and regions with saturated soils.

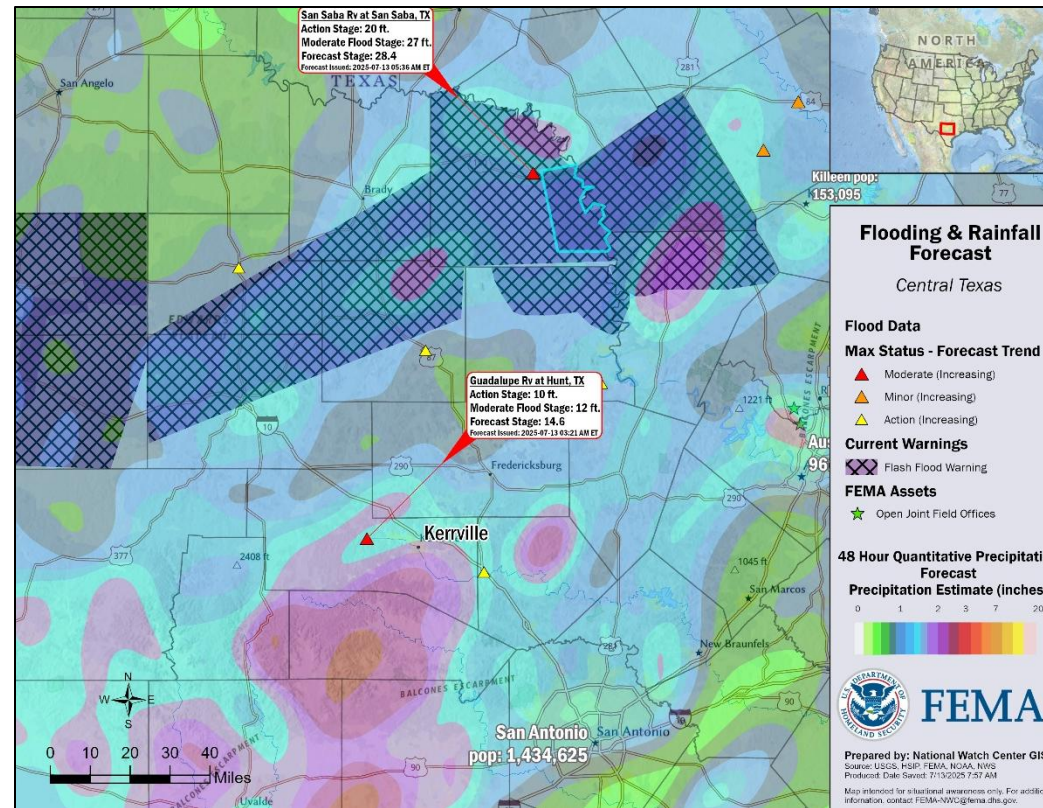
**Lifeline Impacts:** (FEMA RVI SLB as of 5:00 p.m. ET, Jul 12)

**Safety & Security:**

- TX: (as of 8:04 a.m. ET, Jul 10)
  - Approximately 1,500 rescues reported statewide; 161 people reported missing
  - State US&R continue searching for missing and identifying debris that has been searched and ready for removal. Federal US&R resources remain deployed
- NM: Local/state search and rescue ongoing, federal US&R team on site

**Food, Hydration, Shelter:** (ARC Shelter Report, as of 6:47 a.m. ET, Jul 13)

- TX:
  - 7 (+4) ARC shelters open / 229 (+33) occupants
  - 1 Family reunification center is open in Kerrville
  - VOADs feeding operations ongoing
- NM:
  - 6 (+5) ARC shelter open / 99 (+89) occupants
  - 1 Family reunification center is open in Ruidoso
  - American Red Cross continues feeding services



**Health & Medical:**

- TX: (FEMA Region VI Update, as of 10:00 a.m. ET, Jul 11)
  - 123 fatalities statewide
  - 98 fatalities in Kerr County, TX
- NM: 4 (+1) confirmed fatalities / 3 persons reported missing

**Water Systems:** Water restoration efforts are ongoing; no change to status since last report

- TX:
  - 4 (-4) drinking water systems under boil notices
- NM:
  - 4 water systems down; 3 issued boil water advisories

**Transportation:** Decreasing impacts to state-maintained roads

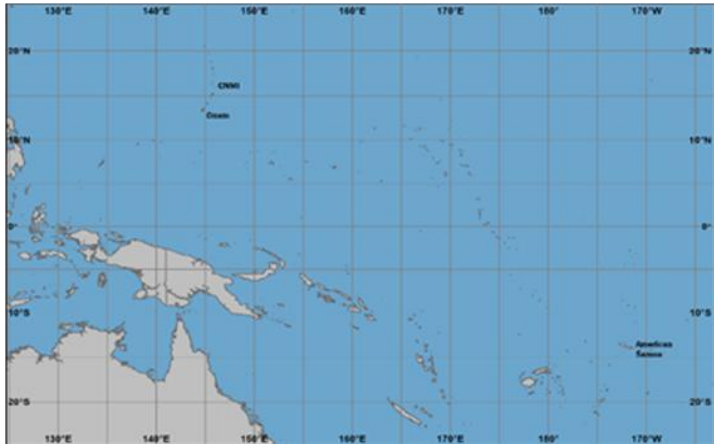
- TX:
  - 12 state-maintained roads are closed due to damage
- NM:
  - 1 bridge washed out; 3 (+1) additional areas undergoing debris cleanup





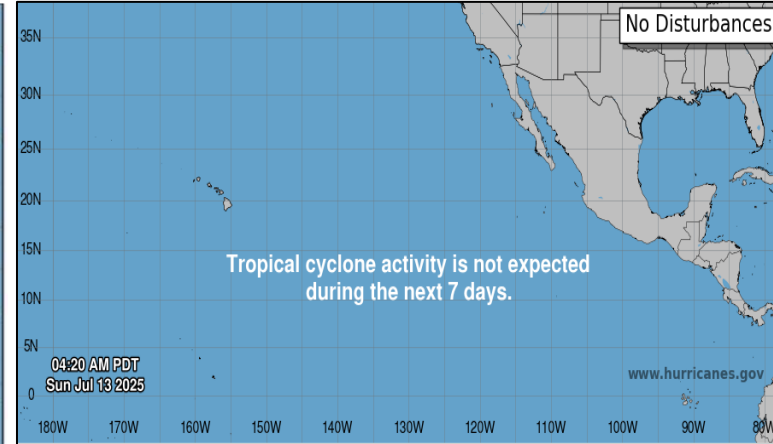
# Tropical Outlook

## Western Pacific



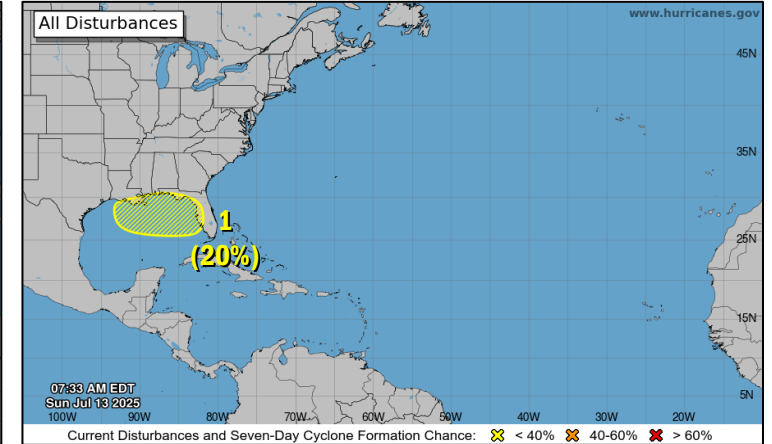
- No tropical cyclones threatening the U.S. territories

## Central and Eastern Pacific



- No tropical cyclones expected during the next 7 days

## Atlantic



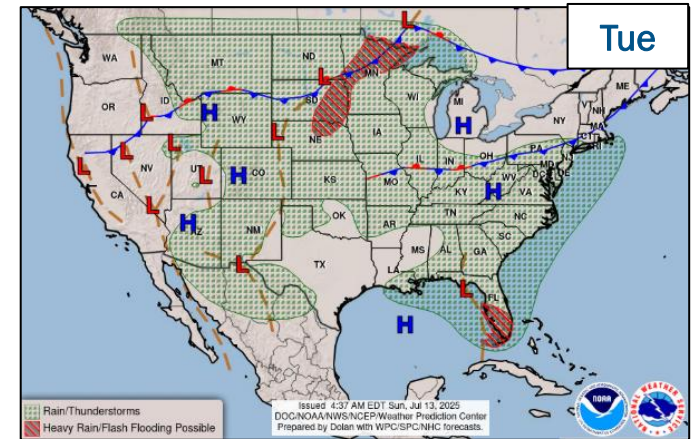
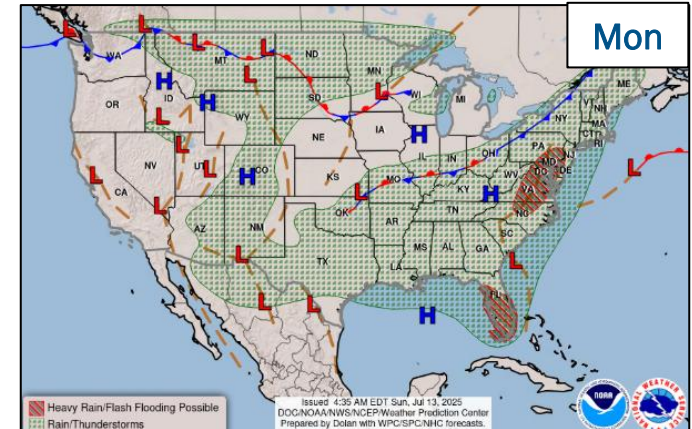
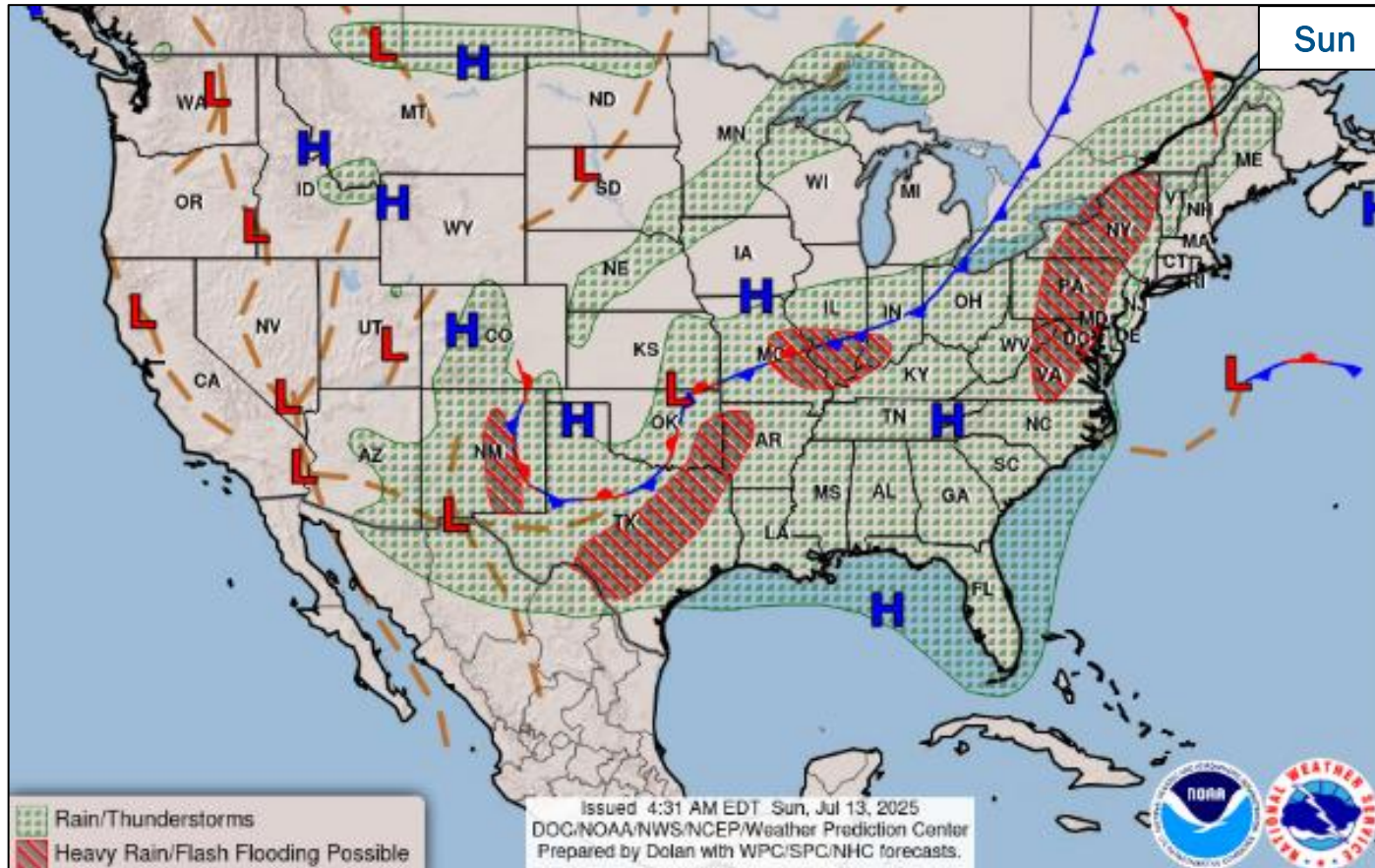
### Disturbance 1: (as of 8:00 a.m. ET)

- Located near Southeastern U.S.
- Environmental conditions could support some gradual development of this system during the middle to late part of this week while it moves westward over the northeastern and north-central portions of the Gulf coast
- Formation chance – 48-hours: near Low (near 0%); 7-days: Low (20%)



FEMA

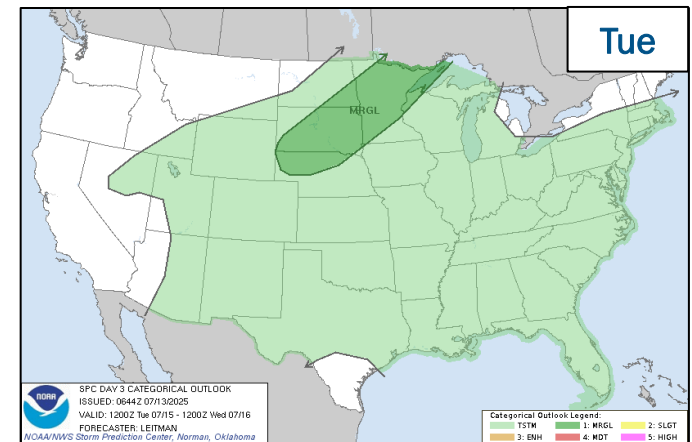
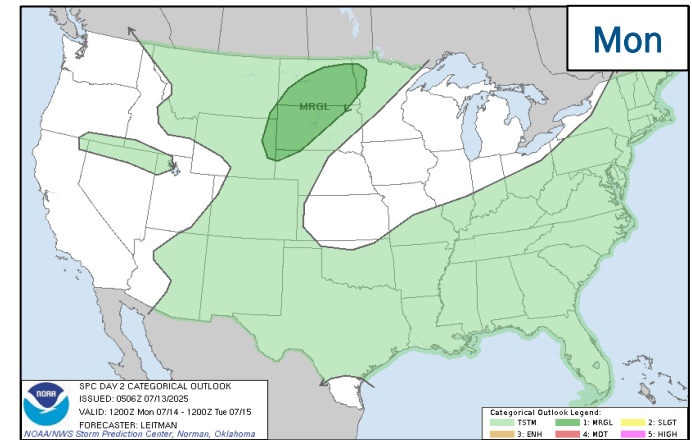
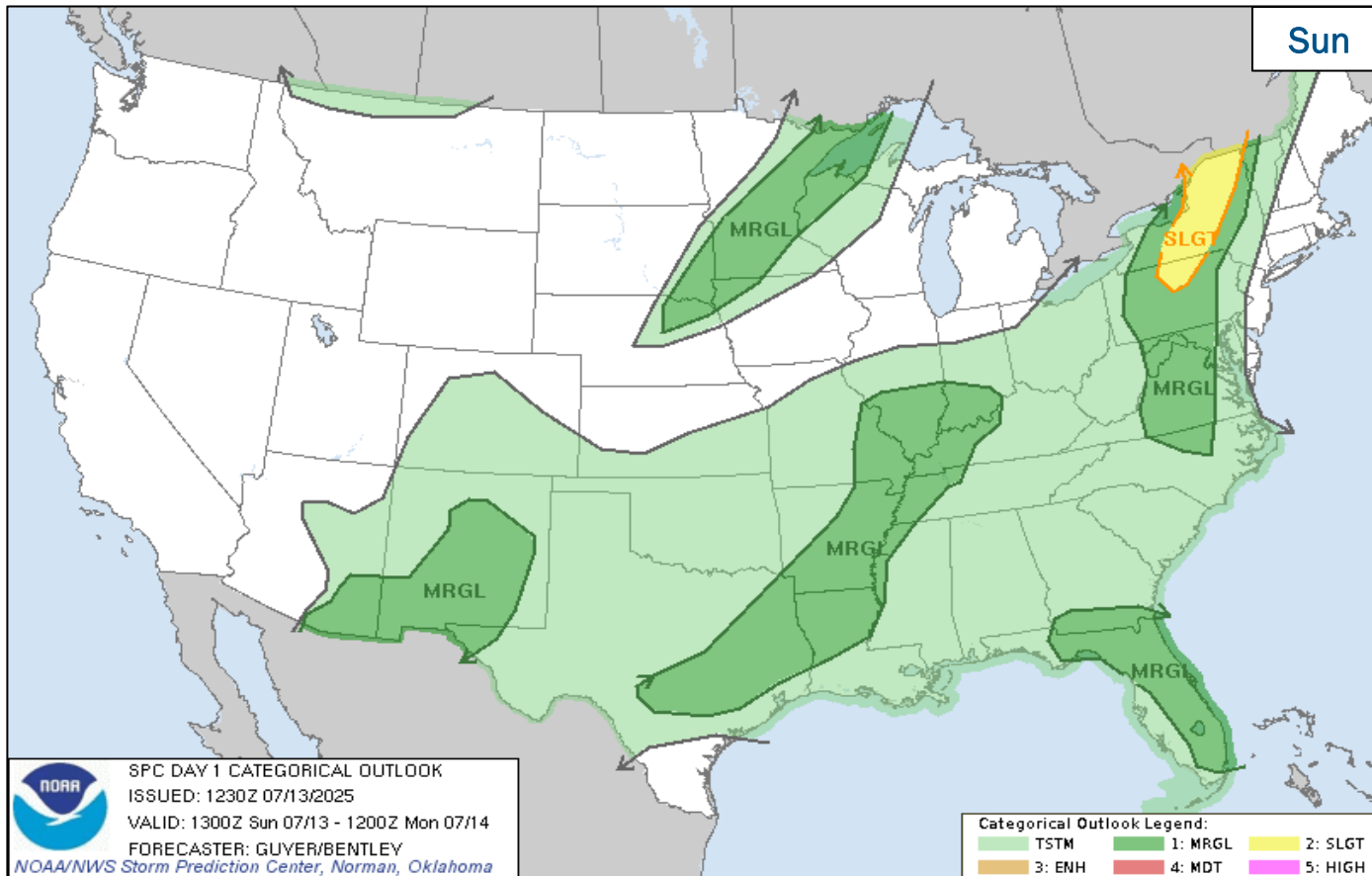
# National Weather Forecast



FEMA

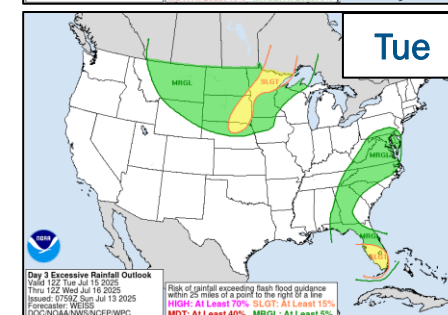
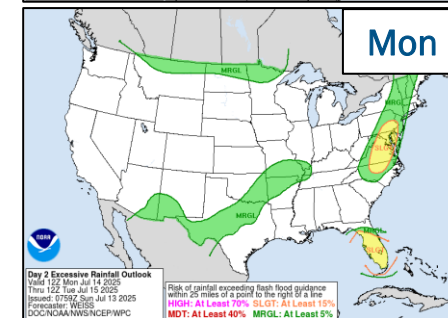
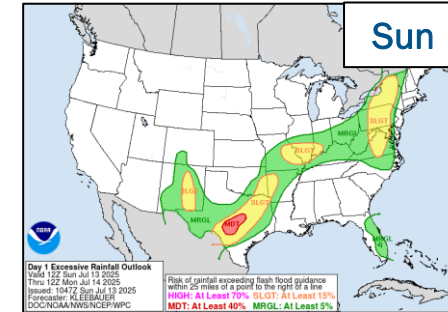
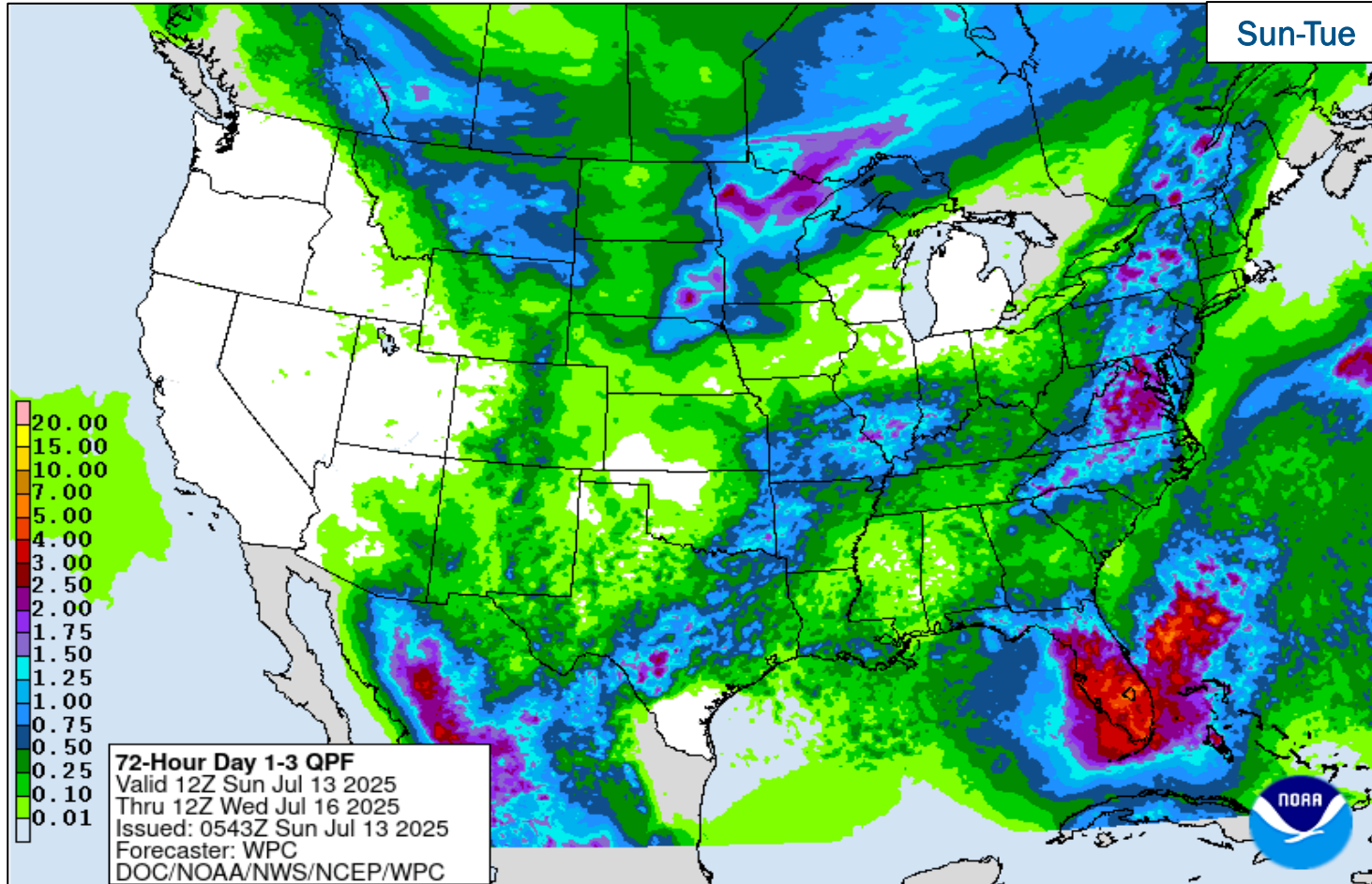
National Watch Center

# Severe Weather Outlook



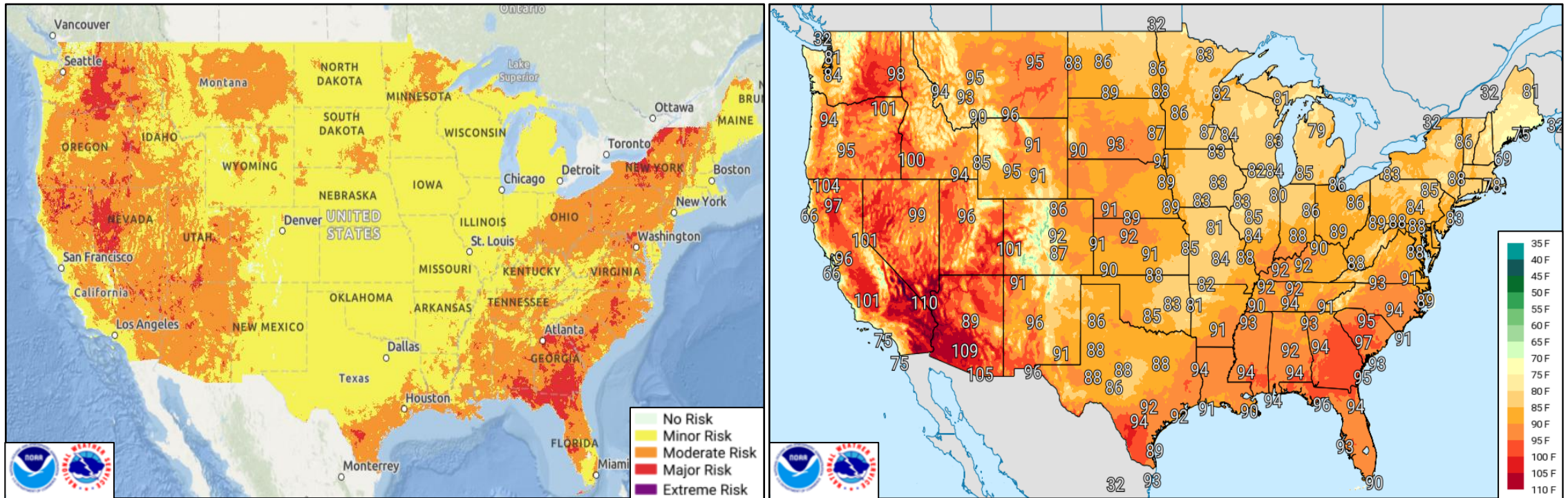
FEMA

# Precipitation & Excessive Rainfall



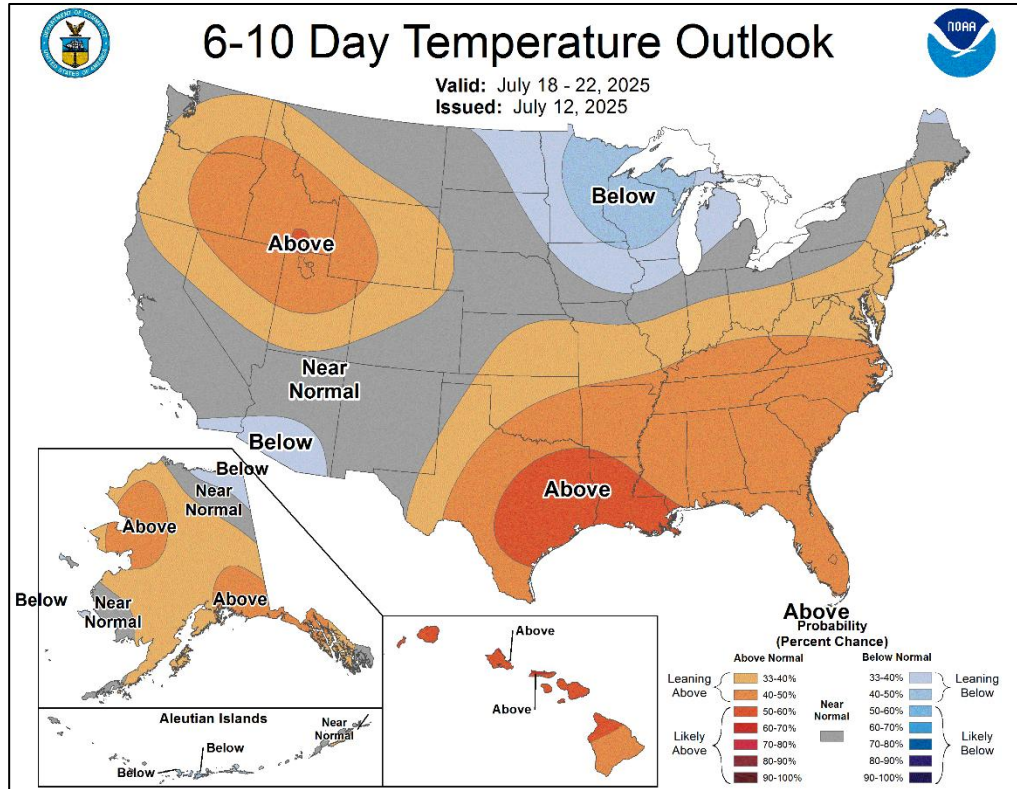
FEMA

# Heat Risk – Jul 13

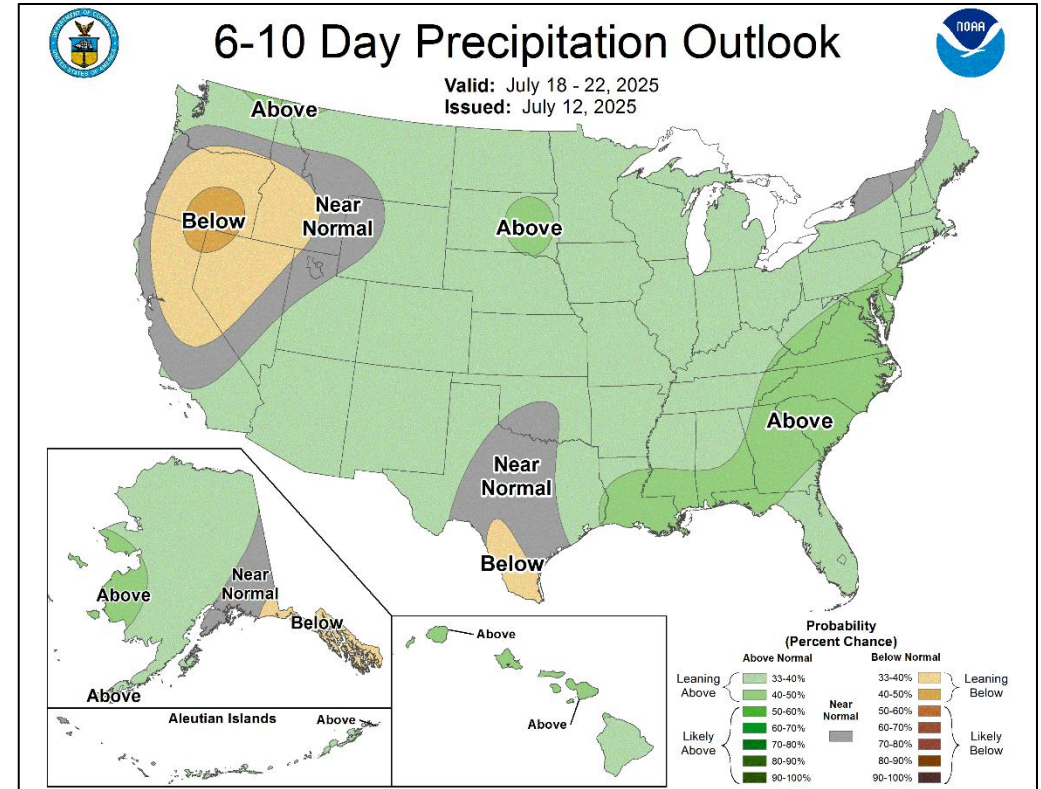


FEMA

# Long Range Outlooks – Jul 18-22



6-10 Day Temperature Probability



6-10 Day Precipitation Probability



FEMA

# National Fire Activity *(as of Jul 13)*

## National Preparedness Level

**PL 4**

Initial Attack Activity <i>(24-hour period)</i>	Light <i>(126 fires)</i>	
New Large Fires	7	
Large Fires Contained	5	
Uncontained Large Fires	34	
Year-to-Date Acres Burned	2,422,024	
Total Responders	12,610	
Type 1 IMTs Deployed	0	
Complex IMTs Deployed	15	

### Preparedness Levels Legend

PL 1	Minimal fire activity; many resources available
PL 2	Large wildland fires burning throughout country; resources mobilized from other areas
PL 3	Wildfire activity ongoing throughout 25% of country; National Interagency Coordination Center (NICC) sets priorities, allocates resources, and mobilizes assets at national level
PL 4	High levels of fire activity and areas are competing for firefighting resources; 60% of the nation's wildland firefighting resources committed
PL 5	Extremely high levels of fire activity; 80% of nation's firefighting resources committed

# Deer Creek Fire – Utah

Fire Name (County, ST)	FMAG #	Acres Burned	Percent Contained	Evacuations	Structures (Homes / Other)			Fatalities / Injuries
					Threatened	Damaged	Destroyed	
Deer Creek (San Juan, UT)	XXXX-FM-UT	7,500	0%	M: 400	H: 140	H: 0	H: 10	0 / 0
				V: 50	O: 600	O: 0	O: 0	

## Situation:

The FEMA Region VIII Regional Administrator has approved a Fire Management Assistance Grant (FMAG) request for the Deer Creek Fire. The Deer Creek Fire is burning in San Juan County, UT, approximately 5 miles east/northeast of La Sal, Utah (est. pop. 400). At the time of the request, the fire has burned approximately 7,500 acres with 0% containment and is burning on state and private land. Power lines, transformers, and homes have been reported destroyed. There are no reports of injuries or fatalities. There are no further requests for FEMA/Federal assistance.

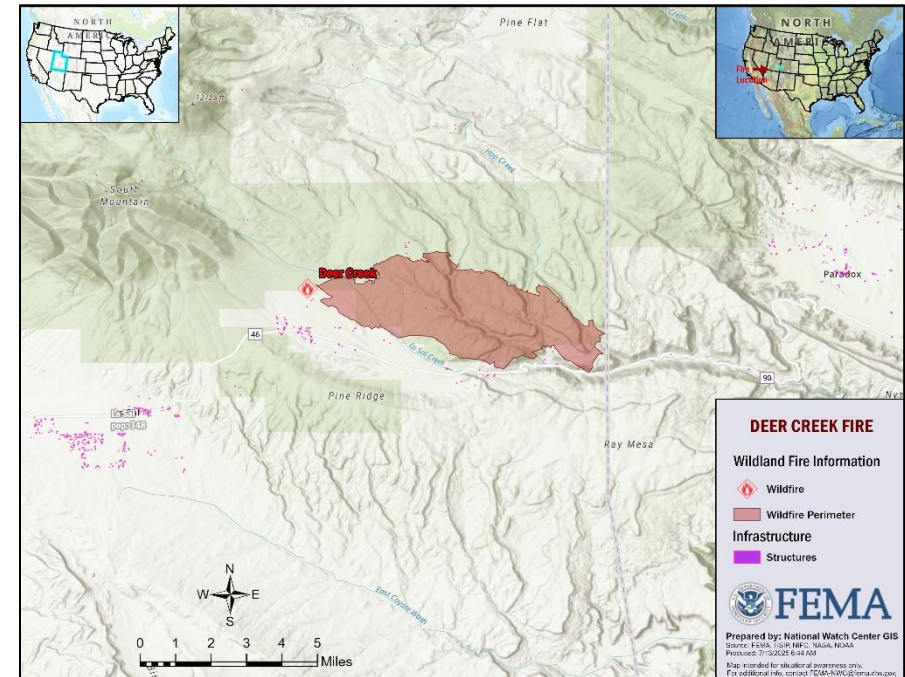
## State / Local Response:

- UT SEOC at Monitoring (Wildfires)

## FEMA / Federal Response:

- Denver MOC is Monitoring; RRCC is Rostered
- NWC is Monitoring; NRCC is Rostered

Reporting will continue in the FEMA Daily Operations Briefing (8:30 a.m. ET) and the twice daily FEMA National Situation Report (5:00 p.m. / 3:00 a.m. ET).



**FEMA**

# Highland Fire – Oregon

Fire Name (County, ST)	FMAG #	Acres Burned	Percent Contained	Evacuations	Structures (Homes / Other)			Fatalities / Injuries
					Threatened	Damaged	Destroyed	
Highland (Crook, OR)	XXXX-FM-OR	1,200	0%	M: 240	H: 222	H: 0	H: 0	0 / 0
				V: 0	O: 0	O: 0	O: 0	

**Situation:** The Acting FEMA Region X Regional Administrator has approved a Fire Management Assistance Grant (FMAG) request for the Highland Fire. The fire is burning on federal and private land near the city of Prineville (pop. 12k). The fire has burned approximately 1,200 acres with 0% containment. The community of Prineville Lake Acres (pop. 1,556) has been primarily impacted by the fire. An evacuation shelter has been established at Eastside Church in Prineville. There are no further requests for FEMA assistance.

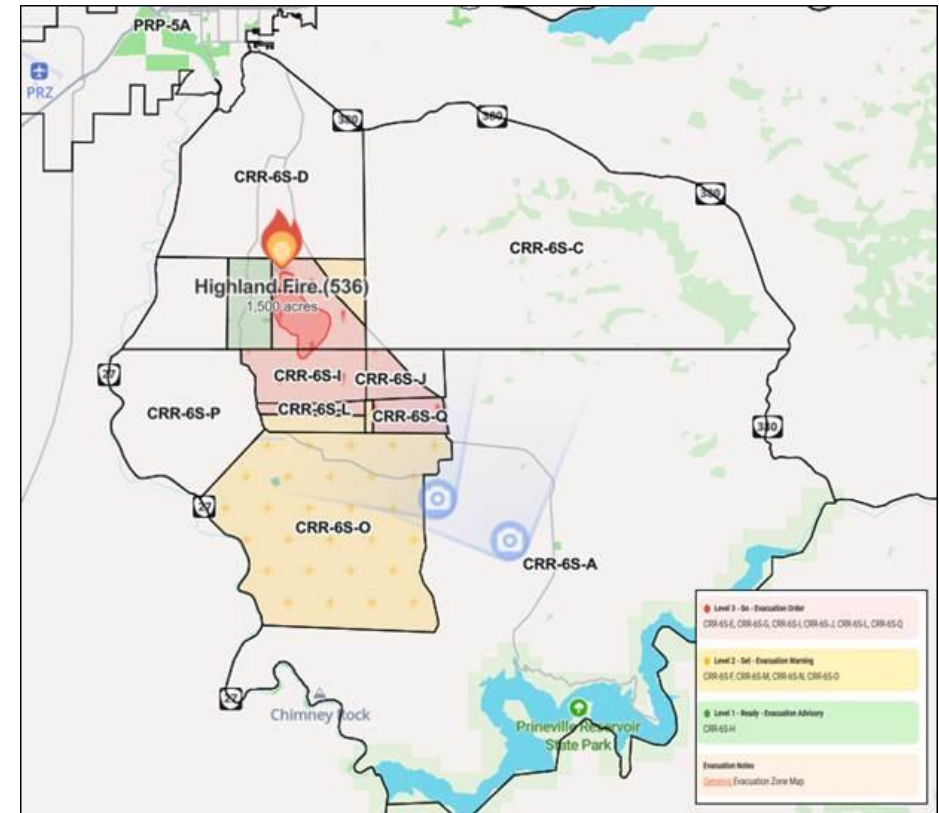
**State / Local Response:**

- OR SEOC at Monitoring (Wildfires)

**FEMA / Federal Response:**

- Bothell MOC is Monitoring; RRCC is Rostered
- NWC is Monitoring; NRCC is Rostered

Reporting will continue in the FEMA Daily Operations Briefing (8:30 a.m. ET) and the twice daily FEMA National Situation Report (5:00 p.m. / 3:00 a.m. ET).



National Watch Center



FEMA

# Wildfire Summary

Fire Name (County, ST)	FMAG #	Acres Burned	Percent Contained	Evacuations	Structures (Homes / Other)			Fatalities / Injuries
					Threatened	Damaged	Destroyed	
Bear Creek (Denali Borough, AK)	5595-FM-AK	30,988	23%	M: 81	H: 0	H: 0	H: 26	0 / 8
				V: 0	O: 0	O: 0	O: 30	
Himalaya Road (Fairbanks North Star Borough, AK)	5596-FM-AK	6,085	12% (+12)	M: LIFTED*	H: 200	H: 0	H: 0	0 / 2
				V: 0	O: 0	O: 1	O: 0	
Nenana Ridge Complex (Fairbanks North Star, AK)	5597-FM-AK	32,933 (+218)	0%	M: 10	H: 78	H: 0	H: 1	0 / 0
				V: 0	O: 49	O: 0	O: 1	

(Evacuations: M = Mandatory / V = Voluntary; Structures: H = Homes and Mixed Commercial/Residential / O = Non-residential Commercial/Other Minor Structures)

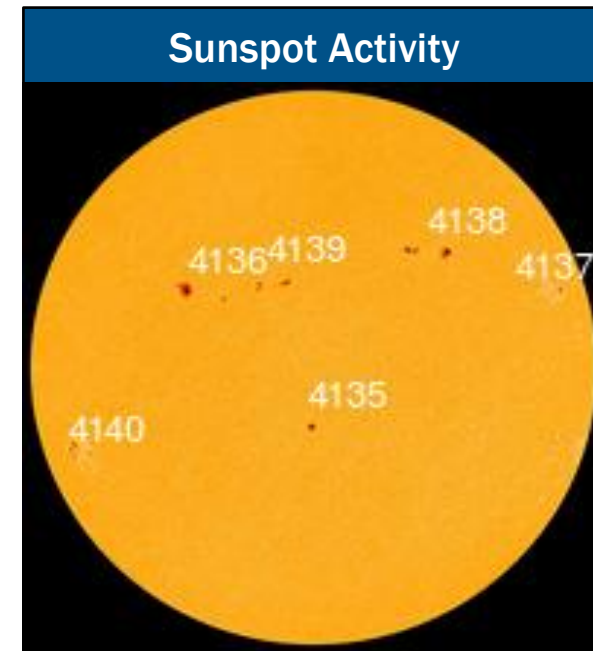
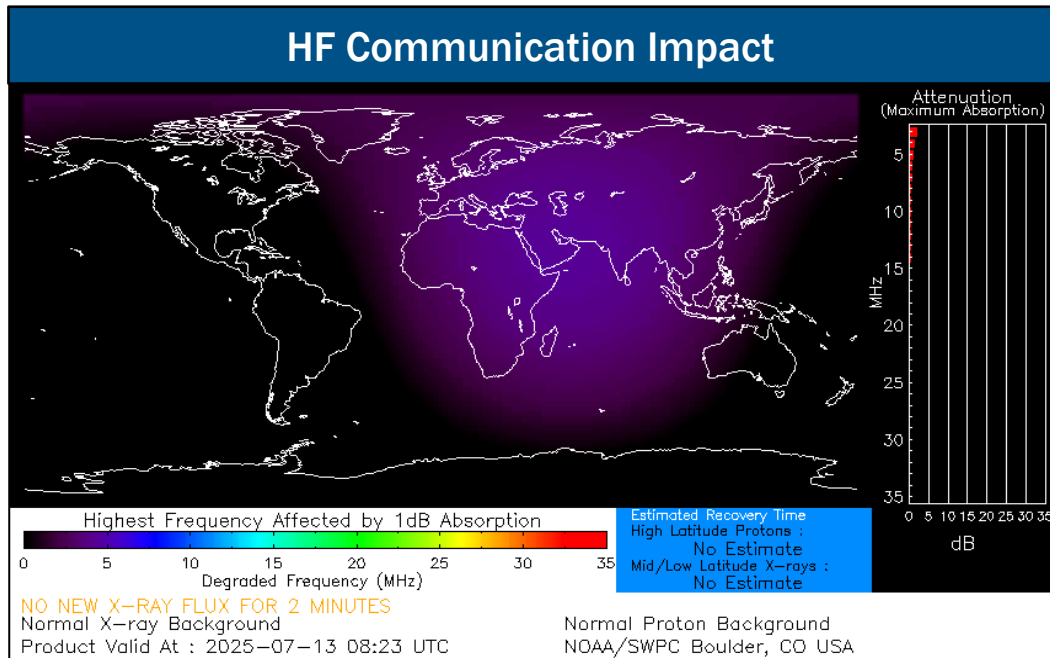


FEMA

# Space Weather Outlook

Minor	Space Weather Activity	Geomagnetic Storms	Solar Radiation	Radio Blackouts
Past 24 Hours	Minor	G1	None	R1
Next 24 Hours	Minor	G1	None	R1

For further information on NOAA Space Weather Scales refer to: <http://www.swpc.noaa.gov/noaa-scales-explanation>  
 For further information on Sunspot Activity refer to: <https://www.swpc.noaa.gov/phenomena/sunspotssolar-cycle>



FEMA

# FEMA Common Operating Picture

**19** Joint Field Offices **Supporting** **69 + 9** Major Disasters Emergency Declarations **10** Direct Housing Missions **14** RSF-Supported Disasters **6** Joint Recovery Offices

Sunday  
July 13, 2025  
8:30 a.m. ET

FEMA HQ	
NWC	NRCC
Monitoring	Steady State
FEMA REGIONS	
Watch	RRCC
Monitoring I	Rostered
Monitoring II	Rostered
Monitoring III	Rostered
Monitoring IV	Rostered
Monitoring V	Rostered
Monitoring VI	Level III
Monitoring VII	Rostered
Monitoring VIII	Rostered
Monitoring IX	Rostered
Monitoring X	Rostered

N-IMATs	
2-5 Teams Available	
Red	
White	
Blue	
Gold	
HS	

R-IMATs	
4-6 Teams Available	
I	
II	2
III	Demobilizing
IV-1	TN (Jun 23)
IV-2	3
V	
VI-1	NM (Jul 9)
VI-2	TX (Jul 6)
VII	MO (Jun 10)
VIII	MT (Jul 6)
IX-1	CA (Jan 8)
IX-2	CA (Jun 30)
X	1

**Notes:**

NRCC/RWCs/RRCCs:  
• RV RWC: Staffing  
• RVI RRCC: Flooding

State EOCs:  
• AK/AZ/HI/OR/UT/WA: Wildfires  
• MO/VA: Severe Weather  
• FL/KY/TN: Previous Incidents  
• MD/NM/TX: Flooding  
• NJ: FIFA Club World Cup Finals

Volunteer Force	
Rostered 7,985	Deployed 3
Surge Capacity Force	
Rostered 8,289 (-200)	Deployed 0

Fully Mission Capable (FMC)  
Partially Mission Capable (PMC)  
Not Mission Capable (NMC)  
Deployed

REGIONAL BREAKDOWN				
	JFO	DR	EM	JRO
I	1	2	0	0
II	0	0	0	2
III	2	8	1	0
IV	6	24	7	1
V	0	0	0	0
VI	3	9	1	3
VII	4	20	0	0
VIII	1	1	0	0
IX	2	5	0	0
X	0	0	0	0

**Oakland, CA**  
DR-4482-CA  
• R-IX IMAT-2

**Santa Fe, NM**  
• R-VI IMAT-1  
• MERS

**Pasadena, CA**  
DR-4856-CA  
• R-IX IMAT-1

**Albuquerque, NM**  
EM-3628-NM  
• Blue IST  
• West IST Cache

**Ruidoso, NM**  
EM-3628-NM  
• MERS  
**USAR**  
• UT-TF1

**Kerrville, TX**  
DR-4879-TX  
• MERS  
**USAR Water Rescue**  
• CO-TF1, MO-TF1, NV-TF1, AZ-TF1, IN-TF1  
**USAR CST (K9)**  
• OH-TF1 (x2), MO-TF1, MA-TF1, NY-TF1 (x2), NJ-TF1, PA-TF1, VA-TF1 (x3), MD-TF1, CA-TF1, WA-TF1 (x3)  
**USAR Search Team Managers**  
• OH-TF1, NY-TF1, VA-TF1, WA-TF1

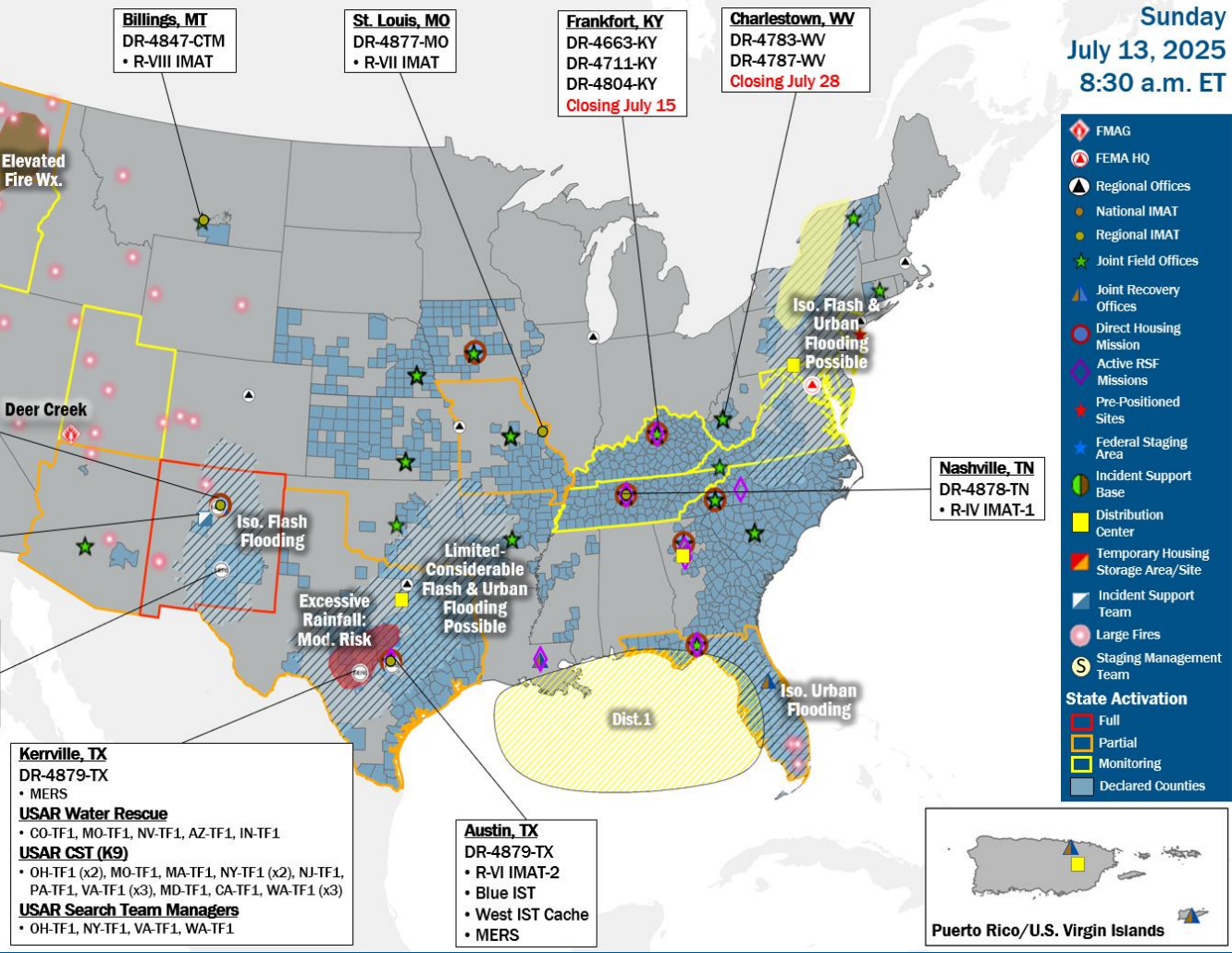
**Alaska**  
Nenana Ridge Complex  
Himalaya Road  
Bear Creek

**Commonwealth of Northern Mariana Islands**

**Guam**

**Hawaii**

**American Samoa**



**Legend:**

- FMAG
- FEMA HQ
- Regional Offices
- National IMAT
- Regional IMAT
- Joint Field Offices
- Joint Recovery Offices
- Direct Housing Mission
- Active RSF Missions
- Pre-Positioned Sites
- Federal Staging Area
- Incident Support Base
- Distribution Center
- Temporary Housing Storage Area/Site
- Incident Support Team
- Staging Management Team
- Large Fires
- State Activation: Full, Partial, Monitoring, Declared Counties

## IM Workforce

12,277 Assigned  
4,504 (-38) Unavailable  
5,998 (+20) Deployed  
14% / 1,775 (+18) Available

## IM Cadre Availability

Alternative Dispute Resolution: 13% (4/31); Civil Rights: 19% (28/145); Disaster Field Training Operations: 16% (11/69); Disability Integration: 25% (7/28); Disaster Survivor Assistance: 17% (187/1,095); External Affairs: 9% (29/330); Environmental Planning and Historic Preservation: 8% (56/707); Field Leadership: 6% (7/126); Financial Management: 18% (34/190); Hazard Mitigation: 7% (55/833); Human Resources: 11% (19/166); Individual Assistance: 12% (296/2,441); Interagency Recovery Coordination: 21% (52/247); Information Technology: 12% (78/628); Logistics: 17% (269/1,562); Operations: 9% (32/372); Public Assistance: 11% (242/2,109); Planning: 7% (26/383); Safety: 11% (10/93); Security: 22% (25/112)

20 Cadres ≤ 25% Availability

**MERS**  
≥ 66%

33 Assigned  
3 Unavailable  
5 Deployed  
25 Available

**US&R**  
33-65%

28 Assigned  
6 Unavailable  
6 Deployed  
16 Available

**FCO**  
≤ 1 Type I

40 Assigned  
0 Unavailable  
37 (20 FCOR) Deployed  
3 Available

# Joint Preliminary Damage Assessments

Region	State / Location	Incident	IA	Number of Counties		Start - End
			PA	Requested	Complete	
IV	NC	Tropical Storm Chantal Jul 6	IA	1	0	7/15 - TBD
			PA	0	0	N/A
V	LLBO*	Severe Thunderstorms Jun 21	IA	1	0	7/15 - TBD
			PA	1	0	7/15 - TBD
VII	KS	Severe Storms & Flooding Jun 14	IA	0	0	N/A
			PA	16	0	6/30 - TBD
VIII	SWO**	Severe Storms and Flooding Jun 12-17	IA	1	0	7/14 - TBD
			PA	1	0	7/14 - TBD
	ND	Tornadoes and Severe Storms Jun 20-21	IA	0	0	N/A
			PA	17	0	TBD - TBD

\*Leech Lake Band of Ojibwe, \*\*Sisseton-Wahpeton Oyate



**FEMA**

National Watch Center

# Declaration Requests in Process – 12

State / Tribe / Territory – Incident Description	Type	IA	PA	HM	Requested
MI – Severe Winter Storm	DR	X	X	X	May 16
OR – Severe Storms, Flooding , Landslides, Mudslides	DR	X	X	X	May 19
IN – Severe Storms, Straight-line Winds, Tornadoes, and Flooding	DR	X	X	X	May 28
KY – Severe Winter Storm (Appeal)	DR		X	X	Jun 4
MD – Severe Storms and Flooding	DR		X	X	Jun 11
KS – Severe Storms, Straight-line Winds, Tornadoes, and Flooding	DR		X	X	Jun 17
WV – Severe Storms, Straight-line Winds, Landslides, and Flooding	EM		X		Jun 20
WV – Severe Storms, Straight-line Winds, Landslides, and Flooding	DR	X		X	Jun 20
MO – Severe Storms and Flooding	DR		X	X	Jun 21
RST* – Severe Storms, Straight-line Winds, and a Tornado	DR	X	X	X	Jun 26
RRPIC** – Flooding, Fire Hazard, and Hazardous Material Contamination	EM		X		Jun 24
OK – Severe Storms, Tornadoes, Straight-line Winds, and Flooding	DR		X	X	Jul 2

*\*Rosebud Sioux Tribe, \*\* Robinson Rancheria of Pomo Indians of California*



**FEMA**



# FEMA

Helping people before, during, and after disasters.



*Scan to subscribe to this briefing.*