

FEMA National Watch Center

Daily Operations Briefing

Monday, June 24, 2024

8:30 a.m. ET



FEMA

National Current Ops / Monitoring

New Significant Incidents / Ongoing Ops

- Wildfires – New Mexico (South Fork and Salt Fires)
- Flooding Threats – FEMA Regions V & VII

Hazard Monitoring

- Severe Weather – Northern and Central Plains to the Great Lakes
- Heavy Rain/Flash Flooding – Southwest

Disaster Declaration Activity

- FMAG Approval: Slide Ranch Fire – WA
- Request: Major Disaster Declaration – IA
- Two amendments issued

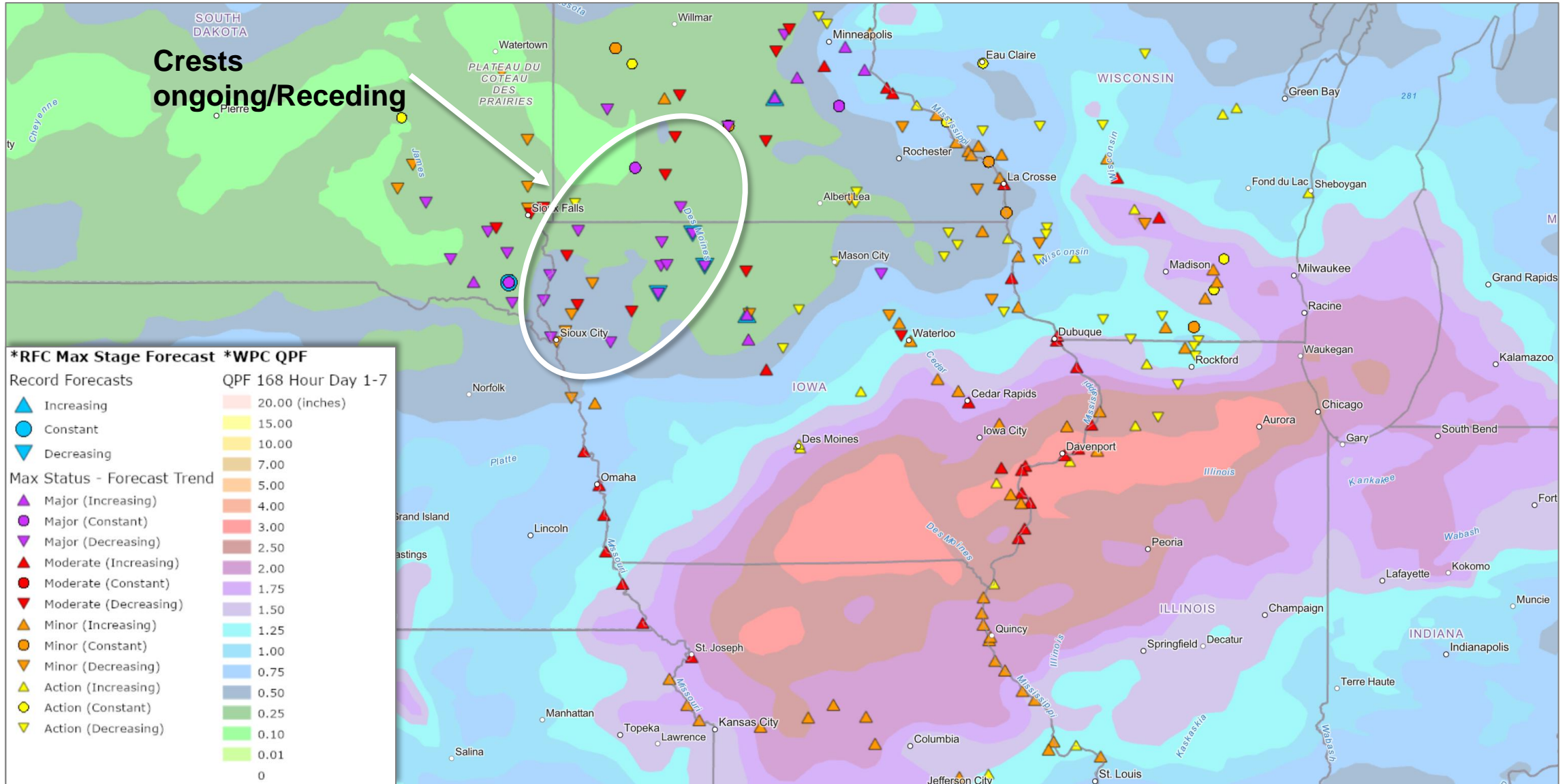
Event Monitoring

- No significant events

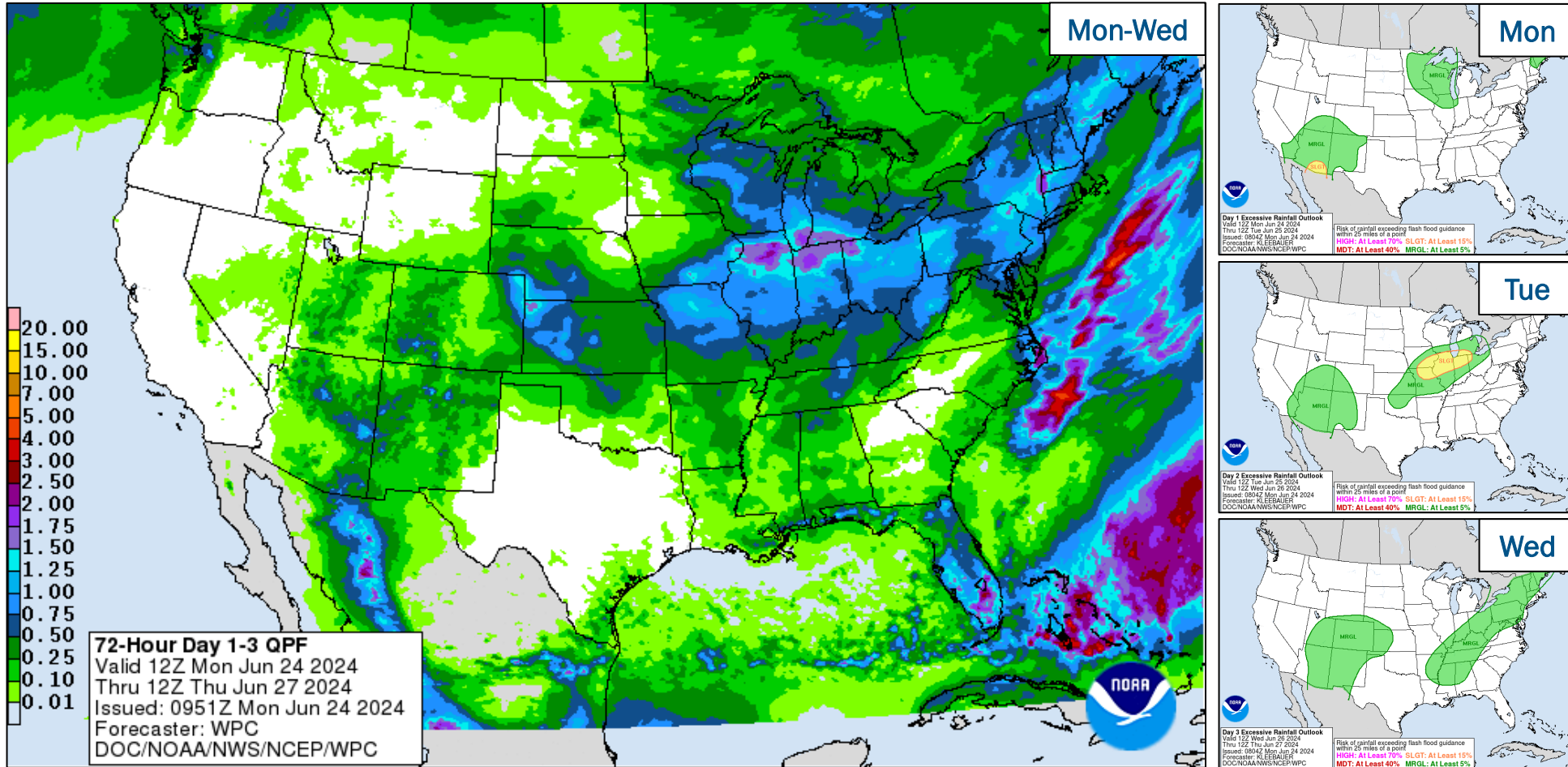


FEMA

RFC River Forecasts / 7-Day Forecast Rainfall



Precipitation & Excessive Rainfall



FEMA

National Watch Center

Flooding Threats – FEMA Regions V & VII

Situation: Between 4 to 8 inches of rain fell over the weekend for portions of the Northern Plains to the Upper Mississippi Valley intensifying ongoing flood conditions impacting over 2,000 properties. 17 river flood gauges have reached record flood levels, and the Split Rock Creek at Jasper and West Fork Des Moines River are forecast to reach record levels over the next couple of days.

Lifelines: (Region V&VII SLB, as of 1:20 a.m. ET, Jun 23)

Safety & Security:

Region VII:

- IA: Over 2,000 properties impacted by flooding with estimated 1,611 residential properties inundated with flood waters
 - Major/Destroyed – 367
 - Minor – 1,244
 - Affected – 391
- IA: Iowa USAR-1 conducted search and rescue missions June 22-23 in flood-inundated areas
 - Water rescues reported in 3 Counties (Clay, Sioux, and O'Brien)
- IA: Evacuations reported in 6 counties
 - 400 evacuations in Sioux County
 - 370 evacuations in Clay County

Food, Hydration, & Shelter: (ARC Report, as of 6:52 a.m. ET, Jun 24)

Region V:

- MN:
 - 3 ARC shelters open/ 0 occupants

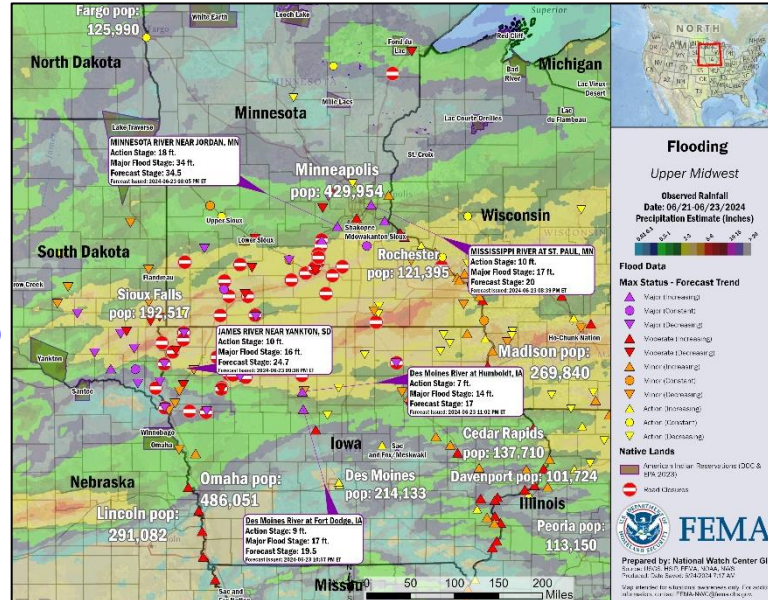
Region VII:

- IA:
 - 9 (+6) Red Cross Shelters Open / 478 (-36) occupants
 - Iowa Department of Natural Resources reporting 10 water systems and 21 wastewater systems affected by flooding

Energy: (Eagle-I, as of 6:52 a.m. ET, Jun 24)

Regions V & VII

- Minimal power outages reported



Transportation:

Region V:

- MN:
 - Multiple roads remain closed (local and county) due to high water/flooding
 - Culvert failures and wash outs and road debris reported across several counties

Region VII:

- IA:
 - IA-12 is blocked by flooding northwest of Sioux City, IA
 - US 20 east of Sioux City is flooded and requiring a long detour (40 miles)
 - Iowa DOT strongly discourages travel in: Lyon, Sioux, O'Brien, Clay, Emmet, Dickinson, Cherokee, and Plymouth Counties

State / Local Response: (Region V&VII SLB, as of 1:20 a.m. ET, Jun 23)

Region V: MN SEOC at Partial Activation (Flooding)

- MN: SEOC at Partial Activation (Flooding)
 - Gov. declared a State of Emergency (authorizing National Guard)

Region VII:

- IA: SEOC at Full Activation (Flooding)
 - Gov issued a disaster proclamation for 22 (+1) counties
 - Gov requested a Major Disaster Declaration for IA
 - National Guard is reporting activation of state National Guard aerial and ground assets (Region VII SPOTREP, as of 1:20 a.m. ET, Jun 24)

FEMA / Federal Response:

FEMA Region V:

- RWC is Monitoring; RRCC is Rostered
- R-IMAT is FMC

Region VII:

- RWC at Enhanced; RRCC is Rostered
- R-IMAT deployed to IA in support of FEMA-DR-4779 and DR-4784

HQ:

- RGO supporting RVII request for Geospatial Damage Assessments



FEMA

National Watch Center

Wildfires – New Mexico (South Fork and Salt Fires) NM



Fire Name (County, ST)	FMAG #	Acres Burned	Percent Contained	Combined Evacuations	Combined Structures (Homes / Other)			Fatalities / Injuries
					Threatened	Damaged	Destroyed	
South Fork (Mescalero Apache Reservation, Otero and Lincoln Counties, NM)	5497-FM-NM	17,551	37% (+6)	M: 8,000 V: 0	H: 10,450 O: 1,000	H: 0 O: 0	H: 600 O: 0	3* / 1
Salt (Mescalero Apache Reservation, Otero and Lincoln Counties, NM)	5498-FM-NM	7,816 (+41)	7%					0 / 1

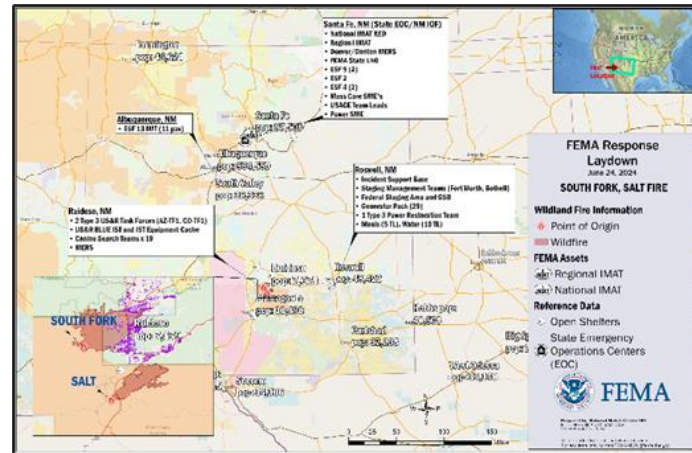
*FEMA RVI RRCC SitAware Phonecon, as of 12:55 p.m. ET, Jun 22

Situation: The South Fork and Salt wildfires persist in New Mexico, posing ongoing threats to homes, businesses, and other structures in the Ruidoso area. Mandatory evacuations remain in effect. This week, thunderstorms are forecasted over the affected areas, potentially causing flash floods and debris flows in burn scar regions.

Lifelines: (Region VI SLB, as of 6:00 p.m. ET, Jun 23)

Safety & Security:

- Law Enforcement/Security:
 - CBP conducting security for SAR
 - NM State Police have discontinued operations at one checkpoint near Hondo
 - 11 person Federal Incident Management Team in Albuquerque, NM
 - Fire Service:
 - One USFS LNO Deployed to NM EOC
 - SWCC added 11 Hotshot Crews and 1 Smoke Jumper Crew
 - Federal Air Assets assisting with fire suppression operations via DOI/DOA aircraft under their own authorities
 - SAR
 - Blue Incident Support Team (IST) coordinating SARIST Equipment Cache with nine (9) personnel (TX-TF1) in Ruidoso, NM
 - 2 Type 3 US&R Teams conducting SAR operations in Ruidoso, NM
 - 19 Canine Search Teams Human Remains Detection (CST-HRD) operating in Ruidoso, NM
 - 2 FEMA US&R Branch IST ESF #9 Group Supervisors – Operational in the SEOC Santa Fe, NM
 - Federal & New Mexico SAR teams are integrated & coordinating with Lincoln County Emergency Manager
 - Evacuations:
 - Chatto Bluff, Apache Summit, Fantasy Lane, homes along Hwy 70, Bear Canyon, and Snow Canyon
 - The Ruidoso EOC has announced they are allowing full-time residents re-entry at 10:00 a.m. ET, Jun 24, but exclusion zones remain inaccessible (Village of Ruidoso, as of Jun 23)
- Food, Hydration, & Shelter:**
- Five (5) trailers of meals arrived as ISB Roswell. (Logistics Reports, as of 4:00 p.m. ET, Jun 23)
 - ARC Shelters: 18 shelters statewide /661 occupants (Region VI SLB, as of 6:00 p.m. ET, Jun 23)



Health & Medical:

- Lincoln County Medical Center (Ruidoso) is open to support fire ground ops
 - Facility is not damaged and should be able to reopen when evacuation order is lifted. Other hospitals in area remain available.
- Fed ESF-8 ASPR in communication with NM State Department of Health providing SME support for DM
- ORT, behavioral health, air quality monitor and water run off monitoring. 5 ESF-8 SMEs - 2 DMORT, 1 behavioral health, 1 CDC, and 1 HHS traveling to NM 6/23 through 6/24.

Energy: (DOE Eagle-I, as of 8:00 p.m. ET, Jun 24)

- NM: Power outages remain minimal statewide and continue to trend downward
- 29 (-1) generators has been deployed; 7 trailers have arrived

Communications:

- All PSAPs in Lincoln and Otero Counties are receiving 911 calls with location information
- 9 (-2) cell sites down in Lincoln & Otero counties
- MERS Support Packages: One (1) arrived and is supporting USAR operations in Ruidoso, second is set to arrive in Roswell tomorrow 06/24. (R6 RRCC RCG Report, as of 3:00 p.m. ET, Jun 23)

Water Systems:

- Drinking water advisory in effect as a precaution (Transportation: (NM 511, as of 12:15 a.m. ET, Jun 23)
- Multiple road closures continue throughout the affected area including State Highway 220 and US Highway 70 with detours available.
- A bridge at Malone RD, Lincoln Co has burned, access to the residences is impacted

State / Local Response: (Region VI SLB, as of 6:00 p.m. ET, Jun 23)

- NM SEOC at Full Activation (Wildfires)
- Gov declared a State of Emergency
- Village of Ruidoso EOC devolved to Lincoln County EOC
- DHSEM deployed SEOC Liaison to Ruidoso/Lincoln County EOC

FEMA / Federal Response: (Region VI SLB, as of 6:00 p.m. ET, Jun 23)

- FEMA Region VI: RWC is Monitoring; RRCC is Level III (Wildfires): w/selected ESFs
- FEMA Region I IMAT deployed to Santa Fe, NM
- SMT Fort Worth/SMT Bothell deployed to Roswell, NM
- Federal Air Assets assisting w/ fire suppression operations
- HQ:
 - NWC is Monitoring
 - National IMAT Red is deployed to New Mexico JRO
 - FEMA-4795-DR-NM approved 6/21
- USAR:
 - Two Type 3 US&R Task Forces (AZ-TF1 & CO-TF1) deployed to Ruidoso, NM
 - 19 (-1) Canine Search Teams – Human Remains Detection (CST-HRD) to Ruidoso, NM
 - Blue Incident Support Team (IST) with 30 personnel and IST Equipment Cache with 9 personnel to Ruidoso, NM
- The NWC will continue to monitor in coordination with FEMA Region VI; updates will be provided in the FEMA National Situation Report and the FEMA Daily Operations Briefing



FEMA

National Watch Center

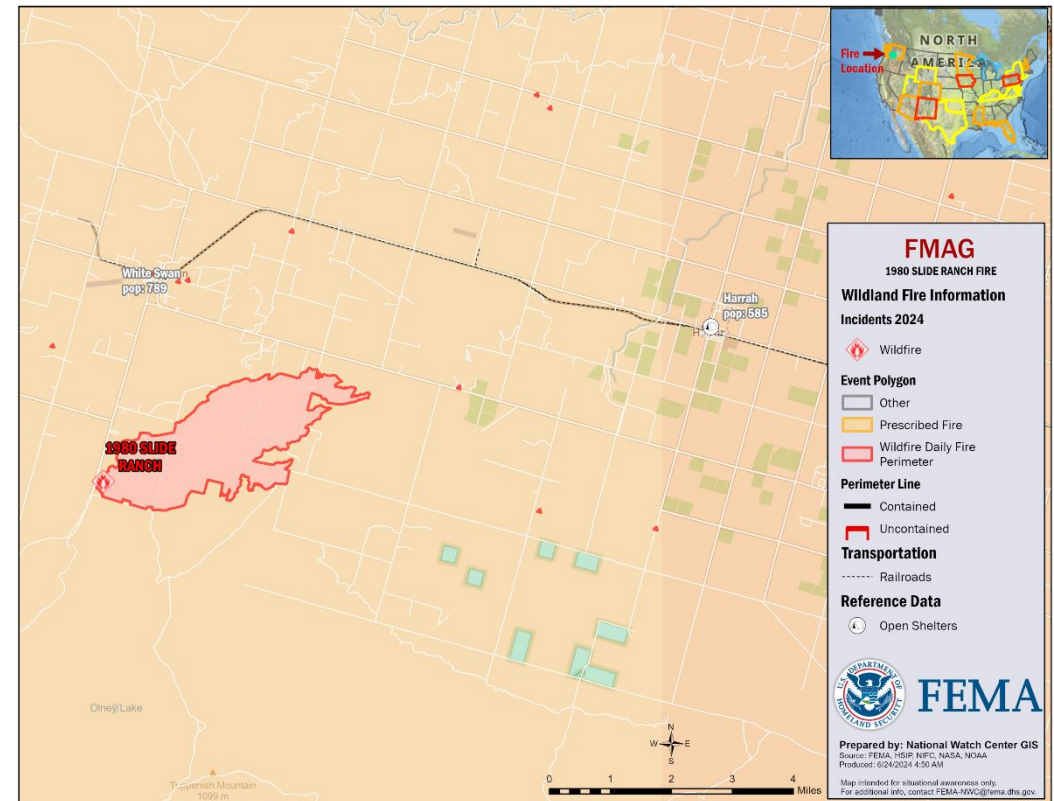
Slide Ranch Fire – Washington

Fire Name (County, ST)	FMAG #	Acres Burned	Percent Contained	Evacuations	Structures (Homes / Other)			Fatalities / Injuries
					Threatened	Damaged	Destroyed	
Slide Ranch (Yakima County, WA)	5499-FM-WA	4,000	0%	M: 300	H: 100	H: 0	H: 7	0 / 0
				V: Unknown	O: 0	O: 0	O: 0	

Situation: The Regional Administrator for FEMA Region X approved a Fire Management Assistance Grant (FMAG) for the Slide Ranch Fire. The fire is burning on tribal land in and around the communities of White Swan and Harrah, WA (total population approx. 1.4k). The fire is also threatening residences in the area in addition to the 17 already destroyed residences. There were 2 other large fires burning uncontrolled within the State, with 5 other smaller fires in proximity.

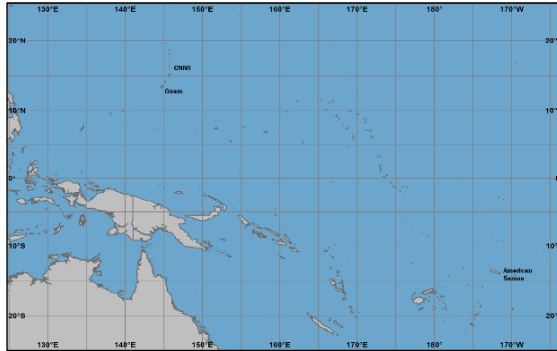
Response:

- FMAG approved Jun 23
- WA SEOC at Partial Activation (Wildfires)
- FEMA RX RWC, Bothell MOC and NWC continue to monitor



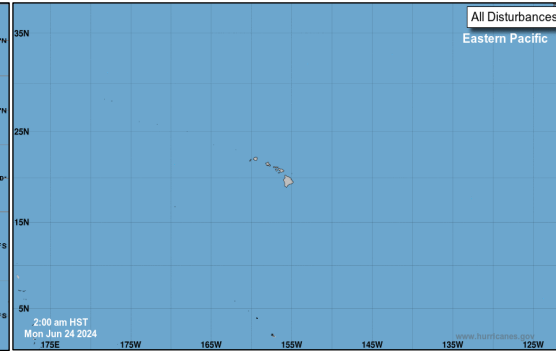
Tropical Outlook

Western Pacific



- No areas of concern for Guam, the Commonwealth of the Northern Mariana Islands or American Samoa

Central Pacific



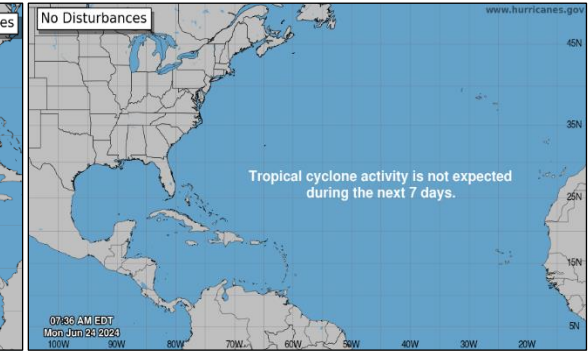
- No tropical cyclones expected during the next 7 days

Eastern Pacific



- No tropical cyclones expected during the next 7 days

Atlantic

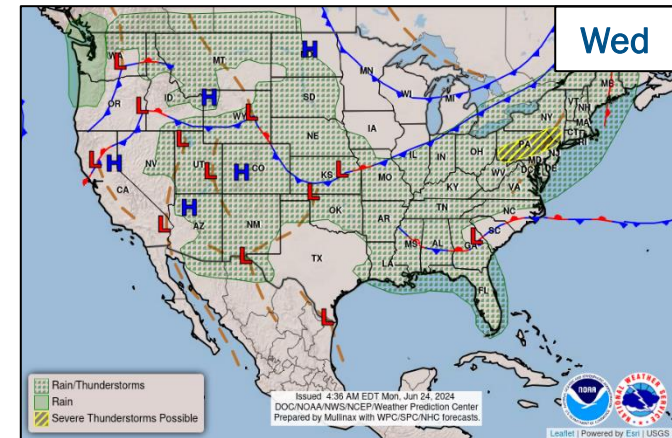
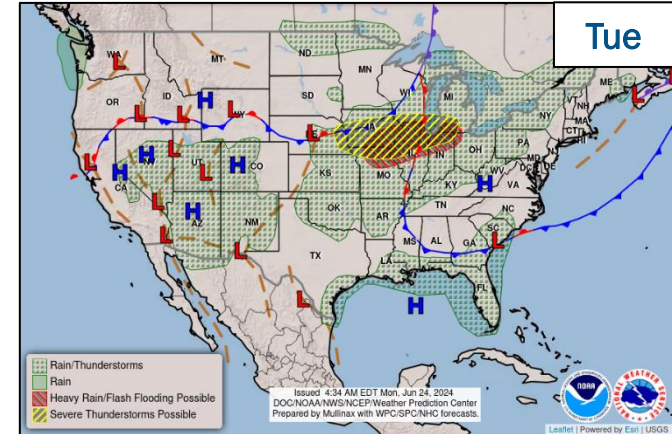
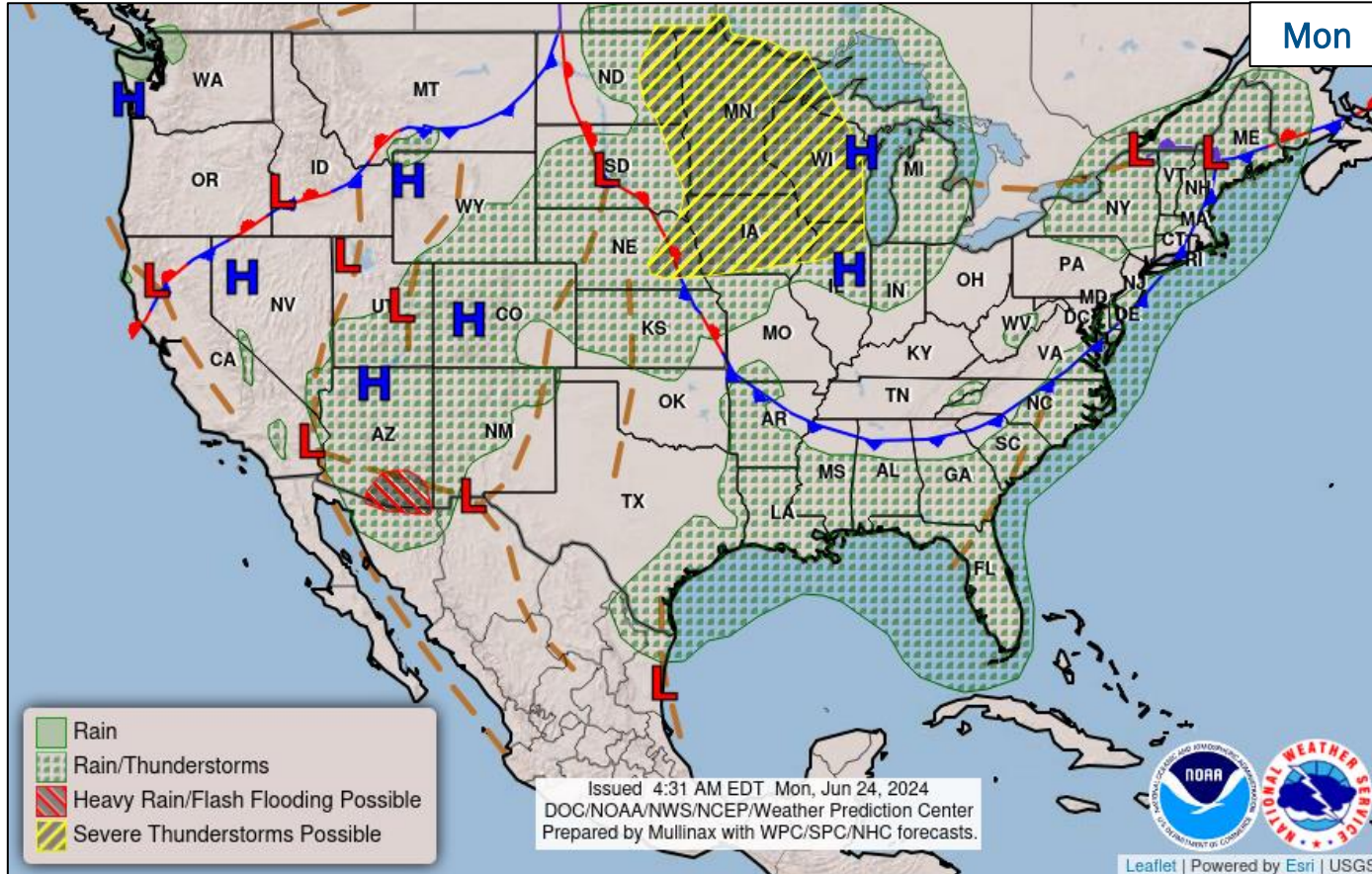


- No tropical cyclones expected during the next 7 days



FEMA

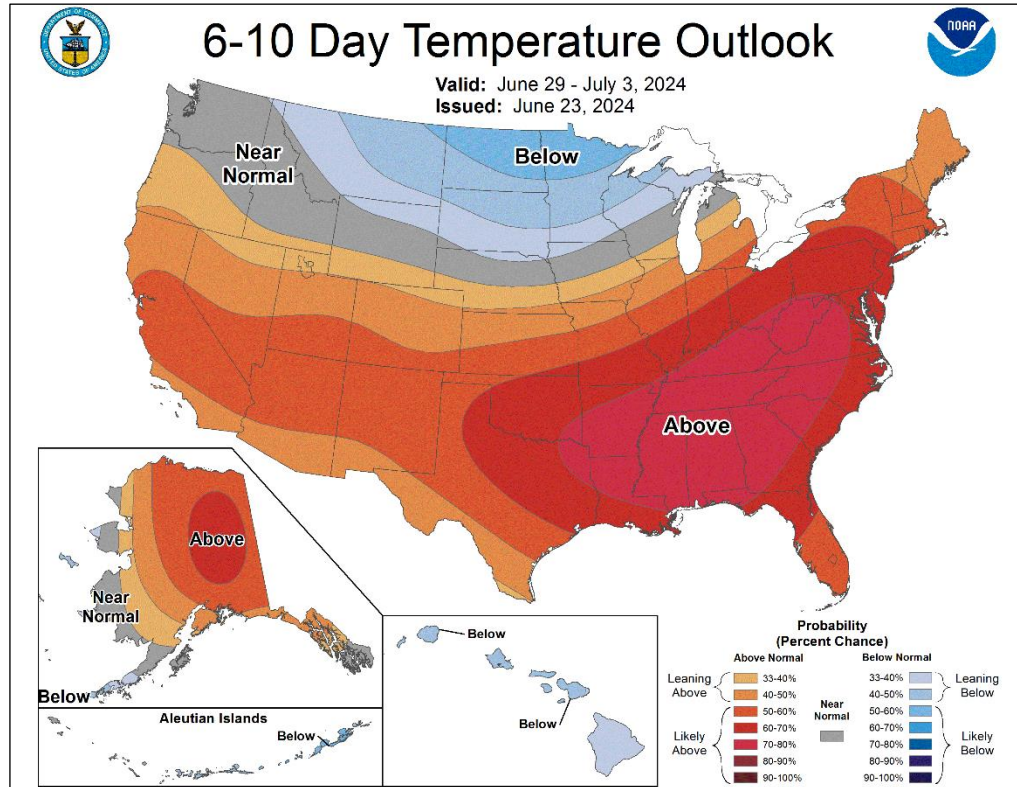
National Weather Forecast



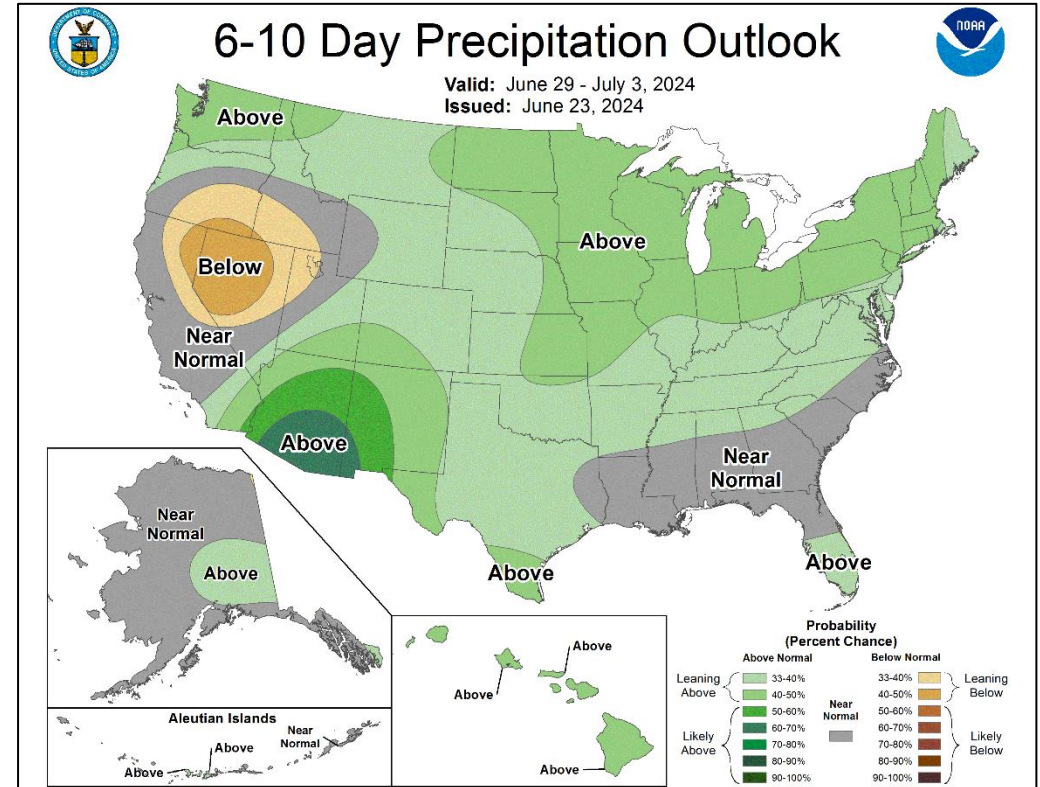
FEMA

National Watch Center

Long Range Outlooks – Jun 29 – Jul 3



6-10 Day Temperature Probability



6-10 Day Precipitation Probability



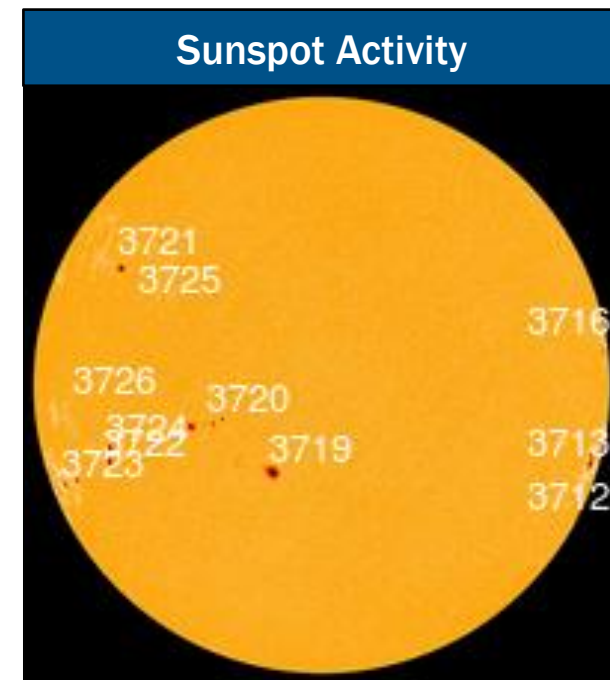
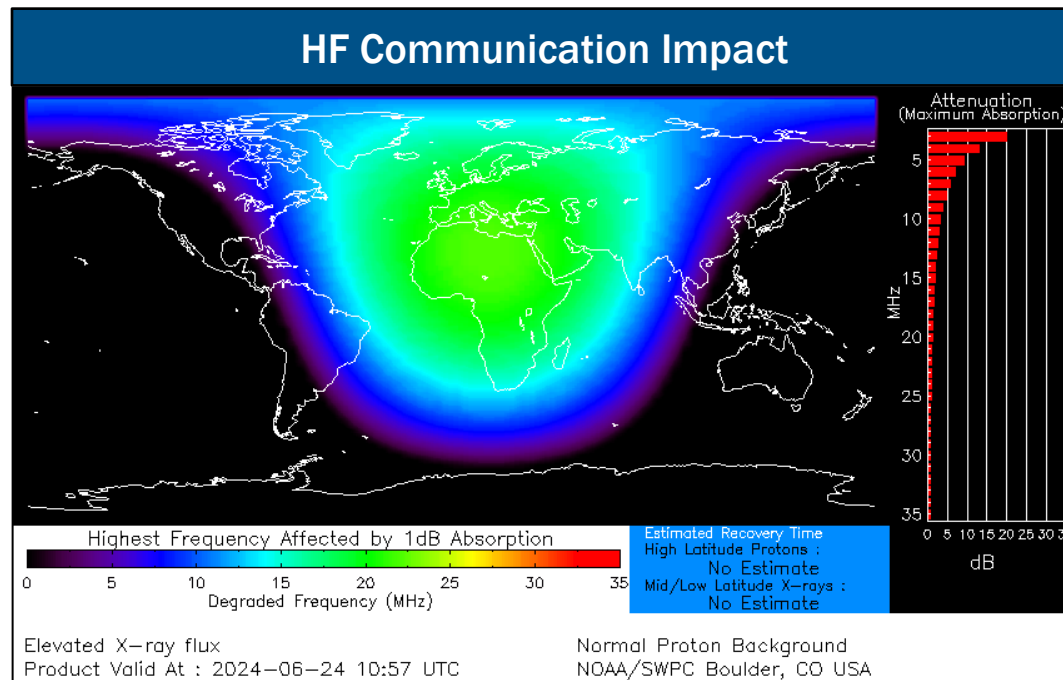
FEMA

National Watch Center

Space Weather Outlook

Minor	Space Weather Activity	Geomagnetic Storms	Solar Radiation	Radio Blackouts
Past 24 Hours	Moderate	None	None	R2
Next 24 Hours	Minor	None	None	R1

For further information on NOAA Space Weather Scales refer to: <http://www.swpc.noaa.gov/noaa-scales-explanation>
 For further information on Sunspot Activity refer to: <https://www.swpc.noaa.gov/phenomena/sunspotssolar-cycle>



FEMA

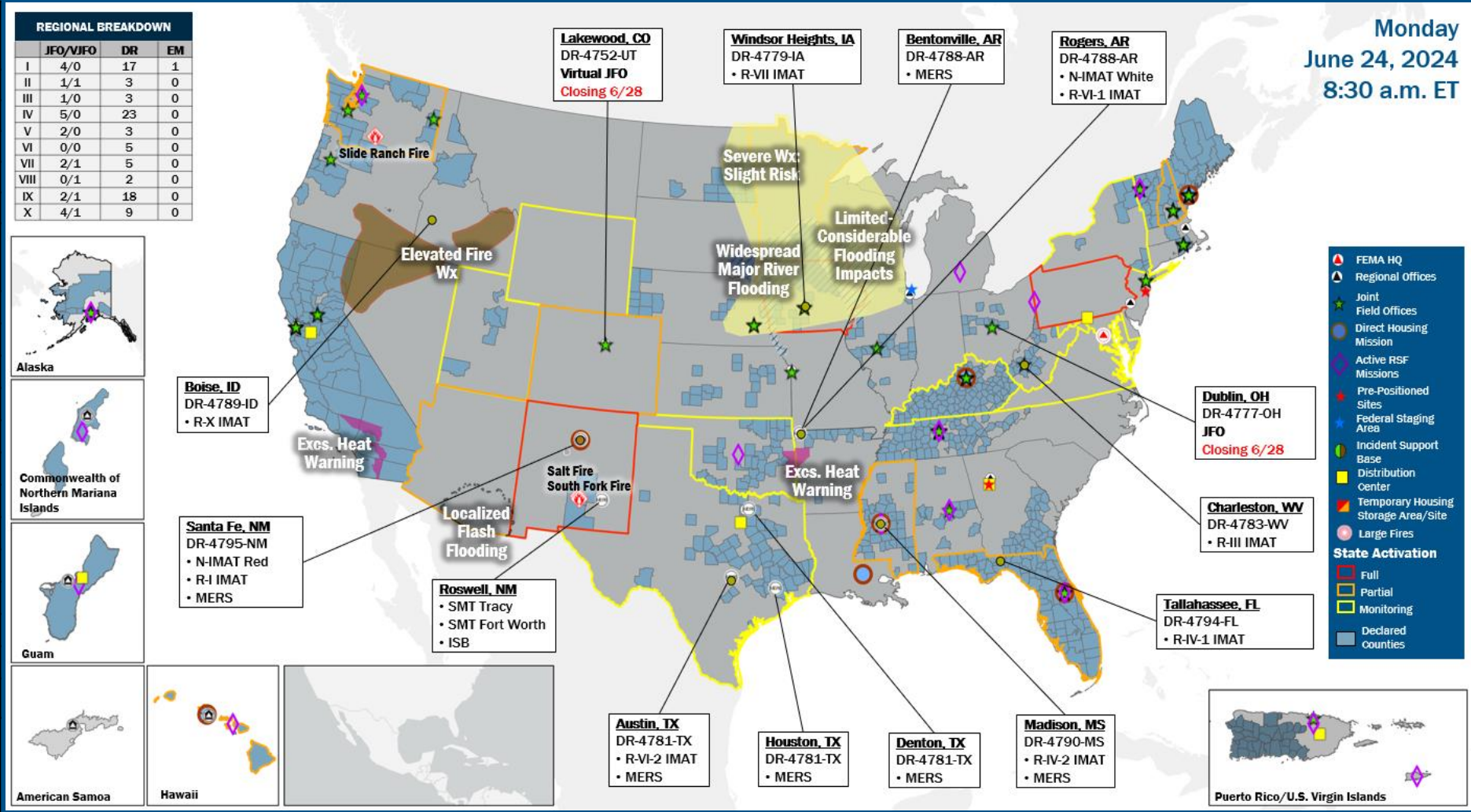
FEMA Common Operating Picture

21 + 5 Joint Field Offices Virtual Joint Field Offices Supporting
88 + 1 Major Disasters Emergency Declaration
12 Direct Housing Missions **26** RSF-Supported Disasters

Monday
 June 24, 2024
 8:30 a.m. ET

FEMA HQ	
NWC	NRCC
Monitoring	Activated
FEMA REGIONS	
Watch	RRCC
Monitoring	I Rostered
Monitoring	II Rostered
Monitoring	III Rostered
Monitoring	IV Rostered
Monitoring	V Rostered
Monitoring	VI Level III
Enhanced	VII Rostered
Monitoring	VIII Rostered
Monitoring	IX Rostered
Monitoring	X Rostered
Notes:	
RWCs/RRCCs/IMATs: • NRCC: Sustained Ops • RVI RRCC: Wildfires (8:00 a.m. to 5:00 p.m.) • R-VII Watch: Flooding	STATE EOCs: • KY/MS/OK/TX: Severe Weather • TX: Ongoing Threats • AZ/CO: SW Border • HI/OK/NM/UT/WA: Wildfires • CO: Hwy 50 Closure • WY: Hwy 22 Closure • FL/IA/MN: Severe Weather and Flash Flooding • DC/MD/NY/PA/VA: Heat Conditions • NH: NASCAR
Volunteer Force	
Rostered 7,821	Deployed 11
Surge Capacity Force	
Rostered 7,444	Deployed 0

N-IMATs	
2-5 Teams Available	
Red	NM (Jun 20)
White	AR (May 30)
Blue	
Gold	
HS	
R-IMATs	
4-6 Teams Available	
I	NM (Jun 19)
II	1
III	WV (May 24)
IV-1	FL (Jun 18)
IV-2	MS (Jun 11)
V	3
VI-1	AR (May 31)
VI-2	TX (May 17)
VII	IA (May 28)
VIII	2
IX-1	Personnel
IX-2	Personnel
X	ID (Jun 17)
Fully Mission Capable (FMC)	
Partially Mission Capable (PMC)	
Not Mission Capable (NMC)	
Deployed	



IM Workforce

13,542 Assigned
 4,912 (-8) Unavailable
 6,229 (-22) Deployed
 18% / 2,401 (+30) Available

IM Cadre Availability

16 Cadres ≤ 25% Availability
 Alternative Dispute Resolution: 23% (8/35); Civil Rights: 21% (33/158); Disability Integration: 6% (3/47); Disaster Survivor Assistance: 21% (240/1,170); Environmental Planning and Historic Preservation: 12% (96/794); External Affairs: 19% (94/503); Field Leadership: 20% (28/143); Hazard Mitigation: 13% (165/1,251); Human Resources: 20% (35/173); Individual Assistance: 8% (200/2,527); Information Technology: 18% (120/652); Operations: 7% (23/331); Planning: 4% (17/457); Public Assistance 19% (425/2190); Safety: 11% (9/83); Security: 12% (16/138)

MERS

> 66%
 36 Assigned
 0 Unavailable
 5 (+1) Deployed
 31 (-1) Available

US&R

> 66%
 28 Assigned
 2 Unavailable
 2 Deployed
 24 Available

FCO

≤ 1 Type I
 49 Assigned
 9 Unavailable
 33 (26 FCOR) Deployed
 7 Available

Joint Preliminary Damage Assessments

Region	State / Location	Incident	IA	Number of Counties		Start – End
			PA	Requested	Complete	
VII	KS	Severe Storms Apr 25-30	IA	0	0	N/A
			PA	12	12 (+3)	6/3 – 6/21
	NE	Severe Storms May 20–Jun 3	IA	0	0	N/A
			PA	17	0	6/24 – TBD
VIII	MT	Flooding and Wind May 5-9	IA	0	0	N/A
			PA	13	3	6/10 – TBD



FEMA

Declaration Request – Iowa

Declaration Type: Major Disaster Declaration – IA

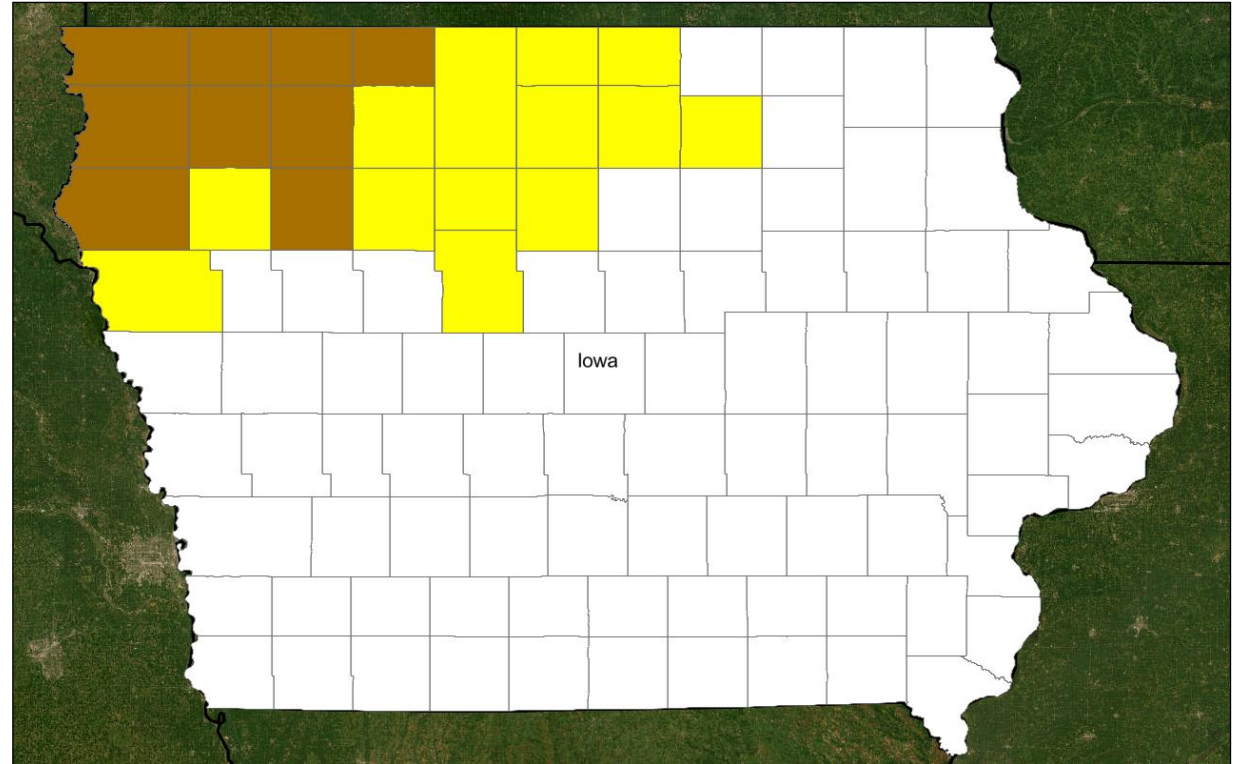
Requested: Jun 23

Incident: Severe Storms, Flooding, Straight-line Winds, and Tornadoes

Incident Period: June 16 and continuing

Requested:

- **IA:** 9 counties
- **PA:** 22 counties
- **Hazard Mitigation:** Statewide



FEMA

Declaration Requests in Process – 10

State / Tribe / Territory – Incident Description	Type	IA	PA	HM	Requested
OH – Train Derailment	DR	X	X	X	Jul 3, 2023
AK – Structure Fire (Kivalina)	DR		X	X	May 30
AK – Structure Fire (South Tongass)	DR		X	X	May 30
MI – Severe Storm and Tornadoes	DR	X		X	Jun 6
PR – Severe Storms, Flooding, Landslides, and Mudslides	DR	X	X	X	Jun 10
NH – Severe Winter Storm and Flooding	DR		X	X	Jun 10
Chickasaw Nation – Severe Storms	DR		X	X	Jun 10
MO – Severe Storms, Straight-line Winds, Tornadoes, and Flooding	DR	X	X	X	Jun 12
KY – Severe Storms, Straight-line Winds, Tornadoes, Landslides, and Mudslides	DR	X	X	X	Jun 14
IA – Severe Storms, flooding, Straight-line Winds, and Tornadoes	DR	X	X	X	Jun 23



FEMA

Declaration Amendments - 2

Declaration	Number	Issued	Action
FEMA-4795-DR-NM	1	Jun 23	Declared disaster incident has been changed to South Fork Fire, Salt Fire, and Flooding
FEMA-4795-DR-NM	2	Jun 23	Adds 1 county including the Mescalero Apache Tribe for Individual Assistance and 1 county including the Mescalero Apache Tribe for debris removal and emergency protective measures (Categories A and B) under Public Assistance program



FEMA



FEMA

Helping people before, during, and after disasters.



Scan to subscribe to this briefing.