

FEMA National Watch Center

# Daily Operations Briefing

Monday, June 23, 2025

8:30 a.m. ET



**FEMA**

# National Current Ops / Monitoring

---

## New Significant Incidents / Ongoing Ops

- No new significant incidents / operations

## Hazard Monitoring

- Severe Weather/Excessive Rainfall – The Plains to Upper Mississippi Valley, and the Great Lakes
- Extreme Heat – Middle Mississippi Valley to Northeast
- Tropical Activity:
  - Atlantic:
    - Disturbance 1: High (70%)
  - Eastern Pacific:
    - Disturbance 1: High (70%)

## Disaster Declaration Activity

- FMAG Approval: Bear Creek – Alaska
- FMAG Approval: Cotton 2 Fire – New Mexico

## Event Monitoring

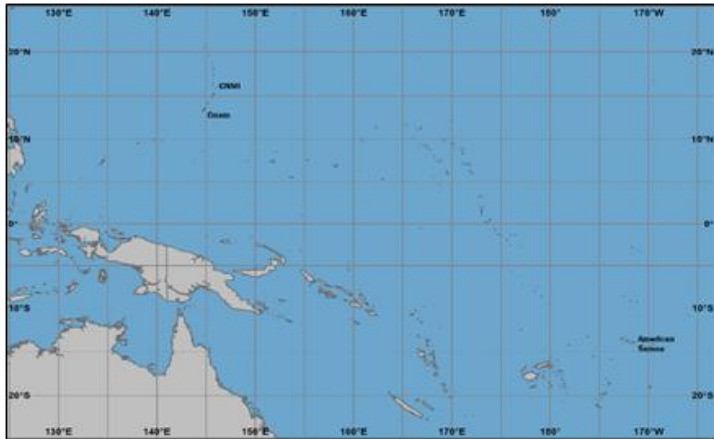
- No new significant events



**FEMA**

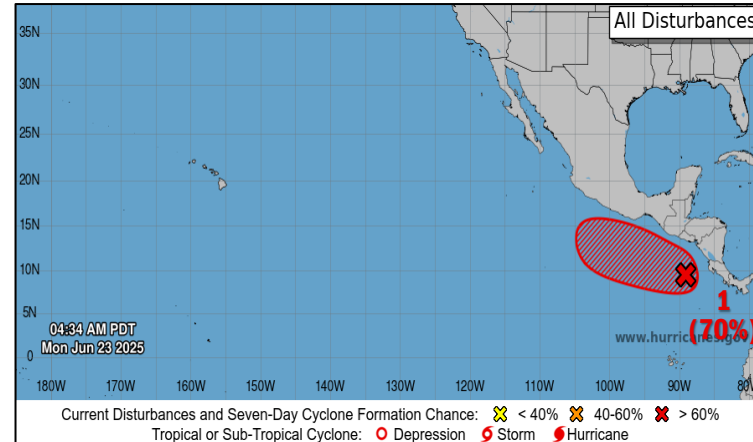
# Tropical Outlook

## Western Pacific



- No tropical cyclones threatening the U.S. territories are expected during the next 7 days

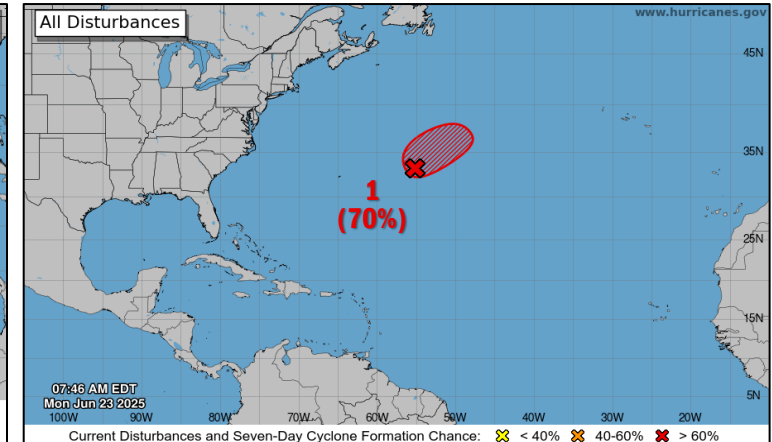
## Central and Eastern Pacific



### Disturbance 1: (As of 7:30 a.m. ET)

- Located a few hundred miles off the coast of Central America
- Conditions appear conducive for gradual development of this system and a tropical depression is likely to form by late this week or over the weekend
- Formation chance – 48 hour: Low (10%); 7-day: High (70%)

## Atlantic



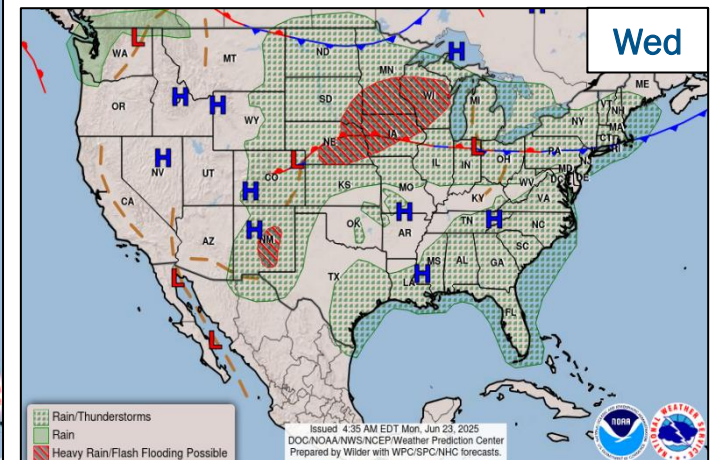
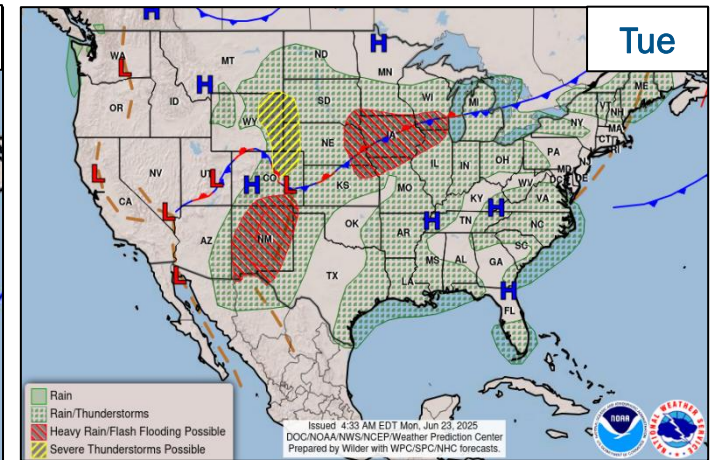
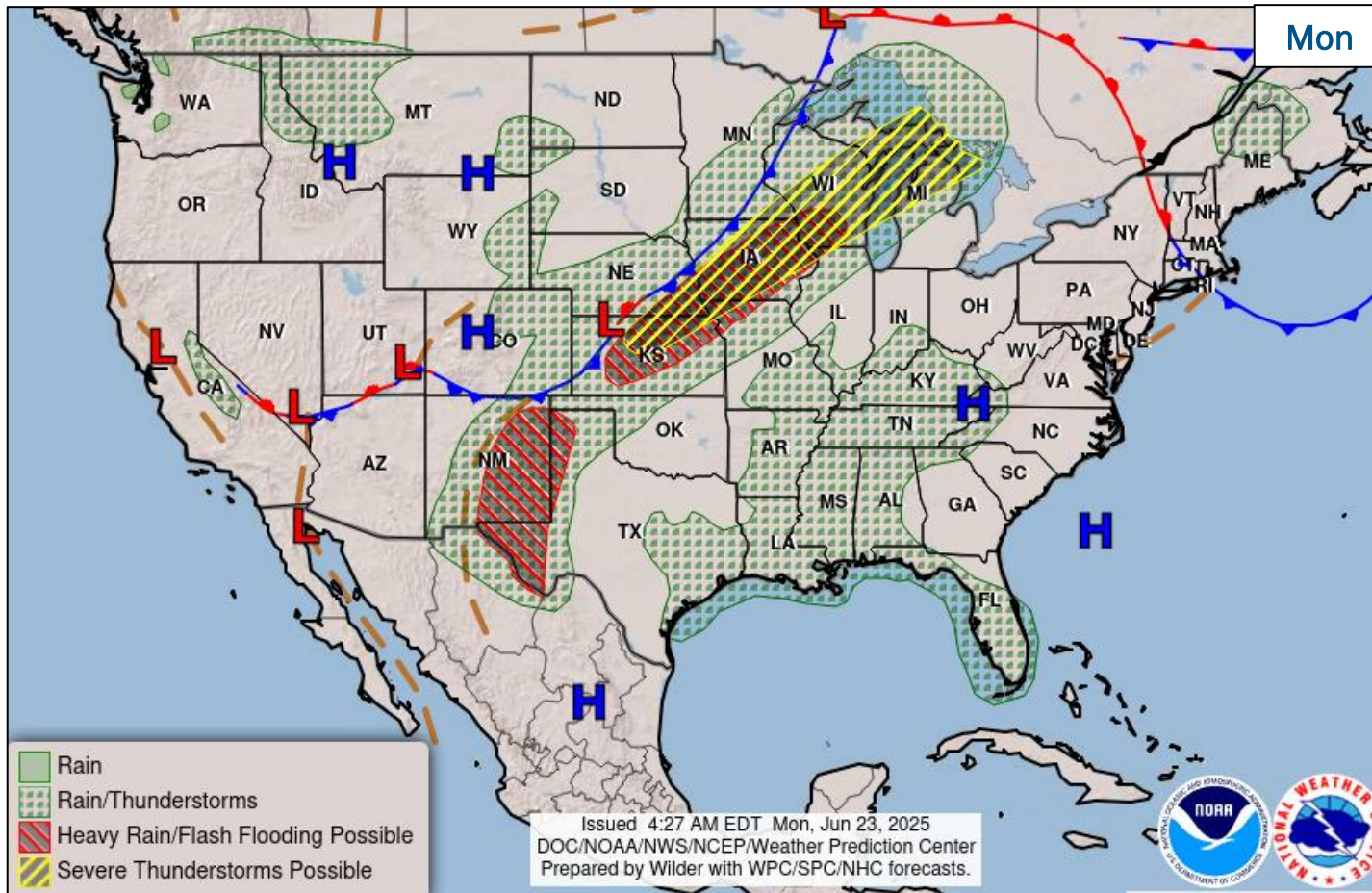
### Disturbance 1: (As of 8:00 a.m. ET)

- Located about 600 miles E of Bermuda
- Conditions appear conducive for some gradual development in the formation of a short-lived tropical depression or storm
- Formation chance – 48 hour: High (70%); 7-day: High (70%)



FEMA

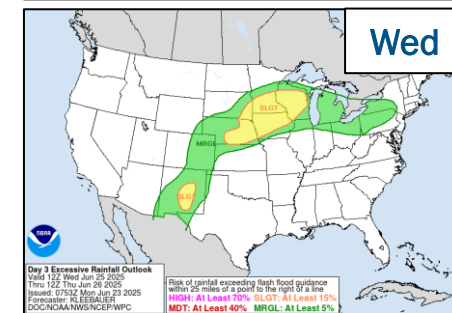
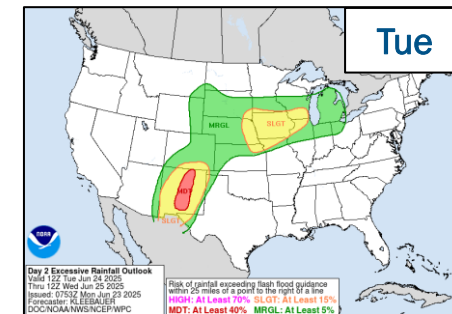
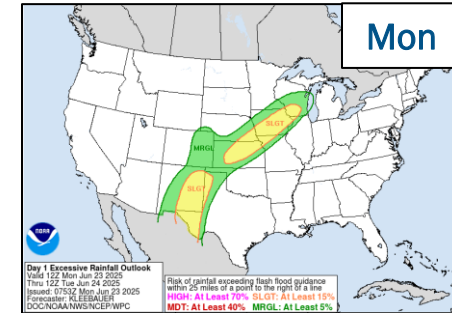
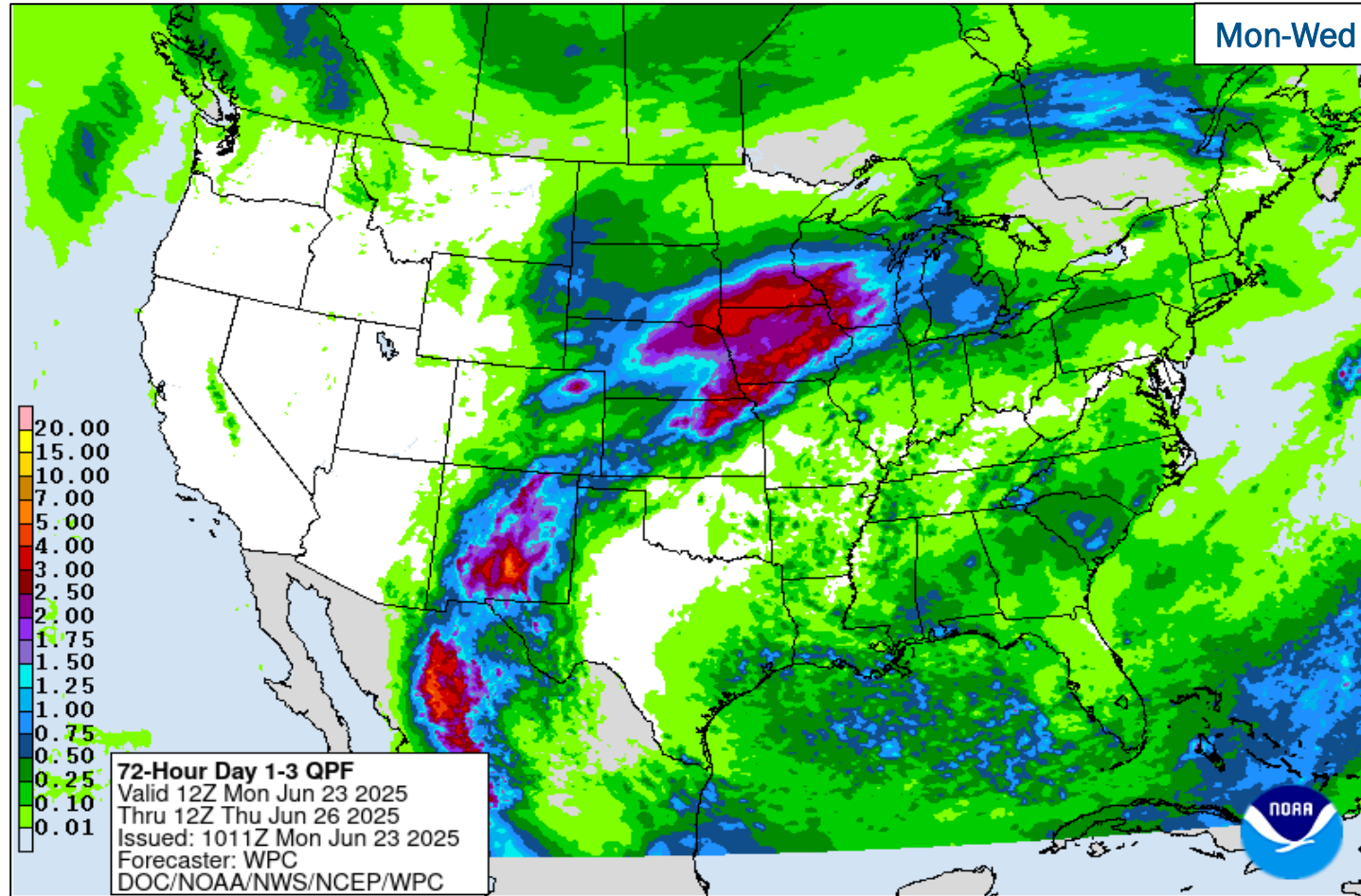
# National Weather Forecast



FEMA

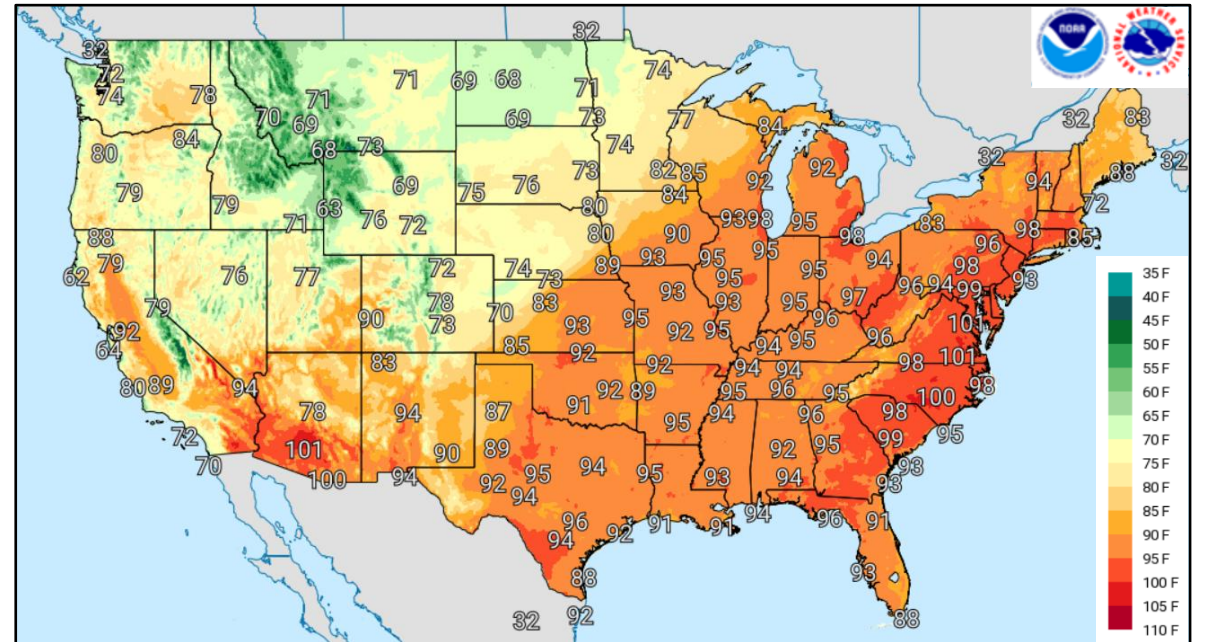
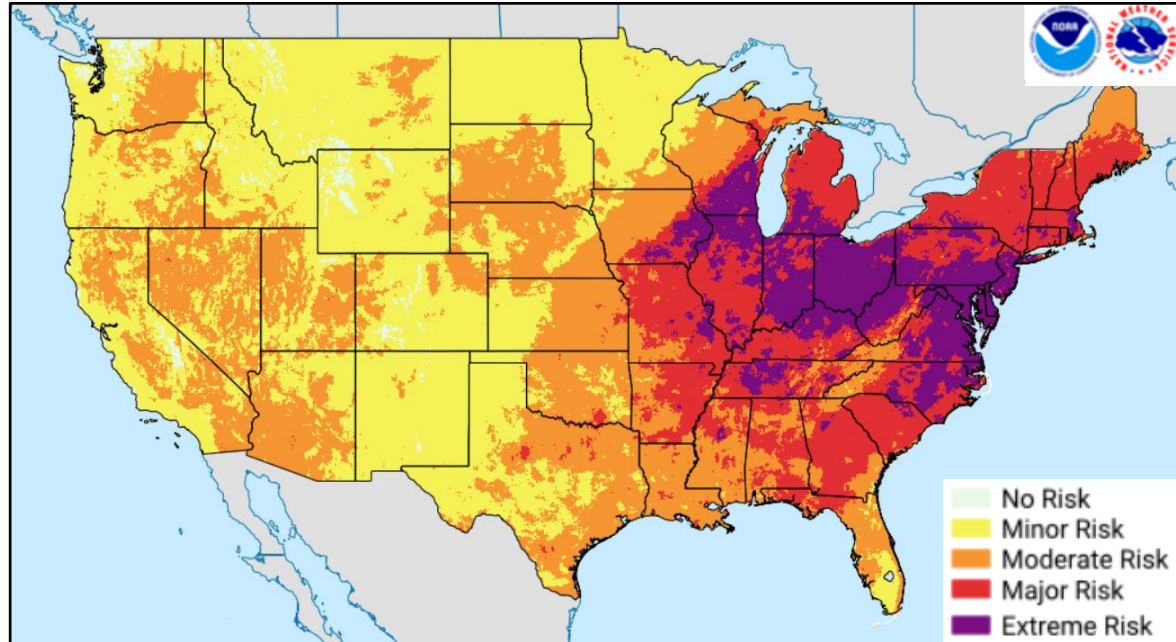
National Watch Center

# Precipitation & Excessive Rainfall



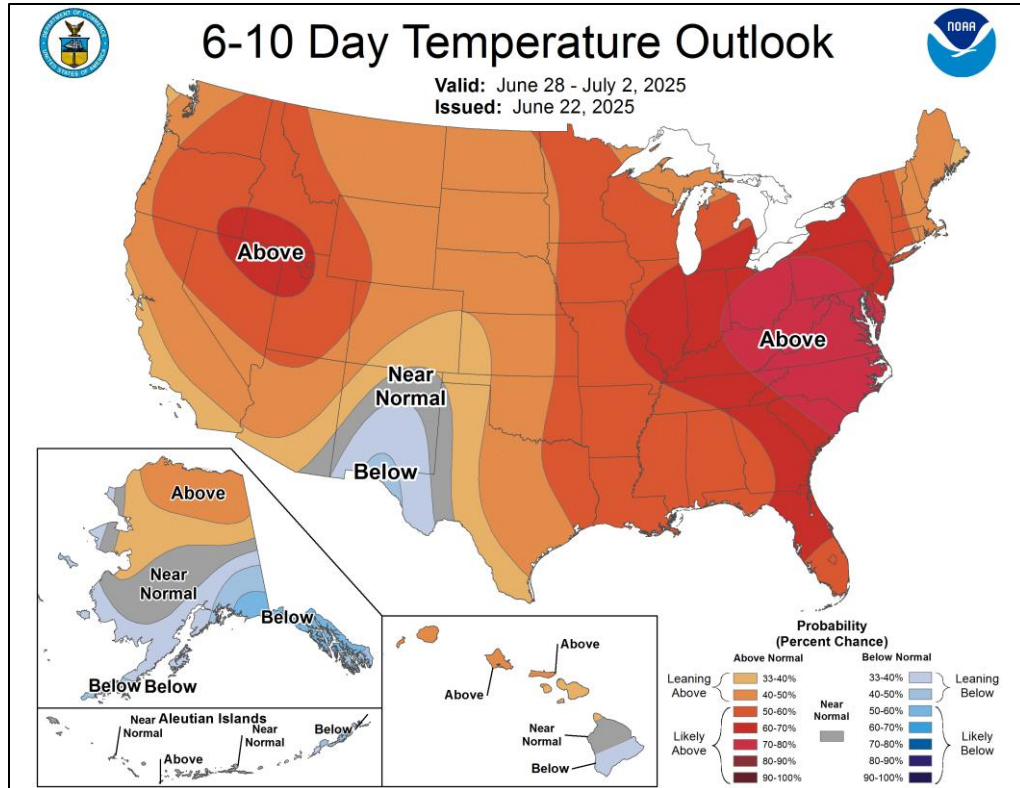
**FEMA**

# Heat Risk– Jun 23

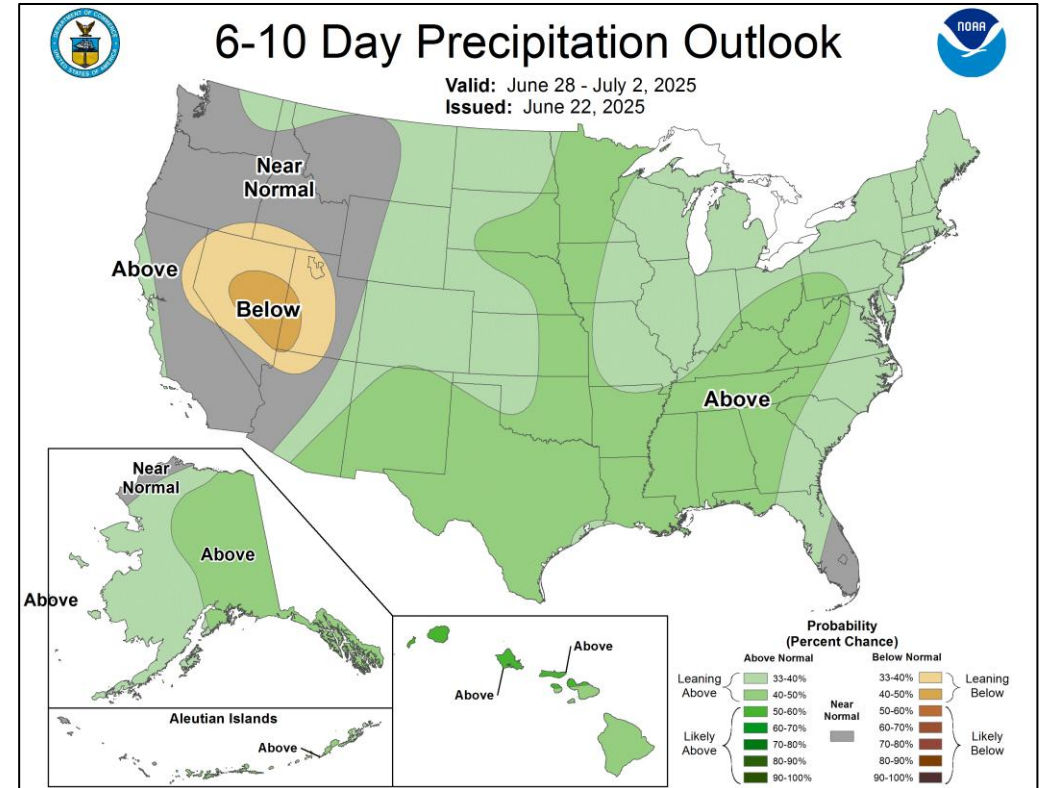


FEMA

# Long Range Outlooks – Jun 28-Jul 2



6-10 Day Temperature Probability



6-10 Day Precipitation Probability

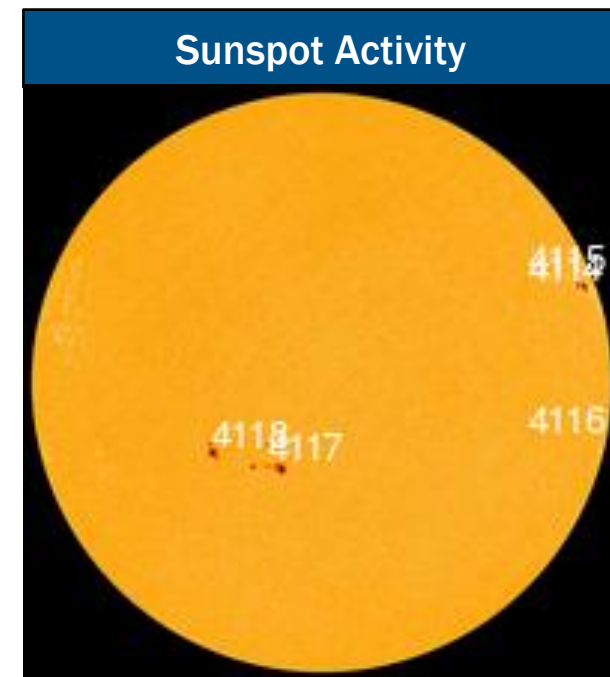
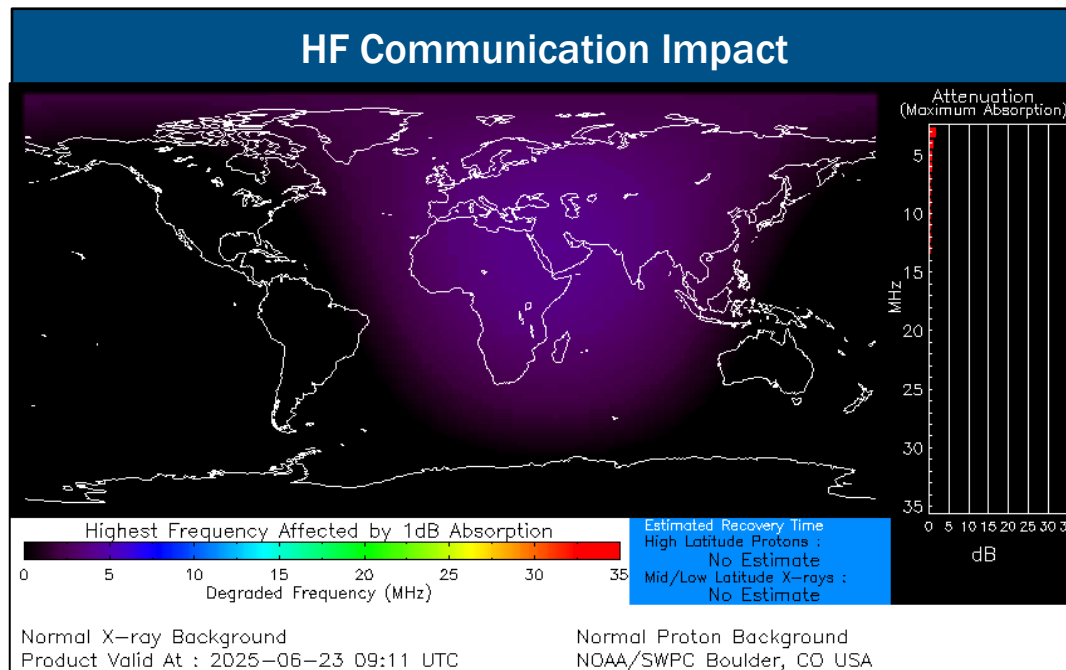


FEMA

# Space Weather Outlook

Minor	Space Weather Activity	Geomagnetic Storms	Solar Radiation	Radio Blackouts
Past 24 Hours	None	None	None	None
Next 24 Hours	None	None	None	None

For further information on NOAA Space Weather Scales refer to: <http://www.swpc.noaa.gov/noaa-scales-explanation>  
 For further information on Sunspot Activity refer to: <https://www.swpc.noaa.gov/phenomena/sunspotssolar-cycle>



FEMA

# Bear Creek Fire– Alaska

Fire Name (County, ST)	FMAG #	Acres Burned	Percent Contained	Evacuations	Structures (Homes / Other)			Fatalities / Injuries
					Threatened	Damaged	Destroyed	
Bear Creek (Denali Borough, AK)	5595-FM-AK	21,111	0%	M: 733	H: 293	H: 0	H: 0	0 / 0
				V: 0	O: 0	O: 0	O: 0	

**Situation:** The FEMA Region X Regional Administrator has approved a Fire Management Assistance Grant (FMAG) for the Bear Creek Fire, which has burned 21,111 acres with 0% containment. The fire is burning on federal, state and private land in the community of Denali Borough, AK (est. pop 2k). Aside from the FMAG approval, no additional federal assistance has been requested.

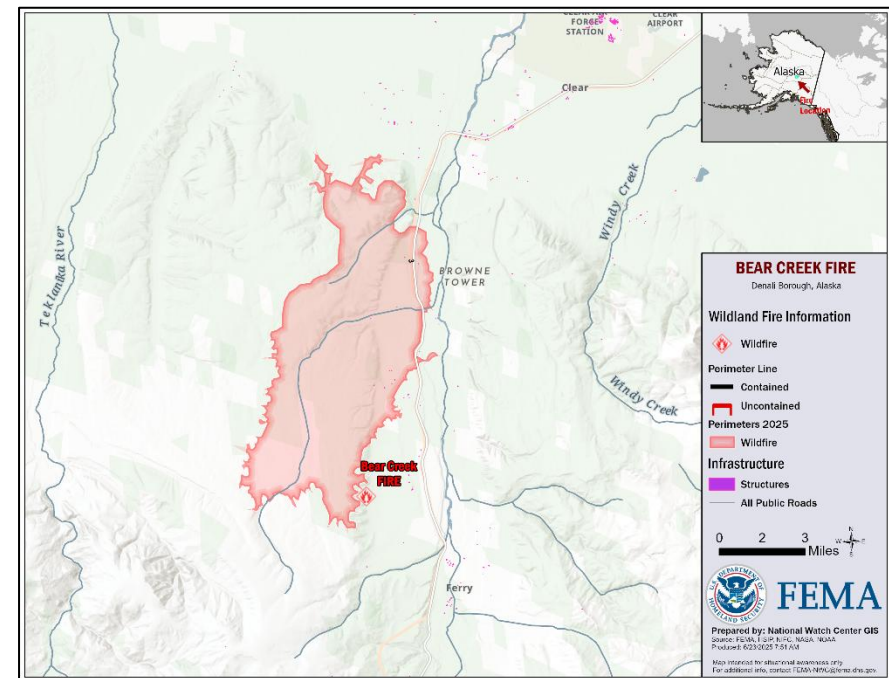
**State / Local Response:**

- AK SEOC is Monitoring (Wildfires)

**FEMA / Federal Response:**

- Region X is Monitoring; RRCC is Rostered
- NWC is Monitoring; NRCC is Rostered

Reporting will continue in the FEMA Daily Operations Briefing (8:30 a.m. ET) and the twice daily FEMA National Situation Report (5:00 p.m. / 3:00 a.m. ET).



**FEMA**

# Cotton 2 Fire– New Mexico

Fire Name (County, ST)	FMAG #	Acres Burned	Percent Contained	Evacuations	Structures (Homes / Other)			Fatalities / Injuries
					Threatened	Damaged	Destroyed	
Cotton 2 (Valencia, NM)	5594-FM-NM	95	0%	M: 300	H: 750	H: 0	H: 0	0 / 0
				V: 0	O: 0	O: 0	O: 0	

**Situation:** The FEMA Region VI Regional Administrator has approved a Fire Management Assistance Grant (FMAG) for the Cotton 2 Fire, which has burned 95 acres with 0% containment. The fire is burning on state and private land in the community of Los Lunas, NM (est. pop 19k). Aside from the FMAG approval, no additional federal assistance has been requested.

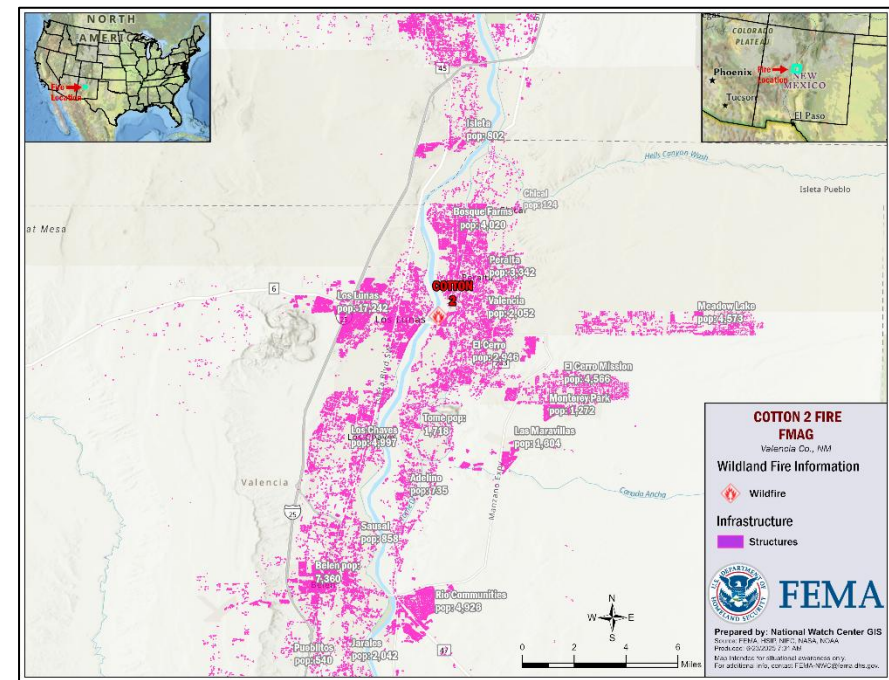
**State / Local Response:**

- NM SEOC is at Partial Activation (Wildfires and Civil Disturbance)

**FEMA / Federal Response:**

- Region VI is Monitoring; RRCC is Rostered
- NWC is Monitoring; NRCC is Rostered

Reporting will continue in the FEMA Daily Operations Briefing (8:30 a.m. ET) and the twice daily FEMA National Situation Report (5:00 p.m. / 3:00 a.m. ET).



**FEMA**

# Wildfire Summary

Fire Name (County, ST)	FMAG #	Acres Burned	Percent Contained	Evacuations	Structures (Homes / Other)			Fatalities / Injuries
					Threatened	Damaged	Destroyed	
Cotton (Valencia, NM)	XXXX-FM-NM	250	0%	M: 250	H: 633	H: 0	H: 10	0 / 0
				V: 0	O: 0	O: 0	O: 0	
Trout (Grant, NM)	5588-FM-NM	46,796 (+437)	22% (+3)	M: 2,426	H: 2,185 (-142)	H: 0	H: 0	0 / 10 (+2)
				V: 0	O: 2,500 (-100)	O: 0	O: 5 (+5)	
Conner (Douglas Co. NV)	XXXX-FM-NV	17,713 (+362)	19% (+19)	M: LIFTED	H: 0 (-6)	H: 0	H: 2	0 / 1
				V: 0	O: 1 (-9)	O: 0	O: 0	
Forsyth (Washington, UT)	5591-FM-UT	5,660 (+4,013)	0%	M: 450	H: 300	H: 3 (+3)	H: 13 (+13)	0 / 0
				V: 0	O: 15	O: 1 (+1)	O: 4 (+4)	

(Evacuations: M = Mandatory / V = Voluntary; Structures: H = Homes and Mixed Commercial/Residential / O = Non-residential Commercial/Other Minor Structures)



FEMA

National Watch Center

# FEMA Common Operating Picture

**21** Joint Field Offices    **77 + 8** Major Disasters    **10** Direct Housing Missions    **14** RSF-Supported Disasters    **6** Joint Recovery Offices

Monday  
June 23, 2025  
8:30 a.m. ET

FEMA HQ	
NWC	NRCC
Monitoring	Steady State
FEMA REGIONS	
Watch	RRCC
Monitoring I	Rostered
Monitoring II	Rostered
Monitoring III	Rostered
Monitoring IV	Rostered
Monitoring V	Rostered
Monitoring VI	Rostered
Monitoring VII	Rostered
Monitoring VIII	Rostered
Monitoring IX	Rostered
Monitoring X	Rostered

N-IMATs	
2-5 Teams Available	
Red	AL* (Jun 22)
White	
Blue	
Gold	
HS	AL* (Jun 22)

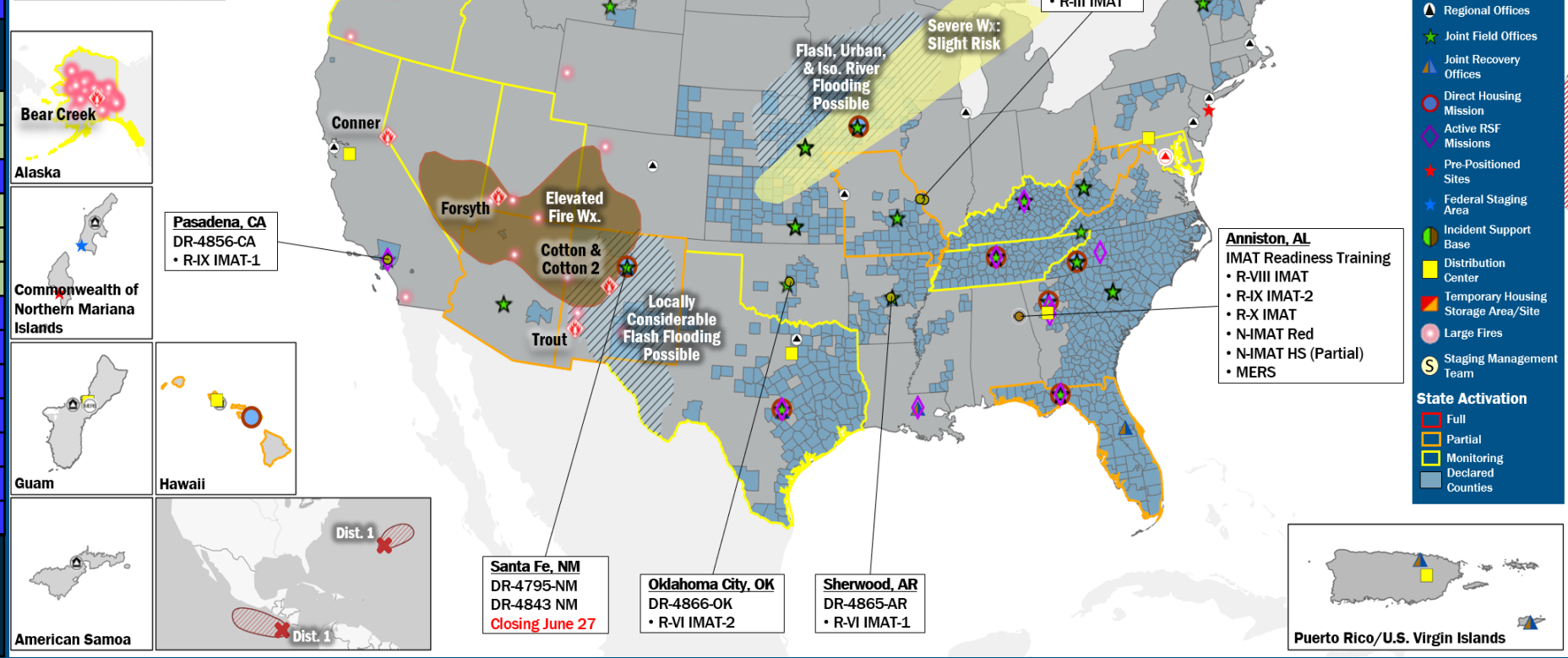
R-IMATs	
≥7 Teams Available	
I	2
II	
III	MO (Jun 20)
IV-1	3
IV-2	
V	1
VI-1	AR (May 15)
VI-2	OK (May 27)
VII	MO (Jun 10)
VIII	AL* (Jun 22)
IX-1	CA (Jan 8)
IX-2	AL* (Jun 22)
X	AL* (Jun 22)

**Notes:**  
 NRCC/RWCs/RRCCs:  
 • \* IMATs are deployed for training and remain available for redeployment  
 State EOCs:  
 • AZ/HI/NM/OR/TX/UT/AK: Wildfires  
 • MO: Severe Weather  
 • FL/KY/TN: Previous Incidents  
 • MD/WV: Flooding  
 • KY/NM/NV: Civil Disturbance

Volunteer Force	
Rostered	Deployed
7,985	4
Surge Capacity Force	
Rostered	Deployed
8,488	0

■ Fully Mission Capable (FMC)  
■ Partially Mission Capable (PMC)  
■ Not Mission Capable (NMC)  
■ Deployed

REGIONAL BREAKDOWN				
	JFO	DR	EM	JRO
I	2	6	0	0
II	0	0	0	2
III	2	8	1	0
IV	6	26	7	1
V	0	0	0	0
VI	4	10	0	3
VII	4	21	0	0
VIII	1	1	0	0
IX	2	5	0	0
X	0	0	0	0



## IM Workforce

12,576 Assigned  
 4,738 (-12) Unavailable  
 5,998 (-13) Deployed  
 15% (+1) / 1,840 (+25) Available

## IM Cadre Availability

20 Cadres ≤ 25% Availability

Alternative Dispute Resolution: 18% (6/33); Civil Rights: 17% (25/149); Disaster Field Training Operations: 22% (15/68); Disability Integration: 7% (2/28); Disaster Survivor Assistance: 15% (169/1,113); External Affairs: 9% (29/337); Environmental Planning and Historic Preservation: 8% (61/740); Field Leadership: 7% (10/136); Financial Management: 15% (30/194); Hazard Mitigation: 7% (65/883); Human Resources: 12% (20/164); Individual Assistance: 15% (361/2,467); Interagency Recovery Coordination: 16% (41/258); Information Technology: 12% (79/634); Logistics: 18% (285/1,597); Operations: 12% (47/388); Public Assistance: 10% (212/2,150); Planning: 5% (19/401); Safety: 5% (5/91); Security: 12% (14/116)

## MERS

≥ 66%  
 33 Assigned  
 3 Unavailable  
 0 (-1) Deployed  
 30 (+1) Available

## US&R

≥ 66%  
 28 Assigned  
 1 Unavailable  
 0 Deployed  
 27 Available

## FCO

≤ 1 Type I  
 42 Assigned  
 0 Unavailable  
 36 (20 FCOR) Deployed  
 6 Available

# Joint Preliminary Damage Assessments

Region	State / Location	Incident	IA	Number of Counties		Start - End
			PA	Requested	Complete	
III	WV	Severe Storms & Flooding June 14, 2025	IA	2	0	6/23 - TBD
			PA	0	0	N/A



**FEMA**

# Declaration Requests in Process – 6

State / Tribe / Territory – Incident Description	Type	IA	PA	HM	Requested
MI – Severe Winter Storm	DR	X	X	X	May 16
OR – Severe Storms, Flooding , Landslides, Mudslides	DR	X	X	X	May 19
IN – Severe Storms, Straight-line Winds, Tornadoes, and Flooding	DR	X	X	X	May 28
KY – Severe Winter Storm (Appeal)	DR		X	X	Jun 4
MD – Severe Storms and Flooding	DR		X	X	Jun 11
KS – Severe Storms, Straight-line Winds, Tornadoes, and Flooding	DR		X	X	Jun 17



**FEMA**



# FEMA

Helping people before, during, and after disasters.



*Scan to subscribe to this briefing.*