

FEMA National Watch Center

Daily Operations Briefing

Monday, May 20, 2024

8:30 a.m. ET



FEMA

National Current Ops / Monitoring

New Significant Incidents / Ongoing Ops

- Severe Weather – TX/LA

Hazard Monitoring

- Severe Thunderstorms – Plains
- Heavy Rain/Flash Flooding – Central Plains
- Critical Fire – Southwest

Disaster Declaration Activity

- No new declaration activity

Event Monitoring

- No new significant events



FEMA

Severe Weather – Texas/Louisiana

Situation: On May 16, a severe weather system traversed SE Texas and SW Louisiana causing straight-line wind damage, primarily in the Houston metro area. Wind speeds reaching up to 78 mph affected numerous downtown skyscrapers, shattered windows, and caused a crane to collapse. Damage to power lines resulted in widespread power outages peaking over 1M and continuing to trend downward. **As power is restored, outages continue to trend downward. Recovery efforts in Texas are ongoing as the weather system has moved out of Texas and Louisiana.**

Lifelines Impacts:

Safety and Security: (Region VI SitRep, as of 12:48 p.m. ET, May 18)

- TX:
 - Damage to skyscraper windows, trees, transmission and power lines
 - Minor damage reported to homes
- LA: Minor damage reported (downed trees/power lines)

Food, Hydration, and Shelter: (ARC Morning Shelter Report, as of 6:50 a.m. ET, May 19 & Region VI SitRep, as of 12:48 p.m. ET, May 18)

- TX: 6 shelters open / 204 (+43) occupants
- 8 Cooling Centers opened in Harris County

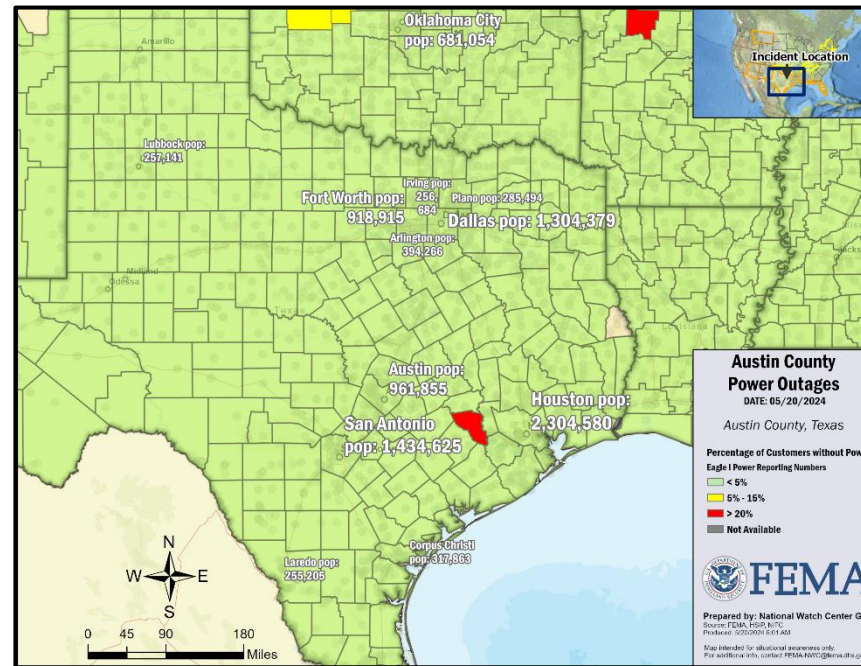
Health and Medical: (Region VI Update, as of 3:04 p.m. ET, May 19)

- TX:
 - 4 confirmed / 3 unconfirmed fatalities
 - 1 hospital in the Houston area remains on generator power

LA: 2 hospitals and 1 nursing home remain on generator power

Water Systems: (Region VI Update, as of 3:04 p.m. ET, May 19)

- TX: Commission on Environmental Quality is tracking 49 drinking water systems on a Boil Water notice affecting 26,296 residents
- LA: 10 boil water advisories; affecting 6 parishes / 540 customers



HQ:

- The NWC will continue to monitor in coordination with FEMA Region VI.

Energy: (EAGLE-1, as of 6:45 a.m. ET, May 20)

- TX: 4k (-351k) outages statewide, down from a peak of 1 million on May 17 at 1:45 a.m.
 - Austin Co.: 3k (-47k)

Communication:

- 9 of 14 transmission lines are repaired

State / Local Response:

Region VI:

- TX EOC: Partial Activation (Severe Weather)
- LA EOC: Monitoring

Federal / FEMA Response:

Region VI:

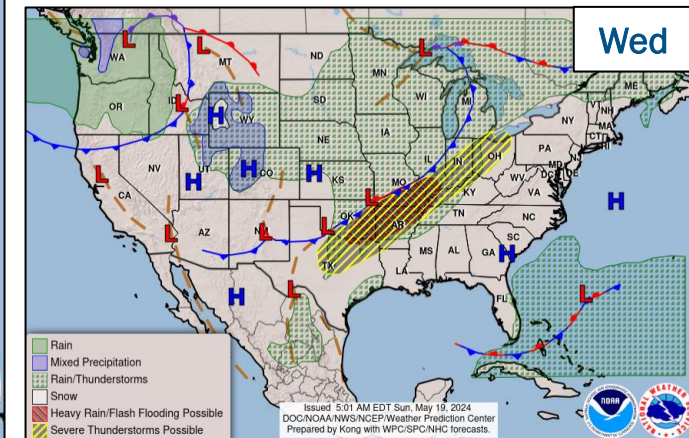
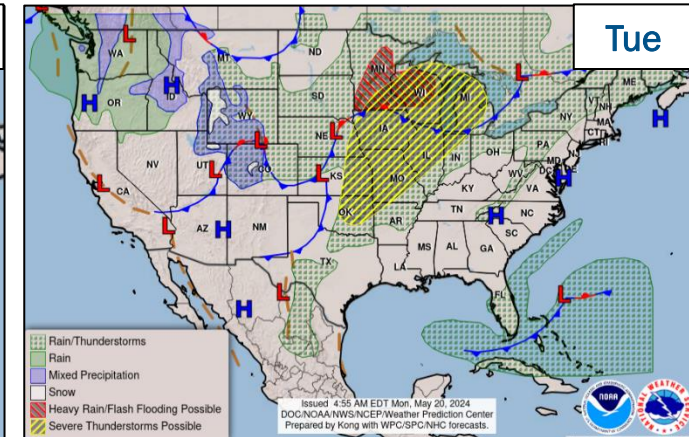
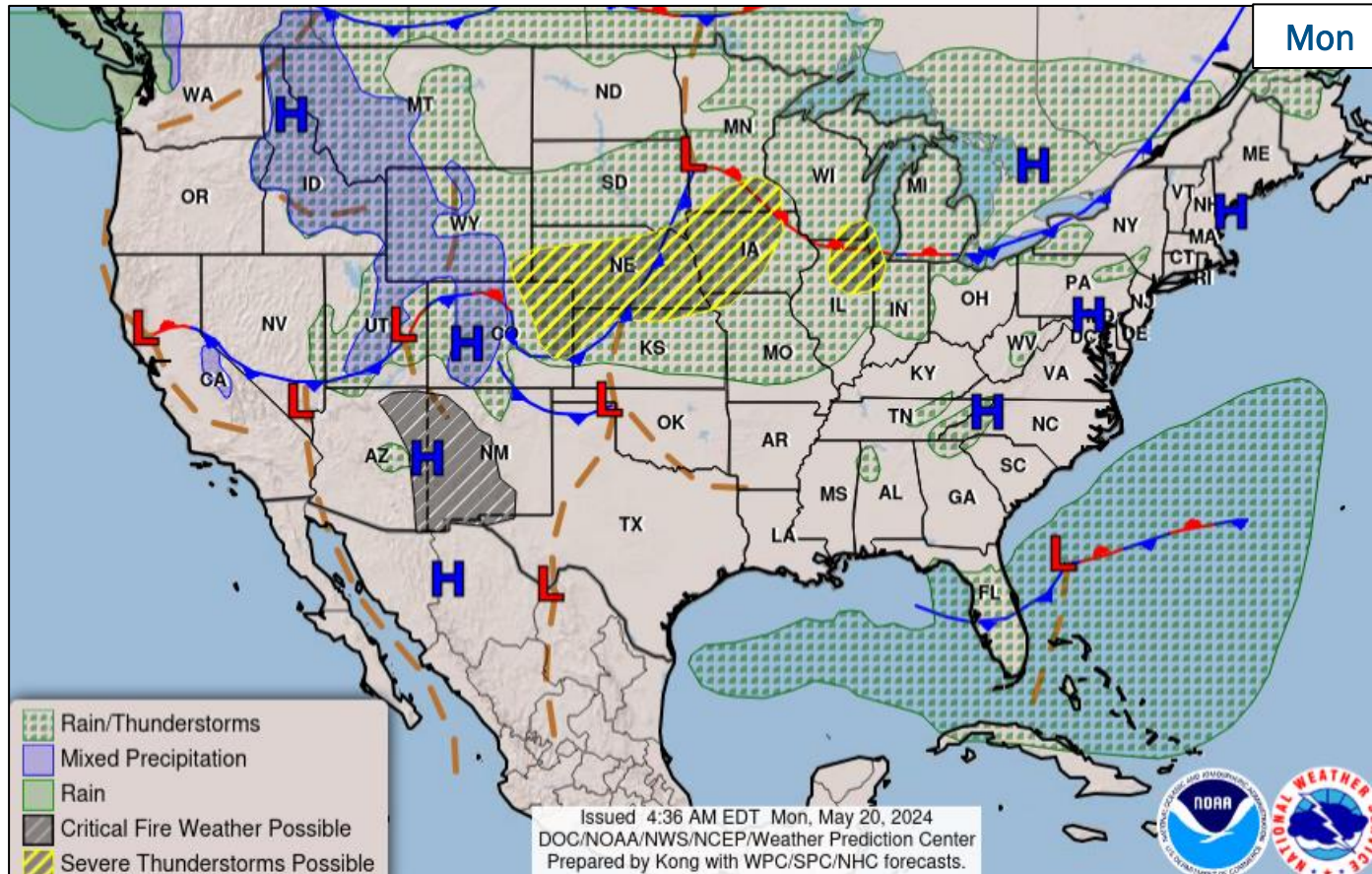
- MOC at Monitoring: RRCC is rostered
- IMAT-1 remains deployed to OK (FEMA-4776-DR-OK)
- IMAT-2 deployed to Texas Dept. of Emergency Management (TDEM)
- MERS: 5 personnel deployed to TX EOC



FEMA

National Watch Center

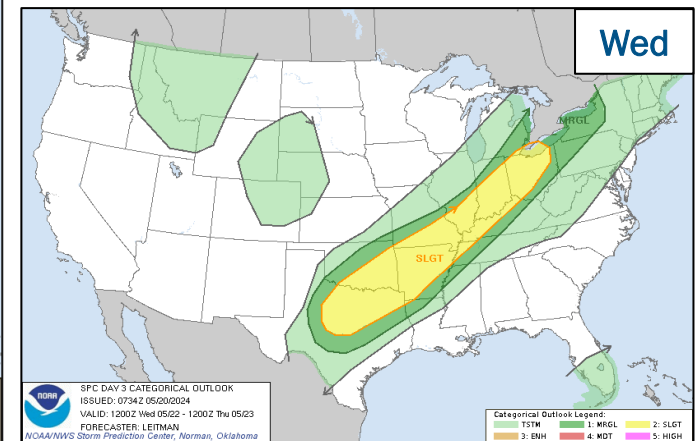
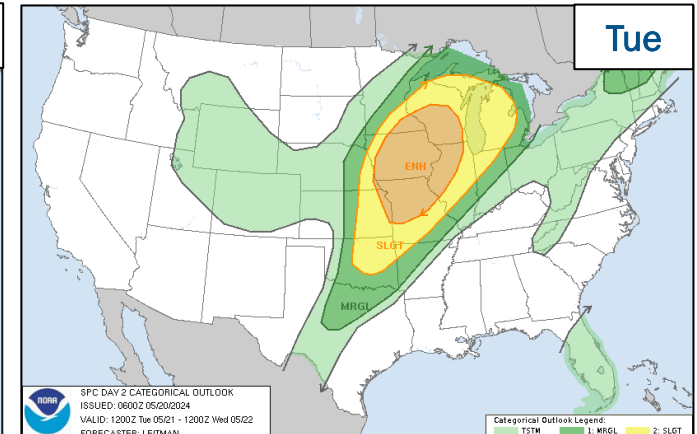
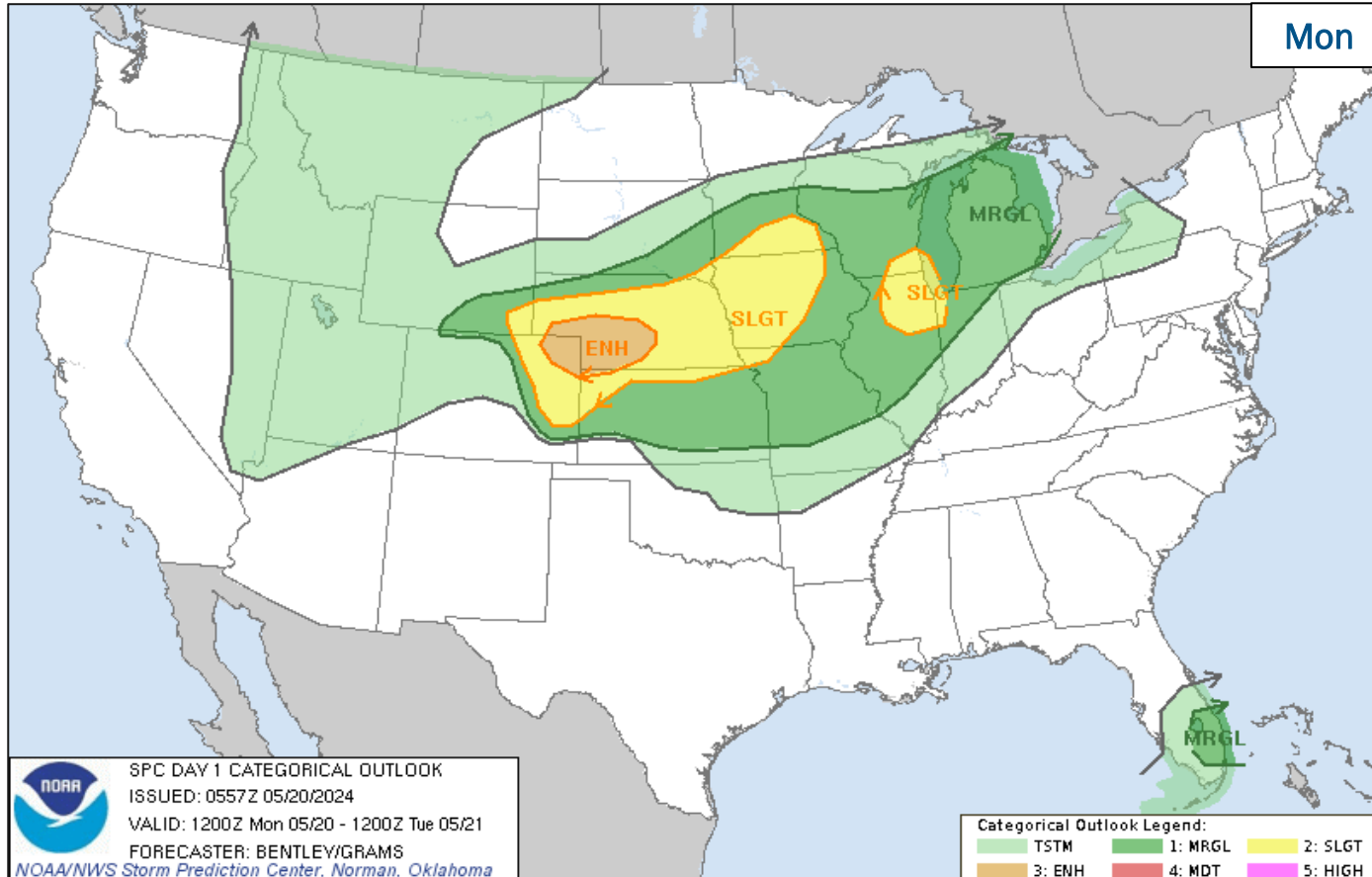
National Weather Forecast



FEMA

National Watch Center

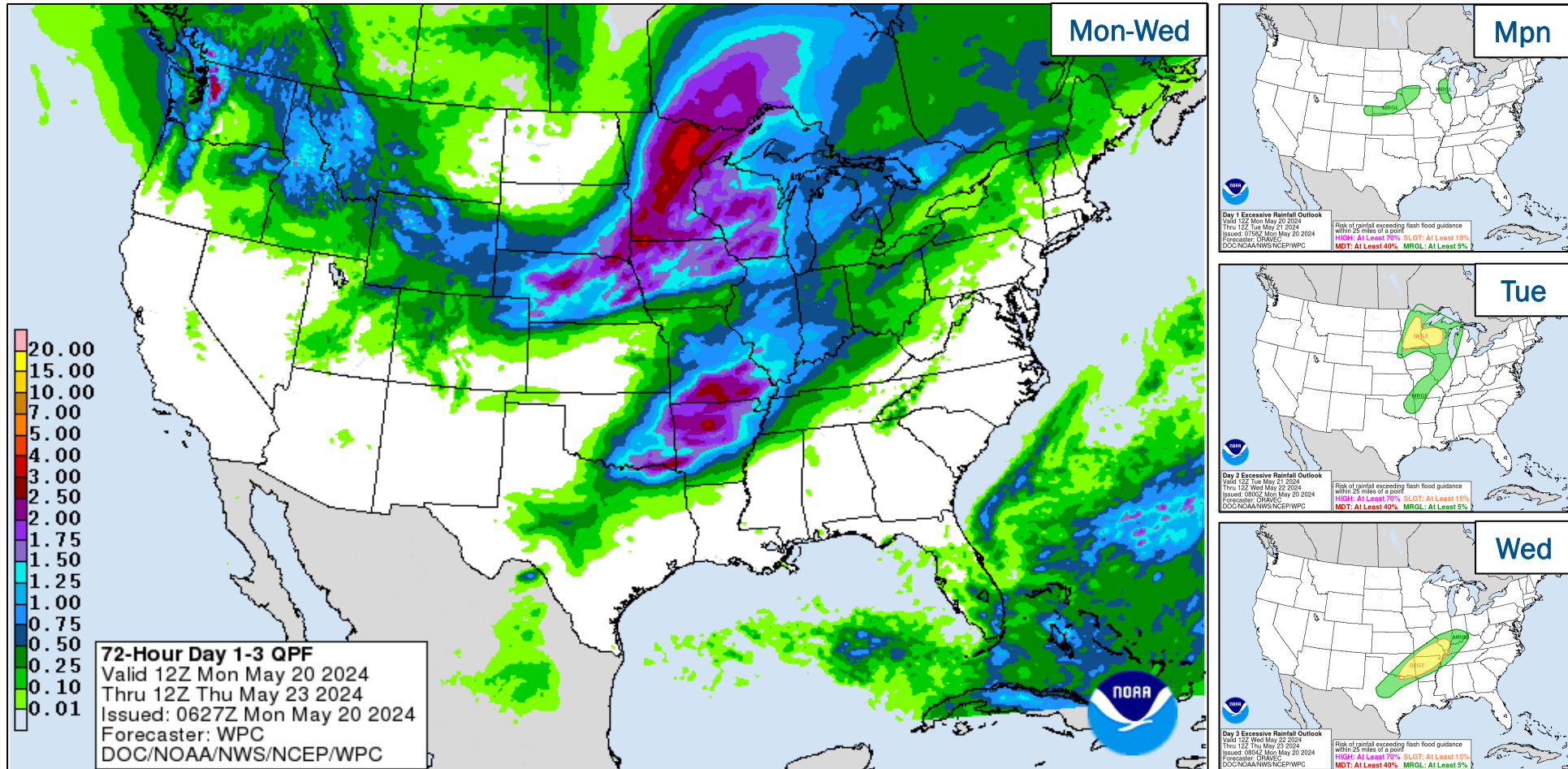
Severe Weather Outlook



FEMA

National Watch Center

Precipitation & Excessive Rainfall



FEMA

National Watch Center

FEMA Common Operating Picture

18 + 5 Joint Field Offices Virtual Joint Field Offices Supporting
75 + 1 Major Disasters Emergency Declarations
12 Direct Housing Missions **26** RSF-Supported Disasters

Monday
 May 20, 2024
 8:30 a.m. ET

FEMA HQ

NWC	NRCC
Monitoring	Activated

FEMA REGIONS

Watch	RRCC
Monitoring	I Rostered
Monitoring	II Rostered
Monitoring	III Rostered
Monitoring	IV Rostered
Monitoring	V Rostered
Monitoring	VI Rostered
Monitoring	VII Rostered
Monitoring	VIII Rostered
Monitoring	IX Rostered
Monitoring	X Rostered

Notes:

RWCs/RRCCs/IMATs:
 • NRCC: Sustained Ops

STATE EOCs:
 • AL/FL/MS/OK/TN/TX/MT: Severe Weather
 • TX: Ongoing Threats
 • AZ/CO: SW Border
 • MD: Key Bridge Incident
 • HI/OK: Wildfires
 • AK: 2024 Riverwatch Operations
 • CO: Hwy 50 CDOT Closure
 • NY: Commencement Activity
 • KY: Flooding

Volunteer Force

Rostered	Deployed
7,814	65

Surge Capacity Force

Rostered	Deployed
7,434	0

N-IMATs

2-5 Teams Available

Red	
White	
Blue	
Gold	
HS	

R-IMATs

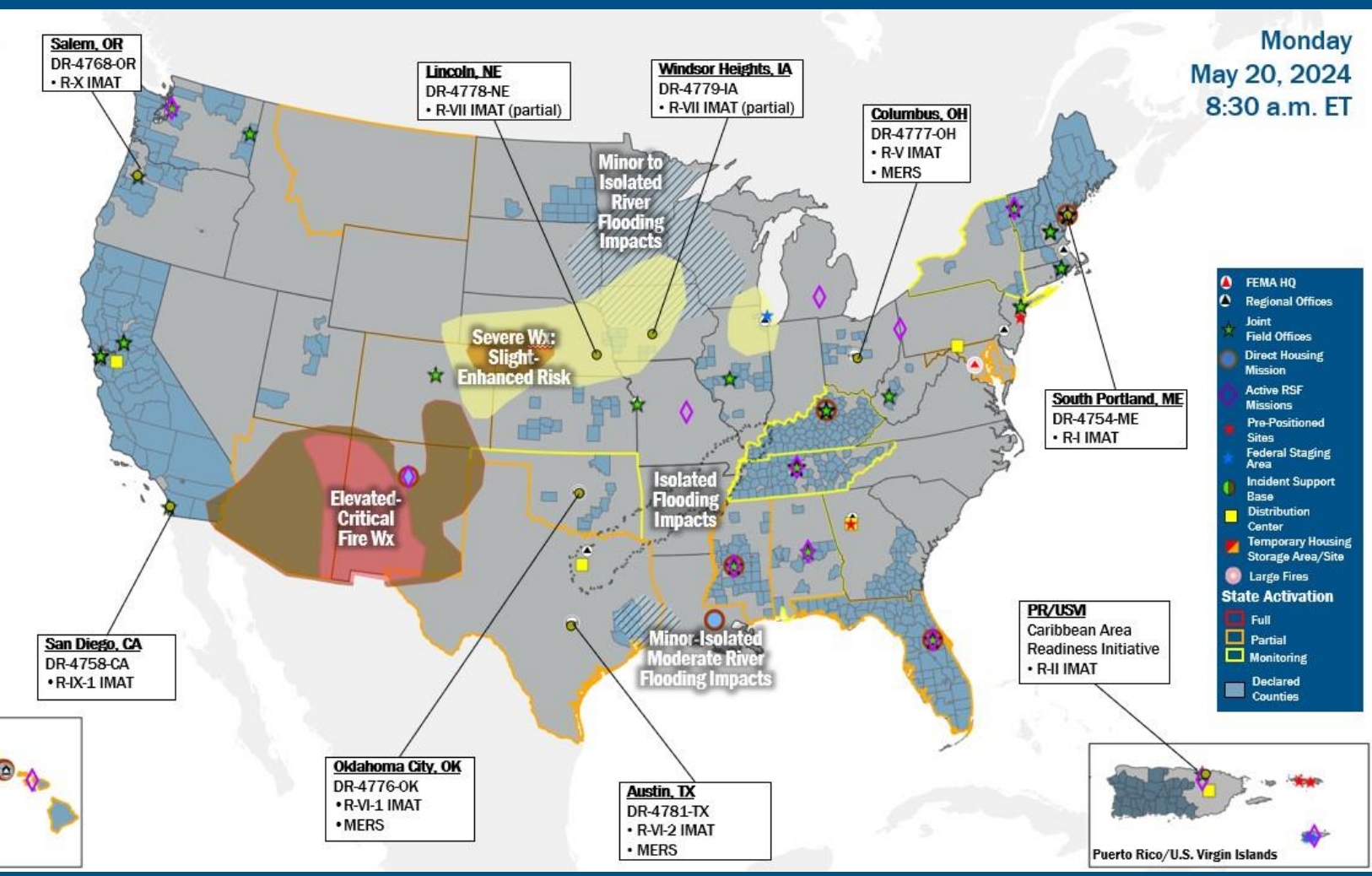
4-6 Teams Available

I	ME
II	PR/USVI
III	3
IV-1	
IV-2	2
V	OH
VI-1	OK
VI-2	TX
VII	NE / IA
VIII	1
IX-1	CA
IX-2	Personnel
X	OR

 Fully Mission Capable (FMC)
 Partially Mission Capable (PMC)
 Not Mission Capable (NMC)
 Deployed

REGIONAL BREAKDOWN

	JFO/VJFO	DR	EM
I	4/0	16	1
II	1/1	3	0
III	1/0	1	0
IV	5/0	19	0
V	1/0	3	0
VI	0/0	2	0
VII	0/1	3	0
VIII	0/1	2	0
IX	3/1	18	0
X	3/1	8	0



Legend

- FEMA HQ
- Regional Offices
- Joint Field Offices
- Direct Housing Mission
- Active RSF Missions
- Pre-Positioned Sites
- Federal Staging Area
- Incident Support Base
- Distribution Center
- Temporary Housing Storage Area/Site
- Large Fires
- State Activation
 - Full
 - Partial
 - Monitoring
 - Declared Counties

IM Workforce

13,577 (-78) Assigned
 4,705 (-90) Unavailable
 5,720 (+13) Deployed

23% / 3,152 (-1) Available

IM Cadre Availability

12 Cadres ≤ 25% Availability

Alternative Dispute Resolution: 23% (8/35); External Affairs: 20% (98/497); Environmental Planning and Historic Preservation: 17% (129/781); Field Leadership: 11% (16/147); Hazard Mitigation: 19% (229/1,236); Human Resources: 19% (34/178); Individual Assistance: 17% (442/2,586); Operations: 15% (47/322); Public Assistance: 20% (443/2,194); Planning: 6% (27/459); Safety: 9% (7/79); Security: 19% (26/135)

MERS

> 66%

36 Assigned
 0 Unavailable
 9 (+1) Deployed

27 (-1) Available

US&R

> 66%

28 Assigned
 2 Unavailable
 0 Deployed

26 Available

FCO

≤ 1 Type I

49 Assigned
 5 Unavailable
 35 (25 FCOR) Deployed

9 Available

Joint Preliminary Damage Assessments

Region	State / Location	Incident	IA	Number of Counties		Start - End
			PA	Requested	Complete	
I	NH	Severe Storms and Flooding Apr 3 & continuing	IA	0	0	N/A
			PA	10	0	5/6 - TBD
IV	TN	Severe Storms, Tornadoes, Winds, and Flooding May 8-9	IA	5	0	5/17 - TBD
			PA	0	0	N/A
	FL	Severe Storms and Tornadoes May 10	IA	1	0	5/12 - TBD
			PA	9	8	5/12 - TBD
X	AK	Fires Apr 9 and continuing	IA	0	0	N/A
			PA	2	0	5/20 - TBD



FEMA

Declaration Requests in Process – 9

State / Tribe / Territory – Incident Description	Type	IA	PA	HM	Requested
OH – Train Derailment	DR	X	X	X	Jul 3
SBKN* – Severe Storms and Flooding	DR		X	X	Mar 21
KY – Severe Storms, Straight-Line Winds, Tornadoes, Landslides, and Mudslides	DR	X		X	Apr 20
ME – Severe Storms	DR		X	X	May 2
WV – Severe Storms, Straight-line Winds, Tornadoes, Flooding, Landslides, and Mudslides	DR	X	X	X	May 3
NE – Severe Winter Storms and Straight-line Winds	DR		X	X	May 6
SC – Severe Storm and Straight-line Winds	DR	X			May 7
MS – Severe Storms, Straight-Line Winds, Tornadoes, and Flooding	DR	X		X	May 9
WV – Severe Storm, Flooding, Landslides, and Mudslides	DR		X	X	May 9

*Sycuan Band of the Kumeyaay Nation



FEMA



FEMA

Helping people before, during, and after disasters.



Scan to subscribe to this briefing.