

FEMA National Watch Center

Daily Operations Briefing

Sunday, May 15, 2022

8:30 a.m. ET



FEMA

National Current Ops / Monitoring

New Significant Incidents / Ongoing Ops

- Wildfires
- Southwest Border Coordination Support – Washington, DC
- COVID-19

Hazard Monitoring

- Severe Thunderstorms possible – Southern Plains, Mid-Missouri/Mississippi Valley to the Ohio Valley
- Elevated Fire Weather – Southern to Central Plains

Disaster Declaration Activity

- No new declaration activity

Event Monitoring

- No significant events



FEMA

Hermit's Peak Fire – New Mexico

Fire Name (Co., ST)	FMAG #	Acres Burned	Percent Contained	Evacuations	Structures (Homes / Other)			Fatalities / Injuries
					Threatened	Damaged	Destroyed	
Hermit's Peak (San Miguel, NM)	5438-FM-NM	279,868 (+9,421)	27% (-2)	M: 25,939	H: 22,070	H: 13 (+2)	H: 318 (+37)	0 / 37
				V: 0	O: 0	O: 18 (+4)	O: 236 (+44)	

Current Situation: Evacuation orders were lifted for East Cinder, Mills Plaza, and West Las Vegas in San Miguel County; Gallinas Corridor began repopulation on May 12. Long term evacuations and closures of critical travel corridors including highways 518, 65, 94, 121, 434, and I-25 are possible under predicted conditions and modeled fire behavior. Air quality alerts exist throughout parts of NM. Anticipated fire containment date is July 31. (FEMA Region VI Incident Status Summary ICS 209A as of 5:18 p.m. ET, May 14)

Lifeline Impacts:

Safety and Security:

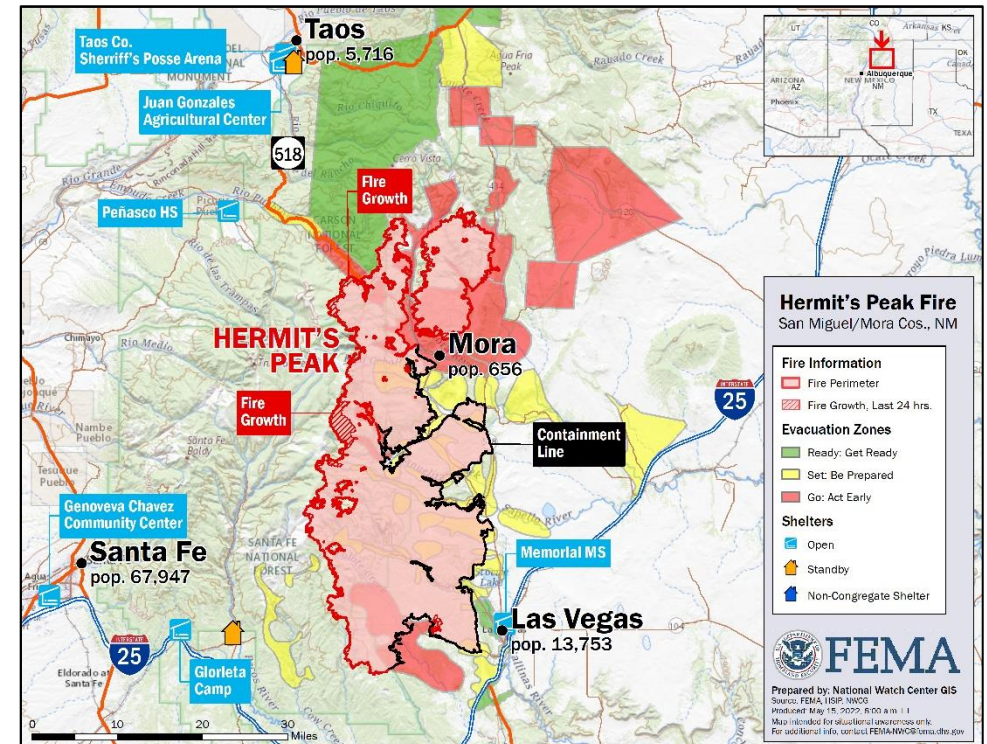
- Security guard services contracted for DRCs in Ruidoso, Las Vegas, and Glorieta

Food, Water, and Shelter:

- 6 shelters open with 662 (+2) occupants (ARC Morning Shelter Report as of 6:54 a.m. ET May 15)

Health and Medical:

- The Behavioral Health Institute in Las Vegas evacuated patients; re-entry began May 13



FEMA

National Watch Center

Cerro Pelado Fire – New Mexico

Fire Name (Co., ST)	FMAG #	Acres Burned	Percent Contained	Evacuations	Structures (Homes / Other)			Fatalities / Injuries
					Threatened	Damaged	Destroyed	
Cerro Pelado (Sandoval, NM)	Not requested	45,591 (+197)	40% (+17)	M: 733	H: 34	H: 0	H: 4	0 / 1
				V:0	O: 0	O: 0	O: 6	

Current Situation: The fire continues to burn 3 miles SW of Los Alamos National Laboratory (LANL). LANL continues aggressive fire mitigation work between LANL property and the northeast section of the fire. There was significant fuel mitigation on the south and southwestern boundaries of LANL. If the fire breaches the Alamo Trail, the LANL and the Los Alamos County townsite will move into “GO” evacuation posture. LANL is currently in “SET” posture. The fire has burned 849 acres on Pueblo de Cochiti land and 3,229 acres of Pueblo of Jemez land and is now 17-20 miles from the Pueblo proper. The fire entered tribal land of Santo Domingo Pueblo on May 10. There are currently no impacts to critical infrastructure in the Pueblo of Jemez and Santo Domingo Pueblo; the fire is restricted to wildland at this time. Estimated containment date is May 21.

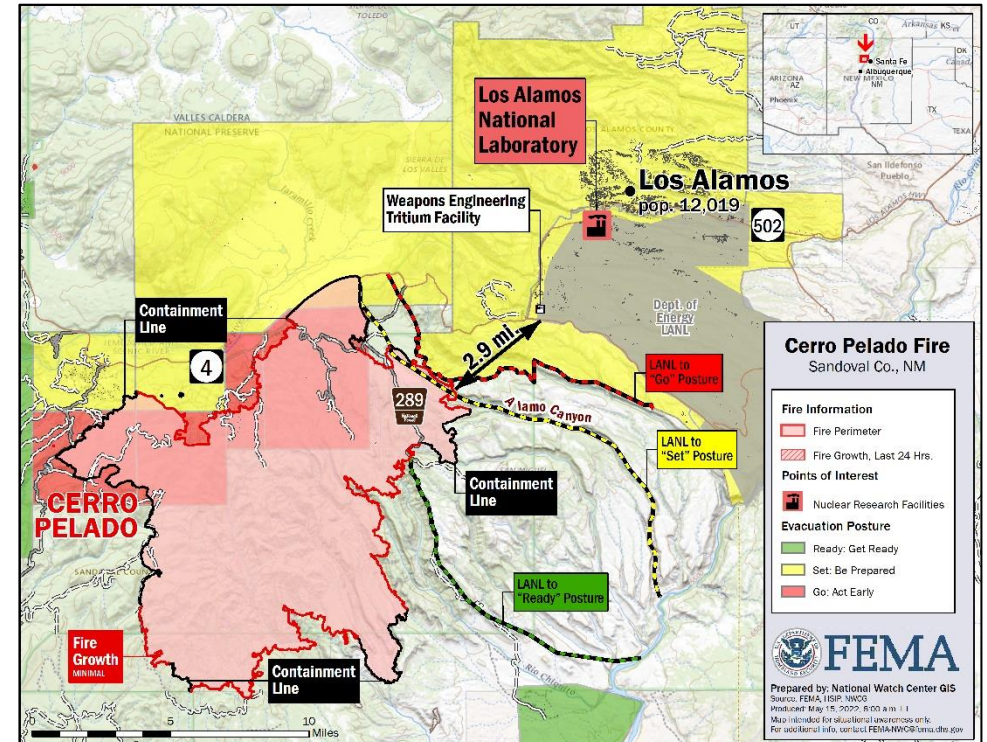
Lifeline Impacts (FEMA Region VI Incident Status Summary ICS 209A as of 5:18 p.m. ET, May 14)

Safety and Security:

- Fire restrictions at Stage 3: DOE and county-maintained trails are closed; campfires and grilling are prohibited; no use of firearms; no use of unpaved recreational areas

Hazardous Materials:

- The probability of nuclear or radiological incident due to the fire remains low



FEMA

National Watch Center

New Mexico Wildfires – Response



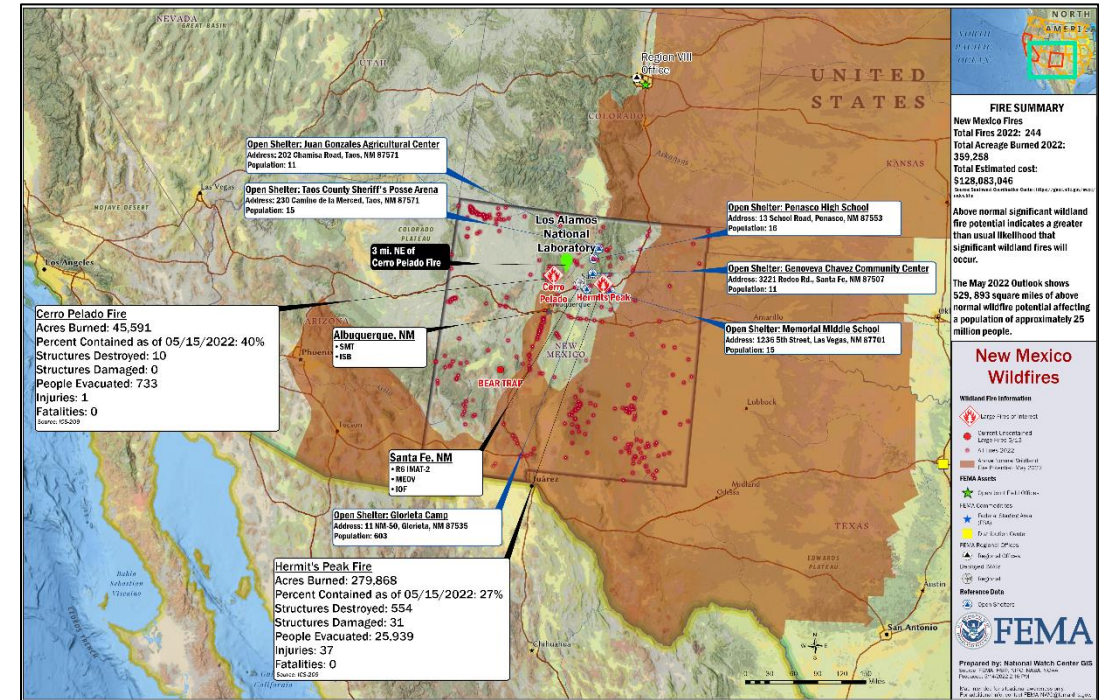
State / Local Response: (Region VI RRCC Incident Report – Final as of 6:58 p.m. ET, May 13)

- NM and LANL EOCs at Full Activation
- LANL at “SET” Evacuation posture; Laboratory will remain in maximum telework status until the fire is under control
- NM coordinating with CA on EMAC requests

FEMA / Federal Response:

FEMA Headquarters:

- NRCC at Level III (COVID-19); NWC continues to monitor
- Federal Staging Area (FSA)/Incident Support Base (ISB) are fully operational at the Albuquerque Expo Center with ISB/SMT teams, and IMAT equipment
- MERS: One MEOV and five MCOVs on site; 5 additional MCOVs requested; two arrived in Santa Fe, three to arrive May 14-15 for a total of 10 MCOVs; MCOVs being sent to support Ruidoso and Taos; coordinating to bring DSA and a MCOV to the Pojoaque Pueblo
- Generators transferred to USACE; 10 assessments complete; 7 installations complete, and 3 paused for fire safety
- The additional 30 pack of generators arrived at FSA/ISB on May 12 to meet the request for 26 generators.
 - One generator was installed at Holman Water Department and one generator is being installed at Holman Elementary School
- Major Disaster Declaration FEMA-4652-DR-NM was approved on May 4



Region VI:

- RRCC at Level III (day shift) with ESF-2, 3, 4, 6, 7, 11, 12, 15; RRCC to field transition coordination in progress – Estimated transition date: May 24
- Region VI IMAT-2 deployed to NM EOC
- DRC in Ruidoso expected to be fully operational on May 14; mobile DRC operations scheduled to begin May 14 in San Miguel, Santa Fe, and Taos counties (anticipated 3 total DRCs open by Saturday)
- 286 personnel deployed to FEMA-4652-DR-NM, including Disaster Survivor Assistance (DSA) personnel



FEMA

National Watch Center

Wildfire Summary

Fire Name (Co., ST)	FMAG #	Acres Burned	Percent Contained	Evacuations	Structures (Homes / Other)			Fatalities / Injuries
					Threatened	Damaged	Destroyed	
Hermit's Peak (San Miguel, NM)	5438-FM-NM	279,868 (+9,421)	27% (-2)	M: 25,939	H: 22,070	H: 13 (+2)	H: 318 (+37)	0 / 37
				V: 0	O: 0	O: 18 (+4)	O: 236 (+44)	
Cerro Pelado (Sandoval, NM)	Not requested	45,591 (+197)	40% (+17)	M: 733	H: 34	H: 0	H: 4	0 / 1
				V: 0	O: 0	O: 0	O: 6	
Coastal (Orange, CA)	5439-FM-CA	200	40%	M: 328	H: 2,100	H: 11	H: 20	0 / 0
				V: 0	O: 0	O: 0	O: 0	

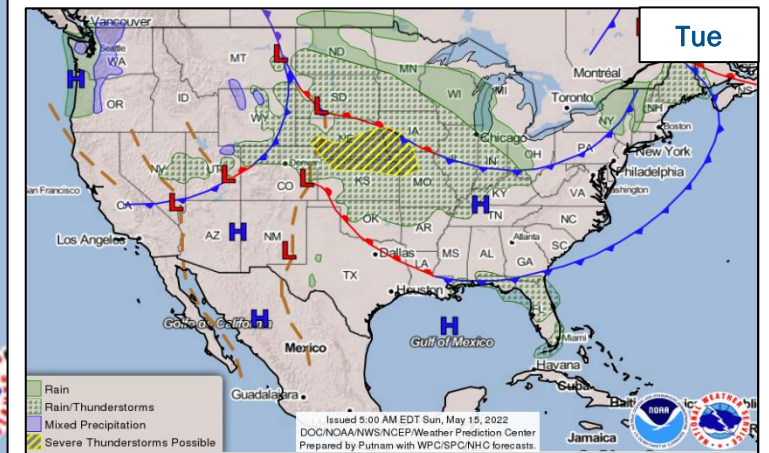
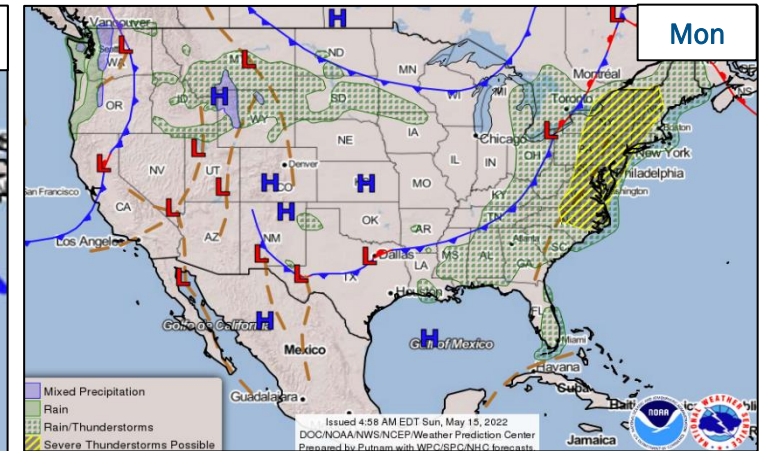
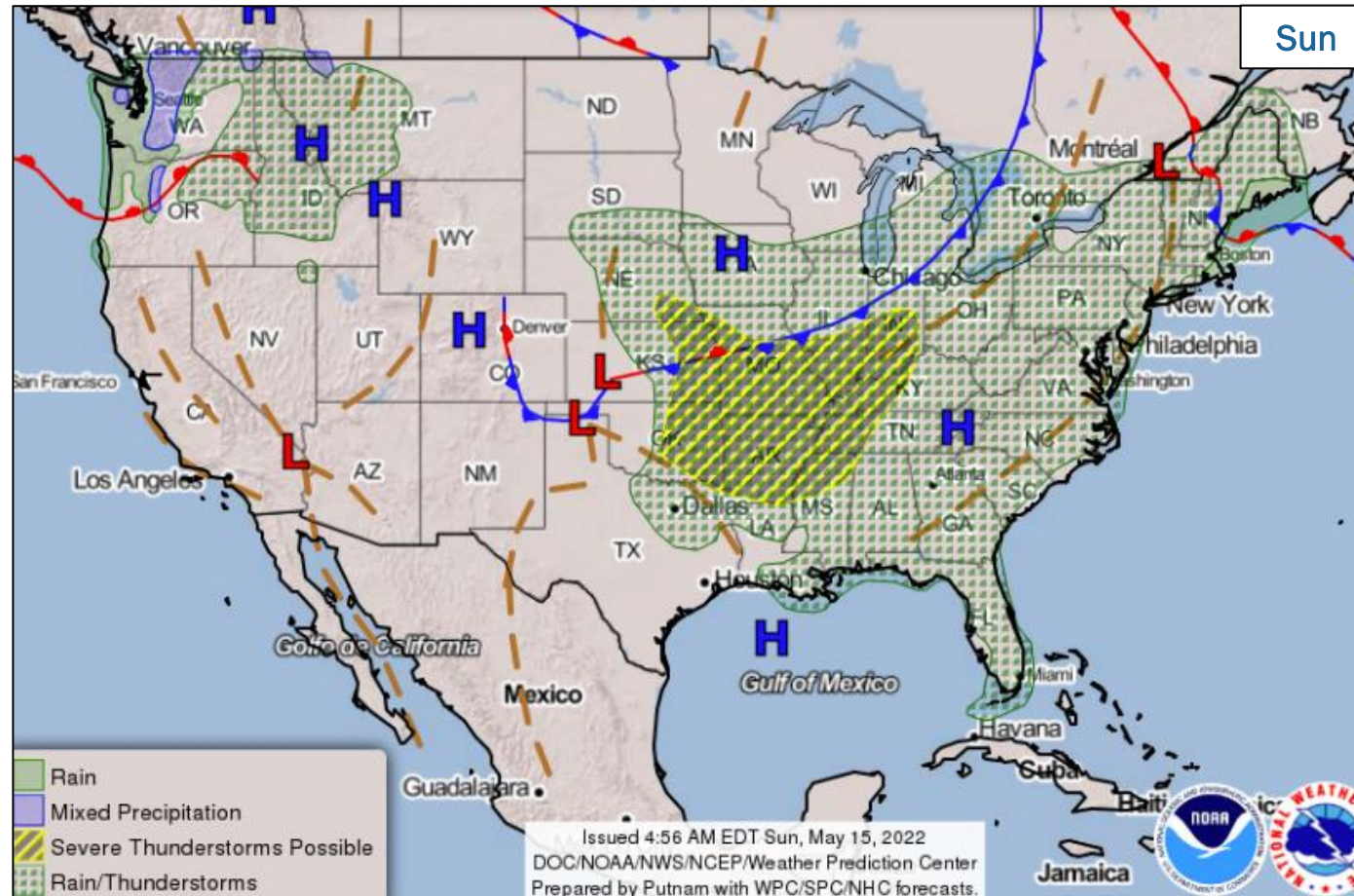
(Evacuations: M = Mandatory / V = Voluntary; Structures: H = Homes and Mixed Commercial/Residential / O = Non-residential Commercial/Other Minor Structures)



FEMA

National Watch Center

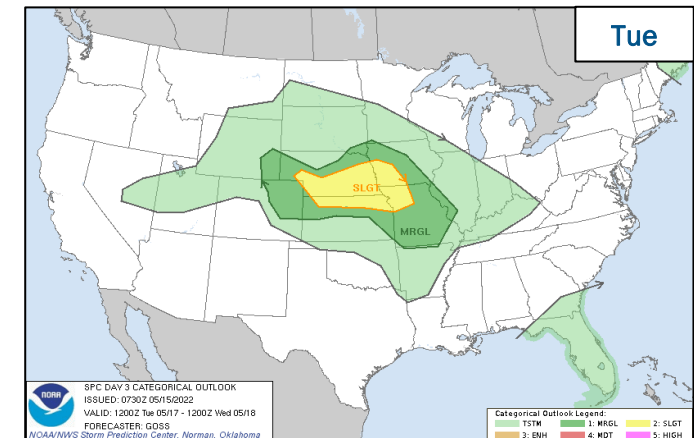
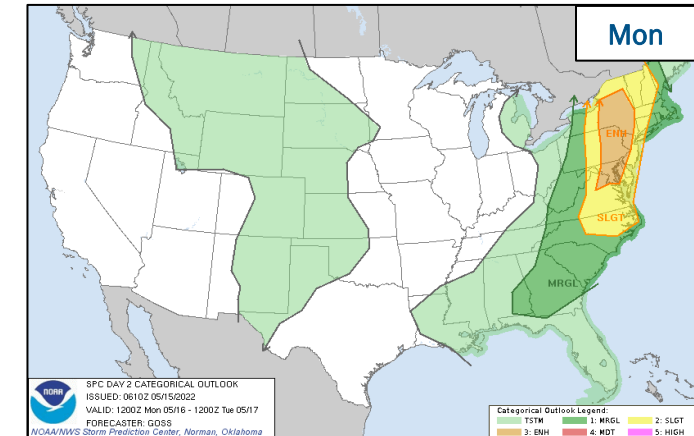
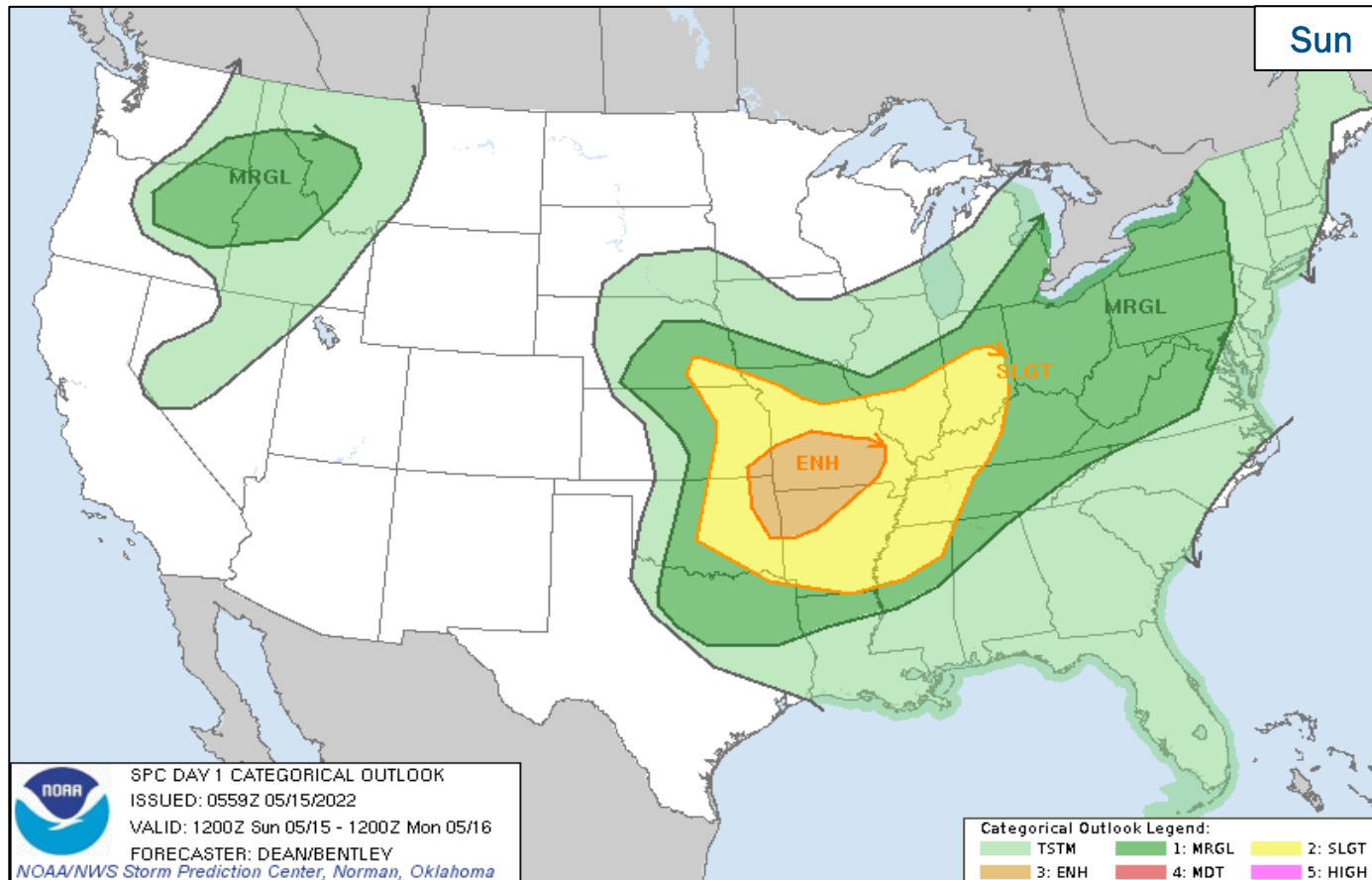
National Weather Forecast



FEMA

National Watch Center

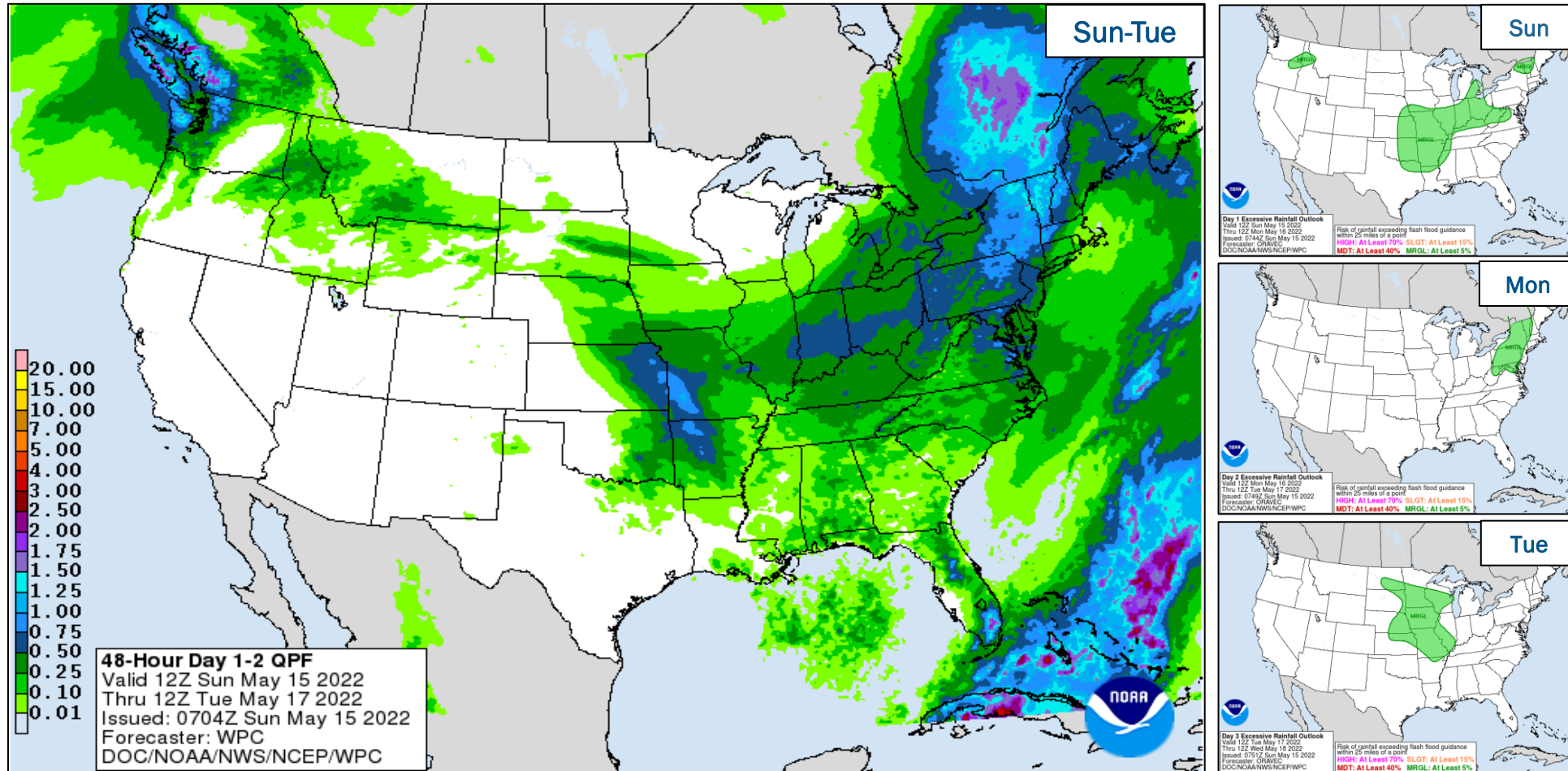
Severe Weather Outlook



FEMA

National Watch Center

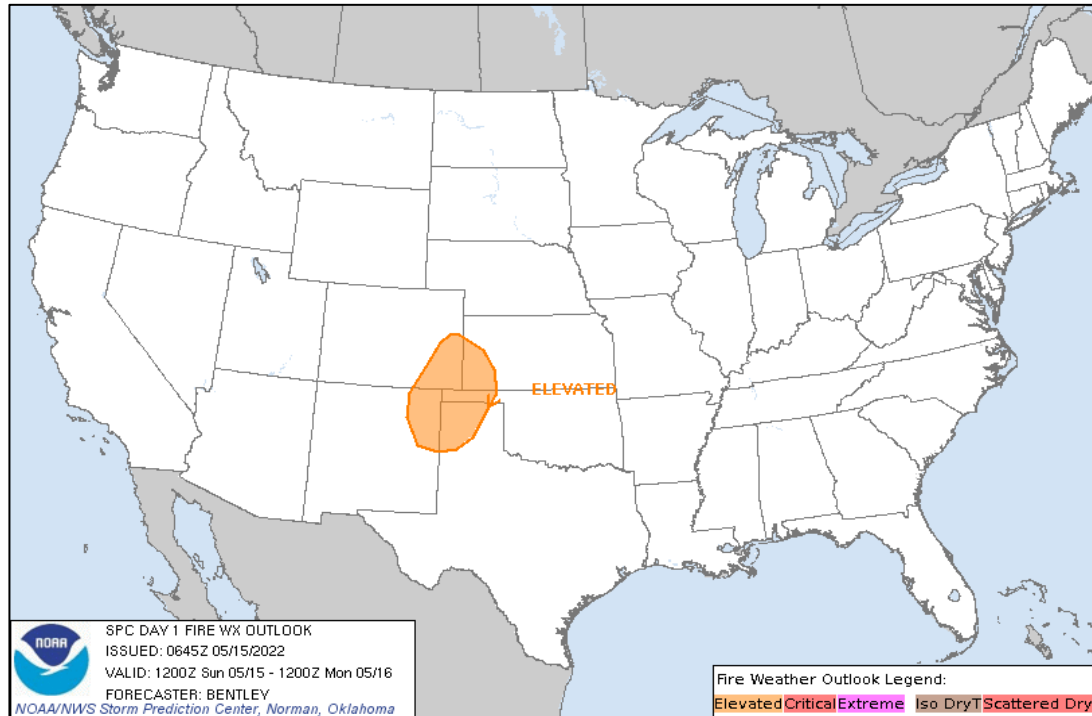
Precipitation & Excessive Rainfall



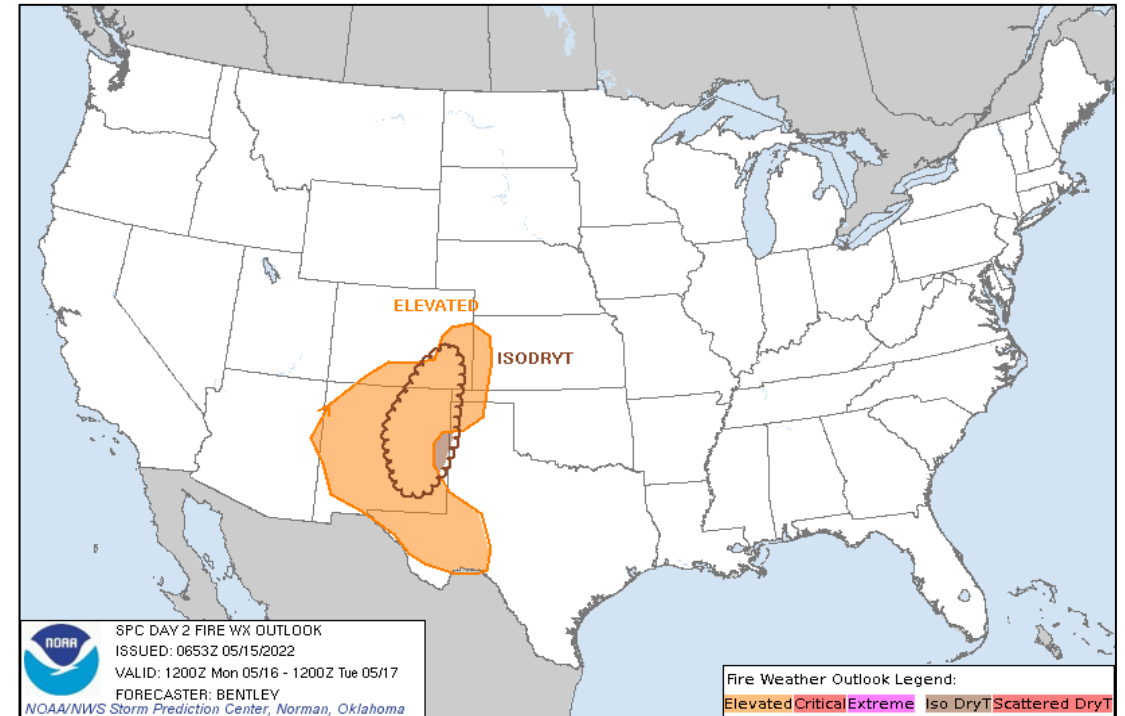
FEMA

National Watch Center

Fire Weather Outlook



Today



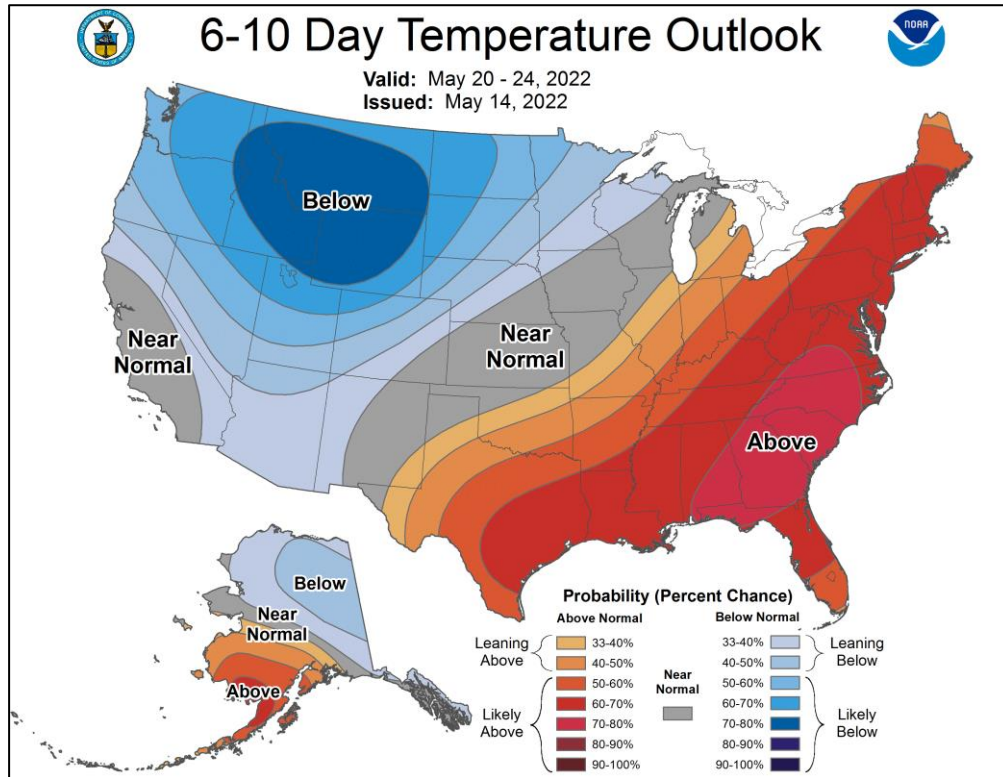
Tomorrow



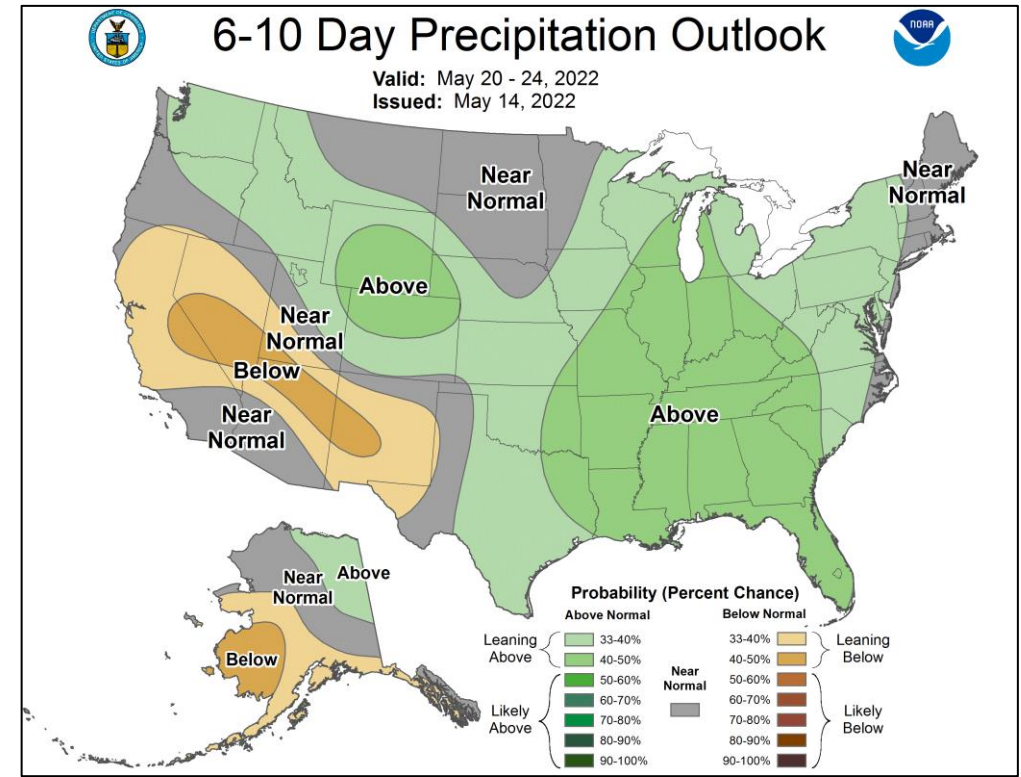
FEMA

National Watch Center

Long Range Outlooks – May 20-24



6-10 Day Temperature Probability



6-10 Day Precipitation Probability

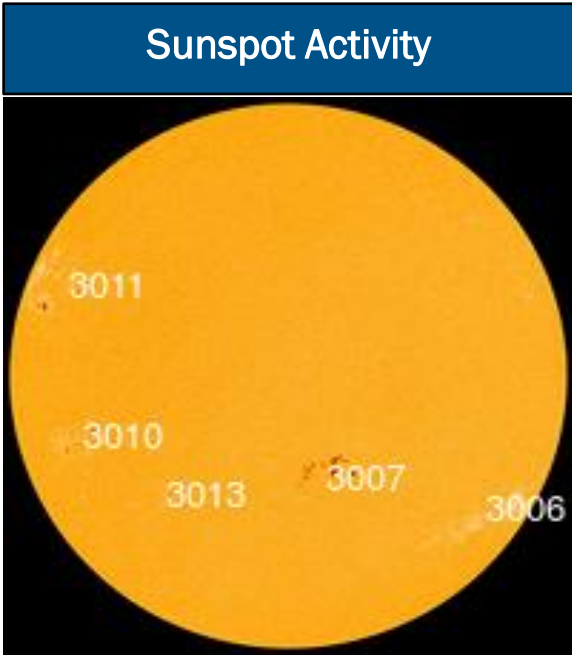
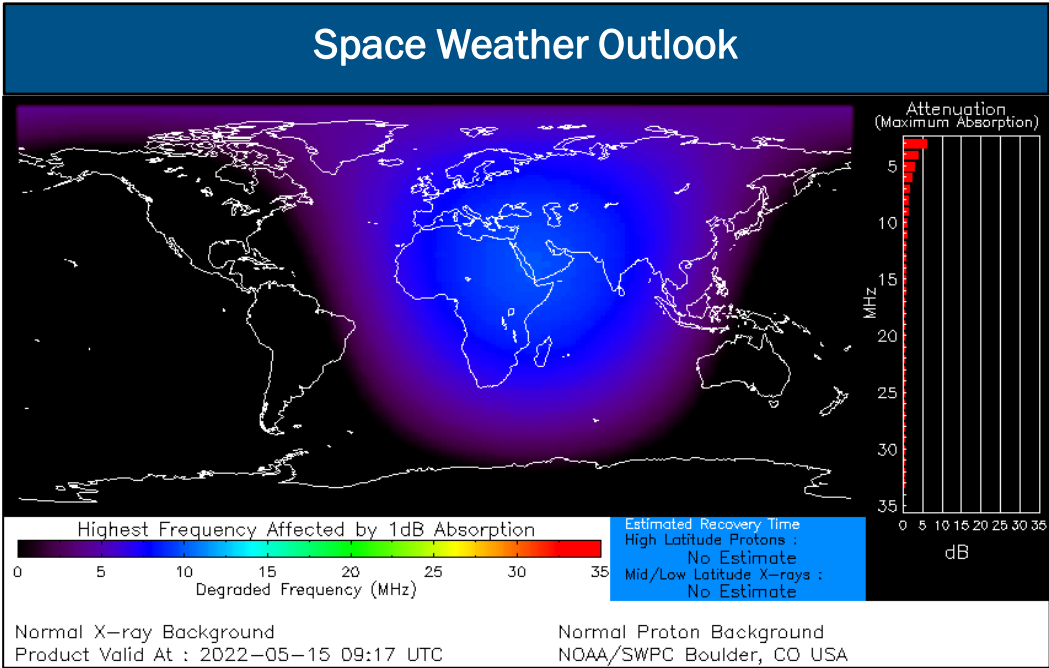


FEMA

National Watch Center

Space Weather Outlook

	Space Weather Activity	Geomagnetic Storms	Solar Radiation	Radio Blackouts
Past 24 Hours	None	None	None	R1
Next 24 Hours	None	None	None	None
For further information on NOAA Space Weather Scales refer to: http://www.swpc.noaa.gov/noaa-scales-explanation For further information on Sunspot Activity refer to: https://www.swpc.noaa.gov/phenomena/sunspotssolar-cycle				



FEMA

Joint Preliminary Damage Assessments

Region	State / Location	Incident	IA	Number of Counties		Start – End
			PA	Requested	Complete	
VI	MCN*	Severe Storm and Flooding May 4 and continuing	IA	1	0	5/6 – TBD
			PA	1	0	5/16 – TBD
	OK	Severe Storm and Flooding May 4 and continuing	IA	2	0	5/2 – TBD
			PA	0	0	

*MCN – Muscogee (Creek) Nation



FEMA

National Watch Center

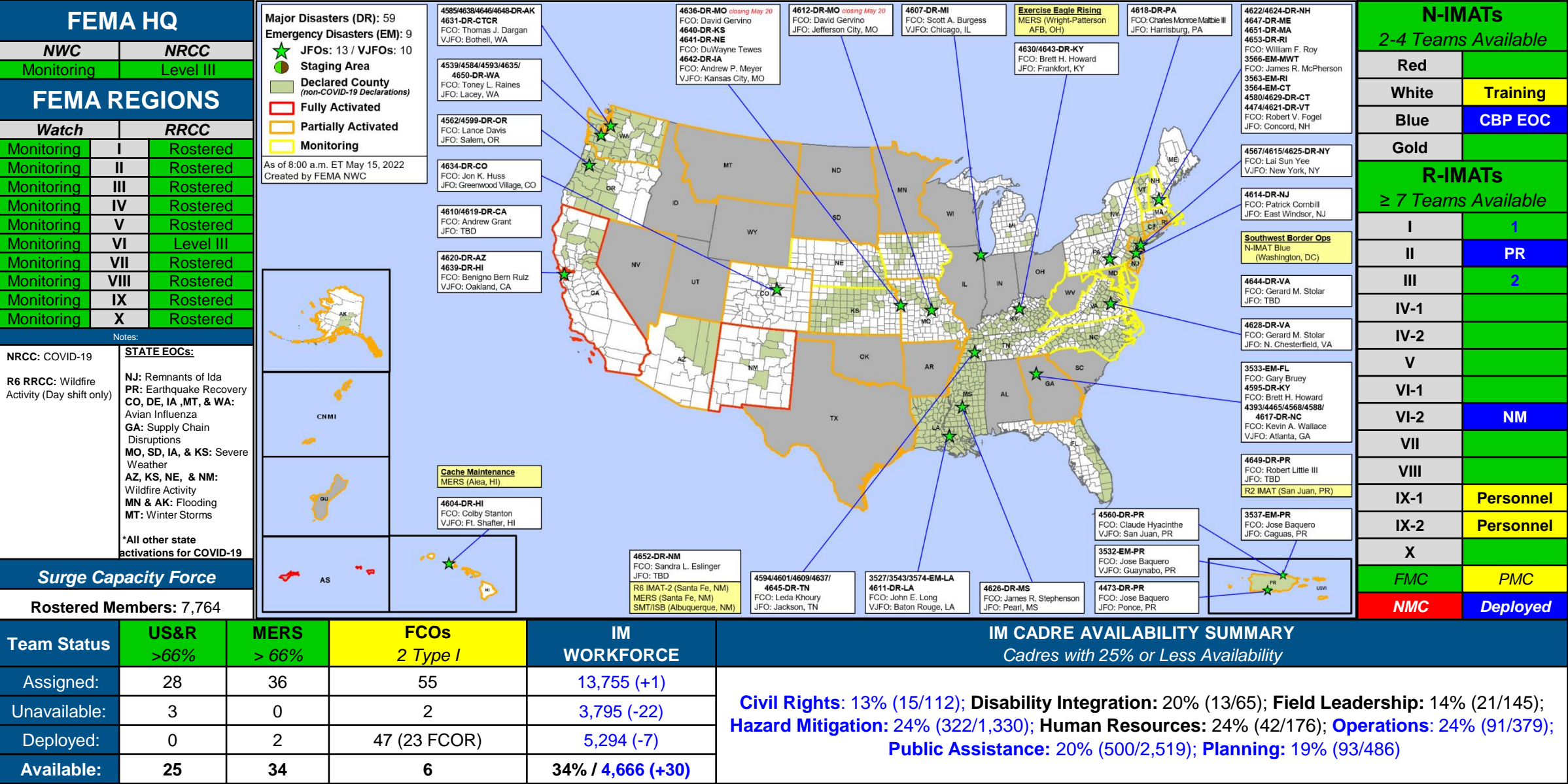
Declaration Requests in Process – 3

State / Tribe / Territory – Incident Description	Type	IA	PA	HM	Requested
MS – Severe Storm, Straight-line Winds, and Tornadoes	DR	X		X	Apr 28
MS – Severe Storm, Straight-line Winds, and Tornadoes	DR	X		X	Apr 29
KS – Winter Storms and Straight-line Winds	DR		X	X	May 3



FEMA

FEMA Common Operating Picture





FEMA

Helping people before, during, and after disasters.



Scan to subscribe to this briefing.