

FEMA National Watch Center

# Daily Operations Briefing

Thursday, May 12, 2022

8:30 a.m. ET



**FEMA**

# National Current Ops / Monitoring

---

## New Significant Incidents / Ongoing Ops

- Wildfires – New Mexico
- Southwest Border Coordination Support – Washington, DC
- COVID-19

## Hazard Monitoring

- Severe thunderstorms, heavy rain, and flash flooding – Northern Plains and Upper Mississippi Valley
- Critical fire weather–Southern/Central Plains and Central Rockies

## Disaster Declaration Activity

- FMAG approved – Coastal Fire, CA

## Event Monitoring

- No significant events



**FEMA**

# Coastal Fire – California

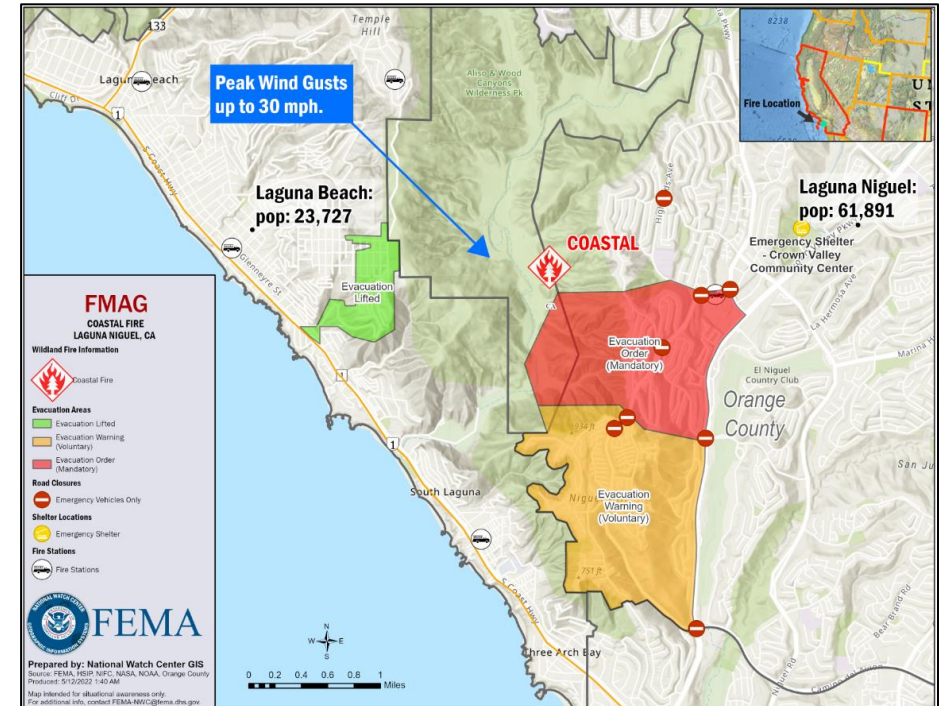
Fire Name (Co., ST)	FMAG #	Acres Burned	Percent Contained	Evacuations	Structures (Homes / Other)			Fatalities / Injuries
					Threatened	Damaged	Destroyed	
Coastal (Orange County, CA)	5439-FM-CA	200	0%	M: 5,200	H: 2,100	H: 0	H: 0	0 / 0
				V: 0	O: 0	O: 0	O: 0	

## Situation:

- Fire began on May 11 and is burning on state and private land in and around the communities of Laguna Beach, Aliso Canyon and Wood Canyon Wilderness State Park, and Laguna Niguel, in Orange County (population 3.2 million), CA
- Gusty winds (10 mph with gusts to 30 mph) and dry conditions (40% relative humidity) have allowed the fire to spread quickly; the winds are currently blowing the fires east into homes in Laguna Niguel
- Threatening 2,100 homes, the Coastal Water Treatment Plant (servicing Dana Point, Laguna Niguel, and Emerald Bay), high voltage power transmission lines, and the Aliso Canyon and Wood Canyon Wilderness State Park
- Orange County Care and Reception Center opened at the Crown Valley Community Center
- Local road closures in Laguna Niguel; Pacific Coast Highway remains open

## Response:

- CA EOC at Full Activation (COVID-19)
- Region IX RWC and the NWC continue to monitor
- FMAG approved May 12



FEMA

National Watch Center

# Hermit's Peak Fire – New Mexico

Fire Name (Co., ST)	FMAG #	Acres Burned	Percent Contained	Evacuations	Structures (Homes / Other)			Fatalities / Injuries
					Threatened	Damaged	Destroyed	
Hermit's Peak (San Miguel, NM)	5438-FM-NM	236,939 (+33,019)	33% (-10)	M: 25,939	H: 22,096 (+1,590)	H: 10	H: 238 (+9)	0 / 32 (+2)
				V: 0	O: 0	O: 8 (+3)	O: 158 (+3)	

**Current Situation:** The fire has crossed another section of Highway 518 near Holman Hill and moved towards Chacon. It was forecast to be 1-2 miles from the Colfax County line by the end of the day May 11. Structure protection continues in the highway corridors, and canyon communities and crews will work north as the fire progresses into newly impacted areas, including Taos and Colfax counties. The fire continues to move into the Pecos Wilderness towards Lone Pine Mesa, Blue Bell Ridge, and further up Enchantment Lake. (Region VI RRCC Incident Report as of 5:00 p.m. ET, May 11). Anticipated containment date is July 31.

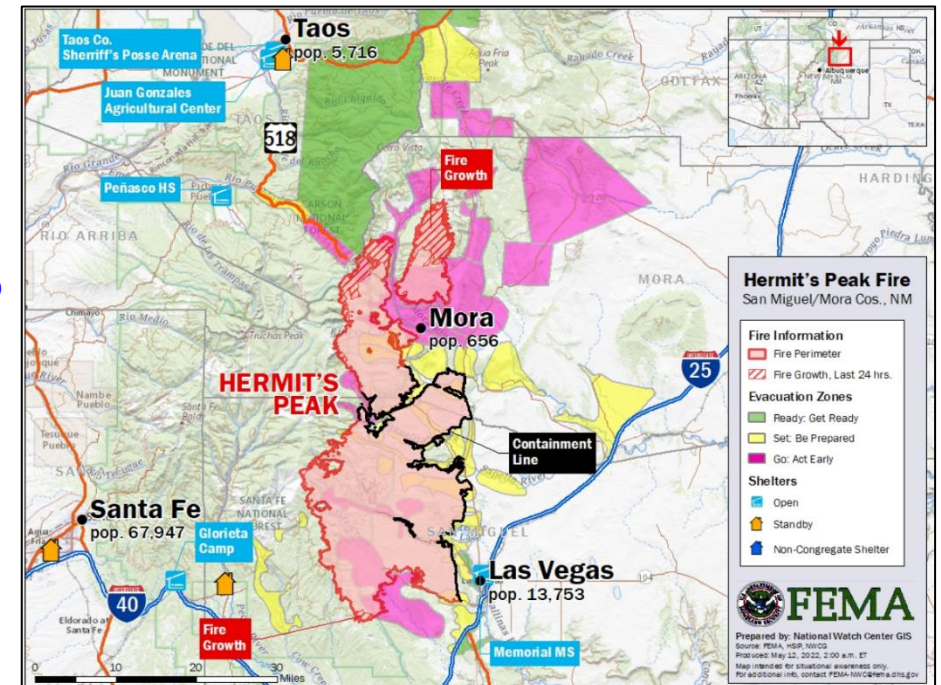
**Lifeline Impacts:** (Region VI RRCC Incident Report as of 5:00 p.m. ET, May 11)

## Safety and Security:

- Initial damage assessments from imagery indicate 309 structures destroyed; 169 single-family homes, 110 manufactured homes, and 30 non-traditional homes are damaged

## Food, Water, and Shelter:

- 7 shelters open with 810 occupants
- Health and Medical:**
- Two nursing homes were evacuated (one with minimal patients remaining) in Los Alamos and the Los Alamos Medical Center evacuated 7 patients (the emergency room remains open)



FEMA

National Watch Center



# Cerro Pelado Fire – New Mexico

Fire Name (Co., ST)	FMAG #	Acres Burned	Percent Contained	Evacuations	Structures (Homes / Other)			Fatalities / Injuries
					Threatened	Damaged	Destroyed	
Cerro Pelado (Sandoval, NM)	No FMAG Requested	43,376 (+885)	11%	M: 732	H: 34	H: 0	H: 4	0 / 1
				V: 0	O: 0	O: 0	O: 6	

**Current Situation:** The fire continues to burn 3 miles SW of Los Alamos National Laboratory (LANL). There was limited growth and movement of the fire overnight on May 10. There will be heavy air response and presence at TA-49 as water is drafted from the TA-49 dip tank and dropped into the Alamo Canyon to reduce fire spread and keep it from progressing into Frijoles Canyon. Air crews continue air operations, weather permitting, with drone support at night. If the fire breaches Alamo Canyon, both LANL and the Los Alamos County townsite will move into a Go evacuation stage. LANL and Los Alamos County consider the fire in the Alamo Canyon a controlled fire and the wind is pushing the fire away from the lab. LANL is current in Set status.

The fire has burned 647 acres on Pueblo de Cochiti land and 2,664 acres of Pueblo of Jemez land and is now 17-20 miles from the Pueblo proper. The fire entered tribal land of Santo Domingo Pueblo on May 10. There are currently no impacts to critical infrastructure in the Pueblo of Jemez and Santo Domingo Pueblo; the fire is restricted to wildland at this time. Estimated containment date is May 21. *Region VI RRCC Incident Report as of 5:00 p.m. ET, May 11)*

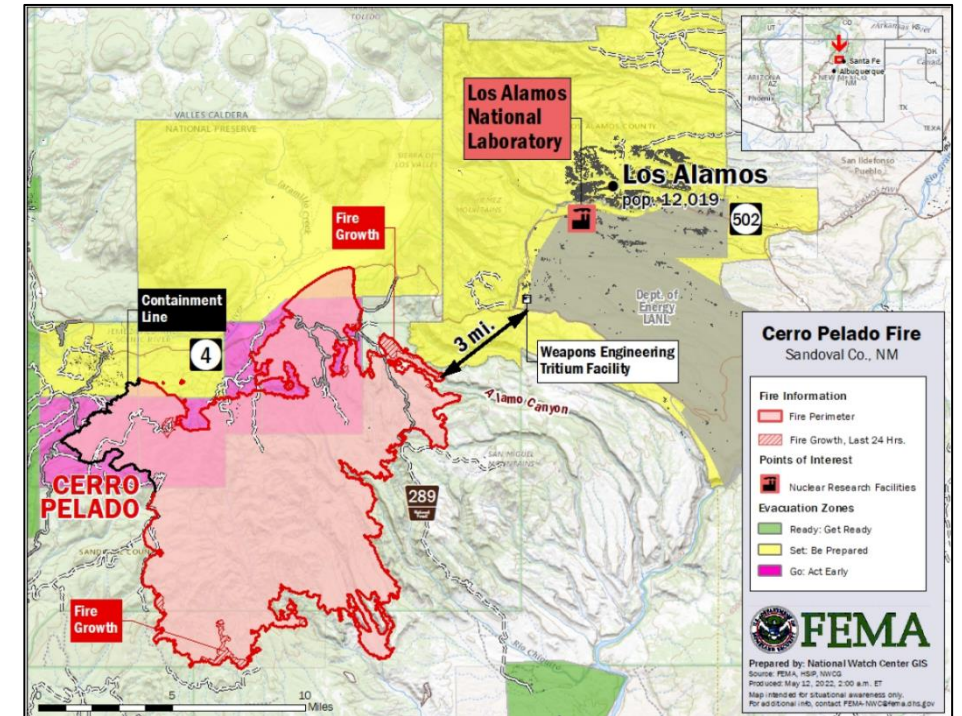
**Lifeline Impacts** (*Region VI RRCC Incident Report as of 5:00 p.m. ET, May 10*)

## Safety and Security:

- Fire restrictions at Stage 3: DOE and county-maintained trails are closed to recreational use; campfires and charcoal grilling are prohibited; no use of firearms, firing ranges, or ammunition; no use of unpaved recreational areas.; LANL has firefighting equipment on site

## Hazardous Materials:

- The possibility of any nuclear or radiological incident due to the fire remains low



FEMA

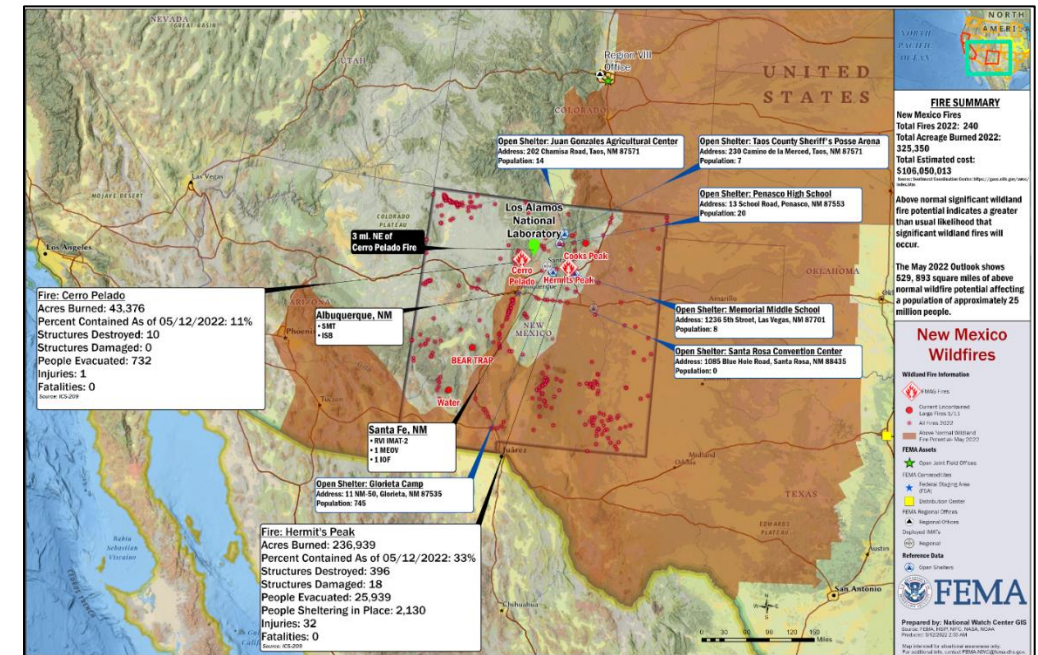
National Watch Center

Safety and Security    Food, Water, Sheltering    Health and Medical    Energy Power & Fuel    Communications    Transportation    Hazardous Materials

- NM and LANL EOCs at Full Activation
- LANL at “Set” Evacuation Phase; Laboratory will remain in maximum telework status until the fire is under control
- NM coordinating with CA on EMAC requests

- NRCC at Level III (COVID-19); NWC continues to monitor
- Federal Staging Area (FSA)/Incident Support Base (ISB) is fully operational at the Albuquerque Expo Center with ISB/SMT teams, cache, commodities (water, meals, cots, blankets, shuttles), 29 generators, 1 BOM kit at GSB, 10 Disaster Recovery Center (DRC) kits, and IMAT equipment
- MERS: One Mobile Emergency Operations Vehicle (MEOV) , and five Mobile Communications Office Vehicles (MCOV) are on site; 5 additional MCOVs were requested; two to arrive in Santa Fe by May 13, three to arrive May 14-15 MCOVs are being sent to support Ruidoso and Taos; coordinating to bring DSA and a MCOV to the Pojoaque Pueblo
- ESF-3 USACE Planning Response Team (PRT) and 249<sup>th</sup> Engineering Battalion are on-site at FSA/ISB
- Generators transferred to USACE; 3 assessments/installations complete; 7 assessments pending
- Additional 30 pack of generators is being shipped to the FSA/ISB to meet the request for 26 generators; requested delivery date is May 13
- Major Disaster Declaration FEMA-4652-DR-NM was approved on May 4 for wildfires

- RRCC at Level III (day shift only) with ESF-2, 3, 4, 6, 7, 11, 12, 15; RRCC to field transition coordination in progress
- Region VI IMAT-2 deployed to NM EOC
- 5 JFO kits on site
- 202 personnel deployed to FEMA-4652-DR-NM, including Disaster Survivor Assistance (DSA) personnel

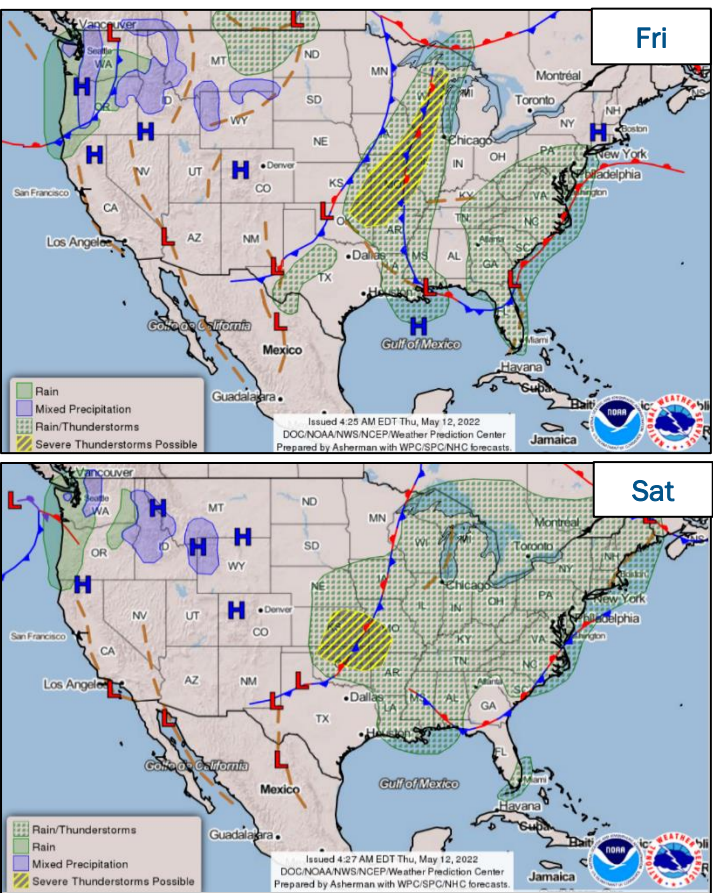
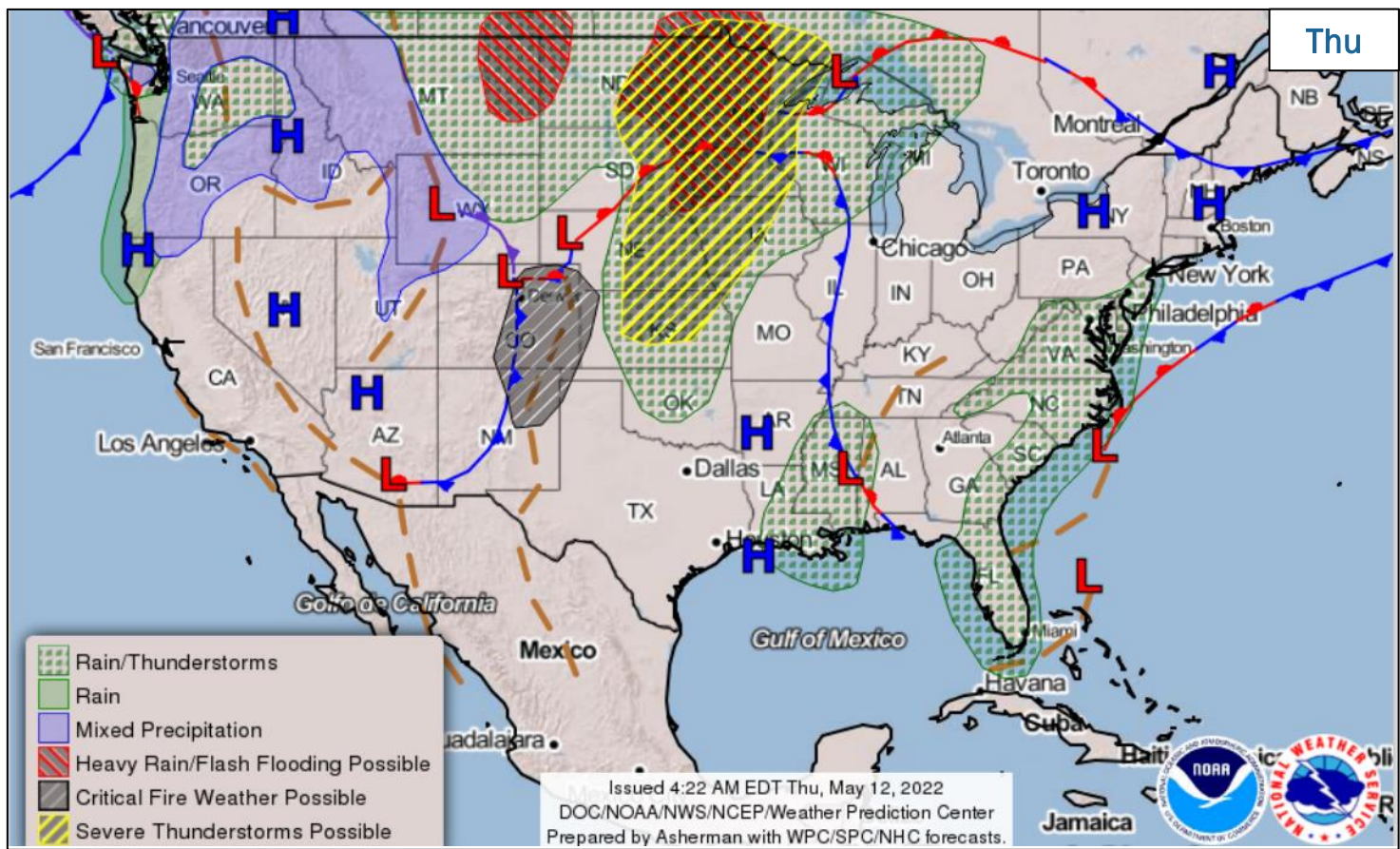


# FEMA

National Watch Center

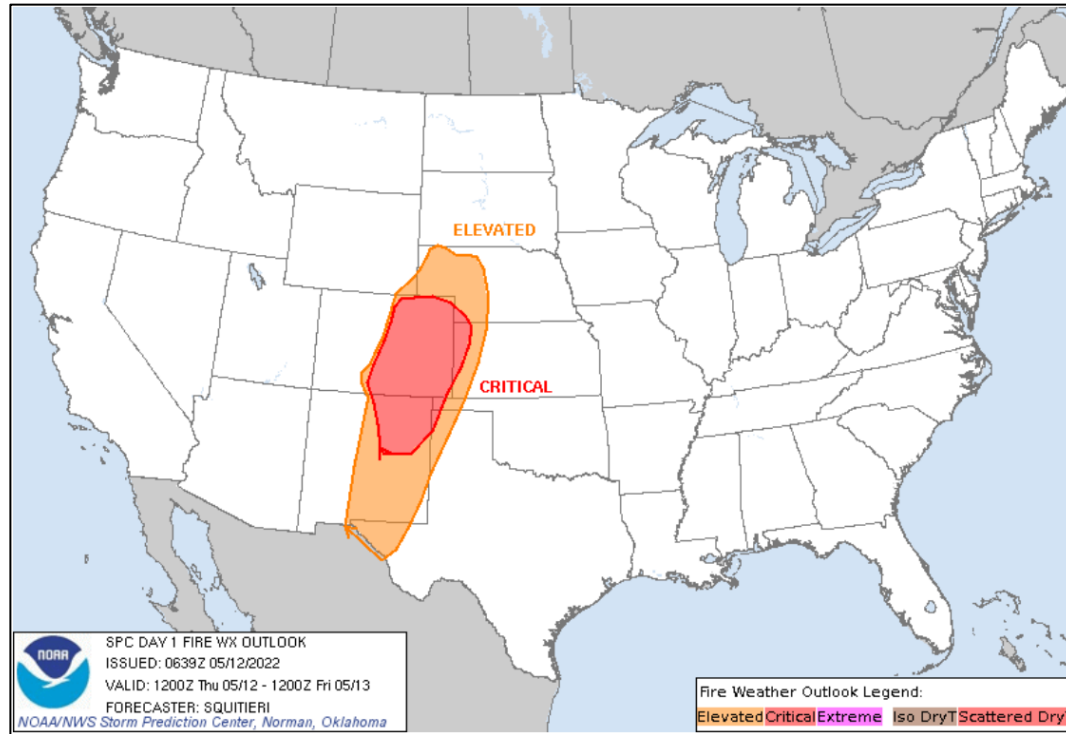


# National Weather Forecast

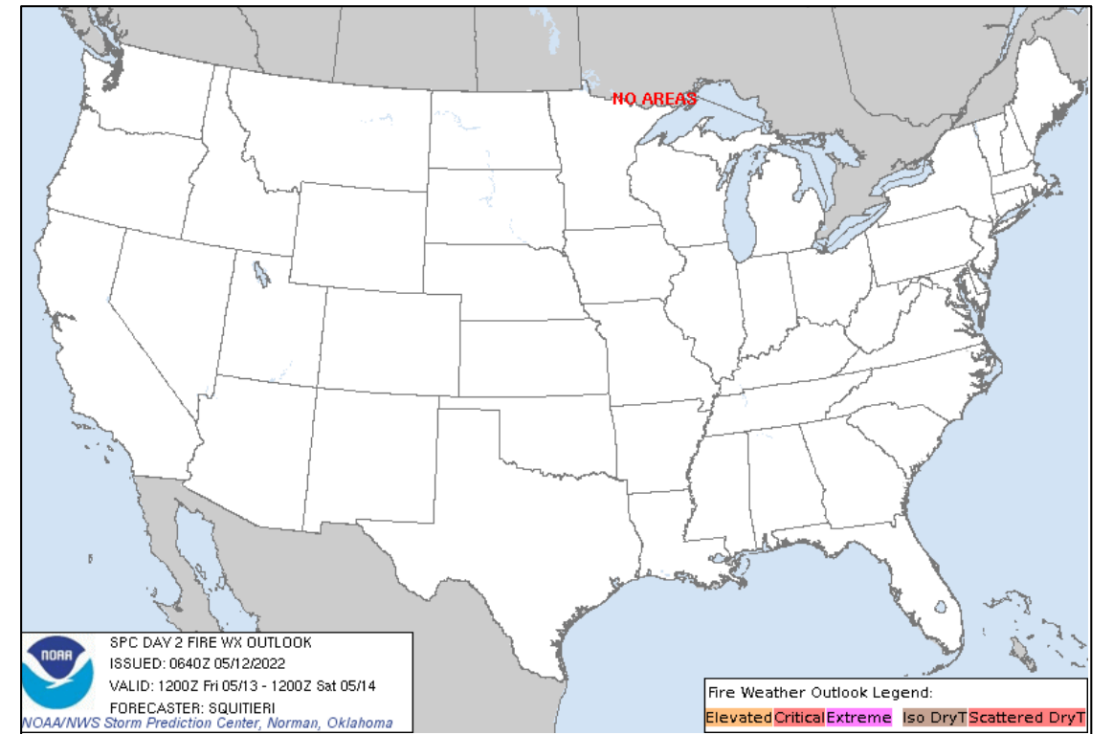


FEMA

# Fire Weather Outlook



Today



Tomorrow

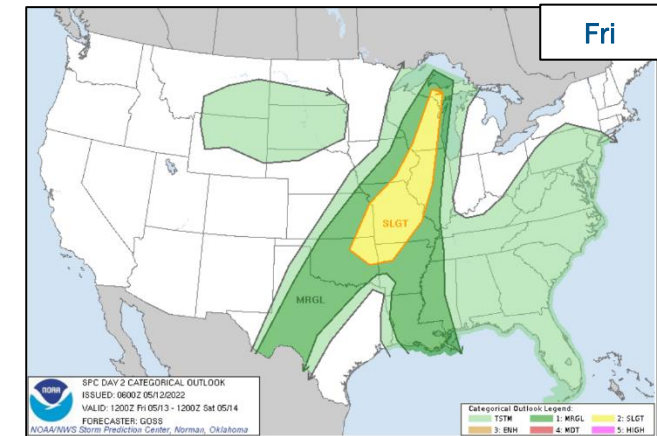
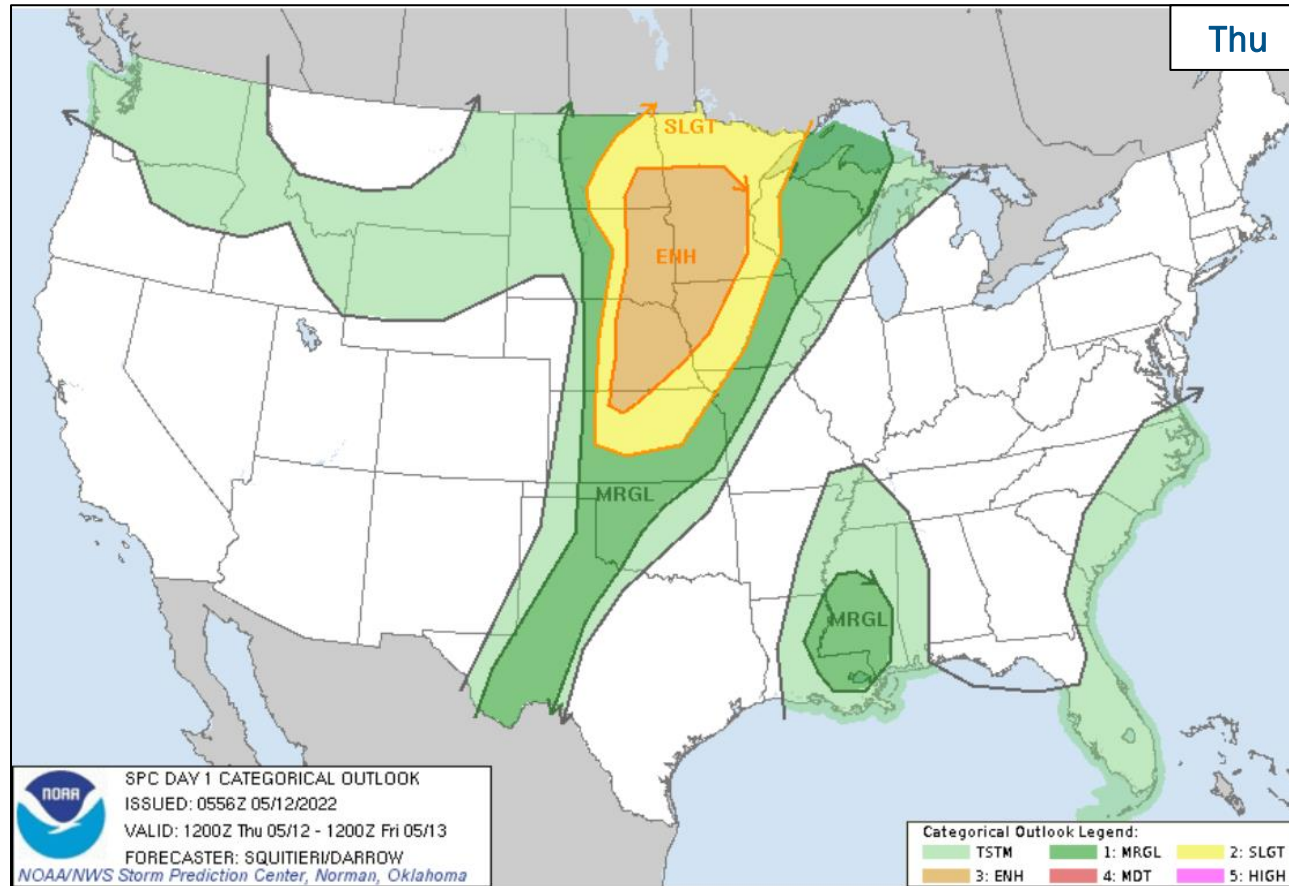


FEMA

National Watch Center



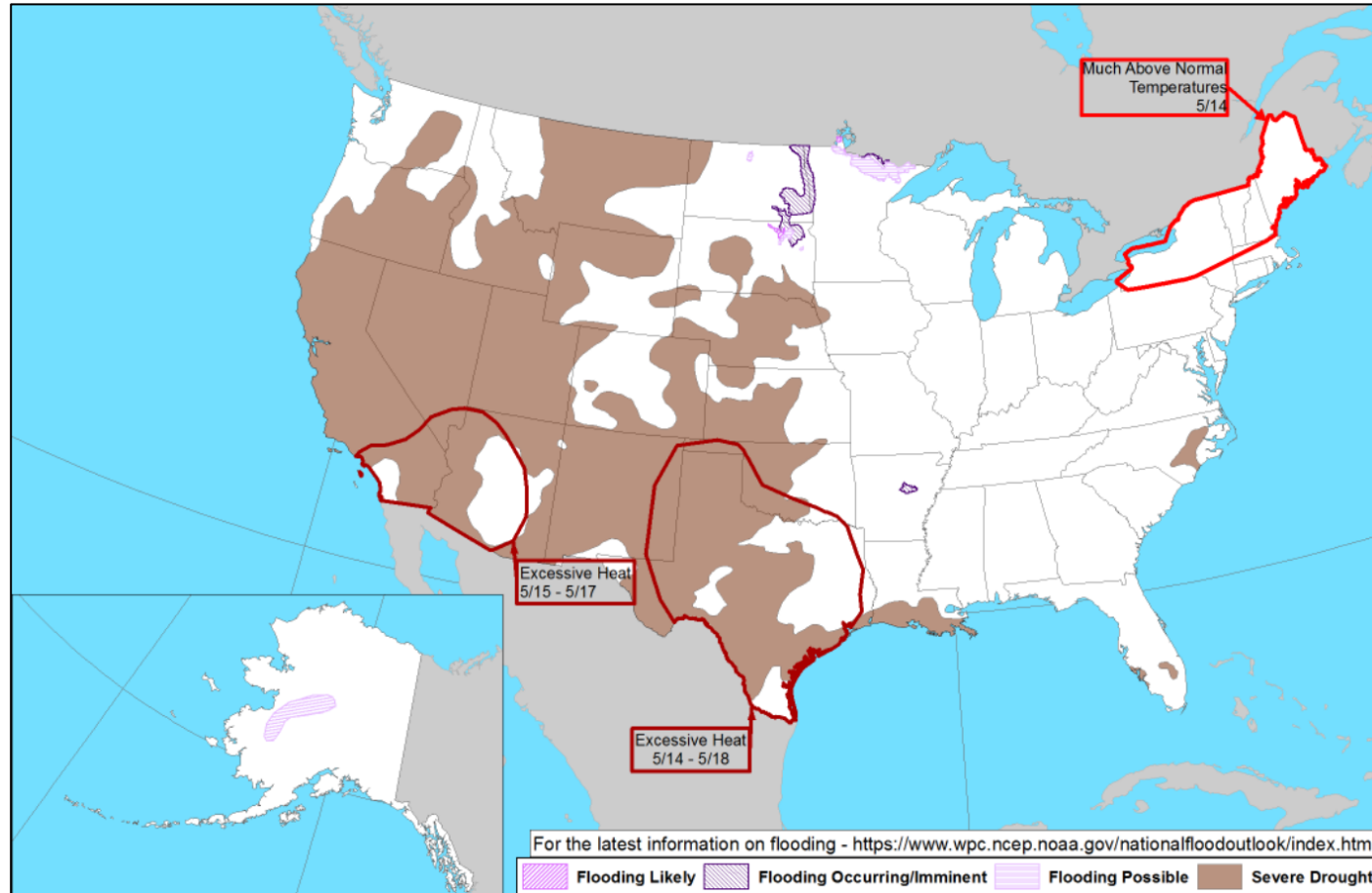
# Severe Weather Outlook



FEMA

National Watch Center

# Hazards Outlook – May 14 - 18



FEMA

# Joint Preliminary Damage Assessments

Region	State / Location	Incident	IA	Number of Counties		Start – End
			PA	Requested	Complete	
VI	OK / MCN*	Severe Storm and Flooding May 4 and continuing	IA	0	0	N/A
			PA	1	0	05/16 - TBD

\*MCN – Muscogee (Creek) Nation



FEMA

National Watch Center



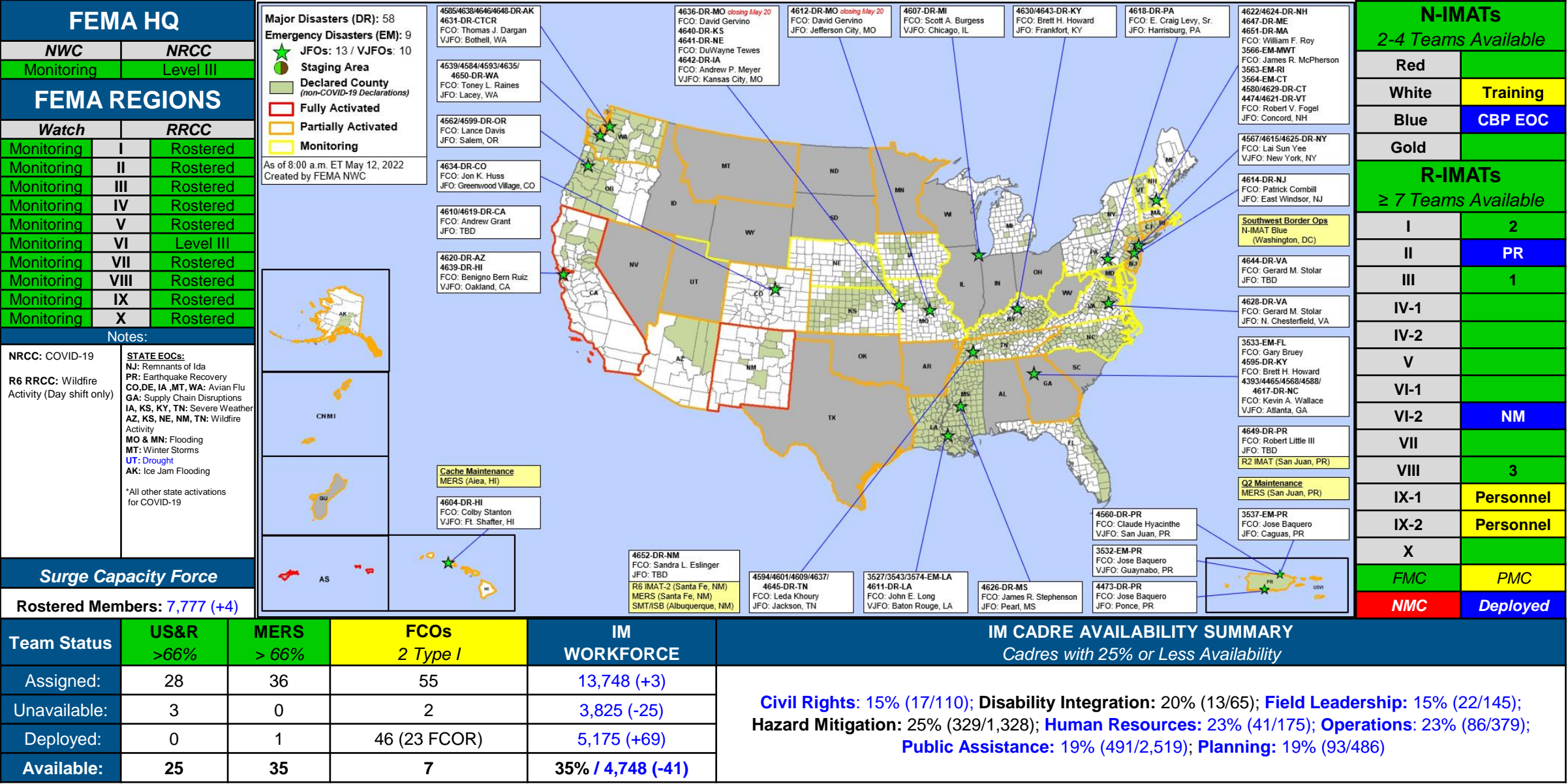
# Declaration Requests in Process – 4

State / Tribe / Territory – Incident Description	Type	IA	PA	HM	Requested
RI – Severe Winter Storm and Snowstorm	DR		X	X	Apr 12
MS – Severe Storm, Straight-line Winds, and Tornadoes	DR	X		X	Apr 28
MS – Severe Storm, Straight-line Winds, and Tornadoes	DR	X		X	Apr 29
KS – Winter Storms and Straight-line Winds	DR		X	X	May 3



**FEMA**

# FEMA Common Operating Picture



# FCO Gerry Stolar - Senior Leadership COP Brief: FEMA-4628-DR-VA

## INDIVIDUAL ASSISTANCE SUMMARY

## Registrations

### NA

# Individuals and Households Program

## NA

Small Business Admin  
Loans  
NA

## Housing Assistance

## NFIP Payouts

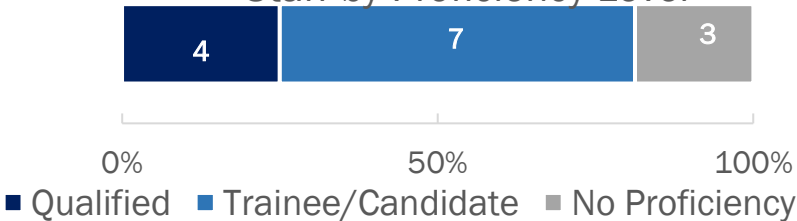
Other Needs Assistance  
NA

## Transitional Shelter Assistance

## STAFF SUMMARY

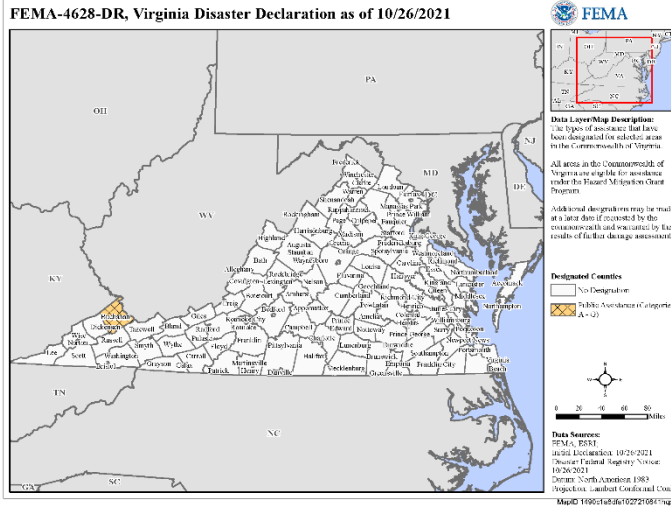
**Total Staff: 14 | Coach/Evaluators: 5**

## Staff by Proficiency Level



## INCIDENT SUMMARY

On October 26, 2021, a Major Disaster Declaration was approved for the Commonwealth of Virginia authorizing Public Assistance, Categories A – G, and assistance from the U.S. Small Business Administration (SBA) for Buchanan County. All counties in the Commonwealth of Virginia are eligible to apply for assistance under the Hazard Mitigation Grant Program (HMGP).



## FCO ASSESSMENT

## Priorities

- Provide integrated recovery strategies and outcomes focusing on equity and resilience
- Deliver Public Assistance and hazard Mitigation technical assistance to Buchanan County in partnership with the Commonwealth of Virginia

## Outcomes

- Restored, modernized, hardened, and resilient infrastructure
- Community engagement and communication strategy in place for long-term recovery

## PUBLIC ASSISTANCE SUMMARY

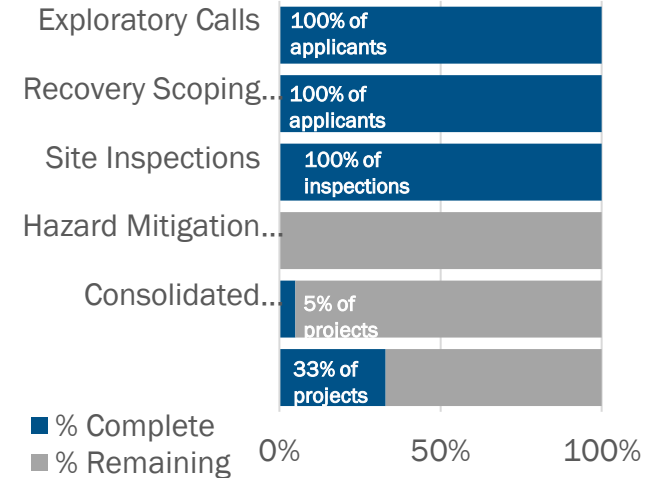
## Applicants 6

## Projects 21

\$ Obligated \$1.1M

Life of Disaster \$5.6M

## % of Phase Complete



## TRANSITION TIMELINE

**Individual Assistance : NA**

Public Assistance thru JUNE 2022

Hazard Mitigation thru JUNE 2022

Interagency Recovery Coordination thru JUNE 2022





# FCO Senior Leadership COP Brief

## Recovery Support Functions

Recovery Outcomes (RSF)		
Housing	<b>Housing: Adequate, resilient, accessible, and affordable housing</b>	
	1	All survivors whose primary residences were damaged or destroyed or were displaced by the disaster have returned and re-established residence in permanent housing within the affected community
	2	Survivors can afford post-disaster permanent housing units within the affected community without post-disaster assistance
	3	Post-disaster permanent housing units in the affected community meet or exceed recognized residential codes and standards and incorporate recommended mitigation measures appropriate to the area's hazards (e.g., flooding, fire, high winds), or include resiliency measures
	4	
	5	
Economic	<b>Economic: Sustainable, diversified and resilient economy</b>	
	1	Business activities are resumed and restored, including those local and marginalized businesses and major employers
	2	Local and state government ability to facilitate and regulate business activities is restored
	3	Tax base and revenue streams from businesses are restored
	4	Communities have Comprehensive Economic Development Strategies that measures the recovery process
	5	Financial activities essential to credit and insurance coverage and flows are restored
Community Planning & Capacity Building	<b>Community Recovery: Resilient recovery of SLTT communities</b>	
	1	Community Conditions Assessment + Community Profiles
	2	Status of emergency plans, such as the Mitigation plan and Pre-Disaster Recovery Plan
	3	Community engagement and communication strategy is in place for long-term recovery plan or strategy
	4	Mitigation and recovery projects have been implemented
	5	Inclusive communications strategy developed for long-term recovery planning or strategy

Recovery Outcomes		
Infrastructure Systems	<b>Infrastructure: Restored, modernized, hardened and resilient systems</b>	
	1	Power systems and fuel delivery services have been repaired, modernized, and strengthened for future disasters
	2	Water systems, dams, levees, and service capacities have been repaired, modernized, and strengthened for future disasters
	3	Communication systems and services have been repaired, modernized, and strengthened against future disasters
	4	Public and private transportation systems, to include those supporting marginalized areas are repaired and reliable
	5	Government and PNP facilities have been repaired, modernized and strengthened for future disasters
Health & Social Services	<b>HSS: Sustainable and resilient health education and social service systems</b>	
	1	Households have safe drinking water and no hazardous and toxic materials
	2	Healthcare providers have resumed capacity to meet chronic or long-term health needs, as well as primary and emergency care
	3	Ensure survivors are provided necessary behavioral health and disaster case management services.
	4	Social Assistance programs that support vulnerable populations, e.g., have resumed delivery of financial and other materiel support and services to vulnerable segments of the community's population
	5	Schools are fully operational & providing full academic programs and can provide a safe, sanitary, and supportive environment
Natural & Cultural Resources	<b>NCR: Restored, preserved, risk-resistant and resilient resources</b>	
	1	Natural resources in the affected community, to include socially marginalized, have been restored to protect people and ecosystems
	2	Resources associated with entertainment, education, recreation, and tourism have been repaired, and public accessibility restored
	3	Access to raw material and other commodities that sustain the local economy has been restored
	4	Sites and artifacts associated with the community's heritage and identity have been stabilized/protected, and public accessibility to these sites has been restored
	5	



FEMA

## COMMUNITY PLANNING & CAPACITY BUILDING: Resilient recovery of SLTT communities

**Outcome Indicator (C3):** Community engagement and communication strategy is in place for long-term recovery plan or strategy

- Deployed Federal Disaster Recovery Officer
- Identified other sources of federal support and assistance
- Integrated into Buchanan County Long Term Recovery Group

**Outcome Indicator (C5):** Inclusive communications strategy developed for long-term recovery planning or strategy

- Formed joint, cross-functional mapping taskforce
- Provide options to approximate new flood risk
- Develop joint-strategic communications plan



# FEMA

Helping people before, during, and after disasters.



*Scan to subscribe to this briefing.*