

FEMA National Watch Center

Daily Operations Briefing

Wednesday, May 11, 2022

8:30 a.m. ET



FEMA

National Current Ops / Monitoring

New Significant Incidents / Ongoing Ops

- Wildfires – New Mexico
- Southwest Border Coordination Support – Washington, DC
- COVID-19

Hazard Monitoring

- Critical fire weather– Central Great Basin to Southwest and Central Plains
- Severe thunderstorms – Southern Plains; Central/Northern Plains to Middle/Upper Mississippi Valleys
- Heavy rain and flash flooding – Middle/Upper Mississippi Valleys

Disaster Declaration Activity

- No new declaration activity

Event Monitoring

- No significant events



FEMA

Hermit's Peak Fire – New Mexico

Fire Name (Co., ST)	FMAG #	Acres Burned	Percent Contained	Evacuations	Structures (Homes / Other)			Fatalities / Injuries
					Threatened	Damaged	Destroyed	
Hermit's Peak (San Miguel, NM)	5438-FM-NM	203,920 (+27,647)	43%	M: 25,939	H: 20,506 (-1,783)	H: 10	H: 229 (-9)	0 / 30 (+5)
				V: 0	O: 0	O: 5	O: 155	

Current Situation: Taos County and Colfax County have issued Ready and Set evacuation notifications for some areas. Some evacuation zones on the east side from Ledoux to Las Vegas have begun repopulation, but the areas are still in Set status; residents need to remain vigilant to rapidly changing conditions. (Region VI RRCC Incident Report as of 5:00 p.m. ET, May 10). Anticipated containment date is July 31.

Lifeline Impacts: (Region VI RRCC Incident Report as of 5:00 p.m. ET, May 10)

Safety and Security:

- Los Alamos Public Schools remain closed

Food, Water, and Shelter:

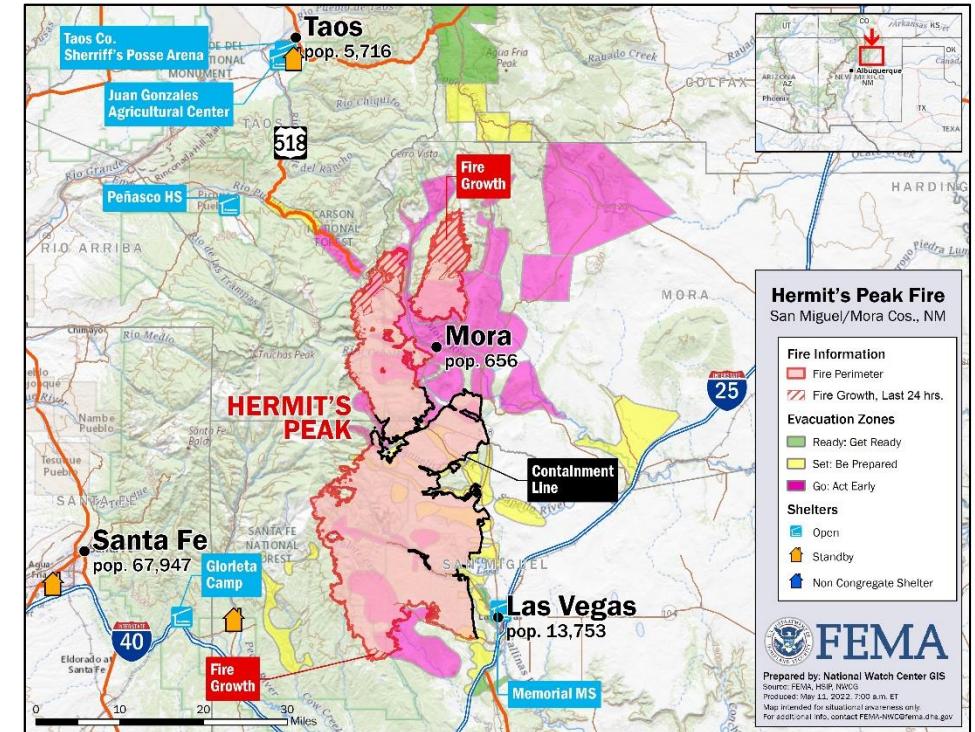
- 6 congregate shelters open with 794 (+17) occupants; 8 shelters on standby (ARC Midnight Shelter Count as of 6:54 a.m. ET)
- Point of Distribution (POD) established at Glorieta Camp for distribution of emergency supplies (clean-up and comfort kits and cases of water)

Health and Medical:

- Precautionary evacuations of 197 patients from Behavioral Health Institute and the Alta Vista Hospital (ER remains open) in Las Vegas, NM; re-entry plan for Institute established

Energy:

- 29 generators with supporting fuel tanks are on-site at the FSA Albuquerque Expo Center and have been transferred to USACE; USACE coordinating with state on assessments and installs
- ESF-3 USACE Power Planning Response Team (PRT) and 249th Engineering Battalion are on-site



FEMA

National Watch Center

Cerro Pelado Fire – New Mexico

Fire Name (Co., ST)	FMAG #	Acres Burned	Percent Contained	Evacuations	Structures (Homes / Other)			Fatalities / Injuries
					Threatened	Damaged	Destroyed	
Cerro Pelado (Sandoval, NM)	No FMAG Requested	42,491 (+1,533)	11%	M: 732 (+2)	H: 34	H: 0	H: 4	0 / 1
				V: 0	O: 0	O: 0	O: 6	

Current Situation: The fire is 3 miles SW of Los Alamos National Laboratory (LANL). If the fire breaches Alamo Canyon, both LANL and the Los Alamos County townsite will move into a Go evacuation stage. LANL and Los Alamos County consider the fire in the Alamo Canyon a controlled fire and the wind is pushing the fire away from the lab. LANL is current in Set status.

The southern edge of the fire is pushing into tribal lands and the fire is progressing through the Las Conchas burn scar. Air crews will begin 24-hour operations with drone support occurring at night. (Region VI RRCC Incident Report as of 5:00 p.m. ET, May 10) Estimated containment date is May 21.

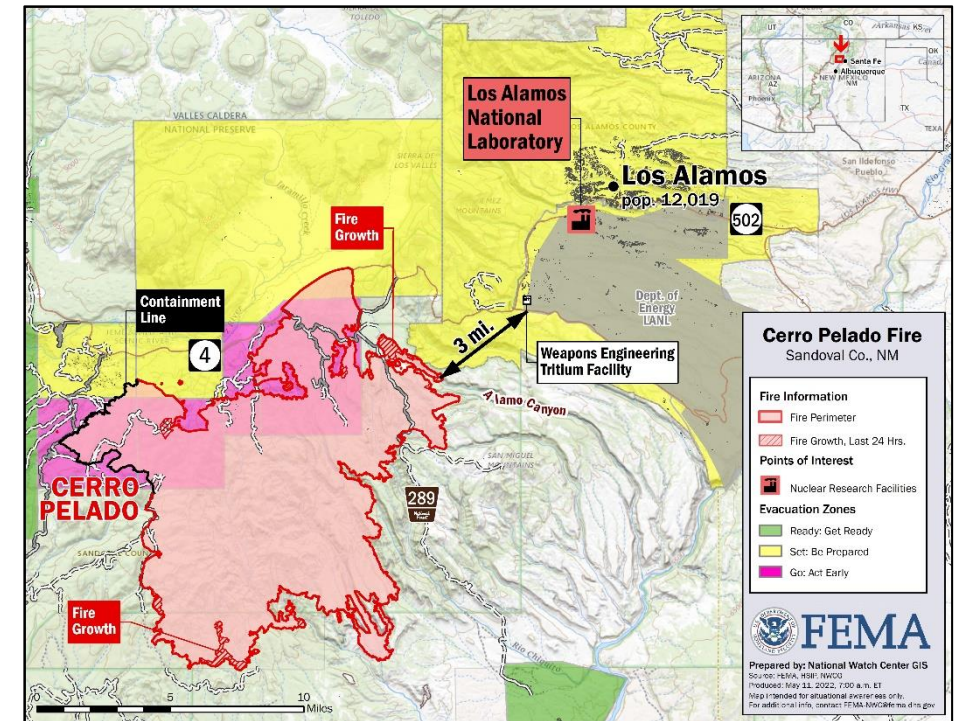
Lifeline Impacts (Region VI RRCC Incident Report as of 5:00 p.m. ET, May 10)

Safety and Security:

- Fire restrictions at Stage 3: DOE and county-maintained trails are closed to recreational use; campfires and charcoal grilling are prohibited; no use of firearms, firing ranges, or ammunition; no use of unpaved recreational areas.
- Los Alamos Fire Department is prepared to increase staff to add roving fire patrols of the lab's perimeter should the fire threaten lab property
- The lab has firefighting equipment on hand - US Forrest Service helicopter on site, a 20,000-gallon water dip tank, lab water tankers, and heavy equipment (bull dozers, backhoes, etc.) to assist with establishing fire lines

Hazardous Materials:

- The possibility of any nuclear or radiological incident due to the fire remains low



FEMA

National Watch Center

Safety and Security Food, Water, Sheltering Health and Medical Energy Power & Fuel Communications Transportation Hazardous Materials

- NM / LANL EOCs at Full Activation
- NM National Guard conducting water drops
- LANL at “Set” Evacuation Phase; Laboratory will remain in maximum telework status until the fire is under control
- NM coordinating with CA on EMAC requests:
 - One Type 3 strike team in Las Vegas, NM
 - One Type 3 strike team/one Type 2 initial attack strike team in NM
 - One Recovery Specialist with watershed protection expertise requested

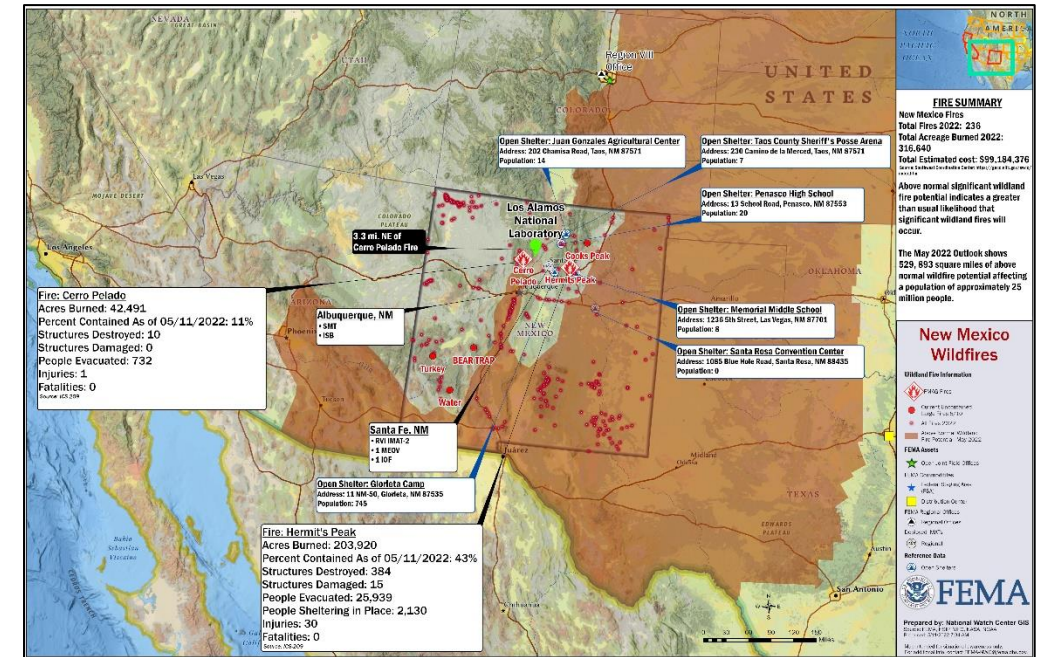
FEMA / Federal Response: (Region VI RRCC Incident Report as of 5:00 p.m. ET, May 10)

FEMA Headquarters:

- NRCC at Level III (COVID-19); NWC continues to report
- Federal Staging Area (FSA)/Incident Support Base (ISB) is fully operational at the Albuquerque Expo Center with ISB/SMT teams, cache, commodities (water, meals, cots, blankets, shuttles), 29 generators, 1 BOM kit at GSB, 10 Disaster Recovery Center (DRC) kits, and IMAT equipment
- MERS: One Mobile Emergency Operations Vehicle (MEOV) , and five Mobile Communications Office Vehicles (MCOV) are on site
- ESF-3 USACE Planning Response Team (PRT) and 249th Engineering Battalion are on-site at FSA/ISB; IMAT and USACE coordinating generator installation requirements with NM
- Preliminary Damage Assessments (PDAs) teams are on site
- Major Disaster Declaration FEMA-4652-DR-NM was approved on May 4 for wildfires

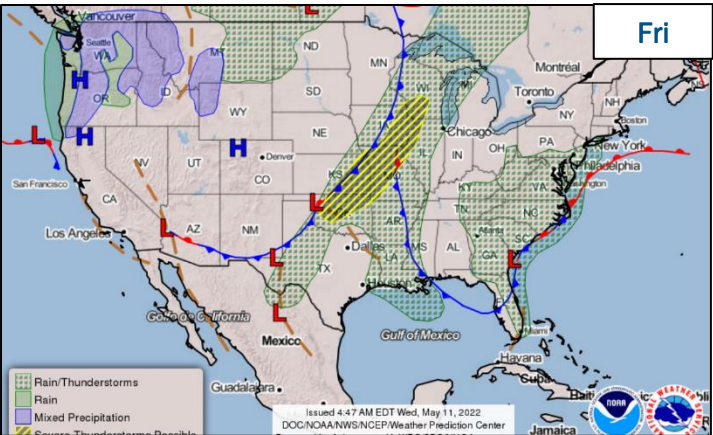
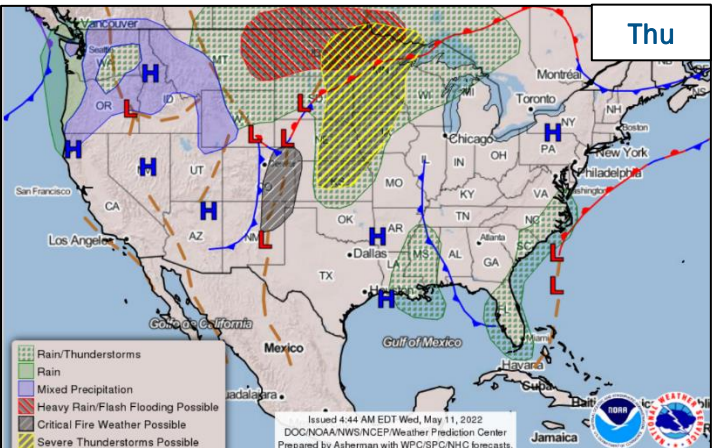
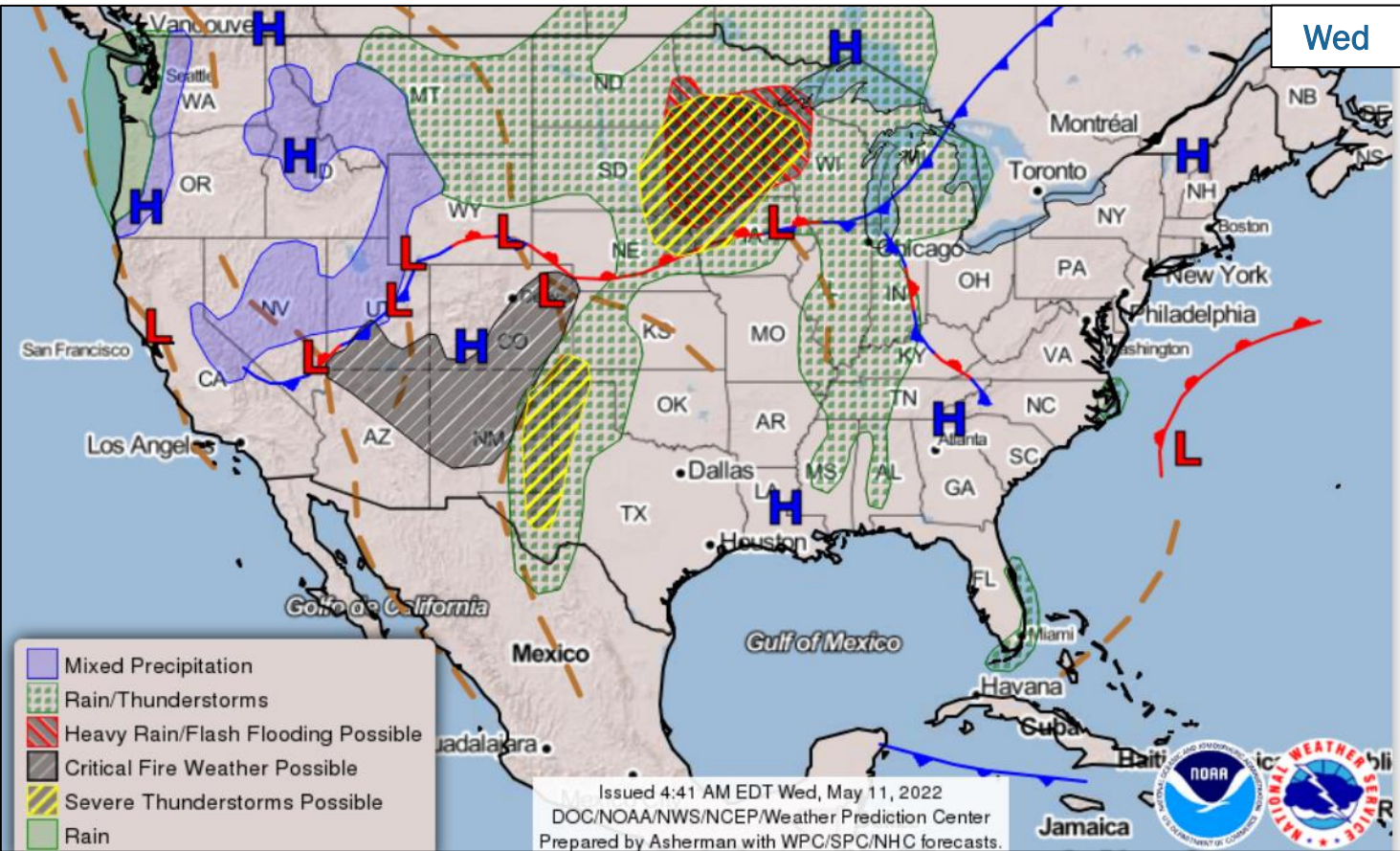
Region VI:

- RRCC at Level III (day shift only) with ESF-2/3/4/6/7/11/12/15; RRCC to field transition coordination is estimated to take place this week
- Region VI IMAT-2 deployed to NM EOC
- Initial Operating Facility (IOF) established in Santa Fe
- Logistics and GSA are working to identify a JFO facility; **5 JFO kits arrived May 8**
- **197** personnel deployed to FEMA-4652-DR-NM, including Disaster Survivor Assistance (DSA) personnel



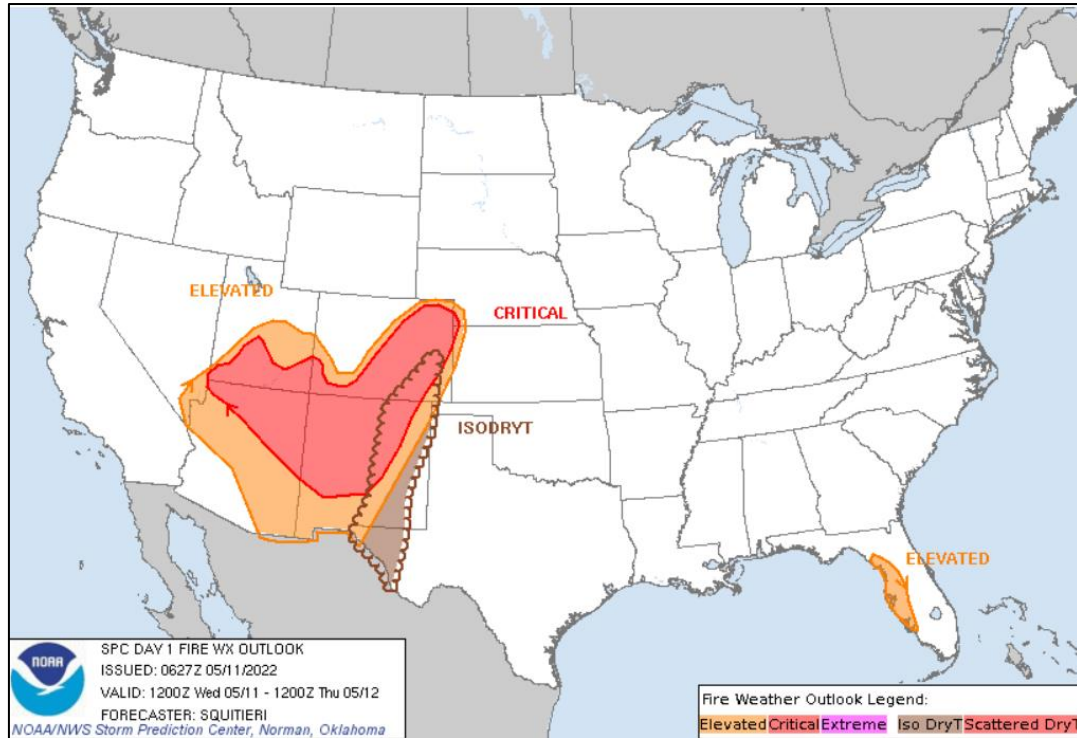
FEMA

National Weather Forecast

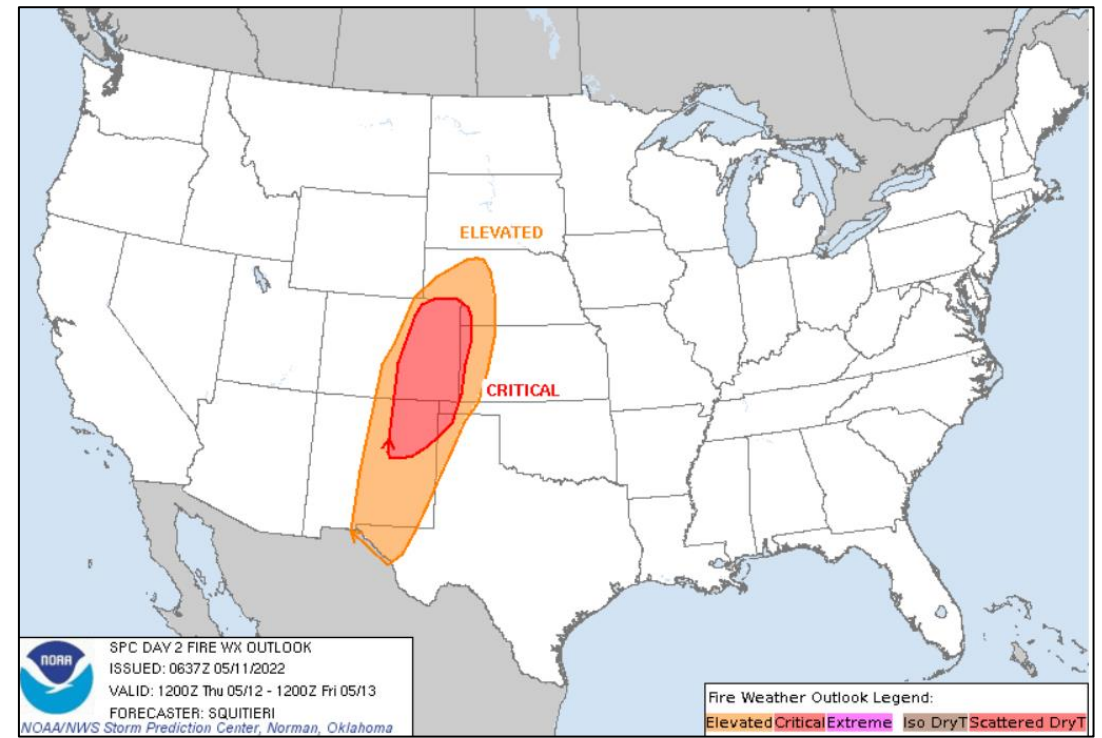


FEMA

Fire Weather Outlook



Today



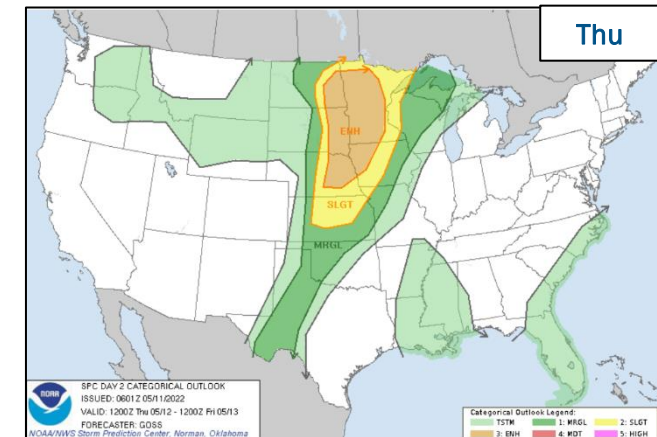
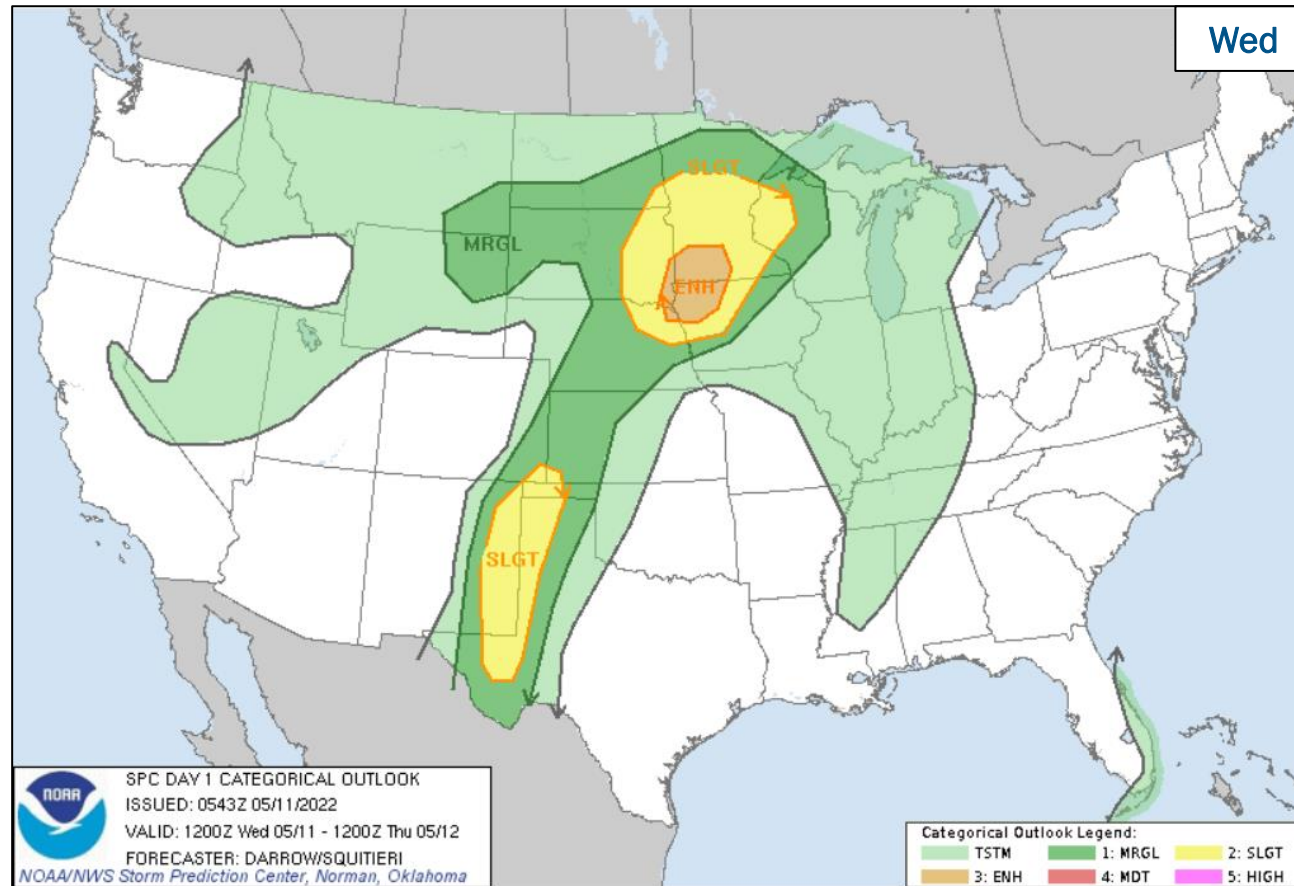
Tomorrow



FEMA

National Watch Center

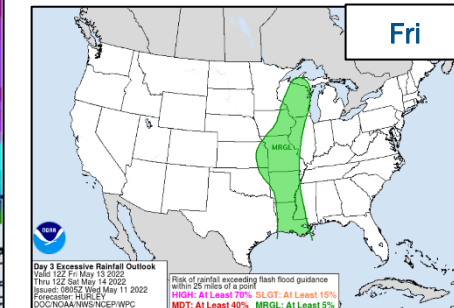
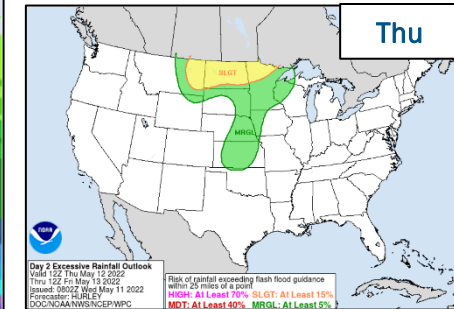
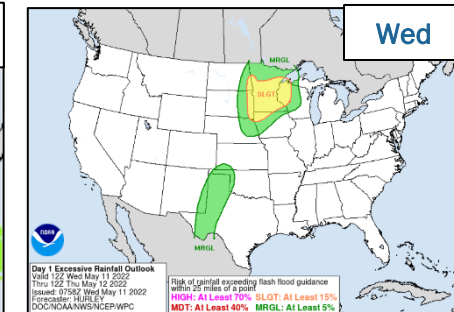
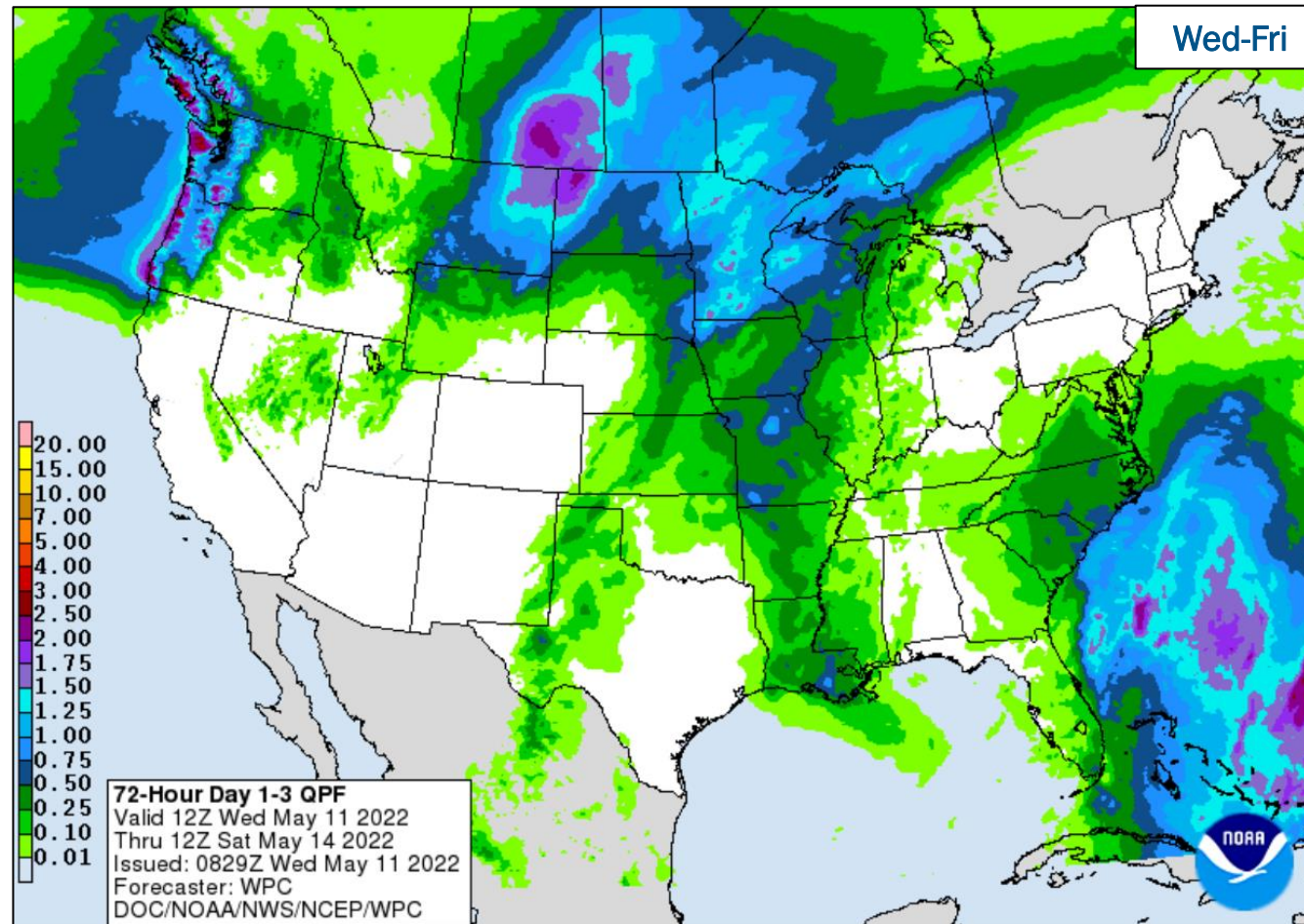
Severe Weather Outlook



FEMA

National Watch Center

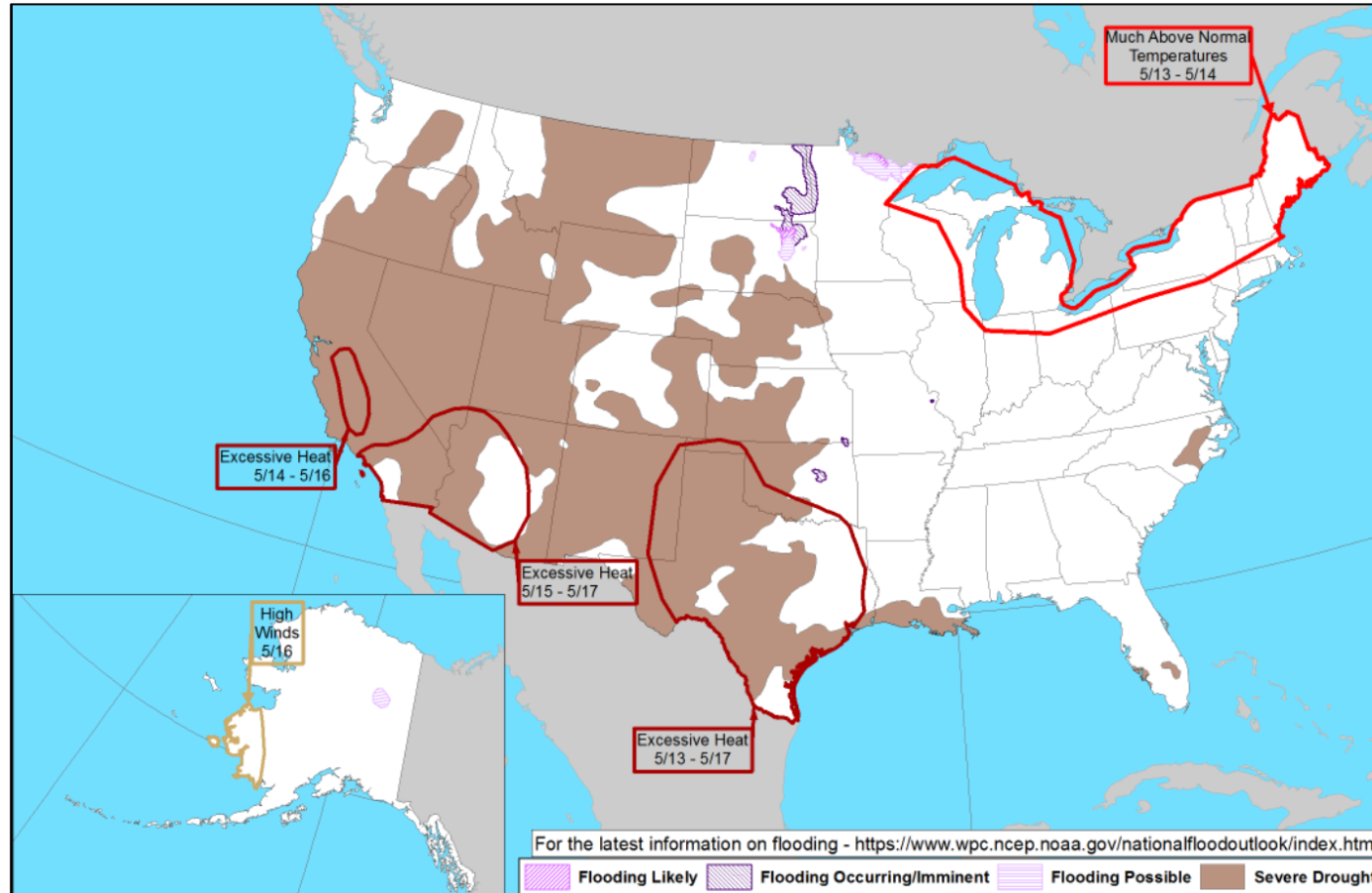
Precipitation & Excessive Rainfall



FEMA

National Watch Center

Hazards Outlook – May 13-17



FEMA

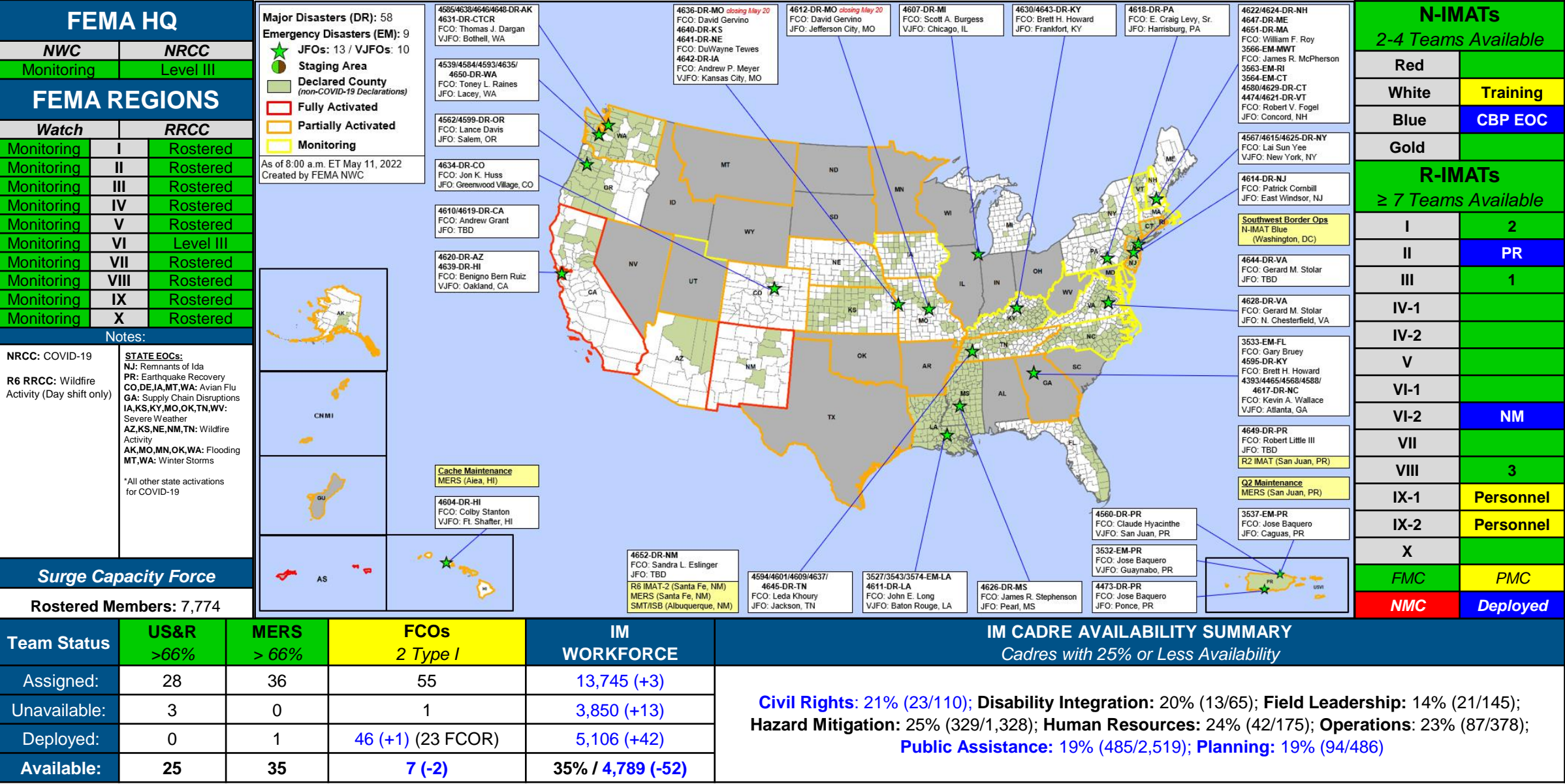
Declaration Requests in Process – 4

State / Tribe / Territory – Incident Description	Type	IA	PA	HM	Requested
RI – Severe Winter Storm and Snowstorm	DR		X	X	Apr 12
MS – Severe Storm, Straight-line Winds, and Tornadoes	DR	X		X	Apr 28
MS – Severe Storm, Straight-line Winds, and Tornadoes	DR	X		X	Apr 29
KS – Winter Storms and Straight-line Winds	DR		X	X	May 3



FEMA

FEMA Common Operating Picture





FEMA

Helping people before, during, and after disasters.



Scan to subscribe to this briefing.