

FEMA National Watch Center

Daily Operations Briefing

Tuesday, May 10, 2022

8:30 a.m. ET



FEMA

National Current Ops / Monitoring

New Significant Incidents / Ongoing Ops

- Wildfires – New Mexico
- Southwest Border Coordination Support – Washington, DC
- COVID-19

Hazard Monitoring

- Critical Fire Weather – Southwest to the Southern Rockies
- Severe storms possible – Southern Plains and Upper Mississippi Valley

Disaster Declaration Activity

- No new declaration activity

Event Monitoring

- No significant events



FEMA

Hermit's Peak Fire – New Mexico

Fire Name (Co., ST)	FMAG #	Acres Burned	Percent Contained	Evacuations	Structures (Homes / Other)			Fatalities / Injuries
					Threatened	Damaged	Destroyed	
Hermit's Peak (San Miguel, NM)	5438-FM-NM	176,273 (+21,098)	43%	M: 25,939	H: 22,289	H: 10	H: 238 (+26)	0 / 25 (+5)
				V: 0	O: 0	O: 5	O: 155 (+11)	

Current Situation: Protection measures are being implemented to secure the Gallinas corridor area; interior fuel pockets in areas west of Las Vegas, NM continue to burn; direct firefighting continues in Montezuma and Mineral Hills areas. Anticipated containment date is July 31.

Lifeline Impacts:

Safety and Security:

- Initial damage assessments from imagery indicate 293 structures destroyed; 157 single-family homes, 109 manufactured homes, and 30 non-traditional homes are damaged

Food, Water, and Shelter:

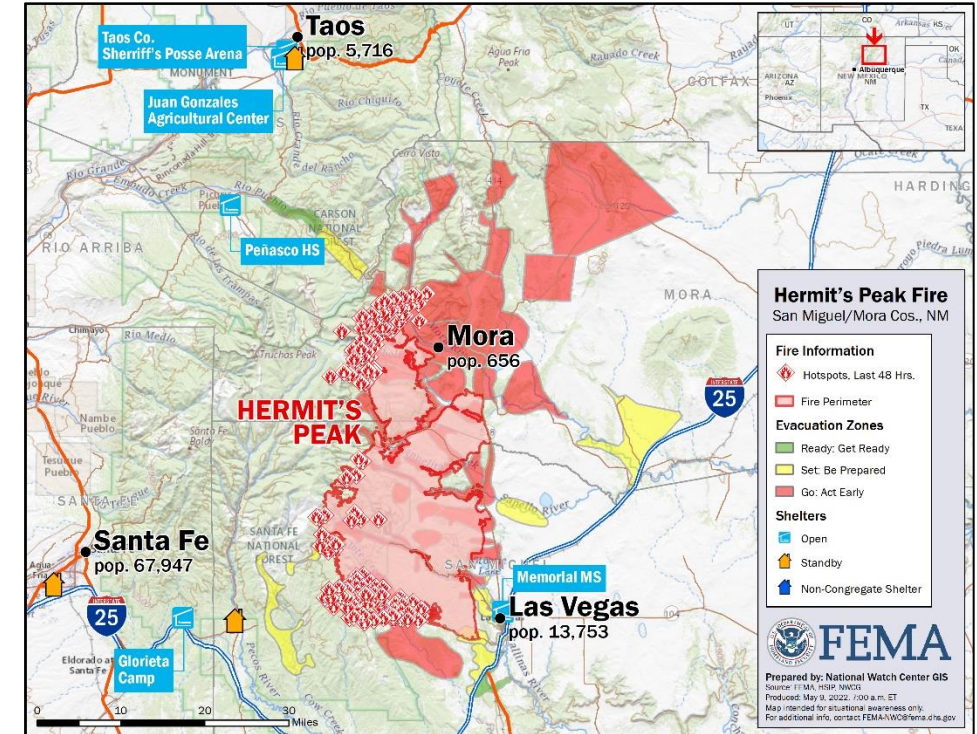
- 6 (+1) congregate shelters open with 777 (+27) occupants; 8 shelters on standby (*ARC Midnight Shelter Count as of 6:54 a.m. ET*)
- Point of Distribution (POD) established at Glorieta Camp for distribution of emergency supplies (clean-up and comfort kits and cases of water)

Health and Medical:

- Precautionary evacuations of 197 patients from Behavioral Health Institute and the Alta Vista Hospital (ER remains open) in Las Vegas, NM; re-entry plan for Institute established

Transportation:

- 12 roads remain closed in the Las Vegas area



FEMA

National Watch Center

Cerro Pelado Fire – New Mexico

Fire Name (Co., ST)	FMAG #	Acres Burned	Percent Contained	Evacuations	Structures (Homes / Other)			Fatalities / Injuries
					Threatened	Damaged	Destroyed	
Cerro Pelado (Sandoval, NM)	No FMAG Requested	40,958 (+3,533)	11%	M: 730 (+96)	H: 34	H: 0	H: 4	0 / 1
				V: 0	O: 0	O: 0	O: 6	

Current Situation: The fire has jumped Forest Service Road 289. The laboratory is reporting the fire is still approx. **3 miles** SW of Los Alamos National Laboratory (LANL). **LANL Air Emissions Program conducted real-time air monitoring.** A controlled burn is planned along the Alamo trail, which will increase the defensive space between LANL and the fire. LANL Facilities on the southwestern border have been placed into safe configuration. Estimated containment date is May 21.

Lifeline Impacts:

Safety and Security:

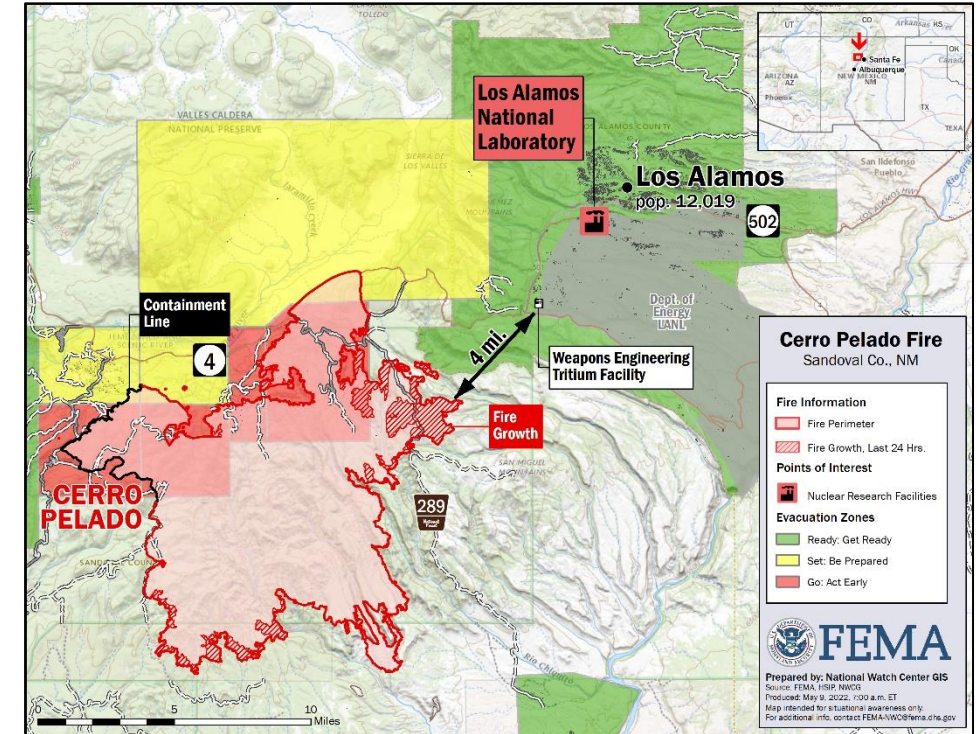
- County measures and resources are in place to protect and evacuate the facility
- Decision trigger points are in place:
 - First is an initial 5-mile management action point that will trigger the activation of the LANL EOC, and extra fire mitigation efforts along portions of the perimeter.
 - Next will trigger evacuations for portions of the surrounding county of Los Alamos

Hazardous Materials:

- The possibility of any nuclear or radiological incident due to the fire remains low

Transportation:

- 12 roads remain closed in the Los Alamos area



FEMA

New Mexico Wildfires – Response



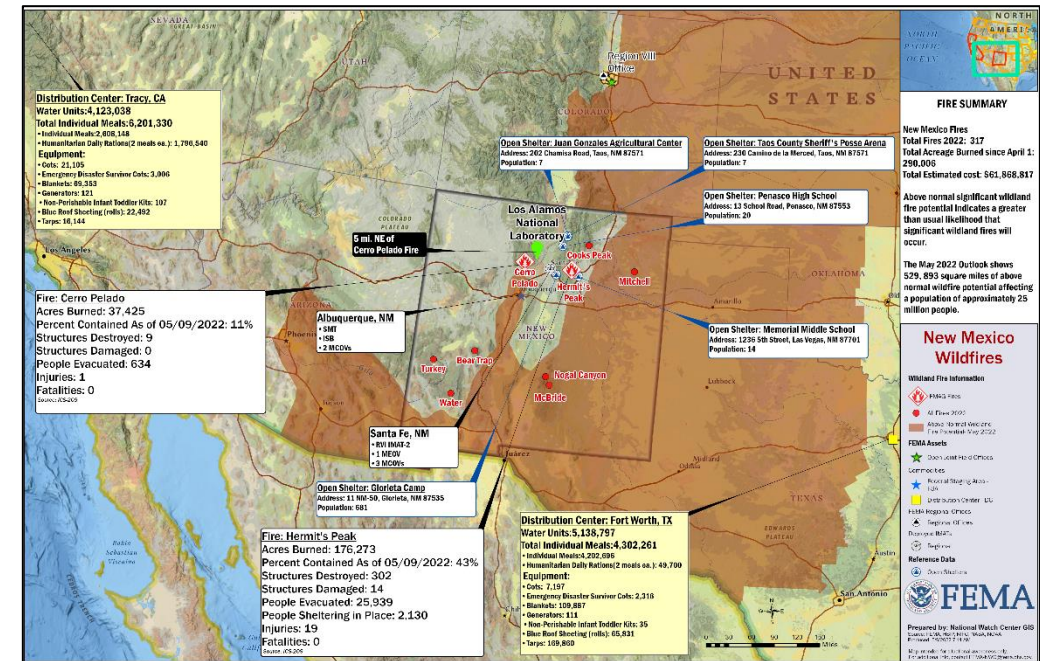
State / Local Response:

- NM / LANL EOCs at Full Activation
- NM National Guard conducting water drops
- City of Las Vegas PSAP may be evacuated due to heavy smoke
- LANL entered “Set” Evacuation Phase at 10:00 a.m. ET, May 9
 - Laboratory will remain in maximum telework status until the fire is under control
- LANL is entering Stage 3 fire restrictions (trails maintained by DOE and the county are closed); actions have been taken to bolster LANL property and hotshot crews conducted a backburn to prevent spread along the eastern side
- NM coordinating with CA on EMAC requests:
 - One Type 3 strike team in Las Vegas, NM
 - One Type 3 strike team/one Type 2 initial attack strike team in NM
 - One Recovery Specialist with watershed protection expertise requested
 - Additional fire crews have been deployed (six Hot Shot Crews)

FEMA / Federal Response:

FEMA Headquarters:

- NRCC at Level III (COVID-19); NWC continues to monitor and provide updates
- Incident Support Base (ISB) is fully operational at the Albuquerque Expo Center with ISB team, cache, commodities (water, meals, cots, blankets, shuttles), 29 generators, 1 BOM kit at GSB, 10 Disaster Recovery Center (DRC) kits, and IMAT equipment
- MERS: One Mobile Emergency Operations Vehicle (MEOV) , and five Mobile Communications Office Vehicles (MCOV) are on site
- ESF-3 USACE Temporary Power Management Cell on-site at ISB; IMAT and USACE coordinating generator installation requirements with NM
- Preliminary Damage Assessments (PDAs) teams are on site; will begin today
- Major Disaster Declaration FEMA-4652-DR-NM was approved on May 4 for wildfires
- Five shuttle trucks deployed with two additional trucks arriving May 9
- All USACE Power PRT (11) and 249th EN BN Soldiers (6) on ground plus the additional support staff (8)



Region VI:

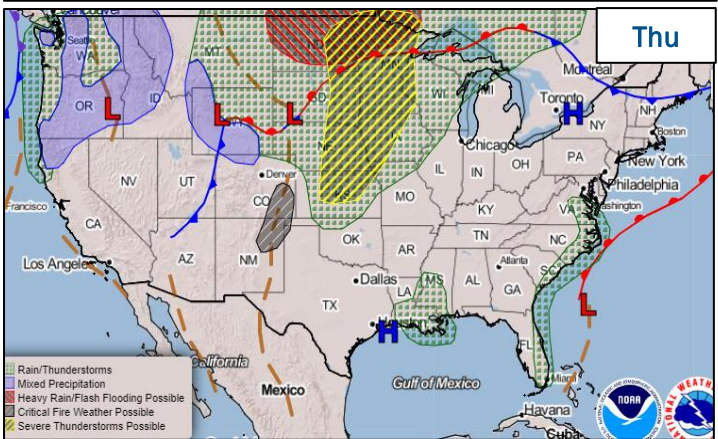
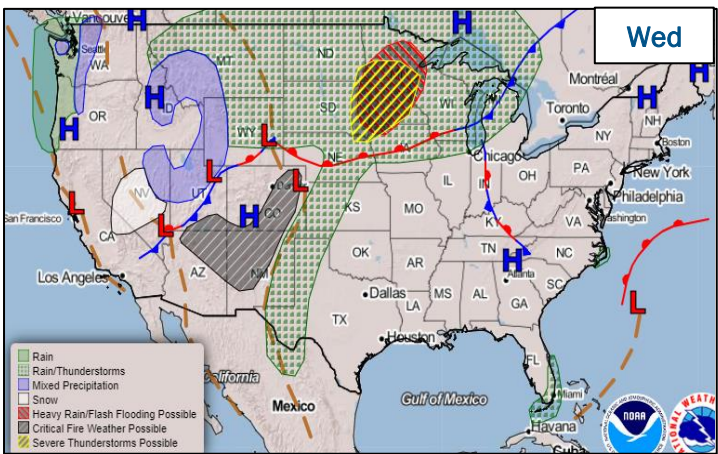
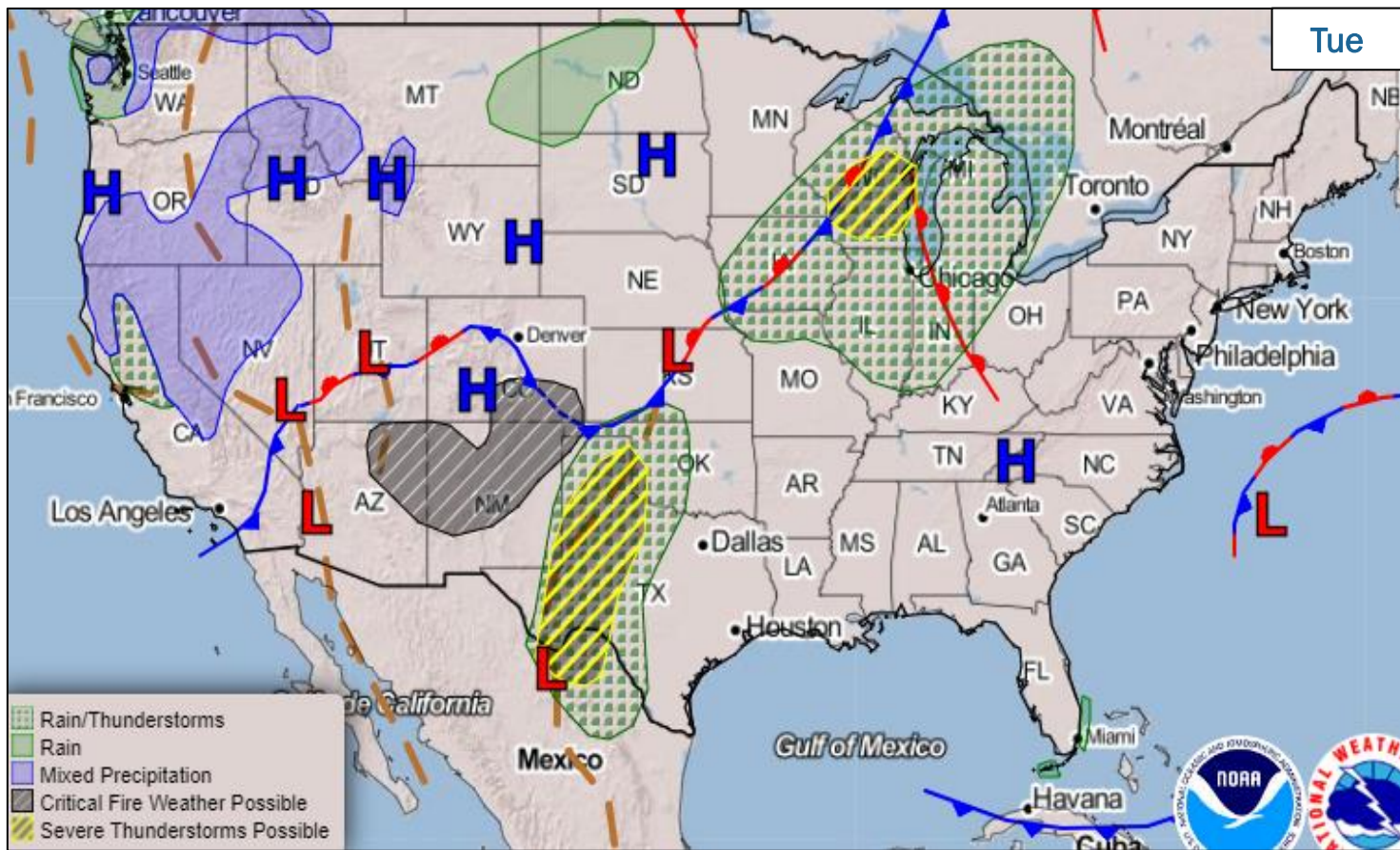
- RRCC at Level III (day shift only) with ESF-2/3/4/6/7/11/12/15; RRCC to field transition coordination, estimated to take place this week
- Region VI IMAT-2 deployed to NM EOC
- Command and Control vehicles for ISB team arrived May 7
- Initial Operating Facility (IOF) has been established
- Logistics and GSA are working to identify a JFO facility; JFO kits enroute
- 119 personnel deployed to FEMA-4652-DR-NM, including Disaster Survivor Assistance (DSA) personnel



FEMA

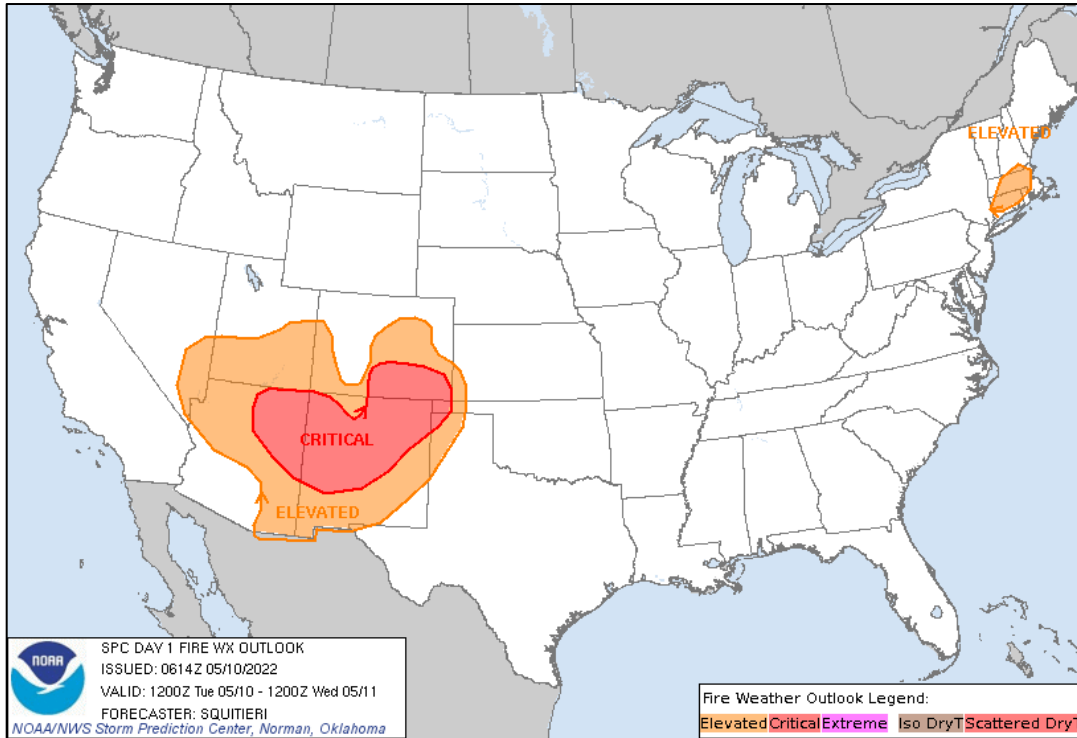
National Watch Center

National Weather Forecast

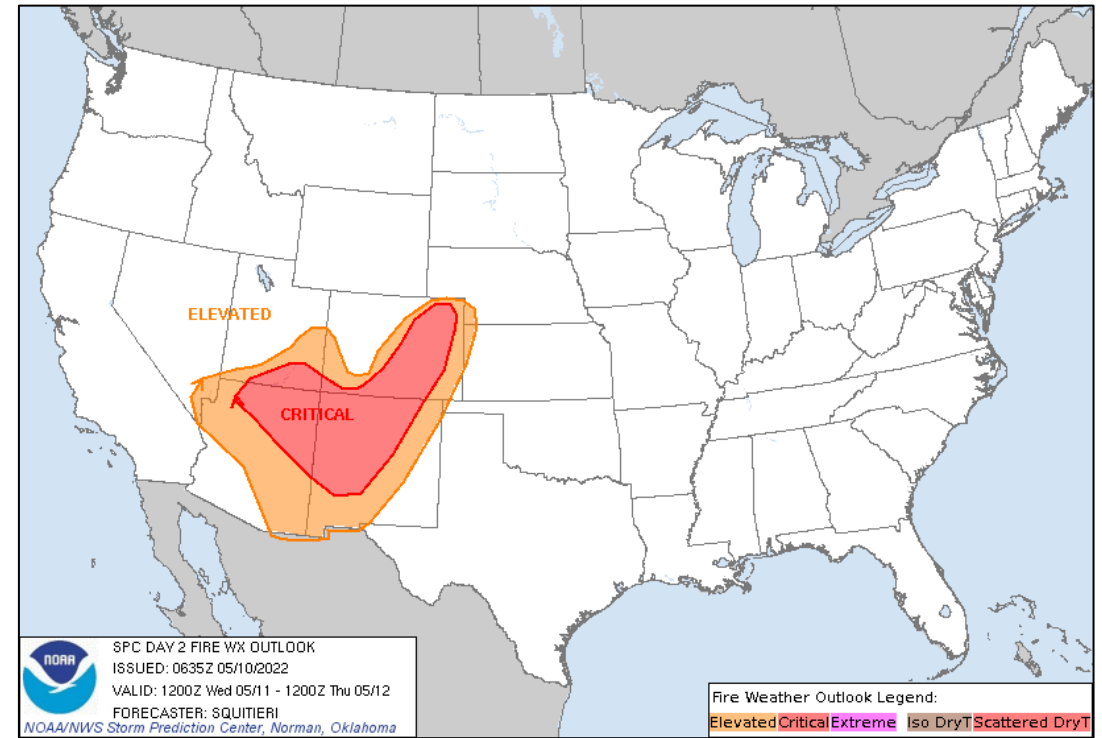


FEMA

Fire Weather Outlook



Today



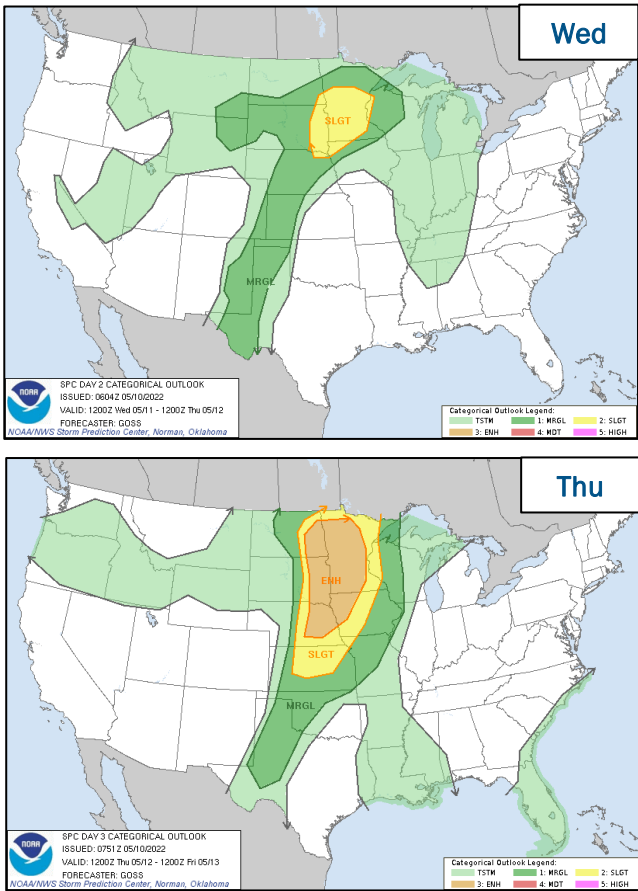
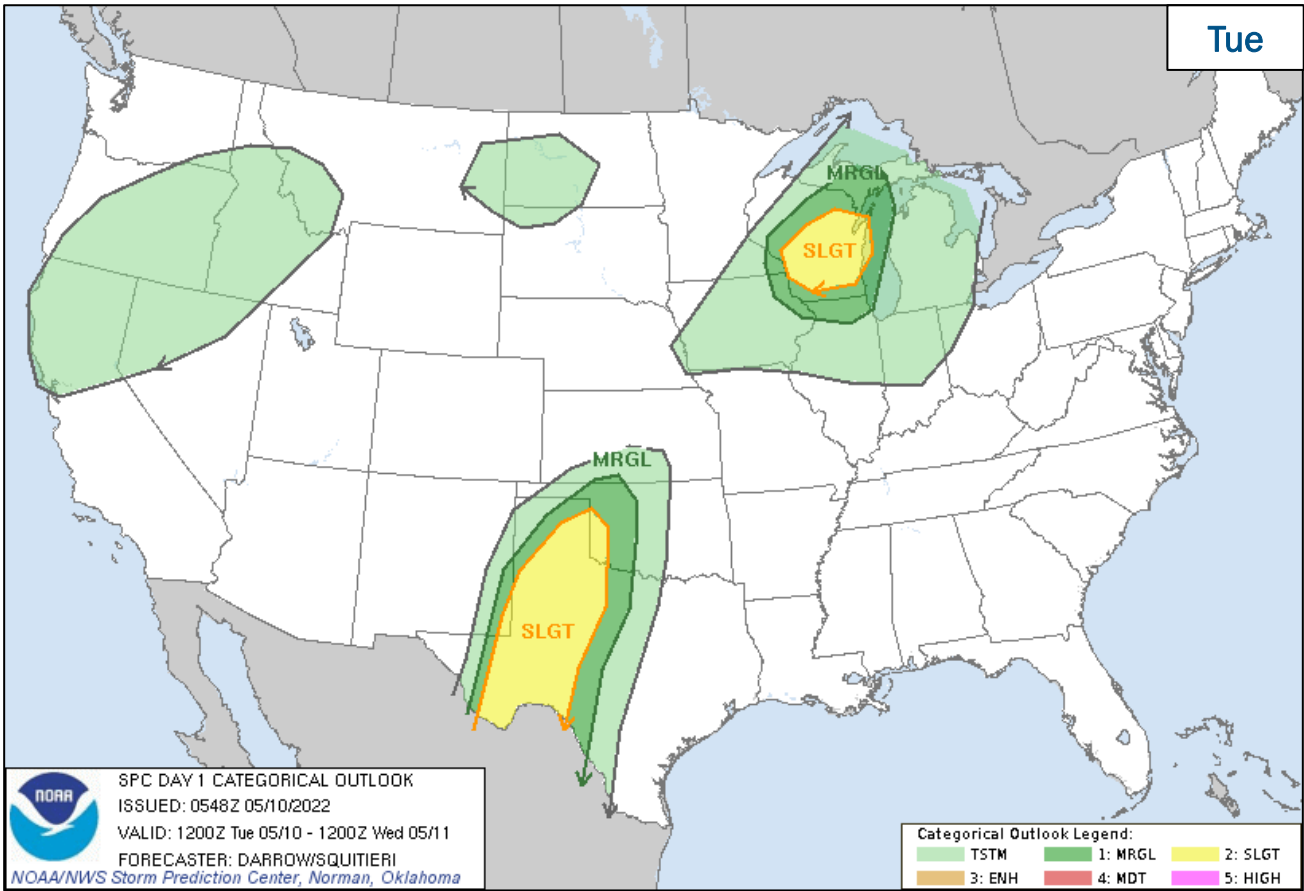
Tomorrow



FEMA

National Watch Center

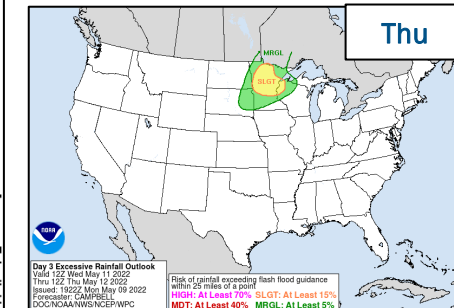
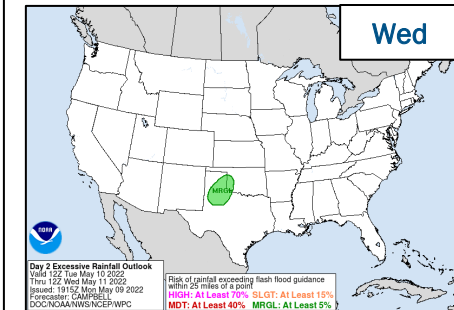
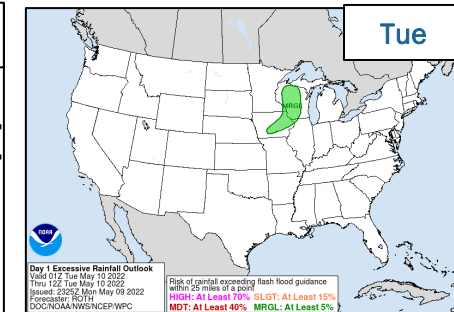
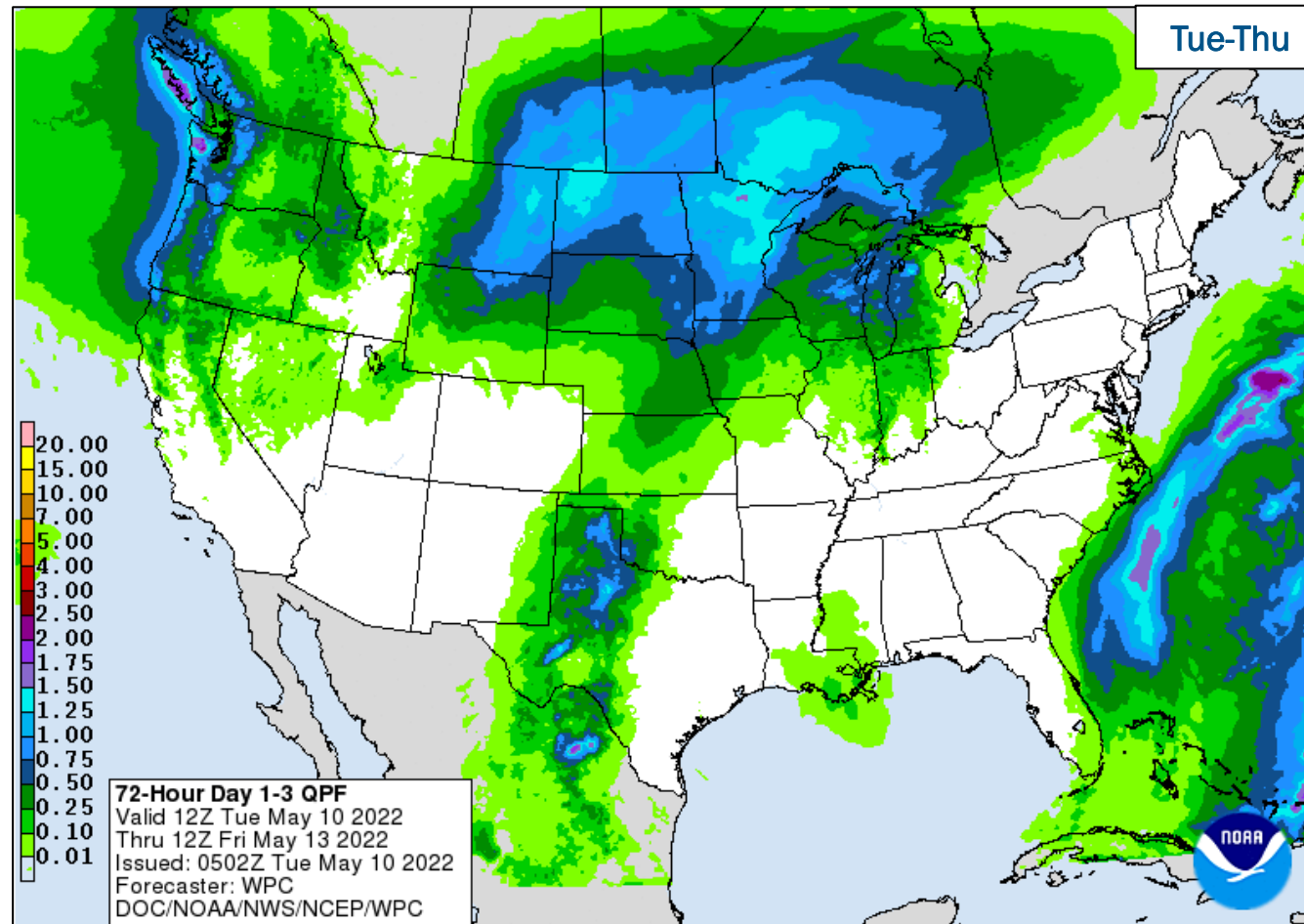
Severe Weather Outlook



FEMA

National Watch Center

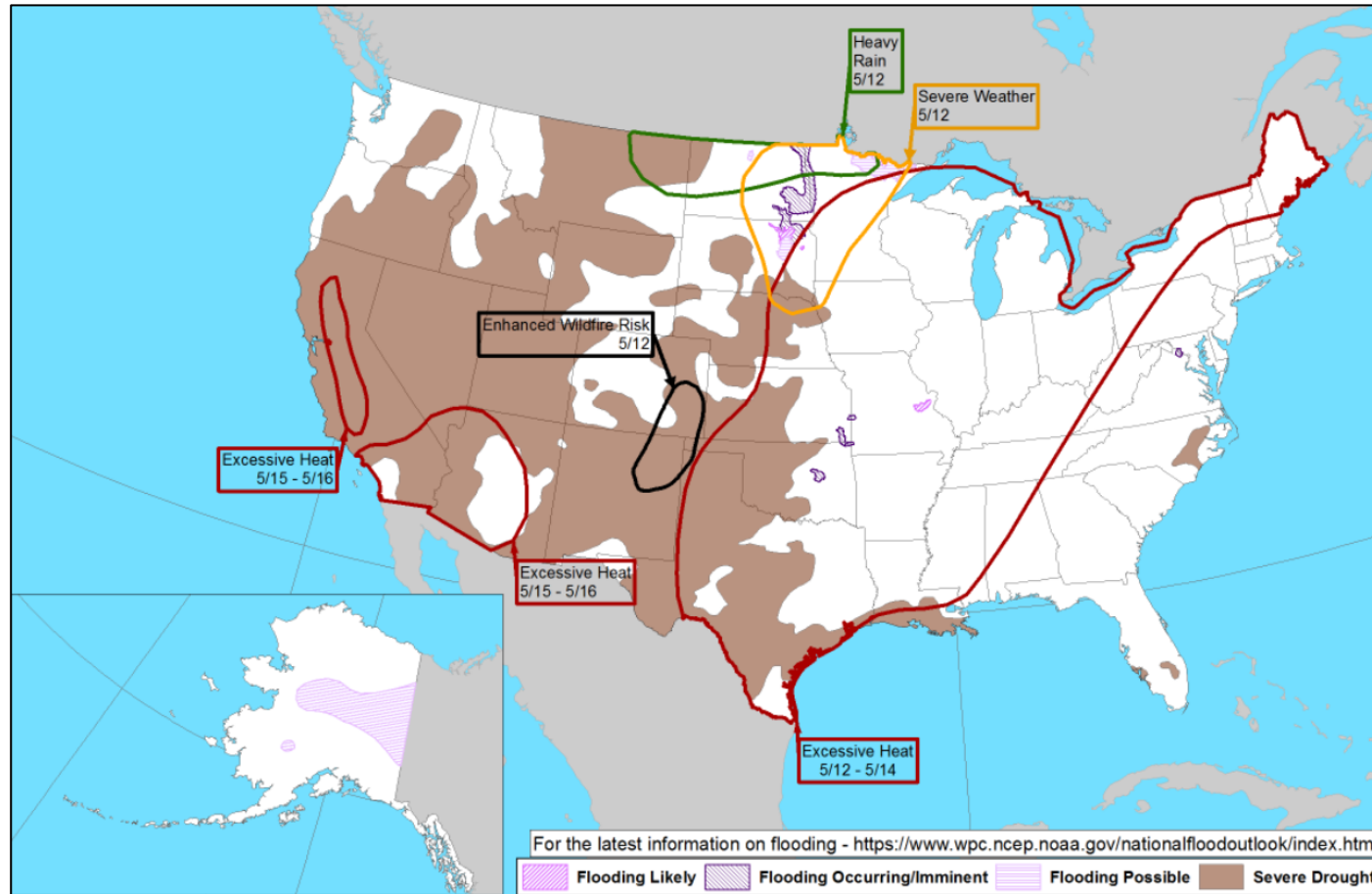
Precipitation & Excessive Rainfall



FEMA

National Watch Center

Hazards Outlook – May 12-16



FEMA

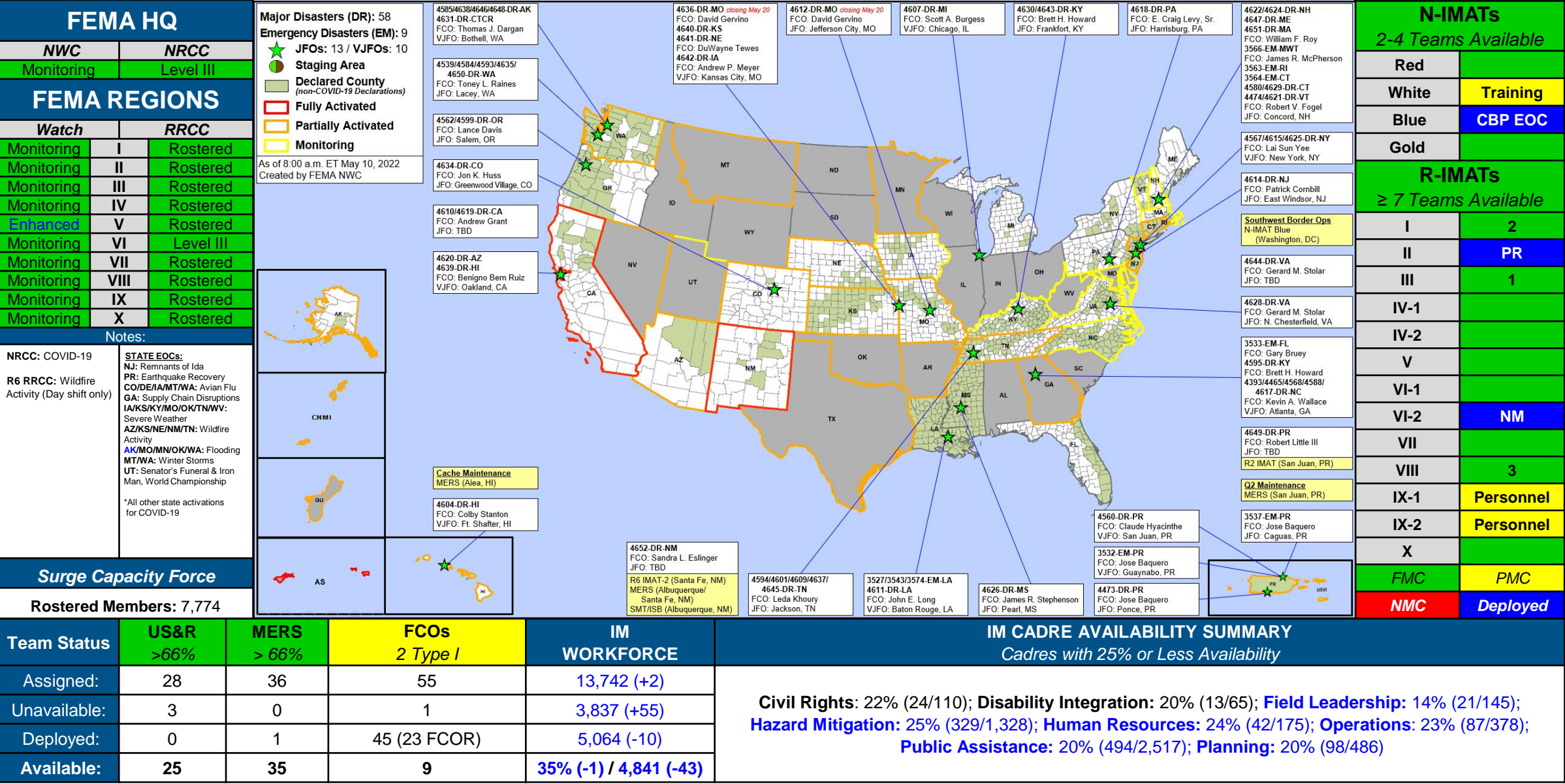
Declaration Requests in Process – 4

State / Tribe / Territory – Incident Description	Type	IA	PA	HM	Requested
RI – Severe Winter Storm and Snowstorm	DR		X	X	Apr 12
MS – Severe Storm, Straight-line Winds, and Tornadoes	DR	X		X	Apr 28
MS – Severe Storm, Straight-line Winds, and Tornadoes	DR	X		X	Apr 29
KS – Winter Storms and Straight-line Winds	DR		X	X	May 3



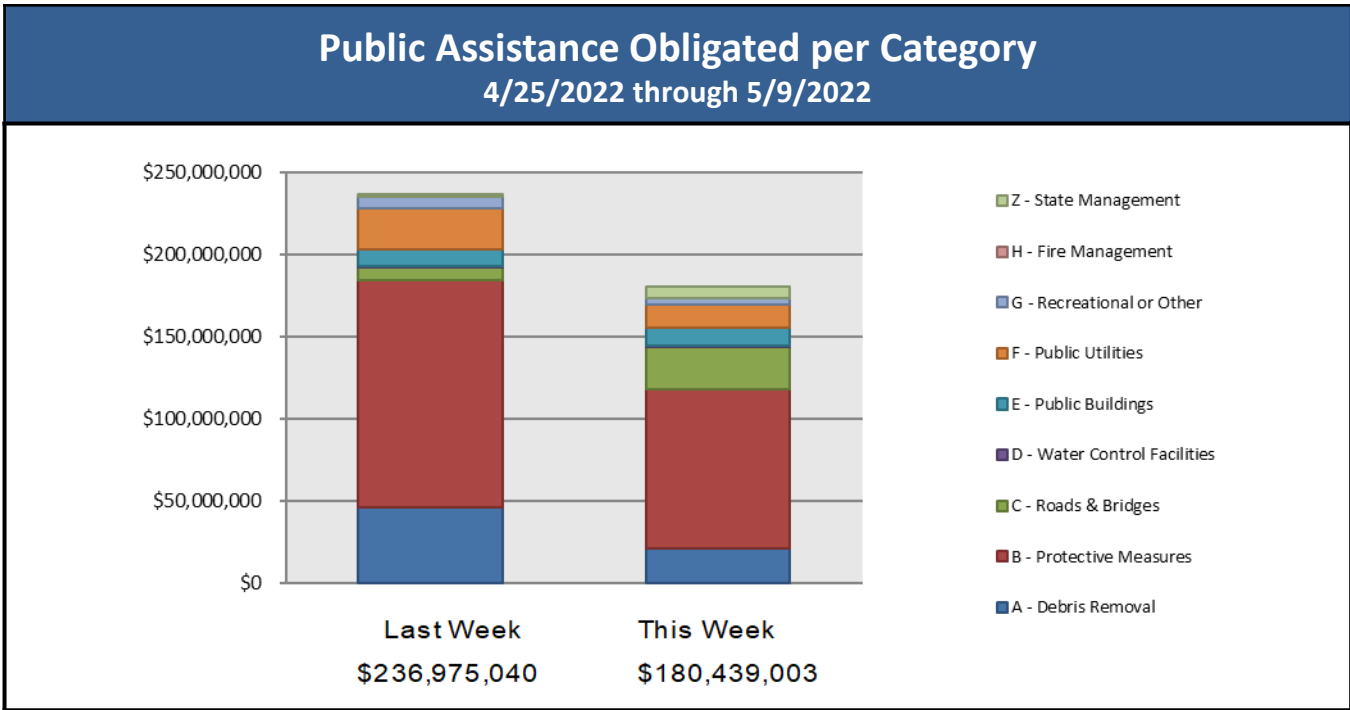
FEMA

FEMA Common Operating Picture



Public Assistance Grant Program

PA Project Worksheets Obligated in past week, as of 5/9/22 at 1500 EDT										
	Emergency Work		Permanent Work							
PA Category	A - Debris Removal	B - Protective Measures	C - Roads & Bridges	D - Water Control Facilities	E - Public Buildings	F - Public Utilities	G - Recreational or Other	H - Fire Management	Z - State Management	Total
Number Of PWs Obligated	149	421	249	33	116	88	78	0	77	1211
Federal Share Obligated	\$20,989,582.19	\$96,851,008.51	\$25,661,158.57	\$695,986	\$11,100,938.09	\$13,830,562.75	\$4,659,143.76	\$0	\$6,650,623.81	\$180,439,003.49



COVID-19 Obligated

as of 5/9/2022

- Total Public Assistance Obligated: \$44,447,635,889

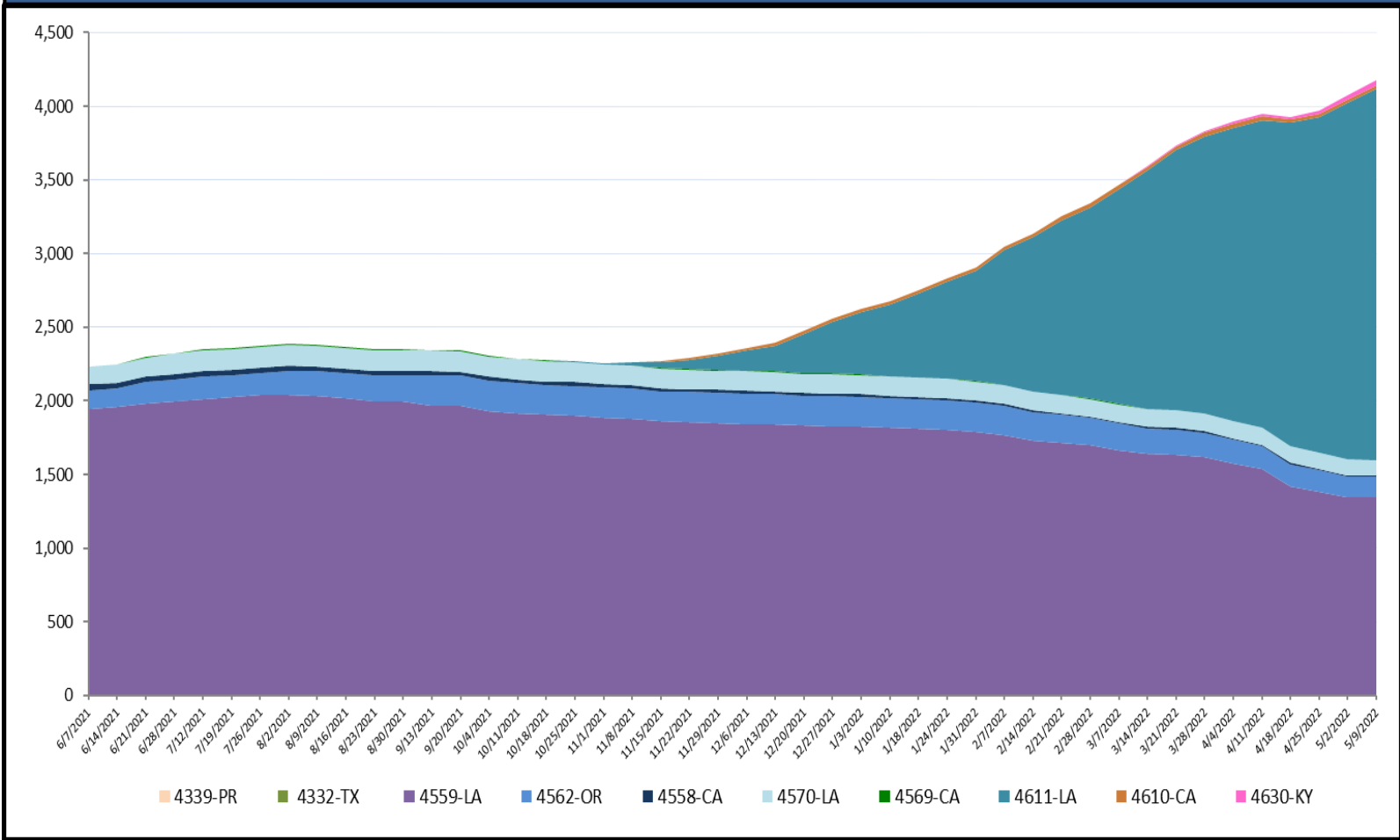
This Week's PA Highlights

- In 4521-VA
\$ 33 Million obligated for Category B –Protective Measures
- In 4564-FL
\$8 Million obligated for Category A–Debris Removal
- In 4339-PR
\$6 Million obligated for Category F - Public Utilities

Direct Housing

Total Households in FEMA Direct Housing per State

Past Year per Week, 6/7/2021 – 5/9/2022. There are currently **4,094** Households Occupying **4,114** Temporary Units.

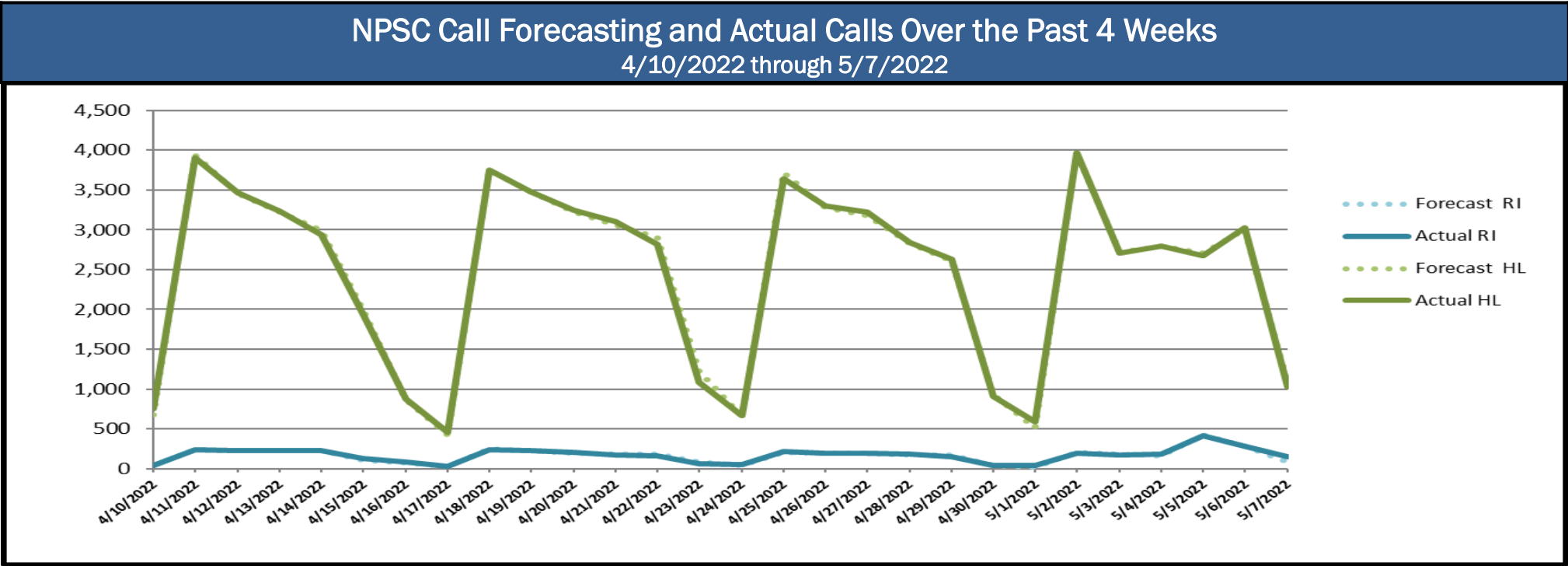


DR	IA Declaration Date	Program End Date	Current # of Households in Direct Housing (Weekly Change)
4630-KY	12/12/2021	6/13/2023	36 (6)
4611-LA	8/29/2021	2/28/2023	2522 (100)
4610-CA	8/24/2021	2/24/2023	22 (-1)
4570-LA	10/16/2020	4/16/2022	103 (-2)
4569-CA	10/16/2020	4/16/2022	0 (0)
4562-OR	9/15/2020	3/15/2022	140 (-4)
4559-LA	8/28/2020	2/28/2022	1341 (0)
4558-CA	8/22/2020	2/22/2022	8 (0)
4339-PR	9/20/2017	9/20/2019	1 (0)
4332-TX	8/25/2017	8/25/2019	2 (0)

States with Currently Occupied Units

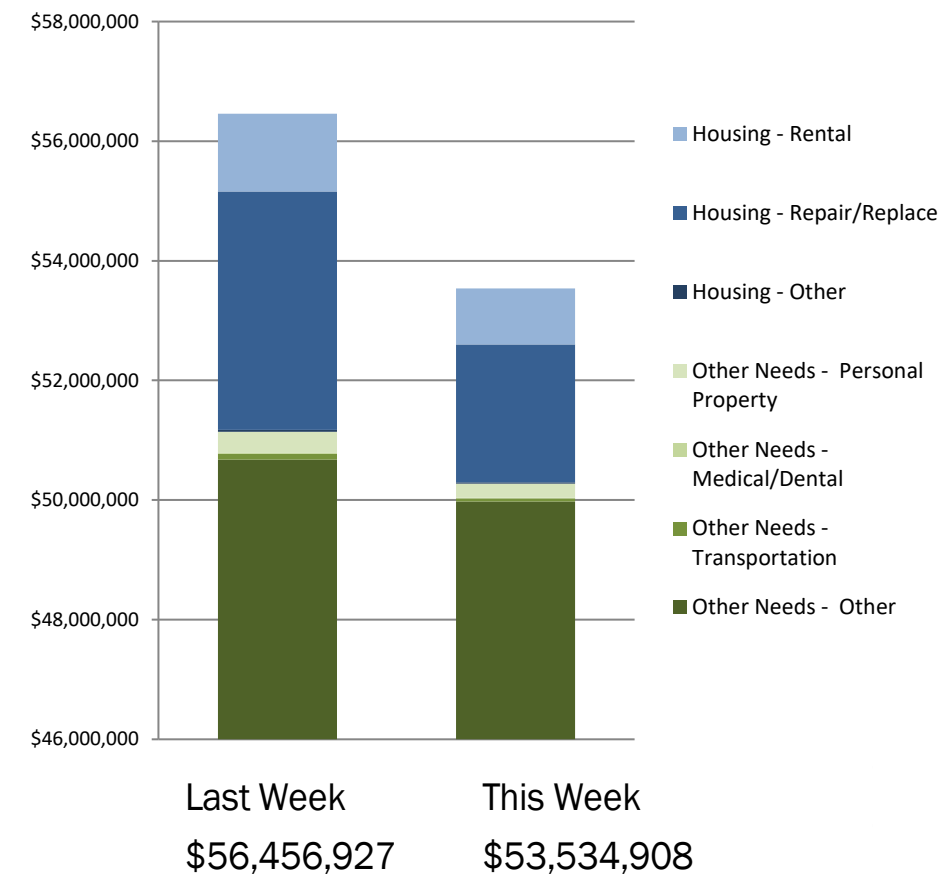
NPSC Call Activity

NPSC Call Activity in the Past Week		
5/01/2022 through 5/07/2022		
Call Type	Projected Calls	Actual Calls
Registration Intake:	1,350	1,435
Helpline:	16,779	16,791
Combined:	18,129	18,226



Individual Assistance Activity

IHP Approved per Category in the Past
2 Weeks – 4/25/2022 through 5/9/2022





FEMA

Helping people before, during, and after disasters.



Scan to subscribe to this briefing.