

FEMA National Watch Center

Daily Operations Briefing

Friday, May 6, 2022

8:30 a.m. ET



FEMA

National Current Ops / Monitoring

New Significant Incidents / Ongoing Ops

- Wildfires – New Mexico
- Southwest Border Coordination Support – Washington, DC
- COVID-19

Hazard Monitoring

- Severe Thunderstorms – Southeast to the Mid Atlantic
- Heavy Rain / Flash Flooding – Southern Plains to the Middle Mississippi Valley
- Elevated Fire Weather – Northern Plains, Southwest, and Southern Plains

Disaster Declaration Activity

- No declaration activity

Event Monitoring

- No significant events



FEMA

Hermit's Peak Fire – New Mexico

Fire Name (Co., ST)	FMAG #	Acres Burned	Percent Contained	Evacuations	Structures (Homes / Other)			Fatalities / Injuries
					Threatened	Damaged	Destroyed	
Hermit's Peak (San Miguel, NM)	5438-FM-NM	166,379 (+6,275)	20%	M: 25,939	H: 18,275 (+130)	H: 9	H: 170	0 / 13 (+2)
				V: 0	O: 0	O: 5 (-1)	O: 117	

Current Situation: The fire remains active; however, a two-day window of more favorable weather conditions will give firefighters an opportunity to take more protective measures. Primary focus of efforts include containment line construction around the perimeter of the fire and structural protection throughout the fire area. Officials continue to warn the public that this fire is anticipated to be a long-term event.

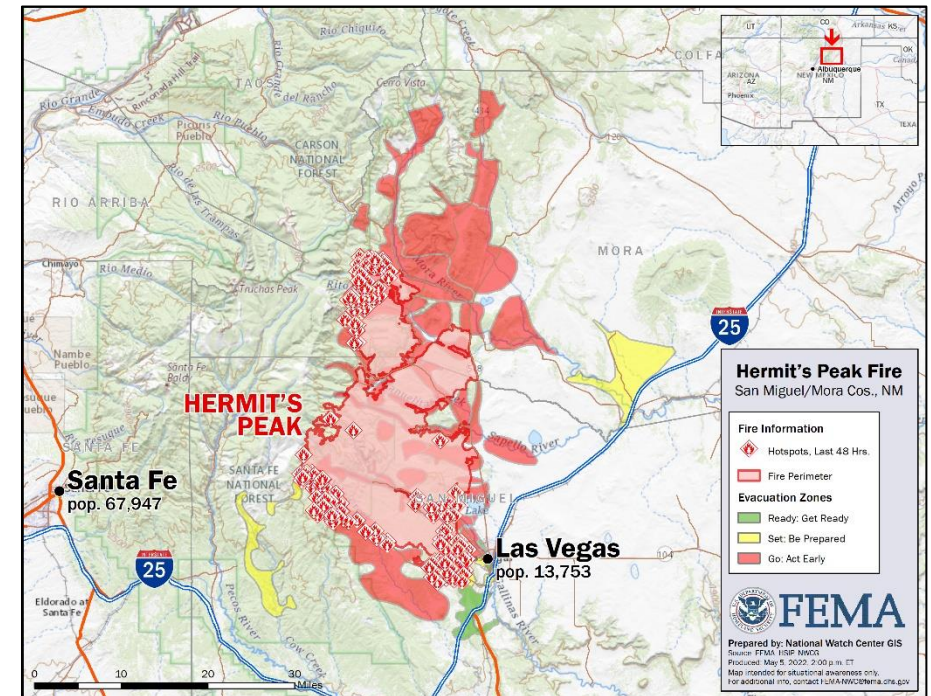
Impacts:

Safety and Security:

- Sheltering in place: 2,130

Transportation:

- Multiple roads closed
- Highways 94, 518, 442, and B028 are open for evacuation only



FEMA

Cerro Pelado Fire – New Mexico

Fire Name (Co., ST)	FMAG #	Acres Burned	Percent Contained	Evacuations	Structures (Homes / Other)			Fatalities / Injuries
					Threatened	Damaged	Destroyed	
Cerro Pelado (Sandoval, NM)	No FMAG Requested	29,368 (+2,441)	13%	M: 634	H: 34	H: 0	H: 3	0 / 1
				V: 0	O: 0	O: 0	O: 6	

Current Situation: Low to moderate fire behavior continues, with spread primarily occurring to the north and east. Officials believe that the next few days will grant favorable firefighting conditions. A controlled burn is planned along the Alamo trail, which will increase the defensive space between the Lab and the fire (Los Alamos County Cerro Pelado Fire Update 5 May). The fire is burning approximately 5 miles southwest of Los Alamos National Laboratory (LANL) and they have assessed that the fire threat is less significant than previous fires due to the active fire materials, previous and current mitigation efforts, and firefighting resources.

Impacts:

Safety and Security:

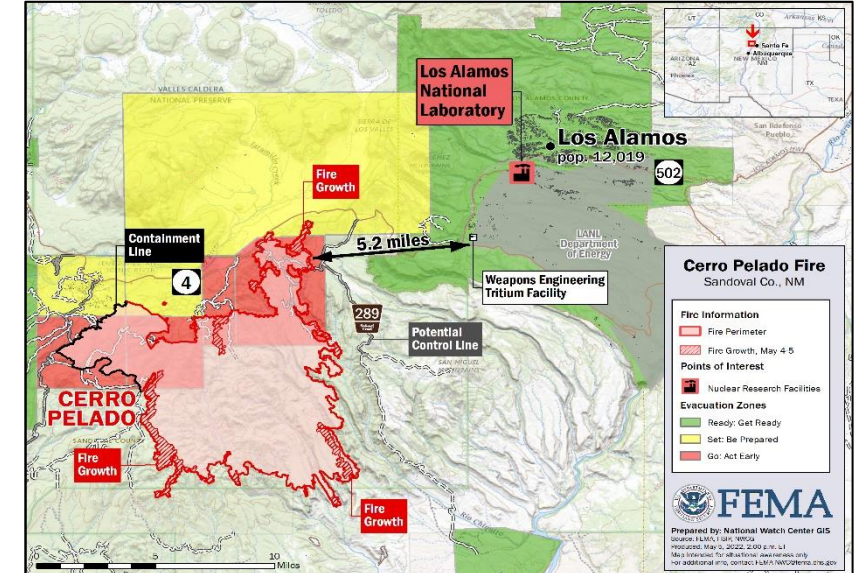
- LANL at normal operations; staff could shift to max telework with only essential staff on site if fire gets closer to the lab
- Portable weather stations installed to assist with predicting fire conditions

Food, Water, and Shelter:

- 5 (-1) shelters open / 730 (+239) occupants (ESF6/RED CROSS UPDATE: New Mexico Wildfire Response as of 6:49 a.m. ET May 6)
 - ARC coordinating with NM to open additional shelters (FEMA Region VI RRCC Incident Briefing as of 4:00 p.m. ET)
- NM Baptist Relief and Southern Baptist providing laundry and shower services
- American Red Cross POD established at Glorieta Camp for emergency supply distribution

Energy:

- FEMA coordinating with state on arriving generators for installation planning (FEMA HQ Update as of 9:00 a.m. ET)



Transportation: (New Mexico Fire Info)

- NW Highway closed from mile marker 27 to 59 for fire activity; access allowed for Sierra Los Pino's residences only
- NM State Road 4 remains closed between mile marker 35, near Jemez Springs, and mile marker 50, near the intersection of West Jemez Road



FEMA

National Watch Center

New Mexico Wildfires – Response

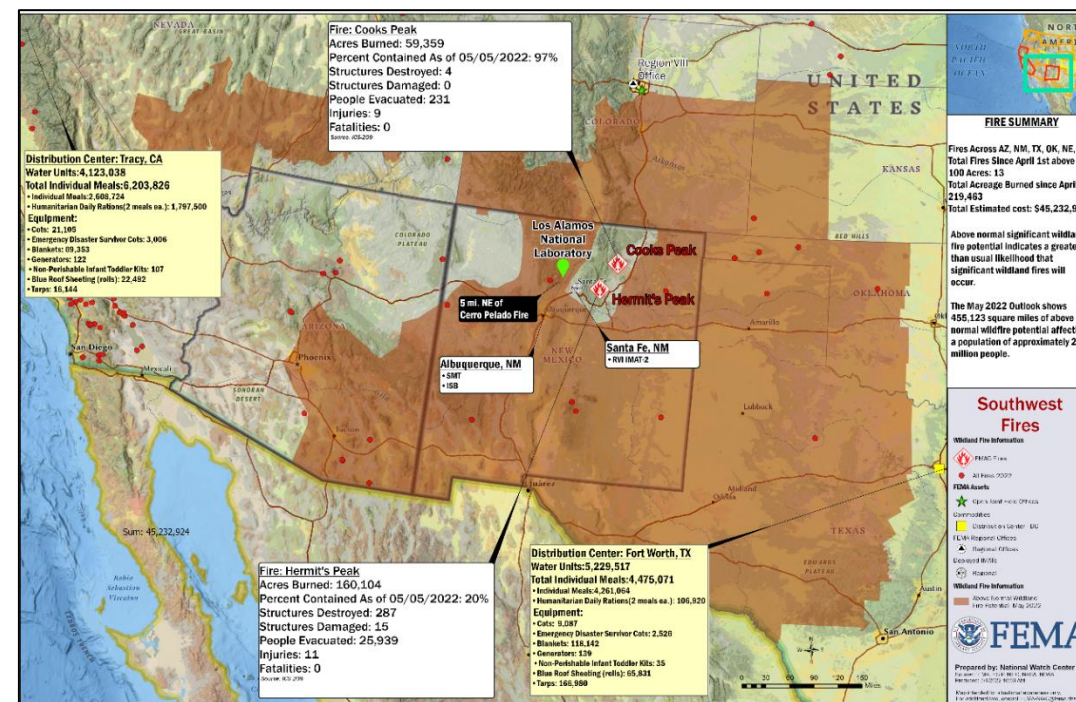
State/ Local Response:

- NM EOC at Full Activation (Wildfires)
- LANL EOC is Monitoring
- LANL activity remains under Stage 2 Fire Restrictions (prohibits outdoor burning and restricts some work activities)
- NM National Guard conducting ongoing water drops
- NM Environmental Department is monitoring all drinking water, air quality, and facilities with special chemicals
- NM coordinating with CA on EMAC requests; NM currently has (1) Type-3 Strike Team from CA in Las Vegas, NM
- NM has requested the following from CA (RFI)
 - (1) Type 3-5 Strike Team (21 pax / 5 engines) 14-day deployment to NM
 - (1) Type 2 Initial Attack (IA) Strike Team (20 pax) 14-day deployment to NM
 - (1) Recovery Specialist with watershed protection expertise. CA and NM Recovery Managers will coordinate on specifics

Federal Response:

Region VI:

- Region VI IMAT is embedded at the State Emergency Operations Center (EOC)
- Region VI RRCC at Level III (dayshift only) with ESFs 2, 4, 6, 7, 11, 12, & 15
- **Federal Coordinating Officer (FCO) deployed to NM**
- Pre-positioning commodities in NM – Charlie Pack (meals, water, shelter items for 30,000 people) and 30 pack of generators – arrival NLT May 6
- Deploying ISB/SMT to Albuquerque, NM; to arrive May 6



FEMA Headquarters:

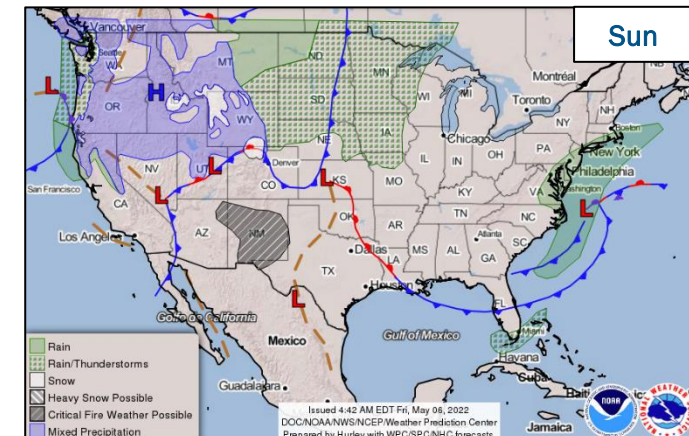
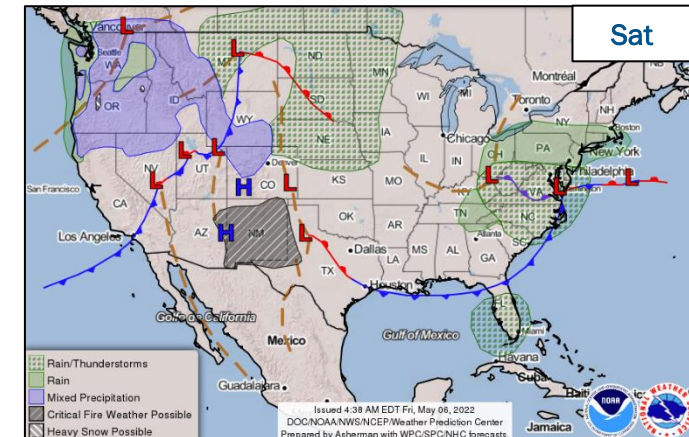
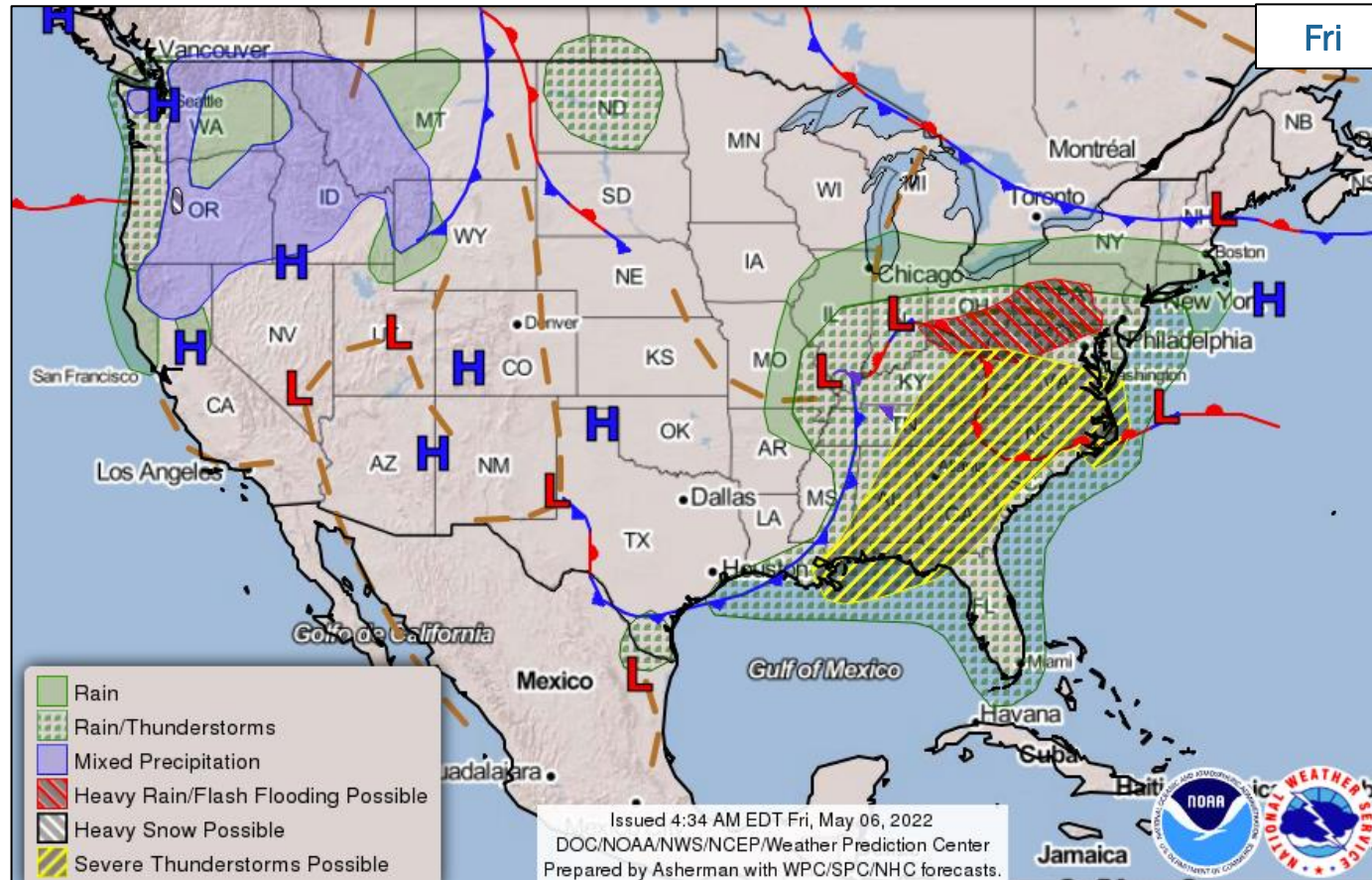
- Major Disaster Declaration FEMA-4652-DR-NM approved
- Disaster Emergency Communication (DEC) preparing to deploy C2 vehicles to support IMAT operations
- Field operations is deploying 34 DSA personnel (some with Spanish language skills); arrival NLT May 6
- FEMA activated the Interagency Modeling and Atmospheric Assessment Center (IMAAC) for potential modeling requirements



FEMA

National Watch Center

National Weather Forecast



FEMA

National Watch Center

Fri

SPC DAY 1 CATEGORICAL OUTLOOK
 ISSUED: 0558Z 05/06/2022
 VALID: 1200Z Fri 05/06 - 1200Z Sat 05/07
 FORECASTER: DEAN/SQUITIERI
 NOAA/NWS Storm Prediction Center, Norman, Oklahoma

Categorical Outlook Legend:
 TSTM 1: MRGL 2: SLGT
 3: ENH 4: MDT 5: HIGH

Sat

SPC DAY 2 CATEGORICAL OUTLOOK
 ISSUED: 0601Z 05/06/2022
 VALID: 1200Z Sat 05/07 - 1200Z Sun 05/08
 FORECASTER: GSS
 NOAA/NWS Storm Prediction Center, Norman, Oklahoma

Categorical Outlook Legend:
 TSTM 1: MRGL 2: SLGT
 3: ENH 4: MDT 5: HIGH

Sun

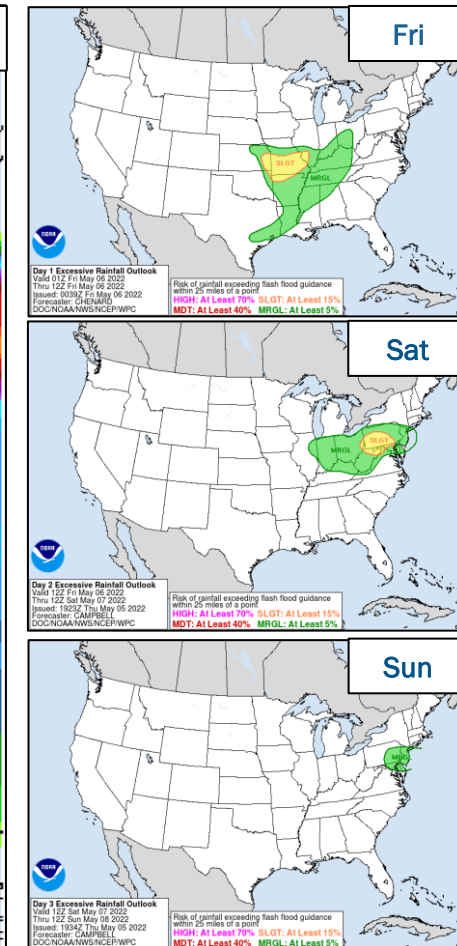
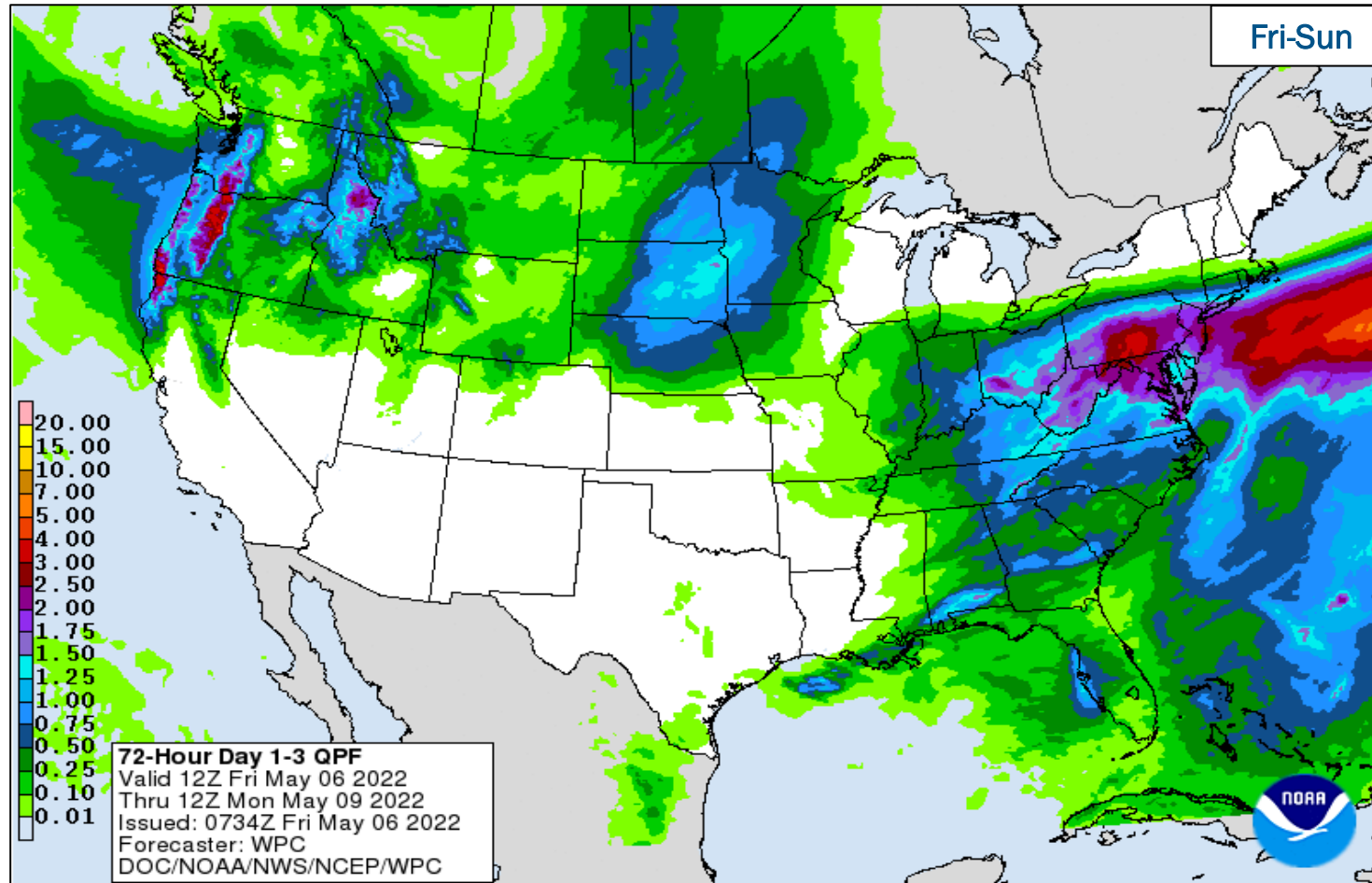
SPC DAY 3 CATEGORICAL OUTLOOK
 ISSUED: 0727Z 05/06/2022
 VALID: 1200Z Sun 05/08 - 1200Z Mon 05/09
 FORECASTER: GSS
 NOAA/NWS Storm Prediction Center, Norman, Oklahoma

Categorical Outlook Legend:
 TSTM 1: MRGL 2: SLGT
 3: ENH 4: MDT 5: HIGH



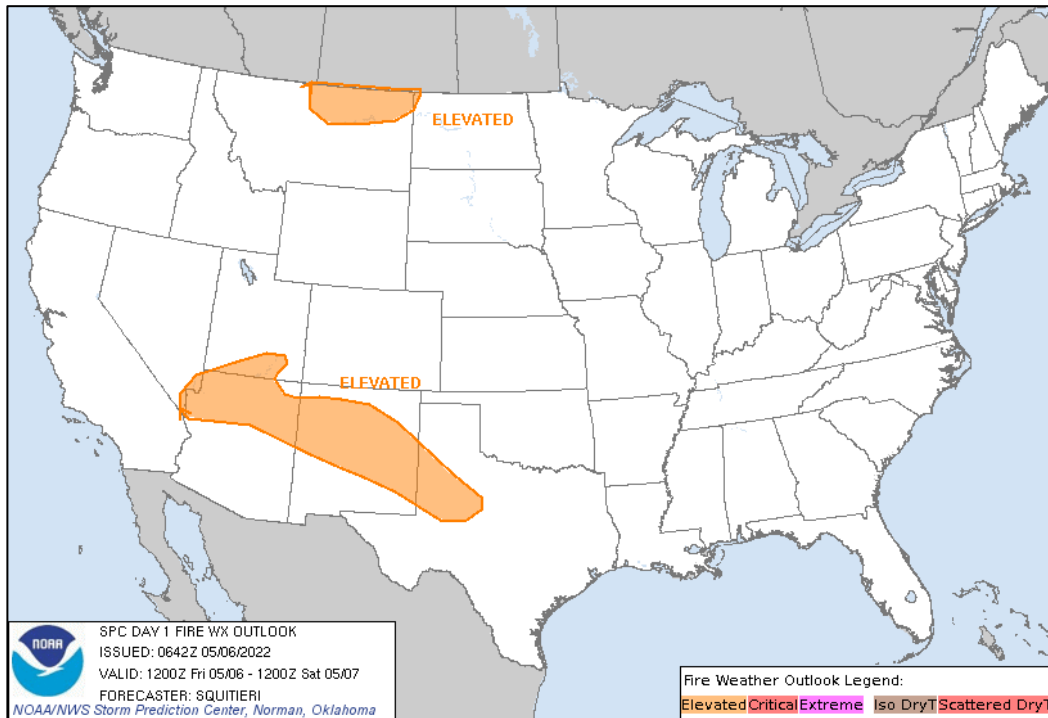
National Watch Center

Precipitation & Excessive Rainfall

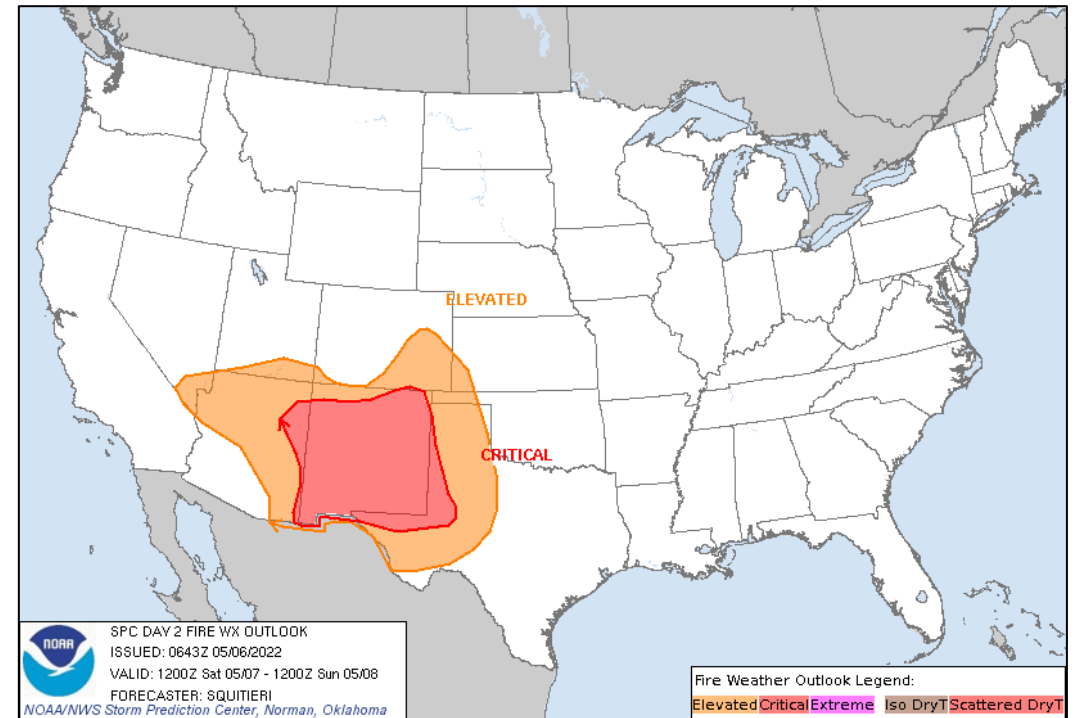


FEMA

Fire Weather Outlook



Today



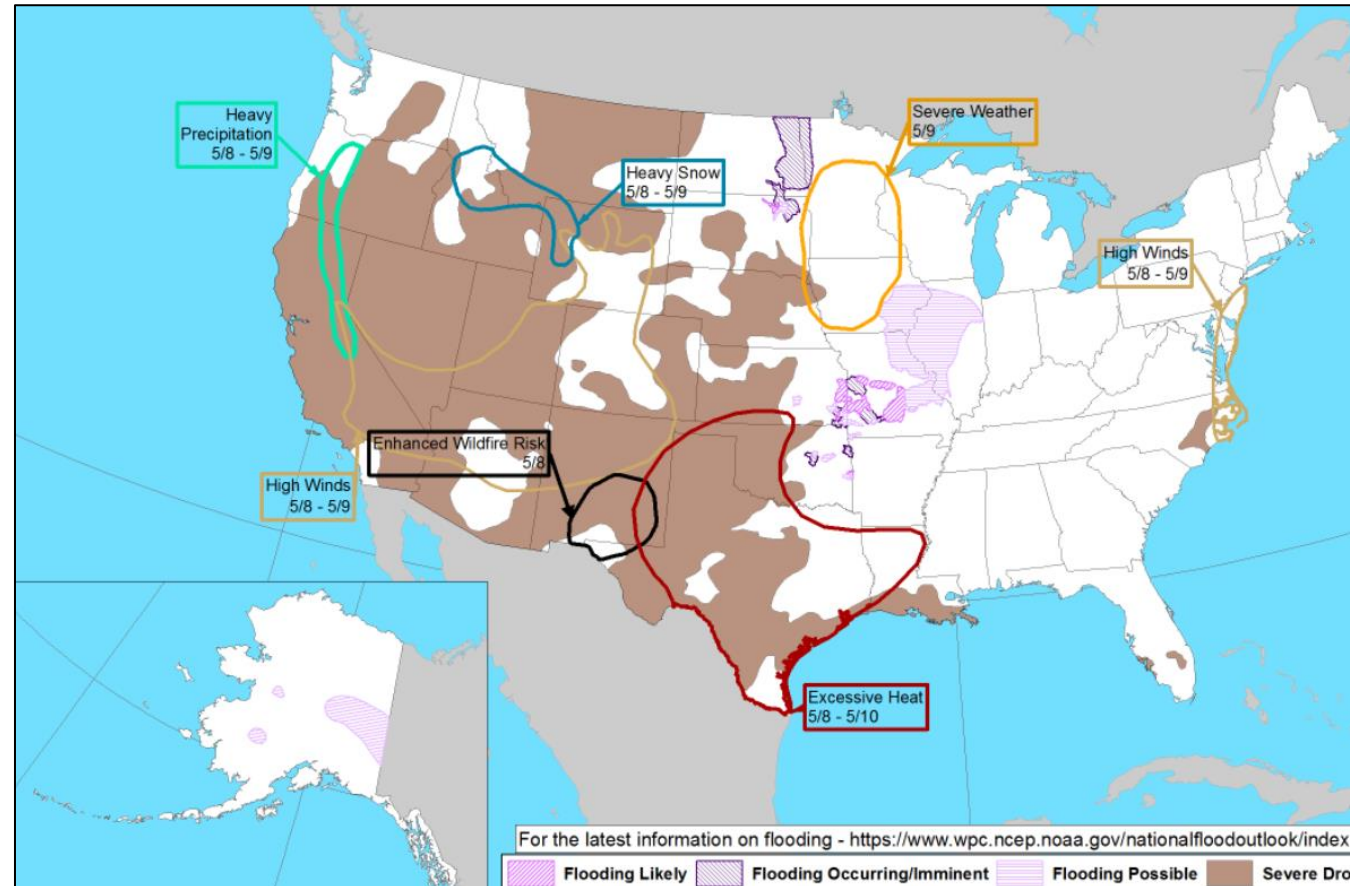
Tomorrow



FEMA

National Watch Center

Hazards Outlook – May 8-12



FEMA

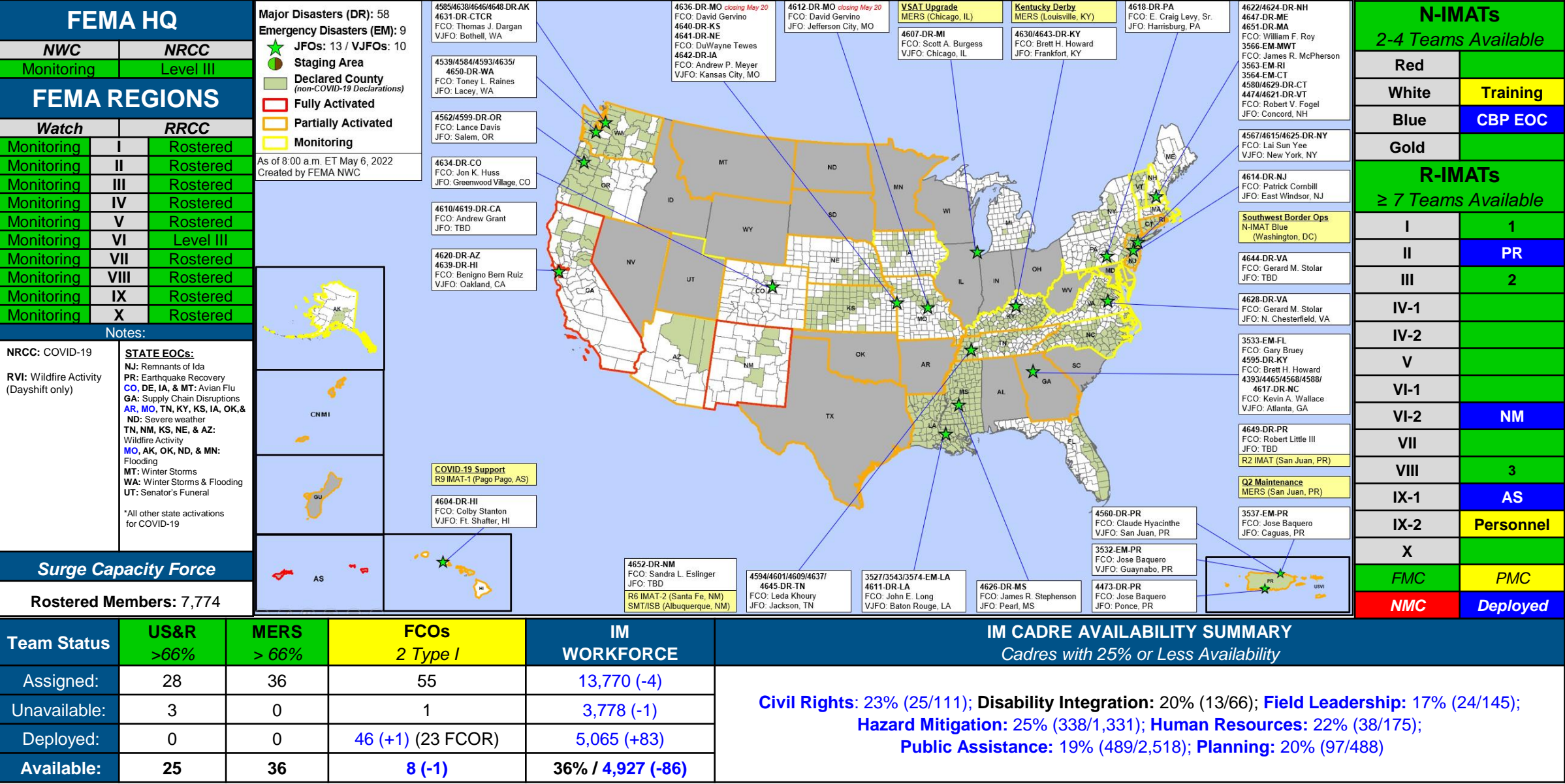
Declaration Requests in Process – 4

State / Tribe / Territory – Incident Description	Type	IA	PA	HM	Requested
RI – Severe Winter Storm and Snowstorm	DR		X	X	Apr 12
MS – Severe Storm, Straight-line Winds, and Tornadoes	DR	X		X	Apr 28
MS – Severe Storm, Straight-line Winds, and Tornadoes	DR	X		X	Apr 29
KS – Winter Storms and Straight-line Winds	DR		X	X	May 3



FEMA

FEMA Common Operating Picture





FEMA

Helping people before, during, and after disasters.



Scan to subscribe to this briefing.