

FEMA National Watch Center

Daily Operations Briefing

Thursday, May 5, 2022

8:30 a.m. ET



FEMA

National Current Ops / Monitoring

New Significant Incidents / Ongoing Ops

- Wildfires – New Mexico
- Southwest Border Coordination Support – Washington, DC
- COVID-19

Hazard Monitoring

- Severe thunderstorms – Lower Mississippi Valley to Southern Plains
- Heavy rain/flash flooding – Middle Mississippi Valley to Southern Plains

Disaster Declaration Activity

- Approval: Major Disaster Declaration – NM
- Request: Major Disaster Declaration – KS

Event Monitoring

- No significant events



FEMA

Hermit's Peak Fire – New Mexico

Fire Name (Co., ST)	FMAG #	Acres Burned	Percent Contained	Evacuations	Structures (Homes / Other)			Fatalities / Injuries
					Threatened	Damaged	Destroyed	
Hermit's Peak (San Miguel, NM)	5438-FM-NM	160,104 (+12,195)	20%	M: 25,939	H: 18,145 (+3,227)	H: 9 (+1)	H: 170 (+52)	0 / 11 (+4)
				V: 0	O: 0	O: 6	O: 117 (-33)	

Current Situation: The fire remains extremely active due to high winds, low humidity, high temperatures, and dry fuels. Steep terrain and previous fire scars continue to impede suppression activity in some locations. Officials continue to warn the public that this fire is anticipated to be a long-term event.

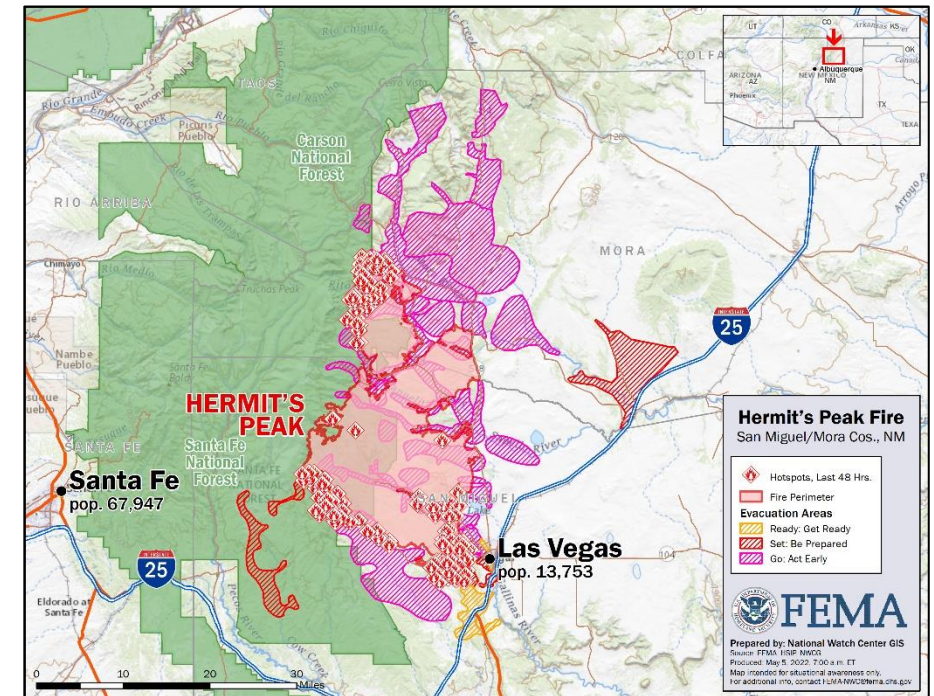
Impacts:

Safety and Security:

- Sheltering in place: 2,130

Transportation:

- Multiple roads closed
- Highways 94, 518, 442, and B028 are open for evacuation only



FEMA

National Watch Center

Cerro Pelado Fire – New Mexico

Fire Name (Co., ST)	FMAG #	Acres Burned	Percent Contained	Evacuations	Structures (Homes / Other)			Fatalities / Injuries
					Threatened	Damaged	Destroyed	
Cerro Pelado (Sandoval, NM)	No FMAG Requested	26,927 (+1,923)	13%	M: 634	H: 34	H: 0	H: 3	0 / 1
				V: 0	O: 0	O: 0	O: 6	

Current Situation: Low to moderate fire behavior continues, with spread primarily occurring to the north and east. Elevated fire weather conditions continue with high winds, low relative humidity, and high temperatures. The fire is burning approximately 5.2 miles southwest of Los Alamos National Laboratory (LANL) and they have assessed that the fire threat is less significant than previous fires due to the active fire materials, previous and current mitigation efforts, and firefighting resources.

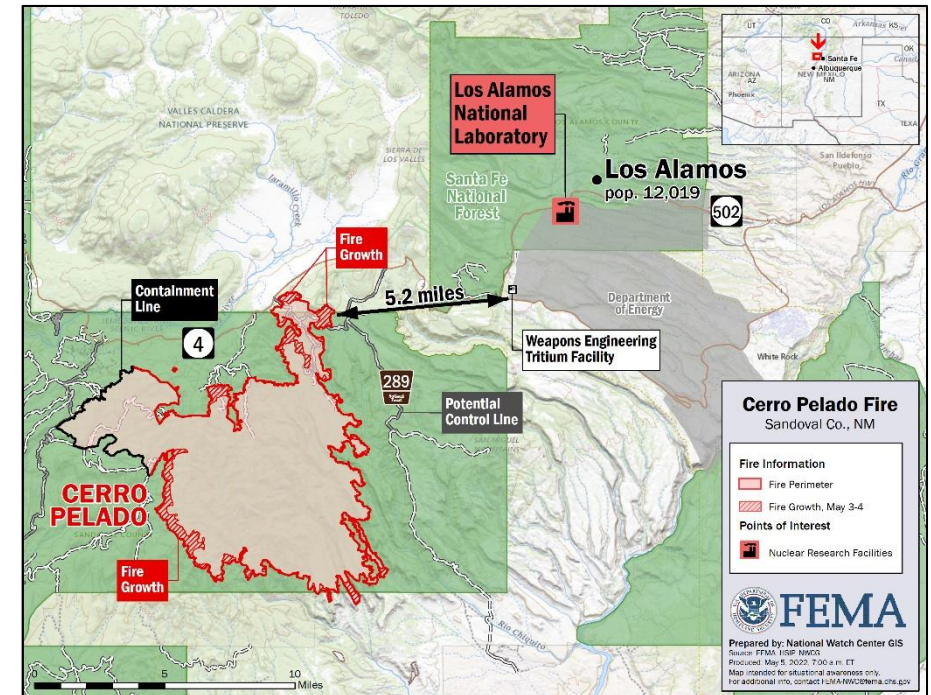
Impacts:

Safety and Security:

- LANL at normal operations; staff could shift to max telework with only essential staff on site if fire gets closer to the lab
- Portable weather stations installed to assist with predicting fire conditions

Food, Water, and Shelter:

- 6 (+3) shelters open / 491 (+12) occupants (Region VI IMAT-2 SITREP as of 8:42 a.m. ET May 4)
- NM Baptist Relief and Southern Baptist providing laundry and shower services



FEMA

Wildfire Summary

Fire Name (Co., ST)	FMAG #	Acres Burned	Percent Contained	Evacuations	Structures (Homes / Other)			Fatalities / Injuries
					Threatened	Damaged	Destroyed	
Cooks Peak (Colfax, NM) FINAL	5437-FM-NM	59,359	97% (+8)	M: 231	H: 74	H: 0	H: 0	0 / 9
				V: 0	O: 0	O: 0	O: 4	

(Evacuations: M = Mandatory / V = Voluntary; Structures: H = Homes and Mixed Commercial/Residential / O = Non-residential Commercial/Other Minor Structures)

Declaration Approval – New Mexico

Declaration: Major Disaster Declaration – FEMA-4652-DR-NM

Date Requested: May 4

Date Approved: May 4

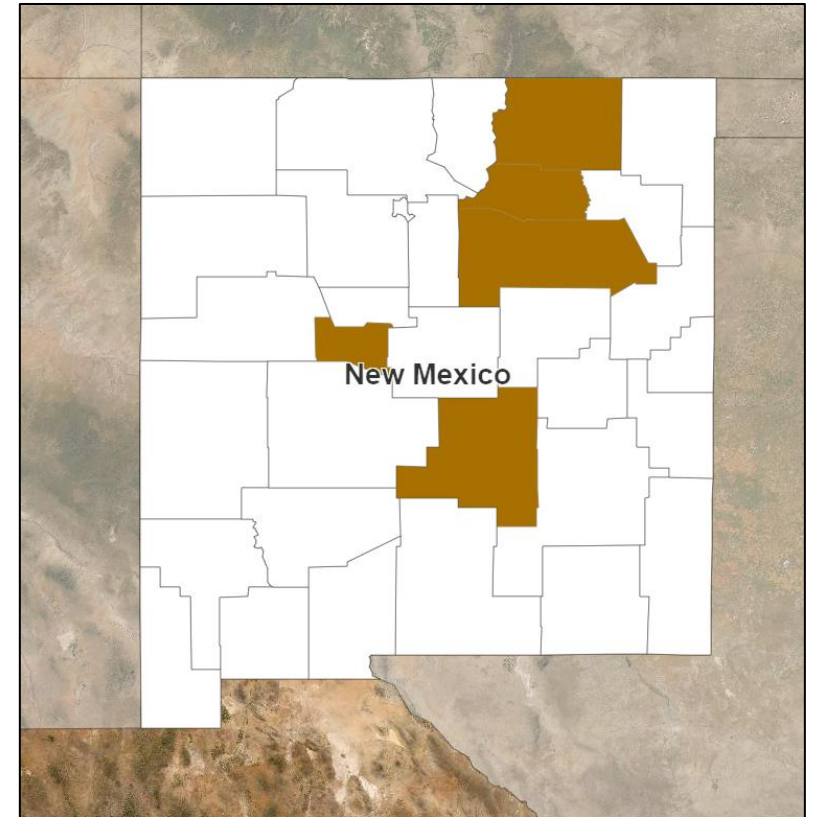
Incident: Wildfires and Straight-line Winds

Incident Period: Apr 5 and continuing

Provides:

- **IA & PA:** 5 counties
- **Hazard Mitigation:** Statewide

FCO: Sandra L. Eslinger



■ IA & PA



FEMA

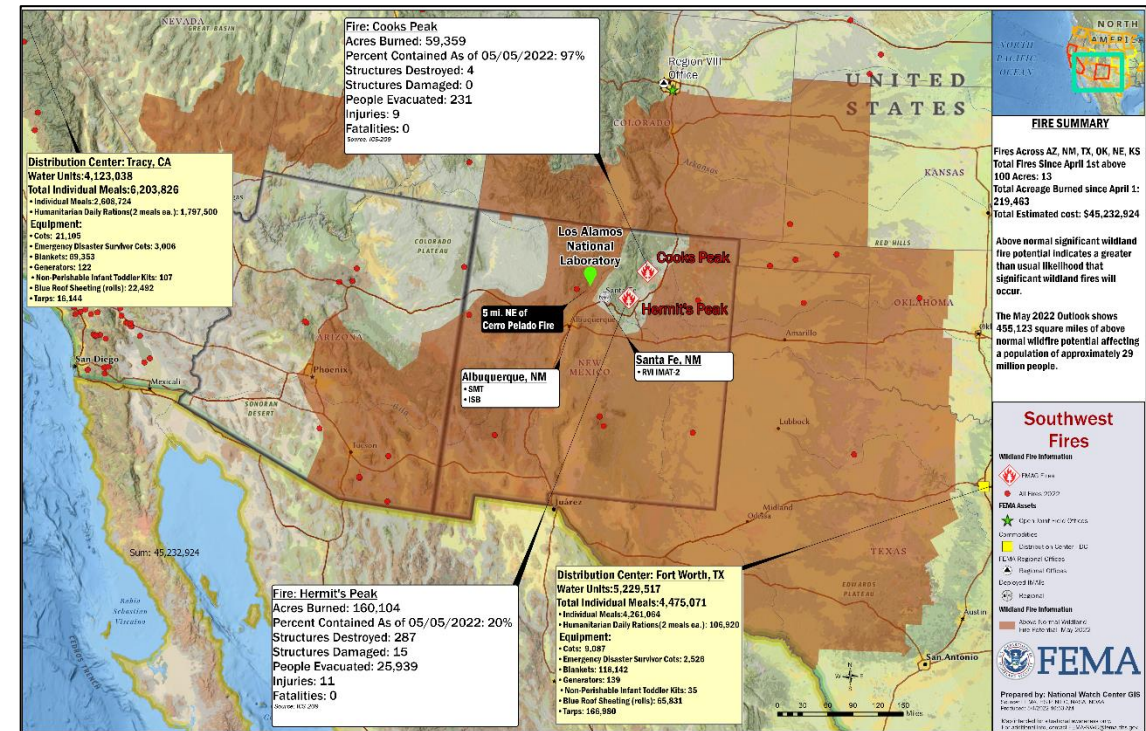
New Mexico Wildfires – Response

State/ Local Response:

- 645 (+79) personnel assigned, including 33 (+1) engines and 2 Type-1 hotshot crews

Federal Response::

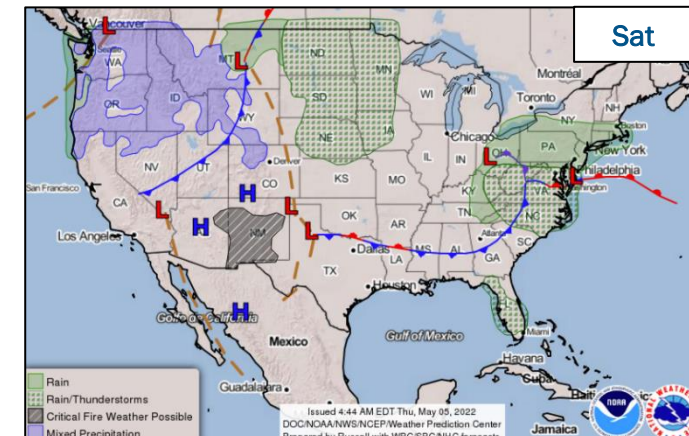
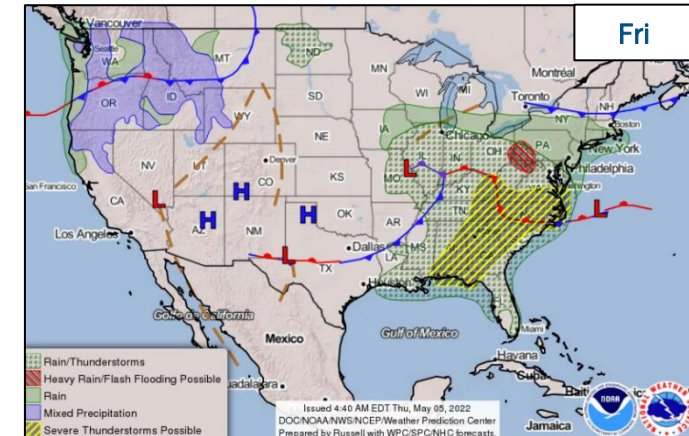
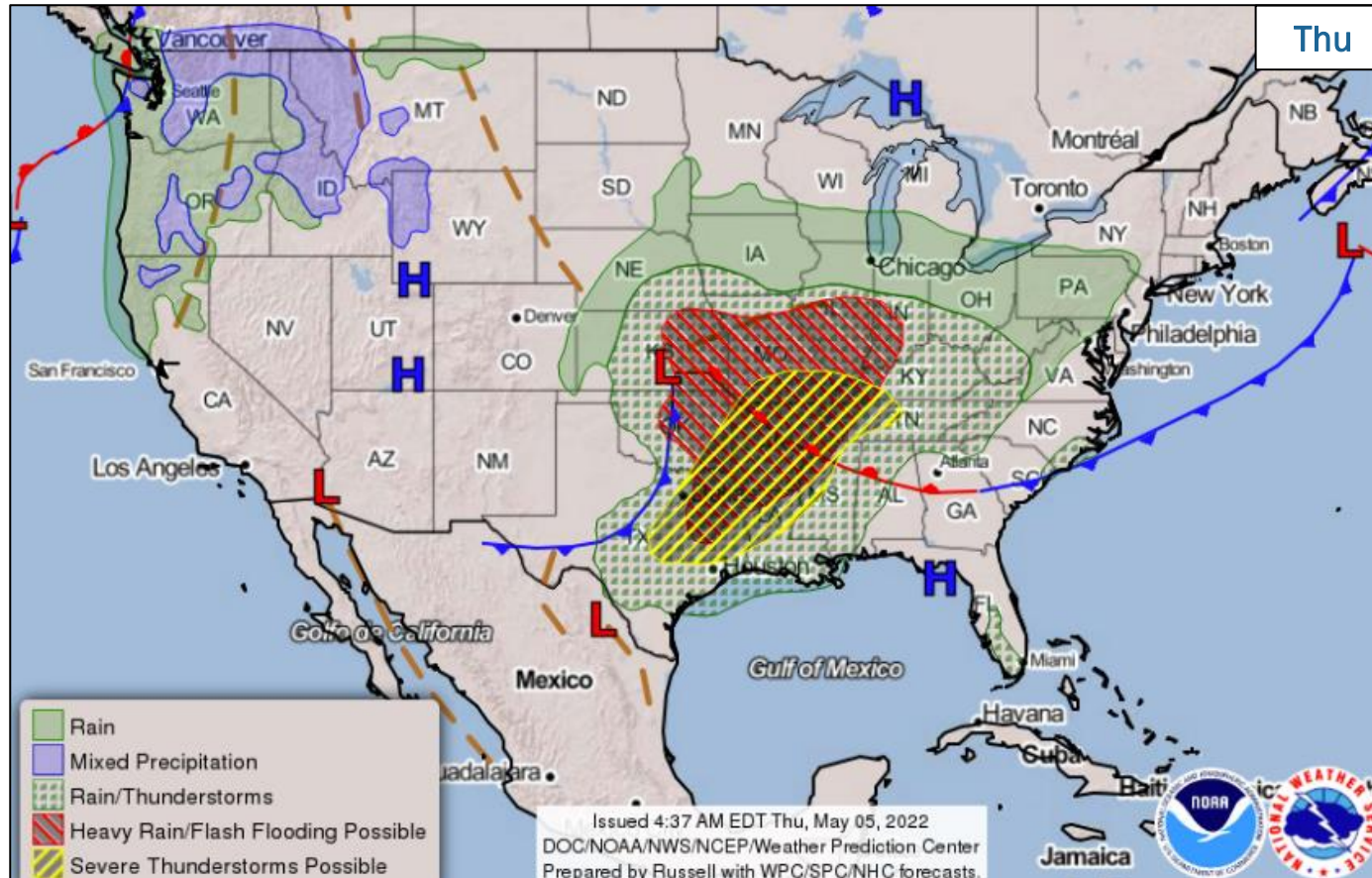
- NM EOC at Full Activation (Wildfires)
- FEMA Region VI / NWC continue to monitor
- FEMA activated the Interagency Modeling and Atmospheric Assessment Center (IMAAC) for potential modeling requirements
- Region VI RRCC at Level III (dayshift only); with ESFs 2, 4, 6, 7, 11, 12, 15
- Deploying ISB/SMT to Albuquerque, NM; to arrive today
- Deploying pre-designated FCO to NM – to arrive today
- Pre-positioning commodities in NM – Charlie Pack (meals, water, shelter items for 30,000 people) and 30 pack of generators – arrival May 6
- Disaster Emergency Communication (DEC) preparing to deploy C2 vehicles to support IMAT operations
- Field operations deploying 34 DSA personnel (some with Spanish language skills); arrival May 6
- Major Disaster Declaration FEMA-4652-DR-NM approved
 - Provides: Public and Individual Assistance for 5 counties and Hazard Mitigation statewide



FEMA

National Watch Center

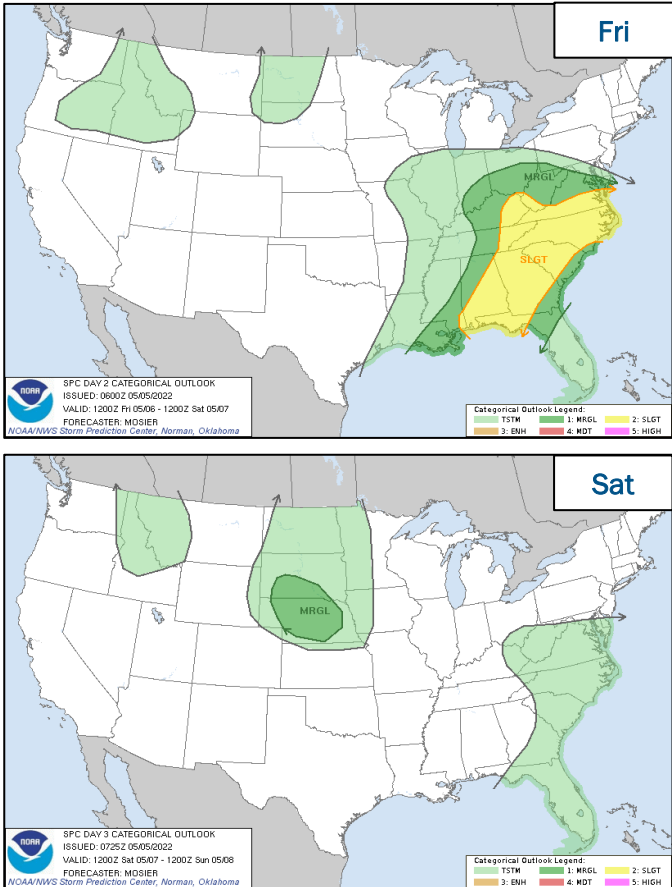
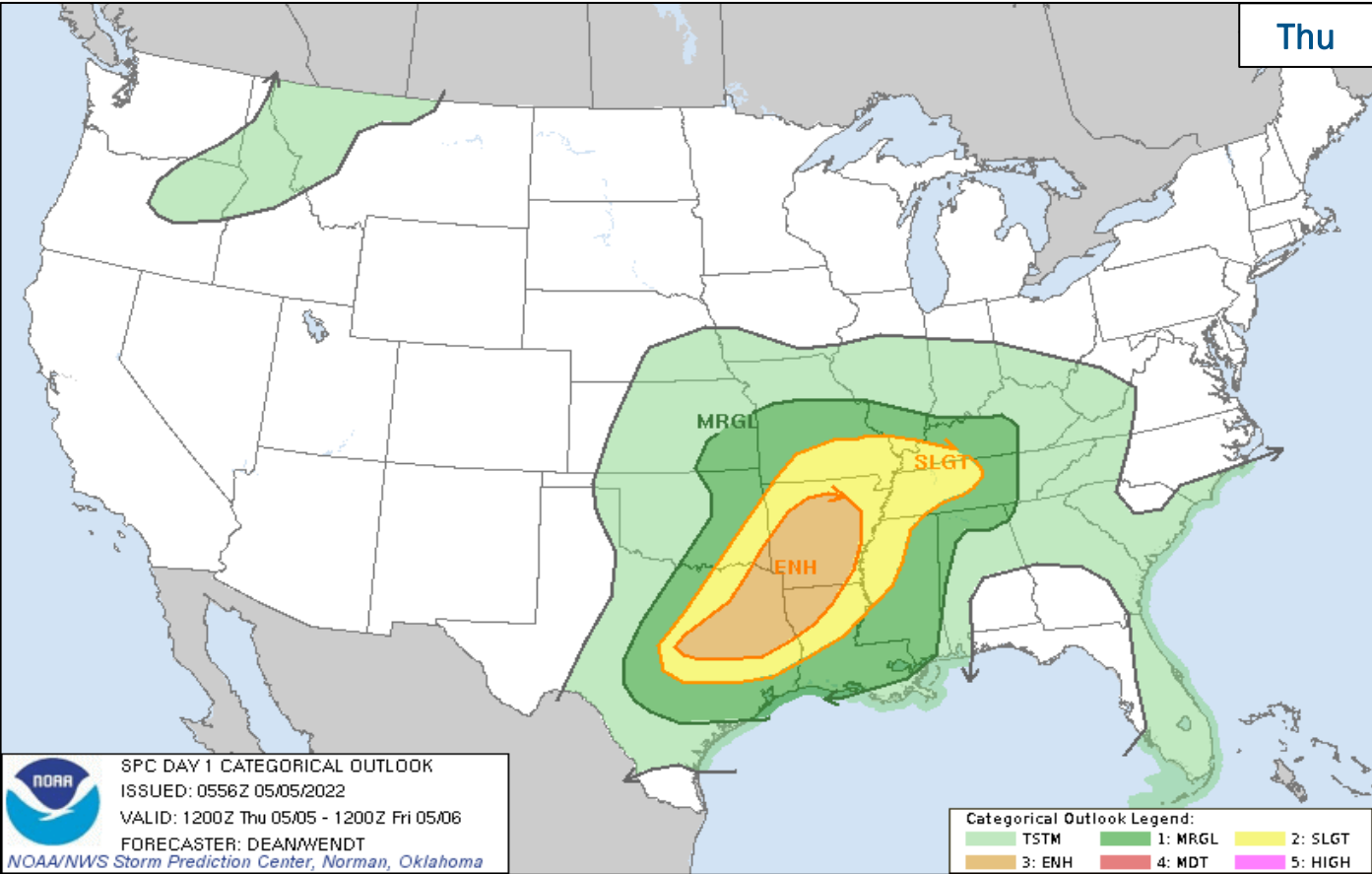
National Weather Forecast



FEMA

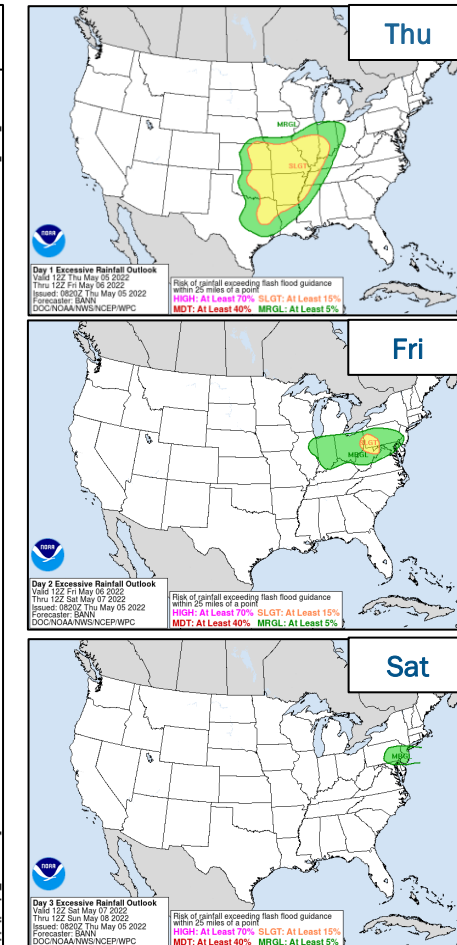
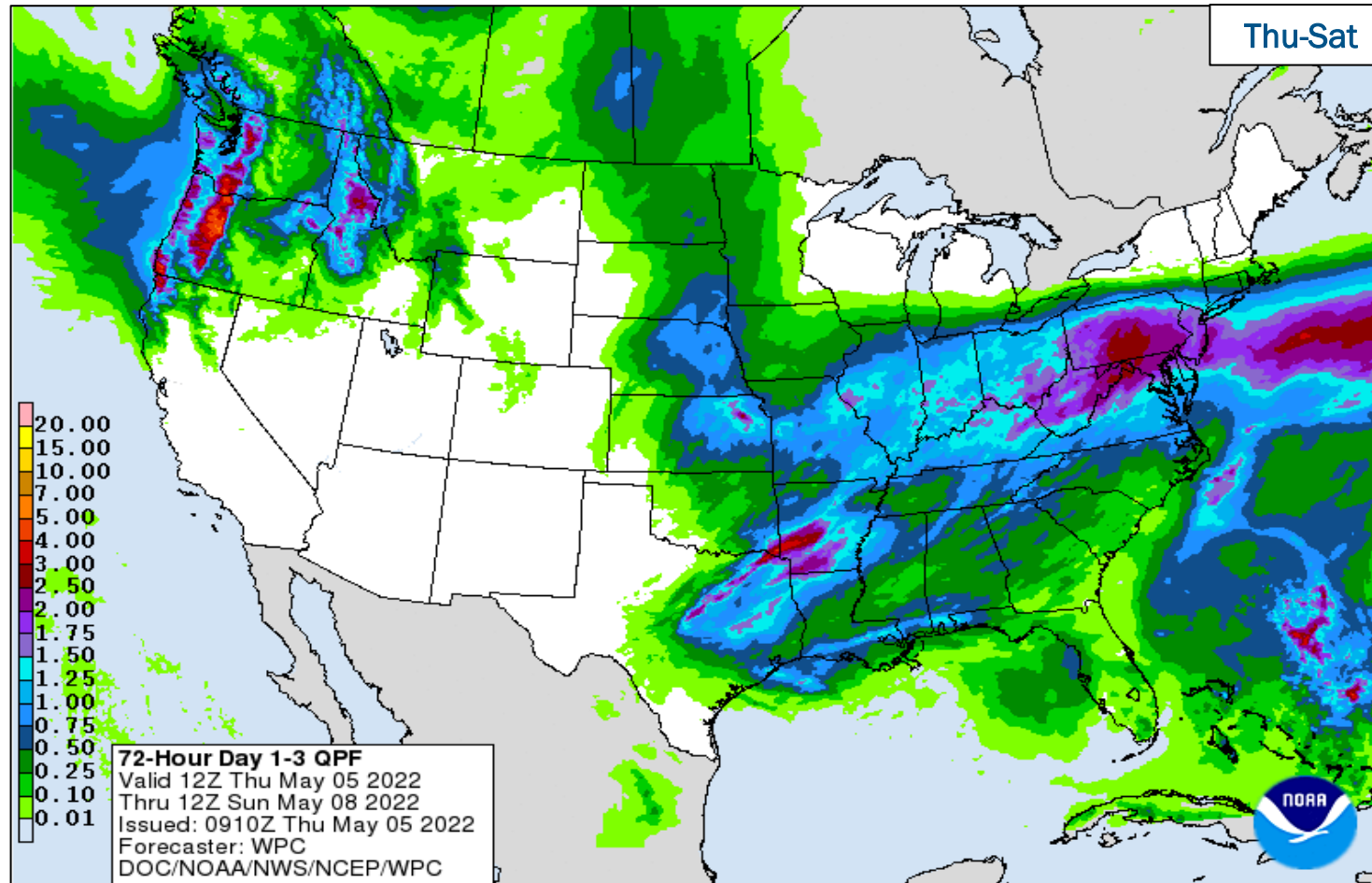
National Watch Center

Severe Weather Outlook



FEMA

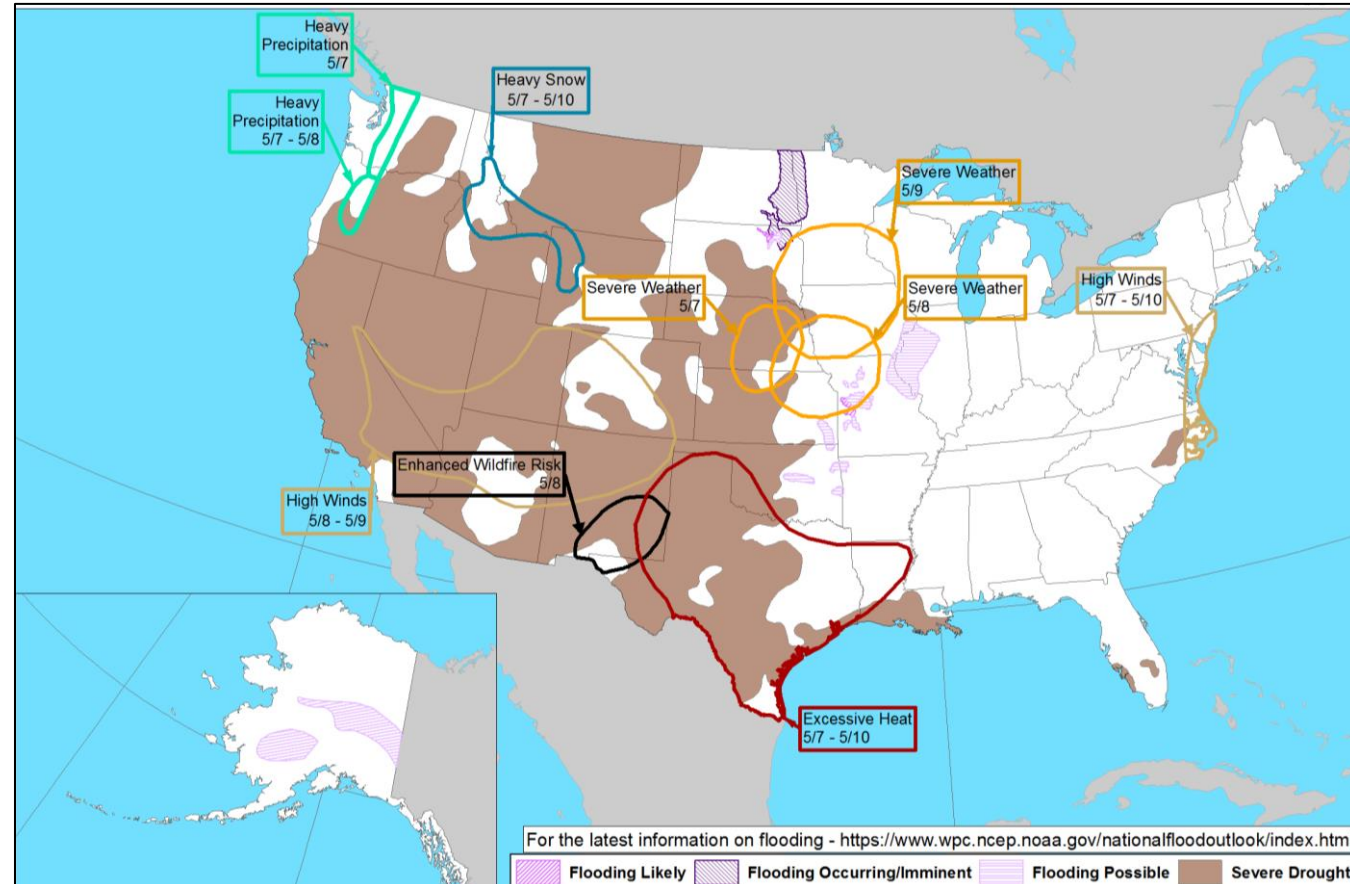
Precipitation & Excessive Rainfall



FEMA

National Watch Center

Hazards Outlook – May 7-11



FEMA

National Watch Center

Declaration Request – Kansas

Declaration Type: Major Disaster – KS

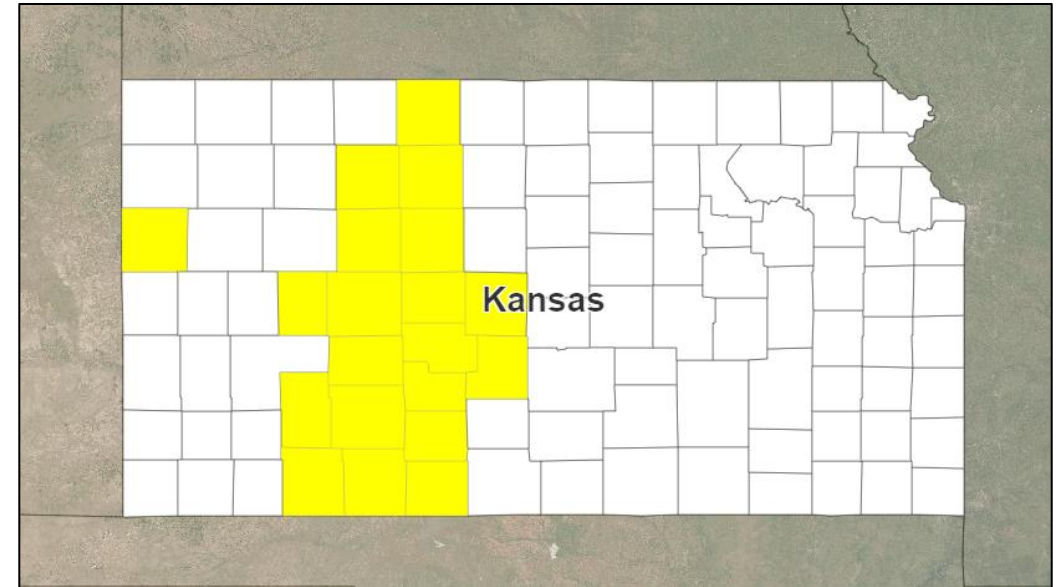
Requested: May 3

Incident: Winter Storms and Straight-line Winds

Incident Period: Mar 17-22

Requested:

- **PA:** 20 counties
- **Hazard Mitigation:** Statewide



■ PA



FEMA

National Watch Center

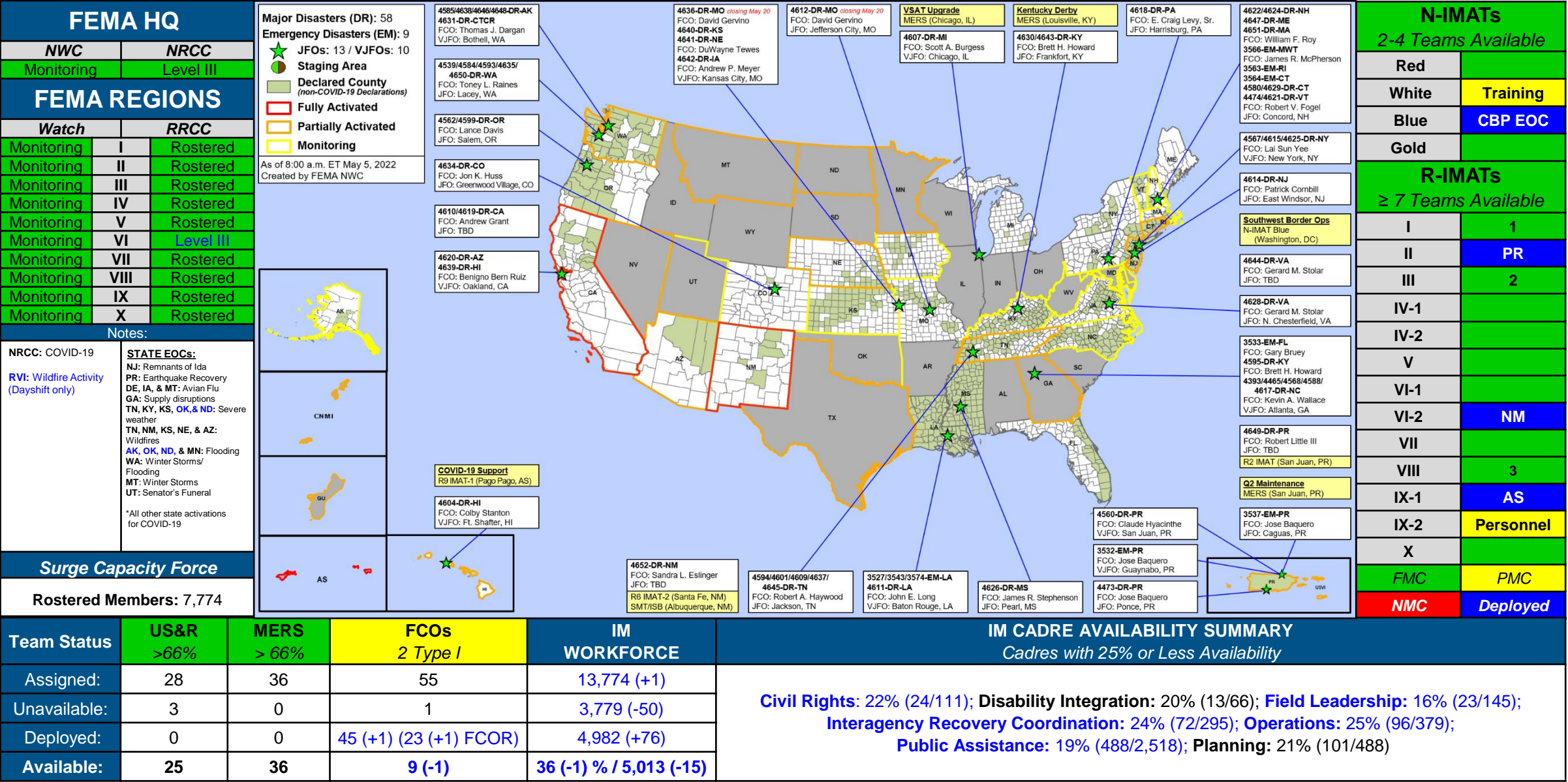
Declaration Requests in Process – 4

State / Tribe / Territory – Incident Description	Type	IA	PA	HM	Requested
RI – Severe Winter Storm and Snowstorm	DR		X	X	Apr 12
MS – Severe Storm, Straight-line Winds, and Tornadoes	DR	X		X	Apr 28
MS – Severe Storm, Straight-line Winds, and Tornadoes	DR	X		X	Apr 29
NM – Wildfires and Straight-line Winds – Approved	DR	X	X	X	May 3
KS – Winter Storms and Straight-line Winds	DR		X	X	May 3



FEMA

FEMA Common Operating Picture



FCO Senior Leadership COP Brief FEMA 4645-DR-TN: Robert Haywood

Recovery Outcomes

INDIVIDUAL ASSISTANCE SUMMARY

Valid Registrations
NA

Individuals and Households Program
Disbursed NA

Small Business Admin Loans
NA

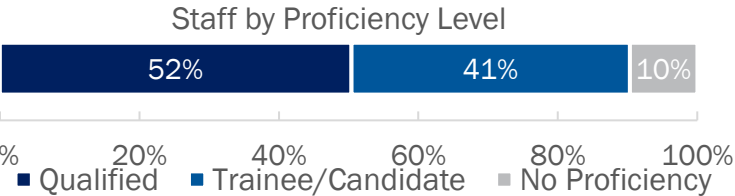
Housing Assistance
Disbursed NA

NFIP Payouts
NA

Other Needs Assistance
Disbursed NA

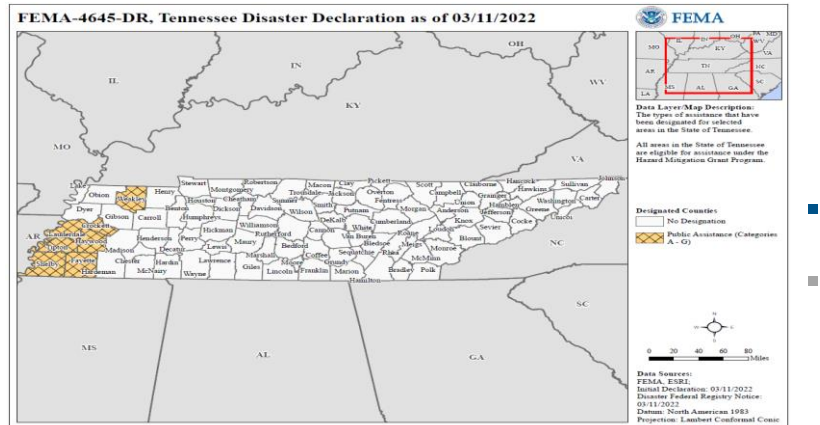
STAFF SUMMARY

Total Staff: 17 | Coach/Evaluators: 6



INCIDENT SUMMARY

On March 11, 2022, a Presidential Declaration for FEMA-4645-DR was authorized designating Public Assistance (Cat A-G) for seven (7) counties: Crockett, Fayette, Haywood, Lauderdale, Shelby, Tipton, and Weakley. Hazard Mitigation for all areas of TN under the Hazard Mitigation Grant Program.



FCO ASSESSMENT

Priorities

- Deliver Integrated Recovery Strategies and outcomes focused on Infrastructure, Health & Social Services and Community Recovery

Outcomes

- Infrastructure: Utilities and transportation systems have been restored, repaired, modernized, and strengthened for future disasters.
- Health & Social Services: Sustainable and resilient health education and social service systems
- Community Recovery: Resilient recovery of SLTT communities

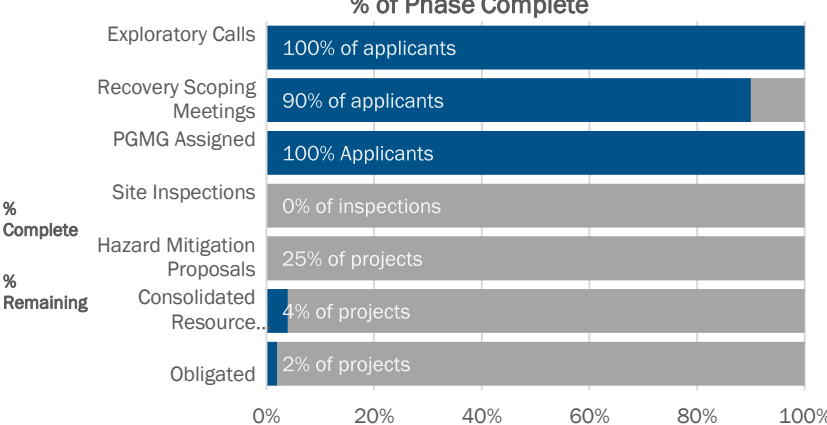
PUBLIC ASSISTANCE SUMMARY

Applicants: 28

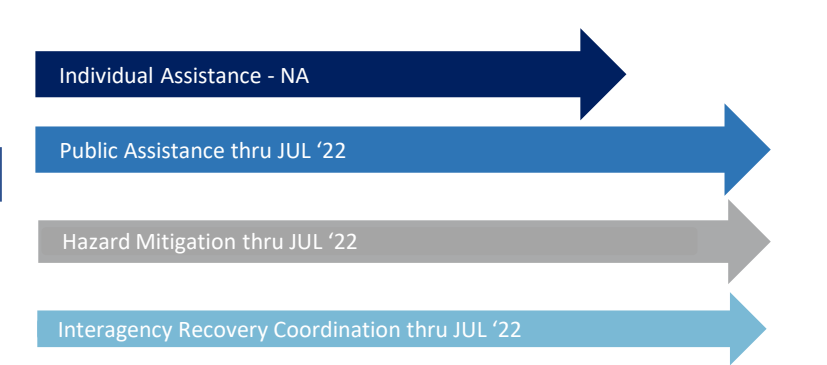
Projects: 58

\$ Obligated \$789 K

Life of Disaster \$41 M (Est)



TRANSITION TIMELINE



National Watch Center

FCO Senior Leadership COP Brief FEMA 4645-DR-TN: Robert Haywood

Recovery Outcomes

Recovery Outcomes		
Housing	Housing: Adequate, resilient, accessible, and affordable housing	
	1	All survivors whose primary residences were damaged or destroyed or were displaced by the disaster have returned and re-established residence in permanent housing within the affected community
	2	Survivors can afford post-disaster permanent housing units within the affected community without post-disaster assistance
	3	Post-disaster permanent housing units in the affected community meet or exceed recognized residential codes and standards and incorporate recommended mitigation measures appropriate to the area's hazards (e.g., flooding, fire, high winds), or include resiliency measures
	4	
Economic	Economic: Sustainable, diversified and resilient economy	
	1	Business activities are resumed and restored, including those of key local businesses and major employers
	2	Local and state government ability to facilitate and regulate business activities is restored
	3	Tax base and revenue streams from businesses are restored
	4	Communities have Comprehensive Economic Development Strategies that measures the recovery process
	5	Financial activities essential to credit and insurance coverage and flows are restored
Community Recovery	Community Recovery: Resilient recovery of SLTT communities	
	1	Community Conditions Assessment + Community Profiles
	2	Status of emergency plans, such as the Mitigation plan and Pre-Disaster Recovery Plan
	3	Community engagement and communication strategy is in place for long term recovery plan or strategy
	4	Mitigation and recovery projects have been implemented
	5	Inclusive communications strategy developed for long-term recovery planning or strategy

Recovery Outcomes		
Infrastructure Systems	Infrastructure: Restored, modernized, hardened and resilient systems	
	1	Power systems and fuel delivery services have been repaired, modernized, and strengthened for future disasters
	2	Water systems, dams, levees, and service capacities have been repaired, modernized, and strengthened for future disasters
	3	Communication systems and services have been repaired, modernized, and strengthened against future disasters
	4	Public and private transportation systems, to include those supporting marginalized areas are repaired and reliable
	5	Government and PNP facilities have been repaired, modernized and strengthened for future disasters
Health & Social Services	HSS: Sustainable and resilient health education and social service systems	
	1	Households have safe drinking water and no hazardous and toxic materials
	2	Healthcare providers have resumed capacity to meet chronic or long-term health need, primary and emergency care needs
	3	Ensure survivors are provided necessary behavioral health and disaster case management services
	4	Social Assistance programs that support vulnerable populations, e.g., have resumed delivery of financial and other material support and services to vulnerable segments of the community's population
	5	Schools are fully operational & providing full academic programs and can provide a safe, sanitary, and supportive environment
Natural & Cultural Resources	NCR: Restored, preserved, risk-resistant and resilient resources	
	1	Natural resources in the affected community, to include socially marginalized, have been restored to protect people and ecosystems
	2	Resources associated with entertainment, education, recreation, and tourism have been repaired, and public accessibility restored
	3	Access to raw material and other commodities that sustain the local economy has been restored
	4	Sites and artifacts associated with the community's heritage and identity have been stabilized/protected, and public accessibility to these sites has been restored



FEMA

FCO Senior Leadership COP Brief FEMA 4645-DR-TN: Robert Haywood

Recovery Outcomes

COMMUNITY RECOVERY: Resilient recovery of SLTT communities

Recovery Outcome #3: Community engagement and communication strategy is in place for long term recovery plan or strategy

- Inter-agency Recovery Coordination
- Local and Regional Disaster Recovery Partnerships
- Disaster Recovery Networks
- Local Disaster Recovery Manager (NDRF)
- EDA support



FEMA

FCO Senior Leadership COP Brief FEMA 4645-DR-TN: Robert Haywood

Recovery Outcomes

INFRASTRUCTURE SYSTEMS: Restored, modernized, hardened and resilient systems

Recovery Outcome #1: Power systems and fuel delivery services have been repaired, modernized, and strengthened for future disasters

- Data-driven decision-making
- SVI data utilization
- PA PDMG assignments
- Integrated Operations Coordination Model



FEMA

National Watch Center



FEMA

Helping people before, during, and after disasters.



Scan to subscribe to this briefing.