

FEMA National Watch Center

Daily Operations Briefing

Tuesday, April 8, 2025

8:30 a.m. ET



FEMA

National Current Ops / Monitoring

New Significant Incidents / Ongoing Ops

- Severe Weather / Flooding – Ohio Valley to the Lower Mississippi Valley

Hazard Monitoring

- Heavy Snow – Northeast
- Elevated Fire Weather – Central Plains

Disaster Declaration Activity

- No new declaration activity

Event Monitoring

- No new significant events



FEMA

Severe Weather / Flooding – Ohio Valley to the Lower Mississippi Valley



Situation: Severe storms of last week left lasting flooding impacts from the Ohio Valley to the Lower Mississippi Valley. Flood conditions are expected to persist for the next 3 to 7 days, especially from Central Kentucky to Arkansas. Federal resources are focused on search and rescue, communications, commodity needs and supporting impacted water systems. FEMA Region IV and VI RRCs, along with the NRCC, remain activated in support of state partners. Aerial assessments were conducted in Arkansas on April 7, and joint preliminary damage assessments (PDAs) began in Tennessee, with plans for Kentucky once conditions permit. (National SLB, as of 6:04 p.m. ET)

Lifeline Impacts: (National SLB, as of 6:04 p.m. ET, Apr 7)

Safety & Security: Safety and rescue ops ongoing

- FEMA RIV:
 - KY:
 - State EOC along with government buildings at risk for potential flooding in Frankfort. All state office buildings closed on Apr 7 due to flooding.
 - Dundee, KY (pop. approx. 20) and Hartford, KY (pop. 2.7k) along the Rough River are areas of concern for potential isolated access

Food, Hydration, Shelter: (ARC, as of 6:50 a.m. ET, Apr 8)

- FEMA RIV:
 - KY: 19 (+3) shelters / 146 (-7) occupants
 - Federal food and hydration commodities are being staged per state request
 - TN: 5 shelters / 13 (+3) occupants
- FEMA RV:
 - IN: 5 shelters / 35 (+2) occupants
 - MI: 8 shelters / 26 (-18) occupants
 - OH: 2 shelters / 5 (+2) occupants
 - IL: 2 (-1) shelters / 1 (-20) occupants
- FEMA RVI:
 - AR: 4 shelters / 26 (+17) occupants
- FEMA RVII:
 - MO: 1 shelter / 3 (-1) occupants

Health & Medical: 20 fatalities have been reported for the affected regions

- FEMA RIV: (Region IV RWC, as of 4:30 p.m. ET)
 - KY: 2 fatalities / 6 injuries / 1 missing (KY Governor, as of 10:00 a.m. ET)
 - TN: 10 fatalities / 0 injuries
- FEMA RV: (Region V RWC, as of 4:30 p.m. ET)
 - IN: 3 fatalities / 1 injury
- FEMA RVI: (Region VI RWC, as of 4:30 p.m. ET)
 - AR: 2 (+1) fatalities / 12 (+12) injuries
- FEMA RVII: (Region VII RWC, as of 4:30 p.m. ET)
 - MO: 3 fatalities / 1 injury

Water Systems: Flooding is impacting wastewater systems in affected areas

- FEMA RIV: (National SLB, as of 6:04 p.m. ET, Apr 7 and Region IV RWC, as of 8:27 a.m. ET)
 - KY: 4,085 (+1,185) water service connections under boil water advisories; 18 (-10) water systems under limited operations. Approx 827 people are without water service. 29 wastewater systems are under limited operations with 5 non-operational.
 - TN: 3 water systems on boil advisories impacting 1500 connections; 2 (-12) wastewater systems are being monitored for flood impacts
- FEMA RVI:
 - AR: ESF-10 corrected discharge issues at Wastewater treatment plants in St. Francis County

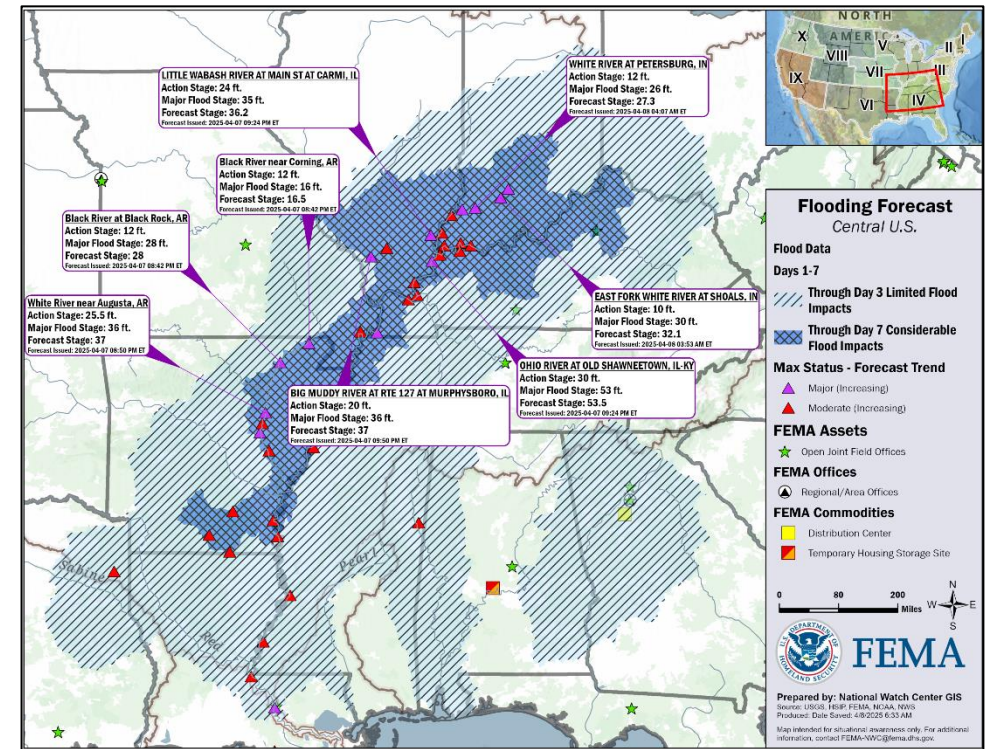
Energy: Minimal Power outages throughout affected areas (Eagle-I as of 7:00 a.m. ET)

Communications: Minimal impacts reported to communications infrastructure

Transportation: Several roadways closed due to flooding in impacted areas

- FEMA RIV:
 - KY:
 - 535 (-3) road closures reported, including I-69, I-65, and numerous state and local highways.

- FEMA RVI:
 - AR:
 - Number of flood impacted highways is trending down and pending roadway damage assessments
 - 76 (-17) highways with flooding impacts, primarily in Jackson County with impacts also in Independence and Mississippi Counties



Hazardous Materials: Minimal impacts reported in affected areas

- FEMA RVI:
 - AR:
 - AR ESF-10 assisting with 1 confirmed farm fuel release in Monette, as well as 1 fueling station and 1 wastewater treatment plant inundated



Severe Weather / Flooding – Ohio Valley to the Lower Mississippi Valley



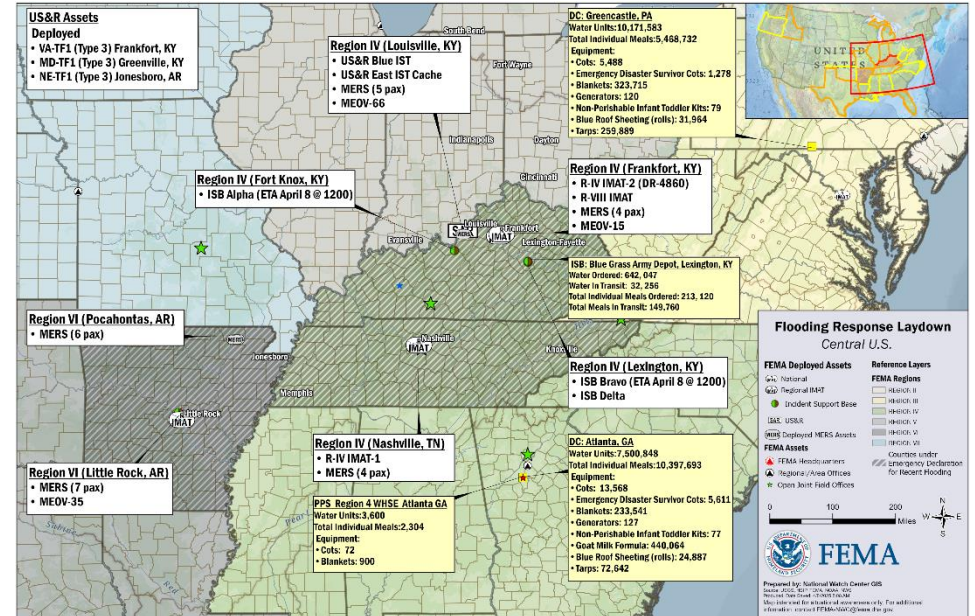
State / Local Response: (DSARs and Regional Updates)

- FEMA RIV:
 - KY: KY SEOC at Full Activation
 - Emergency Declaration (FEMA-3626-EM-KY) approved Apr 4
 - TN: TN SEOC is at Partial Activation
 - Emergency Declaration (FEMA-3625-EM-TN) approved Apr 3
- FEMA RV:
 - IN, IL, MI SEOCs at Partial Activation
- FEMA RVI:
 - AR SEOC is at Full Activation
 - Emergency Declaration (FEMA-3627-EM-AR) approved Apr 5
- FEMA RVII:
 - MO SEOC at Partial Activation

FEMA / Federal Response:

- FEMA Region IV:
 - RWC at Monitoring; RRCC is activated to Level II
 - R-IMAT 1 Redeployed (TN), R-IMAT 2 Deployed (KY)
 - FIT LNOs deployed to EOC
- FEMA Region V:
 - RWC at Monitoring; RRCC is Rostered
 - R-IMAT Reconstituting
- FEMA Region VI:
 - Denton MOC is Monitoring; RRCC is at Level II
 - R-IMAT 1 is deployed to AR; R-IMAT-2 is PMC (Personnel)
 - FIT LNO's available to deploy
 - GIS and Remote Sensing are coordinating with HQ and OFA to provide imagery and inundation models
- FEMA Region VII:
 - RWC is Monitoring; RRCC is Rostered
 - R-IMAT FMC

- HQ:
 - NWC is Monitoring; NRCC is at Level III
 - N-IMATS Red, White, Blue, and Gold are FMC
 - ISB Alpha deploying to Fort Knox, KY, arriving at 12:00 p.m. ET
 - ISB Bravo deploying to Lexington, KY, arriving at 12:00 p.m. ET
 - ISB Delta deployed to Lexington, KY
 - Region VIII IMAT deployed to Frankfort, KY (FEMA-3626-EM-KY)
- US&R:
 - Blue Incident Support Team (IST) and East IST Cache deployed to Louisville, KY
 - US&R teams deployed to impacted areas:
 - VA-TF1 – Frankfort, KY; MD-TF1 – Greenville, KY; NE-TF1 – Jonesboro, AR
 - VA-TF2, PA-TF1, and CO-TF1 are demobilizing
 - Mobile Emergency Response Support (MERS) deployed to North Little Rock, AR; Pocahontas, AR; Louisville, KY; Frankfort, KY; and Nashville, TN



The NWC will continue to monitor in coordination with FEMA Regions IV, V, VI, and VII, with continued reporting twice daily in the FEMA National Situation Report (5:00 p.m. / 3:00 a.m. ET) and the FEMA Daily Operations Briefing (8:30 a.m. ET).



Latest River Forecasts

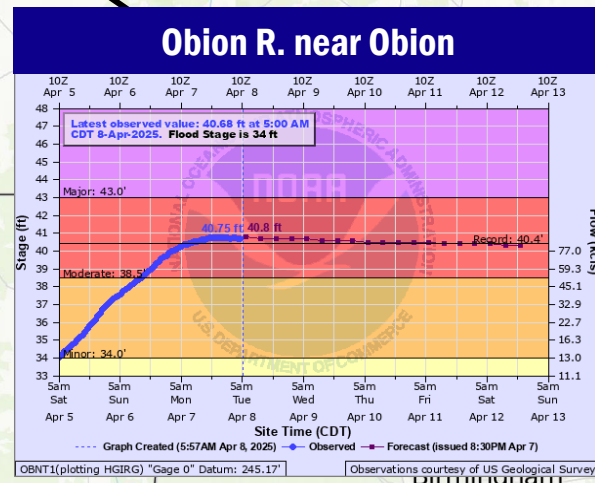
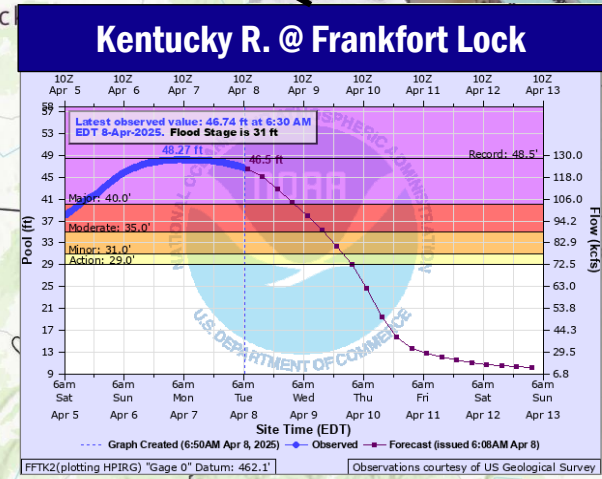
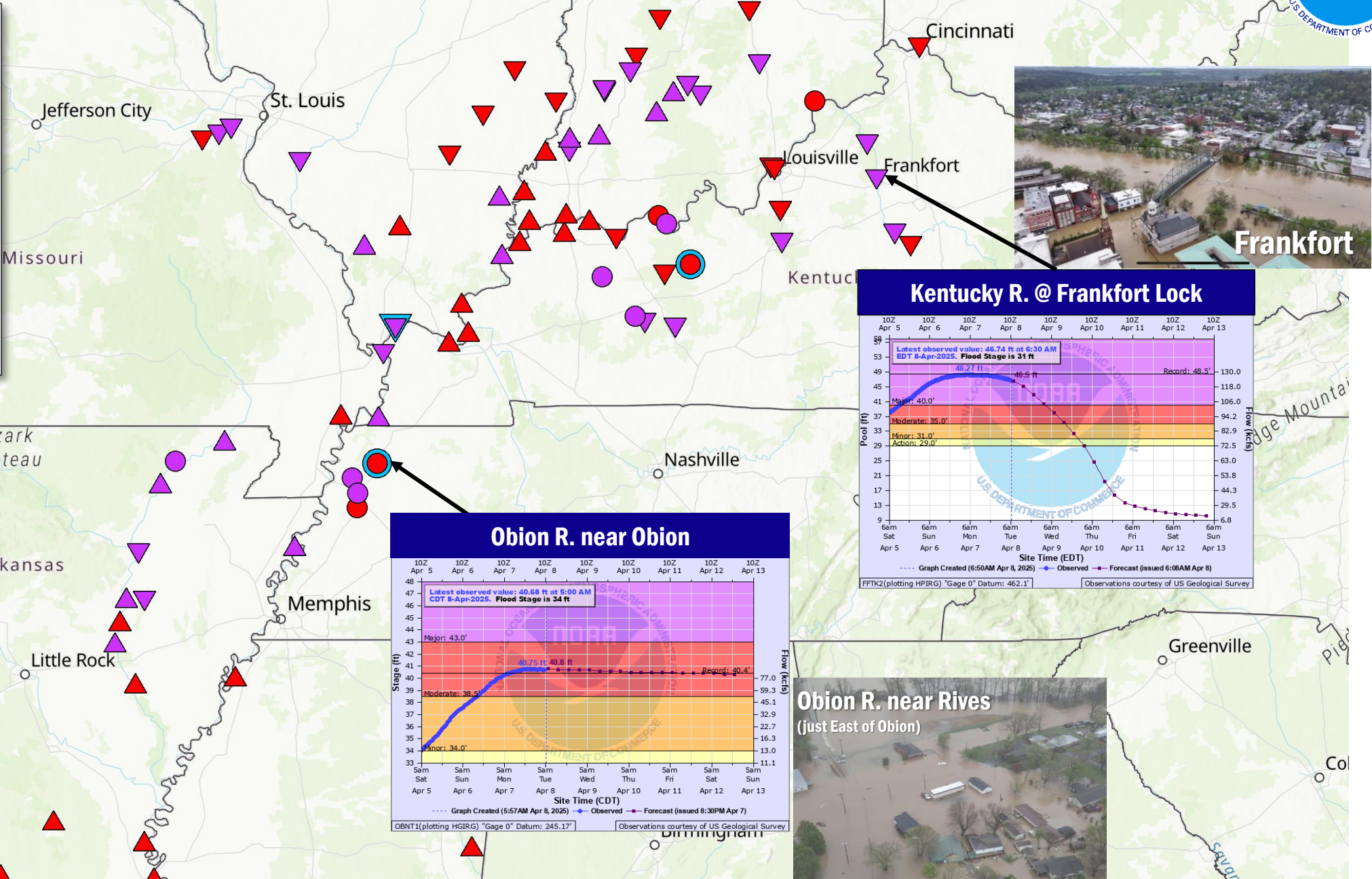
NOAA National Water Center / River Forecast Centers
Updated 7 AM EDT, April 8, 2025



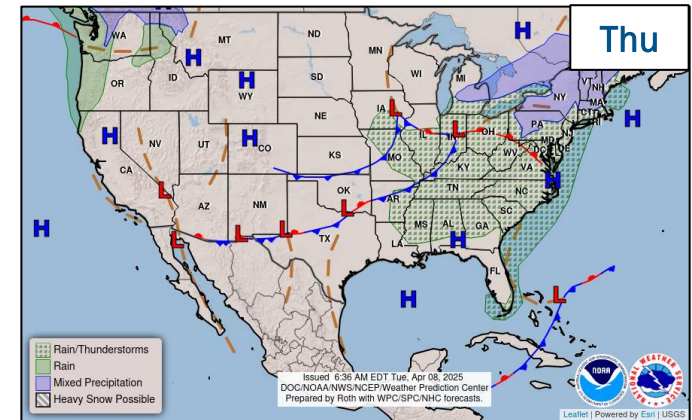
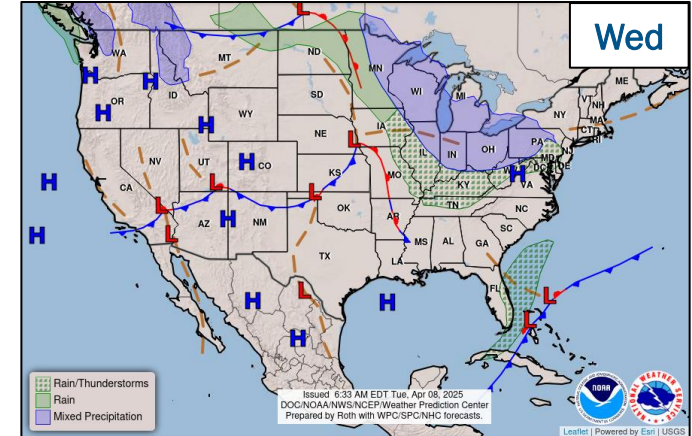
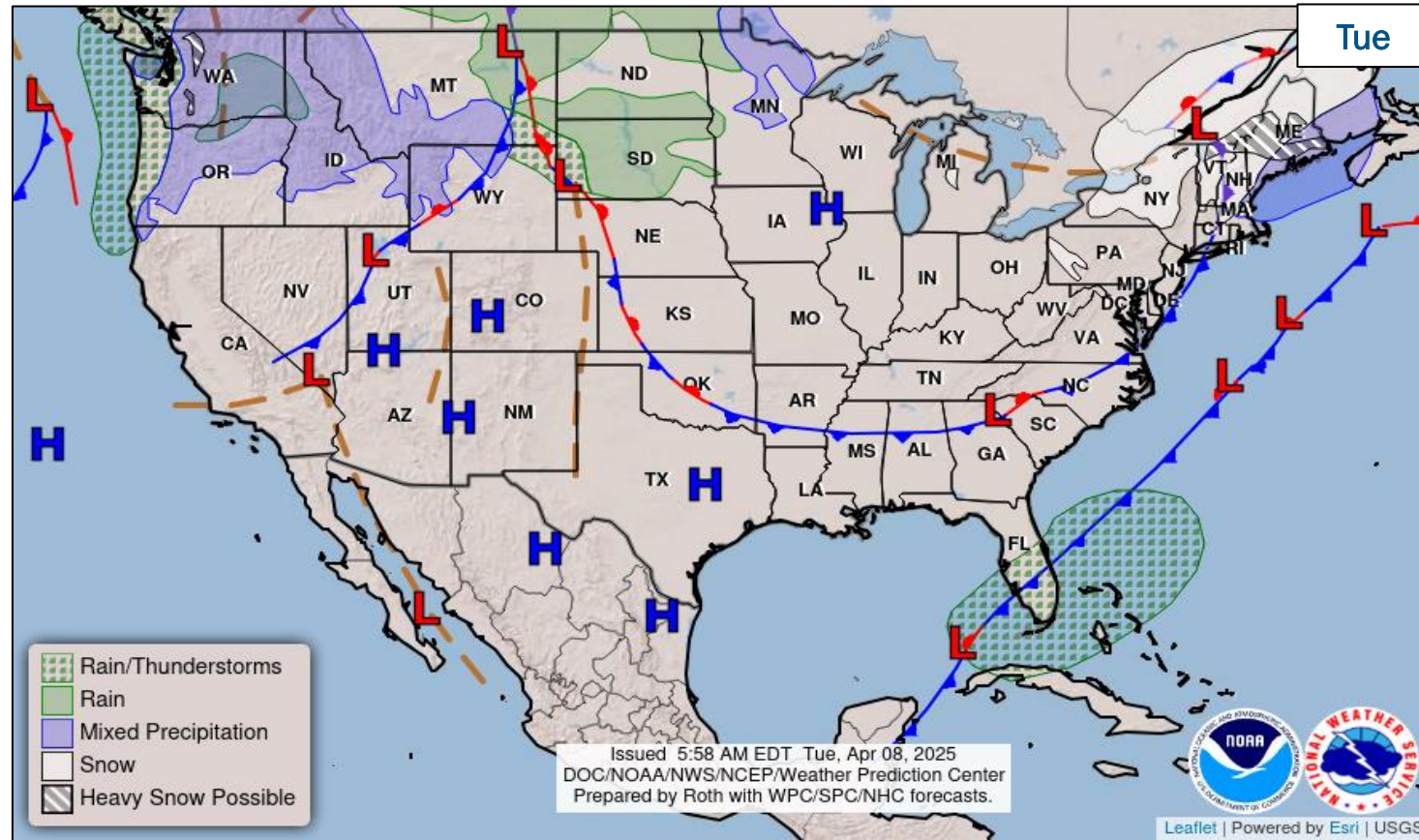
River Forecast

- Record
- Major
- Moderate

- ▲ Increasing
- Constant
- ▼ Decreasing



National Weather Forecast



FEMA

National Watch Center

FEMA Common Operating Picture

31 Joint Field Offices **90 + 11** Major Disasters **10** Direct Housing Missions **20** RSF-Supported Disasters **6** Joint Recovery Offices

Supporting Emergency Declarations

Tuesday
April 8, 2025
8:30 a.m. ET

FEMA HQ	
NWC	NRCC
Monitoring	Level III
FEMA REGIONS	
Watch	RRCC
Monitoring I	Rostered
Monitoring II	Rostered
Monitoring III	Rostered
Monitoring IV	Level II
Monitoring V	Rostered
Monitoring VI	Level II
Monitoring VII	Rostered
Monitoring VIII	Rostered
Monitoring IX	Rostered
Monitoring X	Rostered

N-IMATs	
2-5 Teams Available	
Red	
White	
Blue	
Gold	
HS	DC (Jan 28)

R-IMATs	
4-6 Teams Available	
I	3 / VT (Jan 6)
II	2 / USVI (Oct 30)
III	WV (Feb 28)
IV-1	TN (Apr 4)
IV-2	KY (Feb 16)
V	Reconstituting
VI-1	AR (Apr 4)
VI-2	Personnel
VII	
VIII	KY (Apr 6)
IX-1	CA (Jan 8)
IX-2	CA (Mar 6)
X	1

Notes:

NRCC/RWCs/RRCCs:	State EOCs:
• RIV, RVI RRCC: Flooding	• HI/OK/SC/TX: Wildfires
	• WV: Winter Storms
	• AL/FL/KY/MO/MS/OK/TN/IL/IN/AR/LA: Severe Weather
	• FL/NC: Previous Incidents
	• OR: Flooding
	• ID: Potential Flooding
	• MI: Power Outages

Volunteer Force	
Rostered	Deployed
7,972 (+9)	1
Surge Capacity Force	
Rostered	Deployed
8,799 (-15)	0

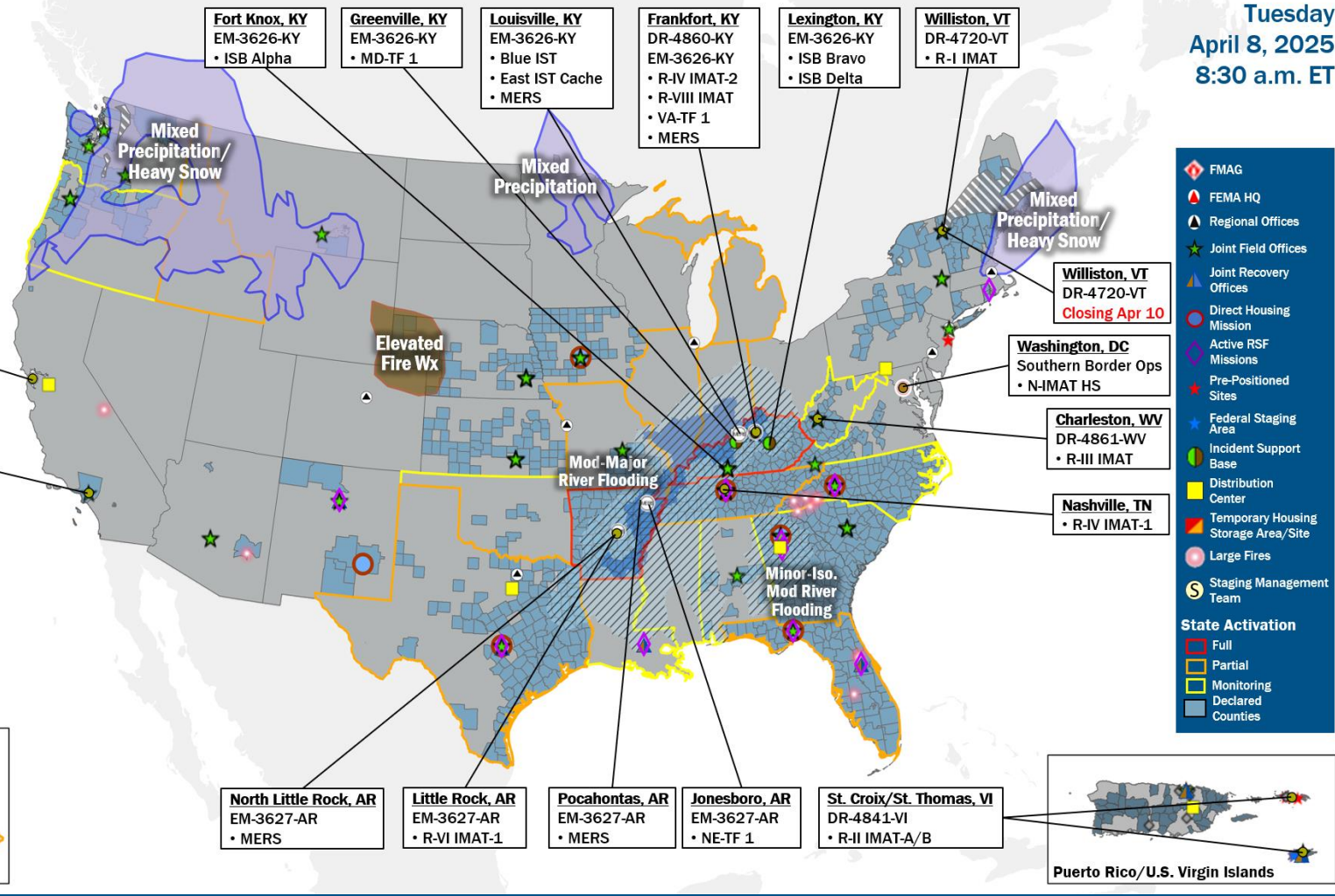
Fully Mission Capable (FMC)
Partially Mission Capable (PMC)
Not Mission Capable (NMC)
Deployed

REGIONAL BREAKDOWN				
	JFO	DR	EM	JRO
I	3	11	0	0
II	4	6	0	2
III	2	7	1	0
IV	8	30	9	1
V	0	0	0	0
VI	2	6	1	3
VII	4	14	0	0
VIII	1	1	0	0
IX	2	5	0	0
X	5	10	0	0



Oakland, CA
DR-4482-CA
• R-IX IMAT-2

Pasadena, CA
DR-4856-CA
• R-IX IMAT-1



Legend:

- FMAG
- FEMA HQ
- Regional Offices
- Joint Field Offices
- Joint Recovery Offices
- Direct Housing Mission
- Active RSF Missions
- Pre-Positioned Sites
- Federal Staging Area
- Incident Support Base
- Distribution Center
- Temporary Housing Storage Area/Site
- Large Fires
- Staging Management Team

State Activation:

- Full
- Partial
- Monitoring
- Declared
- Counties

IM Workforce

14,140 (+1) Assigned
4,807 (+6) Unavailable
7,013 (+10) Deployed

16% / 2,320 (-15) Available

IM Cadre Availability

19 Cadres ≤ 25% Availability

Civil Rights: 18% (32/179); Disaster Field Training Operations: 23% (23/98); Disability Integration: 13% (5/39); Disaster Survivor Assistance: 22% (288/1,303); External Affairs: 7% (26/396); Environmental Planning and Historic Preservation: 13% (114/883); Field Leadership: 10% (14/143); Financial Management: 18% (41/233); Hazard Mitigation: 11% (129/1,224); Human Resources: 14% (24/177); Individual Assistance: 13% (342/2,652); Interagency Recovery Coordination: 23% (79/342); Information Technology: 19% (138/713); Logistics: 13% (217/1,632); Operations: 16% (60/372); Public Assistance: 13% (292/2,308); Planning: 7% (30/461); Safety: 15% (14/94); Security: 10% (13/136)

MERS
≥ 66%

36 Assigned
0 Unavailable
4 Deployed

32 Available

US&R
≥ 66%

28 Assigned
2 (-2) Unavailable
6 Deployed

20 (+2) Available

FCO
2 Type I

49 Assigned
2 Unavailable
43 (+1) (26 (+1) FCOR) Deployed

4 (-1) Available

Joint Preliminary Damage Assessments

Region	State / Location	Incident	IA	Number of Counties		Start - End
			PA	Requested	Complete	
IV	TN	Severe Weather and Flooding Apr 2-7	IA	2	0	4/7 - TBD
			PA	2	0	4/7 - TBD
VI	TX	Flooding Mar 26 and continuing	IA	4	2	TBD - TBD
			PA	0	0	N/A
VII	NE	Blizzard and Severe Weather Mar 18-19	IA	0	0	TBD - TBD
			PA	32 (+1)	0	3/31 - TBD
	KS	Severe Storm, Fires, Straight-line Winds, and Winter Storm Mar 14-19	IA	0	0	N/A
			PA	23	0	TBD - TBD
X	OR	Severe Storms Mar 13	IA	3	0	4/7 - TBD
			PA	4	0	4/7 - TBD



FEMA

Declaration Requests in Process – 10

State / Tribe / Territory – Incident Description	Type	IA	PA	HM	Requested
CA – Park and Borel Fires (Appeal)	DR	X	X	X	Dec 2
WA – Severe Storms, Straight-line Winds, Flooding, Landslides, and Mudslides	DR		X	X	Jan 14
KY – Severe Winter Storms and Snowstorms	DR		X	X	Jan 30
VA – Severe Winter Storms, Tornadoes, and Flooding	DR	X	X	X	Feb 26
TN – Severe Storms and Flooding	DR	X		X	Mar 18
AR – Severe Storms and Tornadoes	DR	X		X	Mar 21
OK – Wildfires and Straight-line Winds	DR	X		X	Mar 21
HI – Flooding	DR		X	X	Mar 27
MS – Severe Storms, Straight-line Winds, Tornadoes, and Flooding	DR	X	X	X	Apr 1
MO – Severe Storms, Straight-line Winds, Tornadoes, and Wildfires	DR	X	X	X	Apr 2



FEMA



FEMA

Helping people before, during, and after disasters.



Scan to subscribe to this briefing.