

The Disaster Center is dedicated to the idea that disaster mitigation is cost effective and individuals pursuing their own interest are the greatest potential force for disaster reduction.

Please consider making a small donation to the Disaster Center



When disaster mitigation is cost effective, we are on the road to bringing disasters to an end.



FEMA

Daily Operations Briefing

Thursday, March 19, 2020

8:30 a.m. ET

National Current Operations & Monitoring



FEMA

Significant Incidents or Threats:

- COVID-19
- Severe thunderstorms possible – Central/Southern Plains to Mississippi and Ohio valleys
- Heavy rain and flash flooding possible – Tennessee and Ohio valleys
- Freezing rain possible – Northern Plains, Upper Mississippi Valley and Northeast
- Heavy snow possible – Central Rockies to Central Plains
- M5.7 Earthquake - UT

Declaration Activity:

- Request: Major Disaster - Mississippi

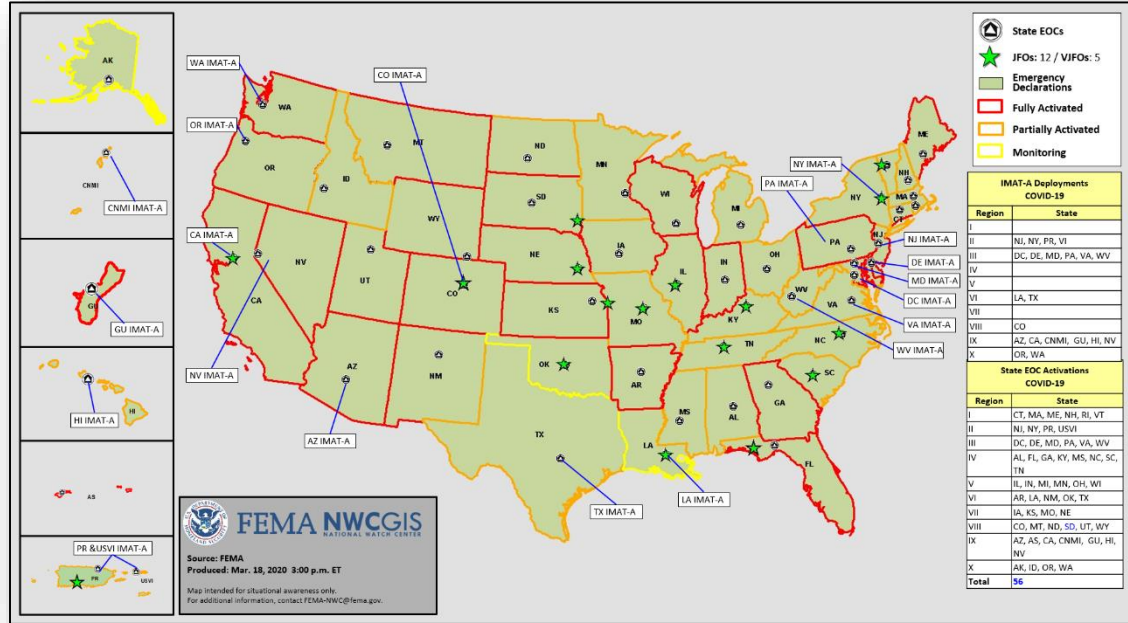
COVID-19 Update



Situation: FEMA continues to support HHS in its role as the lead federal agency for the COVID-19 response, assisting with the planning for future requirements, situational awareness products, and the operational structure required to support a nationwide incident.

FEMA Response:

- POTUS declared National Emergency on Mar 13
- 57 Emergency Declarations were declared in support of the nationwide emergency
- NRCC at [Level I](#) (day shift)
- All RRCCs at Level III (day shift)
- IMAT-As deployed to **21 (+1)** locations (states, territories, DC)
- LNOs deployed to **30 (+6)** locations (states, territories, and DC)



M5.7 Earthquake – Utah

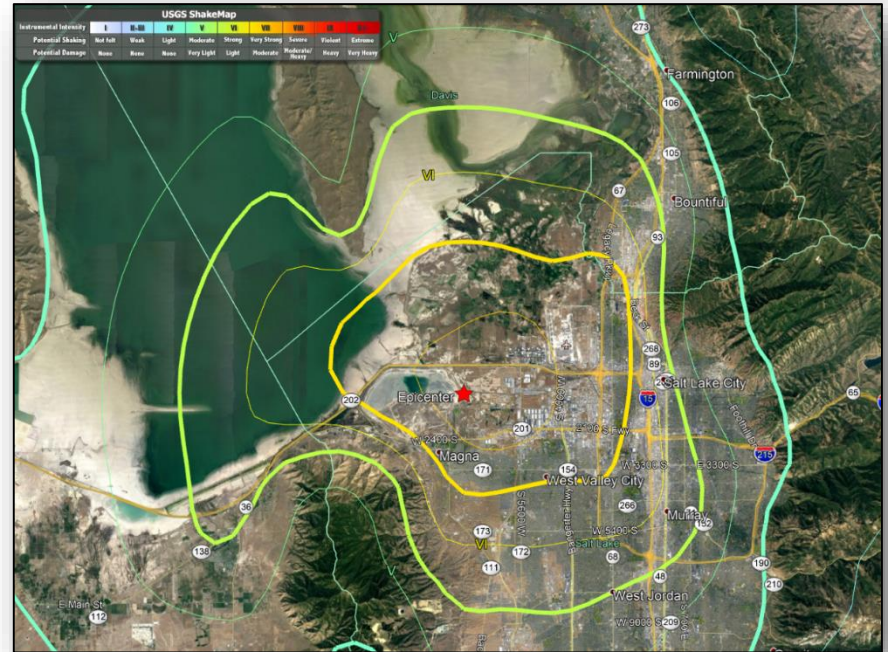


Situation:

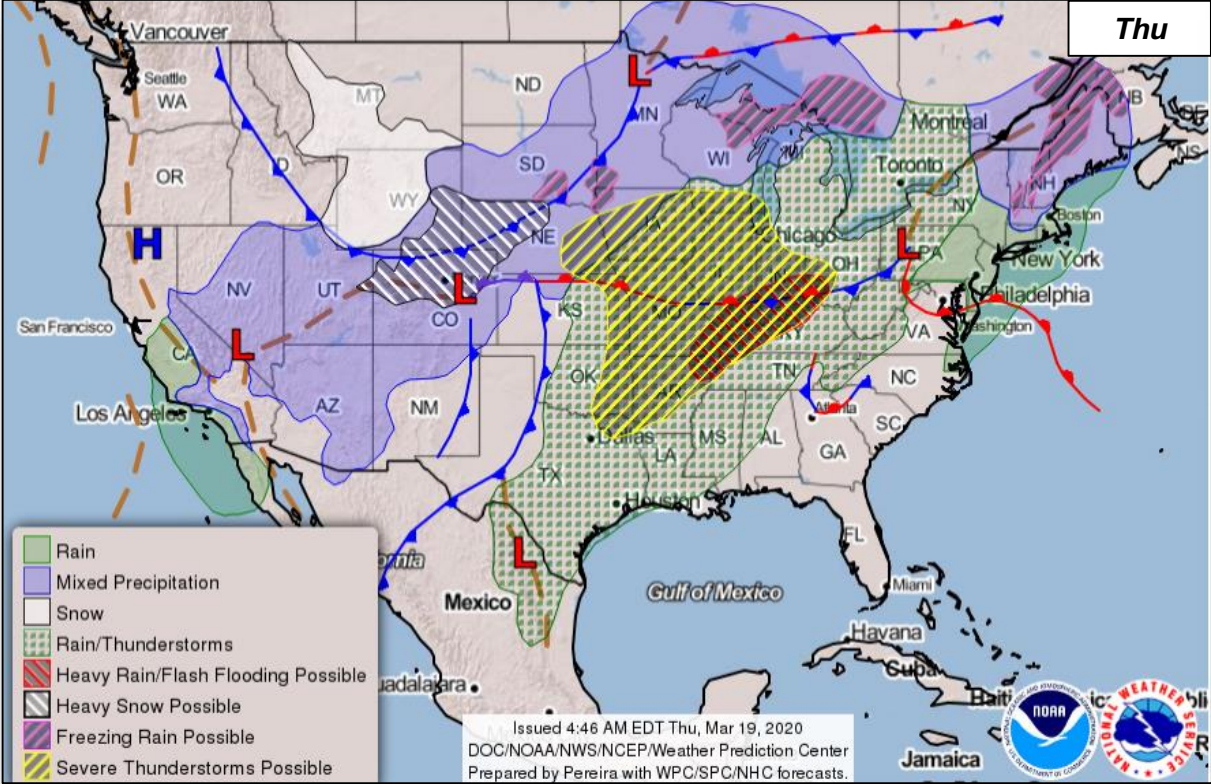
- At 9:09 ET on March 18, 2020, a magnitude 5.7 earthquake occurred 3 miles NNE of Magna, UT (population 26.5k), 10 miles west of Salt Lake City, UT (Population 193k) at a depth of 6 miles
- Yellow PAGER alert was issued for economic losses and a Green PAGER alert was issued for shaking-related fatalities; initial reports indicate minimal damage, no reports of fatalities or injuries
- Level VII on the Modified Mercalli Intensity scale; approximately 410k exposed to very strong or strong shaking
- Numerous aftershocks have occurred, the largest which was a M4.6 which occurred at 3:12 p.m. ET on March 18
- Minimal power outages statewide (peak 75k) *(As of 6:45 pm EDT. Customer outage data is provided by the Department of Energy's EAGLE-I system. Comprehensive National coverage of all electrical service providers is not available.)*
- Salt Lake City International Airport has resumed normal operations

Response:

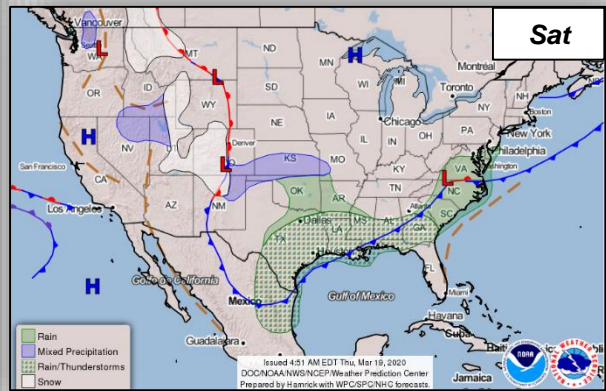
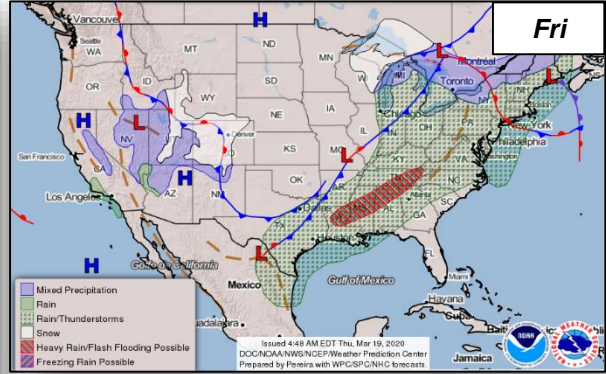
- UT EOC at Full Activation (Earthquake and COVID-19)
- Region VIII RWC and NWC are monitoring



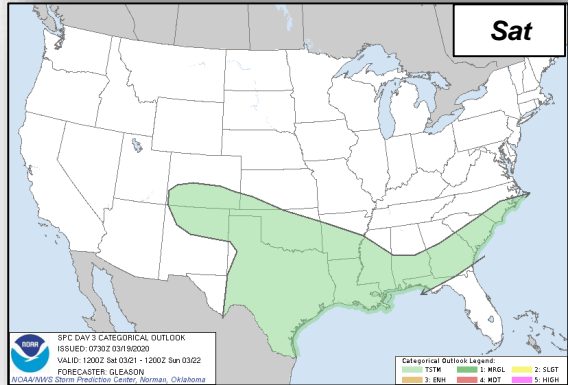
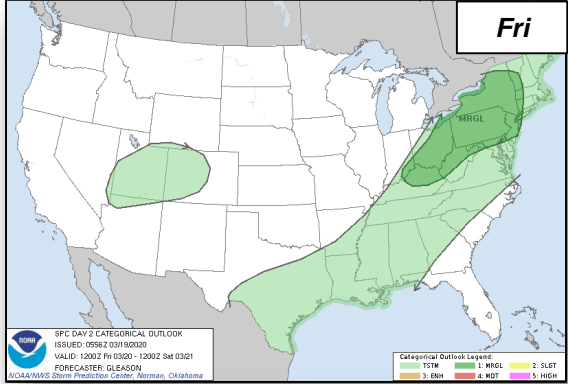
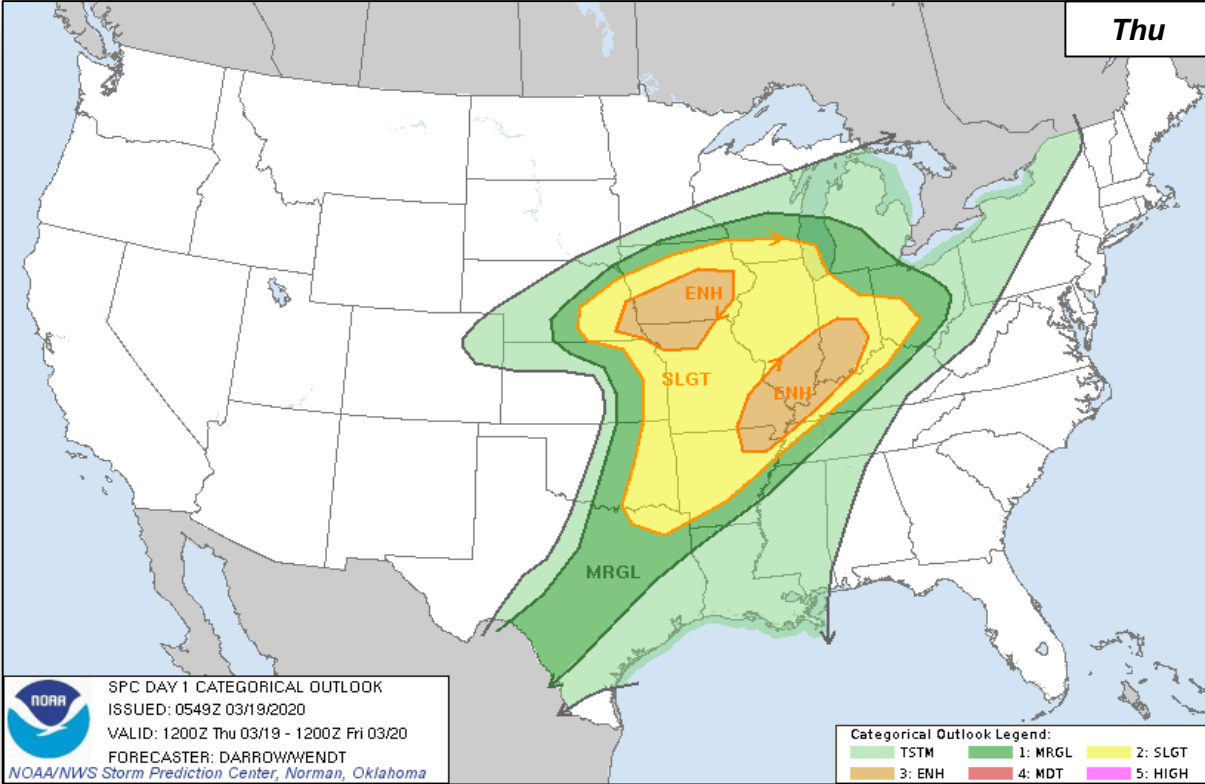
National Weather Forecast



- Rain
- Mixed Precipitation
- Snow
- Rain/Thunderstorms
- Heavy Rain/Flash Flooding Possible
- Heavy Snow Possible
- Freezing Rain Possible
- Severe Thunderstorms Possible



Severe Weather Outlook



Declaration Request



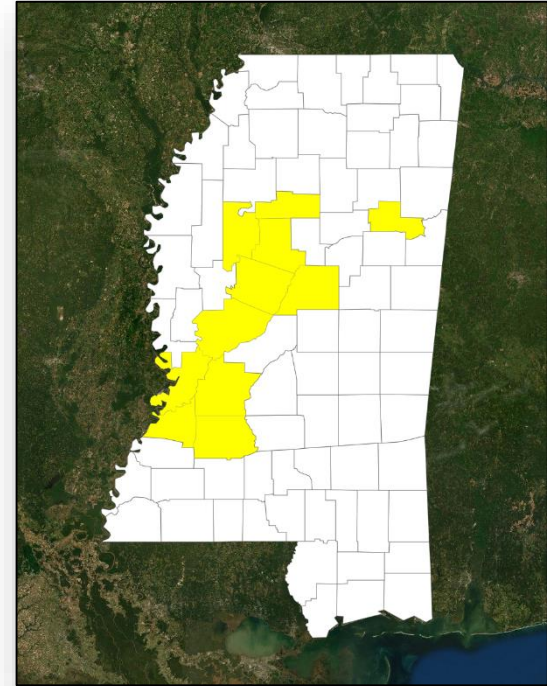
FEMA

Declaration: Major Disaster – Mississippi
Requested: March 17, 2020

Incident: Severe storms, flooding, and mudslides
Incident Period: Feb 10 - 18, 2020

Includes:

- **PA Only:** 11 counties
- **Hazard Mitigation:** Statewide



■ PA

Joint Preliminary Damage Assessments



FEMA

Region	State / Location	Event	IA/PA	Number of Counties		Start – End
				Requested	Completed	
IV	NC	Severe Storms, Flooding, Tornadoes and Straight-line Winds Feb 5-9, 2020	IA	0	0	
			PA	28 (+9)	19	3/9 - TBD

Declaration Requests in Process – 5



FEMA

State / Tribe / Territory – Incident Description	Type	IA	PA	HM	Requested
TX – Severe Storms, Straight-line Winds, and Tornadoes	DR		X	X	Jan 13
AR – Severe Storms, Straight-line Winds, and Tornadoes (Appeal)	DR		X	X	Feb 20
OR – Severe Storms, Flooding, Landslides, and Mudslides	DR	X	X	X	Mar 6
NY – COVID-19	DR	X	X	X	Mar 17
MS - Severe Storms, Flooding, Landslides, and Mudslides	DR		X	X	Mar 17



FEMA Common Operating Picture

FEMA HQ	
NWC	NRCC
Monitoring	Level I

FEMA REGIONS		
WATCH	RRCC	
Monitoring	I	Level III
Monitoring	II	Level III
Monitoring	III	Level III
Monitoring	IV	Level III
Monitoring	V	Level III
Monitoring	VI	Level III
Monitoring	VII	Level III
Monitoring	VIII	Level III
Monitoring	IX	Level III
Monitoring	X	Level III

Notes:

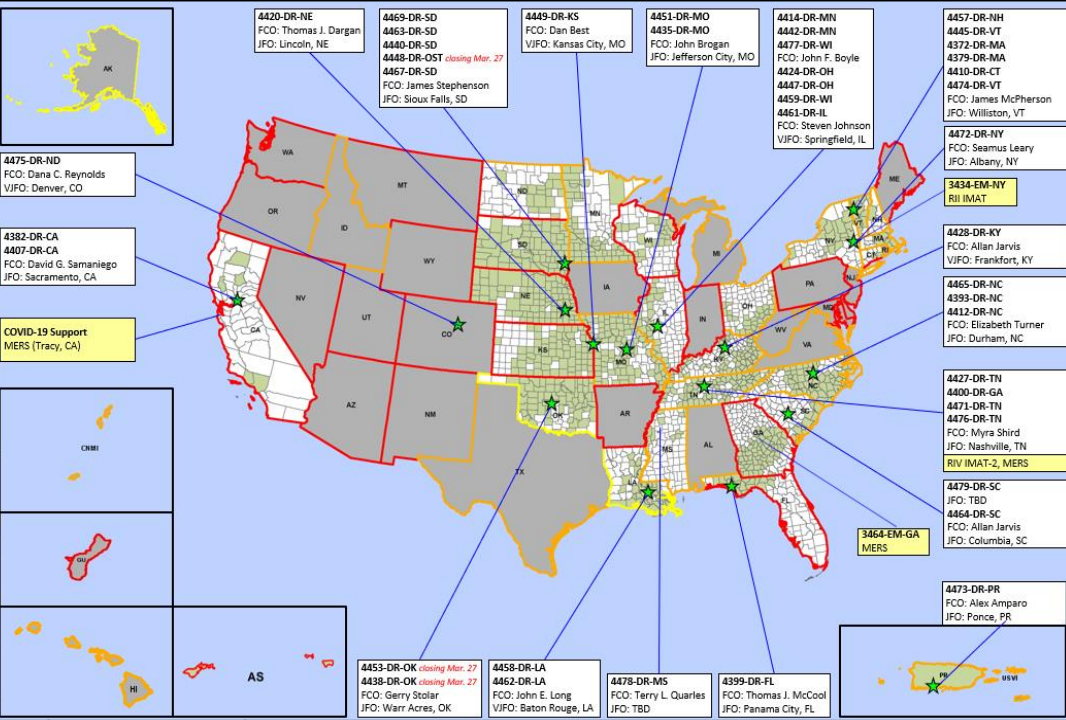
COVID-19	AS: Measles GA: Flooding MS: Flooding PR: Earthquake TN: Tornadoes UT: Earthquake WA: Storms
NRCC: (Days/ESFs)	
All RRCCs (Days)	

- Major Disasters (DR): 43
Emergency Disasters (EM): 57
JFos: 12 / VJFos: 5
Staging Area
Distribution Center (DC)
Declared County
Fully Activated
Partially Activated
Monitoring

As of 8:00 a.m. ET March 19, 2020
Created by FEMA NWC

IMAT-A Deployments COVID-19	
Region	State
I	
II	NJ, NY, PR, VI
III	DC, DE, MD, PA, VA, WV
IV	
V	
VI	LA, TX
VII	
VIII	CO
IX	AZ, CA, CNMI, GU, HI, NV
X	OR, WA

State EOC Activations COVID-19	
Region	State
I	CT, MA, ME, NH, RI, VT
II	NJ, NY, PR, USVI
III	DC, DE, MD, PA, VA, WV
IV	AL, FL, GA, KY, MS, NC, SC, TN
V	IL, IN, MI, MN, OH, WI
VI	AR, LA, NM, OK, TX
VII	IA, KS, MO, NE
VIII	CO, MT, ND, SD, UT, WY
IX	AZ, AS, CA, CNMI, GU, HI, NV
X	AK, ID, OR, WA
Total	56



N-IMATs	
3 Teams	
Red	
Blue	
Gold	

R-IMATs	
≥ 7 Teams	
I	
II	NY
III	
IV-1	
IV-2	TN
V	
VI-1	
VI-2	
VII	
VIII	
IX-1	
IX-2	RRCC
X	RRCC

FMC	PMC
NMC	Deployed

Team:	US&R	MERS	FCOs	FDRCs	IM WORKFORCE
Status	>66%	>66%	= 2	≥3	
Assigned:	28	36	46	11	13,996 ▲
Unavailable:	8 (+5)	0	1 (+1)	0	3,939 ▼
Deployed:	0	3 (-1)	36	8	5,235 ▼
Available:	20 (-5)	33 (+1)	9 (-1)	3	4,822 / 34% ▲

IM CADRE AVAILABILITY SUMMARY	
Cadres with 25% or Less Availability	

EHP 20% (125/617); FL 21% (34/161); PA 21% (640/3,055); SAF 22% (12/55)



FEMA

FEMA's mission is helping people before, during, and after disasters.

Click [here](#) to subscribe to this briefing.