

FEMA National Watch Center

Daily Operations Briefing

Friday, March 18, 2022

8:30 a.m. ET



FEMA

National Current Ops / Monitoring

New Significant Incidents / Ongoing Ops

- COVID-19

Hazard Monitoring

- Severe Thunderstorms – Lower/Middle Mississippi valleys to Ohio and Tennessee valleys

Disaster Declaration Activity

- FMAG approved: Kidd Fire – TX
- FMAG approved: Wheat Field Fire – TX

Event Monitoring

- No significant events



FEMA

Kidd Fire – Texas

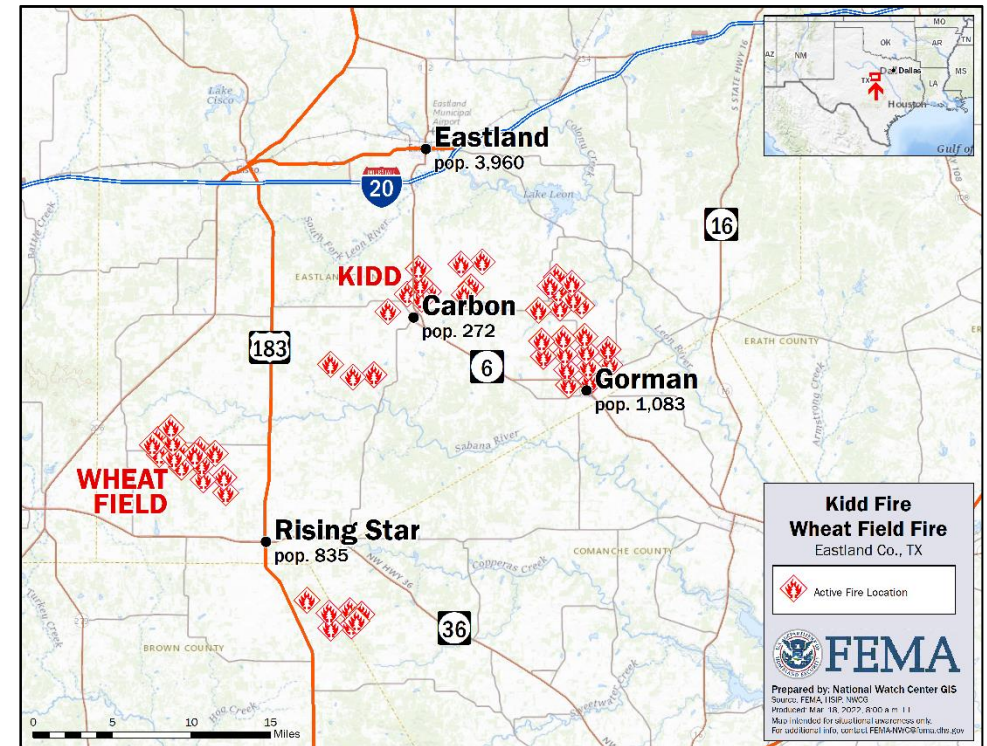
Fire Name (Co., ST)	FMAG #	Acres Burned	Percent Contained	Evacuations	Structures (Homes / Other)			Fatalities / Injuries
					Threatened	Damaged	Destroyed	
Kidd (Eastland, TX)	5427-FM-TX	13,000	0%	M: 0	H: 475	H: 0	H: 0	0 / 0
				V: 272	O: 0	O: 0	O: 0	

Situation:

- The fire began on Mar 17 and is burning on private land in and around the towns of Gorman, Carbon, and Lake Leon (pop. 12k)
- Threatening 475 homes (all primary)
- Also threatening 4,000 buildings, 10 roads and bridges, over 50 infrastructure (gas, oil, railroads), multiple utilities, 5 recreation sites (lake and agriculture), over 50 businesses (gas, oil, and cattle), wildlife, environmental resources, cultural resources, watershed, irrigation, flood control, fishing stream and spawning sites
- Voluntary evacuations for 272 people in Carbon and Gorman
- 4 shelters open in Eastland County with unknown number of occupants

Response:

- TX EOC at Partial Activation (COVID-19); Eastland County declared a State of Disaster
- Region VI, Denton MOC, and the NWC continue to monitor
- FMAG approved on Mar 17



FEMA

National Watch Center

Wheat Field Fire – Texas

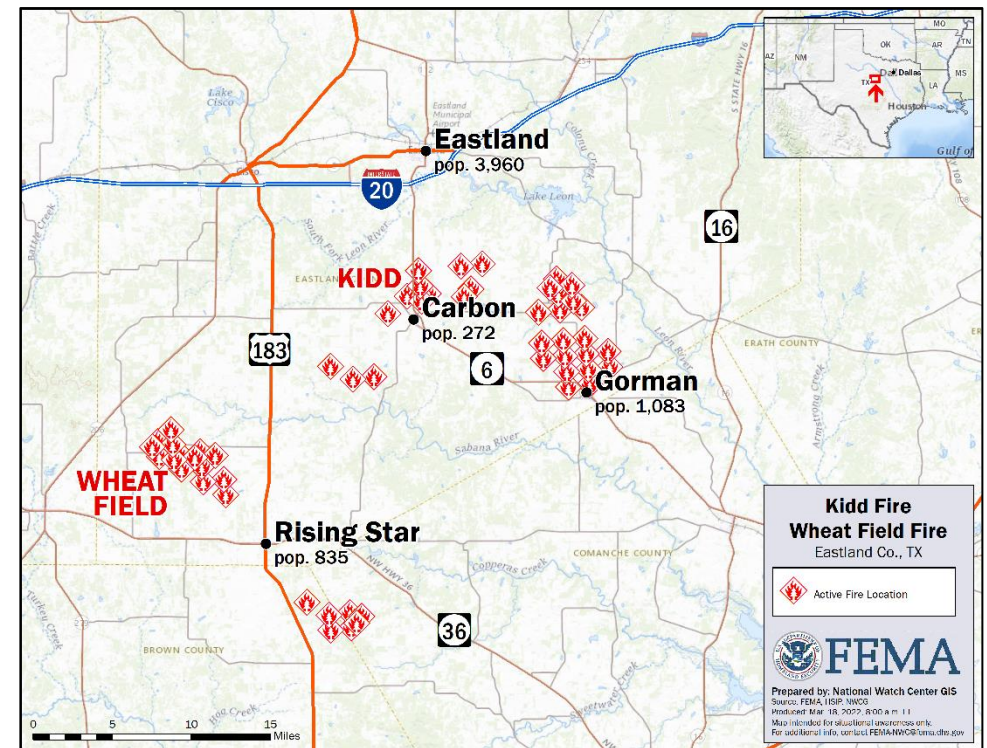
Fire Name (Co., ST)	FMAG #	Acres Burned	Percent Contained	Evacuations	Structures (Homes / Other)			Fatalities / Injuries
					Threatened	Damaged	Destroyed	
Wheat Field (Eastland, TX)	5428-FM-TX	7,000	0%	M: 900	H: 300	H: 0	H: 20	0 / 0
				V: 0	O: 0	O: 0	O: 0	

Situation:

- The fire began on Mar 17 and is burning on private land in and around the town of Rising Star, TX (pop. 835)
- Threatening 300 homes (all primary)
- Also threatening the town's power plant, Highway 36, livestock, over 100 infrastructures, a school, a nursing home, wildlife, environmental resources, and economic injury
- Mandatory evacuations for approximately 900 people
- Shelters open in Cisco with all evacuees sheltering there

Response:

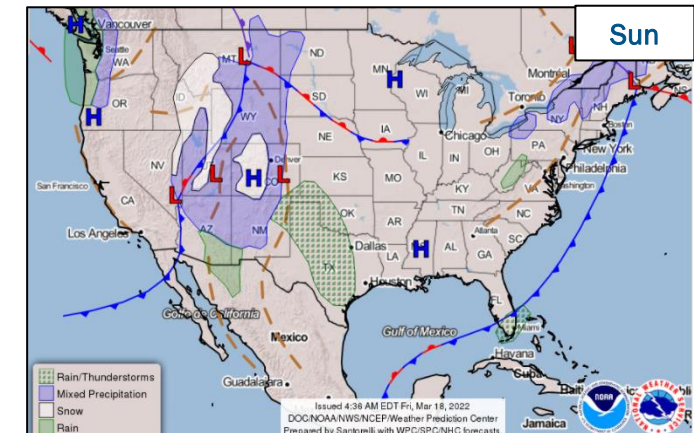
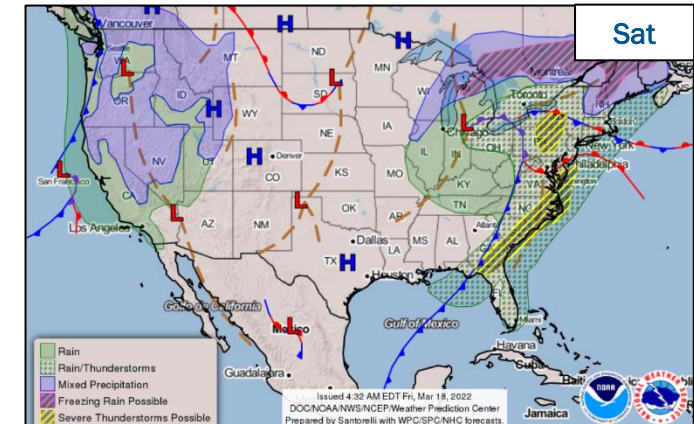
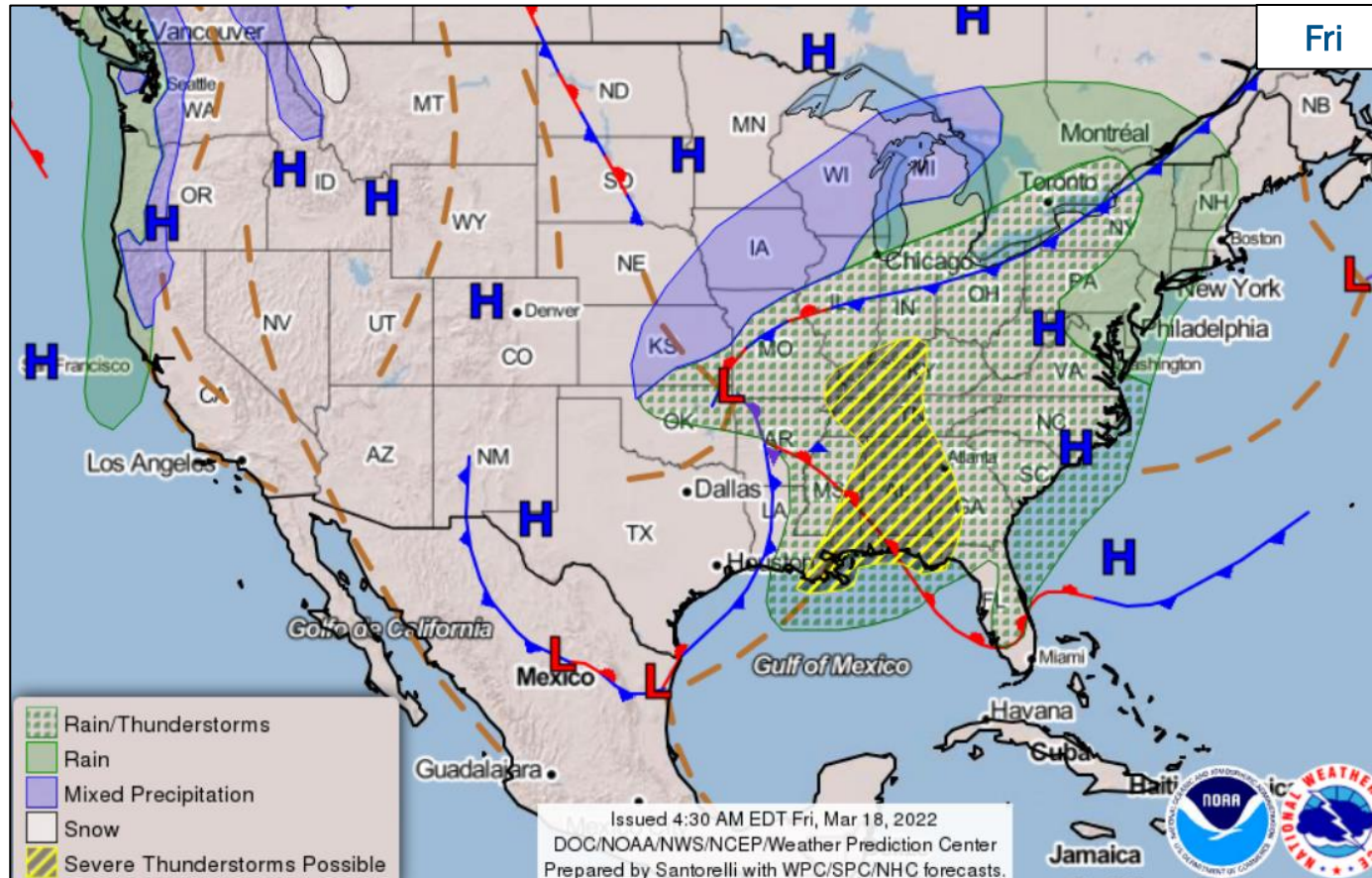
- TX EOC at Partial Activation (COVID-19); Eastland County declared a state of disaster
- Region VI, Denton MOC and the NWC continue to monitor
- FMAG approved on Mar 18



FEMA

National Watch Center

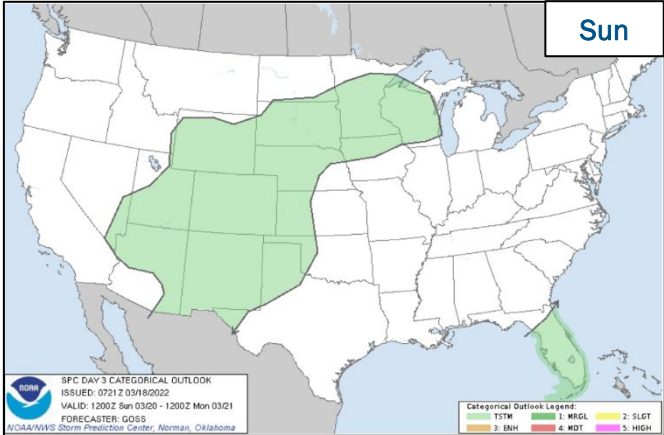
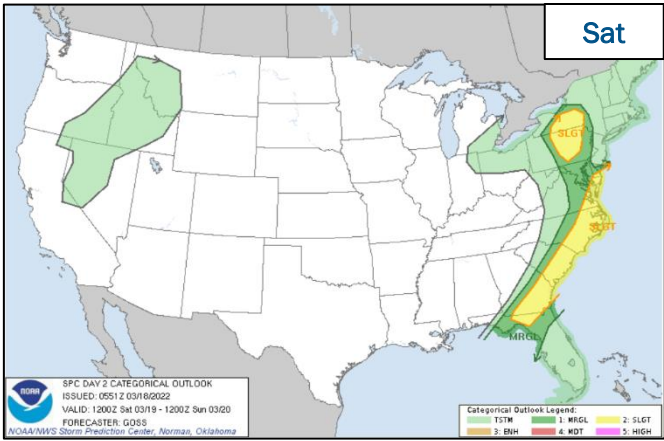
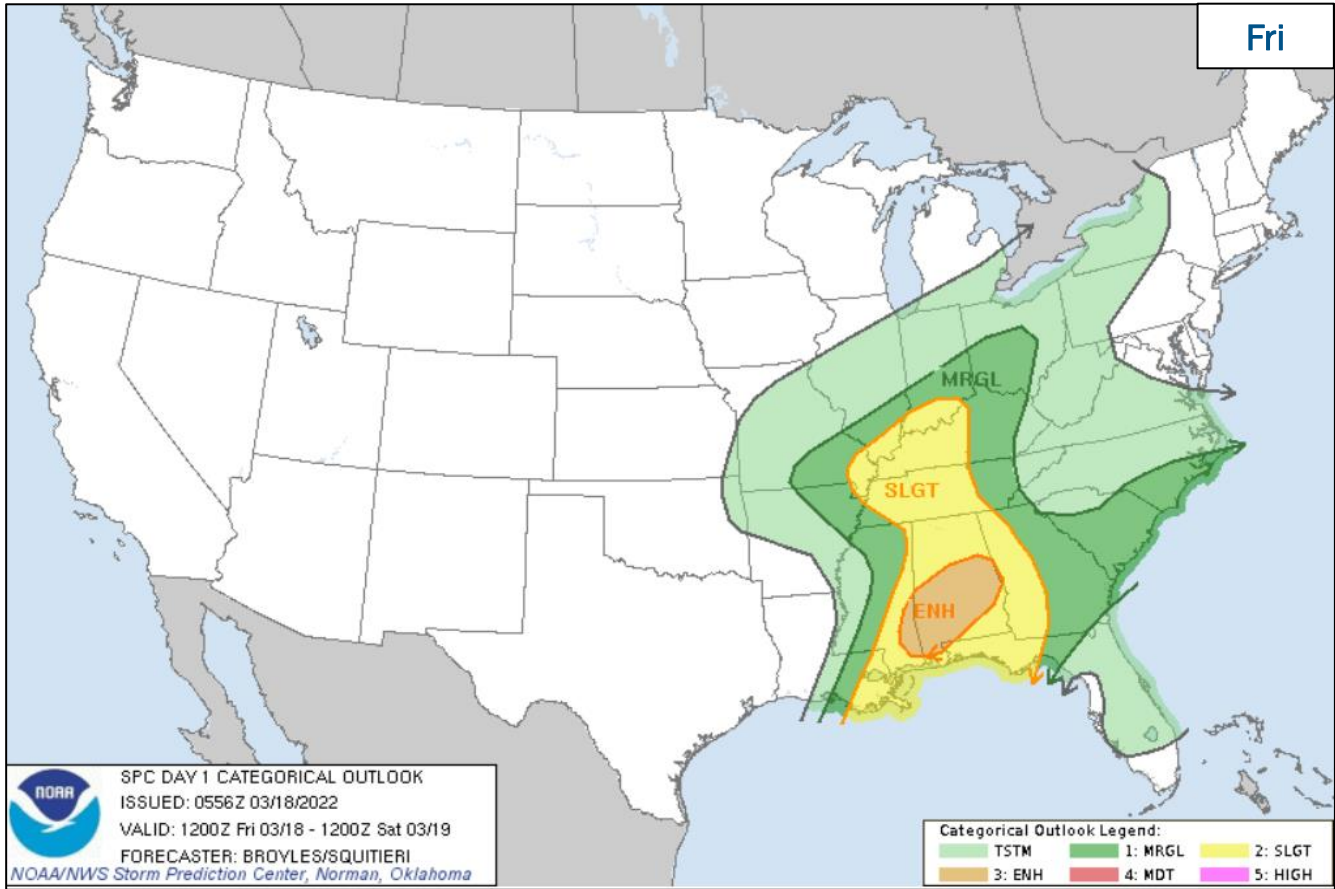
National Weather Forecast



FEMA

National Watch Center

Severe Weather Outlook



FEMA



March 18,
2022

NOAA's 2022 Spring Flood Outlook

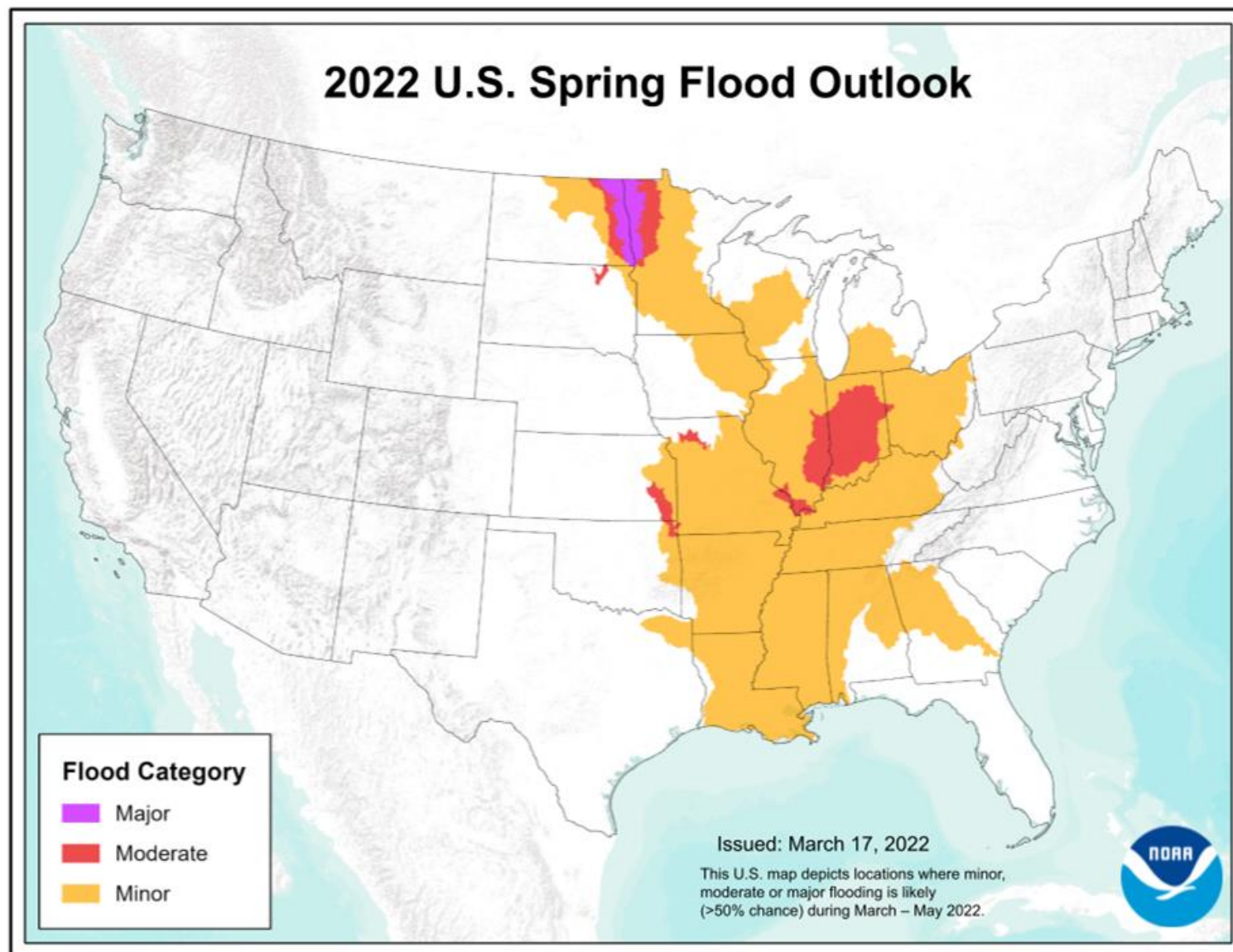
Edward P. Clark

Deputy Director: NWS Office of Water Prediction

Director: National Water Center

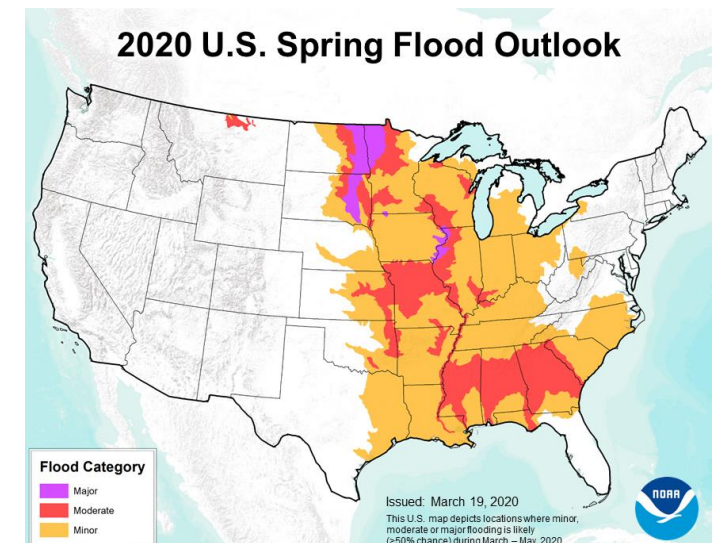
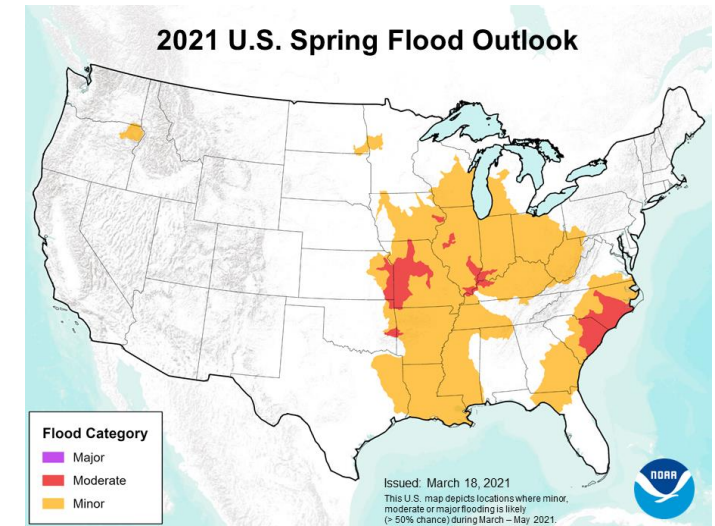
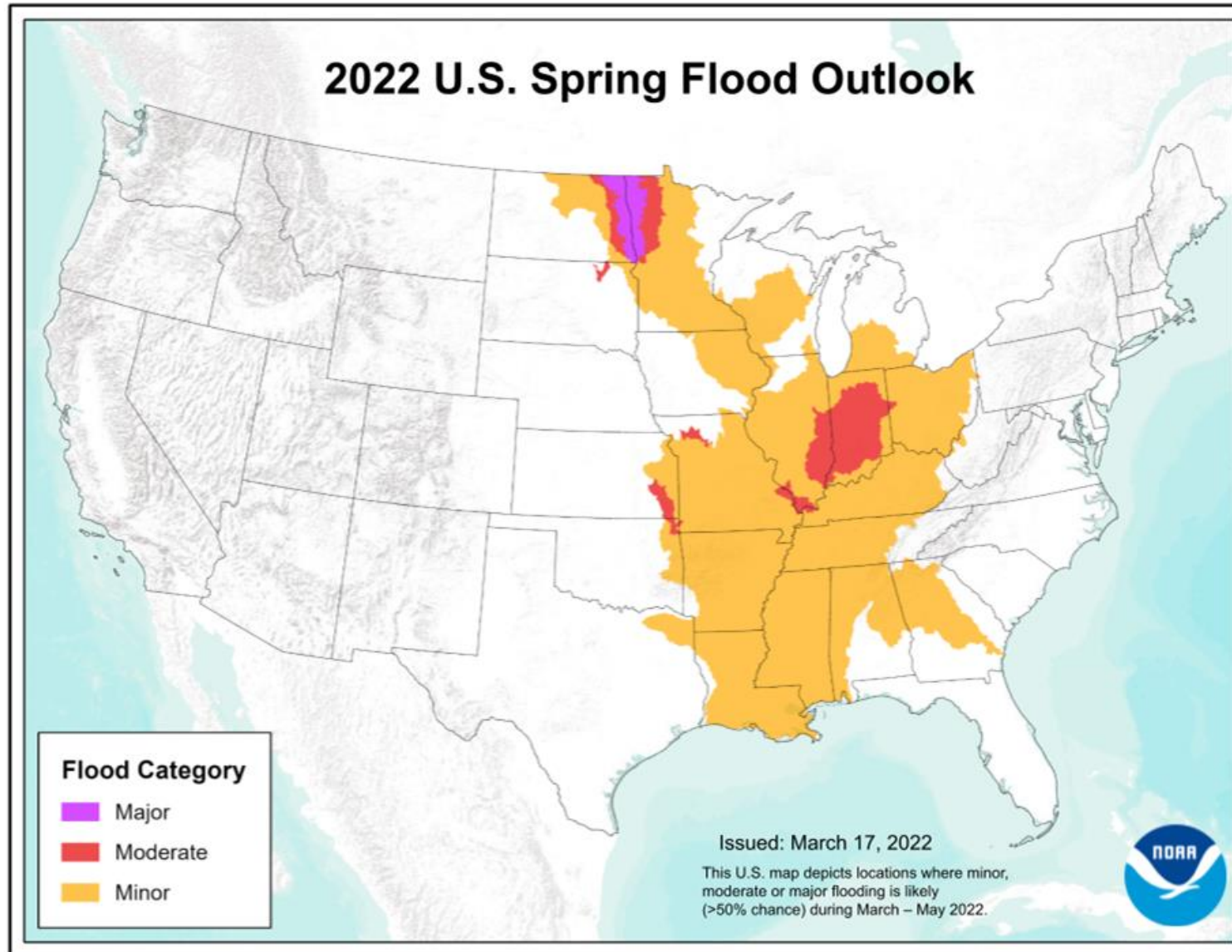


2022 Spring Flood Outlook



- Approximately 80 million people are at risk for flooding in their communities, with 6 million at risk for moderate flooding.
- Approximately 0.5 million people are at risk for major flooding
- Major flooding is possible along the Red River of the North.

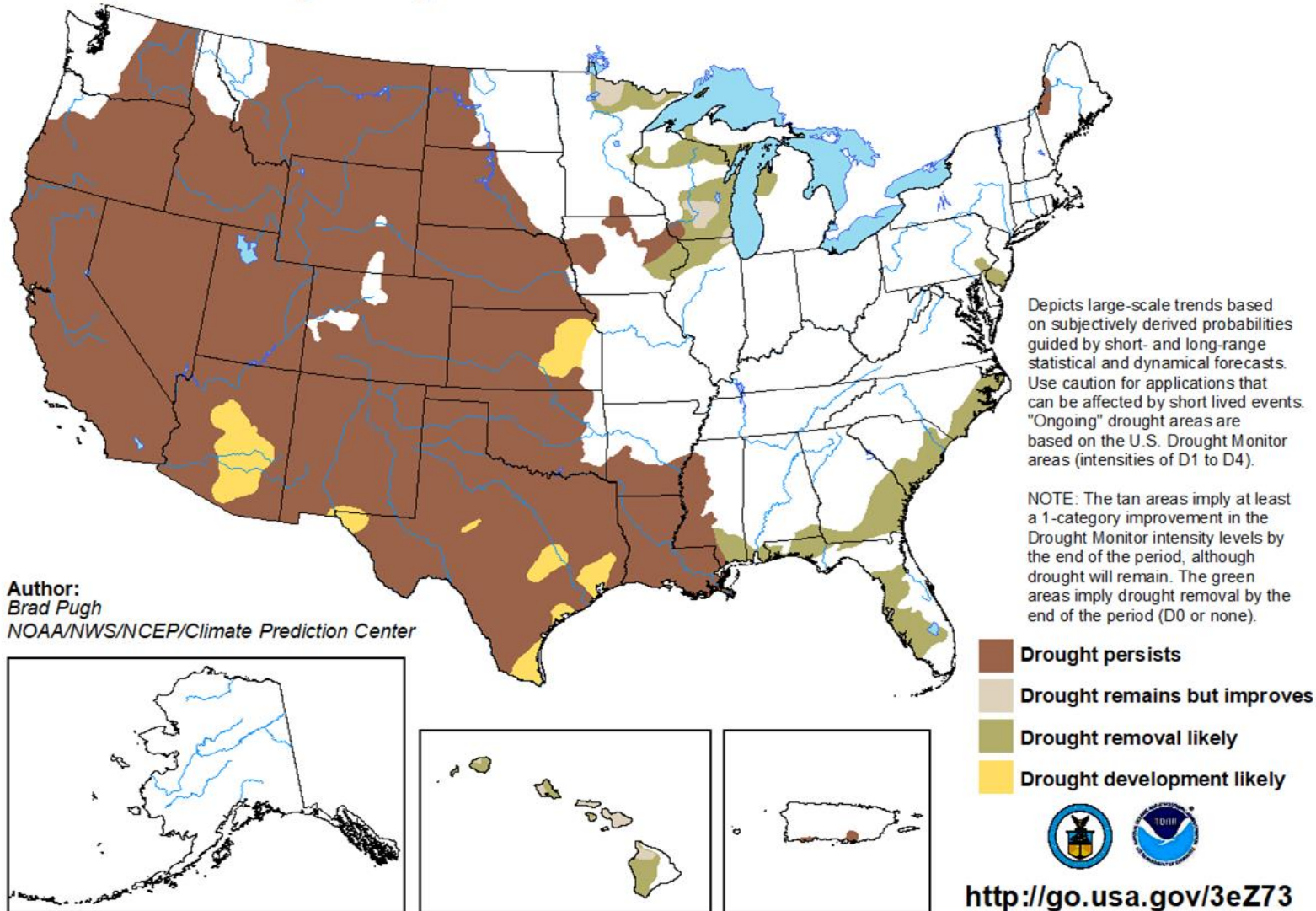
Spring Flood Outlook Comparison (2020 - 2022)



US Drought Outlook

U.S. Seasonal Drought Outlook Drought Tendency During the Valid Period

Valid for March 17 - June 30, 2022
Released March 17

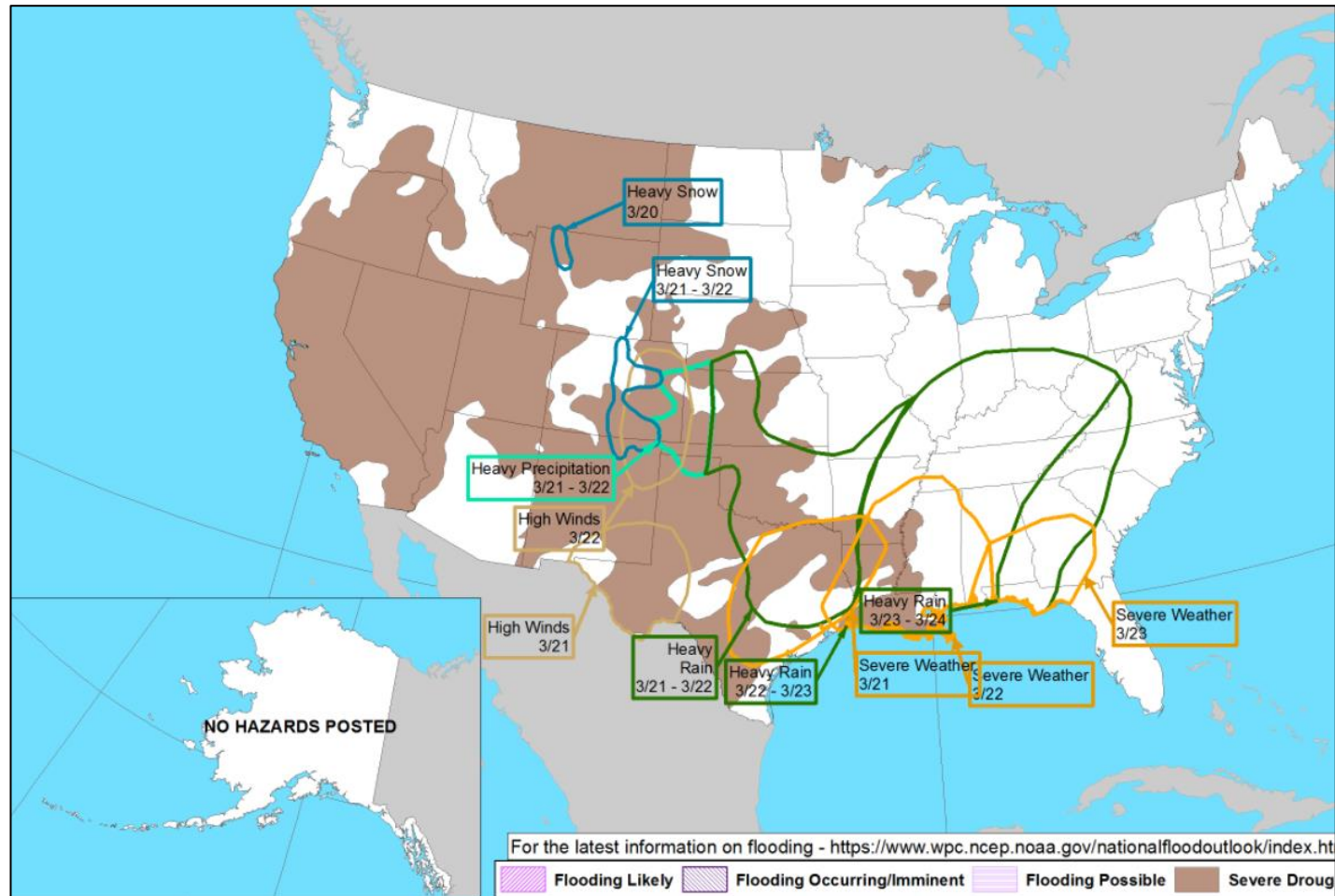


- Drought persistence and expansion in most of the western US through the Central Gulf Coast
- Drought likely to improve over the Great Lakes, Gulf Coast, Mid-Atlantic, and Hawaii



<http://go.usa.gov/3eZ73>

Hazards Outlook – Mar 20-24



FEMA

Joint Preliminary Damage Assessments

Region	State / Location	Incident	IA	Number of Counties		Start – End
			PA	Requested	Complete	
I	MA	Snow Feb 3-4	IA	0	0	N/A
			PA	6	0	2/22 – TBD
	RI	Snow Jan 28-29	IA	0	0	N/A
			PA	5	0	3/3 – TBD
VI	Taos Pueblo (NM)	Wind Dec 15, 2021	IA	1	0	3/10 – TBD
			PA	1	0	3/10 – TBD



FEMA

Declaration Requests in Process – 4

State / Tribe / Territory – Incident Description	Type	IA	PA	HM	Requested
AK – Severe Winter Storm, Snowstorm, and Straight-line Winds	DR		X	X	Feb 23
FL – Severe Storms, Straight-line Winds, and Tornadoes (Appeal)	DR	X			Feb 24
WA – Severe Winter Storms, Straight-line Winds, Flooding, Landslides, and Mudslides	DR		X	X	Mar 4
PR – Severe Storm, Flooding, and Landslides	DR	X		X	Mar 8



FEMA



FEMA

Helping people before, during, and after disasters.



Scan to subscribe to this briefing.