

FEMA National Watch Center

Daily Operations Briefing

Thursday, February 29, 2024

8:30 a.m. ET



FEMA

National Current Ops / Monitoring

New Significant Incidents / Ongoing Ops

- Wildfires – Southern Plains

Hazard Monitoring

- Heavy snow – Pacific Northwest and California to the Northern Rockies
- Critical fire weather – Central Plains

Disaster Declaration Activity

- No new declaration activity

Event Monitoring

- No new significant events



FEMA

Wildfires – Southern Plains

Situation: (Region 6 as of 7:45 a.m. ET) Multiple wildfires have been burning since Feb 27 across the Southern Plains due to dry, windy conditions. Most of the wildfire activity is concentrated in the Texas panhandle and western Oklahoma. Three FMAGs were approved on Feb 27 for the Windy Deuce Fire in Moore Co., TX, the Smokehouse Creek Fire in Hutchison Co., TX, and the Catesby Fire in Ellis Co., OK. As of 8:30 p.m. ET, Feb 28, these three fires have burned a combined total of 1.1m acres of public and private land.

Lifelines

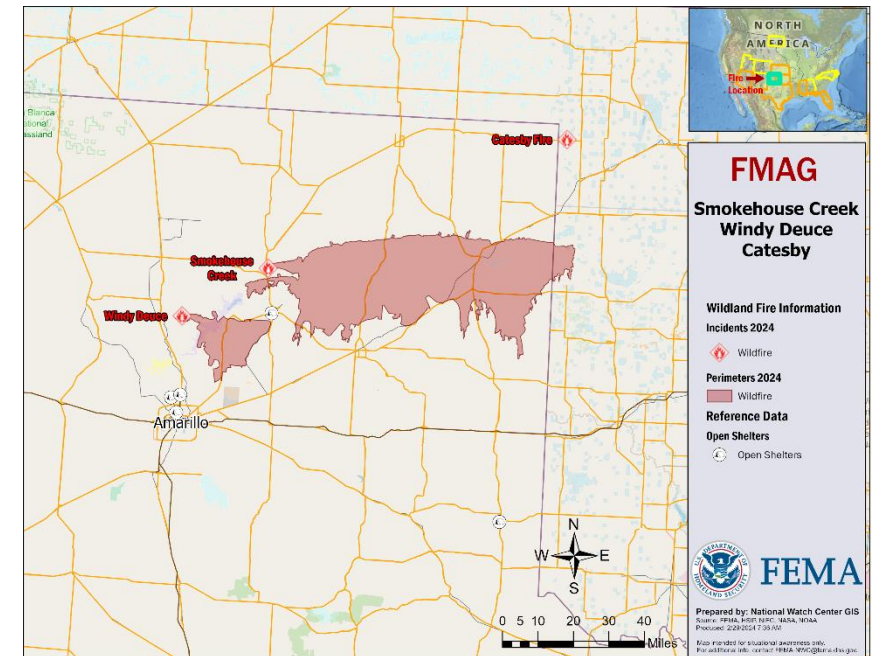
- **Safety and Security:** (ICS-209 as of 9:30 p.m. ET Feb 28)
 - TX: Windy Deuce Fire: Mandatory evacuations: 2,300 (+500)
 - TX: Smokehouse Creek: Mandatory evacuations: 3,000
 - OK: Catesby Fire: Mandatory evacuations: 0
- **Food, Hydration, Shelter:**
 - TX: Windy Deuce Fire: Homes threatened: 250 (+250) / Structures destroyed: 0 (-100)
 - TX: Smokehouse Creek: Homes threatened: 700/Structures destroyed: 1
 - TX: 2 shelters open; 4 occupants (Red Cross Shelter Reports, as of 6:52 a.m. ET)
 - OK: Catesby Fire: Homes threatened: 0
- **Health and Medical:**
 - OK: Catesby Fire: 8 (+6) Injuries
- **Energy:** Minimal power outages across the affected area
 - TX: Windy Deuce Fire: 2 electrical pipelines, 2 WesTex natural gas pipelines, 4 transmission lines threatened
 - OK: Catesby Fire: Public and private utilities, electrical co-op, windmill farm threatened
- **Transportation:**
 - OK: Catesby Fire: Rail system threatened

State / Local Response:

- TX: EOC remains at Partial Activation (Ongoing Threats)
 - TX Gov declared State of Emergency
 - TX deployed 638 total responders across all incidents
 - US&R team activated as state asset to support wildfire response
- OK EOC at Partial Activation (Fire Weather)



FEMA

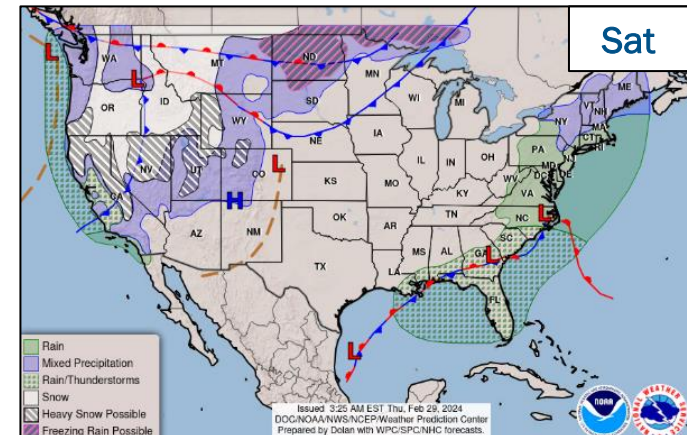
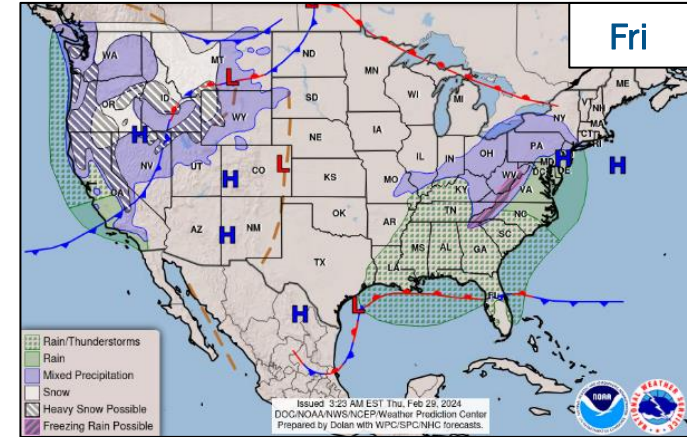
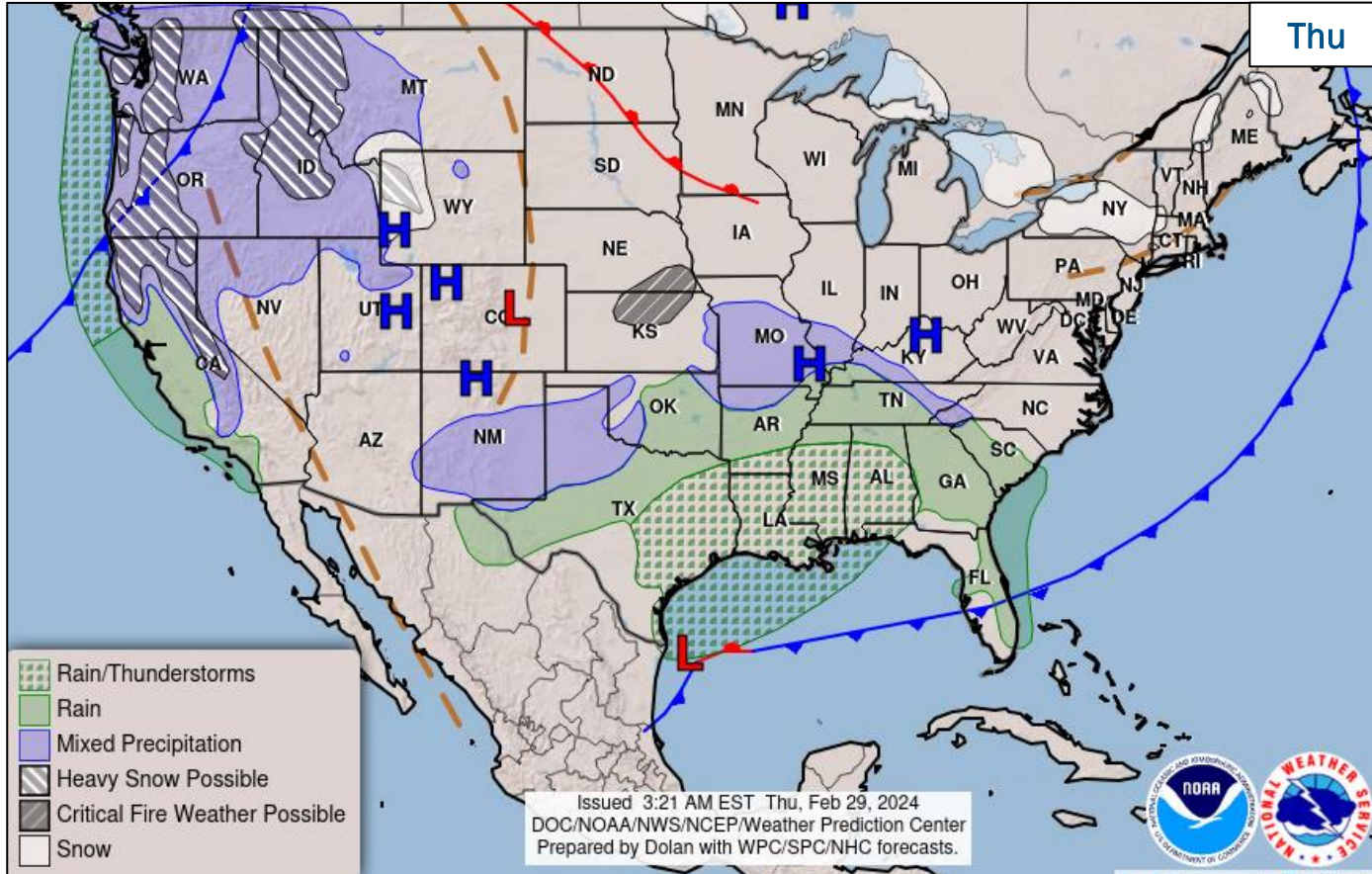


FEMA / Federal Response:

- FMAGs approved Feb 27: 5487-FM-TX (Windy Deuce); 5488-FM-TX (Smokehouse Creek); 5489-FM-OK (Catesby)
- FEMA Region 6: RWC: Monitoring; RRCC: activated to Level III
- FEMA HQ: NWC: Monitoring; NRCC: Activated (Sustained Ops)
- FEMA R6 IMATs 1/2 placed on Alert
- The NWC will continue to monitor in coordination with R6; the next update will be in the NSR at 5:00 p.m. ET

National Watch Center

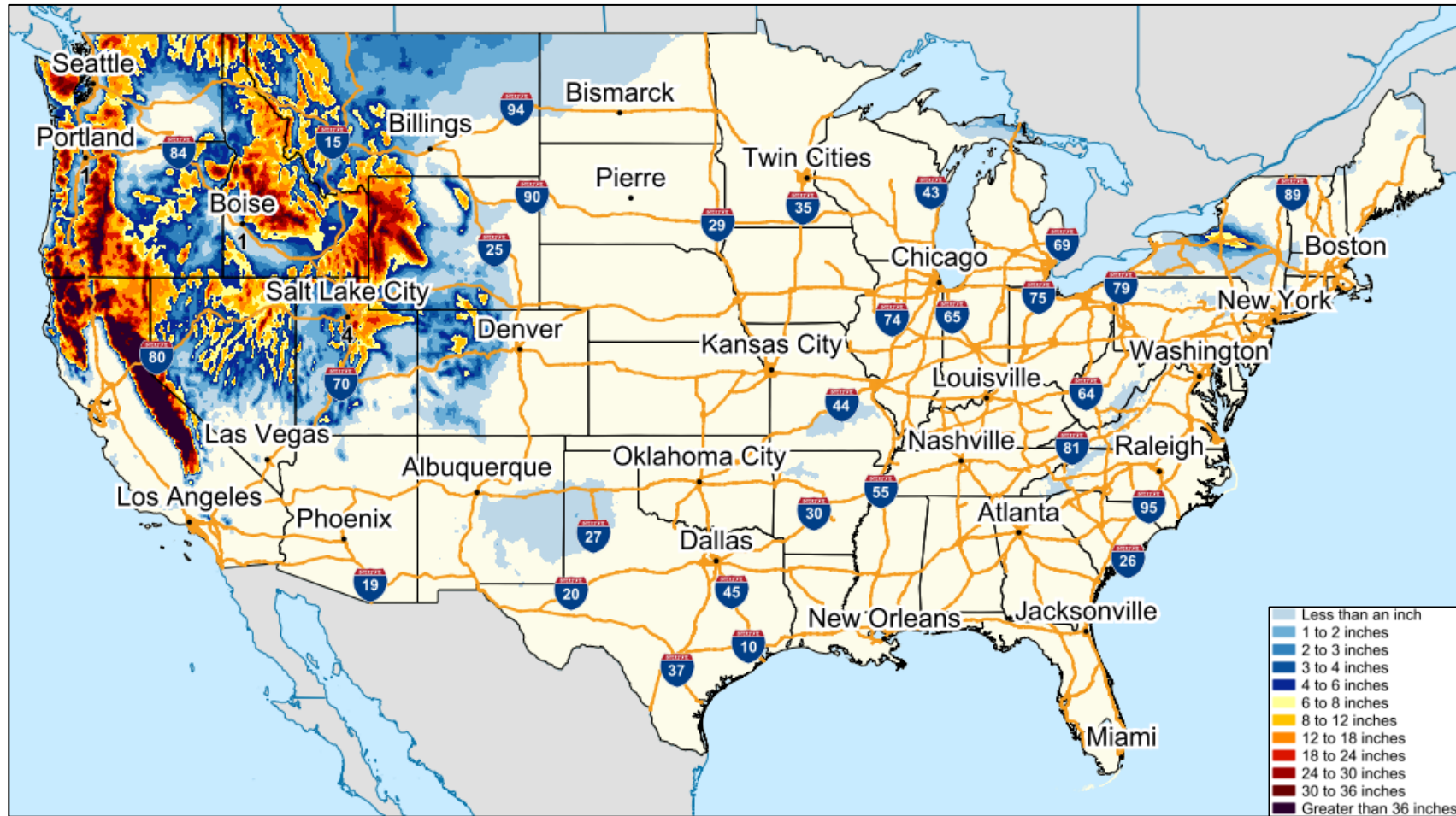
National Weather Forecast



FEMA

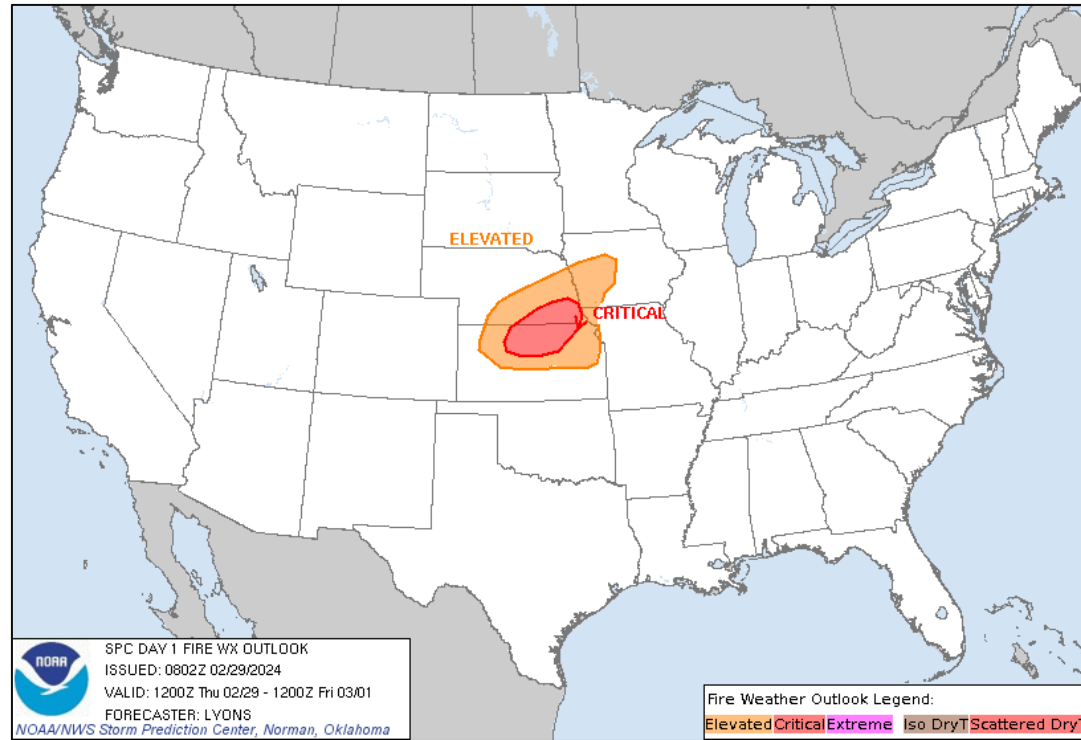
National Watch Center

Snowfall Forecast

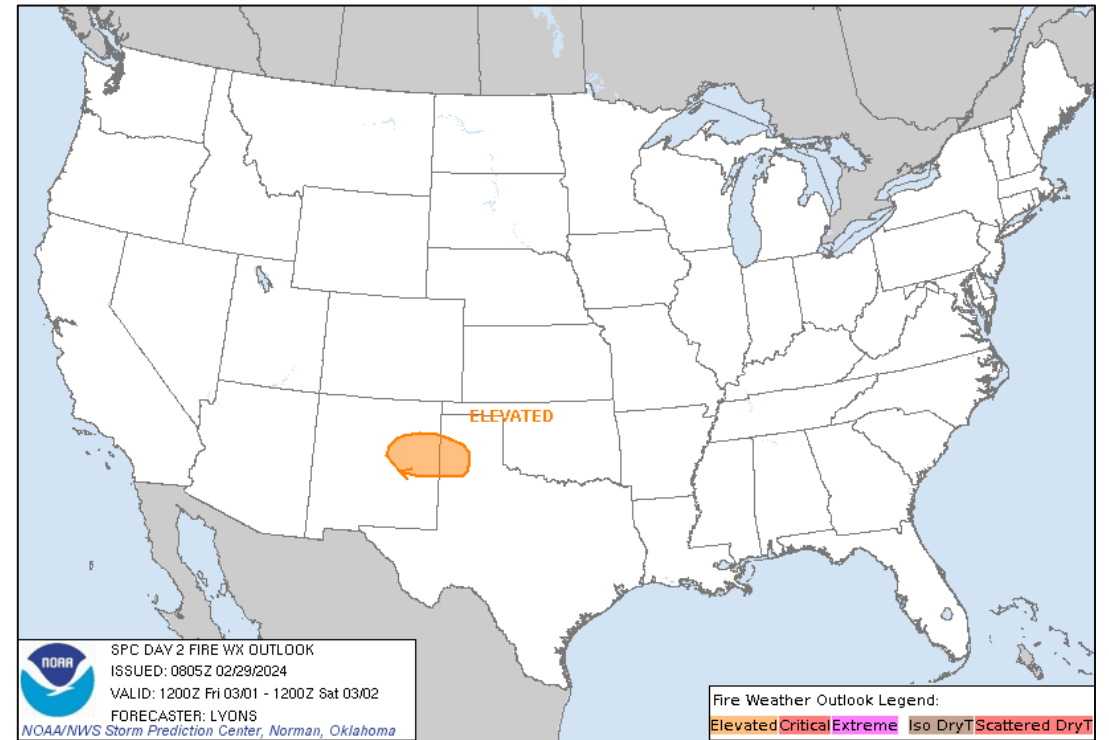


FEMA

Fire Weather Outlook



Today



Tomorrow



FEMA

National Watch Center

FEMA Common Operating Picture

19 + 5 Joint Field Offices Virtual Joint Field Offices Supporting
73 + 4 Major Disasters Emergency Declarations
12 Direct Housing Missions **31** RSF-Supported Disasters

Thursday
 February 29, 2024
 8:30 a.m. ET

FEMA HQ		
NWC	NRCC	
Monitoring	Activated	
FEMA REGIONS		
Watch	RRCC	
Monitoring	I	Rostered
Monitoring	II	Rostered
Monitoring	III	Rostered
Monitoring	IV	Rostered
Monitoring	V	Rostered
Monitoring	VI	Level III
Monitoring	VII	Rostered
Monitoring	VIII	Rostered
Monitoring	IX	Rostered
Monitoring	X	Rostered

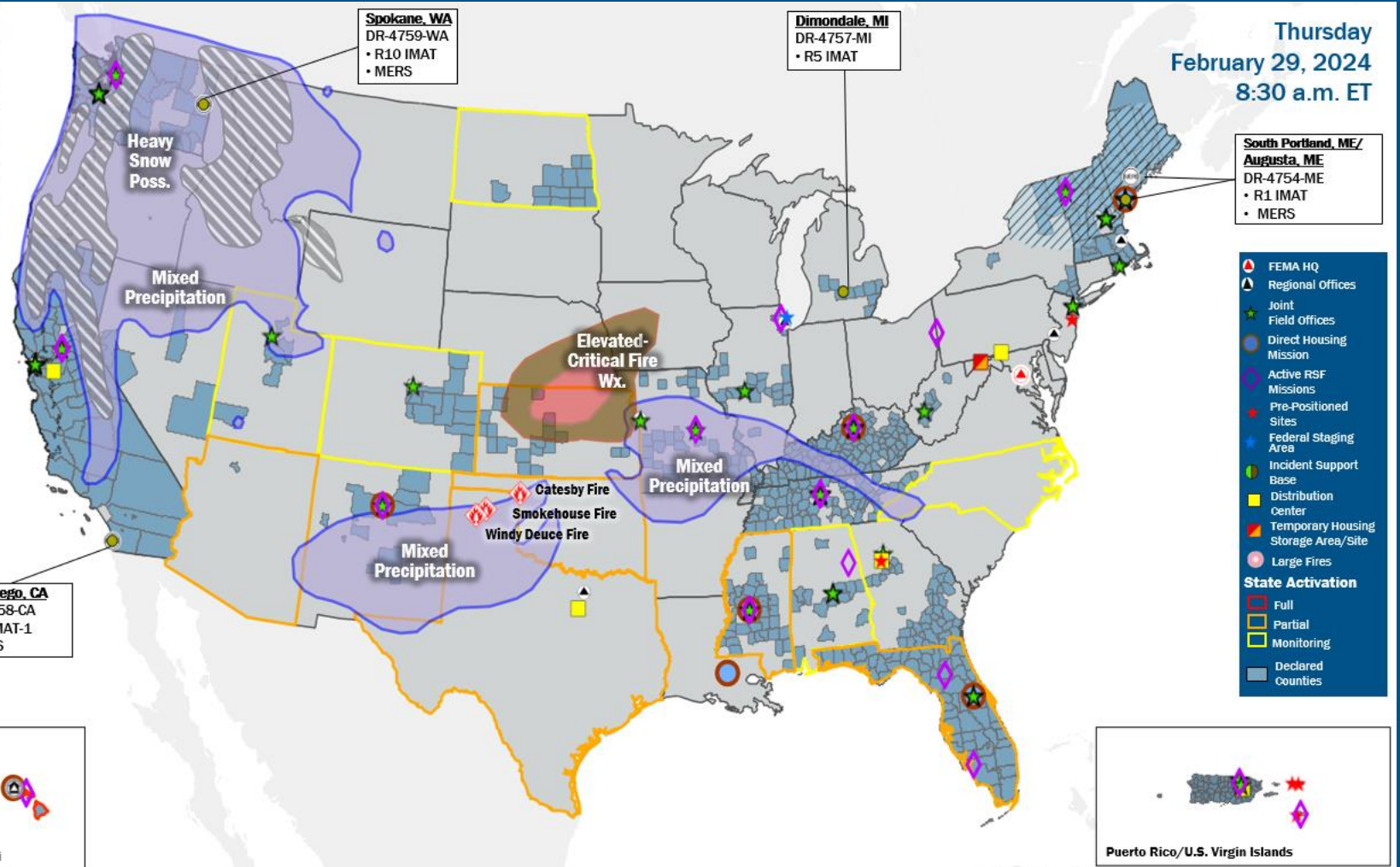
N-IMATs	
2-5 Teams Available	
Red	
White	
Blue	
Gold	
HS	

R-IMATs	
≥ 7 Teams Available	
I	ME
II	1
III	3
IV-1	
IV-2	
V	MI
VI-1	On Alert
VI-2	On Alert
VII	
VIII	2
IX-1	CA
IX-2	Personnel
X	WA

Notes:
RWCs/RRCCs/IMATs:
 NRCC: Sustained Ops
 R6 RRCC: Wildfires 8:30 a.m. - 5:00 p.m. ET
STATE EOCs:
 FL/MS/AL/ND: Severe Weather
 TX: Ongoing Threats
 AZ/CO/UT: SW Border
 HI/TX: Wildfires
 NC: Elections
 OK/KS: Fire Weather

Volunteer Force	
Rostered 7,695 (+4)	Deployed 100 (-2)
Surge Capacity Force	
Rostered 8,388 (+2)	Deployed 60 (+60)

REGIONAL BREAKDOWN			
	JFO/VJFO	DR	EM
I	4/0	12	3
II	2/1	4	0
III	1/0	1	0
IV	5/1	21	1
V	1/0	3	0
VI	1/0	1	0
VII	2/0	2	0
VIII	2/0	2	0
IX	1/1	18	0
X	2/2	9	0



Legend:

- FEMA HQ
- Regional Offices
- Joint Field Offices
- Direct Housing Mission
- Active RSF Missions
- Pre-Positioned Sites
- Federal Staging Area
- Incident Support Base
- Distribution Center
- Temporary Housing Storage Area/Site
- Large Fires

State Activation

- Full
- Partial
- Monitoring
- Declared Counties

IM Workforce

13,798 (+10) Assigned
 4,060 (-165) Unavailable
 5,443 (+53) Deployed

31% / 4,295 (+27) Available

IM Cadre Availability

8 Cadres ≤ 25% Availability

Environmental Planning and Historic Preservation: 21% (170/801);
 Field Leadership: 21% (31/148); Hazard Mitigation: 24% (297/1,234);
 Operations: 19% (63/333); Public Assistance: 18% (404/2,198); Planning: 10% (46/459);
 Safety: 19% (16/83); Security: 24% (32/136)

MERS

> 66%

36 Assigned
 0 Unavailable
 1 Deployed

35 Available

US&R

> 66%

28 Assigned
 2 (+1) Unavailable
 0 Deployed

26 (-1) Available

FCO

≤ 1 Type I

50 Assigned
 7 Unavailable
 38 (23 FCOR) Deployed

5 Available

Joint Preliminary Damage Assessments

Region	State / Location	Incident	IA	Number of Counties		Start - End
			PA	Requested	Complete	
I	RI	Flooding Jan 8-17	IA	3	3	2/15 - 2/22
			PA	4	0	TBD - TBD
	VT	Winter Storm / High Winds Jan 9-10	IA	0	0	N/A
			PA	5	5 (+5)	2/12 - 2/27
	MA	Flooding Jan 10-13	IA	0	0	N/A
			PA	4	0	2/15 - TBD
	NH	Flooding Jan 9 and continuing	IA	0	0	N/A
			PA	10	0	2/20 - TBD
VI	CNO*	Severe Winter Weather Jan 12-16	IA	0	0	N/A
			PA	1	0	TBD - TBD
IX	CA	Atmospheric River Jan 31-Feb 9	IA	6	6	2/13 - 2/23
			PA	15	0	2/13 - TBD
X	OR	Winter Storms Jan 12-20	IA	0	0	N/A
			PA	11	0	2/12 - TBD
	CTSI**	Winter Storms Jan 12-20	IA	0	0	N/A
			PA	1	0	2/12 - TBD
	WA	Winter Storms Jan 5-22	IA	0	0	N/A
PA			17	0	2/26 - TBD	

*Choctaw Nation of Oklahoma

**Confederate Tribes of Stiletz Indians



FEMA

National Watch Center

Declaration Requests in Process – 10

State / Tribe / Territory – Incident Description	Type	IA	PA	HM	Requested
OH – Train Derailment	DR	X	X	X	Jul 3
AK – Severe Storms, Flooding, and Landslides	DR	X	X	X	Jan 8
PA – Severe Storms and Flooding (Appeal)	DR		X		Jan 20
AK – Permafrost Degradation	DR		X	X	Jan 24
SC – Severe Storm and Tornadoes	DR	X			Feb 2
FL – Severe Storm, Straight-Line Winds, and Tornadoes	DR	X	X	X	Feb 5
IA – Severe Winter Storms and Snowstorm	DR		X	X	Feb 13
VT – Severe Storm and Flooding	DR		X	X	Feb 14
WCA* – Severe Storm, Landslides, and Mudslides	DR	X	X	X	Feb 18
ME – Severe Storms and Flooding	DR	X	X	X	Feb 26

*Wrangell Cooperative Association



FEMA



FEMA

Helping people before, during, and after disasters.



Scan to subscribe to this briefing.